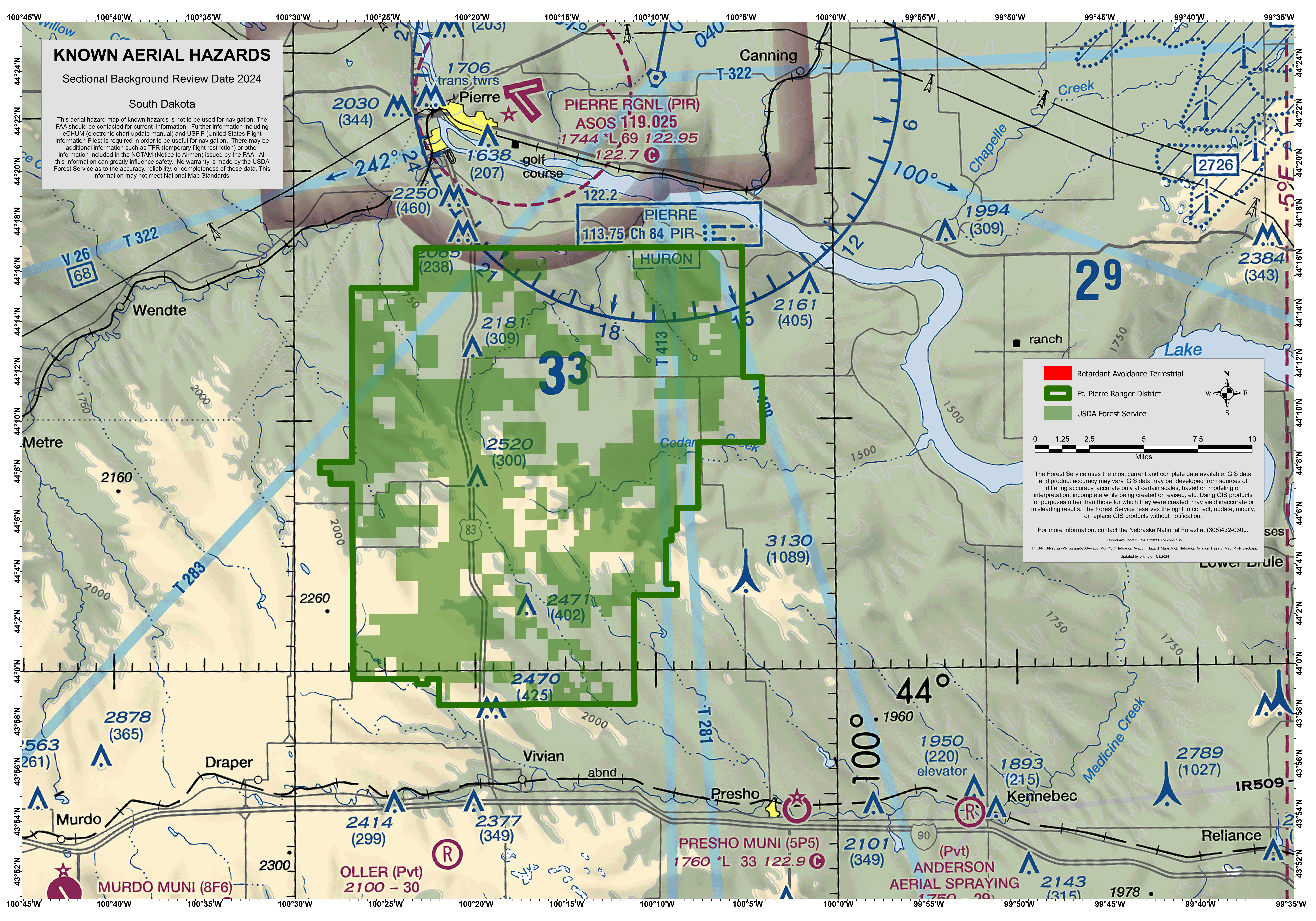


KNOWN AERIAL HAZARDS

Sectional Background Review Date 2024

South Dakota

This aerial hazard map of known hazards is not to be used for navigation. The FAA should be contacted for current information. Further information including eCHUM (electronic chart update manual) and USFIF (United States Flight Information Files) is required in order to be useful for navigation. There may be additional information such as TFR (temporary flight restriction) or other information included in the NOTAM (Notice to Airmen) issued by the FAA. All this information can greatly influence safety. No warranty is made by the USDA Forest Service as to the accuracy, reliability, or completeness of these data. This information may not meet National Map Standards.

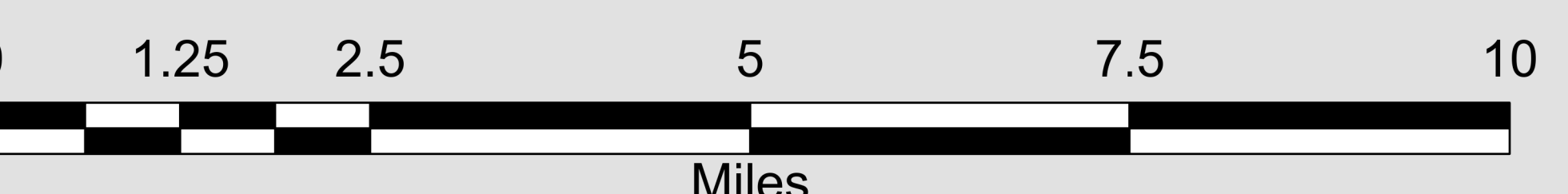
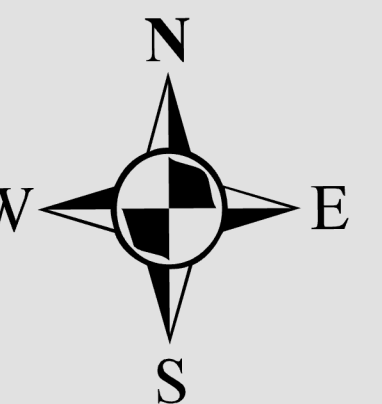


PIERRE RGNL (PIR)
ASOS 119.025
1744 *L 69 122.95
122.7

PIERRE
113.75 Ch 84 PIR

HURON

- Retardant Avoidance Terrestrial
- Ft. Pierre Ranger District
- USDA Forest Service



The Forest Service uses the most current and complete data available. GIS data and product accuracy may vary. GIS data may be developed from sources of differing accuracy, accurate only at certain scales, based on modeling or interpretation, incomplete while being created or revised, etc. Using GIS products for purposes other than those for which they were created, may yield inaccurate or misleading results. The Forest Service reserves the right to correct, update, modify, or replace GIS products without notification.

For more information, contact the Nebraska National Forest at (308)432-0300.

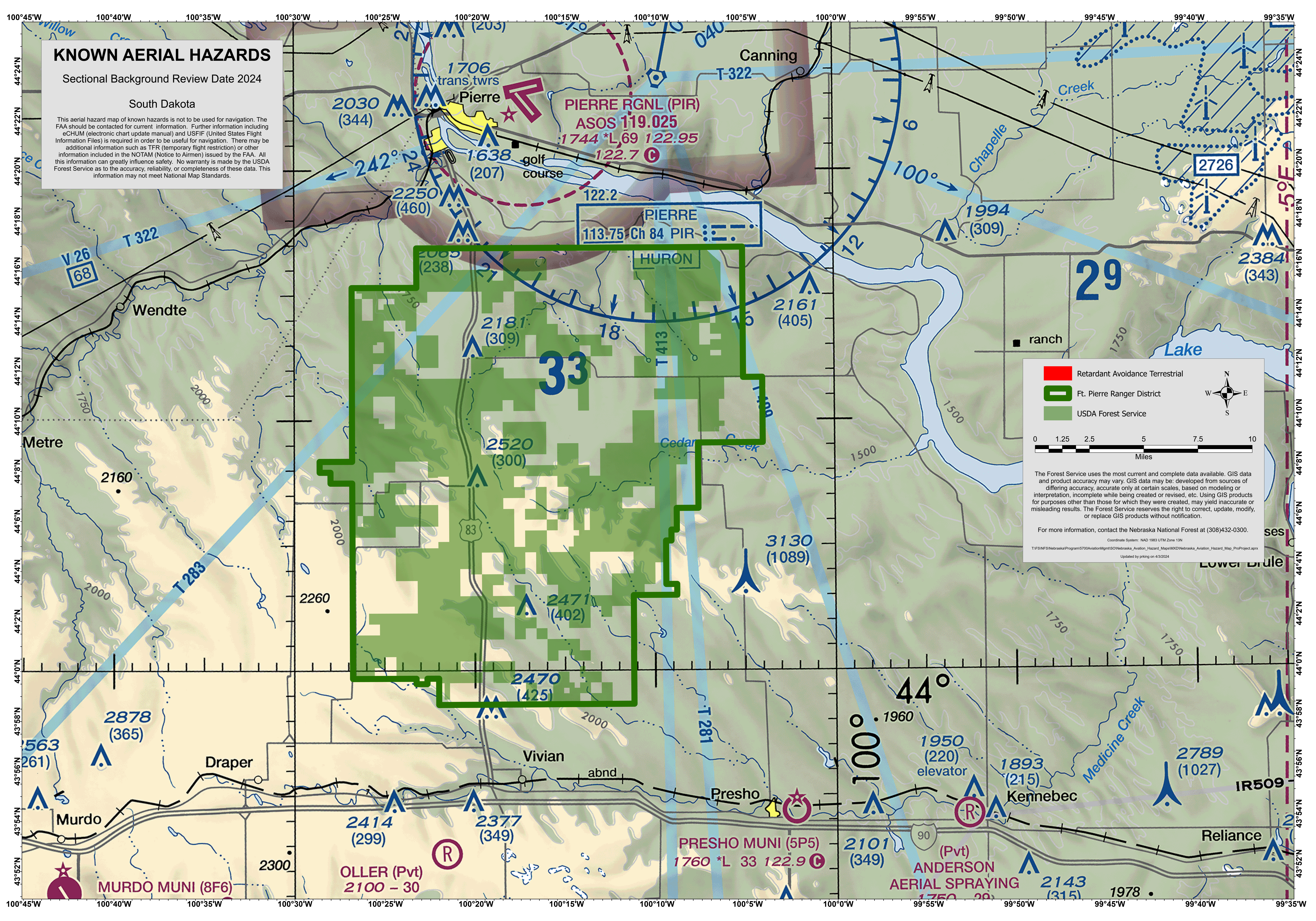
Coordinate System: NAD 1983 UTM Zone 13N
T:\FS\NFS\Nebraska\Program\5700\Aviation\Mgmt\SO\Nebraska_Aviation_Hazard_Map\MXD\Nebraska_Aviation_Hazard_Map_Proj.aprx
Updated by prking on 4/3/2024

KNOWN AERIAL HAZARDS

Sectional Background Review Date 2024

South Dakota

This aerial hazard map of known hazards is not to be used for navigation. The FAA should be contacted for current information. Further information including eCHUM (electronic chart update manual) and USFIF (United States Flight Information Files) is required in order to be useful for navigation. There may be additional information such as TFR (temporary flight restriction) or other information included in the NOTAM (Notice to Airmen) issued by the FAA. All this information can greatly influence safety. No warranty is made by the USDA Forest Service as to the accuracy, reliability, or completeness of these data. This information may not meet National Map Standards.

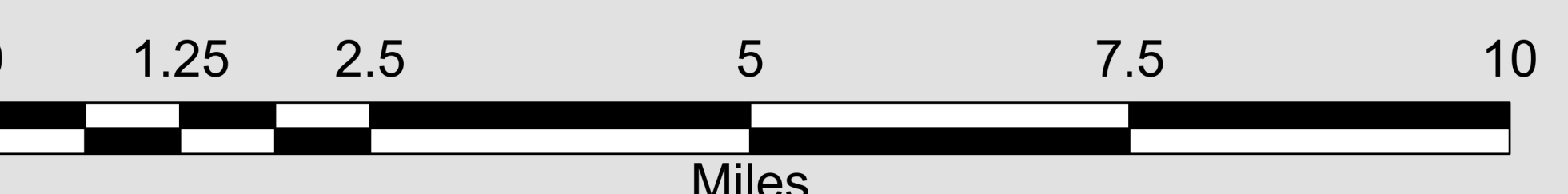
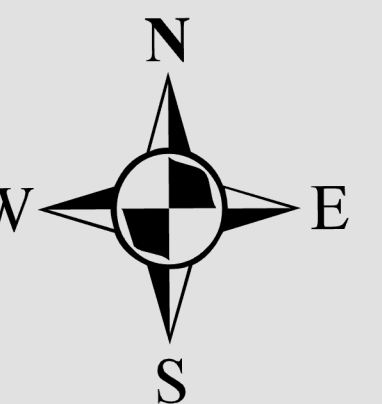


PIERRE RGNL (PIR)
ASOS 119.025
1744 *L 69 122.95
122.7

PIERRE
113.75 Ch 84 PIR

HURON

- Retardant Avoidance Terrestrial
- Ft. Pierre Ranger District
- USDA Forest Service



The Forest Service uses the most current and complete data available. GIS data and product accuracy may vary. GIS data may be developed from sources of differing accuracy, accurate only at certain scales, based on modeling or interpretation, incomplete while being created or revised, etc. Using GIS products for purposes other than those for which they were created, may yield inaccurate or misleading results. The Forest Service reserves the right to correct, update, modify, or replace GIS products without notification.

For more information, contact the Nebraska National Forest at (308)432-0300.

Coordinate System: NAD 1983 UTM Zone 13N
T:\FS\NFS\Nebraska\Program\5700\Aviation\Mgmt\SO\Nebraska_Aviation_Hazard_Map\MXD\Nebraska_Aviation_Hazard_Map_Proj.aprx
Updated by prking on 4/3/2024