

Incident Action Plan

Hidden Pines Fire

TX-TXS-016001

Wednesday

October 21, 2015 0700 Hrs

to

Thursday

October 22, 2015 0700 Hrs



Maps and IAP

INCIDENT OBJECTIVES (ICS 202)

1. Incident Name:	2. Operational Period: DAY/NIGHT	
HIDDEN PINES	Date/Time From: 10/21/2015 0700 WED	Date/Time To: 10/22/2015 0700 THU
3. Objective(s): Ensure public and firefighter safety throughout the incident. Continue suppression operations to limit structure loss and negative impact to environmentally sensitive areas. Continue to establish control lines. Convey damage assessment to Bastrop County for analysis of loss. Maintain open communication with public and media.		
4. Operational Period Command Emphasis: 		
General Situational Awareness: 		
5. Site Safety Plan Required? Yes <input type="checkbox"/> No <input checked="" type="checkbox"/>		
Approved Site Safety Plan(s) Located at: 		
6. Incident Action Plan (the items checked below are included in this Incident Action Plan):		
<input checked="" type="checkbox"/> ICS 202 <input checked="" type="checkbox"/> ICS 203 <input checked="" type="checkbox"/> ICS 204 <input checked="" type="checkbox"/> ICS 205 <input type="checkbox"/> ICS 205A <input checked="" type="checkbox"/> ICS 206	<input type="checkbox"/> ICS 207 <input checked="" type="checkbox"/> ICS 208 <input checked="" type="checkbox"/> ICS 220 <input checked="" type="checkbox"/> Map/Chart <input checked="" type="checkbox"/> Weather Forecast/Tides/Currents	Other Attachments: <input checked="" type="checkbox"/> FIRE BEHAVIOR FORECAST _____ <input type="checkbox"/> _____ <input type="checkbox"/> _____ <input type="checkbox"/> _____
7. Prepared by: JAMES R. ANDERSON Position/Title: PLANNING SECTION CHIEF	Signature: _____	
8. Approved by Incident Commander:	Name: MARK B. MORALES	Signature: _____
ICS 202	IAP Page	Date/Time: 10/20/2015 1800

ORGANIZATION ASSIGNMENT LIST (ICS 203)

1. Incident Name:		2. Operational Period: DAY/NIGHT	
HIDDEN PINES		Date/Time From: 10/21/2015 0700	WED Date/Time To: 10/22/2015 0700 THU
3. Incident Commander(s) and Command Staff:		OPS SECTION CHIEF	BARRY GARTEN / LEA WOFFORD
AGENCY ADMINISTRATOR	COUNTY JUDGE PAUL PAPE	OPS TRAINEES	GRAY / SNOW / DAVE MARTIN
IC/UC	MARK MORALES/ DANNY BRYANT (T)	Branch	FIRE
UNIFIED COMMAND	BC EMC - MIKE FISHER	DIVISION A/B/Z	WOMACK / CASE(T) / DEVRIENDT(T)
UNIFIED COMMAND	BCSO SHERIFF - TERRY PICKERING	DIVISION C	DAN MARTIN / JACK KAUFFMAN(T)
SAFETY OFFICER	SHERIDAN/BEISEL/GRUBBS (T)	DIVISION Y	KERRY CLARK
INFORMATION OFFICER	JONES / KRASKO	NIGHT DIVISION	
LIAISON OFFICER	KEITH JENKINS / FRED WETZEL	Branch	LE
4. Agency/Organization Representative(s):		BRANCH DIRECTOR	A.J. MOLINARI
Agency/Organization	Name	TRAFFIC	J. ALTUM
SMITHVILLE CITY MANAGER	ROBERT TRAMBLE	SECURITY	C. DEZARN
AQUA WATER	DAVID FLEMING	Branch	CITIZEN SERVICES
BLUEBONNET ELECTRIC	GARY GUTIERREZ	BRANCH DIRECTOR	KATE JOHNSTON
CENTER POINT ENERGY	JIM GAMBINO / LANCE ZANDONATTI	DISPLACED FAMILY SERVICES	DANIEL GERACI
LCRA TS	SUP. JASON JECMENEK	REGISTRATION / NEEDS / DONATIONS	SHEILA LOWE
MD ANDERSON	SHARON DENT	VOLUNTEER COORDINATOR	MEGAN HELTON
ENERGY TRANSFER	KENNY MORGAN	Branch	UTILITIES
TPWD READS	MCCLANAHAN / SARTOR	BRANCH DIRECTOR	SUSANNA THORNE
SMITHVILLE SCHOOLS	ZACH HARRIS	7b. Air Operations Branch:	
5. Planning Section:		AIR OPS BRANCH DIRECTOR	TERRY HARRIS
CHIEF	J. R. ANDERSON	AIR SUPPORT SUPERVISOR	MICHAEL MOWERY
RESOURCES UNIT	JANAN HAY SHARP / STEVE WELLS(T)	8. Finance/Administration Section:	
SITUATION UNIT	JASON HATTERSLEY	CHIEF	KAREN PATTERSON / TERRI OTT
DEMOBILIZATION UNIT	MICHAEL J WILLIAMS (T)	TIME UNIT	ANNA BRYANT (T)
FIRE BEHAVIOR	ANDY BAKER	PROCUREMENT UNIT	CHRISTOPHER FORD (T)
TRAINING SPECIALIST	DIANE BOLT (T)	COMPENSATION UNIT	DONNA ROGERS
GIS SPECIALIST	ALLEN SMITH / CHRIS EVANS	COST UNIT	SUSAN DEIMEL
COMPUTER SPEC.	DANIEL LEDUC / SCOTT GREST		
METEOROLOGIST	GREG MURDOCH		
6. Logistics Section:			
CHIEF	SCHIFFER / WALL(T) / LISOWSKY		
SUPPLY	BILL KITCHINGS / JANE ARTEAGA		
FACILITIES	BROSTROM / HOLSCLAW/ BAKER (T)		
GROUND SUPPORT	SOUTHARD / SMITH / CHAPIN		
COMMUNICATIONS	CLAUDE GILLELAND		
MEDICAL	SHANNA ELLIS		
SECURITY	DAY HEATHER GREEN NIGHT MIKE TIPTON		
ORDERING MANAGER	T. BERGER / M. FOLTZ(T)		
EQUIPMENT	JOHNSON / HENDERSON / SMITH		
7. Operations Section:			
9. Prepared By:	Name: J H SHARP	Position/Title: RESL	Signature:
ICS 203	IAP Page	Date/Time: 10/20/2015 1700	



INCIDENT Weather Forecast



FORECAST NO: 4

NAME OF INCIDENT: Hidden Pines

PREDICTION FOR: DAY SHIFT

UNIT: State of Texas, Buescher SP

SHIFT DATE: Wednesday Oct 21, 2015

SIGNED: **Greg Murdoch**
Incident Meteorologist

TIME AND DATE

FORECAST ISSUED: 1800 Tuesday Oct 20, 2015

...Gusty and erratic winds in and near storms...

WEATHER DISCUSSION: Moisture continues to deepen across the area with showers/storms entering the forecast. As winds aloft strengthen increasingly gusty conditions are expected at the surface, gusts to 20 mph. Even though it will still be warm relative to the time of the year, min RHs will only be able to fall to around 55%. LAL will be a 2. Be prepared to take cover from storms, remember the 30 minute rule – stay under cover for 30 minutes from the last flash or sound of thunder! During a storm, the safest place is inside your vehicle.

WEATHER FORECAST: WEDNESDAY

WEATHER: Mostly cloudy with a 30% chance of showers and storms.

MAX TEMPERATURE: 83-85F

MIN RH: 52-57%

CWR: 30%.

20 FT WINDS: SE 11-15 mph, gusty in the afternoon.

HAINES INDEX (low level): 3...Very Low.

LAL: 2

STABILITY/INVERSION: Morning Inversion at 900 ft AGL until 1030 AM...mixing to 5800 ft AGL.

WEATHER FORECAST: WEDNESDAY NIGHT

WEATHER: Mostly cloudy. A 30% chance of showers and storms early, decreasing to less than 20% by 9 PM.

MIN TEMPERATURE: 66-68F

MAX RH: 95%

CWR: 30%.

20 FT WINDS: SE 5-10 mph.

HAINES INDEX: 3...Very Low

LAL: 2

EXTENDED FORECAST: THURSDAY-SATURDAY :

Thursday/Thursday night: Cloudy with a 60% chance of showers and storms, some with heavy rain late. Max Temp/Min RH: 82/65%. Min Temp/Max RH: mid 60s/100%. SE 12-15 mph and gusty.

Friday/Friday night: Cloudy with a 80% chance of showers and storms with heavy rain. Max Temp/Min RH upper 70s/65-70%. Min Temp/Max RH: upper 60s/100%. SE 7-11 mph.

Saturday/Saturday night: Mostly cloudy with a 90% chance of showers and storms. Max Temp/Min RH: upper 70s/70%. Min Temp/Max RH: lower 60s/100%. E 4-7 mph.

Sunrise: 733 am Sunset: 654 pm

FIRE BEHAVIOR FORECAST

FORECAST NUMBER: 4	TYPE OF FIRE: Wildfire
FIRE NAME: Hidden Pines	OPERATIONAL PERIOD: October 21 st , 2015
DATE ISSUED: October 20th, 2015	TIME ISSUED: 1800
UNIT: TX-TXS	SIGNED: /s/ <i>Andy Baker</i> FBAN

INPUTS

WEATHER SUMMARY: (For full forecast refer to the Fire Weather Forecast)

****Mostly Cloudy with 30% Chance of Showers/T-storms****

Today: Partly Cloudy. Max Temp: 84 degrees Min RH: 54%

Afternoon 20 ft. Winds: SE 11-15 gusting to 20 mph Lightning Activity Level (LAL): 2

Tonight: Mostly Cloudy with a 30% chance of rain. Low Temp: 67 degrees Max RH: 95% Winds: SE at 5-10 mph

Thursday: Mostly Cloudy with a 60% chance of storms. Max Temp: 82 degrees Min RH: 65% Winds: SE 12 to 16 mph with higher gusts

OUTPUTS

FIRE BEHAVIOR

GENERAL:

- Given the elevated fine fuel moisture and significant cloud cover today, the Probability of Ignition (PIG) is 40%. This makes new fire activity unlikely, especially given the excellent mop-up that has occurred along the fire perimeter. However, should we experience a new start today, the following rates of spread and flame lengths are predicted due to the increased winds and cumulative dryness of heavy fuels:
 - ✓ Short grass (Fuel Model 1): ROS – up to 120 ch/hr, FL - 3 to 5 ft
 - ✓ Pine/Oak woodland with shrub component (Fuel Model 7): ROS – up to 38 ch/hr, FL - 5 to 7 ft
 - ✓ 2011 Bastrop Complex Burn Scar: ROS – up to 40 ch/hr, FL – 3 to 4 ft
- Fuels/Fire Danger Observations from the Bastrop RAWS as of October 20th:
 - ✓ 100 hr Dead Fuel Moisture – 12%
 - ✓ 1000 hr Dead Fuel Moisture – 13%
 - ✓ Shrub Live Fuel Moisture – 79%
 - ✓ Woody (Oak) Live Fuel Moisture – 75%
 - ✓ Energy Release Component – 52
 - ✓ Keetch-Byrum Drought Index – 755

SPECIFIC:

All Divisions: Expect continued smoldering of snags, stumps and heavy downed fuels throughout the day. Significant precipitation of a prolonged duration will be required to completely extinguish these smoldering heavies.

Divisions A/Z and Y: With increased winds, foliage is now falling from scorched canopy trees in the pine/oak woodlands creating potential for reburn within and along the fire perimeter in potentially unexpected places.

AIR OPERATIONS:

- Fog/smoke in the morning and a mostly cloudy afternoon makes for low visibility throughout the day
- Afternoon mixing heights around 5800 feet AGL. Transport winds SE at 20 mph

SAFETY

- Increased winds and gustiness in the afternoon continue to produce a high risk of falling snags.
- Lightning is a distinct possibility today so have a plan to take shelter as necessary.

Division/Group Assignment List (ICS 204 WF)

1. Incident Name:			3.			
HIDDEN PINES			Branch:		Division/Group: A/B/Z	
2. Operational Period: DAY/NIGHT						
Date/Time From: 10/21/2015 0700 WED		Date/Time To: 10/22/2015 0700 THU				
4. Operations Personnel						
OPERATIONS CHIEF (FIELD)		GARTEN/GRAY(T)/SNOW(T)		OPERATIONS CHIEF(PLANNING)		WOFFORD/MARTIN(T)
DIVISION/GROUP SUPERVISOR		WOMACK/CASE(T)/DEVRIENDT(T)		SAFETY OFFICER		CUPP, IVAN
5. Resources Assigned this Period						
Strike Team / Task Force / Resource Designator		LWD	Leader	Number Persons	Drop Off PT./Time	Pick Up PT./Time
HC2I C-1 CREW - T2IA - MESCALERO		10/30	CORIZ	21		
TIFMAS ST1		10/22	SHIPP	14		
ENG4 401		10/21	LOOP	2		
ENG6 9662			CURLES	2		
ENG6 9663			POWELL	2		
ENG6 606		10/21	HOLDSTOCK	2		
TIFMAS WT HELOTES		10/22	HUDSON	2		
TIFMAS WT 25		10/22	TUNDEL	2		
D5 4290			GRAUKE	2		
TPWD UTV 777		10/22	BAKER/ESTRELLA	2		
TPWD UTV 750		10/22	LEWIS/CRAWFORD	2		
BASTROP FD UTV			KENNEDY/BARNETTE	2		
EMTP O-36 ABEL, FRANK		10/30		1	DP#3/	DP#3/
6. Control Operations/Work Assignments:						
<p>Patrol and mop-up threats to the line. Secure and mop-up around interior structures. Identify hazard trees around structures and roads. Assess and implement erosion control measures per guidelines.</p>						
7. Special Instructions:						
<p>For power/electrical issues contact Bluebonnet Dispatch 512-332-7990 (24hr). Crews will continue ROW maintenance on utility lines. Minimize ground disturbance for protection of resources (T&E, Arch). Identify and keep heavy equipment clear of septic and water meters. For mechanical issues call Ground Support (601-405-5711). EMT @ DP#3 can be relocated as needed by DIVS. Make contact with homeowners as requested by DIVS.</p>						
8. Division/Group Communication Summary						
Function	Channel	RX Frequency N/W	RX Tone/NAC	TX Frequency N/W	TX Tone/NAC	Mode
COMMAND	1	161.8500		157.2500	156.7	
TACTICAL	3	159.4350		159.4350	114.8	
TACTICAL	4	151.4750		151.4750	114.8	
AIR TO GROUND	6	154.2800		154.2800	156.7	
9. Prepared By (Resource Unit Leader)			Approved By (Planning Section Chief)		Date	Time
J H SHARP			RED ANDERSON		10/20/2015	1800

Division/Group Assignment List (ICS 204 WF)

1. Incident Name:			3.			
HIDDEN PINES			Branch:		Division/Group: C	
2. Operational Period: DAY/NIGHT						
Date/Time From: 10/21/2015 0700 WED		Date/Time To: 10/22/2015 0700 THU				
4. Operations Personnel						
OPERATIONS CHIEF (FIELD)		GARTEN/GRAY(T)/SNOW(T)		OPERATIONS CHIEF (PLANNING)		
				WOFFORD/MARTIN(T)		
DIVISION/GROUP SUPERVISOR		MARTIN, DANIEL KAUFFMAN, JACK (T)		SAFETY OFFICER		
				WORLEY		
5. Resources Assigned this Period						
Strike Team / Task Force / Resource Designator		LWD	Leader	Number Persons	Drop Off PT./Time	Pick Up PT./Time
TFLD			HOLBROOK	1		
HC2I C-2 CREW - T2IA - NMZUA - ZUNI AGENCY #1		10/30	ETSATE	19		
TIFMAS ST 6		10/22	BISBEE	24		
ENG6 TFS			WILLIAMS	2		
D6 9692			WILLINGHAM	2		
WT TIFMAS #71		10/22	YOUNG	2		
SMITHVILLE UTV			KANA			
TPWD UTV 801		10/21	STEINHAUSER			
EMTP O-35 BURNETTE, MARC		10/31		1	DP#1/	DP#1/
6. Control Operations/Work Assignments:						
<p>Patrol and mop-up threats to the line. Secure and mop-up around interior structures. Assess and implement erosion control measures per guidelines.</p>						
7. Special Instructions:						
<p>For power/electrical issues contact Bluebonnet Dispatch 512-332-7990 (24hr). Crews will continue ROW maintenance on utility lines. Minimize ground disturbance for protection of resources (T&E, Arch). Identify and keep heavy equipment clear of septic and water meters. For mechanical issues call Ground Support (601-405-5711). EMT @ DP#1 can be relocated as needed by DIVS coordinating with DIVS Y. Make contact with homeowners as requested by DIVS.</p>						
8. Division/Group Communication Summary						
Function	Channel	RX Frequency N/W	RX Tone/NAC	TX Frequency N/W	TX Tone/NAC	Mode
COMMAND	1	161.8500		157.2500	156.7	
AIR TO GROUND	6	154.2800		154.2800	156.7	
TACTICAL	5	159.3150		159.3150	114.8	
9. Prepared By (Resource Unit Leader)			Approved By (Planning Section Chief)		Date	Time
J H SHARP			RED ANDERSON		10/20/2015	1800

Division/Group Assignment List (ICS 204 WF)

1. Incident Name:			3.			
HIDDEN PINES			Branch:		Division/Group: Y	
2. Operational Period: DAY/NIGHT						
Date/Time From: 10/21/2015 0700 WED		Date/Time To: 10/22/2015 0700 THU				
4. Operations Personnel						
OPERATIONS CHIEF (FIELD)		GARTEN/GRAY(T)/SNOW(T)		OPERATIONS CHIEF (PLANNING)		
				WOFFORD/MARTIN(T)		
DIVISION/GROUP SUPERVISOR		CLARK, KERRY		SAFETY OFFICER		
				RITTENHOUSE, JAMIE		
5. Resources Assigned this Period						
Strike Team / Task Force / Resource Designator		LWD	Leader	Number Persons	Drop Off PT./Time	Pick Up PT./Time
TIFMAS ST 8		10/22	HARTIGAN	14		
SAW TEAM			PANNELL	7		
EMTP O-35 BURNETTE, MARC		10/31		1	DP#1/	DP#1/
6. Control Operations/Work Assignments:						
<p>Patrol and mop-up threats to the line. Secure and mop-up around interior structures. Assess and implement erosion control measures per guidelines.</p>						
7. Special Instructions:						
<p>For power/electrical issues contact Bluebonnet Dispatch 512-332-7990 (24hr). Crews will continue ROW maintenance on utility lines. Minimize ground disturbance for protection of resources (T&E, Arch). Identify and keep heavy equipment clear of septic and water meters. For mechanical issues call Ground Support (601-405-5711). EMT @ DP#1 can be relocated as needed by DIVS coordinating with DIVS Y. Make contact with homeowners as requested by DIVS. TIFMAS ST 8 be prepared for IA.</p>						
8. Division/Group Communication Summary						
Function	Channel	RX Frequency N/W	RX Tone/NAC	TX Frequency N/W	TX Tone/NAC	Mode
COMMAND	1	161.8500		157.2500	156.7	
AIR TO GROUND	6	154.2800		154.2800	156.7	
TACTICAL	7	154.2650		154.2650	156.7	
9. Prepared By (Resource Unit Leader)			Approved By (Planning Section Chief)		Date	Time
J H SHARP			RED ANDERSON		10/20/2015	1800

Division/Group Assignment List (ICS 204 WF)

1. Incident Name:			3.			
HIDDEN PINES			Branch:		Division/Group: NIGHT SHIFT	
2. Operational Period: DAY/NIGHT						
Date/Time From: 10/21/2015 0700 WED		Date/Time To: 10/22/2015 0700 THU				
4. Operations Personnel						
OPERATIONS CHIEF				BRANCH DIRECTOR		
DIVISION/GROUP SUPERVISOR						
5. Resources Assigned this Period						
Strike Team / Task Force / Resource Designator		LWD	Leader	Number Persons	Drop Off PT./Time	Pick Up PT./Time
TIFMAS ST3		10/22	F. HAMBY	19		
6. Control Operations/Work Assignments: Monitor, patrol and mop-up around structures in all divisions.						
7. Special Instructions: Check in with Bastrop County Dispatch through Command channel hourly.						
8. Division/Group Communication Summary						
Function	Channel	RX Frequency N/W	RX Tone/NAC	TX Frequency N/W	TX Tone/NAC	Mode
COMMAND	1	161.8500		157.2500	156.7	
TACTICAL	7	154.2650		154.2650	156.7	
9. Prepared By (Resource Unit Leader)			Approved By (Planning Section Chief)		Date	Time
J H SHARP			RED ANDERSON		10/20/2015	1800

Division/Group Assignment List (ICS 204 WF)

1. Incident Name:			3.			
HIDDEN PINES			Branch:		Division/Group:	
2. Operational Period: DAY/NIGHT			LE		LE	
Date/Time From: 10/21/2015 0700 WED	Date/Time To: 10/22/2015 0700 THU					
4. Operations Personnel						
BRANCH DIRECTOR	LT. AJ MOLINARI					
5. Resources Assigned this Period						
Strike Team / Task Force / Resource Designator	LWD	Leader		Number Persons	Drop Off PT./Time	Pick Up PT./Time
TRAFFIC/ROAD CLOSURES		J. ALTUM		8		
SECURITY		C. DEZARN		8		
6. Control Operations/Work Assignments:						
7. Special Instructions:						
8. Division/Group Communication Summary						
Function	Channel	RX Frequency N/W	RX Tone/NAC	TX Frequency N/W	TX Tone/NAC	Mode
COMMAND						
TACTICAL						
LOGISTICS						
AIR TO GROUND						
9. Prepared By (Resource Unit Leader)			Approved By (Planning Section Chief)		Date	Time
JH SHARP			RED ANDERSON		10/20/2015	1100

AIR OPERATIONS SUMMARY		PREPARED BY: Terry Harris				PREPARED DATE/TIME: 1800 10/20/15							
1. INCIDENT NAME: Hidden Pines		2. OPERATIONAL PERIOD DATE: 10/21/15		START TIME: 0800		END TIME: 1900		SUNRISE: Giddings 0734		SUNSET: 1851			
								Austin 0737		1854			
3. REMARKS (Safety Notes, Hazards, Air Operations Special Equipment, etc.) -PILOTS WATCH OUT FOR BIRDS, BE ALERT TO HIGH WINDS AND TURBULANCE, MAINTAIN CLEAR COMMUNICATIONS. -NOTE THAT SOME TOWERS ARE NOT MARKED ON SECTIONALS, TOWERS COULD BE UP TO 2500 FEET. -ALL FIREFIGHTING AIRCRAFT NEED TO SQUAWK 1255. FLY WITH LIGHTS ON. -HEADS UP WHEN PERFORMING WATER DROPS AROUND CREWS ON THE GROUND -CREWS STAY AWAY FROM WATER DROPS INCLUDING APPROACH AND DEPARTURES -AIRCRAFT WILL BE ORDERED AND DISPATCHED UTILIZING LATITUDE AND LONGITUDE AS DEGREES DECIMAL MINUTES REQUEST FOR AIRCRAFT WILL BE MADE BY DIVISIONS OR HIGHER. REQUEST FOR AIRTANKERS MUST BE APPROVED BY OPERATIONS						4. MEDEVAC A/C: REFERENCE MEDICAL PLAN		5. TFR: FDC 5/9503; Irregular Polygon 3500 ft. MSL; 1. IMMEDIATE NOTIFICATION OF INTRUSIONS ARE TO BE PLACED WITH THE FAA. REMARKS : ADDITIONAL AIRCRAFT (AIR TANKERS HELICOPTERS, ATGS ETC) MAY BE AVAILABLE ON REQUEST					
6. PERSONNEL		Phone	7. FREQUENCIES			AM	FM	8. FIXED WING SEATS Based @ Giddings (GYB)					
AOBD: Terry Harris		936-366-4239	National Flight Following TX & RX				168.650	T-894 N194BM (AT802) Al Driesbach (SEMG) 805-703-0649					
ASGS: Mike Mowery		870-615-0287					T- 110.9	T-895 N895BM (AT802)					
ATGS: Chris Schenck N7901Q (C-401B)		936-238-0490	Secondary Flight Following (TXCALL2D) TX & RX				155.370 T – 156.7	T-866 N8510M (AT802) Royce Logan (SEMG) 979-571-7953					
			Air to Ground Primary TX & RX				159.300 T – 114.8	T-809 N6131K (AT802)					
			Air to Ground Secondary TX & RX				151.385						
			Air to Ground (VFire26) (may tone RX 156.7 if having interference) TX & RX				T- 114.8 TX 154.3025 T – 156.7						
			Air to Air Primary TX & RX			122.925							
			Air to Air Secondary TX & RX			135.675							
			COMMAND RPT SEE ICS 205			Rx:	Tx:						
			DECK FREQ:										
			TOLC:										
9. HELICOPTERS (Use Additional Sheets As Necessary)													
FAA N#	TY	MAKE/MODEL	BASE	AVAIL	START	Liason	FAA N#	TY	MAKE/MODEL	BASE	AVAIL	START	Liason

INCIDENT RADIO COMMUNICATIONS PLAN (ICS 205)

1. Incident Name:	2. Date/Time Prepared:	3. Operational Period: DAY/NIGHT	
HIDDEN PINES	Date: 10/20/2015 Time: 1300	Date/Time From: 10/21/2015 0700 WED	Date/Time To: 10/22/2015 0700 THU

4. Basic Radio Channel Use:

Zone Group	Ch #	Function	Channel Name/Trunked Radio System Talkgroup	Assignment	RX Freq	RX Tone/NAC	TX Freq	TX Tone/NAC	Mode (A,D, or M)	Remarks
	1	COMMAND	CMD1	COMMAND	161.8500		157.2500	156.7		DPS COMMAND POST
	2	TACTICAL	TAC2	UNASSIGNED	159.2850		159.2850			COMPACT
	3	TACTICAL	TAC3	DIV A/Z	159.4350		159.4350	114.8		TFS TAC7/A
	4	TACTICAL	TAC4	DIV B	151.4750		151.4750	114.8		TFS TAC 8/B
	5	TACTICAL	TAC5	DIV C	159.3150		159.3150	114.8		TFS TAC 9/C
	6	AIR TO GROUND	AIR TO G	AIR TO GROUND	154.2800		154.2800	156.7		VFIRE21
	7	TACTICAL	TAC7	DIV Y/NIGHT	154.2650		154.2650	156.7		VFIRE22
	8	TACTICAL	TAC8	UNASSIGNED	169.9000		169.9000			
	9	TACTICAL	TAC9	UNASSIGNED	168.0500		168.0500	136.5		
	10	TACTICAL	TAC10	UNASSIGNED	168.2000		168.2000	136.5		
	11	TACTICAL	TAC11	UNASSIGNED	168.6000		168.6000			
	12	TACTICAL	TAC12	UNASSIGNED	166.5625		166.5625			
	16	AIR GUARD	AIR GUARD	AIR GUARD	168.6250		168.6250	110.9		EMERGENCY USE

5. Special Instructions:

6. Prepared By (Communications Unit Leader)	Name: CLAUDE GILLELAND	Signature:
ICS 205	IAP Page	Date/Time: 10/20/2015 1300

HEALTH AND SAFETY MESSAGE

Heads up and Ready!

INCIDENT: Hidden Pines Fire

DATE: October 21, 2015

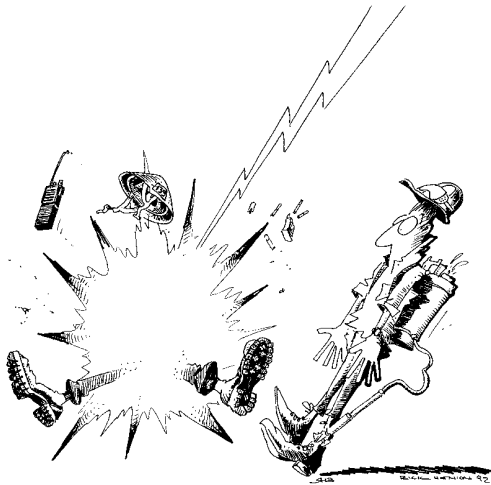
TIME: Day/Night Shift

Major Hazards and Risks:

**Thunderstorm
Hazard Tree
Complacency
Driving**

❖ **Thunderstorm** – Approaching thunderstorms may be noted by a sudden reverse in wind direction, a noticeable rise in wind speed, and a sharp drop in temperature.
Thunderstorm safety page 21 of the IRPG.

- ❖ **30/30 rule:** if you see lightning and hear thunder follow in less than 30 seconds, take shelter and do not resume work in exposed areas until 30 minutes after the storm activity has passed.
- **Hazard Tree** - Hazard trees, both dead and live green trees are a common risk encountered on our fires. All firefighters should frequently survey their work area for potential hazard trees. Eliminate hazards with qualified sawyers or designating “No Work Zones”.



4. UNFAMILIAR WITH WEATHER AND LOCAL FACTORS INFLUENCING FIRE BEHAVIOR



TELL JOHNSON THAT THE SAFETY OFFICER WOULD LIKE TO SPEAK WITH HIM...THE SOONER THE BETTER

Brian Beisel SOF1, Patrick Sheridan SOF1, Larry Grubbs SOF1(t)

MEDICAL PLAN

1. Incident/Project Name				2. Operational Period			
Hidden Pines				10/21/2015			
3. Ambulance Services							
Name	Complete Address	Phone & EMS Frequency		Advanced Life Support (ALS)			
				Yes	No		
Acadian EMS	4100 Ed Bluestein Blvd. Suite 100, Austin, TX 70721	911 512-929-1653		X	27T		
Fayette County EMS	750 E. Camp St., LaGrange, TX	911 979-968-8991		X			
4. Air Ambulance Services							
Name	Phone	Type of Aircraft & Capability					
PHI	911	EC-135 Single Patient					
Star Flight	911	EC145 2 Patient					
5. Hospitals							
Name Complete Address	GPS Datum – WGS 84	Travel Time		Phone	Helipad		Level of Care Facility
		Air	Gnd		Yes	No	
Brook Army Medical Center 3551 Roger Brook Dr Ft Sam Houston San Antonio, TX	Lat:	1.5 Hrs	3.5 Hrs	210-916-7500	■	□	Burn Center Critical Care
	Long:						
	VHF:						
Brackenridge Hospital 601 E. 15 th St. Austin TX	Lat:	15 Min	45 Min	208-799-5799	■	□	Critical Trauma
	Long:						
	VHF:						
Smithville-Seton Hospital 800 Hwy 71 East Smithville, TX	Lat:	10 Min		512-237-5736 512-237-3214	■	□	Level 4 Trauma
	Long:						
	VHF:						
St. David's South 901 W. Ben White Austin, TX	Lat:	15 Min	40 Min	(ER) 512-334-8520 512-447-2211	■	□	Cardiac Level 3 Trauma
	Long:						
	VHF:						
6. Division Branch Group		Area Location Capability					

Hidden Pines ICP- Medical 125 Keller Rd Smithville, TX DAY SHIFT	EMS Responders & Capability:	Shanna Ellis MEDL
	Equipment Available on Scene:	Basic First Aid/Trauma Kit/Preventative (Sunscreen, lip balm, etc)
	Medical Emergency Contact:	Cell Phone: 318-229-6515 Radio: Hidden Pines ICP (Day Shift)

MEDICAL PLAN

Swing Shift and Night Shift	EMS Responders & Capability:	LOCAL 911 Response after 2000.	
	Equipment Available on Scene:		
	Medical Emergency Channel:	Bastrop Co. Sheriff's Office Dispatch	
	ETA for Ambulance to Scene:	15 Mins.	
	Air:		
	Ground:		
	Approved Helispot:		
	Lat: Long:		
A/B/Z DP 1 Day Shift	EMS Responders & Capability:	Frank Abel, EMTP	
	Equipment Available on Scene:	Trauma Kit/backboard/O2/Rescu-Sleeve	
	Medical Emergency Channel:	Command	
	ETA for Ambulance to Scene:		
	Air:		
	Ground:	15 min	
	Approved Helispot:		
	Lat: N Long: W		
C/Y DP 4 Day Shift	EMS Responders & Capability:	Marc Burnette, EMP	
	Equipment Available on Scene:	Trauma Kit	
	Medical Emergency Channel:	Command	
	ETA for Ambulance to Scene:		
	Air:		
	Ground:	15 min	
	Approved Helispot:		
	Lat: N Long: W		
7. Prepared By (Medical Unit Leader)	8. Date/Time	9. Reviewed By (Safety Officer)	10. Date/Time
/s/Shanna F. Ellis MEDL	10/20/2015	/s/Larry Grubbs SOF1 (T)	10/20/2015

MEDICAL PLAN

Medical Incident Report

FOR ALL MEDICAL EMERGENCIES: IDENTIFY ON SCENE INCIDENT COMMANDER BY NAME AND POSITION AND ANNOUNCE "MEDICAL EMERGENCY" TO INITIATE RESPONSE FROM IMT COMMUNICATIONS/DISPATCH.

Use items one through nine to communicate situation to communications/dispatch.

1. CONTACT COMMUNICATIONS/DISPATCH

Ex: "Communications, Div. Alpha. Stand-by for Priority Medical Incident Report." (If life threatening request designated frequency be cleared for emergency traffic.)

2. INCIDENT STATUS: Provide incident summary and command structure.

Nature of Injury/Illness		<i>Describe the injury (Ex: Broken leg with bleeding)</i>
Incident Name		<i>Geographic Name + "Medical" (Ex: Trout Meadow Medical)</i>
Incident Commander		<i>Name of IC</i>
Patient Care		<i>Name of Care Provider (Ex: EMT Smith)</i>

3. INITIAL PATIENT ASSESSMENT: Complete this section for each patient. This is only a brief, initial assessment. Provide additional patient info after completing this 9 Line Report.

Number of Patients:	Male / Female	Age:27T	Weight:27T
Conscious? <input type="checkbox"/> YES <input type="checkbox"/> NO = MEDEVAC!			
Breathing? <input type="checkbox"/> YES <input type="checkbox"/> NO = MEDEVAC!			
Mechanism of Injury: <i>What caused the injury?</i>			
Lat/Long (Datum WGS84) <i>Ex: N 40° 42.45' x W 123° 03.24'</i>			

4. SEVERITY OF EMERGENCY, TRANSPORT PRIORITY

SEVERITY	TRANSPORT PRIORITY
<input type="checkbox"/> URGENT-RED Life threatening injury or illness. <i>Ex: Unconscious, difficulty breathing, bleeding severely, 2° – 3° burns more than 4 palm sizes, heat stroke, disoriented.</i>	Ambulance or MEDEVAC helicopter. Evacuation need is IMMEDIATE.
<input type="checkbox"/> PRIORITY-YELLOW Serious Injury or illness. <i>Ex: Significant trauma, not able to walk, 2° – 3° burns not more than 1-2 palm sizes.</i>	Ambulance or consider air transport if at remote location. Evacuation may be DELAYED.
<input type="checkbox"/> ROUTINE-GREEN Not a life threatening injury or illness. <i>Ex: Sprains, strains, minor heat-related illness.</i>	Non-Emergency. Evacuation considered Routine of Convenience.

5. TRANSPORT PLAN:

Air Transport: (Agency Aircraft Preferred)

<input type="checkbox"/> Helispot	<input type="checkbox"/> Short-haul/Hoist	<input type="checkbox"/> Life Flight	<input type="checkbox"/> Other
Ground Transport: 27T			
<input type="checkbox"/> Self-Extract	<input type="checkbox"/> Carry-Out	<input type="checkbox"/> Ambulance	<input type="checkbox"/> Other

6. ADDITIONAL RESOURCE/EQUIPMENT NEEDS:

<input type="checkbox"/> Paramedic/EMT(s)	<input type="checkbox"/> Crew(s)	<input type="checkbox"/> SKED/Backboard/C-Collar
<input type="checkbox"/> Burn Sheet(s)	<input type="checkbox"/> Oxygen	<input type="checkbox"/> Trauma Bag
<input type="checkbox"/> Medication(s)	<input type="checkbox"/> IV/Fluid(s)	<input type="checkbox"/> Cardiac Monitor/AED
<input type="checkbox"/> Other (i.e. splints, rope rescue, wheeled litter)		

7. COMMUNICATIONS:

Function	Channel Name/Number	Receive (Rx)	Tone/NAC *	Transmit (Tx)	Tone/NAC *
<i>Ex: Command</i>	<i>Forest Rpt, Ch. 2</i>	<i>168.3250</i>	<i>110.9</i>	<i>171.4325</i>	<i>110.9</i>
COMMAND					
AIR-TO-GRND					
TACTICAL					

*(NAC for digital radio system)

8. EVACUATION LOCATION:

Lat/Long (Datum WGS84) <i>EX: N 40 42.45' x W 123 03.24'</i>	
Patient's ETA to Evacuation Location:	
Helispot/Extraction Size and Hazards:	

9. CONTINGENCY:

Considerations: <i>If primary options fail, what actions can be implemented in conjunction with primary evacuation method? Be thinking ahead...</i>	REMEMBER: Confirm ETA's of resources ordered Act according to your level of training Be Alert. Keep Calm. Think Clearly. Act Decisively.
--	--

MEDICAL PLAN

ASSIGNMENT-SPECIFIC MEDICAL EMERGENCY ACTION PLAN

Pre-Planning for today's assignment – See Page 2 IRPG

What are the likely hazards that could cause injuries? What kind of severe injuries?		
Who is the likely in-charge DIVS or overhead for an emergency in your assigned area today? (i.e. "Division Zulu")		
Who are the Medical personnel assigned to your part of the incident? What are their capabilities?		
Other Emergency Responders: fire dept, crash rescue, ambulance?		
Communications: Command channel, Air to Ground, Medical helicopters, local rescue/medical?		
Transportation methods available	Ground vehicle, drop point, coordinates, travel route?	
	Aircraft I.D, helispot names, coordinates? Hoist capable, internal transport	
	Other available methods - contingency	
Most likely workforce for evacuation		

Response checklist

Who takes charge?

In the event of a medical emergency the On-Scene Point of Contact (POC) will provide the following information to Communications:

1. Declare the nature of the emergency.
 - a. Medical injury/ illness? If injury/ illness is it life threatening? (Medical Transport vs. Medical Emergency)
2. If Life Threatening, request that the designated frequency be cleared for emergency traffic
3. Identify the On-Scene POC by Last name (i.e. Smith)
4. Identify nature of incident, number injured, patient assessment(s) and location (geographic and GPS coordinates)
5. Identify On-Scene medical personnel by name (i.e. Jones)
6. Identify preferred method of patient transport
7. Request any additional resources and/ or equipment needed
8. Document all information received and transmitted on the radio or phone
9. Identify any changes in the On-Scene POC or medical personnel as they occur

Response sequence:

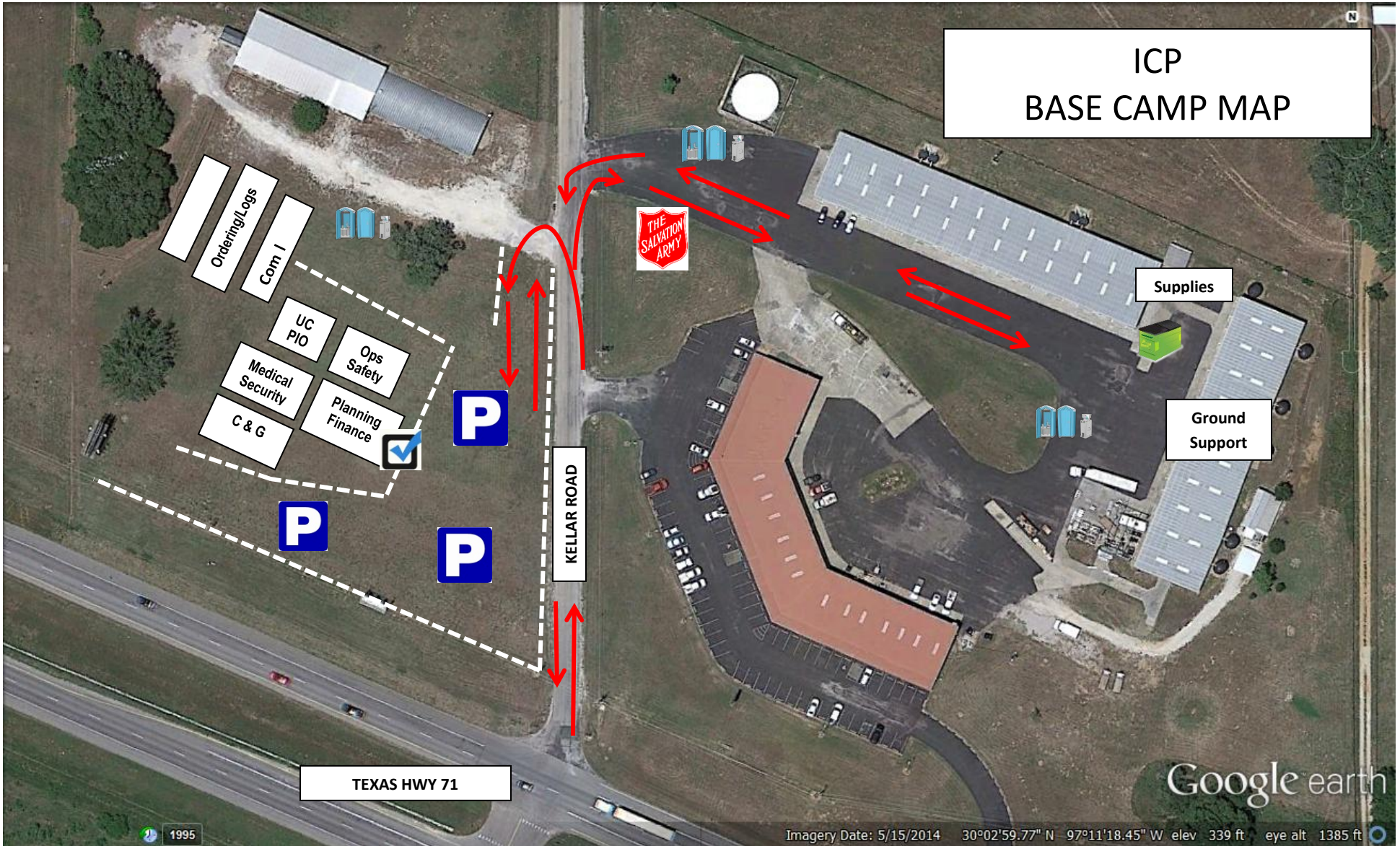
Once any injury/ illness has occurred:

- Report all injuries/ illnesses to Division Supervisors (or designees) who will assume command and notify any assigned DIVS Medical Personnel and DIVS Safety Officer.
- Division Supervisors will notify Communications with Emergency Medical Procedures information listed in Section above. **DO NOT USE THE INJURED PERSON'S NAME ON THE RADIO.**
 - DAY SHIFT:
 - Communications (Hidden Pines ICP) will notify MEDL and Incident Safety Officer to assist with coordination of further medical care and mode of transportation.
 - NIGHT SHIFT:
 - Communications (Bastrop Co. Sheriff's Office) will notify 911 or Sheriff's Department for response and transport.
- On-Scene medical personnel will stabilize patient.
- Ambulance and/or air resources will be coordinated through Communications, MEDL, and SOF1.

In ICP- Contact Medical Unit with patient complaint/condition and location.

- Notify Medical Unit of any injury/ illnesses being transported to Medical Unit prior to transport.
- **Request that FFTR/Engine Crews or Single Resources let DIVS know if they have any EMTs or Paramedics and if they have equipment with them.**

ICP BASE CAMP MAP



CHECK IN



PORT-A-JON
HAND WASH



DUMPSTER



PARKING



FENCING



TRAFFIC
FLOW

