

Incident Action Plan

Hidden Pines Fire

TX-TXS-016001

Thursday

October 22, 2015

0700 – 2400 hrs



Maps and IAP

INCIDENT OBJECTIVES (ICS 202)

1. Incident Name:	2. Operational Period: DAY/SWING	
HIDDEN PINES	Date/Time From: 10/22/2015 0700 THU	Date/Time To: 10/22/2015 2359 THU
3. Objective(s): Ensure public and firefighter safety throughout the incident. Continue suppression operations to limit structure loss and negative impact to environmentally sensitive areas. Continue to establish control lines. Convey damage assessment to Bastrop County for analysis of loss. Maintain open communication with public and media.		
4. Operational Period Command Emphasis: 		
General Situational Awareness: 		
5. Site Safety Plan Required? Yes <input type="checkbox"/> No <input checked="" type="checkbox"/>		
Approved Site Safety Plan(s) Located at: 		
6. Incident Action Plan (the items checked below are included in this Incident Action Plan):		
<input checked="" type="checkbox"/> ICS 202 <input checked="" type="checkbox"/> ICS 203 <input checked="" type="checkbox"/> ICS 204 <input checked="" type="checkbox"/> ICS 205 <input type="checkbox"/> ICS 205A <input checked="" type="checkbox"/> ICS 206	<input type="checkbox"/> ICS 207 <input checked="" type="checkbox"/> ICS 208 <input checked="" type="checkbox"/> ICS 220 <input checked="" type="checkbox"/> Map/Chart <input checked="" type="checkbox"/> Weather Forecast/Tides/Currents	Other Attachments: <input checked="" type="checkbox"/> FIRE BEHAVIOR FORECAST _____ <input type="checkbox"/> _____ <input type="checkbox"/> _____ <input type="checkbox"/> _____
7. Prepared by: JAMES R. ANDERSON	Position/Title: PLANNING SECTION CHIEF	Signature:
8. Approved by Incident Commander:		Signature:
Name: MARK B. MORALES		
ICS 202	IAP Page	Date/Time: 10/21/2015 1800



INCIDENT Weather Forecast



FORECAST NO: 5

NAME OF INCIDENT: Hidden Pines

PREDICTION FOR: DAY SHIFT

UNIT: State of Texas, Buescher SP

SHIFT DATE: Thursday Oct 22, 2015

SIGNED: **Greg Murdoch**
Incident Meteorologist

TIME AND DATE

FORECAST ISSUED: 1800 Wednesday Oct 21, 2015

...Gusty and erratic winds in and near storms...

WEATHER DISCUSSION: Rich gulf moisture continues to pour into the area ahead of an upper trough and abundant Pacific moisture is being pulled into Texas. This will result in a prolonged period with a very good chance of showers/storms. Gusty winds will continue and min RHs will only be able to fall to around 65% today. LAL will be a 3 to 4. Be prepared to take cover from storms, remember the 30 minute rule – stay under cover for 30 minutes from the last flash or thunder! During a storm, inside your vehicle is the safest place to be if caught out on the fire line.

WEATHER FORECAST: THURSDAY

WEATHER: Mostly cloudy with a 80% chance of showers and storms, some with heavy rain.

MAX TEMPERATURE: 81-83 F

MIN RH: 64-68%

CWR: 80%.

20 FT WINDS: SE 12-16 mph, gusty in the afternoon.

HAINES INDEX (low level): 2...Very Low.

LAL: 3

STABILITY/INVERSION: Morning Inversion at 1200 ft AGL until 1030 AM...mixing to 5500 ft AGL.

WEATHER FORECAST: THURSDAY NIGHT

WEATHER: Mostly cloudy. A 60% chance of showers and storms, some with heavy rain.

MIN TEMPERATURE: 67-69F

MAX RH: 95%

CWR: 60%.

20 FT WINDS: SE 5-10 mph.

HAINES INDEX: 2...Very Low

LAL: 3 to 4

EXTENDED FORECAST: FRIDAY-SUNDAY :

Friday/Friday night: Cloudy with a 80% chance of showers and storms with heavy rain. Max Temp/Min RH upper 70s-80/65-70%. Min Temp/Max RH: upper 60s/100%. SE 9-12 mph.

Saturday/Saturday night: Mostly cloudy with a 80% chance of showers and storms. Max Temp/Min RH: upper 70s/70%. Min Temp/Max RH: lower 60s/100%. E 4-7 mph.

Sunday/Sunday night: Cloudy with a 40% chance of showers and storms, mainly before 3 pm. Max Temp/Min RH: 75/65-70%. Min Temp/Max RH: mid 60s/100%. N 10 mph.

Sunrise: 734 am Sunset: 653 pm

FIRE BEHAVIOR FORECAST

FORECAST NUMBER: 5

TYPE OF FIRE: Wildfire

FIRE NAME: Hidden Pines

OPERATIONAL PERIOD: October 22nd, 2015

DATE ISSUED: October 21st, 2015

TIME ISSUED: 1800

UNIT: TX-TXS

SIGNED: */s/ Andy Baker* FBAN

INPUTS

WEATHER SUMMARY: (For full forecast refer to the Fire Weather Forecast)

****Mostly Cloudy with 80% Chance of Storms/Heavy Rain****

Today: Mostly Cloudy. Max Temp: 83 degrees Min RH: 62%

Afternoon 20 ft. Winds: SE 12-16 gusting to 23 mph Lightning Activity Level (LAL): 3-4

Tonight: Mostly Cloudy with a 60% chance of rain. Low Temp: 66 degrees Max RH: 95% Winds: SE at 5-10 mph

Friday: Mostly Cloudy with an 80% chance of storms. Max Temp: 82 degrees Min RH: 65% Winds: SE 12 to 16 mph with higher gusts

OUTPUTS

FIRE BEHAVIOR

GENERAL:

- Dead fuel moistures will be at or above the moisture of extinction in light fuels today (12-15%) which leads to 0% Probability of Ignition (PIG) and no fire spread in grass/timber litter and 20% PIG with minimal fire spread in brush/slash.

SPECIFIC:

All Divisions: Expect continued smoldering of snags, stumps and heavy downed fuels. Significant precipitation over several days will be required to completely extinguish these smoldering heavies.

AIR OPERATIONS:

- Mostly cloudy, rainy conditions makes for low visibility throughout the day
- Afternoon mixing heights around 6000 feet AGL. Transport winds SE at 25 mph

SAFETY

- Increased winds and gustiness in the afternoon continue to produce a high risk of falling snags.
- Lightning and heavy rain is likely today so have a plan to take shelter as necessary.

ORGANIZATION ASSIGNMENT LIST (ICS 203)

1. Incident Name:		2. Operational Period: DAY/SWING	
HIDDEN PINES		Date/Time From: 10/22/2015 0700	THU Date/Time To: 10/22/2015 2359 THU
3. Incident Commander(s) and Command Staff:		OPS SECTION CHIEF	BARRY GARTEN / LEA WOFFORD
AGENCY ADMINISTRATOR	COUNTY JUDGE PAUL PAPE	OPS TRAINEES	GRAY / SNOW / DAVE MARTIN
IC/UC	MARK MORALES/ DANNY BRYANT (T)	Branch	FIRE
UNIFIED COMMAND	BC EMC - MIKE FISHER	DIVISION A/B/Z	WOMACK / DEVRIENDT(T)
UNIFIED COMMAND	BCSO SHERIFF - TERRY PICKERING	DIVISION C	DAN MARTIN / JACK KAUFFMAN(T)
SAFETY OFFICER	SHERIDAN/BEISEL/GRUBBS (T)	DIVISION Y	KERRY CLARK
INFORMATION OFFICER	JONES / KRASKO	NIGHT DIVISION	
LIAISON OFFICER	KEITH JENKINS / FRED WETZEL	Branch	CITIZEN SERVICES
4. Agency/Organization Representative(s):		BRANCH DIRECTOR	KATE JOHNSTON
Agency/Organization	Name	DISPLACED FAMILY SERVICES	DANIEL GERACI
SMITHVILLE CITY MANAGER	ROBERT TRAMBLE	REGISTRATION / NEEDS / DONATIONS	SHEILA LOWE
AQUA WATER	DAVID FLEMING	VOLUNTEER COORDINATOR	MEGAN HELTON
BLUEBONNET ELECTRIC	GARY GUTIERREZ	Branch	UTILITIES
CENTER POINT ENERGY	JIM GAMBINO / LANCE ZANDONATTI	BRANCH DIRECTOR	SUSANNA THORNE
LCRA TS	SUP. JASON JECMENEK	7b. Air Operations Branch:	
MD ANDERSON	SHARON DENT	AIR OPS BRANCH DIRECTOR	TERRY HARRIS
ENERGY TRANSFER	KENNY MORGAN	AIR SUPPORT SUPERVISOR	MICHAEL MOWERY
TPWD READS	MCCLANAHAN / SARTOR	8. Finance/Administration Section:	
SMITHVILLE SCHOOLS	ZACH HARRIS	CHIEF	KAREN PATTERSON / TERRI OTT
5. Planning Section:		TIME UNIT	ANNA BRYANT (T)
CHIEF	J. R. ANDERSON	PROCUREMENT UNIT	CHRISTOPHER FORD (T)
RESOURCES UNIT	JANAN HAY SHARP / STEVE WELLS(T)	COMPENSATION UNIT	DONNA ROGERS
SITUATION UNIT	JASON HATTERSLEY	COST UNIT	SUSAN DEIMEL
DEMOBILIZATION UNIT	MICHAEL J WILLIAMS (T)		
FIRE BEHAVIOR	ANDY BAKER		
TRAINING SPECIALIST	DIANE BOLT (T)		
GIS SPECIALIST	ALLEN SMITH / CHRIS EVANS		
COMPUTER SPEC.	DANIEL LEDUC / SCOTT GREEST		
METEOROLOGIST	GREG MURDOCH		
6. Logistics Section:			
CHIEF	SCHIFFER / WALL(T) / LISOWSKY		
SUPPLY	BILL KITCHINGS / JANE ARTEAGA		
FACILITIES	BROSTROM / HOLSCLAW/ BAKER (T)		
GROUND SUPPORT	SOUTHARD / SMITH / CHAPIN		
COMMUNICATIONS			
MEDICAL	SHANNA ELLIS		
SECURITY	DAY HEATHER GREEN NIGHT MIKE TIPTON		
ORDERING MANAGER	T. BERGER / M. FOLTZ(T)		
EQUIPMENT	JOHNSON / HENDERSON / SMITH		
7. Operations Section:			
9. Prepared By:	Name: J H SHARP	Position/Title: RESL	Signature:
ICS 203	IAP Page	Date/Time: 10/21/2015 1700	

Division/Group Assignment List (ICS 204 WF)

1. Incident Name:			3.			
HIDDEN PINES			Branch:		Division/Group: A/B/Z	
2. Operational Period: DAY/SWING						
Date/Time From: 10/22/2015 0700 THU		Date/Time To: 10/22/2015 2359 THU				
4. Operations Personnel						
OPERATIONS CHIEF (FIELD)		GARTEN/GRAY(T)/SNOW(T)		OPERATIONS CHIEF(PLANNING)		WOFFORD/MARTIN(T)
DIVISION/GROUP SUPERVISOR		WOMACK/DEVRIENDT(T)		SAFETY OFFICER		CUPP, IVAN
5. Resources Assigned this Period						
Strike Team / Task Force / Resource Designator		LWD	Leader	Number Persons	Drop Off PT./Time	Pick Up PT./Time
HC2I C-1 CREW - T2IA - MESCALERO		10/30	CORIZ	21		
TIFMAS ST1		10/22	SHIPP	14		
ENG6 9662			CURLES	2		
ENG6 9663			POWELL	2		
TIFMAS WT HELOTES		10/22	HUDSON	2		
TIFMAS WT 25		10/22	TUNDEL	2		
D5 4290			GRAUKE	2		
EMTP O-36 ABEL, FRANK		10/30		1	DP#3/	DP#3/
6. Control Operations/Work Assignments:						
<p>Patrol and mop-up threats to the line. Secure and mop-up around interior structures. Identify hazard trees around structures and roads. Assess and implement erosion control measures per guidelines. Make contact with homeowners as requested by DIVS.</p>						
7. Special Instructions:						
<p>For power/electrical issues contact Bluebonnet Dispatch 512-332-7990 (24hr). Crews will continue ROW maintenance. Minimize ground disturbance for protection of resources (T&E, Arch). Identify and keep heavy equipment clear of septic and water meters. For mechanical issues call Ground Support (601-405-5711). EMT @ DP#3 can be relocated as needed by DIVS.</p>						
8. Division/Group Communication Summary						
Function	Channel	RX Frequency N/W	RX Tone/NAC	TX Frequency N/W	TX Tone/NAC	Mode
COMMAND	1	161.8500		157.2500	156.7	
TACTICAL	3	159.4350		159.4350	114.8	
TACTICAL	4	151.4750		151.4750	114.8	
AIR TO GROUND	6	154.2800		154.2800	156.7	
9. Prepared By (Resource Unit Leader)			Approved By (Planning Section Chief)		Date	Time
J H SHARP			RED ANDERSON		10/21/2015	1800

Division/Group Assignment List (ICS 204 WF)

1. Incident Name:			3.			
HIDDEN PINES			Branch:		Division/Group: C	
2. Operational Period: DAY/SWING						
Date/Time From: 10/22/2015 0700 THU		Date/Time To: 10/22/2015 2359 THU				
4. Operations Personnel						
OPERATIONS CHIEF (FIELD)		GARTEN/GRAY(T)/SNOW(T)		OPERATIONS CHIEF (PLANNING)		
				WOFFORD/MARTIN(T)		
DIVISION/GROUP SUPERVISOR		MARTIN, DANIEL KAUFFMAN, JACK (T)		SAFETY OFFICER		
				WORLEY		
5. Resources Assigned this Period						
Strike Team / Task Force / Resource Designator		LWD	Leader	Number Persons	Drop Off PT./Time	Pick Up PT./Time
HC2I C-2 CREW - T2IA - NMZUA - ZUNI AGENCY #1		10/30	ETSATE	19		
TIFMAS ST 6		10/22	BISBEE	24		
D6 9692			WILLINGHAM	2		
WT TIFMAS #71		10/22	YOUNG	2		
EMTP O-35 BURNETTE, MARC		10/31		1	DP#1/	DP#1/
6. Control Operations/Work Assignments:						
<p>Patrol and mop-up threats to the line. Secure and mop-up around interior structures. Assess and implement erosion control measures per guidelines. Make contact with homeowners as requested by DIVS.</p>						
7. Special Instructions:						
<p>For power/electrical issues contact Bluebonnet Dispatch 512-332-7990 (24hr). Crews will continue ROW maintenance. Minimize ground disturbance for protection of resources (T&E, Arch). Identify and keep heavy equipment clear of septic and water meters. For mechanical issues call Ground Support (601-405-5711). EMT @ DP#1 can be relocated as needed by DIVS coordinating with DIVS Y.</p>						
8. Division/Group Communication Summary						
Function	Channel	RX Frequency N/W	RX Tone/NAC	TX Frequency N/W	TX Tone/NAC	Mode
COMMAND	1	161.8500		157.2500	156.7	
AIR TO GROUND	6	154.2800		154.2800	156.7	
TACTICAL	5	159.3150		159.3150	114.8	
9. Prepared By (Resource Unit Leader)			Approved By (Planning Section Chief)		Date	Time
J H SHARP			RED ANDERSON		10/21/2015	1800

Division/Group Assignment List (ICS 204 WF)

1. Incident Name:			3.			
HIDDEN PINES			Branch:		Division/Group: Y	
2. Operational Period: DAY/SWING						
Date/Time From: 10/22/2015 0700 THU		Date/Time To: 10/22/2015 2359 THU				
4. Operations Personnel						
OPERATIONS CHIEF (FIELD)		GARTEN/GRAY(T)/SNOW(T)		OPERATIONS CHIEF (PLANNING)		
				WOFFORD/MARTIN(T)		
DIVISION/GROUP SUPERVISOR		CLARK, KERRY		SAFETY OFFICER		
				RITTENHOUSE, JAMIE		
5. Resources Assigned this Period						
Strike Team / Task Force / Resource Designator		LWD	Leader	Number Persons	Drop Off PT./Time	Pick Up PT./Time
TIFMAS ST 8		10/22	HARTIGAN	14		
SAW TEAM		10/22	PANNELL	7		
EMTP O-35 BURNETTE, MARC		10/31		1	DP#1/	DP#1/
6. Control Operations/Work Assignments:						
<p>Patrol and mop-up threats to the line. Secure and mop-up around interior structures. Assess and implement erosion control measures per guidelines. Make contact with homeowners as requested by DIVS.</p>						
7. Special Instructions:						
<p>For power/electrical issues contact Bluebonnet Dispatch 512-332-7990 (24hr). Crews will continue ROW maintenance. Minimize ground disturbance for protection of resources (T&E, Arch). Identify and keep heavy equipment clear of septic and water meters. For mechanical issues call Ground Support (601-405-5711). EMT @ DP#1 can be relocated as needed by DIVS coordinating with DIVS C. TIFMAS ST 8 be prepared for IA.</p>						
8. Division/Group Communication Summary						
Function	Channel	RX Frequency N/W	RX Tone/NAC	TX Frequency N/W	TX Tone/NAC	Mode
COMMAND	1	161.8500		157.2500	156.7	
AIR TO GROUND	6	154.2800		154.2800	156.7	
TACTICAL	7	154.2650		154.2650	156.7	
9. Prepared By (Resource Unit Leader)			Approved By (Planning Section Chief)		Date	Time
J H SHARP			RED ANDERSON		10/21/2015	1800

Division/Group Assignment List (ICS 204 WF)

1. Incident Name:			3.				
HIDDEN PINES			Branch:		Division/Group: NIGHT		
2. Operational Period: DAY/SWING							
Date/Time From: 10/22/2015 0700 THU		Date/Time To: 10/22/2015 2359 THU					
4. Operations Personnel							
OPERATIONS CHIEF				BRANCH DIRECTOR			
DIVISION/GROUP SUPERVISOR							
5. Resources Assigned this Period							
Strike Team / Task Force / Resource Designator		LWD	Leader		Number Persons	Drop Off PT./Time	Pick Up PT./Time
TIFMAS ST3		10/22	F. HAMBY		19		
6. Control Operations/Work Assignments:							
Monitor, patrol and mop-up around structures in all divisions.							
7. Special Instructions:							
Check in with Bastrop County Dispatch through Command channel hourly. Start shift 1200/End shift 2400.							
8. Division/Group Communication Summary							
Function	Channel	RX Frequency N/W	RX Tone/NAC	TX Frequency N/W	TX Tone/NAC	Mode	
COMMAND	1	161.8500		157.2500	156.7		
TACTICAL	7	154.2650		154.2650	156.7		
9. Prepared By (Resource Unit Leader)			Approved By (Planning Section Chief)		Date	Time	
J H SHARP			RED ANDERSON		10/21/2015	1800	

Division/Group Assignment List (ICS 204 WF)

1. Incident Name:				3.				
HIDDEN PINES				Branch: CITIZN SERV		Division/Group: DISPLACED FAMILY SERVICE		
2. Operational Period: DAY/SWING								
Date/Time From: 10/22/2015 0700 THU		Date/Time To: 10/22/2015 2359 THU						
4. Operations Personnel								
BRANCH DIRECTOR KATE JOHNSTON 512-629-6960				DIVISION/GROUP SUPERVISOR DANIEL GERACI 512-825-8211				
5. Resources Assigned this Period								
Strike Team / Task Force / Resource Designator			LWD	Leader		Number Persons	Drop Off PT./Time	Pick Up PT./Time
6. Control Operations/Work Assignments:								
Register displaced families and report to BCLTRT. Identify & communicate services available to community. Work with BCLTRT and other disaster relief organizations approved by BCLTRT to facilitate effective DFS center.								
7. Special Instructions:								
Report volunteer hours and cost to Bastrop County Finance daily by 8:30 AM.								
8. Division/Group Communication Summary								
Function		Channel	RX Frequency N/W	RX Tone/NAC	TX Frequency N/W	TX Tone/NAC	Mode	
COMMAND								
TACTICAL								
LOGISTICS								
AIR TO GROUND								
9. Prepared By (Resource Unit Leader)				Approved By (Planning Section Chief)		Date	Time	
MICHAEL J WILLIAMS				RED ANDERSON		10/21/2015	2100	

Division/Group Assignment List (ICS 204 WF)

1. Incident Name:			3.			
HIDDEN PINES			Branch: CITZN SERV		Division/Group: REGEST / NEEDS / DONATIONS	
2. Operational Period: DAY/SWING						
Date/Time From: 10/22/2015 0700 THU		Date/Time To: 10/22/2015 2359 THU				
4. Operations Personnel						
BRANCH DIRECTOR		KATE JOHNSTON 512-629-6960		DIVISION/GROUP SUPERVISOR		SHEILA LOWE 512-521-3001
5. Resources Assigned this Period						
Strike Team / Task Force / Resource Designator		LWD	Leader	Number Persons	Drop Off PT./Time	Pick Up PT./Time
6. Control Operations/Work Assignments: Register & Develop records for all survivors. Identify survivor unmet needs. Identify donation needs & develop donation plan. Collect and appropriately distribute donations of monetary amounts & physical goods.						
7. Special Instructions: Report volunteer hours and cost to Bastrop County Finance daily by 8:30 AM.						
8. Division/Group Communication Summary						
Function		Channel	RX Frequency N/W	RX Tone/NAC	TX Frequency N/W	TX Tone/NAC Mode
COMMAND						
TACTICAL						
LOGISTICS						
AIR TO GROUND						
9. Prepared By (Resource Unit Leader)			Approved By (Planning Section Chief)		Date	Time
MICHAEL J WILLIAMS			RED ANDERSON		10/21/2015	2100

INCIDENT RADIO COMMUNICATIONS PLAN (ICS 205)

1. Incident Name:	2. Date/Time Prepared:	3. Operational Period: DAY/SWING	
HIDDEN PINES	Date: 10/21/2015 Time: 1300	Date/Time From: 10/22/2015 0700 THU	Date/Time To: 10/22/2015 2359 THU

4. Basic Radio Channel Use:

Zone Group	Ch #	Function	Channel Name/Trunked Radio System Talkgroup	Assignment	RX Freq	RX Tone/NAC	TX Freq	TX Tone/NAC	Mode (A,D, or M)	Remarks
	1	COMMAND	CMD1	COMMAND	161.8500		157.2500	156.7		DPS COMMAND POST
	2	TACTICAL	TAC2	UNASSIGNED	159.2850		159.2850			COMPACT
	3	TACTICAL	TAC3	DIV A/Z	159.4350		159.4350	114.8		TFS TAC7/A
	4	TACTICAL	TAC4	DIV B	151.4750		151.4750	114.8		TFS TAC 8/B
	5	TACTICAL	TAC5	DIV C	159.3150		159.3150	114.8		TFS TAC 9/C
	6	AIR TO GROUND	AIR TO G	AIR TO GROUND	154.2800		154.2800	156.7		VFIRE21
	7	TACTICAL	TAC7	DIV Y/NIGHT	154.2650		154.2650	156.7		VFIRE22
	8	TACTICAL	TAC8	UNASSIGNED	169.9000		169.9000			
	9	TACTICAL	TAC9	UNASSIGNED	168.0500		168.0500	136.5		
	10	TACTICAL	TAC10	UNASSIGNED	168.2000		168.2000	136.5		
	11	TACTICAL	TAC11	UNASSIGNED	168.6000		168.6000			
	12	TACTICAL	TAC12	UNASSIGNED	166.5625		166.5625			
	16	AIR GUARD	AIR GUARD	AIR GUARD	168.6250		168.6250	110.9		EMERGENCY USE

5. Special Instructions:


6. Prepared By (Communications Unit Leader)	Name: CLAUDE GILLELAND	Signature:
ICS 205	IAP Page	Date/Time: 10/21/2015 1300

AIR OPERATIONS SUMMARY		PREPARED BY: Terry Harris				PREPARED DATE/TIME: 1800 10/21/15							
1. INCIDENT NAME: Hidden Pines		2. OPERATIONAL PERIOD DATE: 10/22/15		START TIME: 0800		END TIME: 1900		SUNRISE: Giddings 0734SUNSET: 1850					
3. REMARKS (Safety Notes, Hazards, Air Operations Special Equipment, etc.) -PILOTS WATCH OUT FOR BIRDS, BE ALERT TO HIGH WINDS AND TURBULANCE, MAINTAIN CLEAR COMMUNICATIONS. -NOTE THAT SOME TOWERS ARE NOT MARKED ON SECTIONALS, TOWERS COULD BE UP TO 2500 FEET. -ALL FIREFIGHTING AIRCRAFT NEED TO SQUAWK 1255. FLY WITH LIGHTS ON. -HEADS UP WHEN PERFORMING WATER DROPS AROUND CREWS ON THE GROUND -CREWS STAY AWAY FROM WATER DROPS INCLUDING APPROACH AND DEPARTURES -AIRCRAFT WILL BE ORDERED AND DISPATCHED UTILIZING LATITUDE AND LONGITUDE AS DEGREES DECIMAL MINUTES REQUEST FOR AIRCRAFT WILL BE MADE BY DIVISIONS OR HIGHER. REQUEST FOR AIRTANKERS MUST BE APPROVED BY OPERATIONS						4. MEDEVAC A/C: REFERENCE MEDICAL PLAN		5. TFR: FDC 5/9503; Irregular Polygon 3500 ft. MSL; 1. IMMEDIATE NOTIFICATION OF INTRUSIONS ARE TO BE PLACED WITH THE FAA. REMARKS : ADDITIONAL AIRCRAFT (AIR TANKERS HELICOPTERS, ATGS ETC) MAY BE AVAILABLE ON REQUEST					
6. PERSONNEL		Phone		7. FREQUENCIES		AM		FM		8. FIXED WING SEATS Based @ Giddings (GYB)			
AOBD: Terry Harris		936-366-4239		National Flight Following TX & RX				168.650		T-894 N194BM (AT802) Al Driesbach (SEMG) 805-703-0649			
ASGS: Mike Mowery		870-615-0287						T- 110.9		T-895 N895BM (AT802)			
ATGS: Chris Schenck N7901Q (C-401B)		936-238-0490		Secondary Flight Following (TXCALL2D) TX & RX				155.370 T – 156.7					
ur				Air to Ground Primary TX & RX				159.300 T – 114.8		T-866 N8510M (AT802) Royce Logan (SEMG) 979-571-7953			
				Air to Ground Secondary TX & RX				151.385 T- 114.8		T-809 N6131K (AT802) T-8 09 & T-866 hangered in Fredicksburg.			
				Air to Ground (VFire26) (may tone RX 156.7 if having interference) TX & RX				TX 154.3025 T – 156.7					
				Air to Air Primary TX & RX		122.925							
				Air to Air Secondary TX & RX		135.675							
				COMMAND RPT SEE ICS 205		Rx: Tx:							
				DECK FREQ:									
				TOLC:									
9. HELICOPTERS (Use Additional Sheets As Necessary)													
FAA N#	TY	MAKE/MODEL	BASE	AVAIL	START	Liason	FAA N#	TY	MAKE/MODEL	BASE	AVAIL	START	Liason

HEALTH AND SAFETY MESSAGE

SAFETY starts with ***YOU***

We are **ALL** accountable for **SAFE** behaviors

INCIDENT: Hidden Pines Fire	DATE: October 22, 2015 Operational Period: Day
Major Hazards and Risks: Weather Change. Driving. Footing. Snags. Complacency.	
<p style="text-align: center;">Hazard Mitigation</p> <ul style="list-style-type: none">• Drive defensively with lights on. Slow down.• Hazard trees are still a concern on every division. Look up down and all around.• Slippery footing on rocks, logs and steep terrain. Pick and choose engagement points.• Be aware of public.• Complacency can set in. Be Professional.	
<p style="text-align: center;">Watch Out Situation of the Day</p> <div data-bbox="175 1199 672 1894"><p style="text-align: center;"><i>Noah's Ark Complaints Department</i></p><p style="text-align: center;"><i>YOU ONLY BROUGHT TWO ANTS?</i></p></div>	<p style="text-align: center;">Hazard Mitigation</p> <ul style="list-style-type: none">• Think about what you are doing.• Think about why you are doing it.• Think about how it is important.• Think about what a professional job looks like.

MEDICAL PLAN

1. Incident/Project Name					2. Operational Period					
Hidden Pines					10/22/2015					
3. Ambulance Services										
Name		Complete Address			Phone & EMS Frequency		Advanced Life Support (ALS) Yes No			
Acadian EMS		4100 Ed Bluestein Blvd. Suite 100, Austin, TX 70721			911 512-929-1653		X		27T	
Fayette County EMS		750 E. Camp St., LaGrange, TX			911 979-968-8991		X			
4. Air Ambulance Services										
Name		Phone		Type of Aircraft & Capability						
PHI		911		EC-135 Single Patient						
Star Flight		911		EC145 2 Patient						
5. Hospitals										
Name Complete Address		GPS Datum – WGS 84		Travel Time Air Gnd		Phone		Helipad Yes No		Level of Care Facility
Brook Army Medical Center 3551 Roger Brook Dr Ft Sam Houston San Antonio, TX		Lat:		1.5 Hrs	3.5 Hrs	210-916-7500		<input checked="" type="checkbox"/>	<input type="checkbox"/>	Burn Center Critical Care
		Long:								
		VHF:								
Brackenridge Hospital 601 E. 15 th St. Austin TX		Lat: N30 16.47		15 Min	45 Min	208-799-5799		<input checked="" type="checkbox"/>	<input type="checkbox"/>	Critical Trauma
		Long: W97 43.92								
		VHF:								
Smithville-Seton Hospital 800 Hwy 71 East Smithville, TX		Lat: N30 0.265			10 Min	512-237-5736 512-237-3214		<input checked="" type="checkbox"/>	<input type="checkbox"/>	Level 4 Trauma
		Long: W97 8.149								
		VHF:								
St. David's South 901 W. Ben White Austin, TX		Lat: N30 13.509		15 Min	40 Min	(ER) 512-334-8520 512-447-2211		<input checked="" type="checkbox"/>	<input type="checkbox"/>	Cardiac Level 3 Trauma
		Long: W97 46.511								
		VHF:								
6. Division Branch Group Area Location Capability										

Hidden Pines ICP- Medical 125 Keller Rd Smithville, TX DAY SHIFT	EMS Responders & Capability:	Shanna Ellis MEDL
	Equipment Available on Scene:	Basic First Aid/Trauma Kit/Preventative (Sunscreen, lip balm, etc)
	Medical Emergency Contact:	Cell Phone: 318-229-6515 Radio: Hidden Pines ICP (Day Shift)

MEDICAL PLAN

Swing Shift	EMS Responders & Capability:	LOCAL 911 Response after 2000.	
	Equipment Available on Scene:		
	Medical Emergency Channel:	Bastrop Co. Sheriff's Office Dispatch	
	ETA for Ambulance to Scene:	15 Mins.	
	Air:		
	Ground:		
	Approved Helispot:		
	Lat:		
Long:			
A/B/Z DP 1 Day Shift	EMS Responders & Capability:	Frank Abel, EMTP	
	Equipment Available on Scene:	Trauma Kit/backboard/O2/Rescu-Sleeve	
	Medical Emergency Channel:	Command	
	ETA for Ambulance to Scene:		
	Air:		
	Ground:	15 min	
	Approved Helispot:		
	Lat: N		
Long: W			
C/Y DP 4 Day Shift	EMS Responders & Capability:	Marc Burnette, EMP	
	Equipment Available on Scene:	Trauma Kit	
	Medical Emergency Channel:	Command	
	ETA for Ambulance to Scene:		
	Air:		
	Ground:	15 min	
	Approved Helispot:		
	Lat: N		
Long: W			
7. Prepared By (Medical Unit Leader)	8. Date/Time	9. Reviewed By (Safety Officer)	10. Date/Time
/s/Shanna F. Ellis MEDL	10/21/2015	/s/Larry Grubbs SOF1 (T)	10/21/2015

MEDICAL PLAN

Medical Incident Report

FOR ALL MEDICAL EMERGENCIES: IDENTIFY ON SCENE INCIDENT COMMANDER BY NAME AND POSITION AND ANNOUNCE "MEDICAL EMERGENCY" TO INITIATE RESPONSE FROM IMT COMMUNICATIONS/DISPATCH.

Use items one through nine to communicate situation to communications/dispatch.

1. CONTACT COMMUNICATIONS/DISPATCH

Ex: "Communications, Div. Alpha. Stand-by for Priority Medical Incident Report." (If life threatening request designated frequency be cleared for emergency traffic.)

2. INCIDENT STATUS: Provide incident summary and command structure.

Nature of Injury/Illness		<i>Describe the injury (Ex: Broken leg with bleeding)</i>
Incident Name		<i>Geographic Name + "Medical" (Ex: Trout Meadow Medical)</i>
Incident Commander		<i>Name of IC</i>
Patient Care		<i>Name of Care Provider (Ex: EMT Smith)</i>

3. INITIAL PATIENT ASSESSMENT: Complete this section for each patient. This is only a brief, initial assessment. Provide additional patient info after completing this 9 Line Report.

Number of Patients:	Male / Female	Age:27T	Weight:27T
Conscious? <input type="checkbox"/> YES <input type="checkbox"/> NO = MEDEVAC!			
Breathing? <input type="checkbox"/> YES <input type="checkbox"/> NO = MEDEVAC!			
Mechanism of Injury: <i>What caused the injury?</i>			
Lat/Long (Datum WGS84) <i>Ex: N 40° 42.45' x W 123° 03.24'</i>			

4. SEVERITY OF EMERGENCY, TRANSPORT PRIORITY

SEVERITY	TRANSPORT PRIORITY
<input type="checkbox"/> URGENT-RED Life threatening injury or illness. <i>Ex: Unconscious, difficulty breathing, bleeding severely, 2° – 3° burns more than 4 palm sizes, heat stroke, disoriented.</i>	Ambulance or MEDEVAC helicopter. Evacuation need is IMMEDIATE.
<input type="checkbox"/> PRIORITY-YELLOW Serious Injury or illness. <i>Ex: Significant trauma, not able to walk, 2° – 3° burns not more than 1-2 palm sizes.</i>	Ambulance or consider air transport if at remote location. Evacuation may be DELAYED.
<input type="checkbox"/> ROUTINE-GREEN Not a life threatening injury or illness. <i>Ex: Sprains, strains, minor heat-related illness.</i>	Non-Emergency. Evacuation considered Routine of Convenience.

5. TRANSPORT PLAN:

Air Transport: (Agency Aircraft Preferred)

<input type="checkbox"/> Helispot	<input type="checkbox"/> Short-haul/Hoist	<input type="checkbox"/> Life Flight	<input type="checkbox"/> Other
Ground Transport: 27T			
<input type="checkbox"/> Self-Extract	<input type="checkbox"/> Carry-Out	<input type="checkbox"/> Ambulance	<input type="checkbox"/> Other

6. ADDITIONAL RESOURCE/EQUIPMENT NEEDS:

<input type="checkbox"/> Paramedic/EMT(s)	<input type="checkbox"/> Crew(s)	<input type="checkbox"/> SKED/Backboard/C-Collar
<input type="checkbox"/> Burn Sheet(s)	<input type="checkbox"/> Oxygen	<input type="checkbox"/> Trauma Bag
<input type="checkbox"/> Medication(s)	<input type="checkbox"/> IV/Fluid(s)	<input type="checkbox"/> Cardiac Monitor/AED
<input type="checkbox"/> Other (i.e. splints, rope rescue, wheeled litter)		

7. COMMUNICATIONS:

Function	Channel Name/Number	Receive (Rx)	Tone/NAC *	Transmit (Tx)	Tone/NAC *
<i>Ex: Command</i>	<i>Forest Rpt, Ch. 2</i>	<i>168.3250</i>	<i>110.9</i>	<i>171.4325</i>	<i>110.9</i>
COMMAND					
AIR-TO-GRND					
TACTICAL					

*(NAC for digital radio system)

8. EVACUATION LOCATION:

Lat/Long (Datum WGS84) <i>EX: N 40 42.45' x W 123 03.24'</i>	
Patient's ETA to Evacuation Location:	
Helispot/Extraction Size and Hazards:	

9. CONTINGENCY:

Considerations: *If primary options fail, what actions can be implemented in conjunction with primary evacuation method? Be thinking ahead...*

REMEMBER: **Confirm ETA's of resources ordered
Act according to your level of training
Be Alert. Keep Calm. Think Clearly. Act Decisively.**

MEDICAL PLAN

ASSIGNMENT-SPECIFIC MEDICAL EMERGENCY ACTION PLAN

Pre-Planning for today's assignment – See Page 2 IRPG

What are the likely hazards that could cause injuries? What kind of severe injuries?		
Who is the likely in-charge DIVS or overhead for an emergency in your assigned area today? (i.e. "Division Zulu")		
Who are the Medical personnel assigned to your part of the incident? What are their capabilities?		
Other Emergency Responders: fire dept, crash rescue, ambulance?		
Communications: Command channel, Air to Ground, Medical helicopters, local rescue/medical?		
Transportation methods available	Ground vehicle, drop point, coordinates, travel route?	
	Aircraft I.D, helispot names, coordinates? Hoist capable, internal transport	
	Other available methods - contingency	
Most likely workforce for evacuation		

Response checklist

Who takes charge?

In the event of a medical emergency the On-Scene Point of Contact (POC) will provide the following information to Communications:

1. Declare the nature of the emergency.
 - a. Medical injury/ illness? If injury/ illness is it life threatening? (Medical Transport vs. Medical Emergency)
2. If Life Threatening, request that the designated frequency be cleared for emergency traffic
3. Identify the On-Scene POC by Last name (i.e. Smith)
4. Identify nature of incident, number injured, patient assessment(s) and location (geographic and GPS coordinates)
5. Identify On-Scene medical personnel by name (i.e. Jones)
6. Identify preferred method of patient transport
7. Request any additional resources and/ or equipment needed
8. Document all information received and transmitted on the radio or phone
9. Identify any changes in the On-Scene POC or medical personnel as they occur

Response sequence:

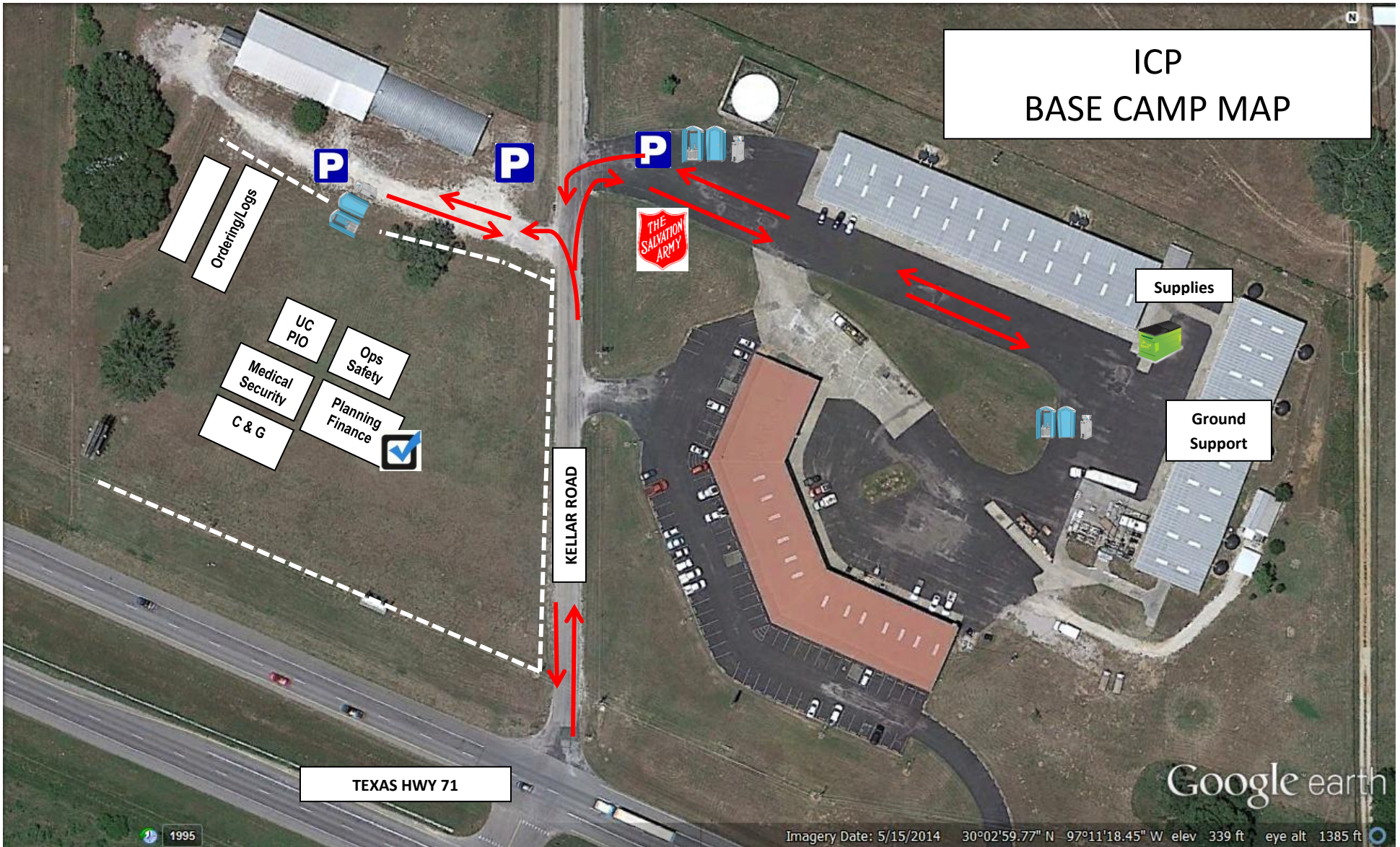
Once any injury/ illness has occurred:

- Report all injuries/ illnesses to Division Supervisors (or designees) who will assume command and notify any assigned DIVS Medical Personnel and DIVS Safety Officer.
- Division Supervisors will notify Communications with Emergency Medical Procedures information listed in Section above. **DO NOT USE THE INJURED PERSON'S NAME ON THE RADIO.**
 - DAY SHIFT:
 - Communications (Hidden Pines ICP) will notify MEDL and Incident Safety Officer to assist with coordination of further medical care and mode of transportation.
 - SWING SHIFT:
 - Communications (Bastrop Co. Sheriff's Office) will notify 911 or Sheriff's Department for response and transport.
- On-Scene medical personnel will stabilize patient.
- Ambulance and/or air resources will be coordinated through Communications, MEDL, and SOF1.

In ICP- Contact Medical Unit with patient complaint/condition and location.

- Notify Medical Unit of any injury/ illnesses being transported to Medical Unit prior to transport.
- **Request that FFTR/Engine Crews or Single Resources let DIVS know if they have any EMTs or Paramedics and if they have equipment with them.**

ICP BASE CAMP MAP



CHECK IN



PORT-A-JON
HAND WASH



DUMPSTER



PARKING



FENCING



TRAFFIC
FLOW

<h1>UNIT LOG</h1>		1. Incident Name Hidden Pines	2. Date Prepared	3. Time Prepared
		4. Unit Name/Designators	5. Unit Leader (Name and Position)	
7. Personnel Roster Assigned				
	Name	ICS Position	Home Base	
8. Activity Log				
		Major Events		
9. Prepared By:				