

Incident Action Plan

Hidden Pines Fire

TX-TXS-016001

Monday

October 19, 2015 0700 Hrs

to

Tuesday

October 20, 2015 0700 Hrs



Maps and IAP

INCIDENT OBJECTIVES (ICS 202)

1. Incident Name:	2. Operational Period: DAY/NIGHT	
HIDDEN PINES	Date/Time From: 10/19/2015 0700 MON	Date/Time To: 10/20/2015 0700 TUE
3. Objective(s): Ensure public and firefighter safety throughout the incident. Continue suppression operations to limit structure loss and negative impact to environmentally sensitive areas. Continue to establish control lines. Convey damage assessment to Bastrop County for analysis of loss. Maintain open communication with public and media.		
4. Operational Period Command Emphasis: 		
General Situational Awareness: Beware of fatigue.		
5. Site Safety Plan Required? Yes <input type="checkbox"/> No <input checked="" type="checkbox"/> Approved Site Safety Plan(s) Located at:		
6. Incident Action Plan (the items checked below are included in this Incident Action Plan):		
<input checked="" type="checkbox"/> ICS 202 <input checked="" type="checkbox"/> ICS 203 <input checked="" type="checkbox"/> ICS 204 <input checked="" type="checkbox"/> ICS 205 <input type="checkbox"/> ICS 205A <input checked="" type="checkbox"/> ICS 206	<input type="checkbox"/> ICS 207 <input type="checkbox"/> ICS 208 <input checked="" type="checkbox"/> ICS 220 <input checked="" type="checkbox"/> Map/Chart <input checked="" type="checkbox"/> Weather Forecast/Tides/Currents	Other Attachments: <input checked="" type="checkbox"/> SAFETY MESSAGE _____ <input checked="" type="checkbox"/> WEATHER FORECAST _____ <input checked="" type="checkbox"/> FIRE BEHAVIOR FORECAST _____ <input type="checkbox"/> _____
7. Prepared by: JAMES R. ANDERSON Position/Title: PLANNING SECTION CHIEF	Signature: _____	
8. Approved by Incident Commander:	Name: MARK B. MORALES	Signature: _____
ICS 202	IAP Page	Date/Time: 10/18/2015 1800

ORGANIZATION ASSIGNMENT LIST (ICS 203)

1. Incident Name:		2. Operational Period: DAY/NIGHT	
HIDDEN PINES		Date/Time From: 10/19/2015 0700	MON Date/Time To: 10/20/2015 0700 TUE
3. Incident Commander(s) and Command Staff:		7. Operations Section:	
AGENCY ADMINISTRATOR	COUNTY JUDGE PAUL PAPE	OPS SECTION CHIEF	BARRY GARTEN / GEORGE CUSTER LEA WOFFORD / DANNY BRYANT
IC/UC	MARK MORALES	OPS TRAINEES	GRAY / SNOW / DAVE MARTIN
UNIFIED COMMAND	BC EMC - MIKE FISHER	Branch	FIRE
UNIFIED COMMAND	BCSO SHERIFF - TERRY PICKERING	DIVISON A / B / Z	WOMACK / CASE / DEVRIENDT(T)
UNIFIED COMMAND	STATE DDC - CAPT. SCHULZE	DIVISON C	DAN MARTIN / JOHN KAUFFMAN(T)
SAFETY OFFICER	PAT SHERIDAN / BRIAN BEISEL	DIVISION Y	KERRY CLARK
INFORMATION OFFICER	JONES / KRASKO / GRUBBS(T)	NIGHT DIVISION	
LIAISON OFFICER	KIETH JENKINS / FRED WETZEL	STAGING	
4. Agency/Organization Representative(s):		Branch	LE
Agency/Organization	Name	BRANCH DIRECTOR	A.J. MOLINARI
SMITHVILLE CITY MANAGER	ROBERT TRAMBLE	EVAC & SECURITY	V. WELTHER
AQUA WATER	DAVID FLEMING	TRAFFIC	J. ALTUM
BLUEBONNET ELECTRIC	GARY GUTIERREZ	DAMAGE ASSESSMENTS	C. DEZARN
CENTER POINT ENERGY	JIM GAMBINO / LANCE ZANDONATTI	Branch	CITIZEN SERVICES
LCRA TS	SUP. JASON JECMENEK	BRANCH DIRECTOR	BLAKE CLAMPFFER
MD ANDERSON	SHARON DENT	DISPLACED FAMILY SERVICES	DANIEL GERACI
ENERGY TRANSFER	KENNY MORGAN	SHELTERS	ROBERT TRAMBLE
TPWD READS	MCCLANAHAN / SARTOR	REGISTRATION / NEEDS / DONATIONS	SHEILA LOWE
SMITHVILLE SCHOOLS	ZACH HARRIS	VOLUNTEER COORDINATION	TINA SEIDEL
5. Planning Section:		Branch	UTILITIES
CHIEF	RED ANDERSON	BRANCH DIRECTOR	SUSANNA THORNE
RESOURCES UNIT	JANAN HAY SHARP / STEVE WELLS(T)	7b. Air Operations Branch:	
SITUATION UNIT	JASON HATTERSLEY	AIR OPS BRANCH DIRECTOR	TERRY HARRIS
DEMOBILIZATION UNIT	MICHAEL J WILLIAMS (T)	AIR SUPPORT SUPERVISOR	MICHAEL MOWERY
FIRE BEHAVIOR	ANDY BAKER	8. Finance/Administration Section:	
TRAINING SPECIALIST	DIANE BOLT	CHIEF	KAREN PATTERSON / TERRI OTT
GIS SPECIALIST	ALLEN SMITH / CHRIS EVANS	TIME UNIT	ANNA BRYANT (T)
COMPUTER SPEC.	DANIEL LEDUC / SCOTT GREST	PROCUREMENT UNIT	CHRISTOPHER FORD (T)
METEOROLOGIST	GREG MURDOCH	COMPENSATION UNIT	DONNA ROGERS
6. Logistics Section:		COST UNIT	SUSAN DEIMEL
CHIEF	SCHIFFER / WALL / LISOWSKY		
SUPPLY	BILL KITCHINGS / JANE ARTEAGA		
FACILITIES	BROSTROM / HOLSCLAW		
GROUND SUPPORT	SOUTHARDS / SMITH / CHAPIN		
COMMUNICATIONS	CLAUDE GILLELAND		
MEDICAL	SHANNA ELLIS		
SECURITY	DAY HEATHER GREEN NIGHT MIKE TIPTON		
ORDERING MANAGER	TERRI BERGER / MARINA FOLTZ(T)		
EQUIPMENT	JOHNSON / HENDERSON / SMITH		
9. Prepared By:	Name: MICHAEL J WILLIAMS	Position/Title: RESL	Signature:
ICS 203	IAP Page	Date/Time: 10/18/2015 1700	



INCIDENT Weather Forecast



FORECAST NO: 2

NAME OF INCIDENT: Hidden Pines

PREDICTION FOR: DAY SHIFT

UNIT: State of Texas, Buescher SP

SHIFT DATE: Monday Oct 19, 2015

SIGNED: **Greg Murdoch**
Incident Meteorologist

TIME AND DATE

FORECAST ISSUED: 1800 Sunday Oct 18, 2015

WEATHER DISCUSSION: Surface high pressure will decrease its presence some today, but it will still be unseasonably dry with min RH near 20%. As a result the wind will turn SE while remaining 10 mph or less. Temperatures will be more seasonal as the general warm-dry-unstable conditions persist.

WEATHER FORECAST: MONDAY

WEATHER: Mostly Sunny.

MAX TEMPERATURE: 83-85F

MIN RH: 19-21%

CWR: 0%.

20 FT WINDS: SE 6-10 mph.

HAINES INDEX (low level): Briefly a 5 in the afternoon.

LAL: 1

STABILITY/INVERSION: Morning Inversion at 500 ft AGL until 10 AM...mixing to 6200 ft AGL.

...Elevated fire weather concerns today due to dry conditions...

WEATHER FORECAST: MONDAY NIGHT

WEATHER: Partly cloudy.

MIN TEMPERATURE: 56-61F

MAX RH: 90%

CWR: 0%.

20 FT WINDS: SE 5 mph.

HAINES INDEX: 3...Very Low

LAL: 1

EXTENDED FORECAST: TUESDAY-THURSDAY :

Tuesday/Tuesday night: Partly cloudy. Max Temp/Min RH: mid 80s /35%. Min Temp/Max RH: 65/90-95%. SE 6-10 mph.

Wednesday/Wednesday night: Mostly cloudy. 50% chance of storms. Max Temp/Min RH: mid 80s /42-47%. Min Temp/Max RH: mid 60s /95%. SE 8-12 mph.

Thursday/Thursday night:

Cloudy with a 60-70% chance of showers and storms. Max Temp/Min RH 80/50-60%. Min Temp/Max RH: mid 60s/100% SE 6-11 mph.

Sunrise: 732 am

Sunset: 655 pm

FIRE BEHAVIOR FORECAST

FORECAST NUMBER: 2

TYPE OF FIRE: Wildfire

FIRE NAME: Hidden Pines

OPERATIONAL PERIOD: October 19th, 2015

DATE ISSUED: October 18th, 2015

TIME ISSUED: 1800

UNIT: TX-TXS

SIGNED: */s/ Andy Baker* FBAN

INPUTS

WEATHER SUMMARY: (For full forecast refer to the Fire Weather Forecast)

****Another Very Dry Day****

Today: Mostly Sunny. Max Temp: 84 degrees Min RH: 21%
Afternoon 20 ft. Winds: SE 6-10 mph

Tonight: Partly Cloudy. Low Temp: 61 degrees Max RH: 90% Winds: Light and variable from the SE

Tuesday: Partly Cloudy. Max Temp: 85 degrees Min RH: 35% Winds: SE at 6-10 mph

OUTPUTS

FIRE BEHAVIOR

GENERAL:

- Relative Humidity is on the rebound from yesterday but will still bottom out at near critical levels (~20%) in the afternoon with continued potential for significant fire growth from any new starts/spots.
- Short grass (Fuel Model 1): ROS – up to 70 ch/hr, FL - 2 to 4 ft
- Pine/Oak woodland with shrub component (Fuel Model 7): ROS – up to 28 ch/hr, FL - 3 to 6 ft
- 2011 Bastrop Complex Burn Scar: ROS – up to 20 ch/hr, FL – 2 to 4 ft
- Probability of Ignition is 75%
- Fuels/Fire Danger Observations from the Bastrop RAWs:
 - ✓ 100 hr Dead Fuel Moisture – 12% (critically dry)
 - ✓ 1000 hr Dead Fuel Moisture – 13% (critically dry)
 - ✓ Herbaceous Live Fuel Moisture – 67% (extremely dry)
 - ✓ Shrub Live Fuel Moisture – 79% (extremely dry)
 - ✓ Woody (Oak) Live Fuel Moisture – 75% (extremely dry)
 - ✓ Energy Release Component – 57 (extremely dry)
 - ✓ Keetch-Byrum Drought Index – 752 (extremely dry)

SPECIFIC:

All Divisions: Expect continued smoldering of snags, stumps and heavy downed fuels in the morning with the potential for active surface fire, torching and spotting from remaining unburned/partially burned pockets of fuel in the afternoon. Continue to pay attention to any residual heat near the fire perimeter as fuels will continue to be very receptive to ignition.

Division Bravo: Winds will shift to a SE flow putting more pressure on the remaining hotspots by the afternoon.

AIR OPERATIONS:

- Weak inversion in the early morning should have minimal impacts
- Afternoon mixing heights around 6200 feet AGL. Transport winds SE at 10 mph

SAFETY

- Fireline personnel will need to stay vigilant regarding hazard tree ID given the numerous fire weakened trees in and around the fire perimeter
- Given critically low moisture in both the dead and live fuels and the dry atmosphere, a fire can quickly transition from smoldering to active surface fire to torching and spotting during the peak burning period

Division/Group Assignment List (ICS 204 WF)

1. Incident Name:			3.			
HIDDEN PINES			Branch:		Division/Group: A/B/Z	
2. Operational Period: DAY/NIGHT						
Date/Time From: 10/19/2015 0700 MON		Date/Time To: 10/20/2015 0700 TUE				
4. Operations Personnel						
OPERATIONS CHIEF (FIELD)		GARTEN/BRYANT/GRAY(T)/SNOW(T)		OPERATIONS CHIEF (PLANNING)		
				CUSTER/WOFFORD/MARTIN(T)		
DIVISION/GROUP SUPERVISOR		WOMACK/CASE/DEVRIENDT(T)		SAFETY OFFICER		
				CUPP, IVAN		
5. Resources Assigned this Period						
Strike Team / Task Force / Resource Designator		LWD	Leader	Number Persons	Drop Off PT./Time	Pick Up PT./Time
TFLD			MOORE (T)	1		
HC2I C-1 CREW - T2IA - MESCALERO		10/30	CORIZ, ALDON	21		
TIFMAS ST5			L. HAMBY	22		
TIFMAS ST1			SHIPP	20		
ENG4 401			LOOP	2		
ENG6 9662			C.CURLES	2		
ENG6 9663			POWELL	2		
ENG6 606			HOLDSTOCK	2		
TIFMAS WT HELOTES			HUDSON	2		
TIFMAS WT 25			TUNDEL	2		
D5 9690			NOAK	1		
D5 4190			GRAUKE	2		
TPWD UTV 801			BRIDWELL	2		
TPWD UTV 777			BAKER	2		
TPWD UTV 750			LEWIS	2		
BASTROP FD UTV			TOWERS	2		
TFS UTV				2		
EMTP O-36 ABEL, FRANK		10/30		1		
6. Control Operations/Work Assignments:						
Mop-up threats to the line. Secure and mop-up around interior structures. Identify hazard trees around structures and roads.						
8. Division/Group Communication Summary						
Function	Channel	RX Frequency N/W	RX Tone/NAC	TX Frequency N/W	TX Tone/NAC	Mode
COMMAND	1	161.8500		157.2500	156.7	
TACTICAL	4	151.4750		151.4750	114.8	
AIR TO GROUND	6	154.2800		154.2800	156.7	
TACTICAL	3	159.4350		159.4350	114.8	
9. Prepared By (Resource Unit Leader)			Approved By (Planning Section Chief)		Date	Time
J H SHARP			RED ANDERSON		10/18/2015	1800

Division/Group Assignment List (ICS 204 WF)

1. Incident Name:				3.				
HIDDEN PINES				Branch:		Division/Group:		
2. Operational Period: DAY/NIGHT								
Date/Time From: 10/19/2015 0700 MON		Date/Time To: 10/20/2015 0700 TUE		A/B/Z				
4. Operations Personnel								
OPERATIONS CHIEF (FIELD)		GARTEN/BRYANT/GRAY(T)/SNOW(T)		OPERATIONS CHIEF (PLANNING)		CUSTER/WOFFORD/MARTIN(T)		
DIVISION/GROUP SUPERVISOR		WOMACK/CASE/DEVRIENDT(T)		SAFETY OFFICER		CUPP, IVAN		
6. Control Operations/Work Assignments:								
7. Special Instructions:								
<p>For power/electrical issues contact Bluebonnet Dispatch 512-332-7990 (24hr) Minimize ground disturbance for protection of resources (T&E, Arch) Identify and keep heavy equipment clear of septic and water meters For mechanical issues call Ground Support (601-405-5711)</p>								
8. Division/Group Communication Summary								
Function		Channel	RX Frequency N/W		RX Tone/NAC	TX Frequency N/W	TX Tone/NAC	Mode
COMMAND		1	161.8500			157.2500	156.7	
TACTICAL		4	151.4750			151.4750	114.8	
AIR TO GROUND		6	154.2800			154.2800	156.7	
TACTICAL		3	159.4350			159.4350	114.8	
9. Prepared By (Resource Unit Leader)				Approved By (Planning Section Chief)			Date	Time
J H SHARP				RED ANDERSON			10/18/2015	1800

Division/Group Assignment List (ICS 204 WF)

1. Incident Name:			3.			
HIDDEN PINES			Branch:		Division/Group: C	
2. Operational Period: DAY/NIGHT						
Date/Time From: 10/19/2015 0700 MON		Date/Time To: 10/20/2015 0700 TUE				
4. Operations Personnel						
OPERATIONS CHIEF (FIELD)		GARTEN/BRYANT/GRAY(T)/SNOW(T)		OPERATIONS CHIEF (PLANNING)		
				CUSTER/WOFFORD/MARTIN(T)		
DIVISION/GROUP SUPERVISOR		MARTIN, DANIEL KAUFFMAN, JOHN (T)		SAFETY OFFICER		
				WORLEY		
5. Resources Assigned this Period						
Strike Team / Task Force / Resource Designator		LWD	Leader	Number Persons	Drop Off PT./Time	Pick Up PT./Time
TFLD			HOLBROOK	1		
STLD			PORTIE			
HC21 C-2 CREW - T2IA - NMZUA - ZUNI AGENCY #1		10/30		20		
TIFMAS ST 3			BISBEE	24		
ENG6 SMITHVILLE B-2						
ENG6 TFS			WILLIAMS	3		
D6 9692			WILLINGHAM	2		
WT TIFMAS #71			YOUNG	2		
SMITHVILLE UTV						
EMTP				1		
6. Control Operations/Work Assignments:						
Patrol and mop-up threats to the line.						
7. Special Instructions:						
For power/electrical issues contact Bluebonnet Dispatch 512-332-7990 (24hr) Minimize ground disturbance for protection of resources (T&E, Arch) Identify and keep heavy equipment clear of septic and water meters For mechanical issues call Ground Support (601-405-5711)						
8. Division/Group Communication Summary						
Function	Channel	RX Frequency N/W	RX Tone/NAC	TX Frequency N/W	TX Tone/NAC	Mode
COMMAND	1	161.8500		157.2500	156.7	
AIR TO GROUND	6	154.2800		154.2800	156.7	
TACTICAL	5	159.3150		159.3150	114.8	
9. Prepared By (Resource Unit Leader)			Approved By (Planning Section Chief)		Date	Time
J H SHARP			RED ANDERSON		10/18/2015	1800

Division/Group Assignment List (ICS 204 WF)

1. Incident Name:			3.			
HIDDEN PINES			Branch:		Division/Group: Y	
2. Operational Period: DAY/NIGHT						
Date/Time From: 10/19/2015 0700 MON		Date/Time To: 10/20/2015 0700 TUE				
4. Operations Personnel						
OPERATIONS CHIEF (FIELD)		GARTEN/BRYANT/GRAY(T)/SNOW(T) WOFFORD		OPERATIONS CHIEF (PLANNING)		
DIVISION/GROUP SUPERVISOR		CLARK, KERRY		SAFETY OFFICER		
				CUSTER/WOFFORD/MARTIN(T) RITTENHOUSE, JAMIE		
5. Resources Assigned this Period						
Strike Team / Task Force / Resource Designator		LWD	Leader	Number Persons	Drop Off PT./Time	Pick Up PT./Time
TIFMAS ST 4			BRINKOETTER	21		
SAW TEAM			PANNELL	9		
6. Control Operations/Work Assignments:						
Assess handline from gas pipeline to tie in with dozer line. Patrol and mop-up threats to the line.						
7. Special Instructions:						
For power/electrical issues contact Bluebonnet Dispatch 512-332-7990 (24hr) Minimize ground disturbance for protection of resources (T&E, Arch) Identify and keep heavy equipment clear of septic and water meters For mechanical issues call Ground Support (601-405-5711)						
8. Division/Group Communication Summary						
Function	Channel	RX Frequency N/W	RX Tone/NAC	TX Frequency N/W	TX Tone/NAC	Mode
COMMAND	1	161.8500		157.2500	156.7	
AIR TO GROUND	6	154.2800		154.2800	156.7	
TACTICAL	7	154.2650		154.2650	156.7	
9. Prepared By (Resource Unit Leader)			Approved By (Planning Section Chief)		Date	Time
J H SHARP			RED ANDERSON		10/18/2015	1800

Division/Group Assignment List (ICS 204 WF)

1. Incident Name:			3.			
HIDDEN PINES			Branch:		Division/Group: NIGHT SHIFT	
2. Operational Period: DAY/NIGHT						
Date/Time From: 10/19/2015 0700 MON		Date/Time To: 10/20/2015 0700 TUE				
4. Operations Personnel						
OPERATIONS CHIEF				BRANCH DIRECTOR		
DIVISION/GROUP SUPERVISOR						
5. Resources Assigned this Period						
Strike Team / Task Force / Resource Designator		LWD	Leader	Number Persons	Drop Off PT./Time	Pick Up PT./Time
TIFMAS ST2			F. HAMBY	19		
6. Control Operations/Work Assignments:						
<p>Monitor, patrol and mop-up around structures in all divisions. Identify and keep heavy equipment clear of septic and water meters.</p>						
7. Special Instructions:						
<p>Check in with communications through Command channel hourly.</p>						
8. Division/Group Communication Summary						
Function	Channel	RX Frequency N/W	RX Tone/NAC	TX Frequency N/W	TX Tone/NAC	Mode
COMMAND	1	161.8500		157.2500	156.7	
9. Prepared By (Resource Unit Leader)			Approved By (Planning Section Chief)		Date	Time
J H SHARP			RED ANDERSON		10/18/2015	1800

Division/Group Assignment List (ICS 204 WF)

1. Incident Name:			3.			
HIDDEN PINES			Branch:		Division/Group: STAGING	
2. Operational Period: DAY/NIGHT						
Date/Time From: 10/19/2015 0700 MON		Date/Time To: 10/20/2015 0700 TUE				
4. Operations Personnel						
OPERATIONS CHIEF (FIELD)		GARTEN, BRYANT, GRAY(T), SNOW (T)		OPERATIONS CHIEF (PLANNING)		
				CUSTER, WOFFORD, MARTIN (T)		
DIVISION/GROUP SUPERVISOR				AIR ATTACK SUPERVISOR		
5. Resources Assigned this Period						
Strike Team / Task Force / Resource Designator		LWD	Leader	Number Persons	Drop Off PT./Time	Pick Up PT./Time
STEQ O-10 RUSHING, WAYNE		10/29		1		
TPL2 E-8 ACS28288						
TPL2 E-9 ACS31031		10/29		2		
TPL2 E-10 ACS31032						
PU E-14 ACS27329		10/29		1		
TFS JD550			RASMUSSEN	1		
6. Control Operations/Work Assignments:						
Be prepared for assignment.						
7. Special Instructions:						
8. Division/Group Communication Summary						
Function	Channel	RX Frequency N/W	RX Tone/NAC	TX Frequency N/W	TX Tone/NAC	Mode
COMMAND						
TACTICAL						
LOGISTICS						
AIR TO GROUND						
9. Prepared By (Resource Unit Leader)			Approved By (Planning Section Chief)		Date	Time
J H SHARP			RED ANDERSON		10/18/2015	1800

Division/Group Assignment List (ICS 204 WF)

1. Incident Name:			3.			
HIDDEN PINES			Branch:		Division/Group:	
2. Operational Period: DAY/NIGHT			LE		LE	
Date/Time From: 10/19/2015 0700 MON	Date/Time To: 10/20/2015 0700 TUE					
4. Operations Personnel						
OPERATIONS CHIEF (FIELD)		GARTEN, BRYANT, GRAY(T), SNOW(T)		OPERATIONS CHIEF (PLANNING)		CUSTER/WOFFORD/MARTIN(T)
DIVISION/GROUP SUPERVISOR				AIR ATTACK SUPERVISOR		
5. Resources Assigned this Period						
Strike Team / Task Force / Resource Designator		LWD	Leader	Number Persons	Drop Off PT./Time	Pick Up PT./Time
TRAFFIC/ROAD CLOSURES			J. ALTUM	8		
DAMAGE ASSESSMENT			C. DEZARN	5		
EVAC/SECURITY			V. WELTHER	8		
6. Control Operations/Work Assignments:						
7. Special Instructions:						
8. Division/Group Communication Summary						
Function	Channel	RX Frequency N/W	RX Tone/NAC	TX Frequency N/W	TX Tone/NAC	Mode
COMMAND						
TACTICAL						
LOGISTICS						
AIR TO GROUND						
9. Prepared By (Resource Unit Leader)			Approved By (Planning Section Chief)		Date	Time

Division/Group Assignment List (ICS 204 WF)

1. Incident Name:			3.			
HIDDEN PINES			Branch: CITIZN SERV	Division/Group: DISPLACED FAMILY SERVICE		
2. Operational Period: DAY/NIGHT						
Date/Time From: 10/19/2015 0700	MON	Date/Time To: 10/20/2015 0700	TUE			
4. Operations Personnel						
BRANCH DIRECTOR	BLAKE CLAMPFFER		DIVISION/GROUP SUPERVISOR	DANIEL GERACI		
DEPUTY BRANCH DIRECTOR	ADENA LEWIS		PHONE NUMBER	512-825-8211		
5. Resources Assigned this Period						
Strike Team / Task Force / Resource Designator	LWD	Leader	Number Persons	Drop Off PT./Time	Pick Up PT./Time	
6. Control Operations/Work Assignments:						
Register displaced families and report to BCLTRT. Identify & communicate services available to community. Work with BCLTRT and other disaster relief organizations approved by BCLTRT to facilitate effective DFS center.						
7. Special Instructions:						
Report volunteer hours and cost to Bastrop County Finance daily by 8:30 AM.						
8. Division/Group Communication Summary						
Function	Channel	RX Frequency N/W	RX Tone/NAC	TX Frequency N/W	TX Tone/NAC	Mode
COMMAND						
TACTICAL						
LOGISTICS						
AIR TO GROUND						
9. Prepared By (Resource Unit Leader)		Approved By (Planning Section Chief)		Date	Time	
MICHAEL J WILLIAMS		RED ANDERSON		10/18/2015	2100	

Division/Group Assignment List (ICS 204 WF)

1. Incident Name:			3.			
HIDDEN PINES			Branch:		Division/Group:	
2. Operational Period: DAY/NIGHT			CITZN SERV		REGEST / NEEDS / DONATIONS	
Date/Time From: 10/19/2015 0700	MON	Date/Time To: 10/20/2015 0700				
4. Operations Personnel						
BRANCH DIRECTOR	BLAKE CLAMPFFER		DIVISION/GROUP SUPERVISOR	SHEILA LOWE		
DEPUTY BRANCH DIRECTOR	ADENA LEWIS		PHONE NUMBER	512-297-4732		
5. Resources Assigned this Period						
Strike Team / Task Force / Resource Designator	LWD	Leader	Number Persons	Drop Off PT./Time	Pick Up PT./Time	
6. Control Operations/Work Assignments:						
<p>Register & Develop records for all survivors. Identify survivor unmet needs. Identify donation needs & develop donation plan. Collect and appropriately distribute donations of monetary amounts & physical goods.</p>						
7. Special Instructions:						
Report volunteer hours and cost to Bastrop County Finance daily by 8:30 AM.						
8. Division/Group Communication Summary						
Function	Channel	RX Frequency N/W	RX Tone/NAC	TX Frequency N/W	TX Tone/NAC	Mode
COMMAND						
TACTICAL						
LOGISTICS						
AIR TO GROUND						
9. Prepared By (Resource Unit Leader)			Approved By (Planning Section Chief)		Date	Time
MICHAEL J WILLIAMS			RED ANDERSON		10/18/2015	2100

Division/Group Assignment List (ICS 204 WF)

1. Incident Name:			3.			
HIDDEN PINES			Branch: CITZN SERV		Division/Group: SHELTERS	
2. Operational Period: DAY/NIGHT						
Date/Time From: 10/19/2015 0700		Date/Time To: 10/20/2015 0700				
MON		TUE				
4. Operations Personnel						
BRANCH DIRECTOR		BLAKE CLAMPFFER		DIVISION/GROUP SUPERVISOR		ROBERT TRAMBLE
DEPUTY BRANCH DIRECTOR		ADENA LEWIS		PHONE NUMBER		512-423-9390
5. Resources Assigned this Period						
Strike Team / Task Force / Resource Designator		LWD	Leader	Number Persons	Drop Off PT./Time	Pick Up PT./Time
6. Control Operations/Work Assignments:						
Register & Develop records of shelter residents. Develop a plan for transferring shelter operations to transitional housing. Track all shelter operations costs, census, and other data as requested. Notify DSHS of need for shelter surveillance.						
7. Special Instructions:						
Report volunteer hours and cost to Bastrop County Finance daily by 8:30 AM.						
8. Division/Group Communication Summary						
Function	Channel	RX Frequency N/W	RX Tone/NAC	TX Frequency N/W	TX Tone/NAC	Mode
COMMAND						
TACTICAL						
LOGISTICS						
AIR TO GROUND						
9. Prepared By (Resource Unit Leader)			Approved By (Planning Section Chief)		Date	Time
MICHAEL J WILLIAMS			RED ANDERSON		10/18/2015	2100

Division/Group Assignment List (ICS 204 WF)

1. Incident Name:			3.			
HIDDEN PINES			Branch: CITZN SERV	Division/Group: VOLUNTEER COORDINATOR		
2. Operational Period: DAY/NIGHT						
Date/Time From: 10/19/2015 0700	MON	Date/Time To: 10/20/2015 0700	TUE			
4. Operations Personnel						
BRANCH DIRECTOR	BLAKE CLAMPPFER		DIVISION/GROUP SUPERVISOR	TINA SEIDEL		
DEPUTY BRANCH DIRECTOR	ADENA LEWIS		PHONE NUMBER	512-581-2554		
5. Resources Assigned this Period						
Strike Team / Task Force / Resource Designator	LWD	Leader	Number Persons	Drop Off PT./Time	Pick Up PT./Time	
6. Control Operations/Work Assignments:						
<p>Register volunteers. Identify skills and abilities of volunteers. Assign appropriate volunteers to assist other groups in branch. Develop and implement system to track all volunteer hours.</p>						
7. Special Instructions:						
<p>Report volunteer hours and cost to Bastrop County Finance daily by 8:30 AM.</p>						
8. Division/Group Communication Summary						
Function	Channel	RX Frequency N/W	RX Tone/NAC	TX Frequency N/W	TX Tone/NAC	Mode
COMMAND						
TACTICAL						
LOGISTICS						
AIR TO GROUND						
9. Prepared By (Resource Unit Leader)			Approved By (Planning Section Chief)		Date	Time
MICHAEL J WILLIAMS			RED ANDERSON		10/18/2015	2100

AIR OPERATIONS SUMMARY		PREPARED BY: Terry Harris				PREPARED DATE/TIME: 1800 10/18/15							
1. INCIDENT NAME: Hidden Pines		2. OPERATIONAL PERIOD DATE: 10/19/15		START TIME: 0800		END TIME: 1900		SUNRISE: Giddings 0732 SUNSET: 1853 Austin 0735 1857					
3. REMARKS (Safety Notes, Hazards, Air Operations Special Equipment, etc.) -PILOTS WATCH OUT FOR BIRDS, BE ALERT TO HIGH WINDS AND TURBULANCE, MAINTAIN CLEAR COMMUNICATIONS. -NOTE THAT SOME TOWERS ARE NOT MARKED ON SECTIONALS, TOWERS COULD BE UP TO 2500 FEET. -ALL FIREFIGHTING AIRCRAFT NEED TO SQUAWK 1255. FLY WITH LIGHTS ON. -HEADS UP WHEN PERFORMING WATER DROPS AROUND CREWS ON THE GROUND -CREWS STAY AWAY FROM WATER DROPS INCLUDING APPROACH AND DEPARTURES -AIRCRAFT WILL BE ORDERED AND DISPATCHED UTILIZING LATITUDE AND LONGITUDE AS DEGREES DECIMAL MINUTES REQUEST FOR AIRCRAFT WILL BE MADE BY DIVISIONS OR HIGHER. REQUEST FOR AIRTANKERS MUST BE APPROVED BY OPERATIONS						4. MEDEVAC A/C: REFERENCE MEDICAL PLAN		5. TFR: FDC 5/7683; 5 Mile Radius, 3500 ft. MSL; From 30 04' 39" X 97 08' 56" 1. IMMEDIATE NOTIFICATION OF INTRUSIONS ARE TO BE PLACED WITH THE FAA. REMARKS : ADDITIONAL AIRCRAFT (AIR TANKERS HELICOPTERS, ATGS ETC) MAY BE AVAILABLE ON REQUEST					
6. PERSONNEL		Phone		7. FREQUENCIES		AM		FM		8. FIXED WING SEATS Based @ Giddings (GYB)			
AOBD: Terry Harris		936-366-4239		National Flight Following TX & RX				168.650		T-894 N194BM (AT802) Al Driesbach (SEMG) 805-703-0649			
ASGS: Mike Mowery		870-615-0287						T- 110.9		T-895 N895BM (AT802)			
ATGS: Chris Schenck N7901Q (C-401B)		936-238-0490		Secondary Flight Following (TXCALL2D) TX & RX				155.370 T - 156.7		T-866 N8510M (AT802) Royce Logan (SEMG) 606-545-8446			
				Air to Ground Primary TX & RX				159.300 T - 114.8		T-809 N6131K (AT802)			
				Air to Ground Secondary TX & RX				151.385 T- 114.8					
				Air to Ground (VFire26) (may tone RX 156.7 if having interference) TX & RX				TX 154.3025 T - 156.7					
				Air to Air Primary TX & RX		122.925							
				Air to Air Secondary TX & RX		135.675							
				COMMAND RPT SEE ICS 205		Rx: Tx:							
				DECK FREQ:									
				TOLC:									
9. HELICOPTERS (Use Additional Sheets As Necessary)													
FAA N#	TY	MAKE/MODEL	BASE	AVAIL	START	Liason	FAA N#	TY	MAKE/MODEL	BASE	AVAIL	START	Liason
	1	Blackhawk UH60 Shiner 41	AUS	1000		Fred Luecke 979-542-7941		3	Lakota NG 65	AUS	1000		Fred Luecke 979-542-7941
	1	Blackhawk UH60 Shiner 22	AUS	1000		Fred Luecke 979-542-7941		3	Lakota NG 66	AUS	1000		Fred Luecke 979-542-7941

HEALTH AND SAFETY MESSAGE

If you see something, say something!

INCIDENT: Hidden Pines Fire

DATE: October 19, 2015

TIME: Day/Night Shift

Major Hazards and Risks:

Snags Driving Unburned Fuel Between You And The Fire

Snag Safety:

Size up snag hazards in work area.

Never become complacent.

Always look up.

Get weather reports

Scout out parking, sleeping, work areas, and safety zones.

Advice co-workers of known hazards.

Face your hazard and take appropriate action.

Examine work area for other hazards.

Take extra caution around heavy equipment.

You are ultimately responsible for your own safety.

Driving – This is the number one activity that exposes us to risk on a daily basis. Even if we are only driving from our lodging and daily worksite. Minimize distractions, drive defensively, slow down, use spotters, use lights and seatbelts when the vehicle is moving, and expect the unexpected to happen.



11.UNBURNED FUEL BETWEEN YOU AND
THE FIRE

Common Denominators of Fire Behavior on Tragedy Fires:

1. On relatively small fires or deceptively quiet areas of large fires.
2. In relatively light fuels, such as grass, herbs, and light brush.
3. With unexpected shifts in wind direction or wind speed.
4. When fire responds to topographic conditions and runs uphill.

Brian Beisel SOF1, Patrick Sheridan SOF1, Larry Grubbs
SOF1(t)

INCIDENT RADIO COMMUNICATIONS PLAN (ICS 205)

1. Incident Name:	2. Date/Time Prepared:	3. Operational Period: DAY/NIGHT	
HIDDEN PINES	Date: 10/18/2015 Time: 1300	Date/Time From: 10/19/2015 0700 MON	Date/Time To: 10/20/2015 0700 TUE

4. Basic Radio Channel Use:

Zone Group	Ch #	Function	Channel Name/Trunked Radio System Talkgroup	Assignment	RX Freq	RX Tone/NAC	TX Freq	TX Tone/NAC	Mode (A,D, or M)	Remarks
	1	COMMAND	CMD1	COMMAND	161.8500		157.2500	156.7		DPS COMMAND POST
	2	TACTICAL	TAC2	DIV Z	159.2850		159.2850			COMPACT
	3	TACTICAL	TAC3	DIV A	159.4350		159.4350	114.8		TFS TAC7/A
	4	TACTICAL	TAC4	DIVB	151.4750		151.4750	114.8		TFS TAC 8/B
	5	TACTICAL	TAC5	DIV C	159.3150		159.3150	114.8		TFS TAC 9/C
	6	AIR TO GROUND	AIR TO G	AIR TO GROUND	154.2800		154.2800	156.7		VFIRE21
	7	TACTICAL	TAC7	DIV Y	154.2650		154.2650	156.7		VFIRE22
	8	TACTICAL	TAC8	UNASSIGNED	169.9000		169.9000			
	9	TACTICAL	TAC9	UNASSIGNED	168.0500		168.0500	136.5		
	10	TACTICAL	TAC10	UNASSIGNED	168.2000		168.2000	136.5		
	11	TACTICAL	TAC11	UNASSIGNED	168.6000		168.6000			
	12	TACTICAL	TAC12	UNASSIGNED	166.5625		166.5625			
	16	AIR GUARD	AIR GUARD	AIR GUARD	168.6250		168.6250	110.9		EMERGENCY USE

5. Special Instructions:

6. Prepared By (Communications Unit Leader)	Name: CLAUDE GILLELAND	Signature:
ICS 205	IAP Page	Date/Time: 10/18/2015 1300

1. Incident/Project Name					2. Operational Period					
Hidden Pines					10/19/15 0700 to 10/20/15 0700					
3. Ambulance Services										
Name		Complete Address			Phone & EMS Frequency		Advanced Life Support (ALS) Yes No			
Acadian EMS		4100 Ed Bluestein Blvd. Suite 100, Austin, TX 70721			911 512-929-1653		X		27T	
Fayette County EMS		750 E. Camp St., LaGrange, TX			911 979-968-8991		X			
4. Air Ambulance Services										
Name		Phone		Type of Aircraft & Capability						
PHI		911		EC-135 Single Patient						
Star Flight		911		EC145 2 Patient						
5. Hospitals										
Name Complete Address		GPS Datum – WGS 84		Travel Time Air Gnd		Phone		Helipad Yes No		Level of Care Facility
Brook Army Medical Center 3551 Roger Brook Dr Ft Sam Houston San Antonio, TX		Lat:		1.5 Hrs 3.5 Hrs		210-916-7500		<input checked="" type="checkbox"/> <input type="checkbox"/>		Burn Center Critical Care
		Long:								
		VHF:								
Brackenridge Hospital 601 E. 15 th St. Austin TX		Lat: N30 16.47		15 Min 45 Min		208-799-5799		<input checked="" type="checkbox"/> <input type="checkbox"/>		Critical Trauma
		Long: W97 43.92								
		VHF:								
Smithville-Seton Hospital 800 Hwy 71 East Smithville, TX		Lat: N30 0.265		10 Min		512-237-5736 512-237-3214		<input checked="" type="checkbox"/> <input type="checkbox"/>		Level 4 Trauma
		Long: W97 8.149								
		VHF:								
St. David's South 901 W. Ben White Austin, TX		Lat: N30 13.509		15 Min 40 Min		(ER) 512-334-8520 512-447-2211		<input checked="" type="checkbox"/> <input type="checkbox"/>		Cardiac Level 3 Trauma
		Long: W97 46.511								
		VHF:								
6. Division Branch Group Area Location Capability										

Clearwater Complex ICP-Medical 125 Keller Rd Smithville, TX DAY SHIFT	EMS Responders & Capability:	Shanna Ellis MEDL Bastrop First Responders Unit
	Equipment Available on Scene:	Basic First Aid/Trauma Kit/Preventative (Sunscreen, lip balm, etc)
	Medical Emergency Contact:	Cell Phone: 318-229-6515 Radio: DPS Command Post Communications

Swing Shift and Night Shift	EMS Responders & Capability:	LOCAL 911 Response after 2000.		
	Equipment Available on Scene:			
	Medical Emergency Channel:	Command		
	ETA for Ambulance to Scene:	15 Mins.		
	Air:			
	Ground:			
	Approved Helispot:			
	Lat: Long:			
A/B/Z DP 1 Day Shift	EMS Responders & Capability:	Frank Abel, EMTP		
	Equipment Available on Scene:	Trauma Kit/backboard/O2/Rescu-Sleeve		
	Medical Emergency Channel:	Command		
	ETA for Ambulance to Scene:			
	Air:			
	Ground:	15 min		
	Approved Helispot:			
	Lat: N Long: W			
C/Y DP 3 Day Shift	EMS Responders & Capability:			
	Equipment Available on Scene:			
	Medical Emergency Channel:			
	ETA for Ambulance to Scene:			
	Air:			
	Ground:	15 min		
	Approved Helispot:			
	Lat: N Long: W			
7. Prepared By (Medical Unit Leader)		8. Date/Time	9. Reviewed By (Safety Officer)	10. Date/Time
/s/Shanna F. Ellis MEDL		10/18/2015	/s/Larry Grubbs SOF1 (T)	10/18/2015

Medical Incident Report

FOR ALL MEDICAL EMERGENCIES: IDENTIFY ON SCENE INCIDENT COMMANDER BY NAME AND POSITION AND ANNOUNCE "MEDICAL EMERGENCY" TO INITIATE RESPONSE FROM IMT COMMUNICATIONS/DISPATCH.

Use items one through nine to communicate situation to communications/dispatch.

1. CONTACT COMMUNICATIONS/DISPATCH

Ex: "Communications, Div. Alpha. Stand-by for Priority Medical Incident Report." (If life threatening request designated frequency be cleared for emergency traffic.)

2. INCIDENT STATUS: Provide incident summary and command structure.

Nature of Injury/Illness		Describe the injury <i>(Ex: Broken leg with bleeding)</i>
Incident Name		Geographic Name + "Medical" <i>(Ex: Trout Meadow Medical)</i>
Incident Commander		Name of IC
Patient Care		Name of Care Provider <i>(Ex: EMT Smith)</i>

3. INITIAL PATIENT ASSESSMENT: Complete this section for each patient. This is only a brief, initial assessment. Provide additional patient info after completing this 9 Line Report.

Number of Patients:	Male / Female	Age:27T	Weight:27T
Conscious? <input type="checkbox"/> YES <input type="checkbox"/> NO = MEDEVAC!			
Breathing? <input type="checkbox"/> YES <input type="checkbox"/> NO = MEDEVAC!			
Mechanism of Injury: <i>What caused the injury?</i>			
Lat/Long (Datum WGS84) <i>Ex: N 40° 42.45' x W 123° 03.24'</i>			

4. SEVERITY OF EMERGENCY, TRANSPORT PRIORITY

SEVERITY	TRANSPORT PRIORITY
<input type="checkbox"/> URGENT-RED Life threatening injury or illness. <i>Ex: Unconscious, difficulty breathing, bleeding severely, 2° – 3° burns more than 4 palm sizes, heat stroke, disoriented.</i>	Ambulance or MEDEVAC helicopter. Evacuation need is IMMEDIATE.
<input type="checkbox"/> PRIORITY-YELLOW Serious Injury or illness. <i>Ex: Significant trauma, not able to walk, 2° – 3° burns not more than 1-2 palm sizes.</i>	Ambulance or consider air transport if at remote location. Evacuation may be DELAYED.
<input type="checkbox"/> ROUTINE-GREEN Not a life threatening injury or illness. <i>Ex: Sprains, strains, minor heat-related illness.</i>	Non-Emergency. Evacuation considered Routine of Convenience.

5. TRANSPORT PLAN:

Air Transport: (Agency Aircraft Preferred)

<input type="checkbox"/> Helispot	<input type="checkbox"/> Short-haul/Hoist	<input type="checkbox"/> Life Flight	<input type="checkbox"/> Other
-----------------------------------	---	--------------------------------------	--------------------------------

Ground Transport: 27T

<input type="checkbox"/> Self-Extract	<input type="checkbox"/> Carry-Out	<input type="checkbox"/> Ambulance	<input type="checkbox"/> Other
---------------------------------------	------------------------------------	------------------------------------	--------------------------------

6. ADDITIONAL RESOURCE/EQUIPMENT NEEDS:

<input type="checkbox"/> Paramedic/EMT(s)	<input type="checkbox"/> Crew(s)	<input type="checkbox"/> SKED/Backboard/C-Collar
<input type="checkbox"/> Burn Sheet(s)	<input type="checkbox"/> Oxygen	<input type="checkbox"/> Trauma Bag
<input type="checkbox"/> Medication(s)	<input type="checkbox"/> IV/Fluid(s)	<input type="checkbox"/> Cardiac Monitor/AED
<input type="checkbox"/> Other (i.e. splints, rope rescue, wheeled litter)		

7. COMMUNICATIONS:

Function	Channel Name/Number	Receive (Rx)	Tone/NAC *	Transmit (Tx)	Tone/NAC *
<i>Ex: Command</i>	<i>Forest Rpt, Ch. 2</i>	<i>168.3250</i>	<i>110.9</i>	<i>171.4325</i>	<i>110.9</i>
COMMAND					
AIR-TO-GRND					
TACTICAL					

*(NAC for digital radio system)

8. EVACUATION LOCATION:

Lat/Long (Datum WGS84) <i>EX: N 40 42.45' x W 123 03.24'</i>	
Patient's ETA to Evacuation Location:	
Helispot/Extraction Size and Hazards:	

9. CONTINGENCY:

Considerations: *If primary options fail, what actions can be implemented in conjunction with primary evacuation method? Be thinking ahead...*

REMEMBER: Confirm ETA's of resources ordered
Act according to your level of training
Be Alert. Keep Calm. Think Clearly. Act Decisively.

ASSIGNMENT-SPECIFIC MEDICAL EMERGENCY ACTION PLAN

Pre-Planning for today's assignment – See Page 2 IRPG

What are the likely hazards that could cause injuries? What kind of severe injuries?		
Who is the likely in-charge DIVS or overhead for an emergency in your assigned area today? (i.e. "Division Zulu")		
Who are the Medical personnel assigned to your part of the incident? What are their capabilities?		
Other Emergency Responders: fire dept, crash rescue, ambulance?		
Communications: Command channel, Air to Ground, Medical helicopters, local rescue/medical?		
Transportation methods available	Ground vehicle, drop point, coordinates, travel route?	
	Aircraft I.D, helispot names, coordinates? Hoist capable, internal transport	
	Other available methods - contingency	
Most likely workforce for evacuation		

Response checklist

Who takes charge?

In the event of a medical emergency the On-Scene Point of Contact (POC) will provide the following information to Communications:

1. Declare the nature of the emergency.
 - a. Medical injury/ illness? If injury/ illness is it life threatening? (Medical Transport vs. Medical Emergency)
2. If Life Threatening, request that the designated frequency be cleared for emergency traffic
3. Identify the On-Scene POC by Last name (i.e. Smith)
4. Identify nature of incident, number injured, patient assessment(s) and location (geographic and GPS coordinates)
5. Identify On-Scene medical personnel by name (i.e. Jones)
6. Identify preferred method of patient transport
7. Request any additional resources and/ or equipment needed
8. Document all information received and transmitted on the radio or phone
9. Identify any changes in the On-Scene POC or medical personnel as they occur

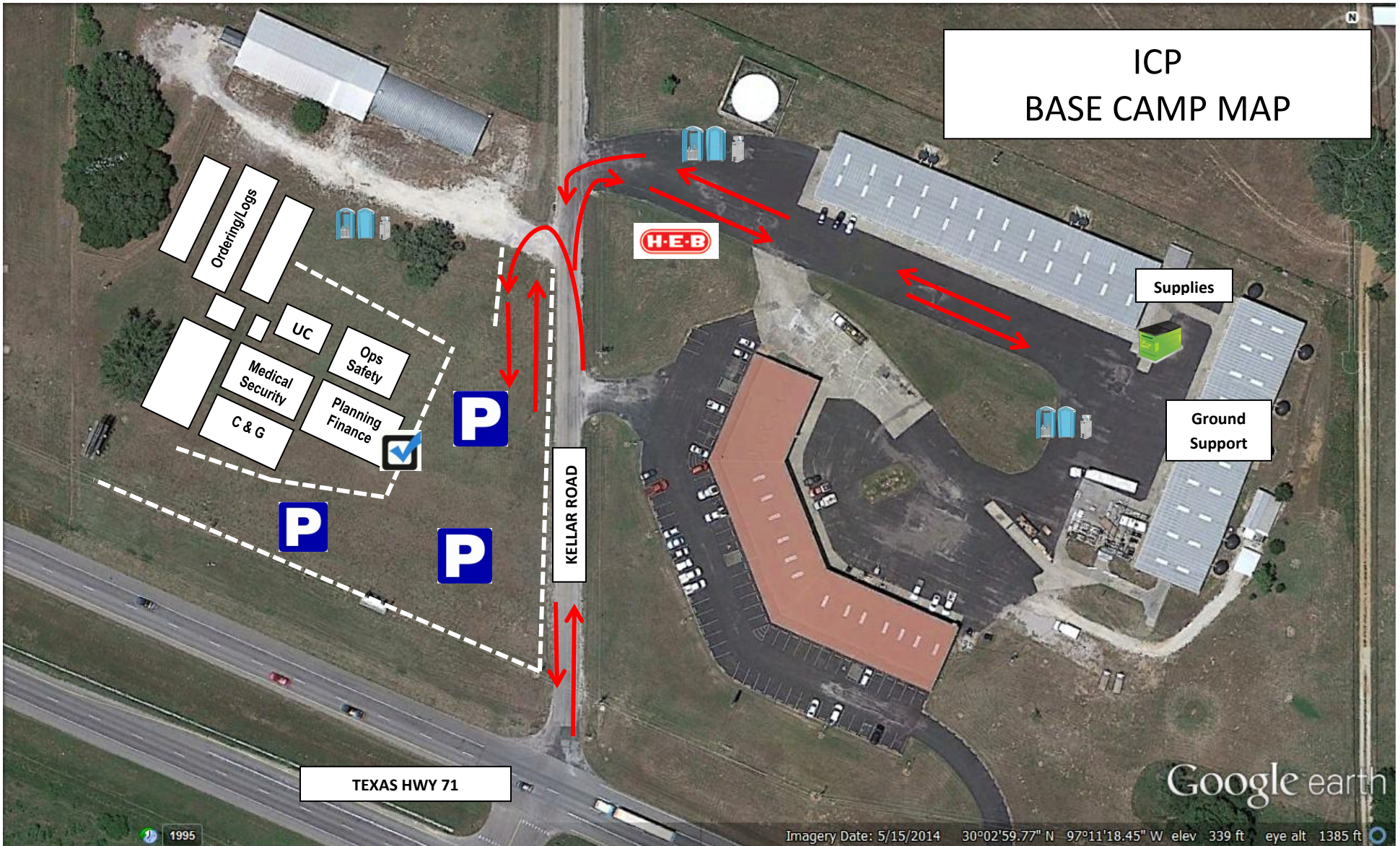
Response sequence:

Once any injury/ illness has occurred:

- Report all injuries/ illnesses to Division Supervisors (or designees) who will assume command and notify any assigned DIVS Medical Personnel and DIVS Safety Officer.
- Division Supervisors will notify Communications with Emergency Medical Procedures information listed in Section above. **DO NOT USE THE INJURED PERSON'S NAME ON THE RADIO.**
 - DAY SHIFT:
 - Communications will notify MEDL and Incident Safety Officer to assist with coordination of further medical care and mode of transportation.
 - NIGHT SHIFT:
 - Communications will notify 911 or Sheriff's Department for response and transport.
- On-Scene medical personnel will stabilize patient.
- Ambulance and/or air resources will be coordinated through Communications, MEDL, and SOF1.

In ICP- Contact Medical Unit with patient complaint/condition and location.

- Notify Medical Unit of any injury/ illnesses being transported to Medical Unit prior to transport.
- **Request that FFTR/Engine Crews or Single Resources let DIVS know if they have any EMTs or Paramedics and if they have equipment with them.**



CHECK IN



PORT-A-JON
HAND WASH



DUMPSTER



PARKING



FENCING



TRAFFIC
FLOW

Planned Order of Restoration

- Zone 1 - Restored Oct. 15
- Zone 2 - Restored Oct. 17
- Zone 3 - Restored Oct. 18
- Zone 4 - Assessment Complete - Restoration Underway



Blocks of addresses in Zone 4

- 100 - 161 Abbey Lane
- 328 - 544 Alum Creek Road
- 612 - 880 Cottle town Rd
- 358 - 638 Gotier Trace
- 112 - 165 Lonesome Dove Road
- 735 - 1026 Park Road 1C
- 104 - 139 Pines Park Drive

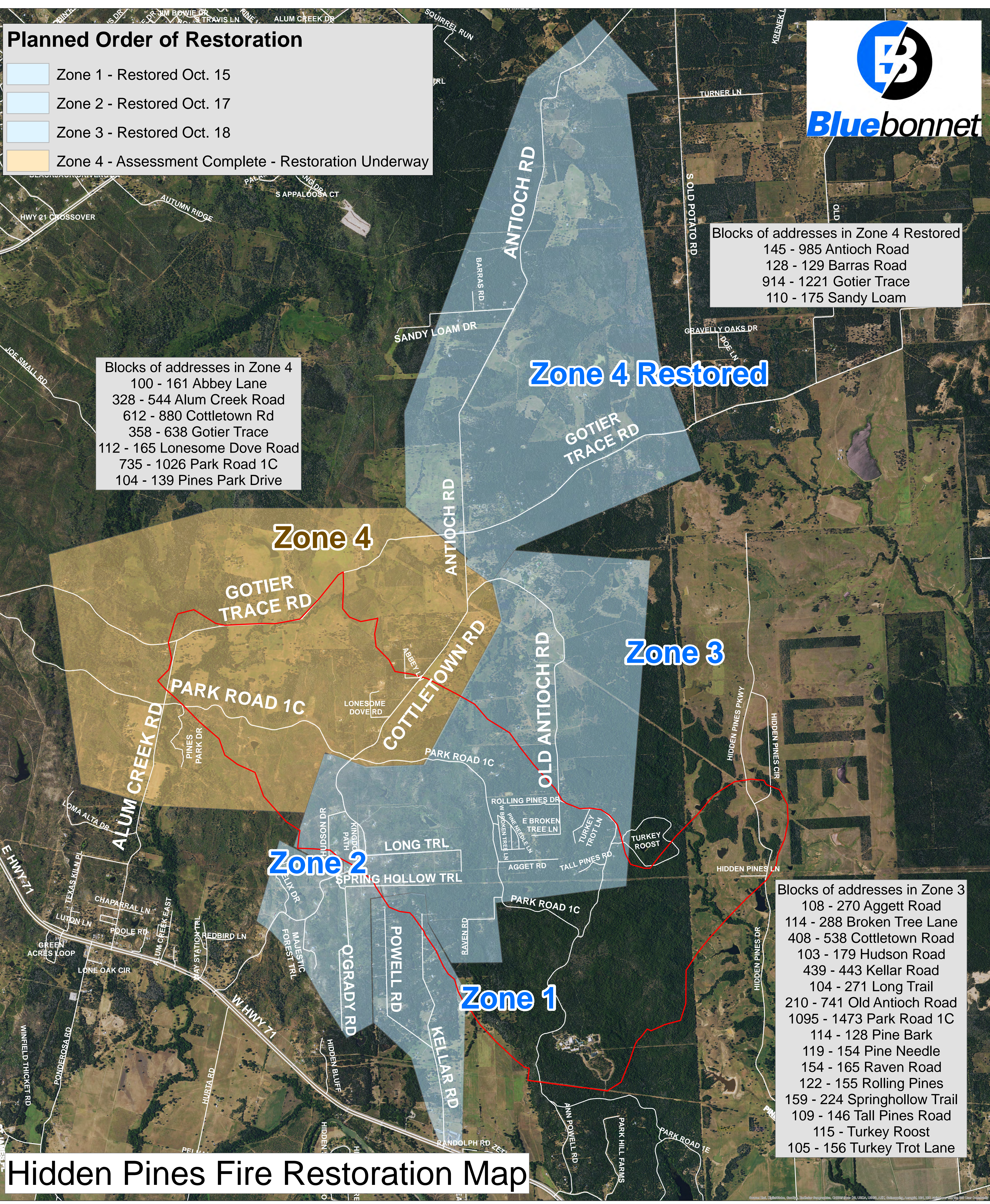
Blocks of addresses in Zone 4 Restored

- 145 - 985 Antioch Road
- 128 - 129 Barras Road
- 914 - 1221 Gotier Trace
- 110 - 175 Sandy Loam

Blocks of addresses in Zone 3

- 108 - 270 Aggett Road
- 114 - 288 Broken Tree Lane
- 408 - 538 Cottle town Road
- 103 - 179 Hudson Road
- 439 - 443 Kellar Road
- 104 - 271 Long Trail
- 210 - 741 Old Antioch Road
- 1095 - 1473 Park Road 1C
- 114 - 128 Pine Bark
- 119 - 154 Pine Needle
- 154 - 165 Raven Road
- 122 - 155 Rolling Pines
- 159 - 224 Springhollow Trail
- 109 - 146 Tall Pines Road
- 115 - Turkey Roost
- 105 - 156 Turkey Trot Lane

Hidden Pines Fire Restoration Map



UNIT LOG	1. Incident Name Hidden Pines	2. Date Prepared	3. Time Prepared
4. Unit Name/Designators	5. Unit Leader (Name and Position)		6. Operational Period
7. Personnel Roster Assigned			
Name	ICS Position	Home Base	
8. Activity Log			
Time	Major Events		
9. Prepared By:			