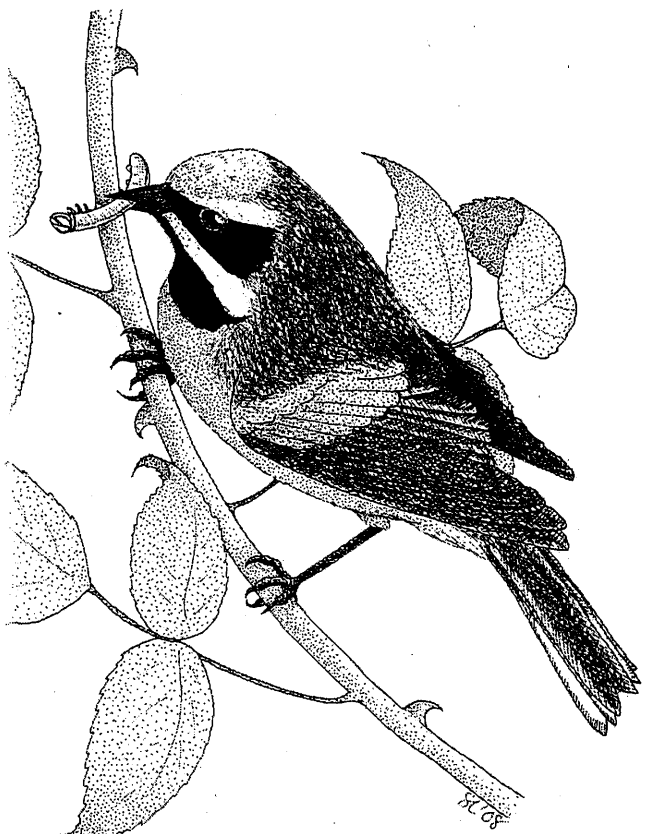


**Tuesday- November 15, 2016**

**INCIDENT ACTION PLAN**

**Day Shift 0730 to 1930**

**Night Shift 1800 to 0600**



**ROCK MOUNTAIN FIRE**

**Fire # GA-CHF-160079**

**USFS: P8KTE7 (08/03)**

**Pacific Northwest**

**National Incident Management**

**Team 3**



**Tuesday- November 15, 2016**

<b>INCIDENT OBJECTIVES</b>	1. Incident Name	2. Date	3. Time
	<b>Rock Mountain Fire</b>	<b>11/14/2016</b>	<b>1515</b>

4. Operational Period  
**November 15, 2016 Day (0730-1930) and Night (1800-1600)**

5. General Control Objectives for the Incident (Include alternatives)  
Incident Objectives:

- Implement Operational actions that incorporate an acceptable level of responder risk and probability of success aligned with protection of identified values at risk
- Implement suppression actions to minimize fire impacts to private lands and private residences
- Coordinate suppression actions with cooperators responsible for structure protection in Rabun & Towns Counties
- Coordinate evacuation of threatened residences with fire officials from Rabun and Towns Counties.
- Take actions to maintain and strengthen relationships with partner agencies, cooperators, community groups and members
- Provide for Initial Attack within designated Initial Attack boundaries. Support request for assistance to local units as feasible.

Specific Objectives:

Rock Mountain Fire

- Prevent loss and/or damage to private lands on the southern, western and northern flanks of the fire through combination of direct attack, use of natural barriers in combination with burnout operations, and point protection around threatened structures.
- Develop suppression actions on the northeast flank that consider wilderness/roadless values and threatened/sensitive species of concern.
- Burrell Fire
- Prevent further damage from fire activity by maintaining fire within current perimeter.

6. Weather Forecast for Period

**See attached weather forecast.**

7. General Safety Message

**See attached safety message.**

8.	Attachments (mark if attached)			
X	Organization List - ICS 203	Incident Map	X	Medical - ICS 206
X	Div. Assignment Lists - ICS 204	Safety Message	X	Human Resource Message
X	Communications Plan - ICS 205	Traffic Plan	X	Information
X	Medical Plan - ICS 206	Weather Forecast	X	Unit Log
X	Air Operation Summary - ICS 220	Fire Behavior	X	Medical Incident Report (9 Line)

9. Prepared by (Planning Section Chief) **M. Burneth**



10. Approved by (Incident Commander) **N. Livingston**



**ORGANIZATION ASSIGNMENT LIST**

1. Incident Name		Rock Mountain Fire
2. Date	01/14/2016	3. Time 2000
4. Operational Period 11/15/16 Day (0730-1930) Night (1800-0600)		

5. Incident Commander and Staff	
Incident Commander	Noel Livingston
Deputy Incident Commander	Keith Satterfield
Liaison Officer	Brian Watson
Safety Officer	Tim Sampson
Information Officer	Stan Hinatsu
Human Resources	Mary Rourke

6. Agency Representative	
USFS - Chattahoochee-Oconee NF - Agency Administrator	Betty Jewett, Forest Supervisor
USFS - Agency Representative	Jason Engle, Acting Dist. Ranger

7. Planning Section	
Chief	Mike Burnett
Deputy Chief	
Resource Unit Leader	Christy Merritt
Demob Unit Leader	John Petrick
Situation Unit Leader	Syndy Zerr
Documentation Unit Leader	
GIS Specialist	Cob Bailey, Shane Clark (I)
Fire Behavior Analyst	Chris Johnson
Incident Meteorologist	

8. Logistics Section	
Chief	Cindy Wedekind
Deputy Chief	Kelly Jennings
Facilities Unit Leader	Phil Pilet
Supply Unit Leader	Steve Strissguth
Ground Support Unit Leader	Jeff Allred
Medical Unit Leader	Steve Otoupalik
Food Unit Leader	Scott Worontzoff
Security Manager	
Communication Unit Leader	Russell McDonald
Ordering Manager	
Computer Tech. Specialist	Heather Wiskow, Char Jumper

9. Operations Section	
Operations Chief – Field	Alex Robertson
Operations Chief – Planning	Randy Johnson
Operations Chief – Strategic	Dean Vendrasco, Hans Redinger
a. Branch I	
Branch Director	Brent Meisinger
Division "A"	Unstaffed
Division "D"	Unstaffed
Division "F"	Cameron Wirtfey
Division "G"	Unstaffed
Division "H"	James Osborne

b. Branch II	
Branch Director	Hans Redinger, Nathan Goodrich (I)
Division "W"	James Wetstaeed
Division "R"	Justin Ray
Division "V"	Russ Hamilton

c. Burrell Fire	
Operations Chief	Alex Robertson
d. Night Shift	
Operations Chief	Alex Robertson

e. Air Ops Branch	
Air Operations Director	Clark Teke
Air Tactical Group Sup.	James Price
Air Support Group Sup.	Adam Kahler

10. Finance Section	
Chief	LuAnn Grover
Deputy Chief	Gary Dillavou
Time Unit Leader	Melisa Swain
Cost Unit Leader	Kay High
Procurement Unit Leader	Leslie Solberg
Comp. Claims Unit Leader	Helen Pass
Contract Project Inspector (CPI)	Oлга Casarez
Prepared by (Resource Unit Leader)	
Christy Merritt RESL	



# INCIDENT Weather Forecast



FORECAST NO: 1

NAME OF INCIDENT: Rock Mountain

PREDICTION FOR: DAY/NIGHT SHIFTS

UNIT: GA-CHF

SHIFT DATE: Tuesday, November 15, 2016

SIGNED: *Phil Manuel*

TIME AND DATE

Phil Manuel

FORECAST ISSUED: 2000 Monday, November 14, 2016

Incident Meteorologist

WEATHER DISCUSSION:

... No Change In Weather Pattern ...

High pressure will result in another stagnant day with little or no air movement. Weak northwest winds will result in smoke drift toward the east-southeast impacting Highway 15/23, including Dillard and Clayton. Smoke from fires farther to the northwest will compound the smoke. Poor visibility is likely. Temperatures today and tonight will be very similar to the last few burn periods with highs in the 60s and lows near 40. Some of the mountain valleys near Tate City may dip into the 30s resulting in patchy frost.

WEATHER FORECAST FOR: (TUESDAY)

WEATHER: Smoke. Visibility 0.5 to 1.5 miles on the east side of the fire. 1 to 3 miles on the west side.

TEMPERATURES: High in the lower 60s. (unchanged)

HUMIDITY: Min RH 30-35% (unchanged).

20 FT WINDS:  
VALLEYS/Slopes – Upslope/Upvalley 1 to 3 mph.  
RIDGES/Saddles – Northwest 3 to 6 mph.

TRANSPORT WIND: Northwest 5 to 10 mph. CWR: 0%

WEATHER FORECAST FOR: (TUESDAY NIGHT)

WEATHER: Smoke. Visibility 0.5 to 1.5 miles.

TEMPERATURES: Low 37 to 42.

HUMIDITY: Max recovery 80%.

20 FT WINDS: Down-slope/down-valley 1 to 3 mph. Ridges Northwest 2 to 5 mph.

TRANSPORT WIND: Northwest 5 mph.

CWR: 0% Smoke Dispersion: Very Poor.

EXTENDED FORECAST: (WEDNESDAY)

No change. Light winds with high concentrations of smoke favoring smoky conditions on the east side of the incident. Highs in the lower 60s. Min RH 30 to 35%. Ridge-top winds northwest winds 3 to 6 mph.

Sunrise 7:08 AM EST

Sunset 5:29 PM EST

## FIRE BEHAVIOR FORECAST

FORECAST NUMBER: 2	TYPE OF FIRE: Wildfire
FIRE NAME: Rock Mountain Fire	OPERATIONAL PERIOD: Tuesday, November 15, 2016 Day and Night Shifts
DATE ISSUED: Monday, November 14, 2016	TIME ISSUED: 2000
UNIT: Chattahoochee-Oconee National Forest	SIGNED: <i>Chris Johnson</i> – Fire Behavior Analyst (FBAN)

### INPUTS

**WEATHER SUMMARY:** \*\*\* See *Fire Weather Forecast for Details* \*\*\* Winds will be light with temps and relative humidity (RH) values similar to yesterday. Smoke continues to inhibit visibility, especially east and south of fire. Day Shift: High Temps: Lower 60's Low RH: 32% Ridge winds 3-6 mph NW. Up slope/Up valley 1-3 mph Night Shift: Temps 37-42 night, RH recovery 80%

**FIRE DANGER:** Exceptional to extreme drought with record ERCs (above 99<sup>th</sup> percentile). The Ketch-Byram Drought Index (KBDI) values are in the 725-750 range (on a scale of 0-800) indicating much rainfall is needed to return the soil moisture (and fuels) to more seasonal conditions.

**FUELS:** The primary carrier of fire is hardwood leaf litter on the surface with some shrub components (FM9/TU3). Leaf off is 40% to 70% complete, increasing with elevation. New leaf off will add surface fuel load over burned areas and fireline and increase re-burn or slop-over potential. 1000-hour fuels are at 13%, well below average. Log bridges over creeks will burn and allow potential for fire to cross. Ensure culverts under roads used as firelines are clear of burnable fuel.

**TOPOGRAPHY:** Steep/rugged, 40+% slope.

### OUTPUTS

**GENERAL:** Fire spread is typically a long line of fuels and slope driven surface fire in the leaf litter with 1-3 foot flame lengths. Fire is consuming well into the duff layer and the 1000-hour fuels completely. Single tree torching, should it occur, will be in conifer species and may spot up to 8 chains (0.1 mile) but, usually much less. Burn periods have been long; from 10-16 hours per day. Conditions are very favorable for burnout.

Fuel Model	ROS (ch/hr)		Flame Length (feet)		PIG	Spotting Dist.
	Head	Backing	Head	Backing		
FM09-Timber Litter	2-4	1	2-3	1-2	50%	< 0.1 miles
Harwood Leaf Litter						

Fire behavior predictions are for the hottest and driest period of the day.

**SPECIFIC:**

**Branch I:**

- Div A - Fire backing down to the Tallulah River and south toward Plumorchard Road.
- Div D - Fire holding on Plumorchard Road. Burning out of larger fuels interior.
- Div F - Continued backing and flanking north toward Flat Branch Charlies Creek.
- Div G – Continued backing/flanking north toward Flat Branch Charlies Creek and west toward the Appalachian Trail (AT).
- Div H - Fire holding on Charlies Creek with flanking/backing to the north toward Flat Branch Charlies Creek.

**Branch II:**

- Div M - Spread continuing north toward Steel Trap Knob and Dicks Knob.
- Div R - Fire spread by backing and flanking north and east toward the Coleman River Road.
- Div W - Fire holding along control lines. Burning out of larger fuels interior.
- Burrell Fire – Interior burn out of heavier fuels likely. No fire spread expected.

**AIR OPERATIONS:** General smoke will cause visibility issues in the morning, but improving in the afternoon. Smoke to the south and east of fire may hinder visibility throughout in the day.

### SAFETY

Smoke exposure for long periods can increase fatigue and impair decision making. Work to reduce smoke exposure when and where possible.

DIVISION ASSIGNMENT LIST (204)

Incident Name <b>Rock Mountain Fire</b>	Branch <b>I</b>	Division/Group <b>A</b>
Operational Period 11/15/16 0:730 to 11/15/16 19:30		


4. Operations Personnel		
Operations Chief	Alex Robertson	Division/Group Supervisor
Air Attack Supervisor	James Price	Safety Officer
		Tim Sampson

5. Resources Assigned this Period					
Resource Number	Resource	Leader	# People	Last Day to Work	Comments
	unstaffed				

**6. Control Operations/ Work Assignments:**  
Monitor fire progression towards Plumb Orchard.

**7. Special Instructions:**

8. Division/Group Communication Summary						
Function	Rx	Tx	Tone	System	(Grp) Channel	System (Grp) Channel
COMMAND	168.475	173.8125	156.7 RX/TX		7	
TACTICAL	167.100	167.100	156.7 RX/TX		4	
LOGISTICS						
AIR TO GROUND	168.7375	168.7375	None		14	

Prepared by (Resource Unit Leader) CHRISTY MERRITT	Approved by (Planning Section Chief) 	Date 11/14/16	Time 2000	Page 1 of 1
---	---	------------------	--------------	----------------

(6)

**DIVISION ASSIGNMENT LIST (204)**

<b>Incident Name</b> Rock Mountain Fire	<b>Branch</b> I	<b>Division/Group</b> D
--	--------------------	----------------------------

<b>Operational Period</b> 11/15/16 0:730 to 11/15/16 19:30
---

<b>4. Operations Personnel</b>		
Operations Chief	Alex Robertson	Division/Group Supervisor
Air Attack Supervisor	James Price	Safety Officer
		Tim Sampson

5. Resources Assigned this Period					
Resource Number	Resource	Leader	# People	Last Day to Work	Comments
	unstaffed				

**6. Control Operations/ Work Assignments:**  
Monitor and patrol.

**7. Special Instructions:**

8. Division/Group Communication Summary							
Function	Rx	Tx	Tone	System	(Grp) Channel	System	(Grp) Channel
COMMAND	168.475	173.8125	156.7 RX/TX		7		
TACTICAL	168.250	168.250	156.7 RX/TX		3		
LOGISTICS							
AIR TO GROUND	168.7375	168.7375	None		14		

Prepared by (Resource Unit Leader) <b>CHRISTY MERRITT</b>	Approved by (Planning Section Chief) 	Date 11/14/16	Time 2000	Page 1 of 1
--	--	------------------	--------------	----------------

**DIVISION ASSIGNMENT LIST (204)**

<b>Incident Name</b> Rock Mountain Fire	<b>Branch</b> I	<b>Division/Group</b> F
--	--------------------	----------------------------

**Operational Period**  
11/15/16 0:730 to 11/15/16 19:30

4. Operations Personnel			
Operations Chief	Alex Robertson	Division/Group Supervisor	Cameron Winfrey
Air Attack Supervisor	James Price	Safety Officer	Tim Sampson

5. Resources Assigned this Period					
Resource Number	Resource	Leader	# People	Last Day to Work	Comments
O-1006	TFLD	Eric Brown	1	11/27	
	TFLD (t)	D'Quincy Gordon	1	11/22	
	ENG4 Engine #657	Lucas Merrich		11/21	
	Dozer 61 *	Brad Howard			

**6. Control Operations/ Work Assignments:**  
Scout line and gather information. Prep and construct line down Big John.

**7. Special Instructions:** Assess structures in High Tower Road area. Identify resources from the division to respond to IA as needed. Ensure resources review communications plan for IA response. \*Identified as IA resource.

8. Division/Group Communication Summary							
Function	Rx	Tx	Tone	System	(Grp) Channel	System	(Grp) Channel
COMMAND	168.475	173.8125	156.7 RX/TX		7		
TACTICAL	168.250	168.250	156.7 RX/TX		3		
LOGISTICS							
AIR TO GROUND	168.7375	168.7375	None		14		
Prepared by (Resource Unit Leader) CHRISTY MERRITT							
Approved by (Planning Section Chief) 							

Date	11/14/16	Time	2000	Page	1 of 1
------	----------	------	------	------	--------



## DIVISION ASSIGNMENT LIST (204)

<b>Incident Name</b> Rock Mountain Fire	<b>Branch</b> I	<b>Division/Group</b> G
--	--------------------	----------------------------

<b>Operational Period</b> 11/15/16 0:730 to 11/15/16 19:30	
---	--

<b>4. Operations Personnel</b>		
Operations Chief	Alex Robertson	Division/Group Supervisor
Air Attack Supervisor	James Price	Safety Officer
		Tim Sampson

5. Resources Assigned this Period						
Resource Number	Resource	Leader	# People	Last Day to Work	Comments	
	unstaffed					

**6. Control Operations/ Work Assignments:**  
Monitor, patrol, and scout line.

**7. Special Instructions:**

8. Division/Group Communication Summary						
Function	Rx	Tx	Tone	System	(Grp) Channel	System (Grp) Channel
COMMAND	168.475	173.8125	156.7 RX/TX		7	
TACTICAL	167.100	167.100	156.7 RX/TX		4	
LOGISTICS						
AIR TO GROUND	168.7375	168.7375	None		14	

Prepared by (Resource Unit Leader) CHRISTY MERRITT	Approved by (Planning Section Chief) 	Date 11/14/16	Time 1955	Page 1 of 1
---	--	------------------	--------------	----------------



**DIVISION ASSIGNMENT LIST (204)**

<b>Incident Name</b> Rock Mountain Fire	<b>Branch</b> I	<b>Division/Group</b> H
--	--------------------	----------------------------


**Operational Period**  
11/15/16 0:730 to 11/15/16 19:30

<b>4. Operations Personnel</b>			
<b>Operations Chief</b>	Alex Robertson	<b>Division/Group Supervisor</b>	James Osborne
<b>Air Attack Supervisor</b>	James Price	<b>Safety Officer</b>	Tim Sampson

<b>5. Resources Assigned this Period</b>						
Resource Number	Resource	Leader	# People	Last Day to Work	Comments	
O-1002	TFLD	Don Anderson	1	11/27		
O-3	Great Northern	Adon Hahn	20	11/25		
E-1015	ENG #2408 *	Don Jones	4	11/28		
	Dozer 42					
	HEQB					
E-1006	WTT2 #1132	Jason Weatherford		11/28		
O-31	SOFR	Tom Nash		11/29		

**6. Control Operations/ Work Assignments:**  
Scout new line. Hold and improve constructed line.

**7. Special Instructions:** Assess structures in High Tower Road area. Identify resources from the division to respond for IA as needed. Ensure resources review communications plan for IA response. \*Identified as an IA resource

<b>8. Division/Group Communication Summary</b>						
Function	Rx	Tx	Tone	System	(Grp) Channel	System
COMMAND	168.475	173.8125	156.7 RX/TX		7	
TACTICAL	166.725	166.725	156.7 RX/TX		1	
LOGISTICS						
AIR TO GROUND	168.7375	168.7375	None		14	
Prepared by (Resource Unit Leader) <b>CHRISTY MERRITT</b>						
Approved by (Planning Section Chief)						
				Date	11/14/16	Time
						2000
					Page	1 of 1

(10)

**DIVISION ASSIGNMENT LIST (204)**

<b>Incident Name</b> Rock Mountain Fire	<b>Branch</b> II	<b>Division/Group</b> M
--	---------------------	----------------------------


<b>Operational Period</b> 11/15/16 0:730 to 11/15/16 19:30	
---	--

<b>4. Operations Personnel</b>			
Operations Chief	Alex Robertson	Division/Group Supervisor	James Wettstaed
Air Attack Supervisor	James Price	Safety Officer	Tim Sampson

<b>5. Resources Assigned this Period</b>						
Resource Number	Resource	Leader	# People	Last Day to Work	Comments	
O-1001	TFLD *	Brian Pitts	1	11/26		
O-4	Bear Divide Module *	Brian Anderson	10	11/19		
E-1005	WTT2 Tender 304 *	Terry Tingle	2	11/27		
O-31	SOFR	Tom Nash		11/29		

**6. Control Operations/ Work Assignments:**  
Hold and improve existing line. Provide for structure protection.

**7. Special Instructions:**  
Identify resources from the division to respond for IA as needed. Provide for structure protection.  
\* Identified as IA resources.

<b>8. Division/Group Communication Summary</b>									
Function	Rx	Tx	Tone	System	(Grp) Channel	System	(Grp) Channel		
COMMAND	168.475	173.8125	156.7 TX/RX		7	Command			
TACTICAL	166.775	166.775	156.7 TX/RX		2				
LOGISTICS									
AIR TO GROUND	170.000	170.000			15				
Prepared by (Resource Unit Leader) JOHN PETRICK / DUL		Approved by (Planning Section Chief) 		Date	11/14/16	Time	1845	Page	1 of 1

(11)

**DIVISION ASSIGNMENT LIST (204)**

<b>Incident Name</b> Rock Mountain Fire	<b>Branch</b> II	<b>Division/Group</b> R
--	---------------------	----------------------------

<b>Operational Period</b> 11/15/16 0:730 to 11/15/16 19:30	
---	--

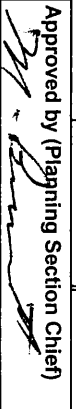
<b>4. Operations Personnel</b>			
Operations Chief	Alex Robertson	Division/Group Supervisor	Justin Ray
Air Attack Supervisor	James Price	Safety Officer	Tim Sampson

<b>5. Resources Assigned this Period</b>					
Resource Number	Resource	Leader	# People	Last Day to Work	Comments
C-1001	HC21A Dillon IR Crew *	Chad Cullum	20	11/25	
C-1003	HC21A Grangeville IR Crew	Drew Dingmann	20	11/25	
O-31	SOFR	Tom Nash		11/29	

**6. Control Operations/ Work Assignments:**  
Scout line and get intelligence. Conduct burnout along Road 54. Scout Colman River drainage.

**7. Special Instructions:**  
Identify resources from the division to respond for IA as needed. Ensure resources review communications plan for IA response. \* Identified as IA resources.

<b>8. Division/Group Communication Summary</b>							
Function	Rx	Tx	Tone	System	(Grp) Channel	System	(Grp) Channel
COMMAND	168.475	173.8125	156.7 RX/TX		7	Command	
TACTICAL	169.150	169.150	156.7 RX/TX		6		
LOGISTICS							
AIR TO GROUND	170.000	170.000			15		

Prepared by (Resource Unit Leader) JOHN PETRICK / DUL	Approved by (Planning Section Chief) 	Date 11/14/16	Time 1940	Page 1 of 1
--	---	---------------	-----------	-------------

**DIVISION ASSIGNMENT LIST (204)**

<b>Incident Name</b> Rock Mountain Fire	<b>Branch</b> II	<b>Division/Group</b> W
--	---------------------	----------------------------

<b>Operational Period</b> 11/15/16 0:730 to 11/15/16 19:30	
---	--

<b>4. Operations Personnel</b>		
<b>Operations Chief</b> Alex Robertson	<b>Division/Group Supervisor</b>	<b>Russ Hamilton</b>
<b>Air Attack Supervisor</b> James Price	<b>Safety Officer</b>	<b>Tim Sampson</b>

5. Resources Assigned this Period					
Resource Number	Resource	Leader	# People	Last Day to Work	Comments
O-1005	STEN	Doug Niemynski	1	11/25	
E-1004	WTT2 Hanover	Ken Holbert	2	11/27	
E-1011	ENG3 Shiloh Fire *	Ronald Thalacker	3	11/26	

**6. Control Operations/ Work Assignments:**  
 Hold and improve existing line. Provide for structure protection as needed. Mop up around structures along Coleman Road and Tallulah Road to the campground.

**7. Special Instructions:**  
 Identify resources to respond to initial attack as needed. Ensure resources review the communications plan for IA response. \* Identified as IA resources.

8. Division/Group Communication Summary						
Function	Rx	Tx	Tone	System	(Grp) Channel	System Command
COMMAND	168.475	173.8125	156.7 RX/TX		7	Command
TACTICAL	166.675	166.675	156.7 RX/TX		5	
LOGISTICS						
AIR TO GROUND	170.000	170.000			15	
Prepared by (Resource Unit Leader) JOHN PETRICK / DUL						
Approved by (Planning Section Chief) <i>J.P. G... (Signature)</i>			Date		11/14/16	Time 2010
						Page 1 of 1

(13)

**DIVISION ASSIGNMENT LIST (204)**

<b>Incident Name</b> Rock Mountain Fire	<b>Branch</b>	<b>Division/Group</b> <b>Burrell</b>
--	---------------	---

**Operational Period**  
11/15/16 0:730 to 11/15/16 19:30

4. **Operations Personnel**

Operations Chief	Alex Robertson	Division/Group Supervisor	
Air Attack Supervisor	James Price	Safety Officer	Tim Sampson

5. **Resources Assigned this Period**


Resource Number	Resource	Leader	# People	Last Day to Work	Comments
E-1013	ENG4 Rexburg	Robert Ricks	3	11/27	
O-26	FOBS	Greg Pelsma	1	11/29	
O-25	FOBS	Frank Rice	1	11/29	

**6. Control Operations/ Work Assignments:**  
Monitor fire and patrol fireline. Mop up as needed.

**7. Special Instructions:**  
\* Identified as an IA resource

8. **Division/Group Communication Summary**

Function	Rx	Tx	Tone	System	(Grp) Channel	System	(Grp) Channel
COMMAND	168.475	173.8125	156.7 RX/TX		7		
TACTICAL	168.775	164.150	127.3 TX only		8		
LOGISTICS							
AIR TO GROUND	168.7375	168.7375	None		14		

Prepared by (Resource Unit Leader) CHRISTY MERRITT / RESL	Approved by (Planning Section Chief) 	Date 11/14/16	Time 2030	Page 1 of 1
--	---	---------------	-----------	-------------

(14)

**DIVISION ASSIGNMENT LIST (204)**

<b>Incident Name</b> Rock Mountain Fire	<b>Branch</b>	<b>Division/Group</b> <b>Night</b>
--	---------------	---------------------------------------

<b>Operational Period</b> 11/15/16 18:00 to 11/15/16 06:00	<b>Operations Personnel</b>
---	-----------------------------

<b>4. Operations Chief</b> Alex Robertson	<b>Division/Group Supervisor</b>	
<b>Air Attack Supervisor</b> James Price	<b>Safety Officer</b>	<b>Tim Sampson</b>

5. Resource Number	Resource	Leader	# People	Last Day to Work	Comments
	ENG Michigan Hummer #33	Heyn / Baker	2		

**6. Control Operations/ Work Assignments:**  
Patrol lines and provide for structure protection.

**7. Special Instructions:**


8. Division/Group Communication Summary						
Function	Rx	Tx	Tone	System	(Grp) Channel	System (Grp) Channel
COMMAND	168.475	173.8125	156.7 RX/TX		7	
TACTICAL						
LOGISTICS						
AIR TO GROUND						

Prepared by (Resource Unit Leader) <b>JOHN PETRICK / DUL</b>	Approved by (Planning Section Chief) 	Date	11/14/16	Time	2042	Page	1 of 1
---	---	------	----------	------	------	------	--------

<b>INCIDENT RADIO COMMUNICATIONS PLAN</b>	<b>1. Incident Name</b> ROCK MOUNTAIN	<b>2. Date Time Prepared</b> 11-14-16 1800	<b>3. Operational Period Date/Time</b> DAY 11-15/0730-1930 NIGHT 11-15 11-16/1800-0600
---	--	---	---

**4. Basic Radio Channel Utilization**  
Mode: W= Wideband, N= Narrowband, D= Digital, M= Mixed

Radio Type	CH #	Function	Frequency	Tone/NAC	Mode	TGID	Assignment	Remarks
	1	TAC 1	RX: 166.7250	156.7	N		DIVISION H	
			TX: 166.7250	156.7				
	2	TAC 2	RX: 166.7750	156.7	N		DIVISION M	
			TX: 166.7750	156.7				
	3	TAC 3	RX: 168.2500	156.7	N		DIVISION D & F	
			TX: 168.2500	156.7				
	4	TAC 4	RX: 167.1000	156.7	N		DIVISION A & G	
			TX: 167.1000	156.7				
	5	TAC 5	RX: 166.6750	156.7	N		DIVISION W	
			TX: 166.6750	156.7				
	6	TAC 6	RX: 169.1500	156.7	N		DIVISION R	
			TX: 169.1500	156.7				
	7	CMD 7	RX: 168.4750	156.7	N		COMMAND REPEATER	
			TX: 173.8125	156.7				
⑤	8	LONG CREEK	RX: 168.7750		N		FOREST SERVICE LOCAL REPEATER	BURREL FIRE
			TX: 164.1500	127.3				
	9	GLASSY	RX: 168.7750		N		FOREST SERVICE LOCAL REPEATER	GAINSVILLE DISPATCH
			TX: 164.1500	114.8				
	10	BRASSTWN	RX: 168.7750		N		FOREST SERVICE LOCAL REPEATER	GAINSVILLE DISPATCH
			TX: 164.1500	136.5				
	11	CHAT SIM	RX: 168.7750		N		FOREST SERVICE LOCAL SIMPLEX CHANNEL	
			TX: 168.7750	136.5				
	12	GFC TAC 1	RX: 159.3900	156.7	N		GEORGIA FOREST COMMISION TACTICAL	
			TX: 159.3900	156.7				
	13	VFIRE 21	RX: 154.2800		N		STATE MUTUAL AID	
			TX: 154.2800					
	14	A/G BR 1	RX: 168.7375		N		AIR TO GROUND BRANCH 1	
			TX: 166.7375					
	15	A/G BR 2	RX: 170.0000		N		AIR TO GROUND BRANCH 2	
			TX: 170.0000					
	16	AIR GRD	RX: 168.6250		N		AIR GUARD	
			TX: 168.6250	110.9				

5. Prepared by (Communications Unit)  **RUSS MCDONALD** COMMAND GROUP

Note: This is not a standard NWCG ICS205 Form



<b>INCIDENT RADIO COMMUNICATIONS PLAN</b>	<b>1. Incident Name</b> ROCK MOUNTAIN	<b>2. Date Time Prepared</b> 11-14-16 1800	<b>3. Operational Period Date/Time</b> DAY 11-15-16 0730-1930 NIGHT 11-15 11-16 1800-0600
---	--	---	--

**4. Basic Radio Channel Utilization**  
Mode: W= Wideband, N= Narrowband, D= Digital, M= Mixed

Radio Type	CH #	Function	Frequency	Tone/NAC	Mode	TGID	Assignment	Remarks
	1	CHAT SIM	RX: 168.7750 TX: 168.7750	136.5	N		FOREST SERVICE LOCAL SIMPLEX	
	2	BRASSTWN	RX: 168.7750 TX: 164.1500	136.5	N		FOREST SERVICE LOCAL REPEATER	
	3	R8 FIRE	RX: 169.9000 TX: 169.9000		N		FOREST SERVICE REGION 8 FIRE TACTIAL	
	4	CMD 7	RX: 167.1000 TX: 167.1000	156.7 156.7	N		ROCK MT. COMMAND REPEATER	
	5	BLK MT	RX: 168.7750 TX: 164.1500	100.0	N		FOREST SERVICE LOCAL REPEATER	
	6	GLASSY	RX: 168.7750 TX: 164.1500	114.8	N		FOREST SERVICE LOCAL REPEATER	
	7	LONG CRK	RX: 168.7750 TX: 164.1500	127.3	N		FOREST SERVICE LOCAL REPEATER	
(17)	8	CHENOC	RX: 168.7750 TX: 164.1500	127.3	N		FOREST SERVICE LOCAL REPEATER	
	9	NIFC TAC 1	RX: 168.0500 TX: 168.0500		N		NIFC TACTICAL CHANNEL	
	10	NIFC TAC 2	RX: 168.2000 TX: 168.2000		N		NIFC TACTICAL CHANNEL	
	11	NIFC TAC 3	RX: 168.8000 TX: 168.8000		N		NIFC TACTICAL CHANNEL	
	12	GFC TAC 1	RX: 159.3900 TX: 159.3900	156.7 156.7	N		GEORGIA FOREST COMMISION TACTICAL	
	13	VFIRE 21	RX: 154.2800 TX: 154.2800		N		STATE MUTUAL AID	
	14	A/G BR 1	RX: 168.7375 TX: 166.7375		N		AIR TO GROUND BRANCH 1	
	15	A/G BR 2	RX: 170.0000 TX: 170.0000		N		AIR TO GROUND BRANCH 2	
	16	AIR GRD	RX: 168.6250 TX: 168.6250	110.9	N		AIR GUARD	

**5. Prepared by (Communications Unit)**  
 RUSS MCDONALD  IA GROUP

*Note: This is not a standard NWCG ICS205 Form*



10. TASK/MISSION/ASSIGNMENT (Type/Function includes: Air Tactical, Retardant, Recon, Personnel Transport, Water Dropping, S&R, etc.)

TYPE/FUNCTION	NAME OF PERSONNEL OR CARGO (if applic) OR INSTRUCTIONS FOR TACTICAL AIRCRAFT	MISSION AVAIL.	FLY FROM	FLY TO
<b>Helicopter Retardant/Water Drops</b>	As needed and ordered through Air Attack or on Command Ch.		Toccoa Airport	TBD
<b>Sling Loads/Backhaul</b>	Support the line as requested.			
<b>Troop Shuttle</b>				
<b>Recon</b>	Order as needed, order through AOBD, ASGS.		Toccoa Airport	TBD
<b>Aerial Ignition</b>				
<b>Medical Evacuation</b>	Order through Forest Dispatch be prepared to give 9 – Line information.			
<b>Fixed Wing Retardant Drops</b>	Order through air attack, AOBD			
<b>IA</b>	Order Aerial resources through Air Attack or ICP			
<b>Commo Flight</b>				
<b>Special Instructions</b>	<b>Helicopter Managers be sure to give your daily costs to your helibase manager. Helibase manager turn in your costs to ASGS.</b>			
220-ICS (2/99) PAGE 2 Of 2 NFES 1351	Request for sling supply support should be ordered through ICP commo, (include location, date and time needed). Sling backhaul should be ongoing and coordinated through helibase.			

**HEALTH AND SAFETY MESSAGE**

***SAFETY*** starts with ***YOU***

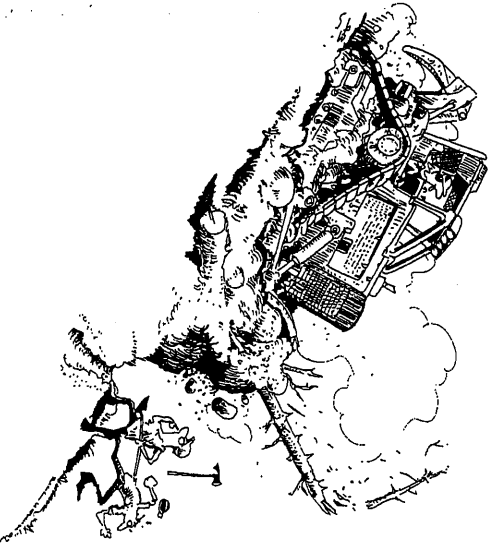
We are **ALL** accountable for **SAFE** behaviors

<b>INCIDENT's:</b> Rock Mountain Fire	<b>DATE:</b> November 15 <sup>th</sup>	<b>Oper. Period:</b> Day/Night
<b>Major Hazards and Risks:</b> Fatigue, Snakes, Driving Hazards, and Hazard Trees		

**Transportation:**

Seat belts are expected to be worn at all times. One simple mistake in driving can have serious, long lasting ramifications. Drive defensively and pull over for a break if sleepy. Lots of congestion and some folks are looking at the fire and not the road. Always expect someone to be coming around the next curve. Drive slowly, with lights on, smaller vehicles yield to big ones, use chocks & spotters.

Look up, Look Down, Look Around – Maintain your lookouts, keep up good communications, know where your escape routes are located. Crews may be working in country they are not familiar with. Identify and communicate the hazards to all assigned personnel within your area of operations.



5. UNINFORMED ON STRATEGY, TACTICS AND HAZARDS

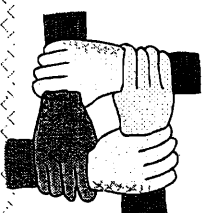
**HAZARD TREES**

Hazard trees, both dead snags and live green trees, are one of the most common risks encountered on the fireline. All firefighters should frequently survey their work area for potential hazard trees.

Look at your IRPG pg 22 and 23 for hazard tree indicators and hazard control.



## *Human Resource Message*



### **Let's Keep Community Relations Great!**

**Our Hosts in the town of Clayton and the surrounding areas have been very generous and thankful for all of your efforts and hard work. Not a trip to town goes by without folks offering their thanks to the fire fighters!**

**Let's keep it that way! Continue to be respectful when traveling through and to town and interacting with folks. Remember that while most of us leave and go on to other fires, this is their home and they remain. Let's leave them with a great impression!**

**Have a safe and enjoyable shift and thanks for all you do!**

**Mary Rourke**

**Human Resource Specialist (HRS)**

**509-846-9106**

Keep your thoughts positive because your thoughts become your words -- Ghandi

# MEDICAL PLAN (ICS 206 WF)

<b>1. Incident/Project Name</b> <b>Rock Mountain</b>		<b>2. Operational Period</b> Date/Time <b>11/15/2016 Day 0730 - 1930</b> <b>Night 1800 - 0600</b>				
<b>3. Ambulance Services</b>		Name	Location	Phone & EMS / Frequency	Advanced Life Support (ALS) Yes No	
Rabun County Emergency Services		Clayton, GA	Forest Dispatch 20 min response to Tate City	911	X	
<b>4. Air Ambulance Services</b>						
Name		Phone	Response Time to Tate City / Air to Ground Frequency			
Life Flight - Georgia 14		911	10 min 155.340 Tx, Rx - (No Tone)			
<b>5. Hospitals</b>						
Name Complete Address		GPS Datum - WGS 84 Coordinate Standard Degrees Decimal Minutes	Travel Time From Tate City Air Gnd	Phone / Frequency	Heliport Information Rotor Dia. / Wt.	Level of Care Facility
Mountain Lakes Medical Center 196 Ridgecrest Circle, Clayton, GA		Lat: Long Vector - 261° -	20 min	706 782-3100	-	Minor Medical
Habersham Medical Center 541 441 Historic Hwy N Demorest, GA		Lat: 34 34.88 Long 83 32.22 Vector - 180° - From Tate City	30 min 30 min	706 754-2161	Roof Pad	
<b>Emergency Response Procedures</b>						
Day Operational Period General - All Divisions:						
<b>MEDICAL EMERGENCY - Radio Contact Rock Mtn. Communications</b>						
<b>Medical Patrol</b>						
<b>Unit Name - Rabun County MEDIC 10 (Paramedic Response)</b>						
<b>Location - Branch I / II break (Rock Mtn. Staging)</b>						
<b>Radio Contact - Command Channel 1</b>						
Night Operational Period No Medical Patrols						
<b>MEDICAL EMERGENCY - Radio Contact Chatahoochee-Oconee Dispatch</b>						
During a medical emergency, first radio communications should include information from: Block 4 - Medical Incident Report (IRPG Page 108)						
<b>SEVERITY of EMERGENCY, TRANSPORT PRIORITY - GREEN / Routine, YELLOW / Serious, RED / Urgent,</b> along with short injury / illness description. If <b>YELLOW</b> or <b>RED</b> request ground or air ambulance response. <i>Confirm ETA and Call Sign</i> for incoming medical transport.						
<b>6. Prepared by (Medical Unit Leader)</b>		<b>7. Date/Time</b>	<b>8. Reviewed By (Safety Officer)</b>		<b>9. Date</b>	
Steve Ofofpaik		11/14/16 1700	Tim Santapras		11/14/16	



# MEDICAL PLAN (ICS 206 WF)

## Medical Incident Report

FOR ALL MEDICAL EMERGENCIES- IDENTIFY ON SCENE INCIDENT COMMANDER BY NAME AND POSITION AND ANNOUNCE "MEDICAL EMERGENCY" TO INITIATE RESPONSE FROM IMT COMMUNICATIONS/DISPATCH.

Use items one through nine to communicate situation to communications/dispatch.

### 1. CONTACT COMMUNICATIONS/DISPATCH

Ex: "Communications, Div. Alpha. Stand-by for Priority Medical Incident Report." (If life threatening request designated frequency be cleared for emergency traffic.)

### 2. INCIDENT STATUS: Provide incident summary and command structure.

<b>Nature of Injury/Illness</b>	Describe the injury (Ex: Broken leg with bleeding)
Incident Name	Geographic Name + "Medical" (Ex: Trout Meadow Medical)
Incident Commander	Name of IC
Patient Care	Name of Care Provider (Ex: EMT Smith)

### 3. INITIAL PATIENT ASSESSMENT: Complete this section for each patient. This is only a brief, initial assessment. Provide additional patient info after completing this 9 Line Report.

Number of Patients:	Male / Female	Age:	Weight:
Conscious? <input type="checkbox"/> YES	<input type="checkbox"/> NO = MEDEVAC		
Breathing? <input type="checkbox"/> YES	<input type="checkbox"/> NO = MEDEVAC		
Mechanism of Injury:			
What caused the injury?			
Lat/Long (Datum WGS84)			
Ex: N 40° 42.45' x W 123° 03.24'			

### 4. SEVERITY OF EMERGENCY, TRANSPORT PRIORITY

SEVERITY	TRANSPORT PRIORITY
<input type="checkbox"/> <b>URGENT-RED Life threatening injury or illness.</b> Ex: Unconscious, difficulty breathing, bleeding severely, 2° - 3° burns more than 4 palm sizes, heat stroke, disoriented.	Ambulance or MEDEVAC helicopter. Evacuation need is <b>IMMEDIATE</b> .
<input type="checkbox"/> <b>PRIORITY-YELLOW Serious Injury or illness.</b> Ex: Significant trauma, not able to walk, 2° - 3° burns not more than 1-2 palm sizes.	Ambulance or consider air transport if at remote location. Evacuation may be <b>DELAYED</b> .
<input type="checkbox"/> <b>ROUTINE-GREEN</b> Not a life threatening injury or illness. Ex: Sprains, strains, minor heat-related illness.	Non-Emergency. Evacuation considered <b>Routine of Convenience</b> .

### 5. TRANSPORT PLAN:

Air Transport: (Agency Aircraft Preferred)

Helispot  Short-haul/Hoist  Life Flight  Other

Ground Transport:

Self-Extrac  Carry-Out  Ambulance  Other

### 6. ADDITIONAL RESOURCE/EQUIPMENT NEEDS:

Paramedic/EMT(s)  Crew(s)  SKED/Backboard/C-Collar

Burn Sheet(s)  Oxygen  Trauma Bag

Medication(s)  IV/Fluid(s)  Cardiac Monitor/AED

Other (i.e. splints, rope rescue, wheeled litter)

### 7. COMMUNICATIONS:

Function	Channel Name/Number	Receive (Rx)	Tone/NAC *	Transmit (Tx)	Tone/NAC *
Ex: Command	Forest Rpt. Ch. 2	168.3250	110.9	171.4325	110.9
COMMAND					
AIR-TO-GRND					
TACTICAL					

\*(NAC for digital radio system)

### 8. EVACUATION LOCATION:

Lat/Long (Datum WGS84)	
Ex: N 40 42.45' x W 123 03.24'	
Patients ETA to Evacuation Location:	
Helispot/Extraction Size and Hazards:	

### 9. CONTINGENCY:

Considerations: If primary options fail, what actions can be implemented in conjunction with primary evacuation method? Be thinking ahead...

REMEMBER: Confirm ETAs of resources ordered Act according to your level of training Be Alert. Keep Calm. Think Clearly. Act Decisively.

24