

Tatum Gulf & Coosa Fires FY-17

**INCIDENT
MANAGEMENT**
T E A M

**GEORGIA FORESTRY
COMMISSION**



Saturday November 26th

GA-GAS-160003



GEORGIA FORESTRY
COMMISSION



Letter from GFC Incident Commander:

To: All Tatum Gulf and Coosa Complex Incident Personnel:

As A Georgia Forestry Commission Type 2 Incident Commander, I am committed to a policy of “zero tolerance” of inappropriate behavior during incident operations. Any form of harassment, discriminatory practices, or disrespectful behavior will not be tolerated.

Guidelines on in-appropriate behavior both “on Duty” and “off Duty” while assigned are addressed within each agencies policies. Our Team expects all incident personnel to follow established government policies for behavior along with all Illegal drug and alcohol directives.

Our Incident Management Team endorses and supports an attitude of mutual respect for all personnel and the public we serve.

We expect a strong work ethic and an attitude of Safety at all times!
Sincerely,

/s/ Trent Ingram
Incident Commander
Georgia Forestry Commission Type 2 Incident Management Team

INCIDENT OBJECTIVES

1. Incident Name

2. Date Prepared

3. Time Prepared

**Tatum Fires
GA-GAS 160003****11-25-16****1900**

4. Operational Period: 0800-2000

5. General Control Objectives For The Incident

Objectives for the Incident:

- Provide for safety of incident personnel and public in all incident operations.
- Provide for structure protection and point source protections for values of risk.
- Maintain a positive working relationship with all adjacent landowners, cooperators, Stakeholders, State and Federal partners.
- *Provide time management and IA suppression in the Coosa West District.*
- In cooperation with local land owners and communities, use full suppression strategies and tactics to minimize damage to private lands.
- Protect all cultural and archeological sites and structures in the area.
- Manage the fires cost-effectively consistent with the values at risk.

Control Objectives:

Tatum Gulf Fire:

Keep the fire east of the Alabama Great Southern Railroad, west of the Tatum Gulf Road/West Bluff Road/Crook View Road, south of Forester Gulch.

Coosa Complex Fires:

Keep the fires within the containment lines by refreshing current fire lines, mop up when needed and direct attack on fire outside of the containment lines.

Provide IA Suppression within Coosa West while giving local resources time off.

6. **Weather Discussion – See Weather R/x**7. **General Safety Message****See detailed Safety Message within the IAP**

8. ATTACHEMENTS (X IF ATTACHED)

 Organization List - ICS 203 Medical Plan - ICS 206 Demob Planner Division Assignment Lists - ICS 204 Safety Message Maps Communications Plan - ICS 205 Air Ops Plan ICS 220

[]

9. Prepared By (Planning Section Chief)

10. Approved By (Incident Commander)

/s/ Keith Murphy**/s/ Trent Ingram**

ORGANIZATION ASSIGNMENT LIST		9. Operations Section		
1. Incident Name Coosa Fires FY-17		Chief	Brent McCarty 11/28 Blair Joiner (t) 11/28 Sammy Young GSP Don McGowan DNR	
		a. Branch – Divisions/Groups		
2. Date 11/25/2016	3. Time 1930	Division	A	Chris Buchanan 11/29
		Division	B	Jason Squires
4. Operational Period 11/26/2008 0800-2000		Division	C	Troy Helms 11/28
		Division	D	Todd Milam
5. Incident Commander and Staff				
Incident Commander	Trent Ingram 11/28			
Deputy				
Safety Officer	Shane Barrow 11/28 Phil Dalenburg 11/28		Division	Tatum Gulf Jason Squires
Information Officer	Byron Haire 11/28			
Information Officer	Hannah Cowart 12/3			
Liaison Officer				
6. Agency Reps				
Agency	Name		c. Branch - Divisions/Groups	
GFC Protection	Frank Sorrells		Division	Holding 1 Jason Squires 12/1
GFC Coosa District	Ken Masten		Division	Holding 2 Brent McCarty
GFC Coosa District	Kris Butler			
GEMA	Tim Reeves			
Dade Co.	Alex Case			
GA DNR	Capt Jeff Galloway		d. Branch – Divisions/Groups	
7. Planning Section				
Chief	Keith Murphy 11/29			
Resources Unit				
Situation Unit				
SCKN/DMOB	Chuck Norvell 12/2			
GISS	Michael Torbett 11/28			
Computer Tech	Rusty Brown 12/1			
Documentation			d. Air Operations Branch	
Training Specialist	Al Hoke 11/28		AOBD	Clay Chatham
Resource Advisor			Helibase Mgr.	
FOBS	Phillips 11/28 McGinnis 11/28		ASGS	
			Air Attack Sup.	
			10. Finance Section	
			Chief	Penny Brown 11/28
8. Logistics Section				
Chief	Tom Lambert 11/28			
Supply Unit	Rachel Saunders 12/6			
Facilities Unit	Jason Harris 12/6			
Medical Unit	Clint Rogers (t) 11/30			
Communication	Kelly Towe 11/30			
Food/Runner	Colby Auckland 12/3			
Food/Runner	Shawn Diddie 12/6			
Mechanic	Brian Holcolmb 12/1			
			Prepared by (Resource Unit Leader)	
			Keith Murphy	

Forestry Weather & Smoke Management Forecast
From Georgia Forestry Commission
Issued at: 1230 PM EST Fri 25 Nov 2016

District 1 (Coosa-Northwest)					
CAUTION ITEMS					
Dallas, Ga ; is forecast to have a Class 4 day today!					
	Tonight	Tomorrow	Saturday Night	Sunday	Sunday Night
Sky Condition	Mostly Clear	Mostly Sunny	Partly Cloudy	Partly Sunny	Partly Cloudy
Temperature	35 To 39	56 To 60	27 To 31	60 To 64	39 To 43
Relative Humidity	95 To 100	28 To 33	95 To 100	25 To 28	67 To 72
Wind Chill Temperature	26 To 32	----	18 To 25	----	32 To 39
Probability of Precipitation	None	None	None	None	None
Surface Wind (Open)	North 8-12mph	North 8-12mph	North 5- 8mph	Variable 3-6mph	Variable 3-6mph
Canopy Wind	North 6-10mph	North 6-10mph	Variable 3-6mph	Variable 3-6mph	Variable 3-6mph
Smoke Dispersion Index	17(Generally Poor)	47(Generally Good)	7(Poor)	54(Generally Good)	7(Poor)
Fog Potential	None	None	Slight	None	None
Low Visibility Occurrence Risk Index	6(Medium)	1(Low)	8(High)	1(Low)	3(Low)
Mixing Height	10m 33ft	2032m 6665ft	10m 33ft	2303m 7554ft	610m 2001ft
Transport Wind Speed	8m/s 18mph	7m/s 16mph	5m/s 11mph	5m/s 11mph	5m/s 11mph
Turner & Atmosphere Tendency	4(Normal)	4(Normal)	5(Normal)	3(Normal)	5(Normal)
Plume Trajectory	South	South	South	Northwest	Northwest
Drying Potential	Low	Moderate	Low	Moderate	Low
Available Sunshine	None	Around 8 Hours	None	Around 7 Hours	None

[Current KBDI and Fuel Moisture values - GFC NFDRS 1300 values](#)
[Hourly Weather Data - ROMANS Hourly values](#)



Nathan Deal
Governor

Robert D. Farris
Director

Board of Commissioners:

Wesley Langdale, Chairman
Valdosta

Jimmy Allen
Chula

Jim L. Gillis, Jr.
Soperton

Robert Pollard
Appling

W. Earl Smith
Greensboro

Larry Spillers
Barnesville

H. G. Yeomans
Swainsboro

INCIDENT
MANAGEMENT
T E A M

GEORGIA FORESTRY
COMMISSION



5645 Riggins Mill Road
Dry Branch, GA 31020
P. 478-751-3500
F. 478-751-3465

An Equal Opportunity
Employer & Service Provider

Memorandum

To: All Resources

From: Trent Ingram

The Type 2 Team has not only been delegated with fire control responsibilities, but to do so while managing our overtime in the process. Considering this we have identified individuals with the highest comp time balances and will classify these resources as *Unavailable* and *Off & On-Call* which is defined below.

Unavailable: you are off duty and not subject to be called in during your Unavailable Period, which is defined as Monday through Monday.

Off & On-Call: you are off duty on comp time, but subject to be called in at any time and will need to carry your pager.

Our out of district resources will be repositioned throughout Coosa West to fill in where local resources are Unavailable or Off & On-Call.

We will re-evaluate this Monday to Monday after reviewing updated comp balances.

Thank you for your cooperation,

Trent Ingram

DIVISION ASSIGNMENT LIST			1. Branch		2. Division A		
3. Incident Name Coosa Fires FY-17			4. Operational Period Date: 11/26/16 Time:				
5. Operations Personnel							
Operations Chief		Brent McCarty/Blair Joiner		DIVS		Chris Buchanan	
Safety Officer		Shane Barrow/Carson Jones		Air Attack Supervisor		Clay Chatham	
Branch Director							
6. Resources Assigned this Period							
Strike Team/Task Force/ Resource Designator		Leader / Name / Designator		Num. Per.	Last Shift	Drop Off PT./Time	Pick Up PT./Time
DOZ		Pike 70				Polk/Paulding	
ENG6		Glynn 86				Polk/Paulding	
ENG6		Tatnall 86				Whitfield/Catoosa	
DOZ		Austin Temple				OFF & On Call-Polk/Paulding	
DOZ		Tayler Willingham				Chattooga/Floyd	
DOZ		Chris Key				Chattooga/Floyd	
DOZ		Tim Sosbee				OFF & On Call-Chattooga/Floyd	
DOZ		Stacy Cantrell				Chattooga/Floyd	
DOZ		Dean Cornett				Unavailable	
PU/CR		Mike Brunson				OFF & On Call	
DOZ		Cornell Bryant				Unavailable	
DOZ		Nathan Oakes				Unavailable	
PU/CR		Denise Croker				OFF & On Call	
DOZ		Tim Jones				Unavailable	
DOZ		Bryan Rooks				Unavailable	
7. Control Operations - Chattooga/Floyd/Polk/Paulding							
8. Special Instructions							
9. Division/Group Communication Summary							
Function		Frequency		System		Channel	
Command				KING NIFC			
Tactical Div/Group				KING NIFC			
				Logistics		KING NIFC	
				Air to Ground		KING NIFC	
Prepared by (Resource Unit Ldr.) Keith Murphy			Approved by (Planning Sect. Ch.) /s/Keith Murphy			Date November 25, 2016	Time 1930

DIVISION ASSIGNMENT LIST		1. Branch		2. Division B			
3. Incident Name Coosa Fires FY-17		4. Operational Period Date: 11/26/16 Time:					
5. Operations Personnel							
Operations Chief	Brent McCarty/Blair Joiner	DIVS	Jason Squiers				
Safety Officer	Phil Dalenburg	Air Attack Supervisor	Clay Chatham				
Branch Director							
6. Resources Assigned this Period							
Strike Team/Task Force/ Resource Designator	Leader / Name / Designator	Num. Per.	Last Shift	Drop Off PT./Time	Pick Up PT./Time		
DOZ	Harris 71			Dade			
DOZ	Shoulderbone 71			Walker			
ENG6	Upson 86			Walker			
DOZ	Ted Rumley			OFF & On Call-Dade			
DOZ	Chris Henderson			OFF & On Call-Walker			
DOZ	Robert Dunn			Unavailable			
PU/CR	Heath Morton			Off & On Call			
DOZ	Kerry Phillips			Unavailable			
PU/CR	Darryl Jackson			OFF & On Call			
DOZ	Andrew Gamlen			OFF & On Call-Walker			
DOZ	Richard Ray			OFF & On Call-Walker			
DOZ	Stacy Cantrell			Unavailable			
7. Control Operations - Dade/Walker							
8. Special Instructions							
9. Division/Group Communication Summary							
Function	Frequency	System	Channel	Function	Frequency	System	Channel
Command		KING NIFC		Logistics		KING NIFC	
Tactical Div/Group		KING NIFC		Air to Ground		KING NIFC	
Prepared by (Resource Unit Ldr.) Keith Murphy		Approved by (Planning Sect. Ch.) /s/Keith Murphy		Date November 25, 2016		Time 1930	

DIVISION ASSIGNMENT LIST		1. Branch		2. Division C			
3. Incident Name Tatum Gulf FY-17		4. Operational Period Date: 11/26/16 Time:					
5. Operations Personnel							
Operations Chief	Brent McCarty/Blair Joiner	DIVS	Troy Helms				
Safety Officer	Shane Barrow/Carson Jones	Air Attack Supervisor	Clay Chatham				
Branch Director							
6. Resources Assigned this Period							
Strike Team/Task Force/ Resource Designator	Leader / Name / Designator	Num. Per.	Last Shift	Drop Off PT./Time	Pick Up PT./Time		
DOZ	Houston 70			Whitfield			
DOZ	Seminole 71			Gilmer			
ENG6	Liberty 86			Whitfield			
DOZ	Ken Poteet			Whitfield			
DOZ	Kevin Cline			Gordon/Murray			
DOZ	Austin Roland			Gilmer/Pickens			
DOZ	Tony Keene			Gilmer/Pickens			
DOZ	Kenneth Harkins			OFF & On Call-Gordon/Murray			
PU/CR	Chuck Arnold			OFF & On Call			
DOZ	Jeremy Ridley			Unavailable			
PU/CR	Vicky Edge			Unavailable			
DOZ	Adam Greeson			Unavailable			
DOZ	Matt Rymer			Unavailable			
PU/CR	Seth Peirce			OFF & On Call			
DOZ	Stephen Richards			Unavailable			
DOZ	Steven Wells			Unavailable			
7. Control Operations - Catoosa/Whitfield/Gordon/Murray/Gilmer/Pickens							
8. Special Instructions							
9. Division/Group Communication Summary							
Function	Frequency	System	Channel	Function	Frequency	System	Channel
Command		KING NIFC		Logistics		KING NIFC	
Tactical Div/Group		KING NIFC		Air to Ground		KING NIFC	
Prepared by (Resource Unit Ldr.) Keith Murphy		Approved by (Planning Sect. Ch.) /s/Keith Murphy		Date November 25, 2016		Time 1930	

DIVISION ASSIGNMENT LIST			1. Branch		2. Division D		
3. Incident Name Coosa Fires FY-17			4. Operational Period Date: 11/26/16 Time:				
5. Operations Personnel							
Operations Chief		Brent McCarty/Blair Joiner		DIVS		Todd Milam	
Safety Officer		Shane Barrow/Carson Jones		Air Attack Supervisor		Clay Chatham	
Branch Director							
6. Resources Assigned this Period							
Strike Team/Task Force/ Resource Designator		Leader / Name / Designator		Num. Per.	Last Shift	Drop Off PT./Time	Pick Up PT./Time
DOZ		Oglethorpe 71				Bartow/Cherokee	
ENG6		Randolph 86				Bartow/Cherokee	
DOZ		Patrick Floyd				On Call-Bartow/Cherokee	
PU/CR		Mark Munns				Unavailable	
DOZ		Silas Richey				Unavailable	
DOZ		Mason Turner				Unavailable	
7. Control Operations - Bartow/Cherokee/North Fulton							
8. Special Instructions							
9. Division/Group Communication Summary							
Function	Frequency	System	Channel	Function	Frequency	System	Channel
Command		KING NIFC		Logistics		KING NIFC	
Tactical Div/Group		KING NIFC		Air to Ground		KING NIFC	
Prepared by (Resource Unit Ldr.) Keith Murphy		Approved by (Planning Sect. Ch.) /s/Keith Murphy			Date November 25, 2016		Time 1930

DIVISION ASSIGNMENT LIST				1. Branch		2. Division Holding Group 1	
3. Incident Name Coosa Fires FY17				4. Operational Period Date: 11/26/16 Time: 0800-2000			
5. Operations Personnel							
Operations Chief		Brent McCarty		DIVS		Jason Squires	
Safety Officer		Shane Barrow/Carson Jones		Air Attack Supervisor		Clay Chatham	
6. Resources Assigned this Period							
Strike Team/Task Force/ Resource Designator	Leader / Name / Designator			Num. Per.	Trans. Needed	Drop Off PT./Time	Pick Up PT./Time
UTV	Alan Isler			1	N	0800	2000
UTV	Jamie Dowd			1	N	0800	2000
UTV	Zack Brock			1	N	0800	2000
UTV	Brandon Baker			1	N	0800	2000
DNR LE	RFC. Roger McConkey			1	N	0800	2000
7. Control Operations							
<ul style="list-style-type: none"> - Monitor & patrol perimeter of fire on Brown, Fox Mountain, Creek Road and Tower. - Monitor leaf litter fall within the fireline and clean out breaks as needed with leaf blowers. 							
8. Special Instructions							
9. Division/Group Communication Summary							
Function	Frequency	System	Channel	Function	Frequency	System	Channel
Command		KING NIFC		Logistics		KING NIFC	
Tactical Div/Group		KING NIFC	Tac 1	Air to Ground	Rx 159.3900 Tx 159.3900	KING NIFC	
Prepared by (Resource Unit Ldr.) Keith Murphy		Approved by (Planning Sect. Ch.) /s/Keith Murphy			Date November 25, 2016		Time 1930

DIVISION ASSIGNMENT LIST			1. Branch		2. Division Holding Group 2		
3. Incident Name Coosa Fires FY17			4. Operational Period Date: 11/26/16 Time: 0800-2000				
5. Operations Personnel							
Operations Chief		Brent McCarty		Group			
Safety Officer		Shane Barrow/Carson Jones		Air Attack Supervisor		Clay Chatham	
6. Resources Assigned this Period							
Strike Team/Task Force/ Resource Designator		Leader / Name / Designator		Num. Per.	Trans. Needed	Drop Off PT./Time	Pick Up PT./Time
UTV		Chris Roberts		1	N	0800	2000
UTV		Forest Buckner		1	N	0800	2000
UTV		Mitch Bukner		1	N	0800	2000
UTV		Ashley Colston		1	N	0800	2000
DNR LE		Cap. Casey Jones		1	N	0800	2000
7. Control Operations - Pre-position in Calhoun & cover DIVS A, C, D, as needed. - Monitor & patrol perimeter on Rocky Fire, Johnson Fire & Treat Mountain Fire. - Monitor leaf litter fall within the fireline and clean out breaks as needed with leaf blowers.							
8. Special Instructions							
9. Division/Group Communication Summary							
Function	Frequency	System	Channel	Function	Frequency	System	Channel
Command		KING NIFC		Logistics		KING NIFC	
Tactical Div/Group	Rx 159.3900 Tx 159.3900	KING NIFC	Tac 1	Air to Ground	168.350	KING NIFC	2
Prepared by (Resource Unit Ldr.) Keith Murphy		Approved by (Planning Sect. Ch.) /s/Keith Murphy			Date November 25, 2016		Time 1930

DIVISION ASSIGNMENT LIST				1. Branch Dade		2. Division Tatum Gulf	
3. Incident Name Tatum Gulf				4. Operational Period Date: 11/26/16 Time: 0800-2000			
5. Operations Personnel							
Operations Chief		Brent McCarty		DIVS		Jason Squires	
Safety Officer		Phil Dalenburg		Air Attack Supervisor		Clay Chatham	
6. Resources Assigned this Period							
Strike Team/Task Force/ Resource Designator		Leader / Name / Designator		Num. Per.	Last Shift	Drop Off PT./Time	Pick Up PT./Time
TFLD		Steve Campbell		1	11/30	0800	2000
Bryan 86 ENG6 E-123		Hazard/Lane		2	11/26	0800	2000
Ben Hill 86 ENG6 E-126		Brannen/Browning/Powell		3	11/26	0800	2000
Oconee PU		Woodard		1	11/26	0800	2000
Stewardship PU		Atkins		1	11/28	0800	2000
State Lands PU		Tucker		1	11/29	0800	2000
DNR ENG6		Floyd/Coleman		2	12/2	0800	2000
DNR ENG6		Harrington/Massie		2	12/2	0800	2000
UTV		Michael Staton		1	N	0800	2000
UTV		Nathan Weaver		1	N	0800	2000
UTV		Joe Murphy		1	N	0800	2000
UTV		Seth Thompson		1	N	0800	2000
7. Control Operations							
<ul style="list-style-type: none"> - Continue to monitor and prep any structures. - Monitor breaks and use leaf blowers and clean as needed. 							
8. Special Instructions							
Drive defensively; watch out for limbs, pedestrians and wildlife. Drink plenty of water and take frequent rest breaks. For any additional Resource Requests, Contact Brent McCarty (OSC2).							
9. Division/Group Communication Summary							
Function	Frequency	System	Channel	Function	Frequency	System	Channel
Command		KING NIFC	Dade Repeater	Logistics		KING NIFC	
Tactical Div/Group	Rx 159.3900 Tx 159.3900	KING NIFC	Tac 1	Air to Ground	168.350	KING NIFC	2
Prepared by (Resource Unit Ldr.) Keith Murphy		Approved by (Planning Sect. Ch.) /s/Keith Murphy			Date November 25, 2016		Time 1930

Georgia Forestry Radio Communications Instate Plan ICS-205			Group 01	Incident Name Coosa Fires FY 17			Date/Prepared 11/25/2016		Operational Period Date		
Ch #	Function	Channel Name	Assignment	RX Freq		RX DPL	TX Freq		TX DPL	Mode A,D or M	Remarks
1	Tactical	Tac 1	Gfc Primary & Air to Ground ops	159.3900		CSQ	159.3900		156.7	A	
2	Tactical	Tac 2	Division	151.3475		D 031	151.3475		D 031	A	
3	Tactical	Tac 3	Division	159.2925		D 031	159.2925		D 031	A	
4	Tactical	VFire 21/Mutual Aid	Co-op & Emergency	154.2800		CSQ	154.2800		156.7	A	Move emergency traffic to this Channel
5	Tactical	S.E. Compact	Division	159.2850		CSQ	159.2850		156.7	A	
6	Repeater	Dade	Command	159.2250		110.9	151.2800		123.0	A	
7	Repeater	Catoosa	Command	159.2250		110.9	151.2800		131.8	A	
8	Repeater	Chatooga	Command	159.2250		110.9	151.2800		114.8	A	
9	Repeater	Cherokee	Command	159.2250		110.9	151.2800		141.3	A	
10	Repeater	Floyd	Command	159.2250		110.9	151.2800		192.8	A	
11	Repeater	Fannin	Command	159.2250		110.9	151.2800		173.8	A	
12	Repeater	Gilmer	Command	159.2250		110.9	151.2800		100.0	A	
13	Repeater	Murray	Command	159.2250		110.9	151.2800		151.4	A	
14	Repeater	Polk	Command	159.2250		110.9	151.2800		186.2	A	
15	Repeater	Walker	Command	159.2250		110.9	151.2800		162.2	A	
16											
*	Southern LINC	GFC D1	ICP	#141		N/A	#141		N/A	D	GFC Command
Prepared by (Communications Unit) K.Towe 478-308-4770						Notes: Use repeaters for Essential radio traffic, Utilize Tac Channels as much as possible There is a LINC in the GFC Command Trailer set on GFC D1 talk group					

HEALTH AND SAFETY MESSAGE

SAFETY starts with *YOU*

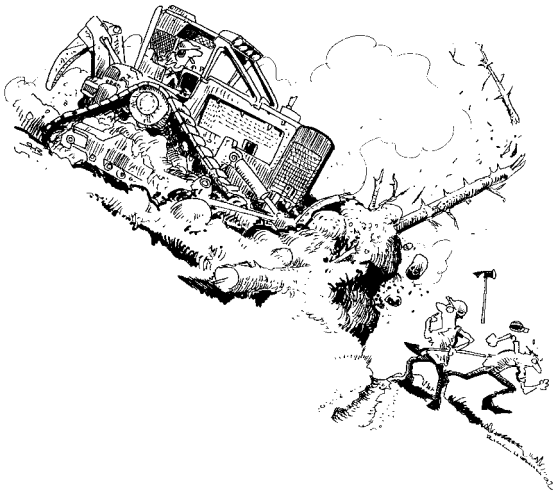
We are ALL accountable for SAFE behaviors

INCIDENT: Tatum Gulf / Coosa West IA Support	DATE: November 26, 2016	TIME: 0730
--	-------------------------	------------

Major Hazards and Risks: New Assignments; Air Operations; Fatigue; Transportation; Structural Protection/Hazardous Materials

- ***NEW ASSIGNMENTS:** Give / get a good briefing about new assignments and responsibilities; supervisors have changed crews – make contact with your people. Designate points of contact and / or phone #'s
- * **AIR OPERATIONS** – maintain good **communications** with other ground units and aircraft in your area. Ground crews must maintain a safe distance (200' in brush or 400' in timber) during retardant drops for not only personal safety, but to allow the pilot an opportunity to do his job in a safe and effective manner. Be aware of non-incident personnel during air-ops, especially if using heavy air tankers. Use air resources as lookouts when appropriate.
- ***FATIGUE/DEHYDRATION** – Take care of yourself by getting adequate rest and eating regularly. Drink plenty of clean water and electrolyte drinks like Gatorade (3:1 water: electrolyte ratio). Drink enough to urinate at least every 3 hours.
- * **STRUCTURAL PROTECTION/HAZARDOUS MATERIALS** – Utilize local fire departments. Review structure watch out situations in your Incident Response Pocket Guide. Remain aware of traffic congestion near fires. Identify utility lines, butane tanks and other HAZMAT.
- * **TRANSPORTATION** – When traveling to and from incidents – LIGHTS ON, USE SEATBELTS, & OBEY ALL TRAFFIC RULES. Don't allow fatigue to control your vehicle. Share driving responsibilities between licensed operators.**DRIVE DEFENSIVELY!!**

Watch Out Situation of the Day



5. UNINFORMED ON STRATEGY, TACTICS AND HAZARDS

Shane Barrow, SOF2 (t)

Look Up, Look Down, Look Around

- ***Fuel Characteristics** – Assess prior to beginning operations.
- ***Fuel Moisture** – Read daily shift plan and assess on site.
- ***Fuel Temperature** – Varies with exposure to direct sunlight.
- ***Terrain & Fuel Accumulations** – Scout prior to beginning operations and continuously during operations.
- ***Wind** – Measure, observe, feel and notice changes.
- ***Atmospheric Stability** – Observe.
- ***Fire Behavior** – Monitor constantly prior to and during operations.
- ***Safety** – Ask questions in unfamiliar situations. The only dumb question is the one you did not ask.

WILDLAND/URBAN INTERFACE WATCHOUTS

The primary consideration is to first assure firefighter and public safety. It is a must to assess potential fire behavior, ingress/egress routes, nature of the threat, hazardous materials, and available water supplies before engaging in the protection of any structures. The first step in conducting a safe operation is to assess whether the firefighting operations can be conducted safely.

● Consider the “Wildland/Urban Interface Watchouts” in completing a risk analysis for the urban interface area to be protected. Remember there are three categories of structures:

- Those that are not threatened.
- Those that are threatened.
- Those that have already been lost or too dangerous to protect.

● Wildland/Urban Interface Watchouts:

- Poor access and narrow, one-way roads. A rapidly spreading fire could trap apparatus and personnel before they can turn around or move away from the flames and smoke.
- Observe bridge limits. Exceeding bridge limits could lead to bridge failure with a resultant blocking of ingress/egress routes that could result in the loss of an escape route or loss of equipment.
- Inadequate water supply. Without a reserve supply of water, the fire can overtake an area before the fuels can be cleared away.
- Natural fuels are located 30 feet or closer to structures on level ground. Remember structures on slopes require greater clearance. Structures are located on canyon slopes or “chimneys” on slopes of 30% or more with continuous, flashy fuels. The resulting rate of spread of any fire in this terrain can quickly extend beyond control.
- Extreme fire behavior: Situations involving crowning, large flame heights and erratic fire behavior can extend in an unpredictable manner beyond the control of any number of personnel. Strong winds of 25+ MPH: Winds increase the chance of spotting over the heads of firefighters and trapping them between both fire areas. Winds also cause greater preheating of fuels in the path of a fire front.

● continued...

- The need to evacuate the public, livestock, pets, and/or animals. This critical activity can pull personnel from the firefighting activity and can distract attention from fire behavior at a time when the greatest alertness is needed.
- Propane and above ground fuel tanks that are next to wooden structures or close to vegetation
- Power lines and poles: What is their location in relation to the structures that are being protected? Watch for both overhead and downed power lines.
- Local citizens are attempting suppression activities. Lack of knowledge in fire suppression may lead to unsafe tactics.
- Airtanker retardant drops and helicopter bucket operations: Establish communications and keep fire personnel out of the drop zone.

MEDICAL PLAN	1. Incident Name	2. Date Prepared	3. Time Prepared	4. Operational Period			
	Tatum Gulf/Irwin Mill	11-23-16	1800	24 HRS			
6. Transportation							
A. Ambulance Services							
Name	Address	Phone		Paramedics Yes No			
Bartow Co. EMS	112 W Cherokee Ave #300, Cartersville, GA 30120	911/ (770) 387-5160		Y			
Gordon Co. EMS (ICP/Irwin Mill)	101 Professional Court, Calhoun GA 30701	911/(706)629-0911		Y			
Puckett Co. EMS (Tatum Gulf)	3760 Tramore Pointe Pkwy Austell, GA 30106	911/(423)778-7400		Y			
Whitfield County EMS	1105 Memorial Dr, Dalton, GA 30720	911/ (706) 278-9211		Y			
7. Hospitals							
Name	Address	Travel Time Air Ground		Phone	Helipad Yes No		Burn Center Yes No
Cartersville Medical Center	960 Joe Frank Harris Pkwy SE, Cartersville, GA 30120		10	(770) 382-1530	Y		N
Erlanger Health System (Level1)	975 E. #3d Str. Chattanooga, TN 37403	10-20	30	(423)778-7000	Y		N
Floyd Medical Center (Level 2)	304 Turner McCall Blvd. Rome, GA 30165	10	40	(706)509-5000	Y		N
Gordon Hospital	1035 Red Bud Ln. Calhoun, GA	5	10	(706)629-2895	Y		N
Hamilton Medical Center	1200 Memorial Drive Dalton, GA 30722-1168		10	706-272-6000	Y		N
Wellstar Cobb	3950 Austell Rd, Austell, GA 30106	20-30	70	(706)863-9595	Y		Y
8. Urgent Care/Walk-in Clinics							
AFC Urgent Care	1521 Gunbarrel Rd Ste. 103 Chattanooga, TN 37421 M-F 8-8 S&S 8-5		30	(423)531-0911	N		N
Gordon Urgent Care	100 Hospital Dr, Calhoun, GA 30701 M-F 8-6 S&S 8-5		10	(706)602-8200	N		N
Primary Health Care Center	13570 N Main St, Trenton, GA 30752 M-W 8-6 T&F 8-5 Sat. 9-3		20	(706)956-2665	N		N
Emergency Procedures							
<p>The first person to arrive to the accident or injury notifies his/her immediate supervisor and begin to assist without endangering themselves. DO NOT move trauma patients unless their safety is threatened. Provide incoming personnel with any hazard(s) upon approach and remove or mitigate original hazard(s). Use IRPG and attached 9 Line for Transport and Treatment protocol.</p> <p>Any person may declare a medical emergency; V Fire 21 will be monitored for Medical however any TAC or Command channel may be utilized. Attached is 9 Line Medical Incident Report to be followed transport priority. Follow IRPG ppg.99-109 (pink) for Emergency Care Guidelines.</p> <p>Landing Zones: (Irwin Mill Fire) 34 25' 52.53" N 84 41" 33.90" W (Tatum Gulf) 34 42' 27.11" N 85 29' 43.61" W</p>							
Prepared by (Medical Unit Leader)				10. Reviewed by (Safety Officer)			
Robert C. Rogers, MEDL (t)				Shane Barrow, SOFR			

Medical Incident Report

FOR ALL MEDICAL EMERGENCIES: IDENTIFY ON SCENE INCIDENT COMMANDER BY NAME AND POSITION AND ANNOUNCE "MEDICAL EMERGENCY" TO INITIATE RESPONSE FROM IMT COMMUNICATIONS/DISPATCH.

Use items one through nine to communicate situation to communications/dispatch.

1. CONTACT COMMUNICATIONS/DISPATCH

Ex: "Communications, Div. Alpha. Stand-by for Priority Medical Incident Report." (If life threatening request designated frequency be cleared for emergency traffic.)

2. INCIDENT STATUS: Provide incident summary and command structure.

Nature of Injury/Illness		<i>Describe the injury (Ex: Broken leg with bleeding)</i>
Incident Name		<i>Geographic Name + "Medical" (Ex: Trout Meadow Medical)</i>
Incident Commander		<i>Name of IC</i>
Patient Care		<i>Name of Care Provider (Ex: EMT Smith)</i>

3. INITIAL PATIENT ASSESSMENT: Complete this section for each patient. This is only a brief, initial assessment. Provide additional patient info after completing this 9 Line Report.

Number of Patients:	Male / Female	Age:	Weight:
Conscious? <input type="checkbox"/> YES <input type="checkbox"/> NO = MEDEVAC!			
Breathing? <input type="checkbox"/> YES <input type="checkbox"/> NO = MEDEVAC!			
Mechanism of Injury: <i>What caused the injury?</i>			
Lat/Long (Datum WGS84) <i>Ex: N 40° 42.45' x W 123° 03.24'</i>			

4. SEVERITY OF EMERGENCY, TRANSPORT PRIORITY

SEVERITY	TRANSPORT PRIORITY
<input type="checkbox"/> URGENT-RED Life threatening injury or illness. <i>Ex: Unconscious, difficulty breathing, bleeding severely, 2° – 3° burns more than 4 palm sizes, heat stroke, disoriented.</i>	Ambulance or MEDEVAC helicopter. Evacuation need is IMMEDIATE.
<input type="checkbox"/> PRIORITY-YELLOW Serious Injury or illness. <i>Ex: Significant trauma, not able to walk, 2° – 3° burns not more than 1-2 palm sizes.</i>	Ambulance or consider air transport if at remote location. Evacuation may be DELAYED.
<input type="checkbox"/> ROUTINE-GREEN Not a life threatening injury or illness. <i>Ex: Sprains, strains, minor heat-related illness.</i>	Non-Emergency. Evacuation considered Routine of Convenience.

5. TRANSPORT PLAN:

Air Transport: (Agency Aircraft Preferred)

<input type="checkbox"/> Helispot	<input type="checkbox"/> Short-haul/Hoist	<input type="checkbox"/> Life Flight	<input type="checkbox"/> Other
-----------------------------------	---	--------------------------------------	--------------------------------

Ground Transport:

<input type="checkbox"/> Self-Extract	<input type="checkbox"/> Carry-Out	<input type="checkbox"/> Ambulance	<input type="checkbox"/> Other
---------------------------------------	------------------------------------	------------------------------------	--------------------------------

6. ADDITIONAL RESOURCE/EQUIPMENT NEEDS:

<input type="checkbox"/> Paramedic/EMT(s)	<input type="checkbox"/> Crew(s)	<input type="checkbox"/> SKED/Backboard/C-Collar
<input type="checkbox"/> Burn Sheet(s)	<input type="checkbox"/> Oxygen	<input type="checkbox"/> Trauma Bag
<input type="checkbox"/> Medication(s)	<input type="checkbox"/> IV/Fluid(s)	<input type="checkbox"/> Cardiac Monitor/AED
<input type="checkbox"/> Other (i.e. splints, rope rescue, wheeled litter)		

7. COMMUNICATIONS:

Function	Channel Name/Number	Receive (Rx)	Tone/NAC *	Transmit (Tx)	Tone/NAC *
<i>Ex: Command</i>	<i>Forest Rpt, Ch. 2</i>	<i>168.3250</i>	<i>110.9</i>	<i>171.4325</i>	<i>110.9</i>
COMMAND					
AIR-TO-GRND					
TACTICAL					

*(NAC for digital radio system)

8. EVACUATION LOCATION:

Lat/Long (Datum WGS84) <i>EX: N 40 42.45' x W 123 03.24'</i>	
Patient's ETA to Evacuation Location:	
Helispot/Extraction Size and Hazards:	

9. CONTINGENCY:

Considerations: <i>If primary options fail, what actions can be implemented in conjunction with primary evacuation method? Be thinking ahead...</i>	REMEMBER: Confirm ETA's of resources ordered Act according to your level of training Be Alert. Keep Calm. Think Clearly. Act Decisively.
--	--

INCIDENT ACTION PLAN SAFETY ANALYSIS										1. Incident Name Tatum Gulf / Coosa Fires		2. Date 11/25/2016		3. Time Shift 800 24 hrs.						
LCES* Analysis of Tactical Applications										Other Risk Analysis										
Divisions	In direct Fireline	Strategic Firing Operations	Powerlines	Road Conditions	Frontal Assault	Night Operations	Extreme Conditions	ATV / UTV Use	Fatigue / Hydration	Wildlife, Insects	LCES Mitigations	Snags / Falling Trees	Traffic/Driving	Communications	Structure Protection	Hunters	Multi-aircraft	Other Risk Mitigations		
East	1, 2, 3, 4, 5, 7, 8, 10, 14	1, 2, 3, 4, 5, 7, 8, 10, 15	2, 6, 11, 15, 17	12, 20, 25	1, 2, 3, 4, 5, 7, 8, 14	2, 3, 5, 8, 11, 14, 21	7, 10	26	16, 18, 21	2, 22	1. Establish & maintain LCES. Report LCES checks twice daily to DIVS on line & staggings. 2. Look UP, DOWN and AROUND 3. Post experienced Lookouts. Make sure LCES is in place and make known. 4. Use Aerial Resources as Lookout if available.	2, 6, 14, 18A	12, 17, 19, 20, 22	1, 3, 10, 14, 19, 24, 25	1, 2, 3, 4, 5, 8, 10, 11, 14, 15	27	14	16. Take adequate rest breaks and encourage to drink water NOW through briefings. 17. Defensive driving will be addressed in all briefings. 18. All personnel must meet the 2:1 work/rest ratio. Line supervisors and Safety will monitor closely. 18A. Keep spread out - don't bunch up; two sets of eyes are better than one; heads up for windy conditions; stay clear of all air op's; consider green trees as hazards also; watch for burned out root systems, especially days into the incident		
	West	1, 2, 3, 4, 5, 7, 8, 10, 14	1, 2, 3, 4, 5, 7, 8, 10, 15	2, 6, 11, 15, 17	12, 20	1, 2, 3, 4, 5, 7, 8, 14	2, 3, 5, 8, 11, 14, 21	7, 10	26	16, 18, 21	2, 22	5. Flag escape routes on right side of escape route facing outward. Create new escape routes as you progress and identify Safety Zones on the ground and maps. 6. Identify, mark & mitigate. 7. Operations will monitor Wx until someone else is in place 8. Ensure Fireline is Anchored to black or manmade/natural barrier.	2, 6, 14, 18a	12, 17, 19, 20, 22, 25	1, 3, 10, 14, 19, 24, 25	1, 2, 3, 4, 5, 8, 10, 11, 14, 15	27	14	19. Ensure Traffic Planning is safe and enforced. Heed Defensive Driving techniques noted in Safety Messages. 20. Relocate staggings area when driving conditions warrant. 21. Use spotter when backing vehicle(s). 22. Use protective spray with deet on skin (Not on Nomex), permethrin can be used on nomex clothing	
		IA / Mop-up	1, 3, 4, 5, 7, 8, 10, 14	1, 2, 3, 4, 5, 7, 8, 10, 15	2, 6, 11, 15, 17	12, 20	1, 2, 3, 4, 5, 7, 8, 14	2, 3, 5, 8, 11, 14, 21	7, 10	26	16, 18, 21	2, 22	10. Keep Firefighters informed of any changes in predicted weather, consider at least a two day weather pattern when planning Strategic Firing operations. 11. Refer to IRPG, pg. 12 on Power Line Hazards. 12. Observe all traffic signals and speed limits. Drive with lights on. 14. Ensure GOOD tailgate briefings with resources unable to attend Operational Briefing (Include Ops, Logs, Fin & Plans info.).	2, 6, 14, 18a	12, 17, 19, 20, 22, 25	1, 3, 10, 14, 19, 24, 25	1, 2, 3, 4, 5, 8, 10, 11, 14, 15	27	14	23. Establish smoke/fog signs on roadways. Coordinate with Department of Transportation. 24. Follow established communication plan, flight follow through dispatch 25. Maintain comm's with others while traversing main access roads. Keep headlights and emergency lights on. 26. Adequate training and experience on the machine you are operating. Utilize approved and appropriate size baffled water tanks only. Back up extreme slope or find alternate route.
													15. Scout ahead of tractor operations to avoid making contact with power poles and guide wires when tying into roads.							27. Bright clothes, notify leader if you see hunters, avoid contact
Prepared by Shane Barrow, SOF2 (t)																				

Turn in PINK and BLUE copies to FINANCE

OPTIONAL FORM 297 (Rev. 7-90) USDA/USDI
NSN 7540-01-119-5628 50297-102

17. CONTRACTOR'S OR AUTHORIZED AGENT'S SIGNATURE <i>Operator Sign Here</i>		18. GOVERNMENT OFFICER'S SIGNATURE <i>Supv Sign Here</i>		19. DATE SIGNED <i>11/16/16</i>	
16. INVOICE POSTED BY (Recorder's Initials) <i>Finance use only</i>					
15. EQUIPMENT STATUS <input type="checkbox"/> a. Inspected and under agreement <input type="checkbox"/> b. Released by Government <input type="checkbox"/> c. Withdrawn by Contractor					
14. REMARKS (released, down time and cause, problems, etc.) <i>Type 6 + 7 Engines</i>		13. EQUIPMENT USE <i>Document Pump usage hours</i>		12. DATE <i>11/16/16</i>	
11. OPERATING SUPPLIES FURNISHED BY <input type="checkbox"/> GOVERNMENT <input type="checkbox"/> CONTRACTOR (wet)		10. LICENSE NUMBER <i>GV3A17B</i>		9. SERIAL NUMBER <i>GV420-2006</i>	
8. OPERATOR FURNISHED BY <input type="checkbox"/> GOVERNMENT <input type="checkbox"/> CONTRACTOR		7. EQUIPMENT MODEL <i>F450 Type 7</i>		6. EQUIPMENT MAKE <i>Ford</i>	
5. OPERATOR (name) <i>Your Name</i>		4. INCIDENT NUMBER <i>420870966</i>		3. INCIDENT OR PROJECT NAME <i>Tatum Gulf</i>	
2. CONTRACTOR (name) <i>GTC Bulloch 31</i>		1. AGREEMENT NUMBER <i>420870966</i>		1. AGREEMENT NUMBER	

EMERGENCY EQUIPMENT SHIFT TICKET
NOTE: The responsible Government Officer will update this form each day or shift and make initial and final equipment inspections.

E#

FINANCE

CREW TIME REPORT

(1) CREW NAME <i>Finance</i>	(2) CREW NUMBER <i>0-123.4</i>
(3) PERSON RESPONSIBLE FOR FIRE <i>GAS/60003</i>	(4) FIRE NAME <i>Tatum Gulf</i>
(5) FIRE NUMBER <i>420870966</i>	(6) DATE <i>11/16/16</i>
(7) NAME OF EMPLOYEE <i>Smokey bear</i>	(8) CLASSIFICATION <i>07001200</i>
(9) ON	(10) OFF
(11) ON	(12) OFF
(13) ON	(14) OFF
(15) ON	(16) OFF
(17) ON	(18) OFF
(19) ON	(20) OFF
(21) ON	(22) OFF
(23) ON	(24) OFF
(25) ON	(26) OFF
(27) ON	(28) OFF
(29) ON	(30) OFF
(31) ON	(32) OFF
(33) ON	(34) OFF
(35) ON	(36) OFF
(37) ON	(38) OFF
(39) ON	(40) OFF
(41) ON	(42) OFF
(43) ON	(44) OFF
(45) ON	(46) OFF
(47) ON	(48) OFF
(49) ON	(50) OFF
(51) ON	(52) OFF
(53) ON	(54) OFF
(55) ON	(56) OFF
(57) ON	(58) OFF
(59) ON	(60) OFF
(61) ON	(62) OFF
(63) ON	(64) OFF
(65) ON	(66) OFF
(67) ON	(68) OFF
(69) ON	(70) OFF
(71) ON	(72) OFF
(73) ON	(74) OFF
(75) ON	(76) OFF
(77) ON	(78) OFF
(79) ON	(80) OFF
(81) ON	(82) OFF
(83) ON	(84) OFF
(85) ON	(86) OFF
(87) ON	(88) OFF
(89) ON	(90) OFF
(91) ON	(92) OFF
(93) ON	(94) OFF
(95) ON	(96) OFF
(97) ON	(98) OFF
(99) ON	(100) OFF

(11) REMARKS
Enter Fire name here

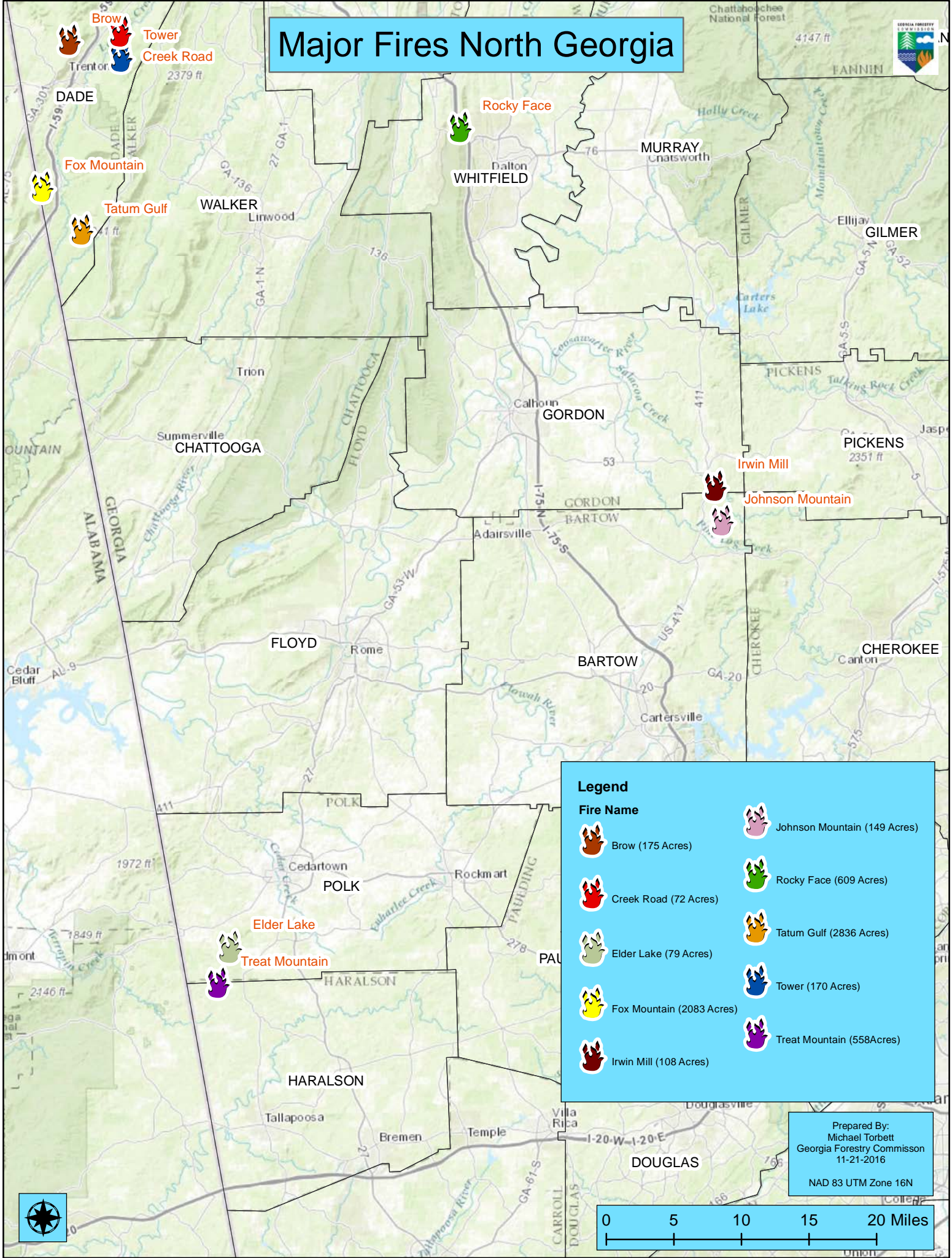
(12) OFFICER-IN-CHARGE (Signature)
Supv. Signs

(13) TITLE (Officer-in-Charge)

(14) NAME (Person Posting to Emergency Time Report)

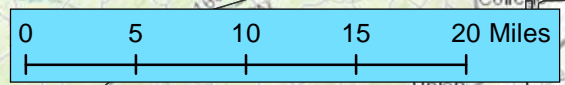
(15) DATE

Major Fires North Georgia



Legend	
Fire Name	
	Brow (175 Acres)
	Creek Road (72 Acres)
	Elder Lake (79 Acres)
	Fox Mountain (2083 Acres)
	Irwin Mill (108 Acres)
	Johnson Mountain (149 Acres)
	Rocky Face (609 Acres)
	Tatum Gulf (2836 Acres)
	Tower (170 Acres)
	Treat Mountain (558 Acres)

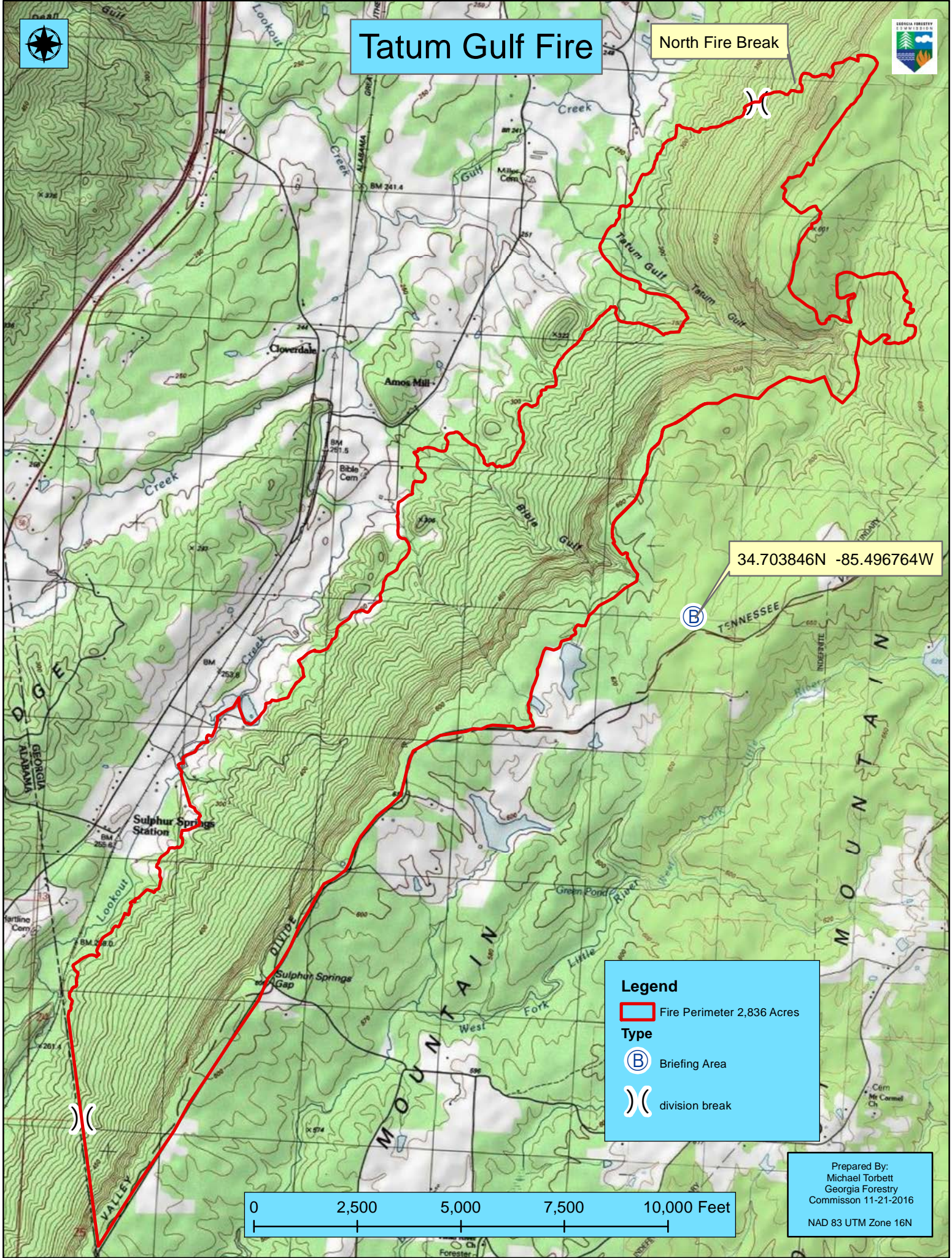
Prepared By:
 Michael Torbett
 Georgia Forestry Commission
 11-21-2016
 NAD 83 UTM Zone 16N





Tatum Gulf Fire

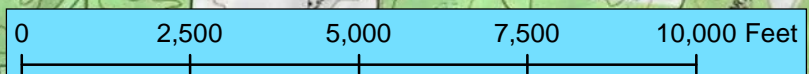
North Fire Break



34.703846N -85.496764W

Legend

- Fire Perimeter 2,836 Acres
- Type**
- B Briefing Area
- X division break



Prepared By:
 Michael Torbett
 Georgia Forestry
 Commission 11-21-2016
 NAD 83 UTM Zone 16N

COOSA FIRES PHONE LIST

11/24/16

Incident Communication (Hours: 0800-2000)

AGENCY		OFFICIALS		OPERATIONS		
Kris Butler	706-676-0168	GFC Coosa West		Brent McCarty	229-938-8718	OSC2
Frank Sorrells	912-381-7503	GFC Protection		Blair Joiner	229-237-9026	OSC2 (t)
Tim Reeve	404-275-6277	EMA Area 6		DIVISIONS		
Sammy Young		GSP		Troy Helms	478-718-7371	DIVS Tatum Gulf
				Chris Buchanan	478-550-2862	DIVS Holding Group
				Jason Squires	229-563-3959	DIVS Holding Group
COMMAND - IC				AIR OPERATIONS		
Trent Ingram	229-726-0285	IC		Clay Chatham	706-224-5155	
SAFETY OFFICERS				Georgia DNR		
Shane Barrow	706-699-2412	SOF2		Jeff Galloway	404-520-3540	DNR IC
Phil Dalenberg	912 515-4156	SOF		Don McGowan	404-987-4369	DNR Ops
INFORMATION				David Reed	706-934-4617	Leader Holding Group 1
Byron Haire	912-536-9352	PIO		James Keener	404-252-4711	LE Holding Group 2
Land line	912-515-9203			Ben Cunningham	706-252-4711	LE Holding Group 1
DISPATCH				RAILROADS		
Central Response	800-GA-TREES	Hit 1				
LOGISTICS						
Chuck Water	404-276-1572	DNR				
Tom Lambert	229-343-0838	LSC2				
Rachel Saunders		Supply				
PLANNING						
Keith Murphy	706-318-2967	RESL				
Chuck Norvell	678-314-9824	DEMOB/SCKN				
Rusty Brown	478-9736231	CTSP				
FINANCE						
Teresa Kregl	229-344-1664	FSC3(t)				
Penny Brown	478-808-7824	PTRC				
FEDERAL				COUNTY		
		Federal		Alex Case	706-657-4111	Dade County Emergency Services
				Ted Rumley- Chrm.	423-667-8999	Dade County Commissioners
STATE				Ray Cross	706-657-3233	Dade County Sheriff
		State		Ansel Smith	423-364-9993	Dade County Emergency Services
Vicky Edge	706-270-4568	GFC Gordon/Murray Unit				
Chuck Arnold	423-802-6507	GFC Whitfield Unit				
Mark Munns	706-388-0133	GFC Bartow Unit				
Heath Morton	423-240-7509	GFC Dade Unit				
Denise Croker	770-548-8092	GFC Polk/Paulding Unit				
Darrel Jackson	706-676-6842	GFC Walker Unit				
Mike Brunson	706-266-4244	GFC Chattooga/Floyd Unit				
Seth Pierce	423-802-6524	GFC Gilmer/Pickens Unt				
Tony Page	770-891-4545	GFC Dawson Forest				
Sherri Munns	770-547-8328	Coosa DAA (West)				
Gail Murray	770-531-6043	Coosa DAA (East)				
Kris Butler	706-676-0168	Coosa ADM (West)				
Shawn Alexander	678-897-9137	Coosa ADM (East)		Georgia State Patrol	770-387-3702	
Ken Masten	770-530-6548	Coosa DM				



Nathan Deal
Governor

Robert D. Farris
Director

Board of Commissioners:

Wesley Langdale, Chairman
Valdosta

Jimmy Allen
Chula

Jim L. Gillis, Jr.
Soperton

Robert Pollard
Appling

W. Earl Smith
Greensboro

Larry Spillers
Barnesville

H. G. Yeomans
Swainsboro

**INCIDENT
MANAGEMENT**
T E A M

GEORGIA FORESTRY
COMMISSION



5645 Riggins Mill Road
Dry Branch, GA 31020
P. 478-751-3500
F. 478-751-3465

An Equal Opportunity
Employer & Service Provider

Bartow County Unit

Office Information	
Office Phone	770-387-3750
Office Fax	770-387-4805
Office Address	3700 Hwy 140 E
Office City/State/Zip	Rydal GA 30171

Whitfield County Unit

Office Information	
Office Phone	706-935-3162
Office Fax	706-272-2944
Office Address	2517 Cleveland Highway
Office City/State/Zip	Dalton, GA 30720

Chattooga County Unit

Office Information	
Office Phone	706-295-6020
Office Fax	706-802-5315
Office Address	141 Wilshire Road
Office City/State/Zip	Rome, GA 30161

Dade County Unit

Office Information	
Office Phone	706-657-4211
Office Fax	706-657-2876
Office Address	165 Robert Ryan Jr. Road
Office City/State/Zip	Trenton, GA 30752



Nathan Deal
Governor

Robert D. Farris
Director

Board of Commissioners:

Wesley Langdale, Chairman
Valdosta

Jimmy Allen
Chula

Jim L. Gillis, Jr.
Soperton

Robert Pollard
Appling

W. Earl Smith
Greensboro

Larry Spillers
Barnesville

H. G. Yeomans
Swainsboro

**INCIDENT
MANAGEMENT**
T E A M



5645 Riggins Mill Road
Dry Branch, GA 31020
P. 478-751-3500
F. 478-751-3465

An Equal Opportunity
Employer & Service Provider

Gilmer County Unit

Office Information	
Office Phone	706-635-2363
Office Fax	706-636-2363
Office Address	25 Ellington Road
Office City/State/Zip	Ellijay, GA 30540

Gordon County Unit

Office Information	
Office Phone	706-624-1432
Office Fax	706-624-1372
Office Address	311 Old Fairmount Hwy SE
Office City/State/Zip	Calhoun, GA 30701

Murray County Unit

Office Information	
Office Phone	706-695-3422
Office Fax	706-695-7352
Office Address	705 Old Dalton Ellijay Road
Office City/State/Zip	Chatsworth, GA 30705

Polk County Unit

Office Information	
Office Phone	770-749-2251
Office Fax	770-749-4407
Office Address	1735 Rockmart Highway
Office City/State/Zip	Cedartown, GA 30125

**INCIDENT
MANAGEMENT**
T E A M



5645 Riggins Mill Road
Dry Branch, GA 31020
P. 478-751-3500
F. 478-751-3465

*An Equal Opportunity
Employer & Service Provider*



Nathan Deal
Governor

Robert D. Farris
Director

Board of Commissioners:

Wesley Langdale, Chairman
Valdosta

Jimmy Allen
Chula

Jim L. Gillis, Jr.
Soperton

Robert Pollard
Appling

W. Earl Smith
Greensboro

Larry Spillers
Barnesville

H. G. Yeomans
Swainsboro

Walker County Unit

Office Information

Office Phone

706-638-5556

Office Fax

706-638-9491

Office Address

207 Foster Blvd.

Office City/State/Zip

Lafayette, GA 30728