

Tatum Gulf & Coosa Fires FY-17

I N C I D E N T
M A N A G E M E N T
T E A M

**GEORGIA FORESTRY
COMMISSION**



Sunday November 27th

GA-GAS-160003



GEORGIA FORESTRY
COMMISSION



Letter from GFC Incident Commander:

To: All Tatum Gulf and Coosa Complex Incident Personnel:

As A Georgia Forestry Commission Type 2 Incident Commander, I am committed to a policy of “zero tolerance” of inappropriate behavior during incident operations. Any form of harassment, discriminatory practices, or disrespectful behavior will not be tolerated.

Guidelines on in-appropriate behavior both “on Duty” and “off Duty” while assigned are addressed within each agencies policies. Our Team expects all incident personnel to follow established government policies for behavior along with all Illegal drug and alcohol directives.

Our Incident Management Team endorses and supports an attitude of mutual respect for all personnel and the public we serve.

We expect a strong work ethic and an attitude of Safety at all times!
Sincerely,

/s/ Trent Ingram
Incident Commander
Georgia Forestry Commission Type 2 Incident Management Team

INCIDENT OBJECTIVES

1. Incident Name

2. Date Prepared

3. Time Prepared

**Tatum Fires
GA-GAS 160003****11-26-16****1900**

4. Operational Period: 0800-2000

5. General Control Objectives For The Incident

Objectives for the Incident:

- Provide for safety of incident personnel and public in all incident operations.
- Provide for structure protection and point source protections for values of risk.
- Maintain a positive working relationship with all adjacent landowners, cooperators, Stakeholders, State and Federal partners.
- *Provide time management and IA suppression in the Coosa West District.*
- In cooperation with local land owners and communities, use full suppression strategies and tactics to minimize damage to private lands.
- Protect all cultural and archeological sites and structures in the area.
- Manage the fires cost-effectively consistent with the values at risk.

Control Objectives:

Tatum Gulf Fire:

Keep the fire east of the Alabama Great Southern Railroad, west of the Tatum Gulf Road/West Bluff Road/Crook View Road, south of Forester Gulch.

Coosa Complex Fires:

Keep the fires within the containment lines by refreshing current fire lines, mop up when needed and direct attack on fire outside of the containment lines.

Provide IA Suppression within Coosa West while giving local resources time off.

6. **Weather Discussion – See Weather R/x**7. **General Safety Message****See detailed Safety Message within the IAP**

8. ATTACHEMENTS (X IF ATTACHED)

- | | | |
|---|--|---|
| <input checked="" type="checkbox"/> Organization List - ICS 203 | <input checked="" type="checkbox"/> Medical Plan - ICS 206 | <input checked="" type="checkbox"/> Demob Planner |
| <input checked="" type="checkbox"/> Division Assignment Lists - ICS 204 | <input checked="" type="checkbox"/> Safety Message | <input checked="" type="checkbox"/> Maps |
| <input checked="" type="checkbox"/> Communications Plan - ICS 205 | <input checked="" type="checkbox"/> Air Ops Plan ICS 220 | [] |

9. Prepared By (Planning Section Chief)

10. Approved By (Incident Commander)

/s/ Keith Murphy**/s/ Trent Ingram**

ORGANIZATION ASSIGNMENT LIST		9. Operations Section		
1. Incident Name Coosa Fires FY-17		Chief	Brent McCarty 11/28 Sammy Young GSP Don McGowan DNR	
		a. Branch – Divisions/Groups		
2. Date 11/25/2016	3. Time 1930	Division	A	Chris Buchanan 11/29
		Division	B	Jason Squires
4. Operational Period 11/26/2008 0800-2000		Division	C	Troy Helms 11/28
		Division	D	Todd Milam
5. Incident Commander and Staff				
Incident Commander	Trent Ingram 11/28			
Deputy				
Safety Officer	Shane Barrow 11/28 Phil Dalenburg 11/28		Division	Tatum Gulf Jason Squires
Information Officer				
Information Officer	Hannah Cowart 12/3			
Liaison Officer				
6. Agency Reps				
Agency	Name		c. Branch - Divisions/Groups	
GFC Protection	Frank Sorrells		Division	Holding 1 Jason Squires 12/1
GFC Coosa District	Ken Masten		Division	Holding 2 Brent McCarty
GFC Coosa District	Kris Butler			
GEMA	Tim Reeves			
Dade Co.	Alex Case			
GA DNR	Capt Jeff Galloway		d. Branch – Divisions/Groups	
7. Planning Section				
Chief	Keith Murphy 11/29		Division	
Resources Unit			Division	
Situation Unit			Division	
SCKN/DMOB	Chuck Norvell 12/2			
GISS	Michael Torbett 11/28			
Computer Tech			d. Air Operations Branch	
Documentation			AOBD	Clay Chatham
Training Specialist			Helibase Mgr.	
Resource Advisor			ASGS	
FOBS	Phillips 11/28 McGinnis 11/28		Air Attack Sup.	
10. Finance Section				
		Chief	Penny Brown 11/28	
		Deputy		
		Time Unit		
		Personnel Time		
		Equipment Time		
		Cost Unit		
		Procurement	Joe Fincer	
		Procurement		
		Comp/Claims		
		Prepared by (Resource Unit Leader)		
		Keith Murphy		

Forestry Weather & Smoke Management Forecast
From Georgia Forestry Commission
Issued at: 1230 PM EST Sat 26 Nov 2016

District 1 (Coosa-Northwest)					
CAUTION ITEMS					
Chatsworth, Ga ; Dallas, Ga ; is forecast to have a Class 5 day today!					
Dawsonville, Ga ; is forecast to have a Class 4 day today!					
Relative Humidity is below 25% in 2ND period					
Wind speed increases in 4TH period					
Occasional Gusts in 4TH period					
Occasional Gusts in 5TH period					
	Tonight	Tomorrow	Sunday Night	Monday	Monday Night
Sky Condition	Clear	Sunny	Partly Cloudy	Mostly Cloudy	Cloudy
Temperature	25 To 29	60 To 64	39 To 43	60 To 64	48 To 52
Relative Humidity	95 To 100	24 To 27	69 To 74	46 To 51	95 To 100
Wind Chill Temperature	15 To 23	----	32 To 38	----	----
Probability of Precipitation	None	None	None	None	80
Shower Coverage	None	None	None	None	Numerous
Precipitation Type	None	None	None	None	Moderate Rain
Precipitation Amount	None	None	None	None	1 To 2 Inches
Precipitation Duration	None	None	None	None	Around 8 Hours
Surface Wind (Open)	North 5- 8mph	South 5- 8mph	Southeast 6-10mph	Southeast 12-16mph Occasional Gusts	South 12-16mph Occasional Gusts
Wind Speed Increase Within Period	None	None	None	From 7 to 13mph	None
Canopy Wind	Variable 3-6mph	Variable 3-6mph	Southeast 5-8mph	Southeast 8-12mph	South 8-12mph
Smoke Dispersion Index	7(Poor)	55(Generally Good)	10(Poor)	61(Good)	19(Generally Poor)
Fog Potential	Slight	None	None	None	Moderate
Low Visibility Occurrence Risk Index	8(High)	1(Low)	3(Low)	1(Low)	6(Medium)
Mixing Height	10m 33ft	2371m 7777ft	542m 1778ft	1286m 4218ft	10m 33ft
Transport Wind Speed	5m/s 11mph	5m/s 11mph	7m/s 16mph	10m/s 22mph	9m/s 20mph
Turner & Atmosphere Tendency	5(Normal)	3(Normal)	5(Normal)	4(Normal)	4(Normal)
Plume Trajectory	South	North	Northwest	Northwest	North
Drying Potential	Low	Moderate	Low	Moderate	Low



Nathan Deal
Governor

Robert D. Farris
Director

Board of Commissioners:

Wesley Langdale, Chairman
Valdosta

Jimmy Allen
Chula

Jim L. Gillis, Jr.
Soperton

Robert Pollard
Appling

W. Earl Smith
Greensboro

Larry Spillers
Barnesville

H. G. Yeomans
Swainsboro

INCIDENT
MANAGEMENT
T E A M

GEORGIA FORESTRY
COMMISSION



5645 Riggins Mill Road
Dry Branch, GA 31020
P. 478-751-3500
F. 478-751-3465

An Equal Opportunity
Employer & Service Provider

Memorandum

To: All Resources

From: Trent Ingram

The Type 2 Team has not only been delegated with fire control responsibilities, but to do so while managing our overtime in the process. Considering this we have identified individuals with the highest comp time balances and will classify these resources as *Unavailable* and *Off & On-Call* which is defined below.

Unavailable: you are off duty and not subject to be called in during your Unavailable Period, which is defined as Monday through Monday.

Off & On-Call: you are off duty on comp time, but subject to be called in at any time and will need to carry your pager.

Our out of district resources will be repositioned throughout Coosa West to fill in where local resources are Unavailable or Off & On-Call.

We will re-evaluate this Monday to Monday after reviewing updated comp balances.

Thank you for your cooperation,

Trent Ingram

DIVISION ASSIGNMENT LIST		1. Branch		2. Division A			
3. Incident Name Coosa Fires FY-17		4. Operational Period Date: 11/27/16 Time:					
5. Operations Personnel							
Operations Chief	Brent McCarty	DIVS	Chris Buchanan				
Safety Officer	Shane Barrow/Carson Jones	Air Attack Supervisor	Clay Chatham				
Branch Director							
6. Resources Assigned this Period							
Strike Team/Task Force/ Resource Designator	Leader / Name / Designator	Num. Per.	Last Shift	Drop Off PT./Time	Pick Up PT./Time		
DOZ	Pike 70			Polk/Paulding			
ENG6	Glynn 86			Polk/Paulding			
ENG6	Tatnall 86			Whitfield/Catoosa			
DOZ	Austin Temple			OFF & On Call-Polk/Paulding			
DOZ	Taylor Willingham			Chattooga/Floyd			
DOZ	Chris Key			Chattooga/Floyd			
DOZ	Tim Sosbee			OFF & On Call-Chattooga/Floyd			
DOZ	Stacy Cantrell			Chattooga/Floyd			
DOZ	Dean Cornett			Unavailable			
PU/CR	Mike Brunson			OFF & On Call			
DOZ	Cornell Bryant			Unavailable			
DOZ	Nathan Oakes			Unavailable			
PU/CR	Denise Croker			OFF & On Call			
DOZ	Tim Jones			Unavailable			
DOZ	Bryan Rooks			Unavailable			
7. Control Operations - Chattooga/Floyd/Polk/Paulding							
8. Special Instructions							
9. Division/Group Communication Summary							
Function	Frequency	System	Channel	Function	Frequency	System	Channel
Command		KING NIFC		Logistics		KING NIFC	
Tactical Div/Group		KING NIFC		Air to Ground		KING NIFC	
Prepared by (Resource Unit Ldr.) Keith Murphy		Approved by (Planning Sect. Ch.) /s/Keith Murphy		Date November 26, 2016		Time 1930	

DIVISION ASSIGNMENT LIST				1. Branch		2. Division B	
3. Incident Name Coosa Fires FY-17				4. Operational Period Date: 11/27/16 Time:			
5. Operations Personnel							
Operations Chief		Brent McCarty		DIVS		Jason Squires	
Safety Officer		Phil Dalenburg		Air Attack Supervisor		Clay Chatham	
Branch Director							
6. Resources Assigned this Period							
Strike Team/Task Force/ Resource Designator		Leader / Name / Designator		Num. Per.	Last Shift	Drop Off PT./Time	Pick Up PT./Time
DOZ		Harris 71				Dade	
DOZ		Shoulderbone 71				Walker	
ENG6		Upson 86				Walker	
DOZ		Ted Rumley				OFF & On Call-Dade	
DOZ		Chris Henderson				OFF & On Call-Walker	
DOZ		Robert Dunn				Unavailable	
PU/CR		Heath Morton				Off & On Call	
DOZ		Kerry Phillips				Unavailable	
PU/CR		Darryl Jackson				OFF & On Call	
DOZ		Andrew Gamlen				OFF & On Call-Walker	
DOZ		Richard Ray				OFF & On Call-Walker	
DOZ		Stacy Cantrell				Unavailable	
7. Control Operations - Dade/Walker							
8. Special Instructions							
9. Division/Group Communication Summary							
Function		Frequency		System		Channel	
Command				KING NIFC			
Tactical Div/Group				KING NIFC			
				Logistics		KING NIFC	
				Air to Ground		KING NIFC	
Prepared by (Resource Unit Ldr.) Keith Murphy				Approved by (Planning Sect. Ch.) /s/Keith Murphy			
				Date November 26, 2016		Time 1930	

DIVISION ASSIGNMENT LIST			1. Branch		2. Division C		
3. Incident Name Coosa Fires FY-17			4. Operational Period Date: 11/27/16 Time:				
5. Operations Personnel							
Operations Chief		Brent McCarty		DIVS		Troy Helms	
Safety Officer		Shane Barrow/Carson Jones		Air Attack Supervisor		Clay Chatham	
Branch Director							
6. Resources Assigned this Period							
Strike Team/Task Force/ Resource Designator		Leader / Name / Designator		Num. Per.	Last Shift	Drop Off PT./Time	Pick Up PT./Time
DOZ		Houston 70				Whitfield	
DOZ		Seminole 71				Gilmer	
ENG6		Liberty 86				Whitfield	
DOZ		Ken Poteet				Whitfield	
DOZ		Kevin Cline				Gordon/Murray	
DOZ		Austin Roland				Gilmer/Pickens	
DOZ		Tony Keene				Gilmer/Pickens	
DOZ		Kenneth Harkins				OFF & On Call-Gordon/Murray	
PU/CR		Chuck Arnold				OFF & On Call	
DOZ		Jeremy Ridley				Unavailable	
PU/CR		Vicky Edge				Unavailable	
DOZ		Adam Greeson				Unavailable	
DOZ		Matt Rymer				Unavailable	
PU/CR		Seth Peirce				OFF & On Call	
DOZ		Stephen Richards				Unavailable	
DOZ		Steven Wells				Unavailable	
7. Control Operations - Catoosa/Whitfield/Gordon/Murray/Gilmer/Pickens							
8. Special Instructions							
9. Division/Group Communication Summary							
Function		Frequency		System		Channel	
Command				KING NIFC			
Tactical Div/Group				KING NIFC			
				Logistics		KING NIFC	
				Air to Ground		KING NIFC	
Prepared by (Resource Unit Ldr.) Keith Murphy			Approved by (Planning Sect. Ch.) /s/Keith Murphy			Date November 26, 2016	Time 1930

DIVISION ASSIGNMENT LIST		1. Branch		2. Division D			
3. Incident Name Coosa Fires FY-17		4. Operational Period Date: 11/27/16 Time:					
5. Operations Personnel							
Operations Chief	Brent McCarty	DIVS	Todd Milam				
Safety Officer	Shane Barrow/Carson Jones	Air Attack Supervisor	Clay Chatham				
Branch Director							
6. Resources Assigned this Period							
Strike Team/Task Force/ Resource Designator	Leader / Name / Designator	Num. Per.	Last Shift	Drop Off PT./Time	Pick Up PT./Time		
DOZ	Oglethorpe 71			Bartow/Cherokee			
ENG6	Randolph 86			Bartow/Cherokee			
DOZ	Patrick Floyd			On Call-Bartow/Cherokee			
PU/CR	Mark Munns			Unavailable			
DOZ	Silas Richey			Unavailable			
DOZ	Mason Turner			Unavailable			
7. Control Operations - Bartow/Cherokee/North Fulton							
8. Special Instructions							
9. Division/Group Communication Summary							
Function	Frequency	System	Channel	Function	Frequency	System	Channel
Command		KING NIFC		Logistics		KING NIFC	
Tactical Div/Group		KING NIFC		Air to Ground		KING NIFC	
Prepared by (Resource Unit Ldr.) Keith Murphy		Approved by (Planning Sect. Ch.) /s/Keith Murphy		Date November 26, 2016		Time 1930	

DIVISION ASSIGNMENT LIST				1. Branch		2. Division Holding Group 1	
3. Incident Name Coosa Fires FY17				4. Operational Period Date: 11/27/16 Time: 0800-2000			
5. Operations Personnel							
Operations Chief		Brent McCarty		DIVS		Jason Squires	
Safety Officer		Shane Barrow/Carson Jones		Air Attack Supervisor		Clay Chatham	
6. Resources Assigned this Period							
Strike Team/Task Force/ Resource Designator	Leader / Name / Designator			Num. Per.	Trans. Needed	Drop Off PT./Time	Pick Up PT./Time
UTV	Alan Isler			1	N	0800	2000
UTV	Jamie Dowd			1	N	0800	2000
UTV	Zack Brock			1	N	0800	2000
UTV	Brandon Baker			1	N	0800	2000
DNR LE	RFC. Roger McConkey			1	N	0800	2000
7. Control Operations							
<ul style="list-style-type: none"> - Monitor & patrol perimeter of fire on Brown, Fox Mountain, Creek Road and Tower. - Monitor leaf litter fall within the fireline and clean out breaks as needed with leaf blowers. 							
8. Special Instructions							
9. Division/Group Communication Summary							
Function	Frequency	System	Channel	Function	Frequency	System	Channel
Command		KING NIFC		Logistics		KING NIFC	
Tactical Div/Group		KING NIFC	Tac 1	Air to Ground	Rx 159.3900 Tx 159.3900	KING NIFC	
Prepared by (Resource Unit Ldr.) Keith Murphy		Approved by (Planning Sect. Ch.) /s/Keith Murphy			Date November 26, 2016		Time 1930

DIVISION ASSIGNMENT LIST			1. Branch		2. Division Holding Group 2		
3. Incident Name Coosa Fires FY17			4. Operational Period Date: 11/27/16 Time: 0800-2000				
5. Operations Personnel							
Operations Chief		Brent McCarty		Group			
Safety Officer		Shane Barrow/Carson Jones		Air Attack Supervisor		Clay Chatham	
6. Resources Assigned this Period							
Strike Team/Task Force/ Resource Designator		Leader / Name / Designator		Num. Per.	Trans. Needed	Drop Off PT./Time	Pick Up PT./Time
UTV		Chris Roberts		1	N	0800	2000
UTV		Forest Buckner		1	N	0800	2000
UTV		Mitch Bukner		1	N	0800	2000
UTV		Ashley Colston		1	N	0800	2000
DNR LE		Cap. Casey Jones		1	N	0800	2000
7. Control Operations - Pre-position in Calhoun & cover DIVS A, C, D, as needed. - Monitor & patrol perimeter on Rocky Fire, Johnson Fire & Treat Mountain Fire. - Monitor leaf litter fall within the fireline and clean out breaks as needed with leaf blowers.							
8. Special Instructions							
9. Division/Group Communication Summary							
Function	Frequency	System	Channel	Function	Frequency	System	Channel
Command		KING NIFC		Logistics		KING NIFC	
Tactical Div/Group	Rx 159.3900 Tx 159.3900	KING NIFC	Tac 1	Air to Ground	168.350	KING NIFC	2
Prepared by (Resource Unit Ldr.) Keith Murphy		Approved by (Planning Sect. Ch.) /s/Keith Murphy			Date November 26, 2016		Time 1930

DIVISION ASSIGNMENT LIST			1. Branch Dade		2. Division Tatum Gulf		
3. Incident Name Tatum Gulf			4. Operational Period Date: 11/27/16 Time: 0800-2000				
5. Operations Personnel							
Operations Chief		Brent McCarty		DIVS		Jason Squires	
Safety Officer		Phil Dalenburg		Air Attack Supervisor		Clay Chatham	
6. Resources Assigned this Period							
Strike Team/Task Force/ Resource Designator	Leader / Name / Designator			Num. Per.	Last Shift	Drop Off PT./Time	Pick Up PT./Time
TFLD	Steve Campbell			1	11/30	0800	2000
Bryan 86 ENG6 E-123	Hazard/Lane			2	11/26	0800	2000
Ben Hill 86 ENG6 E-126	Brannen/Browning/Powell			3	11/26	0800	2000
Oconee PU	Woodard			1	11/26	0800	2000
Stewardship PU	Atkins			1	11/28	0800	2000
State Lands PU	Tucker			1	11/29	0800	2000
DNR ENG6	Floyd/Coleman			2	12/2	0800	2000
DNR ENG6	Harrington/Massie			2	12/2	0800	2000
UTV	Michael Staton			1	N	0800	2000
UTV	Nathan Weaver			1	N	0800	2000
UTV	Joe Murphy			1	N	0800	2000
UTV	Seth Thompson			1	N	0800	2000
7. Control Operations							
<ul style="list-style-type: none"> - Continue to monitor and prep any structures. - Monitor breaks and use leaf blowers and clean as needed. 							
8. Special Instructions							
Drive defensively; watch out for limbs, pedestrians and wildlife. Drink plenty of water and take frequent rest breaks. For any additional Resource Requests, Contact Brent McCarty (OSC2).							
9. Division/Group Communication Summary							
Function	Frequency	System	Channel	Function	Frequency	System	Channel
Command		KING NIFC	Dade Repeater	Logistics		KING NIFC	
Tactical Div/Group	Rx 159.3900 Tx 159.3900	KING NIFC	Tac 1	Air to Ground	168.350	KING NIFC	2
Prepared by (Resource Unit Ldr.) Keith Murphy		Approved by (Planning Sect. Ch.) /s/Keith Murphy			Date November 26, 2016		Time 1930

HEALTH AND SAFETY MESSAGE

SAFETY starts with ***YOU***

We are **ALL** accountable for **SAFE** behaviors

INCIDENT: Tatum Gulf / Coosa West IA Support

DATE: November 27, 2016

TIME: 0800

Major Hazards and Risks: New Assignments; Air Operations; Fatigue; Transportation; Structural Protection/Hazardous Materials

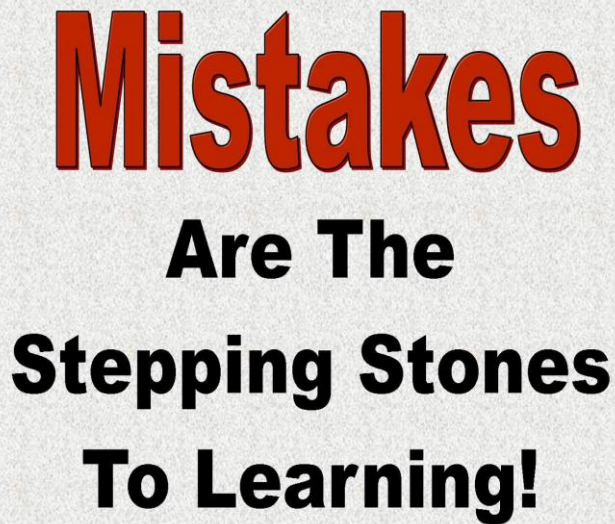
***NEW ASSIGNMENTS:** Give / get a good briefing about new assignments and responsibilities; supervisors have changed crews – make contact with your people. Designate points of contact and / or phone #'s

* **AIR OPERATIONS** – maintain good **communications** with other ground units and aircraft in your area. Ground crews must maintain a safe distance (200' in brush or 400' in timber) during retardant drops for not only personal safety, but to allow the pilot an opportunity to do his job in a safe and effective manner. Be aware of non-incident personnel during air-ops, especially if using heavy air tankers. Use air resources as lookouts when appropriate.

***FATIGUE/DEHYDRATION** – Take care of yourself by getting adequate rest and eating regularly. Drink plenty of clean water and electrolyte drinks like Gatorade (3:1 water: electrolyte ratio). Drink enough to urinate at least every 3 hours.

* **STRUCTURAL PROTECTION/HAZARDOUS MATERIALS** – Utilize local fire departments. Review structure watch out situations in your Incident Response Pocket Guide. Remain aware of traffic congestion near fires. Identify utility lines, butane tanks and other HAZMAT.

* **TRANSPORTATION** – When traveling to and from incidents – **LIGHTS ON, USE SEATBELTS, & OBEY ALL TRAFFIC RULES.** Don't allow fatigue to control your vehicle. Share driving responsibilities between licensed operators.**DRIVE DEFENSIVELY!!**



Mistakes
Are The
Stepping Stones
To Learning!

Shane Barrow, SOF2 (t)

Lessons Learned.....

- You are responsible for your own safety.
- Take care of your fellow firefighters.
- If you see something, say something.
- Question decisions if they have the potential to adversely affect your safety.
- Downhill line construction can be very dangerous.
- Be a student of fire.
- Know your fire orders, fire situations, and LCES (lookouts, communications, escape routes, and safety zones).
- Maintain situational awareness. Trust your instincts and be aware of your surroundings at all times.
- Leadership and safety start at the ground level.

INCIDENT ACTION PLAN SAFETY ANALYSIS										1. Incident Name Tatum Gulf / Coosa Fires FY17		2. Date 11/27/2016		3. Time Shift		800 0800-2000				
LCES* Analysis of Tactical Applications										Other Risk Analysis										
Divisions	Indirect Fireline	Strategic Firing Operations	Powerlines	Road Conditions	Frontal Assault	Night Operations	Extreme Conditions	ATV / UTV Use	Fatigue / Hydration	Wildlife, Insects	LCES Mitigations					Other Risk Mitigations				
											Snags / Falling Trees	Traffic/Driving	Communications	Structure Protection	Hunters	Unfamiliar area / equip				
A, B, C, D	1, 2, 3, 4, 5, 7, 8, 10, 14	1, 2, 3, 4, 5, 7, 8, 10, 15	2, 6, 11, 15, 17	12, 20, 25	1, 2, 3, 4, 5, 7, 8, 14	2, 3, 5, 8, 11, 14, 21	7, 10	26	16, 18, 21	2, 22	1. Establish & maintain LCES. Report LCES checks twice daily to DIVS on line & staging. 2. Look UP, DOWN and AROUND 3. Post experienced Lookouts. Make sure LCES is in place and make known. 4. Use Aerial Resources as Lookout if available.	2, 6, 14, 18A	12, 17, 19, 20, 22	1, 3, 10, 14, 24, 25	1, 2, 3, 4, 5, 8, 10, 11, 14, 15,	27	1, 2, 4, 24a, 26	16. Take adequate rest breaks and encourage to drink water NOW through briefings. 17. Defensive driving will be addressed in all briefings. 18. All personnel must meet the 2:1 work/rest ratio. Line supervisors and Safety will monitor closely. 18A. Keep spread out - don't bunch up; two sets of eyes are better than one; heads up for windy conditions; stay clear of all air op's; consider green trees as hazards also; watch for burned out root systems, especially days into the incident		
	Holding Groups	1, 2, 3, 4, 5, 7, 8, 10, 14	1, 2, 3, 4, 5, 7, 8, 10, 15	2, 6, 11, 15, 17	12, 20	1, 2, 3, 4, 5, 7, 8, 14	2, 3, 5, 8, 11, 14, 21	7, 10	26	16, 18, 21	2, 22	5. Flag escape routes on right side of escape route facing outward. Create new escape routes as you progress and identify Safety Zones on the ground and maps. 6. Identify, mark & mitigate. 7. Operations will monitor Wx until someone else is in place 8. Ensure Fireline is Anchored to black or manmade/natural barrier.	2, 6, 14, 18a	12, 17, 19, 20, 22, 25	1, 3, 10, 14, 24, 25	1, 2, 3, 4, 5, 8, 10, 11, 14, 15,	27	1, 2, 4, 24a, 26	19. Ensure Traffic Planning is safe and enforced. Heed Defensive Driving techniques noted in Safety Messages. 20. Relocate staging area when driving conditions warrant. 21. Use spotter when backing vehicle(s). 22. Use protective spray with deet on skin (Not on Nomex), permethrin can be used on nomex clothing	
		IA / Mop-uo	1, 3, 4, 5, 7, 8, 10, 14	1, 2, 3, 4, 5, 7, 8, 10, 15	2, 6, 11, 15, 17	12, 20	1, 2, 3, 4, 5, 7, 8, 14	2, 3, 5, 8, 11, 14, 21	7, 10	26	16, 18, 21	2, 22	10. Keep Firefighters informed of any changes in predicted weather, consider at least a two day weather pattern when planning Strategic Firing operations. 11. Refer to IRPG, pg. 12 on Power Line Hazards. 12. Observe all traffic signals and speed limits. Drive with lights on. 14. Ensure GOOD tailgate briefings with resources unable to attend Operational Briefing (Include Ops, Logs, Fin & Plans info.).	2, 6, 14, 18a	12, 17, 19, 20, 22, 25	1, 3, 10, 14, 24, 25	1, 2, 3, 4, 5, 8, 10, 11, 14, 15	27	1, 2, 4, 24a, 26	23. Establish smoke/fog signs on roadways. Coordinate with Department of Transportation. 24. Follow established communication plan, flight follow through dispatch 24a. Use local resources for guidance. Familiarize yourself with equipment prior to use 25. Maintain comm's with others while traversing main access roads. Keep headlights and emergency lights on. 26. Adequate training and experience on the machine you are operating. Utilize approved and appropriate size baffled water tanks only. Back up extreme slope or find alternate route.
													15. Scout ahead of tractor operations to avoid making contact with power poles and guide wires when tying into roads.							27. Bright clothes, notify leader if you see hunters, avoid contact
Prepared by Shane Barrow, SOF2 (t)																				

Georgia Forestry Radio Communications Instate Plan ICS-205			Group 01	Incident Name Coosa Fires FY 17			Date/Prepared 11/26/2016	Operational Period Date		
Ch #	Function	Channel Name	Assignment	RX Freq	RX DPL	TX Freq	TX DPL	Mode A,D or M	Remarks	
1	Tactical	Tac 1	Gfc Primary & Air to Ground ops	159.3900	CSQ	159.3900	156.7	A		
2	Tactical	Tac 2	Division	151.3475	D 031	151.3475	D 031	A		
3	Tactical	Tac 3	Division	159.2925	D 031	159.2925	D 031	A		
4	Tactical	VFire 21/Mutual Aid	Co-op & Emergency	154.2800	CSQ	154.2800	156.7	A	Move emergency traffic to this Channel	
5	Tactical	S.E. Compact	Division	159.2850	CSQ	159.2850	156.7	A		
6	Repeater	Dade	Command	159.2250	110.9	151.2800	123.0	A		
7	Repeater	Catoosa	Command	159.2250	110.9	151.2800	131.8	A		
8	Repeater	Chatooga	Command	159.2250	110.9	151.2800	114.8	A		
9	Repeater	Cherokee	Command	159.2250	110.9	151.2800	141.3	A		
10	Repeater	Floyd	Command	159.2250	110.9	151.2800	192.8	A		
11	Repeater	Fannin	Command	159.2250	110.9	151.2800	173.8	A		
12	Repeater	Gilmer	Command	159.2250	110.9	151.2800	100.0	A		
13	Repeater	Murray	Command	159.2250	110.9	151.2800	151.4	A		
14	Repeater	Polk	Command	159.2250	110.9	151.2800	186.2	A		
15	Repeater	Walker	Command	159.2250	110.9	151.2800	162.2	A		
16										
*	Southern LINC	GFC D1	ICP	#141	N/A	#141	N/A	D	GFC Command	
Prepared by (Communications Unit) K.Towe 478-308-4770					Notes: Use repeaters for Essential radio traffic, Utilize Tac Channels as much as possible There is a LINC in the GFC Command Trailer set on GFC D1 talk group					

GFC Radio Control Stations

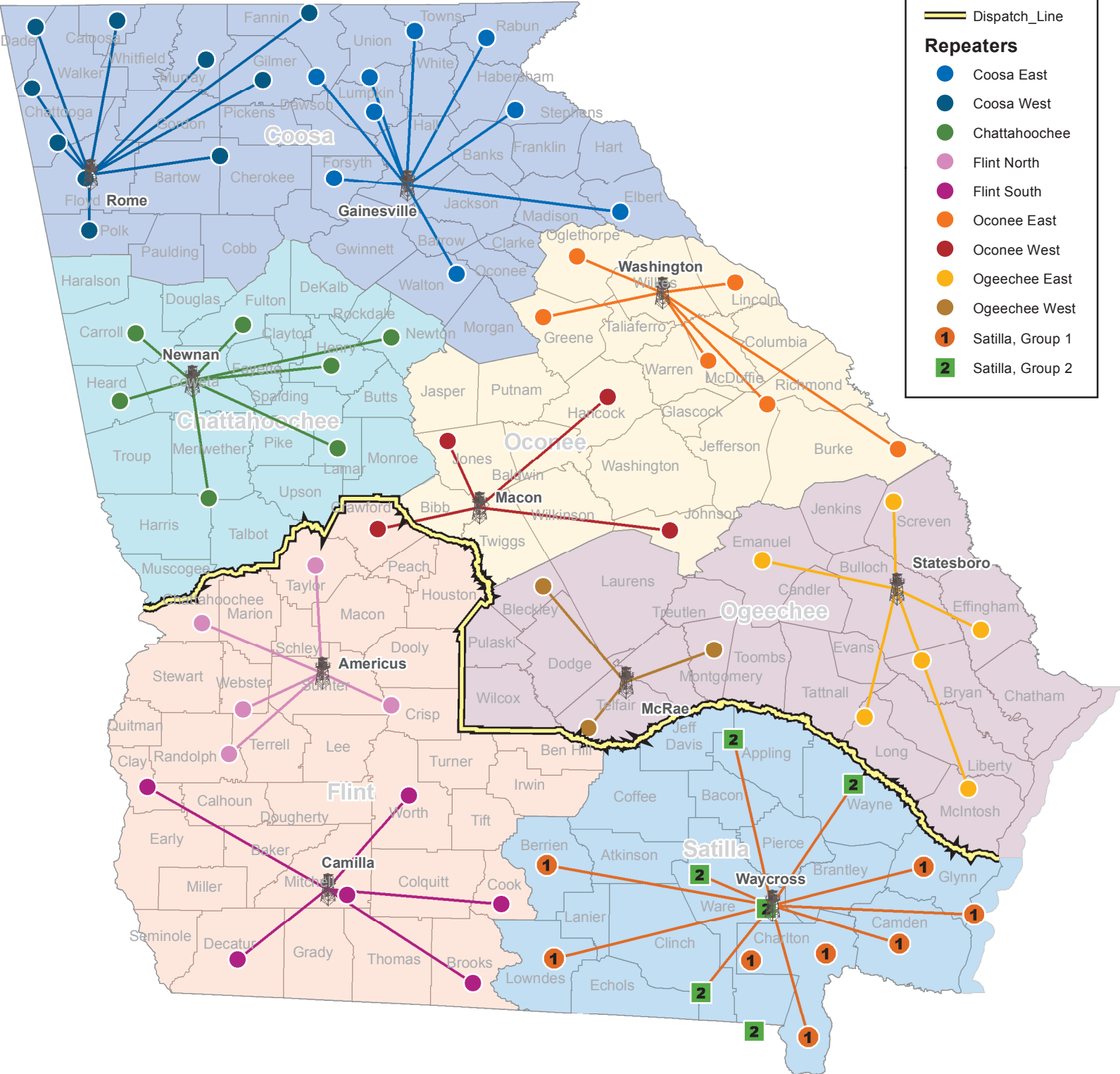


Control_Stations

Dispatch_Line

Repeaters

- Coosa East
- Coosa West
- Chattahoochee
- Flint North
- Flint South
- Oconee East
- Oconee West
- Ogeechee East
- Ogeechee West
- Satilla, Group 1
- Satilla, Group 2



MEDICAL PLAN	1. Incident Name	2. Date Prepared	3. Time Prepared	4. Operational Period			
	Tatum Gulf/Irwin Mill	11-26-16	1800	24 HRS			
6. Transportation							
A. Ambulance Services							
Name	Address	Phone		Paramedics Yes No			
Bartow Co. EMS	112 W Cherokee Ave #300, Cartersville, GA 30120	911/ (770) 387-5160		Y			
Gordon Co. EMS (ICP/Irwin Mill)	101 Professional Court, Calhoun GA 30701	911/(706)629-0911		Y			
Puckett Co. EMS (Tatum Gulf)	3760 Tramore Pointe Pkwy Austell, GA 30106	911/(423)778-7400		Y			
Whitfield County EMS	1105 Memorial Dr, Dalton, GA 30720	911/ (706) 278-9211		Y			
7. Hospitals							
Name	Address	Travel Time Air Ground		Phone	Helipad Yes No		Burn Center Yes No
Cartersville Medical Center	960 Joe Frank Harris Pkwy SE, Cartersville, GA 30120		10	(770) 382-1530	Y		N
Erlanger Health System (Level1)	975 E. #3d Str. Chattanooga, TN 37403	10-20	30	(423)778-7000	Y		N
Floyd Medical Center (Level 2)	304 Turner McCall Blvd. Rome, GA 30165	10	40	(706)509-5000	Y		N
Gordon Hospital	1035 Red Bud Ln. Calhoun, GA	5	10	(706)629-2895	Y		N
Hamilton Medical Center	1200 Memorial Drive Dalton, GA 30722-1168		10	706-272-6000	Y		N
Wellstar Cobb	3950 Austell Rd, Austell, GA 30106	20-30	70	(706)863-9595	Y		Y
8. Urgent Care/Walk-in Clinics							
AFC Urgent Care	1521 Gunbarrel Rd Ste. 103 Chattanooga, TN 37421 M-F 8-8 S&S 8-5		30	(423)531-0911	N		N
Gordon Urgent Care	100 Hospital Dr, Calhoun, GA 30701 M-F 8-6 S&S 8-5		10	(706)602-8200	N		N
Primary Health Care Center	13570 N Main St, Trenton, GA 30752 M-W 8-6 T&F 8-5 Sat. 9-3		20	(706)956-2665	N		N
Emergency Procedures							
<p>The first person to arrive to the accident or injury notifies his/her immediate supervisor and begin to assist without endangering themselves. DO NOT move trauma patients unless their safety is threatened. Provide incoming personnel with any hazard(s) upon approach and remove or mitigate original hazard(s). Use IRPG and attached 9 Line for Transport and Treatment protocol.</p> <p>Any person may declare a medical emergency; V Fire 21 will be monitored for Medical however any TAC or Command channel may be utilized. Attached is 9 Line Medical Incident Report to be followed transport priority. Follow IRPG ppg.99-109 (pink) for Emergency Care Guidelines.</p> <p>Landing Zones: (Irwin Mill Fire) 34 25' 52.53" N 84 41" 33.90" W (Tatum Gulf) 34 42' 27.11" N 85 29' 43.61" W</p>							
Prepared by (Medical Unit Leader)				10. Reviewed by (Safety Officer)			
Robert C. Rogers, MEDL (t)				Shane Barrow, SOFR			

Medical Incident Report

FOR ALL MEDICAL EMERGENCIES: IDENTIFY ON SCENE INCIDENT COMMANDER BY NAME AND POSITION AND ANNOUNCE "MEDICAL EMERGENCY" TO INITIATE RESPONSE FROM IMT COMMUNICATIONS/DISPATCH.

Use items one through nine to communicate situation to communications/dispatch.

1. CONTACT COMMUNICATIONS/DISPATCH

Ex: "Communications, Div. Alpha. Stand-by for Priority Medical Incident Report." (If life threatening request designated frequency be cleared for emergency traffic.)

2. INCIDENT STATUS: *Provide incident summary and command structure.*

Nature of Injury/Illness		<i>Describe the injury (Ex: Broken leg with bleeding)</i>
Incident Name		<i>Geographic Name + "Medical" (Ex: Trout Meadow Medical)</i>
Incident Commander		<i>Name of IC</i>
Patient Care		<i>Name of Care Provider (Ex: EMT Smith)</i>

3. INITIAL PATIENT ASSESSMENT: *Complete this section for each patient. This is only a brief, initial assessment. Provide additional patient info after completing this 9 Line Report.*

Number of Patients:	Male / Female	Age:	Weight:
Conscious? <input type="checkbox"/> YES <input type="checkbox"/> NO = MEDEVAC!			
Breathing? <input type="checkbox"/> YES <input type="checkbox"/> NO = MEDEVAC!			
Mechanism of Injury: <i>What caused the injury?</i>			
Lat/Long (Datum WGS84) <i>Ex: N 40° 42.45' x W 123° 03.24'</i>			

4. SEVERITY OF EMERGENCY, TRANSPORT PRIORITY

SEVERITY	TRANSPORT PRIORITY
<input type="checkbox"/> URGENT-RED Life threatening injury or illness. <i>Ex: Unconscious, difficulty breathing, bleeding severely, 2° – 3° burns more than 4 palm sizes, heat stroke, disoriented.</i>	Ambulance or MEDEVAC helicopter. Evacuation need is IMMEDIATE.
<input type="checkbox"/> PRIORITY-YELLOW Serious Injury or illness. <i>Ex: Significant trauma, not able to walk, 2° – 3° burns not more than 1-2 palm sizes.</i>	Ambulance or consider air transport if at remote location. Evacuation may be DELAYED.
<input type="checkbox"/> ROUTINE-GREEN Not a life threatening injury or illness. <i>Ex: Sprains, strains, minor heat-related illness.</i>	Non-Emergency. Evacuation considered Routine of Convenience.

5. TRANSPORT PLAN:

Air Transport: (Agency Aircraft Preferred)

<input type="checkbox"/> Helispot	<input type="checkbox"/> Short-haul/Hoist	<input type="checkbox"/> Life Flight	<input type="checkbox"/> Other
Ground Transport:			
<input type="checkbox"/> Self-Extract	<input type="checkbox"/> Carry-Out	<input type="checkbox"/> Ambulance	<input type="checkbox"/> Other

6. ADDITIONAL RESOURCE/EQUIPMENT NEEDS:

<input type="checkbox"/> Paramedic/EMT(s)	<input type="checkbox"/> Crew(s)	<input type="checkbox"/> SKED/Backboard/C-Collar
<input type="checkbox"/> Burn Sheet(s)	<input type="checkbox"/> Oxygen	<input type="checkbox"/> Trauma Bag
<input type="checkbox"/> Medication(s)	<input type="checkbox"/> IV/Fluid(s)	<input type="checkbox"/> Cardiac Monitor/AED
<input type="checkbox"/> Other (i.e. splints, rope rescue, wheeled litter)		

7. COMMUNICATIONS:

Function	Channel Name/Number	Receive (Rx)	Tone/NAC *	Transmit (Tx)	Tone/NAC *
<i>Ex: Command</i>	<i>Forest Rpt, Ch. 2</i>	<i>168.3250</i>	<i>110.9</i>	<i>171.4325</i>	<i>110.9</i>
COMMAND					
AIR-TO-GRND					
TACTICAL					

*(NAC for digital radio system)

8. EVACUATION LOCATION:

Lat/Long (Datum WGS84) <i>EX: N 40 42.45' x W 123 03.24'</i>	
Patient's ETA to Evacuation Location:	
Helispot/Extraction Size and Hazards:	

9. CONTINGENCY:

Considerations: <i>If primary options fail, what actions can be implemented in conjunction with primary evacuation method? Be thinking ahead...</i>	REMEMBER: Confirm ETA's of resources ordered Act according to your level of training Be Alert. Keep Calm. Think Clearly. Act Decisively.
--	--

Turn in PINK and BLUE copies to FINANCE

OPTIONAL FORM 297 (Rev. 7-90) USDA/USDI
NSN 7540-01-119-5628 50297-102

17. CONTRACTOR'S OR AUTHORIZED AGENT'S SIGNATURE <i>Operator Sign Here</i>		18. GOVERNMENT OFFICER'S SIGNATURE <i>Supv Sign Here</i>		19. DATE SIGNED <i>11/16/16</i>	
16. INVOICE POSTED BY (Recorder's Initials) <i>Finance use only</i>					
15. EQUIPMENT STATUS <input type="checkbox"/> a. Inspected and under agreement <input type="checkbox"/> b. Released by Government <input type="checkbox"/> c. Withdrawn by Contractor					
14. REMARKS (released, down time and cause, problems, etc.) <i>Type 6 + 7 Engines</i>		13. EQUIPMENT USE <i>Document Pump usage hours</i>		12. DATE <i>11/16/16</i>	
11. OPERATING SUPPLIES FURNISHED BY <input type="checkbox"/> GOVERNMENT <input type="checkbox"/> CONTRACTOR (wet)		10. LICENSE NUMBER <i>GV3A17B</i>		9. SERIAL NUMBER <i>GV420-2006</i>	
8. OPERATOR FURNISHED BY <input type="checkbox"/> GOVERNMENT <input type="checkbox"/> CONTRACTOR		7. EQUIPMENT MODEL <i>F450 Type 7</i>		6. EQUIPMENT MAKE <i>Ford</i>	
5. OPERATOR (name) <i>Your Name</i>		4. INCIDENT NUMBER <i>420870966</i>		3. INCIDENT OR PROJECT NAME <i>Tatum Gulf</i>	
2. CONTRACTOR (name) <i>GTC Bulloch 31</i>		1. AGREEMENT NUMBER <i>420870966</i>		1. AGREEMENT NUMBER	

EMERGENCY EQUIPMENT SHIFT TICKET
NOTE: The responsible Government Officer will update this form each day or shift and make initial and final equipment inspections.

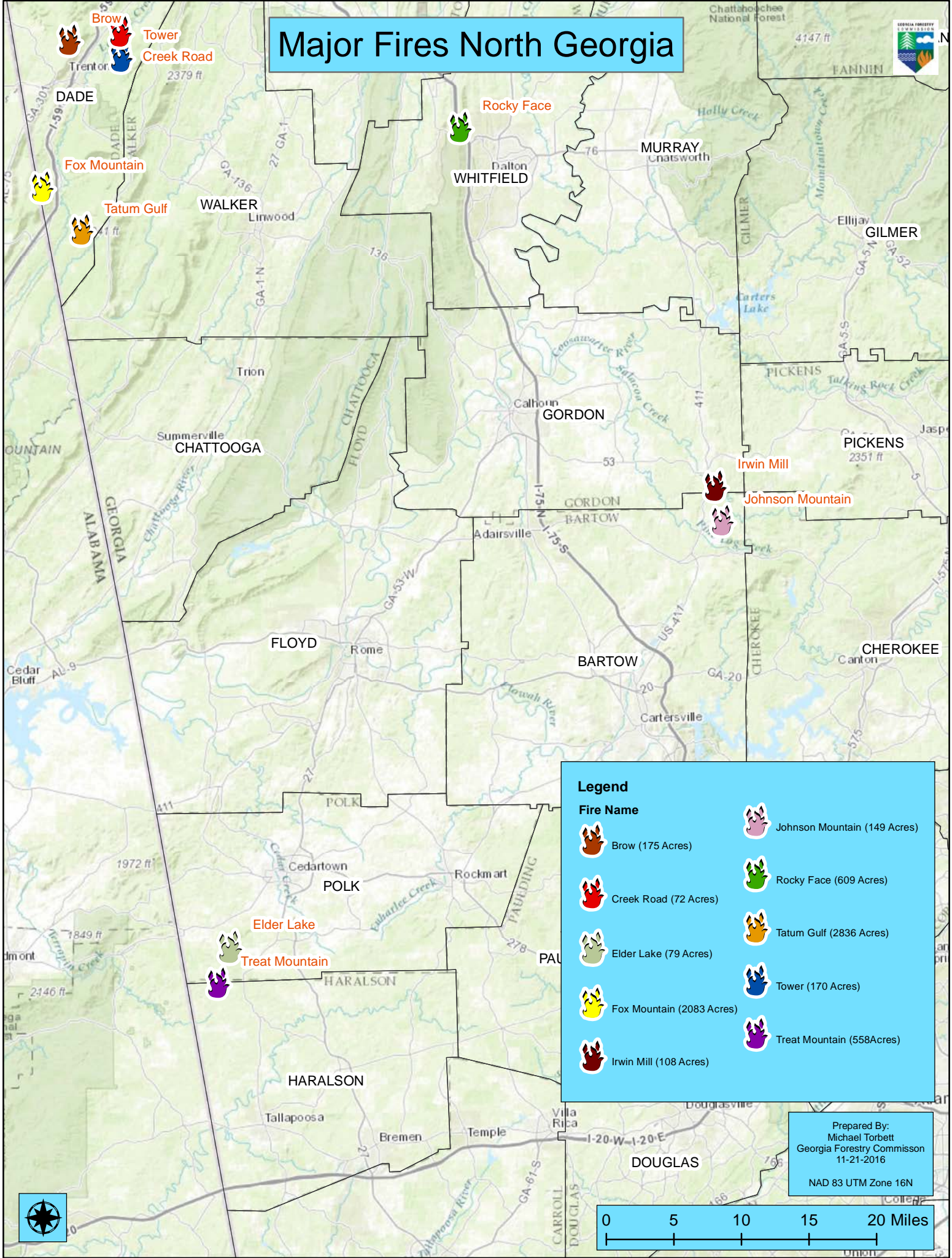
FINANCE

E#

CREW TIME REPORT










(1) CREW NAME <i>Finance</i>	(2) CREW NUMBER <i>0-123.4</i>
(3) PERSON RESPONSIBLE FOR FIRE <i>GAS/60003</i>	(4) FIRE NAME <i>Tatum Gulf</i>
(5) FIRE NUMBER <i>420870966</i>	(6) DATE <i>11/16/16</i>
(7) NAME OF EMPLOYEE <i>Smokey bear</i>	(8) CLASSIFICATION <i>0700 1200 1230 2030</i>
(9) ON	(10) OFF
(11) REMARKS <i>Enter Fire name here</i>	(12) OFFICER-IN-CHARGE (Signature) <i>Supv. Signs</i>
(13) TITLE (Officer-in-Charge)	(14) NAME (Person Posting to Emergency Time Report)
(15) DATE	

Major Fires North Georgia

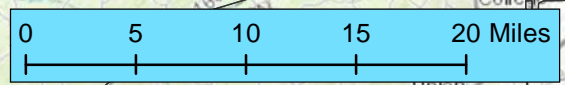


Legend

Fire Name

	Brow (175 Acres)		Johnson Mountain (149 Acres)
	Creek Road (72 Acres)		Rocky Face (609 Acres)
	Elder Lake (79 Acres)		Tatum Gulf (2836 Acres)
	Fox Mountain (2083 Acres)		Tower (170 Acres)
	Irwin Mill (108 Acres)		Treat Mountain (558 Acres)

Prepared By:
 Michael Torbett
 Georgia Forestry Commission
 11-21-2016
 NAD 83 UTM Zone 16N

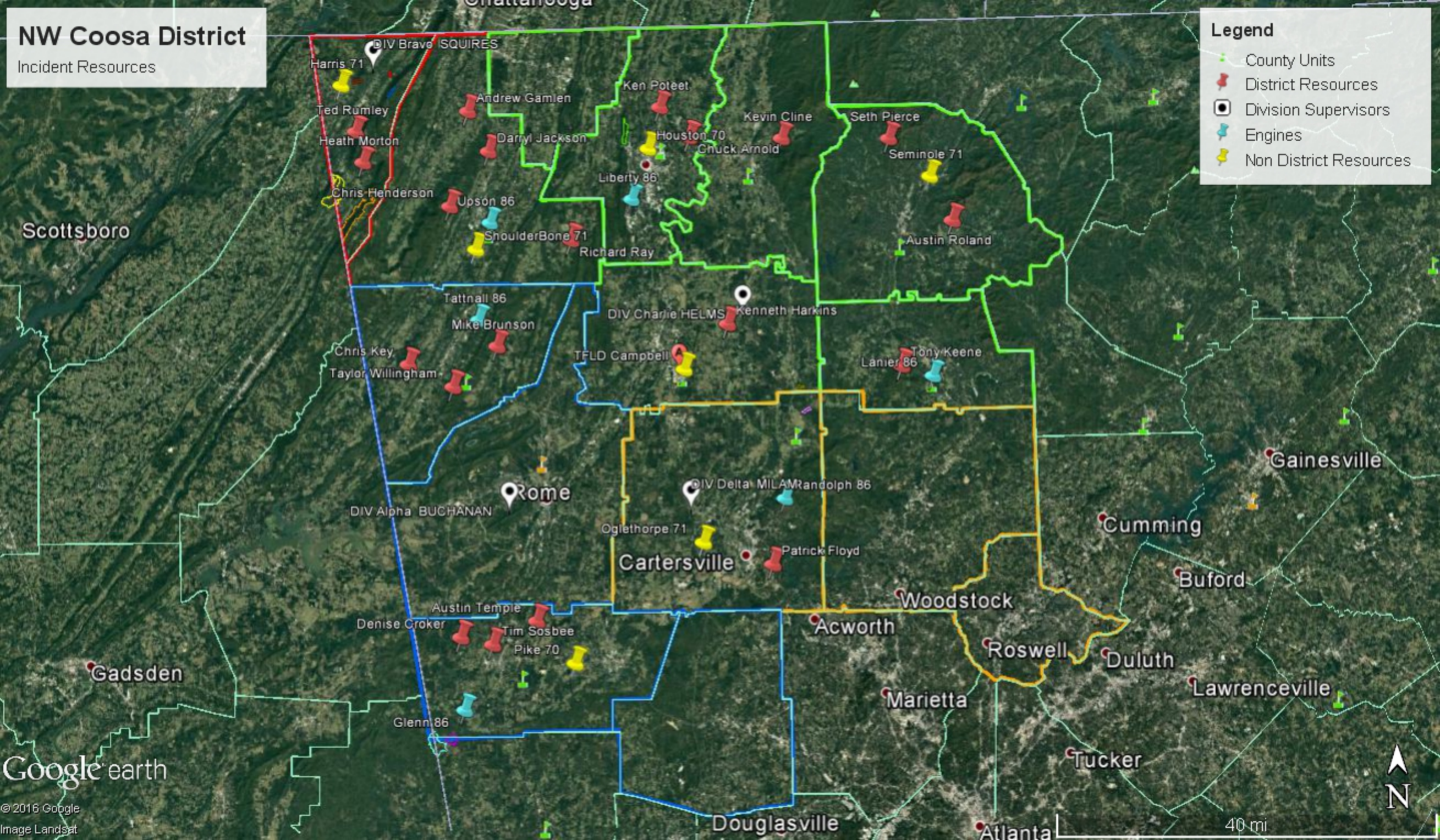


NW Coosa District

Incident Resources

Legend

- County Units
- District Resources
- Division Supervisors
- Engines
- Non District Resources



Scottsboro

Gainesville

Cumming

Buford

Woodstock

Acworth

Roswell

Duluth

Lawrenceville

Marietta

Tucker

Douglasville

Atlanta

40 mi

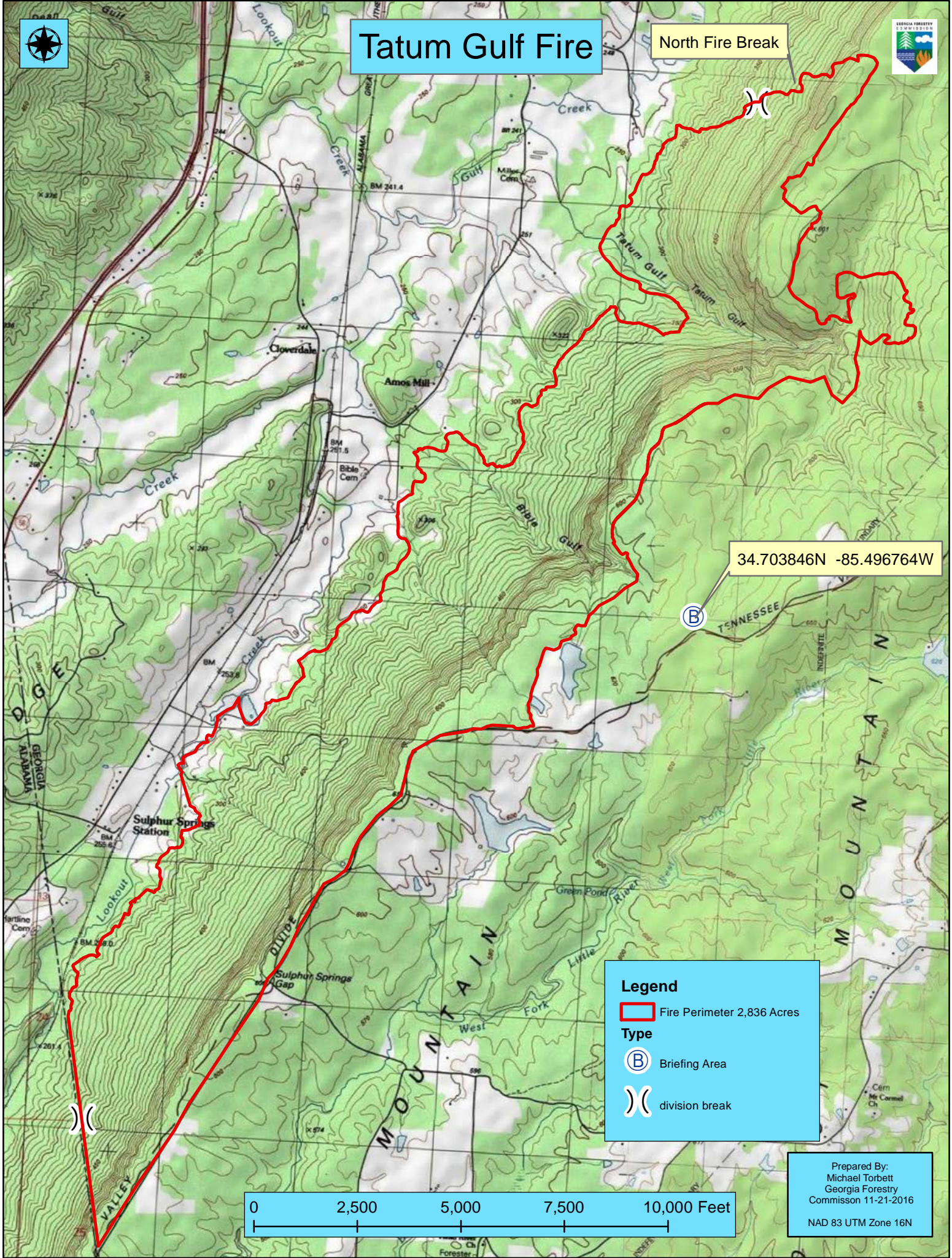
Google earth

© 2016 Google
Image Landsat



Tatum Gulf Fire

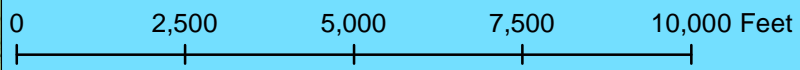
North Fire Break



34.703846N -85.496764W

Legend

- Fire Perimeter 2,836 Acres
- Type**
- Briefing Area
- division break



Prepared By:
 Michael Torbett
 Georgia Forestry
 Commission 11-21-2016
 NAD 83 UTM Zone 16N

COOSA FIRES PHONE LIST

11/24/16

Incident Communication (Hours: 0800-2000)

AGENCY OFFICIALS			OPERATIONS		
Kris Butler	706-676-0168	GFC Coosa West	Brent McCarty	229-938-8718	OSC2
Frank Sorrells	912-381-7503	GFC Protection	Blair Joiner	229-237-9026	OSC2 (t)
Tim Reeve	404-275-6277	EMA Area 6	DIVISIONS		
Sammy Young		GSP	Troy Helms	478-718-7371	DIVS Tatum Gulf
			Chris Buchanan	478-550-2862	DIVS Holding Group
			Jason Squires	229-563-3959	DIVS Holding Group
COMMAND - IC			AIR OPERATIONS		
Trent Ingram	229-726-0285	IC	Clay Chatham	706-224-5155	
SAFETY OFFICERS			Georgia DNR		
Shane Barrow	706-699-2412	SOF2	Jeff Galloway	404-520-3540	DNR IC
Phil Dalenberg	912 515-4156	SOF	Don McGowan	404-987-4369	DNR Ops
INFORMATION			David Reed	706-934-4617	Leader Holding Group 1
Byron Haire	912-536-9352	PIO	James Keener	404-252-4711	LE Holding Group 2
Land line	912-515-9203		Ben Cunningham	706-252-4711	LE Holding Group 1
DISPATCH			RAILROADS		
Central Response	800-GA-TREES	Hit 1			
LOGISTICS					
Chuck Water	404-276-1572	DNR			
Tom Lambert	229-343-0838	LSC2			
Rachel Saunders		Supply			
PLANNING					
Keith Murphy	706-318-2967	RESL			
Chuck Norvell	678-314-9824	DEMOB/SCKN			
Rusty Brown	478-9736231	CTSP			
FINANCE					
Teresa Kregl	229-344-1664	FSC3(t)			
Penny Brown	478-808-7824	PTRC			
FEDERAL			COUNTY		
	Federal		Alex Case	706-657-4111	Dade County Emergency Services
			Ted Rumley- Chrm.	423-667-8999	Dade County Commissioners
STATE			Ray Cross	706-657-3233	Dade County Sheriff
	State		Ansel Smith	423-364-9993	Dade County Emergency Services
Vicky Edge	706-270-4568	GFC Gordon/Murray Unit			
Chuck Arnold	423-802-6507	GFC Whitfield Unit			
Mark Munns	706-388-0133	GFC Bartow Unit			
Heath Morton	423-240-7509	GFC Dade Unit			
Denise Croker	770-548-8092	GFC Polk/Paulding Unit			
Darrel Jackson	706-676-6842	GFC Walker Unit			
Mike Brunson	706-266-4244	GFC Chattooga/Floyd Unit			
Seth Pierce	423-802-6524	GFC Gilmer/Pickens Unt			
Tony Page	770-891-4545	GFC Dawson Forest			
Sherri Munns	770-547-8328	Coosa DAA (West)			
Gail Murray	770-531-6043	Coosa DAA (East)			
Kris Butler	706-676-0168	Coosa ADM (West)			
Shawn Alexander	678-897-9137	Coosa ADM (East)	Georgia State Patrol	770-387-3702	
Ken Masten	770-530-6548	Coosa DM			



Nathan Deal
Governor

Robert D. Farris
Director

Board of Commissioners:

Wesley Langdale, Chairman
Valdosta

Jimmy Allen
Chula

Jim L. Gillis, Jr.
Soperton

Robert Pollard
Appling

W. Earl Smith
Greensboro

Larry Spillers
Barnesville

H. G. Yeomans
Swainsboro

**INCIDENT
MANAGEMENT**
T E A M



5645 Riggins Mill Road
Dry Branch, GA 31020
P. 478-751-3500
F. 478-751-3465

An Equal Opportunity
Employer & Service Provider

Bartow County Unit

Office Information	
Office Phone	770-387-3750
Office Fax	770-387-4805
Office Address	3700 Hwy 140 E
Office City/State/Zip	Rydal GA 30171

Whitfield County Unit

Office Information	
Office Phone	706-935-3162
Office Fax	706-272-2944
Office Address	2517 Cleveland Highway
Office City/State/Zip	Dalton, GA 30720

Chattooga County Unit

Office Information	
Office Phone	706-295-6020
Office Fax	706-802-5315
Office Address	141 Wilshire Road
Office City/State/Zip	Rome, GA 30161

Dade County Unit

Office Information	
Office Phone	706-657-4211
Office Fax	706-657-2876
Office Address	165 Robert Ryan Jr. Road
Office City/State/Zip	Trenton, GA 30752



Nathan Deal
Governor

Robert D. Farris
Director

Board of Commissioners:

Wesley Langdale, Chairman
Valdosta

Jimmy Allen
Chula

Jim L. Gillis, Jr.
Soperton

Robert Pollard
Appling

W. Earl Smith
Greensboro

Larry Spillers
Barnesville

H. G. Yeomans
Swainsboro

**INCIDENT
MANAGEMENT**
T E A M



5645 Riggins Mill Road
Dry Branch, GA 31020
P. 478-751-3500
F. 478-751-3465

*An Equal Opportunity
Employer & Service Provider*

Gilmer County Unit

Office Information	
Office Phone	706-635-2363
Office Fax	706-636-2363
Office Address	25 Ellington Road
Office City/State/Zip	Ellijay, GA 30540

Gordon County Unit

Office Information	
Office Phone	706-624-1432
Office Fax	706-624-1372
Office Address	311 Old Fairmount Hwy SE
Office City/State/Zip	Calhoun, GA 30701

Murray County Unit

Office Information	
Office Phone	706-695-3422
Office Fax	706-695-7352
Office Address	705 Old Dalton Ellijay Road
Office City/State/Zip	Chatsworth, GA 30705

Polk County Unit

Office Information	
Office Phone	770-749-2251
Office Fax	770-749-4407
Office Address	1735 Rockmart Highway
Office City/State/Zip	Cedartown, GA 30125



Nathan Deal
Governor

Robert D. Farris
Director

Board of Commissioners:

Wesley Langdale, Chairman
Valdosta

Jimmy Allen
Chula

Jim L. Gillis, Jr.
Soperton

Robert Pollard
Appling

W. Earl Smith
Greensboro

Larry Spillers
Barnesville

H. G. Yeomans
Swainsboro

**INCIDENT
MANAGEMENT**
T E A M



5645 Riggins Mill Road
Dry Branch, GA 31020
P. 478-751-3500
F. 478-751-3465

*An Equal Opportunity
Employer & Service Provider*

Walker County Unit

Office Information	
Office Phone	706-638-5556
Office Fax	706-638-9491
Office Address	207 Foster Blvd.
Office City/State/Zip	Lafayette, GA 30728