

PINNACLE MTN FIRE

Saturday, December 03, 2016

Day Operational Period 0700 – 1900



For the latest information on fires across the country including the Pinnacle Mountain Fire visit <http://inciweb.nwcg.gov>

CENTRAL UTAH
FIRE
INTERAGENCY

Ostler's Type 3 Incident Management Team



INCIDENT OBJECTIVES (ICS 202)

1. Incident Name:	2. Operational Period: DAY	
PINNACLE MOUNTAIN	Date/Time From: 12/03/2016 0700 SAT	Date/Time To: 12/03/2016 1900 SAT
3. Objective(s):		
<ul style="list-style-type: none"> • Provide for fire fighter safety through a risk informed approach balancing exposure with risk. (Stop,Think, Talk, then Act!) • Throughout the incident, work to enhance relationships with the public and local stakeholders. Provide regular and timely information about the incident. • Continue to maintain, establish, and reinforce perimeter firebreaks with dozers and hand crews. • Perform mop-up, repair work and snag out trails as directed. 		
4. Operational Period Command Emphasis:		
<ul style="list-style-type: none"> • Contain fire within the boundaries of the foothills trail on the North Carolina/South Carolina state line, to the Brushy Knob road on the East, the Greenville County road on the south, keeping fire east of the Sassafras trail head. • Continue to mop-up control lines and implement repair work as needed. 		
General Situational Awareness:		
Be aware of inclement weather conditions and take appropriate action based on situational awareness.		
Maintain awareness of snags, footing, and driving vehicles, UTVs and ATVs.		
5. Site Safety Plan Required? Yes <input type="checkbox"/> No <input checked="" type="checkbox"/>		
Approved Site Safety Plan(s) Located at:		
6. Incident Action Plan (the items checked below are included in this Incident Action Plan):		
<input checked="" type="checkbox"/> ICS 202 <input checked="" type="checkbox"/> ICS 203 <input checked="" type="checkbox"/> ICS 204 <input checked="" type="checkbox"/> ICS 205 <input checked="" type="checkbox"/> ICS 205A <input checked="" type="checkbox"/> ICS 206	<input type="checkbox"/> ICS 207 <input type="checkbox"/> ICS 208 <input type="checkbox"/> ICS 220 <input checked="" type="checkbox"/> Map/Chart <input checked="" type="checkbox"/> Weather Forecast/Tides/Currents	Other Attachments: <input checked="" type="checkbox"/> DEMOB LIST <input checked="" type="checkbox"/> SAFETY MESSAGE <input checked="" type="checkbox"/> ICS214 <input type="checkbox"/> _____
7. Prepared by: NONI DALTON	Position/Title: PSC	Signature:
8. Approved by Incident Commander:		Signature:
ICS 202 IAP Page		Date/Time:

ORGANIZATION ASSIGNMENT LIST (ICS 203)

1. Incident Name:		2. Operational Period: DAY	
PINNACLE MOUNTAIN		Date/Time From: 12/03/2016 0700 SAT	Date/Time To: 12/03/2016 1900 SAT
3. Incident Commander(s) and Command Staff:		7. Operations Section:	
IC/UC	OSTLER, BRETT STATON, MIKE	FIELD OPERATIONS	MADSEN, BART
IC/UC	MATHESON, CLAY (T)	DEPUTY FIELD OPERATIONS	CASELL, RAY STUCKEY, PETE (T)
LIAISON OFFICER	WOMACK, PIERCE (PICKENS COUNTY)	PLANNING OPERATIONS	HEYDER, ADAM
LIAISON OFFICER	REID, RYAN (GREENVILLE COUNTY)		
SAFETY OFFICER	CHAPPELL, GLEN		
INFORMATION OFFICER	YARDLEY, KAYLI	DIVISION/GROUP	A/C/D/Z UNSTAFFED
INFORMATION OFFICER	HOLT, JUSTIN WELCH, HOLLY	DIVISION/GROUP	BRAVO CHRISTENSEN, MATT BOYD, ROY
		DIVISION/GROUP	ECHO RIDING, TREVOR RIGGIN, JEFF
		DIVISION/GROUP	PICKENS COUNTY TBD
		DIVISION/GROUP	SECURITY STONE, JEREMY (PM)
4. Agency/Organization Representative(s):		7b. Air Operations Branch:	
Agency/Organization	Name	AIR OPS BRANCH DIRECTOR	
FIRE DEPARTMENT MUTAL AID	KING, CHARLIE	AIR SUPPORT SUPERVISOR	
PICKENS CO. EMD	WOMACK, H. PIERCE MARRETT, JAY	AIR ATTACK SUPERVISOR	
GREENVILLE CO. EMD	GORDON, JASON	AIR ATTACK SUPERVISOR	
SC FORESTRY COMMISSION	KODAMA, GENE PATTON, TOM; JONES, DARRYL	HELICOPTER COORDINATOR	
SC STATE PARKS	KNOWLAND, POLL		
GREENVILLE WATERSHED	POOLE, HENRY		
5. Planning Section:		8. Finance/Administration Section:	
CHIEF	DALTON, NONI	CHIEF	BROWER, JEFF
CHIEF	TYLER MONROE (T)	DEPUTY	
SITUATION UNIT		TIME UNIT	REID, SARAH
DEMOBILIZATION UNIT		PROCUREMENT UNIT	
GIS SPECIALIST	DOUGLAS, JAMES	COMPENSATION UNIT	
SCKN	CARROLL, DRAKE	COST UNIT	
INCIDENT METEOROLOGIST	LEBO JR, TERRENCE		
TRAINING SPECIALIST			
6. Logistics Section:			
CHIEF	SUDWEEKS, LANNCE		
DEPUTY	OWEN, DAVID		
SUPPLY UNIT			
FACILITIES UNIT/FOOD UNIT	JONES, JAIME		
COMMUNICATIONS UNIT			
GROUND SUPPORT UNIT			
ORDERING MANAGER			
9. Prepared By:	Name: NONI DALTON	Position/Title: PSC	Signature:
ICS 203	IAP Page	Date/Time: 12/02/2016 0749	

Division/Group Assignment List (ICS 204 WF)

1. Incident Name:			3.			
PINNACLE MOUNTAIN			Branch:		Division/Group: A/C/D/Z	
2. Operational Period: DAY						
Date/Time From: 12/03/2016 0700 SAT		Date/Time To: 12/03/2016 1900 SAT				
4. Operations Personnel						
FIELD OPERATIONS		MADSEN, BART CASSELL, RAY ; STUCKEY, PETE (T)		PLANNING OPERATIONS		HEYDER, ADAM
DIVISION/GROUP SUPERVISOR		UNSTAFFED		AIR ATTACK SUPERVISOR		
5. Resources Assigned this Period						
Strike Team / Task Force / Resource Designator		LWD	Leader	Number Persons	Drop Off PT./Time	Pick Up PT./Time
6. Control Operations/Work Assignments:						
Patrol Status: Patrol line as needed - OPS personnel and other DIV personnel						
7. Special Instructions:						
<ul style="list-style-type: none"> Conduct a radio check when you arrive in your division. Always know your Safety Zone location. <p>Implement Repair Work as Needed.</p>						
8. Division/Group Communication Summary						
Function	Channel	RX Frequency N/W	RX Tone/NAC	TX Frequency N/W	TX Tone/NAC	Mode
COMMAND	INCIDENT	159.30750 N	023 DPL	151.18250 N	023 DPL	A
TACTICAL DIV A/C/D/Z	SC TAC 2	151.22750 N	203.5 HZ	151.22750 N	203.5 HZ	A
AIR TO GROUND	SC TAC 6	151.48250 N	203.5 HZ	151.48250 N	203.5 HZ	A
9. Prepared By (Resource Unit Leader)			Approved By (Planning Section Chief)		Date	Time
DRAKE CARROLL			NONI DALTON		12/02/2016	0749

Division/Group Assignment List (ICS 204 WF)

1. Incident Name:			3.				
PINNACLE MOUNTAIN			Branch:		Division/Group: BRAVO		
2. Operational Period: DAY							
Date/Time From: 12/03/2016 0700 SAT		Date/Time To: 12/03/2016 1900 SAT					
4. Operations Personnel							
FIELD OPERATIONS		MADSEN, BART CASSELL, RAY ; STUCKEY, PETE (T)		PLANNING OPERATIONS		HEYDER, ADAM	
DIVISION/GROUP SUPERVISOR		CHRISTENSEN, MATTHEW BOYD, ROY		AIR ATTACK SUPERVISOR			
5. Resources Assigned this Period							
Strike Team / Task Force / Resource Designator		LWD	Leader		Number Persons	Drop Off PT./Time	Pick Up PT./Time
HC2IA SRV#12 (C-8)		12/10	MENDOZA, ARMANDO		20	ICP/0700	ICP/1900
SCFC STRIKE TEAM		12/07	PRITCHARD, ANNETA		5	ICP/0700	ICP/1900
SOFR		12/07	BERGSTRAND, DON		1	ICP/0700	ICP/1900
EMTF-FIRELINE EMT		12/04	NORTHRUP, TYLA		1	ICP/0700	ICP/1900
6. Control Operations/Work Assignments:							
<p>Mop-up and patrol previously burned out containment lines to the degree necessary to reduce the likely hood of escape. Take appropriate action to contain any detected spot-over or hot-spot near the containment line. Utilize blowers to keep containment lines clear from ongoing leaf fall. Fall snags as necessary.</p> <p>SCFC Strike Team: Fire Track 1: McGill, Michael (LW-12/6) ; Nicholson, Frank (LW-12/6) Fire Track 2: Martin, George (LW-12/6) ; Jordan, Steve (LW-12/6)</p>							
7. Special Instructions:							
<ul style="list-style-type: none"> Conduct a radio check when you arrive in your division. Always know your Safety Zone location. Minimize traffic on Greenville Watershed roads. <p>Implement Repair Work as Needed.</p>							
8. Division/Group Communication Summary							
Function	Channel	RX Frequency N/W	RX Tone/NAC	TX Frequency N/W	TX Tone/NAC	Mode	
COMMAND	INCIDENT	159.30750 N	023 DPL	151.18250 N	023 DPL	A	
TACTICAL DIV B	SC TAC 5	151.28000 N	203.5 HZ	151.28000 N	203.5 HZ	A	
AIR TO GROUND	SC TAC 6	151.48250 N	203.5 HZ	151.48250 N	203.5 HZ	A	
9. Prepared By (Resource Unit Leader)			Approved By (Planning Section Chief)		Date	Time	
DRAKE CARROLL			NONI DALTON		12/02/2016	0749	

Division/Group Assignment List (ICS 204 WF)

1. Incident Name:			3.				
PINNACLE MOUNTAIN			Branch:		Division/Group: ECHO		
2. Operational Period: DAY							
Date/Time From: 12/03/2016 0700 SAT		Date/Time To: 12/03/2016 1900 SAT					
4. Operations Personnel							
FIELD OPERATIONS		MADSEN, BART CASSELL, RAY ; STUCKEY, PETE (T)		PLANNING OPERATIONS		HEYDER, ADAM	
DIVISION/GROUP SUPERVISOR		RIDING, TREVOR RIGGIN, JEFF		AIR ATTACK SUPERVISOR			
5. Resources Assigned this Period							
Strike Team / Task Force / Resource Designator		LWD	Leader		Number Persons	Drop Off PT./Time	Pick Up PT./Time
HC2IA SRV#3 (C-9)		12/10	LOPEZ , JOSE		20	ICP/0700	ICP/1900
SOFR		12/09	FARINETTII, CHRIS		1	ICP/0700	ICP/1900
6. Control Operations/Work Assignments:							
<p>Mop-up and patrol previously burned out containment lines to the degree necessary to reduce the likely hood of escape. Take appropriate action to contain any detected spot-overs or hot-spots near the containment line. Utilize blowers to keep containment lines clear from ongoing leaf fall. Fall snags as necessary.</p>							
7. Special Instructions:							
<ul style="list-style-type: none"> Conduct a radio check when you arrive in your division. Always know your Safety Zone location. Minimize traffic on Greenville Watershed roads. <p>Implement Repair Work as Needed.</p>							
8. Division/Group Communication Summary							
Function	Channel	RX Frequency N/W	RX Tone/NAC	TX Frequency N/W	TX Tone/NAC	Mode	
COMMAND	INCIDENT	159.30750 N	023 DPL	151.18250 N	023 DPL	A	
TACTICAL DIV E	SC TAC 3	151.35500 N	203.5 HZ	151.35500 N	203.5 HZ	A	
AIR TO GROUND	SC TAC 6	151.48250 N	203.5 HZ	151.48250 N	203.5 HZ	A	
9. Prepared By (Resource Unit Leader)			Approved By (Planning Section Chief)		Date	Time	
DRAKE CARROLL			NONI DALTON		12/02/2016	0749	

Division/Group Assignment List (ICS 204 WF)

1. Incident Name:			3.			
PINNACLE MOUNTAIN			Branch:		Division/Group: PICKENS COUNTY	
2. Operational Period: DAY						
Date/Time From: 12/03/2016 0700 SAT		Date/Time To: 12/03/2016 1900 SAT				
4. Operations Personnel						
FIELD OPERATIONS		MADSEN, BART BRUCKE, JARROD		PLANNING OPERATIONS		HEYDER, ADAM
DIVISION/GROUP SUPERVISOR		TBD		AIR ATTACK SUPERVISOR		
5. Resources Assigned this Period						
Strike Team / Task Force / Resource Designator		LWD	Leader	Number Persons	Drop Off PT./Time	Pick Up PT./Time
PC MAINTENANCE/LOGISTICS			TBD	4	ICP/0700	ICP/1900
EMS			CHILDRESS, DAVID	2	ICP/0700	ICP/1900
WESLEYAN CAMP CREW			HAYES, GREG	5	ICP/0700	ICP/1900
TASK FORCE (4 UTV) ON STANDBY			TBD		ICP/0700	ICP/1900
6. Control Operations/Work Assignments:						
<p><u>Pickens County Maintenance/Logistics</u> Provide ground support.</p> <p><u>EMS</u> Provide assistance for medical emergencies.</p> <p><u>Task Force</u> Contact Divisions to provide ATV/UTV transport to and from line as needed. Patrol and Monitor line as needed. Utilize blowers to keep containment lines clear from ongoing leaf fall.</p>						
7. Special Instructions:						
Contact Numbers:						
<ul style="list-style-type: none"> • Fincannon, Kevin: 864-907-9665 • Kent, Karen: 864-420-9717 • McKinney, George: 864-377-4809 • Simmons, Sam: 864-915-0995 						
8. Division/Group Communication Summary						
Function	Channel	RX Frequency N/W	RX Tone/NAC	TX Frequency N/W	TX Tone/NAC	Mode
COMMAND	INCIDENT	159.30750 N	023 DPL	151.18250 N	023 DPL	A
LOGISTICS	SC TAC 5	151.28000 N	203.25 HZ	151.28000 N	203.25 HZ	A
AIR TO GROUND	SC TAC 6	151.48250 N	203.5 HZ	151.48250 N	203.5 HZ	A
9. Prepared By (Resource Unit Leader)			Approved By (Planning Section Chief)		Date	Time
DRAKE CARROLL			NONI DALTON		12/02/2016	0749

Division/Group Assignment List (ICS 204 WF)

1. Incident Name:			3.				
PINNACLE MOUNTAIN			Branch:		Division/Group: SECURITY		
2. Operational Period: DAY							
Date/Time From: 12/03/2016 0700 SAT		Date/Time To: 12/03/2016 1900 SAT					
4. Operations Personnel							
OPERATIONS CHIEF				BRANCH DIRECTOR			
DIVISION/GROUP SUPERVISOR		STONE, (NIGHT)		AIR ATTACK SUPERVISOR			
5. Resources Assigned this Period							
Strike Team / Task Force / Resource Designator		LWD	Leader		Number Persons	Drop Off PT./Time	Pick Up PT./Time
LE TEAM 1: ICP (NIGHT)			STONE, JEREMY		2	ICP/1900	ICP/0700
6. Control Operations/Work Assignments:							
Provide site security.							
7. Special Instructions:							
Other Officers will continue to patrol areas near the fire.							
On Site Contact Number (PM):							
<ul style="list-style-type: none"> • Stone, Jeremy: 864-359-5535 • Moon, Anthony: 864-723-5704 							
For additional assistance:							
<ul style="list-style-type: none"> • Main Sheriff Office: 864-898-5500 							
8. Division/Group Communication Summary							
Function	Channel	RX Frequency N/W	RX Tone/NAC	TX Frequency N/W	TX Tone/NAC	Mode	
COMMAND							
TACTICAL							
LOGISTICS							
AIR TO GROUND							
9. Prepared By (Resource Unit Leader)			Approved By (Planning Section Chief)		Date	Time	
DRAKE CARROLL			NONI DALTON		12/02/2016	0749	

HEALTH AND SAFETY MESSAGE

SAFETY starts with ***YOU***

We are **ALL** accountable for **SAFE** behaviors

INCIDENT: Pinnacle Mountain	DATE: December 03, 2016
<p style="text-align: center;">Major Hazards and Risks</p> <ul style="list-style-type: none">✓ ATV/UTV: Operate within machine and driver capabilities. Maintain equipment by performing a preventative maintenance daily before operational shift.✓ DRIVING: Observe posted speed limits, drive defensively, and watch out for traffic on hwy. 11. Dirt roads on the fire have become slick where disturbed by heavy equipment prior to the rain.✓ SNAGS: Are present in all divisions. As mop up begins, be on the lookout for hazard trees that may have been missed or have deteriorated over time and have become dangerous.	
<p style="text-align: center;">COMPLACENCY:</p> <p>It's up to each of us to control and eliminate complacency. Challenge yourself to focus on the task at hand, maintain a positive attitude, continue to work as a productive member toward the objectives, and encourage fellow workers to adhere to all the safety fundamentals.</p>	
<p style="text-align: center;">Watch Out Situation of the Day</p> <p style="text-align: center;">Doing the mindless mop-up with hardly a hotspot to be found</p> <p>Yep, this is the tough part. All the adrenalin rush is gone and it's just a little hard to get excited about hiking up that hill again.</p> <p>But... guess when most injuries occur on fires???</p> <p>If you guessed during the mop-up stage, please give yourself a pat on the back.</p>	<p style="text-align: center;">Exposure</p> <ul style="list-style-type: none">✓ How far do you need to mop in to meet objectives on your piece of line?✓ Think about mop up in terms of the amount of exposure to hazards that you are accumulating.✓ Only mop in the minimum distance necessary to meet objectives.✓ Engage in ongoing dialogue with your supervisor and your resources in order to determine the "right" amount.✓ Limit your exposure to hazards by only mopping in the minimum distance necessary
Safety Officers: Glen S. Chappell, Don Bergstrand, Chris Farinetti	If your actions inspire others to dream more, learn more, do more and become more, you are a leader. ~John Quincy Adams



INCIDENT Weather Forecast



FORECAST NO: 19
PREDICTION FOR: Saturday
SHIFT DATE: December 3
TIME AND DATE
FORECAST ISSUED: 1630 December 2, 2016

NAME OF FIRE: Pinnacle Mountain
UNIT: South Carolina Forestry Commission
SIGNED: Terry Lebo
Incident Meteorologist

WEATHER DISCUSSION: High pressure centered north of the area this morning will gradually drift east and north today and tonight. A weak mid-level wave will move east along the Gulf Coast early Sunday through Sunday night, spreading light rain over western South Carolina. A more potent system will emerge from the Southwest Monday and rapidly move northeast, spreading more significant rain and wind over the area late Monday night and early Tuesday. A cold front will move across the region Wednesday with an arctic air mass spreading over the southeast for the end of the week.

WEATHER FORECAST For 2150 ft

WEATHER: Partly sunny with increasing high clouds. Mostly cloudy overnight with light rain possible around daybreak. Rainfall less than 0.05"

TEMPERATURES: Today's High 48-54 Tonight's Low 35-40
HUMIDITY: Today's Min 35-40% Tonight's Max 80-85%

20 FT WINDS: Calm winds becoming east to southeast 3-7 mph in the afternoon.

HAINES INDEX: 4
LAL 1
CWR 0%

STABILITY/INVERSION: Weak inversion breaking around 0830.

MIXING HEIGHT: Around 3000 feet.

TRANSPORT WINDS: West 5 mph.

OUTLOOK FOR SUNDAY: Cloudy. A 70% chance of light rain. Max temp 44-49. Min RH 75-80%. Northeast winds 3-6 mph. Haines: 3. LAL 1. Rainfall 0.10"-0.25"

OUTLOOK FOR SUNDAY NIGHT: Cloudy with a 60% chance of rain. Min temp 40-45. Max RH 95-100%. Northeast winds 3-6 mph-Rainfall less than 0.10"

OUTLOOK FOR MONDAY: Cloudy. A 70% chance of rain in the evening. Max temp 48-53. Min RH 80-85%. East to northeast winds 3-6 mph. Haines: 3. LAL 1. Rainfall less than 0.10"

OUTLOOK FOR MONDAY NIGHT: Cloudy with an 80% chance of showers. Min temp 42-47. Max RH 95-100%. Northeast winds 5-10 mph with gusts to 15 mph. Rainfall 0.25"-0.50"

EXTENDED FORECAST:

TUESDAY: Cloudy with an 80% chance of showers. Max temp 52-57. Min temp 39-44. Min RH 75-80%. West-southwest winds 6-10 mph with gusts to 15 mph in the afternoon. Rainfall 0.25"-0.50"

WEDNESDAY: Partly to mostly cloudy. Max temp 52-57. Min temp 30-35. Min RH 55-60%. Northwest winds 5-8 mph with gusts to 15 mph, becoming southwest in the afternoon.

THURSDAY: Partly sunny. Max temp 44-49. Min temp 23-28. Min RH 30-35%. Northwest winds 6-10 mph with gusts 15-20 mph in the afternoon.

PRAWS Summary	Victoria Valley (13)	Ceasars Head (14)	Gravelly WMA (15)
---------------	----------------------	-------------------	-------------------



Pinnacle Mountain Fire General Weather Outlook

For Planning Purposes Only, see the IAP for the Official Forecast

Forecast made 2 December, 2016 - Incident Meteorologist (IMET) Terry Lebo

	Sat	Sun	Mon	Tue	Wed	Thu
Date	12/3	12/4	12/5	12/6	12/7	12/8
Watch/Warning	None	None	None	None	None	None
Clouds at 1400 (%)	70	100	90	70	60	40
MinT/MaxT (F)	/54	35/49	40/53	42/57	39/57	30/49
MaxRH/MinRH (%)	/35	80/75	100/80	100/80	85/55	75/30
Precip Chance	0%	70%	70%	80%	20%	20%
Wind Morning	0	NE 3	E-NE 3	W-SW 6	NW 7	NW 6
Morning Gust	0	4	4	9	12	10
Wind Afternoon	SE 5	NE 6	E-NE 5	W-SW 9	SW 7	NW 10
Afternoon Gust	7	7	7	12	10	18
Haines Index	4	3	3	3	3	4

KEY: Forecast conditions at 2150 ft

Moderate Burning Conditions

Take Caution - Critical Burning Conditions

Extreme Burning Conditions

Clouds at 1400

>24 %

15 to 24 %

<15 %

MaxT

<70 F

70 to 80 F

>80 F

MinRH

>40

25 to 40

<25

Precip Chance

>40

20 to 40

<20

Wind

< 10 mph

10 to 15 mph

>15 mph

Wind Gust

<15 mph

15-25 mph

>25 mph

Haines Index

<4

4

>4

{Four or more} EXTREME blocks in a day equals the potential for a Critical Weather Day

MEDICAL PLAN (ICS 206 WF)

1. INCIDENT/PROJECT NAME		2. Operational Period						
Pinnacle Mountain		Date/Time 12-03-2016 0700-1900						
3. Ambulance Services								
Name	Complete Address	Phone & EMS Frequency		Level of Care ALS BLS				
Pickens County EMS	1509 Walhalla Hwy Pickens SC 29671	(864) 898-5335		X	X			
4. Air Ambulance Services								
Name	Phone	Type of Aircraft & Capability						
Med Trans	1-877-682-7828	Bell 407 ALS						
Life Flight	1-877-682-7828	Bell 407 ALS						
Regional ONE	1-877-682-7828	Bell 407 ALS						
5. Hospitals								
Name Complete Address	GPS Datum – WGS 84 Coordinate Standard Degrees Decimal Minutes DD° MM.MMM' N - Lat DD° MM.MMM' W - Long		Travel Time (To/from Incident) Air Gnd		Phone	Helipad Yes No		Level of Care Facility
	Lat:	Long:	VHF:					
ANMED HEALTH CANNON 123 W. G. Acker DR Pickens, SC 29671	34° 52.50678' N	82° 42.3733' W			(864) 878-4791	X		Community Hospital No Trauma Registry
Greenville Hospital 701 Grove RD Greenville, SC 29605	34° 49.1553' N	82° 24.7006' W			(864) 455-7000	X		Level 1 Trauma
Baptist Easley Hospital 200 Fleetwood Drive Easley, SC 29640	34° 50.4663' N	82° 36.4072' W			(864) 442-7200	X		Community Hospital No Trauma Registry
JMS Burn Center 3651 Wheeler Rd, Augusta, GA 30909	33° 28.9782' N	82° 05.4094' W			(706) 651-6661	X		Burn Center
6. Division Branch Group		Area Location Capability						
Division B	Point of Contact:		Division Supervisor Matt Christensen 435-979-1918					
	EMS Responders & Capability:		Tyla Northrop EMTF					
	Equipment Available on Scene:		BLS, ALS					
	Medical Emergency Channel:		Command, TAC 5					
Pickens County EMS Staged Ambulances Pinnacle Mountain ICP	Point of Contact:		Shift Supervisor Chris Elrod 864-423-2683					
	EMS Responders & Capability:		Kristina Duncan Paramedic Justin Thomas EMT					
	Equipment Available on Scene:		ALS, BLS					
	Medical Emergency Channel:		Command Repeater					
Division E	Point of Contact:		Division Supervisor Trevor Riding 435-406-1107					
	EMS Responders & Capability:							
	Equipment Available on Scene:							
	Medical Emergency Channel:		Command Repeater, TAC 3					
	Point of Contact:							
	EMS Responders & Capability:							
	Equipment Available on Scene:							
	Medical Emergency Channel:							
7. Prepared By (Safety Officer) Glen S. Chappell		8. Date 12-02-2016		9. Reviewed By (Operations) 10. Adam Heyder		11. Date 12-02-2016		

Medical Incident Report					
FOR ALL MEDICAL EMERGENCIES: IDENTIFY ON SCENE INCIDENT COMMANDER BY NAME AND POSITION AND ANNOUNCE "MEDICAL EMERGENCY" TO INITIATE RESPONSE FROM IMT COMMUNICATIONS/DISPATCH.					
Use items one through nine to communicate situation to communications/dispatch.					
1. CONTACT COMMUNICATIONS/DISPATCH <i>Ex: "Communications, Div. Alpha. Stand-by for Priority Medical Incident Report." (If life threatening request designated frequency be cleared for emergency traffic.)</i>					
2. INCIDENT STATUS: <i>Provide incident summary and command structure.</i>					
Nature of Injury/Illness			<i>Describe the injury (Ex: Broken leg with bleeding)</i>		
Incident Name			<i>Geographic Name + "Medical" (Ex: Trout Meadow Medical)</i>		
Incident Commander			<i>Name of IC</i>		
Patient Care			<i>Name of Care Provider (Ex: EMT Smith)</i>		
3. INITIAL PATIENT ASSESSMENT: <i>Complete this section for each patient. This is only a brief, initial assessment. Provide additional patient info after completing this 9 Line Report.</i>					
Number of Patients:	Male / Female	Age:	Weight:		
Conscious? <input type="checkbox"/> YES <input type="checkbox"/> NO = MEDEVAC!					
Breathing? <input type="checkbox"/> YES <input type="checkbox"/> NO = MEDEVAC!					
Mechanism of Injury: <i>What caused the injury?</i>					
Lat/Long (Datum WGS84) <i>Ex: N 40° 42.45' x W 123° 03.24'</i>					
4. SEVERITY OF EMERGENCY, TRANSPORT PRIORITY					
SEVERITY			TRANSPORT PRIORITY		
<input type="checkbox"/> URGENT-RED Life threatening injury or illness. <i>Ex: Unconscious, difficulty breathing, bleeding severely, 2° – 3° burns more than 4 palm sizes, heat stroke, disoriented.</i>			Ambulance or MEDEVAC helicopter. Evacuation need is IMMEDIATE.		
<input type="checkbox"/> PRIORITY-YELLOW Serious Injury or illness. <i>Ex: Significant trauma, not able to walk, 2° – 3° burns not more than 1-2 palm sizes.</i>			Ambulance or consider air transport if at remote location. Evacuation may be DELAYED.		
<input type="checkbox"/> ROUTINE-GREEN Not a life threatening injury or illness. <i>Ex: Sprains, strains, minor heat-related illness.</i>			Non-Emergency. Evacuation considered Routine of Convenience.		
5. TRANSPORT PLAN:					
Air Transport: (Agency Aircraft Preferred)					
<input type="checkbox"/> Helispot		<input type="checkbox"/> Short-haul/Hoist		<input type="checkbox"/> Life Flight	
<input type="checkbox"/> Other					
Ground Transport:					
<input type="checkbox"/> Self-Extract		<input type="checkbox"/> Carry-Out		<input type="checkbox"/> Ambulance	
<input type="checkbox"/> Other					
6. ADDITIONAL RESOURCE/EQUIPMENT NEEDS:					
<input type="checkbox"/> Paramedic/EMT(s)		<input type="checkbox"/> Crew(s)		<input type="checkbox"/> SKED/Backboard/C-Collar	
<input type="checkbox"/> Burn Sheet(s)		<input type="checkbox"/> Oxygen		<input type="checkbox"/> Trauma Bag	
<input type="checkbox"/> Medication(s)		<input type="checkbox"/> IV/Fluid(s)		<input type="checkbox"/> Cardiac Monitor/AED	
<input type="checkbox"/> Other (i.e. splints, rope rescue, wheeled litter)					
7. COMMUNICATIONS:					
Function	Channel Name/Number	Receive (Rx)	Tone/NAC *	Transmit (Tx)	Tone/NAC *
<i>Ex: Command</i>	<i>Forest Rpt, Ch. 2</i>	<i>168.3250</i>	<i>110.9</i>	<i>171.4325</i>	<i>110.9</i>
COMMAND					
AIR-TO-GRND					
TACTICAL					
*(NAC for digital radio system)					
8. EVACUATION LOCATION:					
Lat/Long (Datum WGS84) <i>EX: N 40 42.45' x W 123 03.24'</i>					
Patient's ETA to Evacuation Location:					
Helispot/Extraction Size and Hazards:					
9. CONTINGENCY:					
Considerations: <i>If primary options fail, what actions can be implemented in conjunction with primary evacuation method? Be thinking ahead...</i>				REMEMBER: Confirm ETA's of resources ordered Act according to your level of training Be Alert. Keep Calm. Think Clearly. Act Decisively.	

INCIDENT RADIO COMMUNICATIONS PLAN (ICS 205)

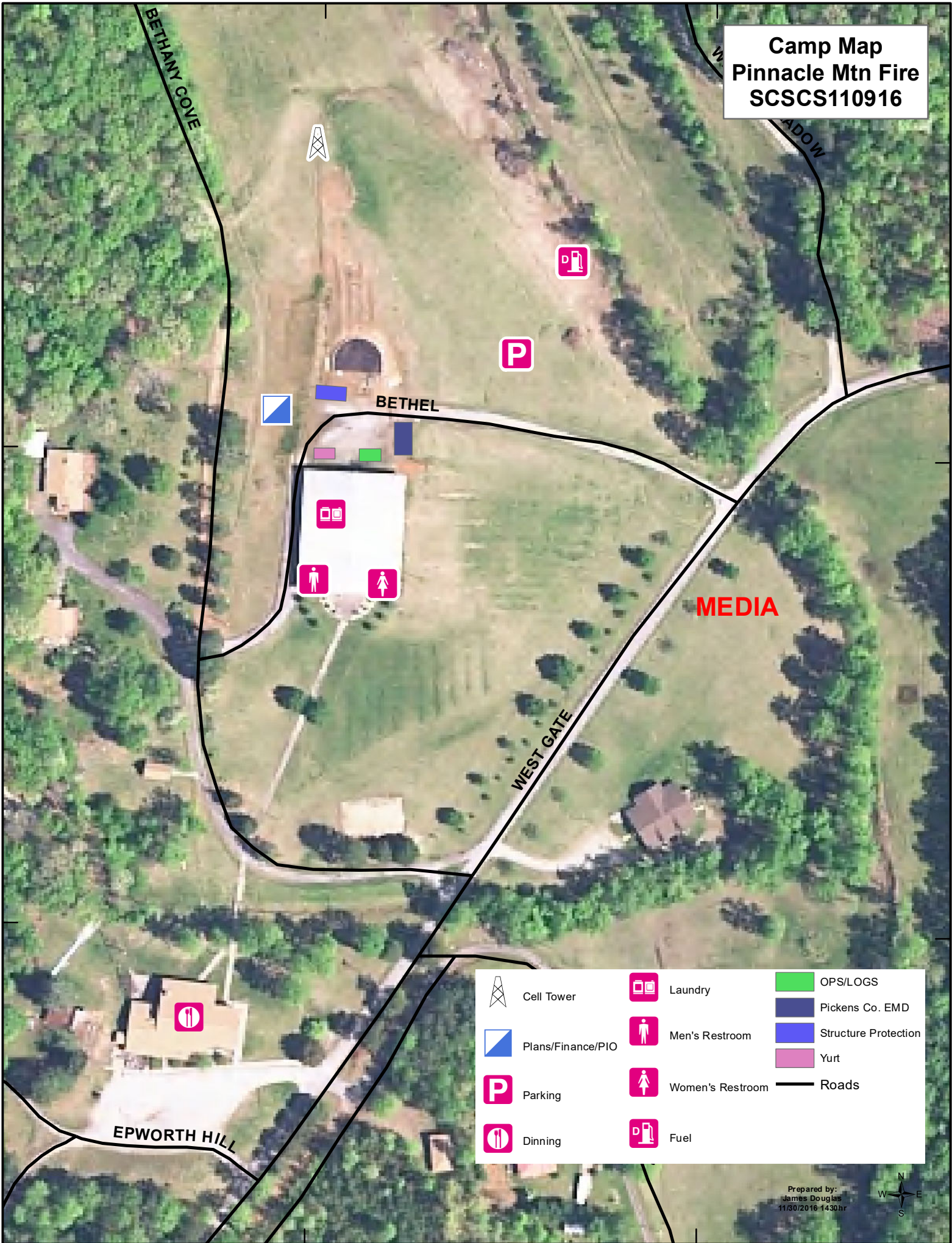
1. Incident Name:	2. Date/Time Prepared:	3. Operational Period: DAY	
PINNACLE MOUNTAIN	Date: 12/02/2016 Time: 0749	Date/Time From: 12/03/2016 0700 SAT	Date/Time To: 12/03/2016 1900 SAT

4. Basic Radio Channel Use:										
Zone Group	Ch #	Function	Channel Name/Trunked Radio System Talkgroup	Assignment	RX Freq	RX Tone/NAC	TX Freq	TX Tone/NAC	Mode (A,D, or M)	Remarks
COMMAN D		COMMAND	INCIDENT	COMMAND	159.3075 N	023 DPL	151.1825 N	023 DPL	A	
SC TAC 5		TACTICAL DIV B	SC TAC 5	DIV B	151.2800 N	203.5 HZ	151.2800 N	203.5 HZ	A	SCFC TAC 5
SC TAC 3		TACTICAL DIV E	SC TAC 3	DIV E	151.3550 N	203.5 HZ	151.3550 N	203.5 HZ	A	SCFC TAC 3
VTAC 37		STRUCTURE	VTAC 37	STRUCTURE	154.4525 N	136.5 HZ	158.5375	136.5 HZ	A	
VTAC 36		STRUCTURE	VTAC 36	STRUCTURE	151.1375 N	136.5 HZ	159.4725 N	136.5 HZ	A	
GLASSY MTN		REPEATER	GLASSY MTN	COMMAND	159.4050 N	365 DPL	151.23500	365 DPL	A	
SC TAC 6		AIR TO GROUND	SC TAC 6	AIR OPS	151.48250 N	203.5 HZ	151.48250 N	203.5 HZ	A	SCFC TAC 6
FF MOB		LOGISTICS	SC MUTUAL AID 4	FF MOB	PAL 800		PAL 800	NA	A	FIGHTER MOBILIZATION
SC TAC 2		TACTICAL DIV	SC TAC 2	DIV A/C/D/Z	151.22750 N	203.5 HZ	151.22750 N	203.5 HZ	A	SCFC TAC 2
SC TAC 4		UNASSIGNED	SC TAC 4	UNASSIGNED	151.400	203.5 HZ	151.400	203.5 HZ	A	SCFC TAC 4

5. Special Instructions:

6. Prepared By (Communications Unit Leader)	Name: TYLER MONROE	Signature:
ICS 205	IAP Page	Date/Time: 12/02/2016 0749

Camp Map
Pinnacle Mtn Fire
SCSCS110916



BETHEL

MEDIA

WEST GATE

EPWORTH HILL



Cell Tower



Laundry

OPS/LOGS



Plans/Finance/PIO



Men's Restroom

Pickens Co. EMD



Parking



Women's Restroom

Structure Protection



Dinning



Fuel

Yurt

Roads



Last Work Day Report

Incident: PINNACLE MOUNTAIN US-SC-SCS-

12/02/2016 - 12/05/2016

12/02/2016

OVERHEAD

SCKN	O-5297	CARROLL, DRAKE
------	--------	----------------

12/03/2016

OVERHEAD

PIOF	O-5440	HOLT, JUSTIN
SOFR	O-5441	BAILEY, CALVIN

12/04/2016

OVERHEAD

PIOF	O-13.11	YARDLEY, KAYLI
DIVS	O-21	MADSEN, BART
BCMG	O-13.7	SUDWEEKS, LANNCE
PSC3	O-13.8	DALTON, NONI
PSC3	O-13.12	MONROE, TYLER
ICT3	O-13.2	MATHESON, ROBERT CLAY
ICT3	O-13.1	OSTLER, BRETT
SOFR	O-13.3	CHAPPELL, GLEN
TFLD	O-13.6	RIDING, TREVOR
TIME	O-13.10	BROWER, JEFFREY
EMTF	O-13.13	NORTHRUP, TYLA
DIVS	O-13.4	HEYDER, ADAM
TFLD	O-13.5	CHRISTIANSEN, MATTHEW

12/05/2016

OVERHEAD

PIOF	O-5347	WELCH, HOLLY
HEQO	O-5443	JORDAN, STEVE
HEQO	O-5118	MARTIN, GEORGE
HEQO	O-5251	MCGILL, MICHAEL
AREP	O-24	MONEY, KEITH
HEQO	O-5444	NICHOLSON, FRANK

ICS 205A

IC/UC	Ostler, Brett	435-681-0035
IC Trainee	Matheson, Clay	435-421-2033
IC/UC	Staton, Mike	864-380-3579
Liason Officer Pickens County	Womak, Pierce	864-442-3112
Liason Officer Greenville County	Reid, Ryan	864-704-7037
SAFETY OFFICER	Chappell, Glen	435-979-8341
PUBLIC INFORMATION OFFICER	Yardley, Kayli	435-864-8676
PIOF	Welch, Holly	803-667-0867
PLANNING SECTION CHIEF	Dalton, Noni	435-201-1211
Planning Chief Trainee	Monroe, Tyler	435-979-4409
IMET	Lebo, Terry	910-547-6403
GIS Specialist	Douglas, James	803-968-4817
SCKN	Carroll, Drake	843-601-9121
LOGISTICS SECTION CHIEF	Lannce, Sudweeks	435-864-8885
Dept Logistics Chief	Owen, David	864-637-8519
SUPPLY UNIT	Jones, Jamie	864 933-4165
FINANCE SECTION CHIEF	Brower, Jeff	435-630-4243
Deputy Finance Chief	Nordeen, Cathy	803-360-2644
OPS SECTION CHIEF-Planning	Heyder, Adam	435-590-4715
OPS SECTION CHIEF-Field	Madsen, Bart	435-979-8340
Deputy OPS Chief	Cassell, Ray	864-637-9490
DIVISION A/Z C/D	Monitor Status	
DIVISION B	Christensen, Matt	435-979-1918
DIVISION E	Riding, Trevor	435-406-1107
STRUCTURE PROTECTION	Staton, Mike (Pickens Co)	864-380-3579
	Gordon, Jason (Greenville Co)	864-607-6795
SECURITY GROUP	Stone, Jeremy (Night)	864-359-5535
	Pickens County Sheriff's Office	864-898-5500
SC State Firefighter Mobilization	King, Charlie	864 784 5268

