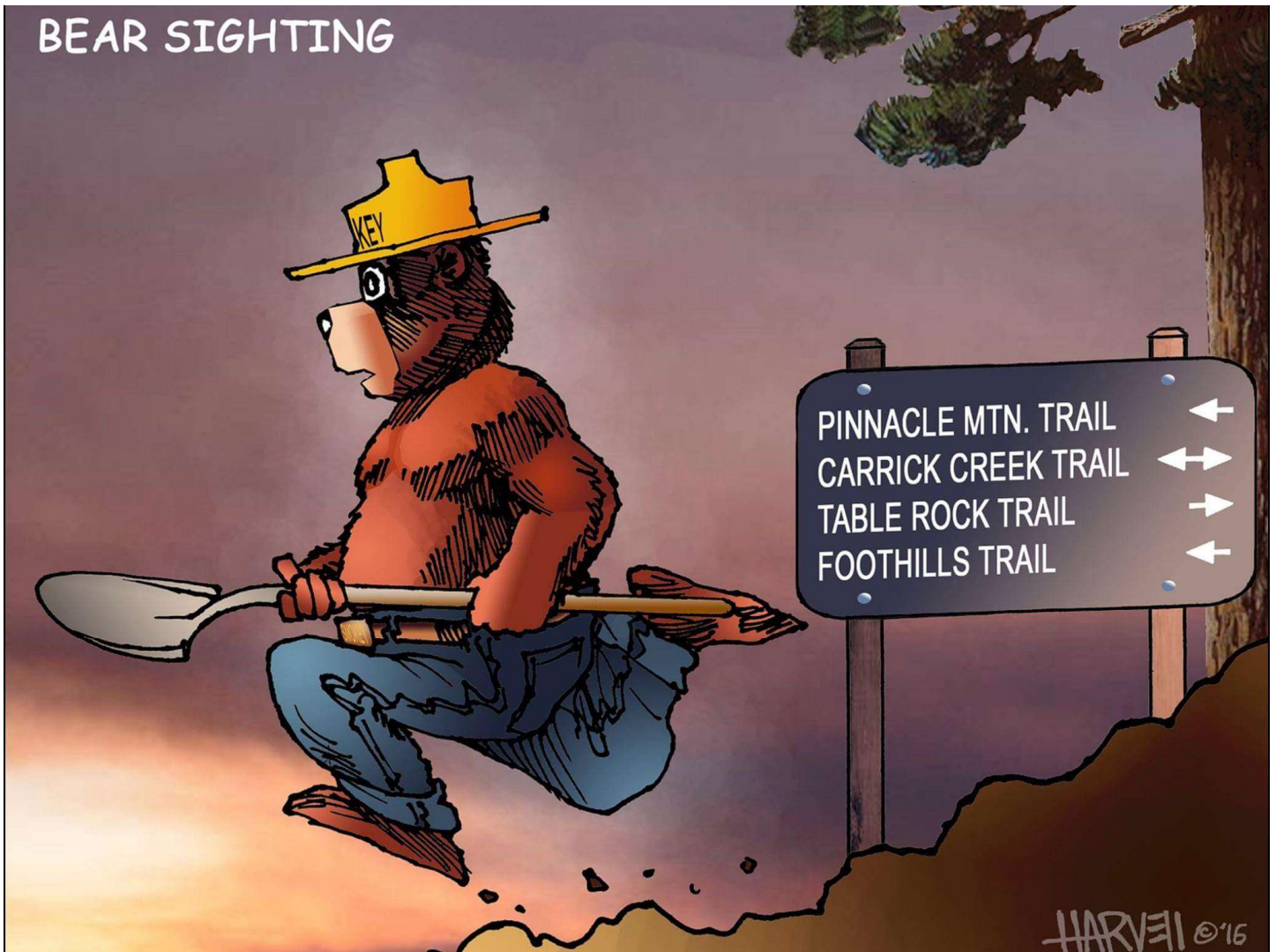


PINNACLE MTN FIRE

December 6 - 23, 2016

Daily Operational Period



INCIDENT OBJECTIVES (ICS 202)

1. Incident Name:	2. Operational Period: DAY	
PINNACLE MOUNTAIN	Date/Time From: 12/06/2016 0700 TUE	Date/Time To: 12/23/2016 1900 FRI
3. Objective(s):		
<ul style="list-style-type: none"> • Provide for safety during repair operations on the Pinnacle Mtn. Fire through a risk informed approach balancing exposure with risk. (Stop, Think, Talk then Act!) • Throughout the repair work, operations will maintain relationships with the public and stakeholders by providing timely updates on the progress of the repairs. 		
4. Operational Period Command Emphasis:		
<ul style="list-style-type: none"> • Coordinate all repair efforts with stakeholders and SCFC West Unit personnel. 		
General Situational Awareness:		
Be aware of inclement weather conditions and take appropriate action based on situational awareness.		
5. Site Safety Plan Required? Yes <input type="checkbox"/> No <input checked="" type="checkbox"/>		
Approved Site Safety Plan(s) Located at:		
6. Incident Action Plan (the items checked below are included in this Incident Action Plan):		
<input checked="" type="checkbox"/> ICS 202 <input checked="" type="checkbox"/> ICS 203 <input checked="" type="checkbox"/> ICS 204 <input checked="" type="checkbox"/> ICS 205 <input checked="" type="checkbox"/> ICS 205A <input checked="" type="checkbox"/> ICS 206	<input type="checkbox"/> ICS 207 <input type="checkbox"/> ICS 208 <input type="checkbox"/> ICS 220 <input checked="" type="checkbox"/> Map/Chart <input checked="" type="checkbox"/> Weather Forecast/Tides/Currents	Other Attachments: <input checked="" type="checkbox"/> NC REPAIR PLAN _____ <input checked="" type="checkbox"/> ICS214 _____ <input type="checkbox"/> _____ <input type="checkbox"/> _____
7. Prepared by: CHISOLM BECKHAM Position/Title: PSC3 (T)	Signature:	
8. Approved by Incident Commander:	Name:	Signature:
ICS 202	IAP Page	Date/Time:

ORGANIZATION ASSIGNMENT LIST (ICS 203)

1. Incident Name:		2. Operational Period: DAY	
PINNACLE MOUNTAIN		Date/Time From: 12/06/2016 0700 TUE	Date/Time To: 12/23/2016 1900 FRI
3. Incident Commander(s) and Command Staff:		TIME UNIT	
IC/UC	WEEKS, MICHAEL	PROCUREMENT UNIT	
SAFETY OFFICER	BAILEY, CALVIN	COMPENSATION UNIT	
INFORMATION OFFICER		COST UNIT	
4. Agency/Organization Representative(s):			
Agency/Organization	Name		
GREENVILLE WATERSHED	POOLE, HENRY		
HOLLY SPRINGS FD	STATON, MIKE		
NC FOREST SERVICE	CHEEK, MICHAEL ROGERS, ANDY		
SC DNR	HALL, MARK		
SC STATE PARKS	KNOWLAND, POLL		
5. Planning Section:			
CHIEF	UNSTAFFED		
CHIEF			
SITUATION UNIT			
RESOURCES UNIT			
GIS SPECIALIST			
SCKN			
INCIDENT METEOROLOGIST			
TRAINING SPECIALIST			
6. Logistics Section:			
CHIEF	UNSTAFFED		
DEPUTY			
SUPPLY UNIT			
FACILITIES UNIT/FOOD UNIT			
COMMUNICATIONS UNIT			
GROUND SUPPORT UNIT			
ORDERING MANAGER			
7. Operations Section:			
PLANNING OPS	CASELL, RAY		
DEPUTY FIELD OPERATIONS			
7b. Air Operations Branch:			
AIR ATTACK SUPERVISOR	TOBIAS, JIMMY		
8. Finance/Administration Section:			
CHIEF	NORDEEN, CATHY		
DEPUTY			
9. Prepared By:	Name: CHISOLM BECKHAM	Position/Title: PSC 3 (T)	Signature:
ICS 203	IAP Page	Date/Time: 12/05/2016 0804	

Division/Group Assignment List (ICS 204 WF)

1. Incident Name:			3.			
PINNACLE MOUNTAIN			Branch:		Division/Group: A	
2. Operational Period: DAY						
Date/Time From: 12/06/2016 0700 TUE		Date/Time To: 12/23/2016 1900 FRI				
4. Operations Personnel						
OPERATIONS CHIEF		CASSELL, RAY		DIVISION/GROUP SUPERVISOR		TBD
AIR ATTACK SUPERVISOR		TOBIAS, JIMMY				
5. Resources Assigned this Period						
Strike Team / Task Force / Resource Designator		LWD	Leader	Number Persons	Drop Off PT./Time	Pick Up PT./Time
ST DOZERS			TBD	3		
6. Control Operations/Work Assignments:						
<p>Coordinate repair operations with agency representatives. SCFC will Install water bars and broad-based dips. Cooperators will clean out and stabilize stream crossings, and check and repair trails. Bring fireline into compliance with SCFC BMPs.</p>						
7. Special Instructions:						
<p>Avoid stream crossings on Emory Creek area west of Pig Pen Gap Rd. SCDNR will coordinate replacement of culverts, stabilization of stream crossings, and repair of water bar turnouts.</p> <p>Be aware of hazard trees and unstable ground; avoid working when conditions are too wet; and once on scene, conduct a radio check to ensure communication with dispatch.</p> <p>Beginning Friday, December 9, 2016, and until deemed necessary, SCFC will periodically conduct aerial flights for smoke detection and potential issues along fire perimeter.</p> <p>See safety message for mitigating specific hazards.</p> <p>POC: Mark Hall: 803-331-3142</p> <p>Refer to 11 X 17 (12/6/2016) IAP Map for Retired and Maintained fire breaks (not attached).</p>						
8. Division/Group Communication Summary						
Function	Channel	RX Frequency N/W	RX Tone/NAC	TX Frequency N/W	TX Tone/NAC	Mode
COMMAND	GLASSY MTN	159.4050 N	365 DPL	151.23500	365 DPL	A
TACTICAL DIV A/B/C/D	SC TAC 3	151.35500 N	203.5 HZ	151.35500 N	203.5 HZ	A
AIR TO GROUND	SC TAC 6	151.48250 N	203.5 HZ	151.48250 N	203.5 HZ	A
9. Prepared By (Resource Unit Leader)			Approved By (Planning Section Chief)		Date	Time
BRIAN DAVIS					12/05/2016	0804

Division/Group Assignment List (ICS 204 WF)

1. Incident Name:			3.			
PINNACLE MOUNTAIN			Branch:		Division/Group: B	
2. Operational Period: DAY						
Date/Time From: 12/06/2016 0700 TUE		Date/Time To: 12/23/2016 1900 FRI				
4. Operations Personnel						
OPERATIONS CHIEF		CASSELL, RAY		DIVISION/GROUP SUPERVISOR		TBD
AIR ATTACK SUPERVISOR		TOBIAS, JIMMY				
5. Resources Assigned this Period						
Strike Team / Task Force / Resource Designator		LWD	Leader		Number Persons	Drop Off PT./Time
ST DOZERS			TBD		4	
6. Control Operations/Work Assignments:						
<p>Coordinate repair operations with agency representatives. SCFC will Install water bars and broad-based dips. Cooperators will clean out and stabilize stream crossings, and check and repair trails. Bring fireline into compliance with SCFC BMPs.</p> <p>Buzzard Mtn. Road: Stabilize and retire. Firebreak at HiLo Gap: Put in waterbars, Greenville Watershed will seed and stabilize, retain firebreak for future access/ fuel break. Heath House Rd: Repair the grade, install broad based dips, coordinate with Greenville Watershed who will stabilize critical areas with seed or silt fence. Hickory Nut Rd.: Install water bars, Greenville Watershed will clean outlets on stream crossings and stabilize critical areas with seed. Stream Crossing on South Saluda River: Evaluate, clean out, and stabilize. White Oak down to Saluda River: Install waterbars, Greenville Watershed will clean out stream crossings, stabilize, and seed critical areas. Will be retained for firebreak and future access.</p>						
7. Special Instructions:						
<p>Be aware of hazard trees and unstable ground; avoid working when conditions are too wet; and once on scene, conduct a radio check to ensure communication with dispatch.</p> <p>Beginning Friday, December 9, 2016, and until deemed necessary, SCFC will periodically conduct aerial flights for smoke detection and potential issues along fire perimeter.</p> <p>See safety message for mitigating specific hazards.</p> <p>POC: Henry Poole: 864-454-1703</p> <p>Refer to 11 X 17 (12/6/2016) IAP Map for Retired and Maintained fire breaks (not attached).</p>						
8. Division/Group Communication Summary						
Function	Channel	RX Frequency N/W	RX Tone/NAC	TX Frequency N/W	TX Tone/NAC	Mode
COMMAND	GLASSY MTN	159.4050 N	365 DPL	151.23500	365 DPL	A
TACTICAL DIV A/B/C/D	SC TAC 3	151.3550 N	203.5 HZ	151.3550 N	203.5 HZ	A
AIR TO GROUND	SC TAC 6	151.48250 N	203.5 HZ	151.48250 N	203.5 HZ	A
9. Prepared By (Resource Unit Leader)			Approved By (Planning Section Chief)		Date	Time

Division/Group Assignment List (ICS 204 WF)

1. Incident Name:			3.				
PINNACLE MOUNTAIN			Branch:		Division/Group: C		
2. Operational Period: DAY							
Date/Time From: 12/06/2016 0700 TUE		Date/Time To: 12/23/2016 1900 FRI					
4. Operations Personnel							
OPERATIONS CHIEF		CASSELL, RAY		DIVISION/GROUP SUPERVISOR		TBD	
AIR ATTACK SUPERVISOR		TOBIAS, JIMMY					
5. Resources Assigned this Period							
Strike Team / Task Force / Resource Designator		LWD	Leader		Number Persons	Drop Off PT./Time	Pick Up PT./Time
ST DOZERS			TBD		4		
6. Control Operations/Work Assignments:							
<p>Coordinate repair operations with agency representatives. Install water bars and broad-based dips; clean out and stabilize stream crossings; and check and repair trails.</p> <p>Depending which state they reside, bring fire lines into compliance with SC's BMPs and NC's Repair Plan (included with IAP).</p>							
7. Special Instructions:							
<p>Be aware of hazard trees and unstable ground; avoid working when conditions are too wet; and once on scene, conduct a radio check to ensure communication with dispatch.</p> <p>Beginning Friday, December 9, 2016, and until deemed necessary, SCFC will periodically conduct aerial flights for smoke detection and potential issues along fire perimeter.</p> <p>See safety message for mitigating specific hazards.</p> <p>POCs:</p> <ul style="list-style-type: none"> • NC Forest Service: Cheek, Michael 828-231-2691; Rogers, Andy 828-507-9123 <p>Priority Culverts: 35-05.743, -82-43.038; 35-05.800, -82-42.740</p> <p>Refer to 11 X 17 (12/6/2016) IAP Map for Retired and Maintained fire breaks (not attached).</p>							
8. Division/Group Communication Summary							
Function	Channel	RX Frequency N/W	RX Tone/NAC	TX Frequency N/W	TX Tone/NAC	Mode	
COMMAND	GLASSY MTN	159.4050 N	365 DPL	151.23500	365 DPL	A	
TACTICAL DIV A/B/C/D	SC TAC 3	151.3550 N	203.5 HZ	151.3550 N	203.5 HZ	A	
AIR TO GROUND	SC TAC 6	151.48250 N	203.5 HZ	151.48250 N	203.5 HZ	A	
9. Prepared By (Resource Unit Leader)			Approved By (Planning Section Chief)		Date	Time	

Division/Group Assignment List (ICS 204 WF)

1. Incident Name:			3.				
PINNACLE MOUNTAIN			Branch:		Division/Group: D		
2. Operational Period: DAY							
Date/Time From: 12/06/2016 0700 TUE		Date/Time To: 12/23/2016 1900 FRI					
4. Operations Personnel							
OPERATIONS CHIEF		CASSELL, RAY		DIVISION/GROUP SUPERVISOR		TBD	
AIR ATTACK SUPERVISOR		TOBIAS, JIMMY					
5. Resources Assigned this Period							
Strike Team / Task Force / Resource Designator		LWD	Leader		Number Persons	Drop Off PT./Time	Pick Up PT./Time
ST DOZERS			TBD		4		
6. Control Operations/Work Assignments:							
<p>Coordinate repair operations with agency representatives. SCFC will Install water bars and broad-based dips and provide repair plan. Cooperators will clean out and stabilize stream crossings, and check and repair trails. Bring fireline into compliance with SCFC BMPs.</p> <p>Goals</p> <p>1. Maintain critical firebreaks for access/fuel breaks. 2. Priorities:</p> <ul style="list-style-type: none"> • Critical water resources • Public Access trails. Parks will barricade and repair trail prior to allowing public access: Table Rock (1st), Carrick Creek (2nd), and Pinnacle Mountain/ Mill Creek and Ridge (3rd.) • Stabilize and retire firebreak coming in behind Wesleyan Camp from Big Bottom Rd., including seeding and large water bars. 							
7. Special Instructions:							
<p>BMP will conduct site visit to evaluate specific risks. (Thursday, Dec. 8th @ 9:30 A.M.) Seed mix recommendation will be provided by SCFC BMP Forester within repair plan.</p> <p>Be aware of hazard trees and unstable ground; avoid working when conditions are too wet; and once on scene, conduct a radio check to ensure communication with dispatch. Beginning Friday, December 9, 2016, and until deemed necessary, SCFC will periodically conduct aerial flights for smoke detection and potential issues along fire perimeter. See safety message for mitigating specific hazards.</p> <p>POC: Knowland, Poll 864-483-4464</p> <p>Refer to 11 X 17 (12/6/2016) IAP Map for Retired and Maintained fire breaks (not attached).</p>							
8. Division/Group Communication Summary							
Function	Channel	RX Frequency N/W	RX Tone/NAC	TX Frequency N/W	TX Tone/NAC	Mode	
COMMAND	GLASSY MTN	159.4050 N	365 DPL	151.23500	365 DPL	A	
TACTICAL DIV A/B/C/D	SC TAC 3	151.3550 N	203.5 HZ	151.3550 N	203.5 HZ	A	
AIR TO GROUND	SC TAC 6	151.48250 N	203.5 HZ	151.48250 N	203.5 HZ	A	
9. Prepared By (Resource Unit Leader)			Approved By (Planning Section Chief)		Date	Time	

Safety Message for Regional IAP

Major Hazards and Risks:

- **DOZERS:** **Operate** within machine and driver capabilities. Maintain equipment by performing a preventative maintenance check daily before operational shift.
- **DRIVING:** Observe posted speed limits, drive defensively, and watch out for traffic on hwy. 11. Dirt roads on the fire have become slick where disturbed by heavy equipment prior to the rain.
- **SNAGS:** Are present in all divisions. As **mop up** begins to wind down and rehab begins, be on the lookout for hazard trees that may have been missed or have **deteriorated** over time and have become dangerous.

Remember your safety mitigations:

- **PPE:** You are **REQUIRED** to use it for your personal safety. Everyone wants you to return to your home the same way you left it.
- **Monitoring of Weather:** As the Weather is constantly changing, take frequent weather observations.
- **Overhead Hazards:** Do not focus solely on what is on the ground. Regularly look up for snags, dead limbs and tops.
- **Lookouts:** Position and communicate with lookouts. Utilize “close in” lookouts for local hazards.
- **Hydration:** Drink plenty of water even if you don’t feel thirsty.
- **Mechanical Equipment:** Ensure that no personnel are working below dozers, Remember that the hazard zone around those pieces of equipment extends for a minimum of 2½ times the tree height.

Incident WORD of the Day:

COMPLACENCY:

It’s up to each of us to control and eliminate complacency. Challenge yourself to focus on the task at hand, maintain a positive attitude, continue to work as a productive member toward the objectives, and encourage fellow workers to adhere to all the safety fundamentals.

**Prepared for PINNACLE MOUNTAIN INCIDENT BY SAFETY OFFICER
Calvin Bailey on 4 December 2016.**

INCIDENT RADIO COMMUNICATIONS PLAN (ICS 205)

1. Incident Name:			2. Date/Time Prepared:			3. Operational Period: DAY				
PINNACLE MOUNTAIN			Date: 12/05/2016 Time: 0804			Date/Time From: 12/06/2016 0700 TUE			Date/Time To: 12/23/2016 1900 FRI	
4. Basic Radio Channel Use:										
Zone Group	Ch #	Function	Channel Name/Trunked Radio System Talkgroup	Assignment	RX Freq	RX Tone/NAC	TX Freq	TX Tone/NAC	Mode (A,D, or M)	Remarks
GLASSY MTN	GLASSY	COMMAND	GLASSY MTN	COMMAND	159.4050 N	365 DPL	151.2350 N	365 DPL	A	REPEATER
SC TAC 3	SC TAC	TACTICAL	SC TAC 3	TACTICAL	151.3550 N	203.5 HZ	151.3550 N	203.5 HZ	A	SCFC TAC 3
SC TAC 6	SC TAC	AIR TO GROUND	SC TAC 6	UNASSIGNED	151.48250	203.5	151.48250 N	203.5 HZ	A	SCFC TAC 6
5. Special Instructions:										
6. Prepared By (Communications Unit Leader)			Name: SCOTT PHILLIPS				Signature:			
ICS 205			IAP Page				Date/Time: 12/05/2016 0804			

ICS 205A

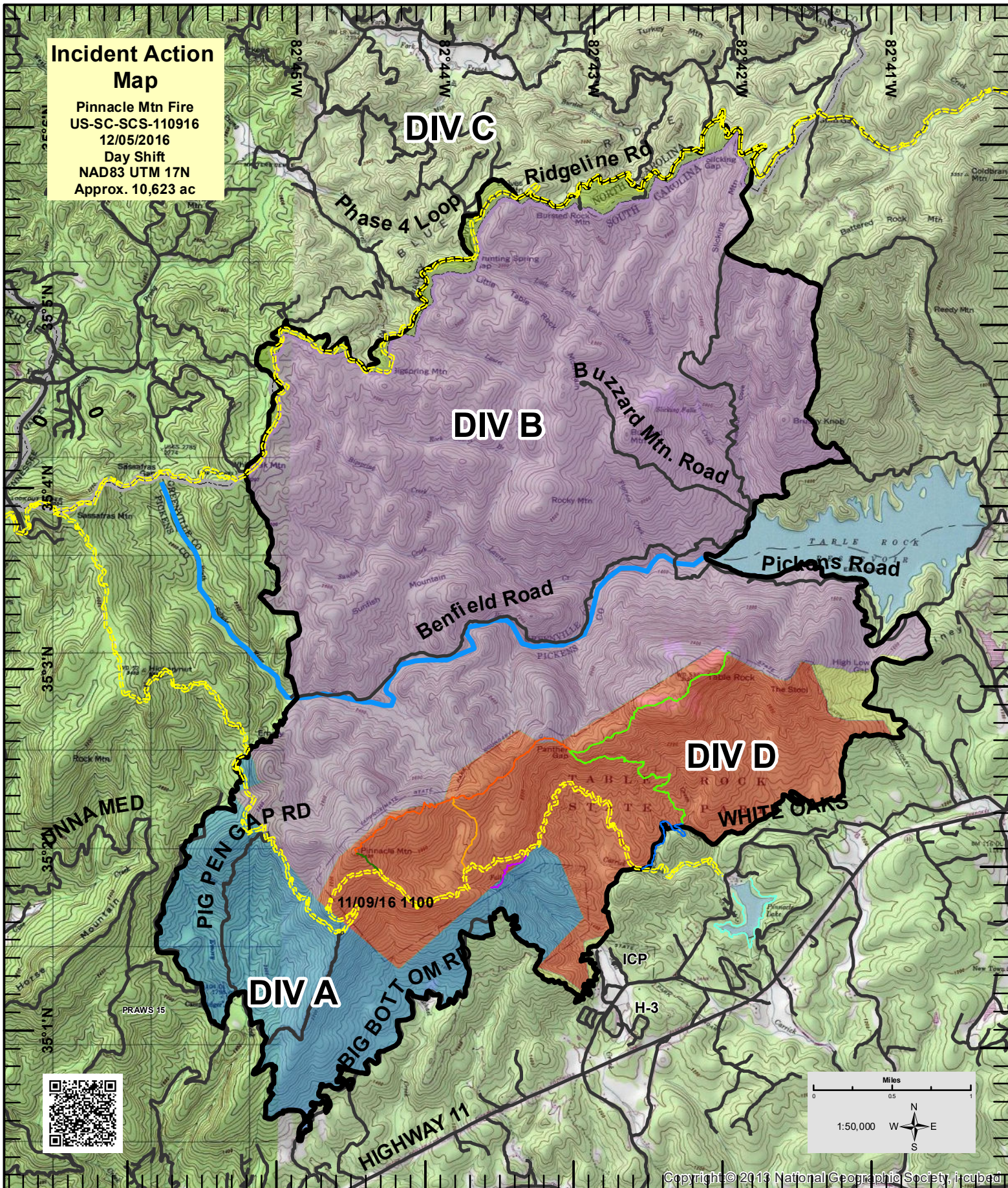
IC	Weeks, Michael	864-910-0052
Operations Chief	Cassell, Ray	864-637-9490
Air Support Supervisor	Tobias, Jimmy	864-909-0142
Strike Team Leader	Brucke, Jerrod	864-557-0065
Greenville Watershed	Poole, Henry	864-454-1703
NC Forest Service	Cheek, Michael	828-231-2691
NC Forest Service	Rogers, Andy	828-507-9123
SC DNR	Hall, Mark	803-331-3142
SC State Parks	Knowland, Poll	864-483-4464
FINANCE SECTION CHIEF	Nordeen, Cathy	803-360-2644
STRUCTURE PROTECTION	Staton, Mike (Pickens Co)	864-380-3579
	Gordon, Jason (Greenville Co)	864-607-6795
SECURITY GROUP	Kirby, Matt (Night)	864-643-6301
	Pickens County Sheriff's Office	864-898-5500
SC State Firefighter Mobilization	King, Charlie	864 784 5268

MEDICAL PLAN (ICS 206 WF)

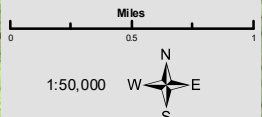
1. INCIDENT/PROJECT NAME		2. Operational Period				
Pinnacle Mountain		Date/Time 12-06-2016 - 12-23-2016				
3. Ambulance Services						
Name	Complete Address	Phone & EMS Frequency		Level of Care		
				ALS	BLS	
Pickens County EMS	1509 Walhalla Hwy Pickens SC 29671	(864) 898-5335		X	X	
4. Air Ambulance Services						
Name	Phone	Type of Aircraft & Capability				
Med Trans	1-877-682-7828	Bell 407 ALS				
Life Flight	1-877-682-7828	Bell 407 ALS				
Regional ONE	1-877-682-7828	Bell 407 ALS				
5. Hospitals						
Name Complete Address	GPS Datum – WGS 84 Coordinate Standard Degrees Decimal Minutes DD° MM.MMM' N - Lat DD° MM.MMM' W - Long	Travel Time (To/from Incident) Air Gnd		Phone	Helipad Yes No	Level of Care Facility
	Lat: 34° 52.50678' N Long: 82° 42.3733' W VHF:					
ANMED HEALTH CANNON 123 W. G. Acker DR Pickens, SC 29671		5 Minutes	15 Minutes	(864) 878-4791	X	Community Hospital No Trauma Registry
Greenville Hospital 701 Grove RD Greenville, SC 29605	Lat: 34° 49.1553' N Long: 82° 24.7006' W VHF:	15 Minutes	45 Minutes	(864) 455-7000	X	Level 1 Trauma
Baptist Easley Hospital 200 Fleetwood Drive Easley, SC 29640	Lat: 34° 50.4663' N Long: 82° 36.4072' W VHF:	20 Minutes	23 Minutes	(864) 442-7200	X	Community Hospital No Trauma Registry
JMS Burn Center 3651 Wheeler Rd, Augusta, GA 30909	Lat: 33° 28.9782' N Long: 82° 05.4094' W VHF:	1.5 Hour	3.5 Hours	(706) 651-6661	X	Burn Center
6. Division Branch Group Area Location Capability						
Alpha	Point of Contact:		Piedmont Dispatch			
	EMS Responders & Capability:					
	Equipment Available on Scene:					
	Medical Emergency Channel:					
Bravo	Point of Contact:		Piedmont Dispatch			
	EMS Responders & Capability:					
	Equipment Available on Scene:					
	Medical Emergency Channel:					
Charlie	Point of Contact:		Piedmont Dispatch			
	EMS Responders & Capability:					
	Equipment Available on Scene:					
	Medical Emergency Channel:					
Delta	Point of Contact:		Piedmont Dispatch			
	EMS Responders & Capability:					
	Equipment Available on Scene:					
	Medical Emergency Channel:					
7. Prepared By (Safety Officer) Calvin Bailey		8. Date 12-05-2016	9. Reviewed By (Operations) 10. Pete Stuckey		11. Date 12-05-2016	

Incident Action Map

Pinnacle Mtn Fire
 US-SC-SCS-110916
 12/05/2016
 Day Shift
 NAD83 UTM 17N
 Approx. 10,623 ac



11/09/16 1100



Copyright © 2013 National Geographic Society, i-cubed

- | | | | |
|---|----------------------|------------------------------|--------------------------------|
| 20161202_2249_Pinnacle_Mountain_HeatPerimeter | State Boundary | South Saluda River | Mill Creek Falls Spur, 0.4 mil |
| Roads | Foothills Trail | Mill Creek Pass, 0.6 mil | Pinnacle Mtn Trail, 0.2 mil |
| CCC Lakeside Trail, 1.5 mil | Ridge Trail, 1.9 mil | Carrick Creek Trail, 0.8 mil | Table Rock Trail, 3.1 mil |



Prepared by:
 James Douglas
 12/05/2016 0600hr



INCIDENT Weather Forecast



FORECAST NO: 22
PREDICTION FOR: Tuesday
SHIFT DATE: December 6
TIME AND DATE
FORECAST ISSUED: 1630 December 5, 2016

NAME OF FIRE: Pinnacle Mountain
UNIT: South Carolina Forestry Commission
SIGNED: Terry Lebo
Incident Meteorologist

WEATHER DISCUSSION: Low pressure will move through the Tennessee Valley this morning, dragging a cold front across the area. Another, stronger cold front will move across the area early Wednesday. Although this front is likely to pass dry it will usher in the coldest air mass of the season. Temperatures 10-20 degrees below normal are expected for the end of the week. A gradual warming trend is expected early next week as the arctic high starts to modify and moves off the east coast. Southerly winds early next week will spread warm moist air over the southeast, setting up another chance of rain by mid-week.

WEATHER FORECAST For 2150 ft

WEATHER: Showers through midday then cloudy, becoming partly cloudy overnight. Rainfall 0.25"-0.50"
TEMPERATURES: Today's High 51-56 Tonight's Low 42-47
HUMIDITY: Today's Min 85-90% Tonight's Max 90-95%
20 FT WINDS: East-southeast winds 6-10 mph with gusts to 15 mph becoming west-northwest 10-15 mph with gusts 15 to 20 mph in the afternoon and continuing overnight.

HAINES INDEX: 3
LAL 1
MIXING HEIGHT: Around 1000 feet.
TRANSPORT WINDS: Southeast 19 mph.

OUTLOOK FOR WEDNESDAY: Partly cloudy. Max temp 52-57. Min RH 65-70%. East to southeast winds 5-8 mph. Haines: 3. LAL 1.

OUTLOOK FOR WEDNESDAY NIGHT: Cloudy with a 20% chance of showers. Min temp 38-43. Max RH 80-85%. Southwest winds 5-10 mph. Rainfall less than 0.05"

OUTLOOK FOR THURSDAY: Partly cloudy. Max temp 43-48. Min RH 45-50%. Northwest winds 6-10 mph with gusts 15-20 mph in the afternoon. Haines: 3. LAL 1.

OUTLOOK FOR THURSDAY NIGHT: Clear. Min temp 20-25. Max RH 40-45%. Northwest winds 6-10 mph with gusts around 15 mph.

EXTENDED FORECAST:

FRIDAY: Sunny. Max temp 32-37. Min temp 18-23. Min RH 20-25%. North to northwest winds 8-12 mph with gusts 15 to 20 mph.

SATURDAY: Mostly sunny with increasing afternoon clouds. Max temp 35-40. Min temp 25-30. Min RH 25-30%. West-southwest winds 5-10 mph with afternoon gusts around 15 mph.

SUNDAY: Partly cloudy. Max temp 43-48. Min temp 38-43. Min RH 40-45%. Southwest winds 5-10 mph with gusts to 20 mph.

OUTLOOK FOR MONDAY 12/12/16-WEDNESDAY 12/21/2016

Low pressure will develop along a front stalled northwest of the area Monday, 12/12. The low will move northeast through the Great Lakes Region Sunday night, dragging a cold front and showers into the Carolinas Monday. The front lingers in the region into Tuesday when a weak wave develops along the boundary and moves everything to the east. Rainfall will be 0.25"-0.50". Near normal temperatures and dry conditions are expected Tuesday into Wednesday. However the dry conditions will be short lived. Another area of low pressure will pass to the north Tuesday night, dragging a cold front across the region early late Wednesday, 12/15. Showers ahead of the front will bring anywhere from 0.50" to 1.00" to the southeast. An arctic air mass behind the front will drop temperatures well below normal for the weekend of 12/17 and 12/18 along with drying the region out. Light rain is possible Tuesday 12/20 and Wednesday 12/21 but it is more likely that skies will just be cloudy.

Pinnacle Mountain Fire

North Carolina

Repair Plan

12/02/2016

Current Situation

The Pinnacle Mountain Fire burned 10,560 acres including 170 acres into North Carolina. The fire burned into Headwaters State Forest. The streams that begin on this forest support 60 miles of “High Quality Trout Water”. This area is also transected by the Foothills Trail system.

To protect the water resources on the Head Waters State Forest NCFS has proposed the following repair standards. These standards are supported by the NC Forest Service BMP Manual.

Repair Objectives

1. Firelines constructed will be repaired to prevent water quality degradation, to satisfy regulatory requirements, and to correct a safety hazard.
2. Coordinate repair strategies with the NC Forest Service and Head Waters State Forest.

Suppression Repair Strategies

Control Lines

Erosion and Sedimentation Control on Firelines

Waterbars, turnouts, or other suitable diversions will be constructed on firelines where needed to divert runoff and prevent sedimentation from entering into streams. Diversions will be spaced apart according to slope (more diversions on steeper ground). General spacing recommendations for diversions are found in the NC Forestry BMP Manual (table 5.1 below) and the NC Forestry BMP Field Guide.

Suggested Spacing Ranges for BMP Tools to Control Runoff

Slope Grade (percent)	Broad-based dips, Turnouts, Cross-drains (feet)	Waterbars (feet)
20 +	60 to 40	40 to 30
16 to 20	100 to 60	60 to 40
11 to 15	140 to 100	80 to 60
6 to 10	180 to 140	100 to 80
0 to 5	250+ to 180	120+ to 100

Figure 5.1 North Carolina Forestry BMP Manual – Amended 2006

Specific Road Repair Details:

The existing road that was utilized and as a fire line should have the broad based dips cleaned out to prevent erosion of the road. The current road has an adequate amount of old dips in the road that need to be re-opened so that they function properly. During the fireline/road opening operation several places on the road was berm up with dirt from the dozers. This berm should be graded back to level with the road to prevent allow proper runoff from the road.

Stream crossing (these are all existing culverts on the road):

Stream crossing areas along the road should be seeded and mulched with straw to prevent loose sediment from reaching the stream channel. A minimum of 50' on each side of these culverts should be seeded with an appropriate seed mixture for the time of the year. (See table below for appropriate rates) If sediment was pushed off into these streams they should be removed from the stream channel before Repair.

Priority Culverts

- 1) 35° 05.743
82° 43.038

- 2) 35° 05.800
82° 42.740

BMPs for Seeding of Vegetation

- Use seed or mixtures adapted for the site and soil conditions:
 - Refer to the suggested seeding options provided in Table 11-1.
 - Avoid the use of plants that historically have shown to become pests in a forest environment. These plants typically have little or no ecological value and in some cases can hinder long-term forest management.

- Spread seed evenly across the selected area during a time when adequate soil moisture and site conditions allow successful germination and growth:
 - If conditions do not allow, use temporary measures, such as mulch until seed and/or vegetation can successfully establish on the site.

**Table 11-1: Seeding Options for North Carolina Forestry Operations
Spring Application Mix**

<p>Generic soil additive amounts for all seasons:</p> <p>Fertilizer: 400 pounds per acre with 10-10-10.</p> <p>Lime: 2,000 pounds per acre with ground 'agricultural' lime.</p> <p>Conversions: Pounds (#) of fertilizer that provide 1.0# of nitrogen per 1,000 sq.ft.: 20# of 5-5-5. 20# of 5-10-5. 20# of 5-10-10. 10# of 10-10-10. 12.5# of 8-8-8. 6.25# of 16-0-0.</p>	Creeping Red Fescue	20 pounds / acre	
	Red Clover	10 pounds / acre	
	Oats	1 to 2 bags / acre	
	Summer Application for Temporary Cover		
	German Foxtail or Browntop Millet	25 pounds / acre	
	Early Fall Application Mix		
	Creeping Red Fescue	20 pounds / acre	
	Red Clover	10 pounds / acre	
	Wheat	1 to 2 bags / acre	
	Late Fall Application Mix		
	Creeping Red Fescue	20 pounds / acre	
	Annual Ryegrass	10 pounds / acre	
	Rye	1 to 2 bags / acre	
	Winter Application for Temporary Cover		
	Annual Ryegrass	20 pounds / acre	

Grain Application Notes:

Fire Suppression Trash

Remove all flagging and trash from hand lines and other areas. Remove all trash and flagging from road corridors and staging areas.

Timeline

Repairs will be scheduled in geographic areas that will not compromise the continued suppression effort.

