

85°50.5'W 85°50'W 85°49.5'W 85°49'W 85°48.5'W 85°48'W 85°47.5'W 85°47'W 85°46.5'W 85°46'W

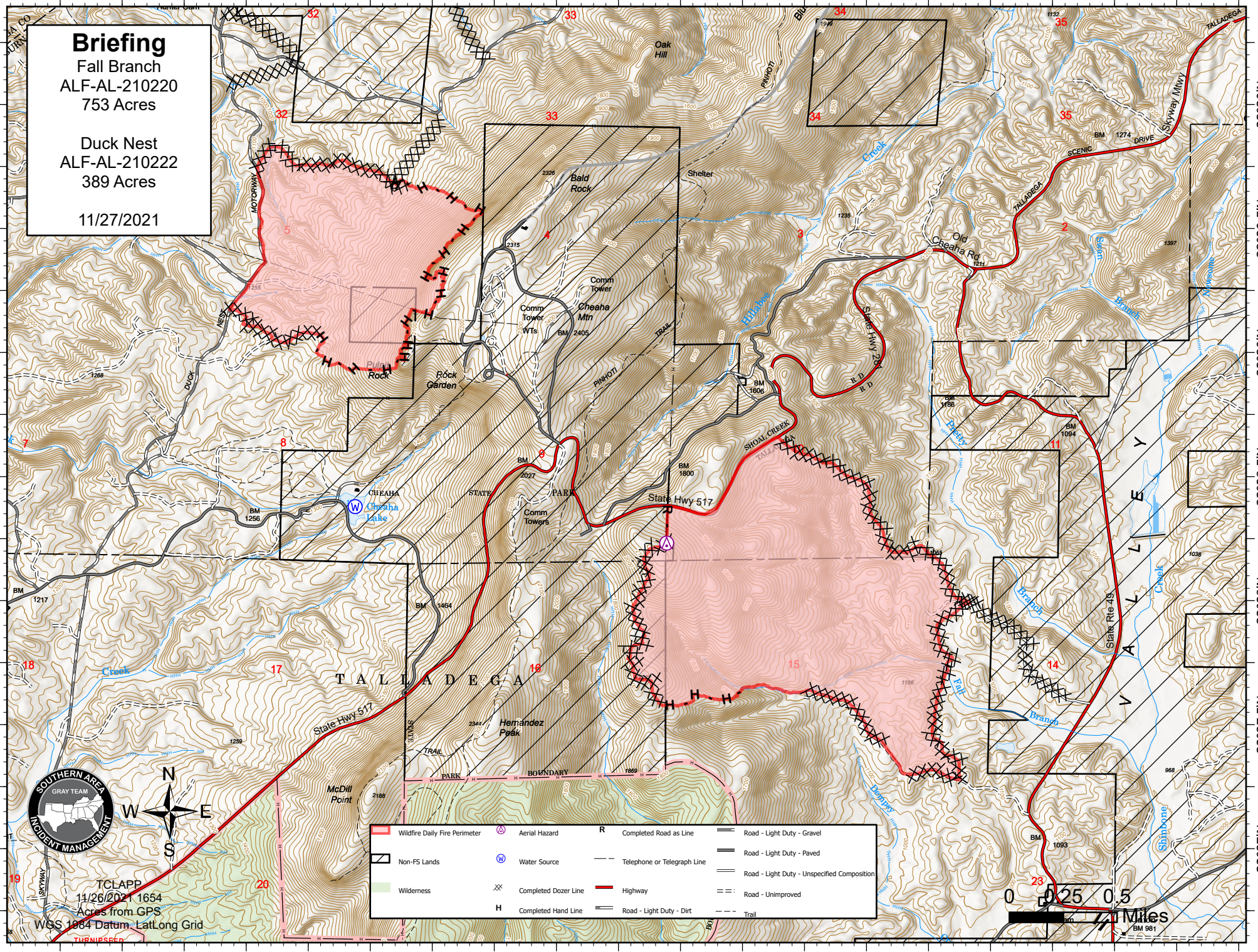
33°30'N  
33°29.5'N  
33°29'N  
33°28.5'N  
33°28'N  
33°27.5'N  
33°27'N

33°30'N  
33°29.5'N  
33°29'N  
33°28.5'N  
33°28'N  
33°27.5'N  
33°27'N

**Briefing**  
Fall Branch  
ALF-AL-210220  
753 Acres

Duck Nest  
ALF-AL-210222  
389 Acres

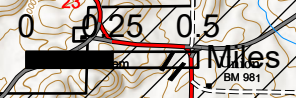
11/27/2021



TCLAPP  
11/26/2021 1654  
Acres from GPS

WGS 1984 Datum Lat/Long Grid

	Wildfire Daily Fire Perimeter		Aerial Hazard	<b>R</b>	Completed Road as Line		Road - Light Duty - Gravel
	Non-FS Lands		Water Source		Telephone or Telegraph Line		Road - Light Duty - Paved
	Wilderness		Completed Dozer Line		Highway		Road - Light Duty - Unspecified Composition
	Completed Hand Line		Road - Light Duty - Dirt		Trail		Road - Unimproved



85°50.5'W 85°50'W 85°49.5'W 85°49'W 85°48.5'W 85°48'W 85°47.5'W 85°47'W 85°46.5'W 85°46'W