

85°50.5'W 85°50'W 85°49.5'W 85°49'W 85°48.5'W 85°48'W 85°47.5'W 85°47'W 85°46.5'W 85°46'W

33°30'N
33°29.5'N
33°29'N
33°28.5'N
33°28'N
33°27.5'N
33°27'N

33°30'N
33°29.5'N
33°29'N
33°28.5'N
33°28'N
33°27.5'N
33°27'N

Briefing
Fall Branch
ALF-AL-210220
753 Acres

Duck Nest
ALF-AL-210222
389 Acres

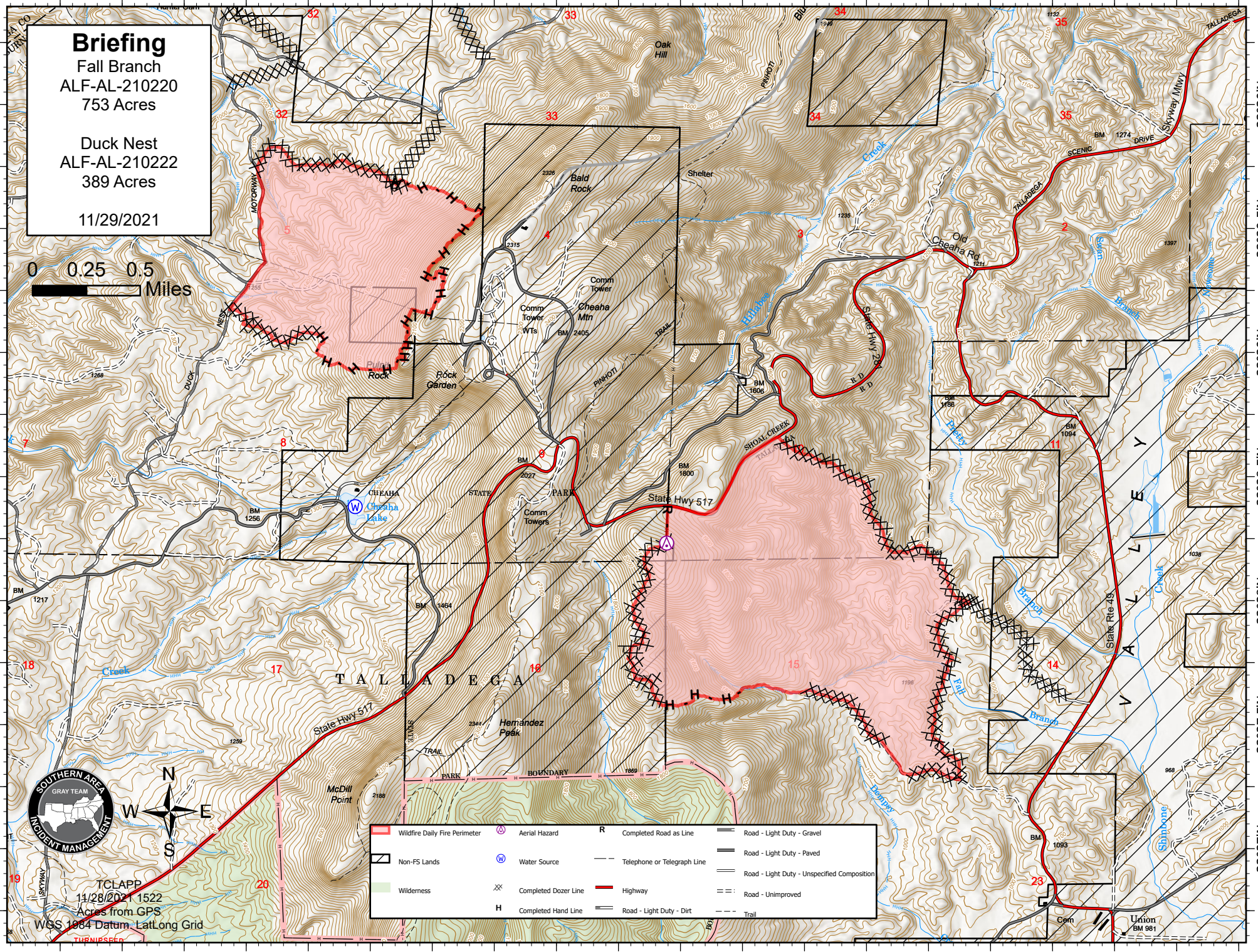
11/29/2021

0 0.25 0.5
Miles



TCLAPP
11/28/2021 1522
Acres from GPS
WGS 1984 Datum Lat/Long Grid

	Wildfire Daily Fire Perimeter		Aerial Hazard	R	Completed Road as Line		Road - Light Duty - Gravel
	Non-FS Lands		Water Source		Telephone or Telegraph Line		Road - Light Duty - Paved
	Wilderness		Completed Dozer Line		Highway		Road - Light Duty - Unspecified Composition
	Completed Hand Line		Road - Light Duty - Dirt		Trail		Road - Unimproved



85°50.5'W 85°50'W 85°49.5'W 85°49'W 85°48.5'W 85°48'W 85°47.5'W 85°47'W 85°46.5'W 85°46'W