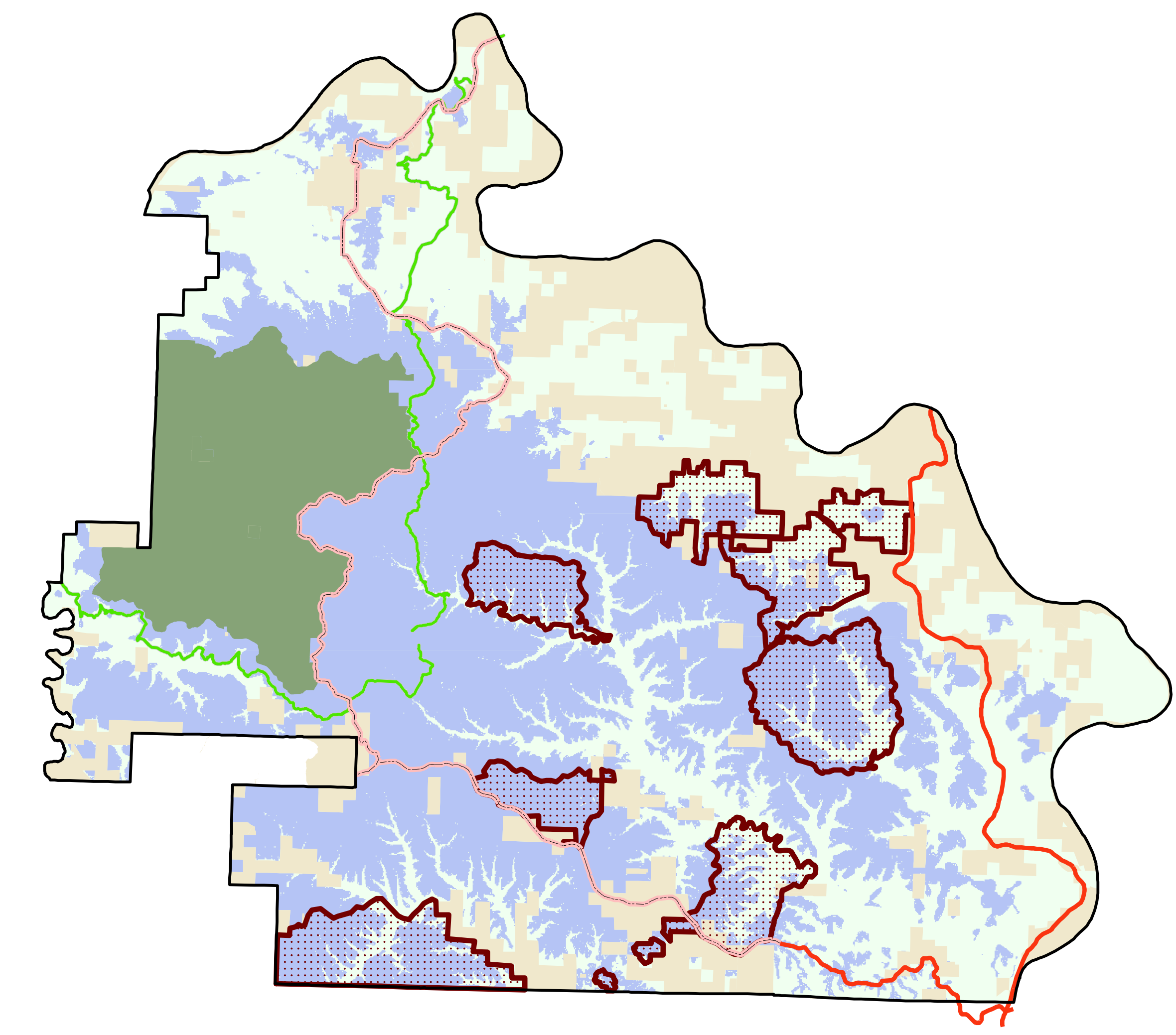
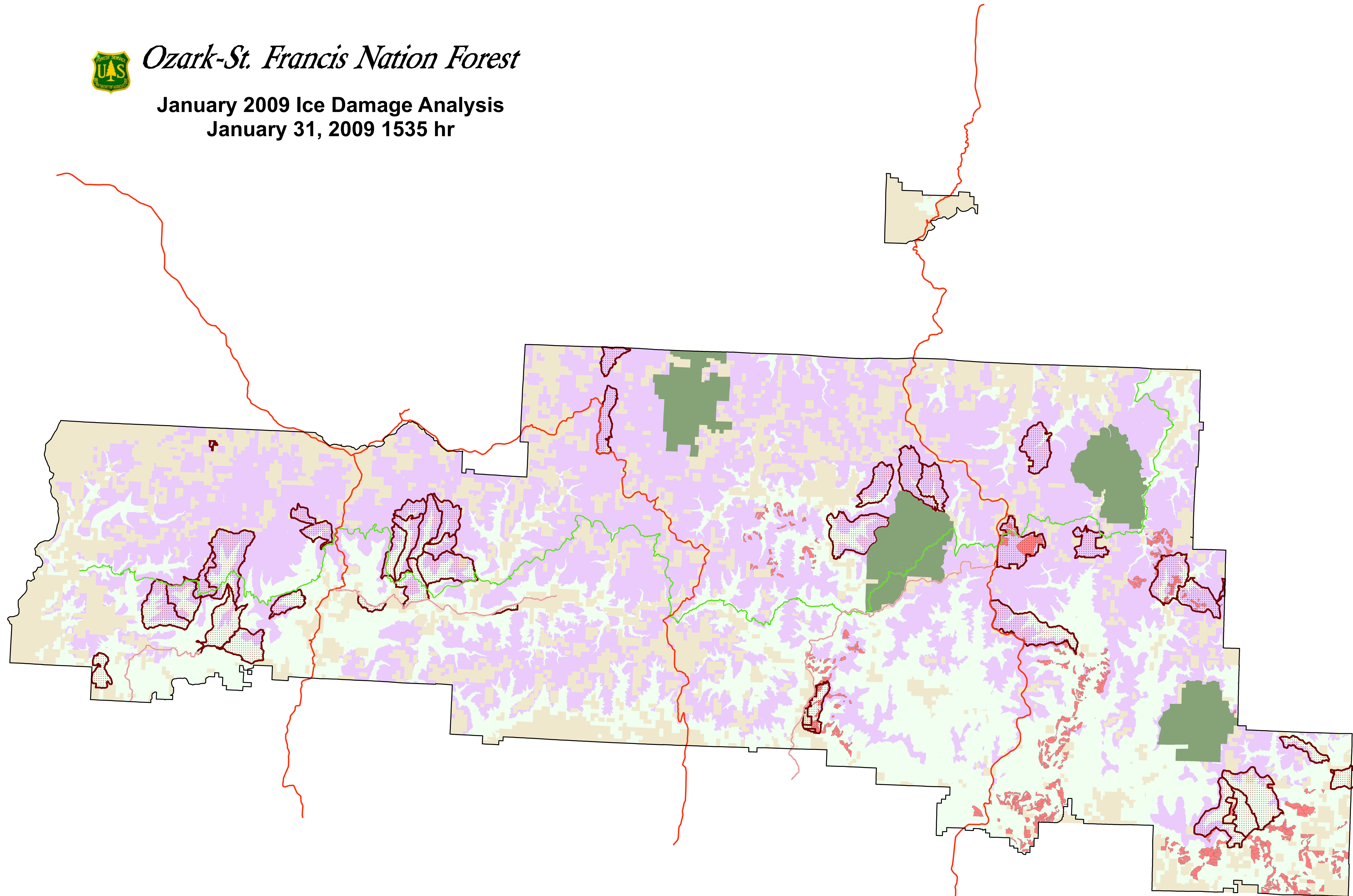




Ozark-St. Francis Nation Forest

January 2009 Ice Damage Analysis
January 31, 2009 1535 hr



- Proposed Scenic Byway
- Scenic Byway
- Private Land
- Forest Service Land
- Ozark Highlands Trail Corridor
- Wilderness
- FY 2009 Planned RxBurns
 - Big Piney* - 43,254 ac
 - Pleasant Hill* - 15,485 ac
 - Boston Mountain* - 15,485 ac
 - Sylamore* - 19,369 ac
- Big Piney Timber Sales
(active, mared not sold, and layout not marked)
- Sylamore RD - Greater than 800 ft Elevation - 81,344 ac
- Main Division - Greater than 1400 ft Elevation - 473,933 ac

