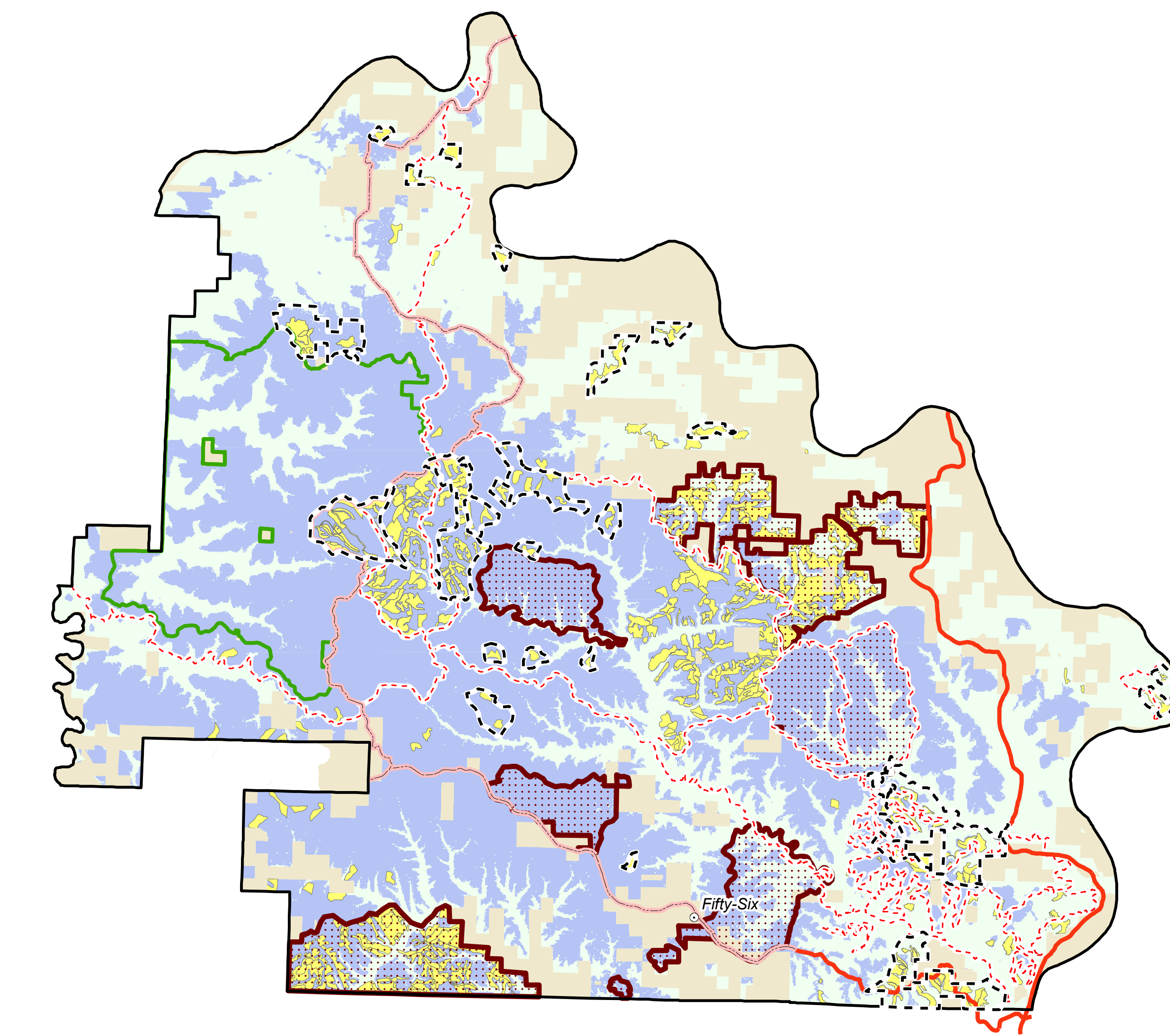
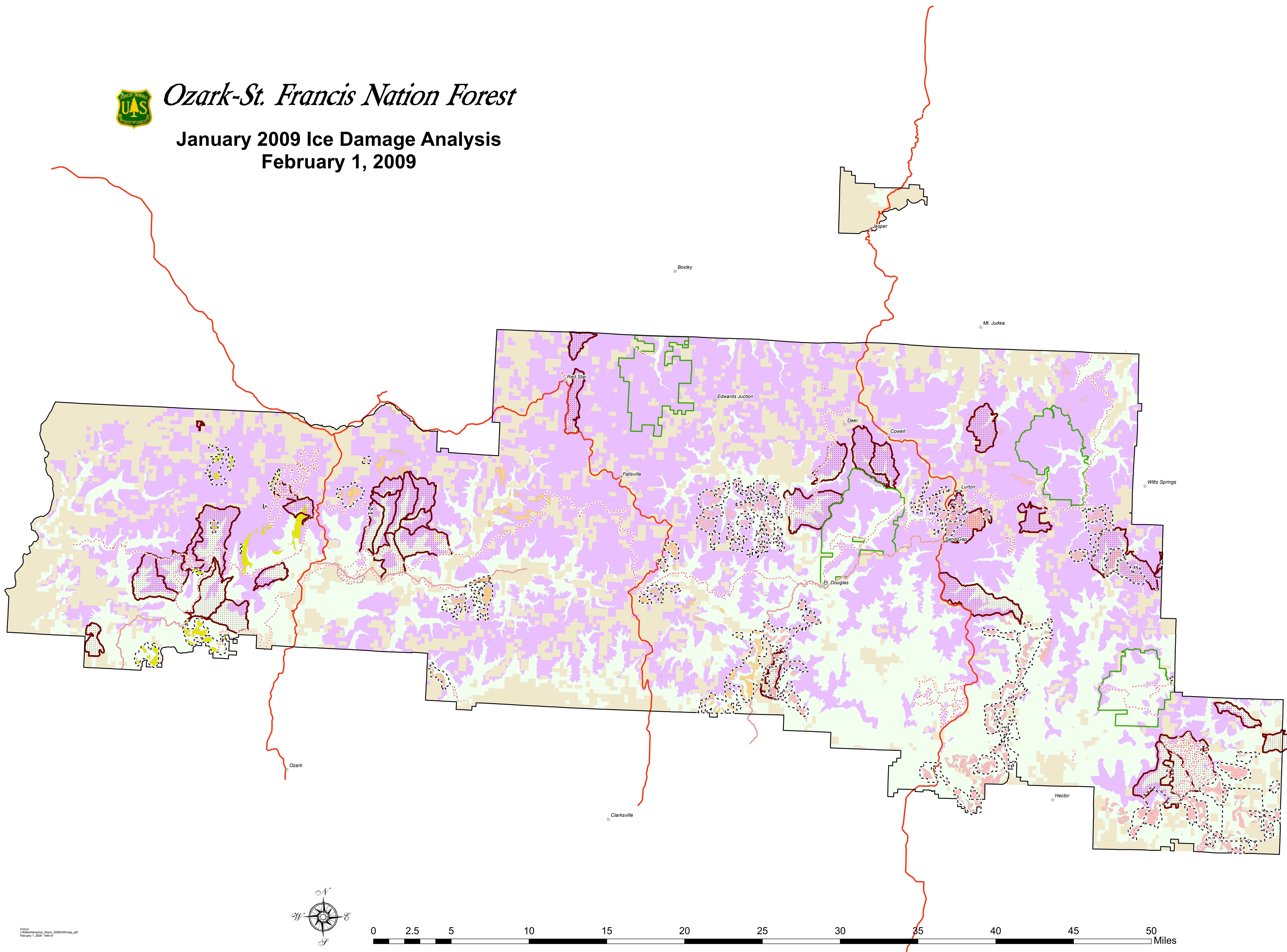




Ozark-St. Francis Nation Forest

January 2009 Ice Damage Analysis February 1, 2009



- Trails
- Proposed Scenic Byway
- Scenic Byway
- Private Land
- Forest Service Land
- Ozark Highlands Trail Corridor
- Wilderness
- FY 2009 Planned RxBurns
 - Big Piney - 43,254 ac*
 - Pleasant Hill - 15,485 ac*
 - Boston Mountain - 15,485 ac*
 - Sylamore - 19,369 ac*
- Sale Area Boundary

- Timber Sale Units
(active, marked not sold, and layout not marked)**
- Big Piney - 21,239 ac
 - Boston Mountain - 3,513 ac
 - Pleasant Hill - 5,740 ac
 - Sylamore - 11,485 ac

	Main Division - Greater than 1400 ft Elevation 441,551 acres on general forest lands 32,382 acres within wilderness		Sylamore RD - Greater than 800 ft Elevation 68,850 acres on general forest lands 12,494 acres within wilderness
473,933 total acres		81,344 total acres	

