

Ozark-St. Francis Nation Forest

Sylamore Ranger District
 January 2009 Ice Damage Analysis
 February 1, 2009



FY 2009 Planned RxBurns
 Big Piney - 43,254 ac
 Pleasant Hill - 15,485 ac
 Boston Mountain - 15,485 ac
 Sylamore - 19,369 ac

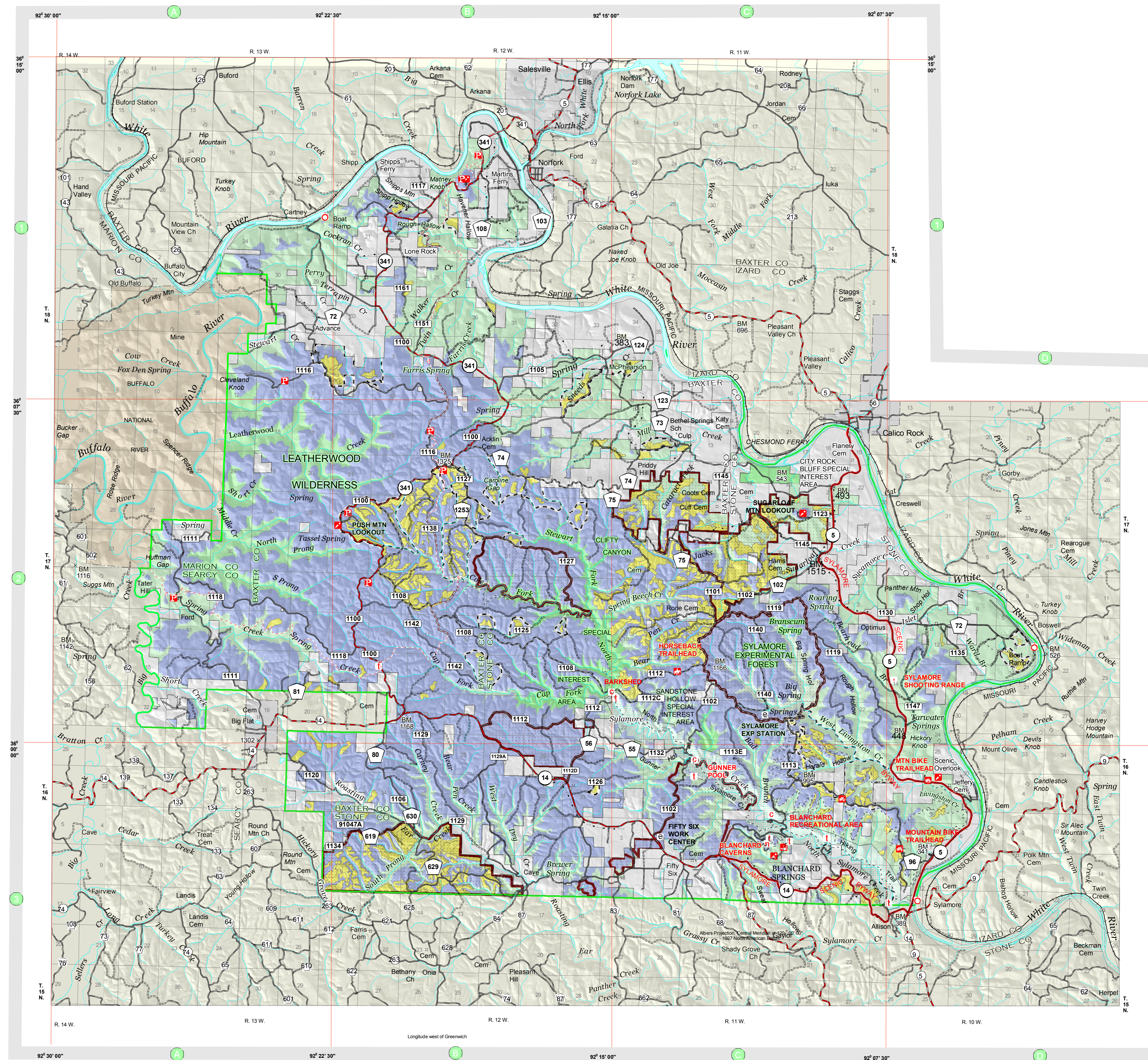
Sale Area Boundary

Timber Sale Units
 (active, marked not sold, and layout not marked)

Big Piney - 21,239 ac
 Boston Mountain - 3,513 ac
 Pleasant Hill - 5,740 ac
 Sylamore - 11,485 ac

Sylamore RD - Greater than 800 ft Elevation
 68,850 acres on general forest lands
 12,494 acres within wilderness

81,344 total acres



- National Forest Boundary
- State Boundary
- County Boundary
- Special Area Boundary
- Multi-Lane Divided Highway
- Highway
- Scenic Byway
- Paved Road
- Gravel Road
- Dirt Road
- Unmaintained Road
- Four-Wheel-Drive Road
- Motorized Use Trail
- Trail
- Ozark Highlands National Recreation Trail
- Power Transmission Line
- Railroad
- Buffalo National Scenic River
- Ozark National Forest
- National Forest Wilderness
- State Park or Wildlife Management Area
- Buffalo National River (National Park Service)

