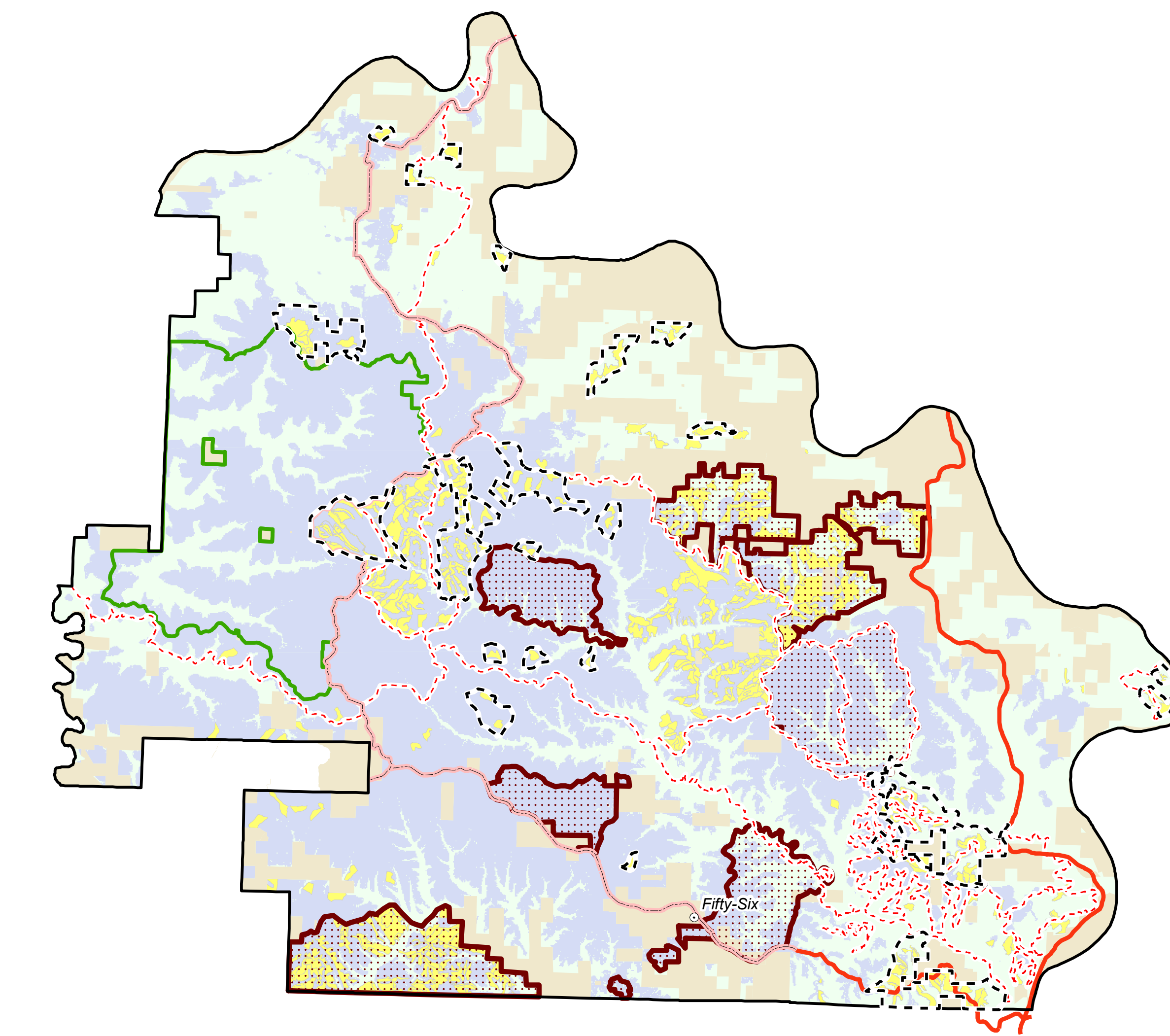
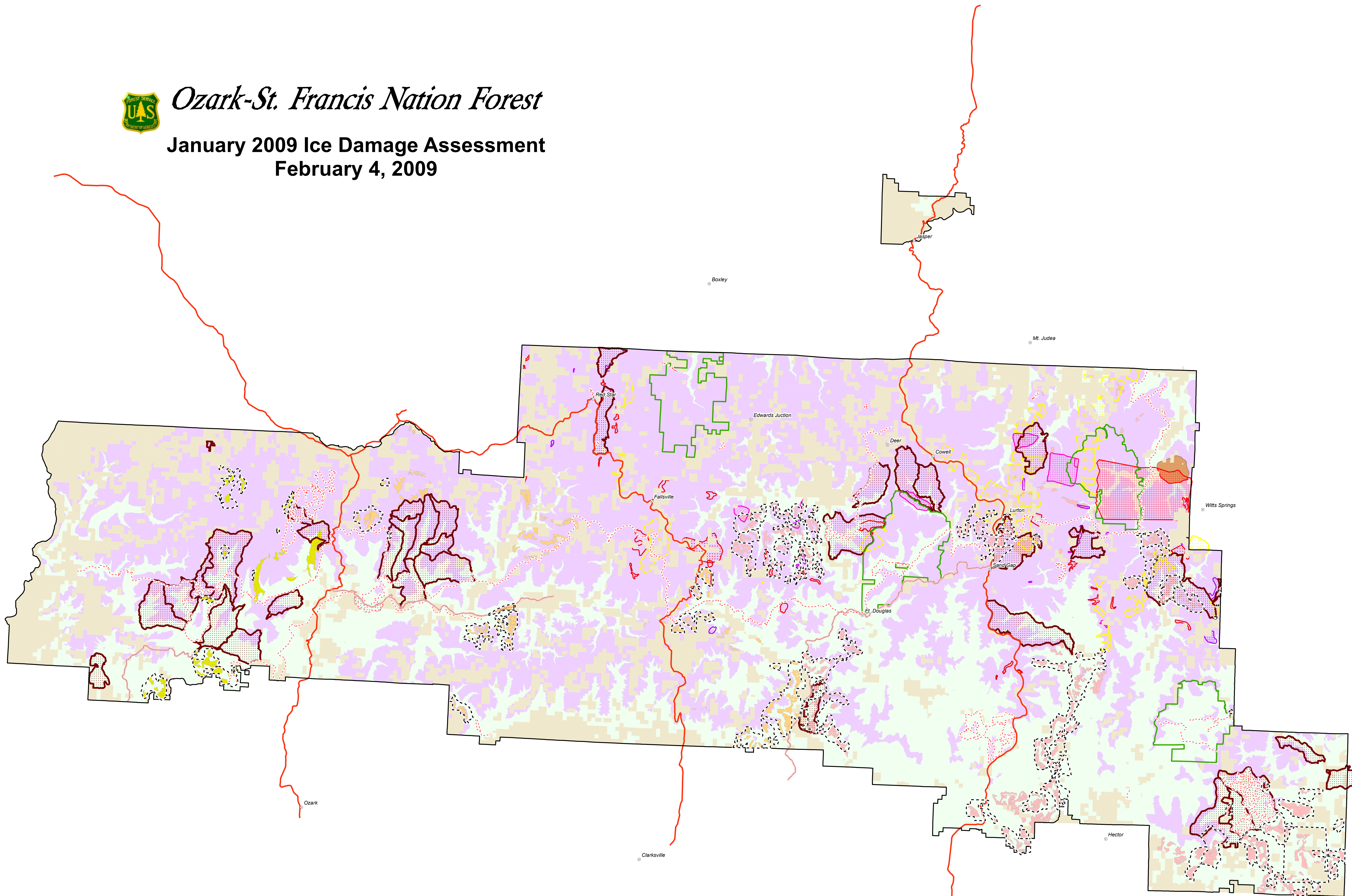




Ozark-St. Francis Nation Forest

January 2009 Ice Damage Assessment February 4, 2009



- Trails
- Proposed Scenic Byway
- Scenic Byway
- Private Land
- Forest Service Land
- Ozark Highlands Trail Corridor
- Wilderness
- FY 2009 Planned RxBurns
 - Big Piney - 43,254 ac
 - Pleasant Hill - 15,485 ac
 - Boston Mountain - 15,485 ac
 - Sylamore - 19,369 ac
- Sale Area Boundary

- Timber Sale Units**
(active, marked not sold, and layout not marked)
- Big Piney - 21,239 ac
 - Boston Mountain - 3,513 ac
 - Pleasant Hill - 5,740 ac
 - Sylamore - 11,485 ac

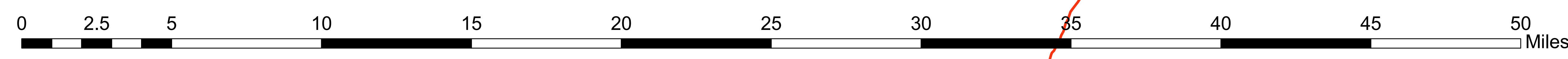
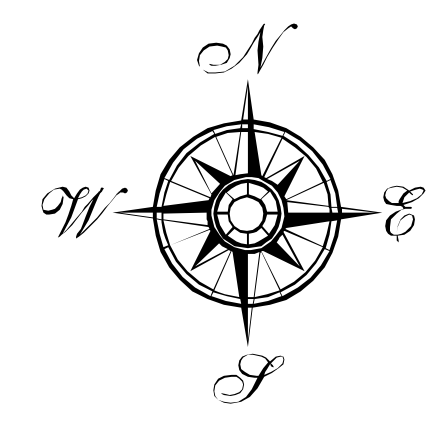
- Forest Health Flight Damage Sketches**
- All Categories of Severe Damage - 11,528 ac
 - > 50% Crown Loss, Hardwood - 2,374 ac
 - > 50% Crown Loss, Hardwood, Mature Pine - 978 ac
 - > 50% Crown Loss, Mature Pine - 87 ac
 - Blowdown & Leaners, Hardwood - 422 ac
 - Blowdown & Leaners, Mature Pine - 24 ac
 - Bole Damage, >50% Crown Loss, Hardwood - 2,229 ac
 - Bole Damage, >50% Crown Loss, Hardwood, Mature Pine - 1,137 ac
 - Bole Damage, >50% Crown Loss, Mature Pine - 29 ac
 - Bole Damage, Blowdown & Leaners, >50% Crown Loss - 25 ac
 - Bole Damage, Blowdown & Leaners, >50% Crown Loss, Hardwood - 18,828 ac
 - Bole Damage, Blowdown & Leaners, >50% Crown Loss, Hardwood, Mature Pine - 2,542 ac
 - Bole Damage, Blowdown & Leaners, Hardwood - 146 ac
 - Bole Damage, Hardwood - 230 ac
 - Bole Damage, Mature Pine - 382 ac
 - Hardwood - 1,574

Main Division - Greater than 1400 ft Elevation
441,551 acres on general forest lands
32,382 acres within wilderness

Sylamore RD - Greater than 800 ft Elevation
68,850 acres on general forest lands
12,494 acres within wilderness

473,933 total acres

81,344 total acres



12004
February 4, 2009
February 1, 2009 14:14