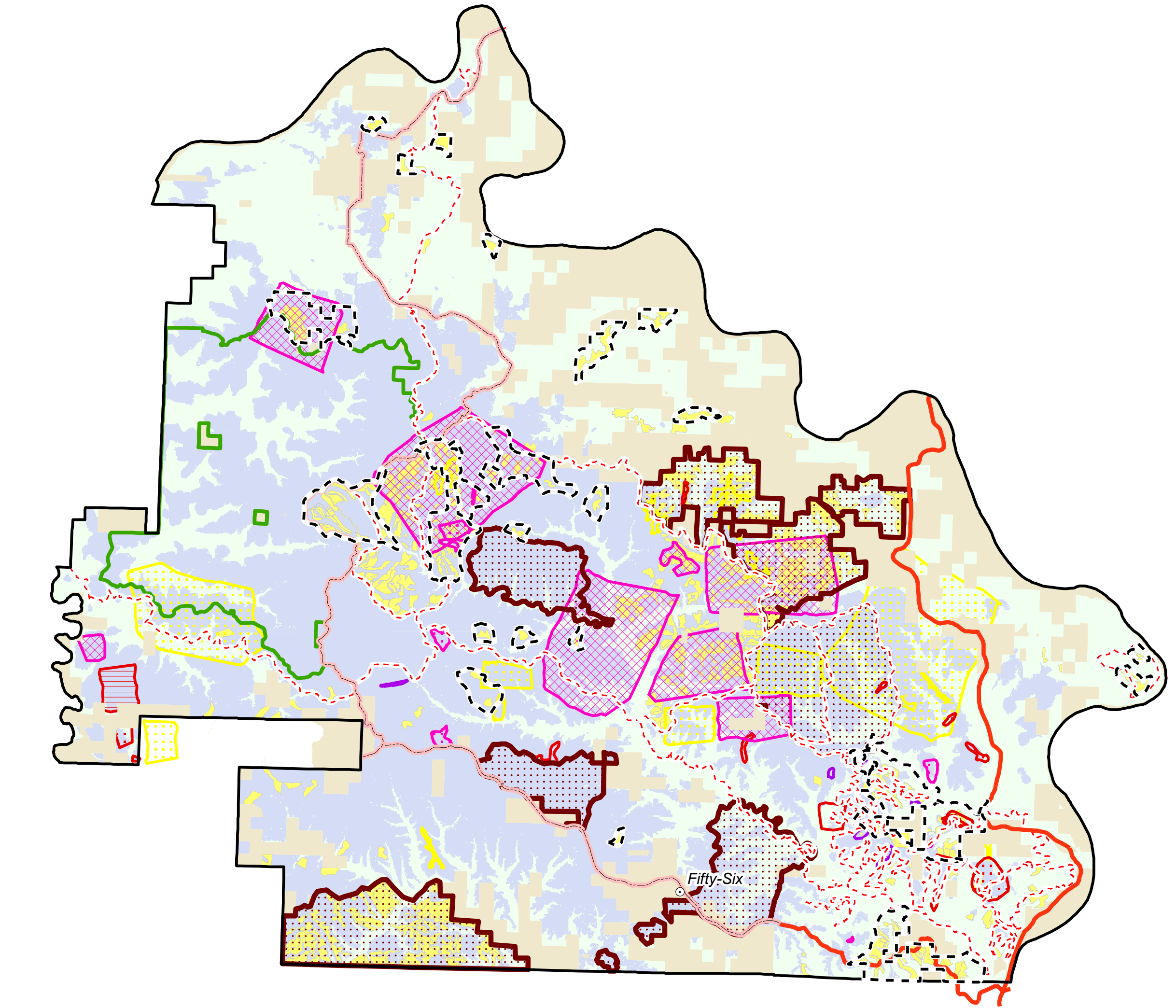
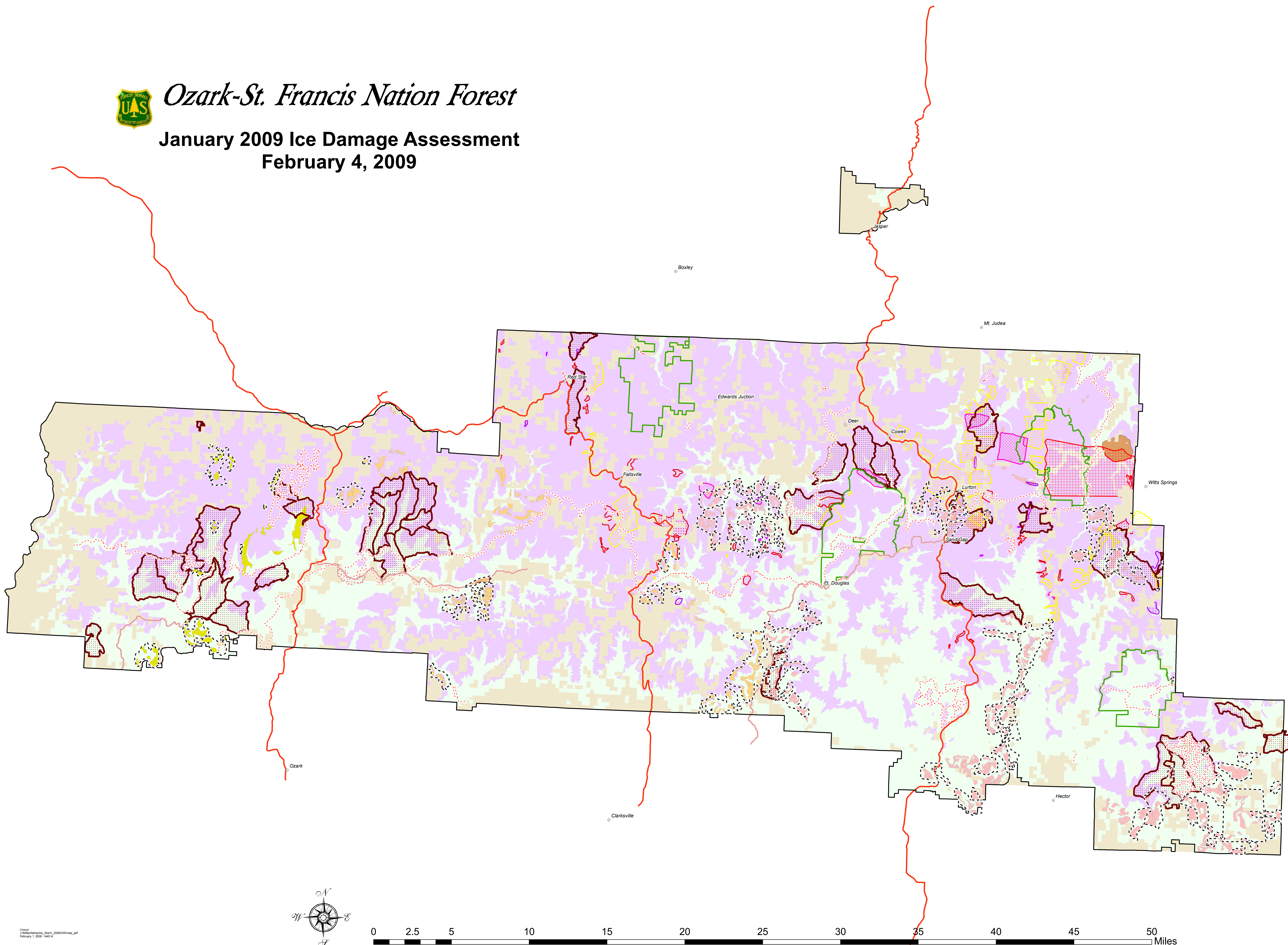




# Ozark-St. Francis Nation Forest

## January 2009 Ice Damage Assessment February 4, 2009



- Trails
- Proposed Scenic Byway
- Scenic Byway
- Private Land
- Forest Service Land
- Ozark Highlands Trail Corridor
- Wilderness
- FY 2009 Planned RxBurns
  - Big Piney - 43,254 ac
  - Pleasant Hill - 15,485 ac
  - Boston Mountain - 15,485 ac
  - Sylamore - 19,369 ac
- Sale Area Boundary

- Timber Sale Units  
(active, marked not sold, and layout not marked)**
- Big Piney - 21,239 ac
  - Boston Mountain - 3,513 ac
  - Pleasant Hill - 5,740 ac
  - Sylamore - 11,485 ac

### 20090204\_FH\_flight\_damage\_sketching

- All Categories of Severe Damage - 11,528 ac
- > 50% Crown Loss, Hardwood - 2,639 ac
- > 50% Crown Loss, Mature Pine - 87 ac
- > 50% Crown Loss, Hardwood, Mature Pine - 978 ac
- Blowdown & Leaners, Hardwood - 497 ac
- Blowdown & Leaners, Mature Pine - 30 ac
- Blowdown & Leaners, > 50% Crown Loss, Hardwood - 37 ac
- Bole Damage, > 50% Crown Loss, Hardwood - 2,853 ac
- Bole Damage, > 50% Crown Loss, Mature Pine - 28 ac
- Bole Damage, > 50% Crown Loss, Hardwood, Mature Pine - 1,137 ac
- Bole Damage, Blowdown & Leaners, > 50% Crown Loss - 25 ac
- Bole Damage, Blowdown & Leaners, > 50% Crown Loss, Hardwood - 29,293 ac
- Bole Damage, Blowdown & Leaners, > 50% Crown Loss, Mature Pine - 402 ac
- Bole Damage, Blowdown & Leaners, Hardwood - 489 ac
- Bole Damage, Blowdown & Leaners, > 50% Crown Loss, Hardwood, Mature Pine - 15,798 ac
- Bole Damage, Blowdown & Leaners, Hardwood, Mature Pine - 29 ac
- Bole Damage, Hardwood - 240 ac
- Bole Damage, Mature Pine - 382 ac
- Hardwood - 1,574 ac

Main Division - Greater than 1400 ft Elevation  
441,551 acres on general forest lands  
32,382 acres within wilderness

Sylamore RD - Greater than 800 ft Elevation  
68,850 acres on general forest lands  
12,494 acres within wilderness

473,933 total acres

81,344 total acres

