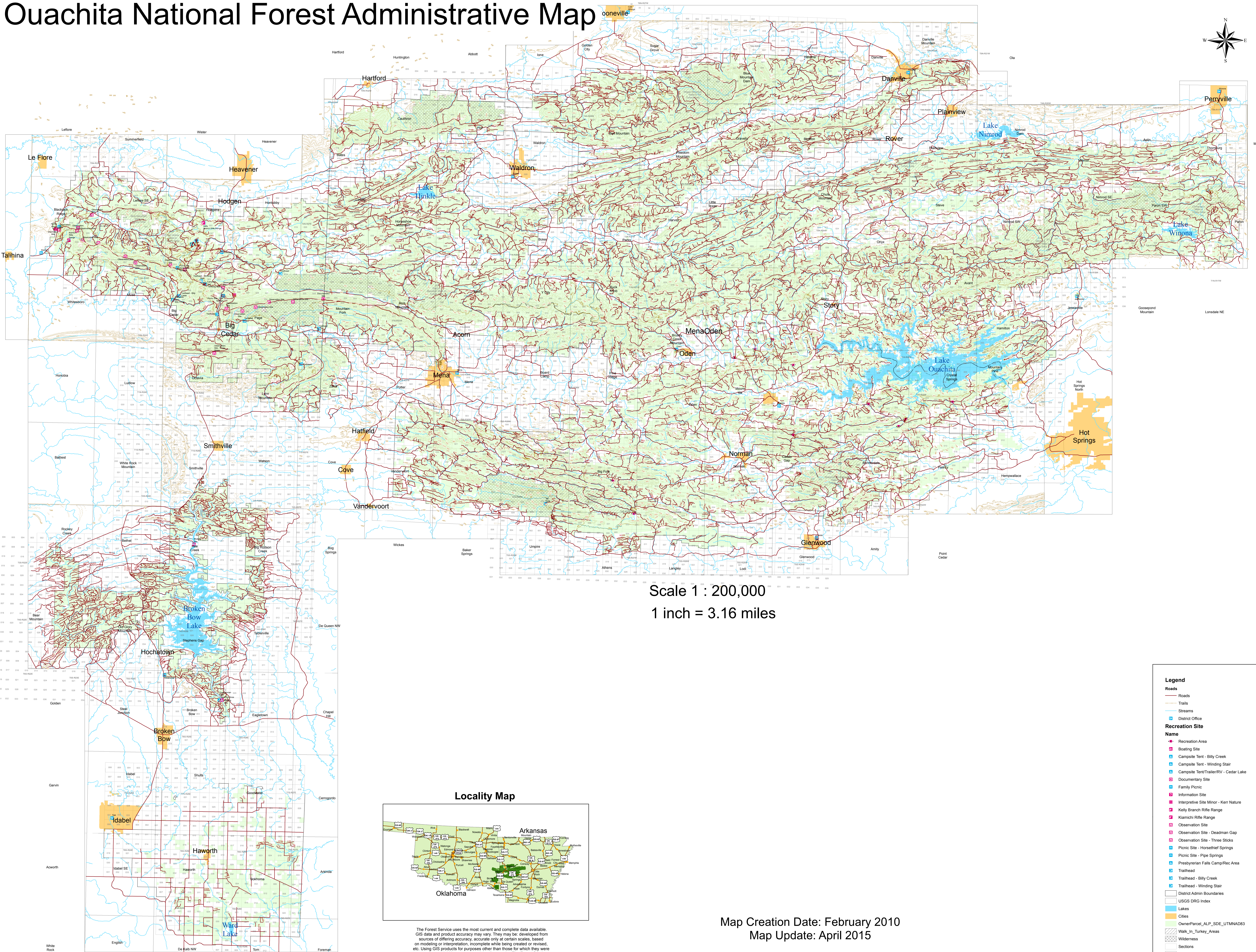
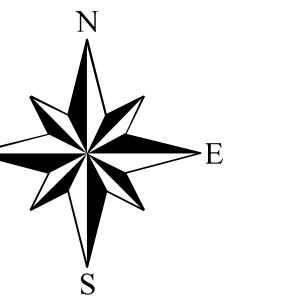
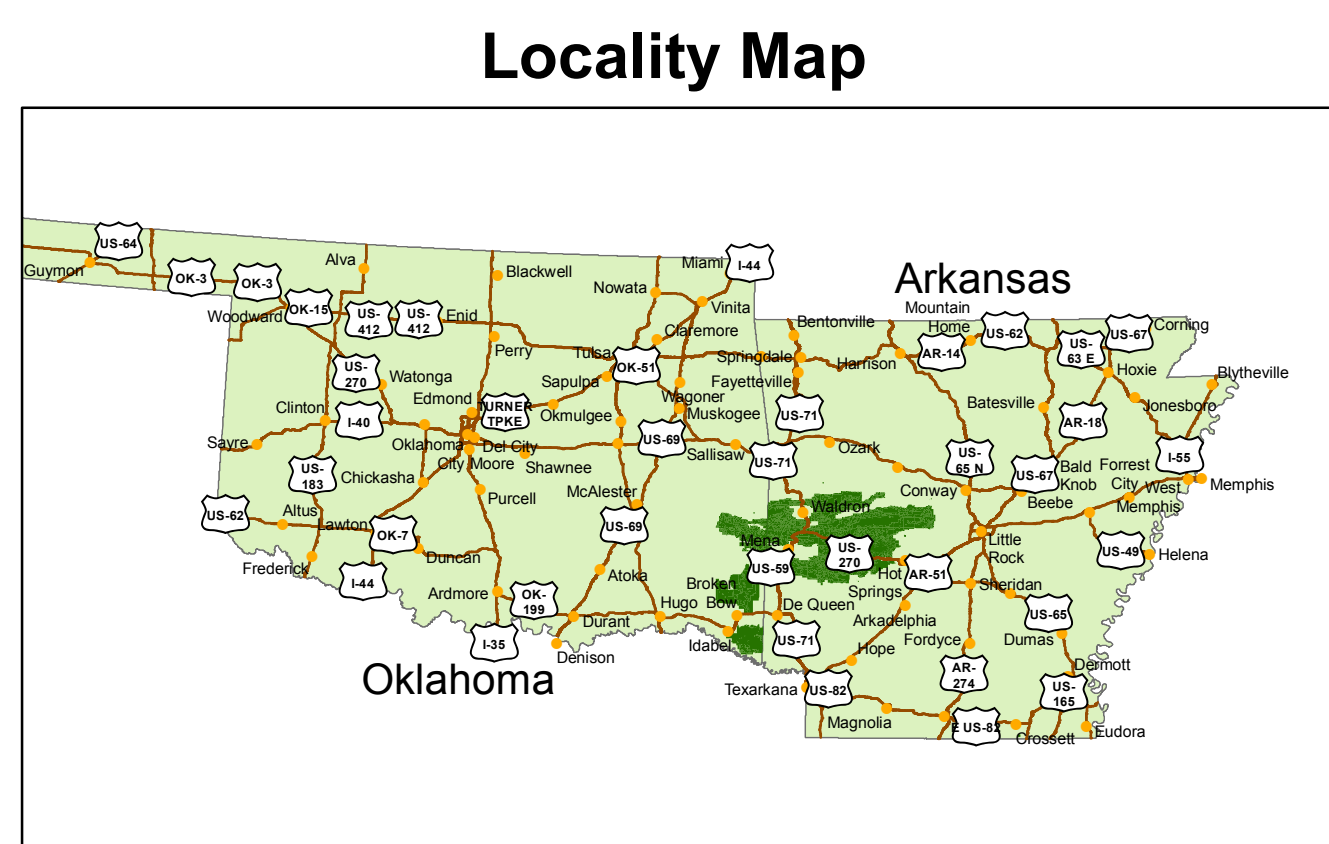


Ouachita National Forest Administrative Map



Scale 1 : 200,000
1 inch = 3.16 miles



The Forest Service uses the most current and complete data available. GIS data and product accuracy may vary. They may be developed from sources of differing accuracy, accurate only at certain scales, based on modeling or interpretation, incomplete when being created or revised, etc. Using GIS products for purposes other than those for which they were created, may yield inaccurate or misleading results. The Forest Service reserves the right to correct, update, modify or replace GIS products without notification.

For more information, contact the Ouachita National Forest 501-321-5202.

Map Creation Date: February 2010
Map Update: April 2015

Legend	
Roads	
	Roads
	Trails
	Streams
	District Office
Recreation Site	
Name	
	Recreation Area
	Boating Site
	Campsite Tent - Billy Creek
	Campsite Tent - Winding Stair
	Campsite Tent/Trailer/RV - Cedar Lake
	Documentary Site
	Family Picnic
	Information Site
	Interpretive Site Minor - Kerr Nature
	Kelly Branch Rifle Range
	Kiamichi Rifle Range
	Observation Site
	Observation Site - Deadman Gap
	Observation Site - Three Sticks
	Picnic Site - Horseshief Springs
	Picnic Site - Pipe Springs
	Presbyterian Falls Camp/Rec Area
	Trailhead
	Trailhead - Billy Creek
	Trailhead - Winding Stair
	Trailhead - Winding Stair
	District Admin Boundaries
	USGS DRG Index
	Lakes
	Cities
	OwnerParcel_ALP_SDE_UTMNA83
	Walk_In_Turkey_Areas
	Wilderness
	Sections
	Township Range