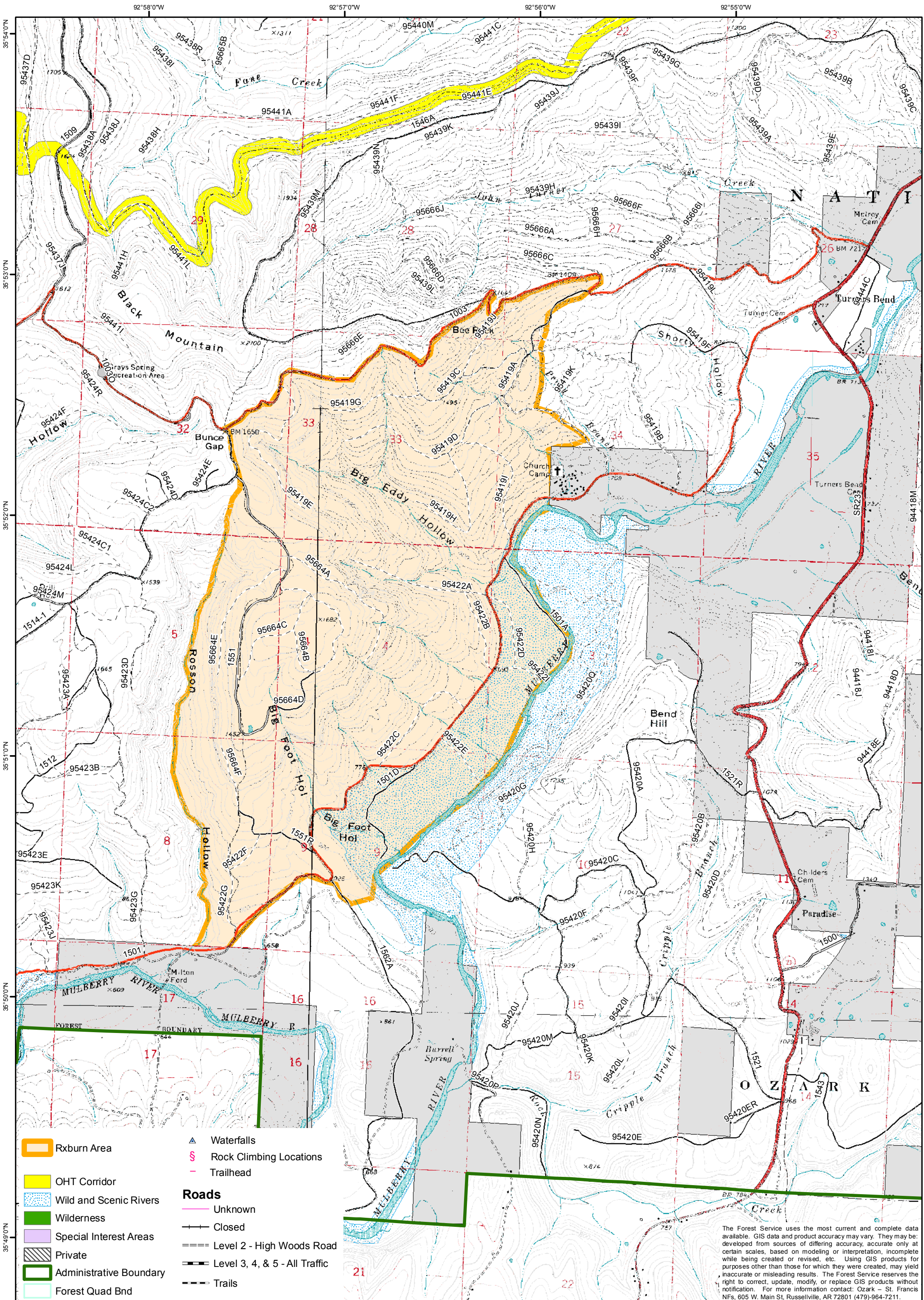


Big Eddy 2,481 Acres Prescribe Burn Map



0 0.1 0.2 0.4 0.6 0.8 1 Miles

Ozark-St. Francis National Forests
Boston Mountain
Ranger District



- Rxburn Area
- OHT Corridor
- Wild and Scenic Rivers
- Wilderness
- Special Interest Areas
- Private
- Administrative Boundary
- Forest Quad Bnd
- Waterfalls
- Rock Climbing Locations
- Trailhead
- Roads**
- Unknown
- Closed
- Level 2 - High Woods Road
- Level 3, 4, & 5 - All Traffic
- Trails

The Forest Service uses the most current and complete data available. GIS data and product accuracy may vary. They may be developed from sources of differing accuracy, accurate only at certain scales, based on modeling or interpretation, incomplete while being created or revised, etc. Using GIS products for purposes other than those for which they were created, may yield inaccurate or misleading results. The Forest Service reserves the right to correct, update, modify, or replace GIS products without notification. For more information contact: Ozark - St. Francis NFs, 605 W. Main St, Russellville, AR 72801 (479)-964-7211.