

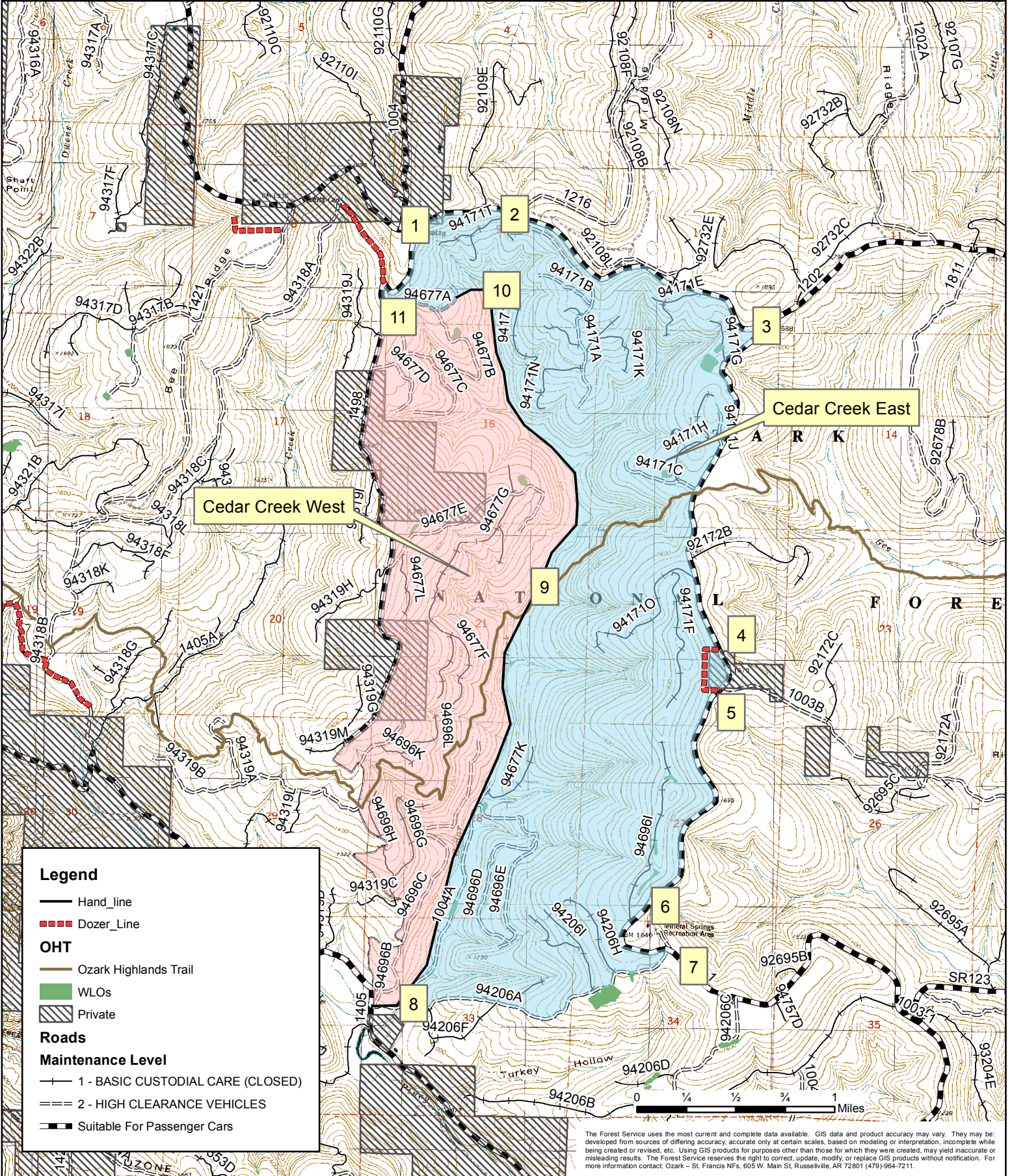
# Cedar Creek East 2547 ac.

## Prescribe Burn Map



Ozark-St. Francis National Forests

Pleasant Hill Ranger District



### Legend

— Hand\_line

--- Dozer\_Line

### OHT

— Ozark Highlands Trail

■ WLOs

▨ Private

### Roads

#### Maintenance Level

— 1 - BASIC CUSTODIAL CARE (CLOSED)

=== 2 - HIGH CLEARANCE VEHICLES

--- Suitable For Passenger Cars

The Forest Service uses the most current and complete data available. GIS data and product accuracy may vary. They may be developed from sources of differing accuracy, accurate only at certain scales, based on modeling or interpretation, incomplete while being created or revised, etc. Using GIS products for purposes other than those for which they were created, may yield inaccurate or misleading results. The Forest Service reserves the right to correct, update, modify, or replace GIS products without notification. For more information contact: Ozark - St. Francis NFs, 605 W. Main St, Russellville, AR 72801 (479)-964-7211.