

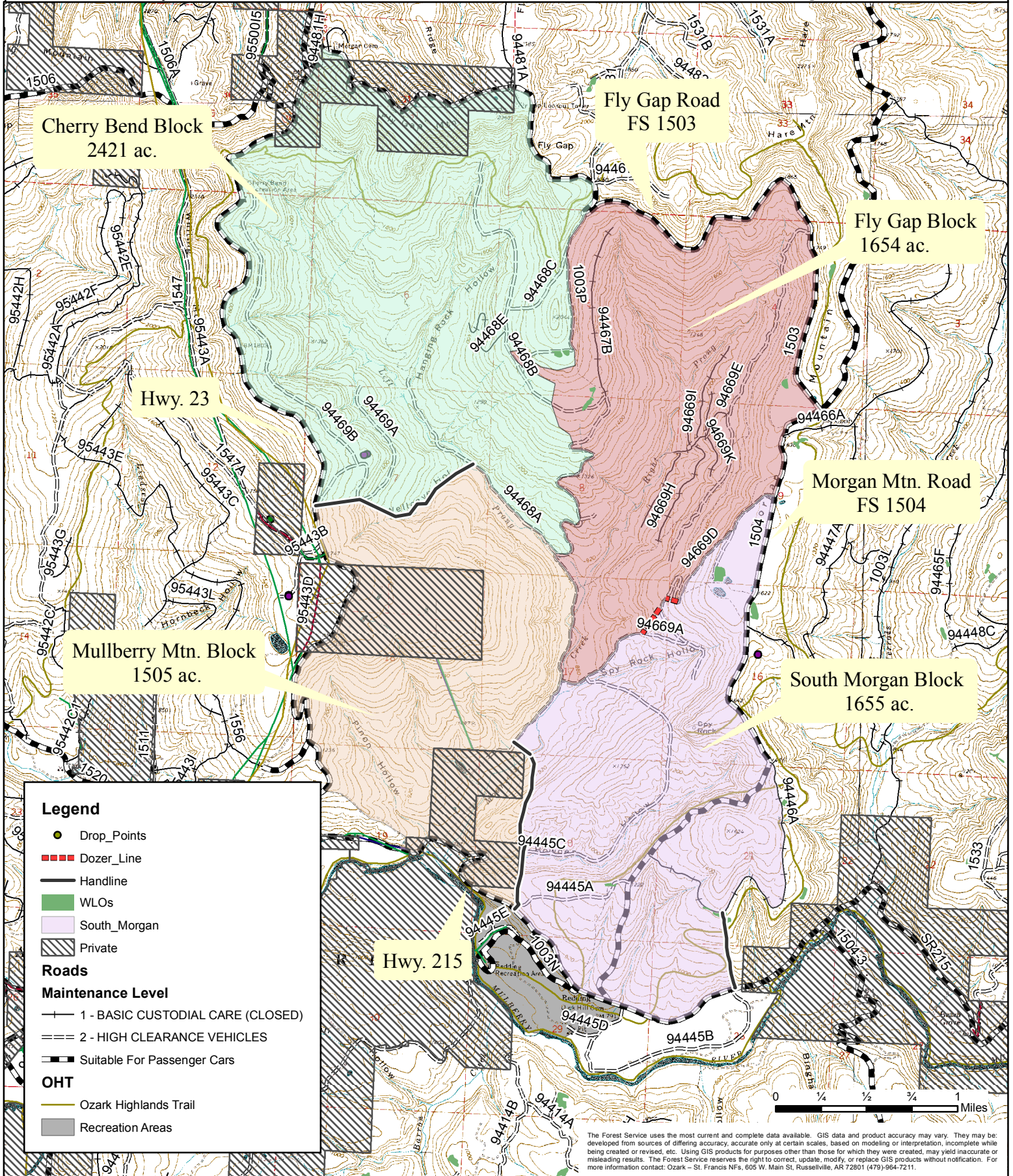
# West Morgan - 7235 acres

## Prescribe Burn Map



Ozark-St. Francis National Forests

Pleasant Hill Ranger District



Cherry Bend Block  
2421 ac.

Fly Gap Road  
FS 1503

Fly Gap Block  
1654 ac.

Hwy. 23

Morgan Mtn. Road  
FS 1504

Mullberry Mtn. Block  
1505 ac.

South Morgan Block  
1655 ac.

### Legend

● Drop\_Points

■ Dozer\_Line

— Handline

■ WLOs

■ South\_Morgan

■ Private

### Roads

#### Maintenance Level

— 1 - BASIC CUSTODIAL CARE (CLOSED)

=== 2 - HIGH CLEARANCE VEHICLES

— Suitable For Passenger Cars

### OHT

— Ozark Highlands Trail

■ Recreation Areas

Hwy. 215

0 1/4 1/2 3/4 1 Miles

The Forest Service uses the most current and complete data available. GIS data and product accuracy may vary. They may be developed from sources of differing accuracy, accurate only at certain scales, based on modeling or interpretation, incomplete while being created or revised, etc. Using GIS products for purposes other than those for which they were created, may yield inaccurate or misleading results. The Forest Service reserves the right to correct, update, modify, or replace GIS products without notification. For more information contact: Ozark - St. Francis NFs, 605 W. Main St, Russellville, AR 72801 (479)-964-7211.