

IMPASSABLE BAY COMPLEX



TUESDAY, JUNE 28, 2011

DAY: 0700-2100

AND

SWING: 1200 - 6/29@0200

P8F5HU

(0805)

GPS: NAD 83 - FORMAT : DD MM. MM

INCIDENT OBJECTIVES	1. Incident Name	2. Date Prepared	3. Time Prepared
	Impassable Bay Complex	6/27/2011	2000
4. Operational Period 6/28/2011 0700-1900 & Swing Shift: 1200 to 6/29 @0200			
5. General Control Objectives For The Incident (Include Alternatives)			
<ol style="list-style-type: none"> 1. Provide for the safety of all incident personnel and the public, by adhering to all established guidelines and protocols. 2. Keep fire within the Impassable Bay swamp by using Forest Service Roads 270, 200, 222, 235, 232, 212 and 272, and contain the Kelly Road Fire south of 281 road, east of 287, north of Suwannee road and minimize growth on private land. 3. Manage the fire in a manner that is safe and cost effective for the values at risk. 4. Maintain a positive working relationship with our State and Federal partners and adjacent landowners by initiating and maintaining timely communications. Work closely with designated landowner (GOAL) representatives and adjacent county/state agencies to ensure that fire suppression and incident on respective lands are fully coordinated. 5. Together with the Florida Division of Forestry (DOF), coordinate fire management activities to maximize efficient use of wildland and structural resources on private and public lands including urban interface structures, timber, and sensitive habitats. Develop structure protection plans where necessary and minimize the impact to the private timber industry. 6. Provide initial attack resources as directed in the Delegation of Authority. 7. Prepare and implement a Rehabilitation Plan for current and future fires. 8. Minimize adverse effects to Cultural Resources through minimally ground disturbing suppression tactics, recording and flagging sites and avoid if possible. Report unauthorized digging or collection of sites. Record location of dozer lines and/or mechanically improved roads for rehabilitation needs. 			
6. Weather Forecast For Period			
See attached weather			
7. General Safety Message			
Drive defensively and with headlights on. Drink plenty of water and take frequent rest breaks. Ensure LCES is in place and known by all personnel.			
8. ATTACHEMENTS (X IF ATTACHED)			
<input checked="" type="checkbox"/> Organization List - ICS 203 <input checked="" type="checkbox"/> Medical Plan - ICS 206 <input checked="" type="checkbox"/> Air Ops Summary _____ <input checked="" type="checkbox"/> Division Assignment Lists - ICS 204 <input checked="" type="checkbox"/> Incident Map <input checked="" type="checkbox"/> Fire weather forecast _____ <input checked="" type="checkbox"/> Communications Plan - ICS 205 <input checked="" type="checkbox"/> Traffic Plan <input checked="" type="checkbox"/> Fire Behavior forecast _____			
9. Prepared By (Planning Section Chief)		10. Approved By (Incident Commander)	
EVAN BOSHELL		JOHN KIDD	

ORGANIZATION ASSIGNMENT LIST		9. Operations Section	
1. Incident Name IMPASSABLE BAY COMPLEX		Field Operations	Colt Mortenson Brook Chadwick (T)
2. Date Prepared June 28, 2011		Planning Operations	Tracy Swenson
3. Time 2000		a. Branch I	
4. Operational Period DAY SHIFT JUNE 28, 2011 0700-2100 SWING SHIFT 1200 – JUNE 29@0200		Branch Director	
Position	Name	Division/Group	IA Jason Kirks Bryan Brazzeal (T)
5. Incident Commander		Division/Group	CONTINGENCY Brian Keating
Incident Commanders	John Kidd	Division/Group	IMPASSABLE Daren Turner
Deputy Incident Commander	Tom Suwyn	Division/Group	Y-Kelly Clint Coates Tyko Isaacson(T)
Incident Commander (T)	Tracy Dunford	Division/Group	Z-Kelly Steve Mullis
Safety Officers	Steve Davis/Ken Moore	Division/Group	SWING Heath Hand
Information Officer	Dick Birger Kirsten Cannon	Division/Group	
6. Agency Representative		b. Branch II	
Agency	Name	Branch Director	
FS – Forest Supervisor	Fred Way	Division/Group	
FS – Agency Admin. Rep.	Marcus Beard	c. Branch III	
FS – Agency Admin. Rep.	Don Neal	Branch Director	
Resource Advisor - FS	Carl Petrick	Division/Group	
Florida DOF	Barry Coulliette	d. Air Operations Branch	
7. Planning Section		Air Operations Branch Director	Jill McCurdy
Chief	Evan Boshell	AOBD(T)	Kevin Greenhalgh
Resources Unit	Clark Tucker	ABRO	Darold Williams
Resources Unit	Renee Flanagan	Air Tactical Group Supervisor	Mike Melton
Documentation Unit	Clark Tucker	Air Tactical Group Supervisor	Tim Caughlin
Demob Unit	Linda Chappell/Heidi Little	Air Tactical Group Supervisor	Mark Beckwith
Situation Unit	Lou Ballard	Air Support Group Supervisor	Chris Gamble
FBAN		Helibase Manager T-1	Don Nicholas
IMET		HEB2(T)	Fred Alldridge
GIS Specialist	Sarah Peterson	ATB Mgr.	Darrell Bohanon
Training Specialist			
Computer Specialist	Heidi Little		
Status/Check-in		10. Finance Section	
8. Logistics Section		Chief	Mike Taylor
Chief	Brent Crosland	Time Unit	Stacey Heaps
LSC2(T)	Varian Allen	Cost Unit	Wendy Soper
Supply Unit	Nan Coates	Compensation/Claims Unit	
Facilities Unit	Duane Stewart	Procurement Unit Leader	
Ground Support Unit	Art Partridge		
Communications Unit	Walter Warrick	Prepared by Resource Unit Leader	
Medical Unit	Deb Lopez	CLARK TUCKER	
Ordering Mgr	Randy Davis		
Food Unit	Shannon Swann		

DIVISION ASSIGNMENT LIST		1. Branch		2. Division/Group IA			
3. Incident Name IMPASSABLE BAY COMPLEX		4. Operational Period Date: June 28, 2011 Time: 0700 - 2000					
5. Operations Personnel							
OPERATIONS CHIEF	Colt Mortenson Tracy Swenson Brook Chadwick(T)		ICT4	Jason Kirks Bryan Brazzeal(T)			
Safety officer			Air Attack Supervisor	Mike Melton			
6. Resources Assigned this Period							
Strike Team/Task Force/ Resource Designator	Leader	Number Persons	Trans. Needed	Last Day To Work	Location.Time	Location./Time	
ENG 461	Munson	3	N		ICP/0700	OFFICE/2200	
ENG E-4	Amanda Barnes	3	N	7/5	ICP/0700	OFFICE/2200	
ENG MARYLAND #5	Carroll Wagner	2	N	6/29	ICP/0700	OFFICE/2200	
ENG 408		3	N		ICP/0700	OFFICE/2200	
ENG 161	Amos Stone	2	N	7/9	ICP/0700	STATION/2100	
TPL ATTACK 1	C. Slayton	2	N		ICP/0700	OFFICE/2200	
DOZER 3		1	N		ICP/0700	OFFICE/2200	
DOZER 57	Coon	1	N	7/6	ICP/0700	OFFICE/2200	
DOZER 59	Grimm	1	N	7/6	ICP/0700	OFFICE/2200	
DOZER 2		1	N		ICP/0700	OFFICE/2200	
7. Control Operations PATROL ALL FIRES OTHER THAN IMPASSABLE BAY COMPLEX. BE READY FOR IA ASSIGNMENTS.							
8. Special Instructions INSURE LCES IS IN PLACE. DRIVE DEFENSIVELY WITH LIGHTS ON AT ALL TIMES.							
9. Division/Group Communication Summary							
Function	Frequency	System	Channel	Function	Frequency	System	Channel
Olustee Repeater	Rx 171.5500 Tx 172.3750 Tone 167.9	King NIFC	11	Eddy Repeater	Rx 171.5500 Tx 172.3750 Tone 146.2	King NIFC	12
Tactical Div/Group		King NIFC		Air to Ground 2	Rx 168.1250 Tx 168.1250	King NIFC	14
Prepared by (Resource Unit Ldr.) /S/ Clark Tucker		Approved by (Planning Sect. Ch.) /S/ EVAN BOSHELL		Date JUNE 27, 2011		Time 2200	

DIVISION ASSIGNMENT LIST		1. Branch		2. Division/Group CONTINGENCY			
3. Incident Name IMPASSABLE BAY COMPLEX		4. Operational Period Date: June 28, 2011 Time: 0700 - 2000					
5. Operations Personnel							
OPERATIONS CHIEF	Colt Mortenson Tracy Swenson Brook Chadwick(T)		DIVS	Brian Keating			
Safety officer			Air Attack Supervisor	Mike Melton			
6. Resources Assigned this Period							
Strike Team/Task Force/ Resource Designator	Leader	Number Persons	Trans. Needed	Last Day To Work	Location/Time	Location./Time	
F350 & TRAILER - ROT		1	N		FIRE/0700	STATION/2200	
EXCAVATOR - ROT		1	N		FIRE/0700	STATION/2200	
EXCAVATOR W/ FECON - ROT		1	N		FIRE/0700	STATION/2200	
GRADER - ROT		1	N		FIRE/0700	STATION/2200	
DUMP TRUCK - ROT		1	N		FIRE/0700	STATION/2200	
LOWBOY & TRANS. - ROT		1	N		FIRE/0700	STATION/2200	
EXCAVATOR		1	N		FIRE/0700	STATION/2200	
MOWER		1	N		FIRE/0700	STATION/2200	
7. Control Operations CONTINUE PREP WORK ON ROAD SYSTEM. COORDINATE WITH COOPERATORS.							
8. Special Instructions INSURE LCES IS IN PLACE.							
9. Division/Group Communication Summary							
Function	Frequency	System	Channel	Function	Frequency	System	Channel
Olustee Repeater	Rx 171.5500 Tx 172.3750 Tone 167.9	King NIFC	11	Eddy Repeater	Rx 171.5500 Tx 172.3750 Tone 146.2	King NIFC	12
Tactical Div/Group		King NIFC		Air to Ground 2	Rx 168.1250 Tx 168.1250	King NIFC	14
Prepared by (Resource Unit Ldr.) /S/ Clark Tucker		Approved by (Planning Sect. Ch.) /S/ EVAN BOSHELL		Date JUNE 27, 2011		Time 2200	

DIVISION ASSIGNMENT LIST		1. Branch		2. Division/Group IMPASSABLE			
3. Incident Name IMPASSABLE BAY COMPLEX		4. Operational Period Date: June 28, 2011 Time: 0700 - 2000					
5. Operations Personnel							
OPERATIONS CHIEF	Colt Mortenson Tracy Swenson Brook Chadwick(T)		DIVS	Daren Turner			
Safety officer	Daniel Johnson		Air Attack Supervisor	Mike Melton			
6. Resources Assigned this Period							
Strike Team/Task Force/ Resource Designator	Leader	Number Persons	Trans. Needed	Last Day To Work	Location/Time	Location./Time	
EMT	Meredith Lund	1	N	7/5	ICP/0700	STATION/2100	
ENG MAINE 6156	Arthur Lavoie	3	N	7/7	ICP/0700	STATION/2100	
BURNS HELITACK		3	N		ICP/0700	STATION/2100	
ENG MAINE 6170	Dustin Pickering	3	N	7/7	ICP/0700	STATION/2100	
7. Control Operations PATROL AND MOPUP AS NEEDED.							
8. Special Instructions INSURE LCES IS IN PLACE. DRIVE DEFENSIVELY WITH LIGHTS ON AT ALL TIMES. WATCH FOR ROAD REPAIR AND HEAVY EQUIPMENT ON ACCESS ROADS.							
9. Division/Group Communication Summary							
Function	Frequency	System	Channel	Function	Frequency	System	Channel
Olustee Repeater	Rx 171.5500 Tx 172.3750 Tone 167.9	King NIFC	11	Eddy Repeater	Rx 171.5500 Tx 172.3750 Tone 146.2	King NIFC	12
Tactical Div/Group	Rx 168.0500 Tx 168.0500 Tone 136.5	King NIFC	1	Air to Ground 2	Rx 168.1250 Tx 168.1250	King NIFC	14
Prepared by (Resource Unit Ldr.) /S/ Clark Tucker		Approved by (Planning Sect. Ch.) /S/ EVAN BOSHELL		Date JUNE 27, 2011		Time 2200	

DIVISION ASSIGNMENT LIST			1. Branch		2. Division/Group Y - Kelly			
3. Incident Name IMPASSABLE BAY COMPLEX			4. Operational Period Date: June 28, 2011 Time: 0700 - 2000					
5. Operations Personnel								
OPERATIONS CHIEF		Colt Mortenson Tracy Swenson Brook Chadwick(T)		DIVS		Clint Coates Tyko Isaacson(T)		
Safety officer EMT		Ronnie Taylor Daniel Conkle		Air Attack Supervisor		Mike Melton		
6. Resources Assigned this Period								
Strike Team/Task Force/ Resource Designator		Leader	Number Persons	Trans. Needed	Last Day To Work	Location/Time	Location./Time	
KRASSEL HELITACK		Moan	5	N		ICP/0700	STATION/2100	
CRW T2IA GRAND RONDE		Colby Drake	20	N	7/3	ICP/0700	STATION/2100	
ENG E-17 (BRUSH 12)		Mark Cornett	3	N	7/1	ICP/0700	STATION/2100	
ENG E-18 (BRUSH 74)		Howard Oden	3	N	6/30	ICP/0700	STATION/2100	
ENG 2622		Johnson	4	N	6/30	ICP/0700	STATION/2100	
TFLD		Terry George	1	N	7/10	ICP/0700	STATION/2100	
TFLD(T)		Joel McCraw	1	N	7/10	ICP/0700	STATION/2100	
TFLD(T)		Matthew Ringer	1	N	6/30	ICP/0700	STATION/2100	
ENG 31		Luke Smith	4	N	7/10	ICP/0700	STATION/2100	
ENG 4761		Robert Mulvaney	3	N	7/10	ICP/0700	STATION/2100	
ENG 1161		Dennis Gillmer	3	N	7/10	ICP/0700	STATION/2100	
ENG 4302		Issac Hull	3	N	7/10	ICP/0700	STATION/2100	
ENG 43F53		Mark Smith	4	N	7/10	ICP/0700	STATION/2100	
W/T -20			1	N	7/4	ICP/0700	STATION/2100	
7. Control Operations IMPROVE LINES AND MOPUP.								
8. Special Instructions INSURE LCES IS IN PLACE. DRIVE DEFENSIVELY WITH LIGHTS ON AT ALL TIMES.								
9. Division/Group Communication Summary								
Function	Frequency	System	Channel	Function	Frequency	System	Channel	
Olustee Repeater	Rx 171.5500 Tx 172.3750 Tone 167.9	King NIFC	11	Eddy Repeater	Rx 171.5500 Tx 172.3750 Tone 146.2	King NIFC	12	
Tactical Div/Group	Rx 166.7250 Tx 166.7250 Tone 136.5	King NIFC	4	Air to Ground 1	Rx 166.6375 Tx 166.6375	King NIFC	13	
Prepared by (Resource Unit Ldr.) /S/ Clark Tucker			Approved by (Planning Sect. Ch.) /S/ EVAN BOSHELL			Date JUNE 27, 2011		Time 2200

DIVISION ASSIGNMENT LIST		1. Branch		2. Division/Group Z - Kelly			
3. Incident Name IMPASSABLE BAY COMPLEX		4. Operational Period Date: June 28, 2011 Time: 0700 - 2000					
5. Operations Personnel							
OPERATIONS CHIEF	Colt Mortenson Tracy Swenson Brook Chadwick(T)		DIVS	Steve Mullis			
Safety officer	Ronnie Taylor		Air Attack Supervisor	Mike Melton			
6. Resources Assigned this Period							
Strike Team/Task Force/ Resource Designator	Leader	Number Persons	Trans. Needed	Last Day To Work	Location/Time	Location./Time	
EMT	Andrew Brady	1	N	7/8	ICP/0700	STATION/2100	
ENG WILDLAND WAREHOUSE	Willie Cirone	3	N	7/4	ICP/0700	STATION/2100	
ENG 35	James Roberts	3	N	7/4	ICP/0700	STATION/2100	
ENG 705	Manuel Wesaw	3	N	7/1	ICP/0700	STATION/2100	
ENG BRUSH 2	T. Talbot	3	N	6/30	ICP/0700	STATION/2100	
ENG 632	Robert Main	3	N	7/9	ICP/0700	STATION/2100	
ENG 641	Joe Carrick	3	N	7/9	ICP/0700	STATION/2100	
ENG 362	Heather Martens	3	N	7/12	ICP/0700	STATION/2100	
W/T - 10		1	N	7/4	ICP/0700	STATION/2100	
KUBOTA UTV	Thorning	2	N				
7. Control Operations IMPROVE LINES AND MOPUP							
8. Special Instructions INSURE LCES IS IN PLACE. DRIVE DEFENSIVELY WITH LIGHTS ON AT ALL TIMES.							
9. Division/Group Communication Summary							
Function	Frequency	System	Channel	Function	Frequency	System	Channel
Olustee Repeater	Rx 171.5500 Tx 172.3750 Tone 167.9	King NIFC	11	Eddy Repeater	Rx 171.5500 Tx 172.3750 Tone 146.2	King NIFC	12
Tactical Div/Group	Rx 166.6375 Tx 166.6375 Tone 136.5	King NIFC	5	Air to Ground 1	Rx 166.6375 Tx 166.6375	King NIFC	13
Prepared by (Resource Unit Ldr.) /S/ Clark Tucker		Approved by (Planning Sect. Ch.) /S/ EVAN BOSHELL		Date JUNE 27, 2011		Time 2200	

DIVISION ASSIGNMENT LIST		1. Branch		2. Division/Group SWING			
3. Incident Name IMPASSABLE BAY COMPLEX		4. Operational Period Date: June 28, 2011 Time: 1200 - 6/29@0200					
5. Operations Personnel							
OPERATIONS CHIEF	Colt Mortenson Tracy Swenson Brook Chadwick(T)			DIVS	Heath Hand		
Safety officer	Lyle Klenski			Air Attack Supervisor	Mike Melton		
6. Resources Assigned this Period							
Strike Team/Task Force/ Resource Designator	Leader	Number Persons	Trans. Needed	Last Day To Work	Location/Time	Location./Time	
EMT	Scott Pannell	1	N	7/4	ICP/1200	STATION/0200	
ENG RED ROCKS 1	Scott Kregness	3	N	7/4	ICP/1200	STATION/0200	
ENG RED ROCKS 7	Roscoe Benoy	3	N	7/4	ICP/1200	STATION/0200	
ENG RED LAKE 29	Patrick Norquay	3	N	7/12	ICP/1200	STATION/0200	
7. Control Operations PATROL AND MONITOR IMPASSABLE BAY COMPLEX FIRES.							
8. Special Instructions ON CALL SWING SHIFT IC IS TRACY DUNFORD, (801) 558-6508. ICP WILL STAFF RADIO. COMMUNICATIONS UNIT CAN BE REACHED AT (386) 344-1678.							
9. Division/Group Communication Summary							
Function	Frequency	System	Channel	Function	Frequency	System	Channel
Olustee Repeater	Rx 171.5500 Tx 172.3750 Tone 167.9	King NIFC	11	Eddy Repeater	Rx 171.5500 Tx 172.3750 Tone 146.2	King NIFC	12
Tactical Div/Group	Rx 168.200 Tx 168.200 Tone 136.5	King NIFC	2	Air to Ground 2	Rx 168.1250 Tx 168.1250	King NIFC	14
Prepared by (Resource Unit Ldr.) /S/ Clark Tucker		Approved by (Planning Sect. Ch.) /S/ EVAN BOSHELL			Date JUNE 27, 2011		Time 2200

ICS 220 - Continued

10. TASK/ MISSION/ ASSIGNMENT (Type/ function includes: Air Tactical, Retardant, Recon, Personnel Transport, Bucket Operations, SAR, etc.)					
TYPE/FUNCTION	PRIORITY	NAME OF PERSONNEL OR CARGO (If applicable) or instructions for tactical aircraft	MISSION START	FLY FROM	FLY TO
Air Tactical		Coverage by ATGS as needed or requested by OPS.	0900	ATB	Fire
Retardant Drops		Requested by DIVS through ATGS and approved by OPS.	1000	ATB	Fire
Water Drops		Requested by DIVS through ATGS and approved by OPS.	0900	Helibase	Fire
Medical Transport		Crew Boss contact DIVS; DIVS contact ATGS for medical evacuations/transport.	As Requested	Helibase	Fire
Recon		As requested and approved by OPS.	As Requested	Helibase	Fire
Initial Attack		As directed by OPS.			

Helibase, Dip Sites, Pick Up Sites, etc.	Helispots, Sling Spots, Repeater Sites, etc.
Helibase 30° 11' 13" x 82° 34' 27"	

VI. Wind Restrictions.

The capability to fly a helicopter in excessive wind conditions varies considerably with the weight class of the helicopter and the degree of turbulence associated with the wind. If the helicopter flight manual or the helicopter operator's policy does not set lower limits, the following shall be used. These limits may be further restricted at the discretion of the Pilot or other air operations personnel. Limitations are as follows:

**FLIGHT ABOVE GROUND LEVEL
FLIGHT PERMITTED IN WINDS LESS THAN / MAXIMUM GUST SPREAD (in knots)**

Flights More Than 500' AGL		
Type 1 Helicopters	Type 2 Helicopters	Type 3 Helicopters
50 kts (58 mph) / Gusts: N/A	50 kts (58 mph) / Gusts: N/A	50 kts (58 mph) / Gusts: N/A
Flights Less Than 500' AGL		
Type 1 Helicopters	Type 2 Helicopters	Type 3 Helicopters
40 kts (46 mph) / 15 (17 mph) kts	40 kts (46mph) / 15 (17 mph) kts	30 kts (35 mph)/15 kts (17 mph)

Approved by: /s/ Jill McCurdy, AOBD

FIRE WEATHER PLANNING FORECAST FOR NORTHEAST FLORIDA/SOUTHEAST GEORGIA
 NATIONAL WEATHER SERVICE JACKSONVILLE FL
 216 PM EDT MON JUN 27 2011

.DISCUSSION...WEAK TROUGHING WILL PRODUCE SCATTERED MAINLY AFTERNOON AND EVENING THUNDERSTORMS OVER THE AREA THE NEXT FEW DAYS. RELATIVE HUMIDITIES WILL REMAIN WELL ABOVE CRITICAL VALUES THROUGH THE WEEK. WEST TO SOUTHWEST PREVAILING FLOW IS EXPECTED WITH SUSTAINED SPEEDS LESS THAN 15 MPH. WINDS WILL BECOME SE NEAR THE ATLANTIC COAST EACH AFTERNOON AND EVENING. THE EAST COAST SEA BREEZE WILL INCREASE WIND SPEEDS TO NEAR 15 MPH AT TIMES. WINDS WILL ALSO BE HIGHER AND GUSTY NEAR THUNDERSTORMS. OUTFLOWS FROM THUNDERSTORMS CAN PRODUCE SUDDEN SHIFTS IN WIND DIRECTION. SLOW MOVING THUNDERSTORMS WILL PRODUCE LOCALLY HEAVY RAINFALL ALONG WITH FREQUENT LIGHTNING STRIKES.

FLZ020>023-030>032-035>037-280915-
 HAMILTON-SUWANNEE-**COLUMBIA-BAKER**-UNION-BRADFORD-CLAY-GILCHRIST-
 ALACHUA-PUTNAM-
 216 PM EDT MON JUN 27 2011

	TUE	TUE NIGHT	WED
CLOUD COVER	PCLDY	PCLDY	PCLDY
CHANCE PRECIP (%)	60	30	70
WEATHER TYPE	TSTMS	TSTMS	TSTMS
TEMP	92	71	93
RH (%)	47	100	47
20FT WND MPH (AM)	S 4		SW 2
20FT WND MPH (PM)	S 8	SW 5	SW 8
PRECIP DURATION	6	1	4
PRECIP BEGIN	8 AM	CONTINUING	8 AM
PRECIP END	CONTINUING	2 AM	CONTINUING
PRECIP AMOUNT	0.21	0.03	0.17
LAL	4	3	4
MIXING HEIGHT(FT-AGL)	5800	200	6000
TRANSPORT WND (MPH)	SW 12	SW 6	SW 13
DISPERSION INDEX	42	2	32
MAX LVORI		8	

.FORECAST FOR DAYS 3 THROUGH 7...

.THURSDAY...MOSTLY CLOUDY. A 50 PERCENT CHANCE OF SHOWERS AND THUNDERSTORMS. LOWS IN THE LOWER 70S. HIGHS IN THE MID 90S. NORTHWEST WINDS 5 TO 10 MPH.

.FRIDAY...PARTLY CLOUDY. A 50 PERCENT CHANCE OF SHOWERS AND THUNDERSTORMS. LOWS IN THE LOWER 70S. HIGHS IN THE MID 90S. NORTHEAST WINDS 5 TO 10 MPH.

.SATURDAY...PARTLY CLOUDY. A 20 PERCENT CHANCE OF SHOWERS AND THUNDERSTORMS. LOWS IN THE LOWER 70S. HIGHS IN THE MID 90S. EAST WINDS 5 TO 10 MPH.

.SUNDAY...PARTLY CLOUDY. A 40 PERCENT CHANCE OF SHOWERS AND THUNDERSTORMS. LOWS IN THE LOWER 70S. HIGHS IN THE MID 90S. SOUTHWEST WINDS 5 TO 10 MPH.

.MONDAY...MOSTLY CLOUDY. A 40 PERCENT CHANCE OF SHOWERS AND THUNDERSTORMS. LOWS IN THE LOWER 70S. HIGHS IN THE MID 90S. SOUTHWEST WINDS 5 TO 10 MPH.

FIRE BEHAVIOR FORECAST

FORECAST NUMBER: 10	TYPE OF FIRE: Wildland Fire
FIRE NAME: Impassable Bay Complex	OPERATIONAL PERIOD: 28 June 2011 Day/Swing Shift
DATE ISSUED: 27 June 2011	TIME ISSUED: 1930
UNIT: Osceola NF Olustee Ranger District	SIGNED: Chris Church – FBAN

INPUTS

WEATHER SUMMARY:Short term...Tuesday through Thursday..Tues thru Wed...very typical summerlike conditions will continue as weak trough lingers in the mid levels across the region. Expect numerous shower and thunderstorm coverage during the afternoon/evening hours both Tue/Wed with max temps in the lower/mid 90s and heat indices topping out close to 105 degrees. Slightly cooler than normal temps aloft will continue to enhance scattered strong isolated severe storms with winds/hail...as well as slow and erratic storm motion to promote localized flooding during stronger storms. Thursday...models all depicting some subsidence and dry air pushing into the southern U.S. around large scale high pressure center west of the region and this should cut back thunderstorm coverage across southeastern Georgia to scattered (30-40%) during the period...while northeastern FL will only fall into the (40-60%) range during the aftn/eve hours.

The KBDI for the fire area is still above the 97th percentile and near records for seasonal average. The most recent ERC measured for this area shows the ERC has risen to the 60th percentile due to yesterdays drying. Fuels are a mixed southern rough element including slash pine and bald cypress with scattered longleaf pine. The understory consists of palmetto, gallberry, and mixed varieties of brush. Areas with timber contain a moderate dead and down component with higher levels of dead and downed in various locations. Most areas of the fire area have brush (fuel model 7) that will carry fire especially with a wind component. Live fuel moistures were verified at 125% for Saw Palmetto/Gallberry and 144% for Slash Pine.

FIRE BEHAVIOR

OUTPUTS

GENERAL:

Conditions could increase slightly with yesterdays high temperatures. RH today 47%, temp at 92, and winds 20 foot, S 4 mph in the morning and S at 8 mph afternoon. Fire behavior should be smoldering, and creeping, with rare intermittent short lived torching, as any T-cells increase winds over your fire. Dispersion index will be moderate at 42. Movement requires a brush component and torching may spot into adjacent fuels. Smoke may impact roaded areas in the early morning hours and as fire activity increases.

Fuel Model	ROS (ch/hr)		Flame Length (ft)		PIG	Spot_Dist
	Head	Backing	Head	Backing		
7- Southern Rough	11	9	8	6	51%	.1 mile
SH8HghLoad,Humid	8	6	10	8	51%	.1 mile

Fire behavior predictions are for the hottest and driest period of the day.

SPECIFIC: Impassable Bay - the fire area will continue to smolder and creep early in the day between Drop Point 1 and Drop Point 2 and in the unburned islands in the interior, but could spread through torching especially later in the day after the last day or so of drying and/or with any significant thunderstorm wind component. Spotting today should be very minimal due to moderate RH's and low wind speeds. Needlecast could soon be an issue as more continues to accumulate by the day. The amount of unburned fuels close to the line in Division A and C should be monitored closely. Kelly Road - This fire is a drier site and is burning in 20 year old rough. There is quite a bit of organic material due to lack of fire, and falling trees could be an issue as organic material has burned out around the root systems. Fire behavior will be smoldering and creeping in the am especially near the bog area in Div Y and also in the northern portion of Div Z, with rare intermittent torching possible in the afternoon with any significant downdraft winds. Spotting should be minimized by moderate RH's and the lower wind speed. Accumulating needlecast is also becoming an issue on this fire.

AIR OPERATIONS:

Smoke inversions will be mostly nonexistent today on the Kelly Road Fire, and the same on the Impassable Bay Fire. Air ops should be smooth early in the day until any sea breezes or thunderstorms infiltrate the area in the afternoon. Chance of rain today could limit air operations due to visibility and potential lightning hazards (LAL4).

SAFETY

Needlecast is dropping on both fires and is creating a reburn potential, be heads up for reburns!

Always maintain good LCES and watch out for each other.

Watch for wind shifts with afternoon sea breeze influences and around any thunderstorms!

INCIDENT RADIO COMMUNICATIONS PLAN		1. Incident Name		2. Date/ Time Prepared		3. Operational Period Date/Time	
		Impassable Bay Complex		06-27-2011 0900		06-28-2011 0730 to 06-29@0200	
4. Basic Radio Channel Utilization							
Radio Type/Cache	Channel	Function	Frequency/Tone		Mode	Assignment	Remarks
King NIFC	1	Tac1	RX 168.0500	Tone 136.5	Narrow	DIV A - B - C - D - E - F	Post Human Repeaters where Needed
King NIFC	2	Tac 2	RX 168.2000	Tone 136.5	Narrow	SWING SHIFT	Post Human Repeaters where Needed
King NIFC	3	Tac3	RX 168.6000	Tone 136.5	Narrow	UNASSIGNED	Post Human Repeaters where Needed
King NIFC	4	Tac 4	RX 166.7250	Tone 136.5	Narrow	DIV Y	Post Human Repeaters where Needed
King NIFC	5	Tac 5	RX 166.7750	Tone 136.5	Narrow	DIV Z	Post Human Repeaters where Needed
King NIFC	6	CMD	RX 173.0375	Tone None	Narrow	COMMAND WEST	Linked to Channel 7
King NIFC	7	CMD	RX 166.6125	Tone 136.5	Narrow	COMMAND EAST	Linked to Channel 6
King R 8	8	R - 8 Fire	RX 169.9000	Tone 136.5	Narrow	Local IA	Post Human Repeaters where Needed
King DOF 190	9	DOF 190	RX 151.2725	Tone None	Narrow	Primary IA for off Forest	Post Human Repeaters where Needed
King DOF 191	10	DOF 191	RX 151.2875	Tone None	Narrow	Local IA	Post Human Repeaters where needed
King NIFC	11	FOREST	RX 171.5500	Tone 167.9	Narrow	Olustee Forest Repeater	Forest Dispatch
King NIFC	12	FOREST	RX 171.5500	Tone 146.2	Narrow	Eddy Forest Repeater	Forest Dispatch
King NIFC	13	A/G 1	RX 166.6375		Narrow	Air to Ground Primary	AIR to Ground Primary Div Y & Z
King NIFC	14	A/G 2	RX 168.1250		Narrow	Air to Ground Secondary	Air to Ground Secondary Div A/B/C/D/E/F - IA
King NIFC	15	White	RX 154.2800	Tone None	Narrow	Local IA	
King NIFC	16	Air Guard	RX 168.6250	Tone 110.9	Narrow	Air Guard	Emergency Use Only Tone 110.9

5. Prepared by (Communications Unit) Walter Warrick COML

MEDICAL PLAN	1. Incident Name	2. Date Prepared	3. Time Prepared	4. Operational Period				
	Impassable Bay Complex	6/27/2011	0900	6/28/2011 & Swing				
5. Incident Medical Aid Station								
Medical Aid Stations	Location					Paramedics		
						Yes	No	
ICP	OLUSTEE, FLORIDA					X		
6. Transportation								
A. Ambulance Services								
Name	Address			Phone		Paramedics		
						Yes	No	
BAKER COUNTY EMS	MACCLENNY			904-259-2861		X		
COLUMBIA CO. EMS	LAKE CITY			904-758-9111		X		
B. Incident Ambulances								
Name	Location					Paramedics		
						Yes	No	
7. Hospitals								
Name	Address	Travel Time		Phone	Helipad		Burn Center	
		Air	Grnd		Yes	No	Yes	No
LAKE SHORE	LAKE CITY	15 MIN	20 MIN.	386-292-8001	X			X
					X			X
URGENT CARE	LAKE CITY	15 MIN	20M IN	386-758-2944		X		X
ED FRASER MEM.	MACCLENNY	15 MIN	20 MIN	904-259-3151	X			X
UNIV.MED. JACKSONVILLE	JACKSONVILLE	20 MIN	45 MIN.	904-549-4165	X			X
SHANDS HOSPITAL	GAINESVILLE FL	30 MIN	1 HRS	352-494-5616	X		X	
LIFE FLIGHT	JACKSONVILLE	30 MIN		904-202-2136	X			
8. Medical Emergency Procedures								
<p>Upon occurrence of a “MAJOR” medical or accident involving significant injury on the fireline. The nearest fireline Supervisor or Leader on the scene will be in charge and will clear all radio traffic on the incident “Command” Channel. The command channel will be used to coordinate response – do <i>not</i> use names.</p> <ul style="list-style-type: none"> o Obtain and facilitate nearest EMT’s to the scene, request medical unit response – DIVS in charge of scene. o Coordinate and facilitate appropriate transportation for injured with Medical Unit – EMT in charge of patient(s). o Nature of problem: # injured; Condition and Vitals; Location (GPS Coordinates) o Remove all unnecessary personnel from the accident scene – notify SOFR. o Secure the scene area and identify witnesses for later investigation – keep a log. o Use emergency form on back of medical plan to report to communications. <p style="text-align: center;">Life safety is the Number 1 Priority on this Incident</p>								
9. Prepared by (Medical Unit Leader)				10. Reviewed by (Safety Officer)				
DEB LOPEZ MATT PAYNE(T)				STEVE DAVIS				

COMMUNICATION FOR INJURY/MEDICAL EMERGENCY

Do not use the name of the Injured individual over the radio. In the event of a minor injury, so state when relaying the information so a false sense of urgency is not. The Medical Unit Leader is to be notified in all injury situations.

Date: _____ Time: _____ Division _____

Location: _____

On Scene Point of Contact (Name & Position): _____ Radio Frequency _____

Medical personnel on site (name) _____

Type of Injury: _____

Sex _____ Age _____

Medical Injury _____ or Illness _____ Life Threatening Yes _____ No _____

Patient Condition- Critical _____ Serious _____ Minor _____ Conscious Yes _____ No _____

Additional medical equipment or personnel needed? (Type and Quantity) _____

Is air transportation needed: Yes _____ No _____ Can Patient sit up Yes _____ No _____ Weight _____

Location LAT _____ LONG _____ Drop Point _____

Patient Home Unit _____ Agency _____

Assessment BP _____ Pulse _____ Level of Consciousness _____ Skin _____

Difficulty Breathing Yes _____ No _____

On going Assessment- Document as they occur – on Scene personnel,

Accident Incident within an Incident

The **Incident Commander** is responsible for overall action in case of a serious accident.

Upon occurrence of a “**MAJOR**” accident involving significant injury or fatality on the fireline, the highest qualified person on scene shall take control of the situation until the nearest **Division Supervisor** arrives on scene to assume control. Immediate and clear communication must be established between Operations and Division/Group Supervisors to determine who can arrive at the scene quickest and gain control of the situation. In the event of such an accident in camp or on incident roads on-site personnel shall take control until an **Operations Chief or Division Supervisor** arrive or **Local Law Enforcement** and or **Medical personnel** have assumed control.

The **Incident Dispatcher or Responsible Operations Individual** in charge of the accident will take immediate action to clear all radio traffic on the incident “Command Channel” by broadcasting **"Emergency Traffic Only"**, so that quick and proper coordination for handling the accident can take place.

Upon arrival at the accident scene, whoever has been designated to manage the situation (Ops or DIVS) should take immediate actions to:

- Obtain and facilitate EMT's to the scene – notify them you are in charge.
- Co-ordinate and facilitate appropriate transportation for injured.
- Move all unnecessary personnel from the accident scene.
- Secure the scene area and identify witnesses for investigation.

The **Safety Officer** will respond immediately to the scene of the accident to assist the Operations Chief or Division/Group Supervisor and shall be responsible for initiating the proper investigation and documentation by qualified personnel.

Immediately upon notification of an accident requiring emergency action the **Medical Unit Leader and Incident Commander** shall respond to incident communications.

Plans Chief, Logistics Chief, Finance Chief and **Information Officer** shall be notified and respond to incident communications in an appropriate manner that will not significantly affect ongoing operations.

The **Logistics Chief** shall attempt to control external communication, phones and radio. All information released from the incident shall be through the incident Information Officer with the approval of the Incident Commander.

The **Plans Chief** will make contact with the Agency Administrator who will in turn contact appropriate officials of the agency. If the accident involves a fatality, the Agency Administrator will contact the Sheriff's Office, the Coroner's Office, and the employing agency of the victim and will find out who will contact family members. The Plans Chief

will assure that an individual is assigned to document all communications regarding the accident.

At no time during the accident/fatality evacuation process will the name of the victim(s) be used.

The need of a *Critical Incident Stress Debriefing* for incident personnel will be discussed by the Core Team with input from the Medical Unit Leader, the Human Resource Specialist, and local / involved individuals. The Incident Commander will approve such debriefings.

Approved by:

Incident Commander

Date

KIDD'S Incident Management Team Cell Phone List

<i>Position</i>	<i>Name</i>	<i>Cell</i>
Command & General:		
ICT2	John Kidd	208-869-5979
ICDP	Tom Suwyn	435-864-7064
SOFR	Steve Davis	208-313-7835
SOF2	Ken Moore	435-313-2248
PIO2	Kirsten Cannon	702-595-2034
PIO2	Dick Birger	651-769-5952
OSC2	Tracy Swenson	435-553-5926
AOBD	Jill McCurdy	208-387-5737
OSC2	Colt Mortenson	970-756-4831
LSC2	Brent Crosland	435-253-2054
FSC2	Mike Taylor	435-592-0006
PSC2	Evan Boshell	435-691-9331
Operations:		
DIVS	Jason Kirks	435-259-9635
DIVS	Clint Coates	435-691-7272
DIVS	Brian Keating	435-259-9691
DIVS	Daren Turner	801-977-4337
ASGS	Chris Gamble	435-790-7095
ATGS	Dave McCormick	509-449-0804
HEB1	Don Nicolas	218-360-1816
ABRO	Darold Williams	386-752-0600
ATB MGR	Darrell Bohanon	386-758-9078
ATGS	Mike Melton	435-590-4712
Planning:		
RESL	Clark Tucker	435-823-6044
RESL	Renee Flanagan	435-368-5107
SITL	Lou Ballard	208-859-8359
GIST	Sarah Peterson	208-830-3104
FBAN	Chris Church	208-921-8656
DMOB	Linda Chappell	435-979-8356
READ	Carl Petrick	850-524-1233
CTSP	Heidi Little	801-618-5240
Logistics:		
COMT	Walter Warrick	208-313-4667
SPUL	Nan Coates	435-691-1218
FACL	Duane Stewart	435-616-8750
GSUL	Varian Allen	435-749-7164
EPQM	Art Partridge	435-979-4322
FUDL	Shannon Swann	702-271-6765
BCMG	Sean Stewart	435-616-2580
SECM	Randy Davis	435-691-3226
MEDL	Deb Lopez	435-406-1210
Finance:		
TIME	Stacy Heaps	435-287-7013
COST	Wendy Soper	435-590-4728
Trainees		
ICT2	Tracy Dunford	801-558-6508
AOBD	Kevin Greenhalgh	435-691-3771
DIVS	Tyko Isaacson	208-634-0379
DIVS	Bryan Brazzeal	435-680-3625
MEDL	Matt Payne	435-770-3391
OSC2	Brook Chadwick	801-541-6173

RESTAURANTS

Texas Roadhouse: 386-758-0074

Porterhouse Grill: 386-754-5907

Cracker Barrel: 386-755-5638 (Breakfast)

Applebee's: 386-752-7087

Blue Roof Grill: 386-719-2424

Pizza Hut: 386-752-3896

I-HOP : (Breakfast and Dinner)

Rates:

Breakfast = \$7.00

Lunch = \$11.00

Dinner = \$23.00

Tips will be paid by Government.

KIDD'S MANAGEMENT TEAM SUPPLY ORDER

Date & Time Order was Placed	Order # (DIVS + #)	Location & Time for Delivery (Division/LZ/DP/Lat Long)	Mode of delivery (Driven/Helo/DIVS to Pick up)	
Order received in Communications by (name):			Time:	
Order received in Supply by (name):			Time:	
Order received in Transportation by (name):			Time:	
Order received in Helibase by (name):			Time:	
Order shipped to line unit by (name): (Send this sheet to the line with the order)			Time:	
#	Item	Amount	Item	Amount
1.	Meals Breakfasts		26. Swivel ea.	
2.	Meals Lunches		27. Leadline ea.	
3.	Meals Dinners		28. Backpack Pump ea.	
4.	Meals MRE's/case		29. Slingable Blivet ea.	
5.	Water 5 gal. cubies		30. Folding Tank Size/ea.	
6.	Gatorade Case		31. Pumpkin Size/ea.	
7.	Batteries AA 1-Flat		32. Hose 1 ^{1/2} " / ft.	
8.	Batteries Specify Type		33. Hose 1" / ft.	
9.	Flagging (Specify type) # Roll		34. Hose 3/4" / ft.	
10.	Sleeping Bags ea		35. Reducer 1 ^{1/2} "X1"	
11.	Tarps/Plastic ea./roll		36. Reducer 1"X 3/4"	
12.	Parachute Cord roll		37. Gated "Y" 1 ^{1/2} "	
13.	Garbage Bags Box		38. Gated "Y" 1"	
14.	20 Man First Aid Kit ea.		39. Gated "Y" 3/4"	
15.	Coffee Kit w/propane ea.		40. Shut-off Valve 3/4"	
16.	Gas Raw		41. In-line Tee 1 ^{1/2} "X1"	
17.	Bar Oil Gal.		42. Nozzle 1 ^{1/2} "	
18.	2- cycle oil QT's		43. Nozzle 1"	
19.	Tool Shovel ea.		44. Nozzle 3/4"	
20.	Tool Pulaski ea.		45. Chainsaw Kit ea.	
21.	Tool Combi ea.		46. Mark 3 Pump Kit-Cache w/10 gal raw gas and 2 qts 2 cycle oil ea.	
22.	Tool Specify Type ea.			
23.	Fusee Case		47. Lightweight Pump Kit-Cache w/5 gal raw gas and 1 qt 2 cycle oil ea.	
24.	Drip Torches Full ea.			
25.	Drip Torch Mix 5 Gal.		48. Division Hose Lay Kit ea.	

GPS Datum: NAD 83**Team Ordering/ Timeline Process:**

0630 – Morning Briefing, start of crew time.

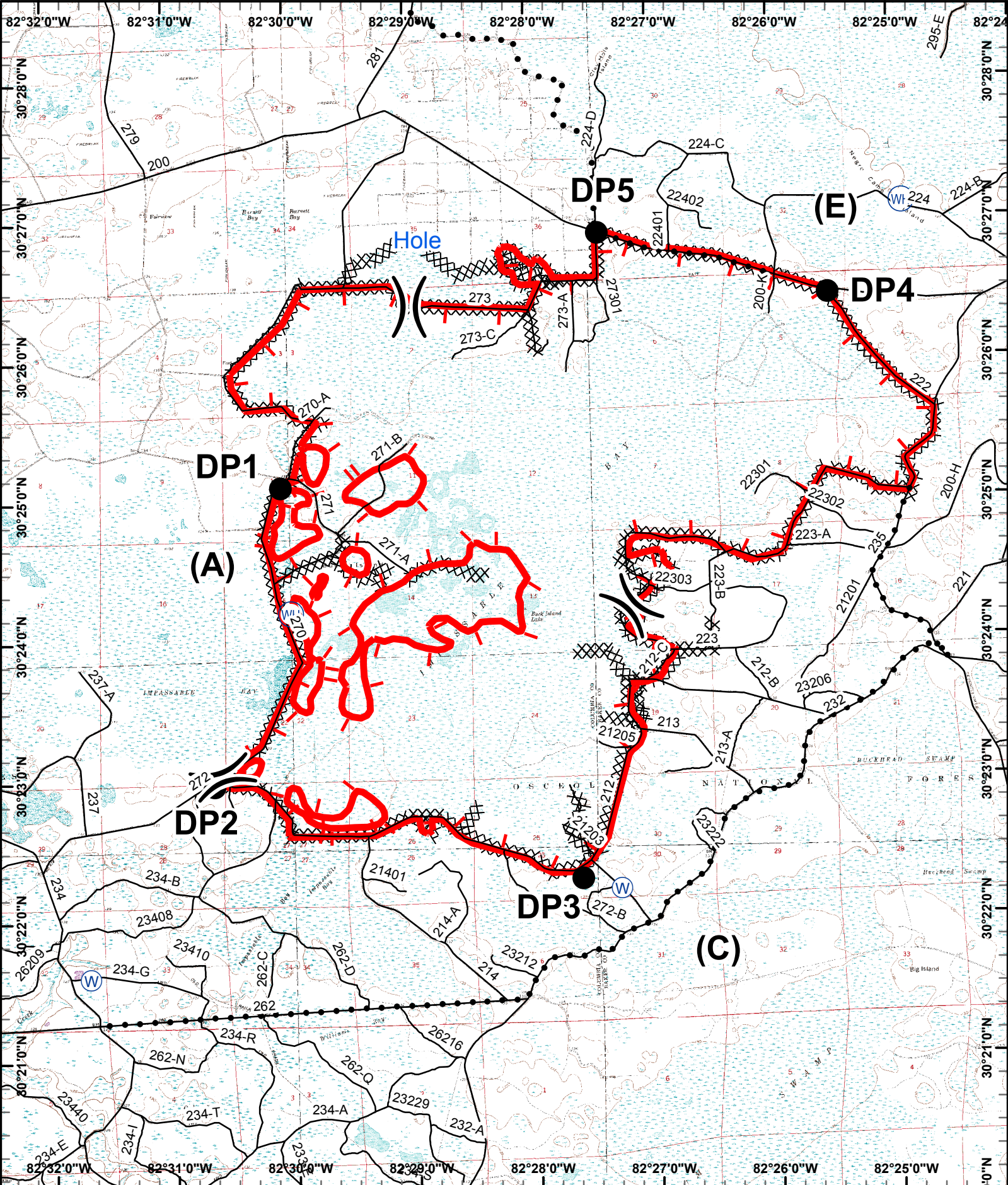
1100 – Last call to change spike camp resource (food, fuel, etc) location.

1500 – DIVS to have next day’s resource order ready for OPS.

- All crew level orders will be placed through DIVS.
- DIVS will place all orders through Communications Unit.
- All orders will be tracked using the process found on the front of form.



Division Hose Lay Kit Components

Item	NFES#	Quantity			
Hose 1½”	1239	1000’			
Hose 1”	1238	1000’			
Hose, ¾”	1016	500’			
Tee, 1 ½” – 1”	0731	5			
Nozzle, 1 ½”	0137	2			
Nozzle, 1”	0138	6			
Nozzle, ¾”	0136	12			
1 ½” Gated “Y”	0231	5			
1” Gated “Y”	2059	5			
¾” Gated “Y”	0272	6			
Shut off valve ¾”	0738	4			
Reducers, 1 ½” – 1”	0010	5			
Reducers, 1” – ¾”	0733	5			
Double Female 1”	0710	1			
Double Female 1 ½”	0857	1			



- Division
- Drop Point
- Water Source
- Helispot & Dipsite
- Active Fire Perimeter
- Contingency Line
- Dozer Line and Improved Line

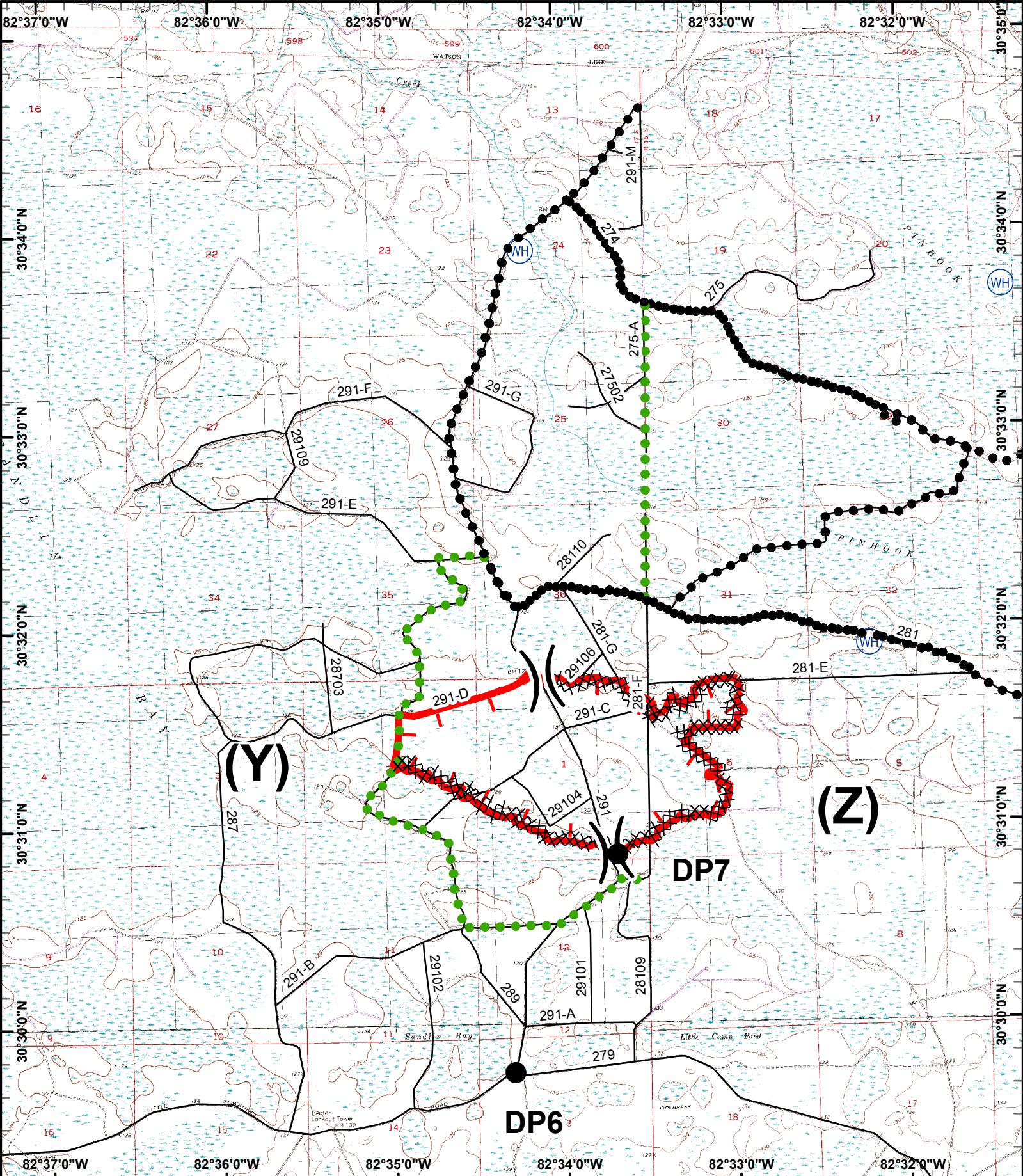
Created June 27, 2011 1200
s.peterson

0 0.5 1 Miles

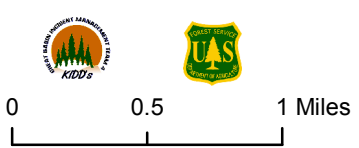


Impassable Bay Fire
 June 28, 2011
 FL-FNF-011028
 11,305 Acres



- Division
- Completed Contingency Line
- Drop Point
- Planned Contingency Line
- Water Source
- Dozer Line and Improved Line
- Helispot & Dipsite
- Active Fire Perimeter

Created June 27, 2011 1300
s.peterson



Kelly Rd Fire
 June 28, 2011
 FL-FNF-011028
 825 Acres

