

IMPASSABLE BAY FIRE



WEDNESDAY, JUNE 22, 2011

0700-2100

P8F4N2
(0805)

GPS: NAD 83 - FORMAT : DD MM. MM

INCIDENT OBJECTIVES	1. Incident Name	2. Date Prepared	3. Time Prepared
	Impassable Bay Fire	6/21/2011	2000
4. Operational Period 6/22/2011 0700-1900			
5. General Control Objectives For The Incident (Include Alternatives)			
<ol style="list-style-type: none"> 1. Provide for the safety of all incident personnel and the public, by adhering to all established guidelines and protocols. 2. Keep fire within the Impassable Bay swamp by using Forest Service Roads 270, 200, 222, 235, 232, 212 and 272, and contain the Kelly Road Fire south of 281 road, east of 287, north of Suwannee road and minimize growth on private land. 3. Manage the fire in a manner that is safe and cost effective for the values at risk. 4. Maintain a positive working relationship with our State and Federal partners and adjacent landowners by initiating and maintaining timely communications. Work closely with designated landowner (GOAL) representatives and adjacent county/state agencies to ensure that fire suppression and incident on respective lands are fully coordinated. 5. Together with the Florida Division of Forestry (DOF), coordinate fire management activities to maximize efficient use of wildland and structural resources on private and public lands including urban interface structures, timber, and sensitive habitats. Develop structure protection plans where necessary and minimize the impact to the private timber industry. 6. Provide initial attack resources as directed in the Delegation of Authority. 7. Prepare and implement a Rehabilitation Plan for current and future fires. 8. Minimize adverse effects to Cultural Resources through minimally ground disturbing suppression tactics, recording and flagging sites and avoid if possible. Report unauthorized digging or collection of sites. Record location of dozer lines and/or mechanically improved roads for rehabilitation needs. 			
6. Weather Forecast For Period			
See attached weather			
7. General Safety Message			
Drive defensively and with headlights on. Drink plenty of water and take frequent rest breaks. Ensure LCES is in place and known by all personnel.			
8. ATTACHEMENTS (X IF ATTACHED)			
<input checked="" type="checkbox"/> Organization List - ICS 203 <input checked="" type="checkbox"/> Medical Plan - ICS 206 <input checked="" type="checkbox"/> <u>Air Ops Summary</u> <input checked="" type="checkbox"/> Division Assignment Lists - ICS 204 <input checked="" type="checkbox"/> Incident Map <input checked="" type="checkbox"/> <u>Fire weather forecast</u> <input checked="" type="checkbox"/> Communications Plan - ICS 205 <input type="checkbox"/> Traffic Plan <input checked="" type="checkbox"/> <u>Fire Behavior forecast</u>			
9. Prepared By (Planning Section Chief)		10. Approved By (Incident Commander)	
EVAN BOSHELL		JOHN KIDD	

ORGANIZATION ASSIGNMENT LIST		9. Operations Section	
1. Incident Name IMPASSABLE BAY FIRE		Field Operations	Colt Mortenson Brook Chadwick (T)
2. Date Prepared June 22, 2011		Planning Operations	Tracy Swenson
3. Time 2000		a. Branch I	
4. Operational Period DAY SHIFT JUNE 22, 2011 0700-2100		Branch Director	
Position	Name	Division/Group	IA Mike Strange
5. Incident Commander		Division/Group	A/B Daren Turner
Incident Commanders	John Kidd	Division/Group	C/D Jason Kirks Bryan Brazeal
Deputy Incident Commander	Tom Suwyn	Division/Group	E/F Jacob Gibson
Incident Commander (T)	Tracy Dunford	Division/Group	Y-Kelly Clint Coates Tyko Isaacson
Safety Officers	Steve Davis/Ken Moore	Division/Group	Z-Kelly Brian Keating
Information Officer	Dick Birger Kirsten Cannon	Division/Group	
6. Agency Representative		b. Branch II	
Agency	Name	Branch Director	
FS – Forest Supervisor	Susan Jeheber-Matthews	Division/Group	
FS – Agency Admin. Rep.	Ivan Green – DFR	c. Branch III	
FS – Agency Admin. Rep.	Ron Smith	Branch Director	
Resource Advisor - FS	Carl Petrick	Division/Group	
Florida DOF	Barry Coulliette	d. Air Operations Branch	
7. Planning Section		Air Operations Branch Director	Jill McCurdy
Chief	Evan Boshell	AOBD(T)	Kevin Greenhalgh
Resources Unit	Clark Tucker	ABRO	Darold Williams
Documentation Unit	Clark Tucker	Air Tactical Group Supervisor	Mike Melton
Demob Unit	Linda Chappell	Air Tactical Group Supervisor	Dave McCormick
Situation Unit	Lou Ballard	Air Support Group Supervisor	Chris Gamble
FBAN	Chris Church	Helibase Manager T-1	Don Nicholas
IMET		ATB Mgr.	Darrell Bohanon
GIS Specialist	Sarah Peterson	10. Finance Section	
Training Specialist		Chief	Mike Taylor
Computer Specialist	Heidi Little	Time Unit	Stacey Heaps
Status/Check-in		Cost Unit	Wendy Soper
8. Logistics Section		Compensation/Claims Unit	
Chief	Brent Crosland	Procurement Unit Leader	
LSC2(T)	Varian Allen	Prepared by Resource Unit Leader	
Supply Unit	Nan Coates	CLARK TUCKER	
Facilities Unit	Duane Stewart		
Ground Support Unit	Art Partridge		
Communications Unit	Walter Warrick		
Medical Unit	Deb Lopez		
Ordering Mgr	Randy Davis		
Food Unit	Shannon Swann		

Division Assignment List		1. Branch		2. Division/Group Z - Kelly			
3. Incident Name IMPASSABLE BAY		4. Operational Period 06/22/11 Wednesday Day Shift 0700 - 2100					
5. Operations Personnel							
Operations Chief	COLT MORTENSON	Division/Group Supervisor	BRIAN KEATING				
Operations Chief	TRACY SWENSON	Air Attack Supervisor	MICHAEL A MELTON				
Operations Chief(T)	BROOK CHADWICK	Safety Officer	LYLE G KLENSKI				
6. Resources Assigned this Period							
Strike Team/Task Force/ Resource Designator	Leader	Num of Pers.	Trans. Y/N	Drop Off PT./Time	Pick Up PT./Time		
EMT	SCOTT PANNELL	1	N	ICP/0700	STATION/2100		
TFLD(T)	HART	1	N	ICP/0700	STATION/2100		
ENG 462	BELL	2	N	ICP/0700	STATION/2100		
ENG 705	WESON	3	N	ICP/0700	STATION/2100		
ENG 22 - WILD. WAREHOUSE	CIRONE	3	N	ICP/0700	STATION/2100		
ENG 35	ROBERTS	3	N	ICP/0700	STATION/2100		
ENG 5862	PLACKO	3	N	ICP/0700	STATION/2100		
ENG RED ROCK 1	KRESNESS	2	N	ICP/0700	STATION/2100		
ENG RED ROCK 7	BENOY	3	N	ICP/0700	STATION/2100		
ENG BRUSH 2	TALBOT (6/30)	3	N	ICP/0700	STATION/2100		
ENG BRUSH 74	ODEN	3	N	ICP/0700	STATION/2100		
DOZER 2		1	N	ICP/0700	STATION/2100		
DOZER 65		1	N	ICP/0700	STATION/2100		
W/T		1	N	ICP/0700	STATION/2100		
7. Control Operations IMPROVE LINES AND MOPUP.							
8. Special Instructions INSURE LCES IS IN PLACE. DRIVE DEFENSIVELY WITH LIGHTS ON AT ALL TIMES.							
9. Division/Group Communications Summary							
Function	Frequency - RX	Frequency - TX	Tone	System	Channel	System	Channel
Command	173.0375	167.3250	136.5	NIFC	6		
Tactical Div/Group	166.7750	166.7750	136.5	NIFC	5		
Logistics							
Air to Ground	166.6375	166.6375		NIFC	13		
Prepared by (Resource Unit Leader) CLARK TUCKER		Approved by (Planning Section Chief) EVAN BOSHELL			Date Prepared 06/21/11		Time Prepared 0808

ICS 220 - Continued

10. TASK/ MISSION/ ASSIGNMENT (Type/ function includes: Air Tactical, Retardant, Recon, Personnel Transport, Bucket Operations, SAR, etc.)					
TYPE/FUNCTION	PRIORITY	NAME OF PERSONNEL OR CARGO (If applicable) or instructions for tactical aircraft	MISSION START	FLY FROM	FLY TO
Air Tactical		Coverage by ATGS as needed or requested by OPS.	0900	ATB	Fire
Retardant Drops		Requested by DIVS through ATGS and approved by OPS.	1000	ATB	Fire
Water Drops		Requested by DIVS through ATGS and approved by OPS.	0900	Helibase	Fire
Medical Transport		Crew Boss contact DIVS; DIVS contact ATGS for medical evacuations/transport.	As Requested	Helibase	Fire
Recon		As requested and approved by OPS.	As Requested	Helibase	Fire
Initial Attack		As directed by OPS.			

Helibase, Dip Sites, Pick Up Sites, etc.	Helispots, Sling Spots, Repeater Sites, etc.
Helibase 30° 11' 13" x 82° 34' 27"	

VI. Wind Restrictions.

The capability to fly a helicopter in excessive wind conditions varies considerably with the weight class of the helicopter and the degree of turbulence associated with the wind. If the helicopter flight manual or the helicopter operator's policy does not set lower limits, the following shall be used. These limits may be further restricted at the discretion of the Pilot or other air operations personnel. Limitations are as follows:

**FLIGHT ABOVE GROUND LEVEL
FLIGHT PERMITTED IN WINDS LESS THAN / MAXIMUM GUST SPREAD (in knots)**

Flights More Than 500' AGL		
Type 1 Helicopters	Type 2 Helicopters	Type 3 Helicopters
50 kts (43 mph) / Gusts: N/A	50 kts (43 mph) / Gusts: N/A	50 kts (43 mph) / Gusts: N/A
Flights Less Than 500" AGL		
Type 1 Helicopters	Type 2 Helicopters	Type 3 Helicopters
40 kts (35 mph) / 15 (13 mph) kts	40 kts (35 mph) / 15 (13 mph) kts	30 kts (26 mph)/15 kts (13 mph)

Approved by: /s/ Jill McCurdy, AOBD

FIRE WEATHER PLANNING FORECAST FOR NORTHEAST FLORIDA/SOUTHEAST GEORGIA
 NATIONAL WEATHER SERVICE JACKSONVILLE FL
 304 PM EDT TUE JUN 21 2011

MOISTURE WILL GRADUALLY INCREASE OVER THE AREA ON WEDNESDAY. MINIMUM RELATIVE HUMIDITY VALUES WILL BE JUST BELOW 35 PERCENT OVER PORTIONS OF THE INTERIOR...BUT DURATIONS SHOULD REMAIN LESS THAN 4 HOURS AND WINDS.RAIN CHANCES WILL INCREASE LATE IN THE WEEK AS A STRONGER UPPER LEVEL DISTURBANCE APPROACHES THE AREA AND THE STRONG UPPER RIDGE WEAKENS.

FLZ023-030-031-036-220900-
 BAKER-UNION-BRADFORD-ALACHUA-
 304 PM EDT TUE JUN 21 2011

	TONIGHT	WED	WED NIGHT	THU
CLOUD COVER	PCLDY	PCLDY	PCLDY	PCLDY
CHANCE PRECIP (%)	20	30	30	60
WEATHER TYPE	TSTMS	TSTMS	TSTMS	TSTMS
TEMP	72	97	73	92
RH (%)	97	36	99	45
20FT WND MPH (AM)		LGT/VAR		LGT/VAR
20FT WND MPH (PM)	SW 5	SW 6	SW 6	SE 3
PRECIP DURATION	1	1	1	4
PRECIP BEGIN	CONTINUING	2 PM	CONTINUING	NOON
PRECIP END	9 PM	CONTINUING	9 PM	CONTINUING
PRECIP AMOUNT	0.03	0.09	0.04	0.25
LAL	2	3	3	4
MIXING HEIGHT(FT-AGL)	300	8500	200	6800
TRANSPORT WND (MPH)	W 8	S 5	NW 6	S 6
DISPERSION INDEX	3	21	2	20
MAX LVORI	6		7	

REMARKS...NONE.

.FORECAST FOR DAYS 3 THROUGH 7...

.FRIDAY...SHOWERS AND THUNDERSTORMS LIKELY. LOWS IN THE LOWER 70S. HIGHS IN THE LOWER 90S. SOUTHWEST WINDS 5 TO 10 MPH.

.SATURDAY...PARTLY CLOUDY WITH A 50 PERCENT CHANCE OF SHOWERS AND THUNDERSTORMS. LOWS AROUND 70. HIGHS IN THE LOWER 90S. SOUTHWEST WINDS 5 TO 10 MPH.

.SUNDAY THROUGH MONDAY...PARTLY CLOUDY WITH A 50 PERCENT CHANCE OF SHOWERS AND THUNDERSTORMS. LOWS IN THE LOWER 70S. HIGHS IN THE LOWER 90S. SOUTHWEST WINDS 5 TO 10 MPH.

.TUESDAY...PARTLY CLOUDY WITH A 40 PERCENT CHANCE OF SHOWERS AND THUNDERSTORMS. LOWS AROUND 70. HIGHS AROUND 90. SOUTHWEST WINDS 5 TO 10 MPH.

FIRE BEHAVIOR FORECAST

FORECAST NUMBER: 4	TYPE OF FIRE: Wildland Fire
FIRE NAME: Impassable Bay	OPERATIONAL PERIOD: 22 June 2011
DATE ISSUED: 21 June 2011	TIME ISSUED: 1930
UNIT: Osceola NF Olustee Ranger District	SIGNED: Chris Church – FBAN

INPUTS

WEATHER SUMMARY: Discussion... near record heat continues into Wednesday followed by increasing rain chances. Strong ridge of high pressure over the region will persist into Wed. Hotter than normal temperatures are expected yet another day before seasonal temps make a comeback on Thurs. Maxes will be in the upper 90s and possibly 100. Afternoon heat indices are mostly 100-105 with pockets of 105-110 possible. The good news is the aforementioned ridge is forecast to weaken and drift south. The interaction of increasing moisture will bring increasing coverage of precipitation...with numerous showers expected Thursday afternoon.

FUELS:

The KDBI for the fire area is above the 97th percentile and near records for seasonal average. The most recent ERC measured for this area shows the ERC just below the 90th percentile. Fuels are a mixed southern rough element including slash pine and bald cypress with scattered longleaf pine. The understory consists of palmetto, gallberry, and mixed varieties of brush. Areas with timber contain a moderate dead and down component with higher levels of dead and downed in various locations. Most areas of the fire area have brush (fuel model 7) that will carry fire especially with a wind component. Live fuel moistures are extremely low, and will be listed as soon as they can be verified by local personnel.

OUTPUTS

FIRE BEHAVIOR

GENERAL:

Conditions should moderate slightly over Tuesday as cloud cover moves into the fire area. RH 36%, temps at 96, and winds 20 foot, light and variable in the morning and SW at 6 mph afternoon. Fire behavior should be smoldering, creeping, and torching as the RH drops throughout the burn period. Dispersion index will be low at 21, which should limit rapid fire growth somewhat compared to the last couple of days. Movement requires a brush component and torching may spot into adjacent fuels. Smoke may impact roaded areas in the early morning hours and as fire activity increases.

Fuel Model	ROS (ch/hr)		Flame Length (ft)		PIG	Spot_Dist
	Head	Backing	Head	Backing		
7- Southern Rough	29	20	6.1	4	69%	.2 mile
TU2 Timber	12	9	3.6	3	69%	.2 mile

Fire behavior predictions are for the hottest and driest period of the day.

SPECIFIC: Impassable Bay The fire area will continue to smolder and creep early in the day between Drop Point 1 and Drop Point 2, but could spread through group torching, and spotting, especially later in the day with any NE wind component. Brush and downed logs will be more of a factor in fire spread as our large diameter fuels continue to dry. The amount of unburned fuels close to the line in Division A and C should be monitored closely. Kelly Road This fire is a drier site and is burning in 20 year old rough. There is quite a bit of organic material due to lack of fire, and falling trees could be an issue as organic material has burned out around the root systems. Fire behavior will be smoldering and creeping in the am, with group torching and spotting possible in the afternoon.

AIR OPERATIONS:

Smoke inversions should continue in the early morning hours and possibly until mid morning. Smoke may be heavy due to the smoldering behavior of the fire. Air ops should be smooth with light winds once any inversion in the fire area lifts, and until any sea breezes infiltrate the area in the late afternoon.

SAFETY

KDBI is at record levels for this time of year, this should be a huge watch out for all resources on the fireline.
 Watch for wind shifts with afternoon sea breeze influences!
A MOMENT FOR SAFETY CAN LAST A LIFETIME!!!!!!!!!!!!



SAFETY MESSAGE

SAFETY IS OUR FIRST PRIORITY

Fire fighter safety comes first on every fire, every time



LCES FIRE FIGHTERS CODE OF CONDUCT IRPG WORK-REST GUIDELINES

Lookouts Communications Escape Routes Safety Zones

Make Sure LCES Is In Place

Each firefighter must know the interconnection of LCES - lookouts, communications, escape routes, and safety zones. LCES should be established before fighting the fire: Select lookouts, set up a communications plan, choose escape routes, and select safety zones.

USE THE INCIDENT RESPONSE POCKET GUIDE DAILY

Assess The Situation

Identify Hazards

Determine Hazard Controls



L.C.E.S
↓



LOOKOUTS COMMUNICATIONS ESCAPE ROUTES SAFETY ZONES

MAKING LCES WORK:

- **Train lookouts** to observe the wildland fire environment and to anticipate and recognize fire behavior changes.
- **Position lookouts** where both the hazard and the firefighters can be seen.
- **Set up communications** system - radio, voice, or both - by which the lookout warns promptly and clearly of approaching threat.
- **Establish at least two** escape routes and make them known.
- **Re-establish escape routes** as their effectiveness decreases. (As firefighters work along the perimeter, fatigue and distance increase the time required to reach a safety zone.)
- **Establish safety zones** - locations where the threatened firefighter may find adequate refuge from the danger.

MAJOR HAZARDS AND RISKS

- | | |
|---|--|
| <ul style="list-style-type: none"> • Snags—heads up! • Bugs, Alligators, Snakes—LEAVE ALONE • Spotting and torching--LCES • Extreme fire behavior with RH below 40% • Multiple aircraft | <ul style="list-style-type: none"> • Dehydration—drink plenty of fluids • Driving—Narrow Roads, Sand • Traffic through rural/residential areas • Weather becoming hotter and drier • If you do not wear the proper PPE, you are at risk of being injured or killed |
|---|--|

DEHYDRATION

75% of Americans are chronically dehydrated. Dehydration is loss of water and important blood salts like potassium (K+) and sodium (Na+). Vital organs like the kidneys, brain, and heart can't function without a required minimum of water and salt. Fluid losses up to 5% are considered mild (even mild dehydration will slow metabolism as much as 3%); up to 10% are considered moderate; and up to 15% are considered severe. Severe dehydration can result in cardiovascular collapse and death if not treated quickly.

Diuretics cause excessive urination and consequent dehydration. Keep in mind that diuretics are not complementary to work activity that spans a period exceeding 30 minutes at a moderate to high intensity of effort, especially in dry, warm climates. Diuretics thicken the blood, diminish circulatory nutrient movement, result in dangerously increased body temperatures, and most commonly, stress the heart muscle. At 2% dehydration, performance will fall off by 10-20% and is the #1 trigger of daytime fatigue. Of course the use of diuretics are not the leading cause of most heat injuries. Simple dehydration resulting from poor dietary habits (low fluid intake) and the use of certain medications, to include some blood pressure medicines, coupled with an extraordinary activity performance in a hot, dry climate is likely the leading cause of heat stroke and heat exhaustion.

At rest, a person should drink 4 quarts of water per day. If it is hot, or a person is working hard, they may need to drink a minimum of 1 quart of water per hour. The maximum amount of Gatorade consumed per day should be three 12-ounce bottle

Safety Officers: Ken Moore, Steve Davis, Lyle Klenski, Robert Brittain

DIV		TACTICAL WATCHOUTS	LCES HAZARD CONTROL ** Denotes Common Denominator of Tragedy Fires
ALL	X X X X X	Underslung Fireline Mid-slope Fireline Unburned Fuel Indirect Fireline Downhill Fireline Frontal Assault Unanchored Small→Large Fire**	<ul style="list-style-type: none"> • Staff dedicated lookouts at pre-identified vantage points • Staff aerial lookout. During major threatening activity, assess & provide direction • Establish human repeater site • Take hourly weather observations over command frequency • Abort assignment if communications cannot be maintained • Weather watch system to be developed by FBAN/Meteorologist • Flag, time improve/construct multiple escape routes and safety zones • Establish situation trigger points for disengagement/exit to safety zones
ALL		Multiple Aircraft	<ul style="list-style-type: none"> • Air Operations ensures that all incident aviation personnel are briefed on daily tactics, planned use, and safety hazards • Maintain positive direction between Air Attack, lead plane pilot, assigned aircraft, and ground operations • If confusion or conflicting priorities develop, STOP operations, until they can be safely continued
ALL	X	Intruder Aircraft	<ul style="list-style-type: none"> • Designate TFR airspace over the incident air operations area • Report airspace conflicts or intrusion immediately to Air Support • Curtail air operations, as needed, until airspace is clear
ALL	X	Bucket Drops	<ul style="list-style-type: none"> • Ensure clear air-ground communications • Stay clear of flight zones and drop areas. • Watch out for rotor wash or air tanker turbulence and potentially erratic fire behavior • Keep heads up for snags and hazard trees
ALL	X X X	Air Support Dependnt	<ul style="list-style-type: none"> • Staff dedicated lookouts at pre-identified vantage points. • Staff aerial lookout. During major threatening activity, assess & provide direction • Do go/no go assessment for ground operations • Ensure that firefighter safety is not compromised
ALL	X	Air Operations	Use clear text communication and identify ground contact with pilot. Clear drop area of all personnel prior to drop. No personnel in zone during dipping or dropping operation. Watch for erratic winds along ridges. Stay heads up with helicopter operations and crew shuttles. Pay attention to helitack personnel. Stay buckled up until released by helitack.
ALL	X	Spotting, Torching	<ul style="list-style-type: none"> • Watch for smoldering fires picking up over large areas, trees crowning out inside of fireline, high sustained rate of spread, well-developed convection column, hot/dry. • Patrol for spots especially after torching. • Post lookouts
ALL	X	Dehydration Heat Stress	<ul style="list-style-type: none"> • Drink plenty of fluids (1 qt/hr); ensure adequate replacement water supplies • Pace work; allow frequent periods of rest in shade, if possible • Monitor fitness of crews for assignments • Limit shift lengths
ALL	X	Snags	<ul style="list-style-type: none"> • Stay alert for strong winds, fire damaged trees, air operations turbulence, vibrations from heavy equipment, , rot or shallow-rooted trees • Scout, identify and flag hazards, fell dangerous trees near the line • Do go/no go assessment prior to falling • Post lookouts, assess trees in work areas, issue daily warnings
ALL	X	Road Hazards	SLOW DOWN, do not over-drive dirt roads, turn on headlights, wear seatbelts, maintain spacing, check brakes, clean windshield, watch backing and use a spotter when available. Use caution on one-way access roads.

INCIDENT RADIO COMMUNICATIONS PLAN		1. Incident Name		2. Date/ Time Prepared		3. Operational Period Date/Time	
		Impassable Bay Fire		06-21-2011 2030		06-22-2011 0730 - 2200	
4. Basic Radio Channel Utilization							
Radio Type/Cache	Channel	Function	Frequency/Tone		Mode	Assignment	Remarks
King NIFC	1	Tac1	RX 168.0500 TX 168.0500	Tone 136.5 Tone 136.5	Narrow	DIV A	Post Human Repeaters where Needed
King NIFC	2	Tac2	RX 168.2000 TX 168.2000	Tone 136.5 Tone 136.5	Narrow	DIV C	Post Human Repeaters where Needed
King NIFC	3	Tac3	RX 168.6000 TX 168.6000	Tone 136.5 Tone 136.5	Narrow	DIV E	Post Human Repeaters where Needed
King NIFC	4	Tac 4	RX 166.7250 TX 166.7250	Tone 136.5 Tone 136.5	Narrow	DIV Y	Post Human Repeaters where Needed
King NIFC	5	Tac 5	RX 166.7750 TX 166.7750	Tone 136.5 Tone 136.5	Narrow	DIV Z	Post Human Repeaters where Needed
King NIFC	6	CMD	RX 173.0375 TX 167.3250	Tone None Tone 136.5	Narrow	COMMAND South	
King NIFC	7	CMD	RX 166.6125 TX 168.4000	Tone 136.5	Narrow	COMMAND North	
King R 8	8	R 8 - Fire	RX 169.9000 TX 169.9000	Tone None	Narrow	Local IA	Post Human Repeaters where Needed
King DOF 190	9	DOF 190	RX 151.2725 TX 151.2725	Tone None Tone None	Narrow	Primary IA for off Forest	Post Human Repeaters where Needed
King DOF 191	10	DOF 191	RX 151.2875 TX 151.2875	Tone None Tone None	Narrow	Local IA	Post Human Repeaters where needed
King NIFC	11	FOREST	RX 171.5500 TX 172.3750	Tone 167.9	Narrow	Olustee Forest Repeater	Forest Dispatch
King NIFC	12	FOREST	RX 171.5500 TX 172.3750	Tone 146.2	Narrow	Eddy Forest Repeater	Forest Dispatch
King NIFC	13	A/G 1	RX 166.6375 TX 166.6375		Narrow	Air to Ground Primary	AIR to Ground Primary Div Y & Z
King NIFC	14	A/G 2	RX 168.1250 TX 168.1250		Narrow	Air to Ground Secondary	Air to Ground Secondary A - C - E - IA
King NIFC	15	White	RX 154.2800 TX 154.2800	Tone None Tone None	Narrow	Local IA	
King NIFC	16	Air Guard	RX 168.6250 TX 168.6250	Tone 110.9	Narrow	Air Guard	Emergency Use Only Tone 110.9

5. Prepared by (Communications Unit) Walter Warrick COML

MEDICAL PLAN	1. Incident Name	2. Date Prepared	3. Time Prepared	4. Operational Period
	Impassable Bay Fire	6/21/2011	2000	6/22/2011

5. Incident Medical Aid Station

Medical Aid Stations	Location	Paramedics	
		Yes	No
ICP	OLUSTEE, FLORIDA	X	

6. Transportation

A. Ambulance Services

Name	Address	Phone	Paramedics	
			Yes	No
BAKER COUNTY EMS	MACCLENNY	904-259-2861	X	
COLUMBIA CO. EMS	LAKE CITY	904-758-9111	X	

B. Incident Ambulances

Name	Location	Paramedics	
		Yes	No

7. Hospitals

Name	Address	Travel Time		Phone	Helipad		Burn Center	
		Air	Grnd		Yes	No	Yes	No
LAKE SHORE	LAKE CITY	15 MIN	20 MIN.	386-292-8001	X			X
URGENT CARE	LAKE CITY	15 MIN	20M IN	386-758-2944		X		X
ED FRASER MEM.	MACCLENNY	15 MIN	20 MIN	904-259-3151	X			X
UNIV.MED. JACKSONVILLE	JACKSONVILLE	20 MIN	45 MIN.	904-549-4165	X			X
SHANDS HOSPITAL	GAINESVILLE FL	30 MIN	1 HRS	352-494-5616	X		X	
LIFE FLIGHT	JACKSONVILLE	30 MIN		904-202-2136	X			

8. Medical Emergency Procedures

Upon occurrence of a "MAJOR" medical or accident involving significant injury on the fireline. The **nearest fireline Supervisor or Leader** on the scene will be in charge and will clear all radio traffic on the incident "Command" Channel. The command channel will be used to coordinate response – do not use names.

- o Obtain and facilitate nearest EMT's to the scene, request medical unit response – DIVS in charge of scene.
- o Coordinate and facilitate appropriate transportation for injured with Medical Unit – EMT in charge of patient(s).
- o Nature of problem: # injured; Condition and Vitals; Location (GPS Coordinates)
- o Remove all unnecessary personnel from the accident scene – notify SOFR.
- o Secure the scene area and identify witnesses for later investigation – keep a log.
- o Use emergency form on back of medical plan to report to communications.

Life safety is the Number 1 Priority on this Incident

9. Prepared by (Medical Unit Leader) DEB LOPEZ MATT PAYNE(T)	10. Reviewed by (Safety Officer) STEVE DAVIS
---	--

COMMUNICATION FOR INJURY/MEDICAL EMERGENCY

Do not use the name of the Injured individual over the radio. In the event of a minor injury, so state when relaying the information so a false sense of urgency is not. The Medical Unit Leader is to be notified in all injury situations.

Date: _____ Time: _____ Division _____

Location: _____

On Scene Point of Contact (Name & Position): _____ Radio Frequency _____

Medical personnel on site (name) _____

Type of Injury: _____

Sex _____ Age _____

Medical Injury _____ or Illness _____ Life Threatening Yes _____ No _____

Patient Condition- Critical _____ Serious _____ Minor _____ Conscious Yes _____ No _____

Additional medical equipment or personnel needed? (Type and Quantity) _____

Is air transportation needed: Yes _____ No _____ Can Patient sit up Yes _____ No _____ Weight _____

Location LAT _____ LONG _____ Drop Point _____

Patient Home Unit _____ Agency _____

Assessment BP _____ Pulse _____ Level of Consciousness _____ Skin _____

Difficulty Breathing Yes _____ No _____

On going Assessment- Document as they occur – on Scene personnel,

Accident Incident within an Incident

The **Incident Commander** is responsible for overall action in case of a serious accident.

Upon occurrence of a “**MAJOR**” accident involving significant injury or fatality on the fireline, the highest qualified person on scene shall take control of the situation until the nearest **Division Supervisor** arrives on scene to assume control. Immediate and clear communication must be established between Operations and Division/Group Supervisors to determine who can arrive at the scene quickest and gain control of the situation. In the event of such an accident in camp or on incident roads on-site personnel shall take control until an **Operations Chief or Division Supervisor** arrive or **Local Law Enforcement** and or **Medical personnel** have assumed control.

The **Incident Dispatcher or Responsible Operations Individual** in charge of the accident will take immediate action to clear all radio traffic on the incident “Command Channel” by broadcasting **"Emergency Traffic Only"**, so that quick and proper coordination for handling the accident can take place.

Upon arrival at the accident scene, whoever has been designated to manage the situation (Ops or DIVS) should take immediate actions to:

- Obtain and facilitate EMT's to the scene – notify them you are in charge.
- Co-ordinate and facilitate appropriate transportation for injured.
- Move all unnecessary personnel from the accident scene.
- Secure the scene area and identify witnesses for investigation.

The **Safety Officer** will respond immediately to the scene of the accident to assist the Operations Chief or Division/Group Supervisor and shall be responsible for initiating the proper investigation and documentation by qualified personnel.

Immediately upon notification of an accident requiring emergency action the **Medical Unit Leader and Incident Commander** shall respond to incident communications.

Plans Chief, Logistics Chief, Finance Chief and **Information Officer** shall be notified and respond to incident communications in an appropriate manner that will not significantly affect ongoing operations.

The **Logistics Chief** shall attempt to control external communication, phones and radio. All information released from the incident shall be through the incident Information Officer with the approval of the Incident Commander.

The **Plans Chief** will make contact with the Agency Administrator who will in turn contact appropriate officials of the agency. If the accident involves a fatality, the Agency Administrator will contact the Sheriff's Office, the Coroner's Office, and the employing agency of the victim and will find out who will contact family members. The Plans Chief

will assure that an individual is assigned to document all communications regarding the accident.

At no time during the accident/fatality evacuation process will the name of the victim(s) be used.

The need of a *Critical Incident Stress Debriefing* for incident personnel will be discussed by the Core Team with input from the Medical Unit Leader, the Human Resource Specialist, and local / involved individuals. The Incident Commander will approve such debriefings.

Approved by:

Incident Commander

Date

KIDD'S Incident Management Team Cell Phone List

<i>Position</i>	<i>Name</i>	<i>Cell</i>
Command & General:		
ICT2	John Kidd	208-869-5979
ICDP	Tom Suwyn	435-864-7064
SOFR	Steve Davis	208-313-7835
SOF2	Ken Moore	435-313-2248
PIO2	Kirsten Cannon	702-595-2034
PIO2	Dick Birger	651-769-5952
OSC2	Tracy Swenson	435-553-5926
AOBD	Jill McCurdy	208-387-5737
OSC2	Colt Mortenson	970-756-4831
LSC2	Brent Crosland	435-979-3615
FSC2	Mike Taylor	435-592-0006
PSC2	Evan Boshell	435-691-9331
Operations:		
DIVS	Jason Kirks	435-554-0287
DIVS	Clint Coates	435-691-7272
DIVS	Brian Keating	435-259-9691
DIVS	Daren Turner	
ASGS	Chris Gamble	435-790-7095
ATGS	Dave McCormick	509-449-0804
HEB1	Don Nicolas	218-360-1816
ABRO	Darold Williams	386-752-0600
ATB MGR	Darrell Bohanon	386-758-9078
ATGS	Mike Melton	435-590-4712
Planning:		
RESL	Clark Tucker	435-823-6044
SITL	Lou Ballard	208-859-8359
GIST	Sarah Peterson	208-830-3104
FBAN	Chris Church	208-921-8656
DMOB	Linda Chappell	435-979-8356
READ	Carl Petrick	850-524-1233
CTSP	Heidi Little	801-618-5240
Logistics:		
COMT	Walter Warrick	435-979-7176
SPUL	Nan Coates	435-691-1218
FACL	Duane Stewart	435-616-8750
GSUL	Varian Allen	435-749-7164
EPQM	Art Partridge	435-979-4322
FUDL	Shannon Swann	702-271-6765
BCMG	Sean Stewart	435-616-2580
SECM	Randy Davis	435-691-3226
MEDL	Deb Lopez	435-406-1210
Finance:		
TIME	Stacy Heaps	435-287-7013
COST	Wendy Soper	435-590-4728
Trainees		
ICT2	Tracy Dunford	801-558-6508
AOBD	Kevin Greenhalgh	435-691-3771
DIVS	Tyko Isaacson	
DIVS	Bryan Brazzeal	435-680-3625
MEDL	Matt Payne	435-770-3391
OSC2	Brook Chadwick	801-541-6173

RESTAURANTS

Texas Roadhouse: 386-758-0074

Porterhouse Grill: 386-754-5907

Cracker Barrel: 386-755-5638 (Breakfast)

Applebee's: 386-752-7087

Blue Roof Grill: 386-719-2424

Pizza Hut: 386-752-3896

I-HOP : (Breakfast and Dinner)

Rates:

Breakfast = \$7.00

Lunch = \$11.00

Dinner = \$23.00

Tips will be paid by Government.

RESTAURANTS

Texas Roadhouse: 386-758-0074

Porterhouse Grill: 386-754-5907

Cracker Barrel: 386-755-5638 (Breakfast)

Applebee's: 386-752-7087

Blue Roof Grill: 386-719-2424

Pizza Hut: 386-752-3896

I-HOP : (Breakfast and Dinner)

Rates:

Breakfast = \$7.00

Lunch = \$11.00

Dinner = \$23.00

Tips will be paid by Government.

KIDD'S MANAGEMENT TEAM SUPPLY ORDER

Date & Time Order was Placed	Order # (DIVS + #)	Location & Time for Delivery (Division/LZ/DP/Lat Long)	Mode of delivery (Driven/Helo/DIVS to Pick up)	
Order received in Communications by (name):			Time:	
Order received in Supply by (name):			Time:	
Order received in Transportation by (name):			Time:	
Order received in Helibase by (name):			Time:	
Order shipped to line unit by (name): (Send this sheet to the line with the order)			Time:	
#	Item	Amount	Item	Amount
1.	Meals Breakfasts		26. Swivel	ea.
2.	Meals Lunches		27. Leadline	ea.
3.	Meals Dinners		28. Backpack Pump	ea.
4.	Meals MRE's/case		29. Slingable Blivet	ea.
5.	Water 5 gal. cubies		30. Folding Tank	Size/ea.
6.	Gatorade Case		31. Pumpkin	Size/ea.
7.	Batteries AA 1-Flat		32. Hose	1 ^{1/2} " / ft.
8.	Batteries Specify Type		33. Hose	1" / ft.
9.	Flagging (Specify type) # Roll		34. Hose	3/4" / ft.
10.	Sleeping Bags	ea	35. Reducer	1 ^{1/2} "X1"
11.	Tarps/Plastic	ea./roll	36. Reducer	1"X 3/4"
12.	Parachute Cord	roll	37. Gated "Y"	1 ^{1/2} "
13.	Garbage Bags	Box	38. Gated "Y"	1"
14.	20 Man First Aid Kit	ea.	39. Gated "Y"	3/4"
15.	Coffee Kit w/propane	ea.	40. Shut-off Valve	3/4"
16.	Gas	Raw	41. In-line Tee	1 ^{1/2} "X1"
17.	Bar Oil	Gal.	42. Nozzle	1 ^{1/2} "
18.	2- cycle oil	QT's	43. Nozzle	1"
19.	Tool	Shovel ea.	44. Nozzle	3/4"
20.	Tool	Pulaski ea.	45. Chainsaw Kit	ea.
21.	Tool	Combi ea.	46. Mark 3 Pump Kit-Cache w/10 gal raw gas and 2 qts 2 cycle oil	ea.
22.	Tool	Specify Type ea.		
23.	Fussee	Case	47. Lightweight Pump Kit-Cache w/5 gal raw gas and 1 qt 2 cycle oil	ea.
24.	Drip Torches	Full ea.		
25.	Drip Torch Mix	5 Gal.	48. Division Hose Lay Kit	ea.

GPS Datum: NAD 83

Team Ordering/ Timeline Process:

0630 – Morning Briefing, start of crew time.

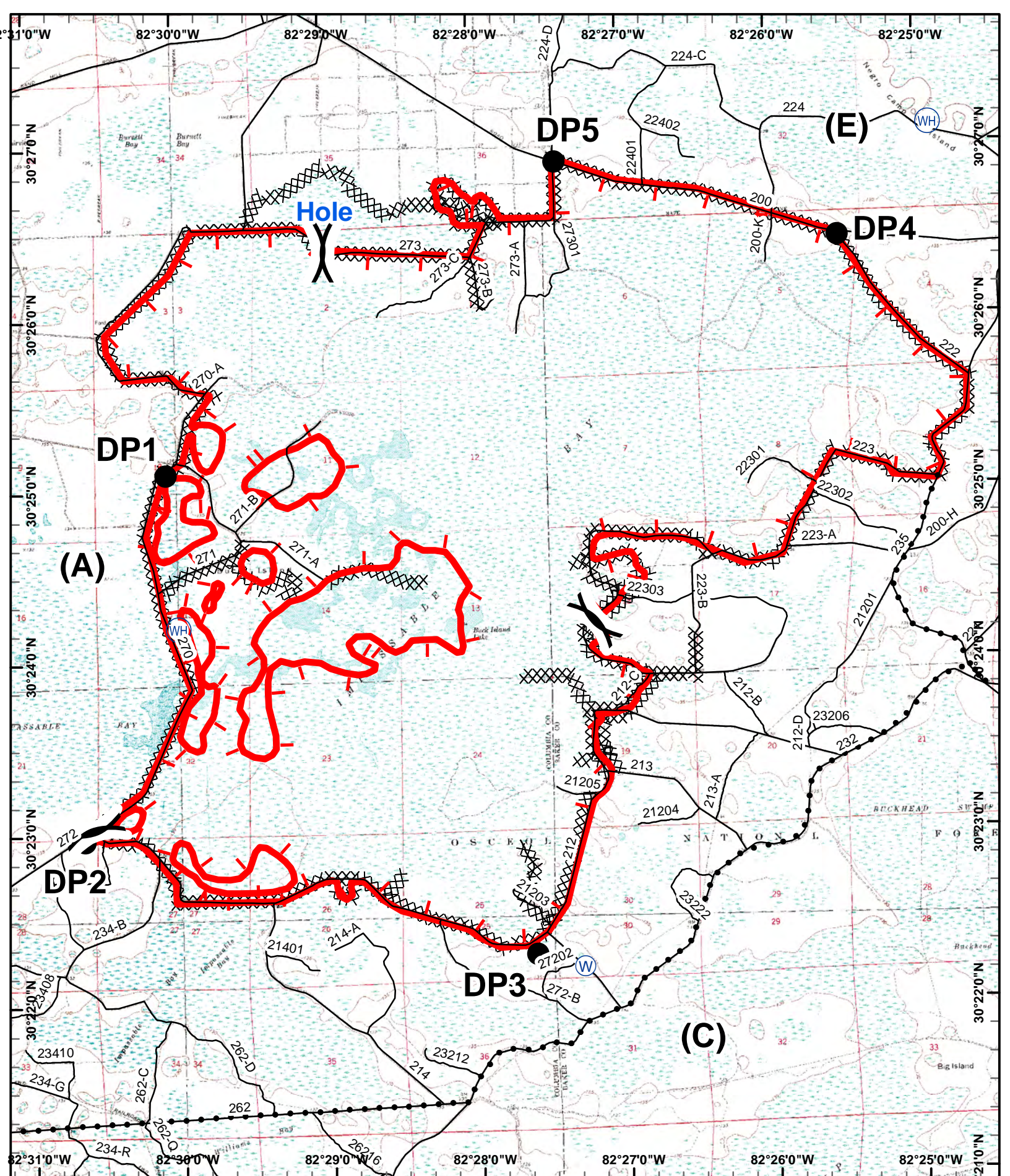
1100 – Last call to change spike camp resource (food, fuel, etc) location.








1500 – DIVS to have next day’s resource order ready for OPS.

- All crew level orders will be placed through DIVS.
- DIVS will place all orders through Communications Unit.
- All orders will be tracked using the process found on the front of form.

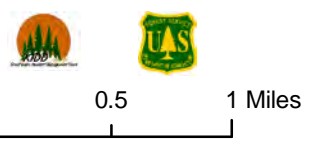
Division Hose Lay Kit Components

Item	NFES#	Quantity			
Hose 1½”	1239	1000’			
Hose 1”	1238	1000’			
Hose, ¾”	1016	500’			
Tee, 1 ½” – 1”	0731	5			
Nozzle, 1 ½”	0137	2			
Nozzle, 1”	0138	6			
Nozzle, ¾”	0136	12			
1 ½” Gated “Y”	0231	5			
1” Gated “Y”	2059	5			
¾” Gated “Y”	0272	6			
Shut off valve ¾”	0738	4			
Reducers, 1 ½” – 1”	0010	5			
Reducers, 1” – ¾”	0733	5			
Double Female 1”	0710	1			
Double Female 1 ½”	0857	1			

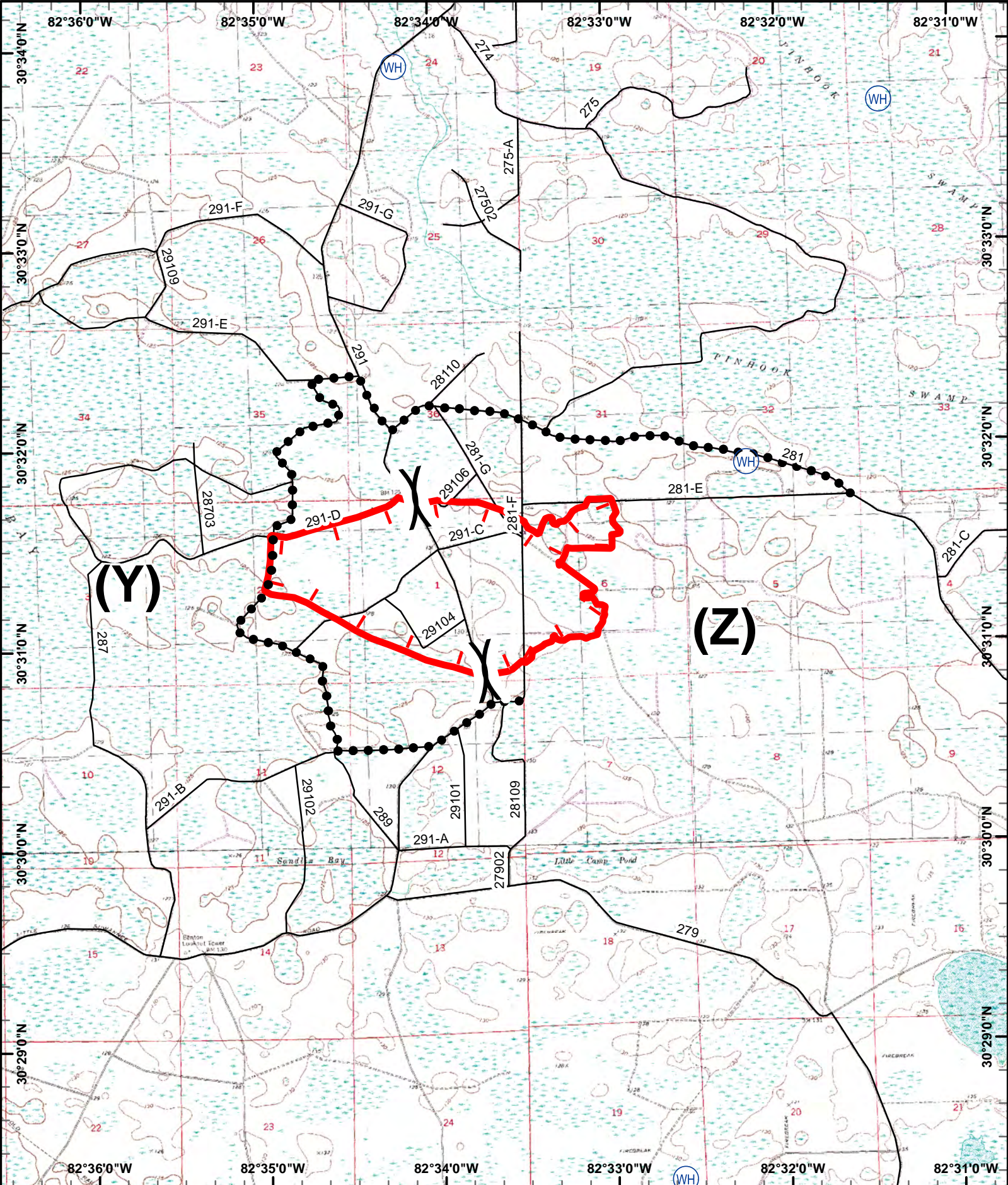


-  Division
-  Drop Point
-  Water Source
-  Helispot & Dipsite
-  Active Fire Perimeter
-  Contingency Line
-  Dozer Line and Improved Line

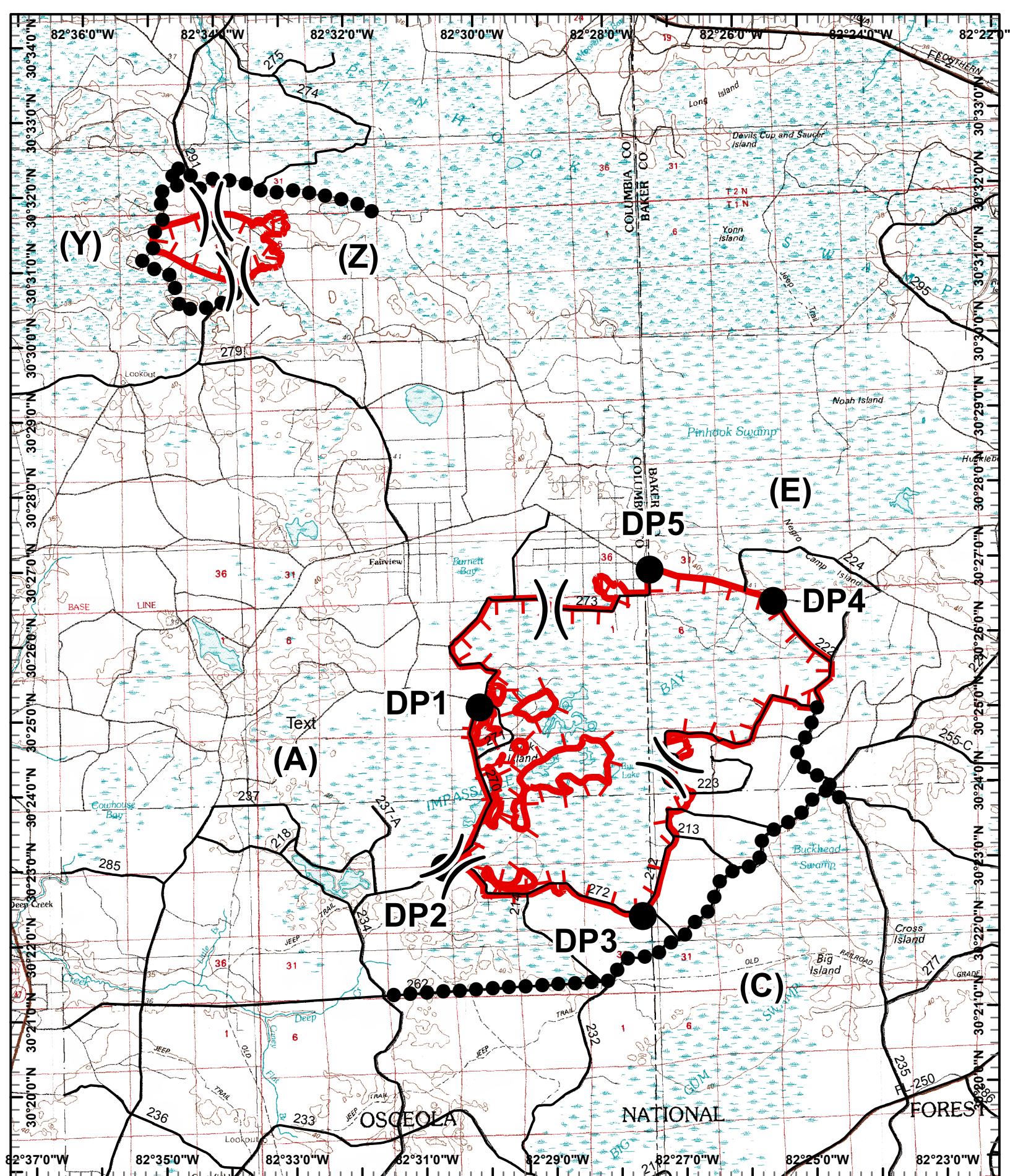
Created June 19, 2011 1830
s.peterson



Impassable Bay Fire
June 22, 2011
FL-FNF-011023
 11,305 Acres

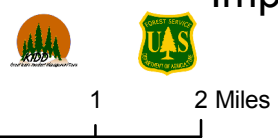


	Division		Helispot & Dipsite	Created June 21, 2011 1930 s.peterson		 N
	Drop Point		Active Fire Perimeter			
	Water Source		Contingency Lines			Kelly Rd Fire June 22, 2011 FL-FNF-004131 830 Acres
	Dozer Line and Improved Line					



- Division
- Water Source
- Helispot & Dipsite
- Active Fire Perimeter
- Drop Point
- Contingency Lines
- Dozer Line and Improved Line

Created June 22, 2011 1930
s.peterson



Impassable & Kelly Road Fires
 June 22, 2011
 FL-FNF-004131
 11,305 Acres / 830 Acres

