

IMPASSABLE BAY FIRE



THURSDAY, JUNE 23, 2011

0700-2100

P8F4N2
(0805)

GPS: NAD 83 - FORMAT : DD MM. MM

INCIDENT OBJECTIVES	1. Incident Name	2. Date Prepared	3. Time Prepared
	Impassable Bay Fire	6/22/2011	2000
4. Operational Period 6/23/2011 0700-1900			
5. General Control Objectives For The Incident (Include Alternatives)			
<ol style="list-style-type: none"> 1. Provide for the safety of all incident personnel and the public, by adhering to all established guidelines and protocols. 2. Keep fire within the Impassable Bay swamp by using Forest Service Roads 270, 200, 222, 235, 232, 212 and 272, and contain the Kelly Road Fire south of 281 road, east of 287, north of Suwannee road and minimize growth on private land. 3. Manage the fire in a manner that is safe and cost effective for the values at risk. 4. Maintain a positive working relationship with our State and Federal partners and adjacent landowners by initiating and maintaining timely communications. Work closely with designated landowner (GOAL) representatives and adjacent county/state agencies to ensure that fire suppression and incident on respective lands are fully coordinated. 5. Together with the Florida Division of Forestry (DOF), coordinate fire management activities to maximize efficient use of wildland and structural resources on private and public lands including urban interface structures, timber, and sensitive habitats. Develop structure protection plans where necessary and minimize the impact to the private timber industry. 6. Provide initial attack resources as directed in the Delegation of Authority. 7. Prepare and implement a Rehabilitation Plan for current and future fires. 8. Minimize adverse effects to Cultural Resources through minimally ground disturbing suppression tactics, recording and flagging sites and avoid if possible. Report unauthorized digging or collection of sites. Record location of dozer lines and/or mechanically improved roads for rehabilitation needs. 			
6. Weather Forecast For Period			
See attached weather			
7. General Safety Message			
Drive defensively and with headlights on. Drink plenty of water and take frequent rest breaks. Ensure LCES is in place and known by all personnel.			
8. ATTACHEMENTS (X IF ATTACHED)			
<input checked="" type="checkbox"/> Organization List - ICS 203 <input checked="" type="checkbox"/> Medical Plan - ICS 206 <input checked="" type="checkbox"/> Air Ops Summary _____ <input checked="" type="checkbox"/> Division Assignment Lists - ICS 204 <input checked="" type="checkbox"/> Incident Map <input checked="" type="checkbox"/> Fire weather forecast _____ <input checked="" type="checkbox"/> Communications Plan - ICS 205 <input checked="" type="checkbox"/> Traffic Plan <input checked="" type="checkbox"/> Fire Behavior forecast _____			
9. Prepared By (Planning Section Chief)		10. Approved By (Incident Commander)	
EVAN BOSHELL		JOHN KIDD	

ORGANIZATION ASSIGNMENT LIST	
1. Incident Name IMPASSABLE BAY FIRE	
2. Date Prepared June 23, 2011	3. Time 2000
4. Operational Period DAY SHIFT JUNE 23, 2011 0700-2100	
Position	Name
5. Incident Commander	
Incident Commanders	John Kidd
Deputy Incident Commander	Tom Suwyn
Incident Commander (T)	Tracy Dunford
Safety Officers	Steve Davis/Ken Moore
Information Officer	Dick Birger Kirsten Cannon
6. Agency Representative	
Agency	Name
FS – Forest Supervisor	Susan Jeheber-Matthews
FS – Agency Admin. Rep.	Ivan Green – DFR
FS – Agency Admin. Rep.	Ron Smith
Resource Advisor - FS	Carl Petrick
Florida DOF	Barry Coulliette
7. Planning Section	
Chief	Evan Boshell
Resources Unit	Clark Tucker
Resources Unit	Renee Flanagan
Documentation Unit	Clark Tucker
Demob Unit	Linda Chappell
Situation Unit	Lou Ballard
FBAN	Chris Church
IMET	
GIS Specialist	Sarah Peterson
Training Specialist	
Computer Specialist	Heidi Little
Status/Check-in	
8. Logistics Section	
Chief	Brent Crosland
LSC2(T)	Varian Allen
Supply Unit	Nan Coates
Facilities Unit	Duane Stewart
Ground Support Unit	Art Partridge
Communications Unit	Walter Warrick
Medical Unit	Deb Lopez
Ordering Mgr	Randy Davis
Food Unit	Shannon Swann
9. Operations Section	
Field Operations	Colt Mortenson Brook Chadwick (T)
Planning Operations	Tracy Swenson
a. Branch I	
Branch Director	
Division/Group	IA Mike Strange
Division/Group	CONTINGENCY Brian Keating Bryan Brazzeal
Division/Group	A/B/C/D Jason Kirks
Division/Group	E/F Jacob Gipson
Division/Group	Y-Kelly Clint Coates Tyko Isaacson
Division/Group	Z-Kelly Daren Turner
Division/Group	
b. Branch II	
Branch Director	
Division/Group	
c. Branch III	
Branch Director	
Division/Group	
d. Air Operations Branch	
Air Operations Branch Director	Jill McCurdy
AOBD(T)	Kevin Greenhalgh
ABRO	Darold Williams
Air Tactical Group Supervisor	Mike Melton
Air Tactical Group Supervisor	Dave McCormick
Air Support Group Supervisor	Chris Gamble
Helibase Manager T-1	Don Nicholas
HEB2(T)	Fred Alldridge
ATB Mgr.	Darrell Bohanon
10. Finance Section	
Chief	Mike Taylor
Time Unit	Stacey Heaps
Cost Unit	Wendy Soper
Compensation/Claims Unit	
Procurement Unit Leader	
Prepared by Resource Unit Leader	
CLARK TUCKER	

Division Assignment List		1. Branch		2. Division/Group IA			
3. Incident Name IMPASSABLE BAY		4. Operational Period 06/23/11 Thursday Day Shift 0700 - 2100					
5. Operations Personnel							
Operations Chief	COLT MORTENSON	Division/Group Supervisor	MIKE STRANGE				
Operations Chief	TRACY SWENSON	Air Attack Supervisor	MICHAEL A MELTON				
Operations Chief(T)	BROOK CHADWICK	Safety Officer					
6. Resources Assigned this Period							
Strike Team/Task Force/ Resource Designator	Leader	Num of Pers.	Trans. Y/N	Drop Off PT./Time	Pick Up PT./Time		
ICT4	STRANGE	1	N	OFFICE/0900	STATION/2200		
ICT4	KETT	1	N	OFFICE/0900	STATION/2200		
ENG 462	BELL	2	N	OFFICE/0900	STATION/2200		
ENG FS E-18		3	N	OFFICE/0900	STATION/2200		
TPL WILDLANDS 1	ROBERTS	2	N	OFFICE/0900	STATION/2200		
DOZER A2		1	N	OFFICE/0900	STATION/2200		
DOZER 2		1	N	OFFICE/0900	STATION/2200		
DOZER 57		1	N	OFFICE/0900	STATION/2200		
DOZER 59		1	N	OFFICE/0900	STATION/2200		
7. Control Operations PATROL ALL FIRES OTHER THAN IMPASSABLE BAY AND KELLY. BE READY FOR IA ASSIGNMENTS.							
8. Special Instructions INSURE LCES IS IN PLACE DRIVE DEFENSIVELY WITH LIGHTS ON AT ALL TIMES.							
9. Division/Group Communications Summary							
Function	Frequency - RX	Frequency - TX	Tone	System	Channel	System	Channel
Command	173.0375	167.3250	136.5	NIFC	6		
Tactical Div/Group							
Logistics							
Air to Ground	168.1250	168.1250		NIFC	14		
Prepared by (Resource Unit Leader) CLARK TUCKER		Approved by (Planning Section Chief) EVAN BOSHELL			Date Prepared 06/22/11		Time Prepared 1020

Division Assignment List	1. Branch	2. Division/Group CONTINGENCY
---------------------------------	-----------	---

3. Incident Name IMPASSABLE BAY	4. Operational Period 06/23/11 Thursday Day Shift 0700 - 2100
------------------------------------	--

5. Operations Personnel

Operations Chief	COLT MORTENSON	Division/Group Supervisor	BRIAN KEATING
Operations Chief	TRACY SWENSON	Air Attack Supervisor	MICHAEL A MELTON
Operations Chief(T)	BROOK CHADWICK	Safety Officer	

6. Resources Assigned this Period

Strike Team/Task Force/ Resource Designator	Leader	Num of Pers.	Trans. Y/N	Drop Off PT./Time	Pick Up PT./Time
DIVS(T)	BRAZZEAL	1	N	FIRE/0700	STATION/2100
F350 & TRAILER - ROT	WOVELL	1	N	FIRE/0700	STATION/2100
EXCAVATOR - ROT	CHAVARRIA	1	N	FIRE/0700	STATION/2100
EXCAVATOR W/ FECON - ROT	TRAVIS	1	N	FIRE/0700	STATION/2100
GRADER - ROT	HARVEY	1	N	FIRE/0700	STATION/2100
DUMP TRUCK - ROT	FARRIS	1	N	FIRE/0700	STATION/2100
LOWBOY & TRANS - ROT	PARRISH	1	N	FIRE/0700	STATION/2100
DOZER - ROT	WORRELL	1	N	FIRE/0700	STATION/2100

7. Control Operations
CONTINUE PREP WORK ON ROAD SYSTEM.
COORDINATE WITH COOPERATORS

8. Special Instructions
INSURE LCES IS IN PLACE.
DRIVE DEFENSIVELY WITH LIGHT ON AT ALL TIMES.

9. Division/Group Communications Summary

Function	Frequency - RX	Frequency - TX	Tone	System	Channel	System	Channel
Command	173.0375	167.3250	136.5	NIFC	6		
Tactical Div/Group	168.0500	168.0500	136.5	NIFC	1		
Logistics							
Air to Ground	168.1250	168.1250		NIFC	14		

Prepared by (Resource Unit Leader) CLARK TUCKER	Approved by (Planning Section Chief) EVAN BOSHELL	Date Prepared 06/22/11	Time Prepared 1020
---	---	---------------------------	-----------------------

Division Assignment List		1. Branch			2. Division/Group A/B/C/D		
3. Incident Name IMPASSABLE BAY		4. Operational Period 06/23/11 Thursday Day Shift 0700 - 2100					
5. Operations Personnel							
Operations Chief	COLT MORTENSON			Division/Group Supervisor		JASON KIRKS	
Operations Chief	TRACY SWENSON			Air Attack Supervisor		MICHAEL A MELTON	
Operations Chief(T)	BROOK CHADWICK			Safety Officer		ROBERT E BRITAIN	
6. Resources Assigned this Period							
Strike Team/Task Force/ Resource Designator	Leader		Num of Pers.	Trans. Y/N	Drop Off PT./Time		Pick Up PT./Time
EMT	MEREDITH LUND		1	N	ICP/0700		STATION/2100
ENG 632	COOK		3	N	ICP/0700		STATION/2100
ENG MAINE 15	HATCH (6/23)		3	N	ICP/0700		STATION/2100
ENG MAINE 18	COUSINS (6/23)		3	N	ICP/0700		STATION/2100
ENG 2622	RINGER (6/30)		5	N	ICP/0700		STATION/2100
BURNS HELITACK			3	N	ICP/0700		STATION/2100
7. Control Operations							
PATROL AND MOPUP AS NEEDED.							
8. Special Instructions							
INSURE LCES IS IN PLACE. DRIVE DEFENSIVELY WITH LIGHTS ON AT ALL TIMES. DO NOT DRIVE IN DIVISION D UNLESS OPERATIONS CRITICAL.							
9. Division/Group Communications Summary							
Function	Frequency - RX	Frequency - TX	Tone	System	Channel	System	Channel
Command	173.0375	167.3250	136.5	NIFC	6		
Tactical Div/Group	168.0500	168.0500	136.5	NIFC	1		
Logistics							
Air to Ground	168.1250	168.1250		NIFC	14		
Prepared by (Resource Unit Leader)		Approved by (Planning Section Chief)			Date Prepared		Time Prepared
CLARK TUCKER		EVAN BOSHELL			06/22/11		1020

Division Assignment List			1. Branch		2. Division/Group		
				CONTINGENCY			
3. Incident Name IMPASSABLE BAY			4. Operational Period 06/23/11 Thursday Day Shift 0700 - 2100				
5. Operations Personnel							
Operations Chief	COLT MORTENSON			Division/Group Supervisor	BRIAN KEATING		
Operations Chief	TRACY SWENSON			Air Attack Supervisor	MICHAEL A MELTON		
Operations Chief(T)	BROOK CHADWICK			Safety Officer			
6. Resources Assigned this Period							
Strike Team/Task Force/ Resource Designator	Leader	Num of Pers.	Trans. Y/N	Drop Off PT./Time	Pick Up PT./Time		
DIVS(T)	BRAZZEAL	1	N	FIRE/0700	STATION/2100		
F350 & TRAILER - ROT	WOVELL	1	N	FIRE/0700	STATION/2100		
EXCAVATOR - ROT	CHAVARRIA	1	N	FIRE/0700	STATION/2100		
EXCAVATOR W/ FECON - ROT	TRAVIS	1	N	FIRE/0700	STATION/2100		
GRADER - ROT	HARVEY	1	N	FIRE/0700	STATION/2100		
DUMP TRUCK - ROT	FARRIS	1	N	FIRE/0700	STATION/2100		
LOWBOY & TRANS - ROT	PARRISH	1	N	FIRE/0700	STATION/2100		
DOZER - ROT	WORRELL	1	N	FIRE/0700	STATION/2100		
7. Control Operations CONTINUE PREP WORK ON ROAD SYSTEM. COORDINATE WITH COOPERATORS							
8. Special Instructions INSURE LCES IS IN PLACE. DRIVE DEFENSIVELY WITH LIGHT ON AT ALL TIMES.							
9. Division/Group Communications Summary							
Function	Frequency - RX	Frequency - TX	Tone	System	Channel	System	Channel
Command	173.0375	167.3250	136.5	NIFC	6		
Tactical Div/Group	168.0500	168.0500	136.5	NIFC	1		
Logistics							
Air to Ground	168.1250	168.1250		NIFC	14		
Prepared by (Resource Unit Leader)			Approved by (Planning Section Chief)		Date Prepared	Time Prepared	
CLARK TUCKER			EVAN BOSHELL		06/22/11	1020	

Division Assignment List		1. Branch		2. Division/Group Y - KELLY			
3. Incident Name IMPASSABLE BAY		4. Operational Period 06/23/11 Thursday Day Shift 0700 - 2100					
5. Operations Personnel							
Operations Chief	COLT MORTENSON	Division/Group Supervisor	CLINT C COATES				
Operations Chief	TRACY SWENSON	Air Attack Supervisor	MICHAEL A MELTON				
Operations Chief(T)	BROOK CHADWICK	Safety Officer	LYLE G KLENSKI				
6. Resources Assigned this Period							
Strike Team/Task Force/ Resource Designator	Leader	Num of Pers.	Trans. Y/N	Drop Off PT./Time	Pick Up PT./Time		
TFLD	KOSCHAK	1	N	ICP/0700	STATION/2100		
DIVS(t)	ISAACSON	1	N	ICP/0700	STATION/2100		
EMT	SCOTT PANNELL	1	N	ICP/0700	STATION/2100		
ENG 461	MUNSON	2	N	ICP/0700	STATION/2100		
ENG E-17	CORNETT	3	N	ICP/0700	STATION/2100		
ENG E-18 (BRUSH 74)	ODEN	3	N	ICP/0700	STATION/2100		
KRASSEL HELITACK	MOAN	5	N	ICP/0700	STATION/2100		
W/T 20	BURNSD	1	N	ICP/0700	STATION/2100		
7. Control Operations IMPROVE LINES AND MOPUP							
8. Special Instructions INSURE LCES IS IN PLACE. DRIVE DEFENSIVELY WITH LIGHTS ON AT ALL TIMES.							
9. Division/Group Communications Summary							
Function	Frequency - RX	Frequency - TX	Tone	System	Channel	System	Channel
Command	173.0375	167.3250	136.5	NIFC	6		
Tactical Div/Group	166.7250	166.7250	136.5	NIFC	4		
Logistics							
Air to Ground	166.6375	166.6375		NIFC	13		
Prepared by (Resource Unit Leader) CLARK TUCKER		Approved by (Planning Section Chief) EVAN BOSHELL			Date Prepared 06/22/11		Time Prepared 1020

Division Assignment List		1. Branch		2. Division/Group Z - KELLY			
3. Incident Name IMPASSABLE BAY		4. Operational Period 06/23/11 Thursday Day Shift 0700 - 2100					
5. Operations Personnel							
Operations Chief	COLT MORTENSON	Division/Group Supervisor		DAREN TURNER			
Operations Chief	TRACY SWENSON	Air Attack Supervisor		MICHAEL A MELTON			
Operations Chief (T)	BROOK CHADWICK	Safety Officer		LYLE G KLENSKI			
6. Resources Assigned this Period							
Strike Team/Task Force/ Resource Designator	Leader	Num of Pers.	Trans. Y/N	Drop Off PT./Time	Pick Up PT./Time		
EMT	SCOTT PANNELL	1	N	ICP/0700	STATION/2100		
TFLD(T)	HART	1	N	ICP/0700	STATION/2100		
ENG - WILDLAND WAREHOUSE	CIRONE	3	N	ICP/0700	STATION/2100		
ENG 35	ROBERTS	3	N	ICP/0700	STATION/2100		
ENG 612 (E2)		3	N	ICP/0700	STATION/2100		
ENG 705	WESON	3	N	ICP/0700	STATION/2100		
ENG RED ROCK 1	KRESNESS	2	N	ICP/0700	STATION/2100		
ENG RED ROCK 7	BENOY	3	N	ICP/0700	STATION/2100		
ENG BRUSH 2	TALBOT (6/30)	3	N	ICP/0700	STATION/2100		
DOZER 3	TIM	1	N	ICP/0700	STATION/2100		
W/T 10	SIMONS	1	N	ICP/0700	STATION/2100		
7. Control Operations IMPROVE LINES AND MOPUP							
8. Special Instructions INSURE LCES IS IN PLACE. DRIVE DEFENSIVELY WITH LIGHTS ON AT ALL TIMES							
9. Division/Group Communications Summary							
Function	Frequency - RX	Frequency - TX	Tone	System	Channel	System	Channel
Command	173.0375	167.3250	136.5	NIFC	6		
Tactical Div/Group	166.7750	166.7750	136.5	NIFC	5		
Logistics							
Air to Ground	166.6375	166.6375		NIFC	13		
Prepared by (Resource Unit Leader)		Approved by (Planning Section Chief)			Date Prepared 06/22/11		Time Prepared 1521

ICS 220 - Continued

10. TASK/ MISSION/ ASSIGNMENT (Type/ function includes: Air Tactical, Retardant, Recon, Personnel Transport, Bucket Operations, SAR, etc.)					
TYPE/FUNCTION	PRIORITY	NAME OF PERSONNEL OR CARGO (If applicable) or instructions for tactical aircraft	MISSION START	FLY FROM	FLY TO
Air Tactical		Coverage by ATGS as needed or requested by OPS.	0900	ATB	Fire
Retardant Drops		Requested by DIVS through ATGS and approved by OPS.	1000	ATB	Fire
Water Drops		Requested by DIVS through ATGS and approved by OPS.	0900	Helibase	Fire
Medical Transport		Crew Boss contact DIVS; DIVS contact ATGS for medical evacuations/transport.	As Requested	Helibase	Fire
Recon		As requested and approved by OPS.	As Requested	Helibase	Fire
Initial Attack		As directed by OPS.			

Helibase, Dip Sites, Pick Up Sites, etc.	Helispots, Sling Spots, Repeater Sites, etc.
Helibase 30° 11' 13" x 82° 34' 27"	

VI. Wind Restrictions.

The capability to fly a helicopter in excessive wind conditions varies considerably with the weight class of the helicopter and the degree of turbulence associated with the wind. If the helicopter flight manual or the helicopter operator's policy does not set lower limits, the following shall be used. These limits may be further restricted at the discretion of the Pilot or other air operations personnel. Limitations are as follows:

**FLIGHT ABOVE GROUND LEVEL
FLIGHT PERMITTED IN WINDS LESS THAN / MAXIMUM GUST SPREAD (in knots)**

Flights More Than 500' AGL		
Type 1 Helicopters	Type 2 Helicopters	Type 3 Helicopters
50 kts (43 mph) / Gusts: N/A	50 kts (43 mph) / Gusts: N/A	50 kts (43 mph) / Gusts: N/A
Flights Less Than 500" AGL		
Type 1 Helicopters	Type 2 Helicopters	Type 3 Helicopters
40 kts (35 mph) / 15 (13 mph) kts	40 kts (35 mph) / 15 (13 mph) kts	30 kts (26 mph)/15 kts (13 mph)

Approved by: /s/ Jill McCurdy, AOBD

FIRE WEATHER PLANNING FORECAST FOR NORTHEAST FLORIDA/SOUTHEAST GEORGIA
 NATIONAL WEATHER SERVICE JACKSONVILLE FL 236 PM EDT WED JUN 22 2011

.DISCUSSION...HIGH PRESSURE WILL CONTINUE ACROSS SOUTH FLORIDA WHILE WEAK TROUGHING LINGERS ACROSS THE SOUTHEAST REGION. A WARM WESTERLY FLOW WILL CONTINUE ACROSS THE FORECAST AREA...WITH INCREASED RAIN CHANCES THROUGH THE WEEKEND DUE TO THE TROUGH INTERACTING WITH SEA BREEZES. WINDS WILL REMAIN BELOW 15 MPH EXCEPT NEAR THUNDERSTORMS AND ALONG THE COAST IN THE AFTERNOON WITH THE SEA BREEZE. RELATIVE HUMIDITIES WILL BE ABOVE CRITICAL VALUES.

FLZ023-030-031-036-231000-
 BAKER-UNION-BRADFORD-ALACHUA-
 236 PM EDT WED JUN 22 2011

	TONIGHT	THU	THU NIGHT	FRI
CLOUD COVER	PCLDY	PCLDY	PCLDY	PCLDY
CHANCE PRECIP (%)	30	50	30	60
WEATHER TYPE	TSTMS	TSTMS	TSTMS	TSTMS
TEMP	72	94	71	91
RH (%)	100	45	100	51
20FT WND MPH (AM)		SW 5		SW 2
20FT WND MPH (PM)	SW 4	SW 7	SW 3	SW 6
PRECIP DURATION	1	2	1	4
PRECIP BEGIN	8 PM	8 AM	CONTINUING	8 AM
PRECIP END	2 AM	CONTINUING	2 AM	CONTINUING
PRECIP AMOUNT	0.03	0.18	0.09	0.23
LAL	3	3	3	4
MIXING HEIGHT(FT-AGL)	300	7800	200	4800
TRANSPORT WND (MPH)	S 6	SW 14	SW 5	W 13
DISPERSION INDEX	3	57	2	35
MAX LVORI	8		8	

.FORECAST FOR DAYS 3 THROUGH 7...

.SATURDAY...SHOWERS AND THUNDERSTORMS LIKELY. LOWS IN THE LOWER 70S. HIGHS IN THE LOWER 90S. NORTHWEST WINDS AROUND 5 MPH.

.SUNDAY...MOSTLY CLOUDY. A 50 PERCENT CHANCE OF SHOWERS AND THUNDERSTORMS. LOWS IN THE LOWER 70S. HIGHS IN THE LOWER 90S. SOUTH WINDS UP TO 5 MPH.

.MONDAY THROUGH WEDNESDAY...MOSTLY CLOUDY WITH A 40 PERCENT CHANCE OF SHOWERS AND THUNDERSTORMS. LOWS IN THE LOWER 70S. HIGHS IN THE LOWER 90S. SOUTHEAST WINDS UP TO 5 MPH.

FIRE BEHAVIOR FORECAST

FORECAST NUMBER: 5	TYPE OF FIRE: Wildland Fire
FIRE NAME: Impassable Bay - Kelly Road	OPERATIONAL PERIOD: 23 June 2011
DATE ISSUED: 22 June 2011	TIME ISSUED: 1930
UNIT: Osceola NF Olustee Ranger District	SIGNED: Chris Church – FBAN

INPUTS

WEATHER SUMMARY: . Synopsis...upper high continues over the immediate area with shortwave moving across the N Mississippi valley. Plume of moisture extends from Mexico and the E Pacific across the lower Mississippi valley and into New England between these 2 features. Satellite shows this plume edging E along the gulf coast. Models weaken upper ridge Thu and Fri as Great Lakes shortwave shifts east. Moisture plume is expected to shift SE and be situated over at least the NW 1/2 of the county warning area by Thu afternoon. This should push precipitation values to 50%+ thunderstorm coverage across the area. With increasing SW flow activity should make it across the area to the Atlantic coast...especially on Fri. Due to falling thicknesses and increased cloud cover and precip...Max temps will edge closer to normal thru the end of the week.

FUELS:

The KDBI for the fire area is above the 97th percentile and near records for seasonal average. The most recent ERC measured for this area shows the ERC approaching the 90th percentile. Fuels are a mixed southern rough element including slash pine and bald cypress with scattered longleaf pine. The understory consists of palmetto, gallberry, and mixed varieties of brush. Areas with timber contain a moderate dead and down component with higher levels of dead and downed in various locations. Most areas of the fire area have brush (fuel model 7) that will carry fire especially with a wind component. Live fuel moistures are extremely low, and will be listed as soon as they can be verified by local personnel.

FIRE BEHAVIOR

OUTPUTS

GENERAL:

Conditions should moderate over Wednesday as possible cloud cover and showers move into the fire area. RH 45%, temps at 94, and winds 20 foot, SW 5 mph in the morning and SW at 7 mph afternoon. Fire behavior should be smoldering, creeping, and possibly torching as the RH drops throughout the burn period. Dispersion index will be moderate at 57. Movement requires a brush component and torching may spot into adjacent fuels. Smoke may impact roaded areas in the early morning hours and as fire activity increases.

Fuel Model	ROS (ch/hr)		Flame Length (ft)		PIG	Spot_Dist
	Head	Backing	Head	Backing		
7- Southern Rough	11	8	3	2	50%	.2 mile
TU2 Timber	4	3	2	1	50%	.2 mile

Fire behavior predictions are for the hottest and driest period of the day.

SPECIFIC: Impassable Bay The fire area will continue to smolder and creep early in the day between Drop Point 1 and Drop Point 2, but could spread through torching especially later in the day with any NE wind component. Spotting today should minimize due to higher RH's with the chance of rain. Brush and downed logs will be more of a factor in fire spread as our large diameter fuels continue to dry. The amount of unburned fuels close to the line in Division A and C should be monitored closely.

Kelly Road This fire is a drier site and is burning in 20 year old rough. There is quite a bit of organic material due to lack of fire, and falling trees could be an issue as organic material has burned out around the root systems. Fire behavior will be smoldering and creeping in the am, with torching possible in the afternoon. Spotting should be minimized by higher RH's and the chance of rain today.

AIR OPERATIONS:

Smoke inversions should continue in the early morning hours and possibly until mid morning. Air ops should be smooth with light winds once any inversion in the fire area lifts, and until any sea breezes infiltrate the area in the late afternoon. Chance of rain today could limit air operations.

SAFETY

Unsettled weather today will bring an increased chance of lightning. Your safest place during lightning storms is in your vehicle.

Watch for wind shifts with afternoon sea breeze influences!

COMMUNICATION FOR INJURY/MEDICAL EMERGENCY

Do not use the name of the Injured individual over the radio. In the event of a minor injury, so state when relaying the information so a false sense of urgency is not. The Medical Unit Leader is to be notified in all injury situations.

Date: _____ Time: _____ Division _____

Location: _____

On Scene Point of Contact (Name & Position): _____ Radio Frequency _____

Medical personnel on site (name) _____

Type of Injury: _____

Sex _____ Age _____

Medical Injury _____ or Illness _____ Life Threatening Yes _____ No _____

Patient Condition- Critical _____ Serious _____ Minor _____ Conscious Yes _____ No _____

Additional medical equipment or personnel needed? (Type and Quantity) _____

Is air transportation needed: Yes _____ No _____ Can Patient sit up Yes _____ No _____ Weight _____

Location LAT _____ LONG _____ Drop Point _____

Patient Home Unit _____ Agency _____

Assessment BP _____ Pulse _____ Level of Consciousness _____ Skin _____

Difficulty Breathing Yes _____ No _____

On going Assessment- Document as they occur – on Scene personnel,

INCIDENT RADIO COMMUNICATIONS PLAN		1. Incident Name		2. Date/ Time Prepared		3. Operational Period Date/Time	
		Impassable Bay Fire		06-22-2011 2030		06-23-2011 0730 - 2200	
4. Basic Radio Channel Utilization							
Radio Type/Cache	Channel	Function	Frequency/Tone		Mode	Assignment	Remarks
King NIFC	1	Tac1	RX 168.0500	Tone 136.5	Narrow	DIV A - B - C - D	Post Human Repeaters where Needed
King NIFC	2	Tac 2	RX 168.2000	Tone 136.5	Narrow	TAC - Not assigned	Post Human Repeaters where Needed
King NIFC	3	Tac3	RX 168.6000	Tone 136.5	Narrow	DIV E - F	Post Human Repeaters where Needed
King NIFC	4	Tac 4	RX 166.7250	Tone 136.5	Narrow	DIV Y	Post Human Repeaters where Needed
King NIFC	5	Tac 5	RX 166.7750	Tone 136.5	Narrow	DIV Z	Post Human Repeaters where Needed
King NIFC	6	CMD	RX 173.0375	Tone None	Narrow	COMMAND WEST	Linked to Channel 7
King NIFC	7	CMD	RX 166.6125	Tone 136.5	Narrow	COMMAND EAST	Linked to Channel 6
King R 8	8	R - 8 Fire	RX 169.9000	Tone 136.5	Narrow	Local IA	Post Human Repeaters where Needed
King DOF 190	9	DOF 190	RX 151.2725	Tone None	Narrow	Primary IA for off Forest	Post Human Repeaters where Needed
King DOF 191	10	DOF 191	RX 151.2875	Tone None	Narrow	Local IA	Post Human Repeaters where needed
King NIFC	11	FOREST	RX 171.5500	Tone 167.9	Narrow	Olustee Forest Repeater	Forest Dispatch
King NIFC	12	FOREST	RX 171.5500	Tone 146.2	Narrow	Eddy Forest Repeater	Forest Dispatch
King NIFC	13	A/G 1	RX 166.6375		Narrow	Air to Ground Primary	AIR to Ground Primary Div Y & Z
King NIFC	14	A/G 2	RX 168.1250		Narrow	Air to Ground Secondary	Air to Ground Secondary Div A/B/C/D/E/F - IA
King NIFC	15	White	RX 154.2800	Tone None	Narrow	Local IA	
King NIFC	16	Air Guard	RX 168.6250	Tone 110.9	Narrow	Air Guard	Emergency Use Only Tone 110.9

5. Prepared by (Communications Unit) Walter Warrick COML

MEDICAL PLAN	1. Incident Name	2. Date Prepared	3. Time Prepared	4. Operational Period				
	Impassable Bay Fire	6/22/2011	2000	6/23/2011				
5. Incident Medical Aid Station								
Medical Aid Stations	Location			Paramedics				
				Yes	No			
ICP	OLUSTEE, FLORIDA			X				
6. Transportation								
A. Ambulance Services								
Name	Address	Phone	Paramedics					
			Yes	No				
BAKER COUNTY EMS	MACCLENNY	904-259-2861	X					
COLUMBIA CO. EMS	LAKE CITY	904-758-9111	X					
B. Incident Ambulances								
Name	Location			Paramedics				
				Yes	No			
7. Hospitals								
Name	Address	Travel Time		Phone	Helipad		Burn Center	
		Air	Grnd		Yes	No	Yes	No
LAKE SHORE	LAKE CITY	15 MIN	20 MIN.	386-292-8001	X			X
URGENT CARE	LAKE CITY	15 MIN	20M IN	386-758-2944		X		X
ED FRASER MEM.	MACCLENNY	15 MIN	20 MIN	904-259-3151	X			X
UNIV.MED. JACKSONVILLE	JACKSONVILLE	20 MIN	45 MIN.	904-549-4165	X			X
SHANDS HOSPITAL	GAINESVILLE FL	30 MIN	1 HRS	352-494-5616	X		X	
LIFE FLIGHT	JACKSONVILLE	30 MIN		904-202-2136	X			
8. Medical Emergency Procedures								
<p>Upon occurrence of a “MAJOR” medical or accident involving significant injury on the fireline. The nearest fireline Supervisor or Leader on the scene will be in charge and will clear all radio traffic on the incident “Command” Channel. The command channel will be used to coordinate response – do <u>not</u> use names.</p> <ul style="list-style-type: none"> o Obtain and facilitate nearest EMT’s to the scene, request medical unit response – DIVS in charge of scene. o Coordinate and facilitate appropriate transportation for injured with Medical Unit – EMT in charge of patient(s). o Nature of problem: # injured; Condition and Vitals; Location (GPS Coordinates) o Remove all unnecessary personnel from the accident scene – notify SOFR. o Secure the scene area and identify witnesses for later investigation – keep a log. o Use emergency form on back of medical plan to report to communications. <p style="text-align: center;">Life safety is the Number 1 Priority on this Incident</p>								
9. Prepared by (Medical Unit Leader)					10. Reviewed by (Safety Officer)			
DEB LOPEZ MATT PAYNE(T)					STEVE DAVIS			

Accident Incident within an Incident

The **Incident Commander** is responsible for overall action in case of a serious accident.

Upon occurrence of a “**MAJOR**” accident involving significant injury or fatality on the fireline, the highest qualified person on scene shall take control of the situation until the nearest **Division Supervisor** arrives on scene to assume control. Immediate and clear communication must be established between Operations and Division/Group Supervisors to determine who can arrive at the scene quickest and gain control of the situation. In the event of such an accident in camp or on incident roads on-site personnel shall take control until an **Operations Chief or Division Supervisor** arrive or **Local Law Enforcement** and or **Medical personnel** have assumed control.

The **Incident Dispatcher or Responsible Operations Individual** in charge of the accident will take immediate action to clear all radio traffic on the incident “Command Channel” by broadcasting **"Emergency Traffic Only"**, so that quick and proper coordination for handling the accident can take place.

Upon arrival at the accident scene, whoever has been designated to manage the situation (Ops or DIVS) should take immediate actions to:

- Obtain and facilitate EMT's to the scene – notify them you are in charge.
- Co-ordinate and facilitate appropriate transportation for injured.
- Move all unnecessary personnel from the accident scene.
- Secure the scene area and identify witnesses for investigation.

The **Safety Officer** will respond immediately to the scene of the accident to assist the Operations Chief or Division/Group Supervisor and shall be responsible for initiating the proper investigation and documentation by qualified personnel.

Immediately upon notification of an accident requiring emergency action the **Medical Unit Leader and Incident Commander** shall respond to incident communications.

Plans Chief, Logistics Chief, Finance Chief and **Information Officer** shall be notified and respond to incident communications in an appropriate manner that will not significantly affect ongoing operations.

The **Logistics Chief** shall attempt to control external communication, phones and radio. All information released from the incident shall be through the incident Information Officer with the approval of the Incident Commander.

The **Plans Chief** will make contact with the Agency Administrator who will in turn contact appropriate officials of the agency. If the accident involves a fatality, the Agency Administrator will contact the Sheriff's Office, the Coroner's Office, and the employing agency of the victim and will find out who will contact family members. The Plans Chief

will assure that an individual is assigned to document all communications regarding the accident.

At no time during the accident/fatality evacuation process will the name of the victim(s) be used.

The need of a *Critical Incident Stress Debriefing* for incident personnel will be discussed by the Core Team with input from the Medical Unit Leader, the Human Resource Specialist, and local / involved individuals. The Incident Commander will approve such debriefings.

Approved by:

Incident Commander

Date

KIDD'S Incident Management Team Cell Phone List

<i>Position</i>	<i>Name</i>	<i>Cell</i>
Command & General:		
ICT2	John Kidd	208-869-5979
ICDP	Tom Suwyn	435-864-7064
SOFR	Steve Davis	208-313-7835
SOF2	Ken Moore	435-313-2248
PIO2	Kirsten Cannon	702-595-2034
PIO2	Dick Birger	651-769-5952
OSC2	Tracy Swenson	435-553-5926
AOBD	Jill McCurdy	208-387-5737
OSC2	Colt Mortenson	970-756-4831
LSC2	Brent Crosland	435-253-2054
FSC2	Mike Taylor	435-592-0006
PSC2	Evan Boshell	435-691-9331
Operations:		
DIVS	Jason Kirks	435-259-9635
DIVS	Clint Coates	435-691-7272
DIVS	Brian Keating	435-259-9691
DIVS	Daren Turner	
ASGS	Chris Gamble	435-790-7095
ATGS	Dave McCormick	509-449-0804
HEB1	Don Nicolas	218-360-1816
ABRO	Darold Williams	386-752-0600
ATB MGR	Darrell Bohanon	386-758-9078
ATGS	Mike Melton	435-590-4712
Planning:		
RESL	Clark Tucker	435-823-6044
RESL	Renee Flanagan	435-368-5107
SITL	Lou Ballard	208-859-8359
GIST	Sarah Peterson	208-830-3104
FBAN	Chris Church	208-921-8656
DMOB	Linda Chappell	435-979-8356
READ	Carl Petrick	850-524-1233
CTSP	Heidi Little	801-618-5240
Logistics:		
COMT	Walter Warrick	208-313-4667
SPUL	Nan Coates	435-691-1218
FACL	Duane Stewart	435-616-8750
GSUL	Varian Allen	435-749-7164
EPQM	Art Partridge	435-979-4322
FUDL	Shannon Swann	702-271-6765
BCMG	Sean Stewart	435-616-2580
SECM	Randy Davis	435-691-3226
MEDL	Deb Lopez	435-406-1210
Finance:		
TIME	Stacy Heaps	435-287-7013
COST	Wendy Soper	435-590-4728
Trainees		
ICT2	Tracy Dunford	801-558-6508
AOBD	Kevin Greenhalgh	435-691-3771
DIVS	Tyko Isaacson	
DIVS	Bryan Brazzeal	435-680-3625
MEDL	Matt Payne	435-770-3391
OSC2	Brook Chadwick	801-541-6173

RESTAURANTS

Texas Roadhouse: 386-758-0074

Porterhouse Grill: 386-754-5907

Cracker Barrel: 386-755-5638 (Breakfast)

Applebee's: 386-752-7087

Blue Roof Grill: 386-719-2424

Pizza Hut: 386-752-3896

I-HOP : (Breakfast and Dinner)

Rates:

Breakfast = \$7.00

Lunch = \$11.00

Dinner = \$23.00

Tips will be paid by Government.

KIDD'S MANAGEMENT TEAM SUPPLY ORDER

Date & Time Order was Placed	Order # (DIVS + #)	Location & Time for Delivery (Division/LZ/DP/Lat Long)	Mode of delivery (Driven/Helo/DIVS to Pick up)	
Order received in Communications by (name):			Time:	
Order received in Supply by (name):			Time:	
Order received in Transportation by (name):			Time:	
Order received in Helibase by (name):			Time:	
Order shipped to line unit by (name): (Send this sheet to the line with the order)			Time:	
#	Item	Amount	Item	Amount
1.	Meals Breakfasts		26. Swivel ea.	
2.	Meals Lunches		27. Leadline ea.	
3.	Meals Dinners		28. Backpack Pump ea.	
4.	Meals MRE's/case		29. Slingable Blivet ea.	
5.	Water 5 gal. cubies		30. Folding Tank Size/ea.	
6.	Gatorade Case		31. Pumpkin Size/ea.	
7.	Batteries AA 1-Flat		32. Hose 1 ^{1/2} " / ft.	
8.	Batteries Specify Type		33. Hose 1" / ft.	
9.	Flagging (Specify type) # Roll		34. Hose 3/4" / ft.	
10.	Sleeping Bags ea		35. Reducer 1 ^{1/2} "X1"	
11.	Tarps/Plastic ea./roll		36. Reducer 1"X 3/4"	
12.	Parachute Cord roll		37. Gated "Y" 1 ^{1/2} "	
13.	Garbage Bags Box		38. Gated "Y" 1"	
14.	20 Man First Aid Kit ea.		39. Gated "Y" 3/4"	
15.	Coffee Kit w/propane ea.		40. Shut-off Valve 3/4"	
16.	Gas Raw		41. In-line Tee 1 ^{1/2} "X1"	
17.	Bar Oil Gal.		42. Nozzle 1 ^{1/2} "	
18.	2- cycle oil QT's		43. Nozzle 1"	
19.	Tool Shovel ea.		44. Nozzle 3/4"	
20.	Tool Pulaski ea.		45. Chainsaw Kit ea.	
21.	Tool Combi ea.		46. Mark 3 Pump Kit-Cache w/10 gal raw gas and 2 qts 2 cycle oil ea.	
22.	Tool Specify Type ea.			
23.	Fussee Case		47. Lightweight Pump Kit-Cache w/5 gal raw gas and 1 qt 2 cycle oil ea.	
24.	Drip Torches Full ea.			
25.	Drip Torch Mix 5 Gal.		48. Division Hose Lay Kit ea.	

GPS Datum: NAD 83**Team Ordering/ Timeline Process:**

0630 – Morning Briefing, start of crew time.

1100 – Last call to change spike camp resource (food, fuel, etc) location.

1500 – DIVS to have next day’s resource order ready for OPS.

- All crew level orders will be placed through DIVS.
- DIVS will place all orders through Communications Unit.
- All orders will be tracked using the process found on the front of form.

Division Hose Lay Kit Components

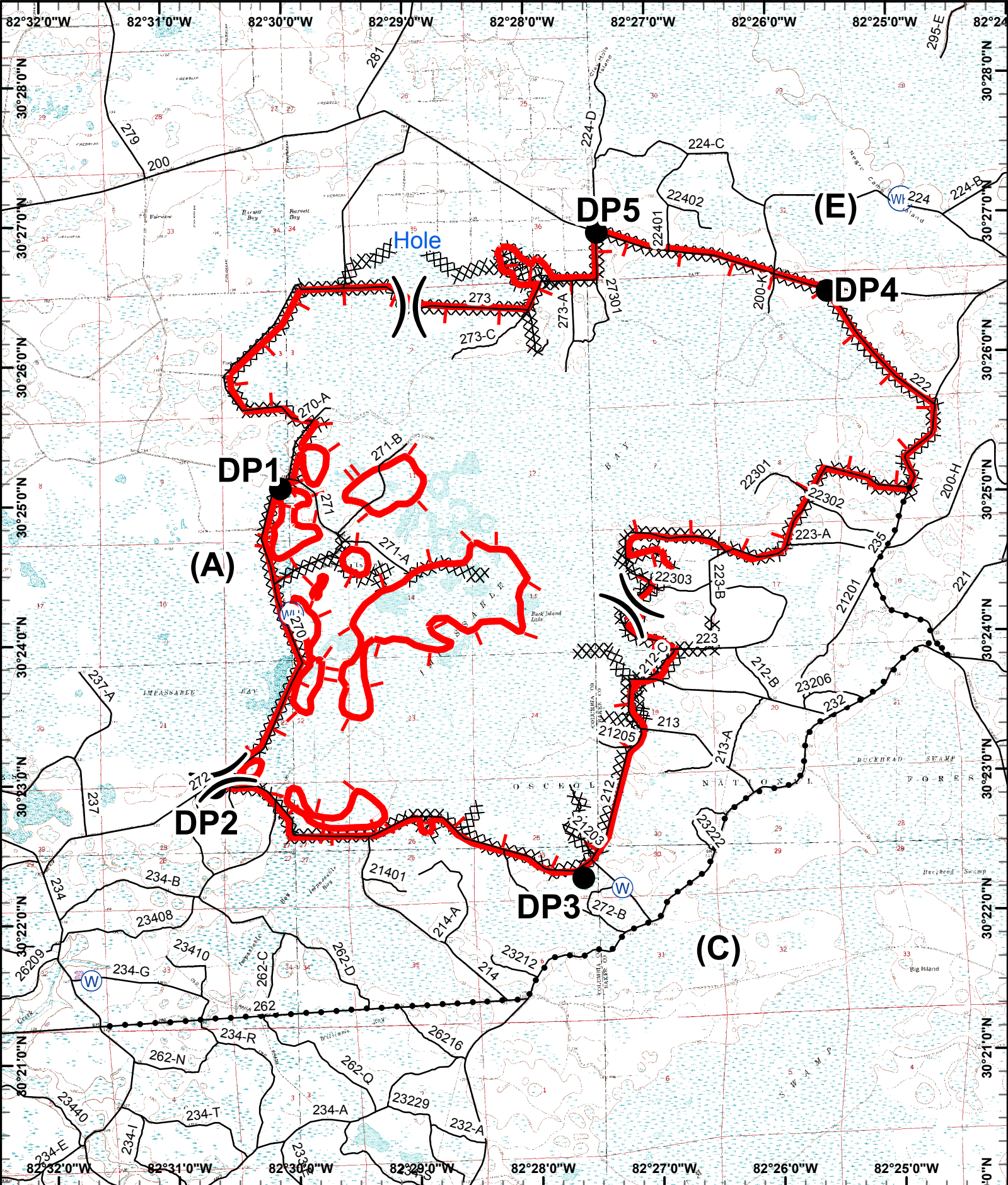
Item	NFES#	Quantity			
Hose 1½”	1239	1000’			
Hose 1”	1238	1000’			
Hose, ¾”	1016	500’			
Tee, 1 ½” – 1”	0731	5			
Nozzle, 1 ½”	0137	2			
Nozzle, 1”	0138	6			
Nozzle, ¾”	0136	12			
1 ½” Gated “Y”	0231	5			
1” Gated “Y”	2059	5			
¾” Gated “Y”	0272	6			
Shut off valve ¾”	0738	4			
Reducers, 1 ½” – 1”	0010	5			
Reducers, 1” – ¾”	0733	5			
Double Female 1”	0710	1			
Double Female 1 ½”	0857	1			

UNIT LOG	1. Incident Name	2. Date Prepared	3. Time Prepared
4. Unit Name/Designators	5. Unit Leader (Name and Position)		6. Operational Period

7. Personnel Roster Assigned		
Name	ICS Position	Home Base

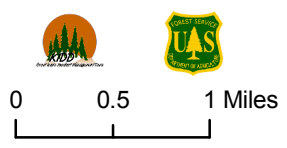
8. Activity Log	
Time	Major Events

9. Prepared by (Name and Position)

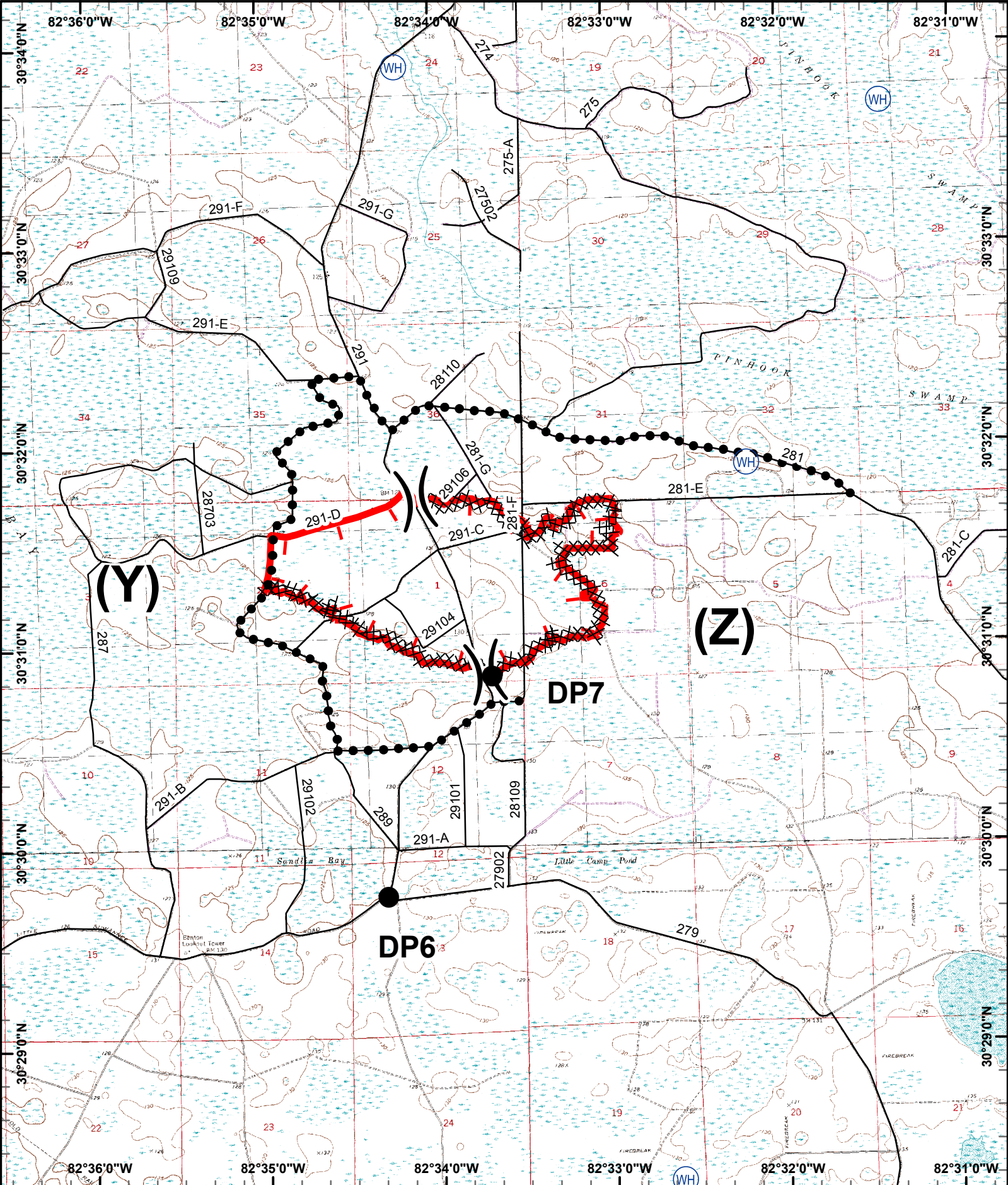


- Division
- Helispot & Dipsite
- Drop Point
- Active Fire Perimeter
- Contingency Line
- Water Source
- Dozer Line and Improved Line

Created June 22, 2011 1730
s.peterson



Impassable Bay Fire
 June 23, 2011
 FL-FNF-011023
 11,305 Acres



	Division		Helispot & Dipsite	Created June 22, 2011 1930 s.peterson	
	Drop Point		Active Fire Perimeter		Contingency Lines
	Water Source		Dozer Line and Improved Line		

Kelly Rd Fire
June 23, 2011
FL-FNF-004131
 825 Acres