

IMPASSABLE BAY COMPLEX



FRIDAY, JUNE 24, 2011

0700-2100

P8F5SU
(0805)

GPS: NAD 83 - FORMAT : DD MM. MM

INCIDENT OBJECTIVES	1. Incident Name	2. Date Prepared	3. Time Prepared
	Impassable Bay Complex	6/23/2011	2000
4. Operational Period 6/24/2011 0700-1900			
5. General Control Objectives For The Incident (Include Alternatives)			
<ol style="list-style-type: none"> 1. Provide for the safety of all incident personnel and the public, by adhering to all established guidelines and protocols. 2. Keep fire within the Impassable Bay swamp by using Forest Service Roads 270, 200, 222, 235, 232, 212 and 272, and contain the Kelly Road Fire south of 281 road, east of 287, north of Suwannee road and minimize growth on private land. 3. Manage the fire in a manner that is safe and cost effective for the values at risk. 4. Maintain a positive working relationship with our State and Federal partners and adjacent landowners by initiating and maintaining timely communications. Work closely with designated landowner (GOAL) representatives and adjacent county/state agencies to ensure that fire suppression and incident on respective lands are fully coordinated. 5. Together with the Florida Division of Forestry (DOF), coordinate fire management activities to maximize efficient use of wildland and structural resources on private and public lands including urban interface structures, timber, and sensitive habitats. Develop structure protection plans where necessary and minimize the impact to the private timber industry. 6. Provide initial attack resources as directed in the Delegation of Authority. 7. Prepare and implement a Rehabilitation Plan for current and future fires. 8. Minimize adverse effects to Cultural Resources through minimally ground disturbing suppression tactics, recording and flagging sites and avoid if possible. Report unauthorized digging or collection of sites. Record location of dozer lines and/or mechanically improved roads for rehabilitation needs. 			
6. Weather Forecast For Period			
See attached weather			
7. General Safety Message			
Drive defensively and with headlights on. Drink plenty of water and take frequent rest breaks. Ensure LCES is in place and known by all personnel.			
8. ATTACHEMENTS (X IF ATTACHED)			
<input checked="" type="checkbox"/> Organization List - ICS 203 <input checked="" type="checkbox"/> Medical Plan - ICS 206 <input checked="" type="checkbox"/> Air Ops Summary _____ <input checked="" type="checkbox"/> Division Assignment Lists - ICS 204 <input checked="" type="checkbox"/> Incident Map <input checked="" type="checkbox"/> Fire weather forecast _____ <input checked="" type="checkbox"/> Communications Plan - ICS 205 <input checked="" type="checkbox"/> Traffic Plan <input checked="" type="checkbox"/> Fire Behavior forecast _____			
9. Prepared By (Planning Section Chief)		10. Approved By (Incident Commander)	
EVAN BOSHELL		JOHN KIDD	

ORGANIZATION ASSIGNMENT LIST		9. Operations Section	
1. Incident Name IMPASSABLE BAY COMPLEX		Field Operations	Colt Mortenson Brook Chadwick (T)
2. Date Prepared June 24, 2011		Planning Operations	Tracy Swenson
3. Time 2000		a. Branch I	
4. Operational Period DAY SHIFT JUNE 24, 2011 0700-2100		Branch Director	
Position	Name	Division/Group	IA Steve Little
5. Incident Commander		Division/Group	CONTINGENCY Brian Keating
Incident Commanders	John Kidd	Division/Group	A/B/C/D/E/F Jason Kirks Bryan Brazzeal
Deputy Incident Commander	Tom Suwyn	Division/Group	Y-Kelly Clint Coates Tyko Isaacson
Incident Commander (T)	Tracy Dunford	Division/Group	Z-Kelly Daren Turner
Safety Officers	Steve Davis/Ken Moore	Division/Group	
Information Officer	Dick Birger Kirsten Cannon	Division/Group	
6. Agency Representative		b. Branch II	
Agency	Name	Branch Director	
FS – Forest Supervisor	Susan Jeheber-Matthews	Division/Group	
FS – Agency Admin. Rep.	Ivan Green – DFR	c. Branch III	
FS – Agency Admin. Rep.	Ron Smith	Branch Director	
Resource Advisor - FS	Carl Petrick	Division/Group	
Florida DOF	Barry Coulliette	d. Air Operations Branch	
7. Planning Section		Air Operations Branch Director	Jill McCurdy
Chief	Evan Boshell	AOBD(T)	Kevin Greenhalgh
Resources Unit	Clark Tucker	ABRO	Darold Williams
Resources Unit	Renee Flanagan	Air Tactical Group Supervisor	Mike Melton
Documentation Unit	Clark Tucker	Air Tactical Group Supervisor	Dave McCormick
Demob Unit	Linda Chappell/Heidi Little	Air Support Group Supervisor	Chris Gamble
Situation Unit	Lou Ballard	Helibase Manager T-1	Don Nicholas
FBAN	Chris Church	HEB2(T)	Fred Alldridge
IMET		ATB Mgr.	Darrell Bohanon
GIS Specialist	Sarah Peterson	10. Finance Section	
Training Specialist		Chief	Mike Taylor
Computer Specialist	Heidi Little	Time Unit	Stacey Heaps
Status/Check-in		Cost Unit	Wendy Soper
8. Logistics Section		Compensation/Claims Unit	
Chief	Brent Crosland	Procurement Unit Leader	
LSC2(T)	Varian Allen	Prepared by Resource Unit Leader	
Supply Unit	Nan Coates	CLARK TUCKER	
Facilities Unit	Duane Stewart		
Ground Support Unit	Art Partridge		
Communications Unit	Walter Warrick		
Medical Unit	Deb Lopez		
Ordering Mgr	Randy Davis		
Food Unit	Shannon Swann		

Division Assignment List		1. Branch		2. Division/Group IA			
3. Incident Name IMPASSABLE BAY		4. Operational Period 06/24/11 Friday Day Shift 0700 - 2100					
5. Operations Personnel							
Operations Chief	MORTENSON, COLT	ICT4		STEVE LITTLE			
Operations Chief	SWENSON, TRACY	Air Attack Supervisor		MELTON, MICHAEL A			
Operations Chief(T)	BROOK CHADWICK	Safety Officer					
6. Resources Assigned this Period							
Strike Team/Task Force/ Resource Designator	Leader	Num of Pers.	Trans. Y/N	Drop Off PT./Time	Pick Up PT./Time		
ICT4	KOSCHAK	1	N	ICP/0730	OFFICE/2200		
ENG 461	MUNSON	2	N	ICP/0730	OFFICE/2200		
ENG E-4	BARNES	3	N	ICP/0730	OFFICE/2200		
ENG MARYLAND 5	WAGNER (6/29)	2	N	ICP/0730	OFFICE/2200		
ENG FS E-18		3	N	ICP/0730	OFFICE/2200		
TPL WILDLANDS 1	ROBERTS	2	N	ICP/0730	OFFICE/2200		
DOZER A2		1	N	ICP/0730	OFFICE/2200		
DOZER 57		1	N	ICP/0730	OFFICE/2200		
DOZER 59		1	N	ICP/0730	OFFICE/2200		
7. Control Operations PATROL ALL FIRES OTHER THAN IMPASSABLE BAY AND KELLY. BE READY FOR IA ASSIGNMENTS.							
8. Special Instructions INSURE LCES IS IN PLACE. DRIVE DEFENSIVELY WITH LIGHTS ON AT ALL TIMES.							
9. Division/Group Communications Summary							
Function	Frequency - RX	Frequency - TX	Tone	System	Channel	System	Channel
Command	173.0375	167.3250	136.5	NIFC	6		
Tactical Div/Group							
Logistics							
Air to Ground	168.1250	168.1250		NIFC	14		
Prepared by (Resource Unit Leader) CLARK TUCKER		Approved by (Planning Section Chief) EVAN BOSHELL			Date Prepared 06/23/11		Time Prepared 0538

Division Assignment List		1. Branch			2. Division/Group CONTINGENCY		
3. Incident Name IMPASSABLE BAY		4. Operational Period 06/24/11 Friday Day Shift 0700 - 2100					
5. Operations Personnel							
Operations Chief	MORTENSON, COLT	Division/Group Supervisor		KEATING, BRIAN			
Operations Chief	SWENSON, TRACY	Air Attack Supervisor		MELTON, MICHAEL A			
Operations Chief(T)	BROOK CHADWICK	Safety Officer					
6. Resources Assigned this Period							
Strike Team/Task Force/ Resource Designator	Leader	Num of Pers.	Trans. Y/N	Drop Off PT./Time	Pick Up PT./Time		
F350 & TRAILER - ROT	WOVELL	1	N	FIRE/0700	STATION/2100		
EXCAVATOR - ROT	CHAVARRIA	1	N	FIRE/0700	STATION/2100		
EXCAVATOR W/ FECON - ROT	TRAVIS	1	N	FIRE/0700	STATION/2100		
GRADER - ROT	HARVEY	1	N	FIRE/0700	STATION/2100		
DUMP TRUCK - ROT	FARRIS	1	N	FIRE/0700	STATION/2100		
LOWBOY & TRANS. - ROT	WORRELL	1	N	FIRE/0700	STATION/2100		
EXCAVATOR		1	N	FIRE/0700	STATION/2100		
MOWER		1	N	FIRE/0700	STATION/2100		
7. Control Operations CONTINUE PREP WORK ON ROAD SYSTEM. COORDINATE WITH COOPERATORS.							
8. Special Instructions INSURE LCES IS IN PLACE. DRIVE DEFENSIVELY WITH LIGHTS ON AT ALL TIMES.							
9. Division/Group Communications Summary							
Function	Frequency - RX	Frequency - TX	Tone	System	Channel	System Channel	
Command	173.0375	167.3250	136.5	NIFC	6		
Tactical Div/Group							
Logistics							
Air to Ground	168.1250	168.1250		NIFC	14		
Prepared by (Resource Unit Leader) CLARK TUCKER		Approved by (Planning Section Chief) EVAN BOSHELL		Date Prepared 06/23/11		Time Prepared 0547	

Division Assignment List	1. Branch	2. Division/Group A/B/C/D/E/F
---------------------------------	-----------	---

3. Incident Name IMPASSABLE BAY	4. Operational Period 06/24/11 Friday Day Shift 0700 - 2100
---	---

5. Operations Personnel

Operations Chief	COLT MORTENSON	Division/Group Supervisor	JASON KIRKS
Operations Chief	TRACY SWENSON	Air Attack Supervisor	MICHAEL A MELTON
Operations Chief(T)	BROOK CHADWICK	Safety Officer	ROBERT E BRITAIN

6. Resources Assigned this Period

Strike Team/Task Force/ Resource Designator	Leader	Num of Pers.	Trans. Y/N	Drop Off PT./Time	Pick Up PT./Time
DIVS(T)	BRYAN BRAZZEAL	1	N	ICP/0700	STATION/2100
EMT	MEREDITH LUND	1	N	ICP/0700	STATION/2100
ENG 632	COOK	3	N	ICP/0700	STATION/2100
ENG MAINE 15	HATCH	3	N	ICP/0700	STATION/2100
ENG MAINE 18	COUSINS	3	N	ICP/0700	STATION/2100
ENG 2622	RINGER (6/30)	5	N	ICP/0700	STATION/2100
BURNS HELITACK		3	N	ICP/0700	STATION/2100

7. Control Operations
PATROL AND MOPUP AS NEEDED.

8. Special Instructions
INSURE LCES IS IN PLACE.
DRIVE DEFENSIVELY WITH LIGHTS ON AT ALL TIMES.
DO NOT DRIVE IN DIVISION D UNLESS OPERATIONS CRITICAL.

9. Division/Group Communications Summary

Function	Frequency - RX	Frequency - TX	Tone	System	Channel	System	Channel
Command	173.0375	167.3250	136.5	NIFC	6		
Tactical Div/Group	168.0500	168.0500	136.5	NIFC	1		
Logistics							
Air to Ground	168.1250	168.1250		NIFC	14		

Prepared by (Resource Unit Leader) CLARK TUCKER	Approved by (Planning Section Chief) EVAN BOSHELL	Date Prepared 06/23/11	Time Prepared 0553
---	---	----------------------------------	------------------------------

Division Assignment List		1. Branch	2. Division/Group Y - Kelly
---------------------------------	--	-----------	---------------------------------------

3. Incident Name IMPASSABLE BAY	4. Operational Period 06/24/11 Friday Day Shift 0700 - 2100
---	---

5. **Operations Personnel**

Operations Chief	COLT MORTENSON	Division/Group Supervisor	CLINT C COATES
Operations Chief	TRACY SWENSON	Air Attack Supervisor	MICHAEL A MELTON
Operations Chief(T)	BROOK CHADWICK	Safety Officer	

6. **Resources Assigned this Period**

Strike Team/Task Force/ Resource Designator	Leader	Num of Pers.	Trans. Y/N	Drop Off PT./Time	Pick Up PT./Time
DIVS(T)	TYKO ISAACSON	1	N	ICP/0700	STATION/2100
ENG E-17 (BRUSH 12)	CORNETT	3	N	ICP/0700	STATION/2100
ENG E-18 (BRUSH 74)	ODEN	3	N	ICP/0700	STATION/2100
KRASSEL HELITACK	MOAN	5	N	ICP/0700	STATION/2100
W/T - 20		1	N	ICP/0700	STATION/2100

7. Control Operations
 IMPROVE LINES AND MOPUP.

8. Special Instructions
 INSURE LCES IS IN PLACE.
 DRIVE DEFENSIVELY WITH LIGHTS ON AT ALL TIMES

9. **Division/Group Communications Summary**

Function	Frequency - RX	Frequency - TX	Tone	System	Channel	System	Channel
Command	173.0375	167.3250	136.5	NIFC	6		
Tactical Div/Group	166.7250	166.7250	136.5	NIFC	4		
Logistics							
Air to Ground	166.6375	166.6375		NIFC	13		

Prepared by (Resource Unit Leader) CLARK TUCKER	Approved by (Planning Section Chief) EVAN BOSHHELL	Date Prepared 06/23/11	Time Prepared 1546
---	--	----------------------------------	------------------------------

Division Assignment List			1. Branch		2. Division/Group Z - Kelly		
3. Incident Name IMPASSABLE BAY			4. Operational Period 06/24/11 Friday Day Shift 0700 - 2100				
5. Operations Personnel							
Operations Chief		COLT MORTENSON			Division/Group Supervisor		DAREN TURNER
Operations Chief		TRACY SWENSON			Air Attack Supervisor		MICHAEL A MELTON
Operations Chief(T)		BROOK CHADWICK			Safety Officer		
6. Resources Assigned this Period							
Strike Team/Task Force/ Resource Designator		Leader		Num of Pers.	Trans. Y/N	Drop Off PT./Time	Pick Up PT./Time
ENG WILDLAND WAREHOUSE		CIRONE		3	N	ICP/0700	STATION/2100
ENG 35		ROBERTS		3	N	ICP/0700	STATION/2100
ENG 705		WESAW		3	N	ICP/0700	STATION/2100
ENG BRUSH 2		TALBOT		3	N	ICP/0700	STATION/2100
W/T - 10				1	N	ICP/0700	STATION/2100
7. Control Operations IMPROVE LINES AND MOPUP							
8. Special Instructions INSURE LCES IS IN PLACE. DRIVE DEFENSIVELY WITH LIGHTS ON AT ALL TIMES.							
9. Division/Group Communications Summary							
Function	Frequency - RX	Frequency - TX	Tone	System	Channel	System	Channel
Command	173.0375	167.3250	136.5	NIFC	6		
Tactical Div/Group	166.7750	166.7750	136.5	NIFC	5		
Logistics							
Air to Ground	166.6375	166.6375		NIFC	13		
Prepared by (Resource Unit Leader) CLARK TUCKER			Approved by (Planning Section Chief) EVAN BOSHELL		Date Prepared 06/23/11		Time Prepared 1552

ICS 220 - Continued

10. TASK/ MISSION/ ASSIGNMENT (Type/ function includes: Air Tactical, Retardant, Recon, Personnel Transport, Bucket Operations, SAR, etc.)					
TYPE/FUNCTION	PRIORITY	NAME OF PERSONNEL OR CARGO (If applicable) or instructions for tactical aircraft	MISSION START	FLY FROM	FLY TO
Air Tactical		Coverage by ATGS as needed or requested by OPS.	0900	ATB	Fire
Retardant Drops		Requested by DIVS through ATGS and approved by OPS.	1000	ATB	Fire
Water Drops		Requested by DIVS through ATGS and approved by OPS.	0900	Helibase	Fire
Medical Transport		Crew Boss contact DIVS; DIVS contact ATGS for medical evacuations/transport.	As Requested	Helibase	Fire
Recon		As requested and approved by OPS.	As Requested	Helibase	Fire
Initial Attack		As directed by OPS.			

Helibase, Dip Sites, Pick Up Sites, etc.	Helispots, Sling Spots, Repeater Sites, etc.
Helibase 30° 11' 13" x 82° 34' 27"	

VI. Wind Restrictions.

The capability to fly a helicopter in excessive wind conditions varies considerably with the weight class of the helicopter and the degree of turbulence associated with the wind. If the helicopter flight manual or the helicopter operator's policy does not set lower limits, the following shall be used. These limits may be further restricted at the discretion of the Pilot or other air operations personnel. Limitations are as follows:

**FLIGHT ABOVE GROUND LEVEL
FLIGHT PERMITTED IN WINDS LESS THAN / MAXIMUM GUST SPREAD (in knots)**

Flights More Than 500' AGL		
Type 1 Helicopters	Type 2 Helicopters	Type 3 Helicopters
50 kts (43 mph) / Gusts: N/A	50 kts (43 mph) / Gusts: N/A	50 kts (43 mph) / Gusts: N/A
Flights Less Than 500' AGL		
Type 1 Helicopters	Type 2 Helicopters	Type 3 Helicopters
40 kts (35 mph) / 15 (13 mph) kts	40 kts (35 mph) / 15 (13 mph) kts	30 kts (26 mph)/15 kts (13 mph)

Approved by: /s/ Jill McCurdy, AOBD

FIRE WEATHER PLANNING FORECAST FOR NORTHEAST FLORIDA/SOUTHEAST GEORGIA
 NATIONAL WEATHER SERVICE JACKSONVILLE FL
 215 PM EDT THU JUN 23 2011

.DISCUSSION...A SURFACE TROUGH WILL LINGER OVER THE SOUTHEAST REGION THROUGH THE WEEKEND WHICH WILL BRING AN INCREASE IN MOISTURE AND HIGH CHANCES OF MAINLY AFTERNOON AND EVENING SHOWERS AND THUNDERSTORMS. RELATIVE HUMIDITIES ARE EXPECTED TO REMAIN ABOVE CRITICAL VALUES.

WEST TO SOUTHWEST PREVAILING FLOW IS EXPECTED WITH SUSTAINED SPEEDS LESS THAN 15 MPH. WINDS WILL BECOME SSE NEAR THE ATLANTIC COAST IN THE AFTERNOONS AND EVENING WITH THE EAST COAST SEA BREEZE WITH SPEEDS NEAR 15 MPH AT TIMES. WINDS WILL ALSO BE HIGHER AND GUSTY NEAR THUNDERSTORMS.

FLZ020>022-035-241000-
 HAMILTON-SUWANNEE-~~COLUMBIA~~-GILCHRIST-
 215 PM EDT THU JUN 23 2011

	TONIGHT	FRI	FRI NIGHT	SAT
CLOUD COVER	PCLDY	MCLDY	PCLDY	PCLDY
CHANCE PRECIP (%)	30	50	30	50
WEATHER TYPE	TSTMS	TSTMS	TSTMS	TSTMS
TEMP	71	94	70	94
RH (%)	100	47	100	41
20FT WND MPH (AM)		SW 3		SW 2
20FT WND MPH (PM)	W 2	SW 6	S 2	NW 2
PRECIP DURATION	2	2	1	2
PRECIP BEGIN	8 PM	CONTINUING	CONTINUING	8 AM
PRECIP END	CONTINUING	CONTINUING	2 AM	CONTINUING
PRECIP AMOUNT	0.07	0.26	0.07	0.16
LAL	3	4	3	3
MIXING HEIGHT(FT-AGL)	200	5400	200	6100
TRANSPORT WND (MPH)	SW 5	W 12	S 6	NE 5
DISPERSION INDEX	1	32	2	23
MAX LVORI	9		10	

REMARKS...NONE.

.FORECAST FOR DAYS 3 THROUGH 7...

.SUNDAY...MOSTLY CLOUDY. A 50 PERCENT CHANCE OF SHOWERS AND THUNDERSTORMS. LOWS IN THE LOWER 70S. HIGHS IN THE LOWER 90S. EAST WINDS UP TO 5 MPH.

.MONDAY...PARTLY CLOUDY. A 40 PERCENT CHANCE OF SHOWERS AND THUNDERSTORMS. LOWS IN THE LOWER 70S. HIGHS IN THE LOWER 90S. SOUTHEAST WINDS AROUND 5 MPH.

.TUESDAY THROUGH THURSDAY...MOSTLY CLOUDY. A 40 PERCENT CHANCE OF SHOWERS AND THUNDERSTORMS. LOWS IN THE LOWER 70S. HIGHS IN THE LOWER 90S. SOUTHEAST WINDS 5 TO 10 MPH.

FIRE BEHAVIOR FORECAST

FORECAST NUMBER: 6	TYPE OF FIRE: Wildland Fire
FIRE NAME: Impassable Bay - Kelly Road	OPERATIONAL PERIOD: 24 June 2011
DATE ISSUED: 23 June 2011	TIME ISSUED: 1930
UNIT: Osceola NF Olustee Ranger District	SIGNED: Chris Church – FBAN

INPUTS

WEATHER SUMMARY: . Synopsis...short term...thunderstorm chances will continue to range from scattered to low end likely across the area...starting along the Gulf Coast in the mornings and shifting E to meet up with a mid-afternoon Seabreeze. Most areas should receive some rainfall...with highest amounts E of I-75 in NE Florida. Weak mid-level disturbances will impact mainly SE Georgia...bringing the possibility of overnight percent of precipitation (pops). However...these will be difficult to predict timing.

FUELS:

The KDBI for the fire area is above the 97th percentile and near records for seasonal average. The most recent ERC measured for this area shows the ERC dropping to the 80th percentile due to rain received. Fuels are a mixed southern rough element including slash pine and bald cypress with scattered longleaf pine. The understory consists of palmetto, gallberry, and mixed varieties of brush. Areas with timber contain a moderate dead and down component with higher levels of dead and downed in various locations. Most areas of the fire area have brush (fuel model 7) that will carry fire especially with a wind component. Live fuel moistures are extremely low, and will be listed as soon as they can be verified by local personnel.

FIRE BEHAVIOR	OUTPUTS
----------------------	----------------

GENERAL:

Conditions should moderate again, as probable cloud cover and showers move into the fire area for the second consecutive day. RH 47%, temp at 94, and winds 20 foot, SW 3 mph in the morning and SW at 6 mph afternoon. Fire behavior should be smoldering, and creeping, with rare intermittent short lived torching, as any T-cells increase winds over your fire. Dispersion index will be low at 32. Movement requires a wind component and torching may spot into adjacent fuels. Smoke may impact roaded areas in the early morning hours and as fire activity increases.

Fuel Model	ROS (ch/hr)		Flame Length (ft)		PIG	Spot_Dist
	Head	Backing	Head	Backing		
7- Southern Rough	5	3	2	1	50%	.1 mile
TU2 Timber	3	2	1	1	50%	.1 mile

Fire behavior predictions are for the hottest and driest period of the day.

SPECIFIC: Impassable Bay The fire area will continue to smolder and creep early in the day between Drop Point 1 and Drop Point 2 and in the unburned islands in the interior, but could spread through torching especially later in the day with any significant thunderstorm wind component. Spotting today should minimize due to higher RH's and with the chance of rain again today. Brush and downed logs will be less of a factor today in fire spread until our large diameter fuels get a days respite from any moisture. The amount of unburned fuels close to the line in Division A and C should be monitored closely.

Kelly Road This fire is a drier site and is burning in 20 year old rough. There is quite a bit of organic material due to lack of fire, and falling trees could be an issue as organic material has burned out around the root systems. Fire behavior will be smoldering and creeping in the am, with rare intermittent torching possible in the afternoon with any significant downdraft winds. Spotting should be minimized by higher RH's and the chance of rain again today.

AIR OPERATIONS:

Smoke inversions should be negligible today on the Kelly Road Fire, and minimal on the Impassable Bay Fire. Air ops should be smooth early in the day until any sea breezes or thunderstorms infiltrate the area in the afternoon. Chance of rain today could limit air operations due to visibility and potential lightning hazards.

SAFETY

Unsettled weather today will again bring an increased chance of lightning.

Your safest place during lightning storms is in your vehicle.

Watch for wind shifts with afternoon sea breeze influences and around any thunderstorms!



SAFETY MESSAGE

SAFETY IS OUR FIRST PRIORITY

Fire fighter safety comes first on every fire, every time



LCES FIRE FIGHTERS CODE OF CONDUCT IRPG WORK-REST GUIDELINES

Lookouts Communications Escape Routes Safety Zones

Make Sure LCES Is In Place

Each firefighter must know the interconnection of LCES - lookouts, communications, escape routes, and safety zones. LCES should be established before fighting the fire: Select lookouts, set up a communications plan, choose escape routes, and select safety zones.

Safety Thought

As you walk through the forest, it is not the giant redwoods that trip you up. It's the vines and underbrush. Don't get complacent about hazards just because you are not facing a 100-foot flame-length.

MAJOR HAZARDS AND RISKS

- | | |
|---|--|
| <ul style="list-style-type: none"> • Snags—heads up! • Bugs, Alligators, Snakes-LEAVE ALONE • Spotting and torching--LCES • Potential for extreme fire behavior • Multiple Aircraft | <ul style="list-style-type: none"> • Dehydration—drink plenty of fluids • Driving—narrow roads, sand • Traffic through rural/residential areas • Thunderstorms and lightning potential • If you do not wear the proper PPE, you are at risk of being injured or killed |
|---|--|

FIRE FIGHTER FATIGUE

- Fatigue must be managed to assure wellness and safety by everyone who is involved in a wildland fire situation.
- Exhaustion of our people, because of fatigue, forces us to sometimes rely on other qualified resources. As we do so, we must be extra careful that our standards in production, performance, and safety are not compromised.
- Cumulative fatigue is a killer. It prevents sound decision-making and dulls reaction times.
- Fire fighters **MUST** assure their situational awareness is sound.
- Our values are simple...firefighter and public safety are our number one concern to be addressed within the priorities of suppression. If we error, let it be in favor of assuring that every firefighter and support personnel goes home safe and sound and goes home confident that his or her safety was of the utmost concern to the local hosting agency and fire team.

10 STANDARD FIRE ORDERS

We Don't Bend Them,
We Don't Break Them



**DON'T TURN YOUR BACK ON
FIRE SAFETY!**

FIRE BEHAVIOR

1. Keep informed on fire weather conditions and forecasts.
2. Know what your fire is doing at all times.
3. Base all actions on current and expected behavior of the fire.

FIRELINE SAFETY

4. Identify escape routes and safety zones, and make them known.
5. Post lookouts when there is possible danger.
6. Be alert. Keep calm. Think clearly. Act decisively.

ORGANIZATIONAL CONTROL

7. Maintain prompt communication with your forces, your supervisor and adjoining forces.
8. Give clear instructions and insure they are understood.
9. Maintain control of your forces at all times.

IF YOU CONSIDER 1-9, THEN

10. Fight fire aggressively, having provided for safety first.



**.Which one
Wasn't careful?**

DIV		TACTICAL WATCHOUTS	LCES HAZARD CONTROL ** Denotes Common Denominator of Tragedy Fires
ALL	X X X X X	Under slung Fireline Mid-slope Fireline Unburned Fuel Indirect Fireline Downhill Fireline Frontal Assault Unanchored Small→Large Fire**	<ul style="list-style-type: none"> • Staff dedicated lookouts at pre-identified vantage points • Staff aerial lookout. During major threatening activity, assess & provide direction • Establish human repeater site • Take hourly weather observations over command frequency • Abort assignment if communications cannot be maintained • Weather watch system to be developed by FBAN/Meteorologist • Flag, time improve/construct multiple escape routes and safety zones • Establish situation trigger points for disengagement/exit to safety zones
ALL	X	Multiple Aircraft	<ul style="list-style-type: none"> • Air Operations ensures that all incident aviation personnel are briefed on daily tactics, planned use, and safety hazards • Maintain positive direction between Air Attack, lead plane pilot, assigned aircraft, and ground operations • If confusion or conflicting priorities develop, STOP operations, until they can be safely continued
ALL	X	Intruder Aircraft	<ul style="list-style-type: none"> • Designate TFR airspace over the incident air operations area • Report airspace conflicts or intrusion immediately to Air Support • Curtail air operations, as needed, until airspace is clear
ALL	X	Bucket Drops	<ul style="list-style-type: none"> • Ensure clear air-ground communications • Stay clear of flight zones and drop areas. • Watch out for rotor wash or air tanker turbulence and potentially erratic fire behavior • Keep heads up for snags and hazard trees
ALL	X	Air Support Dependent	<ul style="list-style-type: none"> • Staff dedicated lookouts at pre-identified vantage points. • Staff aerial lookout. During major threatening activity, assess & provide direction • Do go/no go assessment for ground operations • Ensure that firefighter safety is not compromised
ALL	X	Air Operations	Use clear text communication and identify ground contact with pilot. Clear drop area of all personnel prior to drop. No personnel in zone during dipping or dropping operation. Watch for erratic winds along ridges. Stay heads up with helicopter operations and crew shuttles. Pay attention to helitack personnel. Stay buckled up until released by helitack.
ALL	X	Spotting, Torching	<ul style="list-style-type: none"> • Watch for smoldering fires picking up over large areas, trees crowning out inside of fireline, high sustained rate of spread, well-developed convection column, hot/dry. • Patrol for spots especially after torching. • Post lookouts
ALL	X X	Dehydration Heat Stress	<ul style="list-style-type: none"> • Drink plenty of fluids (1 qt/hr); ensure adequate replacement water supplies • Pace work; allow frequent periods of rest in shade, if possible • Monitor fitness of crews for assignments • Limit shift lengths
ALL	X	Snags	<ul style="list-style-type: none"> • Stay alert for strong winds, fire damaged trees, air operations turbulence, vibrations from heavy equipment, , rot or shallow-rooted trees • Scout, identify and flag hazards, fell dangerous trees near the line • Do go/no go assessment prior to falling • Post lookouts, assess trees in work areas, issue daily warnings
ALL	X	Road Hazards	SLOW DOWN, do not over-drive dirt roads, turn on headlights, wear seatbelts, maintain spacing, check brakes, clean windshield, watch backing and use a spotter when available. Use caution on one-way access roads.

INCIDENT RADIO COMMUNICATIONS PLAN			1. Incident Name		2. Date/ Time Prepared		3. Operational Period Date/Time	
			Impassable Bay Complex		06-23-2011 2030		06-24-2011 0730 - 2200	
4. Basic Radio Channel Utilization								
Radio Type/Cache	Channel	Function	Frequency/Tone		Mode	Assignment	Remarks	
King NIFC	1	Tac1	RX 168.0500 TX 168.0500	Tone 136.5 Tone 136.5	Narrow	DIV A - B - C - D - E - F	Post Human Repeaters where Needed	
King NIFC	2	Tac 2	RX 168.2000 TX 168.2000	Tone 136.5 Tone 136.5	Narrow	NIGHT SHIFT	Post Human Repeaters where Needed	
King NIFC	3	Tac3	RX 168.6000 TX 168.6000	Tone 136.5 Tone 136.5	Narrow	UNASSIGNED	Post Human Repeaters where Needed	
King NIFC	4	Tac 4	RX 166.7250 TX 166.7250	Tone 136.5 Tone 136.5	Narrow	DIV Y	Post Human Repeaters where Needed	
King NIFC	5	Tac 5	RX 166.7750 TX 166.7750	Tone 136.5 Tone 136.5	Narrow	DIV Z	Post Human Repeaters where Needed	
King NIFC	6	CMD	RX 173.0375 TX 167.3250	Tone None Tone 136.5	Narrow	COMMAND WEST	Linked to Channel 7	
King NIFC	7	CMD	RX 166.6125 TX 168.4000	Tone 136.5	Narrow	COMMAND EAST	Linked to Channel 6	
King R 8	8	R - 8 Fire	RX 169.9000 TX 169.9000	Tone 136.5	Narrow	Local IA	Post Human Repeaters where Needed	
King DOF 190	9	DOF 190	RX 151.2725 TX 151.2725	Tone None Tone None	Narrow	Primary IA for off Forest	Post Human Repeaters where Needed	
King DOF 191	10	DOF 191	RX 151.2875 TX 151.2875	Tone None Tone None	Narrow	Local IA	Post Human Repeaters where needed	
King NIFC	11	FOREST	RX 171.5500 TX 172.3750	Tone 167.9	Narrow	Olustee Forest Repeater	Forest Dispatch	
King NIFC	12	FOREST	RX 171.5500 TX 172.3750	Tone 146.2	Narrow	Eddy Forest Repeater	Forest Dispatch	
King NIFC	13	A/G 1	RX 166.6375 TX 166.6375		Narrow	Air to Ground Primary	AIR to Ground Primary Div Y & Z	
King NIFC	14	A/G 2	RX 168.1250 TX 168.1250		Narrow	Air to Ground Secondary	Air to Ground Secondary A/B/C/D/E/F - IA	
King NIFC	15	White	RX 154.2800 TX 154.2800	Tone None Tone None	Narrow	Local IA		
King NIFC	16	Air Guard	RX 168.6250 TX 168.6250	Tone 110.9	Narrow	Air Guard	Emergency Use Only Tone 110.9	

5. Prepared by (Communications Unit) Walter Warrick COML

COMMUNICATION FOR INJURY/MEDICAL EMERGENCY

Do not use the name of the Injured individual over the radio. In the event of a minor injury, so state when relaying the information so a false sense of urgency is not. The Medical Unit Leader is to be notified in all injury situations.

Date: _____ Time: _____ Division _____

Location: _____

On Scene Point of Contact (Name & Position): _____ Radio Frequency _____

Medical personnel on site (name) _____

Type of Injury: _____

Sex _____ Age _____

Medical Injury _____ or Illness _____ Life Threatening Yes _____ No _____

Patient Condition- Critical _____ Serious _____ Minor _____ Conscious Yes _____ No _____

Additional medical equipment or personnel needed? (Type and Quantity) _____

Is air transportation needed: Yes _____ No _____ Can Patient sit up Yes _____ No _____ Weight _____

Location LAT _____ LONG _____ Drop Point _____

Patient Home Unit _____ Agency _____

Assessment BP _____ Pulse _____ Level of Consciousness _____ Skin _____

Difficulty Breathing Yes _____ No _____

On going Assessment- Document as they occur – on Scene personnel,

Accident Incident within an Incident

The **Incident Commander** is responsible for overall action in case of a serious accident.

Upon occurrence of a “**MAJOR**” accident involving significant injury or fatality on the fireline, the highest qualified person on scene shall take control of the situation until the nearest **Division Supervisor** arrives on scene to assume control. Immediate and clear communication must be established between Operations and Division/Group Supervisors to determine who can arrive at the scene quickest and gain control of the situation. In the event of such an accident in camp or on incident roads on-site personnel shall take control until an **Operations Chief or Division Supervisor** arrive or **Local Law Enforcement** and or **Medical personnel** have assumed control.

The **Incident Dispatcher or Responsible Operations Individual** in charge of the accident will take immediate action to clear all radio traffic on the incident “Command Channel” by broadcasting **"Emergency Traffic Only"**, so that quick and proper coordination for handling the accident can take place.

Upon arrival at the accident scene, whoever has been designated to manage the situation (Ops or DIVS) should take immediate actions to:

- Obtain and facilitate EMT's to the scene – notify them you are in charge.
- Co-ordinate and facilitate appropriate transportation for injured.
- Move all unnecessary personnel from the accident scene.
- Secure the scene area and identify witnesses for investigation.

The **Safety Officer** will respond immediately to the scene of the accident to assist the Operations Chief or Division/Group Supervisor and shall be responsible for initiating the proper investigation and documentation by qualified personnel.

Immediately upon notification of an accident requiring emergency action the **Medical Unit Leader and Incident Commander** shall respond to incident communications.

Plans Chief, Logistics Chief, Finance Chief and **Information Officer** shall be notified and respond to incident communications in an appropriate manner that will not significantly affect ongoing operations.

The **Logistics Chief** shall attempt to control external communication, phones and radio. All information released from the incident shall be through the incident Information Officer with the approval of the Incident Commander.

The **Plans Chief** will make contact with the Agency Administrator who will in turn contact appropriate officials of the agency. If the accident involves a fatality, the Agency Administrator will contact the Sheriff's Office, the Coroner's Office, and the employing agency of the victim and will find out who will contact family members. The Plans Chief

will assure that an individual is assigned to document all communications regarding the accident.

At no time during the accident/fatality evacuation process will the name of the victim(s) be used.

The need of a *Critical Incident Stress Debriefing* for incident personnel will be discussed by the Core Team with input from the Medical Unit Leader, the Human Resource Specialist, and local / involved individuals. The Incident Commander will approve such debriefings.

Approved by:

Incident Commander

Date

KIDD'S Incident Management Team Cell Phone List

<i>Position</i>	<i>Name</i>	<i>Cell</i>
Command & General:		
ICT2	John Kidd	208-869-5979
ICDP	Tom Suwyn	435-864-7064
SOFR	Steve Davis	208-313-7835
SOF2	Ken Moore	435-313-2248
PIO2	Kirsten Cannon	702-595-2034
PIO2	Dick Birger	651-769-5952
OSC2	Tracy Swenson	435-553-5926
AOBD	Jill McCurdy	208-387-5737
OSC2	Colt Mortenson	970-756-4831
LSC2	Brent Crosland	435-253-2054
FSC2	Mike Taylor	435-592-0006
PSC2	Evan Boshell	435-691-9331
Operations:		
DIVS	Jason Kirks	435-259-9635
DIVS	Clint Coates	435-691-7272
DIVS	Brian Keating	435-259-9691
DIVS	Daren Turner	
ASGS	Chris Gamble	435-790-7095
ATGS	Dave McCormick	509-449-0804
HEB1	Don Nicolas	218-360-1816
ABRO	Darold Williams	386-752-0600
ATB MGR	Darrell Bohanon	386-758-9078
ATGS	Mike Melton	435-590-4712
Planning:		
RESL	Clark Tucker	435-823-6044
RESL	Renee Flanagan	435-368-5107
SITL	Lou Ballard	208-859-8359
GIST	Sarah Peterson	208-830-3104
FBAN	Chris Church	208-921-8656
DMOB	Linda Chappell	435-979-8356
READ	Carl Petrick	850-524-1233
CTSP	Heidi Little	801-618-5240
Logistics:		
COMT	Walter Warrick	208-313-4667
SPUL	Nan Coates	435-691-1218
FACL	Duane Stewart	435-616-8750
GSUL	Varian Allen	435-749-7164
EPQM	Art Partridge	435-979-4322
FUDL	Shannon Swann	702-271-6765
BCMG	Sean Stewart	435-616-2580
SECM	Randy Davis	435-691-3226
MEDL	Deb Lopez	435-406-1210
Finance:		
TIME	Stacy Heaps	435-287-7013
COST	Wendy Soper	435-590-4728
Trainees		
ICT2	Tracy Dunford	801-558-6508
AOBD	Kevin Greenhalgh	435-691-3771
DIVS	Tyko Isaacson	
DIVS	Bryan Brazzeal	435-680-3625
MEDL	Matt Payne	435-770-3391
OSC2	Brook Chadwick	801-541-6173

RESTAURANTS

Texas Roadhouse: 386-758-0074

Porterhouse Grill: 386-754-5907

Cracker Barrel: 386-755-5638 (Breakfast)

Applebee's: 386-752-7087

Blue Roof Grill: 386-719-2424

Pizza Hut: 386-752-3896

I-HOP : (Breakfast and Dinner)

Rates:

Breakfast = \$7.00

Lunch = \$11.00

Dinner = \$23.00

Tips will be paid by Government.

KIDD'S MANAGEMENT TEAM SUPPLY ORDER

Date & Time Order was Placed	Order # (DIVS + #)	Location & Time for Delivery (Division/LZ/DP/Lat Long)	Mode of delivery (Driven/Helo/DIVS to Pick up)	
Order received in Communications by (name):			Time:	
Order received in Supply by (name):			Time:	
Order received in Transportation by (name):			Time:	
Order received in Helibase by (name):			Time:	
Order shipped to line unit by (name): (Send this sheet to the line with the order)			Time:	
#	Item	Amount	Item	Amount
1.	Meals Breakfasts		26. Swivel ea.	
2.	Meals Lunches		27. Leadline ea.	
3.	Meals Dinners		28. Backpack Pump ea.	
4.	Meals MRE's/case		29. Slingable Blivet ea.	
5.	Water 5 gal. cubies		30. Folding Tank Size/ea.	
6.	Gatorade Case		31. Pumpkin Size/ea.	
7.	Batteries AA 1-Flat		32. Hose 1 ^{1/2} " / ft.	
8.	Batteries Specify Type		33. Hose 1" / ft.	
9.	Flagging (Specify type) # Roll		34. Hose 3/4" / ft.	
10.	Sleeping Bags ea		35. Reducer 1 ^{1/2} "X1"	
11.	Tarps/Plastic ea./roll		36. Reducer 1"X 3/4"	
12.	Parachute Cord roll		37. Gated "Y" 1 ^{1/2} "	
13.	Garbage Bags Box		38. Gated "Y" 1"	
14.	20 Man First Aid Kit ea.		39. Gated "Y" 3/4"	
15.	Coffee Kit w/propane ea.		40. Shut-off Valve 3/4"	
16.	Gas Raw		41. In-line Tee 1 ^{1/2} "X1"	
17.	Bar Oil Gal.		42. Nozzle 1 ^{1/2} "	
18.	2- cycle oil QT's		43. Nozzle 1"	
19.	Tool Shovel ea.		44. Nozzle 3/4"	
20.	Tool Pulaski ea.		45. Chainsaw Kit ea.	
21.	Tool Combi ea.		46. Mark 3 Pump Kit-Cache w/10 gal raw gas and 2 qts 2 cycle oil ea.	
22.	Tool Specify Type ea.			
23.	Fussee Case		47. Lightweight Pump Kit-Cache w/5 gal raw gas and 1 qt 2 cycle oil ea.	
24.	Drip Torches Full ea.			
25.	Drip Torch Mix 5 Gal.		48. Division Hose Lay Kit ea.	

GPS Datum: NAD 83

Team Ordering/ Timeline Process:

0630 – Morning Briefing, start of crew time.

1100 – Last call to change spike camp resource (food, fuel, etc) location.

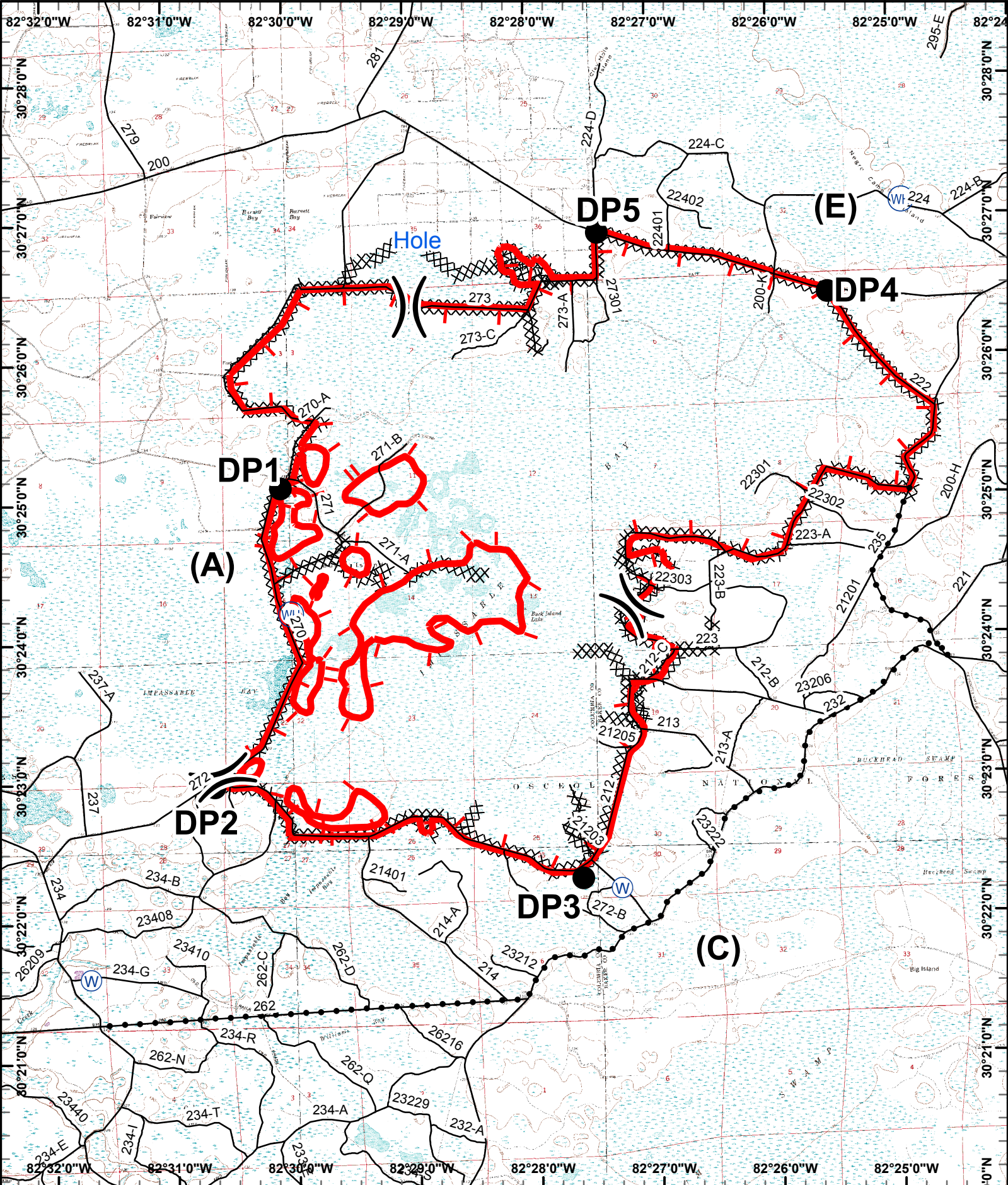
1500 – DIVS to have next day’s resource order ready for OPS.

- All crew level orders will be placed through DIVS.
- DIVS will place all orders through Communications Unit.
- All orders will be tracked using the process found on the front of form.

Division Hose Lay Kit Components



Item	NFES#	Quantity			
Hose 1½”	1239	1000’			
Hose 1”	1238	1000’			
Hose, ¾”	1016	500’			
Tee, 1 ½” – 1”	0731	5			
Nozzle, 1 ½”	0137	2			
Nozzle, 1”	0138	6			
Nozzle, ¾”	0136	12			
1 ½” Gated “Y”	0231	5			
1” Gated “Y”	2059	5			
¾” Gated “Y”	0272	6			
Shut off valve ¾”	0738	4			
Reducers, 1 ½” – 1”	0010	5			
Reducers, 1” – ¾”	0733	5			
Double Female 1”	0710	1			
Double Female 1 ½”	0857	1			

UNIT LOG	1. Incident Name	2. Date Prepared	3. Time Prepared
4. Unit Name/Designators	5. Unit Leader (Name and Position)		6. Operational Period
7. Personnel Roster Assigned			
Name	ICS Position		Home Base
8. Activity Log			
Time	Major Events		
9. Prepared by (Name and Position)			



- Division
- Helispot & Dipsite
- Drop Point
- Contingency Line
- Water Source
- Dozer Line and Improved Line
- Active Fire Perimeter

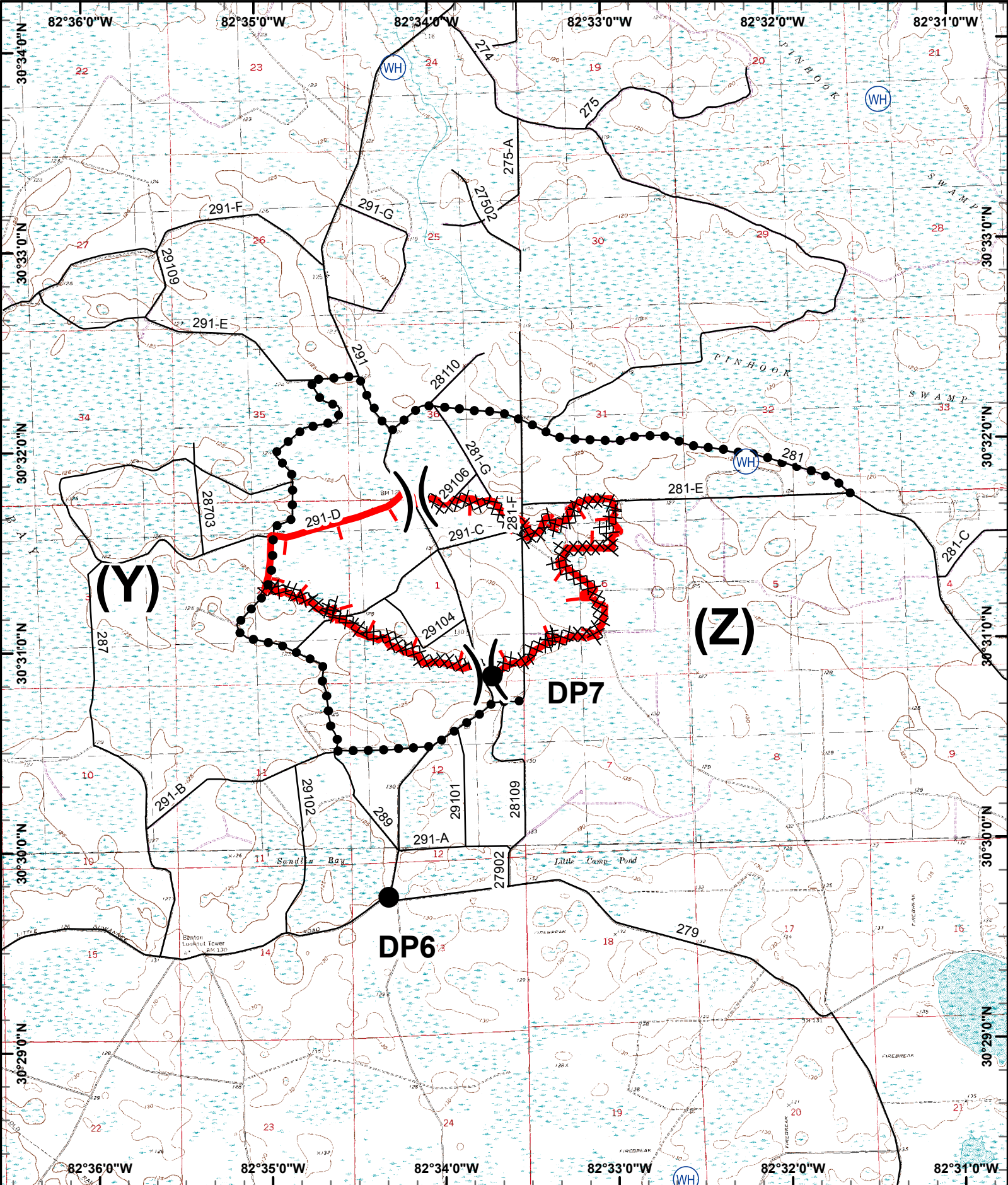
Created June 23, 2011 1500
s.peterson

0 0.5 1 Miles



Impassable Bay Fire
 June 24, 2011
 FL-FNF-011023
 11,305 Acres



	Division		Helispot & Dipsite	Created June 23, 2011 1500 s.peterson	
	Drop Point		Active Fire Perimeter		
	Water Source		Contingency Lines	 	
	Water Source		Dozer Line and Improved Line		

Kelly Rd Fire
 June 24, 2011
FL-FNF-004131
 825 Acres