

# IMPASSABLE BAY COMPLEX



SATURDAY, JUNE 25, 2011

0700-2100

P8F5SU

(0805)

GPS: NAD 83 - FORMAT : DD MM. MM

<b>INCIDENT OBJECTIVES</b>	1. Incident Name	2. Date Prepared	3. Time Prepared
	<b>Impassable Bay Complex</b>	<b>6/24/2011</b>	<b>2000</b>
4. Operational Period <b>6/25/2011 0700-1900</b>			
5. General Control Objectives For The Incident (Include Alternatives)			
<ol style="list-style-type: none"> <li>1. Provide for the safety of all incident personnel and the public, by adhering to all established guidelines and protocols.</li> <li>2. Keep fire within the Impassable Bay swamp by using Forest Service Roads 270, 200, 222, 235, 232, 212 and 272, and contain the Kelly Road Fire south of 281 road, east of 287, north of Suwannee road and minimize growth on private land.</li> <li>3. Manage the fire in a manner that is safe and cost effective for the values at risk.</li> <li>4. Maintain a positive working relationship with our State and Federal partners and adjacent landowners by initiating and maintaining timely communications. Work closely with designated landowner (GOAL) representatives and adjacent county/state agencies to ensure that fire suppression and incident on respective lands are fully coordinated.</li> <li>5. Together with the Florida Division of Forestry (DOF), coordinate fire management activities to maximize efficient use of wildland and structural resources on private and public lands including urban interface structures, timber, and sensitive habitats. Develop structure protection plans where necessary and minimize the impact to the private timber industry.</li> <li>6. Provide initial attack resources as directed in the Delegation of Authority.</li> <li>7. Prepare and implement a Rehabilitation Plan for current and future fires.</li> <li>8. Minimize adverse effects to Cultural Resources through minimally ground disturbing suppression tactics, recording and flagging sites and avoid if possible. Report unauthorized digging or collection of sites. Record location of dozer lines and/or mechanically improved roads for rehabilitation needs.</li> </ol>			
6. Weather Forecast For Period			
See attached weather			
7. General Safety Message			
<b>Drive defensively and with headlights on.</b> <b>Drink plenty of water and take frequent rest breaks.</b> <b>Ensure LCES is in place and known by all personnel.</b>			
8. ATTACHEMENTS (X IF ATTACHED)			
<input checked="" type="checkbox"/> Organization List - ICS 203 <input checked="" type="checkbox"/> Medical Plan - ICS 206 <input checked="" type="checkbox"/> Air Ops Summary _____ <input checked="" type="checkbox"/> Division Assignment Lists - ICS 204 <input checked="" type="checkbox"/> Incident Map <input checked="" type="checkbox"/> Fire weather forecast _____ <input checked="" type="checkbox"/> Communications Plan - ICS 205 <input checked="" type="checkbox"/> Traffic Plan <input checked="" type="checkbox"/> Fire Behavior forecast _____			
9. Prepared By (Planning Section Chief)		10. Approved By (Incident Commander)	
<b>EVAN BOSHELL</b>		<b>JOHN KIDD</b>	

<b>ORGANIZATION ASSIGNMENT LIST</b>		<b>9. Operations Section</b>	
1. Incident Name <b>IMPASSABLE BAY COMPLEX</b>		Field Operations	<b>Colt Mortenson Brook Chadwick (T)</b>
2. Date Prepared <b>June 25, 2011</b>		Planning Operations	<b>Tracy Swenson</b>
3. Time <b>2000</b>		<b>a. Branch I</b>	
4. Operational Period <b>DAY SHIFT JUNE 25, 2011 0700-2100</b>		Branch Director	
Position	Name	Division/Group	<b>IA Steve Little</b>
<b>5. Incident Commander</b>		Division/Group	<b>CONTINGENCY Brian Keating</b>
Incident Commanders	<b>John Kidd</b>	Division/Group	<b>A/B/C/D/E/F Jason Kirks Bryan Brazzeal(T)</b>
Deputy Incident Commander	<b>Tom Suwyn</b>	Division/Group	<b>Y-Kelly Clint Coates Tyko Isaacson(T)</b>
Incident Commander (T)	<b>Tracy Dunford</b>	Division/Group	<b>Z-Kelly Daren Turner</b>
Safety Officers	<b>Steve Davis/Ken Moore</b>	Division/Group	
Information Officer	<b>Dick Birger Kirsten Cannon</b>	Division/Group	
<b>6. Agency Representative</b>		<b>b. Branch II</b>	
Agency	Name	Branch Director	
FS – Forest Supervisor	<b>Susan Jeheber-Matthews</b>	Division/Group	
FS – Agency Admin. Rep.	<b>Ivan Green – DFR</b>	<b>c. Branch III</b>	
FS – Agency Admin. Rep.	<b>Ron Smith</b>	Branch Director	
Resource Advisor - FS	<b>Carl Petrick</b>	Division/Group	
Florida DOF	<b>Barry Coulliette</b>	<b>d. Air Operations Branch</b>	
<b>7. Planning Section</b>		Air Operations Branch Director	<b>Jill McCurdy</b>
Chief	<b>Evan Boshell</b>	AOBD(T)	<b>Kevin Greenhalgh</b>
Resources Unit	<b>Clark Tucker</b>	ABRO	<b>Darold Williams</b>
Resources Unit	<b>Renee Flanagan</b>	Air Tactical Group Supervisor	<b>Mike Melton</b>
Documentation Unit	<b>Clark Tucker</b>	Air Tactical Group Supervisor	<b>Dave McCormick</b>
Demob Unit	<b>Linda Chappell/Heidi Little</b>	Air Support Group Supervisor	<b>Chris Gamble</b>
Situation Unit	<b>Lou Ballard</b>	Helibase Manager T-1	<b>Don Nicholas</b>
FBAN	<b>Chris Church</b>	HEB2(T)	<b>Fred Alldridge</b>
IMET		ATB Mgr.	<b>Darrell Bohanon</b>
GIS Specialist	<b>Sarah Peterson</b>	<b>10. Finance Section</b>	
Training Specialist		Chief	<b>Mike Taylor</b>
Computer Specialist	<b>Heidi Little</b>	Time Unit	<b>Stacey Heaps</b>
Status/Check-in		Cost Unit	<b>Wendy Soper</b>
<b>8. Logistics Section</b>		Compensation/Claims Unit	
Chief	<b>Brent Crosland</b>	Procurement Unit Leader	
LSC2(T)	<b>Varian Allen</b>	Prepared by Resource Unit Leader	
Supply Unit	<b>Nan Coates</b>	<b>CLARK TUCKER</b>	
Facilities Unit	<b>Duane Stewart</b>		
Ground Support Unit	<b>Art Partridge</b>		
Communications Unit	<b>Walter Warrick</b>		
Medical Unit	<b>Deb Lopez</b>		
Ordering Mgr	<b>Randy Davis</b>		
Food Unit	<b>Shannon Swann</b>		

<b>Division Assignment List</b>		1. Branch		2. Division/Group <b>IA</b>			
3. Incident Name <b>IMPASSABLE BAY</b>		4. Operational Period <b>06/25/11 Saturday Day Shift 0700 - 2100</b>					
5. Operations Personnel							
Operations Chief	<b>COLT MORTENSON</b>	ICT4		<b>STEVE LITTLE</b>			
Operations Chief	<b>TRACY SWENSON</b>	Air Attack Supervisor		<b>MICHAEL A MELTON</b>			
Operations Chief	<b>BROOK CHADWICK(T)</b>	Safety Officer					
6. Resources Assigned this Period							
Strike Team/Task Force/ Resource Designator	Leader	Num of Pers.	Trans. Y/N	Drop Off PT./Time	Pick Up PT./Time		
ICT4	KOSCHAK	1	N	ICP/0700	OFFICE/2200		
ENG 461	MUNSON	2	N	ICP/0700	OFFICE/2200		
ENG E-4 (7/5)	BARNES	3	N	ICP/0700	OFFICE/2200		
ENG MARYLAND 5 (6/29)	WAGNER	2	N	ICP/0700	OFFICE/2200		
ENG E-18 (FS)		3	N	ICP/0700	OFFICE/2200		
TPL WILDLANDS 1 (7/5)	ROBERTS	2	N	ICP/0700	OFFICE/2200		
DOZER A2		1	N	ICP/0700	OFFICE/2200		
DOZER 57		1	N	ICP/0700	OFFICE/2200		
DOZER 59		1	N	ICP/0700	OFFICE/2200		
7. Control Operations PATROL ALL FIRES OTHER THAN IMPASSABLE AND KELLY. BE READY FOR IA ASSIGNMENTS							
8. Special Instructions INSURE LCES IS IN PLACE. DRIVE DEFENSIVELY WITH LIGHTS ON AT ALL TIMES.							
9. Division/Group Communications Summary							
Function	Frequency - RX	Frequency - TX	Tone	System	Channel	System	Channel
Command	173.0375	167.3250	136.5	NIFC	6		
Tactical Div/Group							
Logistics							
Air to Ground	168.1250	168.1250		NIFC	14		
Prepared by (Resource Unit Leader) <b>CLARK TUCKER</b>		Approved by (Planning Section Chief) <b>EVAN BOSHELL</b>			Date Prepared <b>06/24/11</b>		Time Prepared <b>0715</b>

<b>Division Assignment List</b>		1. Branch		2. Division/Group <b>CONTINGENCY</b>			
3. Incident Name <b>IMPASSABLE BAY</b>		4. Operational Period <b>06/25/11 Saturday Day Shift 0700 - 2100</b>					
5. Operations Personnel							
Operations Chief	<b>COLT MORTENSON</b>	Division/Group Supervisor	<b>BRIAN KEATING</b>				
Operations Chief	<b>TRACY SWENSON</b>	Air Attack Supervisor	<b>MICHAEL A MELTON</b>				
Operations Chief	<b>BROOK CHADWICK(T)</b>	Safety Officer					
6. Resources Assigned this Period							
Strike Team/Task Force/ Resource Designator	Leader	Num of Pers.	Trans. Y/N	Drop Off PT./Time	Pick Up PT./Time		
F350 & TRAILER - ROT	WOVELL	1	N	FIRE/0700	STATION/2100		
EXCAVATOR - ROT	CHAVARRIA	1	N	FIRE/0700	STATION/2100		
EXCAVATOR W/ FECON - ROT	TRAVIS	1	N	FIRE/0700	STATION/2100		
GRADER - ROT	HARVEY	1	N	FIRE/0700	STATION/2100		
DUMP TRUCK - ROT	FARRIS	1	N	FIRE/0700	STATION/2100		
LOWBOY & TRANS. - ROT	WORRELL	1	N	FIRE/0700	STATION/2100		
EXCAVATOR		1	N	FIRE/0700	STATION/2100		
MOWER		1	N	FIRE/0700	STATION/2100		
7. Control Operations CONTINUE PREP WORK ON ROAD SYSTEM. COORDINATE WITH COOPERATORS.							
8. Special Instructions INSURE LCES IS IN PLACE. COORDINATE WITH COOPERATORS.							
9. Division/Group Communications Summary							
Function	Frequency - RX	Frequency - TX	Tone	System	Channel	System	Channel
Command	173.0375	167.3250	136.5	NIFC	6		
Tactical Div/Group							
Logistics							
Air to Ground	168.1250	168.1250		NIFC	14		
Prepared by (Resource Unit Leader) <b>CLARK TUCKEFR</b>		Approved by (Planning Section Chief) <b>EVAN BOSHELL</b>			Date Prepared <b>06/24/11</b>		Time Prepared <b>0724</b>

<b>Division Assignment List</b>		1. Branch		2. Division/Group <b>A/B/C/D/E/F</b>			
3. Incident Name <b>IMPASSABLE BAY</b>		4. Operational Period <b>06/25/11 Saturday Day Shift 0700 - 2100</b>					
5. <b>Operations Personnel</b>							
Operations Chief	<b>COLT MORTENSON</b>	Division/Group Supervisor		<b>JASON KIRKS</b>			
Operations Chief	<b>TRACY SWENSON</b>	Air Attack Supervisor		<b>MICHAEL A MELTON</b>			
Operations Chief	<b>BROOK CHADWICK(T)</b>	Safety Officer		<b>ROBERT E BRITAIN</b>			
6. <b>Resources Assigned this Period</b>							
Strike Team/Task Force/ Resource Designator	Leader	Num of Pers.	Trans. Y/N	Drop Off PT./Time	Pick Up PT./Time		
DIVS(T)	BRYAN BRAZZEAL	1	N	ICP/0700	STATION/2100		
SOFR(T)	DANIEL JOHNSON	1	N	ICP/0700	STATION/2100		
EMT	MEREDITH LUND	1	N	ICP/0700	STATION/2100		
ENG 632 (6/26)	COOK	1	N	ICP/0700	STATION/2100		
ENG MAINE 6156 (7/7)	ARTHUR SLAVOIE	2	N	ICP/0700	STATION/2100		
ENG MAINE 6170 (7/7)	DUSTIN PICKERING	2	N	ICP/0700	STATION/2100		
ENG 2622 (6/30)	RINGER (6/30)	5	N	ICP/0700	STATION/2100		
BURNS HELITACK		3	N	ICP/0700	STATION/2100		
7. Control Operations PATROL AND MOPUP AS NEEDED.							
8. Special Instructions INSURE LCES IS IN PLACE. DRIVE DEFENSIVELY WITH LIGHTS ON AT ALL TIMES. DO NOT DRIVE IN DIVISION D UNLESS OPERATIONS CRITICAL.							
9. <b>Division/Group Communications Summary</b>							
Function	Frequency - RX	Frequency - TX	Tone	System	Channel	System	Channel
Command	173.0375	167.3250	136.5	NIFC	6		
Tactical Div/Group	168.0500	168.0500	136.5	NIFC	1		
Logistics							
Air to Ground	168.1250	168.1250		NIFC	14		
Prepared by (Resource Unit Leader) <b>CLARK TUCKER</b>		Approved by (Planning Section Chief) <b>EVAN BOSHELL</b>			Date Prepared <b>06/24/11</b>		Time Prepared <b>0729</b>

<b>Division Assignment List</b>		1. Branch		2. Division/Group <b>Y - Kelly</b>			
3. Incident Name <b>IMPASSABLE BAY</b>		4. Operational Period <b>06/25/11 Saturday Day Shift 0700 - 2100</b>					
<b>5. Operations Personnel</b>							
Operations Chief	<b>COLT MORTENSON</b>	Division/Group Supervisor		<b>CLINT C COATES</b>			
Operations Chief	<b>TRACY SWENSON</b>	Air Attack Supervisor		<b>MICHAEL A MELTON</b>			
Operations Chief	<b>BROOK CHADWICK</b>	Safety Officer					
<b>6. Resources Assigned this Period</b>							
Strike Team/Task Force/ Resource Designator	Leader	Num of Pers.	Trans. Y/N	Drop Off PT./Time	Pick Up PT./Time		
DIVS(T)	TYKO ISAACSON	1	N	ICP/0700	STATION/2100		
ENG E-17 (BRUSH 12) (7/1)	CORNETT	3	N	ICP/0700	STATION/2100		
ENG E-18 (BRUSH 74) (6/30)	ODEN	3	N	ICP/0700	STATION/2100		
KRASSEL HELITACK	MOAN	5	N	ICP/0700	STATION/2100		
CRW GRAND RONDE TRIBES	COLBY DRAKE	10	N	ICP/0700	STATION/2100		
W/T - 20 (7/4)		1	N	ICP/0700	STATION/2100		
<b>7. Control Operations</b> IMPROVE LINES AND MOPUP							
<b>8. Special Instructions</b> INSURE LCES IS IN PLACE. DRIVE DEFENSIVELY WITH LIGHTS ON AT ALL TIMES.							
<b>9. Division/Group Communications Summary</b>							
Function	Frequency - RX	Frequency - TX	Tone	System	Channel	System	Channel
Command	173.0375	167.3250	136.5	NIFC	6		
Tactical Div/Group	166.7250	166.7250	136.5	NIFC	4		
Logistics							
Air to Ground	166.6375	166.6375		NIFC	13		
Prepared by (Resource Unit Leader) <b>CLARK TUCKER</b>		Approved by (Planning Section Chief) <b>EVAN BOSHELL</b>			Date Prepared <b>06/24/11</b>		Time Prepared <b>2030</b>

Division Assignment List	1. Branch	2. Division/Group Z - Kelly
--------------------------	-----------	--------------------------------

3. Incident Name IMPASSABLE BAY	4. Operational Period 06/25/11 Saturday Day Shift 0700 - 2100
------------------------------------	--

5. Operations Personnel

Operations Chief	COLT MORTENSON	Division/Group Supervisor	DAREN TURNER
Operations Chief	TRACY SWENSON	Air Attack Supervisor	MICHAEL A MELTON
Operations Chief	BROOK CHADWICK(T)	Safety Officer	

6. Resources Assigned this Period

Strike Team/Task Force/ Resource Designator	Leader	Num of Pers.	Trans. Y/N	Drop Off PT./Time	Pick Up PT./Time
ENG WILDLAND WAREHOUSE (7/4)	CIRONE	3	N	ICP/0700	STATION/2100
ENG 35 (7/4)	ROBERTS	3	N	ICP/0700	STATION/2100
ENG 705 (7/1)	WESAW	3	N	ICP/0700	STATION/2100
ENG. BRUSH 2 (6/30)	TALBOT	3	N	ICP/0700	STATION/2100
W/T - 10 (7/4)		1	N	ICP/0700	STATION/2100
CRW GRAND RONDE TRIBES (7/3)		10	N	ICP/0700	STATION/2100

7. Control Operations  
IMPROVE LINES AND MOPUP.

8. Special Instructions  
INSURE LCES IS IN PLACE.  
DRIVE DEFENSIVELY WITH LIGHTS ON AT ALL TIMES.

9. Division/Group Communications Summary

Function	Frequency - RX	Frequency - TX	Tone	System	Channel	System	Channel
Command	173.0375	167.3250	136.5	NIFC	6		
Tactical Div/Group	166.7750	166.7750	136.5	NIFC	5		
Logistics							
Air to Ground	166.6375	166.6375		NIFC	13		

Prepared by (Resource Unit Leader) CLARK TUCKER	Approved by (Planning Section Chief) EVAN BOSHELL	Date Prepared 06/24/11	Time Prepared 0746
--	--	---------------------------	-----------------------





**ICS 220 - Continued**

<b>10. TASK/ MISSION/ ASSIGNMENT (Type/ function includes: Air Tactical, Retardant, Recon, Personnel Transport, Bucket Operations, SAR, etc.)</b>					
<b>TYPE/FUNCTION</b>	<b>PRIORITY</b>	<b>NAME OF PERSONNEL OR CARGO (If applicable) or instructions for tactical aircraft</b>	<b>MISSION START</b>	<b>FLY FROM</b>	<b>FLY TO</b>
Air Tactical		Coverage by ATGS as needed or requested by OPS.	0900	ATB	Fire
Retardant Drops		Requested by DIVS through ATGS and approved by OPS.	1000	ATB	Fire
Water Drops		Requested by DIVS through ATGS and approved by OPS.	0900	Helibase	Fire
Medical Transport		Crew Boss contact DIVS; DIVS contact ATGS for medical evacuations/transport.	As Requested	Helibase	Fire
Recon		As requested and approved by OPS.	As Requested	Helibase	Fire
Initial Attack		As directed by OPS.			

<b>Helibase, Dip Sites, Pick Up Sites, etc.</b>	<b>Helispots, Sling Spots, Repeater Sites, etc.</b>
Helibase 30° 11' 13" x 82° 34' 27"	

**VI. Wind Restrictions.**

The capability to fly a helicopter in excessive wind conditions varies considerably with the weight class of the helicopter and the degree of turbulence associated with the wind. If the helicopter flight manual or the helicopter operator's policy does not set lower limits, the following shall be used. These limits may be further restricted at the discretion of the Pilot or other air operations personnel. Limitations are as follows:

**FLIGHT ABOVE GROUND LEVEL  
FLIGHT PERMITTED IN WINDS LESS THAN / MAXIMUM GUST SPREAD (in knots)**

<b>Flights More Than 500' AGL</b>		
<b>Type 1 Helicopters</b>	<b>Type 2 Helicopters</b>	<b>Type 3 Helicopters</b>
50 kts (43 mph) / Gusts: N/A	50 kts (43 mph) / Gusts: N/A	50 kts (43 mph) / Gusts: N/A
<b>Flights Less Than 500' AGL</b>		
<b>Type 1 Helicopters</b>	<b>Type 2 Helicopters</b>	<b>Type 3 Helicopters</b>
40 kts (35 mph) / 15 (13 mph) kts	40 kts (35 mph) / 15 (13 mph) kts	30 kts (26 mph)/15 kts (13 mph)

Approved by: /s/ Jill McCurdy, AOBD

FIRE WEATHER PLANNING FORECAST FOR NORTHEAST FLORIDA/SOUTHEAST GEORGIA  
 NATIONAL WEATHER SERVICE JACKSONVILLE FL  
 216 PM EDT FRI JUN 24 2011

**.DISCUSSION...**A SURFACE TROUGH WILL LINGER OVER THE SOUTHEAST REGION THROUGH THE WEEKEND BRINGING AN INCREASE IN MOISTURE AND HIGHER CHANCES OF MAINLY AFTERNOON AND EVENING SHOWERS AND THUNDERSTORMS.RELATIVE HUMIDITIES ARE EXPECTED TO REMAIN ABOVE CRITICAL VALUES. WEST TO SOUTHWEST PREVAILING FLOW IS EXPECTED WITH SUSTAINED SPEEDS LESS THAN 15 MPH. WINDS WILL BECOME SSE NEAR THE ATLANTIC COAST EACH AFTERNOON AND EVENING. THE EAST COAST SEA BREEZE WILL INCREASE WIND SPEEDS TO NEAR 15 MPH AT TIMES. WINDS WILL ALSO BE HIGHER AND GUSTY NEAR THUNDERSTORMS. OUTFLOWS FROM THUNDERSTORMS CAN PRODUCE SUDDEN SHIFTS IN WIND DIRECTION.

FLZ020>023-030>032-035>037-250930-  
 HAMILTON-SUWANNEE-COLUMBIA-BAKER-UNION-BRADFORD-CLAY-GILCHRIST-  
 ALACHUA-PUTNAM-  
 216 PM EDT FRI JUN 24 2011

	TONIGHT	SAT	SAT NIGHT	SUN
CLOUD COVER	MCLDY	PCLDY	PCLDY	PCLDY
CHANCE PRECIP (%)	30	50	20	40
WEATHER TYPE	TSTMS	TSTMS	TSTMS	TSTMS
TEMP	70	94	70	96
RH (%)	100	42	100	44
20FT WND MPH (AM)		W 3		LGT/VAR
20FT WND MPH (PM)	W 3	SW 5	LGT/VAR	W 5
PRECIP DURATION	1	2	1	1
PRECIP BEGIN	8 PM	8 AM	CONTINUING	8 AM
PRECIP END	2 AM	CONTINUING	2 AM	CONTINUING
PRECIP AMOUNT	0.09	0.18	0.04	0.10
LAL	3	3	3	3
MIXING HEIGHT(FT-AGL)	200	6300	200	7500
TRANSPORT WND (MPH)	SW 5	W 8	W 5	W 9
DISPERSION INDEX	1	27	1	31
MAX LVORI	10		10	

REMARKS...NONE.

.FORECAST FOR DAYS 3 THROUGH 7...

.MONDAY...MOSTLY CLOUDY. A 40 PERCENT CHANCE OF SHOWERS AND THUNDERSTORMS. LOWS IN THE LOWER 70S. HIGHS IN THE MID 90S. SOUTHEAST WINDS 5 TO 10 MPH.

.TUESDAY...MOSTLY CLOUDY. A 40 PERCENT CHANCE OF SHOWERS AND THUNDERSTORMS. LOWS IN THE LOWER 70S. HIGHS IN THE LOWER 90S. EAST WINDS 5 TO 10 MPH.

.WEDNESDAY THROUGH FRIDAY...MOSTLY CLOUDY. A 40 PERCENT CHANCE OF SHOWERS AND THUNDERSTORMS. LOWS IN THE LOWER 70S. HIGHS IN THE LOWER 90S. SOUTHEAST WINDS 5 TO 10 MPH.

# FIRE BEHAVIOR FORECAST

FORECAST NUMBER: 7	TYPE OF FIRE: Wildland Fire
FIRE NAME: Impassable Bay Complex	OPERATIONAL PERIOD: 25 June 2011
DATE ISSUED: 24 June 2011	TIME ISSUED: 1930
UNIT: Osceola NF Olustee Ranger District	SIGNED: Chris Church – FBAN

## INPUTS

**WEATHER SUMMARY:** ....Synopsis...upper ridge continues to weaken over S central Florida with trough over E 1/3 of the lower 48. Short term...diurnal convection will continue with probability of precipitation (pops) just above normal over S 1/3 of the area due to location of moisture axis. N zones will see pops just below normal due to proximity of drier air. Storm motion will be slow thru this period...so portions of NE Florida may end up with some much needed rainfall. Temps will be near to slightly above normal with the coolest temps likely over the S due to cloud cover and precipitation.

### FUELS:

The KBDI for the fire area is still above the 97<sup>th</sup> percentile and near records for seasonal average. The most recent ERC measured for this area shows the ERC dropping to the 70<sup>th</sup> percentile due to rain received. Fuels are a mixed southern rough element including slash pine and bald cypress with scattered longleaf pine. The understory consists of palmetto, gallberry, and mixed varieties of brush. Areas with timber contain a moderate dead and down component with higher levels of dead and downed in various locations. Most areas of the fire area have brush (fuel model 7) that will carry fire especially with a wind component. Live fuel moistures are extremely low, and will be listed as soon as they can be verified by local personnel.

## FIRE BEHAVIOR

## OUTPUTS

### GENERAL:

Conditions should moderate again, as probable cloud cover and showers move into the fire area for the third consecutive day. RH 42%, temp at 94, and winds 20 foot, W 3 mph in the morning and SW at 5 mph afternoon. Fire behavior should be smoldering, and creeping, with rare intermittent short lived torching, as any T-cells increase winds over your fire. Dispersion index will be low at 27. Movement requires a wind component and torching may spot into adjacent fuels. Smoke may impact roaded areas in the early morning hours and as fire activity increases.

Fuel Model	ROS (ch/hr)		Flame Length (ft)		PIG	Spot_Dist
	Head	Backing	Head	Backing		
7- Southern Rough	5	3	2	1	50%	.1 mile
TU2 Timber	3	2	1	1	50%	.1 mile

Fire behavior predictions are for the hottest and driest period of the day.

**SPECIFIC: Impassable Bay** The fire area will continue to smolder and creep early in the day between Drop Point 1 and Drop Point 2 and in the unburned islands in the interior, but could spread through torching especially later in the day with any significant thunderstorm wind component. Spotting today should minimize due to higher RH's and with the chance of rain again today. Brush and downed logs will be less of a factor today in fire spread until our large diameter fuels get a days respite from any moisture. The amount of unburned fuels close to the line in Division A and C should be monitored closely.

**Kelly Road** This fire is a drier site and is burning in 20 year old rough. There is quite a bit of organic material due to lack of fire, and falling trees could be an issue as organic material has burned out around the root systems. Fire behavior will be smoldering and creeping in the am, with rare intermittent torching possible in the afternoon with any significant downdraft winds. Spotting should be minimized by higher RH's and the chance of rain again today.

### AIR OPERATIONS:

Smoke inversions should be negligible today on the Kelly Road Fire, and minimal on the Impassable Bay Fire. Air ops should be smooth early in the day until any sea breezes or thunderstorms infiltrate the area in the afternoon. Chance of rain today could limit air operations due to visibility and potential lightning hazards (LAL3).

## SAFETY

Unsettled weather today will again bring a chance of lightning.

Watch for wind shifts with afternoon sea breeze influences and around any thunderstorms!

INCIDENT RADIO COMMUNICATIONS PLAN		1. Incident Name		2. Date/ Time Prepared		3. Operational Period Date/Time	
		Impassable Bay Complex		06-24-2011 2030		06-25-2011 0730 - 2200	
4. Basic Radio Channel Utilization							
Radio Type/Cache	Channel	Function	Frequency/Tone		Mode	Assignment	Remarks
King NIFC	1	Tac1	RX 168.0500 TX 168.0500	Tone 136.5 Tone 136.5	Narrow	DIV A - B - C - D - E - F	Post Human Repeaters where Needed
King NIFC	2	Tac 2	RX 168.2000 TX 168.2000	Tone 136.5 Tone 136.5	Narrow	NIGHT SHIFT	Post Human Repeaters where Needed
King NIFC	3	Tac3	RX 168.6000 TX 168.6000	Tone 136.5 Tone 136.5	Narrow	UNASSIGNED	Post Human Repeaters where Needed
King NIFC	4	Tac 4	RX 166.7250 TX 166.7250	Tone 136.5 Tone 136.5	Narrow	DIV Y	Post Human Repeaters where Needed
King NIFC	5	Tac 5	RX 166.7750 TX 166.7750	Tone 136.5 Tone 136.5	Narrow	DIV Z	Post Human Repeaters where Needed
King NIFC	6	<b>CMD</b>	RX 173.0375 TX 167.3250	Tone None Tone 136.5	Narrow	<b>COMMAND WEST</b>	Linked to Channel 7
King NIFC	7	<b>CMD</b>	RX 166.6125 TX 168.4000	Tone 136.5	Narrow	<b>COMMAND EAST</b>	Linked to Channel 6
King R 8	8	R - 8 Fire	RX 169.9000 TX 169.9000	Tone 136.5	Narrow	Local IA	Post Human Repeaters where Needed
King DOF 190	9	DOF 190	RX 151.2725 TX 151.2725	Tone None Tone None	Narrow	Primary IA for off Forest	Post Human Repeaters where Needed
King DOF 191	10	DOF 191	RX 151.2875 TX 151.2875	Tone None Tone None	Narrow	Local IA	Post Human Repeaters where needed
King NIFC	11	FOREST	RX 171.5500 TX 172.3750	Tone 167.9	Narrow	Olustee Forest Repeater	Forest Dispatch
King NIFC	12	FOREST	RX 171.5500 TX 172.3750	Tone 146.2	Narrow	Eddy Forest Repeater	Forest Dispatch
King NIFC	13	A/G 1	RX 166.6375 TX 166.6375		Narrow	Air to Ground Primary	AIR to Ground Primary Div Y & Z
King NIFC	14	A/G 2	RX 168.1250 TX 168.1250		Narrow	Air to Ground Secondary	Air to Ground Secondary A/B/C/D/E/F - IA
King NIFC	15	White	RX 154.2800 TX 154.2800	Tone None Tone None	Narrow	Local IA	
King NIFC	16	Air Guard	RX 168.6250 TX 168.6250	Tone 110.9	Narrow	Air Guard	Emergency Use Only Tone 110.9

5. Prepared by (Communications Unit) Walter Warrick COML

<b>MEDICAL PLAN</b>	1. Incident Name	2. Date Prepared	3. Time Prepared	4. Operational Period				
	Impassable Bay Complex	6/24/2011	2000	6/25/2011				
<b>5. Incident Medical Aid Station</b>								
Medical Aid Stations	Location						Paramedics	
							Yes	No
<b>ICP</b>	<b>OLUSTEE, FLORIDA</b>						<b>X</b>	
<b>6. Transportation</b>								
A. Ambulance Services								
Name	Address			Phone		Paramedics		
						Yes	No	
<b>BAKER COUNTY EMS</b>	<b>MACCLENNY</b>			<b>904-259-2861</b>		<b>X</b>		
<b>COLUMBIA CO. EMS</b>	<b>LAKE CITY</b>			<b>904-758-9111</b>		<b>X</b>		
B. Incident Ambulances								
Name	Location						Paramedics	
							Yes	No
<b>7. Hospitals</b>								
Name	Address	Travel Time		Phone	Helipad		Burn Center	
		Air	Grnd		Yes	No	Yes	No
<b>LAKE SHORE</b>	<b>LAKE CITY</b>	<b>15 MIN</b>	<b>20 MIN.</b>	<b>386-292-8001</b>	<b>X</b>			<b>X</b>
<b>URGENT CARE</b>	<b>LAKE CITY</b>	<b>15 MIN</b>	<b>20M IN</b>	<b>386-758-2944</b>		<b>X</b>		<b>X</b>
<b>ED FRASER MEM.</b>	<b>MACCLENNY</b>	<b>15 MIN</b>	<b>20 MIN</b>	<b>904-259-3151</b>	<b>X</b>			<b>X</b>
<b>UNIV.MED. JACKSONVILLE</b>	<b>JACKSONVILLE</b>	<b>20 MIN</b>	<b>45 MIN.</b>	<b>904-549-4165</b>	<b>X</b>			<b>X</b>
<b>SHANDS HOSPITAL</b>	<b>GAINESVILLE FL</b>	<b>30 MIN</b>	<b>1 HRS</b>	<b>352-494-5616</b>	<b>X</b>		<b>X</b>	
<b>LIFE FLIGHT</b>	<b>JACKSONVILLE</b>	<b>30 MIN</b>		<b>904-202-2136</b>	<b>X</b>			
<b>8. Medical Emergency Procedures</b>								
<p>Upon occurrence of a “<b>MAJOR</b>” medical or accident involving significant injury on the fireline. The <b>nearest fireline Supervisor or Leader</b> on the scene will be in charge and will clear all radio traffic on the incident “Command” Channel. The command channel will be used to coordinate response – do <u>not</u> use names.</p> <ul style="list-style-type: none"> <li>o Obtain and facilitate nearest EMT’s to the scene, request medical unit response – DIVS in charge of scene.</li> <li>o Coordinate and facilitate appropriate transportation for injured with Medical Unit – EMT in charge of patient(s).</li> <li>o Nature of problem: # injured; Condition and Vitals; Location (GPS Coordinates)</li> <li>o Remove all unnecessary personnel from the accident scene – notify SOFR.</li> <li>o Secure the scene area and identify witnesses for later investigation – keep a log.</li> <li>o Use emergency form on back of medical plan to report to communications.</li> </ul> <p style="text-align: center;"><b>Life safety is the Number 1 Priority on this Incident</b></p>								
9. Prepared by (Medical Unit Leader)					10. Reviewed by (Safety Officer)			
<b>DEB LOPEZ      MATT PAYNE(T)</b>					<b>STEVE DAVIS</b>			

# COMMUNICATION FOR INJURY/MEDICAL EMERGENCY

Do not use the name of the Injured individual over the radio. In the event of a minor injury, so state when relaying the information so a false sense of urgency is not. The Medical Unit Leader is to be notified in all injury situations.

Date: \_\_\_\_\_ Time: \_\_\_\_\_ Division \_\_\_\_\_

Location: \_\_\_\_\_

On Scene Point of Contact (Name & Position): \_\_\_\_\_ Radio Frequency \_\_\_\_\_

Medical personnel on site (name) \_\_\_\_\_

Type of Injury: \_\_\_\_\_

Sex \_\_\_\_\_ Age \_\_\_\_\_

Medical Injury \_\_\_\_\_ or Illness \_\_\_\_\_ Life Threatening Yes \_\_\_\_\_ No \_\_\_\_\_

Patient Condition- Critical \_\_\_\_\_ Serious \_\_\_\_\_ Minor \_\_\_\_\_ Conscious Yes \_\_\_\_\_ No \_\_\_\_\_

Additional medical equipment or personnel needed? (Type and Quantity) \_\_\_\_\_

Is air transportation needed: Yes \_\_\_\_\_ No \_\_\_\_\_ Can Patient sit up Yes \_\_\_\_\_ No \_\_\_\_\_ Weight \_\_\_\_\_

Location LAT \_\_\_\_\_ LONG \_\_\_\_\_ Drop Point \_\_\_\_\_

Patient Home Unit \_\_\_\_\_ Agency \_\_\_\_\_

Assessment BP \_\_\_\_\_ Pulse \_\_\_\_\_ Level of Consciousness \_\_\_\_\_ Skin \_\_\_\_\_

Difficulty Breathing Yes \_\_\_\_\_ No \_\_\_\_\_

On going Assessment- Document as they occur – on Scene personnel,

## **Accident Incident within an Incident**

The **Incident Commander** is responsible for overall action in case of a serious accident.

Upon occurrence of a “**MAJOR**” accident involving significant injury or fatality on the fireline, the highest qualified person on scene shall take control of the situation until the nearest **Division Supervisor** arrives on scene to assume control. Immediate and clear communication must be established between Operations and Division/Group Supervisors to determine who can arrive at the scene quickest and gain control of the situation. In the event of such an accident in camp or on incident roads on-site personnel shall take control until an **Operations Chief or Division Supervisor** arrive or **Local Law Enforcement** and or **Medical personnel** have assumed control.

The **Incident Dispatcher or Responsible Operations Individual** in charge of the accident will take immediate action to clear all radio traffic on the incident “Command Channel” by broadcasting **"Emergency Traffic Only"**, so that quick and proper coordination for handling the accident can take place.

Upon arrival at the accident scene, whoever has been designated to manage the situation (Ops or DIVS) should take immediate actions to:

- Obtain and facilitate EMT's to the scene – notify them you are in charge.
- Co-ordinate and facilitate appropriate transportation for injured.
- Move all unnecessary personnel from the accident scene.
- Secure the scene area and identify witnesses for investigation.

The **Safety Officer** will respond immediately to the scene of the accident to assist the Operations Chief or Division/Group Supervisor and shall be responsible for initiating the proper investigation and documentation by qualified personnel.

Immediately upon notification of an accident requiring emergency action the **Medical Unit Leader and Incident Commander** shall respond to incident communications.

**Plans Chief, Logistics Chief, Finance Chief** and **Information Officer** shall be notified and respond to incident communications in an appropriate manner that will not significantly affect ongoing operations.

The **Logistics Chief** shall attempt to control external communication, phones and radio. All information released from the incident shall be through the incident Information Officer with the approval of the Incident Commander.

The **Plans Chief** will make contact with the Agency Administrator who will in turn contact appropriate officials of the agency. If the accident involves a fatality, the Agency Administrator will contact the Sheriff's Office, the Coroner's Office, and the employing agency of the victim and will find out who will contact family members. The Plans Chief



will assure that an individual is assigned to document all communications regarding the accident.

At no time during the accident/fatality evacuation process will the name of the victim(s) be used.

The need of a *Critical Incident Stress Debriefing* for incident personnel will be discussed by the Core Team with input from the Medical Unit Leader, the Human Resource Specialist, and local / involved individuals. The Incident Commander will approve such debriefings.

**Approved by:**

\_\_\_\_\_  
**Incident Commander**

\_\_\_\_\_  
**Date**

KIDD'S Incident Management Team Cell Phone List

<i>Position</i>	<i>Name</i>	<i>Cell</i>
<b>Command &amp; General:</b>		
ICT2	John Kidd	208-869-5979
ICDP	Tom Suwyn	435-864-7064
SOFR	Steve Davis	208-313-7835
SOF2	Ken Moore	435-313-2248
PIO2	Kirsten Cannon	702-595-2034
PIO2	Dick Birger	651-769-5952
OSC2	Tracy Swenson	435-553-5926
AOBD	Jill McCurdy	208-387-5737
OSC2	Colt Mortenson	970-756-4831
LSC2	Brent Crosland	435-253-2054
FSC2	Mike Taylor	435-592-0006
PSC2	Evan Boshell	435-691-9331
<b>Operations:</b>		
DIVS	Jason Kirks	435-259-9635
DIVS	Clint Coates	435-691-7272
DIVS	Brian Keating	435-259-9691
DIVS	Daren Turner	
ASGS	Chris Gamble	435-790-7095
ATGS	Dave McCormick	509-449-0804
HEB1	Don Nicolas	218-360-1816
ABRO	Darold Williams	386-752-0600
ATB MGR	Darrell Bohanon	386-758-9078
ATGS	Mike Melton	435-590-4712
<b>Planning:</b>		
RESL	Clark Tucker	435-823-6044
RESL	Renee Flanagan	435-368-5107
SITL	Lou Ballard	208-859-8359
GIST	Sarah Peterson	208-830-3104
FBAN	Chris Church	208-921-8656
DMOB	Linda Chappell	435-979-8356
READ	Carl Petrick	850-524-1233
CTSP	Heidi Little	801-618-5240
<b>Logistics:</b>		
COMT	Walter Warrick	208-313-4667
SPUL	Nan Coates	435-691-1218
FACL	Duane Stewart	435-616-8750
GSUL	Varian Allen	435-749-7164
EPQM	Art Partridge	435-979-4322
FUDL	Shannon Swann	702-271-6765
BCMG	Sean Stewart	435-616-2580
SECM	Randy Davis	435-691-3226
MEDL	Deb Lopez	435-406-1210
<b>Finance:</b>		
TIME	Stacy Heaps	435-287-7013
COST	Wendy Soper	435-590-4728
<b>Trainees</b>		
ICT2	Tracy Dunford	801-558-6508
AOBD	Kevin Greenhalgh	435-691-3771
DIVS	Tyko Isaacson	
DIVS	Bryan Brazzeal	435-680-3625
MEDL	Matt Payne	435-770-3391
OSC2	Brook Chadwick	801-541-6173

## **RESTAURANTS**

**Texas Roadhouse: 386-758-0074**

**Porterhouse Grill: 386-754-5907**

**Cracker Barrel: 386-755-5638 (Breakfast)**

**Applebee's: 386-752-7087**

**Blue Roof Grill: 386-719-2424**

**Pizza Hut: 386-752-3896**

**I-HOP : (Breakfast and Dinner)**

**Rates:**

**Breakfast = \$7.00**

**Lunch = \$11.00**

**Dinner = \$23.00**

**Tips will be paid by Government.**

## KIDD'S MANAGEMENT TEAM SUPPLY ORDER

Date & Time Order was Placed	Order # (DIVS + #)	Location & Time for Delivery (Division/LZ/DP/Lat Long)	Mode of delivery (Driven/Helo/DIVS to Pick up)	
Order received in Communications by (name):			Time:	
Order received in Supply by (name):			Time:	
Order received in Transportation by (name):			Time:	
Order received in Helibase by (name):			Time:	
Order shipped to line unit by (name): (Send this sheet to the line with the order)			Time:	
#	Item	Amount	Item	Amount
1.	Meals Breakfasts		26. Swivel ea.	
2.	Meals Lunches		27. Leadline ea.	
3.	Meals Dinners		28. Backpack Pump ea.	
4.	Meals MRE's/case		29. Slingable Blivet ea.	
5.	Water 5 gal. cubies		30. Folding Tank Size/ea.	
6.	Gatorade Case		31. Pumpkin Size/ea.	
7.	Batteries AA 1-Flat		32. Hose 1 <sup>1/2</sup> " / ft.	
8.	Batteries Specify Type		33. Hose 1" / ft.	
9.	Flagging (Specify type) # Roll		34. Hose 3/4" / ft.	
10.	Sleeping Bags ea		35. Reducer 1 <sup>1/2</sup> "X1"	
11.	Tarps/Plastic ea./roll		36. Reducer 1"X 3/4"	
12.	Parachute Cord roll		37. Gated "Y" 1 <sup>1/2</sup> "	
13.	Garbage Bags Box		38. Gated "Y" 1"	
14.	20 Man First Aid Kit ea.		39. Gated "Y" 3/4"	
15.	Coffee Kit w/propane ea.		40. Shut-off Valve 3/4"	
16.	Gas Raw		41. In-line Tee 1 <sup>1/2</sup> "X1"	
17.	Bar Oil Gal.		42. Nozzle 1 <sup>1/2</sup> "	
18.	2- cycle oil QT's		43. Nozzle 1"	
19.	Tool Shovel ea.		44. Nozzle 3/4"	
20.	Tool Pulaski ea.		45. Chainsaw Kit ea.	
21.	Tool Combi ea.		46. Mark 3 Pump Kit-Cache w/10 gal raw gas and 2 qts 2 cycle oil ea.	
22.	Tool Specify Type ea.			
23.	Fussee Case		47. Lightweight Pump Kit-Cache w/5 gal raw gas and 1 qt 2 cycle oil ea.	
24.	Drip Torches Full ea.			
25.	Drip Torch Mix 5 Gal.		48. Division Hose Lay Kit ea.	

**GPS Datum: NAD 83**

**Team Ordering/ Timeline Process:**

0630 – Morning Briefing, start of crew time.

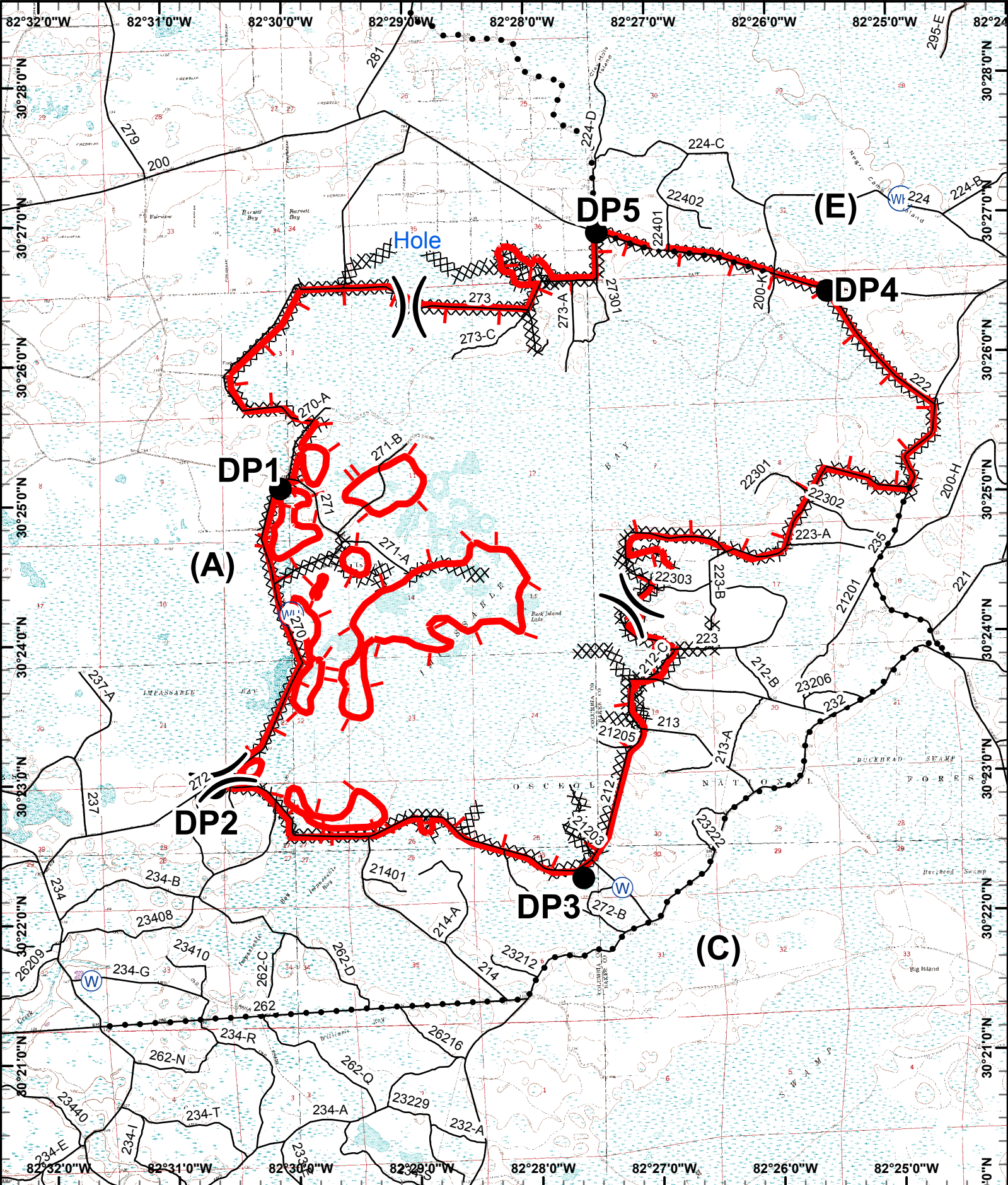
1100 – Last call to change spike camp resource (food, fuel, etc) location.

1500 – DIVS to have next day’s resource order ready for OPS.

- All crew level orders will be placed through DIVS.
- DIVS will place all orders through Communications Unit.
- All orders will be tracked using the process found on the front of form.



<b>Division Hose Lay Kit Components</b>			
Item	NFES#	Quantity	
Hose 1½”	1239	1000’	
Hose 1”	1238	1000’	
Hose, ¾”	1016	500’	
Tee, 1 ½” – 1”	0731	5	
Nozzle, 1 ½”	0137	2	
Nozzle, 1”	0138	6	
Nozzle, ¾”	0136	12	
1 ½” Gated “Y”	0231	5	
1” Gated “Y”	2059	5	
¾” Gated “Y”	0272	6	
Shut off valve ¾”	0738	4	
Reducers, 1 ½” – 1”	0010	5	
Reducers, 1” – ¾”	0733	5	
Double Female 1”	0710	1	
Double Female 1 ½”	0857	1	

UNIT LOG	1. Incident Name	2. Date Prepared	3. Time Prepared
4. Unit Name/Designators	5. Unit Leader (Name and Position)		6. Operational Period
7. Personnel Roster Assigned			
Name	ICS Position		Home Base
8. Activity Log			
Time	Major Events		
9. Prepared by (Name and Position)			



- Division
- Helispot & Dipsite
- Drop Point
- Active Fire Perimeter
- Contingency Line
- Water Source
- Dozer Line and Improved Line

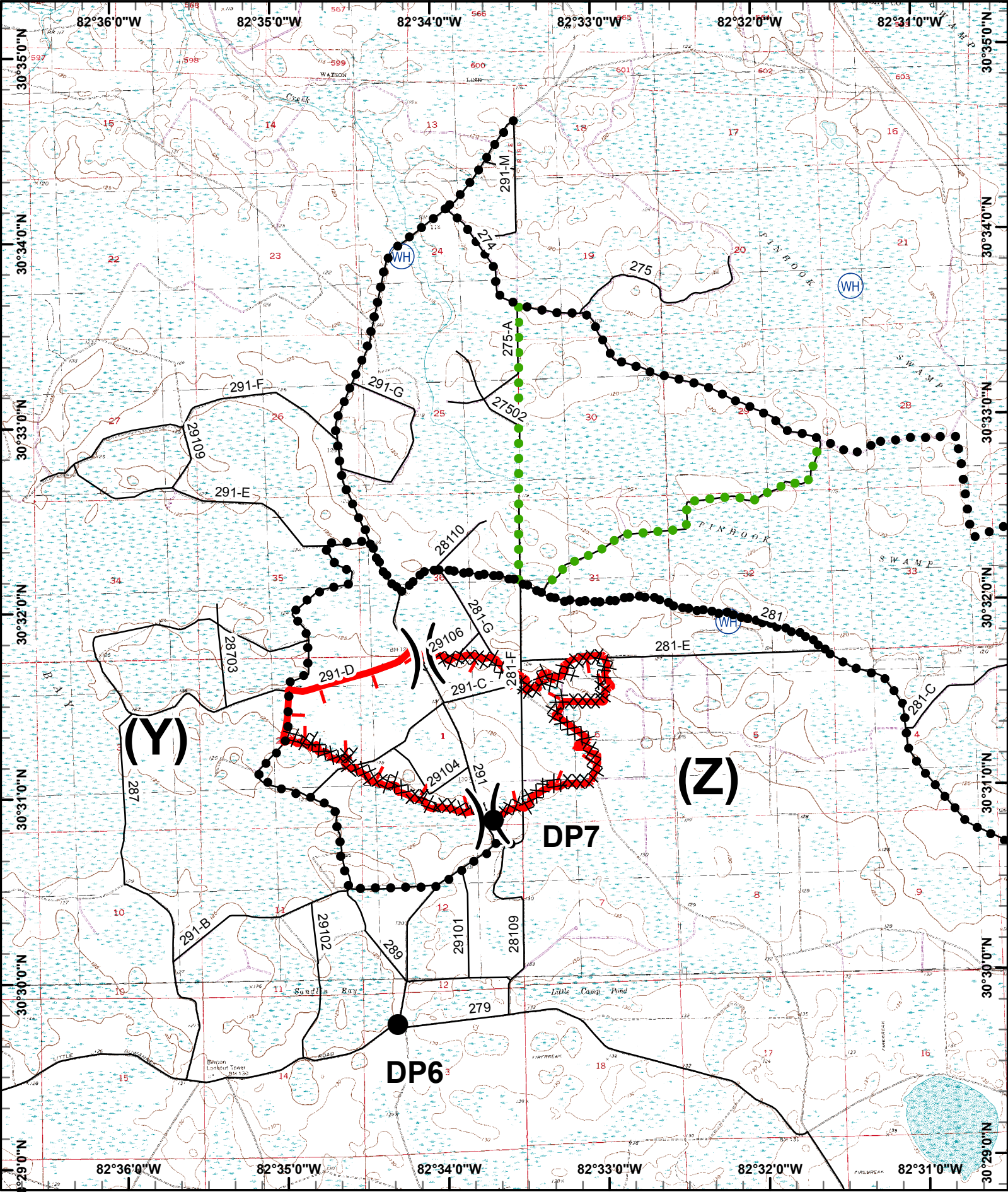
Created June 24, 2011 1200  
s.peterson

0 0.5 1 Miles



**Impassable Bay Fire**  
 June 25, 2011  
 FL-FNF-011023  
 11,305 Acres



	Division		Helispot & Dipsite	Created June 24, 2011 1200 s.peterson	
	Drop Point		Active Fire Perimeter		
	Water Source		Contingency Lines	0    0.35    0.7 Miles	
	Dozer Line and Improved Line			<b>Kelly Rd Fire</b> <b>June 25, 2011</b> <b>FL-FNF-004131</b> 825 Acres	