

# IMPASSABLE BAY COMPLEX



SUNDAY, JUNE 26, 2011

DAY: 0700-2100

AND

SWING: 1200 - 6/27@0200

P8F5HU

(0805)

GPS: NAD 83 - FORMAT : DD MM. MM

<b>INCIDENT OBJECTIVES</b>	1. Incident Name	2. Date Prepared	3. Time Prepared
	<b>Impassable Bay Complex</b>	<b>6/25/2011</b>	<b>2000</b>
4. Operational Period <b>6/26/2011 0700-1900 &amp; Swing Shift: 1200 to 6/27 @0200</b>			
5. General Control Objectives For The Incident (Include Alternatives)			
<ol style="list-style-type: none"> <li>1. Provide for the safety of all incident personnel and the public, by adhering to all established guidelines and protocols.</li> <li>2. Keep fire within the Impassable Bay swamp by using Forest Service Roads 270, 200, 222, 235, 232, 212 and 272, and contain the Kelly Road Fire south of 281 road, east of 287, north of Suwannee road and minimize growth on private land.</li> <li>3. Manage the fire in a manner that is safe and cost effective for the values at risk.</li> <li>4. Maintain a positive working relationship with our State and Federal partners and adjacent landowners by initiating and maintaining timely communications. Work closely with designated landowner (GOAL) representatives and adjacent county/state agencies to ensure that fire suppression and incident on respective lands are fully coordinated.</li> <li>5. Together with the Florida Division of Forestry (DOF), coordinate fire management activities to maximize efficient use of wildland and structural resources on private and public lands including urban interface structures, timber, and sensitive habitats. Develop structure protection plans where necessary and minimize the impact to the private timber industry.</li> <li>6. Provide initial attack resources as directed in the Delegation of Authority.</li> <li>7. Prepare and implement a Rehabilitation Plan for current and future fires.</li> <li>8. Minimize adverse effects to Cultural Resources through minimally ground disturbing suppression tactics, recording and flagging sites and avoid if possible. Report unauthorized digging or collection of sites. Record location of dozer lines and/or mechanically improved roads for rehabilitation needs.</li> </ol>			
6. Weather Forecast For Period			
See attached weather			
7. General Safety Message			
<b>Drive defensively and with headlights on.</b> <b>Drink plenty of water and take frequent rest breaks.</b> <b>Ensure LCES is in place and known by all personnel.</b>			
8. ATTACHEMENTS (X IF ATTACHED)			
<input checked="" type="checkbox"/> Organization List - ICS 203 <input checked="" type="checkbox"/> Medical Plan - ICS 206 <input checked="" type="checkbox"/> Air Ops Summary _____ <input checked="" type="checkbox"/> Division Assignment Lists - ICS 204 <input checked="" type="checkbox"/> Incident Map <input checked="" type="checkbox"/> Fire weather forecast _____ <input checked="" type="checkbox"/> Communications Plan - ICS 205 <input checked="" type="checkbox"/> Traffic Plan <input checked="" type="checkbox"/> Fire Behavior forecast _____			
9. Prepared By (Planning Section Chief)		10. Approved By (Incident Commander)	
<b>EVAN BOSHELL</b>		<b>JOHN KIDD</b>	

<b>ORGANIZATION ASSIGNMENT LIST</b>	
1. Incident Name <b>IMPASSABLE BAY COMPLEX</b>	
2. Date Prepared <b>June 26, 2011</b>	3. Time <b>2000</b>
4. Operational Period <b>DAY SHIFT JUNE 26, 2011 0700-2100</b> <b>SWING SHIFT 1200 – JUNE 27 @0200</b>	
<b>Position</b>	<b>Name</b>
<b>5. Incident Commander</b>	
Incident Commanders	<b>John Kidd</b>
Deputy Incident Commander	<b>Tom Suwyn</b>
Incident Commander (T)	<b>Tracy Dunford</b>
Safety Officers	<b>Steve Davis/Ken Moore</b>
Information Officer	<b>Dick Birger</b> <b>Kirsten Cannon</b>
<b>6. Agency Representative</b>	
Agency	Name
FS – Forest Supervisor	<b>Fred Way</b>
FS – Agency Admin. Rep.	<b>Marcus Beard</b>
FS – Agency Admin. Rep.	<b>Don Neal</b>
Resource Advisor - FS	<b>Carl Petrick</b>
Florida DOF	<b>Barry Coulliette</b>
<b>7. Planning Section</b>	
Chief	<b>Evan Boshell</b>
Resources Unit	<b>Clark Tucker</b>
Resources Unit	<b>Renee Flanagan</b>
Documentation Unit	<b>Clark Tucker</b>
Demob Unit	<b>Linda Chappell/Heidi Little</b>
Situation Unit	<b>Lou Ballard</b>
FBAN	<b>Chris Church</b>
IMET	
GIS Specialist	<b>Sarah Peterson</b>
Training Specialist	
Computer Specialist	<b>Heidi Little</b>
Status/Check-in	
<b>8. Logistics Section</b>	
Chief	<b>Brent Crosland</b>
LSC2(T)	<b>Varian Allen</b>
Supply Unit	<b>Nan Coates</b>
Facilities Unit	<b>Duane Stewart</b>
Ground Support Unit	<b>Art Partridge</b>
Communications Unit	<b>Walter Warrick</b>
Medical Unit	<b>Deb Lopez</b>
Ordering Mgr	<b>Randy Davis</b>
Food Unit	<b>Shannon Swann</b>
<b>9. Operations Section</b>	
Field Operations	<b>Colt Mortenson</b> <b>Brook Chadwick (T)</b>
Planning Operations	<b>Tracy Swenson</b>
<b>a. Branch I</b>	
Branch Director	
Division/Group	<b>IA</b> <b>Steve Little</b>
Division/Group	<b>CONTINGENCY</b> <b>Brian Keating</b>
Division/Group	<b>A/B/C/D/E/F</b> <b>Jason Kirks</b> <b>Bryan Brazzeal(T)</b>
Division/Group	<b>Y-Kelly</b> <b>Clint Coates</b> <b>Tyko Isaacson(T)</b>
Division/Group	<b>Z-Kelly</b> <b>Daren Turner</b>
Division/Group	<b>SWING</b>
Division/Group	
<b>b. Branch II</b>	
Branch Director	
Division/Group	
<b>c. Branch III</b>	
Branch Director	
Division/Group	
<b>d. Air Operations Branch</b>	
Air Operations Branch Director	<b>Jill McCurdy</b>
AOBD(T)	<b>Kevin Greenhalgh</b>
ABRO	<b>Darold Williams</b>
Air Tactical Group Supervisor	<b>Mike Melton</b>
Air Tactical Group Supervisor	<b>Dave McCormick</b>
Air Support Group Supervisor	<b>Chris Gamble</b>
Helibase Manager T-1	<b>Don Nicholas</b>
HEB2(T)	<b>Fred Alldridge</b>
ATB Mgr.	<b>Darrell Bohanon</b>
<b>10. Finance Section</b>	
Chief	<b>Mike Taylor</b>
Time Unit	<b>Stacey Heaps</b>
Cost Unit	<b>Wendy Soper</b>
Compensation/Claims Unit	
Procurement Unit Leader	
Prepared by Resource Unit Leader	
<b>CLARK TUCKER</b>	

<b>DIVISION ASSIGNMENT LIST</b>		1. Branch		2. Division/Group <b>IA</b>			
3. Incident Name <b>IMPASSABLE BAY COMPLEX</b>		4. Operational Period Date: <b>June 26, 2011</b> Time: <b>0700 - 2000</b>					
5. Operations Personnel							
OPERATIONS CHIEF	Colt Mortenson Tracy Swenson Brook Chadwick(T)			ICT4	Steve Little		
Safety officer				Air Attack Supervisor	Mike Melton		
6. Resources Assigned this Period							
Strike Team/Task Force/ Resource Designator	Leader	Number Persons	Trans. Needed	Last Day To Work	Location.Time	Location./Time	
ENG 461	Munson	1	N		ICP/0700	OFFICE/2200	
ENG E-4	Barnes	3	N	7/5	ICP/0700	OFFICE/2200	
ENG MARYLAND #5	Wagner	2	N	6/29	ICP/0700	OFFICE/2200	
ENG 408		3	N		ICP/0700	OFFICE/2200	
TPL WILDLANDS #1	Roberts	2	N	7/5	ICP/0700	OFFICE/2200	
DOZER 3		1	N		ICP/0700	OFFICE/2200	
DOZER 57	Coon	1	N	7/6	ICP/0700	OFFICE/2200	
DOZER 58	Grimm	1	N	7/6	ICP/0700	OFFICE/2200	
7. Control Operations <b>PATROL ALL FIRES OTHER THAN IMPASSABLE BAY COMPLEX. BE READY FOR IA ASSIGNMENTS.</b>							
8. Special Instructions <b>INSURE LCES IS IN PLACE. DRIVE DEFENSIVELY WITH LIGHTS ON AT ALL TIMES.</b>							
9. Division/Group Communication Summary							
Function	Frequency	System	Channel	Function	Frequency	System	Channel
CMD West	Rx 173.0375 Tx 167.3250 Tone 136.5	King NIFC	6	CMD East	Rx 166.6125 Tx 168.4000 Tone 136.5	King NIFC	7
Tactical Div/Group		King NIFC		Air to Ground 2	Rx 168.1250 Tx 168.1250	King NIFC	14
Prepared by (Resource Unit Ldr.) /S/ Clark Tucker		Approved by (Planning Sect. Ch.) /S/ EVAN BOSHELL		Date JUNE 25, 2011		Time 2200	

<b>DIVISION ASSIGNMENT LIST</b>		1. Branch		2. Division/Group <b>CONTINGENCY</b>			
3. Incident Name <b>IMPASSABLE BAY COMPLEX</b>		4. Operational Period Date: <b>June 26, 2011</b> Time: <b>0700 - 2000</b>					
5. Operations Personnel							
OPERATIONS CHIEF	Colt Mortenson Tracy Swenson Brook Chadwick(T)		DIVS	Brian Keating			
Safety officer			Air Attack Supervisor	Mike Melton			
6. Resources Assigned this Period							
Strike Team/Task Force/ Resource Designator	Leader	Number Persons	Trans. Needed	Last Day To Work	Location/Time	Location./Time	
F350 & TRAILER - ROT		1	N		FIRE/0700	STATION/2200	
EXCAVATOR - ROT		1	N		FIRE/0700	STATION/2200	
EXCAVATOR W/ FECON - ROT		1	N		FIRE/0700	STATION/2200	
GRADER - ROT		1	N		FIRE/0700	STATION/2200	
DUMP TRUCK - ROT		1	N		FIRE/0700	STATION/2200	
LOWBOY & TRANS. - ROT		1	N		FIRE/0700	STATION/2200	
EXCAVATOR		1	N		FIRE/0700	STATION/2200	
MOWER		1	N		FIRE/0700	STATION/2200	
7. Control Operations <b>CONTINUE PREP WORK ON ROAD SYSTEM. COORDINATE WITH COOPERATORS.</b>							
8. Special Instructions <b>INSURE LCES IS IN PLACE.</b>							
9. Division/Group Communication Summary							
Function	Frequency	System	Channel	Function	Frequency	System	Channel
CMD West	Rx 173.0375 Tx 167.3250 Tone 136.5	King NIFC	6	CMD East	Rx 166.6125 Tx 168.4000 Tone 136.5	King NIFC	7
Tactical Div/Group		King NIFC		Air to Ground 2	Rx 168.1250 Tx 168.1250	King NIFC	14
Prepared by (Resource Unit Ldr.) /S/ Clark Tucker		Approved by (Planning Sect. Ch.) /S/ EVAN BOSHELL		Date JUNE 25, 2011		Time 2200	

<b>DIVISION ASSIGNMENT LIST</b>		1. Branch		2. Division/Group <b>IMPASSABLE</b>			
3. Incident Name <b>IMPASSABLE BAY COMPLEX</b>		4. Operational Period Date: <b>June 26, 2011</b> Time: <b>0700 - 2000</b>					
5. Operations Personnel							
OPERATIONS CHIEF	Colt Mortenson Tracy Swenson Brook Chadwick(T)		DIVS	Jason Kirks Bryan Brazzeal(T)			
Safety officer	Robert Brittain		Air Attack Supervisor	Mike Melton			
6. Resources Assigned this Period							
Strike Team/Task Force/ Resource Designator	Leader	Number Persons	Trans. Needed	Last Day To Work	Location/Time	Location./Time	
SOF2(T)	Daniel Johnson	1	N	7/7	ICP/0700	STATION/2100	
EMT	Meredith Lund	1	N	7/5	ICP/0700	STATION/2100	
ENG 632	Robert Main	3	N	7/9	ICP/0700	STATION/2100	
ENG MAINE 6156	Arthur Slavoie	2	N	7/7	ICP/0700	STATION/2100	
ENG MAINE 6170	Dustin Pickering	2	N	7/7	ICP/0700	STATION/2100	
ENG 2622	Ringer	5	N	6/30	ICP/0700	STATION/2100	
BURNS HELITACK		3	N		ICP/0700	STATION/2100	
7. Control Operations <b>PATROL AND MOPUP AS NEEDED.</b>							
8. Special Instructions <b>INSURE LCES IS IN PLACE. DRIVE DEFENSIVELY WITH LIGHTS ON AT ALL TIMES. DO NOT DRIVE IN DIVISION D UNLESS OPERATIONS CRITICAL.</b>							
9. Division/Group Communication Summary							
Function	Frequency	System	Channel	Function	Frequency	System	Channel
CMD West	Rx 173.0375 Tx 167.3250 Tone 136.5	King NIFC	6	CMD East	Rx 166.6125 Tx 168.4000 Tone 136.5	King NIFC	7
Tactical Div/Group	Rx 168.0500 Tx 168.0500 Tone 136.5	King NIFC	1	Air to Ground 2	Rx 168.1250 Tx 168.1250	King NIFC	14
Prepared by (Resource Unit Ldr.) /S/ Clark Tucker		Approved by (Planning Sect. Ch.) /S/ EVAN BOSHELL		Date JUNE 25, 2011		Time 2200	

<b>DIVISION ASSIGNMENT LIST</b>		1. Branch		2. Division/Group <b>Y - Kelly</b>			
3. Incident Name <b>IMPASSABLE BAY COMPLEX</b>		4. Operational Period Date: <b>June 26, 2011</b> Time: <b>0700 - 2000</b>					
5. Operations Personnel							
OPERATIONS CHIEF	Colt Mortenson Tracy Swenson Brook Chadwick(T)			DIVS	Clint Coates Tyko Isaacson(T)		
Safety officer	Ronnie Taylor			Air Attack Supervisor	Mike Melton		
6. Resources Assigned this Period							
Strike Team/Task Force/ Resource Designator	Leader	Number Persons	Trans. Needed	Last Day To Work	Location/Time	Location./Time	
EMT	Daniel Corale	1	N		ICP/0700	STATION/2100	
CRW T2IA GRAND RONDE	Colby Drake	20	N	7/3	ICP/0700	STATION/2100	
ENG E-17 (BRUSH 12)	Cornett	3	N	6/30	ICP/0700	STATION/2100	
ENG E-18 (BRUSH 74)	Oden	3	N	6/30	ICP/0700	STATION/2100	
KRASSEL HELITACK	Moan	5	N		ICP/0700	STATION/2100	
W/T -20		1	N	7/4	ICP/0700	STATION/2100	
7. Control Operations <b>IMPROVE LINES AND MOPUP.</b>							
8. Special Instructions <b>INSURE LCES IS IN PLACE. DRIVE DEFENSIVELY WITH LIGHTS ON AT ALL TIMES.</b>							
9. Division/Group Communication Summary							
Function	Frequency	System	Channel	Function	Frequency	System	Channel
CMD West	Rx 173.0375 Tx 167.3250 Tone 136.5	King NIFC	6	CMD East	Rx 166.6125 Tx 168.4000 Tone 136.5	King NIFC	7
Tactical Div/Group	Rx 166.7250 Tx 166.7250 Tone 136.5	King NIFC	4	Air to Ground 1	Rx 166.6375 Tx 166.6375	King NIFC	13
Prepared by (Resource Unit Ldr.) /S/ Clark Tucker		Approved by (Planning Sect. Ch.) /S/ EVAN BOSHELL			Date JUNE 25, 2011		Time 2200

<b>DIVISION ASSIGNMENT LIST</b>			1. Branch		2. Division/Group <b>Z - Kelly</b>		
3. Incident Name <b>IMPASSABLE BAY COMPLEX</b>			4. Operational Period Date: <b>June 26, 2011</b> Time: <b>0700 - 2000</b>				
5. Operations Personnel							
OPERATIONS CHIEF		Colt Mortenson Tracy Swenson Brook Chadwick(T)		DIVS		Daren Turner	
Safety officer		Ronnie Taylor		Air Attack Supervisor		Mike Melton	
6. Resources Assigned this Period							
Strike Team/Task Force/ Resource Designator		Leader	Number Persons	Trans. Needed	Last Day To Work	Location/Time	Location./Time
EMT		Andrew Brady	1	N		ICP/0700	STATION/2100
ENG WILDLAND WAREHOUSE		Cirone	3	N	7/4	ICP/0700	STATION/2100
ENG 35		Roberts	3	N	7/4	ICP/0700	STATION/2100
ENG 705		Wesaw	3	N	7/1	ICP/0700	STATION/2100
ENG BRUSH 2		Talbot	3	N	7/4	ICP/0700	STATION/2100
W/T - 10			1	N	7/4	ICP/0700	STATION/2100
7. Control Operations <b>IMPROVE LINES AND MOPUP</b>							
8. Special Instructions <b>INSURE LCES IS IN PLACE. DRIVE DEFENSIVELY WITH LIGHTS ON AT ALL TIMES.</b>							
9. Division/Group Communication Summary							
Function	Frequency	System	Channel	Function	Frequency	System	Channel
CMD West	Rx 173.0375 Tx 167.3250 Tone 136.5	King NIFC	6	CMD East	Rx 166.6125 Tx 168.4000 Tone 136.5	King NIFC	7
Tactical Div/Group	Rx 166.6375 Tx 166.6375 Tone 136.5	King NIFC	5	Air to Ground 1	Rx 166.6375 Tx 166.6375	King NIFC	13
Prepared by (Resource Unit Ldr.) /S/ Clark Tucker			Approved by (Planning Sect. Ch.) /S/ EVAN BOSHELL			Date JUNE 25, 2011	Time 2200





<b>DIVISION ASSIGNMENT LIST</b>		1. Branch		2. Division/Group <b>SWING</b>			
3. Incident Name <b>IMPASSABLE BAY COMPLEX</b>		4. Operational Period Date: <b>June 26, 2011</b> Time: <b>1200 - 6/27@0200</b>					
5. Operations Personnel							
OPERATIONS CHIEF	Colt Mortenson Tracy Swenson Brook Chadwick(T)			DIVS			
Safety officer	Lyle Klenski			Air Attack Supervisor		Mike Melton	
6. Resources Assigned this Period							
Strike Team/Task Force/ Resource Designator	Leader	Number Persons	Trans. Needed	Last Day To Work	Location/Time	Location./Time	
EMT	Scott Pannell	1	N		ICP/1200	STATION/0200	
ENG - RED ROCKS 1 (7/4)	Kregness	2	N	7/4	ICP/1200	STATION/0200	
ENG - RED ROCKS 7 (7/4)	Benoy	3	N	7/4	ICP/1200	STATION/0200	
7. Control Operations <b>PATROL AND MONITOR IMPASSABLE BAY COMPLEX FIRES.</b>							
8. Special Instructions <b>ICP WILL STAFF RADIO AND MEDICAL UNIT. ON CALL SWING SHIFT IC IS TRACY DUNFORD, (801) 558-6508</b>							
9. Division/Group Communication Summary							
Function	Frequency	System	Channel	Function	Frequency	System	Channel
CMD West	Rx 173.0375 Tx 167.3250 Tone 136.5	King NIFC	6	CMD East	Rx 166.6125 Tx 168.4000 Tone 136.5	King NIFC	7
Tactical Div/Group	Rx 168.200 Tx 168.200 Tone 136.5	King NIFC	2	Air to Ground 2	Rx 168.1250 Tx 168.1250	King NIFC	14
Prepared by (Resource Unit Ldr.) /S/ Clark Tucker		Approved by (Planning Sect. Ch.) /S/ EVAN BOSHELL			Date JUNE 25, 2011		Time 2200



**ICS 220 - Continued**

<b>10. TASK/ MISSION/ ASSIGNMENT (Type/ function includes: Air Tactical, Retardant, Recon, Personnel Transport, Bucket Operations, SAR, etc.)</b>					
<b>TYPE/FUNCTION</b>	<b>PRIORITY</b>	<b>NAME OF PERSONNEL OR CARGO (If applicable) or instructions for tactical aircraft</b>	<b>MISSION START</b>	<b>FLY FROM</b>	<b>FLY TO</b>
Air Tactical		Coverage by ATGS as needed or requested by OPS.	0900	ATB	Fire
Retardant Drops		Requested by DIVS through ATGS and approved by OPS.	1000	ATB	Fire
Water Drops		Requested by DIVS through ATGS and approved by OPS.	0900	Helibase	Fire
Medical Transport		Crew Boss contact DIVS; DIVS contact ATGS for medical evacuations/transport.	As Requested	Helibase	Fire
Recon		As requested and approved by OPS.	As Requested	Helibase	Fire
Initial Attack		As directed by OPS.			

<b>Helibase, Dip Sites, Pick Up Sites, etc.</b>	<b>Helispots, Sling Spots, Repeater Sites, etc.</b>
Helibase 30° 11' 13" x 82° 34' 27"	

**VI. Wind Restrictions.**

The capability to fly a helicopter in excessive wind conditions varies considerably with the weight class of the helicopter and the degree of turbulence associated with the wind. If the helicopter flight manual or the helicopter operator's policy does not set lower limits, the following shall be used. These limits may be further restricted at the discretion of the Pilot or other air operations personnel. Limitations are as follows:

**FLIGHT ABOVE GROUND LEVEL  
FLIGHT PERMITTED IN WINDS LESS THAN / MAXIMUM GUST SPREAD (in knots)**

<b>Flights More Than 500' AGL</b>		
<b>Type 1 Helicopters</b>	<b>Type 2 Helicopters</b>	<b>Type 3 Helicopters</b>
50 kts (43 mph) / Gusts: N/A	50 kts (43 mph) / Gusts: N/A	50 kts (43 mph) / Gusts: N/A
<b>Flights Less Than 500' AGL</b>		
<b>Type 1 Helicopters</b>	<b>Type 2 Helicopters</b>	<b>Type 3 Helicopters</b>
40 kts (35 mph) / 15 (13 mph) kts	40 kts (35 mph) / 15 (13 mph) kts	30 kts (26 mph)/15 kts (13 mph)

Approved by: /s/ Jill McCurdy, AOBD

FIRE WEATHER PLANNING FORECAST FOR NORTHEAST FLORIDA/SOUTHEAST GEORGIA  
 NATIONAL WEATHER SERVICE JACKSONVILLE FL  
 213 PM EDT SAT JUN 25 2011

**.DISCUSSION...**A SURFACE TROUGH OVER THE SOUTHEAST REGION THIS WEEKEND WILL KEEP MOISTURE LEVELS HIGH AND PROVIDE FOCUS FOR INCREASED CHANCES OF MAINLY AFTERNOON AND EVENING SHOWERS AND THUNDERSTORMS. RELATIVE HUMIDITIES ARE EXPECTED TO REMAIN ABOVE CRITICAL VALUES. WEST TO SOUTHWEST PREVAILING FLOW IS EXPECTED WITH SUSTAINED SPEEDS LESS THAN 15 MPH. WINDS WILL BECOME SSE NEAR THE ATLANTIC COAST EACH AFTERNOON AND EVENING. THE EAST COAST SEA BREEZE WILL INCREASE WIND SPEEDS TO NEAR 15 MPH AT TIMES. WINDS WILL ALSO BE HIGHER AND GUSTY NEAR THUNDERSTORMS. OUTFLOWS FROM THUNDERSTORMS CAN PRODUCE SUDDEN SHIFTS IN WIND DIRECTION.

FLZ020>023-030>032-035>037-260915-  
 HAMILTON-SUWANNEE-**COLUMBIA**-BAKER-UNION-BRADFORD-CLAY-GILCHRIST-  
 ALACHUA-PUTNAM-  
 213 PM EDT SAT JUN 25 2011

	TONIGHT	SUN	SUN NIGHT	MON
CLOUD COVER	PCLDY	PCLDY	PCLDY	PCLDY
CHANCE PRECIP (%)	20	40	30	40
WEATHER TYPE	TSTMS	TSTMS	TSTMS	TSTMS
TEMP	69	96	70	96
RH (%)	100	41	100	43
20FT WND MPH (AM)		SW 4		LGT/VAR
20FT WND MPH (PM)	SW 4	SW 7	SW 5	SW 7
PRECIP DURATION	1	2	1	1
PRECIP BEGIN	8 PM	8 AM	CONTINUING	8 AM
PRECIP END	2 AM	CONTINUING	2 AM	CONTINUING
PRECIP AMOUNT	0.02	0.17	0.06	0.12
LAL	3	4	3	3
MIXING HEIGHT(FT-AGL)	200	8200	200	7400
TRANSPORT WND (MPH)	SW 6	W 10	SW 6	W 10
DISPERSION INDEX	2	38	2	33
MAX LVORI	10		8	

REMARKS...NONE.

.FORECAST FOR DAYS 3 THROUGH 7...

.TUESDAY...MOSTLY CLOUDY. A 50 PERCENT CHANCE OF SHOWERS AND THUNDERSTORMS. LOWS IN THE LOWER 70S. HIGHS IN THE LOWER 90S. SOUTHWEST WINDS 5 TO 10 MPH.

.WEDNESDAY...MOSTLY CLOUDY. A 50 PERCENT CHANCE OF SHOWERS AND THUNDERSTORMS. LOWS IN THE LOWER 70S. HIGHS IN THE MID 90S. SOUTHWEST WINDS 5 TO 10 MPH.

.THURSDAY...MOSTLY CLOUDY. A 40 PERCENT CHANCE OF SHOWERS AND THUNDERSTORMS. LOWS IN THE LOWER 70S. HIGHS IN THE LOWER 90S. SOUTHWEST WINDS 5 TO 10 MPH.

.FRIDAY THROUGH SATURDAY...MOSTLY CLOUDY WITH A 40 PERCENT CHANCE OF SHOWERS AND THUNDERSTORMS. LOWS IN THE LOWER 70S. HIGHS IN THE LOWER 90S. EAST WINDS 5 TO 10 MPH.

# FIRE BEHAVIOR FORECAST

FORECAST NUMBER: 8	TYPE OF FIRE: Wildland Fire
FIRE NAME: Impassable Bay Complex	OPERATIONAL PERIOD: 26 June 2011 Day/Swing Shift
DATE ISSUED: 25 June 2011	TIME ISSUED: 1930
UNIT: Osceola NF Olustee Ranger District	SIGNED: Chris Church – FBAN

## INPUTS

**WEATHER SUMMARY:** ....Synopsis.... Diurnal convection will continue thru the remainder of the short term with enhancement from both the deeper moisture to the south and a frontal trough to the north. Best chances for precipitation on Sunday will be over the extreme south zones once again with more uniform pops by Monday afternoon. Upper ridge will rebuild just south of the area...sending temps back up to several degrees above normal.

### FUELS:

The KBDI for the fire area is still above the 97<sup>th</sup> percentile and near records for seasonal average. The most recent ERC measured for this area shows the ERC has dropped to below the 70<sup>th</sup> percentile due to increased RH's and the recent rain received. Fuels are a mixed southern rough element including slash pine and bald cypress with scattered longleaf pine. The understory consists of palmetto, gallberry, and mixed varieties of brush. Areas with timber contain a moderate dead and down component with higher levels of dead and downed in various locations. Most areas of the fire area have brush (fuel model 7) that will carry fire especially with a wind component.

## FIRE BEHAVIOR OUTPUTS

### GENERAL:

Conditions should increase slightly with the last day or so of drying. RH 41%, temp at 96, and winds 20 foot, SW 4 mph in the morning and SW at 7 mph afternoon. Fire behavior should be smoldering, and creeping, with rare intermittent short lived torching, as any T-cells increase winds over your fire. Dispersion index will be moderate at 38. Movement requires a brush component and torching may spot into adjacent fuels. Smoke may impact roaded areas in the early morning hours and as fire activity increases.

Fuel Model	ROS (ch/hr)		Flame Length (ft)		PIG	Spot Dist
	Head	Backing	Head	Backing		
7- Southern Rough	11	9	3.8	3	51%	.1 mile
SH8HghLoad, Humid	8	6	6	5	51%	.1 mile

Fire behavior predictions are for the hottest and driest period of the day.

**SPECIFIC: Impassable Bay** The fire area will continue to smolder and creep early in the day between Drop Point 1 and Drop Point 2 and in the unburned islands in the interior, but could spread through torching especially later in the day after the last 2 days of drying and/or with any significant thunderstorm wind component. Spotting today should be minimal due to moderate RH's and low wind speeds. Brush and downed logs may be more of a factor today in fire spread with the recent drying of fuels. The amount of unburned fuels close to the line in Division A and C should be monitored closely.

**Kelly Road** This fire is a drier site and is burning in 20 year old rough. There is quite a bit of organic material due to lack of fire, and falling trees could be an issue as organic material has burned out around the root systems. Fire behavior will be smoldering and creeping in the am especially near the bog area in Div Y and also in the northern portion of Div Z, with rare intermittent torching possible in the afternoon with any significant downdraft winds. Spotting should be minimized by moderate RH's and the lower wind speed.

### AIR OPERATIONS:

Smoke inversions should be negligible today on the Kelly Road Fire, and minimal on the Impassable Bay Fire. Air ops should be smooth early in the day until any sea breezes or thunderstorms infiltrate the area in the afternoon. Chance of rain today could limit air operations due to visibility and potential lightning hazards (LAL4).

## SAFETY

Unsettled weather today will again bring a chance of lightning, your safest area during lightning storms is the inside of your vehicle.

Watch for wind shifts with afternoon sea breeze influences and around any thunderstorms!



# SAFETY MESSAGE

## SAFETY IS OUR FIRST PRIORITY

*Fire fighter safety comes first on every fire, every time*



**LCES      FIRE FIGHTERS CODE OF CONDUCT      IRPG      WORK-REST GUIDELINES**

### Lookouts Communications Escape Routes Safety Zones

#### Make Sure LCES Is In Place

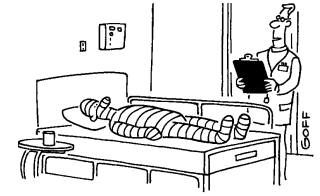
Each firefighter must know the interconnection of LCES - lookouts, communications, escape routes, and safety zones. LCES should be established before fighting the fire: Select lookouts, set up a communications plan, choose escape routes, and select safety zones.



#### SAFETY THOUGHT

#### **DANGER!**

Been there, done that? Don't take safety for granted.  
Keep alert to hazards—no matter how often you've done the job.  
It's the one you don't see that eventually gets you.



"I understand you're the worker with the near-perfect safety record."

### MAJOR HAZARDS AND RISKS

- |  |   |
|--|---|
| <ul style="list-style-type: none"> <li>• Extreme, Uncharacteristic Fire Behavior</li> <li>• Chance of Lightning and Afternoon Showers</li> <li>• High Dispersion Index High Temperatures</li> <li>• Heavy Continuous Fuels.</li> <li>• Driving Long Distances.</li> <li>• Fire Access Roads (sandy and loose) Slow Down</li> </ul> | <ul style="list-style-type: none"> <li>• Snags! Snags! Snags!—Heads Up!</li> <li>• No Travel Restrictions for Public. (Be Aware)</li> <li>• Weather Cells may limit aircraft use</li> <li>• Critters- Snakes, Gators and Insects</li> <li>• Highway Driving--Lights, Seatbelts, Windshields</li> <li>• Spotty Communications</li> </ul> |
|--|---|



### SAFETY IS AN ATTITUDE

### MAINTAIN FOCUS!!

### DON'T GET COMPLACENT

### WORK AS IF SOMEONE'S LIFE DEPENDS ON IT!!

#### "WATCH OUT" FOR COMPLACENCY

- Fire activity has slowed considerably. Ward off boredom and complacency.
- Take care of personal health conditions. See the medics for blisters, allergies, and colds.
- Clearly understand assignment and be accountable for meeting determined objectives.
- Review the 10 standard fire fighting orders and 18 "watch out" situations.
- Communicate identified hazards to others.
- Enjoy your work, but avoid horseplay. Display an appropriate sense of humor.

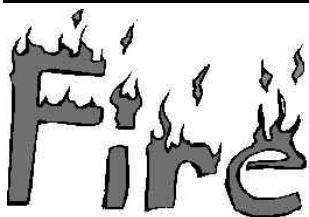
### USE THE INCIDENT RESPONSE POCKET GUIDE DAILY

Assess The Situation

Identify Hazards

Determine Hazard Controls

## A PROCEDURAL APPROACH TO SAFETY



- Determine what the assignment is
- Identify the hazards
- Analyze the risks
- Implement steps to ensure safety
- Re-analyze the situation as it changes

# **FIRE SAFETY BEGINS WITH U**

**Safety Officers:** Ken Moore, Steve Davis, Lyle Klenski, Robert Brittain, Daniel Johnson, Ronnie Taylor

		<b>TACTICAL WATCHOUTS</b>	<b>LCES HAZARD CONTROL</b> ** Denotes Common Denominator of Tragedy Fires
ALL	X X X X X	Under slung Fireline Mid-slope Fireline Unburned Fuel Indirect Fireline Downhill Fireline Frontal Assault Unanchored <b>Small→Large Fire**</b>	<ul style="list-style-type: none"> <li>• Staff dedicated lookouts at pre-identified vantage points</li> <li>• Staff aerial lookout. During major threatening activity, assess &amp; provide direction</li> <li>• Establish human repeater site</li> <li>• Take hourly weather observations over command frequency</li> <li>• Abort assignment if communications cannot be maintained</li> <li>• Weather watch system to be developed by FBAN/Meteorologist</li> <li>• Flag, time improve/construct multiple escape routes and safety zones</li> <li>• Establish situation trigger points for disengagement/exit to safety zones</li> </ul>
ALL	X	Multiple Aircraft	<ul style="list-style-type: none"> <li>• Air Operations ensures that all incident aviation personnel are briefed on daily tactics, planned use, and safety hazards</li> <li>• Maintain positive direction between Air Attack, lead plane pilot, assigned aircraft, and ground operations</li> <li>• If confusion or conflicting priorities develop, STOP operations, until they can be safely continued</li> </ul>
ALL	X	Intruder Aircraft	<ul style="list-style-type: none"> <li>• Designate TFR airspace over the incident air operations area</li> <li>• Report airspace conflicts or intrusion immediately to Air Support</li> <li>• Curtail air operations, as needed, until airspace is clear</li> </ul>
ALL	X	Bucket Drops	<ul style="list-style-type: none"> <li>• Ensure clear air-ground communications</li> <li>• Stay clear of flight zones and drop areas.</li> <li>• Watch out for rotor wash or air tanker turbulence and potentially erratic fire behavior</li> <li>• Keep heads up for snags and hazard trees</li> </ul>
ALL	X	Air Support Dependent	<ul style="list-style-type: none"> <li>• Staff dedicated lookouts at pre-identified vantage points.</li> <li>• Staff aerial lookout. During major threatening activity, assess &amp; provide direction</li> <li>• Do go/no go assessment for ground operations</li> <li>• Ensure that firefighter safety is not compromised</li> </ul>
ALL	X	Air Operations	Use clear text communication and identify ground contact with pilot. Clear drop area of all personnel prior to drop. No personnel in zone during dipping or dropping operation. Watch for erratic winds along ridges. Stay heads up with helicopter operations and crew shuttles. Pay attention to helitack personnel. Stay buckled up until released by helitack.
ALL	X	Spotting, Torching	<ul style="list-style-type: none"> <li>• Watch for smoldering fires picking up over large areas, trees crowning out inside of fireline, high sustained rate of spread, well-developed convection column, hot/dry.</li> <li>• Patrol for spots especially after torching.</li> <li>• Post lookouts</li> </ul>
ALL	X X	Dehydration Heat Stress	<ul style="list-style-type: none"> <li>• Drink plenty of fluids (1 qt/hr); ensure adequate replacement water supplies</li> <li>• Pace work; allow frequent periods of rest in shade, if possible</li> <li>• Monitor fitness of crews for assignments</li> <li>• Limit shift lengths</li> </ul>
ALL	X	Snags	<ul style="list-style-type: none"> <li>• Stay alert for strong winds, fire damaged trees, air operations turbulence, vibrations from heavy equipment, , rot or shallow-rooted trees</li> <li>• Scout, identify and flag hazards, fell dangerous trees near the line</li> <li>• Do go/no go assessment prior to falling</li> <li>• Post lookouts, assess trees in work areas, issue daily warnings</li> </ul>
ALL	X	Road Hazards	SLOW DOWN, do not over-drive dirt roads, turn on headlights, wear seatbelts, maintain spacing, check brakes, clean windshield, watch backing and use a spotter when available. Use caution on one-way access roads.



INCIDENT RADIO COMMUNICATIONS PLAN		1. Incident Name		2. Date/ Time Prepared		3. Operational Period Date/Time	
		Impassable Bay Complex		06-25-2011 2030		06-26-2011 0730 to 06-27@0200	
4. Basic Radio Channel Utilization							
Radio Type/Cache	Channel	Function	Frequency/Tone		Mode	Assignment	Remarks
King NIFC	1	Tac1	RX 168.0500 TX 168.0500	Tone 136.5 Tone 136.5	Narrow	DIV A - B - C - D - E - F	Post Human Repeaters where Needed
King NIFC	2	Tac 2	RX 168.2000 TX 168.2000	Tone 136.5 Tone 136.5	Narrow	SWING SHIFT	Post Human Repeaters where Needed
King NIFC	3	Tac3	RX 168.6000 TX 168.6000	Tone 136.5 Tone 136.5	Narrow	UNASSIGNED	Post Human Repeaters where Needed
King NIFC	4	Tac 4	RX 166.7250 TX 166.7250	Tone 136.5 Tone 136.5	Narrow	DIV Y	Post Human Repeaters where Needed
King NIFC	5	Tac 5	RX 166.7750 TX 166.7750	Tone 136.5 Tone 136.5	Narrow	DIV Z	Post Human Repeaters where Needed
King NIFC	6	<b>CMD</b>	RX 173.0375 TX 167.3250	Tone None Tone 136.5	Narrow	<b>COMMAND WEST</b>	Linked to Channel 7
King NIFC	7	<b>CMD</b>	RX 166.6125 TX 168.4000	Tone 136.5	Narrow	<b>COMMAND EAST</b>	Linked to Channel 6
King R 8	8	R - 8 Fire	RX 169.9000 TX 169.9000	Tone 136.5	Narrow	Local IA	Post Human Repeaters where Needed
King DOF 190	9	DOF 190	RX 151.2725 TX 151.2725	Tone None Tone None	Narrow	Primary IA for off Forest	Post Human Repeaters where Needed
King DOF 191	10	DOF 191	RX 151.2875 TX 151.2875	Tone None Tone None	Narrow	Local IA	Post Human Repeaters where needed
King NIFC	11	FOREST	RX 171.5500 TX 172.3750	Tone 167.9	Narrow	Olustee Forest Repeater	Forest Dispatch
King NIFC	12	FOREST	RX 171.5500 TX 172.3750	Tone 146.2	Narrow	Eddy Forest Repeater	Forest Dispatch
King NIFC	13	A/G 1	RX 166.6375 TX 166.6375		Narrow	Air to Ground Primary	AIR to Ground Primary Div Y & Z
King NIFC	14	A/G 2	RX 168.1250 TX 168.1250		Narrow	Air to Ground Secondary	Air to Ground Secondary A/B/C/D/E/F - IA
King NIFC	15	White	RX 154.2800 TX 154.2800	Tone None Tone None	Narrow	Local IA	
King NIFC	16	Air Guard	RX 168.6250 TX 168.6250	Tone 110.9	Narrow	Air Guard	Emergency Use Only Tone 110.9

5. Prepared by (Communications Unit) Walter Warrick COML

## **Accident Incident within an Incident**

The **Incident Commander** is responsible for overall action in case of a serious accident.

Upon occurrence of a “**MAJOR**” accident involving significant injury or fatality on the fireline, the highest qualified person on scene shall take control of the situation until the nearest **Division Supervisor** arrives on scene to assume control. Immediate and clear communication must be established between Operations and Division/Group Supervisors to determine who can arrive at the scene quickest and gain control of the situation. In the event of such an accident in camp or on incident roads on-site personnel shall take control until an **Operations Chief or Division Supervisor** arrive or **Local Law Enforcement** and or **Medical personnel** have assumed control.

The **Incident Dispatcher or Responsible Operations Individual** in charge of the accident will take immediate action to clear all radio traffic on the incident “Command Channel” by broadcasting **"Emergency Traffic Only"**, so that quick and proper coordination for handling the accident can take place.

Upon arrival at the accident scene, whoever has been designated to manage the situation (Ops or DIVS) should take immediate actions to:

- Obtain and facilitate EMT's to the scene – notify them you are in charge.
- Co-ordinate and facilitate appropriate transportation for injured.
- Move all unnecessary personnel from the accident scene.
- Secure the scene area and identify witnesses for investigation.

The **Safety Officer** will respond immediately to the scene of the accident to assist the Operations Chief or Division/Group Supervisor and shall be responsible for initiating the proper investigation and documentation by qualified personnel.

Immediately upon notification of an accident requiring emergency action the **Medical Unit Leader and Incident Commander** shall respond to incident communications.

**Plans Chief, Logistics Chief, Finance Chief** and **Information Officer** shall be notified and respond to incident communications in an appropriate manner that will not significantly affect ongoing operations.

The **Logistics Chief** shall attempt to control external communication, phones and radio. All information released from the incident shall be through the incident Information Officer with the approval of the Incident Commander.

The **Plans Chief** will make contact with the Agency Administrator who will in turn contact appropriate officials of the agency. If the accident involves a fatality, the Agency Administrator will contact the Sheriff's Office, the Coroner's Office, and the employing agency of the victim and will find out who will contact family members. The Plans Chief

will assure that an individual is assigned to document all communications regarding the accident.

At no time during the accident/fatality evacuation process will the name of the victim(s) be used.

The need of a *Critical Incident Stress Debriefing* for incident personnel will be discussed by the Core Team with input from the Medical Unit Leader, the Human Resource Specialist, and local / involved individuals. The Incident Commander will approve such debriefings.

**Approved by:**

\_\_\_\_\_  
**Incident Commander**

\_\_\_\_\_  
**Date**

<b>MEDICAL PLAN</b>	1. Incident Name	2. Date Prepared	3. Time Prepared	4. Operational Period				
	Impassable Bay Complex	6/25/2011	2000	6/26/2011 & Swing				
<b>5. Incident Medical Aid Station</b>								
Medical Aid Stations	Location					Paramedics		
						Yes	No	
<b>ICP</b>	<b>OLUSTEE, FLORIDA</b>					<b>X</b>		
<b>6. Transportation</b>								
A. Ambulance Services								
Name	Address			Phone		Paramedics		
						Yes	No	
<b>BAKER COUNTY EMS</b>	<b>MACCLENNY</b>			<b>904-259-2861</b>		<b>X</b>		
<b>COLUMBIA CO. EMS</b>	<b>LAKE CITY</b>			<b>904-758-9111</b>		<b>X</b>		
B. Incident Ambulances								
Name	Location					Paramedics		
						Yes	No	
<b>7. Hospitals</b>								
Name	Address	Travel Time		Phone	Helipad		Burn Center	
		Air	Grnd		Yes	No	Yes	No
<b>LAKE SHORE</b>	<b>LAKE CITY</b>	<b>15 MIN</b>	<b>20 MIN.</b>	<b>386-292-8001</b>	<b>X</b>			<b>X</b>
					<b>X</b>			<b>X</b>
<b>URGENT CARE</b>	<b>LAKE CITY</b>	<b>15 MIN</b>	<b>20M IN</b>	<b>386-758-2944</b>		<b>X</b>		<b>X</b>
<b>ED FRASER MEM.</b>	<b>MACCLENNY</b>	<b>15 MIN</b>	<b>20 MIN</b>	<b>904-259-3151</b>	<b>X</b>			<b>X</b>
<b>UNIV.MED. JACKSONVILLE</b>	<b>JACKSONVILLE</b>	<b>20 MIN</b>	<b>45 MIN.</b>	<b>904-549-4165</b>	<b>X</b>			<b>X</b>
<b>SHANDS HOSPITAL</b>	<b>GAINESVILLE FL</b>	<b>30 MIN</b>	<b>1 HRS</b>	<b>352-494-5616</b>	<b>X</b>		<b>X</b>	
<b>LIFE FLIGHT</b>	<b>JACKSONVILLE</b>	<b>30 MIN</b>		<b>904-202-2136</b>	<b>X</b>			
<b>8. Medical Emergency Procedures</b>								
<p>Upon occurrence of a <b>“MAJOR”</b> medical or accident involving significant injury on the fireline. The <b>nearest fireline Supervisor or Leader</b> on the scene will be in charge and will clear all radio traffic on the incident “Command” Channel. The command channel will be used to coordinate response – do <i>not</i> use names.</p> <ul style="list-style-type: none"> <li>o Obtain and facilitate nearest EMT’s to the scene, request medical unit response – DIVS in charge of scene.</li> <li>o Coordinate and facilitate appropriate transportation for injured with Medical Unit – EMT in charge of patient(s).</li> <li>o Nature of problem: # injured; Condition and Vitals; Location (GPS Coordinates)</li> <li>o Remove all unnecessary personnel from the accident scene – notify SOFR.</li> <li>o Secure the scene area and identify witnesses for later investigation – keep a log.</li> <li>o Use emergency form on back of medical plan to report to communications.</li> </ul> <p style="text-align: center;"><b>Life safety is the Number 1 Priority on this Incident</b></p>								
9. Prepared by (Medical Unit Leader)				10. Reviewed by (Safety Officer)				
<b>DEB LOPEZ      MATT PAYNE(T)</b>				<b>STEVE DAVIS</b>				

# COMMUNICATION FOR INJURY/MEDICAL EMERGENCY

Do not use the name of the Injured individual over the radio. In the event of a minor injury, so state when relaying the information so a false sense of urgency is not. The Medical Unit Leader is to be notified in all injury situations.

Date: \_\_\_\_\_ Time: \_\_\_\_\_ Division \_\_\_\_\_

Location: \_\_\_\_\_

On Scene Point of Contact (Name & Position): \_\_\_\_\_ Radio Frequency \_\_\_\_\_

Medical personnel on site (name) \_\_\_\_\_

Type of Injury: \_\_\_\_\_

Sex \_\_\_\_\_ Age \_\_\_\_\_

Medical Injury \_\_\_\_\_ or Illness \_\_\_\_\_ Life Threatening Yes \_\_\_\_\_ No \_\_\_\_\_

Patient Condition- Critical \_\_\_\_\_ Serious \_\_\_\_\_ Minor \_\_\_\_\_ Conscious Yes \_\_\_\_\_ No \_\_\_\_\_

Additional medical equipment or personnel needed? (Type and Quantity) \_\_\_\_\_

Is air transportation needed: Yes \_\_\_\_\_ No \_\_\_\_\_ Can Patient sit up Yes \_\_\_\_\_ No \_\_\_\_\_ Weight \_\_\_\_\_

Location LAT \_\_\_\_\_ LONG \_\_\_\_\_ Drop Point \_\_\_\_\_

Patient Home Unit \_\_\_\_\_ Agency \_\_\_\_\_

Assessment BP \_\_\_\_\_ Pulse \_\_\_\_\_ Level of Consciousness \_\_\_\_\_ Skin \_\_\_\_\_

Difficulty Breathing Yes \_\_\_\_\_ No \_\_\_\_\_

On going Assessment- Document as they occur – on Scene personnel,

## KIDD'S Incident Management Team Cell Phone List

<i>Position</i>	<i>Name</i>	<i>Cell</i>
<b>Command &amp; General:</b>		
ICT2	John Kidd	208-869-5979
ICDP	Tom Suwyn	435-864-7064
SOFR	Steve Davis	208-313-7835
SOF2	Ken Moore	435-313-2248
PIO2	Kirsten Cannon	702-595-2034
PIO2	Dick Birger	651-769-5952
OSC2	Tracy Swenson	435-553-5926
AOBD	Jill McCurdy	208-387-5737
OSC2	Colt Mortenson	970-756-4831
LSC2	Brent Crosland	435-253-2054
FSC2	Mike Taylor	435-592-0006
PSC2	Evan Boshell	435-691-9331
<b>Operations:</b>		
DIVS	Jason Kirks	435-259-9635
DIVS	Clint Coates	435-691-7272
DIVS	Brian Keating	435-259-9691
DIVS	Daren Turner	801-977-4337
ASGS	Chris Gamble	435-790-7095
ATGS	Dave McCormick	509-449-0804
HEB1	Don Nicolas	218-360-1816
ABRO	Darold Williams	386-752-0600
ATB MGR	Darrell Bohanon	386-758-9078
ATGS	Mike Melton	435-590-4712
<b>Planning:</b>		
RESL	Clark Tucker	435-823-6044
RESL	Renee Flanagan	435-368-5107
SITL	Lou Ballard	208-859-8359
GIST	Sarah Peterson	208-830-3104
FBAN	Chris Church	208-921-8656
DMOB	Linda Chappell	435-979-8356
READ	Carl Petrick	850-524-1233
CTSP	Heidi Little	801-618-5240
<b>Logistics:</b>		
COMT	Walter Warrick	208-313-4667
SPUL	Nan Coates	435-691-1218
FACL	Duane Stewart	435-616-8750
GSUL	Varian Allen	435-749-7164
EPQM	Art Partridge	435-979-4322
FUDL	Shannon Swann	702-271-6765
BCMG	Sean Stewart	435-616-2580
SECM	Randy Davis	435-691-3226
MEDL	Deb Lopez	435-406-1210
<b>Finance:</b>		
TIME	Stacy Heaps	435-287-7013
COST	Wendy Soper	435-590-4728
<b>Trainees</b>		
ICT2	Tracy Dunford	801-558-6508
AOBD	Kevin Greenhalgh	435-691-3771
DIVS	Tyko Isaacson	208-634-0379
DIVS	Bryan Brazzeal	435-680-3625
MEDL	Matt Payne	435-770-3391
OSC2	Brook Chadwick	801-541-6173

## **RESTAURANTS**

**Texas Roadhouse: 386-758-0074**

**Porterhouse Grill: 386-754-5907**

**Cracker Barrel: 386-755-5638 (Breakfast)**

**Applebee's: 386-752-7087**

**Blue Roof Grill: 386-719-2424**

**Pizza Hut: 386-752-3896**

**I-HOP : (Breakfast and Dinner)**

**Rates:**

**Breakfast = \$7.00**

**Lunch = \$11.00**

**Dinner = \$23.00**

**Tips will be paid by Government.**

### KIDD'S MANAGEMENT TEAM SUPPLY ORDER

Date & Time Order was Placed	Order # (DIVS + #)	Location & Time for Delivery (Division/LZ/DP/Lat Long)	Mode of delivery (Driven/Helo/DIVS to Pick up)	
Order received in Communications by (name):			Time:	
Order received in Supply by (name):			Time:	
Order received in Transportation by (name):			Time:	
Order received in Helibase by (name):			Time:	
Order shipped to line unit by (name): (Send this sheet to the line with the order)			Time:	
#	Item	Amount	Item	Amount
1.	Meals Breakfasts		26. Swivel ea.	
2.	Meals Lunches		27. Leadline ea.	
3.	Meals Dinners		28. Backpack Pump ea.	
4.	Meals MRE's/case		29. Slingable Blivet ea.	
5.	Water 5 gal. cubies		30. Folding Tank Size/ea.	
6.	Gatorade Case		31. Pumpkin Size/ea.	
7.	Batteries AA 1-Flat		32. Hose 1 <sup>1/2</sup> " / ft.	
8.	Batteries Specify Type		33. Hose 1" / ft.	
9.	Flagging (Specify type) # Roll		34. Hose 3/4" / ft.	
10.	Sleeping Bags ea		35. Reducer 1 <sup>1/2</sup> "X1"	
11.	Tarps/Plastic ea./roll		36. Reducer 1"X 3/4"	
12.	Parachute Cord roll		37. Gated "Y" 1 <sup>1/2</sup> "	
13.	Garbage Bags Box		38. Gated "Y" 1"	
14.	20 Man First Aid Kit ea.		39. Gated "Y" 3/4"	
15.	Coffee Kit w/propane ea.		40. Shut-off Valve 3/4"	
16.	Gas Raw		41. In-line Tee 1 <sup>1/2</sup> "X1"	
17.	Bar Oil Gal.		42. Nozzle 1 <sup>1/2</sup> "	
18.	2- cycle oil QT's		43. Nozzle 1"	
19.	Tool Shovel ea.		44. Nozzle 3/4"	
20.	Tool Pulaski ea.		45. Chainsaw Kit ea.	
21.	Tool Combi ea.		46. Mark 3 Pump Kit-Cache w/10 gal raw gas and 2 qts 2 cycle oil ea.	
22.	Tool Specify Type ea.			
23.	Fusee Case			
24.	Drip Torches Full ea.		47. Lightweight Pump Kit-Cache w/5 gal raw gas and 1 qt 2 cycle oil ea.	
25.	Drip Torch Mix 5 Gal.		48. Division Hose Lay Kit ea.	



**GPS Datum: NAD 83**

**Team Ordering/ Timeline Process:**

0630 – Morning Briefing, start of crew time.

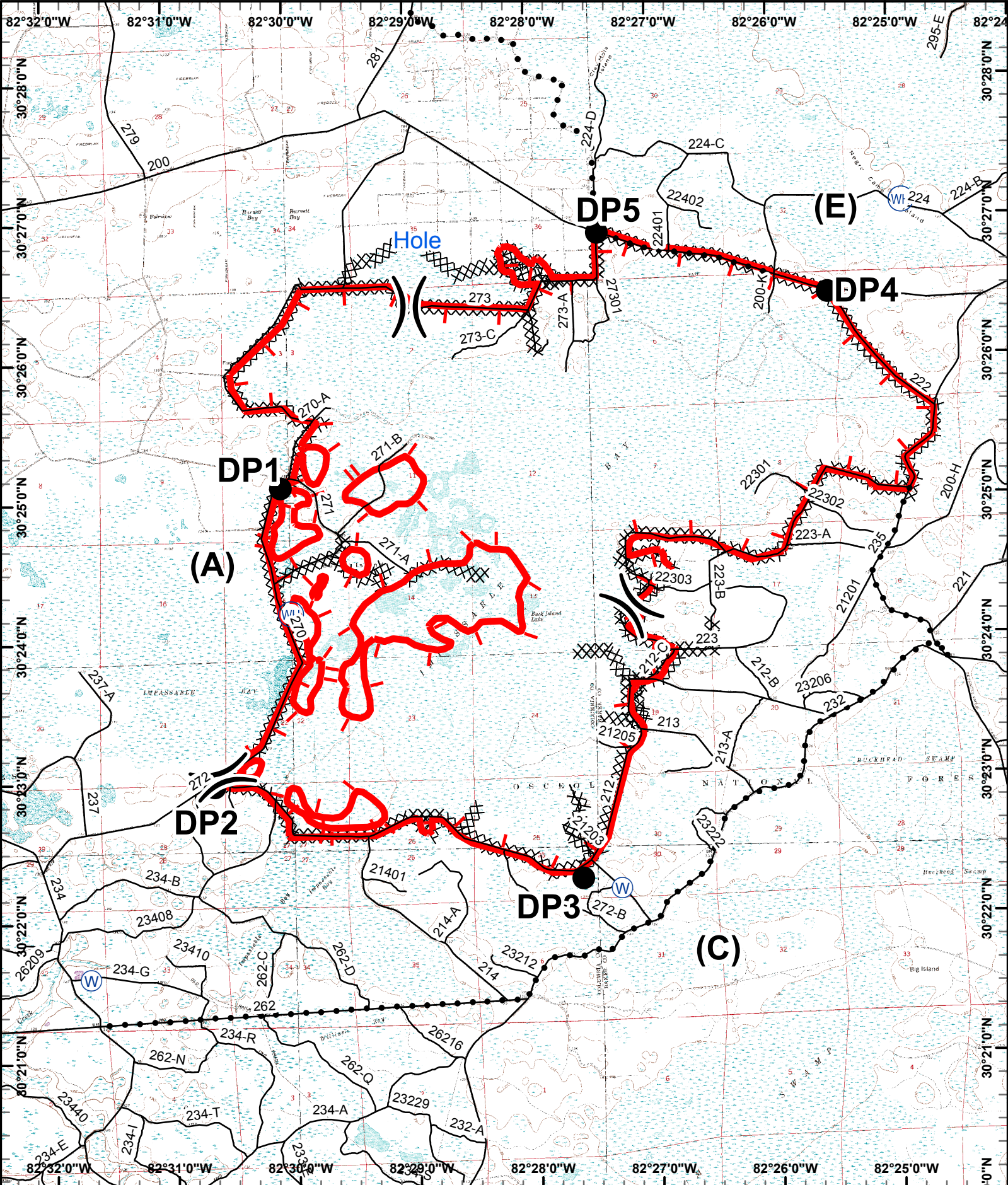
1100 – Last call to change spike camp resource (food, fuel, etc) location.

1500 – DIVS to have next day’s resource order ready for OPS.

- All crew level orders will be placed through DIVS.
- DIVS will place all orders through Communications Unit.
- All orders will be tracked using the process found on the front of form.



<b>Division Hose Lay Kit Components</b>			
Item	NFES#	Quantity	
Hose 1½”	1239	1000’	
Hose 1”	1238	1000’	
Hose, ¾”	1016	500’	
Tee, 1 ½” – 1”	0731	5	
Nozzle, 1 ½”	0137	2	
Nozzle, 1”	0138	6	
Nozzle, ¾”	0136	12	
1 ½” Gated “Y”	0231	5	
1” Gated “Y”	2059	5	
¾” Gated “Y”	0272	6	
Shut off valve ¾”	0738	4	
Reducers, 1 ½” – 1”	0010	5	
Reducers, 1” – ¾”	0733	5	
Double Female 1”	0710	1	
Double Female 1 ½”	0857	1	





- Division
- Helispot & Dipsite
- Drop Point
- Active Fire Perimeter
- Contingency Line
- Water Source
- Dozer Line and Improved Line

Created June 26, 2011 1800  
s.peterson

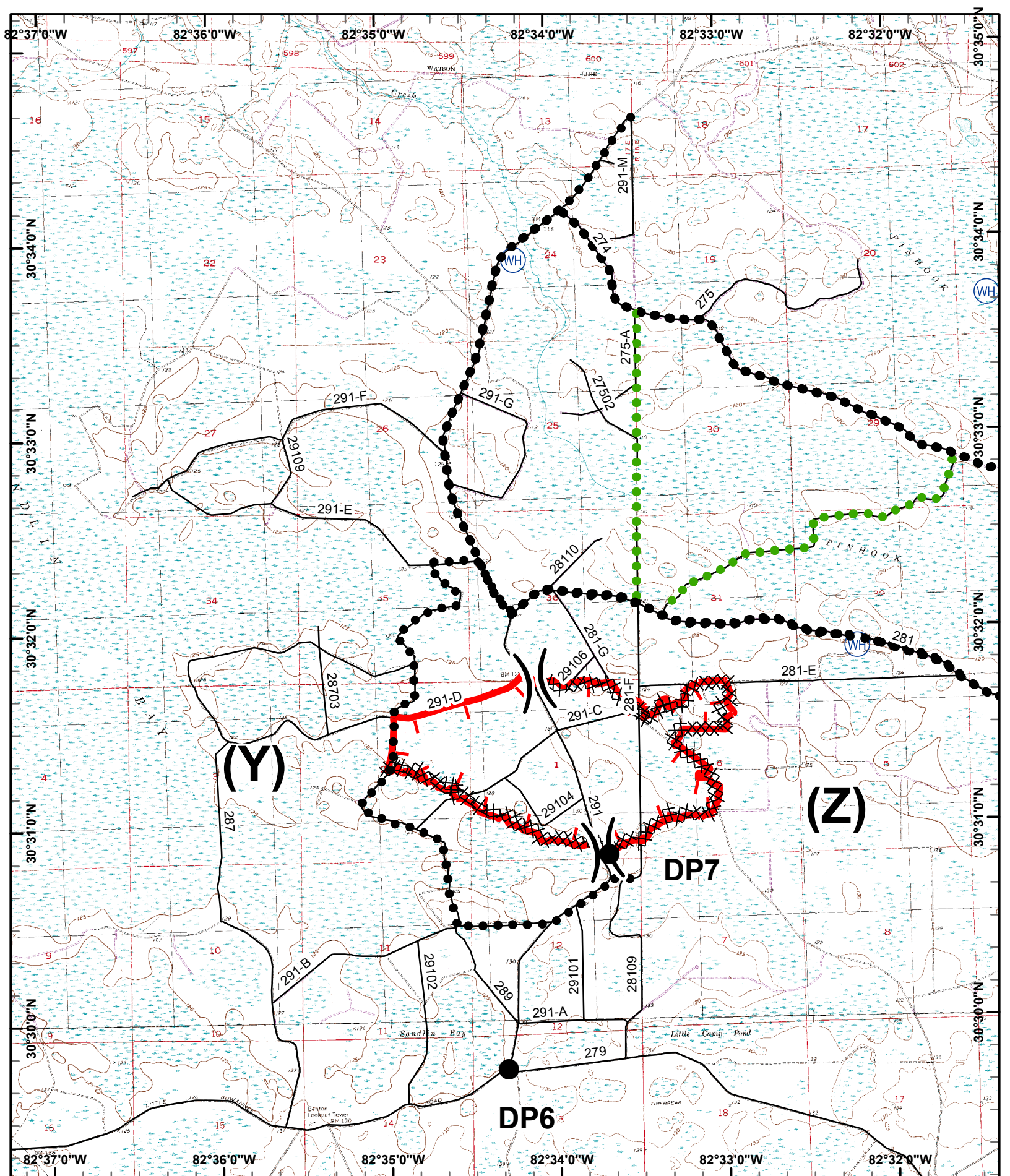



0 0.5 1 Miles





**Impassable Bay Fire**  
 June 26, 2011  
 FL-FNF-011023  
 11,305 Acres





- Division
- Helispot & Dipsite
- Active Fire Perimeter
- Drop Point
- Contingency Lines
- Water Source
- Dozer Line and Improved Line

Created June 25, 2011 1800  
s.peterson

0 0.5 1 Miles



**Kelly Rd Fire**  
**June 26, 2011**  
**FL-FNF-004131**  
 825 Acres