



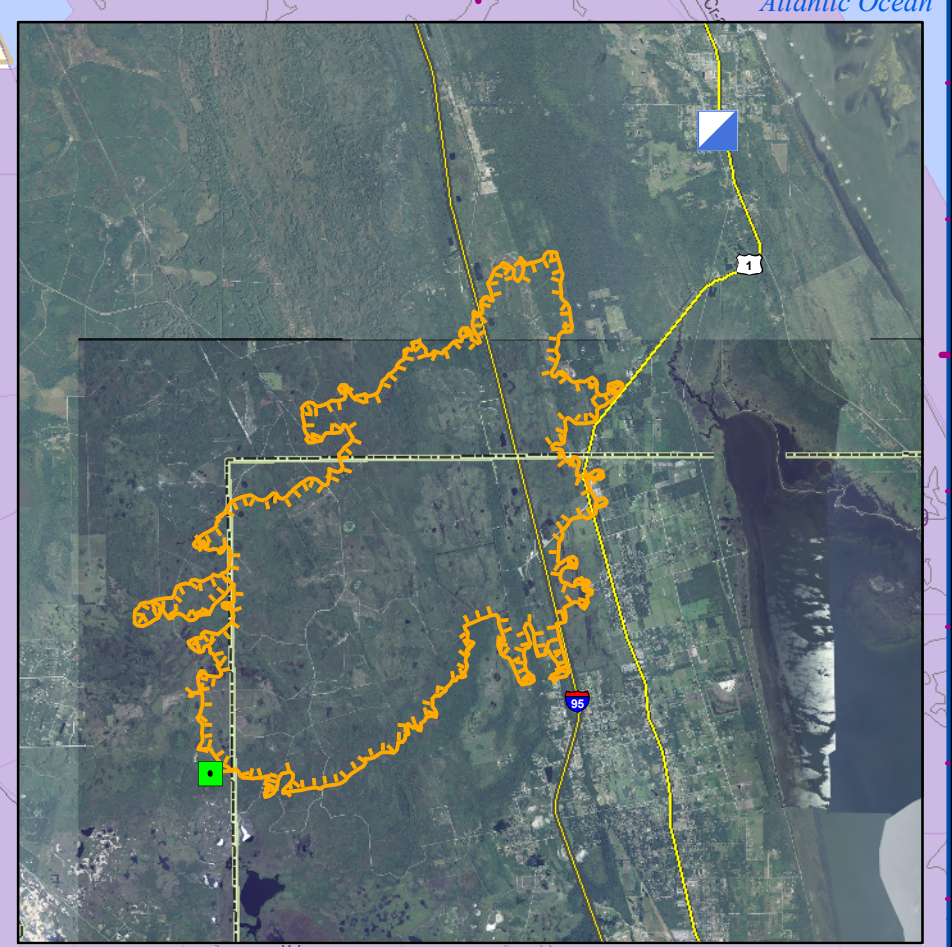
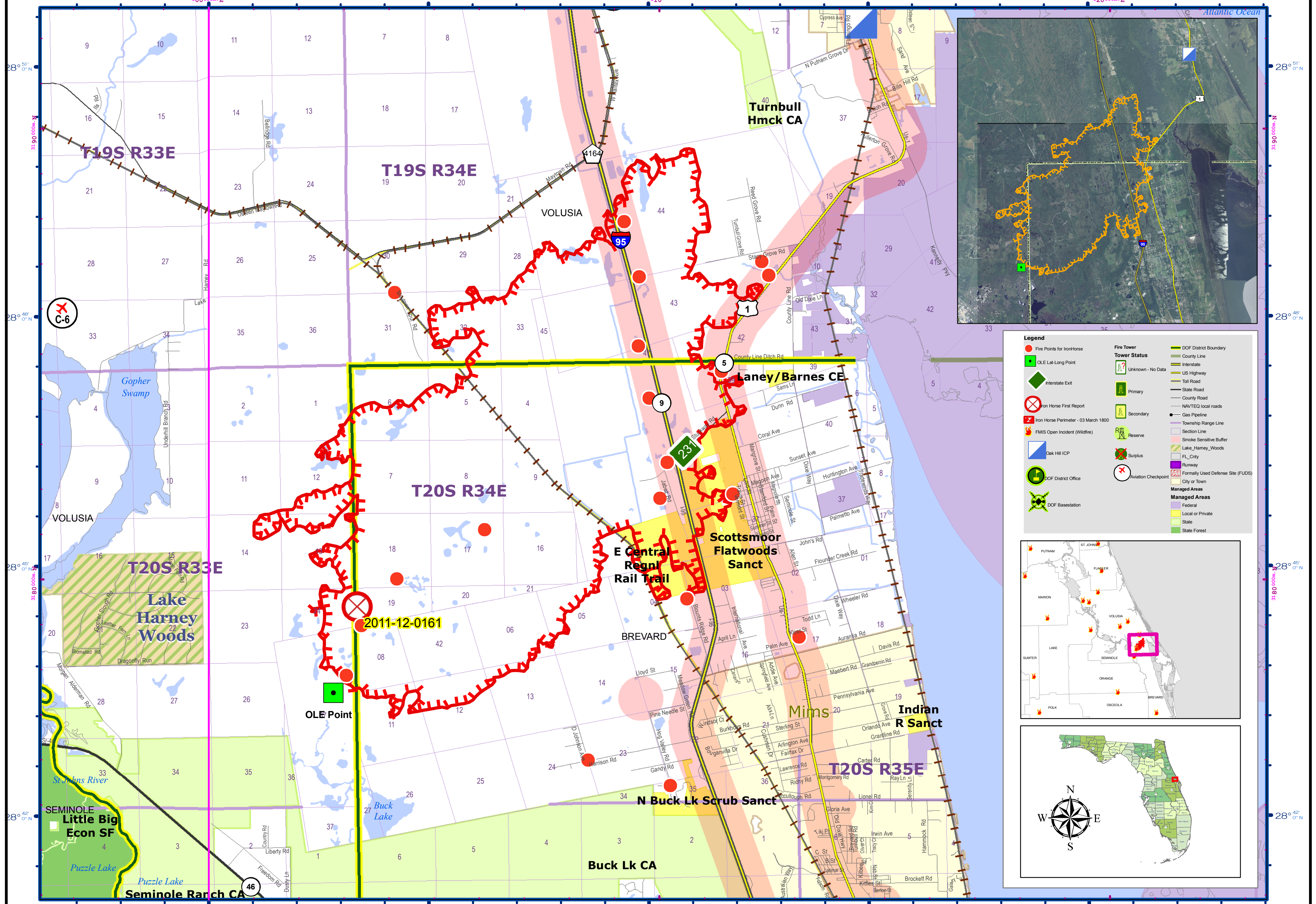
Florida Division of Forestry
 Map Date: 07 March 2011
 Managed Area boundaries courtesy of the Florida Natural Areas Inventory
 Formerly Used Defense Sites (FUDS) from the US Army Corps of Engineers
 Coordinate System: Universal Transverse Mercator (UTM) Zone 17
 High Accuracy Reference Network (HARN) Datum

IRON HORSE WILDFIRE - INCIDENT 2011-12-0161

GIS Acres: 16,615

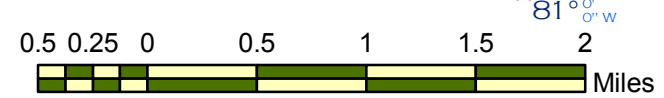
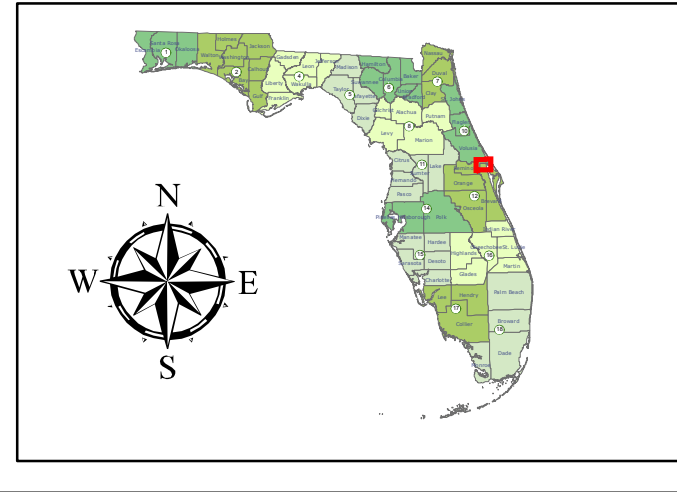
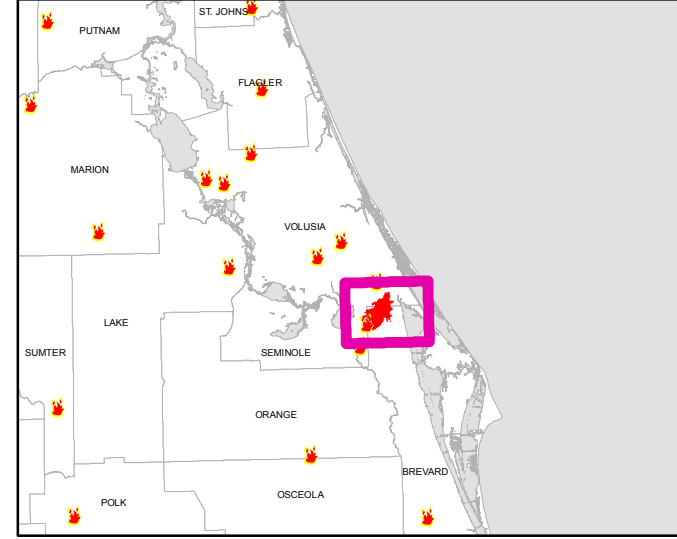
Brevard, Volusia Counties

DISCLAIMER:
 This map was created by the Florida Division of Forestry (DOF) Geographic Information System (GIS) staff using data from multiple sources. Maps created by DOF are designed for general use and for use by related public agencies; these products are not legal descriptions or documents.
 The Florida Division of Forestry reserves the right to correct, update, modify, or replace GIS products without notification. The Florida Division of Forestry makes no warranty, either written or implied as to the accuracy or completeness of the information on this map.



Legend

Fire Points for Iron-Horse	OLE Lat-Long Point	DOF District Boundary
Interstate Exit	Unknown - No Data	County Line
Iron Horse First Report	Primary	Interstate
Iron Horse Perimeter - 03 March 2011	Secondary	US Highway
FMIS Open Incident (Wildfire)	Reserve	Toll Road
Oak Hill ICP	Surplus	State Road
DOF District Office	Aviation Checkpoint	County Road
DOF Basestation	Formerly Used Defense Site (FUDS)	NAVTEG local roads
		Gas Pipeline
		Township Range Line
		Section Line
		Smoke Sensitive Buffer
		Lake_Harney_Woods
		FL_Cnty
		Runway
		City or Town
		Managed Areas
		Federal
		Local or Private
		State
		State Forest



Map Date: March 07, 2011 0830

