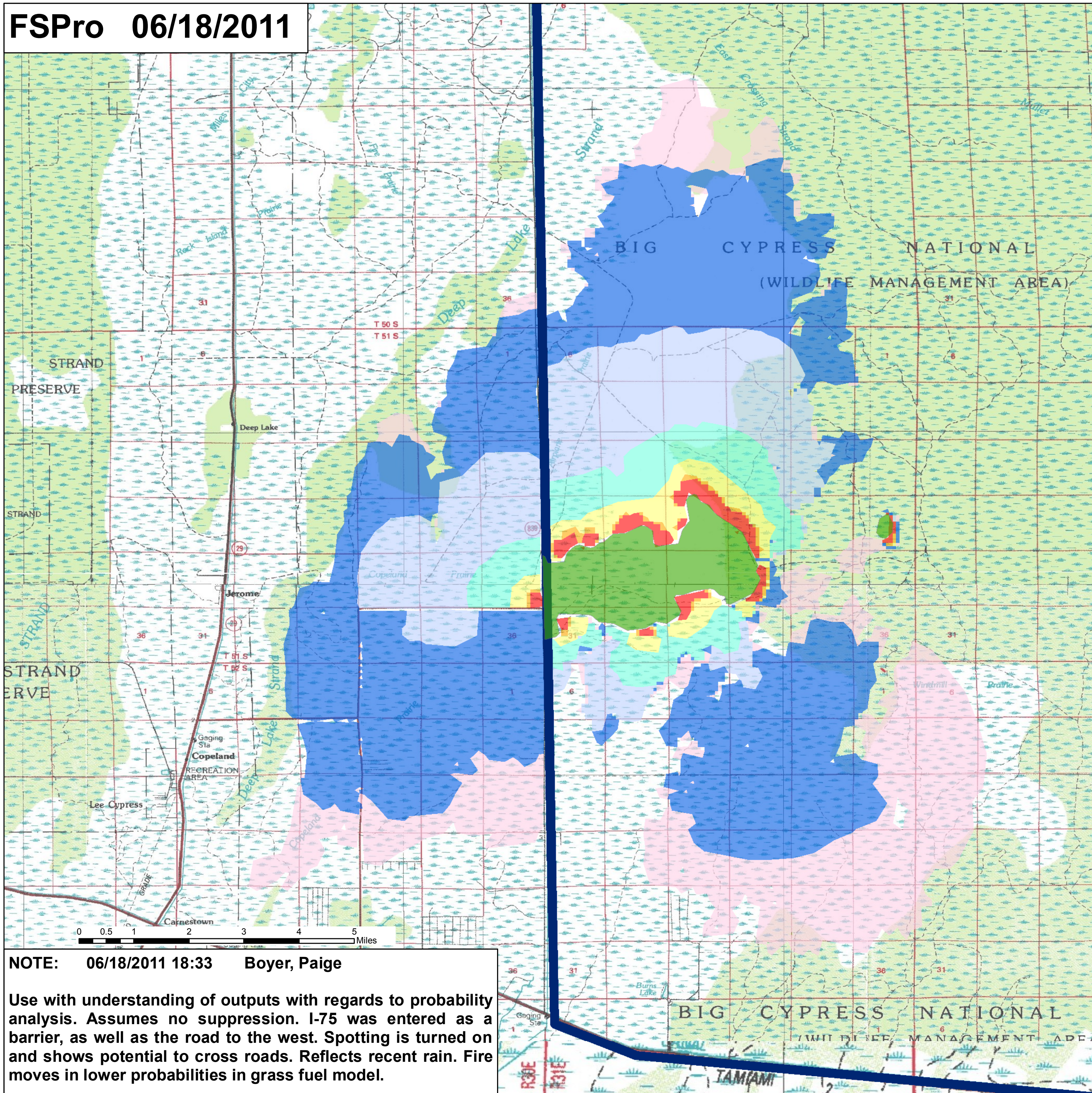




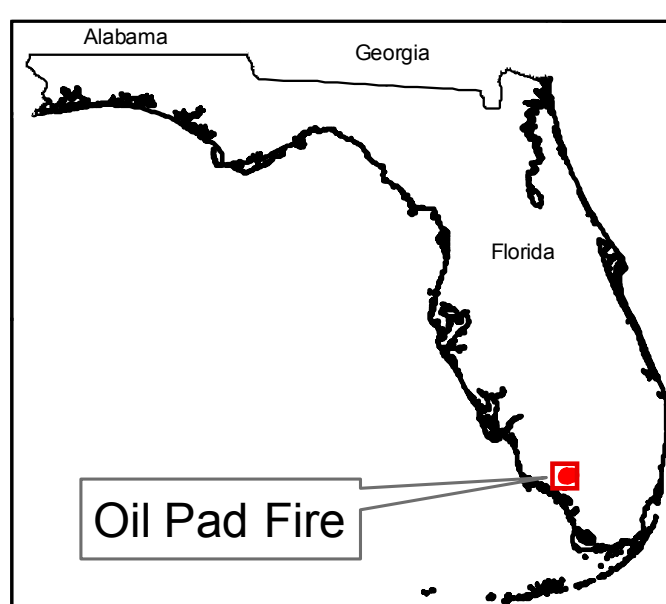
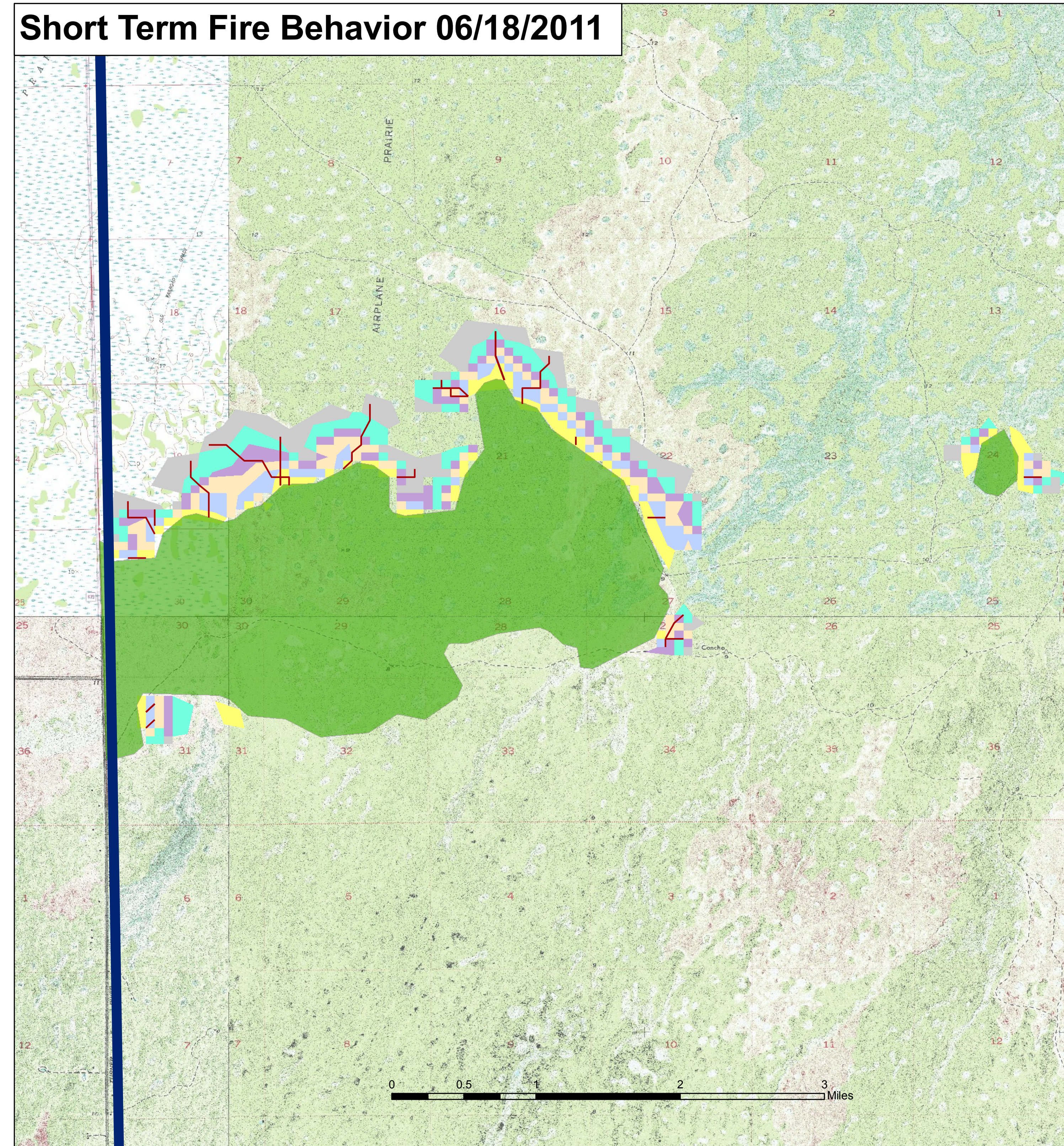
FSPro 06/18/2011



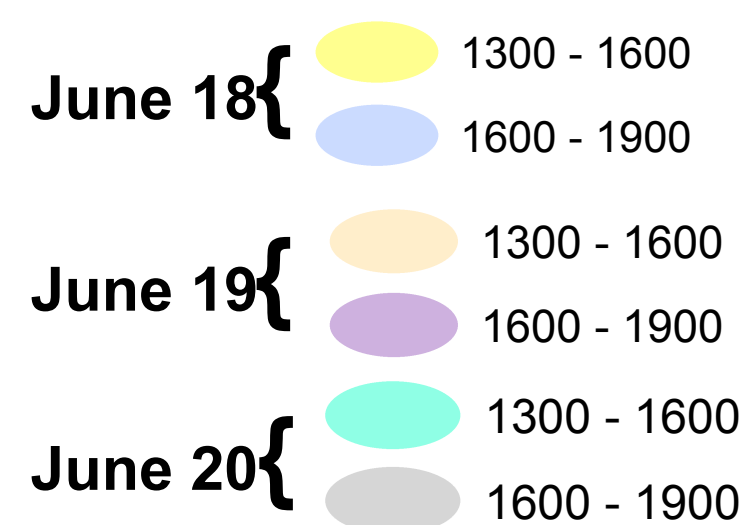
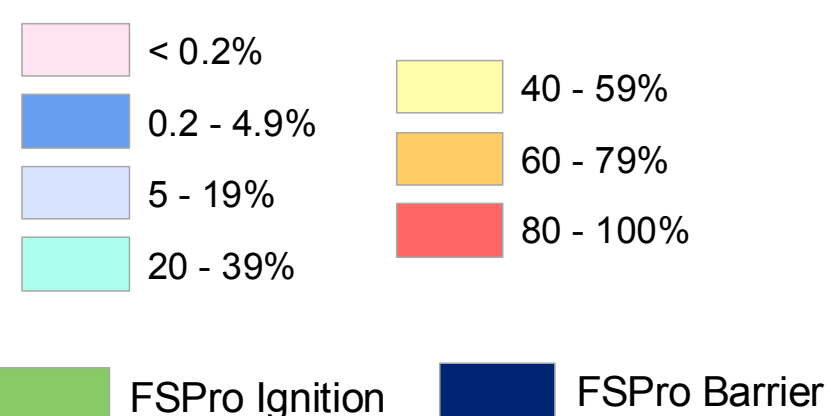
NOTE: 06/18/2011 18:33 Boyer, Paige

Use with understanding of outputs with regards to probability analysis. Assumes no suppression. I-75 was entered as a barrier, as well as the road to the west. Spotting is turned on and shows potential to cross roads. Reflects recent rain. Fire moves in lower probabilities in grass fuel model.

Short Term Fire Behavior 06/18/2011



FSPro Fire Spread Probability



Florida State Fire Marshal's Office
06/19/2011 07:30

Types of WFDSS Analysis:

- Short-Term Fire Behavior: 1-3 days. Right here, right now. A 'snapshot in time' as weather and wind conditions do not change for the length of the simulation period in the model.
- Near-Term Fire Behavior: 1-5 days (or the availability of forecast weather). The weather conditions change throughout the simulation duration of the model.
- FSPro: used when intelligence is desired beyond immediate, known, high-confidence forecasts. Commonly used when planning for incidents 7+ days into the future, as confidence in forecasts decreases with time. Many weather scenarios are simulated throughout the simulation duration of the model.

