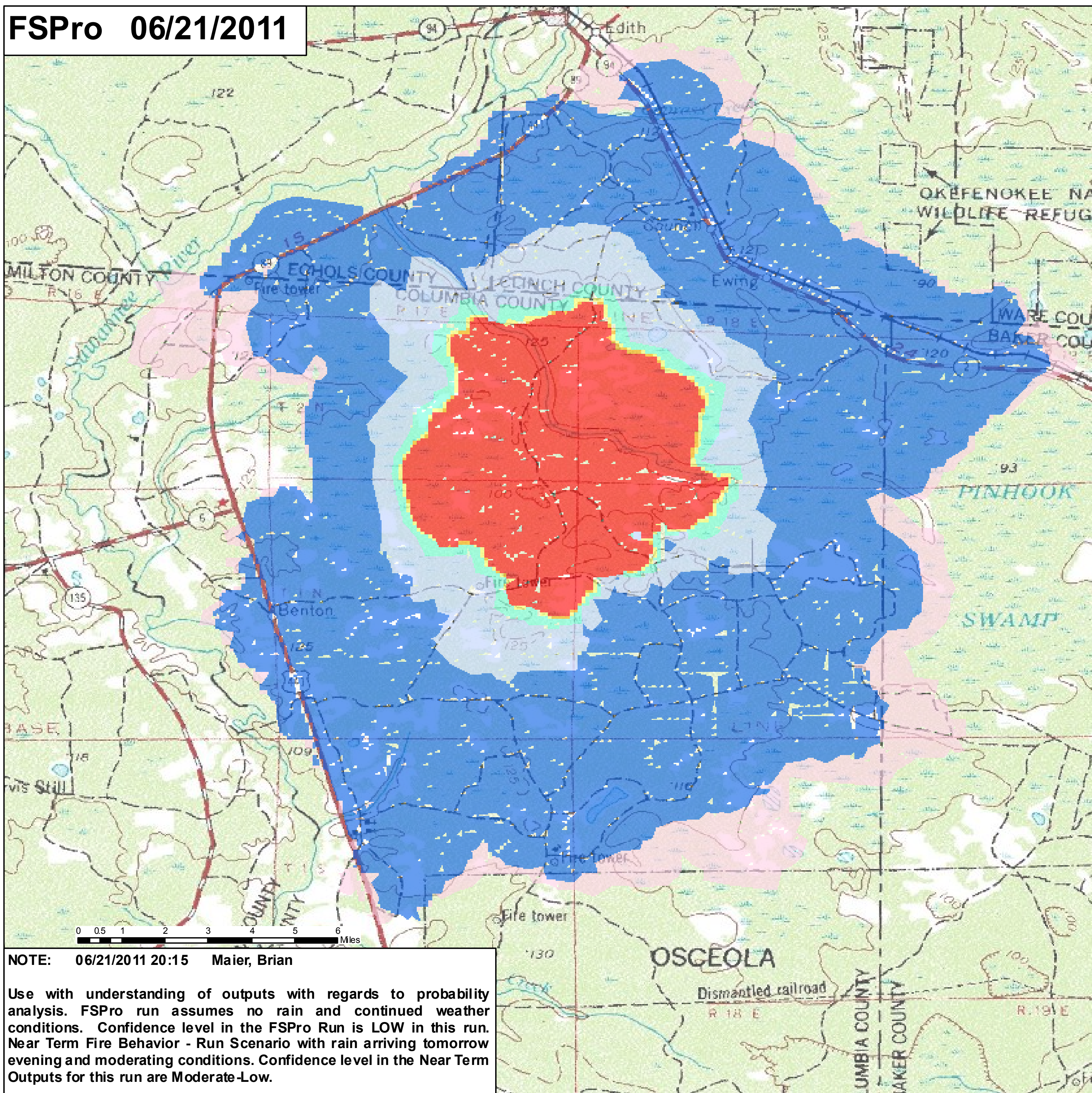




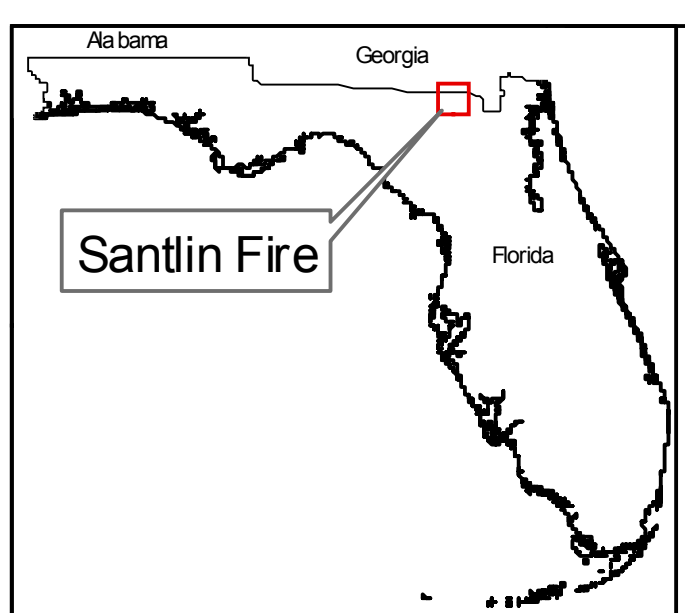
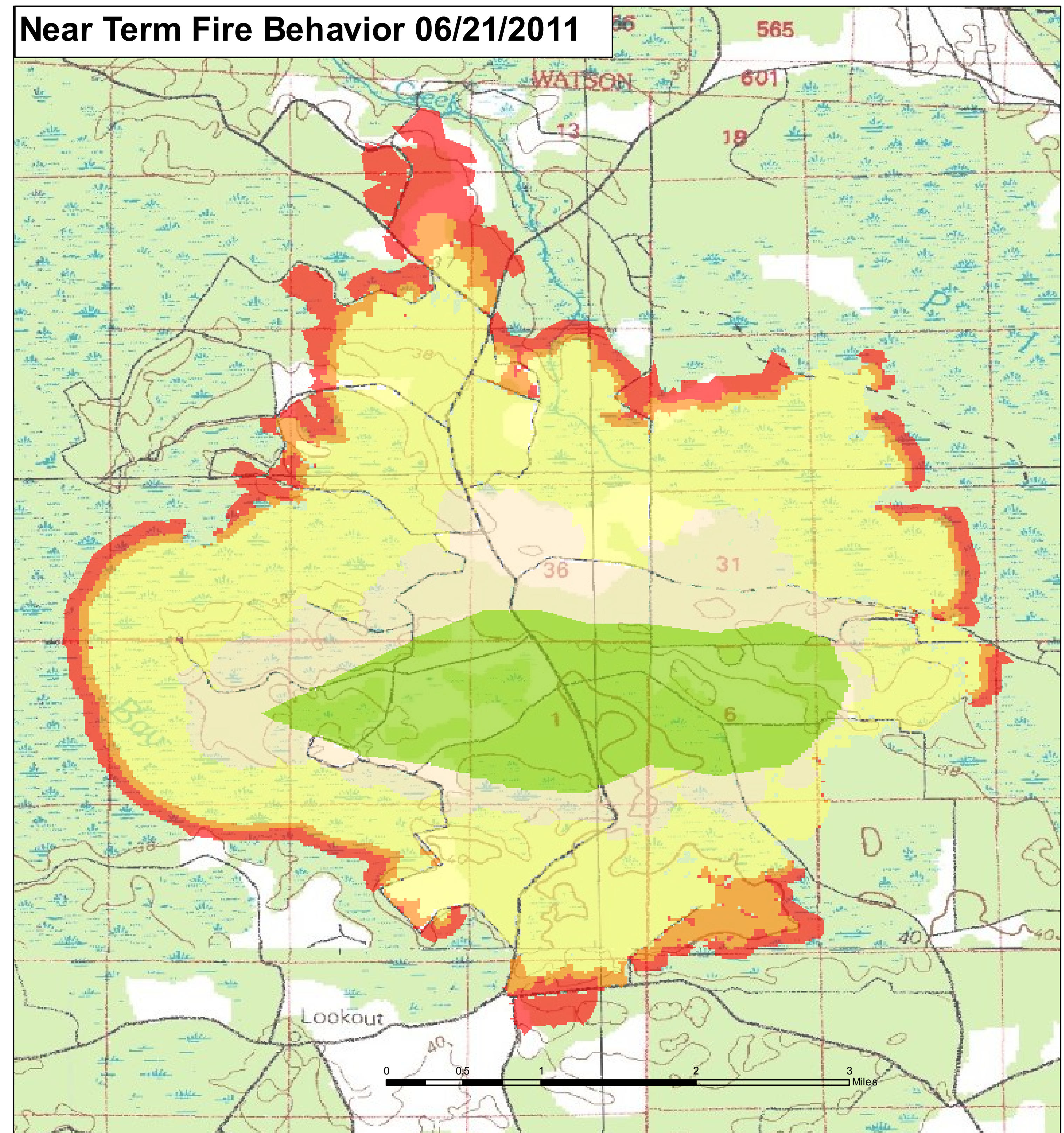
FSPro 06/21/2011



NOTE: 06/21/2011 20:15 Maier, Brian

Use with understanding of outputs with regards to probability analysis. FSPro run assumes no rain and continued weather conditions. Confidence level in the FSPro Run is LOW in this run. Near Term Fire Behavior - Run Scenario with rain arriving tomorrow evening and moderating conditions. Confidence level in the Near Term Outputs for this run are Moderate-Low.

Near Term Fire Behavior 06/21/2011



**FSPro Fire Spread Probability**

	< 0.2%		40 - 59%
	0.2 - 4.9%		60 - 79%
	5 - 19%		80 - 100%
	20 - 39%		

**Near Term Burn Periods**

	Ignition
	06/21/2011
	06/22/2011
	06/23/2011
	06/24/2011



WFDSS  
06/20/2011

Types of WFDSS Analysis:

- Short-Term Fire Behavior: 1-3 days. Right here, right now. A 'snapshot in time' as weather and wind conditions do not change for the length of the simulation period in the model.
- Near-Term Fire Behavior: 1-5 days (or the availability of forecast weather). The weather conditions change throughout the simulation duration of the model.
- FSPro: used when intelligence is desired beyond immediate, known, high-confidence forecasts. Commonly used when planning for incidents 7+ days into the future, as confidence in forecasts decreases with time. Many weather scenarios are simulated throughout the simulation duration of the model.

