

County Line Wildfire
Osceola National Forest

Incident Action Plan
Saturday April 14, 2012
Day Shift: 0700-1800
Night Shift 1800-0600



P-Code: P8GQ98
Fire Number: FL-FNF-012017

INCIDENT OBJECTIVES	1. INCIDENT NAME County Line Fire	2. DATE PREPARED 04/13/12	3. TIME PREPARED 2000									
4. OPERATIONAL PERIOD (DATE/TIME) 04/14/12 All Shifts												
5. GENERAL CONTROL OBJECTIVES FOR THE INCIDENT (INCLUDE ALTERNATIVES) <ol style="list-style-type: none"> 1. Provide for firefighter and public safety by following all established safety procedures & policies. 2. Keep the fire within Pinhook Swamp while managing in a cost effective manner considering the values at risk. 3. Minimize the impact to the timber industry. 4. Maintain a positive working relationship with all involved state, private and federal partners. 5. Respond to all reported initial attack fires within the Osceola NF and within the 10 mile initial attack response zone. 												
6. WEATHER FORECAST FOR OPERATIONAL PERIOD See Attached Weather Forecast												
7. GENERAL SAFETY MESSAGE See Attached Safety Message												
8. ATTACHMENTS (✓ IF ATTACHED) <table border="0" style="width: 100%;"> <tr> <td><input checked="" type="checkbox"/> ORGANIZATION LIST (ICS 203)</td> <td><input checked="" type="checkbox"/> MEDICAL PLAN (ICS 206)</td> <td><input checked="" type="checkbox"/> <u>Safety Message</u></td> </tr> <tr> <td><input checked="" type="checkbox"/> ASSIGNMENT LIST (ICS 204)</td> <td><input checked="" type="checkbox"/> Air Operations Summary (ICS 220)</td> <td><input checked="" type="checkbox"/> <u>Phone Contact List</u></td> </tr> <tr> <td><input checked="" type="checkbox"/> COMMUNICATIONS PLAN (ICS 205)</td> <td><input type="checkbox"/></td> <td><input checked="" type="checkbox"/> Incident Map</td> </tr> </table>				<input checked="" type="checkbox"/> ORGANIZATION LIST (ICS 203)	<input checked="" type="checkbox"/> MEDICAL PLAN (ICS 206)	<input checked="" type="checkbox"/> <u>Safety Message</u>	<input checked="" type="checkbox"/> ASSIGNMENT LIST (ICS 204)	<input checked="" type="checkbox"/> Air Operations Summary (ICS 220)	<input checked="" type="checkbox"/> <u>Phone Contact List</u>	<input checked="" type="checkbox"/> COMMUNICATIONS PLAN (ICS 205)	<input type="checkbox"/>	<input checked="" type="checkbox"/> Incident Map
<input checked="" type="checkbox"/> ORGANIZATION LIST (ICS 203)	<input checked="" type="checkbox"/> MEDICAL PLAN (ICS 206)	<input checked="" type="checkbox"/> <u>Safety Message</u>										
<input checked="" type="checkbox"/> ASSIGNMENT LIST (ICS 204)	<input checked="" type="checkbox"/> Air Operations Summary (ICS 220)	<input checked="" type="checkbox"/> <u>Phone Contact List</u>										
<input checked="" type="checkbox"/> COMMUNICATIONS PLAN (ICS 205)	<input type="checkbox"/>	<input checked="" type="checkbox"/> Incident Map										
9. PREPARED BY (PLANNING SECTION CHIEFS) Phil Weston/Marg Olson	10. APPROVED BY (INCIDENT COMMANDER) /S/Mike Dueitt											

ORGANIZATION ASSIGNMENT LIST		9. Operations Section	
1. Incident Name: County Line Wildfire		Day	Marty Bentley/P. Kubiak/ J. Schardt (t) /G.Brooks(t)
		Night	Fenn Wimberly
		a. Branch 1 – Divisions/Groups	
2. Date: 4/13/12	3. Time:1900	Division/Group A/D	Randy Prewitt/Chad Cook (t)
		Division/Group J/G	T. Woody/S. Nagle (t)
4. Operational Period: April 14, 2011		Division/Group M	Deb Casto
		Division/Group P	Jamie Atkins/ M. Drayton (t)
5. Incident Commander and Staff		Division/Group S	Miranda Stuart
Incident Commander	Mike Dueitt	Division/Group V	Jerran Flanders/B. Galbraith (t)
Deputy Incident Commander	Steve Parrish (t)	Division/Group W	David McFee
Safety Officers	B. Lidell/L. Holsomback/ T. Krueger/D. Neal/ K. Davenport/G. Stapleton B. Kelly (t)		
Information Officers	B. Strawser/ J. Bearer	Division/Group Night	Mark Sullivan/Dan McDonald Mitch Ketron (t)
6. Agency Representatives		Group Contingency - DIVS	D. Donohue/D. Grettenberg (t)
Agency	Name	Group – IA	Mike Bot
USFS	Chad Hudson		
FL-FSS	John Raulerson		
GOAL	Jim Barrett		
Okefenokee NWR	Curt McCasland	b. Branch II - Divisions/Groups	
Community Liaison	Ivan Green		
READ	Scott Ray		
The Forestry Company	Don Curtis	Branch Director	
7. Planning Section		Deputy	
Chiefs	Marg Olson/Phil Weston	Division/Group	
Resource Unit Leader	Jo Ann Smith/Bob Gray	Division/Group	
Resources Unit Leader	Melonie Sellers (t)	Division/Group	
Status/Checkin Recorder	Sarah Davis	Division/Group	
Situation Unit Leader	Jeff DeMatteis	Division/Group	
Situation Unit Leader (t)	Vince Carver		
Demobilization Unit Leader	Dan Belanger	c. Air Operations Branch	
FBAN	Gary Jarvis	Air Operations Branch Director	Bruce Wicks
IMET	Rick Davis	Air Attack Group Supervisor	Greg Haxby
GISS	Lori Pittman	Air Support Group Supervisor	Mike Rock
GISS (t)	Jaclyn Solodovnick	Helibase Manager	Robin Vinovich
Training Specialist	James Mason	Helicopter Coordinator	Bob Lehigh
CTSP	Rusty Brown	10. Finance Section	
LTAN	Caroline Noble		
THSP - Smoke	Anthony Matthews	Chief	Sandra Morris
8. Logistics Section		Trainee	Bonita Johnson
Chief	Bob Harrel /Jerry Jussila	Time Unit Leader	K. Winkler (t)/S. Mattox (t)
Trainee	Peter Dybing	Comp/Claims Unit Leader	
Supply Unit Leader	Duane Cihlar	Cost Unit Leader	David Glass/Holly Cyprian(t)
Facilities Unit Leader	Deborah Walker	Procurement Unit Leader	Sue Yeager
Ground Support Unit Leader	Steven 'Todd' Waller		
Ordering Manager	Tom Piper	Prepared by (Planning Section Chief) Phil Weston	
Medical Unit Leader	Tim Exline		
Security Unit	Greg Blanks/Chris Cason		
Communications Unit Ldr	Larry Garrett		



Fire Weather Forecast



FORECAST NO: 5

NAME OF FIRE: County Line Wildfire

PREDICTION FOR: All Shifts

UNIT: Osceola National Forest ICP

SHIFT DATE: Saturday, April 14, 2012

SIGNED: *Rick Davis* Incident Meteorologist
240-778-5277 or 941-524-2957

TIME AND DATE

FORECAST ISSUED: 2000 EDT April 13, 2012

WEATHER DISCUSSION:

Western Atlantic High pressure will continue to ridge back into the Deep South with easterly low level flow continuing over the fire area. Moisture will continue to slowly increase today as the late afternoon into evening sea breeze surge moves into the area. Low level flow will veer southeast to southerly continuing the warming and moist trend through the weekend and into early next week.

.Today...

Sky/Weather.....Partly Cloudy. Areas of Dense Smoke and Fog in the Morning.
Max Temperature.....81 to 83 Degrees.
Min Humidity..... 40 to 45 Percent.
Wind (20 FT).....Northeast Winds 3 to 5 MPH early in the morning, then becoming East 6 to 8 MPH with gusts around 12 MPH mid day, then becoming Southeast 10 to 12 MPH with gusts 15 to 20 mph in the afternoon.
LAL..... 1.
Mixing Height.....300 to 800 FT AGL in the Morning increasing to 5500-6500 FT AGL.
Mixing Winds..... Southeast around 15.
Dispersion Index.....2 to 3 in the Morning increasing to 45 to 55.
LVORI..... 9-10 in the Morning.

.Tonight...

Sky/Weather.....Partly Cloudy. Areas of Dense Smoke and Fog in the Morning.
Min Temperature.....55 to 60 Degrees.
Max Humidity.....95 to 100 Percent.
Wind (20 FT).....Southeast Winds 8 to 10 MPH with gusts around 12 MPH until midnight then decreasing to 2 to 4 MPH.
LAL..... 1.
Mixing Height.....3000-4000 FT AGL decreasing to 200-600 FT AGL.
Mixing Winds..... Southeast 8 to 10 MPH decreasing to 2 to 4 MPH.
Dispersion Index.....2-3.
LVORI.....9-10.

.Sunday...

Sky/Weather.....Partly Cloudy. Areas of Dense Smoke and Fog in the Morning.
Max Temperature.....82 to 84 Degrees.
Min Humidity.....40 to 45 Percent.
Wind (20 FT).....Southeast Winds 3 to 5 MPH early in the morning increasing to 8 to 10 MPH with gusts to around 15 mph by the afternoon..
LAL..... 1.
Mixing Height.....200 to 600 FT AGL increasing to 5000 to 6000 FT AGL.
Mixing Winds..... Southeast around 10 MPH.
Dispersion Index.....40 to 50.

FIRE BEHAVIOR FORECAST

Fire: County Line	Unit: FL-FNF	Prediction for <u>Day, Swing and Night Shift</u>
Forecast # 06 Issued: 04/13/2012 2000 hrs	Signed: Gary Jarvis 202.379.6993 /s/ Gary Jarvis	Shift Date: Saturday 04/14/2012

GENERAL FIRE BEHAVIOR

Fuels are predominately Fuel Model (FM) 7 (Southern Rough) in the uplands and FM4 (heavy brush) in the swamp. Large to moderate acreage tracts of commercial timberland are mixed in throughout the entire perimeter surrounding the forest. Fast moving wildfires with extremely high flame lengths and rapid rates of spread can occur within the swamp. As fire transitions to the upland, torching and crown fires are common. Long Range spotting is possible if fire becomes plume dominated.

Indicators of Increased Fire Activity

- | | |
|---|---|
| <ul style="list-style-type: none"> • Relative humidity dropping below 45% • Winds above 10 mph • Heavy fuel loadings | <ul style="list-style-type: none"> • Fine dead fuel moisture 8% or less • Dispersion above 70 |
|---|---|

SPECIFIC FIRE BEHAVIOR Fuels within the perimeter of the "Swamp" consist of a variety of species. Lyonia (Fetter Bush) and Gallberry dominate shrub fuels within the interior and have the ability to cause intense heat buildup along a flaming front. Firebrands can and will come out of these swamps if fire reaches the canopy.

Strands of pine occur near the upland extending into the interior of the swamp. These strands increase the possibility of torching and crown fires as it moves into the upland fuels.

Pine stands with brush understory predominately make up the upland. These stands increase the possibility of torching and crown runs. These fuels are very receptive of spotting.

All Divisions:

Fuel Type	Rates of Spread	Flame Length	Spotting Distance	Firebrand Ignition
Winds at 8 - 12, G 15-20 mph @ 20'				
Shrub Fuels	40 - 150 ch/hr.	8 -13 feet	.2 mile	50%
Southern Rough	16 - 39 ch/hr	4 - 7 feet	.2 mile	50%
Timber Litter-Reburn	6 - 17 ch/hr.	2 - 4 feet	N/A	50%
Small Pine Plantation w/grasses	19 - 65 ch/hr	4 - 8 feet	.2 mile	50%

One hour fine dead fuel moisture will drop to around 6%. 10 hour fuels 10% 1000 hour fuels range from 16%.

Should a fire run(s) occur, expect winds in the area to potentially increase above predicted levels. This would increase Flame Lengths and ROS above predictions. Heavier firebrands can also be lifted higher and further increasing likelihood of spots to max predictions.

Initial Attack - In areas where fuels have been herbicided, expect quick ignitions and extreme heat, very fast.

Air Operations: Heavy smoke predicted in the morning but clearing before noon. It should be a good day for air operations in the afternoon.

SAFETY:

Expect new fire starts and/or spots from existing fire to ignite easily, spread rapidly and burn with great intensity. This alignment of forecasted weather along with dry fuels has the potential to create critical safety concerns for firefighters and the public.

The safety of firefighters and public remain our first priority.

Division Assignment List			1. Branch		2. Division/Group A/D		
3. Incident Name COUNTY LINE			4. Operational Period 04/14/12 Saturday Day Shift 0700 - 1800				
5. Operations Personnel							
Operations Chief		MARTY BENTLEY, PETE KUBIAK		Division/Group Supervisor		RANDY PREWITT/CHAD COOK (t)	
Operations Chief (t)'s		GREG BROOKS, JEFFERY SCHARDT		Air Attack Supervisor		GREG HAXBY	
Branch Director				Safety Officer		BRAD LIDELL/LARRY HOLSOMBACK	
6. Resources Assigned this Period							
Strike Team/Task Force/ Resource Designator		Leader		Num of Pers.	Trans. Y/N	Drop Off PT./Time	Pick Up PT./Time
GSMNP BURN MODULE O-108		SHANE PAXTON		6	N		
O-81 TFLD		4/24 GORDON GROSSLIGHT		1	N		
O-71 TFLD(t)		4/21 ANDY PLAZA		1	N		
E-5 ENG6/ KY-DBF-111		4/21 WILLARD WORLEY		3	N		
E-21 ENG6 /NM-SNF		4/24 RYAN MONTOYA		3	N		
E-53 ENG6/ CO-PBC/CASTLEROCK4/25		TAD ANDERSON		3	N		
E-54 ENG6/ NORTHWEST FPD		4/25 KRISTALYN OLME		3	N		
E-57 ENG6/ ATTACK-ONE FIRE		4/23 CARLO GUTIRREZ		3	N		
E-67 ENG6/ CHOCTAW		4/25 RAYMOND LUDLOW		3	N		
E-66 ENG6/ #66		4/24 LOUIS MAIGE		3	N		
O-74 HEQB		4/24 ANDY MANNING		1	N		
E-10 TPL2/ SU62/63		4/20 RYAN MASON		1	N		
E-11 TPL2/ SU64/65		4/20 A. KENT		1	N		
STDZ		JAMES ROURKS		1	N		
DO22/ TFC 36 /PRIVATE		SAVELL SCHMIDT		1	N		
DO22/TFC 37 /PRIVATE		THAD YOUNG		1	N		
WT FORESTRY CO./PRIVATE							
E-27 EXCAVATOR/PVT CAT 311		ROT CONSTRUCTION		1	N		
7. Control Operations :							
Mop-up within 150' of line. Forestry Co. Water Tender parked at DP #34.							
8. Special Instructions							
Utilize backers when backing up. Soft spots in the sand surface roads can cause your vehicle to shift abruptly. Stay alert to changing conditions. Fuels are dry and fire danger is predicted to be extreme. Don't be surprised by the fire behavior and plan your activities based on current and predicted weather. Snag Safety/Lookup-Look Around.							
9. Division/Group Communications Summary							
Function	Frequency - RX	Frequency - TX	Tone	System	Channel	System	Channel
Command	171.5500	171.5500	000.0	King	1		
Tactical Div/Group	154.2650	154.2650		King	10		
Logistics							
Air to Ground	168.6750	168.6750		King	14		
Prepared by (Resource Unit Leader) Jo Ann Smith			Approved by (Planning Section Chief) Phil Weston		Date Prepared 04/13/12	Time Prepared 0907	

Division Assignment List		1. Branch		2. Division/Group J/G			
3. Incident Name COUNTY LINE		4. Operational Period 04/14/12 Saturday Day Shift 0700 - 1800					
5. Operations Personnel							
Operations Chief	MARTY BENTLEY, PETE KUBIAK		Division/Group Supervisor	TIM WOODY, SHAWN NAGLE (T)			
Operations Chief (t)'s	GREG BROOKS; JEFFERY SCHARDT		Air Attack Supervisor	GREG HAXBY			
Branch Director			Safety Officer	KEN DAVENPORT			
6. Resources Assigned this Period							
Strike Team/Task Force/ Resource Designator	Leader	Num of Pers.	Trans. Y/N	Drop Off PT./Time	Pick Up PT./Time		
O-17 TFLD	TIM WHARTON	1	N				
E-19 ENG6/ OK-COA	JERRY FLETCHER	3	N				
E-48 ENG6/ FT. APACHE ENG5263	MARCUS BONITA SR.	3	N	DP25			
E-56 ENG6/ ATTACK ONE	KNIGHT	3	N				
E-59 ENG6/ CRANES	M. THOMAS	3	N				
O-80 HEQB	RON ROCKIS	1	N				
E-40 TPL2 / FL ST.MARK	BILLY JOE LORD	1	N				
E-78.1 TPL2/ FLS S/T		1	N				
E-78.2 TPL2/ FLS S/T		1	N				
E-78.3 TPL2/ FLS S/T		1	N				
E-78.4 TPL2/ FLS S/T		1	N				
E-28 MARSHMASTER LS-NWR	ANTHONY DIMAGGIO	1	N				
E-89 WAT3 10/BAKER CO.	ANDY ANDERSON	1	N				
E-90 WAT3 40/BAKER CO.	BRITTIN HOLLAR	1	N				
7. Control Operations							
Provide structure protection. Mop up all smokes within 100 feet. Snag Safety/Look-up-Look Around.							
8. Special Instructions							
Utilize backers when backing up. Soft spots in the sand surface roads can cause your vehicle to shift abruptly. Stay alert to changing conditions. Fuels are dry and fire danger is predicted to be extreme. Don't be surprised by the fire behavior and plan your activities based on current and predicted weather.							
9. Division/Group Communications Summary							
Function	Frequency - RX	Frequency - TX	Tone	System	Channel	System	Channel
Command	171.5500	172.3750	146.2	King	4		
Tactical Div/Group	154.2950	154.2950		King	12		
Logistics							
Air to Ground	168.6750	168.6750		King	14		
Prepared by (Resource Unit Leader) Jo Ann Smith		Approved by (Planning Section Chief) Phil Weston			Date Prepared 04/13/12		Time Prepared 0941

Division Assignment List			1. Branch		2. Division/Group M		
3. Incident Name COUNTY LINE			4. Operational Period 04/14/12 Saturday Day Shift 0700 - 1800				
5. Operations Personnel							
Operations Chief		MARTY BENTLEY, PETE KUBIAK			Division/Group Supervisor		DEB CASTO/MARY OWENS (t)
Operations Chief (t)'s		GREG BROOKS; JEFFERY SCHARDT			Air Attack Supervisor		GREG HAXBY
Branch Director					Safety Officer		KEN DAVENPORT
6. Resources Assigned this Period							
Strike Team/Task Force/ Resource Designator		Leader		Num of Pers.	Trans. Y/N	Drop Off PT./Time	Pick Up PT./Time
E-58 ENG6/ NATIONAL FIRE 5 4/23		JERRY HORTON		3	N		
E-62 ENG6/ NATIONAL FIRE 4 4/24		JOHN KEYTON		3	N		
O-48 HEQB 4/23		JOE BUNTON		1	N		
E-12 TPL2 /FL-FSS/TALLA 51 4/21		JAMES SHIVER		1	N		
E-13 TPL2/ FL-FSS/TALLA 79 4/21		MILTON SCHULER		1	N		
E-83 MARSHMASTER GA-OKR 4/24		ROCKY CHESSER		2	N		
7. Control Operations Mop up and hold line within 50 feet. Snag Safety-Lookup/Look Around.							
8. Special Instructions Utilize backers when backing up. Soft spots in the sand surface roads can cause your vehicle to shift abruptly. Stay alert to changing conditions. Fuels are dry and fire danger is predicted to be extreme. Don't be surprised by the fire behavior and plan your activities based on current and predicted weather.							
9. Division/Group Communications Summary							
Function	Frequency - RX	Frequency - TX	Tone	System	Channel	System	Channel
Command	171.5500	172.3750	146.2	King	4		
Tactical Div/Group	154.2950	154.2950		King	12		
Logistics							
Air to Ground	168.6750	168.6750		King	14		
Prepared by (Resource Unit Leader) Jo Ann Smith			Approved by (Planning Section Chief) Phil Weston		Date Prepared 04/13/12		Time Prepared 0948

Division Assignment List		1. Branch		2. Division/Group S			
3. Incident Name COUNTY LINE		4. Operational Period 04/14/12 Saturday Day Shift 0700 - 1800					
5. Operations Personnel							
Operations Chief	MARTY BENTLEY, PETE KUBIAK			Division/Group Supervisor	MIRANDA STUART		
Operations Chief (t)'s	GREG BROOKS, JEFFERY SCHARDT			Air Attack Supervisor	GREG HAXBY		
Branch Director				Safety Officer	KENT DAVENPORT		
6. Resources Assigned this Period							
Strike Team/Task Force/ Resource Designator		Leader		Num of Pers.	Trans. Y/N	Drop Off PT./Time	Pick Up PT./Time
O-75 STEN 4/24		SHANE MCGOWAN		1	N		
E-61 WILDLAND FIRE SERVICE S/T#2 4/23		DOUG SCOTT		3	N		
E-65 WILDLAND FIRE SERVICE S/T#3 4/23		SAUL IRVIN		3	N		
E-63 WILDLAND FIRE SERVICE S/T#4 4/23		DAVE HARDY		3	N		
E-64 WILDLAND FIRE SERVICE S/T#5 4/23		OPAL FULTON		3	N		
E-60 WILDLAND FIRE SERVICE S/T#8 4/23		GLEN HILL		3	N		
O-49 HEQB 4/21		TODD WOOTEN		1	N		
E-41 TPL2 /GA-OKR-54 4/24		ADAM McCULLOUGH		2	N		
E-87 WT3/ORANGE SPRINGS		RICHARD POWELL		1	N		
7. Control Operation:							
Travel with caution on Hwy 2. Mop up 200 feet in when possible. Snag Safety/Look up and Look around.							
8. Special Instructions							
Utilize backers when backing up. Soft spots in the sand surface roads can cause your vehicle to shift abruptly. Stay alert to changing conditions. Fuels are dry and fire danger is predicted to be extreme. Don't be surprised by the fire behavior and plan your activities based on current and predicted weather.							
E-113 Fuel Tender/Tim Prep, Inc., staged at intersection Hwy 2 & FS Road 295.							
9. Division/Group Communications Summary							
Function	Frequency - RX	Frequency - TX	Tone	System	Channel	System	Channel
Command	171.5500	172.3750	146.2	King	4		
Tactical Div/Group	168.4750	173.8125		King	8		
Logistics							
Air to Ground	168.6750	168.6750		King	14		
Prepared by (Resource Unit Leader) Jo Ann Smith			Approved by (Planning Section Chief) Phil Weston		Date Prepared 04/13/12		Time Prepared 1100

Division Assignment List		1. Branch		2. Division/Group V			
3. Incident Name COUNTY LINE		4. Operational Period 04/14/12 Saturday Day Shift 0700 - 1800					
5. Operations Personnel							
Operations Chief	MARTY BENTLEY; PETE KUBIAK		Division/Group Supervisor	JERRAN FLINDERS/B. GALBRAITH			
Operations Chief (t)'s	GREG BROOKS; JEFFERY SCHARDT		Air Attack Supervisor	GREG HAXBY			
Branch Director			Safety Officer	BRAD LIDELL/LARRY HOLSOMBACK			
6. Resources Assigned this Period							
Strike Team/Task Force/ Resource Designator		Leader		Num of Pers.	Trans. Y/N	Drop Off PT./Time	Pick Up PT./Time
SMOKE JUMPER MODULE 4/21		BRENT JOHNSON		3	N		
O-18 TFLD		BILL CROLLY		1	N		
E-14 ENG6/GA-CHF-061		CURTIS SHELL		2	N		
E-15 ENG6/GA-CHF-641		SCOTT ROPER		2	N		
E-18 ENG6/NM-CAF		JOE TRUJILLO		3	N		
E-49 ENG6 /AZ-COF 4-86		JAMES BURTON		3	N		
E-7 TPL3 SC-SRF		MOZELL BROOKER		2	N		
7. Control Operations Mop-Up within 200 feet of line. Snag Safety/Look up and Look around.							
8. Special Instructions Utilize backers when backing up. Soft spots in the sand surface roads can cause your vehicle to shift abruptly. Stay alert to changing conditions. Fuels are dry and fire danger is predicted to be extreme. Don't be suprised by the fire behgavior and plan your activities based on current and predicted weather.							
9. Division/Group Communications Summary							
Function	Frequency - RX	Frequency - TX	Tone	System	Channel	System	Channel
Command	171.5500	172.3750	146.2	King	4		
Tactical Div/Group	154.2800	154.2800		King	11		
Logistics							
Air to Ground	168.6750	168.6750		King	14		
Prepared by (Resource Unit Leader) Jo Ann Smith			Approved by (Planning Section Chief) Phil Weston		Date Prepared 04/13/12		Time Prepared 1118

Division Assignment List			1. Branch		2. Division/Group W			
3. Incident Name COUNTY LINE			4. Operational Period 04/14/12 Saturday Day Shift 0700 - 1800					
5. Operations Personnel								
Operations Chief		MARTY BENTLEY, PETE KUBIAK		Division/Group Supervisor		DAVE MCFEE/CHAD COOK (t)		
Operations Chief (t) 's		GREG BROOKS; JEFFERY SCHARDT		Air Attack Supervisor		GREG HAXBY		
Branch Director				Safety Officer		BRAD LIDELL/LARRY HOLSOMBACK		
6. Resources Assigned this Period								
Strike Team/Task Force/ Resource Designator			Leader		Num of Pers.	Trans. Y/N	Drop Off PT./Time	Pick Up PT./Time
E-3	ENG6/NC-NCF	4/20	NATHAN DEWHURST		3	N		
E-22	ENG6/AL-ALF	4/23	DOUGLAS GILLILAND		3	N		
E-50	ENG6 /#672		JESSE SEARLES		3	N		
E-51/	ENG6/PLATTE CANYON 2	4/26	ROSS DUNN		3	N		
E-52/	ENG6/PLATTE CANYON 4	4/26	CODY COX		3	N		
E-42	T3 DOZER /MO-MTF	4/26	JIMMY KAMINSKI		2	N		
E-25	EXCAVATOR/JOHN DEER		ROT CONSTRUCTION		1	N		
7. Control Operations								
Mop-Up within 150 feet of line. Dozer Blade improvement on Road 274. Snag Safety/Look-up-Look Around.								
8. Special Instructions								
Utilize backers when backing up. Soft spots in the sand surface roads can cause your vehicle to shift abruptly. Stay alert to changing conditions. Fuels are dry and fire danger is predicted to be extreme. Don't be suprised by the fire behgavior and plan your activities based on current and predicted weather.								
9. Division/Group Communications Summary								
Function	Frequency - RX	Frequency - TX	Tone	System	Channel	System	Channel	
Command	171.5500	172.3750	146.2	King	4			
Tactical Div/Group	154.2950	154.2950		King	12			
Logistics								
Air to Ground	168.6750	168.6750		King	14			
Prepared by (Resource Unit Leader) Jo Ann Smith			Approved by (Planning Section Chief) Phil Weston		Date Prepared 04/13/12		Time Prepared 1119	

Division Assignment List			1. Branch		2. Division/Group IA		
3. Incident Name COUNTY LINE			4. Operational Period 04/14/12 Saturday Day Shift 0700 - 1800				
5. Operations Personnel							
Operations Chief		MARTY BENTLEY, PETE KUBIAK			Division/Group Supervisor		MIKE BOT
Operations Chief(t)		G.BROOKS, J.SCHARDT			Air Attack Supervisor		GREG HAXBY
Operations Chief Night					Safety Officer		GLEN STAPLETON
6. Resources Assigned this Period							
Strike Team/Task Force/ Resource Designator		Leader		Num of Pers.	Trans. Y/N	Drop Off PT./Time	Pick Up PT./Time
O-27	ICT4	SUSAN KETT		1	N		
C-2	ASHVILLE IHC	MIKE HONEYCUTT		20	N		
O-17	TFLD	TIM WHARTON		1	N		
E-23	ENG6/ NM-CIF	DWAYNE ERIECHO		2	N		
E-55	ENG6 /TRAILRIDGE	4/23	McDAVID,HATFIELD(T)	3	N		
	ENG6 /FL-FNF #461	4/20	HOWARD HARVEY	2	N		
	ENG6/ FL-FNF #462	4/20	LONNIE STALCUP	2	N		
O-76	HEQB	4/24	ASHLEY BAXLEY	1	N		
E-9	TPL2/FL-FSS	4/20	ROBERT BURNS	1	N		
E-8	TPL2/FL-FSS	4/20	JEREMY PARK	1	N		
E-126	TPL2/OSC03		REGGIE NELSON	1	N		
E-127	TPL2/OSC02		JASON LAGO	1	N		
7. Control Operations Be prepared to disengage from assigned Divisions and move to Initial Attack. Snag Safety/Look-up-Look Around.							
8. Special Instructions Utilize backers when backing up. Soft spots in the sand surface roads can cause your vehicle to shift abruptly. Stay alert to changing conditions. Fuels are dry and fire danger is predicted to be extreme. Don't be suprised by the fire behavior and plan your activities based on current and predicted weather.							
9. Division/Group Communications Summary							
Function	Frequency - RX	Frequency - TX	Tone	System	Channel	System	Channel
Command	171.5500	172.3750	146.2	King	4		
Tactical Div/Group	154.2950	154.2950		King	12		
Logistics							
Air to Ground	168.6750	168.6750		King	14		
Prepared by (Resource Unit Leader) Jo Ann Smith			Approved by (Planning Section Chief) Phil Weston		Date Prepared 04/13/12		Time Prepared 1125

Division Assignment List			1. Branch		2. Division/Group IA (PAGE 2)		
3. Incident Name COUNTY LINE			4. Operational Period 04/14/12 Saturday Day Shift 0700 - 1800				
5. Operations Personnel							
Operations Chief		MARTY BENTLEY, PETE KUBIAK			Division/Group Supervisor		MIKE BOT
Operations Chief (T)		GREG BROOKS; JEFFERY SCHARDT			Air Attack Supervisor		GREG HAXBY
Branch Director					Safety Officer		GLEN STAPLETON
6. Resources Assigned this Period							
Strike Team/Task Force/ Resource Designator		Leader		Num of Pers.	Trans. Y/N	Drop Off PT./Time	Pick Up PT./Time
O-136 TFLD		TY HAYMAN		1	N		
TFLD (t)		JEFFREY GREENE		1	N		
E-91 TPL2/GFC3230		STEVE CAMPBELL		1	N		
E-92 TPL2/ GFC1182		BENJI ANDERSON		1	N		
E-93 TPL2/ GFC3228		DANIEL BOULINEAU		1	N		
O-137 TFLD		C. BUCHANAN		1	N		
0-143 TFLD (t)		RUSSELL FOWLER					
E-94 TPL2/ GFC3085		DEREK HARPER		1	N		
E-95 TPL2/ GFC1417		ERIC SMITH		1	N		
E-97 TPL2/ GFC1070		FRANKLIN ALLEN		1	N		
O-138 TFLD		TROY HELMS		1	N		
E-79 TPL2/ GFC1518		BARRY BENNETT		2	N		
E-86 TPL2/ GFC3229		WILLIAM REGISTER		2	N		
E-96 TPL3/ GFC3124		IRA MONROE		1	N		
7. Control Operations Strike Team Hayman staged at Birds Peak, Drop Site South of DP 40. Strike Team Buchanan staged at Eddy Tower H-3. Strike Team Helms Staged at Council. Snag Safety/Look up Look Around.							
8. Special Instructions Equipment staging is located behind the Osceola Ranger District Office. Personnel in staging will be at the ICP. Resources need to be ready for an assignment.Snag Safety/Look-up-Look Around.							
9. Division/Group Communications Summary							
Function	Frequency - RX	Frequency - TX	Tone	System	Channel	System	Channel
Command	171.5500	171.5500	000.0	King	1		
Tactical Div/Group	154.2650	154.2650		King	10		
Logistics							
Air to Ground	168.6750	168.6750		King	14		
Prepared by (Resource Unit Leader) Melonie Sellers (t)			Approved by (Planning Section Chief) Phil Weston		Date Prepared 04/13/12		Time Prepared 1150

Division Assignment List		1. Branch		2. Division/Group Continaency			
3. Incident Name COUNTY LINE		4. Operational Period 04/14/12 Saturday Day Shift 0700 - 1800					
5. Operations Personnel							
Operations Chief	MARTY BENTLEY, PETE KUBIAK		Division/Group Supervisor		DALE DONAHUE, D.GRETTENBERG(t)		
Operations Chief (t)'s	GREG BROOKS,; JEFFERY SCHARDT		Air Attack Supervisor		GREG HAXBY		
Branch Director			Safety Officer		KEN GORDON		
6. Resources Assigned this Period							
Strike Team/Task Force/ Resource Designator	Leader		Num of Pers.	Trans. Y/N	Drop Off PT./Time	Pick Up PT./Time	
E-39	ENG7/ CNF #722		GREG SALANSKY	2	N		
E-24	EXCAVATOR w/mulching		ROT CONSTRUCTION	1	N		
E-102	BAT WING MOWER		ROT CONSTRUCTION	1	N		
E-119	MOTOR GRADER		ROT CONSTRUCTION	1	N		
	EXCAVATOR		ROT CONSTRUCTION	1	N		
7. Control Operations							
Brush out and grade roads for all Divisions.Snag Safety/Look-up Look Around.							
8. Special Instructions							
Utilize backers when backing up. Soft spots in the sand surface roads can cause your vehicle to shift abruptly. Stay alert to changing conditions. Fuels are dry and fire danger is predicted to be extreme. Don't be surprised by the fire behavior and plan your activities based on current and predicted weather.							
9. Division/Group Communications Summary							
Function	Frequency - RX	Frequency - TX	Tone	System	Channel	System	Channel
Command	171.5500	172.3750	146.2	King	4		
Tactical Div/Group	154.2650	154.2650		King	10		
Logistics							
Air to Ground	168.6750	168.6750		King	14		
Prepared by (Resource Unit Leader) Jo Ann Smith			Approved by (Planning Section Chief) Phil Weston		Date Prepared 04/13/12	Time Prepared 1133	

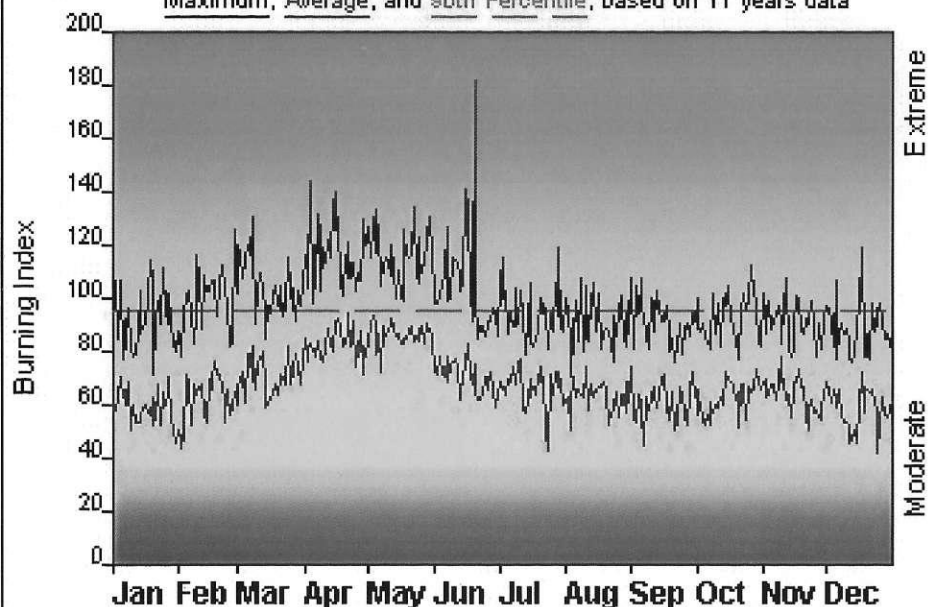
Division Assignment List			1. Branch		2. Division/Group NIGHT		
3. Incident Name COUNTY LINE			4. Operational Period 04/14/12 Saturday Day Shift 0700 - 1800				
5. Operations Personnel							
Operations Chief		FENN WIMBERLY			Division/Group Supervisor		MARK SULLIVAN/DAN MCDONALD/MITT KETRON (t)
Operations Chief					Air Attack Supervisor		
Branch Director					Safety Officer		TOM KRUEGER
6. Resources Assigned this Period							
Strike Team/Task Force/ Resource Designator		Leader		Num of Pers.	Trans. Y/N	Drop Off PT./Time	Pick Up PT./Time
C-1; CHEROKEE IHC 4/16		DENNIS TRENTAM		19	N		
TFLD		ALTON ANDERSON					
TFLD (t)		BRANDON CORBITT					
E-1	ENG6/CHEROKEE #641 4/19	DAVID IVES		2	N		
E-2	ENG6/ CHEROKEE #661 4/19	NEAL STUDDARD		3	N		
E-20	ENG6/KY-LBF #162 4/22	DANIEL CASTO		3	N		
HEQB		CURT WARD					
HEQB (t)		JAMES WATSON		1	N		
E-8	TPL2/ FL-FSS	MICHAEL CHRISTIE		1	N		
E-9	TPL2/ FL-FSS	ANDREW ROSS 4/24		1	N		
E-10	TPL2/ FL-FSS	CHARLES CHANAKI 4/24		1	N		
E-11	TPL2/ FL-FSS	JOHNATHAN ROBERTS		1	N		
E-12	TPL2/ FL-FSS	RANDY SHIVER 4/24		1	N		
E-13	TPL2/ FL-FSS	BRANDON BENNETT		1	N		
7. Control Operations							
Base all actions on briefing and progress made by day shift. Patrol and monitor all control lines.Snag Safety/Look-up-Look Around.							
8. Special Instructions							
Utilize backers when backing up. Soft spots in the sand surface roads can cause your vehicle to shift abruptly. Stay alert to changing conditions. Fuels are dry and fire danger is predicted to be extreme. Don't be surprised by the fire behavior and plan your activities based on current and predicted weather. Night operations pose more limitations to visibility and potential fatigue. Monitor all personnel and mitigate as necessary.							
9. Division/Group Communications Summary							
Function	Frequency - RX	Frequency - TX	Tone	System	Channel	System	Channel
Command	171.5500	172.3750	146.2	King	4		
Tactical Div/Group	154.2650	154.2650		King	10		
Logistics							
Air to Ground	168.6750	168.6750		King	14		
Prepared by (Resource Unit Leader) Jo Ann Smith			Approved by (Planning Section Chief) Phil Weston		Date Prepared 04/13/12		Time Prepared 1137

10. TASK/ MISSION/ ASSIGNMENT (Type/ function includes: Air Tactical, Retardant, Recon, Personnel Transport, Bucket Operations, SAR, etc.)				
TYPE/FUNCTION	NAME OF PERSONNEL OR CARGO (If applicable) or instructions for tactical aircraft	MISSION START	FLY FROM	FLY TO
Air Attack	Maintain coverage as directed by Operations	As Requested	LCQ	Fire

10. TASK/ MISSION/ ASSIGNMENT (Type/ function includes: Air Tactical, Retardant, Recon, Personnel Transport, Bucket Operations, SAR, etc.)				
TYPE/FUNCTION	NAME OF PERSONNEL OR CARGO (If applicable) or instructions for tactical aircraft	MISSION START	FLY FROM	FLY TO
Bucket Support	Bucket support as requested by Operations	As Requested	LCQ	Fire
PAX/Cargo	Helicopter best suited to request.	0830	LCQ	Fire
MEDIVAC	Request through ICP Communications & MEDL on Command Repeater. Give location: lat/long if known. Refer to Medical plan/IAP	As requested	LCQ	As directed
Recon/ Mapping	Request thru operations as needed.	1100 hrs. 1700hrs.	LCQ	Fire
Operations	Ops. Recon	0830 hrs. 1300 hrs.	LCQ	Fire
Initial Attack Assistance	Support I.A. as requested by Operations	As requested	LCQ	As directed
NOTES:	DESIGNATED MEDEVAC - N203HA (secondary) will be utilized if Trauma One is not available			
	Okee Type 3 N1065C may be available at Pogo H.B.			
	DESIGNATED I.A. – N14HX			
	Beginning Sat. 4/14/12 T-48 and B-28 will be on shift 0900 to 1900.			
HELIBASE SUPPORT EQUIPMENT	Crash/Rescue Kits – Helibase trailer – Forest Resource			

FIRE DANGER -- Osceola N. F.

Maximum, Average, and 90th Percentile, based on 11 years data

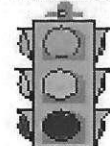


Fire Danger Area:

- ◆ Osceola National Forest
- ◆ Jacksonville, FL
- ◆ Olustee, Eddy Tower
- * Meets NWCG Wx Station Standards



Fire Danger Interpretation:



- EXTREME -- Use extreme caution
- (Caution) -- Watch for change
- Moderate -- Lower Potential, but always be aware

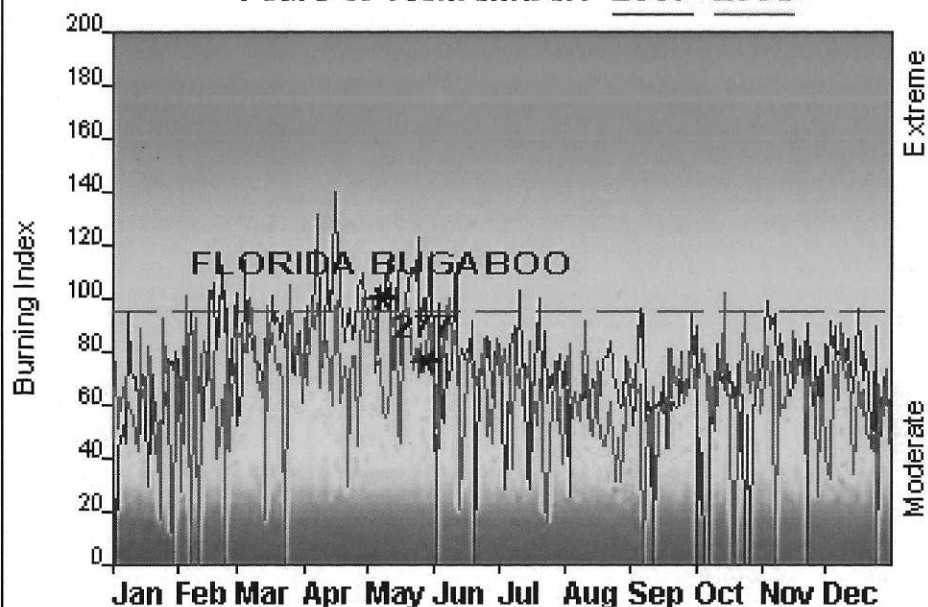
Maximum -- Highest Burning Index by day for 1998 - 2008

Average -- shows peak fire season over 11 years (4010 observations)

90th Percentile -- Only 10% of the 4010 days from 1998 - 2008 had an Burning Index above 95

Local Thresholds - Watch out: Combinations of any of these factors can greatly increase fire behavior:
 20' Wind Speed over 15 mph, RH less than 30%,
 Temperature over 90, Keetch-Byram Drought Index over 450

Years to Remember: 2007 2006



Fuel Model: J - Intermediate Slash

Remember what Fire Danger tells you:

- ✓ Burning Index gives day-to-day fluctuations calculated from 2 pm temperature, humidity, wind, daily temperature & rh ranges, and precip duration.
- ✓ Wind is part of BI calculation.
- ✓ Watch local conditions and variations across the landscape -- Fuel, Weather, Topography.
- ✓ Listen to weather forecasts -- especially WIND.

Past Experience:

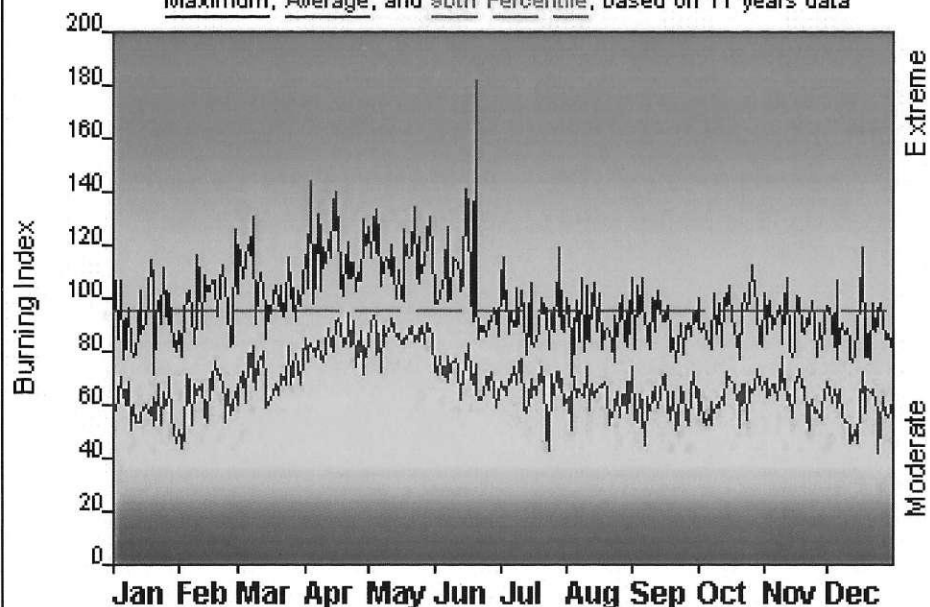
Significantly high fuel loading Forest-wide. Green fuels in Florida burn more intensely due to chemical content. Swamp fuels produce significant short- and long-range spotting. Lightning strike more frequent in Florida than in other southern state. Terrain: mucky soils require 4-wheel drive. Above average wind speeds, even slight increases, when combined with previously mentioned local factors can rapidly contribute to fire growth. Potential extreme fire behavior or large fire growth likely with any of the following conditions: BI above 70, Dispersion index above 55, Mixing height above 6500'.

Responsible Agency: US Forest Service - NFs in Florida
 FF+4.0.2 07/01/2009-12:25 (C:\Documents and Settings\wbums\Desktop\Osceola09)

Design by NWCG Fire Danger Working Team

FIRE DANGER -- Osceola N. F.

Maximum, Average, and 90th Percentile, based on 11 years data

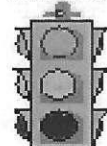


Fire Danger Area:

- ◆ Osceola National Forest
- ◆ Jacksonville, FL
- ◆ Olustee, Eddy Tower
- * Meets NWCG Wx Station Standards



Fire Danger Interpretation:



- EXTREME -- Use extreme caution
- (Caution) -- Watch for change
- Moderate -- Lower Potential, but always be aware

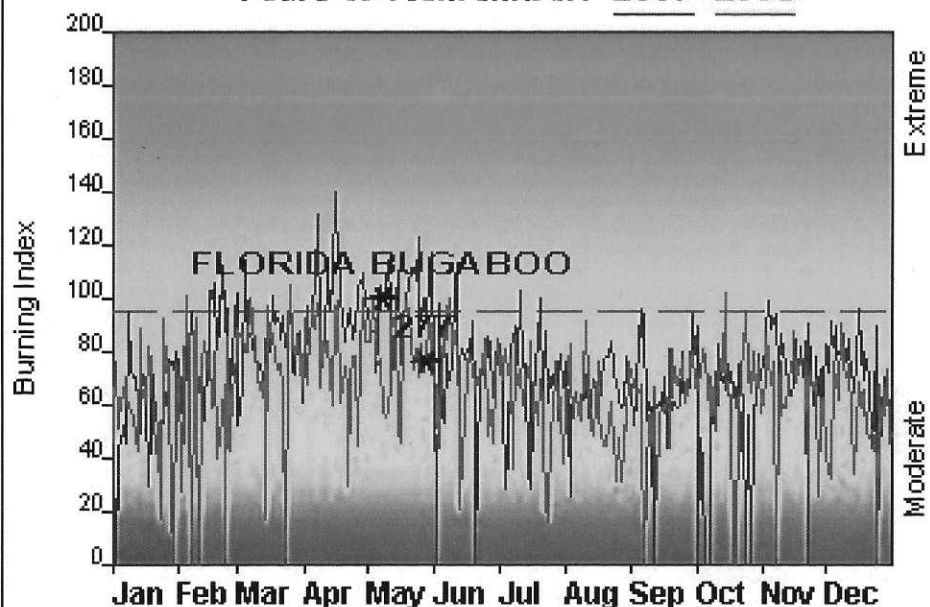
Maximum -- Highest Burning Index by day for 1998 - 2008

Average -- shows peak fire season over 11 years (4010 observations)

90th Percentile -- Only 10% of the 4010 days from 1998 - 2008 had an Burning Index above 95

Local Thresholds - Watch out: Combinations of any of these factors can greatly increase fire behavior:
 20' Wind Speed over 15 mph, RH less than 30%,
 Temperature over 90, Keetch-Byram Drought Index over 450

Years to Remember: 2007 2006



Fuel Model: J - Intermediate Slash

Remember what Fire Danger tells you:

- ✓ Burning Index gives day-to-day fluctuations calculated from 2 pm temperature, humidity, wind, daily temperature & rh ranges, and precip duration.
- ✓ Wind is part of BI calculation.
- ✓ Watch local conditions and variations across the landscape -- Fuel, Weather, Topography.
- ✓ Listen to weather forecasts -- especially WIND.

Past Experience:

Significantly high fuel loading Forest-wide. Green fuels in Florida burn more intensely due to chemical content. Swamp fuels produce significant short- and long-range spotting. Lightning strike more frequent in Florida than in other southern state. Terrain: mucky soils require 4-wheel drive. Above average wind speeds, even slight increases, when combined with previously mentioned local factors can rapidly contribute to fire growth. Potential extreme fire behavior or large fire growth likely with any of the following conditions: BI above 70, Dispersion index above 55, Mixing height above 6500'.

Responsible Agency: US Forest Service - NFs in Florida
 FF+4.0.2 07/01/2009-12:25 (C:\Documents and Settings\wbums\Desktop\Osceola09)

Design by NWCG Fire Danger Working Team

HEALTH AND SAFETY MESSAGE

Every person must have a briefing prior to going on line.

INCIDENT: County Line Wildfire

DATE: Saturday 4-14-2012

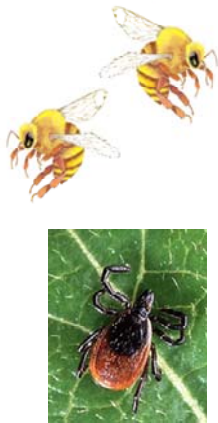
TIME: Day Shift and Night Shift

Major Hazards and Risks:

Driving and Road Conditions
Environmental Concerns

Driving:

If you meet a Semi (tractor trailer) on these narrow dirt roads, pull over for them. Remember these bigger rigs can get stuck easy and it is better for them to keep on the road and keep up their momentum. Keep up good communications on these roads.
It is not worth the risk to go over the posted speed limits, even if it is in response to 'Initial Attack'.



Water holes are drying up and many critters that can hurt you are gathering up around the existing wet areas. Caution should be taken when you find yourself near these areas. Some of them may be on the move looking for these areas. The best policy is stay clear of these animals. If you do get stung or bit, seek help immediately.



I will leave you alone if you leave me alone!

Type 2 Team Safety Officer Trainee:
Kenneth R. Gordon

/c/ **Kenneth R. Gordon**

Incident Radio Communications Plan		1. Incident Name COUNTY LINE		2. Operational Period 04/14/12 Saturday Day Shift 0700 - 1800		
3. Basic Radio Channel Utilization						
Radio Type	Channel	Function	Frequency/Tone		Assignment	Remarks
King	1	Admin	RX 171.5500	TX 171.5500	Admin	
			000.0			
King	2	Olustee	RX 171.550	TX 172.3750	Olustee	
			167.9			
King	3	R8 Fire	RX 169.9000	TX 169.9000	R8 Fire	
King	4	Eddy	RX 171.5500	TX 172.3750	Eddy	
			146.2			
king	5	DOF 62	RX 159.3300	TX 151.3475	DOF 62	
			94.8			
King	6	DOF 190	RX 151.2725	TX 151.2725	DOF 190	
King	7	DOF 191	RX 151.2875	TX 151.2875	DOF 191	
King	8	East Tower A	RX 168.4750	TX 173.8125	East Tower A	C6
King	9	Baker Fire	RX 154.4000	TX 154.4000	Baker Fire	
			156.7			
King	10	Red	RX 154.2650	TX 154.2650	Red	
King	11	White	RX 154.2800	TX 154.2800	White	
King	12	Blue	RX 154.2950	TX 154.2950	Blue	
King	13	East Tower B	RX 173.0375	TX 167.3250	East Tower B	C-12
King	14	AIR 2 GRD	RX 168.6750	TX 168.6750	AIR 2 GRD	
King	15	AIR 2 GRD TWO	RX 168.1250	TX 168.125	AIR 2 GRDTWO	
			156.7			
King	16	Air Guard	RX 168.6250	TX 168.6250	Air Guard	
			110.9			
4. Prepared by (Communications Unit) Larry Garrett 404-354-5279					5. Date Prepared 04/13/12	6. Time Prepared 1641

ICS-206 MEDICAL PLAN	1. Incident Name County Line Fire	2. Date Prepared 4-13-12	3. Time Prepared 1900	4. Operational Period 4/14/12 0600-0600				
5. Incident Medical Aid Station								
Medical Aid Stations	Location			Paramedics Yes No				
Medical Unit 727-243-4144	ICP- Public Safety School after briefing			X				
Medical Unit 727-243-4144	Work Center during both briefings			X				
Gary Clarke - Sat Phone 1-480-768-2500 then enter 881651434723	DP 30 - 12 Noon until 12 Midnight			X				
John Meredith Same as above	DP 30 - 1800 until 0700			X				
Tom Christian 727-389-2481	With Intial Attack Group			X				
Gene-Paul Matson 434-665-0444	ICP			X				
Poision Control	800-222-1222							
6. Transportation								
A. Ambulance Services								
Name	Address	Phone	Paramedics Yes No					
Columbia County EMS (911)		911	X					
Baker County EMS		911	X					
Trauma One		800-223-4878						
B. Incident Ambulances								
Name	Location			Paramedics Yes No				
None on incident								
7. Hospitals								
Name	Address	Travel Time		Phone	Helipad		Burn Center	
		Air	Grnd		Yes	No	Yes	No
Shands at Lake Shore	Lat N30 11.63 Long W82 37.0	5 min	45 min.	386-754-8001	X			X
Lake City Medical Center	Lat N30 11.38 Long W82 37.0	5 min	45 min	386-719-9393	X			X
Shands at Jacksonville	Lat N30 20.97 Long W81 39.92	30 min	1 hrs	800-233-4878	X			X
Shands Gainsville	Lat N29 38.33 Long W82 20.55	20 min	1 hrs	352-265-0200	X		X	
8. Medical Emergency Procedures								
<p>Please identify the EMT and Paramedics in your crews. All medical emergencies will be reported to the Division Supervisors. The Div. Supervisor will notify communications via radio or cell phone. Report should include location, type and number of injuries, medical and transport needs. Any on scene EMT will stabilize patient. Communications will clear radio traffic and will request all key personnel to report to communications. The MEDL will respond to communications and coordinate additional treatment, resources, and transportation needs. The term Medivac is to used for life treating evacuations only. Medical Transport will be used for non-life treating injuries or illness. Phone at medical unit (727) 243-4144</p>								
9. Prepared by (Medical Unit Leader) Tim Exline					10. Reviewed by (Safety Officer) Brad Lidell			

T r a i n i n g M e s s a g e

Operations Section Field Trainees

It is time for a follow up check on your training assignment please check in with me to let me know how you are doing.

I plan to be available before and after the 0700 and 1800 Operational Period Briefings so look me up.

James Mason Training Specialist

April 14, 2012

INCIDENT PHONE LIST

COMMAND		DISPATCH/Coordination Centers	
Mike Dueitt - ICT2	850-228-0320	Osceola NF Dispatch	386-752-2577 X4536
Steve Parrish - ICT2 (t)	850-524-1244	FICC	850-523-4419
		SACC	678-320-3000
SAFETY		OPERATIONS	
Larry Holsomback - SOF2	706-934-7581	Pete Kubiak	404-661-4819
Buddy Kelley - SOF2 (t)	850-570-8991	Greg Brooks - OSC2 (t)	828-421-5025
Kent Davenport - SOF2	334-324-9253	Pete Myer - OSC2	386-867-2394
Brad Lidell - SOF2	812-583-5543	Jeff Schardt - OSC2 (t)	706-280-5480
Don Neal - SOF2	601-209-4764	Marty Bentley - OSC2	423-584-1682
Tom Kreuger - SOF2	812-719-4953		
Glen Stapleton - SOF2	540-529-3647		
Safety Desk	386-754-4572	AIR OPERATIONS	
		Bruce Wicks - AOBD	530-906-2224
INFORMATION		Mike Rock - ASGS	606-599-2377
Fire Info Desk	386-754-4561	Greg Haxby - ATGS	208-709-2459
Bonnie Strawser - PIO2	252-216-8667	Robin Vinovich - HEB2	606-875-5748
John Bearer - PIO2	717-802-4963	West Bentley - HEB2 (t)	706-499-5076
PLANNING		FINANCE	
Marg Olson - PSC2	573-647-5844	Sandra Smith Morris - FSC2	404-909-0734
Phil Weston - PSC2	850-443-4279	Bonita Johnson - FSC2 (t)	859-556-1572
Jo Ann Smith - RESL	318-229-2609	Kim Winkler - TIME (t)	386-754-4573
Melonie Sellers - RESL (t)	601-850-8997	David Glass - COST	575-626-5749
Sarah Davis - SCKN	540-969-6383	Holly Cyprian - COST (t)	928-287-8886
SCKN/DMOB FAX	386-754-4538	Finance Desk	386-754-4573
Dan Belanger - DMOB	828-231-1529	Finance FAX	386-754-4557
	386-754-4538		
Jeff DeMatteis - SITL	601-415-9080	LOGISTICS	
Lori Pittman - GISS	615-867-4407	Bob Harrel - LSC2	404-354-5285
Jaclyn Solodovnick - GISS (t)	352-870-0415	Peter Dybing - LSC2 (t)	340-626-6365
Gary Jarvis - FBAN	202-379-6993	Cameron Crisp - ORDM	340-642-2035
Rick Davis - IMET	240-778-5277	Tom Piper - ORDM	404-354-5316
Caroline Noble - LTAN	850-591-7122	Chris Combs - RCDM	727-992-0046
Rusty Brown - CTSP	478-973-6231	Tim Exline - MEDL	727-243-4144
James Mason - TNSP	479-228-2165	Deborah Walker - FAFL	910-975-0803
		Supply Desk	218-370-1662
		Todd Waller - GSUL	501-337-6308
		Greg Blanks - SECM	912-210-3976
		Jim Watson - FS LEO	850-320-5209
		Jeff Jaaschneq - FS LEO	352-350-3699
		Chris Cason - FS LEO	386-623-5060
		Jesse Schiferd - FS LEO	605-391-4858
		Steve Berger - FWS LEO	305-304-9627
		Larry Garrett- COML	404-354-5279
		Communications Desk	386-754-4560

