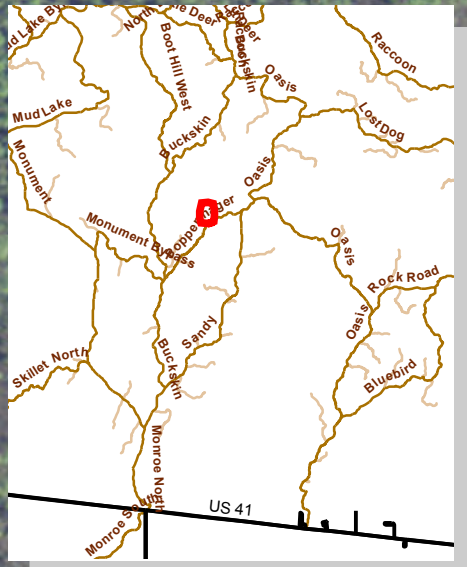


81°4'30"W

81°4'20"W

# Cluster 39



39

N25° 58.895'  
W81° 4.438'

3917

N25° 58.781'  
W81° 4.451'

N25° 58.780'  
W81° 4.444'

39D2

N25° 58.771'  
W81° 4.449'


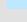
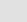



3918 N25° 58.744'  
W81° 4.606'

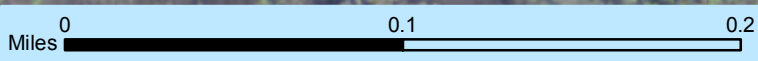
25° 58'50"N

25° 58'50"N

25° 58'40"N

25° 58'40"N

-  Previous FY15 fire
-  Private Structure
-  NPS Property
-  individual RCW trees
-  Primary ORV Trail
-  Secondary Trail (closed since 2014)
-  Former Trail (closed since 2011)
-  Landowner Only
-  Florida Hiking Trail
-  Eligible for Wilderness



Poppenhager

81°4'30"W

81°4'20"W