

# Cluster 88

N25° 58.897'  
W81° 4.070'

8804

N25° 58.885'  
W81° 4.010'

88D1

88

N25° 58.836'  
W81° 4.040'

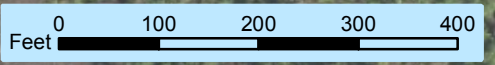
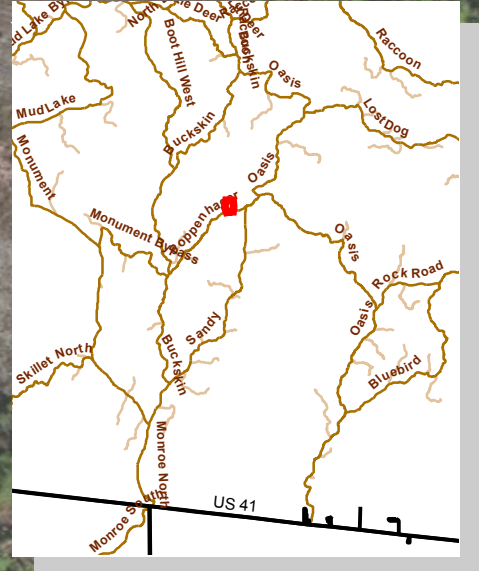
88D2

N25° 58.769'  
W81° 3.973'

8806

Poppenhager

- Previous FY15 fire
- Private Structure
- NPS Property
- individual RCW trees
- Primary ORV Trail
- Secondary Trail (closed since 2014)
- Former Trail (closed since 2011)
- Landowner Only
- Florida Hiking Trail
- Eligible for Wilderness



25° 58' 50" N

25° 58' 50" N

25° 58' 40" N

25° 58' 40" N

81° 4' W

81° 4' W