

81°5'10"W

81°5'W

81°4'50"W

# Cluster 91

N25° 58.279'  
W81° 4.955' 9102

N25° 58.228'  
W81° 4.953' 9101

▲Rhoads

Lost  
Horn  
Ranch  
Airport

91

N25° 57.921'  
W81° 4.969' 9104

N25° 57.892'  
W81° 5.007' 9106

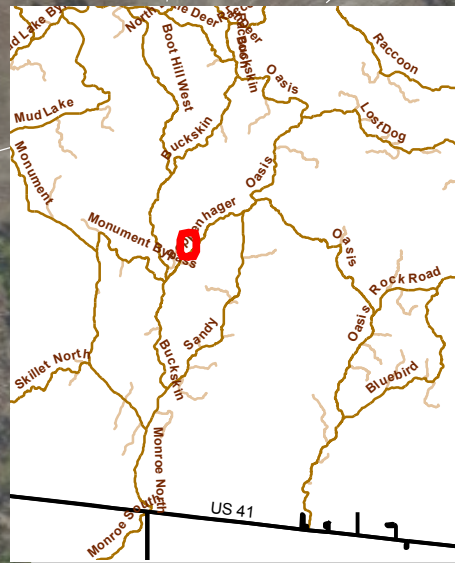
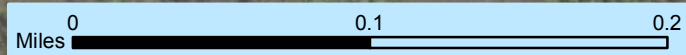
9107

N25° 57.878'  
W81° 5.007'

N25° 57.826'  
W81° 4.972' 9110

N25° 57.778'  
W81° 4.967' 9105

N25° 57.779'  
W81° 4.999' 9111



- Previous FY15 fire
- Private Structure
- NPS Property
- individual RCW trees
- Primary ORV Trail
- Secondary Trail (closed since 2014)
- Former Trail (closed since 2011)
- Landowner Only
- Florida Hiking Trail
- Eligible for Wilderness

81°5'10"W

81°5'W

81°4'50"W

25°58'1.0"N

25°58'N

25°57'50"N

25°58'1.0"N

25°58'N

25°57'50"N