



Southwest Florida & Caribbean Fire  
Big Cypress National Preserve  
Florida Panther National Wildlife Refuge



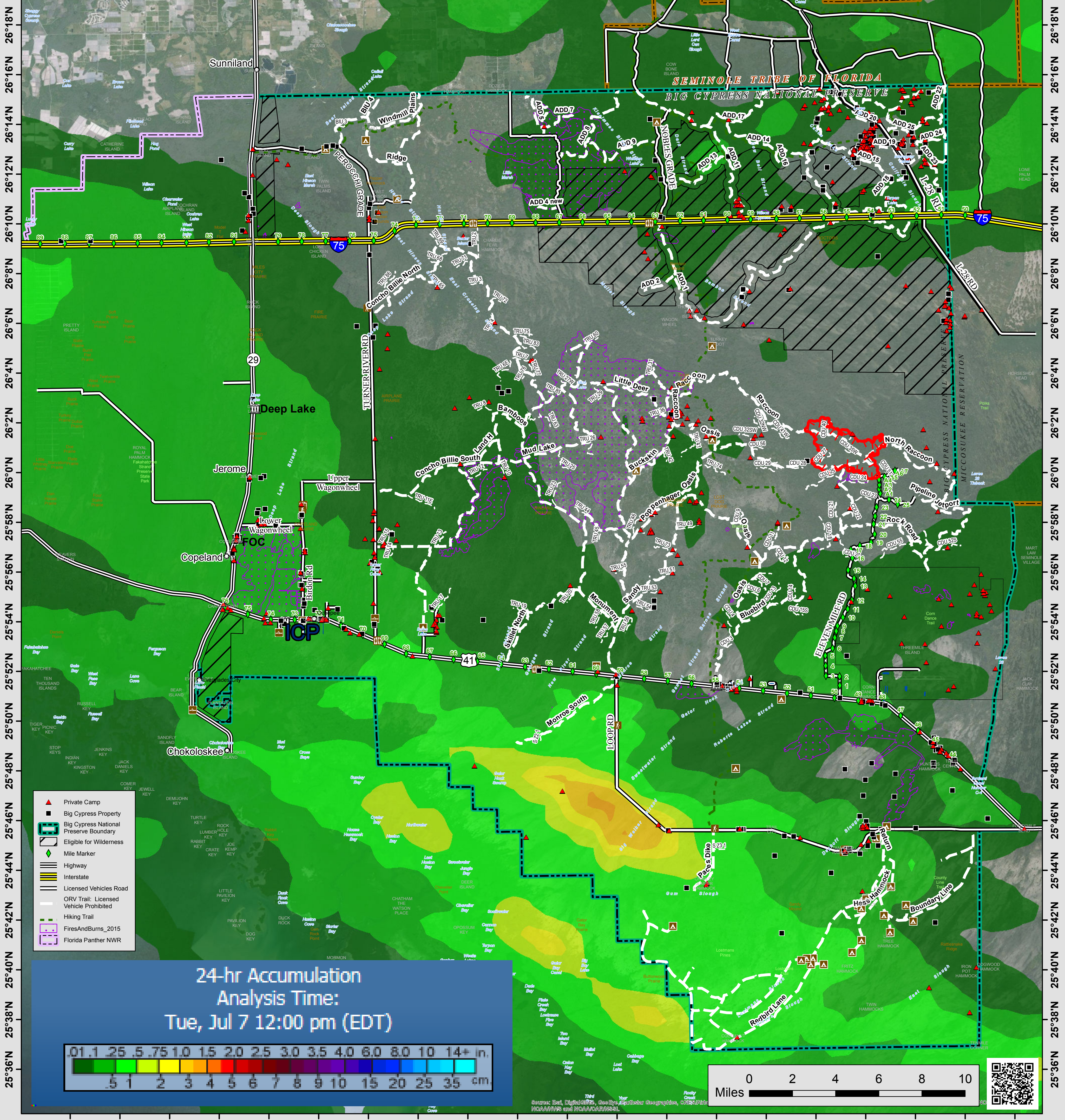
# PRECIP MAP

24-hr period, ending 1600 hrs on July 8

Department of the Interior  
National Park Service  
U.S. Fish & Wildlife Service

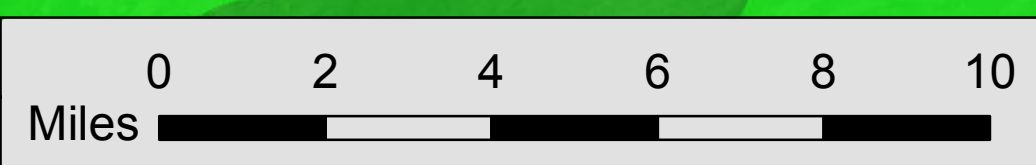
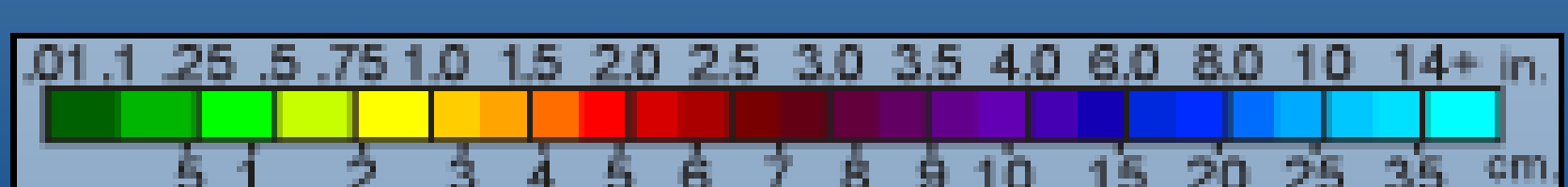


81°28'W 81°26'W 81°24'W 81°22'W 81°20'W 81°18'W 81°16'W 81°14'W 81°12'W 81°10'W 81°8'W 81°6'W 81°4'W 81°2'W 81°0'W 80°58'W 80°56'W 80°54'W 80°52'W 80°50'W



- ▲ Private Camp
- Big Cypress Property
- ▭ Big Cypress National Preserve Boundary
- ▭ Eligible for Wilderness
- Mile Marker
- Highway
- Interstate
- Licensed Vehicles Road
- ORV Trail: Licensed Vehicle Prohibited
- Hiking Trail
- FiresAndBurns\_2015
- Florida Panther NWR

24-hr Accumulation  
Analysis Time:  
Tue, Jul 7 12:00 pm (EDT)



81°28'W 81°26'W 81°24'W 81°22'W 81°20'W 81°18'W 81°16'W 81°14'W 81°12'W 81°10'W 81°8'W 81°6'W 81°4'W 81°2'W 81°0'W 80°58'W 80°56'W 80°54'W 80°52'W 80°50'W