

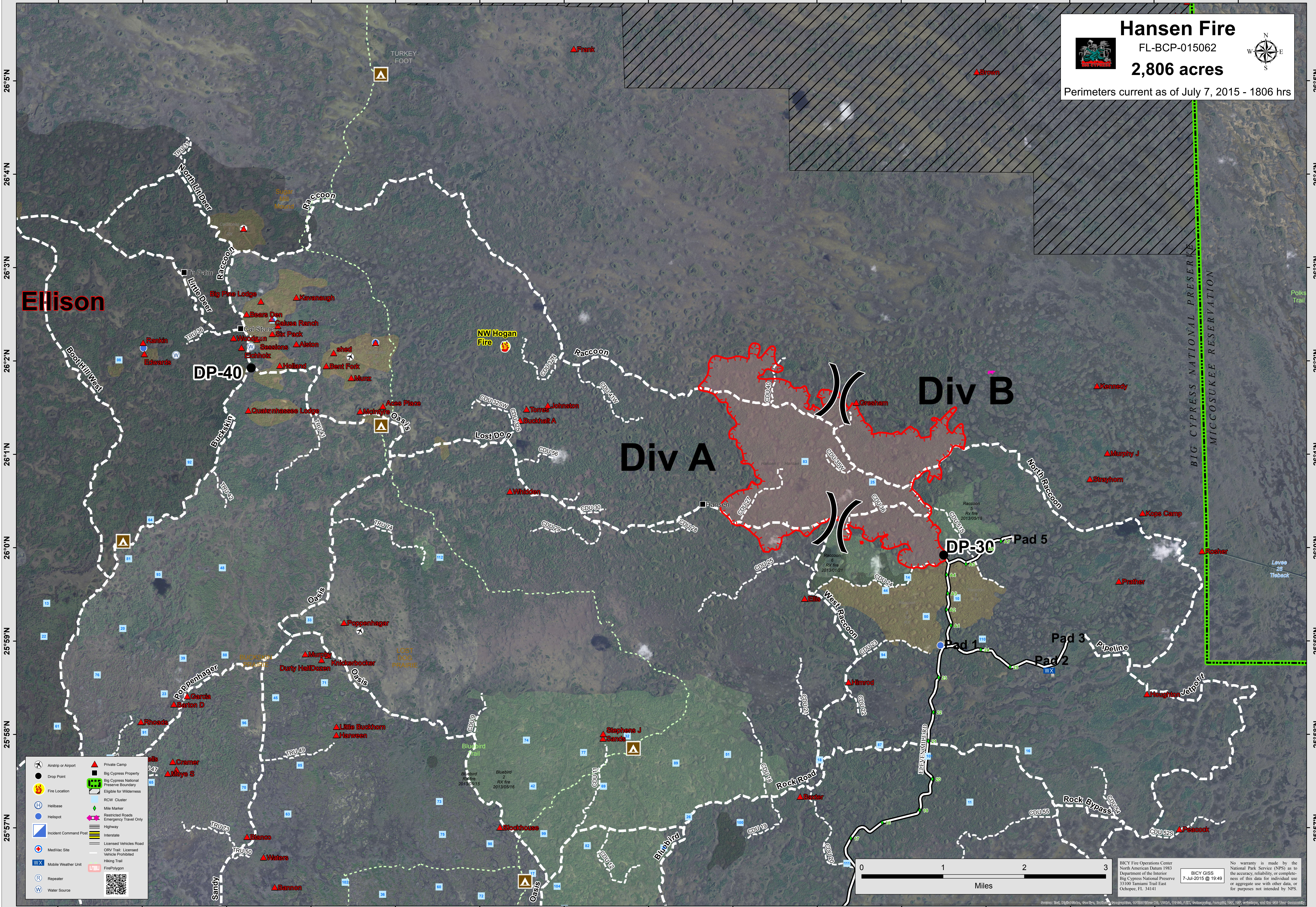


# BRIEFING MAP

Southwest Florida & Caribbean -- Fire & Aviation



81°6'W 81°5'W 81°4'W 81°3'W 81°2'W 81°1'W 81°0'W 80°59'W 80°58'W 80°57'W 80°56'W 80°55'W 80°54'W 80°53'W 80°52'W



## Hansen Fire

FL-BCP-015062

### 2,806 acres

Perimeters current as of July 7, 2015 - 1806 hrs

Ellison

Div A

Div B

DP-40

DP-30

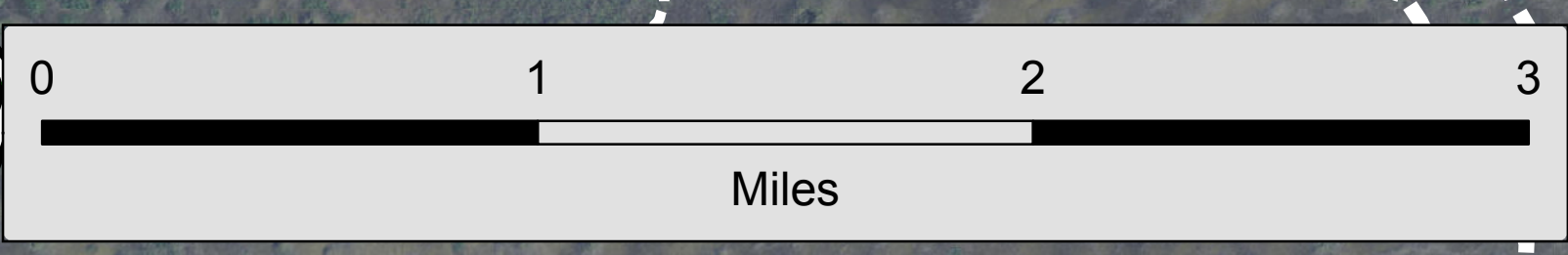
Pad 5

Pad 1

Pad 2

Pad 3

- Airstrip or Airport
- Drop Point
- Fire Location
- Heli-base
- Heli-spot
- Incident Command Post
- Med/Vac Site
- Mobile Weather Unit
- Repeater
- Water Source
- Private Camp
- Big Cypress Property
- Big Cypress National Preserve Boundary
- Eligible for Wilderness
- RCW Cluster
- Mile Marker
- Restricted Roads Emergency Travel Only
- Highway
- Interstate
- Licensed Vehicles Road
- ORV Trail: Licensed Vehicle Prohibited
- Hiking Trail
- Fire Polygon



BICY Fire Operations Center  
North American Datum 1983  
Department of the Interior  
Big Cypress National Preserve  
33100 Tamiami Trail East  
Ochopee, FL 34141

BICY GISS  
7-Jul-2015 @ 19:49

No warranty is made by the National Park Service (NPS) as to the accuracy, reliability, or completeness of this data for individual use or aggregate use with other data, or for purposes not intended by NPS.

81°6'W 81°5'W 81°4'W 81°3'W 81°2'W 81°1'W 81°0'W 80°59'W 80°58'W 80°57'W 80°56'W 80°55'W 80°54'W 80°53'W 80°52'W