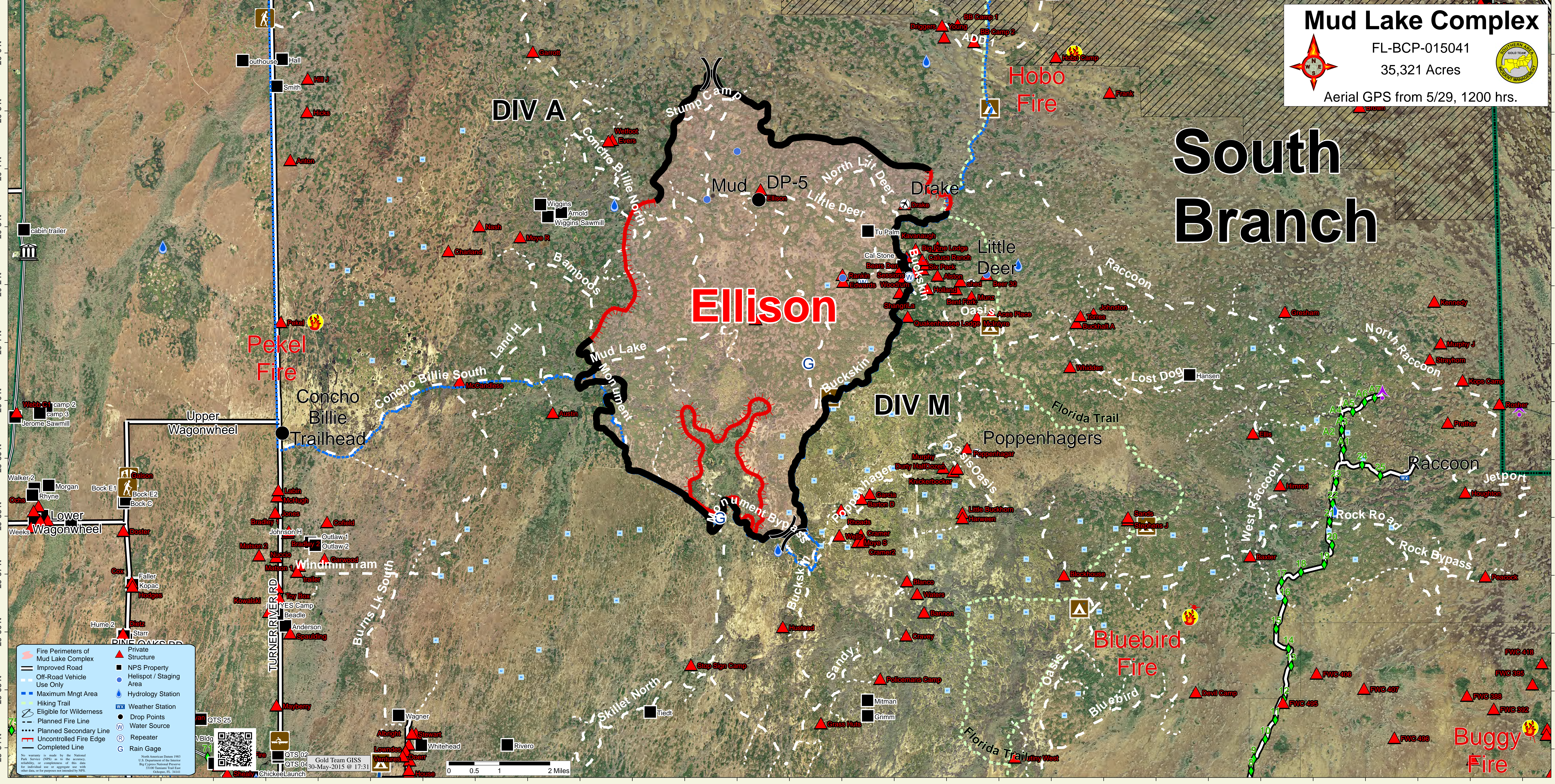


81°20'W 81°19'W 81°18'W 81°17'W 81°16'W 81°15'W 81°14'W 81°13'W 81°12'W 81°11'W 81°10'W 81°9'W 81°8'W 81°7'W 81°6'W 81°5'W 81°4'W 81°3'W 81°2'W 81°1'W 81°0'W 80°59'W 80°58'W 80°57'W 80°56'W 80°55'W 80°54'W 80°53'W 80°52'W



Mud Lake Complex

FL-BCP-015041
 35,321 Acres
 Aerial GPS from 5/29, 1200 hrs.

- | | | | |
|--|-------------------------------------|--|-------------------------|
| | Fire Perimeters of Mud Lake Complex | | Private Structure |
| | Improved Road | | NPS Property |
| | Off-Road Vehicle Use Only | | Helispot / Staging Area |
| | Maximum Mngt Area | | Hydrology Station |
| | Hiking Trail | | Weather Station |
| | Eligible for Wilderness | | Drop Points |
| | Planned Fire Line | | Water Source |
| | Planned Secondary Line | | Repeater |
| | Uncontrolled Fire Edge | | Rain Gage |
| | Completed Line | | |

No warranty is made by the National Park Service (NPS) as to the accuracy, reliability, or completeness of this data for individual use or aggregate use with other data, or for purposes not intended by NPS.

North American Datum 1983
 U.S. Department of the Interior
 Big Cypress National Preserve
 3100 Turnpike Trail East
 Ocala, FL 34414

Gold Team GISS
 30-May-2015 @ 17:31

0 0.5 1 2 Miles

81°20'W 81°19'W 81°18'W 81°17'W 81°16'W 81°15'W 81°14'W 81°13'W 81°12'W 81°11'W 81°10'W 81°9'W 81°8'W 81°7'W 81°6'W 81°5'W 81°4'W 81°3'W 81°2'W 81°1'W 81°0'W 80°59'W 80°58'W 80°57'W 80°56'W 80°55'W 80°54'W 80°53'W 80°52'W