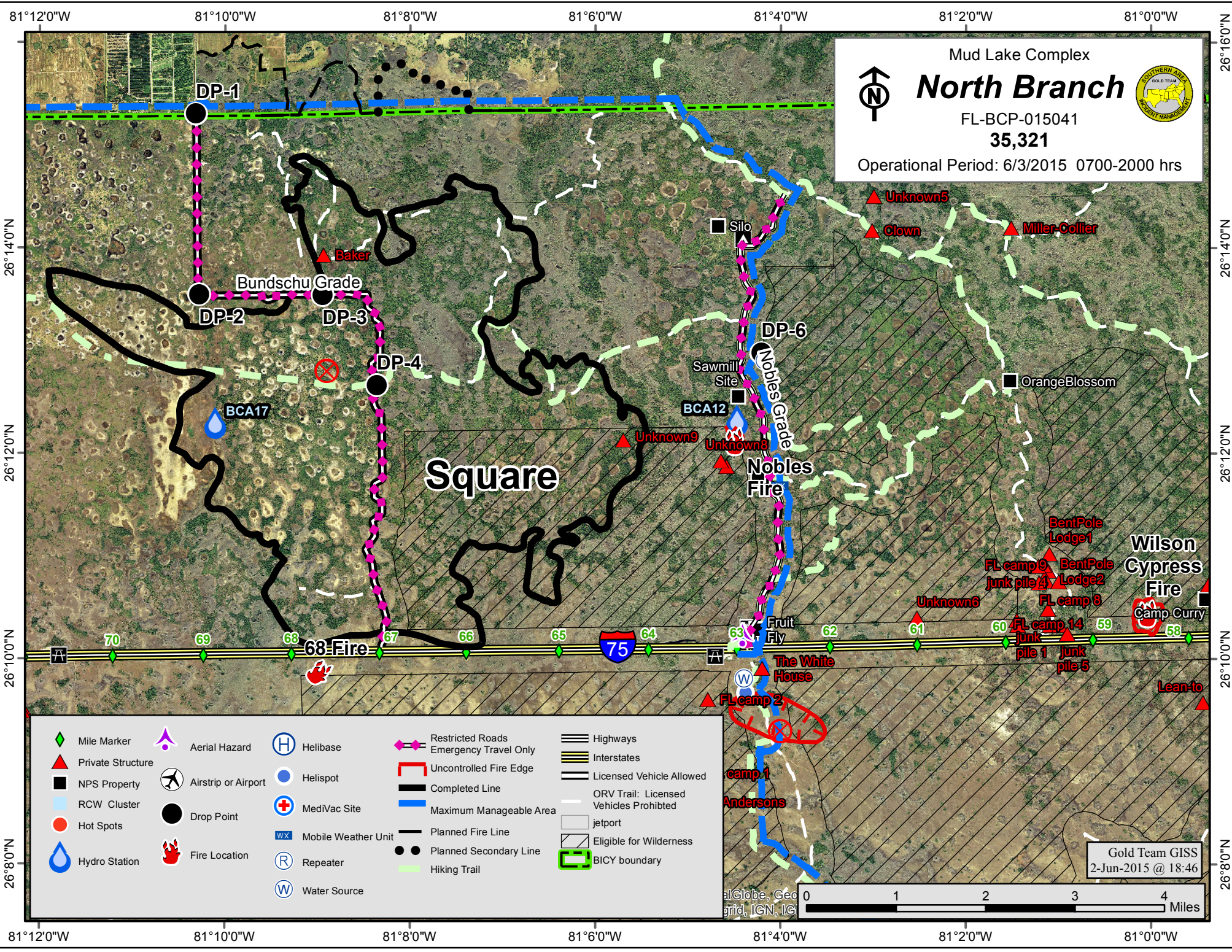


Mud Lake Complex  
**North Branch**  
 FL-BCP-015041  
**35,321**  
 Operational Period: 6/3/2015 0700-2000 hrs



- |                   |                     |                        |   |  |
|-------------------|---------------------|------------------------|---|--|
| Mile Marker       | Aerial Hazard       | Helibase               | Restricted Roads<br>Emergency Travel Only | Highways                                   |
| Private Structure | Airstrip or Airport | Helispot               | Uncontrolled Fire Edge                    | Interstates                                |
| NPS Property      | Drop Point          | MediVac Site           | Completed Line                            | Licensed Vehicle Allowed                   |
| RCW Cluster       | Fire Location       | Mobile Weather Unit    | Maximum Manageable Area                   | ORV Trail: Licensed<br>Vehicles Prohibited |
| Hot Spots         | Water Source        | Repeater               | Planned Fire Line                         | jetport                                    |
| Hydro Station     |                     | Planned Secondary Line | Hiking Trail                              | Eligible for Wilderness                    |
|                   |                     | BICY boundary          |   |  |

Gold Team GISS  
 2-Jun-2015 @ 18:46

