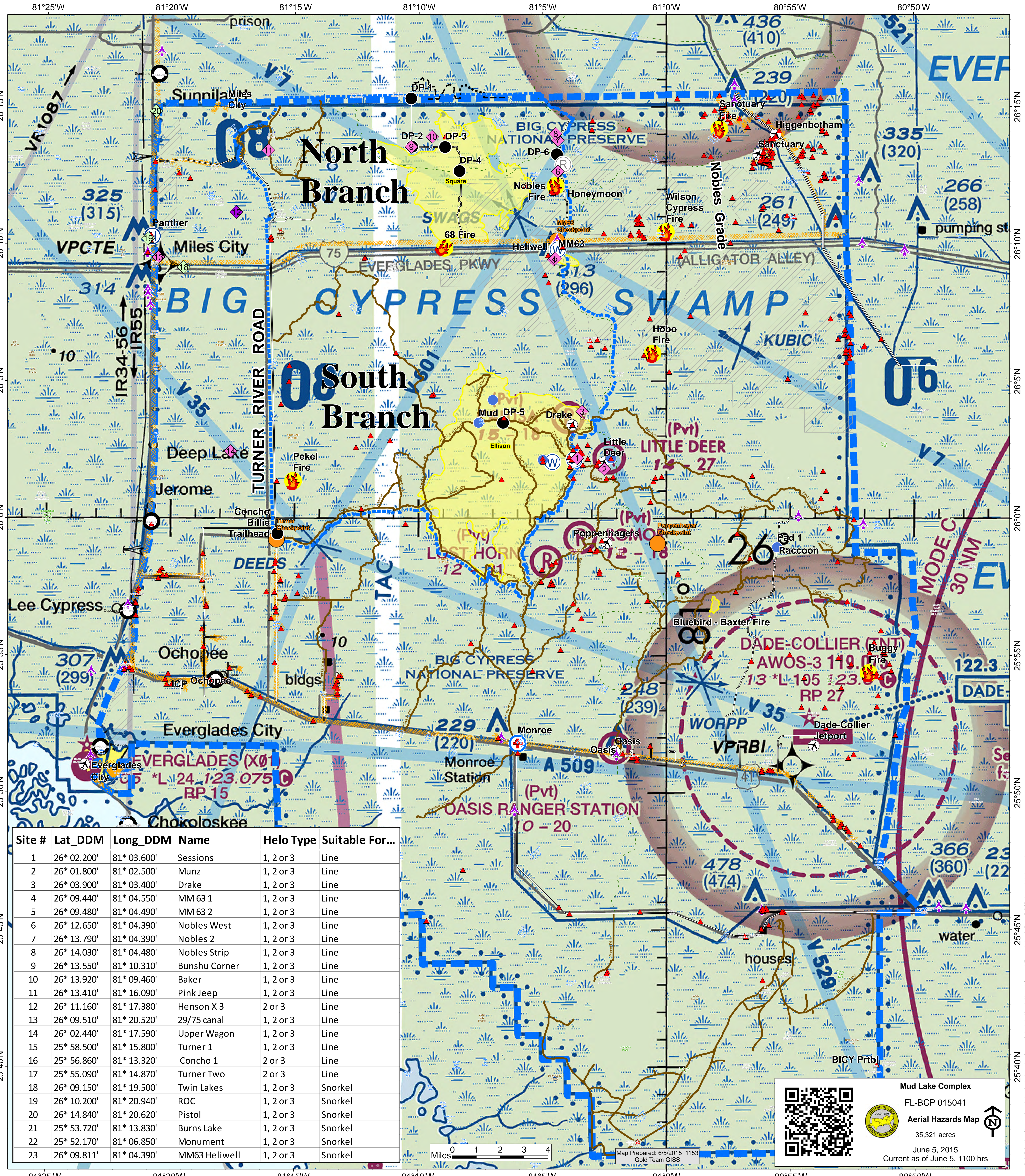


Dipsite Suitability

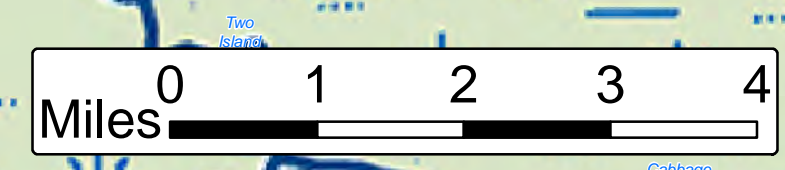
- ◆ up to Type 2, longline required (100')
- ◇ up to Type 1, snorkel compatible
- ◇ up to Type 1, longline required (100')

- ▲ Private Camp
- Helispot
- Aviation Checkpoint
- Improved Road
- ▨ Eligible For Wilderness
- ◆ Aerial Hazard
- Drop Point
- Maximum Manageable Area
- Primary ORV Trail
- ▨ Mud Lake Complex
- 🔥 Fire Location
- Ⓜ Repeater
- Planned Fire Line
- Powerlines
- 🛩 BICY boundary
- ✈ Airstrip or Airport
- ⊕ MediVac Site
- ⋯ Planned Secondary Line
- Hiking Trail
- Ⓜ Helibase
- Ⓜ Water Source



Site #	Lat_DDM	Long_DDM	Name	Helo Type	Suitable For...
1	26° 02.200'	81° 03.600'	Sessions	1, 2 or 3	Line
2	26° 01.800'	81° 02.500'	Munz	1, 2 or 3	Line
3	26° 03.900'	81° 03.400'	Drake	1, 2 or 3	Line
4	26° 09.440'	81° 04.550'	MM 63 1	1, 2 or 3	Line
5	26° 09.480'	81° 04.490'	MM 63 2	1, 2 or 3	Line
6	26° 12.650'	81° 04.390'	Nobles West	1, 2 or 3	Line
7	26° 13.790'	81° 04.390'	Nobles 2	1, 2 or 3	Line
8	26° 14.030'	81° 04.480'	Nobles Strip	1, 2 or 3	Line
9	26° 13.550'	81° 10.310'	Bunshu Corner	1, 2 or 3	Line
10	26° 13.920'	81° 09.460'	Baker	1, 2 or 3	Line
11	26° 13.410'	81° 16.090'	Pink Jeep	1, 2 or 3	Line
12	26° 11.160'	81° 17.380'	Henson X 3	2 or 3	Line
13	26° 09.510'	81° 20.520'	29/75 canal	1, 2 or 3	Line
14	26° 02.440'	81° 17.590'	Upper Wagon	1, 2 or 3	Line
15	25° 58.500'	81° 15.800'	Turner 1	1, 2 or 3	Line
16	25° 56.860'	81° 13.320'	Concho 1	2 or 3	Line
17	25° 55.090'	81° 14.870'	Turner Two	2 or 3	Line
18	26° 09.150'	81° 19.500'	Twin Lakes	1, 2 or 3	Snorkel
19	26° 10.200'	81° 20.940'	ROC	1, 2 or 3	Snorkel
20	26° 14.840'	81° 20.620'	Pistol	1, 2 or 3	Snorkel
21	25° 53.720'	81° 13.830'	Burns Lake	1, 2 or 3	Snorkel
22	25° 52.170'	81° 06.850'	Monument	1, 2 or 3	Snorkel
23	26° 09.811'	81° 04.390'	MM63 Heliwell	1, 2 or 3	Snorkel

Mud Lake Complex
 FL-BCP 015041
Aerial Hazards Map
 35,321 acres
 June 5, 2015
 Current as of June 5, 1100 hrs



Map Prepared: 6/5/2015 1153
 Gold Team GIS