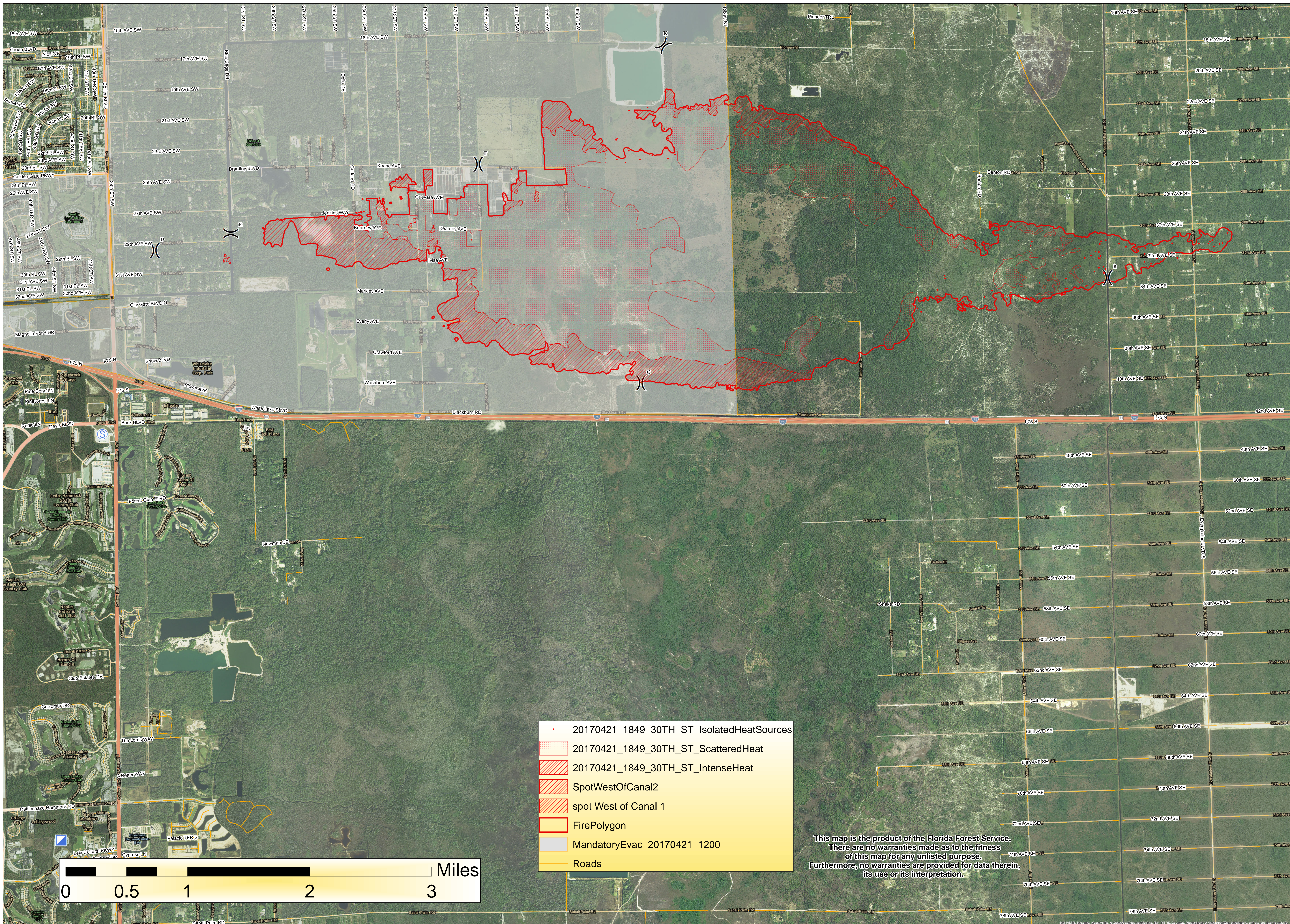
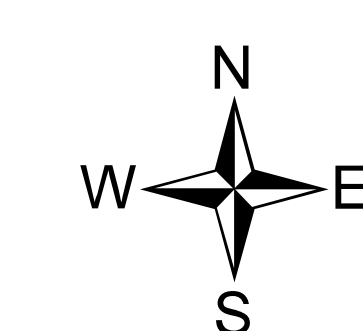
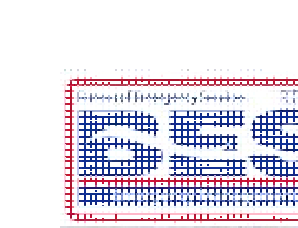
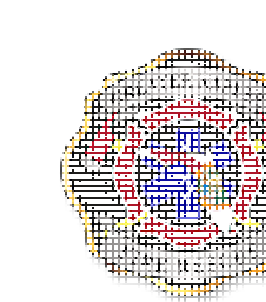




30th Avenue Wildfire Operations Map

Approx. acres 4/22/17: 5,536

Operational period 4/23/17: 0700-1900



- 20170421_1849_30TH_ST_IsolatedHeatSources
- 20170421_1849_30TH_ST_ScatteredHeat
- 20170421_1849_30TH_ST_IntenseHeat
- SpotWestOfCanal2
- spot West of Canal 1
- FirePolygon
- MandatoryEvac_20170421_1200
- Roads

This map is the product of the Florida Forest Service. There are no warranties made as to the fitness of this map for any unlisted purpose. Furthermore, no warranties are provided for data therein, its use or its interpretation.

