

# Team Titanium

## Incident Action Plan

Day Operational Period  
Thursday May 4, 2017  
0800-2000

## Cowbell Fire

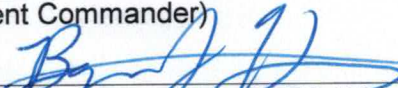
FL-BCP-017033  
PPKX1417 (1502) / FFF2000000KX140  
(21,840 acres, 75% contained)

MM 87  
FL-FPR-170001  
PRKZP317 (1502) / FFF2000000KZP30  
(516 acres, 80% contained)




QR CODE  
INCIDENT MAP

**STOP....THINK...TALK...*THEN ACT!***

INCIDENT OBJECTIVES	1. Incident Name <b>Cowbell Fire</b>	2. Date Prepared <b>5/03/217</b>	3. Time Prepared <b>1800</b>									
4. Operational Period <b>5/04/2/17 0800 - 2000</b>												
5. General Control Objectives For The Incident <u>Objectives for the Incident:</u> <ul style="list-style-type: none"> <li>• Protection of human life is top priority through the use of sound risk management decisions that are commensurate with values at risk.</li> <li>• Protect private property and infrastructure, federal facilities, critical transportation corridors, recreational and cultural resource values, T&amp;E species and their habitat (e.g. Florida Panther, Florida bonneted bat, Red-Cockaded Woodpecker), and wilderness values through coordination with READS and following MIST Tactics on initial and extended attack fires.</li> <li>• Provide opportunities to communicate and educate the public on the role of fire in the BCP and FPR ecosystems through social media and other outlets.</li> <li>• Provide training opportunities for Preserve, State, and local federal fire agency personnel to actively enhance successional planning of future firefighting personnel.</li> <li>• Sustain and enhance relationships with the people we serve.</li> </ul>												
<u>Control Objectives:</u> <ul style="list-style-type: none"> <li>• Utilize confine, contain, and point source protection strategies and tactics that commit responders only to operations where and when they can be successful.</li> <li>• In order to minimize impacts to high values including Seminole and Miccosukee tribal lands, Sanctuary community, and private land within and near to the boundaries of the Big Cypress National Preserve and Florida Panther Wildlife Refuge, keep Cowbell fire: <ul style="list-style-type: none"> <li>○ West of Add 14 and Add 17</li> <li>○ South of the Preserve boundary</li> <li>○ North of Interstate 75</li> <li>○ East of State Highway 29</li> </ul> </li> <li>• In order to minimize impacts to infrastructure and private land within and adjacent to the Florida Panther Wildlife Refuge, keep the MM87 fire: <ul style="list-style-type: none"> <li>○ West of Fakahatchee Strand.</li> <li>○ North of I-75.</li> <li>○ South and east of the refuge boundary.</li> </ul> </li> <li>• Provide initial attack for Big Cypress National Preserve and Florida Panther Refuge in coordination with local resources.</li> <li>• Minimize impact on I-75, State Road 29 and US Highway 41 in order to avoid safety threats to the public and fire fighters.</li> </ul>												
6. Weather forecast for Period See attached weather forecast.												
7. General Safety Message Look up, look down, look all around for hazards, recognize them and mitigate them.												
8. ATTACHMENTS (X IF ATTACHED) <table style="width: 100%; border: none;"> <tr> <td style="width: 33%;">[ X ] Organization List - ICS 203</td> <td style="width: 33%;">[ X ] Medical Plan - ICS 206</td> <td style="width: 33%;">[ X ] Base Camp Map</td> </tr> <tr> <td>[ X ] Division Assignment Lists - ICS 204</td> <td>[ X ] Air Ops – ICS 220</td> <td>[ X ] Vicinity Map</td> </tr> <tr> <td>[ X ] Communications Plan - ICS 205</td> <td>[ X ] Incident Map</td> <td>[ X ] Phone List</td> </tr> </table>				[ X ] Organization List - ICS 203	[ X ] Medical Plan - ICS 206	[ X ] Base Camp Map	[ X ] Division Assignment Lists - ICS 204	[ X ] Air Ops – ICS 220	[ X ] Vicinity Map	[ X ] Communications Plan - ICS 205	[ X ] Incident Map	[ X ] Phone List
[ X ] Organization List - ICS 203	[ X ] Medical Plan - ICS 206	[ X ] Base Camp Map										
[ X ] Division Assignment Lists - ICS 204	[ X ] Air Ops – ICS 220	[ X ] Vicinity Map										
[ X ] Communications Plan - ICS 205	[ X ] Incident Map	[ X ] Phone List										
9. Prepared By (Planning Section Chief) <b>Laurie Oliver PSC3</b>	10. Approved By (Incident Commander) <b>Paul Varnedoe ICT3</b> 											

## ORGANIZATION ASSIGNMENT LIST (ICS 203)

<b>1. Incident Name:</b>		<b>2. Operational Period:</b> DAY	
COWBELL		Date/Time From: 05/04/2017 0800 THU	Date/Time To: 05/04/2017 2000 THU
<b>3. Incident Commander(s) and Command Staff:</b>		RADO/EDRC	MIRA PETERS
IC/UC	PAUL VARNEDOE BYRON HART (T)	BASE CAMP MANAGER	KYLER MCCARREL
<b>7. Operations Section:</b>			
LIAISON OFFICER	DAVID M PARKER (T)	OPS SECTION CHIEF	PAUL REYNOLDS
SAFETY OFFICER	WILLARD WORLEY 5/6		
INFORMATION OFFICER	GILBERT KNIGHT II	DIVISION/GROUP	COWBELL JAMES WETTSTAED; WILLIE ADAMS (T)
<b>4. Agency/Organization Representative(s):</b>		DIVISION/GROUP	INITIAL ATTACK AARON EDWARDS (T)
<b>Agency/Organization</b>	<b>Name</b>	<b>7b. Air Operations Branch:</b>	
BIG CYPRESS NATIONAL PRESERVE	TAMMY WHITTINGTON J.D. LEE	AIR OPS	RANDY J CARTER
BICY CHIEF OF FIRE AND AVIATION	JORDON MCKNIGHT	OASIS HELIBASE MANAGER	MATT CLINTON
BICY /PANTHER AFMO	BYRON HART	<b>8. Finance/Administration Section:</b>	
PANTHER ZONE FMO	CASS PALMER	CHIEF	MEGAN MACHT
COLLIER COUNTY SHERIFF	LT. JAKE WALKER	TIME UNIT	
SEMINOLE TRIBE OF FLORIDA	GRANT STEELMAN	COST UNIT	LORI HISEK
FLORIDA HIGHWAY PATROL	LT. JOSEPH BOWERS		
GREATER NAPLES FIRE RESCUE	J. NOLAN SAPP		
FFS COLLIER CO. FOREST AREA SUP	TONY CURELLA		
FFS HENDRY CO. FOREST AREA SUP	JOE LECEA		
<b>5. Planning Section:</b>			
CHIEF	LAURIE OLIVER		
DOCUMENTATION UNIT	BOB SOBCZAK		
DEMOBILIZATION UNIT	LAURIE OLIVER		
GIS SPECIALIST	MINDY WRIGHT		
TECHNOLOGY SUPPORT SPECIALIST	SCOTT BISHAW (T)		
INCIDENT METEOROLOGIST			
RESOURCE ADVISOR	BRADY DODD		
<b>6. Logistics Section:</b>			
CHIEF	STEVE FRICK		
GROUND SUPPORT UNIT	JASON COOPER		
COMMUNICATIONS UNIT	RON REGAN		
MEDICAL UNIT	CODY GILMORE SHAWN CLARK		
SECURITY UNIT	BRETT WEHRLE DANNY MOSS		
ORDERING MANAGER	TAMMIE PERNAS		
<b>9. Prepared By:</b>	<b>Name:</b> LAURIE OLIVER	<b>Position/Title:</b> PLANNING SECTION CHIEF	<b>Signature:</b> 
ICS 203	IAP Page	<b>Date/Time:</b> 05/03/2017 0846	

## HEALTH AND SAFETY MESSAGE

---

INCIDENT: Cowbell Fire & IA DATE: May 4, 2017 TIME: 0800-2000

---

### Major Hazards and Risks:

## “It’s Not Over, Till It’s Over”

Have you ever been driving and can’t remember the last 20 miles, or walked into a room and can’t remember what you went there for? That’s not because you are having a senior moment, but because you have so much on your mind, that you are constantly changing your thoughts.

Right now you are probably thinking about one of the following;

- Re-assignment
- Demob
- Home

When you should be thinking about the day’s tasks at hand;

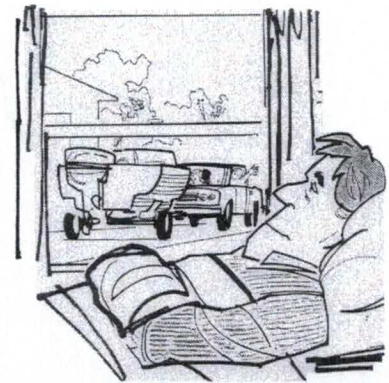
- Backhauling equipment
- Mop up
- Etc.

We have had an excellent safety record so far, don’t let your guard down now, because **“the price of an accident, is always high”**.

## REMEMBER

Fire season is just beginning for many of us. Our next assignment will be different as they all are. The basic principles of the 10 standard firefighting orders and the 18 situations that shout watch out can all be implemented by assuring that LCES is in place.

Prepared by: Mark Helm



**the price of an accident**  
...is always high!

National Safety Council

Printed in U.S.A.

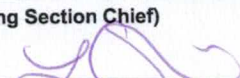
© National Safety Council

0253-A

## Division/Group Assignment List (ICS 204 WF)

<b>1. Incident Name:</b>				<b>3.</b>		
COWBELL				<b>Branch:</b>	<b>Division/Group:</b>  <b>COWBELL</b>	
<b>2. Operational Period: DAY</b>						
Date/Time From: 05/04/2017 0800 THU		Date/Time To: 05/04/2017 2000 THU				
<b>4. Operations Personnel</b>						
<b>OPERATIONS CHIEF</b>	PAUL REYNOLDS 5/5			<b>AIR OPERATIONS</b>	RANDY CARTER 5/13	
<b>DIVISION / GROUP SUPERVISOR</b>	JAMES WETTSTAED 5/4; WILLIE ADAMS 5/15 (T);					
<b>5. Resources Assigned this Period</b>						
Strike Team / Task Force / Resource Designator	LWD	Leader	Number Persons	Drop Off PT./Time	Pick Up PT./Time	
HC2I CREW - T2IA - PR MA #3 C-7	05/13	ROBERTO MARTINEZ	10	ICP/0800	ICP/2000	
TFLD O-278	05/14	JOHN TOWNSEND	1	ICP/0800	ICP/2000	
ENG6 ENGINE - T6 - 658 E-157	05/04	RUSS MARSHALL	3	ICP/0800	ICP/2000	
HEQB O-225	05/04	GARY ROSE	1			
MASTICATOR - HENDRY GRINDING E-159	05/04	CHAD MUDGE	1			
MAVERICK BUGGY2 E-66	05/27	MATEO / ANGELO	2	ICP/0800	ICP/2000	
PANTHER FIRE BUGGY (SLIMER) E-80	05/31	MANLEY/PHIPPEN	1	ICP/0800	ICP/2000	
EMPF O-250	05/05	CODY GILMORE	1	ICP/0800	ICP/2000	
<b>6. Control Operations/Work Assignments:</b>						
<p>Task:</p> <ul style="list-style-type: none"> <li>• Patrol and mop up 25 feet. from control line</li> <li>• Continue monitoring and using aerial support to contain slop overs on Nobles Grades.</li> <li>• Monitor Kissimmee Billy Strand using aerial support.</li> <li>• Continue to cold trail and extinguish hot spots on Kissimmee Billy Strand.</li> <li>• Masticate access road in Sanctuary</li> </ul> <p>Purpose:</p> <ul style="list-style-type: none"> <li>• To keep fire confined and contained west of ADD 17/ADD 14 on east flank of fire</li> <li>• To protect structures and facilitate emergency evacuation.</li> <li>• To alert FHP of potential impact to I-75</li> <li>• Keep fire contained north of I-75</li> <li>• For possible contingency line</li> <li>• To keep fire contained east of Kissimmee Billy Strand while minimizing fire fighter exposure.</li> </ul> <p>End State:</p> <ul style="list-style-type: none"> <li>• Control fire perimeter west of ADD 17/ADD 14 to eliminate threat to Sanctuary area structures</li> <li>• Minimize risk to public traveling on I-75</li> <li>• Confine fire perimeter to reduce threats to resource values at risk</li> </ul>						
<b>7. Special Instructions:</b>						
<b>8. Division/Group Communication Summary</b>						
Function	Channel	RX Frequency N/W	RX Tone/NAC	TX Frequency N/W	TX Tone/NAC	Mode
COMMAND	12	166.6125		168.4000	110.9	A
COMMAND	13	168.7000		170.9750	110.9	A
TACTICAL	4	168.6000		168.6000		A
AIR TO GROUND	10	168.3250		168.3250		A
<b>9. Prepared By (Resource Unit Leader)</b>			<b>Approved By (Planning Section Chief)</b>		<b>Date</b>	<b>Time</b>
LAURIE OLIVER PSC3			LAURIE OLIVER		05/03/2017	0846

## Division/Group Assignment List (ICS 204 WF)

<b>1. Incident Name:</b>				<b>3.</b>			
COWBELL				<b>Branch:</b>		<b>Division/Group:</b>	
<b>2. Operational Period:</b>				<b>COWBELL</b>			
<b>DAY</b>							
Date/Time From: 05/04/2017 0800		THU		Date/Time To: 05/04/2017 2000		THU	
<b>4. Operations Personnel</b>							
<b>OPERATIONS CHIEF</b>		PAUL REYNOLDS 5/5			<b>AIR OPERATIONS</b>		RANDY CARTER 5/13
<b>DIVISION / GROUP SUPERVISOR</b>		JAMES WETTSTAED 5/4; WILLIE ADAMS 5/15 (T);					
<b>7. Special Instructions:</b>							
<p>Establish and maintain LCES during operational period. Do not engage in fire suppression activities along I-75 shoulders unless traffic hazards have been mitigated. Follow the tracked vehicle requirement restrictions.</p> <p>Utilize MIST tactics as outlined in Fire Operations Guide for BICY. Follow tracked vehicle requirement restrictions.</p>							
<b>8. Division/Group Communication Summary</b>							
Function	Channel	RX Frequency N/W	RX Tone/NAC	TX Frequency N/W	TX Tone/NAC	Mode	
COMMAND	12	166.6125		168.4000	110.9	A	
COMMAND	13	168.7000		170.9750	110.9	A	
TACTICAL	4	168.6000		168.6000		A	
AIR TO GROUND	10	168.3250		168.3250		A	
<b>9. Prepared By (Resource Unit Leader)</b>			<b>Approved By (Planning Section Chief)</b>			<b>Date</b>	<b>Time</b>
LAURIE OLIVER PSC3			LAURIE OLIVER 			05/03/2017	0846

## Division/Group Assignment List (ICS 204 WF)

<b>1. Incident Name:</b>			<b>3.</b>				
COWBELL			<b>Branch:</b>		<b>Division/Group:</b>		
<b>2. Operational Period:</b> <b>DAY</b>					<b>INITIAL ATTACK</b>		
Date/Time From: 05/04/2017 0800                    THU							Date/Time To: 05/04/2017 2000                    THU
<b>4. Operations Personnel</b>							
<b>OPERATIONS CHIEF</b>		PAUL REYNOLDS 5/5		<b>AIR OPERATIONS</b>		RANDY CARTER 5/13	
<b>DIVISION / GROUP SUPERVISOR</b>		AARON EDWARDS 5/5 (T)					
<b>5. Resources Assigned this Period</b>							
Strike Team / Task Force / Resource Designator		LWD	Leader		Number Persons	Drop Off PT./Time	Pick Up PT./Time
TFLD (T) O-182		05/05	AARON EDWARDS		1	ICP/0800	ICP/2000
HC2I CREW - T2IA - PR MA #3 C-7		05/13	SAEZ / SHAW		11	ICP/0800	ICP/2000
ENG3 ENGINE - T3 - CA-SHF - 51 E-99		05/06	BRIAN BUCHNER		5	ICP/0800	ICP/2000
ENG6 ENGINE - T6 - CSP 661 E-59		05/04	CHRIS CORRIGAN		2	ICP/0800	ICP/2000
ENG6 ENGINE - T6 - CO-PSF - 7-1 E-140		05/12	JOSHUA MORRIS		3	ICP/0800	ICP/2000
ENG 601			SHOOK		1	ICP/0800	ICP/2000
BICY SUPPRESSION BUGGY #3		05/31	SHOOK/AHSBAUGH		2	ICP /0800	ICP/2000
*BICY SWAMP BUGGY #5 E-64		05/31	HEINZ/ALLEN		2	ICP/0800	ICP/2000
*DUECE BUGGY IA - 607 E-132		05/01	RICHARDS / HOLT		2	ICP/0800	ICP/2000
EMPF O-249		05/12	SHAWN CLARK		1	ICP/0800	ICP/2000
<b>6. Control Operations/Work Assignments:</b>							
<p>Task:</p> <ul style="list-style-type: none"> <li>• Coordinate with BICY duty officer for notification of newly reported ignitions. Coordinate initial attack action with assigned aviation and /or ground assets</li> <li>• Determine IA resource pre-positioning needs across BICY and FPWR</li> <li>• Coordinate with the Liason if possibility of smoke impact to Highway 41, Highway 29 or Interstate 75.</li> </ul> <p>Purpose:</p> <ul style="list-style-type: none"> <li>• Ensure timely response on any IA within BICY and FPWR</li> </ul> <p>End State:</p> <ul style="list-style-type: none"> <li>• Protect human life. Minimize environment damage to protect habitat of threatened and endangered species. Minimize damage to public and private property</li> </ul>							
<b>7. Special Instructions:</b>							
<p><b>IA will be staged at the Deep Lake staging area.</b>          Follow tracked vehicle requirement restrictions. Establish and maintain LCES during operational period. Utilize MIST tactics as outlined in Fire Operations Guide for BICY. <b>All initial attack will go through BICY Fire Dispatch Center. Incident within an Incident will go through Cowbell communications.</b>          Engines to patrol MM87 twice daily, monitor by air</p>							
<b>8. Division/Group Communication Summary</b>							
Function	Channel	RX Frequency N/W	RX Tone/NAC	TX Frequency N/W	TX Tone/NAC	Mode	
BICY RPTR	1	172.4250	1035	170.1000	1035	D	
BICY RPTR	2	172.4250	1035	171.6250	1035	D	
PANTHER RPTR	7	164.6250	1188	163.1500	1188	D	
TACTICAL	9	166.8250		166.8250		A	
AIR TO GROUND	6	169.1125		169.1125		A	
<b>9. Prepared By (Resource Unit Leader)</b>			<b>Approved By (Planning Section Chief)</b>		<b>Date</b>	<b>Time</b>	
LAURIE OLIVER PSC3			LAURIE OLIVER		05/03/2017	1700	





# AIR OPERATIONS SUMMARY

0800-2000

OPERATIONAL PERIOD DATE: 05-04-2017

PREPARED DATE/TIME: 05/03/2017 1600

<b>1. INCIDENT NAME:</b> Cowbell	<b>2. PREPARED BY:</b> Randy Carter	<b>3. Sunrise:</b> 06:45 <b>Sunset:</b> 19:55
<b>4. REMARKS</b> (Safety Notes, Hazards, Air Operations Special Equipment, etc.): Medivac Aircraft: N16HX MTR- Located along state road 29. Fire Dispatch gets MTR activity every morning Do not over fly structures with external load missions. All aircraft should use strobes and running lights in smoky conditions. Hazards: Snags, non-incident aircraft, and winds. Contract helicopter working special use permit in North Central portion of BICY. Area identified on pilot briefing board. ATGS has air to air communications. Cease all operations at sunset		
<b>5. Squawk 1255</b> (A-47) TFR—7/7369 ZMA FL, Airspace 24 nm NE of Ochopee SFC 3000ft. Contact 118.825 NOTAM – 04/054 – Airspace firefighting aircraft 5nm of (9FL7) SFC 3000ft.		

6. PERSONNEL	Phone	7. FREQUENCIES	AM	FM	8. FIXED WING	FAA#/Base
Air Operations—Randy Carter	501-802-6708	Air/Air Rotor (A-5) Air/Air Fixed Wing (A-6) Air/Ground Cowbell	123.575 118.825	168.3250 RX/TX (A) 169.1125 RX/TX (A) 167.9500 RX/TX (A)	Air Attack	197GB (A-18)—Aero Commander MKY
ATGS: Mike Vanderpath ATGS (T): Trevor Pollock	208-553-3577 435-592-4919	Air/Ground IA Air/Ground (A-11)		169.7250 RX N1514 163.3875 TX N1738		
Oasis Helibase (9FL7) HEB2 Bob Madison HEB2(T) Jason Notz	239-695-0278 505-385-0401 570-241-5921	Flight Following (BICY)				
HMG B Mekel Hofman N16HX	541-410-5025					
HEMG Melissa Olsen 3PH	239-431-1046					
HMG B—Kevin Doran H-718	760-808-0190					
Big Cypress Fire Dispatch	239-695-9280 x 104	Air/Guard Deck		168.6250 RX/TX Tone 110.9 166.7750		

**9. HELICOPTERS (Use Additional Sheets As Necessary)**

FAA N# or Designator	TY	MAKE/MODEL	BASE	START	REMARKS	FAA N# or Designator	TY	MAKE/MODEL	BASE	START	REMARKS
718 (A-16)	1	CH-54	Oasis	0900	Tanked	16HX (A-9)	2	Bell 205	Oasis	0900	Crew/Bucket
743PH (A-40)	3	Bell 407	Oasis	0800	Map/Recon						

TYPE/FUNCTION	NAME OF PERSONNEL OR CARGO (if applicable) OR INSTRUCTIONS FOR TACTICAL AIRCRAFT	MISSION START	FLY FROM	FLY TO
Mapping/Reconnaissance	As Requested	0930		
Water Drops	As Requested	0930		

# INCIDENT RADIO COMMUNICATIONS PLAN (ICS 205)

3. Operational Period: DAY											
Date/Time From: 05/04/2017 0800		Date/Time To: 05/04/2017 2000									
Zone Group	Ch #	Function	Assignment	RX Freq	RX Tone/NAC	TX Freq	TX Tone/NAC	Mode (A,D, or M)	Remarks		
	1	CARNS RPT	Initial Attack	172.4250	1035	170.1000	1035	D	Preserve RPTR		
	2	OASIS RPT	Initial Attack	172.4250	1035	171.6250	1035	D	Preserve RPTR		
	3	BCY LCL		166.7750	No Tone	166.7750	No Tone	A			
	4	BICY TAC 1	Division A /D	168.6000	No Tone	168.6000	No Tone	A			
	5	BICY LCL 2	MM - 87	168.2500	No Tone	168.2500	No Tone	A			
	6	A/G 59	Initial Attack	169.1125	No Tone	169.1125	No Tone	A			
	7	Panther RPT	Initial Attack	164.6250	1188	163.1500	1188	D	Panther Refuge RPTR		
	8	PANTHER TAC 1	DIVISION G/Z/K	166.7500	No Tone	166.7500	No Tone	A			
	9	PANTHER TAC 2	Initial Attack	166.8250	No Tone	166.8250	No Tone	A			
	10	A/G 85	ALL DIVISIONS	168.3250	No Tone	168.3250	No Tone	A			
	11	Everglades TAC 1		166.7250	0659	166.7250	0659	D			
	12	CMD 12	DIVISION A/Z	166.6125	No Tone	168.4000	110.9	A	Command RPTR-Linked		
	13	CMD 13	DIVISION D/G/Z	168.7000	No Tone	170.9750	110.9	A	Command RPTR-Linked		
	14										
	15	CMD 15	DIV G	173.0375	No Tone	167.3250	110.9	A	Command RPTR-Linked		
	16	AIR GUARD		168.6250	No Tone	168.6250	110.9	A			
		Signature: /s/ Mark Spann									
		Date/Time: 05/03/2017 1200									
		Name: RON REGAN 772-631-2585									

# STATE IA RADIO COMMUNICATIONS PLAN (ICS 205)

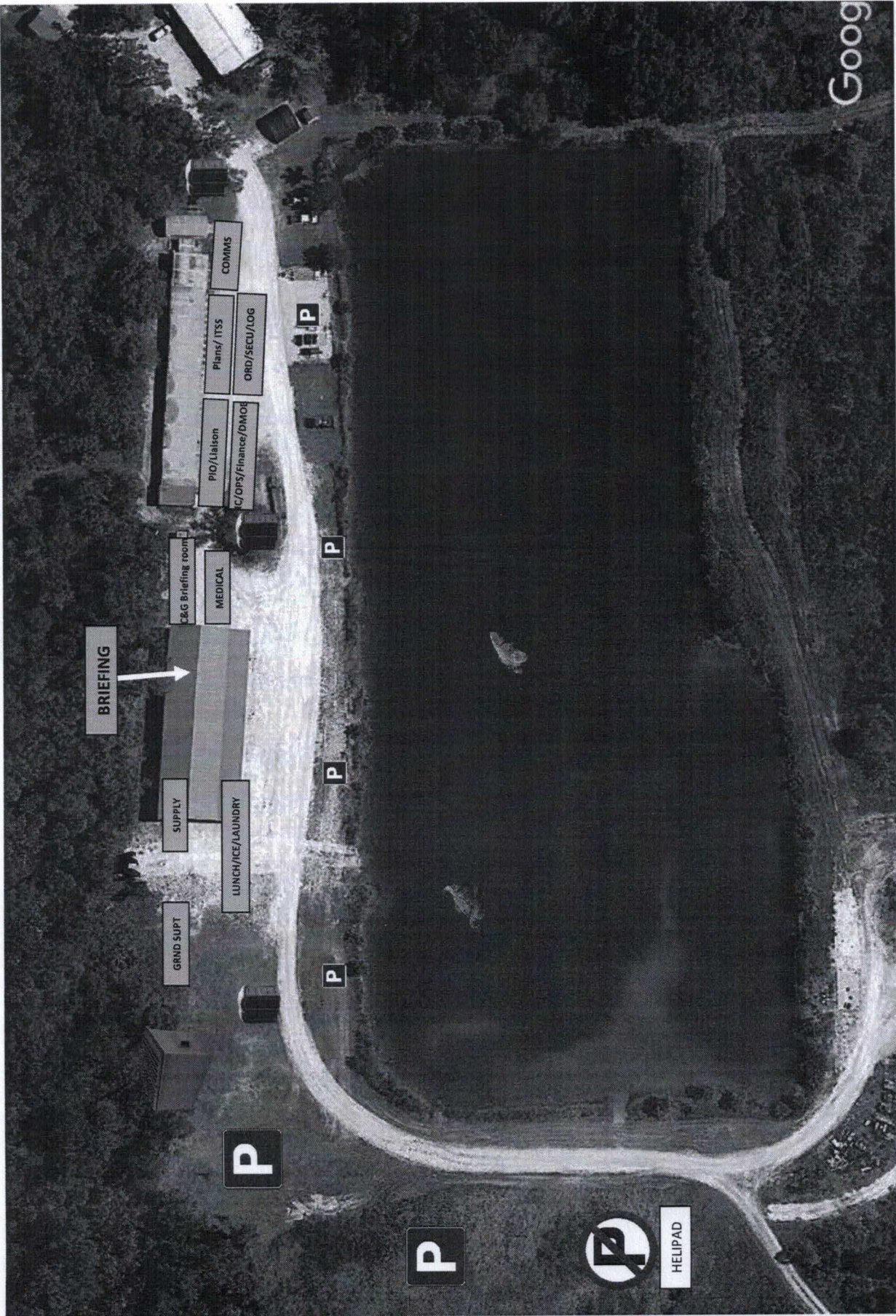
3. Operational Period: DAY		Date/Time From: 05/04/2017 0800 Date/Time To: 05/04/2017 2000											
Zone Group	Ch #	Function	Assignment	RX Freq	RX Tone/NAC	TX Freq	TX Tone/NAC	Mode (A,D, or M)	Remarks				
	1	CARNS RPT	Initial Attack	172.4250	1035	170.1000	1035	D	Preserve RPTR				
	2	OASIS RPT	Initial Attack	172.4250	1035	171.6250	1035	D	Preserve RPTR				
	3	BCY LCL		166.7750	No Tone	166.7750	No Tone	A					
	4	BICY TAC 1	Division A /D	168.6000	No Tone	168.6000	No Tone	A					
	5	BICY LCL 2	MM - 87	168.2500	No Tone	168.2500	No Tone	A					
	6	A/G 59	Initial Attack	169.1125	No Tone	169.1125	No Tone	A					
	7	Panther RPT	Initial Attack	164.6250	1188	163.1500	1188	D	Panther Refuge RPTR				
	8	PANTHER TAC 1	DIVISION G/K/Z	166.7500	No Tone	166.7500	No Tone	A					
	9	PANTHER TAC 2	Initial Attack	166.8250	No Tone	166.8250	No Tone	A					
	10	A/G 85	ALL DIVISIONS	168.3250	No Tone	168.3250	No Tone	A					
	11	Everglades TAC 1		166.7250	0659	166.7250	0659	D					
	12	RED V22	STATE IA	154.2650	No Tone	154.2650	156.7	A					
	13	WHITE V21	STATE IA	154.2800	No Tone	154.2800	156.7	A					
	14	BLUE V23	STATE IA	154.2950	No Tone	154.2950	156.7	A					
	15	CMD 15	DIV G	173.0375	No Tone	167.3250	110.9	A	Command RPTR-Linked				
	16	AIR GUARD		168.6250	No Tone	168.6250	110.9	A					
Name: RON REGAN 772-631-2585				Signature: /s/ RON REGAN									
				Date/Time: 05/03/2017 1800									

# MEDICAL PLAN (ICS 206)

<b>1. Incident Name:</b> Cowbell Fire		<b>2. Operational Period:</b> Date: 05-04-5-17 Time From: 0800      Time To: 2000					
<b>3. Medical Aid Stations:</b>							
Name	Location	Contact Number(s)/Frequency	Paramedics on Site?				
Cody Gilmore (EMPF)/ Shawn Clark (EMPF)	As assigned daily	918-703-9103/918-770-5029	<input checked="" type="checkbox"/> Yes	<input type="checkbox"/> No			
<b>4. Transportation (indicate air or ground):</b>							
Ambulance Service	Location	Number(s)/Frequency	Level of Service				
Collier County EMS (ground)	Everglades City (Medic 61)	911	<input checked="" type="checkbox"/> ALS	<input type="checkbox"/> BLS			
Collier County Med-Flight (air)	Naples Airport	911	<input checked="" type="checkbox"/> ALS	<input type="checkbox"/> BLS			
6HX Bell 205 (air) medical evacuation	Oasis Heli-base	168.3250 (A/G 85)	<input type="checkbox"/> ALS	<input checked="" type="checkbox"/> BLS			
Miami Dade Fire Rescue air hoist	Miami	911	<input type="checkbox"/> ALS	<input checked="" type="checkbox"/> BLS			
<b>5. Hospitals:</b>							
Hospital Name	Address	Contact Number(s)	Travel Time		Trauma Center	Burn Center	Helipad
			Air	Ground			
Physicians Regional Collier Blvd	8300 Collier Blvd. Naples, FL 34114 Lat:26°6.313'/Long: -81°41.106'	239-354-6000 (Main) 239-354-6190 (ER)	15	50	<input type="checkbox"/> Yes Level: _____	<input type="checkbox"/> Yes <input checked="" type="checkbox"/> No	<input checked="" type="checkbox"/> Yes <input type="checkbox"/> No
Physicians Regional Pine Ridge	6101 Pine Ridge Road, Naples 34119 Lat:26°12.833'/Long: -81°43.954'	239-348-4000 (Main) 239-304-4748 (ER)	15	50	<input type="checkbox"/> Yes Level: _____	<input type="checkbox"/> Yes <input checked="" type="checkbox"/> No	<input checked="" type="checkbox"/> Yes <input type="checkbox"/> No
Naples Community Hospital	350 7 <sup>th</sup> Street North, Naples 34102 Lat:26°9.046'/Long: -81°47.907'	239-513-7709 (Main) 239-436-5151 (ER)	15	60	<input checked="" type="checkbox"/> Yes Level: <u>2</u>	<input type="checkbox"/> Yes <input checked="" type="checkbox"/> No	<input checked="" type="checkbox"/> Yes <input type="checkbox"/> No
Jackson Memorial Hospital	1611 NW 12 Avenue, Miami Lat:25°47.508'/Long: -80°12.756'	305-585-1111 (Main) 305-585-6910 (ER)	20	60	<input checked="" type="checkbox"/> Yes Level: <u>1</u>	<input checked="" type="checkbox"/> Yes <input type="checkbox"/> No	<input checked="" type="checkbox"/> Yes <input type="checkbox"/> No
Kendal Regional Medical Center	11750 SW 40 <sup>th</sup> St., Miami 33175 Lat:25°43.916'/Long: -80°23.148'	305-223-3000 (Main) 305-227-5544 (ER)	20	50	<input checked="" type="checkbox"/> Yes Level: <u>1</u>	<input type="checkbox"/> Yes <input checked="" type="checkbox"/> No	<input checked="" type="checkbox"/> Yes <input type="checkbox"/> No
EPN Urgent Care Center	6400 Davis Boulevard Suite 103, Naples, 34104	239-775-2300 (Main)		29	No	No	No
<b>6. Special Medical Emergency Procedures:</b>							
<ul style="list-style-type: none"> <li>• Patient or nearest responder notifies Group Supervisor who will respond to the scene and become the "incident within an incident" (IWI) commander.</li> <li>• Group Supervisor will notify nearest medical responder and ICP-Communications of the incident and "Nine Line" report attached to the back of this IAP or page 108 of the IRPG.</li> <li>• EPN Urgent Care Center is for non-Life threatening medical care, can only be reached by ground transport. Hours: Mon – Sat 0800-1900; Sunday 0800-1600</li> </ul>							
<b>7. Prepared by (MEDL):</b> Matthew Moran (T)/ Shanna Ellis Signature: <i>/s/ Matthew Moran Shanna F. Ellis</i>							
<b>8. Approved by (SOF1):</b> Brian Beisel Signature: <i>/s/ Brian Beisel</i>							
ICS 206	IAP Page _____	Date/Time: 05/03/2017					

**PHONE LIST - COWBELL FIRE** as of 4/26/2017

<b>Position</b>	<b>Name</b>	<b>Position</b>	<b>Name</b>	<b>Phone Number</b>	<b>Phone Number</b>
<b>COMMAND</b>		<b>OPERATIONS</b>			
Incident Commander T3	Paul Varnedoe	Ops Section Chief	Paul Reynolds	423-650-2184	662-418-9743
Incident Commander (T)	Byron Hart	Cowbell Fire	James Wettstaed	850-264-9567	770-530-3950
Liaison Officer	David Parker	Initial Attack	Willie Adams	910-546-6202	404-909-2757
Public Information	Michael R Williams			470-599-3926	
Public Information (T)	Gil Knight			218-349-0679	
Safety Officer	Mark Helm			559-905-6554	
<b>PLANNING</b>					
Plans Section Chief	Michael J Williams			828-835-0094	
Plans Section Chief/DMOB	Laurie Oliver	<b>AIR OPERATIONS</b>		970-759-9611	
Documentation Unit	Bob Sobczak	Air Ops Branch Director (T)	Randy Carter	239-340-0200	501-802-6708
Technology Support T)	Scott Bishaw	Oasis Helibase Manager	Mark Oetzmann	239-595-9143	208-315-5030
GISS	Mindy Wright			239-450-2462	
READ	Brady Dodd	<b>LOGISTICS</b>		828-620-3176	
		Chief	Steve Frick		218-821-6271
		Ground Support Unit Leader			
<b>FINANCE</b>		Communications	Ron Regan		828-772-8514
Chief	Megan Macht	Ordering Manager	Tammie Pernas	970-749-9734	305-915-5060
		Base Camp Manager	Kyler McCarrel		970-261-8046
		Medical Unit Leader	Shawn Clark		918-770-5029
		Medical Unit Leader	Cody Gilmore		918-703-9103
		RADO/EDRC	Mira Peters		335-271-8908
		Security Unit	Brett Wehrley		318-305-0640
		Security Unit	Danny Moss		228-238-6327
Big Cypress National Preserve	Duty Officer			239-719-0241	



COWBELL FIRE ICP

81°30'W

81°20'W

81°10'W

81°0'W

80°50'W

26°30'N  
26°20'N  
26°10'N  
26°0'N  
25°50'N  
25°40'N

26°30'N  
26°20'N  
26°10'N  
26°0'N  
25°50'N  
25°40'N

↑  
**Immokalee**


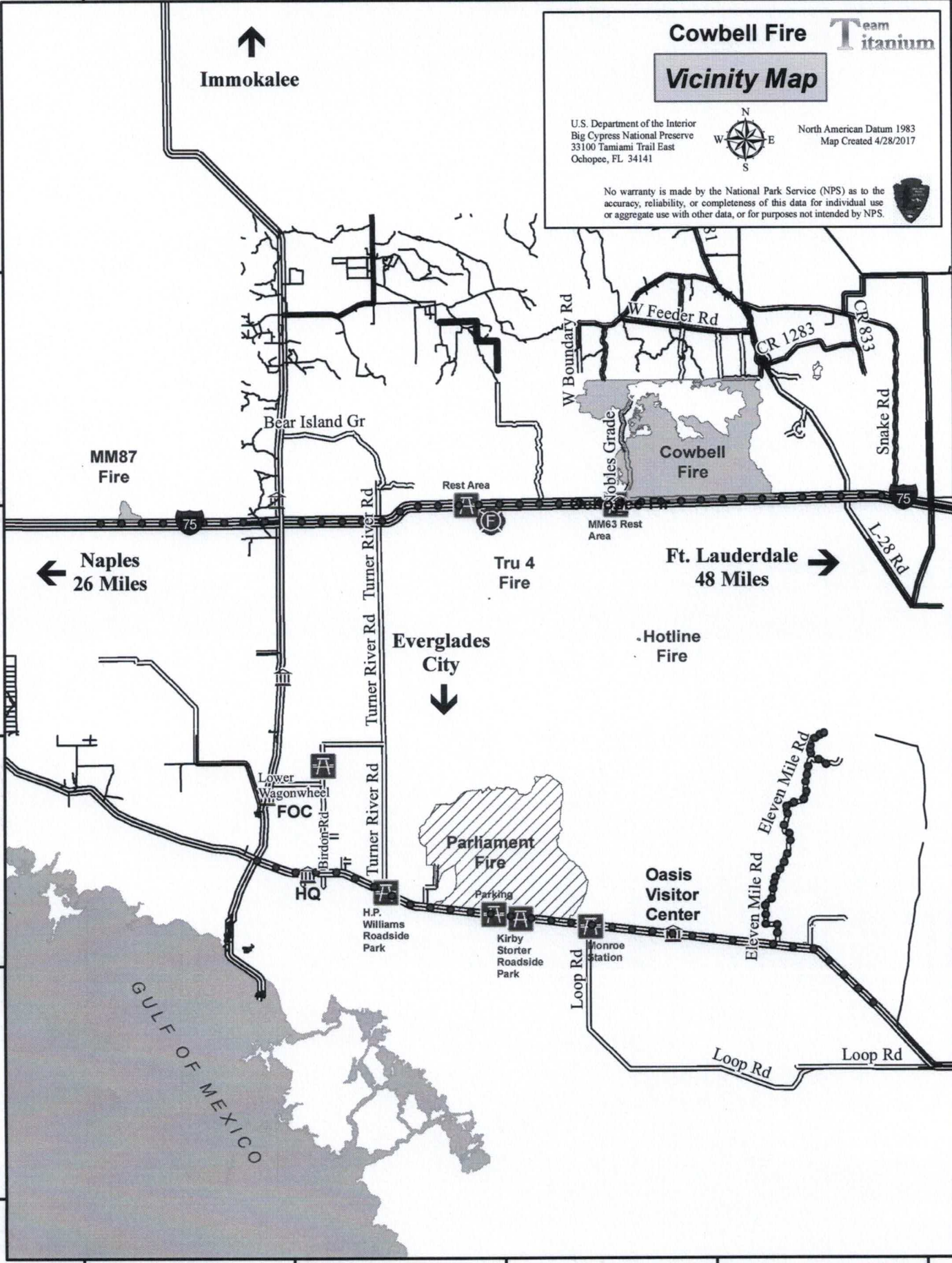
**Cowbell Fire** **Team titanium**

**Vicinity Map**

U.S. Department of the Interior  
Big Cypress National Preserve  
33100 Tamiami Trail East  
Ochopee, FL 34141

North American Datum 1983  
Map Created 4/28/2017

No warranty is made by the National Park Service (NPS) as to the accuracy, reliability, or completeness of this data for individual use or aggregate use with other data, or for purposes not intended by NPS.

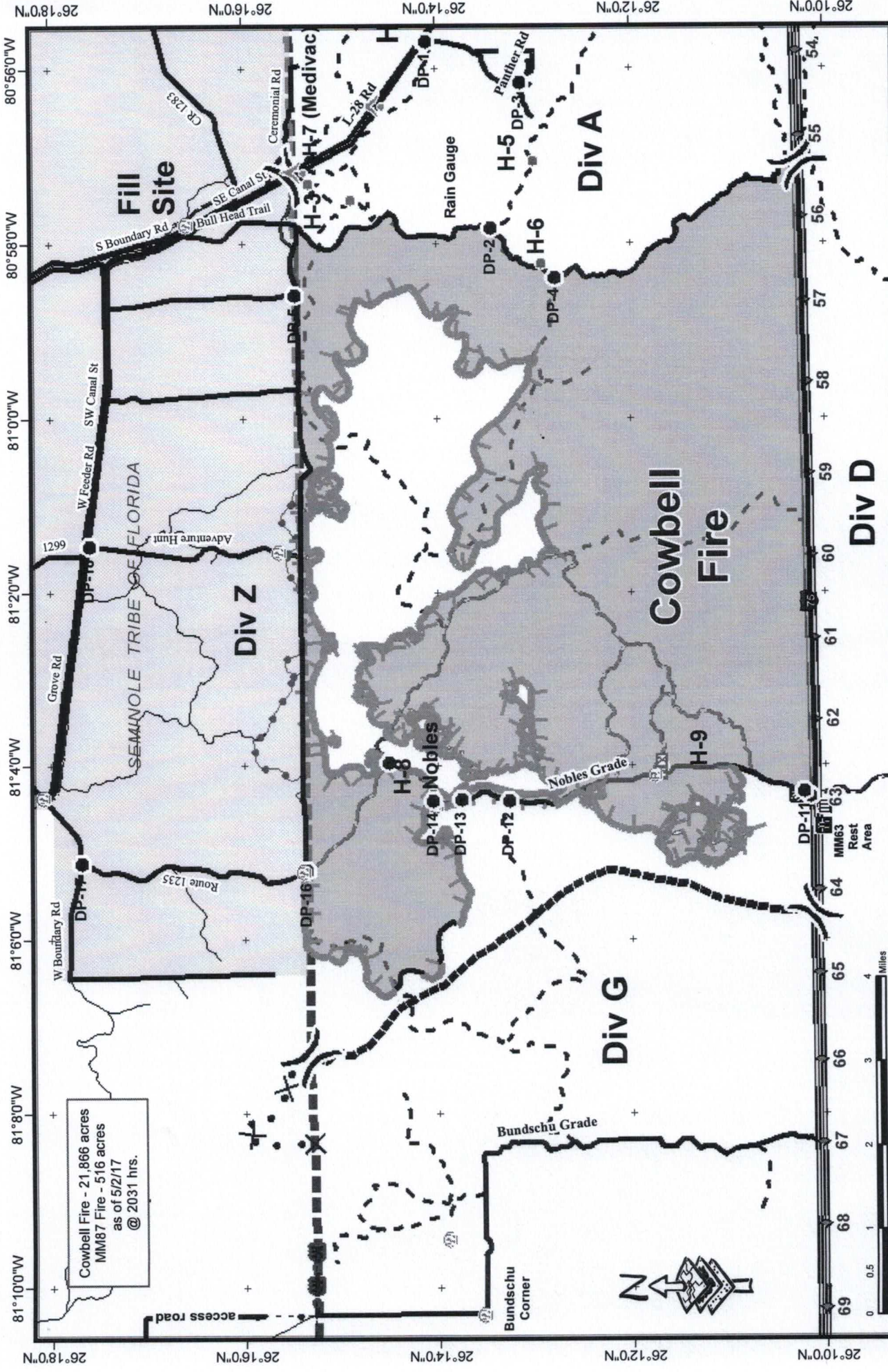
81°30'W

81°20'W

81°10'W

81°0'W

80°50'W



Cowbell Fire - 21,866 acres  
 MM87 Fire - 516 acres  
 as of 5/2/17  
 @ 2031 hrs.



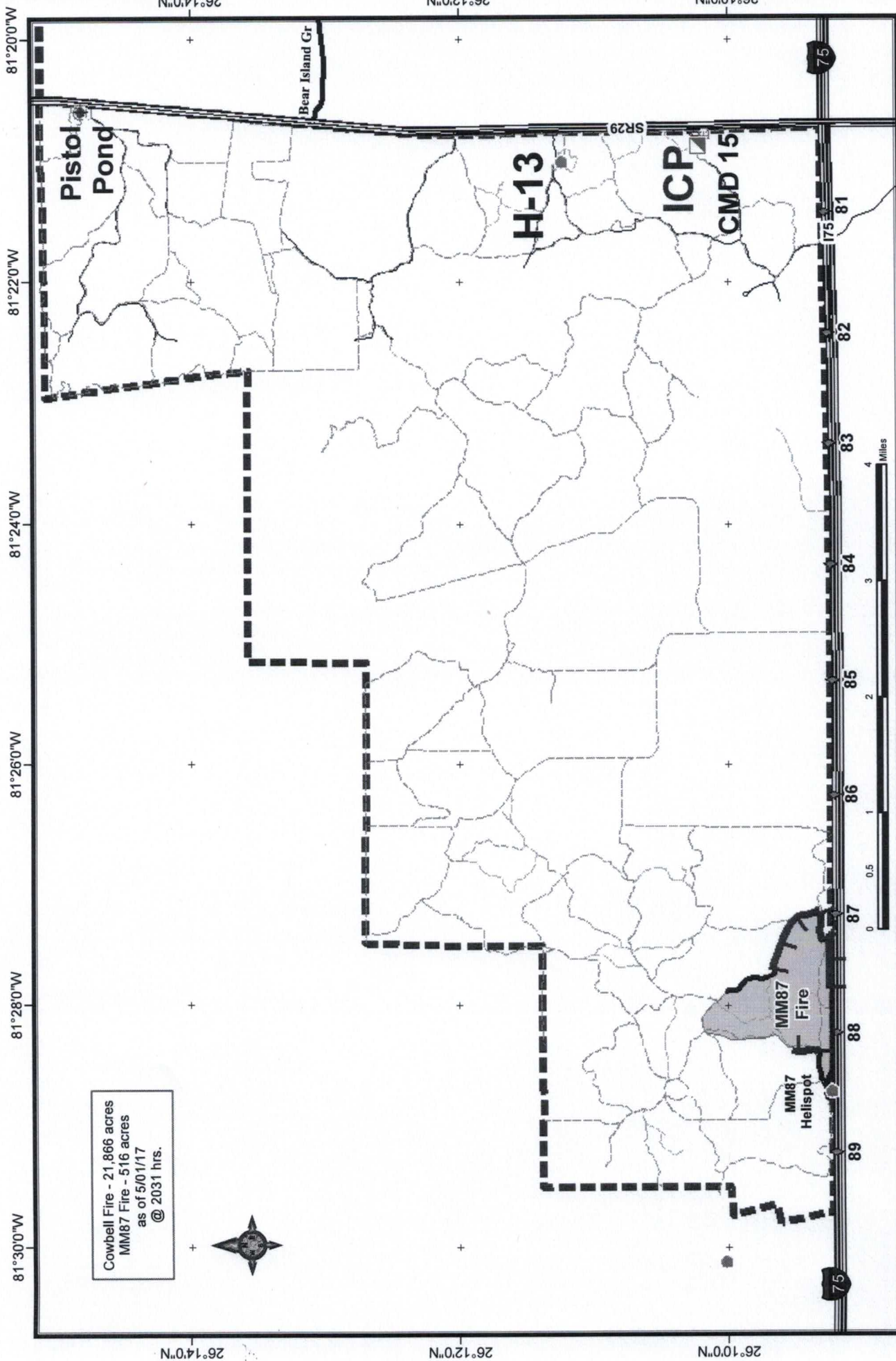
**Team Titanium**

- Helibase
- Bridge Locations
- Repeater
- Aerial Hazard
- Private Structures
- Bypass for wet area
- Rain Gauge
- Drop Point
- Helispot
- Division
- Mobile Weather
- Uncontrolled Fire Edge
- Completed Line
- Mastication Line
- Mowed Line
- Proposed Line

**Cowbell Fire**  
 FL-BCP-017033  
**IAP Map**  
 May 3, 2017  
 Day Shift NAD 83 UTM 17







Cowbell Fire - 21,866 acres  
 MM87 Fire - 516 acres  
 as of 5/01/17  
 @ 2031 hrs.



- ◆ Dip Site
- Helispot
- ▣ Incident Command Post
- Ⓡ Repeater
- ⊙ Water Source
- ⋯ NWR Special Use Roads
- ▭ Uncontrolled Fire Edge
- ▬ Completed Line
- ⋯ NWR Roads
- ▬ Road
- ▭ Wildlife Daily Fire Perimeter
- Ⓜ Office
- ◆ Mile Marker
- ▬ CR 29; SR 29
- ▬ I - 75
- ▬ Improved Road
- ▬ westrids
- 🐾 Florida Panther NWR
- 🌿 BICY preserve

**Team Titanium**

**Cowbell Fire**  
 FL-BCP-017033  
**IAP Map**  
 May 3, 2017  
 MM87

NAD 83 UTM 17

REQUEST NUMBER	RESOURCE NAME	ITEM CODE	DEMOB DATE	TRAVEL METHOD
O-35	THELEN, JENNIFER	PIO1	05/02/2017	
O-69	HAMM, CYNTHIA M	PTRC	05/02/2017	POV
O-70	PERNAS, TAMMIE	THSP	05/02/2017	POV
O-74	ANGELO, MARTIN D	FFT2	05/02/2017	
O-77	MATEO, MATTHEW	ENGB	05/02/2017	AOV
O-78	ASHBAUGH, SAM	ENGB	05/02/2017	POV
O-81	CONNOLLY, NICHOLAS R	HECM	05/02/2017	AOV
E-89	ENGINE - T6 - 607	ENG6	05/04/2017	
O-72	RICHARDS, CHRIS	TFLD	05/04/2017	AOV
O-73	SHAW, BLAKE	TFLD	05/04/2017	POV
O-75	BOWDEN, CONNOR	FFT2	05/04/2017	POV
O-210	LYNCH, JERRY GLYNN	EQPM	05/04/2017	AIR
E-59	ENGINE - T6 - CSP 661	ENG6	05/05/2017	AOV
E-157	ENGINE - T6 - 658	ENG6	05/05/2017	AOV
E-159	MASTICATOR - HENDRY	MAST	05/05/2017	OTH
O-203	VARNEDOE, PAUL	ICT3	5/5/2017	AOV
O-224	DEASY, JASON TODD	HEQB	05/05/2017	A/R
O-225	ROSE, GARY	HEQB	05/05/2017	A/R
E-99	ENGINE - T3 - CA-SHF - 51	ENG3	05/06/2017	AIR
O-111	O'LEARY, MIKE	ASGS	05/06/2017	AOV
O-167	MANLEY, JOSHUA D	THSP	05/06/2017	A/R
O-182	EDWARDS JR, AARON	DIVS	05/06/2017	AOV
O-215	MOSS, DANIEL	SEC1	05/06/2017	AOV
O-250	GILMORE, CODY JAMES	EMPF	05/06/2017	AIR
O-260	BISHAW, SCOTT K	ITSS	05/06/2017	POV
O-262	AUBIN, GISELE	DRIV	05/06/2017	POV
O-101	REGAN, RONALD	COML	05/07/2017	A/R
O-255	FRICK, STEVEN CARL	FACL	05/07/2017	AIR

### Medical Incident Report- "9 Line"

**FOR ALL MEDICAL EMERGENCIES: IDENTIFY ON SCENE INCIDENT COMMANDER BY NAME AND POSITION AND ANNOUNCE "MEDICAL EMERGENCY" TO INITIATE RESPONSE FROM IMT COMMUNICATIONS/DISPATCH.**

**Use items one through nine to communicate situation to communications/dispatch.**

**1. CONTACT COMMUNICATIONS-**

*Ex: "Cowbell Communications, Div. Alpha. Stand-by for Priority Medical Incident Report." (If life threatening request designated frequency be cleared for emergency traffic.)*

**2. INCIDENT STATUS:** Provide incident summary and command structure.

<b>Nature of Injury/Illness</b>		<i>Describe the injury (Ex: Broken leg with bleeding)</i>
Incident Name		<i>Geographic Name + "Medical" (Ex: Trout Meadow Medical)</i>
Incident Commander		<i>Name of IC</i>
Patient Care		<i>Name of Care Provider (Ex: EMT Smith)</i>

**3. INITIAL PATIENT ASSESSMENT:** Complete this section for each patient. This is only a brief, initial assessment. Provide additional patient info after completing this 9 Line Report.

Number of Patients:	Male / Female	Age:	Weight:
Conscious? <input type="checkbox"/> YES <input type="checkbox"/> <b>NO = MEDEVAC!</b>			
Breathing? <input type="checkbox"/> YES <input type="checkbox"/> <b>NO = MEDEVAC!</b>			
Mechanism of Injury: <i>What caused the injury?</i>			
Lat/Long (Datum NAD83)			

**4. SEVERITY OF EMERGENCY, TRANSPORT PRIORITY**

SEVERITY	TRANSPORT PRIORITY
<input type="checkbox"/> <b>URGENT-RED Life threatening injury or illness.</b> <i>Ex: Unconscious, difficulty breathing, bleeding severely, 2<sup>o</sup> - 3<sup>o</sup> burns more than 4 palm sizes, heat stroke, disoriented.</i>	Ambulance or MEDEVAC helicopter. Evacuation need is <b>IMMEDIATE.</b>
<input type="checkbox"/> <b>PRIORITY-YELLOW Serious Injury or illness.</b> <i>Ex: Significant trauma, not able to walk, 2<sup>o</sup> - 3<sup>o</sup> burns not more than 1-2 palm sizes.</i>	Ambulance or consider air transport if at remote location. Evacuation may be <b>DELAYED.</b>
<input type="checkbox"/> <b>ROUTINE-GREEN</b> Not a life threatening injury or illness. <i>Ex: Sprains, strains, minor heat-related illness.</i>	Non-Emergency. Evacuation considered <b>Routine of Convenience.</b>

**5. TRANSPORT PLAN:**

**Air Transport:** (Agency Aircraft Preferred)

<input type="checkbox"/> Helispot	<input type="checkbox"/> Short-haul/Hoist	<input type="checkbox"/> Life Flight	<input type="checkbox"/> Other
-----------------------------------	---	--------------------------------------	--------------------------------

**Ground Transport:**

<input type="checkbox"/> Self-Extract	<input type="checkbox"/> Carry-Out	<input type="checkbox"/> Ambulance	<input type="checkbox"/> Other
---------------------------------------	------------------------------------	------------------------------------	--------------------------------

**6. ADDITIONAL RESOURCE/EQUIPMENT NEEDS:**

<input type="checkbox"/> Paramedic/EMT(s)	<input type="checkbox"/> Crew(s)	<input type="checkbox"/> SKED/Backboard/C-Collar
<input type="checkbox"/> Burn Sheet(s)	<input type="checkbox"/> Oxygen	<input type="checkbox"/> Trauma Bag
<input type="checkbox"/> Medication(s)	<input type="checkbox"/> IV/Fluid(s)	<input type="checkbox"/> Cardiac Monitor/AED
<input type="checkbox"/> Other (i.e. splints, rope rescue, wheeled litter)		

**7. COMMUNICATIONS:**

Function	Channel Name/Number	Receive (Rx)	Tone/NAC *	Transmit (Tx)	Tone/NAC *
COMMAND	CARNS Rpt Channel 1	172.4250	1035	170.1000	1035
COMMAND	OASIS Rpt Channel 2	172.4250	1035	171.6250	1035
COMMAND	CMD Channel 12	166.6125	No Tone	168.4000	110.9
AIR-TO-GRND	AG/85 Channel 10	168.3250	No Tone	168.3250	No Tone
TACTICAL					

\*(NAC for digital radio system)

**8. EVACUATION LOCATION:**

Lat/Long (Datum NAD83) <i>EX: N 40 42.45' x W 123 03.24'</i>	
Patient's ETA to Evacuation Location:	
Helispot/Extraction Size and Hazards:	

**9. CONTINGENCY:**

<b>Considerations:</b> If primary options fail, what actions can be implemented in conjunction with primary evacuation method? Be thinking ahead...	<b>REMEMBER:</b> Confirm ETA's of resources ordered Act according to your level of training Be Alert. Keep Calm. Think Clearly. Act Decisively.
---	---

