

# Team Titanium

## Incident Action Plan

Day Operational Period

Saturday 4/29/17

0800-2000

## Cowbell Fire

FL-BCP-017033

PPKX1417 (1502)/ FFF2000000KX140

(21,840 acres, 75% contained)

MM 87

FL-FPR-170001

PRKZP317 (1502) / FFF2000000KZP30

(516 acres, 80% contained)




QR CODE  
INCIDENT MAP

**STOP....THINK...TALK...*THEN ACT!***

INCIDENT OBJECTIVES	1. Incident Name <b>Cowbell Fire</b>	2. Date Prepared <b>4/28/217</b>	3. Time Prepared <b>1800</b>
4. Operational Period <b>4/29/17 0800 - 2000</b>			
5. General Control Objectives For The Incident			
<u>Objectives for the Incident:</u>			
<ul style="list-style-type: none"> <li>• Protection of human life is top priority through the use of sound risk management decisions that are commensurate with values at risk.</li> <li>• Protect private property and infrastructure, federal facilities, critical transportation corridors, recreational and cultural resource values, T&amp;E species and their habitat (e.g. Florida Panther, Florida bonneted bat, Red-Cockaded Woodpecker), and wilderness values through coordination with READS and following MIST Tactics on initial and extended attack fires.</li> <li>• Provide opportunities to communicate and educate the public on the role of fire in the BCP and FPR ecosystems through social media and other outlets.</li> <li>• Provide training opportunities for Preserve, State, and local federal fire agency personnel to actively enhance successional planning of future firefighting personnel.</li> <li>• Sustain and enhance relationships with the people we serve.</li> </ul>			
<u>Control Objectives:</u>			
<ul style="list-style-type: none"> <li>• Utilize confine, contain, and point source protection strategies and tactics that commit responders only to operations where and when they can be successful.</li> <li>• In order to minimize impacts to high values including Seminole and Miccosukee tribal lands, Sanctuary community, and private land within and near to the boundaries of the Big Cypress National Preserve and Florida Panther Wildlife Refuge, keep Cowbell fire: <ul style="list-style-type: none"> <li>○ West of Add 14 and Add 17</li> <li>○ South of the Preserve boundary</li> <li>○ North of Interstate 75</li> <li>○ East of State Highway 29</li> </ul> </li> <li>• In order to minimize impacts to infrastructure and private land within and adjacent to the Florida Panther Wildlife Refuge, keep the MM87 fire: <ul style="list-style-type: none"> <li>○ West of Fakahatchee Strand.</li> <li>○ North of I-75.</li> <li>○ South and east of the refuge boundary.</li> </ul> </li> <li>• Provide initial attack for Big Cypress National Preserve and Florida Panther Refuge in coordination with local resources.</li> <li>• Minimize impact on I-75, State Road 29 and US Highway 41 in order to avoid safety threats to the public and fire fighters.</li> </ul>			
6. Weather forecast for Period See attached weather forecast.			
7. General Safety Message Look up, look down, look all around for hazards, recognize them and mitigate them.			
8. ATTACHMENTS (X IF ATTACHED)			
[ X ] Organization List - ICS 203	[ X ] Medical Plan - ICS 206	[ X ] Base Camp Map	
[ X ] Division Assignment Lists - ICS 204	[ X ] Air Ops - ICS 220	[ X ] Vicinity Map	
[ X ] Communications Plan - ICS 205	[ X ] Incident Map	[ X ] Phone List	
9. Prepared By (Planning Section Chief) <b>Michael J Williams PSC3</b>	10. Approved By (Incident Commander) <b>Paul Varnedoe ICT3 TT</b>		

## ORGANIZATION ASSIGNMENT LIST (ICS 203)

<b>1. Incident Name:</b>		<b>2. Operational Period:</b> DAY	
COWBELL		Date/Time From: 04/29/2017 0800	Date/Time To: 04/29/2017 2000
		SAT	SAT
<b>3. Incident Commander(s) and Command Staff:</b>		<b>ORDERING MANAGER</b>	TAMMIE PERNAS
IC/UC	PAUL VARNEDOE BYRON HART (T)	RADO/EDRC	MIRA PETERS
LIAISON OFFICER	ANDY GASTON JEFFREY OWENBY (T)	BASE CAMP MANAGER	KYLER MCCARREL DON RUMBACK
SAFETY OFFICER	MARK HELM	EQUIPMENT MANAGER	JEFF COOPER (T)
INFORMATION OFFICER	MICHAEL R WILLIAMS JASON NEDLO (T)	<b>7. Operations Section:</b>	
		OPS SECTION CHIEF	PAUL REYNOLDS
<b>4. Agency/Organization Representative(s):</b>			
<b>Agency/Organization</b>	<b>Name</b>	<b>DIVISION/GROUP</b>	<b>A / D</b>
BIG CYPRESS NATIONAL PRESERVE	TAMMY WHITTINGTON J.D. LEE		GEORGE ALLALUNIS DOUGLAS CATES (T)
BICY CHIEF OF FIRE AND AVIATION	JORDON MCKNIGHT		JAMES WETTSTAED WILLIE ADAMS (T)
BICY /PANTHER AFMO	BYRON HART		ROBERT BERTOLINA AARON EDWARDS (T)
PANTHER ZONE FMO	CASS PALMER		WILLARD WORLEY
COLLIER COUNTY SHERIFF	LT. JAKE WALKER	<b>7b. Air Operations Branch:</b>	
SEMINOLE TRIBE OF FLORIDA	GRANT STEELMAN	AIR OPS	MIKE MOWERY
FLORIDA HIGHWAY PATROL	LT. JOSEPH BOWERS	OASIS HELIBASE MANAGER	MARK OETZMANN
GREATER NAPLES FIRE RESCUE	J. NOLAN SAPP	<b>8. Finance/Administration Section:</b>	
FFS COLLIER CO. FOREST AREA SUP	TONY CURELLA	CHIEF	MEGAN MACHT
FFS HENDRY CO. FOREST AREA SUP	JOE LECEA	TIME UNIT	KELLY DONALDSON (T)
		COST UNIT	LORI HISEK
<b>5. Planning Section:</b>			
CHIEF	MICHAEL J WILLIAMS		
DOCUMENTATION UNIT	BOB SOBCZAK		
DEMOBILIZATION UNIT	Laurie Oliver		
GIS SPECIALIST	MINDY WRIGHT		
TECHNOLOGY SUPPORT SPECIALIST	SCOTT BISHAW (T)		
INCIDENT METEOROLOGIST	STEVEN IPPOLITI		
RESOURCE ADVISOR	BRADY DODD		
<b>6. Logistics Section:</b>			
CHIEF	STEVE FRICK		
GROUND SUPPORT UNIT	JERRY LYNCH		
COMMUNICATIONS UNIT	RON REGAN		
MEDICAL UNIT	CODY GILMORE SHAWN CLARK		
SECURITY UNIT	BRETT WEHRLE DANNY MOSS		
<b>9. Prepared By:</b>	<b>Name:</b> MICHAEL J WILLIAMS	<b>Position/Title:</b> PLANNING SECTION CHIEF	<b>Signature:</b>
ICS 203	IAP Page	Date/Time: 04/28/2017 1800	



## Fire Weather Forecast

FORECAST NO: 27  
PREDICTION FOR: Saturday Day Shift  
SHIFT DATE: April 29, 2017  
FORECAST ISSUED: 1600 April 28, 2017

NAME OF FIRE: Cowbell Fire  
UNIT: Big Cypress National Preserve  
Incident Meteorologist: *Steven Ippoliti*  
954-826-9405

---

**DISCUSSION:** High pressure will continue to bring breezy conditions to the area. There will be slightly higher relative humidity, and slightly cooler temperatures today. The wind may become gusty in the afternoon.

### TODAY (SATURDAY DAY SHIFT):

**WEATHER:** Partly cloudy.

**WIND (20 FT):** East southeast 10 to 12 mph with gusts to 20 mph possible in the afternoon.

**MAX TEMPERATURES:** 88 to 91.

**MIN RH:** 44%.

**Chance of measurable rain:** 5%      **LAL:** 1

**DISPERSION:** 67 MAX    **MIXING HEIGHT:** 6000    **TRANSPORT WIND:** East southeast 25 mph

---

### TONIGHT (SATURDAY NIGHT):

**WEATHER:** Becoming mostly clear.

**WIND (20 FT):** Light and variable.

**MIN TEMPERATURES:** Low 70's.

**MAX RH:** 92 to 96%.    **LVORI 8 (max).**    **LAL:** 1    **Dispersion:** 2    **Chance measurable rain:** 0%.

---

### SUNDAY:

**WEATHER:** Partly Cloudy. Slight chance of late afternoon showers. 5% chance of a thunderstorm.

**WIND (20 FT):** East southeast around 10 to 12 mph.

**MAX TEMPERATURES:** 87 to 90F.

**MIN RH:** 46%.

**Chance of measurable rain:** 10%.      **LAL:** 2

**DISPERSION:** 67 MAX    **MIXING HEIGHT:** 6000    **TRANSPORT WIND:** East southeast 25 mph.

---

**GENERAL OUTLOOK MONDAY THROUGH WEDNESDAY:** Chance of showers on Monday, with an isolated thunderstorm possible as well. A cold front is forecast to approach the area Tuesday and may stall over Central Florida. This will keep a slight chance of showers and thunderstorms in the forecast through the middle of the week.

**WIND:** Monday: Southeast 10 mph    Tuesday: Variable around 5 mph    Wednesday: East southeast 10 mph

**WEATHER/TEMPERATURE:** Partly cloudy with a chance of showers Monday. Isolated thunderstorm may also be possible. Only a slight chance of showers and thunderstorms for Tuesday and Wednesday. Highs in the upper 80's to low 90's. Lows in the low 70's.

**MIN RH:** Monday: 48%    Tuesday: 42%    Wednesday: 42%

**NIGHT TIME RECOVERY:** 94% to 98% each night.



Current Incident  
area RAWS

Sunrise Saturday: 6:50 am

Sunset Saturday: 7:57 pm

Source: US Naval Observatory



Weather Matrix

## FIRE BEHAVIOR FORECAST

<b>FORECAST NUMBER: #24</b>	<b>TYPE OF FIRE: Wildland</b>
<b>FIRE NAME: Cowbell</b>	<b>OPERATIONAL PERIOD: 04/27/2017-4/29/2017</b>
<b>DATE ISSUED: 04/26/2017</b>	<b>TIME ISSUED: 1800</b>
<b>UNIT: Big Cypress Preserve</b>	<b>SIGNED: Glen Fortenberry</b>

### FUEL ASSUMPTIONS:

Primary fuels consist of grass, shrub, and pine overstory with shrub palmetto understory and timber litter. Current fuel conditions are favorable for active fire behavior within the grass and shrub fuels. Fire activity will greatly diminish in the wide cypress strands. The current drought conditions have led to both live and dead fuel moistures reaching levels of concern.

### The fuel moisture:

Calculated 1 hour fuel moistures with expected warming and drying trend for Thursday and Friday and slightly more moist air on Saturday: **4/27—5-6% 4/28-5-6% 4/29-7-8%**

**10 hr** fuel moisture estimated at 7-9% all three days

**100 hr** estimated at 10% **1000 hr** estimated at 16% for all three days

**Critical fire behavior thresholds:** 1 HR Fuel Moisture <6%, RHs below 40% and a Dispersion Index greater than 60.  
**THURSDAY AND FRIDAY, TWO OF THE THREE ARE MET (RH AND FM)**

### WEATHER SUMMARY

See attached weather forecast

**General Fire Behavior Forecast:** RH levels are dropping and the dry fuels can support very active fire behavior with  $> \frac{1}{4}$  to  $> \frac{1}{2}$  mile an hour rate of spread and 0.3 mile spotting which can greatly enhance the ROS. **Spotting is very likely with high PIG.** Head fire flame lengths in heavy fuels can exceed 20 feet.

### Specific:

**Cowbell:** Smoldering fire expected early, then creeping, backing and flanking fire expected in the interior of the fire. Continue to monitor for hot spots west of Nobles Grade road.

**MM 87:** Only smoldering early, and then creeping, backing and flanking fire as the interior island of fuel continues to burn. As winds come from the SSE, some head fire through the interior can take place.

**Initial Attack:** Spotting (4/27&4/28 PIG up to 70%—4/29 PIG up to 60%) will be a concern with new initial attacks especially in pine/palmetto stands. Expect rapid growth and high rates of spread with any initial attack. Control efforts will be difficult especially in pine/palmetto fuels.

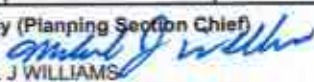
**PREDICTIONS FOR MOST ACTIVE TIME OF PEAK BURNING PERIOD USING WEATHER FROM INCIDENT IMET. HIGHER WINDS ON SATURDAY WILL COMPENSATE FOR HIGHER FM.**

Fuel Model	Fire Behavior
Grass	ROS 45-65 ch/hr, FL 5-8 ft.
Shrub	ROS 15-25 ch/hr, FL 8-11 ft
Timber Litter (Cypress)	ROS 5-7 ch/hr, FL 3-4 ft
Maximum Spotting	0.3 mile
Probability of ignition	4/27-28-70% in all models 4/29-60% in all models

**AIR OPERATIONS:** Inversion lifts early each day. No anticipated issues for air operations.

**FIRE BEHAVIOR SAFETY:** Take fire weather readings often. Fuels are conditioned and weather will supply the most changes to potential fire behavior. **Have LCES in place before taking action!!**

## Division/Group Assignment List (ICS 204 WF)

1. Incident Name:			3.			
COWBELL			Branch:		Division/Group:	
2. Operational Period: DAY					<b>A / D</b>	
Date/Time From: 04/29/2017 0800	SAT	Date/Time To: 04/29/2017 2000	SAT			
4. Operations Personnel						
OPERATIONS CHIEF		PAUL REYNOLDS 5/5		AIR OPERATIONS		MIKE MOWERY 4/29
DIVISION / GROUP SUPERVISOR		GEORGE ALLALUNIS 4/29 DOUGLAS CATES 4/30 (T)				
5. Resources Assigned this Period						
Strike Team / Task Force / Resource Designator		LWD	Leader	Number Persons	Drop Off PT./Time	Pick Up PT./Time
HEQB O-225		05/04	GARY ROSE	1	ICP/0800	ICP/2000
MASTICATOR - HENDRY GRINDING E-159		05/04	CHAD MUDGE	1	ICP/0800	ICP/2000
6. Control Operations/Work Assignments:						
<p>Task:</p> <ul style="list-style-type: none"> <li>• Patrol and mop up 25 feet. from control line</li> <li>• Monitor and patrol by air</li> <li>• Masticate access road in Sanctuary</li> </ul> <p>Purpose:</p> <ul style="list-style-type: none"> <li>• To keep fire confined and contained west of ADD 17/ADD 14 on east flank of fire</li> <li>• To protect structures and facilitate emergency evacuation.</li> <li>• To alert FHP of potential impact to I-75</li> <li>• Keep fire contained north of I-75</li> <li>• For possible contingency line</li> </ul> <p>End State:</p> <ul style="list-style-type: none"> <li>• Control fire perimeter west of ADD 17/ADD 14 to eliminate threat to Sanctuary area structures</li> <li>• Minimize risk to public traveling on I-75</li> <li>• Confine fire perimeter to reduce threats to resource values at risk.</li> </ul>						
7. Special Instructions:						
Establish and maintain LCES during operational period. Do not engage in fire suppression activities along I-75 shoulders unless traffic hazards have been mitigated. Follow the tracked vehicle requirement restrictions.						
8. Division/Group Communication Summary						
Function	Channel	RX Frequency N/W	RX Tone/NAC	TX Frequency N/W	TX Tone/NAC	Mode
COMMAND	12	166.6125		168.4000	110.9	A
COMMAND	13	168.7000		170.9750	110.9	A
TACTICAL	4	168.6000		168.6000		A
AIR TO GROUND	10	168.3250		168.3250		A
9. Prepared By (Resource Unit Leader)			Approved By (Planning Section Chief)		Date	Time
MICHAEL J WILLIAMS PSC3			MICHAEL J WILLIAMS 		04/28/2017	1800

## Division/Group Assignment List (ICS 204 WF)


<b>1. Incident Name:</b>		<b>3.</b>				
COWBELL		<b>Branch:</b>	<b>Division/Group:</b>			
<b>2. Operational Period:</b>		<b>G / K / Z</b>				
DAY						
<b>Date/Time From:</b>	<b>Date/Time To:</b>					
04/29/2017 0800 SAT	04/29/2017 2000 SAT					
<b>4. Operations Personnel</b>						
<b>OPERATIONS CHIEF</b>	PAUL REYNOLDS 5/5	<b>AIR OPERATIONS</b>	MIKE MOWERY 4/29			
<b>DIVISION / GROUP SUPERVISOR</b>	JAMES WETTSTAED 5/4 WILLIE ADAMS 5/8 (T)					
<b>5. Resources Assigned this Period</b>						
<b>Strike Team / Task Force / Resource Designator</b>	<b>LWD</b>	<b>Leader</b>	<b>Number Persons</b>	<b>Drop Off PT./Time</b>	<b>Pick Up PT./Time</b>	
HC1 CREW - T1 - FLAGSTAFF IHC C-9	05/03	ANDREW M PATTERSON	20	ICP/0800	ICP/2000	
MAVERICK BUGGY #2 E-66	05/27	BLAKE SHAW	1	ICP/0800	ICP/2000	
TRANSPORT BUGGY E-38	05/30	CLINT WEEKS	1	ICP/0800	ICP/2000	
TRANSPORT BUGGY E-39	05/30	CLINTON WEEKS	1	ICP/0800	ICP/2000	
EMPF O-250	05/05	CODY GILMORE	1	ICP/0800	ICP/2000	
SEMINOLE SUPPRESSION BUGGY E-60	04/29	MIKE LIGHTSEY	1	ICP/0800	ICP/2000	
<b>6. Control Operations/Work Assignments:</b>						
<p><b>Task:</b></p> <ul style="list-style-type: none"> <li>• Patrol and mop up 25 ft. from control line.</li> <li>• Continue monitoring and using aerial support to contain slop overs on Nobles Grades.</li> <li>• Monitor Kissimmee Billy Strand using aerial support.</li> <li>• Continue to cold trail and extinguish hot spots on Kissimmee Billy Strand.</li> </ul> <p><b>Purpose:</b></p> <ul style="list-style-type: none"> <li>• To keep fire contained east of Kissimmee Billy Strand while minimizing fire fighter exposure.</li> </ul> <p><b>End State:</b></p> <ul style="list-style-type: none"> <li>• Confine fire perimeter to reduce threats to resource values at risk.</li> </ul>						
<b>7. Special Instructions:</b>						
Utilize MIST tactics as outlined in Fire Operations Guide for BICY. Follow tracked vehicle requirement restrictions.						
<b>8. Division/Group Communication Summary</b>						
<b>Function</b>	<b>Channel</b>	<b>RX Frequency N/W</b>	<b>RX Tone/NAC</b>	<b>TX Frequency N/W</b>	<b>TX Tone/NAC</b>	<b>Mode</b>
TACTICAL	8	166.750		166.750		A
COMMAND	15	173.0375		167.3250	110.9	A
TACTICAL	5	168.2500		168.2500		A
AIR TO GROUND	10	168.3250		168.3250		A
<b>9. Prepared By (Resource Unit Leader)</b>		<b>Approved By (Planning Section Chief)</b>		<b>Date</b>	<b>Time</b>	
MICHAEL J WILLIAMS PSC3		MICHAEL J WILLIAMS		04/28/2017	1800	

## Division/Group Assignment List (ICS 204 WF)

<b>1. Incident Name:</b>			<b>3.</b>			
COWBELL			<b>Branch:</b>		<b>Division/Group:</b>	
<b>2. Operational Period:</b>			<b>INITIAL ATTACK</b>			
<b>DAY</b>						
Date/Time From: 04/29/2017 0800		SAT	Date/Time To: 04/29/2017 2000		SAT	
<b>4. Operations Personnel</b>						
<b>OPERATIONS CHIEF</b>		PAUL REYNOLDS 5/5		<b>AIR OPERATIONS</b>		
				MIKE MOWERY 4/29		
<b>DIVISION / GROUP SUPERVISOR</b>		ROBERT BERTOLINA 5/2 AARON EDWARDS 5/5 (T)				
<b>5. Resources Assigned this Period</b>						
Strike Team / Task Force / Resource Designator		LWD	Leader	Number Persons	Drop Off PT./Time	Pick Up PT./Time
TFLD O-223		04/29	NOAH DANIELS	1	ICP/0800	ICP/2000
TFLD O-106.4		04/30	DEVIN JOHNSON (T)	1	ICP/0800	ICP/2000
HCM MODULE - SUPPRESSION - BIFZ #2 O-106		04/30	SAMUEL DE LONG	8	ICP/0800	ICP/2000
ENG6 ENGINE - T6 - CO-PSF - 7-1 E-140		05/09	JOSHUA MORRIS	3	ICP/0800	ICP/2000
BICY SUPPRESSION BUGGY #3 E-65		05/11	MATT HEINZ	1	ICP/0800	ICP/2000
EMPF O-249		05/05	SHAWN CLARK	1	ICP/0800	ICP/2000
*BICY SWAMP BUGGY 2 E-64		05/31	SHAWN SHOOK	1	ICP/0800	ICP/2000
<b>6. Control Operations/Work Assignments:</b>						
<p><b>Task:</b></p> <ul style="list-style-type: none"> <li>Coordinate with BICY duty officer for notification of newly reported ignitions. Coordinate initial attack action with assigned aviation and /or ground assets</li> <li>Determine IA resource pre-positioning needs across BICY and FPWR</li> <li>Coordinate with the Liason if possibility of smoke impact to Highway 41, Highway 29 or Interstate 75.</li> </ul> <p><b>Purpose:</b></p> <ul style="list-style-type: none"> <li>Ensure timely response on any IA within BICY and FPWR</li> </ul> <p><b>End State:</b></p> <ul style="list-style-type: none"> <li>Protect human life, Minimize environment damage to protect habitat of threatened and endangered species. Minimize damage to public and private property</li> </ul>						
<b>7. Special Instructions:</b>						
<p><b>IA will be staged at the Deep Lake staging area.</b></p> <p>Follow tracked vehicle requirement restrictions. Establish and maintain LCES during operational period. Utilize MIST tactics as outlined in Fire Operations Guide for BICY. All initial attack will go through BICY Fire Dispatch Center. Incident within an Incident will go through Cowbell communications. PR Crew MOD B w/Luis Saez will be on R&amp;R 4/28 &amp; 4/29 returning fresh on 4/30.</p> <p>* Resource will be on a project for BICY but will respond if IA occurs.</p>						
<b>8. Division/Group Communication Summary</b>						
Function	Channel	RX Frequency N/W	RX Tone/NAC	TX Frequency N/W	TX Tone/NAC	Mode
BICY RPTR	1	172.4250	1035	170.1000	1035	D
BICY RPTR	2	172.4250	1035	171.6250	1035	D
PANTHER RPTR	7	164.6250	1188	163.1500	1188	D
TACTICAL	9	166.8250		166.8250		A
AIR TO GROUND	6	169.1125		169.1125		A
<b>9. Prepared By (Resource Unit Leader)</b>			<b>Approved By (Planning Section Chief)</b>		<b>Date</b>	<b>Time</b>
MICHAEL J WILLIAMS PSC3			MICHAEL J WILLIAMS		04/28/2017	1800



## Division/Group Assignment List (ICS 204 WF)

<b>1. Incident Name:</b>		<b>3.</b>				
COWBELL		<b>Branch:</b>		<b>Division/Group:</b>		
<b>2. Operational Period:</b>		<b>DAY</b>				
Date/Time From: 04/29/2017 0800		SAT		Date/Time To: 04/29/2017 2000		SAT
				MM 87 FIRE		
<b>4. Operations Personnel</b>						
<b>OPERATIONS CHIEF</b>		PAUL REYNOLDS 5/5		<b>AIR OPERATIONS</b>		MIKE MOWERY 4/29
<b>DIVISION / GROUP SUPERVISOR</b>		WILLIARD WORLEY 5/6				
<b>5. Resources Assigned this Period</b>						
Strike Team / Task Force / Resource Designator		LWD	Leader	Number Persons	Drop Off PT./Time	Pick Up PT./Time
ENG6 ENGINE - T6 - CSP 661 E-59		05/04	CHRIS CORRIGAN	2	ICP/0800	ICP/2000
ENG6 ENGINE - T6 - 31 E-7		04/29	JONATHAN O'GORMAN	2	ICP/0800	ICP/2000
ENG6 ENGINE - T6 - 658 E-157		05/04	RUSS MARSHALL	3	ICP/0800	ICP/2000
ENG3 ENGINE - T3 - CA-SHF - 51 E-99		05/05	BRIAN BUCHNER	5	ICP/0800	ICP/2000
*DUECE BUGGY IA - 607 E-89		05/01	CHRIS RICHARDS	3	ICP/0800	ICP/2000
*SLIMER SUPPRESION BUGGY E-80		05/06	JOSH MANLEY	4	ICP/0800	ICP/2000
<b>6. Control Operations/Work Assignments:</b>						
<p><b>Task:</b></p> <ul style="list-style-type: none"> <li>Patrol and conduct mop up 25 feet from control line.</li> </ul> <p><b>Purpose:</b></p> <ul style="list-style-type: none"> <li>To keep fire contained within burn unit #3.</li> </ul> <p><b>End State:</b></p> <ul style="list-style-type: none"> <li>Protect human life. Minimize environment damage to protect habitat of threatened and endangered species. Minimize damage to public and private property</li> </ul>						
<b>7. Special Instructions:</b>						
<p>Establish and maintain LCES during operational period. Utilize MIST tactics as outlined in Fire Operations Guide for BICY.</p> <p>PR Crew MOD A w/Roberto Martinez will be on R&amp;R 4/28 &amp; 4/29 returning fresh on 4/30.</p> <p>*Additional resources identified for initial attack as needed.</p>						
<b>8. Division/Group Communication Summary</b>						
Function	Channel	RX Frequency N/W	RX Tone/NAC	TX Frequency N/W	TX Tone/NAC	Mode
BICY RPTR	1	172.4250	1035	170.1000	1035	D
BICY RPTR	2	172.4250	1035	171.6250	1035	D
PANTHER RPTR	7	164.6250	1188	163.1500	1188	D
TACTICAL	9	166.8250		166.8250		A
AIR TO-GROUND	6	169.1125		169.1125		A
<b>9. Prepared By (Resource Unit Leader)</b>			<b>Approved By (Planning Section Chief)</b>		<b>Date</b>	<b>Time</b>
MICHAEL J WILLIAMS PSC3			MICHAEL J WILLIAMS 		04/28/2017	1800

<b>L. INCIDENT NAME:</b> Cowbell	<b>2. PREPARED BY:</b> Mike Mowery	<b>PREPARED DATE/TIME:</b> 04/28/2017 1600	<b>3. Sunrise:</b> 0650 <b>Sunset:</b> 1956
<b>4. REMARKS (Safety Notes, Hazards, Air Operations Special Equipment, etc.):</b> Medivac Aircraft: N16HX MTR- Located along state road 29 Fire Dispatch gets MTR activity every morning Do not over fly structures with external load missions. All aircraft should use strobes and running lights in smoky conditions. Hazards: Snags, non-incident aircraft, and winds. Contract helicopter working special use permit in North Central portion of BICY. Area identified on pilot briefing board. ATGS has air to air communications. Cease all operations at sunset			
<b>5. Squawk 1255</b> (A-20) TPR—77786 ZMA FL, Airspace 25 nm NE of Ochopee SFC 3000ft. Contact 118.825 NOTAM – 04/054 – Airspace firefighting aircraft 5nm of (9FL7) SFC 2000ft.			

6. PERSONNEL	Phone	7. FREQUENCIES			FM	8. FIXED WING	FAA#/Base
		Air/Air Rotor (A-5)	AM	Air/Air Fixed Wing (A-6)			
Air Operations—Mike Mowery	870-214-0034	123.575				Air Attack	197GB (A-18)—Aero Commander MKY
ATGS: Jay Lindgren ATGS (T): Trevor Pollock	406-461-1652 435-592-4919			168.3250 RX/TX (A) Cowbell			
Oasis Helibase (9FL7) HEB1 Mark Oetzmann HEB1(T) Jay Thatcher HMGB Mekel Hoffman N16HX	239-695-0278 208-315-5030 970-903-7922 541-410-5025			Air/Ground IA Air/Ground (A-11) Flight Following (BICY)			
Innokalee Airport HMGB—Tracy Elliott H-718	303-910-7619						
Big Cypress Fire Dispatch	239-695-9280 x 104			Air/Guard Deck	168.6250 RX/TX Tone 110.9 166.7750		

**9. HELICOPTERS (Use Additional Sheets As Necessary)**

FAA N# or Designator	TY	MAKE/MODEL	BASE	START	REMARKS	FAA N# or Designator	TY	MAKE/MODEL	BASE	START	REMARKS
718 (A-16)	1	CH-54	Immokalee	0900	Tanked	16HX (A-9)	2	Bell 205	Oasis	0900	Crew/Bucket
743PH (A-40)	3	Bell 407	Oasis	0800	Map/Recon						

TYPE/FUNCTION	NAME OF PERSONNEL OR CARGO (if applicable) OR INSTRUCTIONS FOR TACTICAL AIRCRAFT	MISSION START	FLY FROM	FLY TO
Mapping/Reconnaissance	As Requested	0930		
Water Drops	As Requested	0930		

# INCIDENT RADIO COMMUNICATIONS PLAN (ICS 205)

3. Operational Period: DAY		Date/Time From: 04/27/2017 0800		Date/Time To: 04/27/2017 2000					
Zone Group	Ch #	Function	Assignment	RX Freq	RX Tone/NAC	TX Freq	TX Tone/NAC	Mode (A, D, or M)	Remarks
	1	CARNS RPT	Initial Attack	172.4250	1035	170.1000	1035	D	Preserve RPTR
	2	OASIS RPT	Initial Attack	172.4250	1035	171.6250	1035	D	Preserve RPTR
	3	BCY LCL		166.7750	No Tone	166.7750	No Tone	A	
	4	BICY TAC 1	Division A /D	168.6000	No Tone	168.6000	No Tone	A	
	5	BICY LCL 2	MM - 87	168.2500	No Tone	168.2500	No Tone	A	
	6	A/G 59	Initial Attack	169.1125	No Tone	169.1125	No Tone	A	
	7	Panther RPT	Initial Attack	164.6250	1188	163.1500	1188	D	Panther Refuge RPTR
	8	PANTHER TAC 1	DIVISION G/Z/K	166.7500	No Tone	166.7500	No Tone	A	
	9	PANTHER TAC 2	Initial Attack	166.8250	No Tone	166.8250	No Tone	A	
	10	A/G 85	ALL DIVISIONS	168.3250	No Tone	168.3250	No Tone	A	
	11	Everglades TAC 1		166.7250	0659	166.7250	0659	D	
	12	CMD 12	DIVISION A/Z	166.6125	No Tone	168.4000	110.9	A	Command RPTR-Linked
	13	CMD 13	DIVISION D/G/Z	168.7000	No Tone	170.9750	110.9	A	Command RPTR-Linked
	14	A/G	Aerial Ignition	167.9500	No Tone	167.9500	No Tone	A	
	15	CMD 15	DIV G	173.0375	No Tone	167.3250	110.9	A	Command RPTR-Linked
	16	AIR GUARD		168.6250	No Tone	168.6250	110.9	A	

Name: RON REGAN 772-631-2585  
 Signature: /s/ Mark Spann  
 Date/Time: 04/27/2017 1200

# STATE IA RADIO COMMUNICATIONS PLAN (ICS 205)

3. Operational Period: DAY		Date/Time From: 04/27/2017 0800		Date/Time To: 04/27/2017 2000					
Zone Group	Ch #	Function	Assignment	RX Freq	RX Tone/NAC	TX Freq	TX Tone/NAC	Mode (A,D, or M)	Remarks
	1	CARNS RPT	Initial Attack	172.4250	1035	170.1000	1035	D	Preserve RPTR
	2	OASIS RPT	Initial Attack	172.4250	1035	171.6250	1035	D	Preserve RPTR
	3	BCY LCL		166.7750	No Tone	166.7750	No Tone	A	
	4	BICY TAC 1	Division A /D	168.6000	No Tone	168.6000	No Tone	A	
	5	BICY LCL 2	MM - 87	168.2500	No Tone	168.2500	No Tone	A	
	6	A/G 59	Initial Attack	169.1125	No Tone	169.1125	No Tone	A	
	7	Panther RPT	Initial Attack	164.6250	1188	163.1500	1188	D	Panther Refuge RPTR
	8	PANTHER TAC 1	DIVISION G/K/Z	166.7500	No Tone	166.7500	No Tone	A	
	9	PANTHER TAC 2	Initial Attack	166.8250	No Tone	166.8250	No Tone	A	
	10	A/G 85	ALL DIVISIONS	168.3250	No Tone	168.3250	No Tone	A	
	11	Everglades TAC 1		166.7250	0659	166.7250	0659	D	
	12	RED V22	STATE IA	154.2650	No Tone	154.2650	156.7	A	
	13	WHITE V21	STATE IA	154.2800	No Tone	154.2800	156.7	A	
	14	BLUE V23	STATE IA	154.2950	No Tone	154.2950	156.7	A	
	15	CMD 15	DIV G	173.0375	No Tone	167.3250	110.9	A	Command RPTR-Linked
	16	AIR GUARD		168.6250	No Tone	168.6250	110.9	A	

Name: RON REGAN 772-631-2585  
 Signature: /s/ RON REGAN  
 Date/Time: 04/26/2017 1800

## MEDICAL PLAN (ICS 206)

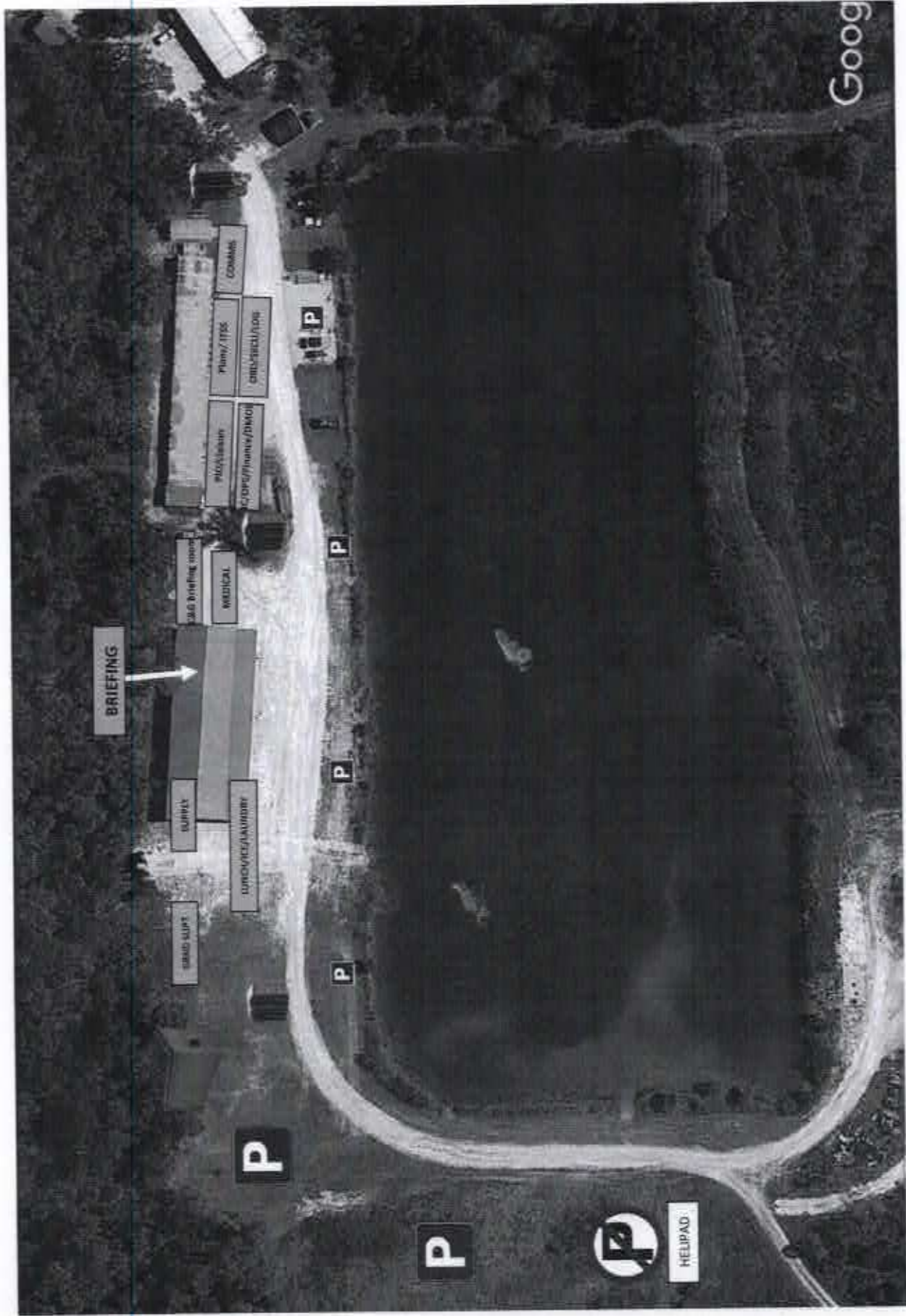
<b>1. Incident Name:</b> Cowbell Fire		<b>2. Operational Period:</b> Date: 04-29-17 Time From: 0800      Time To: 2000					
<b>3. Medical Aid Stations:</b>							
Name	Location	Contact Number(s)/Frequency	Paramedics on Site?				
Cody Gilmore (EMPF)/ Shawn Clark (EMPF)	As assigned daily	918-703-9103/918-770-5029	<input checked="" type="checkbox"/> Yes	<input type="checkbox"/> No			
<b>4. Transportation (indicate air or ground):</b>							
Ambulance Service	Location	Number(s)/Frequency	Level of Service				
Collier County EMS (ground)	Everglades City (Medic 61)	911	<input checked="" type="checkbox"/> ALS	<input type="checkbox"/> BLS			
Collier County Med-Flight (air)	Naples Airport	911	<input checked="" type="checkbox"/> ALS	<input type="checkbox"/> BLS			
6HX Bell 205 (air) medical evacuation	Oasis Heli-base	168.3250 (A/G 85)	<input type="checkbox"/> ALS	<input checked="" type="checkbox"/> BLS			
Miami Dade Fire Rescue air hoist	Miami	911	<input type="checkbox"/> ALS	<input checked="" type="checkbox"/> BLS			
<b>5. Hospitals:</b>							
Hospital Name	Address	Contact Number(s)	Travel Time		Trauma Center	Burn Center	Helipad
			Air	Ground			
Physicians Regional Collier Blvd	8300 Collier Blvd. Naples, FL 34114 Lat:26°6.313'/Long: -81°41.106'	239-354-6000 (Main) 239-354-6190 (ER)	15	50	<input type="checkbox"/> Yes Level: _____	<input type="checkbox"/> Yes <input checked="" type="checkbox"/> No	<input checked="" type="checkbox"/> Yes <input type="checkbox"/> No
Physicians Regional Pine Ridge	6101 Pine Ridge Road, Naples 34119 Lat:26°12.833'/Long: -81°43.954'	239-348-4000 (Main) 239-304-4748 (ER)	15	50	<input type="checkbox"/> Yes Level: _____	<input type="checkbox"/> Yes <input checked="" type="checkbox"/> No	<input checked="" type="checkbox"/> Yes <input type="checkbox"/> No
Naples Community Hospital	350 7 <sup>th</sup> Street North, Naples 34102 Lat:26°9.046'/Long: -81°47.907'	239-513-7709 (Main) 239-436-5151 (ER)	15	60	<input checked="" type="checkbox"/> Yes Level: 2	<input type="checkbox"/> Yes <input checked="" type="checkbox"/> No	<input checked="" type="checkbox"/> Yes <input type="checkbox"/> No
Jackson Memorial Hospital	1611 NW 12 Avenue, Miami Lat:25°47.508'/Long: -80°12.756'	305-585-1111 (Main) 305-585-6910 (ER)	20	60	<input checked="" type="checkbox"/> Yes Level: 1	<input checked="" type="checkbox"/> Yes <input type="checkbox"/> No	<input checked="" type="checkbox"/> Yes <input type="checkbox"/> No
Kendal Regional Medical Center	11750 SW 40 <sup>th</sup> St., Miami 33175 Lat:25°43.916'/Long: -80°23.148'	305-223-3000 (Main) 305-227-5544 (ER)	20	50	<input checked="" type="checkbox"/> Yes Level: 1	<input type="checkbox"/> Yes <input checked="" type="checkbox"/> No	<input checked="" type="checkbox"/> Yes <input type="checkbox"/> No
EPN Urgent Care Center	6400 Davis Boulevard Suite 103, Naples, 34104	239-775-2300 (Main)		29	No	No	No
<b>6. Special Medical Emergency Procedures:</b>							
<ul style="list-style-type: none"> <li>• Patient or nearest responder notifies Group Supervisor who will respond to the scene and become the "Incident within an incident" (IWI) commander.</li> <li>• Group Supervisor will notify nearest medical responder and ICP-Communications of the incident and "Nine Line" report attached to the back of this IAP or page 108 of the IRPG.</li> <li>• EPN Urgent Care Center is for non-life threatening medical care; can only be reached by ground transport. Hours: Mon – Sat 0800-1900; Sunday 0800-1600</li> </ul>							
<b>7. Prepared by (MEDL):</b> Matthew Moran (T)/ Shanna Ellis Signature: <i>/s/ Matthew Moran Shanna F. Ellis</i>							
<b>8. Approved by (SOF1):</b> Brian Beisel Signature: <i>/s/ Brian Beisel</i>							
ICS 206	IAP Page _____	Date/Time: 04/28/2017					

REQUEST NUMBER	RESOURCE NAME	ITEM CODE	DEMOB DATE
E-7	ENGINE - T6 - 31	ENG6	04/30/2017
E-60	ATV-SWAMP BUGGY-SEM 29	ATV	04/30/2017
E-145	CHEVY EQUINOX - KEVIN HINE	PU	04/30/2017
O-171	GASTON, ANDY	LOFR	04/30/2017
O-178	ALLALUNIS, GEORGE ANTHONY	TFLD	04/30/2017
O-179	KOHLER, M. RUTH	EDSD	04/30/2017
O-190.12	MOWERY, MICHAEL THOMAS	AOBD	04/30/2017
O-223	DANIELS, NOAH	TFLD	04/30/2017
E-143	2013 FORD F-150, PLATE G62105,	PU	05/01/2017
O-79	ALLEN, SAMUEL GLEN	FFT2	05/01/2017
O-106	MODULE - SUPPRESSION - BIFZ #2	HCM	05/01/2017
O-191	HESS, PRAWIT	RCDM	05/01/2017
O-228	O'CONNOR, WESLEY J	STOP	05/01/2017
O-35	THELEN, JENNIFER	PIO1	05/02/2017
O-69	HAMM, CYNTHIA M	PTRC	05/02/2017
O-70	PERNAS, TAMMIE	THSP	05/02/2017
O-71	LOGIUDICE, KEVIN	IADP	05/02/2017
O-74	ANGELO, MARTIN D	FFT2	05/02/2017
O-77	MATEO, MATTHEW	ENGB	05/02/2017
O-78	ASHBAUGH, SAM	ENGB	05/02/2017
O-81	CONNOLLY, NICHOLAS R	HECM	05/02/2017
O-84	WRIGHT, MINDY	FOBS	05/02/2017
O-85	HURRELL, MEGAN R	HECM	05/02/2017
O-88	SHOOK, SHAWN PATRICK	TFLD	05/02/2017
O-93	MCKNIGHT, JORDAN	DIVS	05/02/2017
O-95	SUSZEK, GREGORY	DIVS	05/02/2017
O-99	CLARK, VALERIE B	ORDM	05/02/2017
O-109	LIGHTSEY, MIKE	ATVO	05/02/2017
O-136	MURPHY, MATHEW KYLE	FFT2	05/02/2017
O-190.53	MACHT, MEGAN E	EQTR	05/02/2017
O-203	VARNEDOE, PAUL	OSC2	05/02/2017

## PHONE LIST - COWBELL FIRE

as of 4/26/2017

Position	Phone		Position	Name	Phone Number
	Number	Number			
<b>COMMAND</b>			<b>OPERATIONS</b>		
Incident Commander T3	Paul Varnedoe	423-650-2184	Ops Section Chief	Paul Reynolds	662-418-9743
Incident Commander (T)	Byron Hart	850-264-9567	Division A/D	George Allalunis	575-252-3293
Liaison Officer	Andy Gaston	706-508-2363	Division A/D (T)	Douglas Cates	541-760-5651
Liaison Officer (T)	Jeff Owenby	828-388-0401	Division G/K/Z	James Wettstaed	770-530-3950
Public Information	Michael R Williams	470-599-3926	Division G/K/Z (T)	Willie Adams	404-909-2757
Public Information (T)	Jason Nedlo	606-309-9072	Division Initial Attack	Robert Bertolina	760-914-7021
Safety Officer	Mark Helm	559-905-6554	Division Initial Attack (T)	Aaron Edwards	850-631-1608
			Division MM 87 Fire	Willard Worley	423-539-4310
<b>PLANNING</b>					
Plans Section Chief	Michael J Williams	828-835-0094			
Plans Section Chief/DMOB	Laurie Oliver	970-759-9611	<b>AIR OPERATIONS</b>		
Documentation Unit	Bob Sobczak	239-340-0200	Air Ops Branch Director (T)	Mike Mowery	870-214-0034
Meteorologist	Steven Ippoliti	954-826-9405	Oasis Helibase Manager	Mark Oetzmann	208-315-5030
Technology Support T)	Scott Bishaw	239-595-9143			
GISS	Mindy Wright	239-450-2462	<b>LOGISTICS</b>		
READ	Brady Dodd	828-620-3176	Chief	Steve Frick	218-821-6271
			Ground Support Unit Leader	Jerry Lynch	936-572-4852
<b>FINANCE</b>			Communications	Ron Regan	828-772-8514
Chief	Megan Macht	970-749-9734	Ordering Manager	Tammie Pernas	305-915-5060
Time Unit Leader	Kelly Donaldson	580-236-9339	Base Camp Manager	Kyler McCarrel	970-261-8046
Procurement	Leslie Solberg	360-553-9830	Medical Unit Leader	Shawn Clark	918-770-5029
			Medical Unit Leader	Cody Gilmore	918-703-9103
			RADO/EDRC	Mira Peters	335-271-8908
			Security Unit	Brett Wehrley	318-305-0640
Big Cypress National Preserve	Duty Officer	239-719-0241			



COWBELL FIRE ICP



81°30'W

81°20'W

81°10'W

81°0'W

80°50'W

26°30'N  
26°20'N  
26°10'N  
26°0'N  
25°50'N  
25°40'N

↑  
Immokalee

# Cowbell Fire Vicinity Map

U.S. Department of the Interior  
Big Cypress National Preserve  
33100 Tamiami Trail East  
Ostlopes, FL 34141



North American Datum 1983  
Map Created 4/28/2017

No warranty is made by the National Park Service (NPS) as to the accuracy, reliability, or completeness of this data for individual use or aggregate use with other data, or for purposes not intended by NPS.



MM87 Fire

← Naples  
26 Miles

Tru 4 Fire

→ Ft. Lauderdale  
48 Miles

↓  
Everglades  
City

Hotline Fire

Pathjament Fire

Oasis  
Visitor  
Center

GULF OF MEXICO

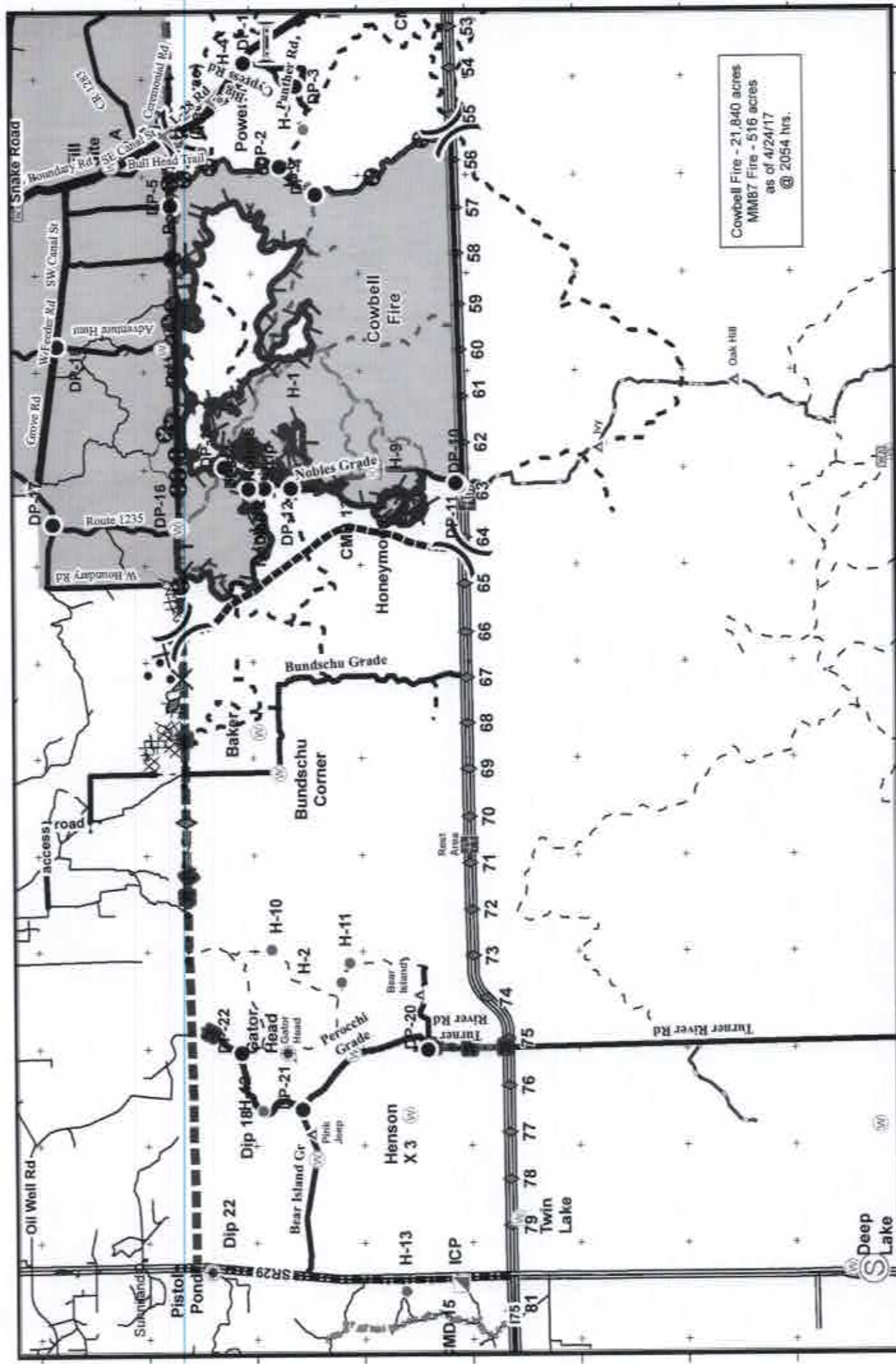
81°30'W

81°20'W

81°10'W

81°0'W

80°50'W



Cowbell Fire - 21,840 acres  
 MMB7 Fire - 516 acres  
 as of 4/24/17  
 @ 2054 hrs.



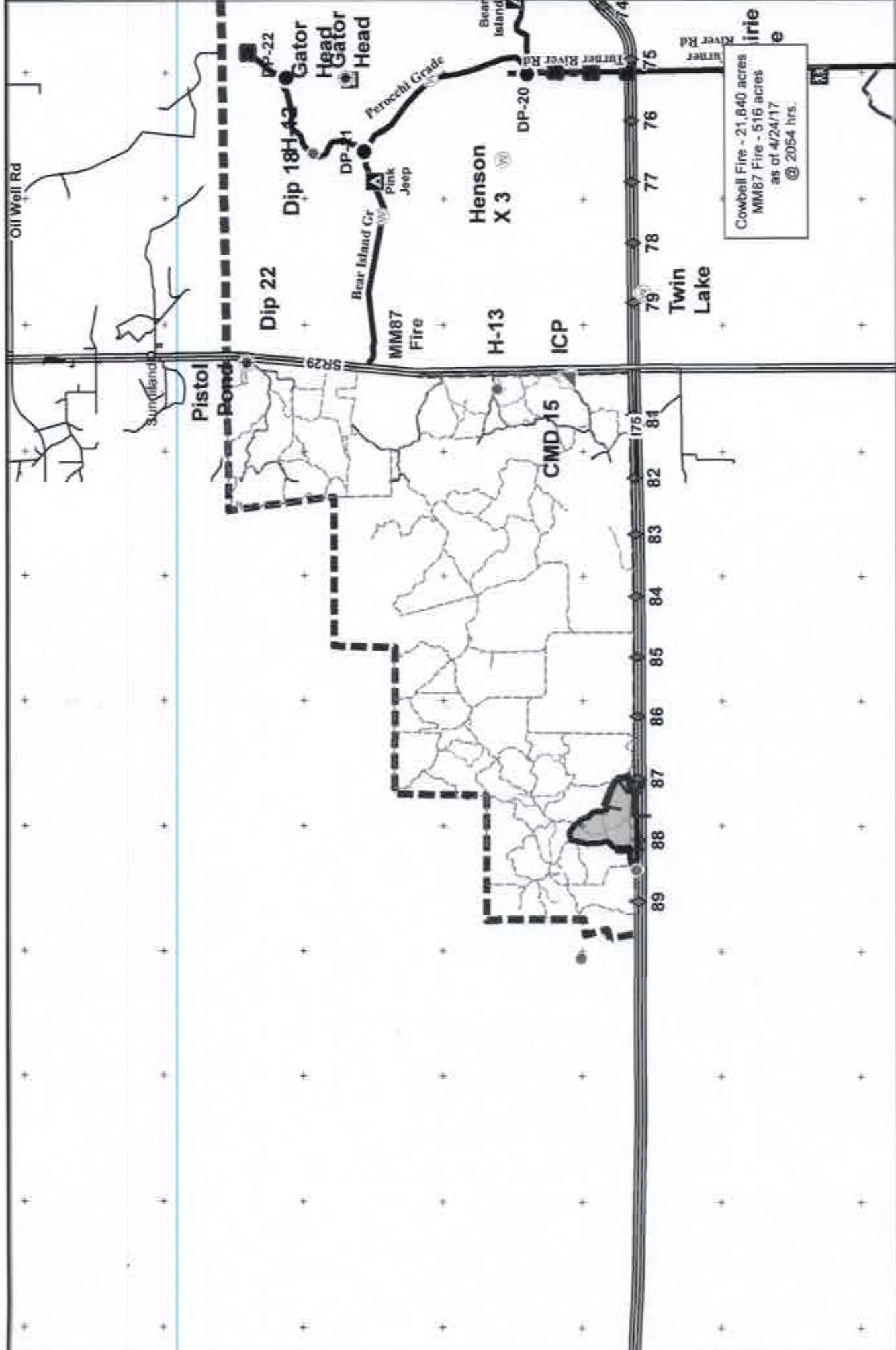
0 0.5 1 2 3  
 Mile  
 NAD 83 UTM 17

- Rain Gauge
- Uncontrolled Fire Edge
- Completed Line
- M - M Mastication Line
- Completed Disk Line
- Proposed Line
- Incident Command Post
- Repeater
- Aerial Helioad
- Private Structures
- IPS Property
- Helibase
- Bridge Locations
- 1 - 75
- Improved Road
- Primary Buggy Trail
- Drop Point
- Helispot
- Division
- Mobile Weather

**Cowbell Fire**  
 FL-BCP-017033

**IAP Map**  
 3 Day IAP  
 Cowbell





**Cowbell Fire**  
FL-BCP-017033

**IAP Map**  
3 Day IAP  
MM87

**Team Titanium**

- Oil Well Rd
- SR 29
- Percecht Grade
- Bear Island Cr
- Third River Rd
- Turner Rd
- Oil Well Rd
- Water Only Fire Perimeter
- City
- Carriageway
- Other
- Trailhead
- MAV Special Use Roads
- Highlighted The Edge
- Contoured Line
- Proposed Maplines Line
- SWW Boards
- Road
- Oil Well Rd
- Water Only Fire Perimeter
- City
- Carriageway
- Other
- Trailhead
- MAV Special Use Roads
- Highlighted The Edge
- Contoured Line
- Proposed Maplines Line
- SWW Boards
- Road
- Oil Well Rd
- Water Only Fire Perimeter
- City
- Carriageway
- Other
- Trailhead
- MAV Special Use Roads
- Highlighted The Edge
- Contoured Line
- Proposed Maplines Line
- SWW Boards
- Road

Cowbell Fire - 21,840 acres  
MM87 Fire - 516 acres  
as of 4/24/17  
@ 2054 hrs.

### Medical Incident Report- "9 Line"

**FOR ALL MEDICAL EMERGENCIES: IDENTIFY ON SCENE INCIDENT COMMANDER BY NAME AND POSITION AND ANNOUNCE "MEDICAL EMERGENCY" TO INITIATE RESPONSE FROM IMT COMMUNICATIONS/DISPATCH.**

**Use items one through nine to communicate situation to communications/dispatch.**

**1. CONTACT COMMUNICATIONS-**

*Ex: "Cowbell Communications, Div. Alpha. Stand-by for Priority Medical Incident Report." (If life threatening request designated frequency be cleared for emergency traffic.)*

**2. INCIDENT STATUS:** Provide incident summary and command structure.

<b>Nature of Injury/Illness</b>		Describe the injury <i>(Ex: Broken leg with bleeding)</i>
Incident Name		Geographic Name + "Medical" <i>(Ex: Trout Meadow Medical)</i>
Incident Commander		Name of IC
Patient Care		Name of Care Provider <i>(Ex: EMT Smith)</i>

**3. INITIAL PATIENT ASSESSMENT:** Complete this section for each patient. This is only a brief, initial assessment. Provide additional patient info after completing this 9 Line Report.

Number of Patients	Male / Female	Age:	Weight:
Conscious? <input type="checkbox"/> YES <input type="checkbox"/> <b>NO = MEDEVAC!</b>			
Breathing? <input type="checkbox"/> YES <input type="checkbox"/> <b>NO = MEDEVAC!</b>			
Mechanism of Injury: What caused the injury?			
Lat/Long (Datum NAD83)			

**4. SEVERITY OF EMERGENCY, TRANSPORT PRIORITY**

SEVERITY	TRANSPORT PRIORITY
<input type="checkbox"/> <b>URGENT-RED</b> Life threatening injury or illness. <i>Ex: Unconscious, difficulty breathing, bleeding severely, 2<sup>nd</sup> - 3<sup>rd</sup> burns more than 4 palm sizes, heat stroke, disoriented.</i>	Ambulance or MEDEVAC helicopter. Evacuation need is <b>IMMEDIATE.</b>
<input type="checkbox"/> <b>PRIORITY-YELLOW</b> Serious injury or illness. <i>Ex: Significant trauma, not able to walk, 2<sup>nd</sup> - 3<sup>rd</sup> burns not more than 1-2 palm sizes.</i>	Ambulance or consider air transport if at remote location. Evacuation may be <b>DELAYED.</b>
<input type="checkbox"/> <b>ROUTINE-GREEN</b> Not a life threatening injury or illness. <i>Ex: Sprains, strains, minor heat-related illness.</i>	Non-Emergency. Evacuation considered <b>Routine of Convenience.</b>

**5. TRANSPORT PLAN:**

**Air Transport:** (Agency Aircraft Preferred)

<input type="checkbox"/> Helispot	<input type="checkbox"/> Short-haul/Hoist	<input type="checkbox"/> Life Flight	<input type="checkbox"/> Other
-----------------------------------	---	--------------------------------------	--------------------------------

**Ground Transport:**

<input type="checkbox"/> Self-Extract	<input type="checkbox"/> Carry-Out	<input type="checkbox"/> Ambulance	<input type="checkbox"/> Other
---------------------------------------	------------------------------------	------------------------------------	--------------------------------

**6. ADDITIONAL RESOURCE/EQUIPMENT NEEDS:**

<input type="checkbox"/> Paramedic/EMT(s)	<input type="checkbox"/> Crew(s)	<input type="checkbox"/> SKED/Backboard/C-Collar
<input type="checkbox"/> Burn Sheet(s)	<input type="checkbox"/> Oxygen	<input type="checkbox"/> Trauma Bag
<input type="checkbox"/> Medication(s)	<input type="checkbox"/> IV/Fluid(s)	<input type="checkbox"/> Cardiac Monitor/AED
<input type="checkbox"/> Other (i.e. splints, rope rescue, wheeled litter)		

**7. COMMUNICATIONS:**

Function	Channel Name/Number	Receive (Rx)	Tone/NAC *	Transmit (Tx)	Tone/NAC *
COMMAND	CARNS Rpt Channel 1	172.4250	1035	170.1000	1035
COMMAND	OASIS Rpt Channel 2	172.4250	1035	171.6250	1035
COMMAND	CMD Channel 12	166.8125	No Tone	168.4000	110.9
AIR-TO-GRND	AG/85 Channel 10	168.3250	No Tone	168.3250	No Tone
TACTICAL					

\*(NAC for digital radio system)

**8. EVACUATION LOCATION:**

Lat/Long (Datum NAD83) <i>EX: N 40 42.45' x W 123 03.24'</i>	
Patient's ETA to Evacuation Location:	
Helispot/Extraction Size and Hazards:	

**9. CONTINGENCY:**

<b>Considerations:</b> If primary options fail, what actions can be implemented in conjunction with primary evacuation method? Be thinking ahead...	<b>REMEMBER:</b> Confirm ETA's of resources ordered. Act according to your level of training. Be Alert. Keep Calm. Think Clearly. Act Decisively.
---	---



