



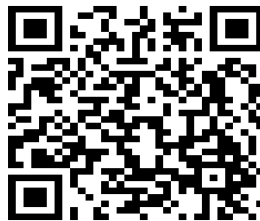
# Incident Action Plan

Day Operational Period  
Wednesday  
4/19/17  
0800-2000

## Cowbell Fire

21,156 acres  
55% contained

FL-BCP-017033  
PPKX14 (1502)  
PFFSKX14017001  
FFF2000000KX140



QR CODE  
INCIDENT MAP

INCIDENT OBJECTIVES	1. Incident Name  <b>Cowbell Fire</b>	2. Date Prepared <b>4/18/17</b>	3. Time Prepared <b>1200</b>
4. Operational Period <b>4/19/17 0800 - 2000</b>			
5. General Control Objectives For The Incident <u>Objectives for the Incident:</u> <ul style="list-style-type: none"> <li>• Protection of human life is top priority through the use of sound risk management decisions that are commensurate with values at risk.</li> <li>• Protect private property and infrastructure, federal facilities, critical transportation corridors, recreational and cultural resource values, T&amp;E species and their habitat (e.g. Florida Panther, Florida bonneted bat, Red-Cockaded Woodpecker), and wilderness values through coordination with READS and following MIST Tactics on initial and extended attack fires.</li> <li>• Provide opportunities to communicate and educate the public on the role of fire in the BCP and FPR ecosystems through social media and other outlets.</li> <li>• Provide training opportunities for Preserve, State, and local federal fire agency personnel to actively enhance successional planning of future firefighting personnel.</li> <li>• Sustain and enhance relationships with the people we serve.</li> </ul>			
<u>Control Objectives:</u> <ul style="list-style-type: none"> <li>• Utilize confine, contain, and point source protection strategies and tactics that commit responders only to operations where and when they can be successful.</li> <li>• In order to minimize impacts to high values including Seminole and Miccosukee tribal lands, Sanctuary community, and private land within and near to the boundaries of the Big Cypress National Preserve and Florida Panther Wildlife Refuge keep fire: <ul style="list-style-type: none"> <li>○ West of Add 14 and Add 17 on the eastern side</li> <li>○ South of the Preserve boundary on the northern side</li> <li>○ North of Interstate 75 on the south side</li> <li>○ East of State Highway 29 on the west side</li> </ul> </li> <li>• Provide initial attack for Big Cypress National Preserve and Florida Panther Refuge in coordination with local resources.</li> <li>• Minimize smoke impacts on I-75, State Road 29 and US Highway 41 in order to avoid safety threats to the public.</li> </ul>			
6. Weather forecast for Period  See attached weather forecast.			
7. General Safety Message  Look up, look down, look all around for hazards, recognize them and mitigate them.			
8. ATTACHMENTS (X IF ATTACHED) <input checked="" type="checkbox"/> Organization List - ICS 203 <input checked="" type="checkbox"/> Medical Plan - ICS 206                      [   ] _____ <input checked="" type="checkbox"/> Division Assignment Lists - ICS 204 <input checked="" type="checkbox"/> Air Ops – ICS 220                      [   ] _____ <input checked="" type="checkbox"/> Communications Plan - ICS 205 <input checked="" type="checkbox"/> Incident Map                      [   ] _____			
9. Prepared By (Planning Section Chief)  <b>Terry Pierce</b>		10. Approved By (Incident Commander)  <b>Mike Wilkins</b>	

ORGANIZATION ASSIGNMENT LIST		9.	Operations Section	
1. Incident Name <b>COWBELL FIRE</b>		Ops Section Chief		Paul Reynolds
		Strategic Operations		Jim Durrwachter
		Ops Section Deputy		Dwight Snow
		Planning Ops		Michael Heard
2. Date 04/18/17	3. Time 1700hrs			
4. Operational Period 04/19/17 DAY (0800 – 2000)		<b>a. Divisions / Groups</b>		
		Division	A/D	Kerry Clark
5.	<b>Incident Commander and Staff</b>	Division	G	Victor Doig
Incident Commander	Mike Wilkins, Andy Baker (t)	Division	K	Tim Nutley
		Division	Z	Mike Johnson
Deputy Incident Commander	Mark Morales	Division	Initial Attack	Kris Wilson
Liaison Officer	Andy Gaston	Group	Strucutre Protection	Shawn Nagle
Safety Officer	Brian Beisel	Divsion	Parliament and Misc Fires	Unstaffed
Information Officer	Terry Krasko, Michael R Williams			
6.	<b>Agency Reps</b>			
Agency Administrator	Tammy Whittington (Big Cypress)			
Agency Administrator	J.D. Lee (Big Cypress)			
Chief of Fire & Aviation	Jordan McKnight (Big Cypress)			
AFMO	Byron Hart (BICY/Panther)			
Zone FMO	Cass Palmer (Panther)			
Collier Co. Sheriff	Lt. Jake Walker	<b>b. Air Operations Branch</b>		
Seminole Tribe of Florida	Matt Flying/Grant Steelman	Air Operations Branch Director		John Bragg
Florida Highway Patrol	Lt. Joseph Bowers	Air Operations Branch Director (t)		Mike Mowry
Greater Naples Fire Rescue	J. Nolan Sapp	Air Support Group Supervisor		Matt Clinton
FFS Collier Co Forest Area Sup	Tony Curella	Air Tactical Group Supervisor		Steve Little
FFS Hendry Co Forest Area Sup	Joe Lecea	Oasis Helibase Manger		Mark Oetzmann
7.	<b>Planning Section</b>			
Chief	Terry Pierce/ Dave Dobbs			
Resources Unit	Sue Wilder, Steve Wells			
Situation Unit	Michael J Williams			
FBAN	Glenn Fortenberry	8.	<b>Logistics Section</b>	
Air Resource Advisor	Andrea Holland	Chief		Cindy Schiffer, Bill Lisowsky, Terry Holsclaw (t)
READ	JoAnne Young	Supply Unit		Bill Kitchings, Sandy Rhodes (t)
IMET	Steven Ippoliti	Facilities Unit		Jared Baker (t), Jamie Jones (t), Susan Cornett
GISS	Alan Smith, Katy McClurdy	Ground Support		Joe Emberson, Randy Chapin
Demob Unit	Henry Hickerson	Ordering Manager		Natalie Broce, Tammie Pernas(t)
Status Check-In	Teresa Moss, Allison Cochran (t)	Communications Unit		Mark Spann
Training	Debra Burgos/ Mary Leathers (t)	Medical Unit Leader		Shanna Ellis, Matt Moran (t)
ITSS	Dan Leduc/Scott Grest	Security Manager		David Clark, RJ Seehase (t)
Documentation	Bob Sobczak (t)	Receiving and Distributioin Mgr		Prawit Hess
10.	<b>Finance Section</b>			
Chief	Randee Olsen			
Time Unit	Sandra Fix			
Cost Unit	Susan Deimel			
Comp/Claims	Donna Rogers			
Procurement	Leslie Solberg			
Personnel Time Recorder	Pedra Setlich, Kelly Donaldson			



# Fire Weather Forecast

FORECAST NO: 17 NAME OF FIRE: Cowbell Fire  
 PREDICTION FOR: Wednesday Day Shift UNIT: Big Cypress National Preserve  
 SHIFT DATE: April 19, 2017 Incident Meteorologist: *Steven Ippoliti*  
 FORECAST ISSUED: 1900 April 18, 2017 954-826-9405

---

**DISCUSSION:** High pressure, to the northeast, will keep the general wind out of the east. The west coast sea breeze will develop, if skies clear, but is not forecast to make it to the burn area. However, it could cause a few showers to pop up in the area, and cause the wind to become more variable. By late Thursday dry air begins to return to the area.

**TODAY (WEDNESDAY DAY SHIFT):**

**WEATHER:** Partly cloudy, becoming mostly cloudy in the afternoon. A few showers possible in the afternoon.  
**WIND (20 FT):** Light & variable becoming east at 8 to 12 mph in the late morning.  
**MAX TEMPERATURES:** 84 to 87.  
**MIN RH:** 49%.  
 Chance measurable rain: 30% LAL: 1  
**DISPERSION:** 62 MAX **MIXING HEIGHT:** 5200 **TRANSPORT WIND:** East southeast 10 to 15 mph.

---

**TONIGHT (WEDNESDAY NIGHT):**

**WEATHER:** Partly cloudy. Showers, mainly in the evening. Slight chance of patchy fog in the early morning.  
**WIND (20 FT):** Variable 8 mph in the evening. Calm to light and variable. Northerly drainage flow possible.  
**MIN TEMPERATURES:** 61 to 65F.  
**MAX RH:** 98 to 100%. LVORI 9 (max). LAL: 1 LDSI: 2 Chance measurable rain: 15%.

---

**THURSDAY:**

**WEATHER:** Partly cloudy. A few showers possible.  
**WIND (20 FT):** Light & variable becoming east at 8 to 12 mph.  
**MAX TEMPERATURES:** 83 to 86F.  
**MIN RH:** 47%.  
 Chance measurable rain 20%. LAL: 1  
**DISPERSION:** 55 MAX **MIXING HEIGHT:** 5500 **TRANSPORT WIND:** East Southeast 15 to 20 mph.

---

**GENERAL OUTLOOK FRIDAY THROUGH SUNDAY:** A drier air mass will move into the area for Friday and Saturday, with RH values possibly dropping into the 30%*s*. Saturday, high pressure to the east will move south, causing the wind to turn more southeasterly. A cold front will begin to approach the area on Sunday, which will turn the wind to the south, with moisture moving back into the area, as well as a chance for showers. Sunday night may see fog development.

**WIND:** Friday: East 8 to 12 mph. Saturday: Southeast 8 to 12 mph. Sunday: South 8 to 12 mph in the morning, becoming southwest in the afternoon.

**WEATHER/TEMPERATURE:** Dry Friday & Saturday. Showers possible on Sunday. Highs in the mid 80's. Lows in the low 60's.

**MIN RH:** Friday: 37% Saturday: 37% Sunday: 53%

**NIGHT TIME RECOVERY:** 95% to 100% each night.



Current Incident  
 area RAWs  
 conditions

Sunrise Tuesday: 6:58 am  
 Sunset Tuesday: 7:52 pm

Source: US Naval Observatory

## FIRE BEHAVIOR FORECAST

**FORECAST NUMBER: #16**

**TYPE OF FIRE: Wildland**

**FIRENAME: Cowbell**

**OPERATIONAL PERIOD: 04/19/2017**

**DATE ISSUED: 04/18/2017**

**TIME ISSUED: 1800**

**UNIT: Big Cypress Preserve**

**SIGNED: *Glen Fortenberry***

### FUEL ASSUMPTIONS:

Primary fuels consist of grass, shrub, pine overstory with shrub palmetto understory and timber litter. Current fuel conditions are favorable for very active fire behavior within the grass and shrub fuels. Fire activity will greatly diminish in the wide cypress strands. The current drought conditions have led to both live and dead fuel moistures to reach levels of concern. Expect all fuels to burn readily, including those that appear green.

### The fuel moisture for today is:

Calculated 1 hr fuel 8%, 10 hr fuel 10%, 100 hr fuel 15%, 1000 hr fuel 16%

**Critical fire behavior thresholds:** 1 HR Fuel Moisture <6%, RHs below 40% and a Dispersion Index greater than 60.

**DISPERSION INDEX is 62 for today**

**WEATHER:** Partly cloudy, becoming mostly cloudy in the afternoon. A few showers possible in the afternoon

**WIND (20 FT):** Light & variable becoming east at 8 to 12 mph in the late morning

**MAX TEMPERATURES:** 84 to 87.

**MIN RH:** 49%.

**LAL:** 1      Chance measurable rain: 30%

**DISPERSION:** 62 **MAX MIXING HEIGHT:** 5200 **TRANSPORT WINDS:** East southeast 10-15 mph in afternoon.

### General Fire Behavior Forecast:

Expect smoldering and creeping fire in any area that receives rainfall. Fuels are still drought stricken and support high intensity fire behavior with ¼ + mile rate of spread and ¼+ mile spotting in the pine/ palmetto in areas not receiving rain.

### Specific:

**Cowbell:** The fire will move through available fuels with backing, flanking and head fires as impacted by wind direction. If the fire gets established and produces a column it will continue to run until it reaches an unburnable fuel.(ex cypress strand). Continue to watch for reburn potential especially in pine stands that burned at least 7 or more days prior to today.

**Initial Attack:** Due to fuel conditions, high resistance to suppression efforts can be expected in all fuel types. Expect rapid rates of spread, with high intensities in pine/palmetto fuel type and anticipate spotting to challenge your control efforts. Heavy resistance can be expected on any new starts in all fuel types



### **PREDICTIONS FOR MOST ACTIVE TIME OF PEAK BURNING PERIOD USING WEATHER FROM INCIDENT IMET**

<b>Fuel Model</b>	<b>Fire Behavior</b>
Grass	ROS 20 to 40 ch/hr, FL 4-7 ft.
Shrub	ROS 10 to 20 ch/hr, FL 6-9 ft
Timber Litter (Cypress)	ROS 2 to 5 ch/hr, FL 2-3 ft
Spotting	. 25miles
Probability of Ignition	40% in all models

**AIR OPERATIONS:** No impacts anticipated for air ops. The inversion lifts by 0900.

**FIRE BEHAVIOR SAFETY:** Don't let your guard down. Fuels conditions are such that fire behavior can change quickly. Changes in wind direction and or fuel type will cause a change in fire behavior and spread direction. Maintain good situational awareness.

**HEALTH AND SAFETY MESSAGE**  
*If you SEE something...SAY something*

<b>INCIDENT:</b> Cowbell Fire	<b>DATE:</b> 04/19/2017 <b>TIME:</b> Day Shift
<b>Major Hazards and Risks:</b> <ul style="list-style-type: none"><li>➤ SITUATIONAL AWARENESS</li><li>➤ FATIGUE</li><li>➤ DRIVING &amp; TRAFFIC</li><li>➤ HYDRATION</li><li>➤ RISK MANAGEMENT</li></ul>	
<p>The fire is quieter now but one of the common denominators of tragedy fires is “...deceptively quiet areas of large fires”. Weather conditions are becoming a little more active. Keep situational awareness in place throughout the entire operational period as your location changes.</p> <p>Fatigue starts to affect an individual after only a few days. Follow the work/rest guidelines and mitigate longer shifts as soon as possible.</p> <p>We are driving a lot of miles on major highways. Non-fire traffic won't pay sufficient attention to us so drive defensively at all times.</p> <p>Pace yourself, drink plenty of fluids and be able to recognize the signs/symptoms of heat related injuries. Drink 4 times the amount of water to Gatorade type drinks.</p> <p>Practice intentional risk management: assess hazards, identify consequences and the risk of occurrence, develop and implement controls....review your IRPG, Green Section, Page 1.</p>	
 <p>11. UNBURNED FUEL BETWEEN YOU AND THE FIRE</p>	 <p>Handout 2 - Risk Management Workshop</p>

## Division/Group Assignment List (ICS 204 WF)

<b>1. Incident Name:</b>			<b>3.</b>			
Cowbell Fire			<b>Branch:</b>		<b>Division/Group</b>	
<b>2. Operational Period:</b>			<b>A/D</b>			
Date/Time From: 04/19/17 0800	Date/Time To: 04/19/17 2000					
<b>4. Operations Personnel</b>						
AIR ATTACK SUPERVISOR	Kerry Clark		OPERATIONS		Paul Reynolds	
			STRATEGIC OPERATIONS		Jim Durrwachter	
			DEPUTY OPERATIONS		Dwight Snow	
DIVISION/GROUP SUPERVISOR			PLANNING OPERATIONS		Michael Heard	
<b>5. Resources Assigned this Period</b>						
Strike Team / Task Force / Resource Designator	LWD	Leader	Number Persons	Drop Off PT./Time	Pick Up PT./Time	
MOD BIFZ #2	O-106	5/1 Sam Delong	8	ICP/0800	ICP/2000	
EMTF	O-196	5/1 Brandon Little	1	ICP/0800	ICP/2000	
EMTP	O-36	4/25 Frank Abel	1	ICP/0800	ICP/2000	
<b>6. Control Operations/Work Assignments:</b>						
<b>Task:</b>						
<ul style="list-style-type: none"> <li>Patrol and mop up 25 ft. from control line</li> <li>Monitor and patrol by air</li> </ul>						
<b>Purpose:</b>						
<ul style="list-style-type: none"> <li>To keep fire confined and contained west of ADD 17/ADD 14 on east flank of fire</li> <li>To protect structures</li> <li>To alert FHP of potential impact to I-75</li> <li>Keep fire contained north of I-75</li> </ul>						
<b>End State:</b>						
<ul style="list-style-type: none"> <li>Control fire perimeter west of ADD 17/ADD 14 to eliminate threat to Sanctuary area structures</li> <li>Minimize risk to public traveling on I-75</li> <li>Confine fire perimeter to reduce threats to resource values at risk</li> </ul>						
<b>7. Special Instructions:</b> Establish and maintain LCES during operational period. Do not engage in fire suppression activities along I-75 shoulders unless traffic hazards have been mitigated						
<b>8. Division/Group Communication Summary</b>						
Function	Channel	RX Frequency N/W	RXTone/NAC	TX Frequency N/W	TX Tone/NAC	Mode
COMMAND	12	166.6125		168.4000	110.9	A
COMMAND	13	168.7000		170.9750	110.9	A
TACTICAL	4	168.6000		168.6000		A
AIR TO GROUND	10	168.3250		168.3250		A
<b>9. Prepared By (Resource Unit Leader)</b>			<b>Approved By (Planning Section Chief)</b>		<b>Date</b>	<b>Time</b>
/s/Sue Wilder/Steve Wells			Terry Pierce		04/18/17	16:00

## Division/Group Assignment List (ICS 204 WF)

<b>1. Incident Name:</b>			<b>3.</b>			
Cowbell Fire			<b>Branch:</b>		<b>Division/Group</b>	
<b>2. Operational Period:</b>					<b>G</b>	
Date/Time From: 04/19/17 0800	Date/Time To: 04/19/17 2000					
<b>4. Operations Personnel</b>						
AIR ATTACK SUPERVISOR			OPERATIONS		Paul Reynolds	
			STATEGIC OPERATIONS		Jim Durrwachter	
			DEPUTY OPERATIONS		Dwight Snow	
DIVISION/GROUP SUPERVISOR	Victor Doig		PLANNING OPERATIONS		Michael Heard	
<b>5. Resources Assigned this Period</b>						
Strike Team / Task Force / Resource Designator	LWD	Leader		Number Persons	Drop Off PT./Time	Pick Up PT./Time
TFLD O-172	4/30	Allan Kirby		1	ICP/0800	ICP/2000
TFLD (t) O-173	4/30	Jared Nobles		1	ICP/0800	ICP/2000
TFLD O-178	4/30	George Allalunis		1	ICP/0800	ICP/2000
ENG 6 Firetrax E-86	4/19	Carlos Gutierrez		3	ICP/0800	ICP/2000
ENG 6 Wildlands Fire Service E-87	4/19	Brian Terry		3	ICP/0800	ICP/2000
ENG6 Wildlands Fire Service E-121	4/25	David Hogrefe		3	ICP/0800	ICP/2000
Slimmer Suppression Buggy E-80 (OS 4/19)	4/25	Matt Mateo		3	ICP/0800	ICP/2000
BICY Suppression Buggy #3 E-65	4/25	Josh Manley		1	ICP/0800	ICP/2000
Duece Buggy IA #607 E-89	4/23	JT Sohr		2	ICP/0800	ICP/2000
Masticator E-6	4/30	Carlos DelCruze		1	ICP/0800	ICP/2000
Masticator GEO-BOY E-83	4/24	Rob Shackelford		1	ICP/0800	ICP/2000
HEQB O-201	5/2	David Poole		1	ICP/0800	ICP/2000
HEQB O-124	4/24	Jesse Barr		1	ICP/0800	ICP/2000
SOFR O-63	4/19	David Dallison		1	ICP/0800	ICP/2000
SOFR O-193	5/2	Robert Bertolina		1	ICP/0800	ICP/2000
READ	4/25	Jo Anne Young		1	ICP/0800	ICP/2000
EMTF O-17	4/22	Jim Stout		1	ICP/0800	ICP/2000
EMTF O-198	5/1	Adam White		1	ICP/0800	ICP/2000
<b>6. Control Operations/Work Assignments:</b>						
<b>Task:</b>						
<ul style="list-style-type: none"> <li>Patrol and mop up 25 ft. from control line</li> <li>Masticate contingency line and alternate contingency line</li> <li>Continue monitoring and using aerial support to contain slop overs on Nobles Grades</li> <li>Monitor Kissimmee Billy Strand using aerial support</li> </ul>						
<b>Purpose:</b>						
<ul style="list-style-type: none"> <li>To keep fire contained east of Kissimmee Billy Strand. To establish a contingency line and alternate line</li> </ul>						
<b>End State:</b>						
<ul style="list-style-type: none"> <li>Confine fire perimeter to reduce threats to resource values at risk</li> </ul>						
<b>7. Special Instructions:</b> Establish and maintain LCES during operational period. Coordinate with Field OPS in the event swing shift resources are required. Utilize MIST tactics as outlined in Fire Operations Guide for BICY. Follow tracked vehicle requirement restrictions.						
<b>8. Division/Group Communication Summary</b>						
Function	Channel	RX Frequency N/W	RXTone/NAC	TX Frequency N/W	TX Tone/NAC	Mode
COMMAND	13	168.7000		170.9750	110.9	A
COMMAND	15	173.0375		167.3250	110.9	A
TACTICAL	5	168.2500		168.2500		A
AIR TO GROUND	10	168.3250		168.3250		A
<b>9. Prepared By (Resource Unit Leader)</b>			<b>Approved By (Planning Section Chief)</b>			<b>Date</b>
/s/Sue Wilder/Steve Wells			Terry Pierce			04/18/17
						<b>Time</b>
						16:00



## Division/Group Assignment List (ICS 204 WF)

<b>1. Incident Name:</b>			<b>3.</b>				
Cowbell Fire			<b>Branch:</b>		<b>Division/Group</b>		
<b>2. Operational Period:</b>					<b>Z</b>		
Date/Time From: 04/19/17 0800	Date/Time To: 04/19/17 2000						
<b>4. Operations Personnel</b>							
AIR ATTACK SUPERVISOR			OPERATIONS		Paul Reynolds		
			STRATEGIC OPERATIONS		Jim Durrwachter		
			DEPUTY OPERATIONS		Dwight Snow		
DIVISION/GROUP SUPERVISOR	Mike Johnson		PLANNING OPERATIONS		Michael Heard		
<b>5. Resources Assigned this Period</b>							
Strike Team / Task Force / Resource Designator		LWD	Leader		Number Persons	Drop Off PT./Time	Pick Up PT./Time
TFLD	O-61	4/19	Mario Marquez		1	ICP/0800	ICP/2000
MOD Buffalo	O-21	4/23	Josh Hampton		5	ICP/0800	ICP/2000
ENG3 #51	E-99	4/23	Mike Anderson		5	ICP/0800	ICP/2000
ENG3 #321	E-98	4/23	Kenneth Vaughn		5	ICP/0800	ICP/2000
ENG3 #335	E-100	4/30	Bryan Reddish		5	ICP/0800	ICP/2000
Seminole Suppression Buggy	E-60	4/30	Mike Lightsey		2	ICP/0800	ICP/2000
Seminole Suppression Buggy	E-139	4/26	Orlando Cleveland		1	ICP/0800	ICP/2000
Transport Buggy	E-38	4/25	Clint Weeks		1	ICP/0800	ICP/2000
Transport Buggy	E-39	4/25	Captain Steve-Clinton Weeks		1	ICP/0800	ICP/2000
Transport Buggy	E-40	4/25	Bobby Weeks		1	ICP/0800	ICP/2000
Transport Buggy	E-41	4/25	Victor Robinson		1	ICP/0800	ICP/2000
SOFR	O-89	4/19	John Foley		1	ICP/0800	ICP/2000
READ	O-154	4/25	JoAnne Young		1	ICP/0800	ICP/2000
EMTF	O-195	4/22	Gene Paul Matson		1	ICP/0800	ICP/2000
<b>6. Control Operations/Work Assignments:</b>							
<b>Task:</b>							
<ul style="list-style-type: none"> <li>• Patrol and conduct mop up 25 ft. from control line</li> </ul>							
<b>Purpose:</b>							
<ul style="list-style-type: none"> <li>• To keep fire south of Preserve Boundary and west of ADD 17 to protect private land with structures</li> </ul>							
<b>End State:</b>							
<ul style="list-style-type: none"> <li>• Control fire to eliminate threats to Seminole Tribe of Florida and private property</li> </ul>							
<b>7. Special Instructions:</b> Establish and maintain LCES during operational period. Coordinate with Field OPS in the event swing shift resources are required. Follow tracked vehicle requirements restriction. Utilize MIST tactics as outlined in Fire Operations Guide for BICY.							
<b>8. Division/Group Communication Summary</b>							
Function	Channel	RX Frequency N/W	RXTone/NAC	TX Frequency N/W	TX Tone/NAC	Mode	
COMMAND	12	166.6125		168.4000	110.9	A	
COMMAND	13	168.7000		170.9750	110.9	A	
TACTICAL	8	166.7500		166.7500		A	
AIR TO GROUND	10	168.3250		168.3250		A	
<b>9. Prepared By (Resource Unit Leader)</b>		<b>Approved By (Planning Section Chief)</b>			<b>Date</b>	<b>Time</b>	
/s/Sue Wilder/Steve Wells		Terry Pierce			04/18/17	16:00	



## Division/Group Assignment List (ICS 204 WF)

<b>1. Incident Name:</b>			<b>3.</b>				
Cowbell Fire			<b>Branch:</b>		<b>Division/Group</b>		
<b>2. Operational Period:</b>			<b>IA</b>				
Date/Time From: 04/19/17 0800	Date/Time To: 04/19/17 2000						
<b>4. Operations Personnel</b>							
AIR ATTACK SUPERVISOR			OPERATIONS		Paul Reynolds		
			STATEGIC OPERATIONS		Jim Durrwachter		
			DEPUTY OPERATIONS		Dwight Snow		
DIVISION/GROUP SUPERVISOR	Kris Wilson		PLANNING OPERATIONS		Michael Heard		
<b>5. Resources Assigned this Period</b>							
Strike Team / Task Force / Resource Designator		LWD	Leader		Number Persons	Drop Off PT./Time	Pick Up PT./Time
<b>Oasis Staging</b>							
TFLD **	O-60	4/19	Harold Kibbe		1	ICP/0800	ICP/2000
ENG6 Big Thickett **	E-57	4/19	Gus Schaefer		2	ICP/0800	ICP/2000
T2IA PR-1	C-7 MOD B	4/28	Louis Saez		10	ICP/0800	ICP/2000
ENG6 Wildlands Fire Service	E-122	4/25	Chad Anderson		3	ICP/0800	ICP/2000
BICY Suppression Buggy #1	E-129	4/23	James Ray		1	ICP/0800	ICP/2000
ENG6 KS-PSF #671	E-140	4/28	Kyle Avesing, Andrew Laudie (t)		3	ICP/0800	ICP/2000
SOFR	O-54	4/26	Kris Croddy		1	ICP/0800	ICP/2000
EMTF	O-197	5/1	Chris Santopietro		1	ICP/0800	ICP/2000
<b>Deep Lake Staging</b>							
TFLD	O-144	4/24	Willard Worley		1	ICP/0800	ICP/2000
TFLD (t)	O-177	4/30	David Moore		1	ICP/0800	ICP/2000
T2IA PR-1	C-7 MOD A	4/28	Roberto Martinez		10	ICP/0800	ICP/2000
ENG6 Attack One	E-58	4/19	Kevin Carter		2	ICP/0800	ICP/2000
ENG6 CSP661	E-59	4/20	Jason Johnson		2	ICP/0800	ICP/2000
ENG6 K31 **	E-7	4/29	Jonathan O-Gorman		2	ICP/0800	ICP/2000
BICY Suppression Buggy #6	E-68 (OS 4/19)	4/22	Sam Ashbaugh**		1	ICP/0800	ICP/2000
BICY Suppression Buggy #2	E-64	4/23	Chris Dargan		3	ICP/0800	ICP/2000
SOFR	O-135	4/25	Donald Foco		1	ICP/0800	ICP/2000
EMTF	O-18	4/22	Bob Bruington		1	ICP/0800	ICP/2000
EMTP	O-199	5/1	Tom Christian		1	ICP/0800	ICP/2000
<b>6. Control Operations/Work Assignments:</b>							
<b>Task:</b>							
<ul style="list-style-type: none"> <li>• Coordinate with BICY duty officer for notification of newly reported ignitions. Coordinate initial attack action with assigned aviation and /or ground assets</li> <li>• Determine IA resource prepositioning needs across BICY and FPWR</li> </ul>							
<b>Purpose:</b>							
<ul style="list-style-type: none"> <li>• Ensure communications with FL Hwy Patrol regarding smoke on I-75 and Hwy 41. Ensure timely response on any IA within BICY and FPWR</li> </ul>							
<b>End State:</b>							
<ul style="list-style-type: none"> <li>• Protect human life. Minimize environment damage to protect habitat of threatened and endangered species. Minimize damage to public and private property.</li> </ul>							
<b>7. Special Instructions: **Resources identified for swing shift if needed. Coordinate with Field OPS to determine need. Follow tracked vehicle requirement restrictions. Establish and maintain LCES during operational period. Utilize MIST tactics as outlined in Fire Operations Guide for BICY.</b>							
<b>8. Division/Group Communication Summary</b>							
Function	Channel	RX Frequency N/W	RX Tone/NAC	TX Frequency N/W	TX Tone/NAC	Mode	
COMMAND	1	172.4250	1035	170.1000	1035	D	
COMMAND	2	172.4250	1035	171.6250	1035	D	
COMMAND	7	164.6250	1188	163.1500	1188	D	
TACTICAL	9	166.8250		166.8250		A	
AIR TO GROUND	6	169.1125		169.1125		A	
<b>9. Prepared By (Resource Unit Leader)</b>			<b>Approved By (Planning Section Chief)</b>			<b>Date</b>	<b>Time</b>
/s/Sue Wilder/Steve Wells			Terry Pierce			04/18/17	16:00

## Division/Group Assignment List (ICS 204 WF)

<b>1. Incident Name:</b>			<b>3.</b>				
Cowbell Fire			<b>Branch:</b>		<b>Division/Group Parliament/ Misc. Fire Patrol</b>		
<b>2. Operational Period:</b>							
Date/Time From: 04/19/17 0800		Date/Time To: 04/19/17 2000					
<b>4. Operations Personnel</b>							
AIR ATTACK SUPERVISOR				OPERATIONS		Paul Reynolds	
				STRATEGIC OPERATIONS		Jim Durrwachter	
				DEPUTY OPERATIONS		Dwight Snow	
DIVISION/GROUP SUPERVISOR				PLANNING OPERATIONS		Michael Heard	
<b>5. Resources Assigned this Period</b>							
Strike Team / Task Force / Resource Designator		LWD	Leader		Number Persons	Drop Off PT./Time	Pick Up PT./Time
<b>6. Control Operations/Work Assignments:</b>							
<b>Task:</b>							
<ul style="list-style-type: none"> <li>Patrol and monitor fires on BICY and FPWR with aviation and ground assets as directed by lead OSC commensurate with values at risk</li> <li>Monitor fires for further suppression management action</li> </ul>							
<b>Purpose:</b>							
<ul style="list-style-type: none"> <li>Assure suppression action taken limits environmental impact, consistent with MIST tactics</li> </ul>							
<b>End State:</b>							
<ul style="list-style-type: none"> <li>Protect human life</li> <li>Minimize damage to public and private property</li> <li>Minimize environmental damage to protect habitat of threatened and endangered species</li> </ul>							
<b>7. Special Instructions:</b> Follow tracked vehicle requirement restrictions. Establish and maintain LCES during operational period. Utilize MIST tactics as outlined in Fire Operations Guide for BICY.							
<b>8. Division/Group Communication Summary</b>							
Function	Channel	RX Frequency N/W	RXTone/NAC	TX Frequency N/W	TX Tone/NAC	Mode	
COMMAND	7	164.6250	1188	163.1500	1188	D	
TACTICAL	11	166.7250	0659	166.7250	0659	D	
AIR TO GROUND	10	168.3250		168.3250		A	
<b>9. Prepared By (Resource Unit Leader)</b>			<b>Approved By (Planning Section Chief)</b>			<b>Date</b>	<b>Time</b>
/s/Sue Wilder/Steve Wells			Terry Pierce			04/18/17	16:00



## INCIDENT RADIO COMMUNICATIONS PLAN (ICS 205)

3. Operational Period: DAY									
Date/Time From: 04/19/2017 0800			Date/Time To: 04/19/2017 2000						
Zone Group	Ch #	Function	Assignment	RX Freq	RX Tone/NAC	TX Freq	TX Tone/NAC	Mode (A,D, or M)	Remarks
	1	CARNS RPT	Initial Attack	172.4250	1035	170.1000	1035	D	Talk Group 1
	2	OASIS RPT	Initial Attack	172.4250	1035	171.6250	1035	D	Talk Group 1
	3	BCY LCL		166.7750	No Tone	166.7750	No Tone	A	
	4	BICY TAC 1	Division A /D	168.6000	No Tone	168.6000	No Tone	A	
	5	BICY LCL 2	DIVISION G	168.2500	No Tone	168.2500	No Tone	A	
	6	A/G 59	Initial Attack	169.1125	No Tone	169.1125	No Tone	A	
	7	Panther RPT	Initial Attack Parliament	164.6250	1188	163.1500	1188	D	Talk Group 1
	8	PANTHER TAC 1	DIVISION Z	166.7500	No Tone	166.7500	No Tone	A	
	9	PANTHER TAC 2	Initial Attack	166.8250	No Tone	166.8250	No Tone	A	
	10	A/G 85	ALL DIVISIONS	168.3250	No Tone	168.3250	No Tone	A	
	11	Everglades TAC 1	Parliament Misc.	166.7250	0659	166.7250	0659	D	
	12	CMD 12	DIVISION A/Z	166.6125	No Tone	168.4000	110.9	A	
	13	CMD 13	DIVISION D/G/Z	168.7000	No Tone	170.9750	110.9	A	
	14	A/G	Aerial Ignition	167.9500	No Tone	167.9500	No Tone	A	
	15	CMD 15	DIV G	173.0375	No Tone	167.3250	110.9	A	
	16	AIR GUARD		168.6250	No Tone	168.6250	110.9	A	
Name: MARK SPANN			Signature: /s/ Mark Spann						
			Date/Time: 04/18/2017 1600						

# Cowbell Fire Incident Laundry Services

Laundry services for all personnel assigned to the Cowbell Fire is now available. Laundry can be dropped off at the laundry trailer directly adjacent to supply on Monday and Thursday mornings. Clean laundry will be available for pick up at the laundry trailer by 1500 Tuesday and Friday. All clean laundry will be INSIDE the laundry trailer. You can pick up your laundry anytime. Please follow these simple instructions:

1. Place your dirty laundry in a bag and take it to the laundry trailer.
2. Fill out two tags with your name and O or E number.
3. Fill out sign-up sheet.
4. Give your laundry to the Facilities Unit personnel who will be present to assist you.
5. When you pick up your clean laundry please sign next to your name on the sign-up sheet where it indicates that you received it. The clipboard with the sign-up sheet will be inside the trailer.
6. Please close the trailer door after you have picked up your clean laundry or ask Facilities Unit personnel to assist you.

We are pleased to offer this service. If you have any questions please ask Facilities Unit personnel.

## Training Message



**Question:** Where can I find descriptions of the required training courses I need to reach my ICS qualification(s) objective(s)?

**Answer:** The Field Managers Course Guide (PMS 901-1) is an approved National Wildfire Coordinating Group (NWCG) publication for the guidance of its member agencies. The Guide lists NWCG approved courses, course descriptions, and prerequisites for the NWCG training curriculum. This guide is to be used in tandem with the "Wildland Fire Qualification System Guide," PMS 310-1. The most recent versions of both guides are dated October 2016. Both guides are available on-line through the publications link of the NWCG website.

### Training Specialists

Debra Burgos, 404-987-3256

Mary Leathers, 979-218-3030

**STOP - THINK – TALK- ACT**

# AIR OPERATIONS SUMMARY

OPERATIONAL PERIOD DATE: 04-19-2017

0800-2000

1. INCIDENT NAME: Cowbell	2. PREPARED BY: John Bragg      PREPARED DATE/TIME: 04/18/2017 1800	3. Sunrise: 0659    Sunset: 1950
<p>4. REMARKS (Safety Notes, Hazards, Air Operations Special Equipment., etc.): Medivac Aircraft: <b>6HX</b>  MTR- Located along state road 29. Fire Dispatch gets MTR activity every morning  Do not over fly structures with external load missions.  All aircraft should use strobes and running lights in smoky conditions.  Hazards: Snags, non-incident aircraft, and winds.  Contract helicopter working special use permit in North Central portion of BICY. Area identified on pilot briefing board. ATGS has air to air communications.  <b>Cease all operations at sunset</b></p>		<p>5. Squawk 1255   TFR—7/7786 ZMA FL, Airspace 25 nm NE of Ochopee SFC 3000ft. Contact 118.825   NOTAM – 04/054 – Airspace firefighting aircraft 5nm of (9FL7) SFC 2000ft.</p>

6. PERSONNEL	Phone	7. FREQUENCIES	AM	FM	8. FIXEDWING	Base
AOBD: John Bragg AOBD-T Mike Mowery ASGS: Matt Clinton	423-483-2798 870-615-0287 208-634-9414	Air/Air Rotor	123.575		Air Attack- Air Attack	197GB – Aero Commander MKY 4566M Baron MKY
ATGS: Steve Little ATGS: Jay Lindgren	828-778-2077 406-461-1652	Air/Air Fixed Wing	118.825	Air/Ground Cowbell	T-801 T-493	Seat –IMM, Start 0900 Seat —IMM, Start 0900
Oasis Helibase (9FL7) HEB1 Mark Oetzmann HEB1-T Jay Thatcher Immokalee Airport Seat Manager Jack Benzilio HMGB—Tracy Elliot HMGB – Brian Butler	239-695-0278 208-315-5030 970-903-7922  970-799-1232 303-910-7619 970-946-8068	Air/Ground IA Air/Ground Aerial Ignition		168.3250 RX/TX (A)  169.1125 RX/TX (A) 167.9500 RX/TX (A)		
Big Cypress Fire Dispatch	239-695-9280 x 104	Flight Following (BICY)		169.7250 RX N1514  163.3875 TX N1738		
		Air/Guard		168.6250 RX/TX Tone 110.9		
		Deck		166.7750		

## 9. HELICOPTERS (Use Additional Sheets As Necessary)

FAA N# or Designator	TY	MAKE/MODEL	BASE	START	REMARKS	FAA N# or Designator	TY	MAKE/MODEL	BASE	START	REMARKS
206RW	3	Bell 206	Oasis	1300	Map/Recon	1KA	1	K-MAX	Oasis	0900	Bucket
28HX	2	Bell 205	Oasis	0900	Crew/Bucket	612CK	1	S-61	IMM	0900	Tanked
16HX	2	Bell 205	Oasis	0900	Crew/Bucket	718	1	CH-54	IMM	0900	Tanked
0HH	3	Bell 206	Oasis	0800	Map/Recon						

## 10. TASK/MISSION/ASSIGNMENT (Use ICS-220a if additional space needed; Type/Function includes: Air Tactical, Retardant, Recon, Personnel Transport, Water Dropping, etc.)

TYPE/FUNCTION	NAME OF PERSONNEL OR CARGO (if applicable) OR INSTRUCTIONS FOR TACTICAL AIRCRAFT	MISSION START	FLY FROM	FLY TO
Mapping	As Requested	0930		
Reconnaissance	As Requested	0930		
Water Drops	As Requested	0930		



## MEDICAL PLAN (ICS 206)

<b>1. Incident Name:</b> Cowbell Fire		<b>2. Operational Period:</b> Date From: 04-19-17 Date To: 04-19-17 Time From: 0800 Time To: 2000					
<b>3. Medical Aid Stations:</b>							
Name	Location	Contact Number(s)/Frequency	Paramedics on Site?				
Shanna Ellis MEDL	Medical ICP	318-229-6515	<input type="checkbox"/> Yes	X No			
Matt Moran MEDL (T)	Medical ICP	907-887-1539	<input type="checkbox"/> Yes	X No			
Jim Stout	Division G	480-296-1566	x Yes	<input type="checkbox"/> No			
Adam White	Division G	910-391-9053	<input type="checkbox"/> Yes	X No			
Brandon Little	Division A/D	815-575-1563	<input type="checkbox"/> Yes	X No			
Frank Abel	Division A/D	423-595-1578	x Yes	<input type="checkbox"/> No			
Gene-Paul Matson	Division Z	434-665-0444	<input type="checkbox"/> Yes	X No			
Chris Santopietro	Division IA	303-913-4149	<input type="checkbox"/> Yes	X No			
Tom Christian	Division IA	727-389-2481	X Yes	<input type="checkbox"/> No			
Bob Bruington	Division IA	801-782-3585	<input type="checkbox"/> Yes	X No			
<b>4. Transportation (indicate air or ground):</b>							
Ambulance Service	Location	Contact Number(s)/Frequency	Level of Service				
Collier County EMS (ground)	Everglades City (Medic 61)	911	x ALS	<input type="checkbox"/> BLS			
Collier County Med-Flight (air)	Naples Airport	911	x ALS	<input type="checkbox"/> BLS			
6HX Bell 205 (air) medical evacuation	Oasis Heli-base	168.3250 (A/G 85)	<input type="checkbox"/> ALS	x BLS			
<b>5. Hospitals:</b>							
Hospital Name	Address	Contact Number(s)	Travel Time		Trauma Center	Burn Center	Helipad
			Air	Ground			
Physicians Regional Collier Blvd	8300 Collier Blvd. Naples, FL 34114 Lat:26°6.313'/Long: -81°41.106'	239-354-6000 (Main) 239-354-6190 (ER)	15	50	<input type="checkbox"/> Yes Level: _____	<input type="checkbox"/> Yes x No	x Yes <input type="checkbox"/> No
Physicians Regional Pine Ridge	6101 Pine Ridge Road, Naples 34119 Lat:26°12.833'/Long: -81°43.954'	239-348-4000 (Main) 239-304-4748 (ER)	15	50	<input type="checkbox"/> Yes Level: _____	<input type="checkbox"/> Yes x No	x Yes <input type="checkbox"/> No
Naples Community Hospital	350 7 <sup>th</sup> Street North, Naples 34102 Lat:26°9.046'/Long: -81°47.907'	239-513-7709 (Main) 239-436-5151 (ER)	15	60	X Yes Level: <u>2</u>	<input type="checkbox"/> Yes x No	x Yes <input type="checkbox"/> No
Jackson Memorial Hospital	1611 NW 12 Avenue, Miami Lat:25°47.508'/Long: -80°12.756'	305-585-1111 (Main) 305-585-6910 (ER)	20	60	X Yes Level: <u>1</u>	x Yes <input type="checkbox"/> No	x Yes <input type="checkbox"/> No
Kendal Regional Medical Center	11750 SW 40 <sup>th</sup> St., Miami 33175 Lat:25°43.916'/Long: -80°23.148'	305-223-3000 (Main) 305-227-5544 (ER)	20	50	X Yes Level: <u>1</u>	<input type="checkbox"/> Yes x No	X Yes <input type="checkbox"/> No
<b>6. Special Medical Emergency Procedures:</b>							
<ul style="list-style-type: none"> <li>• Patient or nearest responder notifies Group Supervisor who will respond to the scene and become the "incident within an incident" (IWI) commander.</li> <li>• <b>Group Supervisor will notify nearest medical responder and ICP-Communications</b> of the incident and "Nine Line" report attached to the back of this IAP or page 108 of the IRPG.</li> </ul> <p>Call "784" (Emergency &amp; Law Enforcement) Everglades Communications on the <b>Oasis or Carns Repeater</b>, or by phone at <b>1-800-788-0511</b> if it is determined that a <b>pre-hospital medevac care, air hoist capability or snake bite treatment</b> is required. MedFlight located at Naples Municipal Airport will be used for pre-hospital medevac care. Miami-Dade Fire Rescue (MDFR) Air Rescue Bureau will be used for air hoist rescue and also for snake bite treatment. Everglades Communications will advise the 911 dispatcher for Collier or Dade County for their helicopter to communicate through the Incident's Air/Ground frequency.</p> <p>Note: If possible, give coordinates in aviation format – Degrees Decimal Minutes</p> <p><input type="checkbox"/> Check box if aviation assets are utilized for rescue. If assets are used, coordinate with Air Operations.</p>							
<b>7. Prepared by (Medical Unit Leader):</b> Name Shanna Ellis				Signature: <u>/s/ Shanna Ellis</u>			
<b>8. Approved by (Safety Officer):</b> Name: Brian Beisel				Signature: <u>/s/ Brian Beisel</u>			
ICS 206		IAP Page _____		Date/Time: <u>04/18/2017</u>			

**PROPOSED DMOB FOR NEXT 6 DAYS 4/19/17**

DEMOB	TRV	REQ #	RESOURCE NAME	UNIT ID	KIND	DEMOB	TRV	REQ #	RESOURCE	UNIT ID	KIND
04/18/2017	AOV		MASTICATOR - BOOM	FL-FLS	MAST	04/24/2017			ENGINE - T3 - CA-SHF		ENG3
		E-6	MOUNTED, TYPE 3 - T 1736 JOHN DEERE				AIR	E-98	CA-SHF - 321		
04/18/2017	AOV	E-37	FLS FLATBED ACS10427	FL-FLS	FLAT	04/24/2017	AIR	E-99	ENGINE - T3 - CA-SHF		ENG3
04/18/2017	AOV	E-61	NEW HOLLAND TB 110HP TRACTOR 4X4	FL-SEA	DOZ3	04/24/2017	AIR	E-100	ENGINE - T3 - CA-MNF		ENG3
04/19/2017	AOV	C-6	CREW - T1 - ASHEVILLE HOTSHOTS	NC-NCF	HC1	04/24/2017	A/R	O-8	BROWNLOW , SCOTT R	NM-WOF	RADO
04/19/2017	A/R	O-30	RIHA-FOX, CONNIE	CO-PSF	HMGB	04/24/2017	AOV	O-21	MODULE -	AR-BUP	HCM
04/19/2017	AOV		MODULE - WILDLAND	TN-GSP	HCM	04/24/2017			RAY, JAMES	MT-CGF	THSP
		O-102	FIRE - SER - GREAT SMOKY MOUNTAINS NP				A/R	O-113	M		
04/20/2017	AOV	E-57	ENGINE - T6 - 461 - NPS	TX-BTP	ENG6	04/24/2017	A/R	O-117	REYNOLDS,	CA-SRF	TFLD
04/20/2017	OTH		ENGINE - T6 - ATTACK-	GA-R08	ENG6	04/24/2017			MATHESON,	CA-MNF	TFLD
		E-58	ONE FIRE MANAGEMENT SERVICES INC				A/R	O-118	NICHOLAS W		
04/20/2017	OTH	E-86	ENGINE - T6 - FIRE TRAX LLC - B65014 - 610	GA-R08	ENG6	04/24/2017	AOV	O-121	BANNON,	LA-KIF	SEC1
04/20/2017	OTH		ENGINE - T6 - WILDLANDS	GA-R08	ENG6	04/24/2017			DARGAN,	MT-CES	THSP
		E-87	FIRE SERVICE INC - A57267 - 8				A/R	O-129	CHRIS		
04/20/2017	A/R	O-37	HOLLAND, ANDREA J	CO-GJD	THSP	04/24/2017	A/R	O-130	DOBBS,	AZ-SUM	PSC1
04/20/2017	A/R	O-54	CRODDY, KRIS	AZ-CNF	DIVS	04/25/2017	OTH	E-83	GEO-BOY	NC-ALR	MAST
04/20/2017	A/R	O-55	ALLUISI, CHARLES	CO-ARF	DIVS	04/25/2017	A/R	O-5	CORNETT,	TX-TXF	LSC2
04/20/2017	AIR	O-59	LOWE, JANICE	GA-R08	COST	04/25/2017	AOV	O-125	SHACKELFO	VA-GDR	STOP
04/20/2017	A/R	O-60	KIBBE, HAROLD L	MI-HMF	TFLD	04/25/2017	A/R	O-127	CZERNIK,	DC-WOR	INBA
04/20/2017	A/R	O-61	MARQUEZ, MARIO	UT-MOD	TFLD	04/25/2017	AOV	O-128	MCHAN,	NC-SRS	EQPM
04/20/2017	A/R	O-63	DALLISON, DAVID	CO-DRS	SOFR	04/25/2017	A/R	O-135	FOCO JR,	MI-HMF	SOFR
04/20/2017	POV	O-110	MITCHELL, CRAIG	FL-BCP	THSP	04/25/2017	A/R	O-144	WORLEY,	KY-DBF	TFLD
04/21/2017	OTH		CAPTAIN STEVE'S SWAMP BUGGY AD.	FL-BCP	ATV	04/25/2017	AIR	O-190.40	BAKER, JARED	KY-LBF	BCMG
04/21/2017	AOV	E-59	ENGINE - T6 - CSP 661	SC-CSP	ENG6	04/25/2017	????	O-1002	GOODWIN,	FL-BCP	PILO
04/21/2017	OTH	E-1011	SEMINOLE PERTROLIUM- FUEL TENDER	FL-BCP	FT1						
04/21/2017	A/R	O-26	MESERTH, MORGAN	OR-OCF	ABRO						
04/21/2017	AOV	O-65	BLAKE, SUSAN M	FL-FNF	PIO2						
04/22/2017	A/R		CREW - CAMP - PINE KNOT JCC - CREW #2	KY-DBF	CC						
		C-4									
04/22/2017	A/R	O-17	MED KIT STOUT	AZ-CGR	EMTF						
04/22/2017	AOV	O-40	SEEHASE, ROBERT J	WI-CNF	SEC1						
04/22/2017	A/R	O-89	FOLEY, JOHN	NV-LAP	SOFR						
04/22/2017	POV	O-195	MATSON, GENE-PAUL	VA-VAS	EMTF						
04/23/2017	A/R	O-18	BRUINGTON, ROBERT	UT-FIF	EMTF						
04/23/2017	A/R	O-101	REGAN, RONALD	VA-SHP	COML						
04/23/2017	A/R	O-124	BARR, JESSE M	AZ-NOW	HEQB						

**Check your proposed DMOB (TRAVEL DATE) If  
it appears wrong, see DMOB**

**DMOB date = TRAVEL date**

**PHONE LIST - COWBELL FIRE**

<b>Position</b>	<b>Name</b>	<b>Phone Number</b>	<b>Position</b>	<b>Name</b>	<b>Phone Number</b>
<b>COMMAND</b>			<b>OPERATIONS</b>		
Incident Commander	Mike Wilkins	828-421-5026	Ops Section Chief	Paul Reynolds	662-418-9743
Incident Commander (t)	Andy Baker	706-400-2150	Ops Section Chief Deputy	Dwight Snow	352-516-4969
Deputy Incident Commander	Mark Morales	479-264-7991	Planning Ops	Michael Heard	334-488-5966
			Planning Ops (t)	Paul Vernedoe	423-650-2184
Liaison Officer	Andy Gaston	706-508-2363	Division A/D	Kerry Clark	205-272-2424
Public Information	Terry Krasko	479-280-0452	Division G	Vic Doig	352-493-3155
Public Information	Michael R Williams	470-599-3926	Division Z	Tim Nutley	479-227-0893
Safety Officer	Brian Beisel	270-978-1610	Division Initial Attack	Chris Wilson	918-314-7264
			Division Structure Protection	Shawn Nagle	662-231-4024
			<b>AIR OPERATIONS</b>		
			Air Ops Branch Director	John Bragg	423-483-2798
<b>PLANNING</b>			Air Ops Branch Director (t)	Mike Mowry	870-214-0034
Chief	Terry Pierce	423-596-2694	Air Tactical Gropu Supervisor	Steve Little	
Chief	Dave Dobbs	928-699-5706	Air Support Group Supervisor	Matt Clinton	
Resource Unit Leader	Sue Wilder	985-264-2288	Oasis Helibase Manager	Mark Oetzmann	208-315-5030
Resource Unit Leader	Steve Wells	803-603-0502			
Situation Unit Leader	Michael J Williams	828-835-0094			
Fire Behavior Analyst	Glenn Fortenberry	501-762-3751	<b>LOGISTICS</b>		
Air Resource Advisor	Andrea Holland	970-274-0010	Chief	Cindy Schiffer	540-230-1269
READ	JoAnne Young	970-422-2246	Chief	Bill Lisowsky	270-816-7417
IMET	Steven Ippoliti	954-826-9405	Chief (t)	Terry Holsclaw	435-201-4443
GISS	Alan Smith	903-261-3294	Chief (t)	Chris Alford	571-334-8549
GISS	Katy McCurdy	404-210-3996	Ground Support Unit Leader	Joe Emberson	580-317-5315
Demob	Henry Hickerson	540-798-2218	Ground Support Unit Leader	Randy Chapin	601-405-5711
Check In	Allison Cochran	256-566-5509	Ground Support Unit		772-631-2568
Training Specialist	Debra Burgos	404-987-3256	Equipment Manager		
Technology Support	Dan Leduc	318-613-0362	Ordering Manager	Sandy Rhodes	501-282-0085
Technology Support	Scotty Griess	770-595-1521	Ordering Manager	Natalie Broce	540-968-3734
			Supply Unit Leader	Bill Kitchings	601-741-2296
			Facilities (t)	Jared Baker	270-804-5182
			Facilities (t)	Jamie Jones	
<b>FINANCE</b>			Communications	Mark Spann	936-208-0488
Chief	Randee Olson	218-370-0561	Comms Trailer		772-631-2573
Time Unit Leader	Sandra Fix	540-460-2509	Medical Unit Leader	Shanna Ellis	318-229-6515
Cost Unit Leader	Susan Deimel	501-337-3598	Security Manger	David Clark	573-714-5142
Comp/Claims	Donna Rogers	803-295-3033	Security Mananger (t)	RJ Seehase	414-739-5696
Procurement	Leslie Solberg	360-553-9830	Security	Chris Kelly	978-580-9245
			Security	Bain Bannon	318-446-1759
			Security	Sam Maldonado	909-522-6905
			Security	Stanley Garner	352-672-1036
			Big Cypress National Preserve	Duty Officer	239-719-0241

81°24'W 81°20'W 81°16'W 81°12'W 81°8'W 81°4'W 81°0'W 80°56'W 80°52'W 80°48'W

26°28'N 26°24'N 26°20'N 26°16'N 26°12'N 26°8'N 26°4'N 26°0'N 25°56'N 25°52'N 25°48'N 25°44'N

21,156 acres  
04/18/2017  
1900 hrs

# Immokalee

# Cowbell Fire

## Vicinity Map

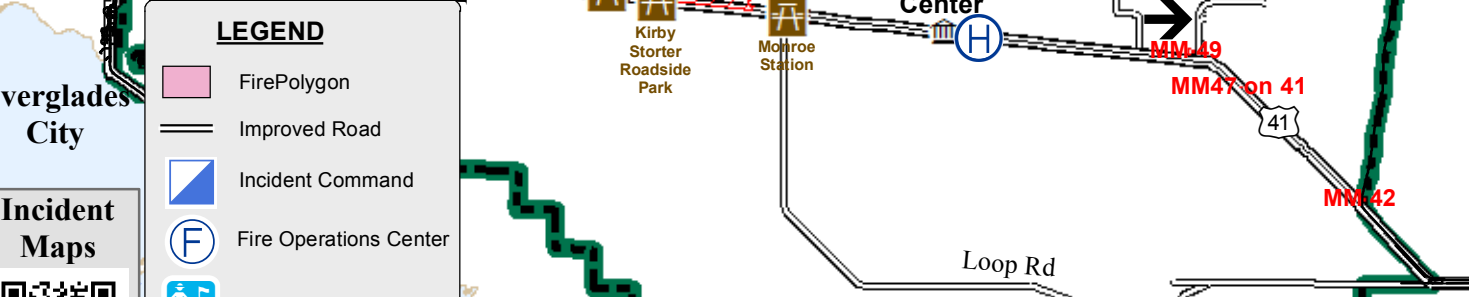
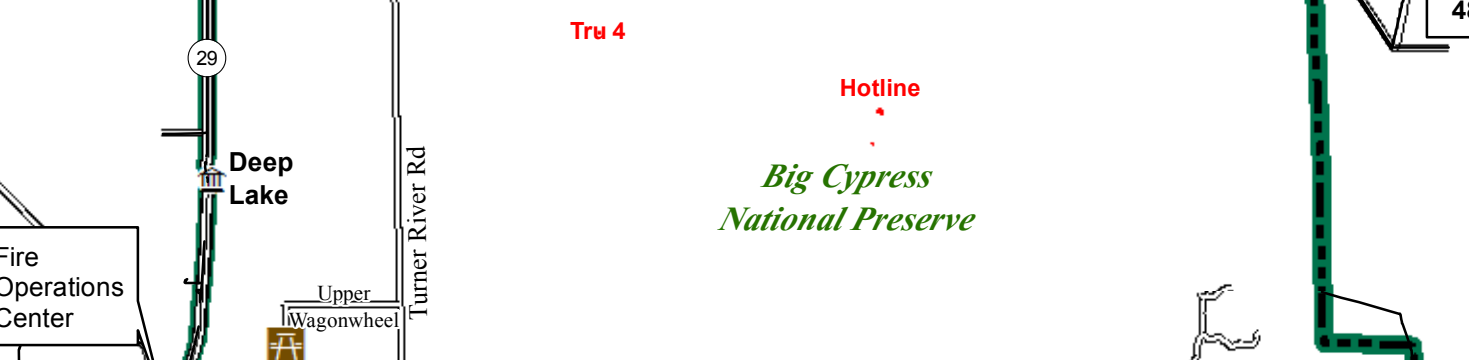
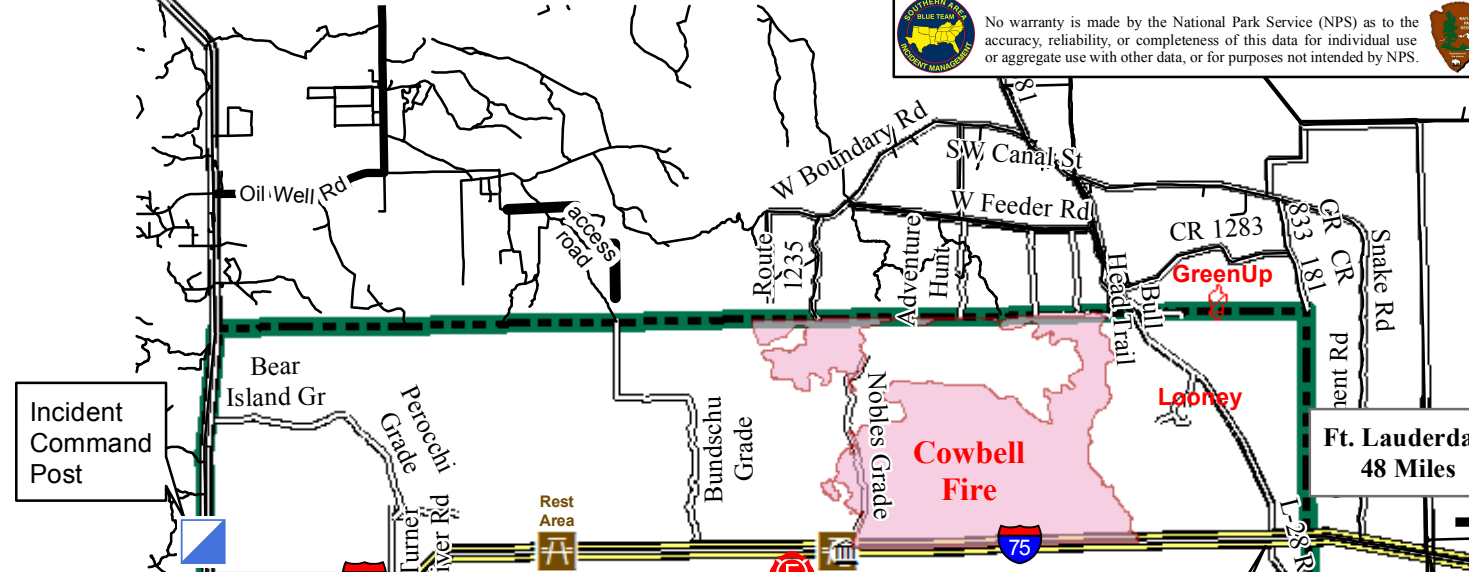
U.S. Department of the Interior  
Big Cypress National Preserve  
33100 Tamiami Trail East  
Ochopee, FL 34141



North American Datum 1983  
Map Created 4/18/2017



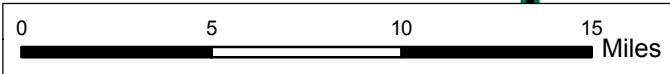
No warranty is made by the National Park Service (NPS) as to the accuracy, reliability, or completeness of this data for individual use or aggregate use with other data, or for purposes not intended by NPS.



**LEGEND**

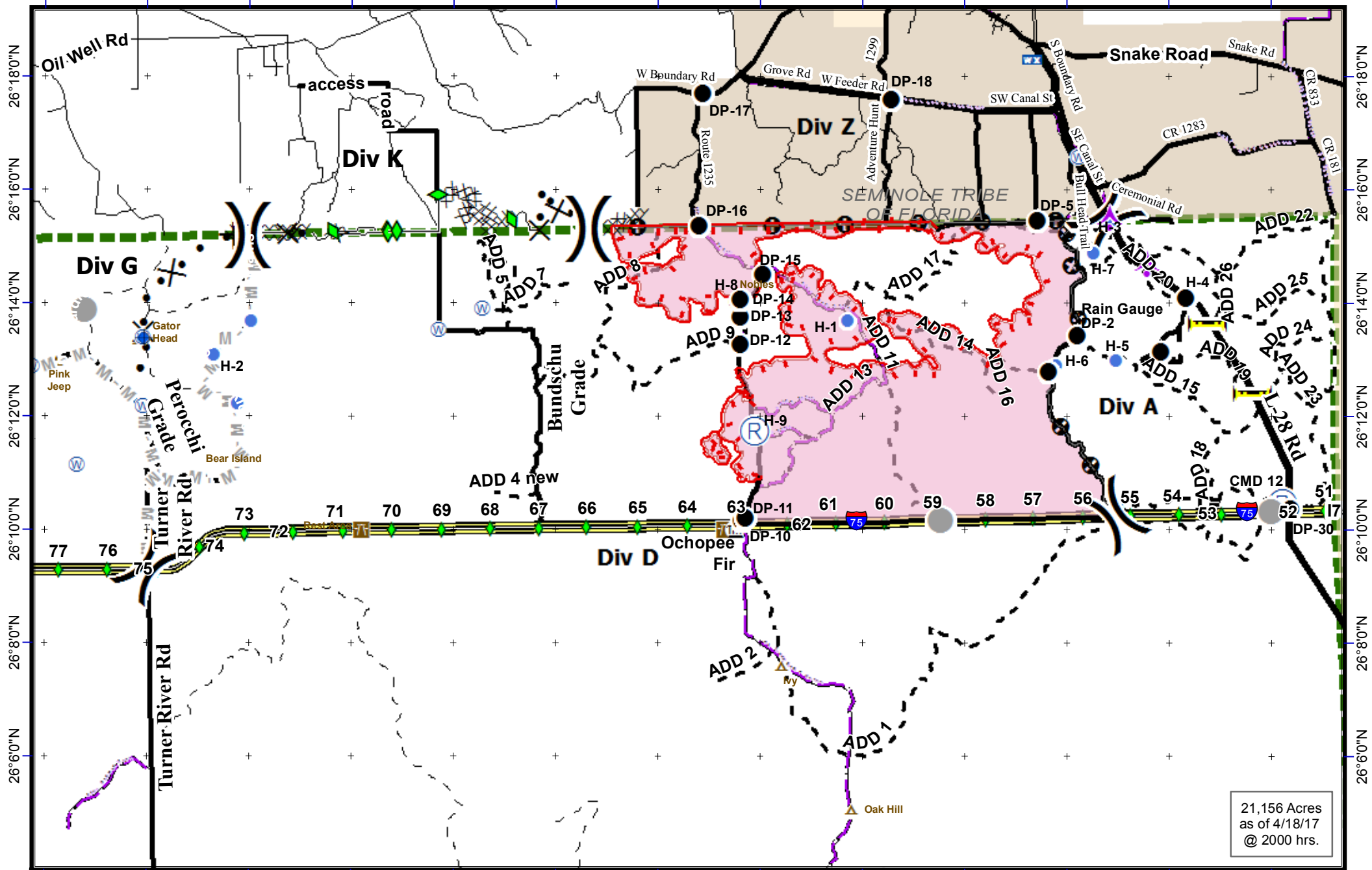
- FirePolygon
- Improved Road
- Incident Command
- Fire Operations Center
- Preserve Headquarters
- 2017 Other Wildfires

**Incident Maps**



81°24'W 81°20'W 81°16'W 81°12'W 81°8'W 81°4'W 81°0'W 80°56'W 80°52'W 80°48'W

81°18'0"W 81°16'0"W 81°14'0"W 81°12'0"W 81°10'0"W 81°8'0"W 81°6'0"W 81°4'0"W 81°2'0"W 81°0'0"W 80°58'0"W 80°56'0"W 80°54'0"W



**Cowbell Fire**  
 FL-BCP-017033  
**IAP Map**  
 April 19, 2017  
 Day Shift



- ▬ Uncontrolled Fire Edge
- Completed Line
- M - M** Mastication Line
- Completed Disk Line
- Proposed Line
- Rain Gauge
- Drop Point
- Helispot
- ( ) Division
- WX Mobile Weather
- Ⓡ Repeater
- ▲ Aerial Hazard
- Private Structures
- NPS Property
- ▬ Bridge Locations
- I-75
- Improved Road
- Primary Buggy Trail

NAD 83 UTM 17

0 0.5 1 2 3 Miles





### Medical Incident Report- "9 Line"

**FOR ALL MEDICAL EMERGENCIES: IDENTIFY ON SCENE INCIDENT COMMANDER BY NAME AND POSITION AND ANNOUNCE "MEDICAL EMERGENCY" TO INITIATE RESPONSE FROM IMT COMMUNICATIONS/DISPATCH.**

Use items one through nine to communicate situation to communications/dispatch.

**1. CONTACT COMMUNICATIONS/DISPATCH - Comms Trailer Phone (772-631-2573)**

Radio Call Sign "784" for Life Threatening Emergencies on the Oasis or Carns repeater or by phone at 1-800-788-0511

*Ex: "Communications, Div. Alpha. Stand-by for Priority Medical Incident Report." (If life threatening request designated frequency be cleared for emergency traffic.)*

**2. INCIDENT STATUS: Provide incident summary and command structure.**

Nature of Injury/Illness		<i>Describe the injury (Ex: Broken leg with bleeding)</i>
Incident Name		<i>Geographic Name + "Medical" (Ex: Trout Meadow Medical)</i>
Incident Commander		<i>Name of IC</i>
Patient Care		<i>Name of Care Provider (Ex: EMT Smith)</i>

**3. INITIAL PATIENT ASSESSMENT: Complete this section for each patient. This is only a brief, initial assessment. Provide additional patient info after completing this 9 Line Report.**

Number of Patients:	Male / Female	Age:	Weight:
Conscious? <input type="checkbox"/> YES <input type="checkbox"/> NO = MEDEVAC!			
Breathing? <input type="checkbox"/> YES <input type="checkbox"/> NO = MEDEVAC!			
Mechanism of Injury: <i>What caused the injury?</i>			
Lat/Long (Datum NAD83)			

**4. SEVERITY OF EMERGENCY, TRANSPORT PRIORITY**

SEVERITY	TRANSPORT PRIORITY
<input type="checkbox"/> URGENT-RED Life threatening injury or illness. <i>Ex: Unconscious, difficulty breathing, bleeding severely, 2° – 3° burns more than 4 palm sizes, heat stroke, disoriented.</i>	Ambulance or MEDEVAC helicopter. Evacuation need is IMMEDIATE.
<input type="checkbox"/> PRIORITY-YELLOW Serious Injury or illness. <i>Ex: Significant trauma, not able to walk, 2° – 3° burns not more than 1-2 palm sizes.</i>	Ambulance or consider air transport if at remote location. Evacuation may be DELAYED.
<input type="checkbox"/> ROUTINE-GREEN Not a life threatening injury or illness. <i>Ex: Sprains, strains, minor heat-related illness.</i>	Non-Emergency. Evacuation considered Routine of Convenience.

**5. TRANSPORT PLAN:**

Air Transport: (Agency Aircraft Preferred)

<input type="checkbox"/> Helispot	<input type="checkbox"/> Short-haul/Hoist	<input type="checkbox"/> Life Flight	<input type="checkbox"/> Other
Ground Transport:			
<input type="checkbox"/> Self-Extract	<input type="checkbox"/> Carry-Out	<input type="checkbox"/> Ambulance	<input type="checkbox"/> Other

**6. ADDITIONAL RESOURCE/EQUIPMENT NEEDS:**

<input type="checkbox"/> Paramedic/EMT(s)	<input type="checkbox"/> Crew(s)	<input type="checkbox"/> SKED/Backboard/C-Collar
<input type="checkbox"/> Burn Sheet(s)	<input type="checkbox"/> Oxygen	<input type="checkbox"/> Trauma Bag
<input type="checkbox"/> Medication(s)	<input type="checkbox"/> IV/Fluid(s)	<input type="checkbox"/> Cardiac Monitor/AED
<input type="checkbox"/> Other (i.e. splints, rope rescue, wheeled litter)		

**7. COMMUNICATIONS:**

Function	Channel Name/Number	Receive (Rx)	Tone/NAC *	Transmit (Tx)	Tone/NAC *
COMMAND	CARNS Rpt Channel 1	172.4250	1035	170.1000	1035
COMMAND	OASIS Rpt Channel 2	172.4250	1035	171.6250	1035
COMMAND	CMD Channel 12	166.6125	No Tone	168.4000	110.9
AIR-TO-GRND	AG/85 Channel 10	168.3250	No Tone	168.3250	No Tone
TACTICAL					

\*(NAC for digital radio system)

**8. EVACUATION LOCATION:**

Lat/Long (Datum NAD83) <i>EX: N 40 42.45' x W 123 03.24'</i>	
Patient's ETA to Evacuation Location:	
Helispot/Extraction Size and Hazards:	

**9. CONTINGENCY:**

**Considerations:** If primary options fail, what actions can be implemented in conjunction with primary evacuation method? Be thinking ahead...

**REMEMBER:** Confirm ETA's of resources ordered  
Act according to your level of training  
Be Alert. Keep Calm. Think Clearly. Act Decisively.