



Incident Action Plan

Day Operational Period

Thursday

4/20/17

0800-2000

Cowbell Fire

21,815 acres

55% contained

FL-BCP-017033

PPKX14 (1502)

PFFSKX14017001

FFF2000000KX140



QR CODE
INCIDENT MAP

INCIDENT OBJECTIVES	1. Incident Name Cowbell Fire	2. Date Prepared 4/19/17	3. Time Prepared 1200
4. Operational Period 4/20/17 0800 - 2000			
5. General Control Objectives For The Incident <u>Objectives for the Incident:</u> <ul style="list-style-type: none"> • Protection of human life is top priority through the use of sound risk management decisions that are commensurate with values at risk. • Protect private property and infrastructure, federal facilities, critical transportation corridors, recreational and cultural resource values, T&E species and their habitat (e.g. Florida Panther, Florida bonneted bat, Red-Cockaded Woodpecker), and wilderness values through coordination with READS and following MIST Tactics on initial and extended attack fires. • Provide opportunities to communicate and educate the public on the role of fire in the BCP and FPR ecosystems through social media and other outlets. • Provide training opportunities for Preserve, State, and local federal fire agency personnel to actively enhance successional planning of future firefighting personnel. • Sustain and enhance relationships with the people we serve. 			
<u>Control Objectives:</u> <ul style="list-style-type: none"> • Utilize confine, contain, and point source protection strategies and tactics that commit responders only to operations where and when they can be successful. • In order to minimize impacts to high values including Seminole and Miccosukee tribal lands, Sanctuary community, and private land within and near to the boundaries of the Big Cypress National Preserve and Florida Panther Wildlife Refuge keep fire: <ul style="list-style-type: none"> ○ West of Add 14 and Add 17 on the eastern side ○ South of the Preserve boundary on the northern side ○ North of Interstate 75 on the south side ○ East of State Highway 29 on the west side • Provide initial attack for Big Cypress National Preserve and Florida Panther Refuge in coordination with local resources. • Minimize smoke impacts on I-75, State Road 29 and US Highway 41 in order to avoid safety threats to the public. 			
6. Weather forecast for Period See attached weather forecast.			
7. General Safety Message Look up, look down, look all around for hazards, recognize them and mitigate them.			
8. ATTACHMENTS (X IF ATTACHED) <input checked="" type="checkbox"/> Organization List - ICS 203 <input checked="" type="checkbox"/> Medical Plan - ICS 206 <input type="checkbox"/> _____ <input checked="" type="checkbox"/> Division Assignment Lists - ICS 204 <input checked="" type="checkbox"/> Air Ops – ICS 220 <input type="checkbox"/> _____ <input checked="" type="checkbox"/> Communications Plan - ICS 205 <input checked="" type="checkbox"/> Incident Map <input type="checkbox"/> _____			
9. Prepared By (Planning Section Chief) Terry Pierce/Dave Dobbs		10. Approved By (Incident Commander) Michael L Wilkins	

ORGANIZATION ASSIGNMENT LIST (ICS 203)

1. Incident Name:		2. Operational Period: DAY	
COWBELL		Date/Time From: 04/20/2017 0800	Date/Time To: 04/20/2017 2000 THU
3. Incident Commander(s) and Command Staff:		STATUS CHECKIN ALLISON COCHRAN (T)	
IC/UC	MICHAEL WILKINS ANDY BAKER (T)	6. Logistics Section:	
DEPUTY	MARK MORALES	CHIEF	CINDY SCHIFFER BILL LISOWSKY; TERRY HOLSCRAW (T)
LIAISON OFFICER	ANDY GASTON	SUPPLY UNIT	BILL KITCHINGS SANDY RHODES (T)
SAFETY OFFICER	BRIAN BEISEL IVAN CUPP	FACILITIES UNIT	SUSAN CORNETT JAMIE JONES (T), JARED BAKER (T)
INFORMATION OFFICER	TERRY KRASKO MICHAEL R WILLIAMS (T)	GROUND SUPPORT UNIT	JOE EMBERSON RANDY CHAPIN
4. Agency/Organization Representative(s):		COMMUNICATIONS UNIT	MARK SPANN
Agency/Organization	Name	MEDICAL UNIT	SHANNA F ELLIS MATT MORAN (T)
BIG CYPRESS NATIONAL PRESERVE	TAMMY WHITTINGTON J.D. LEE	SECURITY UNIT	DAVID CLARK R J SEEHASE (T)
BICY CHIEF OF FIRE AND AVIATION	JORDON MCKNIGHT	ORDERING MANAGER	NATALIE BROCE TAMMIE PERNAS (T)
BICY /PANTHER AFMO	BYRON HART	RECEIVING AND DISTRIBUTION MANAGER	PRAWIT HESS
PANTHER ZONE FMO	CASS PALMER	7. Operations Section:	
COLLIER COUNTY SHERIFF	LT. JAKE WALKER	OPS SECTION CHIEF	PAUL REYNOLDS
SEMINOLE TRIBE OF FLORIDA	MATT FLYING/GRANT STEELMAN	DEPUTY OPS SECTION CHIEF	DWIGHT SNOW
FLORIDA HIGHWAY PATROL	LT. JOSEPH BOWERS	STATEGIC OPS SECTION CHIEF	JIM DURRWACHTER
GREATER NAPLES FIRE RESCUE	J. NOLAN SAPP	PLANNING OPS	MICHAEL HEARD
FFS COLLIER CO. FOREST AREA SUP	TONY CURELLA		
FFS HENDRY CO. FOREST AREA SUP	JOE LECEA	DIVISION/GROUP	A/D KERRY CLARK
5. Planning Section:		DIVISION/GROUP	G VICTOR DOIG
CHIEF	TERRY PIERCE DAVE DOBBS	DIVISION/GROUP	K TIM NUTLEY
RESOURCES UNIT	SUE WILDER STEVE WELLS	DIVISION/GROUP	Z MICAH JOHNSON
SITUATION UNIT	MICHAEL J. WILLIAMS	DIVISION/GROUP	INITIAL ATTACK-DEEP LAKE STAGING KRIS WILSON
DOCUMENTATION UNIT	BOB SOBCZAK	DIVISION/GROUP	INITIAL ATTACK-OASIS STAGING KRIS WILSON
DEMOBILIZATION UNIT	HENRY HICKERSON	DIVISION/GROUP	STRUCTURE PROTECTION SHAWN NAGLE
FIRE BEHAVIOR ANALYST	GLEN FORTENBERRY	DIVISION/GROUP	PARLIAMENT AND MISC FIRES UNSTAFFED
TRAINING SPECIALIST	DEBRA BURGOS MARY LEATHERS (T)	7b. Air Operations Branch:	
GIS SPECIALIST	ALLEN SMITH KATY MCCURDY	AIR OPS BRANCH DIRECTOR	
TECHNOLOGY SUPPORT SPECIALIST	DAN LEDUC SCOTT GREST	AIR ATTACK SUPERVISOR	
INCIDENT METEOROLOGIST	STEVEN IPPOLITI	AIR SUPPORT SUPERVISOR	
STATUS CHECKIN	TERESA MOSS		
9. Prepared By:	Name: TERRY PIERCE/DAVE DOBBS	Position/Title: PLANNING SECTION CHIEF	Signature:
ICS 203	IAP Page	Date/Time: 04/19/2017 1900	

ORGANIZATION ASSIGNMENT LIST (ICS 203)

1. Incident Name:		2. Operational Period: DAY	
COWBELL		Date/Time From: 04/20/2017 0800	THU
		Date/Time To: 04/20/2017 2000	THU
HELICOPTER COORDINATOR			
AIR TANKER COORDINATOR			
AIR OPS BRANCH DIRECTOR	JOHN BRAGG MIKE MOWERY (T)		
AIR SUPPORT GROUP SUPERVISOR	MATT CLINTON		
AIR TACTICAL GROUP SUPERVISOR	STEVE LITTLE		
OASIS HELIBASE MANAGER	MARK OETZMANN		
8. Finance/Administration Section:			
CHIEF	RANDEE OLSON		
TIME UNIT	SANDRA FIX		
PROCUREMENT UNIT	LESLIE SOLBERG		
COMPENSATION UNIT	DONNA ROGERS		
COST UNIT	SUSAN DEIMEL		
PERSONNEL TIME RECORDER	PEDRA SETLICH KELLY DONALDSON		
9. Prepared By:	Name: TERRY PIERCE/DAVE DOBBS	Position/Title: PLANNING SECTION CHIEF	Signature:
ICS 203	IAP Page	Date/Time: 04/19/2017 1900	



Fire Weather Forecast

FORECAST NO:	18	NAME OF FIRE:	Cowbell Fire
PREDICTION FOR:	Thursday Day Shift	UNIT:	Big Cypress National Preserve
SHIFT DATE:	April 20, 2017	Incident Meteorologist:	<i>Steven Ippoliti</i>
FORECAST ISSUED:	1900 April 19, 2017		954-826-9405

DISCUSSION: High pressure, to the northeast, will keep the general wind out of the east. By late this afternoon, dry air begins to return to the area. Although a few showers may be possible, they should be brief with little accumulation. By Friday, dry air will be in place with possible red flag conditions through Saturday.

TODAY (THURSDAY DAY SHIFT):

WEATHER: Mostly sunny, becoming mostly cloudy in the afternoon. An isolated shower possible in the afternoon.
WIND (20 FT): Light & variable becoming east at 8 to 12 mph in the late morning.
MAX TEMPERATURES: 84 to 87.
MIN RH: 47%.
Chance of measurable rain: 20% **LAL:** 1
DISPERSION: 65 MAX **MIXING HEIGHT:** 5500 **TRANSPORT WIND:** East around 15 mph.

TONIGHT (THURSDAY NIGHT):

WEATHER: Partly cloudy.
WIND (20 FT): Calm to light and variable. Northerly drainage flow possible.
MIN TEMPERATURES: 61 to 65F.
MAX RH: 98 to 100%. **LVORI 9 (max).** **LAL:** 1 **LDSI:** 2 **Chance measurable rain:** 10%.

FRIDAY:

WEATHER: Partly cloudy. Possible Red Flag Conditions.
WIND (20 FT): Light & variable becoming east around 10 mph.
MAX TEMPERATURES: 85 to 88F.
MIN RH: 35%.
Chance of measurable rain 0%. **LAL:** 1
DISPERSION: 50 MAX **MIXING HEIGHT:** 5500 **TRANSPORT WIND:** East Southeast 15 to 20 mph.

GENERAL OUTLOOK SATURDAY THROUGH MONDAY: A drier air mass will be in place for Saturday, with RH values possibly dropping into the low 30%*s*. A cold front will begin to approach the area on Sunday, which will turn the wind to the south, with moisture moving back into the area, as well as a slight chance for showers. Sunday night may see fog development. A cold front is forecast to move through during the day, bringing a chance for showers and will turn the wind to the west.

WIND: Saturday: East southeast 8 to 12 mph. Sunday: South 8 to 12 mph, becoming southwest in the afternoon. Monday: Southwest 10 to 15, becoming west around 15 behind a cold front.

WEATHER/TEMPERATURE: Dry Saturday. Showers possible on Sunday and Monday. Highs in the mid 80's. Lows in the low 60's.

MIN RH: Saturday: 35% Sunday: 51% Monday: 51%

NIGHT TIME RECOVERY: 95% to 100% each night.



Sunrise Thursday: 6:58 am
 Sunset Thursday: 7:52 pm

Source: US Naval Observatory

Current Incident
 area RAWS

FIRE BEHAVIOR FORECAST

FORECAST NUMBER: #17	TYPE OF FIRE: Wildland
FIRE NAME: Cowbell	OPERATIONAL PERIOD: 04/20/2017
DATE ISSUED: 04/19/2017	TIME ISSUED: 1800
UNIT: Big Cypress Preserve	SIGNED: <i>Glen Fortenberry</i>

FUEL ASSUMPTIONS:

Primary fuels consist of grass, shrub, pine overstory with shrub palmetto understory and timber litter. Current fuel conditions are favorable for very active fire behavior within the grass and shrub fuels. Fire activity will greatly diminish in the wide cypress strands. The current drought conditions have led to both live and dead fuel moistures to reach levels of concern. Expect all fuels to burn readily, including those that appear green.

The fuel moisture for today is:

Calculated 1 hr fuel 8%, 10 hr fuel 10%, 100 hr fuel 15%, 1000 hr fuel 16%

Critical fire behavior thresholds: 1 HR Fuel Moisture <6%, RHs below 40% and a Dispersion Index greater than 60.

DISPERSION INDEX is 65 for today

WEATHER: Mostly sunny, becoming mostly cloudy in the afternoon. An isolated showers possible in the afternoon

WIND (20 FT): Light & variable becoming east at 8 to 12 mph in the late morning

MAX TEMPERATURES: 84 to 87.

MIN RH: 47%.

LAL: 1 Chance measurable rain: 20%

DISPERSION: 65 **MAX MIXING HEIGHT:** 5500 **TRANSPORT WINDS:** East around 15 mph in afternoon.

General Fire Behavior Forecast:

Fuels are still drought stricken and support high intensity fire behavior with ¼ + mile rate of spread and ¼+ mile spotting in the pine/ palmetto areas. Fire behavior will decrease for only a short time after any rain event.

Specific:

Cowbell: The fire will move through available fuels with backing, flanking and head fires as impacted by wind direction. If the fire gets established and produces a column it will continue to run until it reaches an unburnable fuel.(ex cypress strand). Continue to watch for reburn potential especially in pine stands that burned at least 7 or more days prior to today. Take time to make sure control lines are secure prior to the lower RH levels predicted for Friday and Saturday..

Initial Attack: Due to fuel conditions, high resistance to suppression efforts can be expected in all fuel types. Expect rapid rates of spread, with high intensities in pine/palmetto fuel type and anticipate spotting to challenge your control efforts. Heavy resistance can be expected on any new starts in all fuel types

PREDICTIONS FOR MOST ACTIVE TIME OF PEAK BURNING PERIOD USING WEATHER FROM INCIDENT IMET

Fuel Model	Fire Behavior
Grass	ROS 20 to 40 ch/hr, FL 4-7 ft.
Shrub	ROS 10 to 20 ch/hr, FL 6-9 ft
Timber Litter (Cypress)	ROS 2 to 5 ch/hr, FL 2-3 ft
Spotting	. 25miles
Probability of Ignition	40% in all models

AIR OPERATIONS: No impacts anticipated for air ops. The inversion lifts by 0900.

FIRE BEHAVIOR SAFETY: Keep current with weather observations. Fuels conditions are such that fire behavior can change quickly as weather changes.

HEALTH AND SAFETY MESSAGE

SAFETY is an ATTITUDE

: Cowbell Fire

DATE: 04/20/2017 **TIME:** Day Shift

Major Hazards and Risks:

- ENVIRONMENTAL
- HAZARD TREES
- DRIVING & TRAFFIC
- COMMUNICATIONS
- FATIGUE

It's getting warmer and it is early in the fire season. Pace yourself, drink plenty of fluids and be able to recognize the signs/symptoms of heat related injuries. Drink 4 times the amount of water to Gatorade type drinks.

The fire is in an area that has previously burned creating a lot of snags. Gusts of wind and rotor wash can bring down trees with weakened root systems throughout the fire area. Use extreme caution and use lookouts when working around this hazard.

We are driving a lot of miles on major highways. Non-fire traffic won't pay sufficient attention to us so drive defensively at all times.

Fatigue starts to affect an individual after only a few days. Follow the work/rest guidelines and mitigate longer shifts as soon as possible.



18. TAKING A NAP NEAR THE FIRELINE

TEN STANDARD FIRE ORDERS

- Fight fire aggressively, having provided for safety first.
- Base all actions on current and expected behavior of the fire.
- Keep informed on fire weather conditions and forecasts.
- Give clear instructions and insure they are understood.
- Know what the fire is doing at all times.
- Maintain prompt communications with your forces, your supervisor and adjoining resources.
- Identify escape routes and safety zones, and make them known.
- Post lookouts when there is possible danger.
- Maintain control of your forces at all times.
- Stay alert, Keep calm, Think clearly, and Act decisively.

Division/Group Assignment List (ICS 204 WF)

1. Incident Name:			3.			
COWBELL			Branch:		Division/Group: A / D	
2. Operational Period: DAY						
Date/Time From: 04/20/2017 0800 THU		Date/Time To: 04/20/2017 2000 THU				
4. Operations Personnel						
OPERATIONS CHIEF		PAUL REYNOLDS		DEPUTY OPERATIONS CHIEF		DWIGHT SNOW
PLANNING OPERATIONS		MICHAEL HEARD		STRATEGIC OPERATIONS		JAMES DURRWACHTER
AIR OPERATIONS BRANCH DIRECTOR		JOHN BRAGG MIKE MOWERY (T)		DIVISION / GROUP SUPERVISOR		KERRY CLARK
5. Resources Assigned this Period						
Strike Team / Task Force / Resource Designator		LWD	Leader	Number Persons	Drop Off PT./Time	Pick Up PT./Time
HCM MODULE - SUPPRESSION - BIFZ #2 O-106		05/01	BRETT MOREFIELD	10	ICP/0800	ICP/2000
EMTF O-196		05/01	BRANDON LITTLE	1	ICP/0800	ICP/2000
EMPF O-36		04/25	FRANK ABEL	1	ICP/0800	ICP/2000
6. Control Operations/Work Assignments:						
<p>Task:</p> <ul style="list-style-type: none"> • Patrol and mop up 25 ft. from control line • Monitor and patrol by air <p>Purpose:</p> <ul style="list-style-type: none"> • To keep fire confined and contained west of ADD 17/ADD 14 on east flank of fire • To protect structures • To alert FHP of potential impact to I-75 • Keep fire contained north of I-75 <p>End State:</p> <ul style="list-style-type: none"> • Control fire perimeter west of ADD 17/ADD 14 to eliminate threat to Sanctuary area structures • Minimize risk to public traveling on I-75 • Confine fire perimeter to reduce threats to resource values at risk 						
7. Special Instructions:						
Establish and maintain LCES during operational period. Do not engage in fire suppression activities along I-75 shoulders unless traffic hazards have been mitigated						
8. Division/Group Communication Summary						
Function	Channel	RX Frequency N/W	RX Tone/NAC	TX Frequency N/W	TX Tone/NAC	Mode
COMMAND	12	166.6125		168.4000	110.9	A
COMMAND	13	168.7000		170.9750	110.9	A
TACTICAL	4	168.6000		168.6000		A
AIR TO GROUND	10	168.3250		168.3250		A
9. Prepared By (Resource Unit Leader)			Approved By (Planning Section Chief)		Date	Time
SUE WILDER, STEVE WELLS RESL			TERRY PIERCE / DAVE DOBBS PSC1		04/19/2017	1900

Division/Group Assignment List (ICS 204 WF)

1. Incident Name:			3.			
COWBELL			Branch:		Division/Group: G	
2. Operational Period: DAY						
Date/Time From: 04/20/2017 0800 THU		Date/Time To: 04/20/2017 2000 THU				
4. Operations Personnel						
OPERATIONS CHIEF		PAUL REYNOLDS		DEPUTY OPERATIONS CHIEF		DWIGHT SNOW
PLANNING OPERATIONS		MICHAEL HEARD		STRATEGIC OPERATIONS		JIM DURRWACHTER
AIR OPERATIONS BRANCH DIRECTOR		JOHN BRAGG MIKE MOWERY (T)		DIVISION/GROUP SUPERVISOR		VICTOR DOIG
5. Resources Assigned this Period						
Strike Team / Task Force / Resource Designator		LWD	Leader	Number Persons	Drop Off PT./Time	Pick Up PT./Time
TFLD O-172		04/29	ALAN O KIRBY	1	ICP/0800	ICP/2000
TFLD O-173		04/29	JARED NOBLES	1	ICP/0800	ICP/2000
TFLD O-178		04/29	GEORGE ALLALUNIS	1	ICP/0800	ICP/2000
HEQB O-124		04/22	JESSE BARR	1	ICP/0800	ICP/2000
ENG6 ENGINE - T6 - FIRE TRAX LLC - B65014 - 610 E-86		04/26	CARLOS GUTIERREZ	3	ICP/0800	ICP/2000
ENG6 ENGINE - T6 - WILDLANDS FIRE SERVICE INC - A57267 - 8 E-87		04/26	BRIAN TERRY	3	ICP/0800	ICP/2000
ENG6 ENGINE - T6 - WILDLANDS FIRE SERVICE INC - 339712 - 9 E-121		04/25	DAVID HOGREFE	3	ICP/0800	ICP/2000
SLIMER SUPPRESSION BUGGY E-80		04/25	MATT MATEO	3	ICP/0800	ICP/2000
BICY SUPPRESSION BUGGY 3 E-65		04/25	JOSH MANLEY	1	ICP/0800	ICP/2000
DUECE BUGGY IA 607 E-89		04/23	JT SOHR	3	ICP/0800	ICP/2000
MAST MASTICATOR - BOOM MOUNTED, TYPE 3 - T 1736 JOHN DEERE E-6		05/12	CARLOS DE LA CRUZ	1	ICP/0800	ICP/2000
MAST GEO-BOY E-83		04/24	ROB SHACKLEFORD	1	ICP/0800	ICP/2000
HEQB O-201		05/02	DAVID POOLE	1	ICP/0800	ICP/2000
8. Division/Group Communication Summary						
Function	Channel	RX Frequency N/W	RX Tone/NAC	TX Frequency N/W	TX Tone/NAC	Mode
COMMAND	13	168.7000		170.9750	110.9	A
COMMAND	15	173.0375		167.3250	110.9	A
TACTICAL	5	168.2500		168.2500		A
AIR TO GROUND	10	168.3250		168.3250		A
9. Prepared By (Resource Unit Leader)			Approved By (Planning Section Chief)		Date	Time
SUE WILDER/STEVE WELLS			TERRY PIERCE/DAVE DOBBS		04/19/2017	1900

Division/Group Assignment List (ICS 204 WF)

1. Incident Name:			3.			
COWBELL			Branch:		Division/Group: G	
2. Operational Period: DAY						
Date/Time From: 04/20/2017 0800 THU		Date/Time To: 04/20/2017 2000 THU				
4. Operations Personnel						
OPERATIONS CHIEF		PAUL REYNOLDS		DEPUTY OPERATIONS CHIEF		DWIGHT SNOW
PLANNING OPERATIONS		MICHAEL HEARD		STRATEGIC OPERATIONS		JIM DURRWACHTER
AIR OPERATIONS BRANCH DIRECTOR		JOHN BRAGG MIKE MOWERY (T)		DIVISION/GROUP SUPERVISOR		VICTOR DOIG
5. Resources Assigned this Period						
Strike Team / Task Force / Resource Designator		LWD	Leader	Number Persons	Drop Off PT./Time	Pick Up PT./Time
SOFR O-193		05/02	ROBERT BERTOLINA	1	ICP/0800	ICP/2000
READ O-154		04/25	JOANNE YOUNG	1	ICP/0800	ICP/2000
EMTF O-17		04/21	JIM STOUT	1	ICP/0800	ICP/2000
EMPF O-198		05/01	ADAM WHITE	1	ICP/0800	ICP/2000
6. Control Operations/Work Assignments:						
<p>Task:</p> <ul style="list-style-type: none"> • Patrol and mop up 25 ft. from control line. • Masticate Perocchi Grade to create alternate line. • Continue monitoring and using aerial support to contain slop overs on Nobles Grades. • Monitor Kissimmee Billy Strand using aerial support. <p>Purpose:</p> <ul style="list-style-type: none"> • To keep fire contained east of Kissimmee Billy Strand. To establish a contingency line and alternate line. <p>End State:</p> <ul style="list-style-type: none"> • Confine fire perimeter to reduce threats to resource values at risk. 						
7. Special Instructions:						
Establish and maintain LCES during operational period. Coordinate with Field OPS in the event swing shift resources are required. Utilize MIST tactics as outlined in Fire Operations Guide for BICY. Follow tracked vehicle requirement restrictions.						
8. Division/Group Communication Summary						
Function	Channel	RX Frequency N/W	RX Tone/NAC	TX Frequency N/W	TX Tone/NAC	Mode
COMMAND	13	168.7000		170.9750	110.9	A
COMMAND	15	173.0375		167.3250	110.9	A
TACTICAL	5	168.2500		168.2500		A
AIR TO GROUND	10	168.3250		168.3250		A
9. Prepared By (Resource Unit Leader)			Approved By (Planning Section Chief)		Date	Time
SUE WILDER/STEVE WELLS			TERRY PIERCE/DAVE DOBBS		04/19/2017	1900

Division/Group Assignment List (ICS 204 WF)

1. Incident Name:			3.			
COWBELL			Branch:		Division/Group: IA DEEP LAKE STAGING	
2. Operational Period: DAY						
Date/Time From: 04/20/2017 0800 THU		Date/Time To: 04/20/2017 2000 THU				
4. Operations Personnel						
OPERATIONS CHIEF		PAUL REYNOLDS		DEPUTY OPERATIONS CHIEF		DWIGHT SNOW
STRATEGIC OPERATIONS		JAMES DURRWACHTER		PLANNING OPERATIONS		MICHAEL HEARD
AIR OPERATIONS BRANCH DIRECTOR		JOHN BRAGG MIKE MOWERY (T)		DIVISION / GROUP SUPERVISOR		KRIS WILSON
5. Resources Assigned this Period						
Strike Team / Task Force / Resource Designator		LWD	Leader	Number Persons	Drop Off PT./Time	Pick Up PT./Time
TFLD O-144		04/24	WILLARD R WORLEY	1	ICP/0800	ICP/2000
TFLD O-177		04/30	DAVID MOORE (T)	1	ICP/0800	ICP/2000
HC2I CREW - T2IA - PR MA #3 C-7 MOD A		04/27	ROBERTO MARTINEZ	10	ICP/0800	ICP/2000
ENG6 ENGINE - T6 - ATTACK-ONE FIRE MANAGEMENT SERVICES INC E-58		04/26	KEVIN CARTER	2	ICP/0800	ICP/2000
ENG6 ENGINE - T6 - CSP 661 E-59		04/20	JASON J JOHNSON	2	ICP/0800	ICP/2000
**ENG6 ENGINE - T6 - 31 E-7		04/29	JONATHAN O'GORMAN	2	ICP/0800	ICP/2000
BICY SUPPRESSION BUGGY #6 O-68		05/02	SAM ASHBAUGH	1	ICP/0800	ICP/2000
BICY SWAMP BUGGY #2 E-64		04/22	CHRIS DARGAN	1	ICP/0800	ICP/2000
SOFR O-135		04/24	DONALD FOCO	1	ICP/0800	ICP/2000
EMPF O-199		05/01	TOM CHRISTIAN	1	ICP/0800	ICP/2000
EMTF		05/02	BRAD BURNS	1	ICP/0800	ICP/2000
8. Division/Group Communication Summary						
Function	Channel	RX Frequency N/W	RX Tone/NAC	TX Frequency N/W	TX Tone/NAC	Mode
BICY RPTR	1	172.4250	1035	170.1000	1035	D
BICY RPTR	2	172.4250	1035	171.6250	1035	D
PANTHER RPTR	7	164.6250	1188	163.1500	1188	D
TACTICAL	9	166.8250		166.8250		A
AIR TO GROUND	6	169.1125		169.1125		A
9. Prepared By (Resource Unit Leader)			Approved By (Planning Section Chief)		Date	Time
SUE WILDER/ STEVE WELLS RESL			TERRY PIERCE/ DAVE DOBBS PSC1		04/19/2017	1900

Division/Group Assignment List (ICS 204 WF)

1. Incident Name:			3.			
COWBELL			Branch:		Division/Group: IA DEEP LAKE STAGING	
2. Operational Period: DAY						
Date/Time From: 04/20/2017 0800 THU		Date/Time To: 04/20/2017 2000 THU				
4. Operations Personnel						
OPERATIONS CHIEF		PAUL REYNOLDS		DEPUTY OPERATIONS CHIEF		DWIGHT SNOW
STRATEGIC OPERATIONS		JAMES DURRWACHTER		PLANNING OPERATIONS		MICHAEL HEARD
AIR OPERATIONS BRANCH DIRECTOR		JOHN BRAGG MIKE MOWERY (T)		DIVISION / GROUP SUPERVISOR		KRIS WILSON
5. Resources Assigned this Period						
Strike Team / Task Force / Resource Designator		LWD	Leader	Number Persons	Drop Off PT./Time	Pick Up PT./Time
6. Control Operations/Work Assignments:						
<p>Task:</p> <ul style="list-style-type: none"> Coordinate with BICY duty officer for notification of newly reported ignitions. Coordinate initial attack action with assigned aviation and /or ground assets Determine IA resource pre-positioning needs across BICY and FPWR <p>Purpose:</p> <ul style="list-style-type: none"> Ensure communications with FL Hwy Patrol regarding smoke on I-75 and Hwy 41. Ensure timely response on any IA within BICY and FPWR <p>End State:</p> <ul style="list-style-type: none"> Protect human life. Minimize environment damage to protect habitat of threatened and endangered species. Minimize damage to public and private property 						
7. Special Instructions:						
<p>**Resources identified for extended staffing as needed. Coordinate with Field OPS to determine need. Follow tracked vehicle requirement restrictions. Establish and maintain LCES during operational period. Utilize MIST tactics as outlined in Fire Operations Guide for BICY. All initial attack will go through BICY Fire Dispatch Center. Incident within an Incident will go through Cowbell communications.</p>						
8. Division/Group Communication Summary						
Function	Channel	RX Frequency N/W	RX Tone/NAC	TX Frequency N/W	TX Tone/NAC	Mode
BICY RPTR	1	172.4250	1035	170.1000	1035	D
BICY RPTR	2	172.4250	1035	171.6250	1035	D
PANTHER RPTR	7	164.6250	1188	163.1500	1188	D
TACTICAL	9	166.8250		166.8250		A
AIR TO GROUND	6	169.1125		169.1125		A
9. Prepared By (Resource Unit Leader)			Approved By (Planning Section Chief)		Date	Time
SUE WILDER/ STEVE WELLS RESL			TERRY PIERCE/ DAVE DOBBS PSC1		04/19/2017	1900

Division/Group Assignment List (ICS 204 WF)

1. Incident Name:			3.			
COWBELL			Branch:		Division/Group: IA OASIS STAGING	
2. Operational Period: DAY						
Date/Time From: 04/20/2017 0800 THU		Date/Time To: 04/20/2017 2000 THU				
4. Operations Personnel						
OPERATIONS CHIEF		PAUL REYNOLDS		DEPUTY OPERATIONS CHIEF		DWIGHT SNOW
STRATEGIC OPERATIONS		JAMES DURRWACHTER		PLANNING OPERATIONS		MICHAEL HEARD
AIR OPERATIONS BRANCH DIRECTOR		JOHN BRAGG MIKE MOWERY (T)		DIVISION / GROUP SUPERVISOR		KRIS WILSON
5. Resources Assigned this Period						
Strike Team / Task Force / Resource Designator		LWD	Leader	Number Persons	Drop Off PT./Time	Pick Up PT./Time
**TFLD O-60		04/26	HAROLD L KIBBE	1	ICP/0800	ICP/2000
**ENG6 ENGINE - T6 - 461- NPS E-57		04/26	GUS SCHAEFER	2	ICP/0800	ICP/2000
HC2I CREW - T2IA - PR MA #3 C-7 MOD B		04/27	LOUIS SAEZ	10	ICP/0800	ICP/2000
ENG6 ENGINE - T6 - WILDLANDS FIRE SERVICE INC - C93328 - 5 E-122		04/25	CHAD ANDERSON	3	ICP/0800	ICP/2000
BICY SUPPRESSION BUGGY #1 E-129		04/23	JAMES RAY	1	ICP/0800	ICP/2000
ENG6 ENGINE - T6 - CO-PSF - 7-1 E-140		04/27	KYLE A AVESING	3	ICP/0800	ICP/2000
SOFR O-54		04/26	KRIS CRODDY	1	ICP/0800	ICP/2000
EMTF O-197		05/01	CHRIS SANTOPIETRO (T)	1	ICP/0800	ICP/2000
EMTF O-18		04/22	BOB BRUINGTON	1	ICP/0800	ICP/2000
6. Control Operations/Work Assignments:						
Task:						
<ul style="list-style-type: none"> • Coordinate with BICY duty officer for notification of newly reported ignitions. Coordinate initial attack action with assigned aviation and /or ground assets • Determine IA resource pre-positioning needs across BICY and FPWR 						
Purpose:						
<ul style="list-style-type: none"> • Ensure communications with FL Hwy Patrol regarding smoke on I-75 and Hwy 41. Ensure timely response on any IA within BICY and FPWR 						
End State:						
<ul style="list-style-type: none"> • Protect human life. Minimize environment damage to protect habitat of threatened and endangered species. Minimize damage to public and private property 						
7. Special Instructions:						
8. Division/Group Communication Summary						
Function	Channel	RX Frequency N/W	RX Tone/NAC	TX Frequency N/W	TX Tone/NAC	Mode
BICY RPTR	1	172.4250	1035	170.1000	1035	D
BICY RPTR	2	172.4250	1035	171.6250	1035	D
PANTHER RPTR	7	164.6250	1188	163.1500	1188	D
TACTICAL	9	166.8250		166.8250		A
AIR TO GROUND	6	169.1125		169.1125		A
9. Prepared By (Resource Unit Leader)			Approved By (Planning Section Chief)		Date	Time
SUE WILDER/STEVE WELLS			TERRY PIERCE/DAVE DOBBS		04/19/2017	1900

Division/Group Assignment List (ICS 204 WF)

1. Incident Name:			3.			
COWBELL			Branch:		Division/Group: IA OASIS STAGING	
2. Operational Period: DAY						
Date/Time From: 04/20/2017 0800 THU		Date/Time To: 04/20/2017 2000 THU				
4. Operations Personnel						
OPERATIONS CHIEF		PAUL REYNOLDS		DEPUTY OPERATIONS CHIEF		DWIGHT SNOW
STRATEGIC OPERATIONS		JAMES DURRWACHTER		PLANNING OPERATIONS		MICHAEL HEARD
AIR OPERATIONS BRANCH DIRECTOR		JOHN BRAGG MIKE MOWERY (T)		DIVISION / GROUP SUPERVISOR		KRIS WILSON
7. Special Instructions:						
<p>**Resources identified for extended staffing as needed. Coordinate with Field OPS to determine need. Follow tracked vehicle requirement restrictions. Establish and maintain LCES during operational period. Utilize MIST tactics as outlined in Fire Operations Guide for BICY. All initial attack will go through BICY Fire Dispatch Center. Incident within an Incident will go through Cowbell communications.</p>						
8. Division/Group Communication Summary						
Function	Channel	RX Frequency N/W	RX Tone/NAC	TX Frequency N/W	TX Tone/NAC	Mode
BICY RPTR	1	172.4250	1035	170.1000	1035	D
BICY RPTR	2	172.4250	1035	171.6250	1035	D
PANTHER RPTR	7	164.6250	1188	163.1500	1188	D
TACTICAL	9	166.8250		166.8250		A
AIR TO GROUND	6	169.1125		169.1125		A
9. Prepared By (Resource Unit Leader)			Approved By (Planning Section Chief)		Date	Time
SUE WILDER/STEVE WELLS			TERRY PIERCE/DAVE DOBBS		04/19/2017	1900

Division/Group Assignment List (ICS 204 WF)

1. Incident Name:			3.				
COWBELL			Branch:		Division/Group: K		
2. Operational Period: DAY							
Date/Time From: 04/20/2017 0800 THU		Date/Time To: 04/20/2017 2000 THU					
4. Operations Personnel							
OPERATIONS CHIEF		PAUL REYNOLDS		DEPUTY OPERATIONS CHIEF		DWIGHT SNOW	
PLANNING OPERATIONS CHIEF		MICHAEL HEARD		STRATEGIC OPERATIONS		JIM DURRWACHTER	
AIR ATTACK SUPERVISOR				DIVISION/GROUP SUPERVISOR		TIM NUTLEY	
5. Resources Assigned this Period							
Strike Team / Task Force / Resource Designator		LWD	Leader		Number Persons	Drop Off PT./Time	Pick Up PT./Time
UNSTAFFED							
6. Control Operations/Work Assignments:							
<p>Task:</p> <ul style="list-style-type: none"> • Coordinate with Florida Forestry Service representative for proposed line construction on private land. • Keep fire contained south of BICY boundary and private lands to minimize impacts. <p>Purpose:</p> <ul style="list-style-type: none"> • To protect structures on private lands. <p>End State:</p> <ul style="list-style-type: none"> • Confine fire perimeter to reduce impacts to private land ownership. 							
7. Special Instructions:							
<p>Establish and maintain LCES during operational period. Coordinate with Field OPS in the event swing shift resources are required. Follow tracked vehicle requirements restriction. Utilize MIST tactics as outlined in Fire Operations Guide for BICY.</p>							
8. Division/Group Communication Summary							
Function	Channel	RX Frequency N/W	RX Tone/NAC	TX Frequency N/W	TX Tone/NAC	Mode	
COMMAND	12	166.6125		168.4000	110.9	A	
COMMAND	13	168.7000		170.9750	110.9	A	
TACTICAL	8	166.7500		166.7500		A	
AIR TO GROUND	10	168.3250		168.3250		A	
9. Prepared By (Resource Unit Leader)			Approved By (Planning Section Chief)		Date	Time	
SUE WILDER/STEVE WELLS			TERRY PIERCE/DAVE DOBBS		04/19/2017	1900	

Division/Group Assignment List (ICS 204 WF)

1. Incident Name:			3.			
COWBELL			Branch:		Division/Group: PARLIAMENT / MISC FIRE	
2. Operational Period: DAY						
Date/Time From: 04/20/2017 0800 THU		Date/Time To: 04/20/2017 2000 THU				
4. Operations Personnel						
OPERATIONS CHIEF		PAUL REYNOLDS		DEPUTY OPERATIONS CHIEF		DWIGHT SNOW
PLANNING OPERATIONS		MICHAEL HEARD		STRATEGIC OPERATIONS		JIM DURRWACHTER
AIR OPERATIONS BRANCH DIRECTOR				DIVISION / GROUP SUPERVISOR		
5. Resources Assigned this Period						
Strike Team / Task Force / Resource Designator		LWD	Leader	Number Persons	Drop Off PT./Time	Pick Up PT./Time
UNSTAFFED						
6. Control Operations/Work Assignments:						
<p>Task:</p> <ul style="list-style-type: none"> • Patrol and monitor fires on BICY and FPWR with aviation and ground assets as directed by lead OSC commensurate with values at risk • Monitor fires for further suppression management action <p>Purpose:</p> <ul style="list-style-type: none"> • Assure suppression action taken limits environmental impact, consistent with MIST tactics <p>End State:</p> <ul style="list-style-type: none"> • Protect human life • Minimize damage to public and private property • Minimize environmental damage to protect habitat of threatened and endangered species 						
7. Special Instructions:						
<p>Follow tracked vehicle requirement restrictions. Establish and maintain LCES during operational period. Utilize MIST tactics as outlined in Fire Operations Guide for BICY.</p>						
8. Division/Group Communication Summary						
Function	Channel	RX Frequency N/W	RX Tone/NAC	TX Frequency N/W	TX Tone/NAC	Mode
BICY RPTR	2	172.4250	1035	171.6250	1035	D
TACTICAL	11	166.7250	0659	166.7250	0659	D
AIR TO GROUND	10	168.3250		168.3250		A
9. Prepared By (Resource Unit Leader)			Approved By (Planning Section Chief)		Date	Time
SUE WILDER/STEVE WELLS			TERRY PIERCE/DAVE DOBBS		04/19/2017	1900

Division/Group Assignment List (ICS 204 WF)

1. Incident Name:			3.			
COWBELL			Branch:		Division/Group: STRUCTURE PROTECTION	
2. Operational Period: DAY						
Date/Time From: 04/20/2017 0800 THU		Date/Time To: 04/20/2017 2000 THU				
4. Operations Personnel						
OPERATIONS CHIEF		PAUL REYNOLDS		DEPUTY OPERATIONS CHIEF		DWIGHT SNOW
PLANNING OPERATIONS		MICHAEL HEARD		STRATEGIC OPERATIONS		JIM DURRWACHTER
AIR OPERATIONS BRANCH DIRECTOR				DIVISION/GROUP SUPERVISOR		SHAWN NAGLE
5. Resources Assigned this Period						
Strike Team / Task Force / Resource Designator		LWD	Leader	Number Persons	Drop Off PT./Time	Pick Up PT./Time
UNSTAFFED						
6. Control Operations/Work Assignments:						
<p>Task:</p> <ul style="list-style-type: none"> Review structure protection plan. Assess structure protection needs west of the Plains Trail (alternate line) and west of the Perocchi-Bear Island Grade (Contingency line). <p>Purpose:</p> <ul style="list-style-type: none"> Structure preparation around Baker Cabin. <p>End State:</p> <ul style="list-style-type: none"> Protect human life. <p>Minimize damage to public and private property and infrastructure.</p>						
7. Special Instructions:						
Resources identified for swing shift if needed. Coordinate with Field OPS to determine need. Follow tracked vehicle requirement restrictions. Establish and maintain LCES during operational period. Utilize MIST tactics as outlined in Fire Operations Guide for BICY.						
8. Division/Group Communication Summary						
Function	Channel	RX Frequency N/W	RX Tone/NAC	TX Frequency N/W	TX Tone/NAC	Mode
BICY RPTR	1	172.4250	1035	170.1000	1035	D
BICY RPTR	2	172.4250	1035	171.6250	1035	D
PANTHER RPTR	7	164.6250	1188	163.1500	1188	D
TACTICAL	9	166.8250		166.8250		A
AIR TO GROUND	6	169.1125		169.1125		A
9. Prepared By (Resource Unit Leader)			Approved By (Planning Section Chief)		Date	Time
			SUE WILDER/STEVE WELLS		04/19/2017	1900

Division/Group Assignment List (ICS 204 WF)

1. Incident Name:			3.			
COWBELL			Branch:		Division/Group: Z	
2. Operational Period: DAY						
Date/Time From: 04/20/2017 0800 THU		Date/Time To: 04/20/2017 2000 THU				
4. Operations Personnel						
OPERATIONS CHIEF		PAUL REYNOLDS		DEPUTY OPERATIONS CHIEF		DWIGHT SNOW
PLANNING OPERATIONS		MICHAEL HEARD		STRATEGIC OPERATIONS		JIM DURRWACHTER
AIR OPERATIONS BRANCH DIRECTOR		JOHN BRAGG MIKE MOWERY (T)		DIVISION / GROUP SUPERVISOR		MICAH JOHNSON
5. Resources Assigned this Period						
Strike Team / Task Force / Resource Designator		LWD	Leader	Number Persons	Drop Off PT./Time	Pick Up PT./Time
HCM MODULE - SUPPRESSION - NPS #1 O-21		04/23	JOSH HAMPTON	6	ICP/0800	ICP/2000
ENG3 ENGINE - T3 - CA-SHF - 51 E-99		04/23	MIKE ANDERSON	5	ICP/0800	ICP/2000
ENG3 ENGINE - T3 - CA-SHF - 321 E-98		04/23	KENNETH VAUGH	5	ICP/0800	ICP/2000
ENG3 ENGINE - T3 - 335 E-100		04/23	BRYAN REDDISH	5	ICP/0800	ICP/2000
SEMINOLE SUPPRESSION BUGGY E-60		04/30	MIKE LIGHTSEY	2	ICP/0800	ICP/2000
SEMINOLE SUPPRESSION BUGGY E-139		04/26	ORLANDO CLEVELAND	1	ICP/0800	ICP/2000
TRANSPORT BUGGY E-38		04/25	CLINT WEEKS	1	ICP/0800	ICP/2000
TRANSPORT BUGGY E-39		04/25	CAPTAIN STEVE-CLINTON WEAKS	1	ICP/0800	ICP/2000
TRANSPORT BUGGY E-40		04/25	BOBBY WEEKS	1	ICP/0800	ICP/2000
TRANSPORT BUGGY E-41		04/25	VICTOR ROBINSON	1	ICP/0800	ICP/2000
READ O-154		04/25	JOANNE YOUNG	1	ICP/0800	ICP/2000
EMTF O-195		04/21	GENE-PAUL MATSON	1	ICP/0800	ICP/2000
SOFR O-194		05/02	MARK HELM	1	ICP/0800	ICP/2000
SOFR (T) O-76		04/28	JUSTIN PHIPPEN	1	ICP/0800	ICP/2000
TFLD O-72		04/26	CHRIS RICHARDS	1	ICP/0800	ICP/2000
8. Division/Group Communication Summary						
Function	Channel	RX Frequency N/W	RX Tone/NAC	TX Frequency N/W	TX Tone/NAC	Mode
COMMAND	12	166.6125		168.4000	110.9	A
COMMAND	13	168.7000		170.9750	110.9	A
TACTICAL	8	166.7500		166.7500		A
AIR TO GROUND	10	168.3250		168.3250		A
9. Prepared By (Resource Unit Leader)			Approved By (Planning Section Chief)		Date	Time
SUE WILDER/STEVE WELLS			TERRY PIERCE/DAVE DOBBS		04/19/2017	1900

Division/Group Assignment List (ICS 204 WF)

1. Incident Name:			3.			
COWBELL			Branch:		Division/Group: Z	
2. Operational Period: DAY						
Date/Time From: 04/20/2017 0800 THU		Date/Time To: 04/20/2017 2000 THU				
4. Operations Personnel						
OPERATIONS CHIEF		PAUL REYNOLDS		DEPUTY OPERATIONS CHIEF		DWIGHT SNOW
PLANNING OPERATIONS		MICHAEL HEARD		STRATEGIC OPERATIONS		JIM DURRWACHTER
AIR OPERATIONS BRANCH DIRECTOR		JOHN BRAGG MIKE MOWERY (T)		DIVISION / GROUP SUPERVISOR		MICAH JOHNSON
5. Resources Assigned this Period						
Strike Team / Task Force / Resource Designator		LWD	Leader	Number Persons	Drop Off PT./Time	Pick Up PT./Time
6. Control Operations/Work Assignments:						
<p>Task:</p> <ul style="list-style-type: none"> Patrol and conduct mop up 25 ft. from control line <p>Purpose:</p> <ul style="list-style-type: none"> To keep fire south of Preserve Boundary and west of ADD 17 to protect private land with structures <p>End State:</p> <ul style="list-style-type: none"> Control fire to eliminate threats to Seminole Tribe of Florida and private property 						
7. Special Instructions:						
Establish and maintain LCES during operational period. Coordinate with Field OPS in the event swing shift resources are required. Follow tracked vehicle requirements restriction. Utilize MIST tactics as outlined in Fire Operations Guide for BICY.						
8. Division/Group Communication Summary						
Function	Channel	RX Frequency N/W	RX Tone/NAC	TX Frequency N/W	TX Tone/NAC	Mode
COMMAND	12	166.6125		168.4000	110.9	A
COMMAND	13	168.7000		170.9750	110.9	A
TACTICAL	8	166.7500		166.7500		A
AIR TO GROUND	10	168.3250		168.3250		A
9. Prepared By (Resource Unit Leader)			Approved By (Planning Section Chief)		Date	Time
SUE WILDER/STEVE WELLS			TERRY PIERCE/DAVE DOBBS		04/19/2017	1900

AIR OPERATIONS SUMMARY

OPERATIONAL PERIOD DATE: 04-20-2017

0800-2000

1. INCIDENT NAME: Cowbell	2. PREPARED BY: John Bragg PREPARED DATE/TIME: 04/19/2017 1800	3. Sunrise: 0658 Sunset: 1951
<p>4. REMARKS (Safety Notes, Hazards, Air Operations Special Equipment, etc.): Medivac Aircraft: 6HX MTR- Located along state road 29. Fire Dispatch gets MTR activity every morning Do not over fly structures with external load missions. All aircraft should use strobes and running lights in smoky conditions. Hazards: Snags, non-incident aircraft, and winds. Contract helicopter working special use permit in North Central portion of BICY. Area identified on pilot briefing board. ATGS has air to air communications. Cease all operations at sunset</p>		<p>5. Squawk 1255 (A-20) TFR—7/7786 ZMA FL, Airspace 25 nm NE of Ochopee SFC 3000ft. Contact 118.825 NOTAM – 04/054 – Airspace firefighting aircraft 5nm of (9FL7) SFC 2000ft.</p>

6. PERSONNEL	Phone	7. FREQUENCIES	AM	FM	8. FIXED WING	FAA#/Base
AOBD: John Bragg AOBD-T Mike Mowery ASGS: Matt Clinton	423-483-2798 870-615-0287 208-634-9414	Air/Air Rotor (A-5) Air/Air Fixed Wing	123.575 118.825		Air Attack- Air Attack	197GB (A-18)—Aero Commander MKY 4566M (A-10) --Baron MKY
ATGS: Steve Little ATGS: Jay Lindgren ATGS (T): Trevor Pollock	828-778-2077 406-461-1652 435-592-4919	Air/Ground Cowbell Air/Ground IA Air/Ground Aerial Ignition		168.3250 RX/TX (A) 169.1125 RX/TX (A) 167.9500 RX/TX (A)	T-801 (A-3) T-493 (A-21)	Seat --IMM, Start 0900 Seat —IMM, Start 0900
<u>Oasis Helibase (9FL7)</u> HEB1 Mark Oetzmann HEB1(T) Jay Thatcher <u>Immokalee Airport</u> SEMG Jack Benzilio HMGB—Tracy Elliot HMGB – Brian Butler	239-695-0278 208-315-5030 970-903-7922 970-799-1232 303-910-7619 970-946-8068	Flight Following (BICY)		169.7250 RX N1514 163.3875 TX N1738		
Big Cypress Fire Dispatch	239-695-9280 x 104	Air/Guard Deck		168.6250 RX/TX Tone 110.9 166.7750		

9. HELICOPTERS (Use Additional Sheets As Necessary)

FAA N# or Designator	TY	MAKE/MODEL	BASE	START	REMARKS	FAA N# or Designator	TY	MAKE/MODEL	BASE	START	REMARKS
						1KA (A-7)	1	K-MAX	Oasis	0900	Bucket
28HX A-17)	2	Bell 205	Oasis	0900	Crew/Bucket	612CK (A-8)	1	S-61	IMM	0900	Tanked
16HX (A-9)	2	Bell 205	Oasis	0900	Crew/Bucket	718 (A-16)	1	CH-54	IMM	0900	Tanked
0HH	3	Bell 206B3	Oasis	0800	Map/Recon						

10. TASK/MISSION/ASSIGNMENT (Use ICS-220a if additional space needed; Type/Function includes: Air Tactical, Retardant, Recon, Personnel Transport, Water Dropping, etc.)

TYPE/FUNCTION	NAME OF PERSONNEL OR CARGO (if applicable) OR INSTRUCTIONS FOR TACTICAL AIRCRAFT	MISSION START	FLY FROM	FLY TO
Mapping/Reconnaissance	As Requested	0930		
Water Drops	As Requested	0930		

Zone Group	Ch #	Function	Assignment	RX Freq	RX Tone/NAC	TX Freq	TX Tone/NAC	Mode (A,D, or M)	Remarks	
	1	CARNS RPT	Initial Attack	172.4250	1035	170.1000	1035	D	BICY Preserve RPTR	
	2	OASIS RPT	IA/Parliament	172.4250	1035	171.6250	1035	D	BICY Preserve RPTR	
	3	BCY LCL	Structure/Div S	166.7750	No Tone	166.7750	No Tone	A		
	4	BICY TAC 1	Division A /D	168.6000	No Tone	168.6000	No Tone	A		
	5	BICY LCL 2	DIVISION G	168.2500	No Tone	168.2500	No Tone	A		
	6	A/G 59	Initial Attack	169.1125	No Tone	169.1125	No Tone	A		
	7	Panther RPT	Initial Attack	164.6250	1188	163.1500	1188	D	Panther Refuge RPTR	
	8	PANTHER TAC 1	DIVISION Z/K	166.7500	No Tone	166.7500	No Tone	A		
	9	PANTHER TAC 2	Initial Attack	166.8250	No Tone	166.8250	No Tone	A		
	10	A/G 85	ALL DIVISIONS	168.3250	No Tone	168.3250	No Tone	A		
	11	Everglades TAC 1	Parliament Misc.	166.7250	0659	166.7250	0659	D		
	12	CMD 12	DIVISION A/Z	166.6125	No Tone	168.4000	110.9	A	Command RPTR-Linked	
	13	CMD 13	DIVISION D/G/Z	168.7000	No Tone	170.9750	110.9	A	Command RPTR-Linked	
	14	A/G	Aerial Ignition	167.9500	No Tone	167.9500	No Tone	A		
	15	CMD 15	DIV G	173.0375	No Tone	167.3250	110.9	A	Command RPTR-Linked	
	16	AIR GUARD		168.6250	No Tone	168.6250	110.9	A		
Name: MARK SPANN				Signature: /s/ Mark Spann						
				Date/Time: 04/19/2017 1600						

MEDICAL PLAN (ICS 206)

1. Incident Name: Cowbell Fire		2. Operational Period: Date From: 04-20-17 Date To: 04-20-17 Time From: 0800 Time To: 2000					
3. Medical Aid Stations:							
Name	Location	Contact Number(s)/Frequency	Paramedics on Site?				
Shanna Ellis (MEDL)/Matt Moran (T)	Medical ICP	318-229-6515/907-887-1539	<input type="checkbox"/> Yes	<input checked="" type="checkbox"/> No			
Jim Stout (EMTF)/Adam White (EMPF)	Division G	480-296-1566/910-391-9053	<input checked="" type="checkbox"/> Yes	<input type="checkbox"/> No			
Frank Abel (EMPF)/Brandon Little (EMTF)	Division A/D	815-575-1563/815-575-1563	<input checked="" type="checkbox"/> Yes	No			
Gene-Paul Matson (EMTF)	Division Z	434-665-0444	<input type="checkbox"/> Yes	<input checked="" type="checkbox"/> No			
Chris Santopietro/Bob Bruington (EMTFs)	Division IA (Oasis)	303-913-4149/801-782-3585	<input type="checkbox"/> Yes	<input checked="" type="checkbox"/> No			
Tom Christian (EMPF)/Brad Burns (EMTF)	Division IA (Deep Lake)	727-389-2481/479-4271095	<input checked="" type="checkbox"/> Yes	<input type="checkbox"/> No			
4. Transportation (indicate air or ground):							
Ambulance Service	Location	Number(s)/Frequency	Level of Service				
Collier County EMS (ground)	Everglades City (Medic 61)	911	<input checked="" type="checkbox"/> ALS	<input type="checkbox"/> BLS			
Collier County Med-Flight (air)	Naples Airport	911	<input checked="" type="checkbox"/> ALS	<input type="checkbox"/> BLS			
6HX Bell 205 (air) medical evacuation	Oasis Heli-base	168.3250 (A/G 85)	<input type="checkbox"/> ALS	<input checked="" type="checkbox"/> BLS			
5. Hospitals:							
Hospital Name	Address	Contact Number(s)	Travel Time		Trauma Center	Burn Center	Helipad
			Air	Ground			
Physicians Regional Collier Blvd	8300 Collier Blvd. Naples, FL 34114 Lat:26°6.313'/Long: -81°41.106'	239-354-6000 (Main) 239-354-6190 (ER)	15	50	<input type="checkbox"/> Yes Level: _____	<input type="checkbox"/> Yes <input checked="" type="checkbox"/> No	<input checked="" type="checkbox"/> Yes <input type="checkbox"/> No
Physicians Regional Pine Ridge	6101 Pine Ridge Road, Naples 34119 Lat:26°12.833'/Long: -81°43.954'	239-348-4000 (Main) 239-304-4748 (ER)	15	50	<input type="checkbox"/> Yes Level: _____	<input type="checkbox"/> Yes <input checked="" type="checkbox"/> No	<input checked="" type="checkbox"/> Yes <input type="checkbox"/> No
Naples Community Hospital	350 7 th Street North, Naples 34102 Lat:26°9.046'/Long: -81°47.907'	239-513-7709 (Main) 239-436-5151 (ER)	15	60	<input checked="" type="checkbox"/> Yes Level: <u>2</u>	<input type="checkbox"/> Yes <input checked="" type="checkbox"/> No	<input checked="" type="checkbox"/> Yes <input type="checkbox"/> No
Jackson Memorial Hospital	1611 NW 12 Avenue, Miami Lat:25°47.508'/Long: -80°12.756'	305-585-1111 (Main) 305-585-6910 (ER)	20	60	<input checked="" type="checkbox"/> Yes Level: <u>1</u>	<input checked="" type="checkbox"/> Yes <input type="checkbox"/> No	<input checked="" type="checkbox"/> Yes <input type="checkbox"/> No
Kendal Regional Medical Center	11750 SW 40 th St., Miami 33175 Lat:25°43.916'/Long: -80°23.148'	305-223-3000 (Main) 305-227-5544 (ER)	20	50	<input checked="" type="checkbox"/> Yes Level: <u>1</u>	<input type="checkbox"/> Yes <input checked="" type="checkbox"/> No	<input checked="" type="checkbox"/> Yes <input type="checkbox"/> No
6. Special Medical Emergency Procedures:							
Once any injury/illness has occurred:							
<ul style="list-style-type: none"> • Report all injuries/illnesses to Division Supervisors (or designees) who will assume command and notify any assigned DIVS Medical Personnel and DIVS Safety Officer. • DIVS will notify ICP Communications. <u>DO NOT USE THE INJURED PERSON'S NAME ON THE RADIO.</u> • ICP Communications will notify MEDL and Incident Safety Officer to assist with the coordination of further medical care and mode of transportation. • Any on-Scene medical personnel will stabilize patient. • Ambulance and/or air resources will be coordinated through ICP Communications, MEDL, and SOFI. 							
ICP: Contact Medical Unit with patient complaint/condition and location.							
<ul style="list-style-type: none"> • ASSIGNED MEDICAL PERSONNEL - CHECK IN WITH COMMUNICATIONS ON ARRIVAL TO LINE AND WHEN MOVED BY DIVS OR SAFETY. SPECIFY IF STAGING IN PLACE OR ROVING SECTIONS. • Request that FFTR/Engine Crews or Single Resources let DIVS know if they have any EMTs or Paramedics and if they have equipment with them. 							
7. Prepared by (MEDL): Matthew Moran (T)/ Shanna Ellis Signature: <i>/s/ Matthew Moran Shanna F. Ellis</i>							
8. Approved by (SOF1): Brian Beisel Signature: <i>/s/ Brian Beisel</i>							
ICS 206	IAP Page _____	Date/Time: <u>04/19/2017</u>					

Tentative AIR Travel 4/21 to 4/25

DEMOB DATE	Travel Method	REQ#	RESOURCE NAME	KIND	UNIT ID	FROM	TO
4/21	A/R	O-26	MESERTH, MORGAN ALOIS	ABRO	OR-OCF	RSW	RDM
4/22	A/R	O-17	MED KIT STOUT	EMTF	AZ-CGR	RSW	PHX
	A/R	O-17.1	STOUT, JIM	EMTF	AZ-CGR	RSW	PHX
4/23	A/R	A-7.4	MARTENS, PETER	HMGB	CA-LNF	RSW	RNO
	A/R	O-18	BRUINGTON, ROBERT	EMTF	UT-FIF	RSW	SLC
	A/R	O-124	BARR, JESSE M	HEQB	AZ-NOW	RSW	TUS
4/24	A/R	A-9.4	SMITH, TAYLOR JAMES	HRAP	ID-PAF	RSW	BOI
	AIR	E-98	ENGINE - T3 - CA-SHF - 321	ENG3	CA-SHF	RSW	SAC
	A/R	E-98.26	TATLOW, BRANDON	ENGB	CA-SHF	RSW	RDD
	AIR	E-98.27	VAUGHN, KENNETH W	ENOP	CA-SHF	RSW	RDD
	AIR	E-98.28	LLOYD, CHRISTOPHER C	FFT1	CA-SHF	RSW	RDD
	AIR	E-98.29	MATTHEWS, BRETT	FFT1	CA-LNF	RSW	RNO
	AIR	E-98.30	ENEIM, JOSEPH M	FFT1	CA-SRF	RSW	CEC
	AIR	E-99	ENGINE - T3 - CA-SHF - 51	ENG3	CA-SHF	RSW	SAC
	AIR	E-99.29	ANDERSON, MIKE	ENGB	CA-SHF	RSW	RDD
	AIR	E-99.30	GERGORY, MICHAEL L	ENOP	CA-SHF	RSW	RDD
	AIR	E-99.31	KISSICK, BRENT D	FFT1	CA-SHF	RSW	RDD
	AIR	E-99.32	KINGSBURY, JESSICA L	FFT1	CA-SHF	RSW	RDD
	AIR	E-99.33	FLAIM, ROBERT	FFT1	CA-SHF	RSW	RDD
	AIR	E-100	ENGINE - T3 - 335	ENG3	CA-MNF	RSW	
	AIR	E-100.29	MCGARR, ZACH	ENGB	CA-MNF	RSW	SMF
	AIR	E-100.30	REDDISH, BRYAN R	ENOP	CA-MNF	RSW	SMF
	AIR	E-100.31	SULLIVAN, PATRICK	FFT1	CA-MNF	RSW	SMF
	AIR	E-100.32	FLANAGAN, THOMAS	FFT1	CA-MNF	RSW	SMF
	AIR	E-100.33	GREEN, JEFFREY B	FFT1	CA-MNF	RSW	SMF
	A/R	O-8	BROWNLOW, SCOTT R	RADO	NM-	MIA	ABQ
	A/R	O-113	RAY, JAMES M	THSP	MT-CGF	RSW	BZN
	A/R	O-117	REYNOLDS, NOLAN	TFLD	CA-SRF	RSW	ACV
	A/R	O-118	MATHESON, NICHOLAS W	TFLD	CA-MNF	RSW	SMF
	A/R	O-129	DARGAN, CHRIS	THSP	MT-CES	RSW	HLN
	A/R	O-130	DOBBS, DAVE E	PSC2	AZ-SUM	RSW	FLG
	A/R	O-190.54	SOLBERG, LESLIE LOUISE	PROC	OR-MHF	RSW	PDX
4/25	A/R	O-5	CORNETT, SUSAN E	LSC2	TX-TXF	RSW	SHV
	A/R	O-127	CZERNIK, HELEN	INBA	DC-	RSW	ORF
	A/R	O-135	FOCO JR, DONALD HOWARD	SOFR	MI-HMF	RSW	PLN
	A/R	O-144	WORLEY, WILLARD R	TFLD	KY-DBF	RSW	LEX
	AIR	O-190.40	BAKER, JARED LEATH	BCMG	KY-LBF	RSW	BNA
4/26	AIR	C-8	CREW - CAMP - GREAT ONYX JCC - CREW #1 10 crewmembers	CC	KY-DBF	RSW	BNA
	AIR	O-122	MCDERMOTT, PETER	HECM	KY-CGP	RSW	TYS
	A/R	O-138	MALDONADO, SAM	SEC1	CA-BDF	RSW	ONT
	A/R	O-142	KELLY, CHRISTOPHER T	SEC1	MA-EMR	RSW	BOS
	A/R	O-148	JOHNSON, MICAH DARRELL	DIVS	WA-OLF	RSW	SEA
	A/R	O-154	YOUNG, JOANNE	READ	NM-AZP	RSW	CEZ

DMOB date = Travel Date

Something wrong, out of place?? See DMOB!
Make sure DMOB has your **Full Name** and **Date of Birth**

TRAINING MESSAGE

Trainees, if you haven't checked in with the Training Specialist, please do so as soon as possible. The process takes only a few minutes to complete if you come prepared with the names and addresses for your home unit training officer and incident trainer/evaluator. Bring your Position Task Book and your 'qualification' card, as well. We are located in the trailer with Plans, GISS and ITSS.

And if you've already checked in with the previous Training Specialist, it's not a bad idea to stop by to introduce yourself and let us know how your assignment is progressing.

Mary Leathers and Debra Burgos

"Education is when you read the fine print. Experience is what you get if you don't."
~Pete Seeger~

Tentative DMOB Schedule 4/20 to 4/24

DEMOB DATE	REQ #	RESOURCE NAME	KIND	TRV	JETPORT
04/20/2017	O-110	MITCHELL, CRAIG	THSP	POV	RSW
04/21/2017	E-59	ENGINE - T6 - CSP 661	ENG6	AOV	CAE
	E-1011	SEMINOLE PERTROLIUM-FUEL TENDER	FT1		
	O-26	MESERTH, MORGAN ALOIS	ABRO	A/R	RDM
	O-65	BLAKE, SUSAN M	PIO2	AOV	TLH
04/22/2017	O-17	MED KIT & STOUT, JIM	EMTF	A/R	PHX
	O-40	SEEHASE, ROBERT J	SEC1	AOV	DLH
	O-89	FOLEY, JOHN	SOFR	A/R	LAS
	O-195	MATSON, GENE-PAUL	EMTF	POV	CHO
04/23/2017	E-64	ATV - FIRE - SWAMP BUGGY 2	ATV		
	E-89	ENGINE - T6 - 607	ENG6		
	O-18	BRUINGTON, ROBERT	EMTF	A/R	SLC
	O-124	BARR, JESSE M	HEQB	A/R	TUS
04/24/2017	E-98	ENGINE - T3 - CA-SHF - 321 CREW SWAP?	ENG3	AIR	SAC
	E-99	ENGINE - T3 - CA-SHF - 51 CREW SWAP?	ENG3	AIR	SAC
	E-100	ENGINE - T3 - 335 CREW SWAP?	ENG3	AIR	
	O-8	BROWNLOW, SCOTT R	RADO	A/R	ABQ
	O-21	MODULE - SUPPRESSION - NPS #1	HCM	AOV	LIT
	O-113	RAY, JAMES M	THSP	A/R	BZN
	O-117	REYNOLDS, NOLAN	TFLD	A/R	ACV
	O-118	MATHESON, NICHOLAS W	TFLD	A/R	SMF
	O-121	BANNON, BAIN	SEC1	AOV	AEX
	O-129	DARGAN, CHRIS	THSP	A/R	HLN
	O-130	DOBBS, DAVE E	PSC2	A/R	FLG
04/24/2017	O-190.54	SOLBERG, LESLIE LOUISE	PROC	A/R	PDX

"TRAVEL Date = DMOB Date" If you have QUESTIONS
see DMOB!!

PHONE LIST - COWBELL FIRE as of 4/19/2017

Position	Name	Phone Number	Position	Name	Phone Number
COMMAND			OPERATIONS		
Incident Commander	Mike Wilkins	828-421-5026	Ops Section Chief	Paul Reynolds	662-418-9743
Incident Commander (t)	Andy Baker	706-400-2150	Ops Section Chief Deputy	Dwight Snow	352-516-4969
Deputy Incident Commander	Mark Morales	479-264-7991	Planning Ops	Michael Heard	334-488-5966
Liaison Officer	Andy Gaston	706-508-2363	Division A/D	Kerry Clark	205-272-2424
Public Information	Terry Krasko	479-280-0452	Division G	Vic Doig	352-493-3155
Public Information	Michael R Williams	470-599-3926	Division Z	Tim Nutley	479-227-0893
Safety Officer	Brian Beisel	270-978-1610	Division Initial Attack	Chris Wilson	918-314-7264
Safety Officer	Ivan Cupp	405-990-7155	Division Structure Protection	Shawn Nagle	662-231-4024
			AIR OPERATIONS		
PLANNING			Air Ops Branch Director	John Bragg	423-483-2798
Chief	Terry Pierce	423-596-2694	Air Ops Branch Director (t)	Mike Mowry	870-214-0034
Chief	Dave Dobbs	928-699-5706	Air Tactical Gropu Supervisor	Steve Little	
Resource Unit Leader	Sue Wilder	985-264-2288	Air Support Group Supervisor	Matt Clinton	
Resource Unit Leader	Steve Wells	803-603-0502	Oasis Helibase Manager	Mark Oetzmann	208-315-5030
Situation Unit Leader	Michael J Williams	828-835-0094			
Fire Behavior Analyst	Glenn Fortenberry	501-762-3751	LOGISTICS		
Air Resource Advisor	Andrea Holland	970-274-0010	Chief	Cindy Schiffer	540-230-1269
READ	JoAnne Young	970-422-2246	Chief	Bill Lisowsky	270-816-7417
IMET	Steven Ippoliti	954-826-9405	Chief (t)	Terry Holsclaw	435-201-4443
GISS	Alan Smith	903-261-3294	Chief (t)	Chris Alford	571-334-8549
GISS	Katy McCurdy	404-210-3996	Ground Support Unit Leader	Joe Emberson	580-317-5315
Demob	Henry Hickerson	540-798-2218	Ground Support Unit Leader	Randy Chapin	601-405-5711
Check In	Allison Cochran	256-566-5509	Ground Support Unit		772-631-2568
Training Specialist	Debra Burgos	404-987-3256	Equipment Manager		
Technology Support	Dan Leduc	318-613-0362	Ordering Manager	Sandy Rhodes	501-282-0085
Technology Support	Scotty Grest	770-595-1521	Ordering Manager	Natalie Broce	540-968-3734
			Supply Unit Leader	Bill Kitchings	601-741-2296
			Facilities (t)	Jared Baker	270-804-5182
FINANCE			Facilities (t)	Jamiel Jones	
Chief	Randee Olson	218-370-0561	Communications	Mark Spann	936-208-0488
Time Unit Leader	Sandra Fix	540-460-2509	Comms Trailer		772-631-2573
Cost Unit Leader	Susan Deimel	501-337-3598	Medical Unit Leader	Shanna Ellis	318-229-6515
Comp/Claims	Donna Rogers	803-295-3033	Security Manger	David Clark	573-714-5142
Procurement	Leslie Solberg	360-553-9830	Security Mananger (t)	RJ Seehase	414-739-5696
			Security	Chris Kelly	978-580-9245
			Security	Bain Bannon	318-446-1759
			Security	Sam Maldonado	909-522-6905
			Security	Stanley Garner	352-672-1036
			Big Cypress National Preserve	Duty Officer	239-719-0241

81°20'W

81°10'W

81°0'W

80°50'W

21,815 acres
04/20/2017
0800 hrs

Cowbell Fire Vicinity Map

U.S. Department of the Interior
Big Cypress National Preserve
33100 Tamiami Trail East
Ochopee, FL 34141



North American Datum 1983
Map Created 4/19/2017



No warranty is made by the National Park Service (NPS) as to the accuracy, reliability, or completeness of this data for individual use or aggregate use with other data, or for purposes not intended by NPS.



26°20'N

26°20'N

26°10'N

26°10'N

26°0'N

26°0'N

25°50'N

25°50'N

Immokalee

Naples
26 Miles

Fire Operations Center

GULF OF MEXICO

Bear Island Gr

Turner River Rd

Exit 80

Upper Wagonwheel
Lower Wagonwheel
FOC

HQ

H.P. Williams
Roadside Park

Preserve Headquarters

Parliament

Parking
Kirby Storter
Roadside Park

Mohrre Station

Oasis Visitor Center

Loop Rd

Loop Rd

Loop Rd

Rest Area

Ochopee Fir
M63 Rest Area

Hotline

Tru 4

Cowbell Fire

No Exit

Green Up

Looney

Ft. Lauderdale
48 Miles

Mile 48

MM 49

MM 41
on Hwy 41

MM 42

W Boundary

W Feeder Rd

CR 1283

CR 181

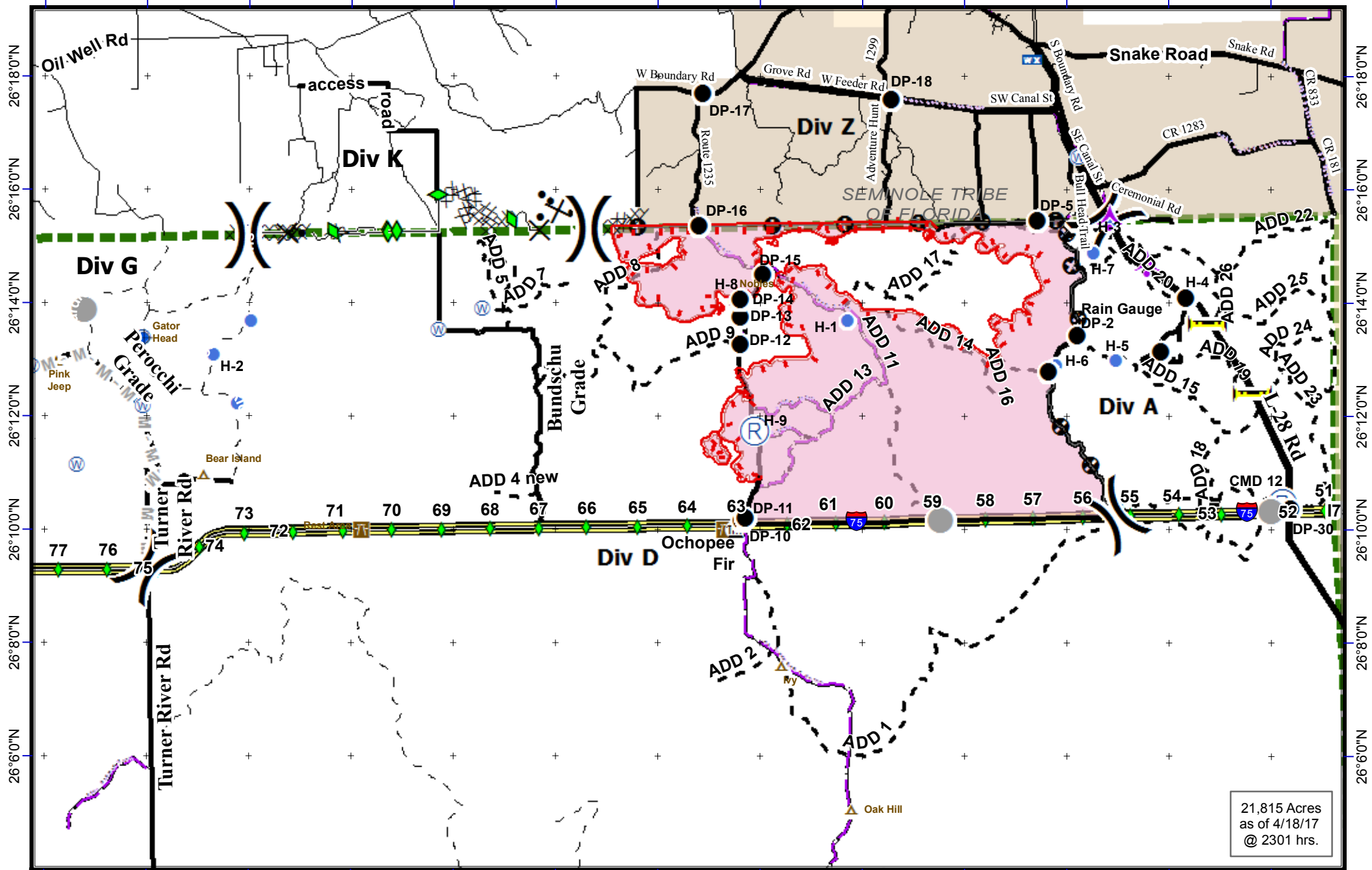
Bundschu Grade

Nobles Grade

Eleven Mile Rd

I-28 Rd

81°18'0"W 81°16'0"W 81°14'0"W 81°12'0"W 81°10'0"W 81°8'0"W 81°6'0"W 81°4'0"W 81°2'0"W 81°0'0"W 80°58'0"W 80°56'0"W 80°54'0"W



21,815 Acres
as of 4/18/17
@ 2301 hrs.

Cowbell Fire
FL-BCP-017033

IAP Map
April 20, 2017
Day Shift



- ▬ Uncontrolled Fire Edge
- Completed Line
- M - M** Mastication Line
- Completed Disk Line
- Proposed Line
- ▼ Rain Gauge
- Drop Point
- Helispot
- () Division
- WX Mobile Weather
- Ⓡ Repeater
- ▲ Aerial Hazard
- Private Structures
- NPS Property
- I Bridge Locations
- I-75
- Improved Road
- Primary Buggy Trail

NAD 83 UTM 17

0 0.5 1 2 3 Mile

Medical Incident Report- "9 Line"

FOR ALL MEDICAL EMERGENCIES: IDENTIFY ON SCENE INCIDENT COMMANDER BY NAME AND POSITION AND ANNOUNCE "MEDICAL EMERGENCY" TO INITIATE RESPONSE FROM IMT COMMUNICATIONS/DISPATCH.

Use items one through nine to communicate situation to communications/dispatch.

1. CONTACT COMMUNICATIONS-

Ex: "Cowbell Communications, Div. Alpha. Stand-by for Priority Medical Incident Report." (If life threatening request designated frequency be cleared for emergency traffic.)

2. INCIDENT STATUS: Provide incident summary and command structure.

Nature of Injury/Illness		Describe the injury <i>(Ex: Broken leg with bleeding)</i>
Incident Name		Geographic Name + "Medical" <i>(Ex: Trout Meadow Medical)</i>
Incident Commander		Name of IC
Patient Care		Name of Care Provider <i>(Ex: EMT Smith)</i>

3. INITIAL PATIENT ASSESSMENT: Complete this section for each patient. This is only a brief, initial assessment. Provide additional patient info after completing this 9 Line Report.

Number of Patients:	Male / Female	Age:	Weight:
Conscious? <input type="checkbox"/> YES <input type="checkbox"/> NO = MEDEVAC!			
Breathing? <input type="checkbox"/> YES <input type="checkbox"/> NO = MEDEVAC!			
Mechanism of Injury: <i>What caused the injury?</i>			
Lat/Long (Datum NAD83)			

4. SEVERITY OF EMERGENCY, TRANSPORT PRIORITY

SEVERITY	TRANSPORT PRIORITY
<input type="checkbox"/> URGENT-RED Life threatening injury or illness. <i>Ex: Unconscious, difficulty breathing, bleeding severely, 2° – 3° burns more than 4 palm sizes, heat stroke, disoriented.</i>	Ambulance or MEDEVAC helicopter. Evacuation need is IMMEDIATE.
<input type="checkbox"/> PRIORITY-YELLOW Serious Injury or illness. <i>Ex: Significant trauma, not able to walk, 2° – 3° burns not more than 1-2 palm sizes.</i>	Ambulance or consider air transport if at remote location. Evacuation may be DELAYED.
<input type="checkbox"/> ROUTINE-GREEN Not a life threatening injury or illness. <i>Ex: Sprains, strains, minor heat-related illness.</i>	Non-Emergency. Evacuation considered Routine of Convenience.

5. TRANSPORT PLAN:

Air Transport: (Agency Aircraft Preferred)

<input type="checkbox"/> Helispot	<input type="checkbox"/> Short-haul/Hoist	<input type="checkbox"/> Life Flight	<input type="checkbox"/> Other
Ground Transport:			
<input type="checkbox"/> Self-Extract	<input type="checkbox"/> Carry-Out	<input type="checkbox"/> Ambulance	<input type="checkbox"/> Other

6. ADDITIONAL RESOURCE/EQUIPMENT NEEDS:

<input type="checkbox"/> Paramedic/EMT(s)	<input type="checkbox"/> Crew(s)	<input type="checkbox"/> SKED/Backboard/C-Collar
<input type="checkbox"/> Burn Sheet(s)	<input type="checkbox"/> Oxygen	<input type="checkbox"/> Trauma Bag
<input type="checkbox"/> Medication(s)	<input type="checkbox"/> IV/Fluid(s)	<input type="checkbox"/> Cardiac Monitor/AED
<input type="checkbox"/> Other (i.e. splints, rope rescue, wheeled litter)		

7. COMMUNICATIONS:

Function	Channel Name/Number	Receive (Rx)	Tone/NAC *	Transmit (Tx)	Tone/NAC *
COMMAND	CARNS Rpt Channel 1	172.4250	1035	170.1000	1035
COMMAND	OASIS Rpt Channel 2	172.4250	1035	171.6250	1035
COMMAND	CMD Channel 12	166.6125	No Tone	168.4000	110.9
AIR-TO-GRND	AG/85 Channel 10	168.3250	No Tone	168.3250	No Tone
TACTICAL					

*(NAC for digital radio system)

8. EVACUATION LOCATION:

Lat/Long (Datum NAD83) <i>EX: N 40 42.45' x W 123 03.24'</i>	
Patient's ETA to Evacuation Location:	
Helispot/Extraction Size and Hazards:	

9. CONTINGENCY:

Considerations: <i>If primary options fail, what actions can be implemented in conjunction with primary evacuation method? Be thinking ahead...</i>	REMEMBER: Confirm ETA's of resources ordered Act according to your level of training Be Alert. Keep Calm. Think Clearly. Act Decisively.
--	--

