



# Incident Action Plan

Day Operational Period

Friday

4/21/17

0800-2000

## Cowbell Fire

21,815 acres

55% contained

FL-BCP-017033

PPKX14 (1502)

PFFSKX14017001

FFF2000000KX140



QR CODE  
INCIDENT MAP

INCIDENT OBJECTIVES	1. Incident Name  <b>Cowbell Fire</b>	2. Date Prepared <b>4/20/17</b>	3. Time Prepared <b>1200</b>
4. Operational Period <b>4/21/17 0800 - 2000</b>			
5. General Control Objectives For The Incident <u>Objectives for the Incident:</u> <ul style="list-style-type: none"> <li>• Protection of human life is top priority through the use of sound risk management decisions that are commensurate with values at risk.</li> <li>• Protect private property and infrastructure, federal facilities, critical transportation corridors, recreational and cultural resource values, T&amp;E species and their habitat (e.g. Florida Panther, Florida bonneted bat, Red-Cockaded Woodpecker), and wilderness values through coordination with READS and following MIST Tactics on initial and extended attack fires.</li> <li>• Provide opportunities to communicate and educate the public on the role of fire in the BCP and FPR ecosystems through social media and other outlets.</li> <li>• Provide training opportunities for Preserve, State, and local federal fire agency personnel to actively enhance successional planning of future firefighting personnel.</li> <li>• Sustain and enhance relationships with the people we serve.</li> </ul>			
<u>Control Objectives:</u> <ul style="list-style-type: none"> <li>• Utilize confine, contain, and point source protection strategies and tactics that commit responders only to operations where and when they can be successful.</li> <li>• In order to minimize impacts to high values including Seminole and Miccosukee tribal lands, Sanctuary community, and private land within and near to the boundaries of the Big Cypress National Preserve and Florida Panther Wildlife Refuge keep fire: <ul style="list-style-type: none"> <li>○ West of Add 14 and Add 17 on the eastern side</li> <li>○ South of the Preserve boundary on the northern side</li> <li>○ North of Interstate 75 on the south side</li> <li>○ East of State Highway 29 on the west side</li> </ul> </li> <li>• Provide initial attack for Big Cypress National Preserve and Florida Panther Refuge in coordination with local resources.</li> <li>• Minimize smoke impacts on I-75, State Road 29 and US Highway 41 in order to avoid safety threats to the public.</li> </ul>			
6. Weather forecast for Period  See attached weather forecast.			
7. General Safety Message  Look up, look down, look all around for hazards, recognize them and mitigate them.			
8. ATTACHMENTS (X IF ATTACHED) <input checked="" type="checkbox"/> Organization List - ICS 203 <input checked="" type="checkbox"/> Medical Plan - ICS 206 <input type="checkbox"/> _____ <input checked="" type="checkbox"/> Division Assignment Lists - ICS 204 <input checked="" type="checkbox"/> Air Ops – ICS 220 <input type="checkbox"/> _____ <input checked="" type="checkbox"/> Communications Plan - ICS 205 <input checked="" type="checkbox"/> Incident Map <input type="checkbox"/> _____			
9. Prepared By (Planning Section Chief)  <b>Terry Pierce/Dave Dobbs</b>	10. Approved By (Incident Commander)  <b>Michael L Wilkins</b>		

## ORGANIZATION ASSIGNMENT LIST (ICS 203)

<b>1. Incident Name:</b>		<b>2. Operational Period:</b> DAY	
COWBELL		Date/Time From: 04/21/2017 0800 FRI	Date/Time To: 04/21/2017 2000 FRI
<b>3. Incident Commander(s) and Command Staff:</b>		FACILITIES UNIT JARED BAKER (T)	
IC/UC	MICHAEL WILKINS / ANDY BAKER(T)	GROUND SUPPORT UNIT	JOE R EMBERSON / RANDY CHAPIN
DEPUTY	MARK MORALES	COMMUNICATIONS UNIT	MARK SPANN
LIAISON OFFICER	ANDY GASTON	MEDICAL UNIT	SHANNA F ELLIS / MATT MORAN(T)
SAFETY OFFICER	BRIAN BEISEL / IVAN CUPP	SECURITY UNIT	DAVID CLARK / RJ SEEHASE(T)
INFORMATION OFFICER	TERRY KRASKO / MICHAEL R WILLIAMS(T)	ORDERING MANAGER	NATALIE BROCE / TAMMIE PERNAS(T)
<b>4. Agency/Organization Representative(s):</b>		RECEIVING AND DISTRIBUTION MANAGER	PRAWIT HESS
<b>Agency/Organization</b>	<b>Name</b>	<b>7. Operations Section:</b>	
BIG CYPRESS NATIONAL PRESERVE	TAMMY WHITTINGTON J.D. LEE	OPS SECTION CHIEF	PAUL REYNOLDS
BICY CHIEF OF FIRE AND AVIATION	JORDON MCKNIGHT	DEPUTY OPS SECTION CHIEF	DWIGHT SNOW
BICY /PANTHER AFMO	BYRON HART	STATEGIC OPS SECTION CHIEF	JIM DURRWACHTER
PANTHER ZONE FMO	CASS PALMER	PLANNING OPS	MICHAEL HEARD
COLLIER COUNTY SHERIFF	LT. JAKE WALKER		
SEMINOLE TRIBE OF FLORIDA	MATT FLYING/GRANT STEELMAN	DIVISION/GROUP	A/D KERRY CLARK
FLORIDA HIGHWAY PATROL	LT. JOSEPH BOWERS	DIVISION/GROUP	G VICTOR DOIG
GREATER NAPLES FIRE RESCUE	J. NOLAN SAPP	DIVISION/GROUP	K TIM NUTLEY
FFS COLLIER CO. FOREST AREA SUP	TONY CURELLA	DIVISION/GROUP	Z MICAH JOHNSON CHRIS RICHARDS (T)
FFS HENDRY CO. FOREST AREA SUP	JOE LECEA	DIVISION/GROUP	IA- DEEP LAKE STAGING KRIS WILSON
<b>5. Planning Section:</b>		DIVISION/GROUP	IA-OASIS STAGING KRIS WILSON
CHIEF	TERRY PIERCE / DAVE DOBBS	DIVISION/GROUP	STRUCTURE PROTECTION SHAWN NAGLE JACOB SOHR (T)
RESOURCES UNIT	SUE WILDER / STEVE WELLS	DIVISION/GROUP	PARLIAMENT AND MISC FIRES UNSTAFFED
SITUATION UNIT	MICHAEL J. WILLIAMS	<b>7b. Air Operations Branch:</b>	
DOCUMENTATION UNIT	BOB SOBCZAK	AIR OPS BRANCH DIRECTOR	JOHN BRAGG / MIKE MOWERY(T)
DEMOBILIZATION UNIT	HENRY HICKERSON	AIR SUPPORT GROUP SUPERVISOR	MATT CLINTON
FIRE BEHAVIOR ANALYST	GLEN FORTENBERRY	AIR TACTICAL GROUP SUPERVISOR	STEVE LITTLE
TRAINING SPECIALIST	DEBRA BURGOS / MARY LEATHERS(T)	OASIS HELIBASE MANAGER	MARK OETZMANN
GIS SPECIALIST	ALLEN SMITH / KATY MCCURDY	<b>8. Finance/Administration Section:</b>	
TECHNOLOGY SUPPORT SPECIALIST	DAN LEDUC / SCOTT GREST	CHIEF	RANDEE OLSON
INCIDENT METEOROLOGIST	STEVEN IPPOLITI	TIME UNIT	SANDRA FIX
STATUS CHECKIN	TERESA MOSS / ALLISON COCHRAN(T)	PROCUREMENT UNIT	LESLIE SOLBERG
<b>6. Logistics Section:</b>		COMPENSATION UNIT	DONNA ROGERS
CHIEF	CINDY SCHIFFER / BILL LISOWSKY TERRY HOLSCLAW (T)	COST UNIT	SUSAN DEIMEL
SUPPLY UNIT	BILL KITCHINGS / SANDY RHODES(T)	PERSONNEL TIME RECORDER	PEDRA SETLICH KELLY DONALDSON
FACILITIES UNIT	SUSAN CORNETT / JAMIE JONES(T)		
<b>9. Prepared By:</b>	<b>Name:</b> TERRY PIERCE/DAVE DOBBS	<b>Position/Title:</b> PLANNING SECTION CHIEF	<b>Signature:</b>
ICS 203	IAP Page	<b>Date/Time:</b> 04/20/2017 0557	



# Fire Weather Forecast

FORECAST NO: 19                                      NAME OF FIRE: Cowbell Fire  
 PREDICTION FOR: Thursday Day Shift                                      UNIT: Big Cypress National Preserve  
 SHIFT DATE: April 21, 2017                                      Incident Meteorologist: *Steven Ippoliti*  
 FORECAST ISSUED: 1900 April 20, 2017                                      954-826-9405

---

**DISCUSSION:** ... **Red Flag Warning is in effect for today due to low RH and 20ft wind in excess of 10 mph...**  
 High pressure will be in control for today. A dry air mass will move across the area today, along with breezy conditions, which will create critical fire weather conditions. The lowest RH should occur during the early afternoon, before the east coast sea breeze moves across by late afternoon. Moisture levels increase on Saturday with showers possible in the afternoon.

**TODAY (FRIDAY DAY SHIFT):**  
**WEATHER:** Mostly sunny, becoming partly cloudy in the afternoon. Red Flag Conditions.  
**WIND (20 FT):** Light & variable becoming east to east southeast at 8 to 12 mph in the late morning with gusts of 15 to 20 mph.  
**MAX TEMPERATURES:** 85 to 89.  
**MIN RH:** 37%.  
 Chance of measurable rain: 5%                                      LAL: 1  
**DISPERSION:** 63 MAX    **MIXING HEIGHT:** 5500    **TRANSPORT WIND:** East around 20 mph.

---

**TONIGHT (FRIDAY NIGHT):**  
**WEATHER:** Partly cloudy.  
**WIND (20 FT):** Calm to light and variable. Northerly drainage flow possible.  
**MIN TEMPERATURES:** 61 to 65F.  
**MAX RH:** 98 to 100%.    LVORI 9 (max).    LAL: 1    Dispersion: 2    Chance measurable rain: 0%.

---

**SATURDAY:**  
**WEATHER:** Partly Cloudy becoming mostly cloudy to overcast in the afternoon with rain possible. An occasional lightning strike is also possible.  
**WIND (20 FT):** Light & variable becoming southeast around 10 mph, with gusts of 15 to 20 mph.  
**MAX TEMPERATURES:** 85 to 88F.  
**MIN RH:** 45%.  
 Chance of measurable rain 35%.                                      LAL: 2  
**DISPERSION:** 70 MAX    **MIXING HEIGHT:** 5500    **TRANSPORT WIND:** Southeast 15 mph.

---

**GENERAL OUTLOOK SUNDAY THROUGH TUESDAY:** Showers, and possible thunderstorms, will continue across the area through the day on Sunday, behind a low that moved across the area Saturday night. Sunday night may see some fog development. A cold front is forecast to move through during the day Monday, bringing another chance for showers and thunderstorms.  
**WIND:** Sunday: South 5 to 10 mph. Monday: Southwest 10 to 15, becoming northwest around 15 behind a cold front.  
**WEATHER/TEMPERATURE:** Dry Saturday. Showers possible on Sunday and Monday. Highs in the mid 80's. Lows in the low 60's.  
**MIN RH:** Sunday: 51%    Monday: 47%    Tuesday: 40%  
**NIGHT TIME RECOVERY:** 95% to 100% each night.



Sunrise Friday: 6:57 am  
 Sunset Friday: 7:53 pm

Source: US Naval Observatory

Current Incident  
 area RAWS

## FIRE BEHAVIOR FORECAST

**FORECAST NUMBER: #18**

**TYPE OF FIRE: Wildland**

**FIRE NAME: Cowbell**

**OPERATIONAL PERIOD: 04/21/2017**

**DATE ISSUED: 04/20/2017**

**TIME ISSUED: 1800**

**UNIT: Big Cypress Preserve**

**SIGNED: *Glen Fortenberry***

### FUEL ASSUMPTIONS:

Primary fuels consist of grass, shrub, pine overstory with shrub palmetto understory and timber litter. Current fuel conditions are favorable for very active fire behavior within the grass and shrub fuels. Fire activity will greatly diminish in the wide cypress strands. The current drought conditions have led to both live and dead fuel moistures reaching levels of concern. Expect all fuels to burn readily, including those that appear green.

### The fuel moisture for today is:

Calculated 1 hr fuel 6%, 10 hr fuel 7%, 100 hr fuel 11%, 1000 hr fuel 16%

**Critical fire behavior thresholds:** 1 HR Fuel Moisture <6%, RHs below 40% and a Dispersion Index greater than 60.

**ALL THREE THRESHOLDS ARE MET FOR TODAY**

**WEATHER:** Mostly sunny, becoming partly cloudy in the afternoon.

**WIND (20 FT):** Light & variable becoming east at 8 to 12 mph in the late morning with pm. gust 15-20 mph.

**MAX TEMPERATURES:** 85-89.

**MIN RH:** 37%.

**LAL:** 1      Chance measurable rain: 5%

**DISPERSION:** 63 **MAX MIXING HEIGHT:** 5500 **TRANSPORT WINDS:** East around 20 mph in afternoon.

### General Fire Behavior Forecast:

Fuels are drought stricken and support high intensity fire behavior exceeding ¼ + mile rate of spread and ¼+ mile spotting in the pine/ palmetto areas.

### **Specific:**

**Cowbell:** The fire will continue to consume available fuels with backing, flanking and head fires as impacted by wind direction. If the fire gets established and produces a column it will continue to run until it reaches an unburnable fuel.(ex cypress strand). Reburn potential is increasing across the burn area especially in pine stands that burned at least 7 or more days prior to today.

**Initial Attack:** Due to fuel conditions, high resistance to suppression efforts can be expected in all fuel types. Expect rapid rates of spread, with high intensities in pine/palmetto fuel type and anticipate spotting to challenge your control efforts. Heavy resistance can be expected on any new starts in all fuel types

### **PREDICTIONS FOR MOST ACTIVE TIME OF PEAK BURNING PERIOD USING WEATHER FROM INCIDENT IMET**

<b>Fuel Model</b>	<b>Fire Behavior</b>
Grass	ROS 30 to 50 ch/hr, FL 6-8 ft.
Shrub	ROS 15-25 ch/hr, FL 8-10 ft
Timber Litter (Cypress)	ROS 4-8 ch/hr, FL 2-4 ft
Maximum Spotting	1500 feet
Probability of Ignition	60% in all models

**AIR OPERATIONS:** No impacts anticipated for air ops. The inversion lifts by 0900.

**FIRE BEHAVIOR SAFETY:** Remember the watchout situation "Weather is getting hotter and drier" Keep up to date on weather changes. Fuels conditions are such that fire behavior can change quickly as weather changes.

# HEALTH AND SAFETY MESSAGE

We are ALL responsible for SAFE behaviors

**INCIDENT:** Cowbell Fire

**DATE:** April 21, 2017

**Major Hazards and Risks:** Heat-Related Injuries, Snags, Driving

**Heat-Related Injuries:** occur because of how you have taken care of yourself on and off the fireline. Staying hydrated, taking breaks as needed and getting plenty of rest will greatly reduce your chances of having one.

**Heat-Related Injuries** – Heat-related injuries (heat cramps, heat exhaustion, and heat stroke) are most likely to occur when it’s hot and humid

**Heat Cramps** – Signs/Symptoms: Sweating, dehydration, muscle cramps

**Heat Exhaustion** – Signs/Symptoms: Profuse sweating, cool clammy skin, dehydration, persistent muscle cramps, dizziness, headache

**Heat Stroke** – Signs/Symptoms: Hot dry skin, Rapid but weak pulse, Hyperventilation, vomiting, dizziness, confusion, seizures or loss of consciousness. **This is a medical emergency.**

**Snags** – Do not fall snags on the intended unburned side of the constructed fireline, unless they are an obvious safety hazard to crews working in the vicinity. On the intended burnout side of the line, fall only those snags that would reach the fireline should they burn and fall over, or are an obvious safety hazard to crews working in the vicinity. {Reference the “Big Cypress National Preserve-Wildlife Incident Plan” for additional minimum suppression tactics.}

At all times safety is the top priority and you should maintain situation awareness and be aware of forecasted winds, dead & broken or burning tops and limbs. IRPG pp. 22-23.

**Driving** – Obey all state and local traffic laws AT ALL TIMES. Wear safety belts and run headlights when travelling on the incident. The **NIGHT TIME speed limit of 45 mph** on Highway 41 and Highway 29, are for the protection of the Florida panthers, other wildlife and your safety, **RESPECT IT!! {YOU WILL BE TICKETED IF CAUGHT SPEEDING}**

Safety Officers: Brian Beisel, Ivan Cupp

## Division/Group Assignment List (ICS 204 WF)

<b>1. Incident Name:</b>			<b>3.</b>			
COWBELL			<b>Branch:</b>		<b>Division/Group:</b>  <b>A / D</b>	
<b>2. Operational Period: DAY</b>						
Date/Time From: 04/21/2017 0800 FRI		Date/Time To: 04/21/2017 2000 FRI				
<b>4. Operations Personnel</b>						
<b>OPERATIONS CHIEF</b>		PAUL REYNOLDS		<b>DEPUTY OPERATIONS CHIEF</b>		DWIGHT SNOW
<b>PLANNING OPERATIONS</b>		MICHAEL HEARD		<b>STRATEGIC OPERATIONS</b>		JAMES DURRWACHTER
<b>AIR OPERATIONS BRANCH DIRECTOR</b>		JOHN BRAGG MIKE MOWERY (T)		<b>DIVISION / GROUP SUPERVISOR</b>		KERRY CLARK
<b>5. Resources Assigned this Period</b>						
Strike Team / Task Force / Resource Designator		LWD	Leader	Number Persons	Drop Off PT./Time	Pick Up PT./Time
HCM MODULE - SUPPRESSION - BIFZ #2 O-106		05/01	BRETT MOREFIELD	10	ICP/0800	ICP/2000
EMTF O-196		05/01	BRANDON LITTLE	1	ICP/0800	ICP/2000
EMPF O-36		04/25	FRANK ABEL	1	ICP/0800	ICP/2000
<b>6. Control Operations/Work Assignments:</b>						
<p>Task:</p> <ul style="list-style-type: none"> <li>• Patrol and mop up 25 ft. from control line</li> <li>• Monitor and patrol by air</li> </ul> <p>Purpose:</p> <ul style="list-style-type: none"> <li>• To keep fire confined and contained west of ADD 17/ADD 14 on east flank of fire</li> <li>• To protect structures</li> <li>• To alert FHP of potential impact to I-75</li> <li>• Keep fire contained north of I-75</li> </ul> <p>End State:</p> <ul style="list-style-type: none"> <li>• Control fire perimeter west of ADD 17/ADD 14 to eliminate threat to Sanctuary area structures</li> <li>• Minimize risk to public traveling on I-75</li> <li>• Confine fire perimeter to reduce threats to resource values at risk</li> </ul>						
<b>7. Special Instructions:</b>						
Establish and maintain LCES during operational period. Do not engage in fire suppression activities along I-75 shoulders unless traffic hazards have been mitigated						
<b>8. Division/Group Communication Summary</b>						
Function	Channel	RX Frequency N/W	RX Tone/NAC	TX Frequency N/W	TX Tone/NAC	Mode
COMMAND	12	166.6125		168.4000	110.9	A
COMMAND	13	168.7000		170.9750	110.9	A
TACTICAL	4	168.6000		168.6000		A
AIR TO GROUND	10	168.3250		168.3250		A
<b>9. Prepared By (Resource Unit Leader)</b>			<b>Approved By (Planning Section Chief)</b>		<b>Date</b>	<b>Time</b>
SUE WILDER, STEVE WELLS RESL			TERRY PIERCE / DAVE DOBBS		04/20/2017	1900

## Division/Group Assignment List (ICS 204 WF)

<b>1. Incident Name:</b>			<b>3.</b>				
COWBELL			<b>Branch:</b>		<b>Division/Group:</b>		
<b>2. Operational Period: DAY</b>					<b>G</b>		
Date/Time From: 04/21/2017 0800 FRI		Date/Time To: 04/21/2017 2000 FRI					
<b>4. Operations Personnel</b>							
<b>OPERATIONS CHIEF</b>		PAUL REYNOLDS		<b>DEPUTY OPERATIONS CHIEF</b>		DWIGHT SNOW	
<b>PLANNING OPERATIONS</b>		MICHAEL HEARD		<b>STRATEGIC OPERATIONS</b>		JIM DURRWACHTER	
<b>AIR OPERATIONS BRANCH DIRECTOR</b>		JOHN BRAGG MIKE MOWERY (T)		<b>DIVISION/GROUP SUPERVISOR</b>		VICTOR DOIG	
<b>5. Resources Assigned this Period</b>							
Strike Team / Task Force / Resource Designator		LWD	Leader		Number Persons	Drop Off PT./Time	Pick Up PT./Time
TFLD O-172		04/29	ALAN O KIRBY		1	ICP/0800	ICP/2000
TFLD O-173		04/29	JARED NOBLES (T)		1	ICP/0800	ICP/2000
TFLD O-178		04/29	GEORGE ALLALUNIS		1	ICP/0800	ICP/2000
TFLD O-223		04/29	NOAH DANIELS		1	ICP/0800	ICP/2000
HC1 CREW - T1 - FLAGSTAFF IHC C-9		05/03	ANDREW M PATTERSON		20	ICP/0800	ICP/2000
HEQB O-124		04/22	JESSE BARR		1	ICP/0800	ICP/2000
HEQB O-201		05/02	DAVID POOLE		1	ICP/0800	ICP/2000
ENG6 ENGINE - T6 - FIRE TRAX LLC - B65014 - 610 E-86		04/26	CARLOS GUTIERREZ		3	ICP/0800	ICP/2000
ENG6 ENGINE - T6 - WILDLANDS FIRE SERVICE INC - A57267 - 8 E-87		05/03	BRIAN TERRY		3	ICP/0800	ICP/2000
ENG6 ENGINE - T6 - WILDLANDS FIRE SERVICE INC - 339712 - 9 E-121		04/25	DAVID HOGREFE		3	ICP/0800	ICP/2000
BICY SUPPRESSION BUGGY 3 E-65 (OS)		04/25	UNSTAFFED			ICP/0800	ICP/2000
DUECE BUGGY IA 607 E-89		04/23	BLAKE SHAW		3	ICP/0800	ICP/2000
MAST MASTICATOR - BOOM MOUNTED, TYPE 3 - T 1736 JOHN DEERE E-6		05/12	CARLOS DE LA CRUZ		1	ICP/0800	ICP/2000
MAST GEO-BOY E-83 (OS 4/21)		04/24	ROB SHACKLEFORD		1	ICP/0800	ICP/2000
MAST DAVE'S EXCAVATING E-1051		05/02	RICK DUKES		1	ICP/0800	ICP/2000
SOFR O-193		05/02	ROBERT BERTOLINA		1	ICP/0800	ICP/2000
READ O-154		04/25	JOANNE YOUNG		1	ICP/0800	ICP/2000
<b>8. Division/Group Communication Summary</b>							
Function	Channel	RX Frequency N/W	RX Tone/NAC	TX Frequency N/W	TX Tone/NAC	Mode	
COMMAND	13	168.7000		170.9750	110.9	A	
COMMAND	15	173.0375		167.3250	110.9	A	
TACTICAL	5	168.2500		168.2500		A	
AIR TO GROUND	10	168.3250		168.3250		A	
<b>9. Prepared By (Resource Unit Leader)</b>			<b>Approved By (Planning Section Chief)</b>		<b>Date</b>	<b>Time</b>	
SUE WILDER/STEVE WELLS			TERRY PIERCE/DAVE DOBBS		04/20/2017	1900	



## Division/Group Assignment List (ICS 204 WF)

<b>1. Incident Name:</b>			<b>3.</b>			
COWBELL			<b>Branch:</b>		<b>Division/Group:</b>  <b>G</b>	
<b>2. Operational Period: DAY</b>						
Date/Time From: 04/21/2017 0800 FRI		Date/Time To: 04/21/2017 2000 FRI				
<b>4. Operations Personnel</b>						
<b>OPERATIONS CHIEF</b>		PAUL REYNOLDS		<b>DEPUTY OPERATIONS CHIEF</b>		DWIGHT SNOW
<b>PLANNING OPERATIONS</b>		MICHAEL HEARD		<b>STRATEGIC OPERATIONS</b>		JIM DURRWACHTER
<b>AIR OPERATIONS BRANCH DIRECTOR</b>		JOHN BRAGG MIKE MOWERY (T)		<b>DIVISION/GROUP SUPERVISOR</b>		VICTOR DOIG
<b>5. Resources Assigned this Period</b>						
Strike Team / Task Force / Resource Designator		LWD	Leader	Number Persons	Drop Off PT./Time	Pick Up PT./Time
EMTF O-17		04/21	JIM STOUT	1	ICP/0800	ICP/2000
EMPF O-198		05/01	ADAM WHITE	1	ICP/0800	ICP/2000
<b>6. Control Operations/Work Assignments:</b>						
<p>Task:</p> <ul style="list-style-type: none"> <li>• Patrol and mop up 25 ft. from control line.</li> <li>• Masticate Perocchi Grade to create alternate line.</li> <li>• Continue monitoring and using aerial support to contain slop overs on Nobles Grades.</li> <li>• Monitor Kissimmee Billy Strand using aerial support. Continue to cold trail and extinguish hot spots on Kissimmee Billy Strand.</li> </ul> <p>Purpose:</p> <ul style="list-style-type: none"> <li>• To keep fire contained east of Kissimmee Billy Strand. To establish a contingency line and alternate line.</li> </ul> <p>End State:</p> <ul style="list-style-type: none"> <li>• Confine fire perimeter to reduce threats to resource values at risk.</li> </ul>						
<b>7. Special Instructions:</b>						
Coordinate with Field OPS in the event swing shift resources are required. Utilize MIST tactics as outlined in Fire Operations Guide for BICY. Follow tracked vehicle requirement restrictions.						
<b>8. Division/Group Communication Summary</b>						
Function	Channel	RX Frequency N/W	RX Tone/NAC	TX Frequency N/W	TX Tone/NAC	Mode
COMMAND	13	168.7000		170.9750	110.9	A
COMMAND	15	173.0375		167.3250	110.9	A
TACTICAL	5	168.2500		168.2500		A
AIR TO GROUND	10	168.3250		168.3250		A
<b>9. Prepared By (Resource Unit Leader)</b>			<b>Approved By (Planning Section Chief)</b>		<b>Date</b>	<b>Time</b>
SUE WILDER/STEVE WELLS			TERRY PIERCE/DAVE DOBBS		04/20/2017	1900

## Division/Group Assignment List (ICS 204 WF)

<b>1. Incident Name:</b>			<b>3.</b>			
COWBELL			<b>Branch:</b>		<b>Division/Group:</b>  <b>IA DEEP LAKE STAGING</b>	
<b>2. Operational Period: DAY</b>						
Date/Time From: 04/21/2017 0800 FRI		Date/Time To: 04/21/2017 2000 FRI				
<b>4. Operations Personnel</b>						
<b>OPERATIONS CHIEF</b>		PAUL REYNOLDS		<b>DEPUTY OPERATIONS CHIEF</b>		DWIGHT SNOW
<b>STRATEGIC OPERATIONS</b>		JAMES DURRWACHTER		<b>PLANNING OPERATIONS</b>		MICHAEL HEARD
<b>AIR OPERATIONS BRANCH DIRECTOR</b>		JOHN BRAGG MIKE MOWERY (T)		<b>DIVISION / GROUP SUPERVISOR</b>		KRIS WILSON
<b>5. Resources Assigned this Period</b>						
Strike Team / Task Force / Resource Designator		LWD	Leader	Number Persons	Drop Off PT./Time	Pick Up PT./Time
TFLD O-144		04/24	WILLARD R WORLEY	1	ICP/0800	ICP/2000
TFLD O-177		04/30	DAVID MOORE (T)	1	ICP/0800	ICP/2000
HC2I CREW - T2IA - PR MA #3 C-7 MOD A		04/27	ROBERTO MARTINEZ	10	ICP/0800	ICP/2000
ENG6 ENGINE - T6 - ATTACK-ONE FIRE MANAGEMENT SERVICES INC E-58		04/26	KEVIN CARTER	2	ICP/0800	ICP/2000
ENG6 ENGINE - T6 - CSP 661 E-59		05/04	UNSTAFFED		ICP/0800	ICP/2000
ENG6 ENGINE - T6 - 31 E-7		04/29	JONATHAN O'GORMAN	2	ICP/0800	ICP/2000
BICY SUPPRESSION BUGGY #6 O-68		05/02	SAM ALLEN	1	ICP/0800	ICP/2000
BICY SWAMP BUGGY #2 E-64		04/22	CHRIS DARGAN	1	ICP/0800	ICP/2000
SOFR O-135		04/24	DONALD FOCO	1	ICP/0800	ICP/2000
EMPF O-199		05/01	TOM CHRISTIAN	1	ICP/0800	ICP/2000
EMTF		05/02	BRAD BURNS	1	ICP/0800	ICP/2000
<b>8. Division/Group Communication Summary</b>						
Function	Channel	RX Frequency N/W	RX Tone/NAC	TX Frequency N/W	TX Tone/NAC	Mode
BICY RPTR	1	172.4250	1035	170.1000	1035	D
BICY RPTR	2	172.4250	1035	171.6250	1035	D
PANTHER RPTR	7	164.6250	1188	163.1500	1188	D
TACTICAL	9	166.8250		166.8250		A
AIR TO GROUND	6	169.1125		169.1125		A
<b>9. Prepared By (Resource Unit Leader)</b>			<b>Approved By (Planning Section Chief)</b>		<b>Date</b>	<b>Time</b>
SUE WILDER/ STEVE WELLS RESL			TERRY PIERCE/ DAVE DOBBS		04/20/2017	1900

## Division/Group Assignment List (ICS 204 WF)

<b>1. Incident Name:</b>			<b>3.</b>			
COWBELL			<b>Branch:</b>		<b>Division/Group:</b>  <b>IA DEEP LAKE STAGING</b>	
<b>2. Operational Period: DAY</b>						
Date/Time From: 04/21/2017 0800      FRI		Date/Time To: 04/21/2017 2000      FRI				
<b>4. Operations Personnel</b>						
<b>OPERATIONS CHIEF</b>		PAUL REYNOLDS		<b>DEPUTY OPERATIONS CHIEF</b>		DWIGHT SNOW
<b>STRATEGIC OPERATIONS</b>		JAMES DURRWACHTER		<b>PLANNING OPERATIONS</b>		MICHAEL HEARD
<b>AIR OPERATIONS BRANCH DIRECTOR</b>		JOHN BRAGG MIKE MOWERY (T)		<b>DIVISION / GROUP SUPERVISOR</b>		KRIS WILSON
<b>5. Resources Assigned this Period</b>						
Strike Team / Task Force / Resource Designator		LWD	Leader	Number Persons	Drop Off PT./Time	Pick Up PT./Time
<b>6. Control Operations/Work Assignments:</b>						
<p>Task:</p> <ul style="list-style-type: none"> <li>• Coordinate with BICY duty officer for notification of newly reported ignitions. Coordinate initial attack action with assigned aviation and /or ground assets</li> <li>• Determine IA resource pre-positioning needs across BICY and FPWR</li> </ul> <p>Purpose:</p> <ul style="list-style-type: none"> <li>• Ensure communications with FL Hwy Patrol regarding smoke on I-75 and Hwy 41. Ensure timely response on any IA within BICY and FPWR</li> </ul> <p>End State:</p> <ul style="list-style-type: none"> <li>• Protect human life. Minimize environment damage to protect habitat of threatened and endangered species. Minimize damage to public and private property</li> </ul>						
<b>7. Special Instructions:</b>						
<p>Be prepared for extended staffing as needed. Coordinate with Field OPS to determine need. Follow tracked vehicle requirement restrictions. Establish and maintain LCES during operational period. Utilize MIST tactics as outlined in Fire Operations Guide for BICY. <b>All initial attack will go through BICY Fire Dispatch Center. Incident within an Incident will go through Cowbell communications.</b></p>						
<b>8. Division/Group Communication Summary</b>						
Function	Channel	RX Frequency N/W	RX Tone/NAC	TX Frequency N/W	TX Tone/NAC	Mode
BICY RPTR	1	172.4250	1035	170.1000	1035	D
BICY RPTR	2	172.4250	1035	171.6250	1035	D
PANTHER RPTR	7	164.6250	1188	163.1500	1188	D
TACTICAL	9	166.8250		166.8250		A
AIR TO GROUND	6	169.1125		169.1125		A
<b>9. Prepared By (Resource Unit Leader)</b>			<b>Approved By (Planning Section Chief)</b>		<b>Date</b>	<b>Time</b>
SUE WILDER/ STEVE WELLS RESL			TERRY PIERCE/ DAVE DOBBS		04/20/2017	1900

## Division/Group Assignment List (ICS 204 WF)

<b>1. Incident Name:</b>			<b>3.</b>			
COWBELL			<b>Branch:</b>		<b>Division/Group:</b>  <b>IA OASIS STAGING</b>	
<b>2. Operational Period: DAY</b>						
Date/Time From: 04/21/2017 0800 FRI		Date/Time To: 04/21/2017 2000 FRI				
<b>4. Operations Personnel</b>						
<b>OPERATIONS CHIEF</b>		PAUL REYNOLDS		<b>DEPUTY OPERATIONS CHIEF</b>		DWIGHT SNOW
<b>STRATEGIC OPERATIONS</b>		JAMES DURRWACHTER		<b>PLANNING OPERATIONS</b>		MICHAEL HEARD
<b>AIR OPERATIONS BRANCH DIRECTOR</b>		JOHN BRAGG MIKE MOWERY (T)		<b>DIVISION / GROUP SUPERVISOR</b>		KRIS WILSON
<b>5. Resources Assigned this Period</b>						
Strike Team / Task Force / Resource Designator		LWD	Leader	Number Persons	Drop Off PT./Time	Pick Up PT./Time
TFLD O-60		04/26	HAROLD L KIBBE	1	ICP/0800	ICP/2000
ENG6 ENGINE - T6 - 461- NPS E-57		04/26	GUS SCHAEFER	2	ICP/0800	ICP/2000
HC2I CREW - T2IA - PR MA #3 C-7 MOD B		04/27	LOUIS SAEZ	10	ICP/0800	ICP/2000
ENG6 ENGINE - T6 - WILDLANDS FIRE SERVICE INC - C93328 - 5 E-122		04/25	CHAD ANDERSON	3	ICP/0800	ICP/2000
BICY SUPPRESSION BUGGY #1 E-129		04/23	JAMES RAY	1	ICP/0800	ICP/2000
ENG6 ENGINE - T6 - CO-PSF - 7-1 E-140		04/27	KYLE A AVESING	3	ICP/0800	ICP/2000
SOFR O-54		04/26	KRIS CRODDY	1	ICP/0800	ICP/2000
EMTF O-197		05/01	CHRIS SANTOPIETRO	1	ICP/0800	ICP/2000
EMTF O-18		04/22	BOB BRUINGTON	1	ICP/0800	ICP/2000
<b>6. Control Operations/Work Assignments:</b>						
<p>Task:</p> <ul style="list-style-type: none"> <li>• Coordinate with BICY duty officer for notification of newly reported ignitions. Coordinate initial attack action with assigned aviation and /or ground assets</li> <li>• Determine IA resource pre-positioning needs across BICY and FPWR</li> </ul> <p>Purpose:</p> <ul style="list-style-type: none"> <li>• Ensure communications with FL Hwy Patrol regarding smoke on I-75 and Hwy 41. Ensure timely response on any IA within BICY and FPWR</li> </ul> <p>End State:</p> <ul style="list-style-type: none"> <li>• Protect human life. Minimize environment damage to protect habitat of threatened and endangered species. Minimize damage to public and private property</li> </ul>						
<b>8. Division/Group Communication Summary</b>						
Function	Channel	RX Frequency N/W	RX Tone/NAC	TX Frequency N/W	TX Tone/NAC	Mode
BICY RPTR	1	172.4250	1035	170.1000	1035	D
BICY RPTR	2	172.4250	1035	171.6250	1035	D
PANTHER RPTR	7	164.6250	1188	163.1500	1188	D
TACTICAL	9	166.8250		166.8250		A
AIR TO GROUND	6	169.1125		169.1125		A
<b>9. Prepared By (Resource Unit Leader)</b>			<b>Approved By (Planning Section Chief)</b>		<b>Date</b>	<b>Time</b>
SUE WILDER/STEVE WELLS			TERRY PIERCE/DAVE DOBBS		04/20/2017	1900

## Division/Group Assignment List (ICS 204 WF)

<b>1. Incident Name:</b>			<b>3.</b>			
COWBELL			<b>Branch:</b>	<b>Division/Group:</b>  <b>IA OASIS STAGING</b>		
<b>2. Operational Period: DAY</b>						
Date/Time From: 04/21/2017 0800 FRI		Date/Time To: 04/21/2017 2000 FRI				
<b>4. Operations Personnel</b>						
<b>OPERATIONS CHIEF</b>	PAUL REYNOLDS		<b>DEPUTY OPERATIONS CHIEF</b>	DWIGHT SNOW		
<b>STRATEGIC OPERATIONS</b>	JAMES DURRWACHTER		<b>PLANNING OPERATIONS</b>	MICHAEL HEARD		
<b>AIR OPERATIONS BRANCH DIRECTOR</b>	JOHN BRAGG MIKE MOWERY (T)		<b>DIVISION / GROUP SUPERVISOR</b>	KRIS WILSON		
<b>7. Special Instructions:</b>						
<p>Be prepared for extended staffing as needed. Coordinate with Field OPS to determine need. Follow tracked vehicle requirement restrictions. Establish and maintain LCES during operational period. Utilize MIST tactics as outlined in Fire Operations Guide for BICY. <b>All initial attack will go through BICY Fire Dispatch Center. Incident within an Incident will go through Cowbell communications.</b></p>						
<b>8. Division/Group Communication Summary</b>						
Function	Channel	RX Frequency N/W	RX Tone/NAC	TX Frequency N/W	TX Tone/NAC	Mode
BICY RPTR	1	172.4250	1035	170.1000	1035	D
BICY RPTR	2	172.4250	1035	171.6250	1035	D
PANTHER RPTR	7	164.6250	1188	163.1500	1188	D
TACTICAL	9	166.8250		166.8250		A
AIR TO GROUND	6	169.1125		169.1125		A
<b>9. Prepared By (Resource Unit Leader)</b>			<b>Approved By (Planning Section Chief)</b>		<b>Date</b>	<b>Time</b>
SUE WILDER/STEVE WELLS			TERRY PIERCE/DAVE DOBBS		04/20/2017	1900

## Division/Group Assignment List (ICS 204 WF)

<b>1. Incident Name:</b>			<b>3.</b>			
COWBELL			<b>Branch:</b>		<b>Division/Group:</b>  <b>K</b>	
<b>2. Operational Period: DAY</b>						
Date/Time From: 04/21/2017 0800 FRI		Date/Time To: 04/21/2017 2000 FRI				
<b>4. Operations Personnel</b>						
<b>OPERATIONS CHIEF</b>		PAUL REYNOLDS		<b>DEPUTY OPERATIONS CHIEF</b>		DWIGHT SNOW
<b>PLANNING OPERATIONS CHIEF</b>		MICHAEL HEARD		<b>STRATEGIC OPERATIONS</b>		JIM DURRWACHTER
<b>AIR ATTACK SUPERVISOR</b>				<b>DIVISION/GROUP SUPERVISOR</b>		TIM NUTLEY
<b>5. Resources Assigned this Period</b>						
Strike Team / Task Force / Resource Designator		LWD	Leader	Number Persons	Drop Off PT./Time	Pick Up PT./Time
UNSTAFFED						
<b>6. Control Operations/Work Assignments:</b>						
<p>Task:</p> <ul style="list-style-type: none"> <li>• Coordinate with Florida Forestry Service representative for proposed line construction on private land.</li> <li>• Keep fire contained south of BICY boundary and private lands to minimize impacts.</li> </ul> <p>Purpose:</p> <ul style="list-style-type: none"> <li>• To protect structures on private lands.</li> </ul> <p>End State:</p> <ul style="list-style-type: none"> <li>• Confine fire perimeter to reduce impacts to private land ownership.</li> </ul>						
<b>7. Special Instructions:</b>						
<p>Establish and maintain LCES during operational period. Coordinate with Field OPS in the event swing shift resources are required. Follow tracked vehicle requirements restriction. Utilize MIST tactics as outlined in Fire Operations Guide for BICY.</p>						
<b>8. Division/Group Communication Summary</b>						
Function	Channel	RX Frequency N/W	RX Tone/NAC	TX Frequency N/W	TX Tone/NAC	Mode
COMMAND	12	166.6125		168.4000	110.9	A
COMMAND	13	168.7000		170.9750	110.9	A
TACTICAL	8	166.7500		166.7500		A
AIR TO GROUND	10	168.3250		168.3250		A
<b>9. Prepared By (Resource Unit Leader)</b>			<b>Approved By (Planning Section Chief)</b>		<b>Date</b>	<b>Time</b>
SUE WILDER/STEVE WELLS			TERRY PIERCE/DAVE DOBBS		04/20/2017	1900

## Division/Group Assignment List (ICS 204 WF)

<b>1. Incident Name:</b>			<b>3.</b>			
COWBELL			<b>Branch:</b>		<b>Division/Group:</b>  <b>PARLIAMENT / MISC FIRE</b>	
<b>2. Operational Period: DAY</b>						
Date/Time From: 04/21/2017 0800 FRI		Date/Time To: 04/21/2017 2000 FRI				
<b>4. Operations Personnel</b>						
<b>OPERATIONS CHIEF</b>		PAUL REYNOLDS		<b>DEPUTY OPERATIONS CHIEF</b>		
				DWIGHT SNOW		
<b>PLANNING OPERATIONS</b>		MICHAEL HEARD		<b>STRATEGIC OPERATIONS</b>		
				JIM DURRWACHTER		
<b>AIR OPERATIONS BRANCH DIRECTOR</b>				<b>DIVISION / GROUP SUPERVISOR</b>		
<b>5. Resources Assigned this Period</b>						
Strike Team / Task Force / Resource Designator		LWD	Leader	Number Persons	Drop Off PT./Time	Pick Up PT./Time
UNSTAFFED						
<b>6. Control Operations/Work Assignments:</b>						
<p>Task:</p> <ul style="list-style-type: none"> <li>• Patrol and monitor fires on BICY and FPWR with aviation and ground assets as directed by lead OSC commensurate with values at risk</li> <li>• Monitor fires for further suppression management action</li> </ul> <p>Purpose:</p> <ul style="list-style-type: none"> <li>• Assure suppression action taken limits environmental impact, consistent with MIST tactics</li> </ul> <p>End State:</p> <ul style="list-style-type: none"> <li>• Protect human life</li> <li>• Minimize damage to public and private property</li> <li>• Minimize environmental damage to protect habitat of threatened and endangered species</li> </ul>						
<b>7. Special Instructions:</b>						
<p>Follow tracked vehicle requirement restrictions. Establish and maintain LCES during operational period. Utilize MIST tactics as outlined in Fire Operations Guide for BICY.</p>						
<b>8. Division/Group Communication Summary</b>						
Function	Channel	RX Frequency N/W	RX Tone/NAC	TX Frequency N/W	TX Tone/NAC	Mode
BICY RPTR	2	172.4250	1035	171.6250	1035	D
TACTICAL	11	166.7250	0659	166.7250	0659	D
AIR TO GROUND	10	168.3250		168.3250		A
<b>9. Prepared By (Resource Unit Leader)</b>			<b>Approved By (Planning Section Chief)</b>		<b>Date</b>	<b>Time</b>
SUE WILDER/STEVE WELLS			TERRY PIERCE/DAVE DOBBS		04/20/2017	1900

## Division/Group Assignment List (ICS 204 WF)

<b>1. Incident Name:</b>			<b>3.</b>			
COWBELL			<b>Branch:</b>		<b>Division/Group:</b>  <b>STRUCTURE PROTECTION</b>	
<b>2. Operational Period: DAY</b>						
Date/Time From: 04/21/2017 0800 FRI		Date/Time To: 04/21/2017 2000 FRI				
<b>4. Operations Personnel</b>						
<b>OPERATIONS CHIEF</b>		PAUL REYNOLDS		<b>DEPUTY OPERATIONS CHIEF</b>		DWIGHT SNOW
<b>PLANNING OPERATIONS</b>		MICHAEL HEARD		<b>STRATEGIC OPERATIONS</b>		JIM DURRWACHTER
<b>AIR OPERATIONS BRANCH DIRECTOR</b>				<b>DIVISION/GROUP SUPERVISOR</b>		SHAWN NAGLE JACOB SOHR (T)
<b>5. Resources Assigned this Period</b>						
Strike Team / Task Force / Resource Designator		LWD	Leader	Number Persons	Drop Off PT./Time	Pick Up PT./Time
SLIMER SUPPRESSION BUGGY E-80		04/25	JOSH MANLEY	3	ICP/0800	ICP/2000
<b>6. Control Operations/Work Assignments:</b>						
<p>Task:</p> <ul style="list-style-type: none"> <li>Review structure protection plan.</li> <li>Assess structure protection needs west of the Plains Trail (alternate line) and west of the Perocchi-Bear Island Grade (Contingency line).</li> </ul> <p>Purpose:</p> <ul style="list-style-type: none"> <li>Structure preparation around Baker Cabin.</li> </ul> <p>End State:</p> <ul style="list-style-type: none"> <li>Protect human life.</li> </ul> <p>Minimize damage to public and private property and infrastructure.</p>						
<b>7. Special Instructions:</b>						
Be prepared for extended staffing if needed. Coordinate with Field OPS to determine need. Follow tracked vehicle requirement restrictions. Establish and maintain LCES during operational period. Utilize MIST tactics as outlined in Fire Operations Guide for BICY.						
<b>8. Division/Group Communication Summary</b>						
Function	Channel	RX Frequency N/W	RX Tone/NAC	TX Frequency N/W	TX Tone/NAC	Mode
BICY RPTR	1	172.4250	1035	170.1000	1035	D
BICY RPTR	2	172.4250	1035	171.6250	1035	D
PANTHER RPTR	7	164.6250	1188	163.1500	1188	D
TACTICAL	9	166.8250		166.8250		A
AIR TO GROUND	6	169.1125		169.1125		A
<b>9. Prepared By (Resource Unit Leader)</b>			<b>Approved By (Planning Section Chief)</b>		<b>Date</b>	<b>Time</b>
SUE WILDER/STEVE WELLS			TERRY PIERCE/DAVE DOBBS		04/20/2017	1900



## Division/Group Assignment List (ICS 204 WF)

<b>1. Incident Name:</b>			<b>3.</b>			
COWBELL			<b>Branch:</b>		<b>Division/Group:</b>  <b>Z</b>	
<b>2. Operational Period: DAY</b>						
Date/Time From: 04/21/2017 0800 FRI		Date/Time To: 04/21/2017 2000 FRI				
<b>4. Operations Personnel</b>						
<b>OPERATIONS CHIEF</b>		PAUL REYNOLDS		<b>DEPUTY OPERATIONS CHIEF</b>		DWIGHT SNOW
<b>PLANNING OPERATIONS</b>		MICHAEL HEARD		<b>STRATEGIC OPERATIONS</b>		JIM DURRWACHTER
<b>AIR OPERATIONS BRANCH DIRECTOR</b>		JOHN BRAGG MIKE MOWERY (T)		<b>DIVISION / GROUP SUPERVISOR</b>		MICAH JOHNSON CHRIS RICHARDS (T)
<b>5. Resources Assigned this Period</b>						
Strike Team / Task Force / Resource Designator		LWD	Leader	Number Persons	Drop Off PT./Time	Pick Up PT./Time
TFLD JAMES R WETTSTAED O-221		05/04	JAMES WETTSTAED	1	ICP/0800	ICP/2000
HCM MODULE - SUPPRESSION - NPS #1 O-21		04/23	JOSH HAMPTON	6	ICP/0800	ICP/2000
ENG3 ENGINE - T3 - CA-SHF - 51 E-99		04/23	MIKE ANDERSON	5	ICP/0800	ICP/2000
ENG3 ENGINE - T3 - CA-SHF - 321 E-98		04/23	KENNETH VAUGH	5	ICP/0800	ICP/2000
ENG3 ENGINE - T3 - 335 E-100		04/23	BRYAN REDDISH	5	ICP/0800	ICP/2000
SEMINOLE SUPPRESSION BUGGY E-60		04/30	MIKE LIGHTSEY	2	ICP/0800	ICP/2000
SEMINOLE SUPPRESSION BUGGY E-139		04/26	ORLANDO CLEVELAND	1	ICP/0800	ICP/2000
TRANSPORT BUGGY E-38		04/25	CLINT WEEKS	1	ICP/0800	ICP/2000
TRANSPORT BUGGY E-39		04/25	CAPTAIN STEVE-CLINTON WEAKS	1	ICP/0800	ICP/2000
TRANSPORT BUGGY E-40		04/25	BOBBY WEEKS	1	ICP/0800	ICP/2000
TRANSPORT BUGGY E-41		04/25	VICTOR ROBINSON	1	ICP/0800	ICP/2000
READ O-154		04/25	JOANNE YOUNG	1	ICP/0800	ICP/2000
EMTF O-195		04/21	GENE-PAUL MATSON	1	ICP/0800	ICP/2000
EMPF O-220		05/03	CLARK WADE	1	ICP/0800	ICP/2000
SOFR O-194		05/02	MARK HELM	1	ICP/0800	ICP/2000
SOFR (T) O-76		04/28	JUSTIN PHIPPEN	1	ICP/0800	ICP/2000
<b>8. Division/Group Communication Summary</b>						
Function	Channel	RX Frequency N/W	RX Tone/NAC	TX Frequency N/W	TX Tone/NAC	Mode
COMMAND	12	166.6125		168.4000	110.9	A
COMMAND	13	168.7000		170.9750	110.9	A
TACTICAL	8	166.7500		166.7500		A
AIR TO GROUND	10	168.3250		168.3250		A
<b>9. Prepared By (Resource Unit Leader)</b>			<b>Approved By (Planning Section Chief)</b>		<b>Date</b>	<b>Time</b>
SUE WILDER/STEVE WELLS			TERRY PIERCE/DAVE DOBBS		04/20/2017	1900

## Division/Group Assignment List (ICS 204 WF)

<b>1. Incident Name:</b>			<b>3.</b>			
COWBELL			<b>Branch:</b>		<b>Division/Group:</b>  <b>Z</b>	
<b>2. Operational Period: DAY</b>						
Date/Time From: 04/21/2017 0800 FRI		Date/Time To: 04/21/2017 2000 FRI				
<b>4. Operations Personnel</b>						
<b>OPERATIONS CHIEF</b>		PAUL REYNOLDS		<b>DEPUTY OPERATIONS CHIEF</b>		DWIGHT SNOW
<b>PLANNING OPERATIONS</b>		MICHAEL HEARD		<b>STRATEGIC OPERATIONS</b>		JIM DURRWACHTER
<b>AIR OPERATIONS BRANCH DIRECTOR</b>		JOHN BRAGG MIKE MOWERY (T)		<b>DIVISION / GROUP SUPERVISOR</b>		MICAH JOHNSON CHRIS RICHARDS (T)
<b>5. Resources Assigned this Period</b>						
Strike Team / Task Force / Resource Designator		LWD	Leader	Number Persons	Drop Off PT./Time	Pick Up PT./Time
<b>6. Control Operations/Work Assignments:</b>						
<p>Task:</p> <ul style="list-style-type: none"> <li>Patrol and conduct mop up 25 ft. from control line</li> </ul> <p>Purpose:</p> <ul style="list-style-type: none"> <li>To keep fire south of Preserve Boundary and west of ADD 17 to protect private land with structures</li> </ul> <p>End State:</p> <ul style="list-style-type: none"> <li>Control fire to eliminate threats to Seminole Tribe of Florida and private property</li> </ul>						
<b>7. Special Instructions:</b>						
Establish and maintain LCES during operational period. Coordinate with Field OPS in the event swing shift resources are required. Follow tracked vehicle requirements restriction. Utilize MIST tactics as outlined in Fire Operations Guide for BICY.						
<b>8. Division/Group Communication Summary</b>						
Function	Channel	RX Frequency N/W	RX Tone/NAC	TX Frequency N/W	TX Tone/NAC	Mode
COMMAND	12	166.6125		168.4000	110.9	A
COMMAND	13	168.7000		170.9750	110.9	A
TACTICAL	8	166.7500		166.7500		A
AIR TO GROUND	10	168.3250		168.3250		A
<b>9. Prepared By (Resource Unit Leader)</b>			<b>Approved By (Planning Section Chief)</b>		<b>Date</b>	<b>Time</b>
SUE WILDER/STEVE WELLS			TERRY PIERCE/DAVE DOBBS		04/20/2017	1900

# AIR OPERATIONS SUMMARY

OPERATIONAL PERIOD DATE: 04-21-2017

0800-2000

1. INCIDENT NAME: Cowbell	2. PREPARED BY: Mike Mowery      PREPARED DATE/TIME: 04/20/2017 1800	3. Sunrise: 0657    Sunset: 1951
<p>4. REMARKS (Safety Notes, Hazards, Air Operations Special Equipment., etc.): Medivac Aircraft: <b>6HX</b>  MTR- Located along state road 29. Fire Dispatch gets MTR activity every morning  Do not over fly structures with external load missions.  All aircraft should use strobes and running lights in smoky conditions.  Hazards: Snags, non-incident aircraft, and winds.  Contract helicopter working special use permit in North Central portion of BICY. Area identified on pilot briefing board. ATGS has air to air communications.  <b>Cease all operations at sunset</b></p>		<p>5. Squawk 1255  (A-20) TFR—7/7786 ZMA FL, Airspace 25 nm NE of Ochopee SFC 3000ft. Contact 118.825  NOTAM – 04/054 – Airspace firefighting aircraft 5nm of (9FL7) SFC 2000ft.</p>

6. PERSONNEL	Phone	7. FREQUENCIES	AM	FM	8. FIXED WING	FAA#/Base
<b>AOBD: John Bragg</b> <b>AOBD-T Mike Mowery</b> <b>ASGS: Matt Clinton</b>	423-483-2798 870-615-0287 208-634-9414	Air/Air Rotor (A-5)	123.575		Air Attack- Air Attack	197GB (A-18)—Aero Commander MKY 4566M (A-10) --Baron MKY
ATGS: Steve Little ATGS: Jay Lindgren ATGS (T): Trevor Pollock	828-778-2077 406-461-1652 435-592-4919	Air/Air Fixed Wing (A-6)	118.825		T-801 (A-3) T-493 (A-21)	Seat --IMM, Start 0900 Seat —IMM, Start 0900
<u>Oasis Helibase (9FL7)</u> HEB1 Mark Oetzmann HEB1(T) Jay Thatcher <u>Immokalee Airport</u> SEMG Jack Benzilio SEMG(T) Michael Sellers HMGB—Tracy Elliot HMGB – Brian Butler	239-695-0278 208-315-5030 970-903-7922 970-799-1232 501-580-9608 303-910-7619 970-946-8068	Air/Ground Cowbell		168.3250 RX/TX (A)  169.1125 RX/TX (A) 167.9500 RX/TX (A)		
Big Cypress Fire Dispatch	239-695-9280 x 104	Air/Ground IA Air/Ground Aerial Ignition (A-11)		169.7250 RX N1514  163.3875 TX N1738	Flight Following (BICY)	
		Air/Guard		168.6250 RX/TX Tone 110.9	Deck	166.7750

## 9. HELICOPTERS (Use Additional Sheets As Necessary)

FAA N# or Designator	TY	MAKE/MODEL	BASE	START	REMARKS	FAA N# or Designator	TY	MAKE/MODEL	BASE	START	REMARKS
28HX (A-17)	2	Bell 205	Oasis	0900	Crew/Bucket	1KA (A-7)	1	K-MAX	Oasis	0900	Bucket
16HX (A-9)	2	Bell 205	Oasis	0900	Crew/Bucket	612CK (A-8)	1	S-61	IMM	0900	Tanked
0HH (A-28)	3	Bell 206B3	Oasis	0800	Map/Recon	718 (A-16)	1	CH-54	IMM	0900	Tanked

## 10. TASK/MISSION/ASSIGNMENT (Use ICS-220a if additional space needed; Type/Function includes: Air Tactical, Retardant, Recon, Personnel Transport, Water Dropping, etc.)

TYPE/FUNCTION	NAME OF PERSONNEL OR CARGO (if applicable) OR INSTRUCTIONS FOR TACTICAL AIRCRAFT	MISSION START	FLY FROM	FLY TO
Mapping/Reconnaissance	As Requested	0930		
Water Drops	As Requested	0930		

## INCIDENT RADIO COMMUNICATIONS PLAN (ICS 205)

3. Operational Period: DAY									
Date/Time From: 04/21/2017 0800			Date/Time To: 04/21/2017 2000						
Zone Group	Ch #	Function	Assignment	RX Freq	RX Tone/NAC	TX Freq	TX Tone/NAC	Mode (A,D, or M)	Remarks
	1	CARNS RPT	Initial Attack	172.4250	1035	170.1000	1035	D	BICY Preserve RPTR
	2	OASIS RPT	IA/Parliament	172.4250	1035	171.6250	1035	D	BICY Preserve RPTR
	3	BCY LCL	Structure/Div S	166.7750	No Tone	166.7750	No Tone	A	
	4	BICY TAC 1	Division A /D	168.6000	No Tone	168.6000	No Tone	A	
	5	BICY LCL 2	DIVISION G	168.2500	No Tone	168.2500	No Tone	A	
	6	A/G 59	Initial Attack	169.1125	No Tone	169.1125	No Tone	A	
	7	Panther RPT	Initial Attack	164.6250	1188	163.1500	1188	D	Panther Refuge RPTR
	8	PANTHER TAC 1	DIVISION Z/K	166.7500	No Tone	166.7500	No Tone	A	
	9	PANTHER TAC 2	Initial Attack	166.8250	No Tone	166.8250	No Tone	A	
	10	A/G 85	ALL DIVISIONS	168.3250	No Tone	168.3250	No Tone	A	
	11	Everglades TAC 1	Parliament Misc.	166.7250	0659	166.7250	0659	D	
	12	CMD 12	DIVISION A/Z	166.6125	No Tone	168.4000	110.9	A	Command RPTR-Linked
	13	CMD 13	DIVISION D/G/Z	168.7000	No Tone	170.9750	110.9	A	Command RPTR-Linked
	14	A/G	Aerial Ignition	167.9500	No Tone	167.9500	No Tone	A	
	15	CMD 15	DIV G	173.0375	No Tone	167.3250	110.9	A	Command RPTR-Linked
	16	AIR GUARD		168.6250	No Tone	168.6250	110.9	A	
Name: MARK SPANN				Signature: /s/ Mark Spann					
				Date/Time: 04/20/2017 1600					

## STATE IA RADIO COMMUNICATIONS PLAN (ICS 205)

3. Operational Period: DAY									
Date/Time From: 04/21/2017 0800			Date/Time To: 04/21/2017 2000						
Zone Group	Ch #	Function	Assignment	RX Freq	RX Tone/NAC	TX Freq	TX Tone/NAC	Mode (A,D, or M)	Remarks
	1	CARNS RPT	Initial Attack	172.4250	1035	170.1000	1035	D	Preserve RPTR
	2	OASIS RPT	Initial Attack	172.4250	1035	171.6250	1035	D	Preserve RPTR
	3	BCY LCL	Structure/Div S	166.7750	No Tone	166.7750	No Tone	A	
	4	BICY TAC 1	Division A /D	168.6000	No Tone	168.6000	No Tone	A	
	5	BICY LCL 2	DIVISION G	168.2500	No Tone	168.2500	No Tone	A	
	6	A/G 59	Initial Attack	169.1125	No Tone	169.1125	No Tone	A	
	7	Panther RPT	Initial Attack Parliament	164.6250	1188	163.1500	1188	D	Panther Refuge RPTR
	8	PANTHER TAC 1	DIVISION Z/K	166.7500	No Tone	166.7500	No Tone	A	
	9	PANTHER TAC 2	Initial Attack	166.8250	No Tone	166.8250	No Tone	A	
	10	A/G 85	ALL DIVISIONS	168.3250	No Tone	168.3250	No Tone	A	
	11	Everglades TAC 1	Parliament Misc.	166.7250	0659	166.7250	0659	D	
	12	RED V22	STATE IA	154.2650	No Tone	154.2650	156.7	A	
	13	WHITE V21	STATE IA	154.2800	No Tone	154.2800	156.7	A	
	14	BLUE V23	STATE IA	154.2950	No Tone	154.2950	156.7	A	
	15	CMD 15	DIV G	173.0375	No Tone	167.3250	110.9	A	Command RPTR-Linked
	16	AIR GUARD		168.6250	No Tone	168.6250	110.9	A	
Name: MARK SPANN				Signature: /s/ Mark Spann					
				Date/Time: 04/20/2017 1800					

## MEDICAL PLAN (ICS 206)

<b>1. Incident Name:</b> Cowbell Fire		<b>2. Operational Period:</b> Date From: 04-21-17 Date To: 04-21-17 Time From: 0800 Time To: 2000					
<b>3. Medical Aid Stations:</b>							
Name	Location	Contact Number(s)/Frequency	Paramedics on Site?				
Shanna Ellis (MEDL)/Matt Moran (T)	Medical ICP	318-229-6515/907-887-1539	<input type="checkbox"/> Yes	<input checked="" type="checkbox"/> No			
Jim Stout (EMTF)/Adam White (EMPF)	Division G	480-296-1566/910-391-9053	<input checked="" type="checkbox"/> Yes	<input type="checkbox"/> No			
Frank Abel (EMPF)/Brandon Little (EMTF)	Division A/D	423-595-1578/815-575-1563	<input checked="" type="checkbox"/> Yes	<input type="checkbox"/> No			
Gene-Paul Matson (EMTF)/Clark Wade (EMTP)	Division Z	434-665-0444/804-387-6188	<input checked="" type="checkbox"/> Yes	<input type="checkbox"/> No			
Chris Santopietro/Bob Bruington (EMTFs)	Division IA (Oasis)	303-913-4149/801-782-3585	<input type="checkbox"/> Yes	<input checked="" type="checkbox"/> No			
Tom Christian (EMPF)/Brad Burns (EMTF)	Division IA (Deep Lake)	727-389-2481/479-427-1095	<input checked="" type="checkbox"/> Yes	<input type="checkbox"/> No			
<b>4. Transportation (indicate air or ground):</b>							
Ambulance Service	Location	Number(s)/Frequency	Level of Service				
Collier County EMS (ground)	Everglades City (Medic 61)	911	<input checked="" type="checkbox"/> ALS	<input type="checkbox"/> BLS			
Collier County Med-Flight (air)	Naples Airport	911	<input checked="" type="checkbox"/> ALS	<input type="checkbox"/> BLS			
6HX Bell 205 (air) medical evacuation	Oasis Heli-base	168.3250 (A/G 85)	<input type="checkbox"/> ALS	<input checked="" type="checkbox"/> BLS			
<b>5. Hospitals:</b>							
Hospital Name	Address	Contact Number(s)	Travel Time		Trauma Center	Burn Center	Helipad
			Air	Ground			
Physicians Regional Collier Blvd	8300 Collier Blvd. Naples, FL 34114 Lat:26°6.313'/Long: -81°41.106'	239-354-6000 (Main) 239-354-6190 (ER)	15	50	<input type="checkbox"/> Yes Level: _____	<input type="checkbox"/> Yes x No	x Yes <input type="checkbox"/> No
Physicians Regional Pine Ridge	6101 Pine Ridge Road, Naples 34119 Lat:26°12.833'/Long: -81°43.954'	239-348-4000 (Main) 239-304-4748 (ER)	15	50	<input type="checkbox"/> Yes Level: _____	<input type="checkbox"/> Yes x No	x Yes <input type="checkbox"/> No
Naples Community Hospital	350 7 <sup>th</sup> Street North, Naples 34102 Lat:26°9.046'/Long: -81°47.907'	239-513-7709 (Main) 239-436-5151 (ER)	15	60	X Yes Level: <u>2</u>	<input type="checkbox"/> Yes x No	x Yes <input type="checkbox"/> No
Jackson Memorial Hospital	1611 NW 12 Avenue, Miami Lat:25°47.508'/Long: -80°12.756'	305-585-1111 (Main) 305-585-6910 (ER)	20	60	X Yes Level: <u>1</u>	x Yes <input type="checkbox"/> No	x Yes <input type="checkbox"/> No
Kendal Regional Medical Center	11750 SW 40 <sup>th</sup> St., Miami 33175 Lat:25°43.916'/Long: -80°23.148'	305-223-3000 (Main) 305-227-5544 (ER)	20	50	X Yes Level: <u>1</u>	<input type="checkbox"/> Yes x No	X Yes <input type="checkbox"/> No
<b>6. Special Medical Emergency Procedures:</b>							
<b>Once any injury/illness has occurred:</b>							
<ul style="list-style-type: none"> <li>Report all injuries/illnesses to Division Supervisors (or designees) who will assume command and notify any assigned DIVS Medical Personnel and DIVS Safety Officer.</li> <li>DIVS will notify ICP Communications. <u>DO NOT USE THE INJURED PERSON'S NAME ON THE RADIO.</u></li> <li>ICP Communications will notify MEDL and Incident Safety Officer to assist with the coordination of further medical care and mode of transportation.</li> <li>Any on-Scene medical personnel will stabilize patient.</li> <li>Ambulance and/or air resources will be coordinated through ICP Communications, MEDL, and SOFI.</li> </ul>							
ICP: Contact Medical Unit with patient complaint/condition and location.							
<ul style="list-style-type: none"> <li><b>ASSIGNED MEDICAL PERSONNEL - CHECK IN WITH COMMUNICATIONS ON ARRIVAL TO LINE AND WHEN MOVED BY DIVS OR SAFETY. SPECIFY IF STAGING IN PLACE OR ROVING SECTIONS.</b></li> <li><b>Request that FFTR/Engine Crews or Single Resources let DIVS know if they have any EMTS or Paramedics and if they have equipment with them.</b></li> </ul>							
<b>7. Prepared by (MEDL):</b> Matthew Moran (T)/ Shanna Ellis Signature: <i>/s/ Matthew Moran Shanna F. Ellis</i>							
<b>8. Approved by (SOF1):</b> Brian Beisel Signature: <i>/s/ Brian Beisel</i>							
ICS 206	IAP Page _____	Date/Time: <u>04/20/2017</u>					

## **TRAINING MESSAGE**

**TRAINEES: IF YOU ARE WORKING ON A POSITION TASKBOOK AND HAVE NOT CHECKED IN WITH THE TRAINING SECTION, PLEASE DO SO AS SOON AS POSSIBLE, WORKING WITH A TRAINING SPECIALIST CAN HELP TO ENSURE YOUR POSITION TASKBOOK AND OTHER RELATED DOCUMENTATION ARE CORRECT AND THAT THE TRAINING ASSIGNMENT IS CAPTURED IN E-ISUITE AS PART OF YOUR HISTORICAL TRAINING RECORD.**

**ITEMS TO BRING TO TRAINING SECTION; POSITION TASKBOOK AND QUALIFICATION CARD (REDCARD).**

**TRAINING SECTION IS LOCATED IN TRAILER WITH PLANS, GISS AND ITSS.**

**DEBRA BURGOS, TRAINING SPECIALIST      404-987-3256**

**MARY LEATHERS, TRAINING SPECIALIST      979-218-3030**

**“You have brains in your head. You have feet in your shoes. You can steer yourself any direction you choose.”**

**Dr. Seuss**

# Tentative DMOB list 4/21 to 4/25

REQUEST #	RESOURCE NAME	ITEM CODE	DEMOB DATE	TRAVEL METHOD	JETPORT
E-59	ENGINE - T6 - CSP 661	ENG6	04/21/2017	AOV	CAE
E-1011	SEMINOLE PERTROLIUM-FUEL TENDER	FT1	04/21/2017		
O-26	MESERTH, MORGAN ALOIS	ABRO	04/21/2017	A/R	RDM
O-65	BLAKE, SUSAN M	PIO2	04/21/2017	AOV	TLH
O-17	MED KIT STOUT & JimStout	EMTF	04/22/2017	A/R	PHX
O-40	SEEHASE, ROBERT J	SEC1	04/22/2017	AOV	DLH
O-117	REYNOLDS, NOLAN	TFLD	04/22/2017	A/R	ACV
O-118	MATHESON, NICHOLAS W	TFLD	04/22/2017	A/R	SMF
O-195	MATSON, GENE-PAUL	EMTF	04/22/2017	POV	CHO
E-64	ATV - FIRE - SWAMP BUGGY 2	ATV	04/23/2017	AOV	
E-89	ENGINE - T6 - 607	ENG6	04/23/2017	AOV	
O-18	BRUINGTON, ROBERT	EMTF	04/23/2017	A/R	SLC
O-124	BARR, JESSE M	HEQB	04/23/2017	A/R	TUS
O-190.40	BAKER, JARED LEATH	BCMG	04/23/2017	AIR	BNA
O-8	BROWNLOW, SCOTT R	RADO	04/24/2017	A/R	ABQ
O-21	MODULE - SUPPRESSION - NPS #1	HCM	04/24/2017	AOV	LIT
O-113	RAY, JAMES M	THSP	04/24/2017	A/R	BZN
O-129	DARGAN, CHRIS	THSP	04/24/2017	A/R	HLN
O-190.54	SOLBERG, LESLIE LOUISE	PROC	04/24/2017	A/R	PDX
O-229	DOBBS, DAVE E	PSC1	04/24/2017	A/R	PHX
E-39	CAPTAIN STEVE'S SWAMP BUGGY AD.	ATV	04/25/2017	OTH	
E-40	CAPTAIN STEVE'S SWAMP BUGGY AD.	ATV	04/25/2017	OTH	
E-65	ATV - FIRE - SWAMP BUGGY 3	ATV	04/25/2017	AOV	
E-80	ATV - PANTHER FIRE BUGGY (SLIMER)	ATV	04/25/2017	AOV	
E-83	GEO-BOY	MAST	04/25/2017	OTH	
O-1	NEWLAND, STEVEN M	HECM	04/25/2017	POV	MIA
O-2	CARNALL, ROBERT	HMGB	04/25/2017	POV	MIA
O-3	GILL, ANDREW P	HMGB	04/25/2017	POV	MIA
O-4	DECK, BRIAN	HMGB	04/25/2017	AOV	FAI
O-5	CORNETT, SUSAN E	LSC2	04/25/2017	A/R	SHV
O-125	SHACKELFORD, ROBERT E	STOP	04/25/2017	AOV	ORF
O-127	CZERNIK, HELEN	INBA	04/25/2017	A/R	ORF
O-128	MCHAN, JASON	EQPM	04/25/2017	AOV	TYS
O-135	FOCO JR, DONALD HOWARD	SOFR	04/25/2017	A/R	PLN
O-144	WORLEY, WILLARD R	TFLD	04/25/2017	A/R	LEX
<b>O-190.18</b>	<b>HICKERSON, HENRY B</b>	<b>DMOB</b>	<b>04/25/2017</b>	<b>AIR</b>	<b>ROA</b>
O-1002	GOODWIN, FRED	PILO	04/25/2017	????	



## SPECIFIC MINIMUM IMPACT SUPPRESSION TACTICS FOR BIG CYPRESS NATIONAL PRESERVE

In order to meet BICY General Management Plan and fire management goals, the following Minimum Impact Suppression Tactics (MIST) have been developed for broad use across the Preserve:

- Select procedures, tools, and equipment that least impact the environment.
- Give serious consideration to the use of water (e.g., cypress strands, SEATS, other aircraft) as a tactic.
- Consider “herding” the fire into lighter fuels to facilitate the use of aircraft.
- In **light fuels**:
  - consider the use of natural barriers
  - consider burn outs
  - constantly recheck cold trailed fireline
  - if vehicle traffic is required, consider limiting use to ATVs/UTVs
- In **medium/heavy fuels**:
  - consider use of natural barriers
  - minimize bucking to establish fireline; preferably build line around logs
- **Aerial fuels**:—brush, trees, and snags:
  - adjacent to fireline: limb only enough to prevent additional fire spread
  - inside fireline: remove or limb only those fuels which if ignited, would have potential to spread fire outside the fireline
- **Trees, burned trees, and snags**:
  - minimize cutting of trees, burned trees, and snags
  - live trees will not be cut, unless determined they will cause fire spread across the fireline or seriously endanger workers. If tree cutting occurs, cut stumps flush with the ground
  - scrape around tree bases near fireline if hot and likely to cause fire spread
  - identify hazard trees with either an observer, flagging, and/or glowsticks
- **When using indirect attack**:
  - do not fall snags on the intended unburned side of the constructed fireline, unless they are an obvious safety hazard to crews working in the vicinity
  - on the intended burnout side of the line, fall only those snags that would reach the fireline should they burn and fall over.
  - pre-emptive burnouts should be done with careful consideration of the tradeoffs with letting the fire burn in a natural mosaic, and implemented with that in mind.
  - large scale burnouts should be done in consultation with the Agency Rep and/or Natural Resource Advisor.
  - review items listed above (i.e., aerial fuels; brush, trees, and snags)
- A resource advisor will be assigned to each wildland fire within or with the potential to burn into **eligible/proposed/designated wilderness** areas. Resource advisors will:
  - ensure incident commander and ground resources are aware of wilderness areas and management direction.
  - coordinate with fire suppression personnel to ensure appropriate suppression actions are used that minimize the rehabilitation requirements.
  - support appropriate rehabilitation actions prior to release of suppression forces.
  - Ensure that a Minimum Requirements Analysis has been conducted for any fire-related activities in wilderness and that analysis results are communicated.

**PHONE LIST - COWBELL FIRE** as of 4/20/2017

Position	Name	Phone Number	Position	Name	Phone Number
<b>COMMAND</b>			<b>OPERATIONS</b>		
Incident Commander	Mike Wilkins	828-421-5026	Ops Section Chief	Paul Reynolds	662-418-9743
Incident Commander (t)	Andy Baker	706-400-2150	Ops Section Chief Deputy	Dwight Snow	352-516-4969
Deputy Incident Commander	Mark Morales	479-264-7991	Planning Ops	Michael Heard	334-488-5966
Liaison Officer	Andy Gaston	706-508-2363	Division A/D	Kerry Clark	205-272-2424
Public Information	Terry Krasko	479-280-0452	Division G	Vic Doig	352-493-3155
Public Information	Michael R Williams	470-599-3926	Division K	Tim Nutley	479-227-0893
Safety Officer	Brian Beisel	270-978-1610	Division Initial Attack	Chris Wilson	918-314-7264
Safety Officer	Ivan Cupp	405-990-7155	Division Structure Protection	Shawn Nagle	662-231-4024
			Divison Z	Micah Johnson	360-301-4728
			<b>AIR OPERATIONS</b>		
<b>PLANNING</b>			Air Ops Branch Director	John Bragg	423-483-2798
Chief	Terry Pierce	423-596-2694	Air Ops Branch Director (t)	Mike Mowry	870-214-0034
Chief	Dave Dobbs	928-699-5706	Air Tactical Group Supervisor	Steve Little	
Resource Unit Leader	Sue Wilder	985-264-2288	Air Support Group Supervisor	Matt Clinton	
Resource Unit Leader	Steve Wells	803-603-0502	Oasis Helibase Manager	Mark Oetzmann	208-315-5030
Situation Unit Leader	Michael J Williams	828-835-0094			
Fire Behavior Analyst	Glenn Fortenberry	501-762-3751	<b>LOGISTICS</b>		
Air Resource Advisor	Andrea Holland	970-274-0010	Chief	Cindy Schiffer	540-230-1269
READ	JoAnne Young	970-422-2246	Chief	Bill Lisowsky	270-816-7417
IMET	Steven Ippoliti	954-826-9405	Chief (t)	Terry Holsclaw	435-201-4443
GISS	Alan Smith	903-261-3294	Chief (t)	Chris Alford	571-334-8549
GISS	Katy McCurdy	404-210-3996	Ground Support Unit Leader	Joe Emberson	580-317-5315
Demob	Henry Hickerson	540-798-2218	Ground Support Unit Leader	Randy Chapin	601-405-5711
Status CheckIn	Allison Cochran	256-566-5509	Ground Support Unit		772-631-2568
Training Specialist	Debra Burgos	404-987-3256	Equipment Manager		
Technology Support	Dan Leduc	318-613-0362	Ordering Manager	Sandy Rhodes	501-282-0085
Technology Support	Scotty Grest	770-595-1521	Ordering Manager	Natalie Broce	540-968-3734
Status Checkin	Teresa Moss	828-361-5301	Supply Unit Leader	Bill Kitchings	601-741-2296
			Facilities (t)	Jared Baker	270-804-5182
<b>FINANCE</b>			Facilities (t)	Jamiel Jones	
Chief	Randee Olson	218-370-0561	Communications	Mark Spann	936-208-0488
Time Unit Leader	Sandra Fix	540-460-2509	Comms Trailer		772-631-2573
Cost Unit Leader	Susan Deimel	501-337-3598	Medical Unit Leader	Shanna Ellis	318-229-6515
Comp/Claims	Donna Rogers	803-295-3033	Security Manger	David Clark	573-714-5142
Procurement	Leslie Solberg	360-553-9830	Security Mananger (t)	RJ Seehase	414-739-5696
			Security	Chris Kelly	978-580-9245
			Security	Bain Bannon	318-446-1759
			Security	Sam Maldonado	909-522-6905
			Security	Stanley Garner	352-672-1036
			Big Cypress National Preserve	Duty Officer	239-719-0241

81°20'W

81°10'W

81°0'W

80°50'W

Immokalee

21,815 acres  
04/21/2017  
0800 hrs

# Cowbell Fire Vicinity Map

U.S. Department of the Interior  
Big Cypress National Preserve  
33100 Tamiami Trail East  
Ochopee, FL 34141



North American Datum 1983  
Map Created 4/20/2017



No warranty is made by the National Park Service (NPS) as to the accuracy, reliability, or completeness of this data for individual use or aggregate use with other data, or for purposes not intended by NPS.



26°20'N

26°20'N

26°10'N

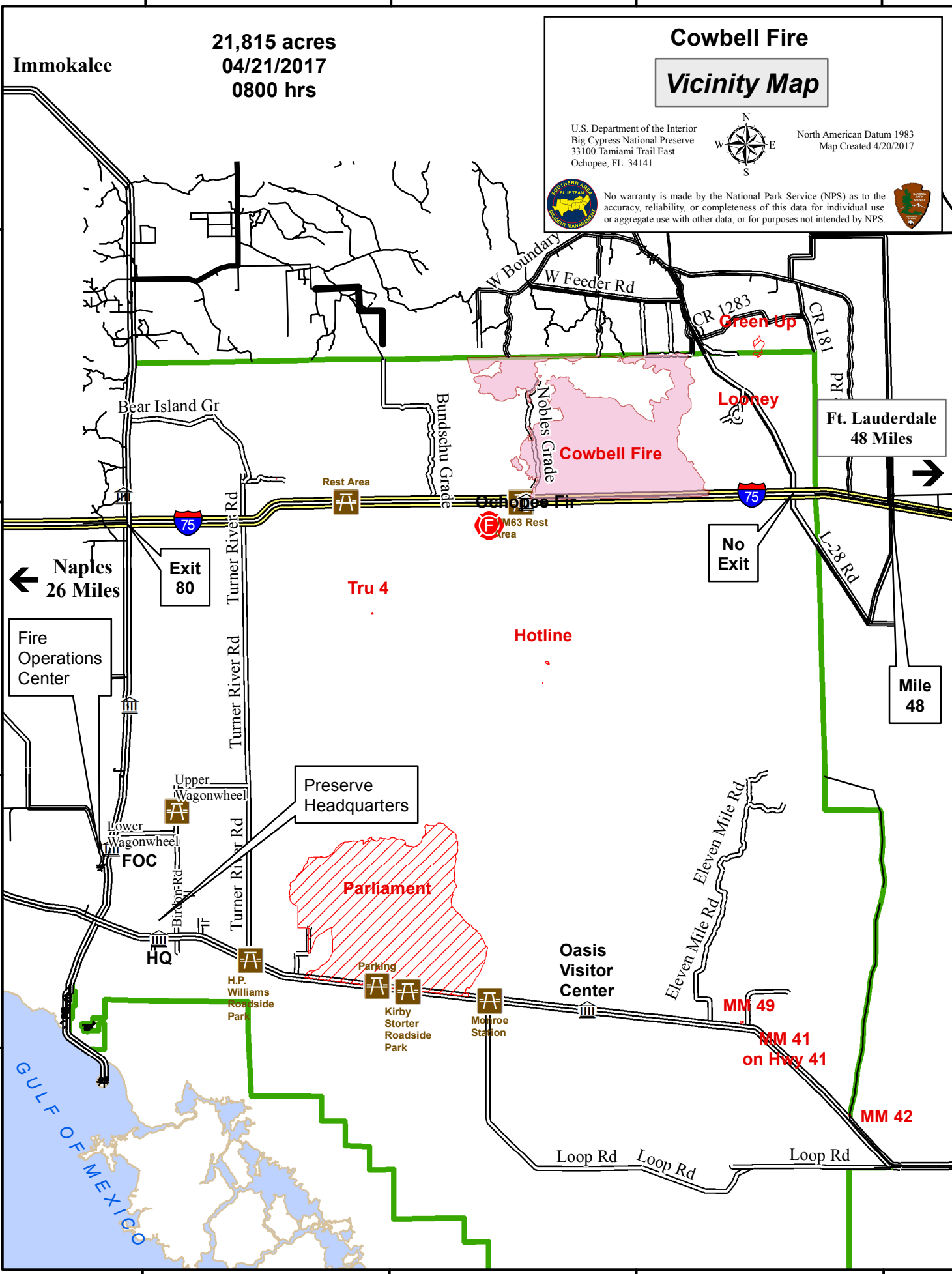
26°10'N

26°0'N

26°0'N

25°50'N

25°50'N



Ft. Lauderdale  
48 Miles

Mile  
48

Naples  
26 Miles

Fire  
Operations  
Center

Preserve  
Headquarters

Oasis  
Visitor  
Center

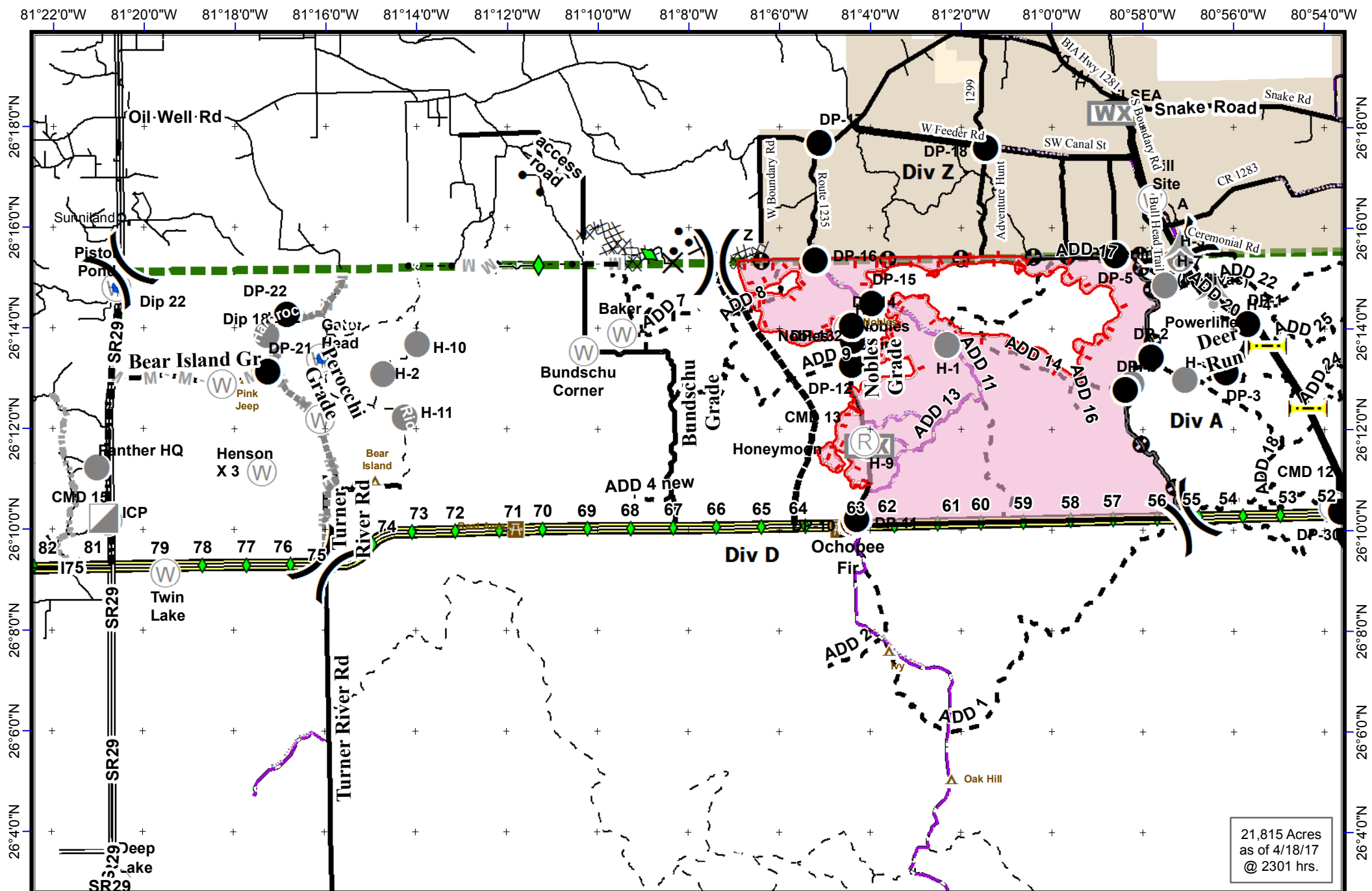
GULF OF MEXICO

81°20'W

81°10'W

81°0'W

80°50'W



21,815 Acres  
as of 4/18/17  
@ 2301 hrs.

**Cowbell Fire**  
FL-BCP-017033

**IAP Map**  
April 21, 2017  
Day Shift



- ▬ Uncontrolled Fire Edge
- ▬ Completed Line
- M - M** Mastication Line
- X Completed Disk Line
- ▬ Proposed Line
- Rain Gauge
- Drop Point
- Helispot
- ) Division
- WX Mobile Weather

- Incident Command Post
- R Repeater
- ▲ Aerial Hazard
- Private Structures
- ▲ NPS Property

- H Helibase
- I Bridge Locations
- I-75
- Improved Road
- Primary Buggy Trail

- Contingency Lines**
- Primary
  - Alternate
  - Contingency
  - Emergency

NAD 83 UTM 11;  
0 0.5 1 2 3 Miles



### Medical Incident Report- "9 Line"

**FOR ALL MEDICAL EMERGENCIES: IDENTIFY ON SCENE INCIDENT COMMANDER BY NAME AND POSITION AND ANNOUNCE "MEDICAL EMERGENCY" TO INITIATE RESPONSE FROM IMT COMMUNICATIONS/DISPATCH.**

Use items one through nine to communicate situation to communications/dispatch.

**1. CONTACT COMMUNICATIONS-**

*Ex: "Cowbell Communications, Div. Alpha. Stand-by for Priority Medical Incident Report." (If life threatening request designated frequency be cleared for emergency traffic.)*

**2. INCIDENT STATUS: Provide incident summary and command structure.**

Nature of Injury/Illness		Describe the injury <i>(Ex: Broken leg with bleeding)</i>
Incident Name		Geographic Name + "Medical" <i>(Ex: Trout Meadow Medical)</i>
Incident Commander		Name of IC
Patient Care		Name of Care Provider <i>(Ex: EMT Smith)</i>

**3. INITIAL PATIENT ASSESSMENT: Complete this section for each patient. This is only a brief, initial assessment. Provide additional patient info after completing this 9 Line Report.**

Number of Patients:	Male / Female	Age:	Weight:
Conscious? <input type="checkbox"/> YES <input type="checkbox"/> NO = MEDEVAC!			
Breathing? <input type="checkbox"/> YES <input type="checkbox"/> NO = MEDEVAC!			
Mechanism of Injury: <i>What caused the injury?</i>			
Lat/Long (Datum NAD83)			

**4. SEVERITY OF EMERGENCY, TRANSPORT PRIORITY**

SEVERITY	TRANSPORT PRIORITY
<input type="checkbox"/> <b>URGENT-RED</b> Life threatening injury or illness. <i>Ex: Unconscious, difficulty breathing, bleeding severely, 2° – 3° burns more than 4 palm sizes, heat stroke, disoriented.</i>	Ambulance or MEDEVAC helicopter. Evacuation need is IMMEDIATE.
<input type="checkbox"/> <b>PRIORITY-YELLOW</b> Serious Injury or illness. <i>Ex: Significant trauma, not able to walk, 2° – 3° burns not more than 1-2 palm sizes.</i>	Ambulance or consider air transport if at remote location. Evacuation may be DELAYED.
<input type="checkbox"/> <b>ROUTINE-GREEN</b> Not a life threatening injury or illness. <i>Ex: Sprains, strains, minor heat-related illness.</i>	Non-Emergency. Evacuation considered Routine of Convenience.

**5. TRANSPORT PLAN:**

Air Transport: (Agency Aircraft Preferred)

<input type="checkbox"/> Helispot	<input type="checkbox"/> Short-haul/Hoist	<input type="checkbox"/> Life Flight	<input type="checkbox"/> Other
Ground Transport:			
<input type="checkbox"/> Self-Extract	<input type="checkbox"/> Carry-Out	<input type="checkbox"/> Ambulance	<input type="checkbox"/> Other

**6. ADDITIONAL RESOURCE/EQUIPMENT NEEDS:**

<input type="checkbox"/> Paramedic/EMT(s)	<input type="checkbox"/> Crew(s)	<input type="checkbox"/> SKED/Backboard/C-Collar
<input type="checkbox"/> Burn Sheet(s)	<input type="checkbox"/> Oxygen	<input type="checkbox"/> Trauma Bag
<input type="checkbox"/> Medication(s)	<input type="checkbox"/> IV/Fluid(s)	<input type="checkbox"/> Cardiac Monitor/AED
<input type="checkbox"/> Other (i.e. splints, rope rescue, wheeled litter)		

**7. COMMUNICATIONS:**

Function	Channel Name/Number	Receive (Rx)	Tone/NAC *	Transmit (Tx)	Tone/NAC *
COMMAND	CARNS Rpt Channel 1	172.4250	1035	170.1000	1035
COMMAND	OASIS Rpt Channel 2	172.4250	1035	171.6250	1035
COMMAND	CMD Channel 12	166.6125	No Tone	168.4000	110.9
AIR-TO-GRND	AG/85 Channel 10	168.3250	No Tone	168.3250	No Tone
TACTICAL					

\*(NAC for digital radio system)

**8. EVACUATION LOCATION:**

Lat/Long (Datum NAD83) <i>EX: N 40 42.45' x W 123 03.24'</i>	
Patient's ETA to Evacuation Location:	
Helispot/Extraction Size and Hazards:	

**9. CONTINGENCY:**

<b>Considerations:</b> <i>If primary options fail, what actions can be implemented in conjunction with primary evacuation method? Be thinking ahead...</i>	<b>REMEMBER:</b> <b>Confirm ETA's of resources ordered Act according to your level of training Be Alert. Keep Calm. Think Clearly. Act Decisively.</b>
--	--



