



# Incident Action Plan

Day Operational Period

Sunday

4/23/17

0800-2000

## Cowbell Fire

FL-BCP-017033

PPKX1417 (1502) / FFF2000000KX140

(21,620 acres, 65% contained)

MM 87

FL-FPR-170001

PRKZP317 (1502) / FFF2000000KZP30

(510 acres, 40% contained)

N 30<sup>th</sup> Street Fire

FL-FLS-170087

PNKWQ317 (1502) / FF20000000KWQ30



QR CODE  
INCIDENT MAP

STOP....THINK...TALK... *THEN ACT!*

INCIDENT OBJECTIVES	1. Incident Name <b>Cowbell Fire</b>	2. Date Prepared <b>4/22/217</b>	3. Time Prepared <b>1200</b>
4. Operational Period <b>4/23/17 0800 - 2000</b>			
5. General Control Objectives For The Incident <u>Objectives for the Incident:</u> <ul style="list-style-type: none"> <li>• Protection of human life is top priority through the use of sound risk management decisions that are commensurate with values at risk.</li> <li>• Protect private property and infrastructure, federal facilities, critical transportation corridors, recreational and cultural resource values, T&amp;E species and their habitat (e.g. Florida Panther, Florida bonneted bat, Red-Cockaded Woodpecker), and wilderness values through coordination with READS and following MIST Tactics on initial and extended attack fires.</li> <li>• Provide opportunities to communicate and educate the public on the role of fire in the BCP and FPR ecosystems through social media and other outlets.</li> <li>• Provide training opportunities for Preserve, State, and local federal fire agency personnel to actively enhance successional planning of future firefighting personnel.</li> <li>• Sustain and enhance relationships with the people we serve.</li> </ul>			
<u>Control Objectives:</u> <ul style="list-style-type: none"> <li>• Utilize confine, contain, and point source protection strategies and tactics that commit responders only to operations where and when they can be successful.</li> <li>• In order to minimize impacts to high values including Seminole and Miccosukee tribal lands, Sanctuary community, and private land within and near to the boundaries of the Big Cypress National Preserve and Florida Panther Wildlife Refuge, keep Cowbell fire: <ul style="list-style-type: none"> <li>○ West of Add 14 and Add 17</li> <li>○ South of the Preserve boundary</li> <li>○ North of Interstate 75</li> <li>○ East of State Highway 29</li> </ul> </li> <li>• In order to minimize impacts to infrastructure and private land within and adjacent to the Florida Panther Wildlife Refuge, keep the MM87 fire: <ul style="list-style-type: none"> <li>○ West of Fakahatchee Strand.</li> <li>○ North of I-75.</li> <li>○ South and east of the refuge boundary.</li> </ul> </li> <li>• Provide initial attack for Big Cypress National Preserve and Florida Panther Refuge in coordination with local resources.</li> <li>• Minimize smoke impacts on I-75, State Road 29 and US Highway 41 in order to avoid safety threats to the public.</li> </ul>			
6. Weather forecast for Period See attached weather forecast.			
7. General Safety Message Look up, look down, look all around for hazards, recognize them and mitigate them.			
8. ATTACHMENTS (X IF ATTACHED) <input checked="" type="checkbox"/> Organization List - ICS 203 <input checked="" type="checkbox"/> Medical Plan - ICS 206 <input checked="" type="checkbox"/> <u>Base Camp Map</u> <input checked="" type="checkbox"/> Division Assignment Lists - ICS 204 <input checked="" type="checkbox"/> Air Ops – ICS 220 <input checked="" type="checkbox"/> <u>Vicinity Map</u> <input checked="" type="checkbox"/> Communications Plan - ICS 205 <input checked="" type="checkbox"/> Incident Map <input checked="" type="checkbox"/> <u>Phone List</u>			
9. Prepared By (Planning Section Chief) <b>Terry Pierce/Dave Dobbs</b>		10. Approved By (Incident Commander) <b>Michael L Wilkins</b>	

## ORGANIZATION ASSIGNMENT LIST (ICS 203)

<b>1. Incident Name:</b>		<b>2. Operational Period:</b> DAY	
COWBELL		Date/Time From: 04/23/2017 0800      SUN	Date/Time To: 04/23/2017 2000      SUN
<b>3. Incident Commander(s) and Command Staff:</b>		CHIEF TERRY HOLSCLOW (T)	
IC/UC	MICHAEL WILKINS / ANDY BAKER(T)	SUPPLY UNIT	BILL KITCHINGS / SANDY RHODES(T)
DEPUTY	MARK MORALES	FACILITIES UNIT	STEVE FRICK / JAMIE JONES(T)
LIAISON OFFICER	ANDY GASTON JEFF OWENBY (T)	GROUND SUPPORT UNIT	JOE EMBERSON / RANDY CHAPIN
SAFETY OFFICER	BRIAN BEISEL / IVAN CUPP	COMMUNICATIONS UNIT	MARK SPANN
INFORMATION OFFICER	TERRY KRASKO / MICHAEL R WILLIAMS(T)	MEDICAL UNIT	SHANNA F ELLIS / MATT MORAN(T)
<b>4. Agency/Organization Representative(s):</b>		SECURITY UNIT	DAVID CLARK
		ORDERING MANAGER	NATALIE BROCE / TAMMIE PERNAS(T)
<b>Agency/Organization</b>	<b>Name</b>	RECEIVING AND DISTRIBUTION MANAGER	PRAWIT HESS
BIG CYPRESS NATIONAL PRESERVE	TAMMY WHITTINGTON / J.D. LEE	<b>7. Operations Section:</b>	
BICY CHIEF OF FIRE AND AVIATION	JORDON MCKNIGHT	OPS SECTION CHIEF	PAUL REYNOLDS
BICY /PANTHER AFMO	BYRON HART	DEPUTY OPS SECTION CHIEF	DWIGHT SNOW; JAY COLLETT(T)
PANTHER ZONE FMO	CASS PALMER	PLANNING OPS	M. HEARD / P. VARNEDO(T)
COLLIER COUNTY SHERIFF	LT. JAKE WALKER		
SEMINOLE TRIBE OF FLORIDA	MATT FLYING/GRANT STEELMAN	DIVISION/GROUP	A/D      KERRY CLARK
FLORIDA HIGHWAY PATROL	LT. JOSEPH BOWERS	DIVISION/GROUP	G      VICTOR DOIG
GREATER NAPLES FIRE RESCUE	J. NOLAN SAPP	DIVISION/GROUP	K      TIM NUTLEY
FFS COLLIER CO. FOREST AREA SUP	TONY CURELLA	DIVISION/GROUP	Z      M. JOHNSON / C. RICHARDS
FFS HENDRY CO. FOREST AREA SUP	JOE LECEA	DIVISION/GROUP	STRUCTURE PROTECTION      JAY WALTER JT SOHR (T)
<b>5. Planning Section:</b>		DIVISION/GROUP	INITIAL ATTACK      KRIS WILSON / A EDWARDS (T)
		DIVISION/GROUP	MM 87 FIRE      SHAWN NAGLE
CHIEF	TERRY PIERCE / DAVE DOBBS MICHAEL R WILLIAMS (T)	DIVISION/GROUP	PARLIAMENT AND MISC FIRES      UNSTAFFED
RESOURCES UNIT	SUE WILDER / STEVE WELLS	<b>7b. Air Operations Branch:</b>	
SITUATION UNIT	SCOTT HAMLET	AIR OPS BRANCH DIRECTOR	JOHN BRAGG / MIKE MOWERY(T)
DOCUMENTATION UNIT	BOB SOBCZAK	AIR SUPPORT GROUP SUPERVISOR	MATT CLINTON
DEMOBILIZATION UNIT	HENRY HICKERSON	AIR TACTICAL GROUP SUPERVISOR	STEVE LITTLE
FIRE BEHAVIOR ANALYST	GLEN FORTENBERRY	OASIS HELIBASE MANAGER	MARK OETZMANN
TRAINING SPECIALIST	TONY WHITE / MARY LEATHERS(T)	<b>8. Finance/Administration Section:</b>	
GIS SPECIALIST	ALLEN SMITH / KATY MCCURDY	CHIEF	RANDEE OLSON / MIKE MORRIS(A)
TECHNOLOGY SUPPORT SPECIALIST	DAN LEDUC / SCOTT GREEST SCOTT BISHAW (T)	TIME UNIT	S FIX, K DONALDSON(T), P SETLICH(T)
INCIDENT METEOROLOGIST	STEVEN IPPOLITI	PROCUREMENT UNIT	LESLIE SOLBERG
STATUS CHECKIN	T. MOSS / A. COCHRAN(T)	COMPENSATION UNIT	DONNA ROGERS
AIR RESOURCE SPECIALIST	TRENT WICKMAN	COST UNIT	SUSAN DEIMEL / JULIE CHISHOLM(T)
<b>6. Logistics Section:</b>		PERSONNEL TIME RECORDER	PEDRA SETLICH KELLY DONALDSON
		CHIEF	C SCHIFFER / B LISOWSKY
<b>9. Prepared By:</b>	<b>Name:</b> TERRY PIERCE/DAVE DOBBS	<b>Position/Title:</b> PLANNING SECTION CHIEF	<b>Signature:</b>
ICS 203	IAP Page	<b>Date/Time:</b> 04/22/2017 0427	



# Fire Weather Forecast

FORECAST NO: 21                                      NAME OF FIRE: Cowbell Fire  
 PREDICTION FOR: Sunday Day Shift                      UNIT: Big Cypress National Preserve  
 SHIFT DATE: April 23, 2017                      Incident Meteorologist: *Steven Ippoliti*  
 FORECAST ISSUED: 1800 April 22, 2017                      954-826-9405

---

**DISCUSSION:** A weak low pressure system will move across the area today, bringing a chance of showers and thunderstorms. The low will move out overnight, ahead of a cold front that will bring continued chances of showers and storms on Monday.

**TODAY (SUNDAY DAY SHIFT):**

**WEATHER:** Mostly cloudy. Showers and thunderstorms possible.  
**WIND (20 FT):** Light & variable becoming southeast at around 10mph in the late morning. Wind may become variable in the afternoon at 5 to 10 mph. Wind may become erratic due to outflow from thunderstorms.  
**MAX TEMPERATURES:** 84 to 86.  
**MIN RH:** 57%.  
 Chance of measurable rain: 50%                      LAL: 3  
**DISPERSION:** 30 MAX    **MIXING HEIGHT:** 4500    **TRANSPORT WIND:** Easterly 10 mph.

---

**TONIGHT (SUNDAY NIGHT):**

**WEATHER:** Cloudy. Showers and thunderstorms possible, mainly in the evening hours. A slight chance of fog.  
**WIND (20 FT):** Calm to light and variable.  
**MIN TEMPERATURES:** 63 to 66F.  
**MAX RH:** 98 to 100%.    LVORI 10 (max).    LAL: 2    Dispersion: 2    Chance measurable rain: 30%.

---

**MONDAY:**

**WEATHER:** Mostly cloudy to overcast most of the day. Showers and thunderstorms possible.  
**WIND (20 FT):** West around 10 mph, increasing to 15 mph and gusty behind the front, due to pass in the late afternoon.  
**MAX TEMPERATURES:** 84 to 87F.  
**MIN RH:** 60%.  
 Chance of measurable rain 40%.                      LAL: 3  
**DISPERSION:** 80 MAX    **MIXING HEIGHT:** 5000    **TRANSPORT WIND:** West 25 mph.

---

**GENERAL OUTLOOK TUESDAY THROUGH THURSDAY:** A return to quiet weather with high pressure building across the region.

**WIND:** Tuesday: West 8 to 12 mph    Wednesday: Southwest 5 to 10 mph    Thursday: South 5 to 10 mph  
**WEATHER/TEMPERATURE:** Partly cloudy. Highs in the mid 80's. Lows around 60.  
**MIN RH:** Tuesday: 47%    Wednesday: 42%    Thursday: 40%  
**NIGHT TIME RECOVERY:** 95% to 100% each night.



Current Incident  
area RAWS

Sunrise Sunday: 6:55 am  
 Sunset Sunday: 7:54 pm  
  
*Source: US Naval Observatory*



Weather Matrix

## FIRE BEHAVIOR FORECAST

**FORECAST NUMBER: #20**

**TYPE OF FIRE: Wildland**

**FIRE NAME: Cowbell**

**OPERATIONAL PERIOD: 04/23/2017**

**DATE ISSUED: 04/22/2017**

**TIME ISSUED: 1800**

**UNIT: Big Cypress Preserve**

**SIGNED: *Glen Fortenberry***

### FUEL ASSUMPTIONS:

Primary fuels consist of grass, shrub, pine overstory with shrub palmetto understory and timber litter. Current fuel conditions are favorable for very active fire behavior within the grass and shrub fuels. Fire activity will greatly diminish in the wide cypress strands. The current drought conditions have led to both live and dead fuel moistures reaching levels of concern. Expect all fuels to burn readily, including those that appear green.

### The fuel moisture for today is:

Calculated 1 hr fuel 12%, 10 hr fuel 9%, 100 hr fuel 11%, 1000 hr fuel 16%

**Critical fire behavior thresholds:** 1 HR Fuel Moisture <6%, RHs below 40% and a Dispersion Index greater than 60.

**WEATHER:** Mostly cloudy, Showers and thunderstorms possible.

**WIND (20 FT):** Light & variable becoming SE around 10 mph in the late morning. Wind may become variable in the afternoon at 5-10 mph. Wind may become erratic due to outflow from thunderstorms.

**MAX TEMPERATURES:** 84-86.

**MIN RH:** 57%.

**LAL:** 3

**DISPERSION:** 30 **MAX MIXING HEIGHT:** 4500 **TRANSPORT WINDS:** Easterly 10 mph.

### General Fire Behavior Forecast:

Fuels are drought stricken and support active fire behavior with near 1/4 + mile rate of spread and 0.2 mile spotting in the pine/ palmetto areas. Grass fuels can spread just over 1/4 mph.

### Specific:

**Cowbell:** Available fuels continue to be consumed with backing, flanking, creeping and smoldering fire. The possibility of reburn in needle cast is increasing but with the high RH level, spread would be minimal. Fire from a needle cast burn could still creep across a control line.

**MM 87:** Watch closely for spots from the initial attack and the burn out that occurred yesterday. Pay close attention for burning snags that could fall across the burn line.

**Initial Attack:** Even with higher RH levels, resistance to suppression efforts can be expected in all fuel types. Expect moderate rates of spread, with high intensities in pine/palmetto fuel type and anticipate spotting to challenge your control efforts.

### PREDICTIONS FOR MOST ACTIVE TIME OF PEAK BURNING PERIOD USING WEATHER FROM INCIDENT IMET

Fuel Model	Fire Behavior
Grass	ROS 15-25 ch/hr, FL 3-4 ft.
Shrub	ROS 8-15 ch/hr, FL 6-8 ft
Timber Litter (Cypress)	ROS 2-3ch/hr, FL 2-3 ft
Maximum Spotting	0.2mile
	25% in all models

**AIR OPERATIONS:** Thunderstorms are possible. Any development could impact air operations.

**FIRE BEHAVIOR SAFETY:** Isolated snags exist across all fires. Outflow winds from thunderstorms can bring these snags down. Watch where you park your vehicles and take breaks.

# HEALTH AND SAFETY MESSAGE

*If you SEE something...SAY something*

**INCIDENT:** Cowbell & MM 87 Fire

**DATE:** 04/23/2017 **TIME:** Day Shift

## Major Hazards and Risks:

- THUNDERSTORM SAFETY
- PERSONAL HYGIENE
- COMMUNICATIONS

Approaching thunderstorms may be noted by a sudden reverse in wind direction, a noticeable rise in wind speed, and a sharp drop in temperature. Rain, hail, and lightning occur only in the mature stage of a thunderstorm.

Observe the 30/30 rule: If you see lightning and hear the thunderclaps follow in less than 30 seconds, take the storm precautions identified in your IRPG on page 21. Know how to respond when thunderstorms occur.

Wash your hands with soapy water or hand sanitizer before each meal or snack and after each trip to the restroom. Cover your mouth when you cough or sneeze. Avoid hand shaking, use fist or elbow bumps.



6. INSTRUCTIONS AND ASSIGNMENTS NOT CLEAR

## **Communication Responsibilities**

All firefighters have five communication responsibilities:

- Brief other as needed
- Debrief your actions
- Communicate hazards to others
- Acknowledge messages
- Ask if you don't know

## Division/Group Assignment List (ICS 204 WF)

<b>1. Incident Name:</b>			<b>3.</b>			
COWBELL			<b>Branch:</b>		<b>Division/Group:</b>  <b>A / D</b>	
<b>2. Operational Period: DAY</b>						
Date/Time From: 04/23/2017 0800      SUN		Date/Time To: 04/23/2017 2000      SUN				
<b>4. Operations Personnel</b>						
<b>OPERATIONS CHIEF</b>		PAUL REYNOLDS		<b>DEPUTY OPERATIONS CHIEF</b>		DWIGHT SNOW JAY COLLETT (T)
<b>PLANNING OPERATIONS</b>		MICHAEL HEARD PAUL VARNEDOE (T)		<b>AIR OPERATIONS BRANCH DIRECTOR</b>		JOHN BRAGG MIKE MOWERY (T)
<b>DIVISION / GROUP SUPERVISOR</b>		KERRY CLARK				
<b>5. Resources Assigned this Period</b>						
Strike Team / Task Force / Resource Designator		LWD	Leader	Number Persons	Drop Off PT./Time	Pick Up PT./Time
HCM MODULE - SUPPRESSION - BIFZ #2 O-106		05/01	SAM DE LONG	8	ICP/0800	ICP/2000
EMPF O-36		04/25	FRANK ABEL	1	ICP/0800	ICP/2000
EMPF O-198		05/01	ADAM WHITE	1	ICP/0800	ICP/2000
<b>6. Control Operations/Work Assignments:</b>						
<p>Task:</p> <ul style="list-style-type: none"> <li>• Patrol and mop up 25 ft. from control line</li> <li>• Monitor and patrol by air</li> </ul> <p>Purpose:</p> <ul style="list-style-type: none"> <li>• To keep fire confined and contained west of ADD 17/ADD 14 on east flank of fire</li> <li>• To protect structures</li> <li>• To alert FHP of potential impact to I-75</li> <li>• Keep fire contained north of I-75</li> </ul> <p>End State:</p> <ul style="list-style-type: none"> <li>• Control fire perimeter west of ADD 17/ADD 14 to eliminate threat to Sanctuary area structures</li> <li>• Minimize risk to public traveling on I-75</li> <li>• Confine fire perimeter to reduce threats to resource values at risk</li> </ul>						
<b>7. Special Instructions:</b>						
Establish and maintain LCES during operational period. Do not engage in fire suppression activities along I-75 shoulders unless traffic hazards have been mitigated						
<b>8. Division/Group Communication Summary</b>						
Function	Channel	RX Frequency N/W	RX Tone/NAC	TX Frequency N/W	TX Tone/NAC	Mode
COMMAND	12	166.6125		168.4000	110.9	A
COMMAND	13	168.7000		170.9750	110.9	A
TACTICAL	4	168.6000		168.6000		A
AIR TO GROUND	10	168.3250		168.3250		A
<b>9. Prepared By (Resource Unit Leader)</b>			<b>Approved By (Planning Section Chief)</b>		<b>Date</b>	<b>Time</b>
SUE WILDER, / STEVE WELLS, RESL			TERRY PIERCE / DAVE DOBBS		04/22/2017	0427

## Division/Group Assignment List (ICS 204 WF)

<b>1. Incident Name:</b>			<b>3.</b>			
COWBELL			<b>Branch:</b>		<b>Division/Group:</b>	
<b>2. Operational Period: DAY</b>					<b>G</b>	
Date/Time From: 04/23/2017 0800      SUN		Date/Time To: 04/23/2017 2000      SUN				
<b>4. Operations Personnel</b>						
<b>OPERATIONS CHIEF</b>		PAUL REYNOLDS		<b>DEPUTY OPERATIONS CHIEF</b>		DWIGHT SNOW JAY COLLETT (T)
<b>PLANNING OPERATIONS</b>		MICHAEL HEARD PAUL VARNEDOE (T)		<b>AIR OPERATIONS BRANCH DIRECTOR</b>		JOHN BRAGG MIKE MOWERY (T)
<b>DIVISION/GROUP SUPERVISOR</b>		VICTOR DOIG				
<b>5. Resources Assigned this Period</b>						
Strike Team / Task Force / Resource Designator		LWD	Leader	Number Persons	Drop Off PT./Time	Pick Up PT./Time
TFLD O-178		04/29	GEORGE ALLALUNIS	1	ICP/0800	ICP/2000
TFLD O-223		04/29	NOAH DANIELS	1	ICP/0800	ICP/2000
TFLD O-106.4		05/02	DEVIN JOHNSON (T)	1	ICP/0800	ICP/2000
TFLD O-106.8		05/02	DOUGLAS CATES (T)	1	ICP/0800	ICP/2000
HC1 CREW - T1 - FLAGSTAFF IHC C-9		05/03	ANDREW M PATTERSON	20	ICP/0800	ICP/2000
HC2 MODULE - SUPPRESSION - SA - MODULE SMKJ#1 O-254		05/06	DANIEL COTTRELL	8	ICP/0800	ICP/2000
HEQB O-201		05/02	DAVID POOLE	1	ICP/0800	ICP/2000
HEQB O-224		05/04	JASON DEASY	1	ICP/0800	ICP/2000
HEQB O-225		05/04	GARY ROSE	1	ICP/0800	ICP/2000
HEQB O-226		05/04	TOM STEVENS (T)	1	ICP/0800	ICP/2000
FLORIDA PANTHER FIRE BUGGY #2 E-66		05/27	MATT MATEO	1	ICP/0800	ICP/2000
ENG6 ENGINE - T6 - WILDLANDS FIRE SERVICE INC - 339712 - 9 E-121		04/25	DAVID HOGREFE	3	ICP/0800	ICP/2000
MAST MASTICATOR - BOOM MOUNTED, TYPE 3 - T 1736 JOHN DEERE E-6		05/12	CARLOS DE LA CRUZ	1	ICP/0800	ICP/2000
MAST DAVE'S EXCAVATING E-1051		05/02	RICK DUKES	1	ICP/0800	ICP/2000
MAST MASTICATOR - HENDRY GRINDING E-159		05/04	CHAD MUDGE	1	ICP/0800	ICP/2000
MAST MASTICATOR -		05/04	WES O'CONNER	1	ICP/0800	ICP/2000
SWEEPER			DAVID LUCAS	1	ICP/0800	ICP/2000
SOFR O-193		05/02	ROBERT BERTOLINA	1	ICP/0800	ICP/2000
<b>8. Division/Group Communication Summary</b>						
Function	Channel	RX Frequency N/W	RX Tone/NAC	TX Frequency N/W	TX Tone/NAC	Mode
COMMAND	13	168.7000		170.9750	110.9	A
COMMAND	15	173.0375		167.3250	110.9	A
TACTICAL	5	168.2500		168.2500		A
AIR TO GROUND	10	168.3250		168.3250		A
<b>9. Prepared By (Resource Unit Leader)</b>			<b>Approved By (Planning Section Chief)</b>		<b>Date</b>	<b>Time</b>
SUE WILDER/STEVE WELLS			TERRY PIERCE/DAVE DOBBS		04/22/2017	0427



## Division/Group Assignment List (ICS 204 WF)

<b>1. Incident Name:</b>			<b>3.</b>			
COWBELL			<b>Branch:</b>		<b>Division/Group:</b>  <b>G</b>	
<b>2. Operational Period: DAY</b>						
Date/Time From: 04/23/2017 0800      SUN		Date/Time To: 04/23/2017 2000      SUN				
<b>4. Operations Personnel</b>						
<b>OPERATIONS CHIEF</b>		PAUL REYNOLDS		<b>DEPUTY OPERATIONS CHIEF</b>		DWIGHT SNOW JAY COLLETT (T)
<b>PLANNING OPERATIONS</b>		MICHAEL HEARD PAUL VARNEDOE (T)		<b>AIR OPERATIONS BRANCH DIRECTOR</b>		JOHN BRAGG MIKE MOWERY (T)
<b>DIVISION/GROUP SUPERVISOR</b>		VICTOR DOIG				
<b>5. Resources Assigned this Period</b>						
Strike Team / Task Force / Resource Designator		LWD	Leader	Number Persons	Drop Off PT./Time	Pick Up PT./Time
READ O-154		04/25	JOANNE YOUNG	1	ICP/0800	ICP/2000
EMPF O-220		05/01	CLARK WADE	1	ICP/0800	ICP/2000
EMPF O-251			LIONEL VAN GURP	1	ICP/0800	ICP/2000
<b>6. Control Operations/Work Assignments:</b>						
<p>Task:</p> <ul style="list-style-type: none"> <li>• Patrol and mop up 25 ft. from control line.</li> <li>• Masticate Perocchi Grade to create alternate line.</li> <li>• Continue monitoring and using aerial support to contain slop overs on Nobles Grades.</li> <li>• Monitor Kissimmee Billy Strand using aerial support.</li> <li>• Continue to cold trail and extinguish hot spots on Kissimmee Billy Strand.</li> </ul> <p>Purpose:</p> <ul style="list-style-type: none"> <li>• To keep fire contained east of Kissimmee Billy Strand while minimizing fire fighter exposure.</li> <li>• To establish a contingency line and alternate line.</li> </ul> <p>End State:</p> <ul style="list-style-type: none"> <li>• Confine fire perimeter to reduce threats to resource values at risk.</li> </ul>						
<b>7. Special Instructions:</b>						
Coordinate with Field OPS in the event swing shift resources are required. Utilize MIST tactics as outlined in Fire Operations Guide for BICY. Follow tracked vehicle requirement restrictions.						
<b>8. Division/Group Communication Summary</b>						
Function	Channel	RX Frequency N/W	RX Tone/NAC	TX Frequency N/W	TX Tone/NAC	Mode
COMMAND	13	168.7000		170.9750	110.9	A
COMMAND	15	173.0375		167.3250	110.9	A
TACTICAL	5	168.2500		168.2500		A
AIR TO GROUND	10	168.3250		168.3250		A
<b>9. Prepared By (Resource Unit Leader)</b>			<b>Approved By (Planning Section Chief)</b>		<b>Date</b>	<b>Time</b>
SUE WILDER/STEVE WELLS			TERRY PIERCE/DAVE DOBBS		04/22/2017	0427

## Division/Group Assignment List (ICS 204 WF)

<b>1. Incident Name:</b>			<b>3.</b>			
COWBELL			<b>Branch:</b>		<b>Division/Group:</b>  <b>K</b>	
<b>2. Operational Period: DAY</b>						
Date/Time From: 04/23/2017 0800      SUN		Date/Time To: 04/23/2017 2000      SUN				
<b>4. Operations Personnel</b>						
<b>OPERATIONS CHIEF</b>		PAUL REYNOLDS		<b>DEPUTY OPERATIONS CHIEF</b>		DWIGHT SNOW JAY COLLETT (T)
<b>PLANNING OPERATIONS CHIEF</b>		MICHAEL HEARD PAUL VARNEDOE (T)		<b>DIVISION/GROUP SUPERVISOR</b>		TIM NUTLEY
<b>AIR OPERATIONS BRANCH DIRECTOR</b>		JOHN BRAGG MIKE MOWERY (T)				
<b>5. Resources Assigned this Period</b>						
Strike Team / Task Force / Resource Designator		LWD	Leader	Number Persons	Drop Off PT./Time	Pick Up PT./Time
UNSTAFFED						
<b>6. Control Operations/Work Assignments:</b>						
<p>Task:</p> <ul style="list-style-type: none"> <li>• Coordinate with Florida Forestry Service representative for proposed line construction on private land.</li> <li>• Keep fire contained south of BICY boundary and private lands to minimize impacts.</li> </ul> <p>Purpose:</p> <ul style="list-style-type: none"> <li>• To protect structures on private lands.</li> </ul> <p>End State:</p> <ul style="list-style-type: none"> <li>• Confine fire perimeter to reduce impacts to private land ownership.</li> </ul>						
<b>7. Special Instructions:</b>						
<p>Establish and maintain LCES during operational period. Coordinate with Field OPS in the event swing shift resources are required. Follow tracked vehicle requirements restriction. Utilize MIST tactics as outlined in Fire Operations Guide for BICY.</p>						
<b>8. Division/Group Communication Summary</b>						
Function	Channel	RX Frequency N/W	RX Tone/NAC	TX Frequency N/W	TX Tone/NAC	Mode
COMMAND	12	166.6125		168.4000	110.9	A
COMMAND	13	168.7000		170.9750	110.9	A
TACTICAL	8	166.7500		166.7500		A
AIR TO GROUND	10	168.3250		168.3250		A
<b>9. Prepared By (Resource Unit Leader)</b>			<b>Approved By (Planning Section Chief)</b>		<b>Date</b>	<b>Time</b>
SUE WILDER/STEVE WELLS			TERRY PIERCE/DAVE DOBBS		04/22/2017	0427

## Division/Group Assignment List (ICS 204 WF)

<b>1. Incident Name:</b>			<b>3.</b>			
COWBELL			<b>Branch:</b>		<b>Division/Group:</b>	
<b>2. Operational Period: DAY</b>					<b>Z</b>	
Date/Time From: 04/23/2017 0800      SUN	Date/Time To: 04/23/2017 2000      SUN					
<b>4. Operations Personnel</b>						
<b>OPERATIONS CHIEF</b>		PAUL REYNOLDS		<b>DEPUTY OPERATIONS CHIEF</b>		DWIGHT SNOW; JAY COLLETT (T)
<b>PLANNING OPERATIONS</b>		MICHAEL HEARD PAUL VARNEDOE (T)		<b>AIR OPERATIONS BRANCH DIRECTOR</b>		JOHN BRAGG MIKE MOWERY (T)
<b>DIVISION / GROUP SUPERVISOR</b>		MICAH JOHNSON CHRIS RICHARDS (T)				
<b>5. Resources Assigned this Period</b>						
Strike Team / Task Force / Resource Designator		LWD	Leader	Number Persons	Drop Off PT./Time	Pick Up PT./Time
TFLD JAMES R WETTSTAED O-221		05/04	JAMES WETTSTAED	1	ICP/0800	ICP/2000
HCM MODULE - SUPPRESSION - NPS #1 O-21		04/23	JOSH HAMPTON	6	ICP/0800	ICP/2000
ENG6 ENGINE - T6 - WILDLANDS FIRE SERVICE INC - C52720 - 3 E-158		05/04	SAUL IRVIN	2	ICP/0800	ICP/2000
SEMINOLE SUPPRESSION BUGGY E-60		04/30	MIKE LIGHTSEY	2	ICP/0800	ICP/2000
SEMINOLE SUPPRESSION BUGGY E-139		04/26	JUSTSIN WEDO	1	ICP/0800	ICP/2000
TRANSPORT BUGGY E-38		04/25	CLINT WEEKS	1	ICP/0800	ICP/2000
TRANSPORT BUGGY E-39		04/25	CAPTAIN STEVE-CLINTON WEAKS	1	ICP/0800	ICP/2000
TRANSPORT BUGGY E-40		04/25	BOBBY WEEKS	1	ICP/0800	ICP/2000
TRANSPORT BUGGY E-41		04/25	VICTOR ROBINSON	1	ICP/0800	ICP/2000
READ O-154		04/25	JOANNE YOUNG	1	ICP/0800	ICP/2000
SOFR O-194		05/02	MARK HELM	1	ICP/0800	ICP/2000
SOFR (T) O-76		04/28	JUSTIN PHIPPEN	1	ICP/0800	ICP/2000
EMPF O-199		05/01	TOM CHRISTIAN	1	ICP/0800	ICP/2000
EMTF LITTLE O-196		05/01	BRANDON MITCHELL	1		
<b>8. Division/Group Communication Summary</b>						
Function	Channel	RX Frequency N/W	RX Tone/NAC	TX Frequency N/W	TX Tone/NAC	Mode
COMMAND	12	166.6125		168.4000	110.9	A
COMMAND	13	168.7000		170.9750	110.9	A
TACTICAL	8	166.7500		166.7500		A
AIR TO GROUND	10	168.3250		168.3250		A
<b>9. Prepared By (Resource Unit Leader)</b>			<b>Approved By (Planning Section Chief)</b>		<b>Date</b>	<b>Time</b>
SUE WILDER/STEVE WELLS			TERRY PIERCE/DAVE DOBBS		04/22/2017	0427

## Division/Group Assignment List (ICS 204 WF)

<b>1. Incident Name:</b>			<b>3.</b>			
COWBELL			<b>Branch:</b>		<b>Division/Group:</b>  <b>Z</b>	
<b>2. Operational Period: DAY</b>						
Date/Time From: 04/23/2017 0800      SUN		Date/Time To: 04/23/2017 2000      SUN				
<b>4. Operations Personnel</b>						
<b>OPERATIONS CHIEF</b>		PAUL REYNOLDS		<b>DEPUTY OPERATIONS CHIEF</b>		DWIGHT SNOW; JAY COLLETT (T)
<b>PLANNING OPERATIONS</b>		MICHAEL HEARD PAUL VARNEDOE (T)		<b>AIR OPERATIONS BRANCH DIRECTOR</b>		JOHN BRAGG MIKE MOWERY (T)
<b>DIVISION / GROUP SUPERVISOR</b>		MICAH JOHNSON CHRIS RICHARDS (T)				
<b>5. Resources Assigned this Period</b>						
Strike Team / Task Force / Resource Designator		LWD	Leader	Number Persons	Drop Off PT./Time	Pick Up PT./Time
<b>6. Control Operations/Work Assignments:</b>						
Task:						
• Patrol and conduct mop up 25 ft. from control line						
Purpose:						
• To keep fire south of Preserve Boundary and west of ADD 17 to protect private land with structures						
End State:						
• Control fire to eliminate threats to Seminole Tribe of Florida and private property						
<b>7. Special Instructions:</b>						
Establish and maintain LCES during operational period. Coordinate with Field OPS in the event swing shift resources are required. Follow tracked vehicle requirements restriction. Utilize MIST tactics as outlined in Fire Operations Guide for BICY.						
<b>8. Division/Group Communication Summary</b>						
Function	Channel	RX Frequency N/W	RX Tone/NAC	TX Frequency N/W	TX Tone/NAC	Mode
COMMAND	12	166.6125		168.4000	110.9	A
COMMAND	13	168.7000		170.9750	110.9	A
TACTICAL	8	166.7500		166.7500		A
AIR TO GROUND	10	168.3250		168.3250		A
<b>9. Prepared By (Resource Unit Leader)</b>			<b>Approved By (Planning Section Chief)</b>		<b>Date</b>	<b>Time</b>
SUE WILDER/STEVE WELLS			TERRY PIERCE/DAVE DOBBS		04/22/2017	0427

## Division/Group Assignment List (ICS 204 WF)

<b>1. Incident Name:</b>			<b>3.</b>			
COWBELL			<b>Branch:</b>		<b>Division/Group:</b>  <b>STRUCTURE PROTECTION</b>	
<b>2. Operational Period: DAY</b>						
Date/Time From: 04/23/2017 0800      SUN		Date/Time To: 04/23/2017 2000      SUN				
<b>4. Operations Personnel</b>						
<b>OPERATIONS CHIEF</b>		PAUL REYNOLDS		<b>DEPUTY OPERATIONS CHIEF</b>		DWIGHT SNOW JAY COLLETT (T)
<b>PLANNING OPERATIONS</b>		MICHAEL HEARD PAUL VARNEDOE (T)		<b>AIR OPERATIONS BRANCH DIRECTOR</b>		JOHN BRAGG MIKE MOWERY (T)
<b>DIVISION/GROUP SUPERVISOR</b>		JAY WALTER JT SOHR (T)				
<b>5. Resources Assigned this Period</b>						
Strike Team / Task Force / Resource Designator		LWD	Leader	Number Persons	Drop Off PT./Time	Pick Up PT./Time
<b>6. Control Operations/Work Assignments:</b>						
<p>Task:</p> <ul style="list-style-type: none"> <li>Review structure protection plan.</li> <li>Assess structure protection needs west of the Plains Trail (alternate line) and west of the Perocchi-Bear Island Grade (Contingency line).</li> </ul> <p>Purpose:</p> <ul style="list-style-type: none"> <li>Structure preparation around Baker Cabin.</li> </ul> <p>End State:</p> <ul style="list-style-type: none"> <li>Protect human life.</li> </ul> <p>Minimize damage to public and private property and infrastructure.</p>						
<b>7. Special Instructions:</b>						
Be prepared for extended staffing if needed. Coordinate with Field OPS to determine need. Follow tracked vehicle requirement restrictions. Establish and maintain LCES during operational period. Utilize MIST tactics as outlined in Fire Operations Guide for BICY.						
<b>8. Division/Group Communication Summary</b>						
Function	Channel	RX Frequency N/W	RX Tone/NAC	TX Frequency N/W	TX Tone/NAC	Mode
BICY RPTR	1	172.4250	1035	170.1000	1035	D
BICY RPTR	2	172.4250	1035	171.6250	1035	D
PANTHER RPTR	7	164.6250	1188	163.1500	1188	D
TACTICAL	9	166.8250		166.8250		A
AIR TO GROUND	6	169.1125		169.1125		A
<b>9. Prepared By (Resource Unit Leader)</b>			<b>Approved By (Planning Section Chief)</b>		<b>Date</b>	<b>Time</b>
SUE WILDER/STEVE WELLS			TERRY PIERCE/DAVE DOBBS		04/22/2017	0427

## Division/Group Assignment List (ICS 204 WF)

<b>1. Incident Name:</b>			<b>3.</b>			
COWBELL			<b>Branch:</b>		<b>Division/Group:</b>	
<b>2. Operational Period: DAY</b>			<b>INITIAL ATTACK</b>			
Date/Time From: 04/23/2017 0800      SUN		Date/Time To: 04/23/2017 2000      SUN				
<b>4. Operations Personnel</b>						
<b>OPERATIONS CHIEF</b>		PAUL REYNOLDS		<b>DEPUTY OPERATIONS CHIEF</b>		DWIGHT SNOW JAY COLLETT (T)
<b>PLANNING OPERATIONS</b>		MICHAEL HEARD PAUL VARNEDOE (T)		<b>AIR OPERATIONS BRANCH DIRECTOR</b>		JOHN BRAGG MIKE MOWERY (T)
<b>DIVISION / GROUP SUPERVISOR</b>		KRIS WILSON AARON EDWARDS JR (T)				
<b>5. Resources Assigned this Period</b>						
Strike Team / Task Force / Resource Designator		LWD	Leader	Number Persons	Drop Off PT./Time	Pick Up PT./Time
TFLD O-60		04/26	HAROLD L KIBBE	1	ICP/0800	ICP/2000
HC2I CREW - T2IA - PR MA #3 C-7 MOD B		04/27	LOUIS SAEZ	10	ICP/0800	ICP/2000
ENG6 ENGINE - T6 - 461- NPS E-57		04/26	GUS SCHAEFER	2	ICP/0800	ICP/2000
ENG6 ENGINE - T6 - CO-PSF - 7-1 E-140		04/27	KYLE A AVESING	3	ICP/0800	ICP/2000
ENG6 ENGINE - T6 - WILDLANDS FIRE SERVICE INC - C93328 - 5 E-122		04/25	CHAD ANDERSON	3	ICP/0800	ICP/2000
BICY SUPPRESSION BUGGY #1 E-129		04/23	JAMES RAY	1	ICP/0800	ICP/2000
SOFR O-54		04/26	KRIS CRODDY	1	ICP/0800	ICP/2000
EMTF O-197		05/01	CHRIS SANTOPIETRO	1	ICP/0800	ICP/2000
EMPF O-249		05/05	SHAWN CLARK	1	ICP/0800	ICP/2000
<b>6. Control Operations/Work Assignments:</b>						
Task:						
<ul style="list-style-type: none"> <li>• Coordinate with BICY duty officer for notification of newly reported ignitions. Coordinate initial attack action with assigned aviation and /or ground assets</li> <li>• Determine IA resource pre-positioning needs across BICY and FPWR</li> </ul>						
Purpose:						
<ul style="list-style-type: none"> <li>• Ensure communications with FL Hwy Patrol regarding smoke on I-75 and Hwy 41. Ensure timely response on any IA within BICY and FPWR</li> </ul>						
End State:						
<ul style="list-style-type: none"> <li>• Protect human life. Minimize environment damage to protect habitat of threatened and endangered species. Minimize damage to public and private property</li> </ul>						
<b>8. Division/Group Communication Summary</b>						
Function	Channel	RX Frequency N/W	RX Tone/NAC	TX Frequency N/W	TX Tone/NAC	Mode
BICY RPTR	1	172.4250	1035	170.1000	1035	D
BICY RPTR	2	172.4250	1035	171.6250	1035	D
PANTHER RPTR	7	164.6250	1188	163.1500	1188	D
TACTICAL	9	166.8250		166.8250		A
AIR TO GROUND	6	169.1125		169.1125		A
<b>9. Prepared By (Resource Unit Leader)</b>			<b>Approved By (Planning Section Chief)</b>		<b>Date</b>	<b>Time</b>
SUE WILDER/STEVE WELLS			TERRY PIERCE/DAVE DOBBS		04/22/2017	0427

## Division/Group Assignment List (ICS 204 WF)

<b>1. Incident Name:</b>			<b>3.</b>			
COWBELL			<b>Branch:</b>		<b>Division/Group:</b>	
<b>2. Operational Period: DAY</b>						
Date/Time From: 04/23/2017 0800      SUN		Date/Time To: 04/23/2017 2000      SUN		<b>INITIAL ATTACK</b>		
<b>4. Operations Personnel</b>						
<b>OPERATIONS CHIEF</b>		PAUL REYNOLDS		<b>DEPUTY OPERATIONS CHIEF</b>		DWIGHT SNOW JAY COLLETT (T)
<b>PLANNING OPERATIONS</b>		MICHAEL HEARD PAUL VARNEDOE (T)		<b>AIR OPERATIONS BRANCH DIRECTOR</b>		JOHN BRAGG MIKE MOWERY (T)
<b>DIVISION / GROUP SUPERVISOR</b>		KRIS WILSON AARON EDWARDS JR (T)				
<b>7. Special Instructions:</b>						
<ul style="list-style-type: none"> <li>• <b>IA will be staged at Deep Lake Staging Area</b></li> </ul> <p>Be prepared for extended staffing as needed. Coordinate with Field OPS to determine need. Follow tracked vehicle requirement restrictions. Establish and maintain LCES during operational period. Utilize MIST tactics as outlined in Fire Operations Guide for BICY. <b>All initial attack will go through BICY Fire Dispatch Center. Incident within an Incident will go through Cowbell communications.</b></p>						
<b>8. Division/Group Communication Summary</b>						
Function	Channel	RX Frequency N/W	RX Tone/NAC	TX Frequency N/W	TX Tone/NAC	Mode
BICY RPTR	1	172.4250	1035	170.1000	1035	D
BICY RPTR	2	172.4250	1035	171.6250	1035	D
PANTHER RPTR	7	164.6250	1188	163.1500	1188	D
TACTICAL	9	166.8250		166.8250		A
AIR TO GROUND	6	169.1125		169.1125		A
<b>9. Prepared By (Resource Unit Leader)</b>			<b>Approved By (Planning Section Chief)</b>		<b>Date</b>	<b>Time</b>
SUE WILDER/STEVE WELLS			TERRY PIERCE/DAVE DOBBS		04/22/2017	0427

## Division/Group Assignment List (ICS 204 WF)

<b>1. Incident Name:</b>				<b>3.</b>			
COWBELL				<b>Branch:</b>		<b>Division/Group:</b>	
<b>2. Operational Period: DAY</b>							
Date/Time From: 04/23/2017 0800      SUN		Date/Time To: 04/23/2017 2000      SUN		<b>MM 87 FIRE</b>			
<b>4. Operations Personnel</b>							
<b>OPERATIONS CHIEF</b>		PAUL REYNOLDS		<b>DEPUTY OPERATIONS CHIEF</b>		DWIGHT SNOW JAY COLLETT (T)	
<b>PLANNING OPERATIONS</b>		MICHAEL HEARD PAUL VARNEDOE (T)		<b>AIR OPERATIONS BRANCH DIRECTOR</b>		JOHN BRAGG MIKE MOWERY (T)	
<b>DIVISION / GROUP SUPERVISOR</b>		SHAWN NAGLE					
<b>5. Resources Assigned this Period</b>							
Strike Team / Task Force / Resource Designator		LWD	Leader		Number Persons	Drop Off PT./Time	Pick Up PT./Time
TFLD O-144		04/24	WILLARD R WORLEY		1	ICP/0800	ICP/2000
TFLD O-177		04/30	DAVID MOORE (T)		1	ICP/0800	ICP/2000
TFLD O-172		04/29	ALAN KIRBY		1	ICP/0800	ICP/2000
TFLD O-173		04/29	JARED NOBLES (T)		1	ICP/0800	ICP/2000
HC2I CREW - T2IA - PR MA #3 C-7 MOD A		04/27	ROBERTO MARTINEZ		10	ICP/0800	ICP/2000
ENG6 ENGINE - T6 - ATTACK-ONE FIRE MANAGEMENT SERVICES INC E-58		04/26	KEVIN CARTER		2	ICP/0800	ICP/2000
ENG6 ENGINE - T6 - CSP 661 E-59		05/04	CHRIS CORRIGAN		2	ICP/0800	ICP/2000
ENG6 ENGINE - T6 - 31 E-7		04/29	JONATHAN O'GORMAN		2	ICP/0800	ICP/2000
ENG6 ENGINE - T6 - 658 E-157		05/04	RUSS MARSHALL		3	ICP/0800	ICP/2000
ENG3 ENGINE - T3 - CA-SHF - 51 E-99		04/23	MIKE ANDERSON		5	ICP/0800	ICP/2000
ENG6 ENGINE - T6 - FIRE TRAX LLC - B65014 - 610 E-86		04/26	CARLOS GUTIERREZ		3	ICP/0800	ICP/2000
ENG6 ENGINE - T6 - WILDLANDS FIRE SERVICE INC - A57267 - 8 E-87		05/03	BRIAN TERRY		3	ICP/0800	ICP/2000
DUECE BUGGY IA - 607 E-89		04/24	CONNER BOWDEN		3	ICP/0800	ICP/2000
BICY SWAMP BUGGY #5 E-64		04/24	MARTY ANGELO		1	ICP/0800	ICP/2000
SLIMER SUPPRESION BUGGY E-80		04/25	JOSH MANLEY / BLAKE SHAW		4	ICP/0800	ICP/2000
<b>8. Division/Group Communication Summary</b>							
Function	Channel	RX Frequency N/W	RX Tone/NAC	TX Frequency N/W	TX Tone/NAC	Mode	
BICY RPTR	1	172.4250	1035	170.1000	1035	D	
BICY RPTR	2	172.4250	1035	171.6250	1035	D	
PANTHER RPTR	7	164.6250	1188	163.1500	1188	D	
TACTICAL	9	166.8250		166.8250		A	
AIR TO GROUND	6	169.1125		169.1125		A	
<b>9. Prepared By (Resource Unit Leader)</b>			<b>Approved By (Planning Section Chief)</b>			<b>Date</b>	<b>Time</b>
SUE WILDER/ STEVE WELLS RESL			TERRY PIERCE/ DAVE DOBBS			04/22/2017	0427



## Division/Group Assignment List (ICS 204 WF)

<b>1. Incident Name:</b>			<b>3.</b>			
COWBELL			<b>Branch:</b>		<b>Division/Group:</b>  <b>MM 87 FIRE</b>	
<b>2. Operational Period: DAY</b>						
Date/Time From: 04/23/2017 0800      SUN		Date/Time To: 04/23/2017 2000      SUN				
<b>4. Operations Personnel</b>						
<b>OPERATIONS CHIEF</b>		PAUL REYNOLDS		<b>DEPUTY OPERATIONS CHIEF</b>		DWIGHT SNOW JAY COLLETT (T)
<b>PLANNING OPERATIONS</b>		MICHAEL HEARD PAUL VARNEDOE (T)		<b>AIR OPERATIONS BRANCH DIRECTOR</b>		JOHN BRAGG MIKE MOWERY (T)
<b>DIVISION / GROUP SUPERVISOR</b>		SHAWN NAGLE				
<b>5. Resources Assigned this Period</b>						
Strike Team / Task Force / Resource Designator		LWD	Leader	Number Persons	Drop Off PT./Time	Pick Up PT./Time
SOFR O-135		04/24	DONALD FOCO	1	ICP/0800	ICP/2000
EMPF O-250		05/05	CODY GILMORE	1		
EMTF O-213		05/02	BRAD BURNS	1	ICP/0800	ICP/2000
<b>6. Control Operations/Work Assignments:</b>						
Task:						
<ul style="list-style-type: none"> <li>• Complete any remaining strategic fire operations.</li> <li>• Patrol and conduct mop up 25 feet from control line.</li> </ul>						
Purpose:						
<ul style="list-style-type: none"> <li>• To keep fire contained within the Panther Refuge boundary.</li> </ul>						
End State:						
<ul style="list-style-type: none"> <li>• Protect human life. Minimize environment damage to protect habitat of threatened and endangered species. Minimize damage to public and private property</li> </ul>						
<b>7. Special Instructions:</b>						
Establish and maintain LCES during operational period. Coordinate with Field OPs in the event swing shift resources are required. Utilize MIST tactics as outlined in Fire Operations Guide for BICY.						
<b>8. Division/Group Communication Summary</b>						
Function	Channel	RX Frequency N/W	RX Tone/NAC	TX Frequency N/W	TX Tone/NAC	Mode
BICY RPTR	1	172.4250	1035	170.1000	1035	D
BICY RPTR	2	172.4250	1035	171.6250	1035	D
PANTHER RPTR	7	164.6250	1188	163.1500	1188	D
TACTICAL	9	166.8250		166.8250		A
AIR TO GROUND	6	169.1125		169.1125		A
<b>9. Prepared By (Resource Unit Leader)</b>			<b>Approved By (Planning Section Chief)</b>		<b>Date</b>	<b>Time</b>
SUE WILDER/ STEVE WELLS RESL			TERRY PIERCE/ DAVE DOBBS		04/22/2017	0427

## Division/Group Assignment List (ICS 204 WF)

<b>1. Incident Name:</b>				<b>3.</b>			
COWBELL				<b>Branch:</b>		<b>Division/Group:</b>  <b>PARLIAMENT / MISC FIRE</b>	
<b>2. Operational Period: DAY</b>							
Date/Time From: 04/23/2017 0800      SUN		Date/Time To: 04/23/2017 2000      SUN					
<b>4. Operations Personnel</b>							
<b>OPERATIONS CHIEF</b>		PAUL REYNOLDS		<b>DEPUTY OPERATIONS CHIEF</b>		DWIGHT SNOW JAY COLLETT (T)	
<b>PLANNING OPERATIONS</b>		MICHAEL HEARD PAUL VARNEDOE (T)		<b>AIR OPERATIONS BRANCH DIRECTOR</b>		JOHN BRAGG MIKE MOWERY (T)	
<b>DIVISION / GROUP SUPERVISOR</b>							
<b>5. Resources Assigned this Period</b>							
Strike Team / Task Force / Resource Designator		LWD	Leader	Number Persons	Drop Off PT./Time	Pick Up PT./Time	
UNSTAFFED							
<b>6. Control Operations/Work Assignments:</b>							
<p>Task:</p> <ul style="list-style-type: none"> <li>• Patrol and monitor fires on BICY and FPWR with aviation and ground assets as directed by lead OSC commensurate with values at risk</li> <li>• Monitor fires for further suppression management action</li> </ul> <p>Purpose:</p> <ul style="list-style-type: none"> <li>• Assure suppression action taken limits environmental impact, consistent with MIST tactics</li> </ul> <p>End State:</p> <ul style="list-style-type: none"> <li>• Protect human life</li> <li>• Minimize damage to public and private property</li> <li>• Minimize environmental damage to protect habitat of threatened and endangered species</li> </ul>							
<b>7. Special Instructions:</b>							
<p>Follow tracked vehicle requirement restrictions. Establish and maintain LCES during operational period. Utilize MIST tactics as outlined in Fire Operations Guide for BICY.</p>							
<b>8. Division/Group Communication Summary</b>							
Function	Channel	RX Frequency N/W	RX Tone/NAC	TX Frequency N/W	TX Tone/NAC	Mode	
BICY RPTR	2	172.4250	1035	171.6250	1035	D	
TACTICAL	11	166.7250	0659	166.7250	0659	D	
AIR TO GROUND	10	168.3250		168.3250		A	
<b>9. Prepared By (Resource Unit Leader)</b>			<b>Approved By (Planning Section Chief)</b>			<b>Date</b>	<b>Time</b>
SUE WILDER/STEVE WELLS			TERRY PIERCE/DAVE DOBBS			04/22/2017	0427



## INCIDENT RADIO COMMUNICATIONS PLAN (ICS 205)

3. Operational Period: DAY									
Date/Time From: 04/23/2017 0800			Date/Time To: 04/23/2017 2000						
Zone Group	Ch #	Function	Assignment	RX Freq	RX Tone/NAC	TX Freq	TX Tone/NAC	Mode (A,D, or M)	Remarks
	1	CARNS RPT	Initial Attack	172.4250	1035	170.1000	1035	D	Preserve RPTR
	2	OASIS RPT	Initial Attack	172.4250	1035	171.6250	1035	D	Preserve RPTR
	3	BCY LCL	Structure/Div S	166.7750	No Tone	166.7750	No Tone	A	
	4	BICY TAC 1	Division A /D	168.6000	No Tone	168.6000	No Tone	A	
	5	BICY LCL 2	DIVISION G	168.2500	No Tone	168.2500	No Tone	A	
	6	A/G 59	Initial Attack	169.1125	No Tone	169.1125	No Tone	A	
	7	Panther RPT	Initial Attack Parliament	164.6250	1188	163.1500	1188	D	Panther Refuge RPTR
	8	PANTHER TAC 1	DIVISION Z/K	166.7500	No Tone	166.7500	No Tone	A	
	9	PANTHER TAC 2	Initial Attack	166.8250	No Tone	166.8250	No Tone	A	
	10	A/G 85	ALL DIVISIONS	168.3250	No Tone	168.3250	No Tone	A	
	11	Everglades TAC 1	Parliament Misc.	166.7250	0659	166.7250	0659	D	
	12	CMD 12	DIVISION A/Z	166.6125	No Tone	168.4000	110.9	A	Command RPTR-Linked
	13	CMD 13	DIVISION D/G/Z	168.7000	No Tone	170.9750	110.9	A	Command RPTR-Linked
	14	A/G	Aerial Ignition	167.9500	No Tone	167.9500	No Tone	A	
	15	CMD 15	DIV G	173.0375	No Tone	167.3250	110.9	A	Command RPTR-Linked
	16	AIR GUARD		168.6250	No Tone	168.6250	110.9	A	
Name: MARK SPANN				Signature: /s/ Mark Spann					
				Date/Time: 04/22/2017 1600					

## STATE IA RADIO COMMUNICATIONS PLAN (ICS 205)

3. Operational Period: DAY									
Date/Time From: 04/23/2017 0800			Date/Time To: 04/23/2017 2000						
Zone Group	Ch #	Function	Assignment	RX Freq	RX Tone/NAC	TX Freq	TX Tone/NAC	Mode (A,D, or M)	Remarks
	1	CARNS RPT	Initial Attack	172.4250	1035	170.1000	1035	D	BICY Preserve RPTR
	2	OASIS RPT	Initial Attack	172.4250	1035	171.6250	1035	D	BICY Preserve RPTR
	3	BCY LCL	Structure/Div S	166.7750	No Tone	166.7750	No Tone	A	
	4	A/G PRI	STATE IA	170.4750	No Tone	170.4750	No Tone	A	
	5	A/G SEC	STATE IA	168.6750	No Tone	168.6750	No Tone	A	
	6	A/G 59	Initial Attack	169.1125	No Tone	169.1125	No Tone	A	
	7	Panther RPT	Initial Attack Parliament	164.6250	1188	163.1500	1188	D	Panther Refuge RPTR
	8	PANTHER TAC 1	DIVISION Z/K	166.7500	No Tone	166.7500	No Tone	A	
	9	PANTHER TAC 2	Initial Attack	166.8250	No Tone	166.8250	No Tone	A	
	10	A/G 85	ALL DIVISIONS	168.3250	No Tone	168.3250	No Tone	A	
	11	Everglades TAC 1	Parliament Misc.	166.7250	0659	166.7250	0659	D	
	12	RED V22	STATE IA	154.2650	No Tone	154.2650	156.7	A	
	13	WHITE V21	STATE IA	154.2800	No Tone	154.2800	156.7	A	
	14	BLUE V23	STATE IA	154.2950	No Tone	154.2950	156.7	A	
	15	CMD 15	DIV G	173.0375	No Tone	167.3250	110.9	A	Command RPTR-Linked
	16	AIR GUARD		168.6250	No Tone	168.6250	110.9	A	
Name: MARK SPANN				Signature: /s/ Mark Spann					
				Date/Time: 04/22/2017 1600					

## MEDICAL PLAN (ICS 206)

<b>1. Incident Name:</b> Cowbell Fire		<b>2. Operational Period:</b> Date From: 04-23-17 Date To: 04-23-17 Time From: 0800 Time To: 2000					
<b>3. Medical Aid Stations:</b>							
Name	Location	Contact Number(s)/Frequency	Paramedics on Site?				
Shanna Ellis (MEDL)/Matt Moran (T)	Medical ICP	318-229-6515/907-887-1539	<input type="checkbox"/> Yes	<input checked="" type="checkbox"/> No			
Tom Christian (EMPF)/Brandon Little (EMTF)	Division Z	727-389-2481/815-575-1563	<input checked="" type="checkbox"/> Yes	<input type="checkbox"/> No			
Frank Abel (EMPF)/Adam White (EMPF)	Division A/D	423-595-1578/910-391-9053	<input checked="" type="checkbox"/> Yes	<input type="checkbox"/> No			
Chris Santopietro (EMTF)/Shawn Clark (EMPF)	Division IA	303-913-4149/918-770-5029	<input checked="" type="checkbox"/> Yes	<input type="checkbox"/> No			
Cody Gilmore (EMPF)/Brad Burns (EMTF)	Division MM 87	918-703-9103/479-427-1095	<input checked="" type="checkbox"/> Yes	<input type="checkbox"/> No			
Lionel Van Gulp (EMPF)/Clark Wade (EMPF)	Division G	928-235-7059/804-387-6188	<input checked="" type="checkbox"/> Yes	<input type="checkbox"/> No			
<b>4. Transportation (indicate air or ground):</b>							
Ambulance Service	Location	Number(s)/Frequency	Level of Service				
Collier County EMS (ground)	Everglades City (Medic 61)	911	<input checked="" type="checkbox"/> ALS	<input type="checkbox"/> BLS			
Collier County Med-Flight (air)	Naples Airport	911	<input checked="" type="checkbox"/> ALS	<input type="checkbox"/> BLS			
6HX Bell 205 (air) medical evacuation	Oasis Heli-base	168.3250 (A/G 85)	<input type="checkbox"/> ALS	<input checked="" type="checkbox"/> BLS			
Miami Dade Fire Rescue air hoist	Miami	911	<input type="checkbox"/> ALS	<input checked="" type="checkbox"/> BLS			
<b>5. Hospitals:</b>							
Hospital Name	Address	Contact Number(s)	Travel Time		Trauma Center	Burn Center	Helipad
			Air	Ground			
Physicians Regional Collier Blvd	8300 Collier Blvd. Naples, FL 34114 Lat:26°6.313'/Long: -81°41.106'	239-354-6000 (Main) 239-354-6190 (ER)	15	50	<input type="checkbox"/> Yes Level: _____	<input type="checkbox"/> Yes <input checked="" type="checkbox"/> No	<input checked="" type="checkbox"/> Yes <input type="checkbox"/> No
Physicians Regional Pine Ridge	6101 Pine Ridge Road, Naples 34119 Lat:26°12.833'/Long: -81°43.954'	239-348-4000 (Main) 239-304-4748 (ER)	15	50	<input type="checkbox"/> Yes Level: _____	<input type="checkbox"/> Yes <input checked="" type="checkbox"/> No	<input checked="" type="checkbox"/> Yes <input type="checkbox"/> No
Naples Community Hospital	350 7 <sup>th</sup> Street North, Naples 34102 Lat:26°9.046'/Long: -81°47.907'	239-513-7709 (Main) 239-436-5151 (ER)	15	60	<input checked="" type="checkbox"/> Yes Level: <u>2</u>	<input type="checkbox"/> Yes <input checked="" type="checkbox"/> No	<input checked="" type="checkbox"/> Yes <input type="checkbox"/> No
Jackson Memorial Hospital	1611 NW 12 Avenue, Miami Lat:25°47.508'/Long: -80°12.756'	305-585-1111 (Main) 305-585-6910 (ER)	20	60	<input checked="" type="checkbox"/> Yes Level: <u>1</u>	<input checked="" type="checkbox"/> Yes <input type="checkbox"/> No	<input checked="" type="checkbox"/> Yes <input type="checkbox"/> No
Kendal Regional Medical Center	11750 SW 40 <sup>th</sup> St., Miami 33175 Lat:25°43.916'/Long: -80°23.148'	305-223-3000 (Main) 305-227-5544 (ER)	20	50	<input checked="" type="checkbox"/> Yes Level: <u>1</u>	<input type="checkbox"/> Yes <input checked="" type="checkbox"/> No	<input checked="" type="checkbox"/> Yes <input type="checkbox"/> No
<b>6. Special Medical Emergency Procedures:</b>							
<b>Once any injury/illness has occurred:</b>							
<ul style="list-style-type: none"> <li>Report all injuries/illnesses to Division Supervisors (or designees) who will assume command and notify any assigned DIVS Medical Personnel and DIVS Safety Officer.</li> <li>DIVS will notify ICP Communications. <b>DO NOT USE THE INJURED PERSON'S NAME ON THE RADIO.</b></li> <li>ICP Communications will notify MEDL and Incident Safety Officer to assist with the coordination of further medical care and mode of transportation.</li> <li>Any on-Scene medical personnel will stabilize patient.</li> <li>Ambulance and/or air resources will be coordinated through ICP Communications, MEDL, and SOFI.</li> </ul>							
ICP: Contact Medical Unit with patient complaint/condition and location.							
<ul style="list-style-type: none"> <li><b>ASSIGNED MEDICAL PERSONNEL - CHECK IN WITH COMMUNICATIONS ON ARRIVAL TO LINE AND WHEN MOVED BY DIVS OR SAFETY. SPECIFY IF STAGING IN PLACE OR ROVING SECTIONS.</b></li> <li><b>Request that FFTR/Engine Crews or Single Resources let DIVS know if they have any EMTs or Paramedics and if they have equipment with them.</b></li> </ul>							
<b>7. Prepared by (MEDL):</b> Matthew Moran (T)/ Shanna Ellis Signature: <i>/s/ Matthew Moran Shanna F. Ellis</i>							
<b>8. Approved by (SOF1):</b> Brian Beisel Signature: <i>/s/ Brian Beisel</i>							
ICS 206		IAP Page _____		Date/Time: <u>04/22/2017</u>			



## **TRAINING MESSAGE**



**TRAINEES:** IF YOU ARE WORKING ON A POSITION TASKBOOK AND HAVE NOT CHECKED IN WITH THE TRAINING SECTION, PLEASE DO SO AS SOON AS POSSIBLE.

**ITEMS TO BRING TO TRAINING SECTION:** POSITION TASKBOOK, QUALIFICATION CARD (REDCARD), AND EVALUATOR NAME/ORDER NUMBER.

**PLEASE NOTE:** IF YOUR TRAINER/EVALUATOR IS DEMOBING AND/OR CHANGES, PLEASE COMPLETE THE ICS 225 AND PTB EVALUATOR PAGE. PLEASE REPORT TO THE TRAINING SECTION TO UPDATE NEW TRAINER/EVALUATOR INFORMATION.

**TRAINING SECTION IS LOCATED IN TRAILER WITH PLANS, GISS AND ITSS.**

MARY LEATHERS, TRAINING SPECIALIST      979-218-3030

TONY WHITE, TRAINING SPECIALIST      803-238-5747

"A plan is nothing; planning is everything."

General Dwight D. Eisenhower

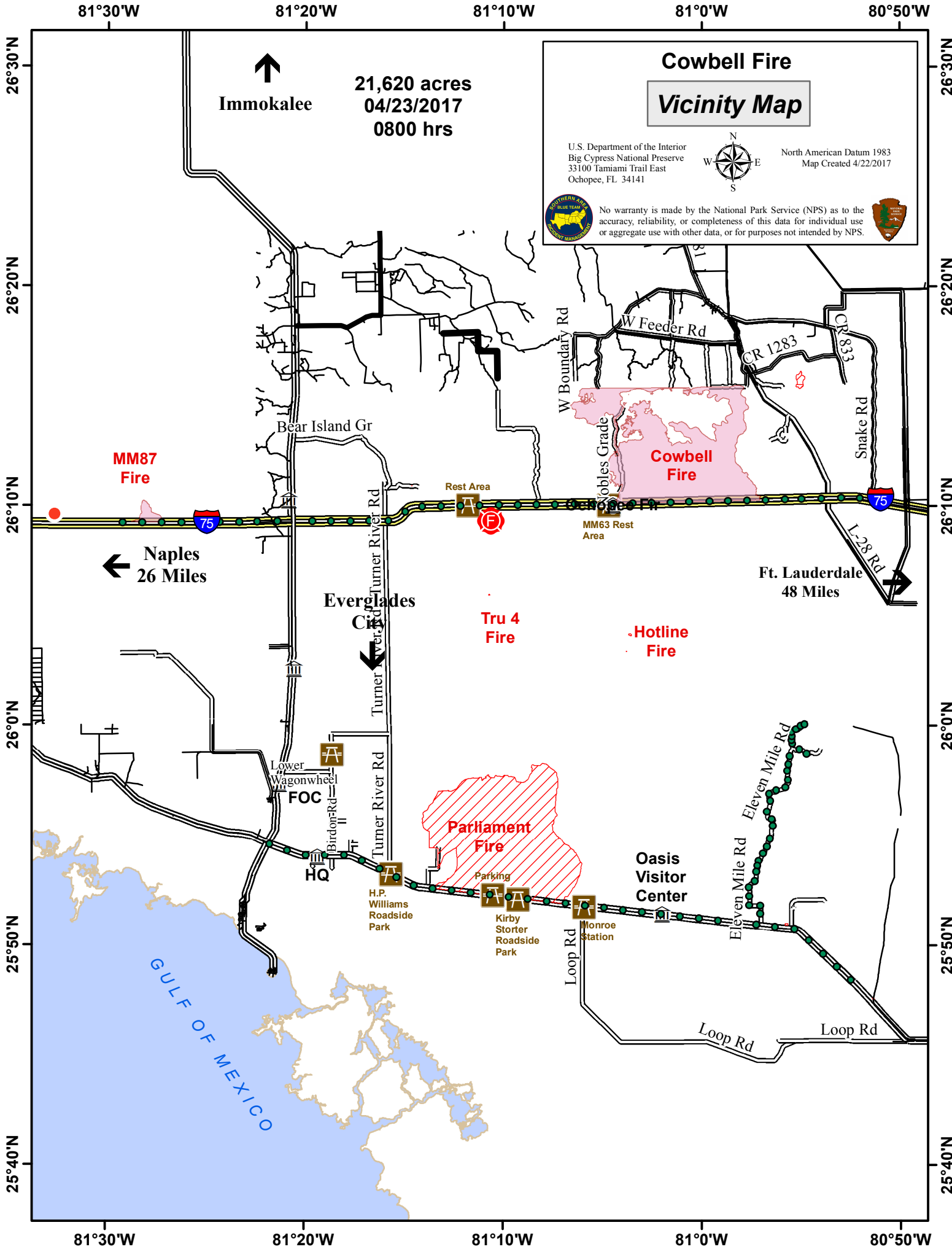
# Tentative DMOB for 4/23 to 4/27

DEMOB DATE	REQ #	RESOURCE NAME	KIND	TRV	JETPORT
04/23/2017	E-64	ATV - FIRE - SWAMP BUGGY 2	ATV		
04/23/2017	E-89	ENGINE - T6 - 607	ENG6		
04/23/2017	O-18	BRUINGTON, ROBERT	EMTF	A/R	SLC
04/23/2017	O-29	BENZILIO, JACK	SEMG	A/R	DRO
04/23/2017	O-124	BARR, JESSE M	HEQB	A/R	TUS
04/23/2017	O-190.40	BAKER, JARED LEATH	BCMG	AIR	BNA
04/24/2017	O-8	BROWNLOW, SCOTT R	RADO	A/R	ABQ
04/24/2017	O-21	MODULE - SUPPRESSION - NPS #1	HCM	AOV	LIT
04/24/2017	O-113	RAY, JAMES M	THSP	A/R	BZN
04/24/2017	O-129	DARGAN, CHRIS	THSP	A/R	HLN
04/24/2017	O-190.54	SOLBERG, LESLIE LOUISE	PROC	A/R	PDX
04/24/2017	O-229	DOBBS, DAVE E	PSC1	A/R	PHX
04/25/2017	E-39	CAPTAIN STEVE'S SWAMP BUGGY AD.	ATV	OTH	
04/25/2017	E-40	CAPTAIN STEVE'S SWAMP BUGGY AD.	ATV	OTH	
04/25/2017	E-65	ATV - FIRE - SWAMP BUGGY 3	ATV		
04/25/2017	E-80	ATV - PANTHER FIRE BUGGY (SLIMER)	ATV		
04/25/2017	E-83	GEO-BOY	MAST		
04/25/2017	O-1	NEWLAND, STEVEN M	HECM	POV	MIA
04/25/2017	O-2	CARNALL, ROBERT	HMGB	POV	MIA
04/25/2017	O-3	GILL, ANDREW P	HMGB	POV	MIA
04/25/2017	O-4	DECK, BRIAN	HMGB	AOV	FAI
04/25/2017	O-125	SHACKELFORD, ROBERT E	STOP	AOV	ORF
04/25/2017	O-127	CZERNIK, HELEN	INBA	A/R	ORF
04/25/2017	O-128	MCHAN, JASON	EQPM	AOV	TYS
04/25/2017	O-135	FOCO JR, DONALD HOWARD	SOFR	A/R	PLN
04/25/2017	O-144	WORLEY, WILLARD R	TFLD	A/R	LEX
04/25/2017	O-190.18	HICKERSON, HENRY B	DMOB	AIR	ROA
04/25/2017	O-1002	GOODWIN, FRED	PILO		
04/26/2017	E-38	CAPTAIN STEVE'S SWAMP BUGGY AD.	ATV	OTH	
04/26/2017	E-121	ENGINE - T6 - WILDLANDS FIRE SERVICE INC - 339712 - 9	ENG6	OTH	
04/26/2017	E-122	ENGINE - T6 - WILDLANDS FIRE SERVICE INC - C93328 - 5	ENG6	OTH	
04/26/2017	O-36	ABEL, FRANK	EMPF	POV	CHA
04/26/2017	O-57	HERRING, SHANNON SAMUEL	COMT	AOV	ATL
04/26/2017	O-122	MCDERMOTT, PETER	HECM	AIR	TYS
04/26/2017	O-142	KELLY, CHRISTOPHER T	SEC1	A/R	BOS
04/26/2017	O-148	JOHNSON, MICAH DARRELL	DIVS	A/R	SEA
04/26/2017	O-154	YOUNG, JOANNE	READ	A/R	CEZ
04/27/2017	E-41	CAPTAIN STEVE'S SWAMP BUGGY AD.	ATV	OTH	
04/27/2017	E-58	ENGINE - T6 - ATTACK-ONE FIRE MANAGEMENT SERVICES INC	ENG6	OTH	
04/27/2017	E-86	ENGINE - T6 - FIRE TRAX LLC - B65014 - 610	ENG6	OTH	
04/27/2017	O-54	CRODDY, KRIS	SOFR	A/R	TUS
04/27/2017	O-60	KIBBE, HAROLD L	TFLD	A/R	TVC
04/27/2017	O-80	ROOF, MIKE	HEB2	AOV	RSW
04/27/2017	O-121	BANNON, BAIN	SEC1	AOV	AEX
04/27/2017	O-143	GARNER, STANLEY	SEC1	AOV	ATL
04/27/2017	O-176	SALEMI, TERRI B	THSP	A/R	ATL





COWBELL FIRE ICP



# Cowbell Fire

## Vicinity Map

U.S. Department of the Interior  
 Big Cypress National Preserve  
 33100 Tamiami Trail East  
 Ochopee, FL 34141

North American Datum 1983  
 Map Created 4/22/2017



No warranty is made by the National Park Service (NPS) as to the accuracy, reliability, or completeness of this data for individual use or aggregate use with other data, or for purposes not intended by NPS.



**↑**  
 Immokalee

**21,620 acres**  
**04/23/2017**  
**0800 hrs**

**MM87 Fire**

**← Naples**  
**26 Miles**

**Everglades**

**Tru 4 Fire**

**Hotline Fire**

**Ft. Lauderdale**  
**48 Miles**

**Parliament Fire**

**Oasis Visitor Center**

**GULF OF MEXICO**

Bear Island Gr

W Boundary Rd

W Feeder Rd

CR 1283

Snake Rd

Turner River Rd

Turner River Rd

Lower Wagonwheel Rd

Birdon Rd

Loop Rd

Loop Rd

Loop Rd

Rest Area

MM63 Rest Area

HQ

H.P. Williams Roadside Park

Parking

Kirby Storter Roadside Park

Monroe Station

Eleven Mile Rd

Eleven Mile Rd

Eleven Mile Rd

Rest Area

MM63 Rest Area

HQ

H.P. Williams Roadside Park

Parking

Kirby Storter Roadside Park

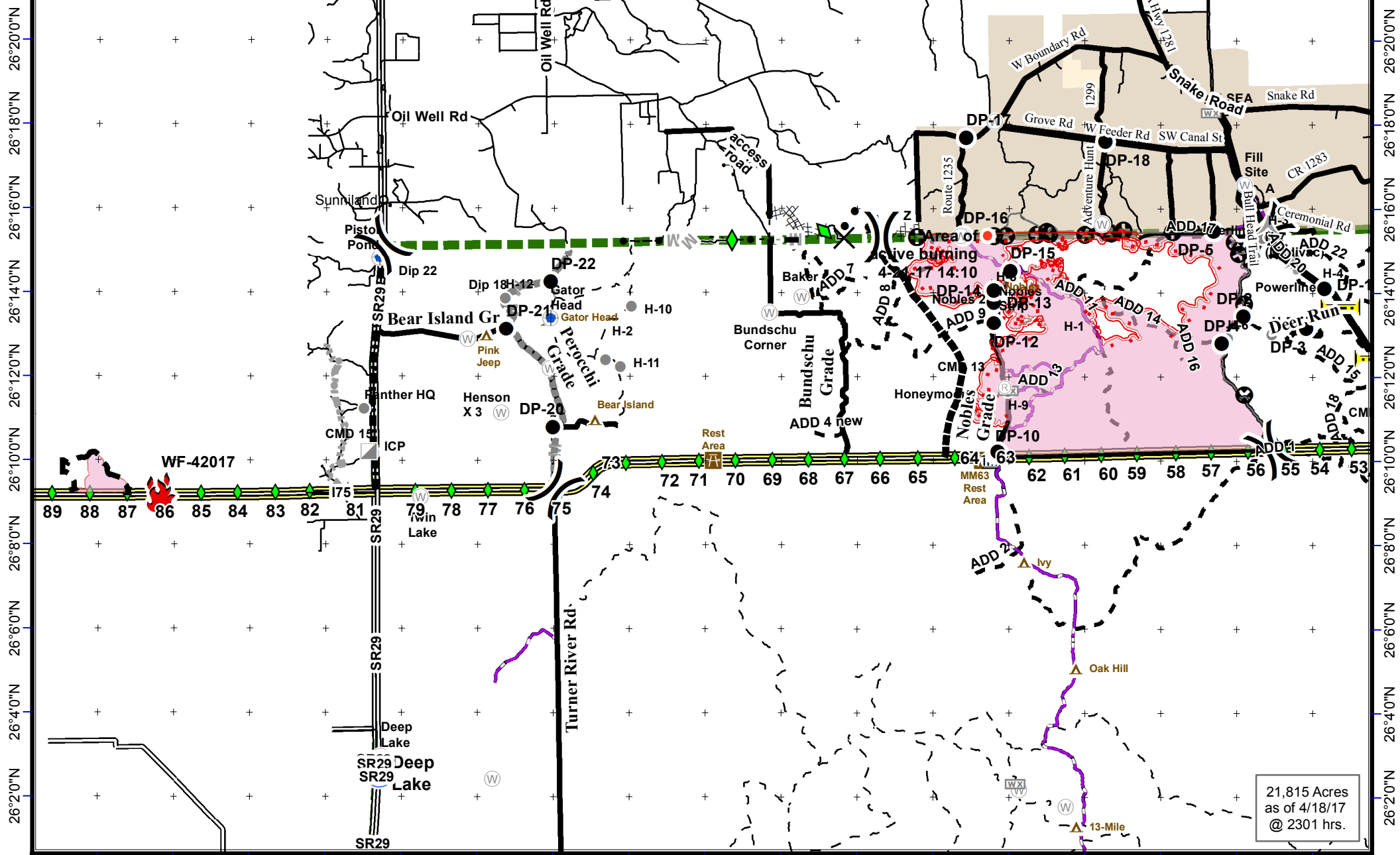
Monroe Station

Eleven Mile Rd

Eleven Mile Rd

Eleven Mile Rd





21,815 Acres  
as of 4/18/17  
@ 2301 hrs.

**Cowbell Fire**  
FL-BCP-017033  
**IAP Map**  
April 23, 2017  
Day Shift



- |                        |                |                       |                     |
|------------------------|----------------|-----------------------|---------------------|
| Uncontrolled Fire Edge | Rain Gauge     | Incident Command Post | Helibase            |
| Completed Line         | Drop Point     | Repeater              | Bridge Locations    |
| M - M Mastication Line | Helispot       | Aerial Hazard         | I - 75              |
| Completed Disk Line    | Division       | Private Structures    | Improved Road       |
| Proposed Line          | Mobile Weather | NPS Property          | Primary Buggy Trail |

NAD 83 UTM 11  
0 0.5 1 2 3 4  
Mil

**PHONE LIST - COWBELL FIRE** as of 4/22/2017

Position	Name	Phone Number	Position	Name	Phone Number
<b>COMMAND</b>			<b>OPERATIONS</b>		
Incident Commander	Mike Wilkins	828-421-5026	Ops Section Chief	Paul Reynolds	662-418-9743
Incident Commander (T)	Andy Baker	706-400-2150	Ops Section Chief Deputy	Dwight Snow	352-516-4969
Deputy Incident Commander	Mark Morales	479-264-7991	Ops Section Chief Deputy (T)	Jay Collett	540-292-1-038
Liaison Officer	Andy Gaston	706-508-2363	Planning Ops	Michael Heard	334-488-5966
Liaison Officer (T)	Jeff Owenby	828-388-0401	Planning Ops (T)	Paul Varnedoe	904-271-1138
Public Information	Terry Krasko	479-280-0452	Division A/D	Kerry Clark	205-272-2424
Public Information (T)	Michael R Williams	470-599-3926	Division G	Vic Doig	352-493-3155
Safety Officer	Brian Beisel	270-978-1610	Division K	Tim Nutley	479-227-0893
Safety Officer	Ivan Cupp	405-990-7155	Division Initial Attack	Chris Wilson	918-314-7264
			Mile Marker 87 Fire	Shawn Nagle	662-231-4024
			Divison Z	Micah Johnson	360-301-4728
<b>PLANNING</b>			<b>AIR OPERATIONS</b>		
Chief	Terry Pierce	423-596-2694	Air Ops Branch Director	John Bragg	423-483-2798
Chief	Dave Dobbs	928-699-5706	Air Ops Branch Director (T)	Mike Mowery	870-214-0034
Chief (T)	Michael J Williams	828-835-0094	Air Tactical Group Supervisor	Steve Little	828-778-2077
Situation Unit Leader	Scott Hamlet	918-448-3111	Air Support Group Supervisor	Matt Clinton	208-634-9414
Resource Unit Leader	Sue Wilder	985-264-2288	Oasis Helibase Manager	Mark Oetzmann	208-315-5030
Resource Unit Leader	Steve Wells	803-603-0502			
Technology Support T)	Scott Bishaw	239-595-9143			
Fire Behavior Analyst	Glenn Fortenberry	501-762-3751			
Air Resource Advisor	Trent Wickam	218-341-8646			
READ	JoAnne Young	970-422-2246	<b>LOGISTICS</b>		
IMET	Steven Ippoliti	954-826-9405	Chief	Cindy Schiffer	540-230-1269
GISS	Alan Smith	903-261-3294	Chief	Bill Lisowsky	270-816-7417
GISS	Katy McCurdy	404-210-3996	Chief (T)	Terry Holsclaw	435-201-4443
Demob	Henry Hickerson	540-798-2218	Ground Support Unit Leader	Joe Emberson	580-317-5315
Training Specialist (T)	Mary Leathers	979-218-3030	Ground Support Unit Leader	Randy Chapin	601-405-5711
Training Specialist	Tony White	803-238-5747	Ordering Manager	Sandy Rhodes	501-282-0085
Technology Support	Dan Leduc	318-613-0362	Ordering Manager	Natalie Broce	540-968-3734
Technology Support	Scotty Grest	770-595-1521	Supply Unit Leader	Bill Kitchings	601-741-2296
Status Checkin	Teresa Moss	828-361-5301	Facilities	Steve Frick	
Status CheckIn	Allison Cochran	256-566-5509	Facilities (T)	Jamie Jones	864-933-4165
			Communications	Mark Spann	936-208-0488
			Comms Trailer		772-631-2573
<b>FINANCE</b>			Medical Unit Leader	Shanna Ellis	318-229-6515
Chief	Randee Olson	218-370-0561	Security Manger	David Clark	573-714-5142
Apprentice	Mike Morris	337-718-2153	Medical Unit Leader (T)	Matt Moran	907-887-1539
Time Unit Leader	Sandra Fix	540-460-2509	Security	Chris Kelly	978-580-9245
Time Unit Leader (T)	Kelly Donaldson	580-236-9339	Security	Bain Bannon	318-446-1759
Time Unit Leader (T)	Petra Setlich	423-4322840	Security	Sam Maldonado	909-522-6905
Cost Unit Leader	Susan Deimel	501-337-3598	Security	Stanley Garner	352-672-1036
Cost Unit Leader (T)	Julie Chisholm	979-248-2265			
Comp/Claims	Donna Rogers	803-295-3033			
Procurement	Leslie Solberg	360-553-9830	Big Cypress National Preserve	Duty Officer	239-719-0241

### Medical Incident Report- "9 Line"

**FOR ALL MEDICAL EMERGENCIES: IDENTIFY ON SCENE INCIDENT COMMANDER BY NAME AND POSITION AND ANNOUNCE "MEDICAL EMERGENCY" TO INITIATE RESPONSE FROM IMT COMMUNICATIONS/DISPATCH.**

Use items one through nine to communicate situation to communications/dispatch.

**1. CONTACT COMMUNICATIONS-**

*Ex: "Cowbell Communications, Div. Alpha. Stand-by for Priority Medical Incident Report." (If life threatening request designated frequency be cleared for emergency traffic.)*

**2. INCIDENT STATUS: Provide incident summary and command structure.**

Nature of Injury/Illness		Describe the injury <i>(Ex: Broken leg with bleeding)</i>
Incident Name		Geographic Name + "Medical" <i>(Ex: Trout Meadow Medical)</i>
Incident Commander		Name of IC
Patient Care		Name of Care Provider <i>(Ex: EMT Smith)</i>

**3. INITIAL PATIENT ASSESSMENT: Complete this section for each patient. This is only a brief, initial assessment. Provide additional patient info after completing this 9 Line Report.**

Number of Patients:	Male / Female	Age:	Weight:
Conscious? <input type="checkbox"/> YES <input type="checkbox"/> NO = MEDEVAC!			
Breathing? <input type="checkbox"/> YES <input type="checkbox"/> NO = MEDEVAC!			
Mechanism of Injury: <i>What caused the injury?</i>			
Lat/Long (Datum NAD83)			

**4. SEVERITY OF EMERGENCY, TRANSPORT PRIORITY**

SEVERITY	TRANSPORT PRIORITY
<input type="checkbox"/> <b>URGENT-RED</b> Life threatening injury or illness. <i>Ex: Unconscious, difficulty breathing, bleeding severely, 2° – 3° burns more than 4 palm sizes, heat stroke, disoriented.</i>	Ambulance or MEDEVAC helicopter. Evacuation need is IMMEDIATE.
<input type="checkbox"/> <b>PRIORITY-YELLOW</b> Serious Injury or illness. <i>Ex: Significant trauma, not able to walk, 2° – 3° burns not more than 1-2 palm sizes.</i>	Ambulance or consider air transport if at remote location. Evacuation may be DELAYED.
<input type="checkbox"/> <b>ROUTINE-GREEN</b> Not a life threatening injury or illness. <i>Ex: Sprains, strains, minor heat-related illness.</i>	Non-Emergency. Evacuation considered Routine of Convenience.

**5. TRANSPORT PLAN:**

Air Transport: (Agency Aircraft Preferred)

<input type="checkbox"/> Helispot	<input type="checkbox"/> Short-haul/Hoist	<input type="checkbox"/> Life Flight	<input type="checkbox"/> Other
Ground Transport:			
<input type="checkbox"/> Self-Extract	<input type="checkbox"/> Carry-Out	<input type="checkbox"/> Ambulance	<input type="checkbox"/> Other

**6. ADDITIONAL RESOURCE/EQUIPMENT NEEDS:**

<input type="checkbox"/> Paramedic/EMT(s)	<input type="checkbox"/> Crew(s)	<input type="checkbox"/> SKED/Backboard/C-Collar
<input type="checkbox"/> Burn Sheet(s)	<input type="checkbox"/> Oxygen	<input type="checkbox"/> Trauma Bag
<input type="checkbox"/> Medication(s)	<input type="checkbox"/> IV/Fluid(s)	<input type="checkbox"/> Cardiac Monitor/AED
<input type="checkbox"/> Other (i.e. splints, rope rescue, wheeled litter)		

**7. COMMUNICATIONS:**

Function	Channel Name/Number	Receive (Rx)	Tone/NAC *	Transmit (Tx)	Tone/NAC *
COMMAND	CARNS Rpt Channel 1	172.4250	1035	170.1000	1035
COMMAND	OASIS Rpt Channel 2	172.4250	1035	171.6250	1035
COMMAND	CMD Channel 12	166.6125	No Tone	168.4000	110.9
AIR-TO-GRND	AG/85 Channel 10	168.3250	No Tone	168.3250	No Tone
TACTICAL					

\*(NAC for digital radio system)

**8. EVACUATION LOCATION:**

Lat/Long (Datum NAD83) <i>EX: N 40 42.45' x W 123 03.24'</i>	
Patient's ETA to Evacuation Location:	
Helispot/Extraction Size and Hazards:	

**9. CONTINGENCY:**

<b>Considerations:</b> <i>If primary options fail, what actions can be implemented in conjunction with primary evacuation method? Be thinking ahead...</i>	<b>REMEMBER:</b> <b>Confirm ETA's of resources ordered Act according to your level of training Be Alert. Keep Calm. Think Clearly. Act Decisively.</b>
--	--



