



Incident Action Plan

Day Operational Period

Monday

4/24/17

0800-2000

Cowbell Fire

FL-BCP-017033

PPKX1417 (1502) / FFF2000000KX140

(21,724 acres, 75% contained)

MM 87

FL-FPR-170001

PRKZP317 (1502) / FFF2000000KZP30

(516 acres, 80% contained)



QR CODE
INCIDENT MAP

STOP....THINK...TALK... *THEN ACT!*

INCIDENT OBJECTIVES	1. Incident Name Cowbell Fire	2. Date Prepared 4/23/217	3. Time Prepared 1200
4. Operational Period 4/24/17 0800 - 2000			
5. General Control Objectives For The Incident <u>Objectives for the Incident:</u> <ul style="list-style-type: none"> • Protection of human life is top priority through the use of sound risk management decisions that are commensurate with values at risk. • Protect private property and infrastructure, federal facilities, critical transportation corridors, recreational and cultural resource values, T&E species and their habitat (e.g. Florida Panther, Florida bonneted bat, Red-Cockaded Woodpecker), and wilderness values through coordination with READS and following MIST Tactics on initial and extended attack fires. • Provide opportunities to communicate and educate the public on the role of fire in the BCP and FPR ecosystems through social media and other outlets. • Provide training opportunities for Preserve, State, and local federal fire agency personnel to actively enhance successional planning of future firefighting personnel. • Sustain and enhance relationships with the people we serve. 			
<u>Control Objectives:</u> <ul style="list-style-type: none"> • Utilize confine, contain, and point source protection strategies and tactics that commit responders only to operations where and when they can be successful. • In order to minimize impacts to high values including Seminole and Miccosukee tribal lands, Sanctuary community, and private land within and near to the boundaries of the Big Cypress National Preserve and Florida Panther Wildlife Refuge, keep Cowbell fire: <ul style="list-style-type: none"> ○ West of Add 14 and Add 17 ○ South of the Preserve boundary ○ North of Interstate 75 ○ East of State Highway 29 • In order to minimize impacts to infrastructure and private land within and adjacent to the Florida Panther Wildlife Refuge, keep the MM87 fire: <ul style="list-style-type: none"> ○ West of Fakahatchee Strand. ○ North of I-75. ○ South and east of the refuge boundary. • Provide initial attack for Big Cypress National Preserve and Florida Panther Refuge in coordination with local resources. • Minimize smoke impacts on I-75, State Road 29 and US Highway 41 in order to avoid safety threats to the public. 			
6. Weather forecast for Period See attached weather forecast.			
7. General Safety Message Look up, look down, look all around for hazards, recognize them and mitigate them.			
8. ATTACHMENTS (X IF ATTACHED) <input checked="" type="checkbox"/> Organization List - ICS 203 <input checked="" type="checkbox"/> Medical Plan - ICS 206 <input checked="" type="checkbox"/> <u>Base Camp Map</u> <input checked="" type="checkbox"/> Division Assignment Lists - ICS 204 <input checked="" type="checkbox"/> Air Ops – ICS 220 <input checked="" type="checkbox"/> <u>Vicinity Map</u> <input checked="" type="checkbox"/> Communications Plan - ICS 205 <input checked="" type="checkbox"/> Incident Map <input checked="" type="checkbox"/> <u>Phone List</u>			
9. Prepared By (Planning Section Chief) Terry Pierce/Michael J Williams		10. Approved By (Incident Commander) Michael L Wilkins	

ORGANIZATION ASSIGNMENT LIST (ICS 203)

1. Incident Name:		2. Operational Period: DAY	
COWBELL		Date/Time From: 04/24/2017 0800 MON	Date/Time To: 04/24/2017 2000 MON
3. Incident Commander(s) and Command Staff:		CHIEF TERRY HOLSCLOW (T)	
IC/UC	MICHAEL WILKINS	SUPPLY UNIT	BILL KITCHINGS / SANDY RHODES(T)
DEPUTY	MARK MORALES	FACILITIES UNIT	STEVE FRICK / JAMIE JONES(T)
LIAISON OFFICER	ANDY GASTON JEFF OWENBY (T)	GROUND SUPPORT UNIT	JOE EMBERSON / RANDY CHAPIN
SAFETY OFFICER	BRIAN BEISEL / IVAN CUPP	COMMUNICATIONS UNIT	MARK SPANN
INFORMATION OFFICER	TERRY KRASKO / MICHAEL R WILLIAMS(T)	MEDICAL UNIT	SHANNA F ELLIS / MATT MORAN(T)
4. Agency/Organization Representative(s):		SECURITY UNIT	DAVID CLARK
Agency/Organization	Name	ORDERING MANAGER	NATALIE BROCE / TAMMIE PERNAS(T)
BIG CYPRESS NATIONAL PRESERVE	TAMMY WHITTINGTON / J.D. LEE	RECEIVING AND DISTRIBUTION MANAGER	PRAWIT HESS
BICY CHIEF OF FIRE AND AVIATION	JORDON MCKNIGHT	7. Operations Section:	
BICY /PANTHER AFMO	BYRON HART	OPS SECTION CHIEF	PAUL REYNOLDS
PANTHER ZONE FMO	CASS PALMER	DEPUTY OPS SECTION CHIEF	DWIGHT SNOW; JAY COLLETT(T)
COLLIER COUNTY SHERIFF	LT. JAKE WALKER	PLANNING OPS	M. HEARD / P. VARNEDOE(T)
SEMINOLE TRIBE OF FLORIDA	MATT FLYING/GRANT STEELMAN	DIVISION/GROUP	A/D KERRY CLARK
FLORIDA HIGHWAY PATROL	LT. JOSEPH BOWERS	DIVISION/GROUP	G VICTOR DOIG
GREATER NAPLES FIRE RESCUE	J. NOLAN SAPP	DIVISION/GROUP	K TIM NUTLEY
FFS COLLIER CO. FOREST AREA SUP	TONY CURELLA	DIVISION/GROUP	Z M. JOHNSON / C. RICHARDS
FFS HENDRY CO. FOREST AREA SUP	JOE LECEA	DIVISION/GROUP	STRUCTURE PROTECTION JAY WALTER JT SOHR (T)
5. Planning Section:		DIVISION/GROUP	INITIAL ATTACK KRIS WILSON / A EDWARDS (T)
CHIEF	TERRY PIERCE/ MICHAEL J WILLIAMS(T)	DIVISION/GROUP	MM 87 FIRE SHAWN NAGLE
RESOURCES UNIT	SUE WILDER / STEVE WELLS	DIVISION/GROUP	PARLIAMENT AND MISC FIRES UNSTAFFED
SITUATION UNIT	SCOTT HAMLET	7b. Air Operations Branch:	
DOCUMENTATION UNIT	BOB SOBCZAK	AIR OPS BRANCH DIRECTOR	JOHN BRAGG / MIKE MOWERY(T)
DEMOBILIZATION UNIT	HENRY HICKERSON	AIR SUPPORT GROUP SUPERVISOR	MATT CLINTON
FIRE BEHAVIOR ANALYST	GLEN FORTENBERRY	AIR TACTICAL GROUP SUPERVISOR	STEVE LITTLE
TRAINING SPECIALIST	TONY WHITE / MARY LEATHERS(T)	OASIS HELIBASE MANAGER	MARK OETZMANN
GIS SPECIALIST	ALLEN SMITH / KATY MCCURDY	8. Finance/Administration Section:	
TECHNOLOGY SUPPORT SPECIALIST	DAN LEDUC / SCOTT GREEST SCOTT BISHAW (T)	CHIEF	RANDEE OLSON / MIKE MORRIS(A)
INCIDENT METEOROLOGIST	STEVEN IPPOLITI	TIME UNIT	S FIX, K DONALDSON(T), P SETLICH(T)
STATUS CHECKIN	T. MOSS / A. COCHRAN(T)	PROCUREMENT UNIT	LESLIE SOLBERG
AIR RESOURCE SPECIALIST	TRENT WICKMAN	COMPENSATION UNIT	DONNA ROGERS
6. Logistics Section:		COST UNIT	SUSAN DEIMEL / JULIE CHISHOLM(T)
CHIEF	C SCHIFFER / B LISOWSKY		
9. Prepared By:	Name: TERRY PIERCE/MICHAEL J WILLIAMS	Position/Title: PLANNING SECTION CHIEF	Signature:
ICS 203	IAP Page	Date/Time: 04/23/2017 0707	



Fire Weather Forecast

FORECAST NO:	22	NAME OF FIRE:	Cowbell Fire
PREDICTION FOR:	Sunday Day Shift	UNIT:	Big Cypress National Preserve
SHIFT DATE:	April 24, 2017	Incident Meteorologist:	<i>Steven Ippoliti</i>
FORECAST ISSUED:	1800 April 23, 2017		954-826-9405

DISCUSSION: A cold front will move across the area during the mid to late afternoon. There is a slight chance for showers and thunderstorms ahead of the front. A west gusty west wind will follow the frontal passage. A return to quiet weather is forecast for the remainder of the week.

TODAY (MONDAY DAY SHIFT):

WEATHER: Partly cloudy. Low possibility of showers and thunderstorms. A frontal passage in the afternoon.
WIND (20 FT): West at 5 to 10 mph in the morning, increasing to 15 mph, with gusts around 25 mph behind the front.
MAX TEMPERATURES: 84 to 86.
MIN RH: 65%.
Chance of measurable rain: 25% **LAL:** 2
DISPERSION: 65 MAX **MIXING HEIGHT:** 5500 **TRANSPORT WIND:** West 15 mph, increasing to 25 in the afternoon.

TONIGHT (MONDAY NIGHT):

WEATHER: Mostly cloudy in the evening and clearing overnight.
WIND (20 FT): West at 5mph.
MIN TEMPERATURES: Around 60.
MAX RH: 98 to 100%. **LVORI 9 (max).** **LAL:** 1 **Dispersion:** 2 **Chance measurable rain:** 10%.

TUESDAY:

WEATHER: Partly Cloudy.
WIND (20 FT): West southwest around 8 to 12 mph.
MAX TEMPERATURES: 84 to 87F.
MIN RH: 45%.
Chance of measurable rain: 5%. **LAL:** 1
DISPERSION: 65 MAX **MIXING HEIGHT:** 5500 **TRANSPORT WIND:** West 15 to 20 mph.

GENERAL OUTLOOK WEDNESDAY THROUGH FRIDAY: A return to quiet weather with high pressure building across the region. Sea breeze development will be possible each afternoon.

WIND: Wednesday: Southwest 5 to 10 mph Thursday: South 5 to 10 mph Friday: 5 to 10 mph
WEATHER/TEMPERATURE: Partly cloudy. Highs in the mid 80's. Lows around 60.
MIN RH: Wednesday: 42% Thursday: 40% Friday: 40%
NIGHT TIME RECOVERY: 95% to 100% each night.



Current Incident area RAWS

Sunrise Monday: 6:54 am
Sunset Monday: 7:54 pm

Source: US Naval Observatory



Weather Matrix

FIRE BEHAVIOR FORECAST

FORECAST NUMBER: #21

TYPE OF FIRE: Wildland

FIRE NAME: Cowbell

OPERATIONAL PERIOD: 04/24/2017

DATE ISSUED: 04/23/2017

TIME ISSUED: 1800

UNIT: Big Cypress Preserve

SIGNED: *Glen Fortenberry*

FUEL ASSUMPTIONS:

Primary fuels consist of grass, shrub, pine overstory with shrub palmetto understory and timber litter. Current fuel conditions are favorable for active fire behavior within the grass and shrub fuels in areas not receiving rain yesterday. Fire activity will greatly diminish in the wide cypress strands. The current drought conditions have led to both live and dead fuel moistures reaching levels of concern.

The fuel moisture for today is:

Calculated 1 hr fuel-12%, 10 hr fuel-23%, 100 hr fuel-18%, 1000 hr fuel-17%

Critical fire behavior thresholds: 1 HR Fuel Moisture <6%, RHs below 40% and a Dispersion Index greater than 60.

WEATHER: Partly cloudy, Low possibility of showers and thunderstorms. Frontal passage in the afternoon.

WIND (20 FT): West at 5 to 10 mph in the morning, increasing to 15 mph, with gust around 25 mph behind the front.

MAX TEMPERATURES: 84-86.

MIN RH: 65%.

LAL: 2

DISPERSION: 65 **MAX MIXING HEIGHT:** 5500 **TRANSPORT WINDS:** West 15mph, increasing to 25 in the pm.

General Fire Behavior Forecast:

Almost all areas within our IA zone received rain. In any area not receiving rain, expect moderate fire behavior with ROS less than 1/4 mph and spotting distance less than 1/4 mile.

Specific:

Cowbell: Only smoldering fire expected to occur in stump holes, snags and fallen logs. Utilize the damp conditions for good mop up.

MM 87: Only smoldering fire expected to occur in stump holes, snags and fallen logs. Utilize the damp conditions for good mop up.

Initial Attack: Expect moderate rates of spread in pine/palmetto fuel type and anticipate spotting to be minimal with the low probability of ignition.

PREDICTIONS FOR MOST ACTIVE TIME OF PEAK BURNING PERIOD USING WEATHER FROM INCIDENT IMET IN AREAS NOT RECEIVING RAIN.

Fuel Model	Fire Behavior
Grass	ROS 15-20 ch/hr, FL 3-4 ft.
Shrub	ROS 9-11 ch/hr, FL 5-7 ft
Timber Litter (Cypress)	ROS 1-2 ch/hr, FL 2-3 ft
Maximum Spotting	0.2mile
Probability of ignition	20% in all models

AIR OPERATIONS: Thunderstorms are possible. Any development could impact air operations.

FIRE BEHAVIOR SAFETY: Watch for burning snags in areas of mopup. Stronger winds in the afternoon can bring them down.

HEALTH AND SAFETY MESSAGE

If you SEE something...SAY something

INCIDENT: Cowbell & MM 87 Fire

DATE: 04/24/2017 **TIME:** Day Shift

Major Hazards and Risks:

- WET/MUDDY ROADS
- SECURE LOADS ON VEHICLES
- DISTRACTED DRIVING

With the rain we received yesterday the roads may be wet and muddy in some locations. Don't assume you can go to the same locations without considering changes in the road conditions. The rain totals vary widely so proceed with caution when driving.

Be sure the equipment you haul on trucks or trailers is completely secured. Worn or frayed straps don't have the strength needed to secure loads. Replace equipment that is unserviceable.

Are you checking trailer hitches for loose connections. The equipment being hauled is heavy, check your equipment frequently to ensure it is in working order. Check trailers lights prior to leaving ICP.



Distracted Driving

All assigned resources should not use their cell phone while driving. Keep your attention on the task at hand and let someone else answer your phone or the call go to voicemail.

Don't look at maps while driving, keep your eyes on the road.

Don't eat while driving, it takes your hand off the wheel.

Division/Group Assignment List (ICS 204 WF)

1. Incident Name:			3.			
COWBELL			Branch:		Division/Group: A / D	
2. Operational Period: DAY						
Date/Time From: 04/24/2017 0800 MON		Date/Time To: 04/24/2017 2000 MON				
4. Operations Personnel						
OPERATIONS CHIEF		PAUL REYNOLDS		DEPUTY OPERATIONS CHIEF		DWIGHT SNOW JAY COLLETT (T)
PLANNING OPERATIONS		MICHAEL HEARD PAUL VARNEDOE (T)		AIR OPERATIONS BRANCH DIRECTOR		JOHN BRAGG MIKE MOWERY (T)
DIVISION / GROUP SUPERVISOR		KERRY CLARK				
5. Resources Assigned this Period						
Strike Team / Task Force / Resource Designator		LWD	Leader	Number Persons	Drop Off PT./Time	Pick Up PT./Time
HEQB O-225		05/04	GARY ROSE	1	ICP/0800	ICP/2000
HCM MODULE - SUPPRESSION - BIFZ #2 O-106		04/30	SAM DE LONG	8	ICP/0800	ICP/2000
MAST MASTICATOR - HENDRY GRINDING E-159		05/04	CHAD MUDGE	1	ICP/0800	ICP/2000
READ O-154		04/25	JOANNE YOUNG	1	ICP/0800	ICP/2000
EMPF O-250		05/05	CODY GILMORE	1	ICP/0800	ICP/2000
EMPF O-251		05/06	LIONEL VAN GURP	1	ICP/0800	ICP/2000
6. Control Operations/Work Assignments:						
<p>Task:</p> <ul style="list-style-type: none"> • Patrol and mop up 25 feet. from control line • Monitor and patrol by air • Masticate access road in Sanctuary <p>Purpose:</p> <ul style="list-style-type: none"> • To keep fire confined and contained west of ADD 17/ADD 14 on east flank of fire • To protect structures and facilitate emergency evacuation. • To alert FHP of potential impact to I-75 • Keep fire contained north of I-75 <p>End State:</p> <ul style="list-style-type: none"> • Control fire perimeter west of ADD 17/ADD 14 to eliminate threat to Sanctuary area structures • Minimize risk to public traveling on I-75 • Confine fire perimeter to reduce threats to resource values at risk 						
7. Special Instructions:						
Establish and maintain LCES during operational period. Do not engage in fire suppression activities along I-75 shoulders unless traffic hazards have been mitigated. Follow the tracked vehicle requirement restrictions.						
8. Division/Group Communication Summary						
Function	Channel	RX Frequency N/W	RX Tone/NAC	TX Frequency N/W	TX Tone/NAC	Mode
COMMAND	12	166.6125		168.4000	110.9	A
COMMAND	13	168.7000		170.9750	110.9	A
TACTICAL	4	168.6000		168.6000		A
AIR TO GROUND	10	168.3250		168.3250		A
9. Prepared By (Resource Unit Leader)			Approved By (Planning Section Chief)		Date	Time
SUE WILDER, / STEVE WELLS, RESL			TERRY PIERCE / MICHAEL J WILLIAMS(T)		04/23/2017	0707

Division/Group Assignment List (ICS 204 WF)

1. Incident Name:			3.			
COWBELL			Branch:		Division/Group:	
2. Operational Period: DAY					G	
Date/Time From: 04/24/2017 0800 MON		Date/Time To: 04/24/2017 2000 MON				
4. Operations Personnel						
OPERATIONS CHIEF		PAUL REYNOLDS		DEPUTY OPERATIONS CHIEF		DWIGHT SNOW JAY COLLETT (T)
PLANNING OPERATIONS		MICHAEL HEARD PAUL VARNEDOE (T)		AIR OPERATIONS BRANCH DIRECTOR		JOHN BRAGG MIKE MOWERY (T)
DIVISION/GROUP SUPERVISOR		VICTOR DOIG				
5. Resources Assigned this Period						
Strike Team / Task Force / Resource Designator		LWD	Leader	Number Persons	Drop Off PT./Time	Pick Up PT./Time
TFLD O-178		04/29	GEORGE ALLALUNIS	1	ICP/0800	ICP/2000
TFLD O-223		04/29	NOAH DANIELS	1	ICP/0800	ICP/2000
TFLD O-106.4		05/02	DEVIN JOHNSON (T)	1	ICP/0800	ICP/2000
TFLD O-106.8		05/02	DOUGLAS CATES (T)	1	ICP/0800	ICP/2000
HC1 CREW - T1 - FLAGSTAFF IHC C-9		05/03	ANDREW M PATTERSON	20	ICP/0800	ICP/2000
HC2 MODULE - SUPPRESSION - SA - MODULE SMKJ#1 O-254		05/05	DANIEL COTTRELL	8	ICP/0800	ICP/2000
HEQB O-201		05/02	DAVID POOLE	1	ICP/0800	ICP/2000
HEQB O-224		05/04	JASON DEASY	1	ICP/0800	ICP/2000
HEQB O-226		05/04	TOM STEVENS (T)	1	ICP/0800	ICP/2000
MAVERICK BUGGY #2 E-66		05/27	MATT MATEO	1	ICP/0800	ICP/2000
ENG6 ENGINE - T6 - WILDLANDS FIRE SERVICE INC - 339712 - 9 E-121		04/25	DAVID HOGREFE	3	ICP/0800	ICP/2000
MAST MASTICATOR - BOOM MOUNTED, TYPE 3 - T 1736 JOHN DEERE E-6		05/12	CARLOS DE LA CRUZ	1	ICP/0800	ICP/2000
MAST DAVE'S EXCAVATING E-1051		05/02	RICK DUKES	1	ICP/0800	ICP/2000
MAST MASTICATOR -		05/04	WES O'CONNER	1	ICP/0800	ICP/2000
SWEEPER			DAVID LUCAS	1	ICP/0800	ICP/2000
8. Division/Group Communication Summary						
Function	Channel	RX Frequency N/W	RX Tone/NAC	TX Frequency N/W	TX Tone/NAC	Mode
COMMAND	13	168.7000		170.9750	110.9	A
COMMAND	15	173.0375		167.3250	110.9	A
TACTICAL	5	168.2500		168.2500		A
AIR TO GROUND	10	168.3250		168.3250		A
9. Prepared By (Resource Unit Leader)			Approved By (Planning Section Chief)		Date	Time
SUE WILDER/STEVE WELLS			TERRY PIERCE/MICHAEL J WILLIAMS(T)		04/23/2017	0707

Division/Group Assignment List (ICS 204 WF)

1. Incident Name:			3.			
COWBELL			Branch:		Division/Group:	
2. Operational Period: DAY					G	
Date/Time From: 04/24/2017 0800 MON		Date/Time To: 04/24/2017 2000 MON				
4. Operations Personnel						
OPERATIONS CHIEF		PAUL REYNOLDS		DEPUTY OPERATIONS CHIEF		DWIGHT SNOW JAY COLLETT (T)
PLANNING OPERATIONS		MICHAEL HEARD PAUL VARNEDOE (T)		AIR OPERATIONS BRANCH DIRECTOR		JOHN BRAGG MIKE MOWERY (T)
DIVISION/GROUP SUPERVISOR		VICTOR DOIG				
5. Resources Assigned this Period						
Strike Team / Task Force / Resource Designator		LWD	Leader	Number Persons	Drop Off PT./Time	Pick Up PT./Time
SOFR O-193		05/02	ROBERT BERTOLINA	1	ICP/0800	ICP/2000
EMPF O-220		05/03	CLARK WADE	1	ICP/0800	ICP/2000
EMTF O-256		05/07	JOHN MEYER	1	ICP/0800	ICP/2000
EMPF O-36		04/25	FRANK ABEL	1	ICP/0800	ICP/2000
6. Control Operations/Work Assignments:						
<p>Task:</p> <ul style="list-style-type: none"> • Patrol and mop up 25 ft. from control line. • Masticate Perocchi Grade to create alternate line. • Continue monitoring and using aerial support to contain slop overs on Nobles Grades. • Monitor Kissimmee Billy Strand using aerial support. • Continue to cold trail and extinguish hot spots on Kissimmee Billy Strand. <p>Purpose:</p> <ul style="list-style-type: none"> • To keep fire contained east of Kissimmee Billy Strand while minimizing fire fighter exposure. • To establish a contingency line and alternate line. <p>End State:</p> <ul style="list-style-type: none"> • Confine fire perimeter to reduce threats to resource values at risk. 						
7. Special Instructions:						
Coordinate with Field OPS in the event swing shift resources are required. Utilize MIST tactics as outlined in Fire Operations Guide for BICY. Follow tracked vehicle requirement restrictions.						
8. Division/Group Communication Summary						
Function	Channel	RX Frequency N/W	RX Tone/NAC	TX Frequency N/W	TX Tone/NAC	Mode
COMMAND	13	168.7000		170.9750	110.9	A
COMMAND	15	173.0375		167.3250	110.9	A
TACTICAL	5	168.2500		168.2500		A
AIR TO GROUND	10	168.3250		168.3250		A
9. Prepared By (Resource Unit Leader)			Approved By (Planning Section Chief)		Date	Time
SUE WILDER/STEVE WELLS			TERRY PIERCE/MICHAEL J WILLIAMS(T)		04/23/2017	0707

Division/Group Assignment List (ICS 204 WF)

1. Incident Name:			3.			
COWBELL			Branch:		Division/Group:	
2. Operational Period: DAY			INITIAL ATTACK			
Date/Time From: 04/24/2017 0800 MON		Date/Time To: 04/24/2017 2000 MON				
4. Operations Personnel						
OPERATIONS CHIEF		PAUL REYNOLDS		DEPUTY OPERATIONS CHIEF		DWIGHT SNOW JAY COLLETT (T)
PLANNING OPERATIONS		MICHAEL HEARD PAUL VARNEDOE (T)		AIR OPERATIONS BRANCH DIRECTOR		JOHN BRAGG MIKE MOWERY (T)
DIVISION / GROUP SUPERVISOR		KRIS WILSON AARON EDWARDS JR (T)				
5. Resources Assigned this Period						
Strike Team / Task Force / Resource Designator		LWD	Leader	Number Persons	Drop Off PT./Time	Pick Up PT./Time
TFLD O-60		04/26	HAROLD L KIBBE	1	ICP/0800	ICP/2000
HC2I CREW - T2IA - PR MA #3 C-7 MOD B		04/27	LOUIS SAEZ	10	ICP/0800	ICP/2000
ENG6 ENGINE - T6 - CO-PSF - 7-1 E-140		04/27	KYLE A AVESING	3	ICP/0800	ICP/2000
ENG6 ENGINE - T6 - WILDLANDS FIRE SERVICE INC - C93328 - 5 E-122		04/25	CHAD ANDERSON	3	ICP/0800	ICP/2000
BICY SUPPRESSION BUGGY #1 E-129		04/23	MATT HEINZ	1	ICP/0800	ICP/2000
SOFR O-54		04/26	KRIS CRODDY	1	ICP/0800	ICP/2000
EMTF O-197		05/01	CHRIS SANTOPIETRO	1	ICP/0800	ICP/2000
EMPF O-249		05/05	SHAWN CLARK	1	ICP/0800	ICP/2000
6. Control Operations/Work Assignments:						
Task:						
<ul style="list-style-type: none"> • Coordinate with BICY duty officer for notification of newly reported ignitions. Coordinate initial attack action with assigned aviation and /or ground assets • Determine IA resource pre-positioning needs across BICY and FPWR 						
Purpose:						
<ul style="list-style-type: none"> • Ensure communications with FL Hwy Patrol regarding smoke on I-75 and Hwy 41. Ensure timely response on any IA within BICY and FPWR 						
End State:						
<ul style="list-style-type: none"> • Protect human life. Minimize environment damage to protect habitat of threatened and endangered species. Minimize damage to public and private property 						
8. Division/Group Communication Summary						
Function	Channel	RX Frequency N/W	RX Tone/NAC	TX Frequency N/W	TX Tone/NAC	Mode
BICY RPTR	1	172.4250	1035	170.1000	1035	D
BICY RPTR	2	172.4250	1035	171.6250	1035	D
PANTHER RPTR	7	164.6250	1188	163.1500	1188	D
TACTICAL	9	166.8250		166.8250		A
AIR TO GROUND	6	169.1125		169.1125		A
9. Prepared By (Resource Unit Leader)			Approved By (Planning Section Chief)		Date	Time
SUE WILDER/STEVE WELLS			TERRY PIERCE/MICHAEL J WILLIAMS(T)		04/23/2017	0707

Division/Group Assignment List (ICS 204 WF)

1. Incident Name:			3.			
COWBELL			Branch:		Division/Group:	
2. Operational Period: DAY						
Date/Time From: 04/24/2017 0800 MON		Date/Time To: 04/24/2017 2000 MON		INITIAL ATTACK		
4. Operations Personnel						
OPERATIONS CHIEF		PAUL REYNOLDS		DEPUTY OPERATIONS CHIEF		DWIGHT SNOW JAY COLLETT (T)
PLANNING OPERATIONS		MICHAEL HEARD PAUL VARNEDOE (T)		AIR OPERATIONS BRANCH DIRECTOR		JOHN BRAGG MIKE MOWERY (T)
DIVISION / GROUP SUPERVISOR		KRIS WILSON AARON EDWARDS JR (T)				
7. Special Instructions:						
<ul style="list-style-type: none"> IA will be staged at Deep Lake Staging Area <p>Be prepared for extended staffing as needed. Coordinate with Field OPS to determine need. Follow tracked vehicle requirement restrictions. Establish and maintain LCES during operational period. Utilize MIST tactics as outlined in Fire Operations Guide for BICY. All initial attack will go through BICY Fire Dispatch Center. Incident within an Incident will go through Cowbell communications.</p>						
8. Division/Group Communication Summary						
Function	Channel	RX Frequency N/W	RX Tone/NAC	TX Frequency N/W	TX Tone/NAC	Mode
BICY RPTR	1	172.4250	1035	170.1000	1035	D
BICY RPTR	2	172.4250	1035	171.6250	1035	D
PANTHER RPTR	7	164.6250	1188	163.1500	1188	D
TACTICAL	9	166.8250		166.8250		A
AIR TO GROUND	6	169.1125		169.1125		A
9. Prepared By (Resource Unit Leader)			Approved By (Planning Section Chief)		Date	Time
SUE WILDER/STEVE WELLS			TERRY PIERCE/MICHAEL J WILLIAMS(T)		04/23/2017	0707

Division/Group Assignment List (ICS 204 WF)

1. Incident Name:			3.			
COWBELL			Branch:		Division/Group: K	
2. Operational Period: DAY						
Date/Time From: 04/24/2017 0800 MON		Date/Time To: 04/24/2017 2000 MON				
4. Operations Personnel						
OPERATIONS CHIEF		PAUL REYNOLDS		DEPUTY OPERATIONS CHIEF		DWIGHT SNOW JAY COLLETT (T)
PLANNING OPERATIONS CHIEF		MICHAEL HEARD PAUL VARNEDOE (T)		DIVISION/GROUP SUPERVISOR		TIM NUTLEY
AIR OPERATIONS BRANCH DIRECTOR		JOHN BRAGG MIKE MOWERY (T)				
5. Resources Assigned this Period						
Strike Team / Task Force / Resource Designator		LWD	Leader	Number Persons	Drop Off PT./Time	Pick Up PT./Time
UNSTAFFED						
6. Control Operations/Work Assignments:						
<p>Task:</p> <ul style="list-style-type: none"> • Coordinate with Florida Forestry Service representative for proposed line construction on private land. • Keep fire contained south of BICY boundary and private lands to minimize impacts. <p>Purpose:</p> <ul style="list-style-type: none"> • To protect structures on private lands. <p>End State:</p> <ul style="list-style-type: none"> • Confine fire perimeter to reduce impacts to private land ownership. 						
7. Special Instructions:						
<p>Establish and maintain LCES during operational period. Coordinate with Field OPS in the event swing shift resources are required. Follow tracked vehicle requirements restriction. Utilize MIST tactics as outlined in Fire Operations Guide for BICY.</p>						
8. Division/Group Communication Summary						
Function	Channel	RX Frequency N/W	RX Tone/NAC	TX Frequency N/W	TX Tone/NAC	Mode
COMMAND	12	166.6125		168.4000	110.9	A
COMMAND	13	168.7000		170.9750	110.9	A
TACTICAL	8	166.7500		166.7500		A
AIR TO GROUND	10	168.3250		168.3250		A
9. Prepared By (Resource Unit Leader)			Approved By (Planning Section Chief)		Date	Time
SUE WILDER/STEVE WELLS			TERRY PIERCE/MICHAEL J WILLIAMS		04/23/2017	0707

Division/Group Assignment List (ICS 204 WF)

1. Incident Name:			3.				
COWBELL			Branch:		Division/Group:		
2. Operational Period: DAY					MM 87 FIRE		
Date/Time From: 04/24/2017 0800 MON			Date/Time To: 04/24/2017 2000 MON				
4. Operations Personnel							
OPERATIONS CHIEF		PAUL REYNOLDS		DEPUTY OPERATIONS CHIEF		DWIGHT SNOW JAY COLLETT (T)	
PLANNING OPERATIONS		MICHAEL HEARD PAUL VARNEDOE (T)		AIR OPERATIONS BRANCH DIRECTOR		JOHN BRAGG MIKE MOWERY (T)	
DIVISION / GROUP SUPERVISOR		SHAWN NAGLE					
5. Resources Assigned this Period							
Strike Team / Task Force / Resource Designator		LWD	Leader		Number Persons	Drop Off PT./Time	Pick Up PT./Time
TFLD O-144		04/24	WILLARD R WORLEY		1	ICP/0800	ICP/2000
TFLD O-177		04/29	DAVID MOORE (T)		1	ICP/0800	ICP/2000
TFLD O-172		04/29	ALAN KIRBY		1	ICP/0800	ICP/2000
TFLD O-173		04/29	JARED NOBLES (T)		1	ICP/0800	ICP/2000
HC2I CREW - T2IA - PR MA #3 C-7 MOD A		04/27	ROBERTO MARTINEZ		10	ICP/0800	ICP/2000
ENG6 ENGINE - T6 - ATTACK-ONE FIRE MANAGEMENT SERVICES INC E-58		04/26	KEVIN CARTER		2	ICP/0800	ICP/2000
ENG6 ENGINE - T6 - CSP 661 E-59		05/04	CHRIS CORRIGAN		2	ICP/0800	ICP/2000
ENG6 ENGINE - T6 - 31 E-7		04/29	JONATHAN O'GORMAN		2	ICP/0800	ICP/2000
ENG6 ENGINE - T6 - 658 E-157		05/04	RUSS MARSHALL		3	ICP/0800	ICP/2000
ENG3 ENGINE - T3 - CA-SHF - 51 E-99		05/05	BRIAN BUCHNER		5	ICP/0800	ICP/2000
ENG6 ENGINE - T6 - FIRE TRAX LLC - B65014 - 610 E-86		04/26	CARLOS GUTIERREZ		3	ICP/0800	ICP/2000
ENG6 ENGINE - T6 - WILDLANDS FIRE SERVICE INC - A57267 - 8 E-87		05/03	BRIAN TERRY		3	ICP/0800	ICP/2000
DUECE BUGGY IA - 607 E-89		05/03	CONNER BOWDEN		3	ICP/0800	ICP/2000
BICY SWAMP BUGGY #5 E-64		05/06	UNSTAFFED		1	ICP/0800	ICP/2000
SLIMER SUPPRESION BUGGY E-80		04/28	JOSH MANLEY		4	ICP/0800	ICP/2000
8. Division/Group Communication Summary							
Function	Channel	RX Frequency N/W	RX Tone/NAC	TX Frequency N/W	TX Tone/NAC	Mode	
BICY RPTR	1	172.4250	1035	170.1000	1035	D	
BICY RPTR	2	172.4250	1035	171.6250	1035	D	
PANTHER RPTR	7	164.6250	1188	163.1500	1188	D	
TACTICAL	9	166.8250		166.8250		A	
AIR TO GROUND	6	169.1125		169.1125		A	
9. Prepared By (Resource Unit Leader)			Approved By (Planning Section Chief)		Date	Time	
SUE WILDER/ STEVE WELLS RESL			TERRY PIERCE/ MICHAEL J WILLIAMS(T)		04/23/2017	0707	

Division/Group Assignment List (ICS 204 WF)

1. Incident Name:			3.				
COWBELL			Branch:		Division/Group: MM 87 FIRE		
2. Operational Period: DAY							
Date/Time From: 04/24/2017 0800 MON		Date/Time To: 04/24/2017 2000 MON					
4. Operations Personnel							
OPERATIONS CHIEF		PAUL REYNOLDS		DEPUTY OPERATIONS CHIEF		DWIGHT SNOW JAY COLLETT (T)	
PLANNING OPERATIONS		MICHAEL HEARD PAUL VARNEDOE (T)		AIR OPERATIONS BRANCH DIRECTOR		JOHN BRAGG MIKE MOWERY (T)	
DIVISION / GROUP SUPERVISOR		SHAWN NAGLE					
5. Resources Assigned this Period							
Strike Team / Task Force / Resource Designator		LWD	Leader		Number Persons	Drop Off PT./Time	Pick Up PT./Time
SOFR O-135		04/25	DONALD FOCO		1	ICP/0800	ICP/2000
EMTF O-213		05/03	BRAD BURNS		1	ICP/0800	ICP/2000
EMPF O-198		05/01	ADAM WHITE		1	ICP/0800	ICP/2000
6. Control Operations/Work Assignments:							
Task:							
• Patrol and conduct mop up 25 feet from control line.							
Purpose:							
• To keep fire contained within the Panther Refuge boundary.							
End State:							
• Protect human life. Minimize environment damage to protect habitat of threatened and endangered species. Minimize damage to public and private property							
7. Special Instructions:							
Establish and maintain LCES during operational period. Coordinate with Field OPs in the event swing shift resources are required. Utilize MIST tactics as outlined in Fire Operations Guide for BICY.							
8. Division/Group Communication Summary							
Function	Channel	RX Frequency N/W	RX Tone/NAC	TX Frequency N/W	TX Tone/NAC	Mode	
BICY RPTR	1	172.4250	1035	170.1000	1035	D	
BICY RPTR	2	172.4250	1035	171.6250	1035	D	
PANTHER RPTR	7	164.6250	1188	163.1500	1188	D	
TACTICAL	9	166.8250		166.8250		A	
AIR TO GROUND	6	169.1125		169.1125		A	
9. Prepared By (Resource Unit Leader)			Approved By (Planning Section Chief)		Date	Time	
SUE WILDER/ STEVE WELLS RESL			TERRY PIERCE/ MICHAEL J WILLIAMS(T)		04/23/2017	0707	

Division/Group Assignment List (ICS 204 WF)

1. Incident Name:			3.			
COWBELL			Branch:		Division/Group: PARLIAMENT / MISC FIRE	
2. Operational Period: DAY						
Date/Time From: 04/24/2017 0800 MON		Date/Time To: 04/24/2017 2000 MON				
4. Operations Personnel						
OPERATIONS CHIEF		PAUL REYNOLDS		DEPUTY OPERATIONS CHIEF		DWIGHT SNOW JAY COLLETT (T)
PLANNING OPERATIONS		MICHAEL HEARD PAUL VARNEDOE (T)		AIR OPERATIONS BRANCH DIRECTOR		JOHN BRAGG MIKE MOWERY (T)
DIVISION / GROUP SUPERVISOR						
5. Resources Assigned this Period						
Strike Team / Task Force / Resource Designator		LWD	Leader	Number Persons	Drop Off PT./Time	Pick Up PT./Time
UNSTAFFED						
6. Control Operations/Work Assignments:						
<p>Task:</p> <ul style="list-style-type: none"> Patrol and monitor fires on BICY and FPWR with aviation and ground assets as directed by lead OSC commensurate with values at risk Monitor fires for further suppression management action <p>Purpose:</p> <ul style="list-style-type: none"> Assure suppression action taken limits environmental impact, consistent with MIST tactics <p>End State:</p> <ul style="list-style-type: none"> Protect human life Minimize damage to public and private property Minimize environmental damage to protect habitat of threatened and endangered species 						
7. Special Instructions:						
<p>Follow tracked vehicle requirement restrictions. Establish and maintain LCES during operational period. Utilize MIST tactics as outlined in Fire Operations Guide for BICY.</p>						
8. Division/Group Communication Summary						
Function	Channel	RX Frequency N/W	RX Tone/NAC	TX Frequency N/W	TX Tone/NAC	Mode
BICY RPTR	2	172.4250	1035	171.6250	1035	D
TACTICAL	11	166.7250	0659	166.7250	0659	D
AIR TO GROUND	10	168.3250		168.3250		A
9. Prepared By (Resource Unit Leader)			Approved By (Planning Section Chief)		Date	Time
SUE WILDER/STEVE WELLS			TERRY PIERCE/MICHAEL J WILLIAMS(T)		04/23/2017	0707

Division/Group Assignment List (ICS 204 WF)

1. Incident Name:			3.			
COWBELL			Branch:		Division/Group: STRUCTURE PROTECTION	
2. Operational Period: DAY						
Date/Time From: 04/24/2017 0800 MON		Date/Time To: 04/24/2017 2000 MON				
4. Operations Personnel						
OPERATIONS CHIEF		PAUL REYNOLDS		DEPUTY OPERATIONS CHIEF		DWIGHT SNOW JAY COLLETT (T)
PLANNING OPERATIONS		MICHAEL HEARD PAUL VARNEDOE (T)		AIR OPERATIONS BRANCH DIRECTOR		JOHN BRAGG MIKE MOWERY (T)
DIVISION/GROUP SUPERVISOR		JAY WALTER JT SOHR (T)				
5. Resources Assigned this Period						
Strike Team / Task Force / Resource Designator		LWD	Leader	Number Persons	Drop Off PT./Time	Pick Up PT./Time
6. Control Operations/Work Assignments:						
<p>Task:</p> <ul style="list-style-type: none"> Review structure protection plan. Assess structure protection needs west of the Plains Trail (alternate line) and west of the Perocchi-Bear Island Grade (Contingency line). <p>Purpose:</p> <ul style="list-style-type: none"> Structure preparation around Baker Cabin. <p>End State:</p> <ul style="list-style-type: none"> Protect human life. <p>Minimize damage to public and private property and infrastructure.</p>						
7. Special Instructions:						
Be prepared for extended staffing if needed. Coordinate with Field OPS to determine need. Follow tracked vehicle requirement restrictions. Establish and maintain LCES during operational period. Utilize MIST tactics as outlined in Fire Operations Guide for BICY.						
8. Division/Group Communication Summary						
Function	Channel	RX Frequency N/W	RX Tone/NAC	TX Frequency N/W	TX Tone/NAC	Mode
BICY RPTR	1	172.4250	1035	170.1000	1035	D
BICY RPTR	2	172.4250	1035	171.6250	1035	D
PANTHER RPTR	7	164.6250	1188	163.1500	1188	D
TACTICAL	9	166.8250		166.8250		A
AIR TO GROUND	6	169.1125		169.1125		A
9. Prepared By (Resource Unit Leader)			Approved By (Planning Section Chief)		Date	Time
SUE WILDER/STEVE WELLS			TERRY PIERCE/MICHAEL J WILLIAMS(T)		04/23/2017	0707

Division/Group Assignment List (ICS 204 WF)

1. Incident Name:			3.			
COWBELL			Branch:		Division/Group: Z	
2. Operational Period: DAY						
Date/Time From: 04/24/2017 0800 MON		Date/Time To: 04/24/2017 2000 MON				
4. Operations Personnel						
OPERATIONS CHIEF		PAUL REYNOLDS		DEPUTY OPERATIONS CHIEF		DWIGHT SNOW; JAY COLLETT (T)
PLANNING OPERATIONS		MICHAEL HEARD PAUL VARNEDOE (T)		AIR OPERATIONS BRANCH DIRECTOR		JOHN BRAGG MIKE MOWERY (T)
DIVISION / GROUP SUPERVISOR		MICAH JOHNSON CHRIS RICHARDS (T)				
5. Resources Assigned this Period						
Strike Team / Task Force / Resource Designator		LWD	Leader	Number Persons	Drop Off PT./Time	Pick Up PT./Time
TFLD JAMES R WETTSTAED O-221		05/04	JAMES WETTSTAED	1	ICP/0800	ICP/2000
ENG6 ENGINE - T6 - WILDLANDS FIRE SERVICE INC - C52720 - 3 E-158		05/04	SAUL IRVIN	2	ICP/0800	ICP/2000
SEMINOLE SUPPRESSION BUGGY E-60		04/30	MIKE LIGHTSEY	2	ICP/0800	ICP/2000
SEMINOLE SUPPRESSION BUGGY E-139		04/28	JUSTIN WEDO	1	ICP/0800	ICP/2000
TRANSPORT BUGGY E-38		04/25	CLINT WEEKS	1	ICP/0800	ICP/2000
TRANSPORT BUGGY E-39		04/24	CAPTAIN STEVE-CLINTON WEAKS	1	ICP/0800	ICP/2000
TRANSPORT BUGGY E-40		04/24	BOBBY WEEKS	1	ICP/0800	ICP/2000
TRANSPORT BUGGY E-41		04/26	VICTOR ROBINSON	1	ICP/0800	ICP/2000
SOFR O-194		05/02	MARK HELM	1	ICP/0800	ICP/2000
SOFR (T) O-76		04/26	JUSTIN PHIPPEN	1	ICP/0800	ICP/2000
EMPF O-199		05/01	TOM CHRISTIAN	1	ICP/0800	ICP/2000
EMTF O-196		05/01	BRANDON LITTLE	1	ICP/0800	ICP/2000
6. Control Operations/Work Assignments:						
Task:						
• Patrol and conduct mop up 25 ft. from control line						
Purpose:						
• To keep fire south of Preserve Boundary and west of ADD 17 to protect private land with structures						
End State:						
• Control fire to eliminate threats to Seminole Tribe of Florida and private property						
8. Division/Group Communication Summary						
Function	Channel	RX Frequency N/W	RX Tone/NAC	TX Frequency N/W	TX Tone/NAC	Mode
COMMAND	12	166.6125		168.4000	110.9	A
COMMAND	13	168.7000		170.9750	110.9	A
TACTICAL	8	166.7500		166.7500		A
AIR TO GROUND	10	168.3250		168.3250		A
9. Prepared By (Resource Unit Leader)			Approved By (Planning Section Chief)		Date	Time
SUE WILDER/STEVE WELLS			TERRY PIERCE/MICHAEL J WILLIAMS(T)		04/23/2017	0707

Division/Group Assignment List (ICS 204 WF)

1. Incident Name:			3.			
COWBELL			Branch:		Division/Group: Z	
2. Operational Period: DAY						
Date/Time From: 04/24/2017 0800 MON		Date/Time To: 04/24/2017 2000 MON				
4. Operations Personnel						
OPERATIONS CHIEF		PAUL REYNOLDS		DEPUTY OPERATIONS CHIEF		DWIGHT SNOW; JAY COLLETT (T)
PLANNING OPERATIONS		MICHAEL HEARD PAUL VARNEDO (T)		AIR OPERATIONS BRANCH DIRECTOR		JOHN BRAGG MIKE MOWERY (T)
DIVISION / GROUP SUPERVISOR		MICAH JOHNSON CHRIS RICHARDS (T)				
7. Special Instructions:						
Establish and maintain LCES during operational period. Coordinate with Field OPS in the event swing shift resources are required. Follow tracked vehicle requirements restriction. Utilize MIST tactics as outlined in Fire Operations Guide for BICY.						
8. Division/Group Communication Summary						
Function	Channel	RX Frequency N/W	RX Tone/NAC	TX Frequency N/W	TX Tone/NAC	Mode
COMMAND	12	166.6125		168.4000	110.9	A
COMMAND	13	168.7000		170.9750	110.9	A
TACTICAL	8	166.7500		166.7500		A
AIR TO GROUND	10	168.3250		168.3250		A
9. Prepared By (Resource Unit Leader)			Approved By (Planning Section Chief)		Date	Time
SUE WILDER/STEVE WELLS			TERRY PIERCE/MICHAEL J WILLIAMS(T)		04/23/2017	0707

AIR OPERATIONS SUMMARY

OPERATIONAL PERIOD DATE: 04-24-2017

0800-2000

1. INCIDENT NAME: Cowbell	2. PREPARED BY: John Bragg PREPARED DATE/TIME: 04/23/2017 1800	3. Sunrise: 0655 Sunset: 1953
4. REMARKS (Safety Notes, Hazards, Air Operations Special Equipment., etc.): Medivac Aircraft: 6HX MTR- Located along state road 29. Fire Dispatch gets MTR activity every morning Do not over fly structures with external load missions. All aircraft should use strobes and running lights in smoky conditions. Hazards: Snags, non-incident aircraft, and winds. Contract helicopter working special use permit in North Central portion of BICY. Area identified on pilot briefing board. ATGS has air to air communications. Cease all operations at sunset		5. Squawk 1255 (A-20) TFR—7/7786 ZMA FL, Airspace 25 nm NE of Ochopee SFC 3000ft. Contact 118.825 NOTAM – 04/054 – Airspace firefighting aircraft 5nm of (9FL7) SFC 2000ft.

6. PERSONNEL	Phone	7. FREQUENCIES	AM	FM	8. FIXED WING	FAA#/Base
AOBD: John Bragg AOBD-T Mike Mowery ASGS: Matt Clinton	423-483-2798 870-615-0287 208-634-9414	Air/Air Rotor (A-5)	123.575		Air Attack- Air Attack	197GB (A-18)–Aero Commander MKY 4566M (A-10) --Baron MKY
ATGS: Steve Little ATGS: Jay Lindgren ATGS (T): Trevor Pollock	828-778-2077 406-461-1652 435-592-4919	Air/Air Fixed Wing (A-6)	118.825			
		Air/Ground Cowbell		168.3250 RX/TX (A)		
		Air/Ground IA		169.1125 RX/TX (A)		
		Air/Ground (A-11)		167.9500 RX/TX (A)		
<u>Oasis Helibase (9FL7)</u> HEB1 Mark Oetzmann HEB1(T) Jay Thatcher	239-695-0278 208-315-5030 970-903-7922	Flight Following (BICY)		169.7250 RX N1514 163.3875 TX N1738		
<u>Immokalee Airport</u> HMGB—Tracy Elliott HMGB – Brian Butler	303-910-7619 970-946-8068					
Big Cypress Fire Dispatch	239-695-9280 x 104	Air/Guard		168.6250 RX/TX Tone 110.9		
		Deck		166.7750		

9. HELICOPTERS (Use Additional Sheets As Necessary)

FAA N# or Designator	TY	MAKE/MODEL	BASE	START	REMARKS	FAA N# or Designator	TY	MAKE/MODEL	BASE	START	REMARKS
28HX (A-17)	2	Bell 205	Oasis	0900	Crew/Bucket	1KA (A-7)	1	K-MAX	Oasis	0900	Bucket
16HX (A-9)	2	Bell 205	Oasis	0900	Crew/Bucket	612CK (A-8)	1	S-61	IMM	0900	Tanked
3HP	3	Bell 407	Oasis	0800	Map/Recon	718 (A-16)	1	CH-54	IMM	0900	Tanked

TYPE/FUNCTION	NAME OF PERSONNEL OR CARGO (if applicable) OR INSTRUCTIONS FOR TACTICAL AIRCRAFT	MISSION START	FLY FROM	FLY TO
Mapping/Reconnaissance	As Requested	0930		
Water Drops	As Requested	0930		

INCIDENT RADIO COMMUNICATIONS PLAN (ICS 205)

3. Operational Period: DAY									
Date/Time From: 04/24/2017 0800			Date/Time To: 04/24/2017 2000						
Zone Group	Ch #	Function	Assignment	RX Freq	RX Tone/NAC	TX Freq	TX Tone/NAC	Mode (A,D, or M)	Remarks
	1	CARNS RPT	Initial Attack	172.4250	1035	170.1000	1035	D	Preserve RPTR
	2	OASIS RPT	Initial Attack	172.4250	1035	171.6250	1035	D	Preserve RPTR
	3	BCY LCL	Structure/Div S	166.7750	No Tone	166.7750	No Tone	A	
	4	BICY TAC 1	Division A /D	168.6000	No Tone	168.6000	No Tone	A	
	5	BICY LCL 2	DIVISION G	168.2500	No Tone	168.2500	No Tone	A	
	6	A/G 59	Initial Attack	169.1125	No Tone	169.1125	No Tone	A	
	7	Panther RPT	Initial Attack Parliament	164.6250	1188	163.1500	1188	D	Panther Refuge RPTR
	8	PANTHER TAC 1	DIVISION Z/K	166.7500	No Tone	166.7500	No Tone	A	
	9	PANTHER TAC 2	Initial Attack	166.8250	No Tone	166.8250	No Tone	A	
	10	A/G 85	ALL DIVISIONS	168.3250	No Tone	168.3250	No Tone	A	
	11	Everglades TAC 1	Parliament Misc.	166.7250	0659	166.7250	0659	D	
	12	CMD 12	DIVISION A/Z	166.6125	No Tone	168.4000	110.9	A	Command RPTR-Linked
	13	CMD 13	DIVISION D/G/Z	168.7000	No Tone	170.9750	110.9	A	Command RPTR-Linked
	14	A/G	Aerial Ignition	167.9500	No Tone	167.9500	No Tone	A	
	15	CMD 15	DIV G	173.0375	No Tone	167.3250	110.9	A	Command RPTR-Linked
	16	AIR GUARD		168.6250	No Tone	168.6250	110.9	A	
Name: MARK SPANN				Signature: /s/ Mark Spann					
				Date/Time: 04/23/2017 1600					

STATE IA RADIO COMMUNICATIONS PLAN (ICS 205)

3. Operational Period: DAY									
Date/Time From: 04/24/2017 0800			Date/Time To: 04/24/2017 2000						
Zone Group	Ch #	Function	Assignment	RX Freq	RX Tone/NAC	TX Freq	TX Tone/NAC	Mode (A,D, or M)	Remarks
	1	CARNS RPT	Initial Attack	172.4250	1035	170.1000	1035	D	BICY Preserve RPTR
	2	OASIS RPT	Initial Attack	172.4250	1035	171.6250	1035	D	BICY Preserve RPTR
	3	BCY LCL	Structure/Div S	166.7750	No Tone	166.7750	No Tone	A	
	4	A/G PRI	STATE IA	170.4750	No Tone	170.4750	No Tone	A	
	5	A/G SEC	STATE IA	168.6750	No Tone	168.6750	No Tone	A	
	6	A/G 59	Initial Attack	169.1125	No Tone	169.1125	No Tone	A	
	7	Panther RPT	Initial Attack Parliament	164.6250	1188	163.1500	1188	D	Panther Refuge RPTR
	8	PANTHER TAC 1	DIVISION Z/K	166.7500	No Tone	166.7500	No Tone	A	
	9	PANTHER TAC 2	Initial Attack	166.8250	No Tone	166.8250	No Tone	A	
	10	A/G 85	ALL DIVISIONS	168.3250	No Tone	168.3250	No Tone	A	
	11	Everglades TAC 1	Parliament Misc.	166.7250	0659	166.7250	0659	D	
	12	RED V22	STATE IA	154.2650	No Tone	154.2650	156.7	A	
	13	WHITE V21	STATE IA	154.2800	No Tone	154.2800	156.7	A	
	14	BLUE V23	STATE IA	154.2950	No Tone	154.2950	156.7	A	
	15	CMD 15	DIV G	173.0375	No Tone	167.3250	110.9	A	Command RPTR-Linked
	16	AIR GUARD		168.6250	No Tone	168.6250	110.9	A	
Name: MARK SPANN				Signature: /s/ Mark Spann					
				Date/Time: 04/23/2017 1600					

MEDICAL PLAN (ICS 206)

1. Incident Name: Cowbell Fire		2. Operational Period: Date From: 04-24-17 Date To: 04-24-17 Time From: 0800 Time To: 2000					
3. Medical Aid Stations:							
Name	Location	Contact Number(s)/Frequency	Paramedics on Site?				
Shanna Ellis (MEDL)/Matt Moran (T)	Medical ICP	318-229-6515/907-887-1539	<input type="checkbox"/> Yes	<input checked="" type="checkbox"/> No			
Tom Christian (EMPF)/Brandon Little (EMTF)	Division Z	727-389-2481/815-575-1563	<input checked="" type="checkbox"/> Yes	<input type="checkbox"/> No			
Chris Santopietro (EMTF)/Shawn Clark (EMPF)	Division IA	303-913-4149/918-770-5029	<input checked="" type="checkbox"/> Yes	<input type="checkbox"/> No			
Cody Gilmore (EMPF)/Lionel Van Gorp (EMPF)	Division A/D	918-703-9103/928-235-7059	<input checked="" type="checkbox"/> Yes	<input type="checkbox"/> No			
John Meyer (EMTF)/Clark Wade (EMPF)/Frank Abel (EMPF)	Division G	505-660-3324/804-387-6188/423-595-1578	<input checked="" type="checkbox"/> Yes	<input type="checkbox"/> No			
Brad Burns (EMTF)/Adam White (EMPF)	Division MM87	479-427-1095/910-391-9053	<input checked="" type="checkbox"/> Yes	<input type="checkbox"/> No			
4. Transportation (indicate air or ground):							
Ambulance Service	Location	Number(s)/Frequency	Level of Service				
Collier County EMS (ground)	Everglades City (Medic 61)	911	<input checked="" type="checkbox"/> ALS	<input type="checkbox"/> BLS			
Collier County Med-Flight (air)	Naples Airport	911	<input checked="" type="checkbox"/> ALS	<input type="checkbox"/> BLS			
6HX Bell 205 (air) medical evacuation	Oasis Heli-base	168.3250 (A/G 85)	<input type="checkbox"/> ALS	<input checked="" type="checkbox"/> BLS			
Miami Dade Fire Rescue air hoist	Miami	911	<input type="checkbox"/> ALS	<input checked="" type="checkbox"/> BLS			
5. Hospitals:							
Hospital Name	Address	Contact Number(s)	Travel Time		Trauma Center	Burn Center	Helipad
			Air	Ground			
Physicians Regional Collier Blvd	8300 Collier Blvd. Naples, FL 34114 Lat:26°6.313'/Long: -81°41.106'	239-354-6000 (Main) 239-354-6190 (ER)	15	50	<input type="checkbox"/> Yes Level: _____	<input type="checkbox"/> Yes <input checked="" type="checkbox"/> No	<input checked="" type="checkbox"/> Yes <input type="checkbox"/> No
Physicians Regional Pine Ridge	6101 Pine Ridge Road, Naples 34119 Lat:26°12.833'/Long: -81°43.954'	239-348-4000 (Main) 239-304-4748 (ER)	15	50	<input type="checkbox"/> Yes Level: _____	<input type="checkbox"/> Yes <input checked="" type="checkbox"/> No	<input checked="" type="checkbox"/> Yes <input type="checkbox"/> No
Naples Community Hospital	350 7 th Street North, Naples 34102 Lat:26°9.046'/Long: -81°47.907'	239-513-7709 (Main) 239-436-5151 (ER)	15	60	<input checked="" type="checkbox"/> Yes Level: <u>2</u>	<input type="checkbox"/> Yes <input checked="" type="checkbox"/> No	<input checked="" type="checkbox"/> Yes <input type="checkbox"/> No
Jackson Memorial Hospital	1611 NW 12 Avenue, Miami Lat:25°47.508'/Long: -80°12.756'	305-585-1111 (Main) 305-585-6910 (ER)	20	60	<input checked="" type="checkbox"/> Yes Level: <u>1</u>	<input checked="" type="checkbox"/> Yes <input type="checkbox"/> No	<input checked="" type="checkbox"/> Yes <input type="checkbox"/> No
Kendal Regional Medical Center	11750 SW 40 th St., Miami 33175 Lat:25°43.916'/Long: -80°23.148'	305-223-3000 (Main) 305-227-5544 (ER)	20	50	<input checked="" type="checkbox"/> Yes Level: <u>1</u>	<input type="checkbox"/> Yes <input checked="" type="checkbox"/> No	<input checked="" type="checkbox"/> Yes <input type="checkbox"/> No
6. Special Medical Emergency Procedures:							
Once any injury/illness has occurred:							
<ul style="list-style-type: none"> • Report all injuries/illnesses to Division Supervisors (or designees) who will assume command and notify any assigned DIVS Medical Personnel and DIVS Safety Officer. • DIVS will notify ICP Communications. <u>DO NOT USE THE INJURED PERSON'S NAME ON THE RADIO.</u> • ICP Communications will notify MEDL and Incident Safety Officer to assist with the coordination of further medical care and mode of transportation. • Any on-Scene medical personnel will stabilize patient. • Ambulance and/or air resources will be coordinated through ICP Communications, MEDL, and SOFI. 							
ICP: Contact Medical Unit with patient complaint/condition and location.							
<ul style="list-style-type: none"> • ASSIGNED MEDICAL PERSONNEL - CHECK IN WITH COMMUNICATIONS ON ARRIVAL TO LINE AND WHEN MOVED BY DIVS OR SAFETY. SPECIFY IF STAGING IN PLACE OR ROVING SECTIONS. • Request that FFTR/Engine Crews or Single Resources let DIVS know if they have any EMTs or Paramedics and if they have equipment with them. 							
7. Prepared by (MEDL): Matthew Moran (T)/ Shanna Ellis Signature: <i>/s/ Matthew Moran Shanna F. Ellis</i>							
8. Approved by (SOF1): Brian Beisel Signature: <i>/s/ Brian Beisel</i>							
ICS 206		IAP Page _____		Date/Time: <u>04/23/2017</u>			



TRAINING MESSAGE



TRAINEES: IF YOU ARE WORKING ON A POSITION TASKBOOK AND HAVE NOT CHECKED IN WITH THE TRAINING SECTION, PLEASE DO SO AS SOON AS POSSIBLE. IF YOU ARE SCHEDULED TO DEMOB PLEASE ALLOW TIME TO COMPLETE TRAINEE PAPERWORK AND TO CLOSE OUT WITH TRAINING SECTION.

ITEMS TO BRING TO TRAINING SECTION: **Initial Check in-** Position Taskbook, Qualification Card (Red card) and Evaluator information.

ITEMS TO BRING TO TRAINING SECTION: **Closeout-** Taskbook with completed Evaluator page, completed ICS 225 (Performance Evaluation) and completed Exit Interview (signed by Trainee/Evaluator)

PLEASE NOTE: IF YOUR TRAINER/EVALUATOR IS DEMOBING AND/OR CHANGES, PLEASE COMPLETE THE ICS 225 AND PTB EVALUATOR PAGE. PLEASE REPORT TO THE TRAINING SECTION TO UPDATE NEW TRAINER/EVALUATOR INFORMATION.

TRAINING SECTION IS LOCATED IN TRAILER WITH PLANS, GISS AND ITSS.

MARY LEATHERS, TRAINING SPECIALIST 979-218-3030

TONY WHITE, TRAINING SPECIALIST 803-238-5747

"Never underestimate your power to change yourself; never overestimate your power to change others."

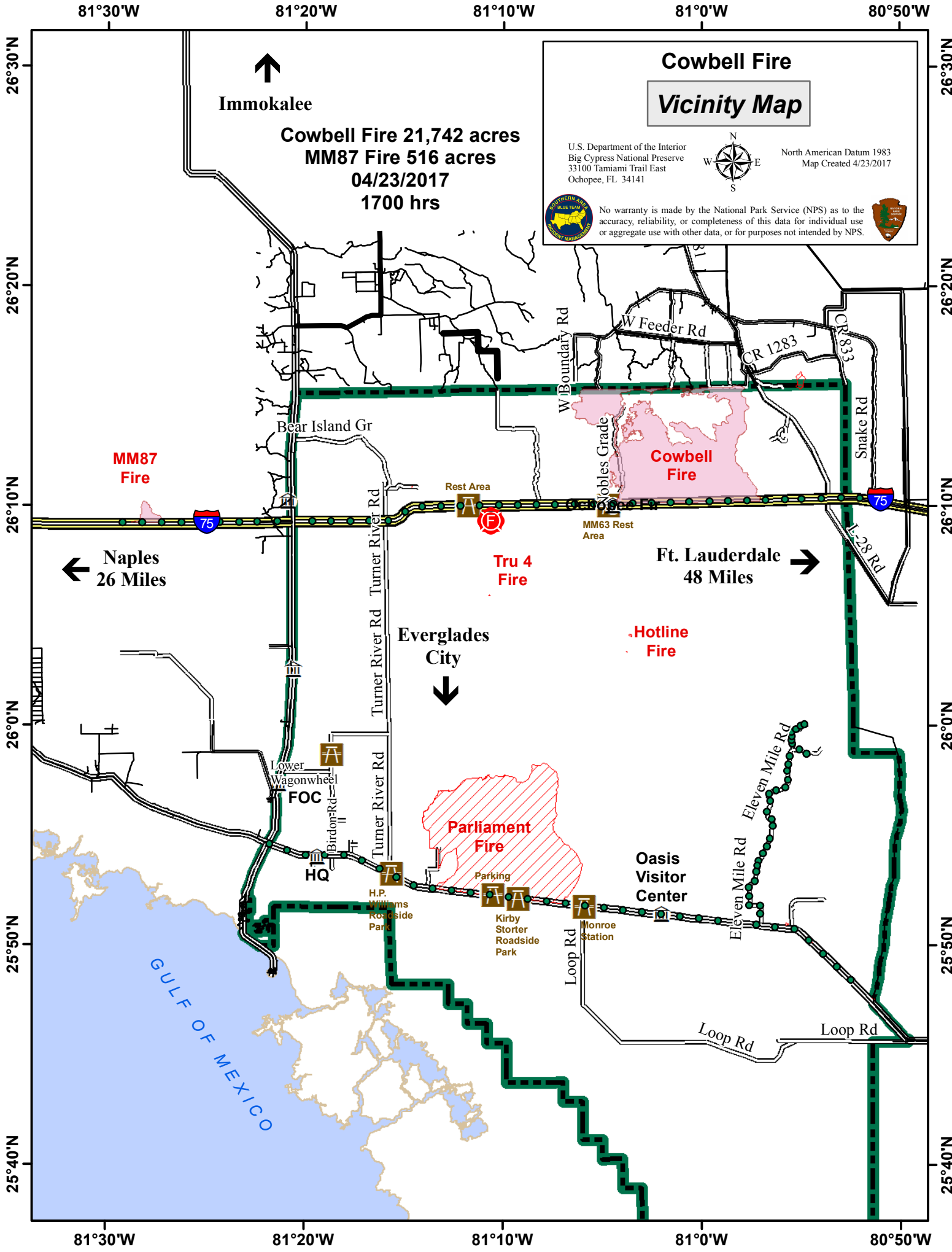
H. Jackson Brown, Jr

Tentative DMOB 4/25 to 4/27

DEMOB	REQ #	RESOURCE NAME	KIND	UNIT ID	TRV	JETPT
04/25/2017	E-39	CAPTAIN STEVE'S SWAMP BUGGY AD.	ATV	FL-BCP	OTH	
04/25/2017	E-40	CAPTAIN STEVE'S SWAMP BUGGY AD.	ATV	FL-BCP	OTH	
04/25/2017	E-65	ATV - FIRE - SWAMP BUGGY 3	ATV	FL-BCP		
04/25/2017	O-1	NEWLAND, STEVEN M	HECM	FL-EVP	POV	
04/25/2017	O-2	CARNALL, ROBERT	HMGB	FL-EVP	POV	
04/25/2017	O-3	GILL, ANDREW P	HMGB	FL-EVP	POV	
04/25/2017	O-4	DECK, BRIAN	HMGB	AK-AKD	AOV	FAI
04/25/2017	O-29	BENZILIO, JACK	SEMG	CO-SJF	A/R	DRO
04/25/2017	O-127	CZERNIK, HELEN	INBA	DC-	A/R	ORF
04/25/2017	O-128	MCHAN, JASON	EQPM	NC-SRS	AOV	
04/25/2017	O-144	WORLEY, WILLARD R	TFLD	KY-DBF	A/R	LEX
04/25/2017	O-190.18	HICKERSON, HENRY B	DMOB	VA-VAF	AIR	ROA
04/25/2017	O-214	SELLERS, MICHAEL S	SEMG	AR-ARS	AIR	LIT
04/25/2017	O-248	GOODSON, BILLY JOE	SEMG	AL-ALF	A/R	MGM
04/25/2017	O-1002	GOODWIN, FRED	PILO	FL-BCP		
04/26/2017	E-38	CAPTAIN STEVE'S SWAMP BUGGY AD.	ATV	FL-BCP	OTH	
04/26/2017	E-121	ENGINE - T6 - WILDLANDS FIRE SERVICE INC - 339712 - 9	ENG6	GA-R08	OTH	
04/26/2017	E-122	ENGINE - T6 - WILDLANDS FIRE SERVICE INC - C93328 - 5	ENG6	GA-R08	OTH	
04/26/2017	O-36	ABEL, FRANK	EMPF	TN-CNF	POV	
04/26/2017	O-57	HERRING, SHANNON SAMUEL	COMT	AL-ALF	AOV	
04/26/2017	O-122	MCDERMOTT, PETER	HECM	KY-CGP	AIR	TYS
04/26/2017	O-135	FOCO JR, DONALD HOWARD	SOFR	MI-HMF	A/R	TVC
04/26/2017	O-142	KELLY, CHRISTOPHER T	SEC1	MA-EMR	A/R	BOS
04/26/2017	O-148	JOHNSON, MICAH DARRELL	DIVS	WA-OLF	A/R	SEA
04/26/2017	O-154	YOUNG, JOANNE	READ	NM-AZP	A/R	CEZ
04/27/2017	E-41	CAPTAIN STEVE'S SWAMP BUGGY AD.	ATV	FL-BCP	OTH	
04/27/2017	E-58	ENGINE - T6 - ATTACK-ONE FIRE MANAGEMENT SERVICES INC	ENG6	GA-R08	OTH	
04/27/2017	E-86	ENGINE - T6 - FIRE TRAX LLC - B65014 - 610	ENG6	GA-R08	OTH	
04/27/2017	O-54	CRODDY, KRIS	SOFR	AZ-CNF	A/R	TUS
04/27/2017	O-60	KIBBE, HAROLD L	TFLD	MI-HMF	A/R	TVC
04/27/2017	O-76	PHIPPEN, JUSTIN	ENGB	FL-BCP	POV	
04/27/2017	O-80	ROOF, MIKE	HEB2	FL-BCP	AOV	
04/27/2017	O-121	BANNON, BAIN	SEC1	LA-KIF	AOV	
04/27/2017	O-143	GARNER, STANLEY	SEC1	FL-CHR	AOV	
04/27/2017	O-176	SALEMI, TERRI B	THSP	GA-CHF	A/R	ATL
04/28/2017	E-140	ENGINE - T6 - CO-PSF - 7-1	ENG6	KS-PSF	AOV	
04/28/2017	O-83	GIRARDI, ASHLEE	HECM	FL-BCP	POV	RSW
04/28/2017	O-162	RUMBACK, DONALD A	BCMG	KS-KSS	AIR	ICT
04/28/2017	O-190.19	SMITH, LAWRENCE ALLEN	GISS	TX-TXS	A/R	SHV
04/29/2017	O-158	BUTLER, BRIAN KARYL	HMGB	MT-HLF	A/R	HLN
04/29/2017	O-159	IPPOLITI JR, STEVEN LEWIS	IMET	TX-	POV	
04/29/2017	O-167	MANLEY, JOSHUA D	THSP	PA-DWP	A/R	PHL
04/29/2017	O-168	SOHR, JACOB T	THSP	CA-MNP	A/R	ONT
04/29/2017	O-240	WEDO, JUSTIN MICHAEL	ENGB	AZ-PMA	AOV	
04/29/2017	O-241	BUSSING, COLEMAN B	FFT2	AZ-PMA	AOV	



COWBELL FIRE ICP



Cowbell Fire Vicinity Map

U.S. Department of the Interior
Big Cypress National Preserve
33100 Tamiami Trail East
Ochopee, FL 34141

North American Datum 1983
Map Created 4/23/2017



No warranty is made by the National Park Service (NPS) as to the accuracy, reliability, or completeness of this data for individual use or aggregate use with other data, or for purposes not intended by NPS.



Immokalee

Cowbell Fire 21,742 acres
MM87 Fire 516 acres
04/23/2017
1700 hrs

MM87 Fire

Cowbell Fire

Tru 4 Fire

Ft. Lauderdale 48 Miles

Hotline Fire

Everglades City

Parliament Fire

Oasis Visitor Center

Naples 26 Miles

GULF OF MEXICO

81°30'W

81°20'W

81°10'W

81°0'W

80°50'W

26°30'N

26°20'N

26°10'N

26°0'N

25°50'N

25°40'N

26°30'N

26°20'N

26°10'N

26°0'N

25°50'N

25°40'N

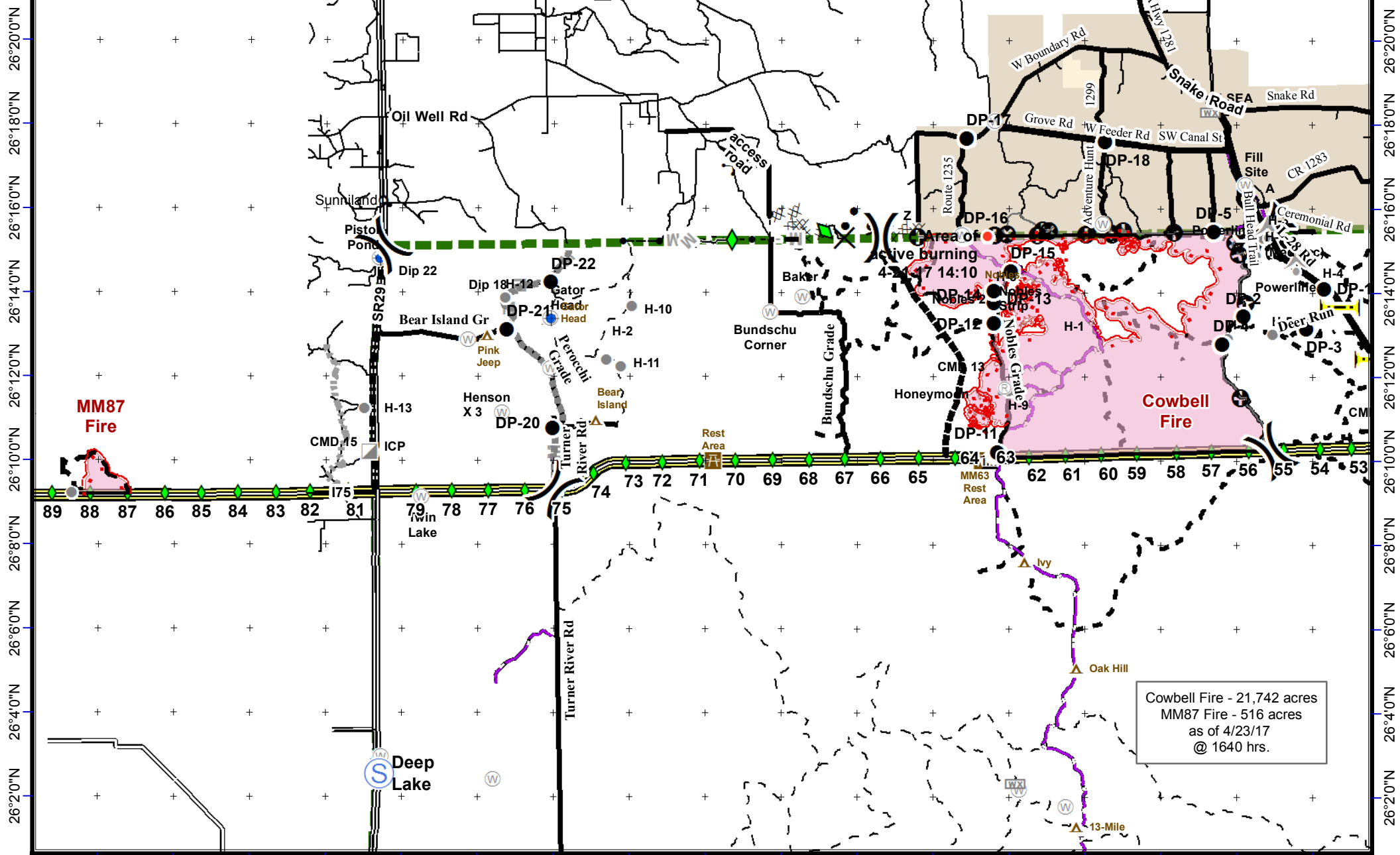
81°30'W

81°20'W

81°10'W

81°0'W

80°50'W



Cowbell Fire - 21,742 acres
 MM87 Fire - 516 acres
 as of 4/23/17
 @ 1640 hrs.

Cowbell Fire
 FL-BCP-017033
IAP Map
 April 24, 2017
 Day Shift



- Uncontrolled Fire Edge
- Completed Line
- M - M** Mastication Line
- Completed Disk Line
- Proposed Line
- Rain Gauge
- Drop Point
- Helispot
- Division
- WX Mobile Weather
- Incident Command Post
- R Repeater
- ▲ Aerial Hazard
- Private Structures
- NPS Property
- H Helibase
- I Bridge Locations
- I-75
- Improved Road
- Primary Buggy Trail

NAD 83 UTM 1;
 0 0.5 1 2 3 4
 Mil

PHONE LIST - COWBELL FIRE as of 4/23/2017

Position	Name	Phone Number	Position	Name	Phone Number
COMMAND			OPERATIONS		
Incident Commander	Mike Wilkins	828-421-5026	Ops Section Chief	Paul Reynolds	662-418-9743
Deputy Incident Commander	Mark Morales	479-264-7991	Ops Section Chief Deputy	Dwight Snow	352-516-4969
Liaison Officer	Andy Gaston	706-508-2363	Ops Section Chief Deputy (T)	Jay Collett	540-292-1-038
Liaison Officer (T)	Jeff Owenby	828-388-0401	Planning Ops	Michael Heard	334-488-5966
Public Information	Terry Krasko	479-280-0452	Planning Ops (T)	Paul Varnedoe	904-271-1138
Public Information (T)	Michael R Williams	470-599-3926	Division A/D	Kerry Clark	205-272-2424
Safety Officer	Brian Beisel	270-978-1610	Division G	Vic Doig	352-493-3155
Safety Officer	Ivan Cupp	405-990-7155	Division K	Tim Nutley	479-227-0893
			Division Initial Attack	Chris Wilson	918-314-7264
			Mile Marker 87 Fire	Shawn Nagle	662-231-4024
PLANNING			Divison Z	Micah Johnson	360-301-4728
Chief	Terry Pierce	423-596-2694	Structure Protection	Jay Walter	623-696-8532
Chief (T)	Michael J Williams	828-835-0094			
Situation Unit Leader	Scott Hamlet	918-448-3111			
Resource Unit Leader	Sue Wilder	985-264-2288	AIR OPERATIONS		
Resource Unit Leader	Steve Wells	803-603-0502	Air Ops Branch Director	John Bragg	423-483-2798
Technology Support T)	Scott Bishaw	239-595-9143	Air Ops Branch Director (T)	Mike Mowery	870-214-0034
Fire Behavior Analyst	Glenn Fortenberry	501-762-3751	Air Tactical Group Supervisor	Steve Little	828-778-2077
Air Resource Advisor	Trent Wickam	218-341-8646	Air Support Group Supervisor	Matt Clinton	208-634-9414
READ	JoAnne Young	970-422-2246	Oasis Helibase Manager	Mark Oetzmam	208-315-5030
IMET	Steven Ippoliti	954-826-9405			
GISS	Alan Smith	903-261-3294	LOGISTICS		
GISS	Katy McCurdy	404-210-3996	Chief	Cindy Schiffer	540-230-1269
Demob	Henry Hickerson	540-798-2218	Chief	Bill Lisowsky	270-816-7417
Training Specialist (T)	Mary Leathers	979-218-3030	Chief (T)	Terry Holsclaw	435-201-4443
Training Specialist	Tony White	803-238-5747	Ground Support Unit Leader	Joe Emberson	580-317-5315
Technology Support	Dan Leduc	318-613-0362	Ground Support Unit Leader	Randy Chapin	601-405-5711
Technology Support	Scott Grest	770-595-1521	Ordering Manager	Sandy Rhodes	501-282-0085
Technology Support T)	Scott Bishaw	239-595-9143	Ordering Manager	Natalie Broce	540-968-3734
Status Checkin	Teresa Moss	828-361-5301	Supply Unit Leader	Bill Kitchings	601-741-2296
Status CheckIn	Allison Cochran	256-566-5509	Facilities	Steve Frick	218-821-6271
			Facilities (T)	Jamie Jones	864-933-4165
			Communications	Mark Spann	936-208-0488
FINANCE			Comms Trailer		772-631-2573
Chief	Randee Olson	218-370-0561	Medical Unit Leader	Shanna Ellis	318-229-6515
Apprentice	Mike Morris	337-718-2153	Security Manger	David Clark	573-714-5142
Time Unit Leader	Sandra Fix	540-460-2509	Medical Unit Leader (T)	Matt Moran	907-887-1539
Time Unit Leader (T)	Kelly Donaldson	580-236-9339	Security	Chris Kelly	978-580-9245
Time Unit Leader (T)	Petra Setlich	423-4322840	Security	Bain Bannon	318-446-1759
Cost Unit Leader	Susan Deimel	501-337-3598	Security	Sam Maldonado	909-522-6905
Cost Unit Leader (T)	Julie Chisholm	979-248-2265	Security	Stanley Garner	352-672-1036
Comp/Claims	Donna Rogers	803-295-3033	Security	Danny Moss	228-238-6327
Procurement	Leslie Solberg	360-553-9830	Security		
			Big Cypress National Preserve	Duty Officer	239-719-0241

Medical Incident Report- "9 Line"

FOR ALL MEDICAL EMERGENCIES: IDENTIFY ON SCENE INCIDENT COMMANDER BY NAME AND POSITION AND ANNOUNCE "MEDICAL EMERGENCY" TO INITIATE RESPONSE FROM IMT COMMUNICATIONS/DISPATCH.

Use items one through nine to communicate situation to communications/dispatch.

1. CONTACT COMMUNICATIONS-

Ex: "Cowbell Communications, Div. Alpha. Stand-by for Priority Medical Incident Report." (If life threatening request designated frequency be cleared for emergency traffic.)

2. INCIDENT STATUS: Provide incident summary and command structure.

Nature of Injury/Illness		Describe the injury (Ex: Broken leg with bleeding)
Incident Name		Geographic Name + "Medical" (Ex: Trout Meadow Medical)
Incident Commander		Name of IC
Patient Care		Name of Care Provider (Ex: EMT Smith)

3. INITIAL PATIENT ASSESSMENT: Complete this section for each patient. This is only a brief, initial assessment. Provide additional patient info after completing this 9 Line Report.

Number of Patients:	Male / Female	Age:	Weight:
Conscious? <input type="checkbox"/> YES <input type="checkbox"/> NO = MEDEVAC!			
Breathing? <input type="checkbox"/> YES <input type="checkbox"/> NO = MEDEVAC!			
Mechanism of Injury: What caused the injury?			
Lat/Long (Datum NAD83)			

4. SEVERITY OF EMERGENCY, TRANSPORT PRIORITY

SEVERITY	TRANSPORT PRIORITY
<input type="checkbox"/> URGENT-RED Life threatening injury or illness. <i>Ex: Unconscious, difficulty breathing, bleeding severely, 2° – 3° burns more than 4 palm sizes, heat stroke, disoriented.</i>	Ambulance or MEDEVAC helicopter. Evacuation need is IMMEDIATE.
<input type="checkbox"/> PRIORITY-YELLOW Serious Injury or illness. <i>Ex: Significant trauma, not able to walk, 2° – 3° burns not more than 1-2 palm sizes.</i>	Ambulance or consider air transport if at remote location. Evacuation may be DELAYED.
<input type="checkbox"/> ROUTINE-GREEN Not a life threatening injury or illness. <i>Ex: Sprains, strains, minor heat-related illness.</i>	Non-Emergency. Evacuation considered Routine of Convenience.

5. TRANSPORT PLAN:

Air Transport: (Agency Aircraft Preferred)

<input type="checkbox"/> Helispot	<input type="checkbox"/> Short-haul/Hoist	<input type="checkbox"/> Life Flight	<input type="checkbox"/> Other
Ground Transport:			
<input type="checkbox"/> Self-Extract	<input type="checkbox"/> Carry-Out	<input type="checkbox"/> Ambulance	<input type="checkbox"/> Other

6. ADDITIONAL RESOURCE/EQUIPMENT NEEDS:

<input type="checkbox"/> Paramedic/EMT(s)	<input type="checkbox"/> Crew(s)	<input type="checkbox"/> SKED/Backboard/C-Collar
<input type="checkbox"/> Burn Sheet(s)	<input type="checkbox"/> Oxygen	<input type="checkbox"/> Trauma Bag
<input type="checkbox"/> Medication(s)	<input type="checkbox"/> IV/Fluid(s)	<input type="checkbox"/> Cardiac Monitor/AED
<input type="checkbox"/> Other (i.e. splints, rope rescue, wheeled litter)		

7. COMMUNICATIONS:

Function	Channel Name/Number	Receive (Rx)	Tone/NAC *	Transmit (Tx)	Tone/NAC *
COMMAND	CARNS Rpt Channel 1	172.4250	1035	170.1000	1035
COMMAND	OASIS Rpt Channel 2	172.4250	1035	171.6250	1035
COMMAND	CMD Channel 12	166.6125	No Tone	168.4000	110.9
AIR-TO-GRND	AG/85 Channel 10	168.3250	No Tone	168.3250	No Tone
TACTICAL					

*(NAC for digital radio system)

8. EVACUATION LOCATION:

Lat/Long (Datum NAD83) <i>EX: N 40 42.45' x W 123 03.24'</i>	
Patient's ETA to Evacuation Location:	
Helispot/Extraction Size and Hazards:	

9. CONTINGENCY:

Considerations: <i>If primary options fail, what actions can be implemented in conjunction with primary evacuation method? Be thinking ahead...</i>	REMEMBER: Confirm ETA's of resources ordered Act according to your level of training Be Alert. Keep Calm. Think Clearly. Act Decisively.
--	--

