



Incident Action Plan

Day Operational Period

Thursday 4/27/17

through

Saturday 4/29/17

0800-2000

Cowbell Fire

FL-BCP-017033

PPKX1417 (1502) / FFF2000000KX140

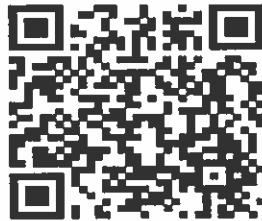
(21,840 acres, 75% contained)

MM 87

FL-FPR-170001


PRKZP317 (1502) / FFF2000000KZP30

(516 acres, 80% contained)




QR CODE
INCIDENT MAP


STOP....THINK...TALK... *THEN ACT!*

INCIDENT OBJECTIVES	1. Incident Name Cowbell Fire	2. Date Prepared 4/26/217	3. Time Prepared 1200
4. Operational Period 4/27/17 to 4/29/2017 0800 - 2000			
5. General Control Objectives For The Incident			
<u>Objectives for the Incident:</u> <ul style="list-style-type: none"> • Protection of human life is top priority through the use of sound risk management decisions that are commensurate with values at risk. • Protect private property and infrastructure, federal facilities, critical transportation corridors, recreational and cultural resource values, T&E species and their habitat (e.g. Florida Panther, Florida bonneted bat, Red-Cockaded Woodpecker), and wilderness values through coordination with READS and following MIST Tactics on initial and extended attack fires. • Provide opportunities to communicate and educate the public on the role of fire in the BCP and FPR ecosystems through social media and other outlets. • Provide training opportunities for Preserve, State, and local federal fire agency personnel to actively enhance successional planning of future firefighting personnel. • Sustain and enhance relationships with the people we serve. 			
<u>Control Objectives:</u> <ul style="list-style-type: none"> • Utilize confine, contain, and point source protection strategies and tactics that commit responders only to operations where and when they can be successful. • In order to minimize impacts to high values including Seminole and Miccosukee tribal lands, Sanctuary community, and private land within and near to the boundaries of the Big Cypress National Preserve and Florida Panther Wildlife Refuge, keep Cowbell fire: <ul style="list-style-type: none"> ○ West of Add 14 and Add 17 ○ South of the Preserve boundary ○ North of Interstate 75 ○ East of State Highway 29 • In order to minimize impacts to infrastructure and private land within and adjacent to the Florida Panther Wildlife Refuge, keep the MM87 fire: <ul style="list-style-type: none"> ○ West of Fakahatchee Strand. ○ North of I-75. ○ South and east of the refuge boundary. • Provide initial attack for Big Cypress National Preserve and Florida Panther Refuge in coordination with local resources. • Minimize impact on I-75, State Road 29 and US Highway 41 in order to avoid safety threats to the public and fire fighters. 			
6. Weather forecast for Period See attached weather forecast.			
7. General Safety Message Look up, look down, look all around for hazards, recognize them and mitigate them.			
8. ATTACHMENTS (X IF ATTACHED) <ul style="list-style-type: none"> <li style="width: 33%;">[X] Organization List - ICS 203 <li style="width: 33%;">[X] Medical Plan - ICS 206 <li style="width: 33%;">[X] Base Camp Map _____ <li style="width: 33%;">[X] Division Assignment Lists - ICS 204 <li style="width: 33%;">[X] Air Ops – ICS 220 <li style="width: 33%;">[X] Vicinity Map _____ <li style="width: 33%;">[X] Communications Plan - ICS 205 <li style="width: 33%;">[X] Incident Map <li style="width: 33%;">[X] Phone List _____ 			
9. Prepared By (Planning Section Chief) Michael J Williams (t)	10. Approved By (Incident Commander) Paul Varnedoe ICT3 		

ORGANIZATION ASSIGNMENT LIST (ICS 203)

1. Incident Name:		2. Operational Period: 3-DAY	
COWBELL		Date/Time From: 04/27/2017 0800 THU	Date/Time To: 04/29/2017 2000 SAT
3. Incident Commander(s) and Command Staff:		RADO/EDRC	MIRA PETERS
IC/UC	PAUL VARNEDOE BYRON HART (T)	BASE CAMP MANAGER	KYLER MCCARREL DON RUMBACK
LIAISON OFFICER	ANDY GASTON JEFFREY OWENBY (T)	EQUIPMENT MANAGER	JEFF COOPER (T)
SAFETY OFFICER	MARK HELM	7. Operations Section:	
INFORMATION OFFICER	MICHAEL R WILLIAMS JASON NEDLO (T)	OPS SECTION CHIEF	PAUL REYNOLDS
4. Agency/Organization Representative(s):		DIVISION/GROUP	A / D GEORGE ALLALUNIS DOUGLAS CATES (T)
Agency/Organization	Name	DIVISION/GROUP	G / K / Z JAMES WETTSTAED WILLIE ADAMS (T)
BIG CYPRESS NATIONAL PRESERVE	TAMMY WHITTINGTON J.D. LEE	DIVISION/GROUP	INITIAL ATTACK ROBERT BERTOLINA AARON EDWARDS (T)
BICY CHIEF OF FIRE AND AVIATION	JORDON MCKNIGHT	DIVISION/GROUP	MM87 FIRE WILLARD WORLEY
BICY /PANTHER AFMO	BYRON HART	7b. Air Operations Branch:	
PANTHER ZONE FMO	CASS PALMER	AIR OPS	MIKE MOWERY
COLLIER COUNTY SHERIFF	LT. JAKE WALKER	OASIS HELIBASE MANAGER	MARK OETZMANN
SEMINOLE TRIBE OF FLORIDA	GRANT STEELMAN	8. Finance/Administration Section:	
FLORIDA HIGHWAY PATROL	LT. JOSEPH BOWERS	CHIEF	MEGAN MACHT
GREATER NAPLES FIRE RESCUE	J. NOLAN SAPP	TIME UNIT	KELLY DONALDSON (T)
FFS COLLIER CO. FOREST AREA SUP	TONY CURELLA		
FFS HENDRY CO. FOREST AREA SUP	JOE LECEA		
5. Planning Section:			
CHIEF	MICHAEL J WILLIAMS		
DOCUMENTATION UNIT	BOB SOBCZAK		
DEMOBILIZATION UNIT	LAURIE OLIVER		
GIS SPECIALIST	MINDY WRIGHT		
TECHNOLOGY SUPPORT SPECIALIST	SCOTT BISHAW (T)		
INCIDENT METEOROLOGIST	STEVEN IPPOLITI		
6. Logistics Section:			
CHIEF	STEVE FRICK		
GROUND SUPPORT UNIT	JERRY LYNCH		
COMMUNICATIONS UNIT	RON REGAN		
MEDICAL UNIT	CODY GILMORE SHAWN CLARK		
SECURITY UNIT	BRETT WEHRLE DANNY MOSS		
ORDERING MANAGER	TAMMIE PERNAS		
9. Prepared By:	Name: MICHAEL J WILLIAMS	Position/Title: PLANNING SECTION CHIEF	Signature: 
ICS 203	IAP Page	Date/Time: 04/26/2017 1700	

FIRE BEHAVIOR FORECAST

FORECAST NUMBER: #24	TYPE OF FIRE: Wildland
FIRE NAME: Cowbell	OPERATIONAL PERIOD: 04/27/2017-4/29/2017
DATE ISSUED: 04/26/2017	TIME ISSUED: 1800
UNIT: Big Cypress Preserve	SIGNED: <i>Glen Fortenberry</i> 

FUEL ASSUMPTIONS:

Primary fuels consist of grass, shrub, and pine overstory with shrub palmetto understory and timber litter. Current fuel conditions are favorable for active fire behavior within the grass and shrub fuels. Fire activity will greatly diminish in the wide cypress strands. The current drought conditions have led to both live and dead fuel moistures reaching levels of concern.

The fuel moisture:

Calculated 1 hour fuel moistures with expected warming and drying trend for Thursday and Friday and slightly more moist air on Saturday: 4/27—5-6% 4/28-5-6% 4/29-7-8%

10 hr fuel moisture estimated at 7-9% all three days

100 hr estimated at 10% 1000 hr estimated at 16% for all three days

Critical fire behavior thresholds: 1 HR Fuel Moisture <6%, RHs below 40% and a Dispersion Index greater than 60.

THURSDAY AND FRIDAY, TWO OF THE THREE ARE MET (RH AND FM)

WEATHER SUMMARY

See attached weather forecast

General Fire Behavior Forecast: RH levels are dropping and the dry fuels can support very active fire behavior with > 1/4 to >1/2 mile an hour rate of spread and 0.3 mile spotting which can greatly enhance the ROS. **Spotting is very likely with high PIG.** Head fire flame lengths in heavy fuels can exceed 20 feet.

Specific:

Cowbell: Smoldering fire expected early, then creeping, backing and flanking fire expected in the interior of the fire. Continue to monitor for hot spots west of Nobles Grade road.

MM 87: Only smoldering early, and then creeping, backing and flanking fire as the interior island of fuel continues to burn. As winds come from the SSE, some head fire through the interior can take place.

Initial Attack: Spotting (4/27&4/28 PIG up to 70%--4/29 PIG up to 60%) will be a concern with new initial attacks especially in pine/palmetto stands. Expect rapid growth and high rates of spread with any initial attack. Control efforts will be difficult especially in pine/palmetto fuels.

PREDICTIONS FOR MOST ACTIVE TIME OF PEAK BURNING PERIOD USING WEATHER FROM INCIDENT IMET. HIGHER WINDS ON SATURDAY WILL COMPENSATE FOR HIGHER FM.


Fuel Model	Fire Behavior
Grass	ROS 45-65 ch/hr, FL 5-8 ft.
Shrub	ROS 15-25 ch/hr, FL 8-11 ft
Timber Litter (Cypress)	ROS 5-7 ch/hr, FL 3-4 ft
Maximum Spotting	0.3 mile
Probability of ignition	4/27-28-70% in all models 4/29-60% in all models

AIR OPERATIONS: Inversion lifts early each day. No anticipated issues for air operations.

FIRE BEHAVIOR SAFETY: Take fire weather readings often. Fuels are conditioned and weather will supply the most changes to potential fire behavior. **Have LCES in place before taking action!!**



Fire Weather Forecast

FORECAST NO: 25 NAME OF FIRE: Cowbell Fire
 PREDICTION FOR: Thursday Day Shift UNIT: Big Cypress National Preserve
 SHIFT DATE: April 27, 2017 Incident Meteorologist: *Steven Appoliti* 
 FORECAST ISSUED: 1800 April 26, 2017 954-826-9405

DISCUSSION: High pressure, to the east, will turn the wind more southerly today. The relative humidity will be on the decrease, into the low 40s, with temperatures on the rise, into the lower 90's. This trend will continue through tomorrow.

TODAY (THURSDAY DAY SHIFT):

WEATHER: Partly cloudy. **Red Flag Warning for low RH for the burn area.**
WIND (20 FT): South around 10 mph.
MAX TEMPERATURES: 90 to 93.
MIN RH: 39%.
Chance of measurable rain: 15% LAL: 2
DISPERSION: 55 MAX **MIXING HEIGHT:** 6000 **TRANSPORT WIND:** South 10 mph

TONIGHT (THURSDAY NIGHT):

WEATHER: Mostly clear.
WIND (20 FT): Light and variable.
MIN TEMPERATURES: Around 70.
MAX RH: 85 to 90%. LVORI 8 (max). LAL: 1 Dispersion: 2 Chance measurable rain: 0%.

FRIDAY:

WEATHER: Partly Cloudy. **Possible Red Flag conditions.**
WIND (20 FT): East southeast around around 12 mph.
MAX TEMPERATURES: 91 to 94F.
MIN RH: 35%.
Chance of measurable rain: 15%. LAL: 2
DISPERSION: 55 MAX **MIXING HEIGHT:** 5500 **TRANSPORT WIND:** East southeast 15 mph.

GENERAL OUTLOOK SATURDAY THROUGH MONDAY: High pressure will move slowly to the northeast while strengthening this weekend. This will strengthen the wind, while keeping them ESE over the weekend, to South on Monday. Slight chance of showers through the Monday, with an isolated thunderstorm possible as well.

WIND: Saturday: East southeast: 15 mph Sunday: Southeast 15 mph Monday: South 15 mph
WEATHER/TEMPERATURE: Partly cloudy with a slight chance of showers over the weekend. Isolated thunderstorm may also be possible. Highs in the upper 80's. Lows in the upper 60's to around 70.
MIN RH: Saturday: 48% Sunday: 50% Monday: 50%
NIGHT TIME RECOVERY: 80% to 86% each night.



Current Incident
area RAWS

Sunrise Thursday: 6:51 am
 Sunset Thursday: 7:56 pm

Source: US Naval Observatory



Weather Matrix

HEALTH AND SAFETY MESSAGE

If you SEE something...SAY something

INCIDENT: Cowbell & MM87 Fires

DATE: 04/27-29/2017

TIME: Day Shift

Major Hazards and Risks:

- SITUATIONAL AWARENESS
- DRIVING & TRAFFIC
- HYDRATION
- RISK MANAGEMENT

The greatest probability of an accident occurring is from unsure footing. The terrain is flat but many obstacles are on the surface of the ground that can cause slips, trips and falls. Ensure proper balance as you walk, move and work in the fire area.

The greatest potential for loss is from a vehicle accident. Firefighters will be driving on Interstates as well as two track roads. Long driving times will be required to access remote location of the incidents. On incidents, backing accidents occur more often than any other type of vehicle mishaps. Should you as a driver have another passenger with you, have that person assist in guiding the vehicle when backing. **Drive Defensively.**

Be aware that there are numerous species of wildlife in this area of Florida. Some can be dangerous. Do not tamper, taunt, or feed the wildlife.

The weather is getting hotter during the day. Humidity is high and takes its toll on firefighters especially, those not from this area of the south. Continue to take in fluids all day and hydration should continue into the evening.

Safety Officer: Mark Helm, SOF2

Lessons are repeated until learned


Division/Group Assignment List (ICS 204 WF)

1. Incident Name:			3.			
COWBELL			Branch:		Division/Group:	
2. Operational Period:			A / D			
3-DAY						
Date/Time From: 04/27/2017 0800 THU		Date/Time To: 04/29/2017 2000 SAT				
4. Operations Personnel						
OPERATIONS CHIEF		PAUL REYNOLDS		AIR OPERATIONS		MIKE MOWERY
DIVISION / GROUP SUPERVISOR		GEORGE ALLALUNIS DOUGLAS CATES (T)				
5. Resources Assigned this Period						
Strike Team / Task Force / Resource Designator		LWD	Leader	Number Persons	Drop Off PT./Time	Pick Up PT./Time
HEQB O-225		05/04	GARY ROSE	1	ICP/0800	ICP/2000
HCM MODULE - SUPPRESSION - BIFZ #2 O-106		04/30	SAM DE LONG	8	ICP/0800	ICP/2000
MASTICATOR - HENDRY GRINDING E-159		05/04	CHAD MUDGE	1	ICP/0800	ICP/2000
6. Control Operations/Work Assignments:						
<p>Task:</p> <ul style="list-style-type: none"> • Patrol and mop up 25 feet. from control line • Monitor and patrol by air • Masticate access road in Sanctuary <p>Purpose:</p> <ul style="list-style-type: none"> • To keep fire confined and contained west of ADD 17/ADD 14 on east flank of fire • To protect structures and facilitate emergency evacuation. • To alert FHP of potential impact to I-75 • Keep fire contained north of I-75 • For possible contingency line <p>End State:</p> <ul style="list-style-type: none"> • Control fire perimeter west of ADD 17/ADD 14 to eliminate threat to Sanctuary area structures • Minimize risk to public traveling on I-75 • Confine fire perimeter to reduce threats to resource values at risk 						
7. Special Instructions:						
Establish and maintain LCES during operational period. Do not engage in fire suppression activities along I-75 shoulders unless traffic hazards have been mitigated. Follow the tracked vehicle requirement restrictions.						
8. Division/Group Communication Summary						
Function	Channel	RX Frequency N/W	RX Tone/NAC	TX Frequency N/W	TX Tone/NAC	Mode
COMMAND	12	166.6125		168.4000	110.9	A
COMMAND	13	168.7000		170.9750	110.9	A
TACTICAL	4	168.6000		168.6000		A
AIR TO GROUND	10	168.3250		168.3250		A
9. Prepared By (Resource Unit Leader)			Approved By (Planning Section Chief)		Date	Time
SUE WILDER./ STEVE WELLS, RESL			MICHAEL J WILLIAMS		04/26/2017	1700


Division/Group Assignment List (ICS 204 WF)

1. Incident Name:			3.			
COWBELL			Branch:		Division/Group:	
2. Operational Period:			G / K / Z			
3-DAY						
Date/Time From: 04/27/2017 0800 THU		Date/Time To: 04/29/2017 2000 SAT				
4. Operations Personnel						
OPERATIONS CHIEF		PAUL REYNOLDS		AIR OPERATIONS		MIKE MOWERY
DIVISION/GROUP SUPERVISOR		JAMES WETTSTAED WILLIE ADAMS (T)				
5. Resources Assigned this Period						
Strike Team / Task Force / Resource Designator		LWD	Leader	Number Persons	Drop Off PT./Time	Pick Up PT./Time
HC1 CREW - T1 - FLAGSTAFF IHC C-9		05/03	ANDREW M PATTERSON	20	ICP/0800	ICP/2000
MAVERICK BUGGY #2 E-66		05/27	BLAKE SHAW	1	ICP/0800	ICP/2000
TRANSPORT BUGGY E-38		05/30	CLINT WEEKS	1	ICP/0800	ICP/2000
TRANSPORT BUGGY E-39		05/30	CLINTON WEEKS	1	ICP/0800	ICP/2000
EMPF O-250		05/05	CODY GILMORE	1	ICP/0800	ICP/2000
6. Control Operations/Work Assignments:						
<p>Task:</p> <ul style="list-style-type: none"> • Patrol and mop up 25 ft. from control line. • Continue monitoring and using aerial support to contain slop overs on Nobles Grades. • Monitor Kissimmee Billy Strand using aerial support. • Continue to cold trail and extinguish hot spots on Kissimmee Billy Strand. <p>Purpose:</p> <ul style="list-style-type: none"> • To keep fire contained east of Kissimmee Billy Strand while minimizing fire fighter exposure. <p>End State:</p> <ul style="list-style-type: none"> • Confine fire perimeter to reduce threats to resource values at risk. 						
7. Special Instructions:						
Utilize MIST tactics as outlined in Fire Operations Guide for BICY. Follow tracked vehicle requirement restrictions.						
8. Division/Group Communication Summary						
Function	Channel	RX Frequency N/W	RX Tone/NAC	TX Frequency N/W	TX Tone/NAC	Mode
TACTICAL	8	166.750		166.750		A
COMMAND	15	173.0375		167.3250	110.9	A
TACTICAL	5	168.2500		168.2500		A
AIR TO GROUND	10	168.3250		168.3250		A
9. Prepared By (Resource Unit Leader)			Approved By (Planning Section Chief)		Date	Time
SUE WILDER/STEVE WELLS			MICHAEL J WILLIAMS		04/26/2017	1700

Division/Group Assignment List (ICS 204 WF)

1. Incident Name:			3.			
COWBELL			Branch:		Division/Group: INITIAL ATTACK	
2. Operational Period: 3-DAY						
Date/Time From: 04/27/2017 0800 THU		Date/Time To: 04/29/2017 2000 SAT				
4. Operations Personnel						
OPERATIONS CHIEF		PAUL REYNOLDS		AIR OPERATIONS		MIKE MOWERY
DIVISION / GROUP SUPERVISOR		ROBERT BERTOLINA AARON EDWARDS (T)				
5. Resources Assigned this Period						
Strike Team / Task Force / Resource Designator		LWD	Leader	Number Persons	Drop Off PT./Time	Pick Up PT./Time
TFLD O-223		04/29	NOAH DANIELS	1	ICP/0800	ICP/2000
TFLD O-106.4		04/30	DEVIN JOHNSON (T)	1	ICP/0800	ICP/2000
HC2I CREW - T2IA - PR MA #3 C-7 MOD B		05/04	LOUIS SAEZ	10	ICP/0800	ICP/2000
ENG6 ENGINE - T6 - CO-PSF - 7-1 E-140		05/09	JOSHUA MORRIS	3	ICP/0800	ICP/2000
BICY SUPPRESSION BUGGY #3 E-65		05/11	MATT HEINZ	1	ICP/0800	ICP/2000
EMPF O-249		05/05	SHAWN CLARK	1	ICP/0800	ICP/2000
6. Control Operations/Work Assignments:						
Task:						
<ul style="list-style-type: none"> • Coordinate with BICY duty officer for notification of newly reported ignitions. Coordinate initial attack action with assigned aviation and /or ground assets • Determine IA resource pre-positioning needs across BICY and FPWR • Coordinate with the Liason if possibility of smoke impact to Highway 41, Highway 29 or Interstate 75. 						
Purpose:						
<ul style="list-style-type: none"> • Ensure timely response on any IA within BICY and FPWR 						
End State:						
<ul style="list-style-type: none"> • Protect human life. Minimize environment damage to protect habitat of threatened and endangered species. Minimize damage to public and private property 						
7. Special Instructions:						
<p>IA will be staged at the Deep Lake staging area.</p> <p>Follow tracked vehicle requirement restrictions. Establish and maintain LCES during operational period. Utilize MIST tactics as outlined in Fire Operations Guide for BICY. All initial attack will go through BICY Fire Dispatch Center. Incident within an Incident will go through Cowbell communications.</p>						
8. Division/Group Communication Summary						
Function	Channel	RX Frequency N/W	RX Tone/NAC	TX Frequency N/W	TX Tone/NAC	Mode
BICY RPTR	1	172.4250	1035	170.1000	1035	D
BICY RPTR	2	172.4250	1035	171.6250	1035	D
PANTHER RPTR	7	164.6250	1188	163.1500	1188	D
TACTICAL	9	166.8250		166.8250		A
AIR TO GROUND	6	169.1125		169.1125		A
9. Prepared By (Resource Unit Leader)			Approved By (Planning Section Chief)		Date	Time
SUE WILDER/STEVE WELLS			MICHAEL J WILLIAMS 		04/26/2017	1700

Division/Group Assignment List (ICS 204 WF)

1. Incident Name:			3.			
COWBELL			Branch:		Division/Group:	
2. Operational Period: 3-DAY					MM 87 FIRE	
Date/Time From: 04/27/2017 0800 THU		Date/Time To: 04/29/2017 2000 SAT				
4. Operations Personnel						
OPERATIONS CHIEF		PAUL REYNOLDS		AIR OPERATIONS		MIKE MOWERY
DIVISION / GROUP SUPERVISOR		WILLIARD WORLEY				
5. Resources Assigned this Period						
Strike Team / Task Force / Resource Designator		LWD	Leader	Number Persons	Drop Off PT./Time	Pick Up PT./Time
TFLD O-173		04/29	JARED NOBLES (T)	1	ICP/0800	ICP/2000
*HC2I CREW - T2IA - PR MA #3 C-7 MOD A		04/27	ROBERTO MARTINEZ	10	ICP/0800	ICP/2000
ENG6 ENGINE - T6 - CSP 661 E-59		05/04	CHRIS CORRIGAN	2	ICP/0800	ICP/2000
ENG6 ENGINE - T6 - 31 E-7		04/29	JONATHAN O'GORMAN	2	ICP/0800	ICP/2000
ENG6 ENGINE - T6 - 658 E-157		05/04	RUSS MARSHALL	3	ICP/0800	ICP/2000
ENG3 ENGINE - T3 - CA-SHF - 51 E-99		05/05	BRIAN BUCHNER	5	ICP/0800	ICP/2000
*DUECE BUGGY IA - 607 E-89		05/01	SAM ALLEN	3	ICP/0800	ICP/2000
*BICY SWAMP BUGGY #5 E-64		05/06	UNSTAFFED	1	ICP/0800	ICP/2000
*SLIMER SUPPRESSION BUGGY E-80		04/28	JOSH MANLEY	4	ICP/0800	ICP/2000
6. Control Operations/Work Assignments:						
Task:						
• Patrol and conduct mop up 25 feet from control line.						
Purpose:						
• To keep fire contained within burn unit #3.						
End State:						
• Protect human life. Minimize environment damage to protect habitat of threatened and endangered species. Minimize damage to public and private property						
7. Special Instructions:						
Establish and maintain LCES during operational period. Utilize MIST tactics as outlined in Fire Operations Guide for BICY.						
*Additional resources identified for initial attack as needed.						
8. Division/Group Communication Summary						
Function	Channel	RX Frequency N/W	RX Tone/NAC	TX Frequency N/W	TX Tone/NAC	Mode
BICY RPTR	1	172.4250	1035	170.1000	1035	D
BICY RPTR	2	172.4250	1035	171.6250	1035	D
PANTHER RPTR	7	164.6250	1188	163.1500	1188	D
TACTICAL	9	166.8250		166.8250		A
AIR TO GROUND	6	169.1125		169.1125		A
9. Prepared By (Resource Unit Leader)			Approved By (Planning Section Chief)		Date	Time
SUE WILDER/ STEVE WELLS RESL			MICHAEL J WILLIAMS 		04/26/2017	1700

AIR OPERATIONS SUMMARY

OPERATIONAL PERIOD DATE: 04-27-2017

0800-2000

PREPARED DATE/TIME: 04/26/2017 1600

1. INCIDENT NAME: Cowbell	2. PREPARED BY: Mike Mowery	3. Sunrise: 0652 Sunset: 1954
4. REMARKS (Safety Notes, Hazards, Air Operations Special Equipment, etc.): Medivac Aircraft: N16HX MTR- Located along state road 29. Fire Dispatch gets MTR activity every morning Do not over fly structures with external load missions. All aircraft should use strobes and running lights in smoky conditions. Hazards: Snags, non-incident aircraft, and winds. Contract helicopter working special use permit in North Central portion of BICY. Area identified on pilot briefing board. ATGS has air to air communications. Cease all operations at sunset		
5. Squawk 1255 (A-20) TFR—7/7786 ZMA FL, Airspace 25 nm NE of Ochopee SFC 3000ft. Contact 118.825 NOTAM – 04/054 – Airspace firefighting aircraft 5nm of (9FL7) SFC 2000ft.		

6. PERSONNEL	Phone	7. FREQUENCIES			FM	8. FIXED WING	FAA#/Base
Air Operations—Mike Mowery	870-214-0034	Air/Air Rotor (A-5)	AM	123.575		Air Attack	197GB (A-18)—Acro Commander MKY
ATGS: Jay Lindgren ATGS (T): Trevor Pollock	406-461-1652 435-592-4919	Air/Ground Cowbell			168.3250 RX/TX (A)		
<u>Oasis Helibase (9FL7)</u> HEB1 Mark Oetzmann HEB1(T) Jay Thatcher HMGB Jeremy Alexander N28HX HMGB Cory Dolberry N16HX	239-695-0278 208-315-5030 970-903-7922 208-866-9709 208-993-0669	Air/Ground IA Air/Ground (A-11)			169.1125 RX/TX (A) 167.9500 RX/TX (A)		
Immokalee Airport HMGB—Tracy Elliott H-718	303-910-7619	Flight Following (BICY)			169.7250 RX N1514 163.3875 TX N1738		
Big Cypress Fire Dispatch	239-695-9280 x 104	Air/Guard			168.6250 RX/TX Tone 110.9		
		Deck			166.7750		

9. HELICOPTERS (Use Additional Sheets As Necessary)

FAA N# or Designator	TY	MAKE/MODEL	BASE	START	REMARKS	FAA N# or Designator	TY	MAKE/MODEL	BASE	START	REMARKS
718 (A-16)	1	CH-54	Immokalee	0900	Tanked	16HX (A-9)	2	Bell 205	Oasis	0900	Crew/Bucket
743PH (A-40)	3	Bell 407	Oasis	0800	Map/Recon	28HX A17)	2	Bell 205	Oasis	0900	Crew/Bucket

TYPE/FUNCTION	NAME OF PERSONNEL OR CARGO (if applicable) OR INSTRUCTIONS FOR TACTICAL AIRCRAFT	MISSION START	FLY FROM	FLY TO
Mapping/Reconnaissance	As Requested	0930		
Water Drops	As Requested	0930		

INCIDENT RADIO COMMUNICATIONS PLAN (ICS 205)

3. Operational Period: DAY		Date/Time From: 04/27/2017 0800		Date/Time To: 04/27/2017 2000					
Zone Group	Ch #	Function	Assignment	RX Freq	RX Tone/NAC	TX Freq	TX Tone/NAC	Mode (A,D, or M)	Remarks
	1	CARNS RPT	Initial Attack	172.4250	1035	170.1000	1035	D	Preserve RPTR
	2	OASIS RPT	Initial Attack	172.4250	1035	171.6250	1035	D	Preserve RPTR
	3	BCY LCL		166.7750	No Tone	166.7750	No Tone	A	
	4	BICY TAC 1	Division A /D	168.6000	No Tone	168.6000	No Tone	A	
	5	BICY LCL 2		168.2500	No Tone	168.2500	No Tone	A	
	6	A/G 59	Initial Attack	169.1125	No Tone	169.1125	No Tone	A	
	7	Panther RPT	Initial Attack	164.6250	1188	163.1500	1188	D	Panther Refuge RPTR
	8	PANTHER TAC 1	DIVISION G/Z/K	166.7500	No Tone	166.7500	No Tone	A	
	9	PANTHER TAC 2	Initial Attack	166.8250	No Tone	166.8250	No Tone	A	
	10	A/G 85	ALL DIVISIONS	168.3250	No Tone	168.3250	No Tone	A	
	11	Everglades TAC 1	Parliament Misc.	166.7250	0659	166.7250	0659	D	
	12	CMD 12	DIVISION A/Z	166.6125	No Tone	168.4000	110.9	A	Command RPTR-Linked
	13	CMD 13	DIVISION D/G/Z	168.7000	No Tone	170.9750	110.9	A	Command RPTR-Linked
	14	A/G	Aerial Ignition	167.9500	No Tone	167.9500	No Tone	A	
	15	CMD 15	DIV G	173.0375	No Tone	167.3250	110.9	A	Command RPTR-Linked
	16	AIR GUARD		168.6250	No Tone	168.6250	110.9	A	
Name: RON REGAN		772-631-2585		Signature: /s/ Mark Spann					
				Date/Time: 04/27/2017	1200				

STATE IA RADIO COMMUNICATIONS PLAN (ICS 205)

3. Operational Period: DAY		Date/Time From: 04/27/2017 0800 Date/Time To: 04/27/2017 2000									
Zone Group	Ch #	Function	Assignment	RX Freq	RX Tone/NAC	TX Freq	TX Tone/NAC	Mode (A, D, or M)	Remarks		
	1	CARNS RPT	Initial Attack	172.4250	1035	170.1000	1035	D	Preserve RPTR		
	2	OASIS RPT	Initial Attack	172.4250	1035	171.6250	1035	D	Preserve RPTR		
	3	BCY LCL	Structure/Div S	166.7750	No Tone	166.7750	No Tone	A			
	4	BICY TAC 1	Division A /D	168.6000	No Tone	168.6000	No Tone	A			
	5	BICY LCL 2	DIVISION G	168.2500	No Tone	168.2500	No Tone	A			
	6	A/G 59	Initial Attack	169.1125	No Tone	169.1125	No Tone	A			
	7	Panther RPT	Initial Attack Parliament	164.6250	1188	163.1500	1188	D	Panther Refuge RPTR		
	8	PANTHER TAC 1	DIVISION Z/K	166.7500	No Tone	166.7500	No Tone	A			
	9	PANTHER TAC 2	Initial Attack	166.8250	No Tone	166.8250	No Tone	A			
	10	A/G 85	ALL DIVISIONS	168.3250	No Tone	168.3250	No Tone	A			
	11	Everglades TAC 1	Parliament Misc.	166.7250	0659	166.7250	0659	D			
	12	RED V22	STATE IA	154.2650	No Tone	154.2650	156.7	A			
	13	WHITE V21	STATE IA	154.2800	No Tone	154.2800	156.7	A			
	14	BLUE V23	STATE IA	154.2950	No Tone	154.2950	156.7	A			
	15	CMD 15	DIV G	173.0375	No Tone	167.3250	110.9	A	Command RPTR-Linked		
	16	AIR GUARD		168.6250	No Tone	168.6250	110.9	A			
Name: RON REGAN 772-631-2585			Signature: /s/ RON REGAN								
				Date/Time: 04/26/2017		1800					

MEDICAL PLAN (ICS 206)

1. Incident Name: Cowbell Fire	2. Operational Period: Date From: 04-27-17 Date To: 04-29-17 Time From: 0800 Time To: 2000
--	--

3. Medical Aid Stations:			
Name	Location	Contact Number(s)/Frequency	Paramedics on Site?
Cody Gilmore (EMPF)/ Shawn Clark (EMPF)	As assigned daily	918-703-9103/918-770-5029	<input checked="" type="checkbox"/> Yes <input type="checkbox"/> No

4. Transportation (indicate air or ground):			
Ambulance Service	Location	Number(s)/Frequency	Level of Service
Collier County EMS (ground)	Everglades City (Medic 61)	911	<input checked="" type="checkbox"/> ALS <input type="checkbox"/> BLS
Collier County Med-Flight (air)	Naples Airport	911	<input checked="" type="checkbox"/> ALS <input type="checkbox"/> BLS
6HX Bell 205 (air) medical evacuation	Oasis Heli-base	168.3250 (A/G 85)	<input type="checkbox"/> ALS <input checked="" type="checkbox"/> BLS
Miami Dade Fire Rescue air hoist	Miami	911	<input type="checkbox"/> ALS <input checked="" type="checkbox"/> BLS

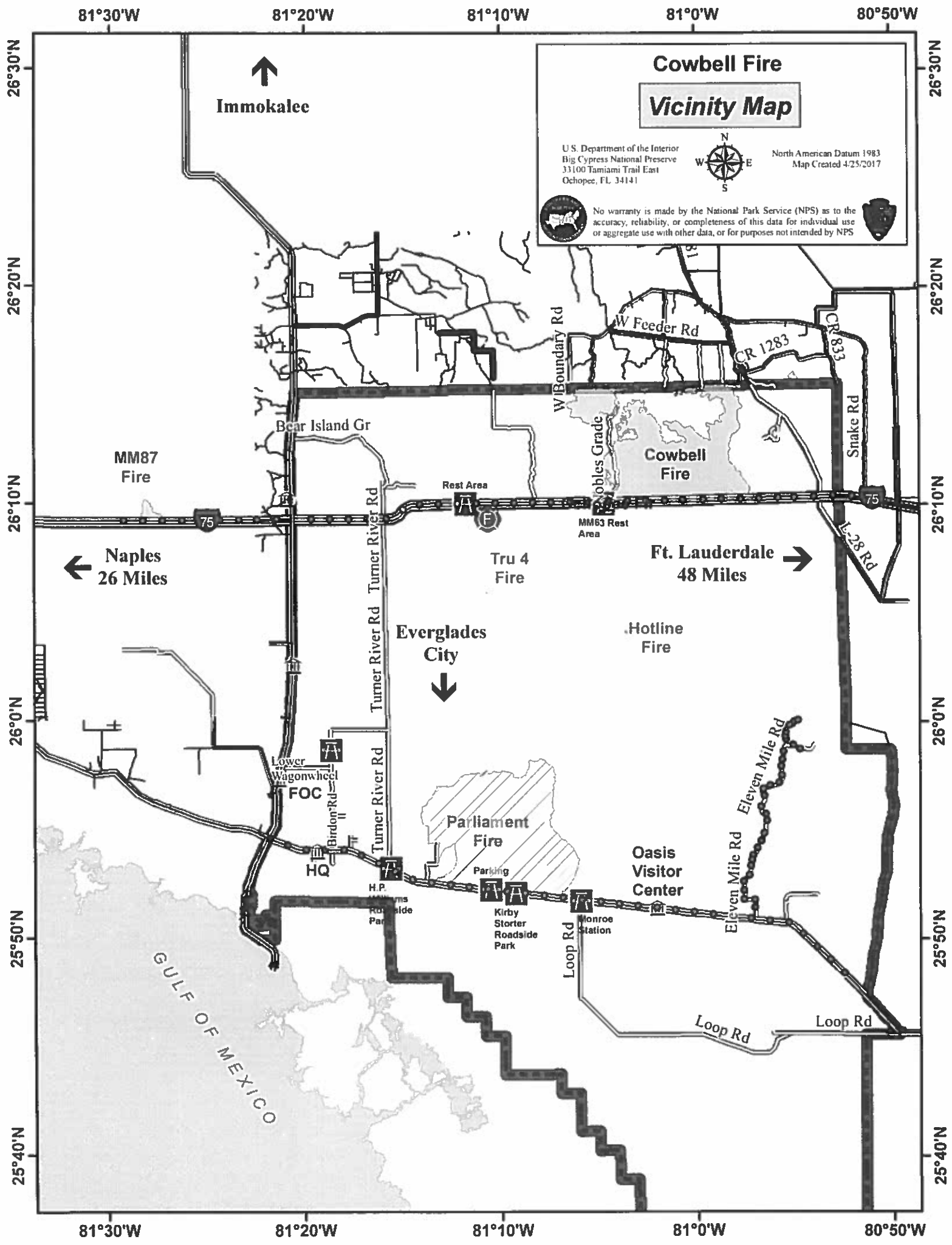
5. Hospitals:							
Hospital Name	Address	Contact Number(s)	Travel Time		Trauma Center	Burn Center	Helipad
			Air	Ground			
Physicians Regional Collier Blvd	8300 Collier Blvd. Naples, FL 34114 Lat:26°6.313'/Long: -81°41.106'	239-354-6000 (Main) 239-354-6190 (ER)	15	50	<input type="checkbox"/> Yes Level: _____	<input type="checkbox"/> Yes <input checked="" type="checkbox"/> No	<input checked="" type="checkbox"/> Yes <input type="checkbox"/> No
Physicians Regional Pine Ridge	6101 Pine Ridge Road, Naples 34119 Lat:26°12.833'/Long: -81°43.954'	239-348-4000 (Main) 239-304-4748 (ER)	15	50	<input type="checkbox"/> Yes Level: _____	<input type="checkbox"/> Yes <input checked="" type="checkbox"/> No	<input checked="" type="checkbox"/> Yes <input type="checkbox"/> No
Naples Community Hospital	350 7 th Street North, Naples 34102 Lat:26°9.046'/Long: -81°47.907'	239-513-7709 (Main) 239-436-5151 (ER)	15	60	<input checked="" type="checkbox"/> Yes Level: <u>2</u>	<input type="checkbox"/> Yes <input checked="" type="checkbox"/> No	<input checked="" type="checkbox"/> Yes <input type="checkbox"/> No
Jackson Memorial Hospital	1611 NW 12 Avenue, Miami Lat:25°47.508'/Long: -80°12.756'	305-585-1111 (Main) 305-585-6910 (ER)	20	60	<input checked="" type="checkbox"/> Yes Level: <u>1</u>	<input checked="" type="checkbox"/> Yes <input type="checkbox"/> No	<input checked="" type="checkbox"/> Yes <input type="checkbox"/> No
Kendal Regional Medical Center	11750 SW 40 th St., Miami 33175 Lat:25°43.916'/Long: -80°23.148'	305-223-3000 (Main) 305-227-5544 (ER)	20	50	<input checked="" type="checkbox"/> Yes Level: <u>1</u>	<input type="checkbox"/> Yes <input checked="" type="checkbox"/> No	<input checked="" type="checkbox"/> Yes <input type="checkbox"/> No

6. Special Medical Emergency Procedures:	
<ul style="list-style-type: none"> Patient or nearest responder notifies Group Supervisor who will respond to the scene and become the "incident within an incident" (IWI) commander. Group Supervisor will notify nearest medical responder and ICP-Communications of the incident and "Nine Line" report attached to the back of this IAP or page 108 of the IRPG. 	
<p>Call "784" (Emergency & Law Enforcement) Everglades Communications on the Oasis or Carns Repeater, or by phone at 1-800-788-0511 if it is determined that a pre-hospital medevac care, air hoist capability or snake bite treatment is required. MedFlight located at Naples Municipal Airport will be used for pre-hospital medevac care. Miami-Dade Fire Rescue (MDFR) Air Rescue Bureau will be used for air hoist rescue and also for snake bite treatment. Everglades Communications will advise the 911 dispatcher for Collier or Dade County for their helicopter to communicate through the Incident's Air/Ground frequency. Note: If possible, give coordinates in aviation format – Degrees Decimal Minutes</p>	

7. Prepared by (MEDL): Matthew Moran (T)/ Shanna Ellis Signature: <i>/s/ Matthew Moran Shanna F. Ellis</i>

8. Approved by (SOF1): Brian Beisel Signature: <i>/s/ Brian Beisel</i>

ICS 206	IAP Page _____	Date/Time: <u>04/26/2017</u>
---------	----------------	------------------------------



Cowbell Fire

Vicinity Map

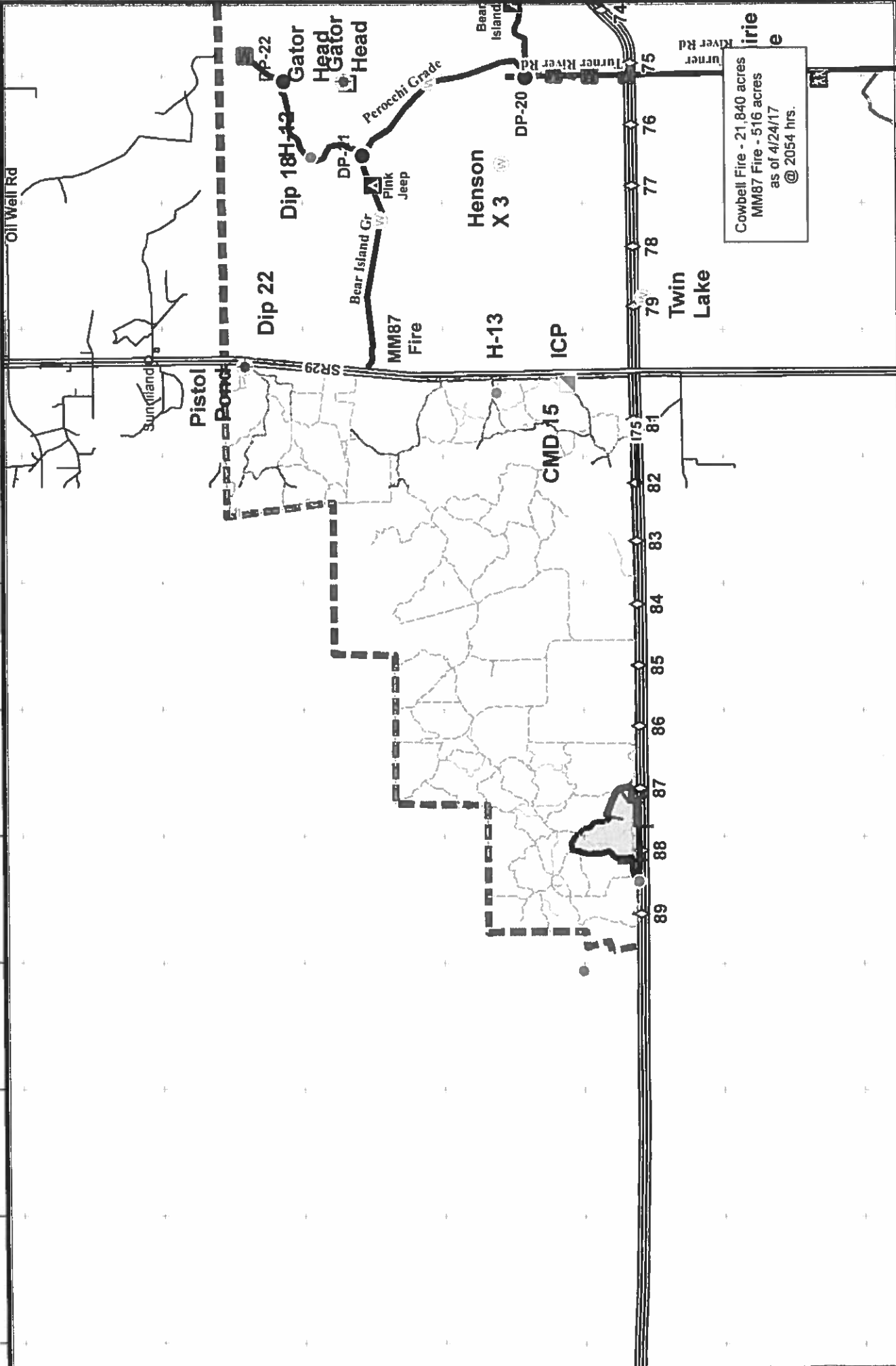
U.S. Department of the Interior
Big Cypress National Preserve
33100 Tamiami Trail East
Ochopee, FL 34141

North American Datum 1983
Map Created 4/25/2017

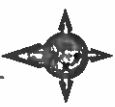


No warranty is made by the National Park Service (NPS) as to the accuracy, reliability, or completeness of this data for individual use or aggregate use with other data, or for purposes not intended by NPS





Cowbell Fire - 21,840 acres
 MM87 Fire - 516 acres
 as of 4/24/17
 @ 2054 hrs.

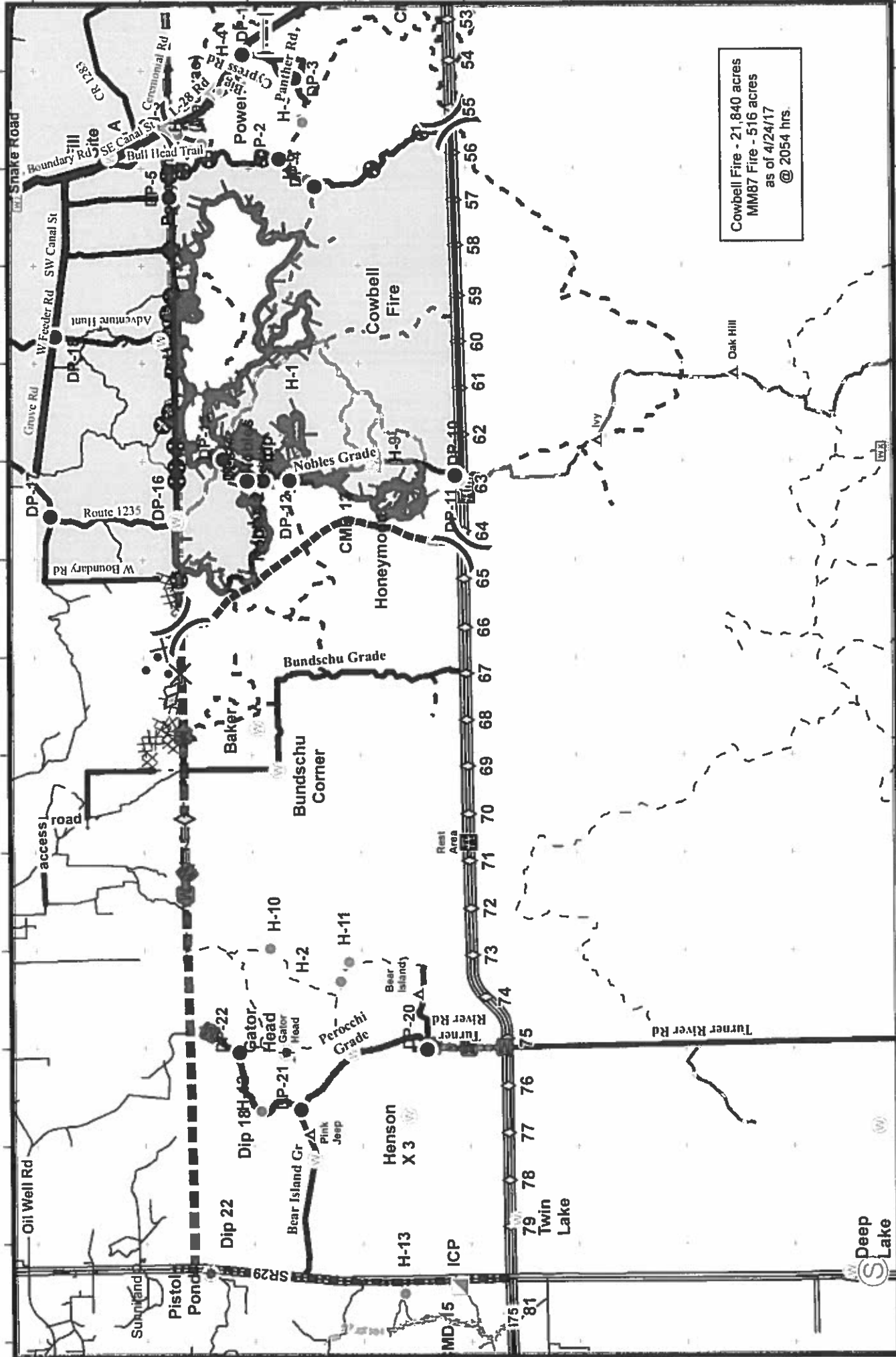


NAD 83 UTM 17
 0 0.5 1 2
 Mile

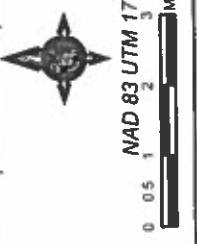
- Dip Site
- Drip Point
- Helipad
- Incident Command Post
- Repeater
- Water Source
- NWR Special Use Road
- Unrestricted Fire Edge
- Completed Line
- Prepared Masturbation Line
- NWR Roads
- Road
- Oil Well Rd
- Wechs Daily Fire Perimeter
- City
- Campground
- Office
- Trainroad
- Mile Marker
- CR 29; SR 29
- I-75
- Improved Road
- wechis
- Florida Trail
- Florida Panther NWR
- BICY presence



Cowbell Fire
 FL-BCP-017033
IAP Map
 3 Day IAP
 MM87



Cowbell Fire - 21,840 acres
 MM87 Fire - 516 acres
 as of 4/24/17
 @ 2054 hrs.



- Uncontrolled Fire Edge
- Completed Line
- M - M Mastication Line
- Completed Disk Line
- Proposed Line
- Rain Gauge
- Drop Point
- Hellspot
- Division
- Mobile Weather
- Incident Command Post
- Repeater
- Aerial Hazard
- Private Structures
- NPS Property
- Helibase
- Bridge_Locations
- 1-75
- Improved Road
- Primary Buggy Trail



Cowbell Fire
 FL-BCP-017033
IAP Map
 3 Day IAP
 Cowbell

PHONE LIST - COWBELL FIRE as of 4/26/2017

Position		Phone Number	Position	Name	Phone Number
COMMAND			OPERATIONS		
Incident Commander T3	Paul Varnedoe	423-650-2184	Ops Section Chief	Paul Reynolds	662-418-9743
Incident Commander (T)	Byron Hart	850-264-9567	Division A/D	George Allalunis	575-779-2036
Liaison Officer	Andy Gaston	706-508-2363	Division A/D (T)	Douglas Cates	541-760-5651
Liaison Officer (T)	Jeff Owenby	828-388-0401	Division G/K/Z	James Wettstaed	770-530-3950
Public Information	Michael R Williams	470-599-3926	Division G/K/Z (T)	Willie Adams	404-909-2757
Public Information (T)	Jason Nedlo	606-309-9072	Division Initial Attack	Robert Bertolina	760-914-7021
Safety Officer	Mark Helm	559-905-6554	Division Initial Attack (T)	Aaron Edwards	850-631-1608
			Division MM 87 Fire	Willard Worley	423-539-4310
PLANNING					
Plans Section Chief	Michael J Williams	828-835-0094			
Plans Section Chief/DMOB	Laurie Oliver	970-759-9611	AIR OPERATIONS		
Documentation Unit	Bob Sobczak	239-340-0200	Air Ops Branch Director (T)	Mike Mowery	870-214-0034
Meterologist	Steven Ippoliti	954-826-9405	Oasis Helibase Manager	Mark Oetzmann	208-315-5030
Technology Support T)	Scott Bishaw	239-595-9143			
GISS	Mindy Wright	239-450-2462	LOGISTICS		
			Chief	Steve Frick	218-821-6271
			Ground Support Unit Leader	Jerry Lynch	936-572-4852
FINANCE			Communications	Ron Regan	828-772-8514
Chief	Megan Macht	970-749-9734	Ordering Manager	Tammie Pernas	305-915-5060
Time Unit Leader	Kelly Donaldson	580-236-9339	Base Camp Manager	Kyler McCarrel	970-261-8046
Procurement	Leslie Solberg	360-553-9830	Medical Unit Leader	Shawn Clark	918-770-5029
			Medical Unit Leader	Cody Gilmore	918-703-9103
			RADO/EDRC	Mira Peters	335-271-8908
			Security Unit	Brett Wehrley	318-305-0640
Big Cypress National Preserve	Duty Officer	239-719-0241			

Medical Incident Report- "9 Line"

FOR ALL MEDICAL EMERGENCIES: IDENTIFY ON SCENE INCIDENT COMMANDER BY NAME AND POSITION AND ANNOUNCE "MEDICAL EMERGENCY" TO INITIATE RESPONSE FROM IMT COMMUNICATIONS/DISPATCH.

Use items one through nine to communicate situation to communications/dispatch.

1. CONTACT COMMUNICATIONS-

Ex. "Cowbell Communications, Div. Alpha. Stand-by for Priority Medical Incident Report." (If life threatening request designated frequency be cleared for emergency traffic)

2. INCIDENT STATUS: Provide incident summary and command structure.

Nature of Injury/Illness		<i>Describe the injury (Ex: Broken leg with bleeding)</i>
Incident Name		<i>Geographic Name + "Medical" (Ex: Trout Meadow Medical)</i>
Incident Commander		<i>Name of IC</i>
Patient Care		<i>Name of Care Provider (Ex: EMT Smith)</i>

3. INITIAL PATIENT ASSESSMENT: Complete this section for each patient. This is only a brief, initial assessment. Provide additional patient info after completing this 9 Line Report.

Number of Patients.	Male / Female	Age:	Weight:
Conscious? <input type="checkbox"/> YES <input type="checkbox"/> NO = MEDEVAC!			
Breathing? <input type="checkbox"/> YES <input type="checkbox"/> NO = MEDEVAC!			
Mechanism of Injury: What caused the injury?			
Lat/Long (Datum NAD83)			

4. SEVERITY OF EMERGENCY, TRANSPORT PRIORITY

SEVERITY	TRANSPORT PRIORITY
<input type="checkbox"/> URGENT-RED Life threatening injury or illness. <i>Ex. Unconscious, difficulty breathing, bleeding severely, 2° - 3° burns more than 4 palm sizes, heat stroke, disoriented.</i>	Ambulance or MEDEVAC helicopter. Evacuation need is IMMEDIATE.
<input type="checkbox"/> PRIORITY-YELLOW Serious Injury or illness. <i>Ex. Significant trauma, not able to walk, 2° - 3° burns not more than 1-2 palm sizes.</i>	Ambulance or consider air transport if at remote location. Evacuation may be DELAYED.
<input type="checkbox"/> ROUTINE-GREEN Not a life threatening injury or illness. <i>Ex. Sprains, strains, minor heat-related illness.</i>	Non-Emergency. Evacuation considered Routine of Convenience.

5. TRANSPORT PLAN:

Air Transport: (Agency Aircraft Preferred)

<input type="checkbox"/> Helispot	<input type="checkbox"/> Short-haul/Hoist	<input type="checkbox"/> Life Flight	<input type="checkbox"/> Other
-----------------------------------	---	--------------------------------------	--------------------------------

Ground Transport:

<input type="checkbox"/> Self-Extract	<input type="checkbox"/> Carry-Out	<input type="checkbox"/> Ambulance	<input type="checkbox"/> Other
---------------------------------------	------------------------------------	------------------------------------	--------------------------------

6. ADDITIONAL RESOURCE/EQUIPMENT NEEDS:

<input type="checkbox"/> Paramedic/EMT(s)	<input type="checkbox"/> Crew(s)	<input type="checkbox"/> SKED/Backboard/C-Collar
<input type="checkbox"/> Bum Sheet(s)	<input type="checkbox"/> Oxygen	<input type="checkbox"/> Trauma Bag
<input type="checkbox"/> Medication(s)	<input type="checkbox"/> IV/Fluid(s)	<input type="checkbox"/> Cardiac Monitor/AED
<input type="checkbox"/> Other (i.e. splints, rope rescue, wheeled litter)		

7. COMMUNICATIONS:

Function	Channel Name/Number	Receive (Rx)	Tone/NAC *	Transmit (Tx)	Tone/NAC *
COMMAND	CARNS Rpt Channel 1	172.4250	1035	170.1000	1035
COMMAND	OASIS Rpt Channel 2	172.4250	1035	171.6250	1035
COMMAND	CMD Channel 12	166.6125	No Tone	168.4000	110.9
AIR-TO-GRND	AG/85 Channel 10	168.3250	No Tone	168.3250	No Tone
TACTICAL					

*(NAC for digital radio system)

8. EVACUATION LOCATION:

Lat/Long (Datum NAD83) <i>EX: N 40 42.45' x W 123 03.24'</i>	
Patient's ETA to Evacuation Location:	
Helispot/Extraction Size and Hazards:	

9. CONTINGENCY:

Considerations: *If primary options fail, what actions can be implemented in conjunction with primary evacuation method? Be thinking ahead...*

REMEMBER: Confirm ETA's of resources ordered
Act according to your level of training
Be Alert. Keep Calm. Think Clearly. Act Decisively.

