



Incident Action Plan

Day Operational Period

Saturday 4/30/17

0800-2000

Cowbell Fire

FL-BCP-017033

PPKX1417 (1502)/ FFF2000000KX140

(21,840 acres, 75% contained)

MM 87

FL-FPR-170001

PRKZP317 (1502) / FFF2000000KZP30

(516 acres, 80% contained)



QR CODE
INCIDENT MAP

STOP....THINK...TALK... *THEN ACT!*

INCIDENT OBJECTIVES	1. Incident Name	2. Date Prepared 4/29/217	3. Time Prepared 1800
Cowbell Fire			

4. Operational Period
4/30/17 0800 - 2000

5. General Control Objectives For The Incident

Objectives for the Incident:

- Protection of human life is top priority through the use of sound risk management decisions that are commensurate with values at risk.
- Protect private property and infrastructure, federal facilities, critical transportation corridors, recreational and cultural resource values, T&E species and their habitat (e.g. Florida Panther, Florida bonneted bat, Red-Cockaded Woodpecker), and wilderness values through coordination with READS and following MIST Tactics on initial and extended attack fires.
- Provide opportunities to communicate and educate the public on the role of fire in the BCP and FPR ecosystems through social media and other outlets.
- Provide training opportunities for Preserve, State, and local federal fire agency personnel to actively enhance successional planning of future firefighting personnel.
- Sustain and enhance relationships with the people we serve.

Control Objectives:

- Utilize confine, contain, and point source protection strategies and tactics that commit responders only to operations where and when they can be successful.
- In order to minimize impacts to high values including Seminole and Miccosukee tribal lands, Sanctuary community, and private land within and near to the boundaries of the Big Cypress National Preserve and Florida Panther Wildlife Refuge, keep Cowbell fire:
 - West of Add 14 and Add 17
 - South of the Preserve boundary
 - North of Interstate 75
 - East of State Highway 29
- In order to minimize impacts to infrastructure and private land within and adjacent to the Florida Panther Wildlife Refuge, keep the MM87 fire:
 - West of Fakahatchee Strand.
 - North of I-75.
 - South and east of the refuge boundary.
- Provide initial attack for Big Cypress National Preserve and Florida Panther Refuge in coordination with local resources.
- Minimize impact on I-75, State Road 29 and US Highway 41 in order to avoid safety threats to the public and fire fighters.

6. Weather forecast for Period
See attached weather forecast.

7. General Safety Message

Look up, look down, look all around for hazards, recognize them and mitigate them.

8. ATTACHMENTS (X IF ATTACHED)

- | | | |
|---|------------------------------|---------------------|
| [X] Organization List - ICS 203 | [X] Medical Plan - ICS 206 | [X] Base Camp Map |
| [X] Division Assignment Lists - ICS 204 | [X] Air Ops - ICS 220 | [X] Vicinity Map |
| [X] Communications Plan - ICS 205 | [X] Incident Map | [X] Phone List |


9. Prepared By (Planning Section Chief)

Laurie Oliver PSC3

10. Approved By (Incident Commander)

Paul Varnedoe ICT3

ORGANIZATION ASSIGNMENT LIST (ICS 203)

1. Incident Name:		2. Operational Period: DAY	
COWBELL		Date/Time From: 04/30/2017 0800 SUN	Date/Time To: 04/30/2017 2000 SUN
3. Incident Commander(s) and Command Staff:		RADO/EDRC	MIRA PETERS
IC/UC	PAUL VARNEDOE BYRON HART (T)	BASE CAMP MANAGER	KYLER MCCARREL DON RUMBACK
LIAISON OFFICER	DAVID M PARKER (T)	EQUIPMENT MANAGER	JEFF COOPER (T)
SAFETY OFFICER	MARK HELM	7. Operations Section:	
INFORMATION OFFICER	MICHAEL R WILLIAMS JASON NEDLO (T)	OPS SECTION CHIEF	PAUL REYNOLDS
4. Agency/Organization Representative(s):			
Agency/Organization	Name	DIVISION/GROUP	A / D GEORGE ALLALUNIS DOUGLAS CATES (T)
BIG CYPRESS NATIONAL PRESERVE	TAMMY WHITTINGTON J.D. LEE	DIVISION/GROUP	G / K / Z JAMES WETTSTAED WILLIE ADAMS (T)
BICY CHIEF OF FIRE AND AVIATION	JORDON MCKNIGHT	DIVISION/GROUP	INITIAL ATTACK ROBERT BERTOLINA AARON EDWARDS (T)
BICY /PANTHER AFMO	BYRON HART	DIVISION/GROUP	MM87 FIRE WILLARD WORLEY
PANTHER ZONE FMO	CASS PALMER	7b. Air Operations Branch:	
COLLIER COUNTY SHERIFF	LT. JAKE WALKER	AIR OPS	RANDY J CARTER
SEMINOLE TRIBE OF FLORIDA	GRANT STEELMAN	OASIS HELIBASE MANAGER	MARK OETZMANN
FLORIDA HIGHWAY PATROL	LT. JOSEPH BOWERS	8. Finance/Administration Section:	
GREATER NAPLES FIRE RESCUE	J. NOLAN SAPP	CHIEF	MEGAN MACHT
FFS COLLIER CO. FOREST AREA SUP	TONY CURELLA	TIME UNIT	KELLY DONALDSON (T)
FFS HENDRY CO. FOREST AREA SUP	JOE LECEA	COST UNIT	LORI HISEK
5. Planning Section:			
CHIEF	MICHAEL J WILLIAMS		
DOCUMENTATION UNIT	BOB SOBCZAK		
DEMOBILIZATION UNIT	LAURIE OLIVER		
GIS SPECIALIST	MINDY WRIGHT		
TECHNOLOGY SUPPORT SPECIALIST	SCOTT BISHAW (T)		
INCIDENT METEOROLOGIST			
RESOURCE ADVISOR	BRADY DODD		
6. Logistics Section:			
CHIEF	STEVE FRICK		
GROUND SUPPORT UNIT	JERRY LYNCH		
COMMUNICATIONS UNIT	RON REGAN		
MEDICAL UNIT	CODY GILMORE SHAWN CLARK		
SECURITY UNIT	BRETT WEHRLE DANNY MOSS		
ORDERING MANAGER	TAMMIE PERNAS		
9. Prepared By:	Name: LAURIE OLIVER	Position/Title: PLANNING SECTION CHIEF	Signature: 
ICS 203	IAP Page	Date/Time: 04/29/2017 1600	



Fire Weather Forecast

FORECAST NO: 28 NAME OF FIRE: Cowbell Fire
PREDICTION FOR: Sunday Day Shift UNIT: Big Cypress National Preserve
SHIFT DATE: April 30, 2017 Incident Meteorologist: *Steven Ippoliti*
FORECAST ISSUED: 1600 April 29, 2017 954-826-9405

DISCUSSION: High pressure will continue to bring breezy conditions to the area. The wind may become gusty in the afternoon. There is a slight chance of an afternoon shower, and a less than 10% chance of a thunderstorm.

TODAY (SUNDAY DAY SHIFT):

WEATHER: Partly cloudy. Slight Chance of showers.

WIND (20 FT): East southeast 10 to 12 mph with gusts to 20 mph possible in the afternoon.

MAX TEMPERATURES: 88 to 91.

MIN RH: 44%.

Chance of measurable rain: 20% LAL: 1

DISPERSION: 70 MAX **MIXING HEIGHT:** 6000 **TRANSPORT WIND:** East southeast 20 mph

TONIGHT (SUNDAY NIGHT):

WEATHER: Becoming mostly clear.

WIND (20 FT): Light and variable.

MIN TEMPERATURES: Low 70's.

MAX RH: 96 to 99%. LVORI 9 (max). LAL: 1 Dispersion: 2 Chance measurable rain: 0%.

MONDAY:

WEATHER: Partly Cloudy to mostly cloudy. Chance of showers and a slight chance of thunderstorms.

WIND (20 FT): Southeast around 10 mph.

MAX TEMPERATURES: 88 to 91F.

MIN RH: 44%.

Chance of measurable rain: 50%. LAL: 2

DISPERSION: 55 MAX **MIXING HEIGHT:** 4500 **TRANSPORT WIND:** East southeast 15 mph.

GENERAL OUTLOOK TUESDAY THROUGH THURSDAY: A cold front is forecast to approach the area Tuesday and may stall over Central Florida before dissipating on Wednesday. Drier conditions return for Wednesday and Thursday..

WIND: Tuesday: South southeast around 5 mph Wednesday: East southeast 10 mph Thursday: East southeast 12 mph
WEATHER/TEMPERATURE: Partly to mostly cloudy with a chance of showers Tuesday. Isolated thunderstorm may also be possible. Drier, less active weather for the Wednesday and Thursday. Highs in the upper 80's to low 90's. Lows in the low 70's.

MIN RH: Tuesday: 45% Wednesday: 38% Thursday: 41%

NIGHT TIME RECOVERY: 96% to 100% each night.



Current Incident
area RAWs

Sunrise Sunday: 6:49 am

Sunset Sunday: 7:57 pm

Source: US Naval Observatory



Weather Matrix

HEALTH AND SAFETY MESSAGE

SAFETY starts with *YOU*

We are ALL accountable for SAFE behaviors

INCIDENT: Cowbell & MM 87 Fire

DATE: 04/30/2017

Major Hazards and Risks:

- ❖ **Driving** – This continues to be one of the greatest risks for serious injury. Wear safety belts, drive slower than normal, use chocks, and headlights on at all times. Ensure windshield is kept clean. Always use a spotter during backing. Forest roads are narrow, therefore drive with extreme caution. Conduct vehicle safety inspections prior to shift.
- ❖ **PPE** – Remember to wear all required PPE that applies to task you are doing.
- ❖ **Snags** – (I.A.) If you're in timber then snags will be an issue. (Use only carded fallers)
- ❖ **I.A.** Be aware of your situation follow 10's and 18's
- ❖ **Complacency** – Fight the urge to become complacent with this assignment. Most injuries occur during the last few shifts during the mop up and rehabilitation phase. Take your time with even the most menial of tasks. Watch your step to prevent a *slip, trip, or fall*. Be prepared.

Narrative:

Crew Briefing - It is absolutely essential that everyone on the fireline receives a thorough briefing. Supervisors must ensure that the briefing includes the weather, fire behavior, safety message, communications plan, medical plan, and the Special Instructions on the Division Assignment Form. Have a short tailgate session upon arriving on I.A. to make sure everyone knows their assignment.

Watch Out Situation of the Day



6. INSTRUCTIONS AND ASSIGNMENTS NOT CLEAR

Look Up, Look Down, Look Around


***Look Up:** Check the sky for any weather changes such as building or approaching thunderstorms, wind shifts or increasing in speed. Watch for air operations and water drops. Look for snags.

***Look Down:** Watch your footing. Keep an eye out for snakes, bees nests and observe fine fuels on the ground.


***Look Around** Check fuel loading in the area, general terrain, current fire behavior and ladder fuels. Keep an eye on fellow firefighters for signs of heat stress and smoke inhalation.

Safety Officer: MARK HELM

Division/Group Assignment List (ICS 204 WF)

1. Incident Name:			3.			
COWBELL			Branch:		Division/Group:	
2. Operational Period: DAY					COWBELL	
Date/Time From: 04/30/2017 0800 SUN		Date/Time To: 04/30/2017 2000 SUN				
4. Operations Personnel						
OPERATIONS CHIEF		PAUL REYNOLDS 5/5		AIR OPERATIONS		RANDY CARTER 5/13
DIVISION / GROUP SUPERVISOR		JAMES WETTSTAED 5/4 W. ADAMS 5/8 (T); D. CATES 4/30 (T)				
5. Resources Assigned this Period						
Strike Team / Task Force / Resource Designator		LWD	Leader	Number Persons	Drop Off PT./Time	Pick Up PT./Time
HC1 CREW - T1 - FLAGSTAFF IHC C-9		05/03	ANDREW M PATTERSON	20	ICP/0800	ICP/2000
HC2I CREW - T2IA - PR MA #3 C-7		05/13	ROBERTO MARTINEZ	10	ICP/0800	ICP/2000
HEQB O-225		05/04	GARY ROSE	1	ICP/0800	ICP/2000
ENG6 ENGINE - T6 - 658 E-157		05/04	RUSS MARSHALL	3	ICP/0800	ICP/2000
MASTICATOR - HENDRY GRINDING E-159		05/04	CHAD MUDGE	1	ICP/0800	ICP/2000
MAVERICK BUGGY2 E-66		05/27	MATEO / ANGELO	1	ICP/0800	ICP/2000
TRANSPORT BUGGY E-38		05/30	CLINT WEEKS	1	ICP/0800	ICP/2000
TRANSPORT BUGGY E-39		05/30	CLINTON WEEKS	1	ICP/0800	ICP/2000
SEMINOLE SUPPRESSION E-60		05/06	MIKE LIGHTSEY	1	ICP/0800	ICP/2000
EMPF O-250		05/05	CODY GILMORE	1	ICP/0800	ICP/2000
6. Control Operations/Work Assignments:						
<p>Task:</p> <ul style="list-style-type: none"> • Patrol and mop up 25 feet. from control line • Continue monitoring and using aerial support to contain slop overs on Nobles Grades. • Monitor Kissimmee Billy Strand using aerial support. • Continue to cold trail and extinguish hot spots on Kissimmee Billy Strand. • Masticate access road in Sanctuary <p>Purpose:</p> <ul style="list-style-type: none"> • To keep fire confined and contained west of ADD 17/ADD 14 on east flank of fire • To protect structures and facilitate emergency evacuation. • To alert FHP of potential impact to I-75 • Keep fire contained north of I-75 • For possible contingency line • To keep fire contained east of Kissimmee Billy Strand while minimizing fire fighter exposure. <p>End State:</p> <ul style="list-style-type: none"> • Control fire perimeter west of ADD 17/ADD 14 to eliminate threat to Sanctuary area structures • Minimize risk to public traveling on I-75 • Confine fire perimeter to reduce threats to resource values at risk 						
8. Division/Group Communication Summary						
Function	Channel	RX Frequency N/W	RX Tone/NAC	TX Frequency N/W	TX Tone/NAC	Mode
COMMAND	12	166.6125		168.4000	110.9	A
COMMAND	13	168.7000		170.9750	110.9	A
TACTICAL	4	168.6000		168.6000		A
AIR TO GROUND	10	168.3250		168.3250		A
9. Prepared By (Resource Unit Leader)		Approved By (Planning Section Chief)		Date	Time	
LAURIE OLIVER PSC3		LAURIE OLIVER 		04/29/2017	1800	

Division/Group Assignment List (ICS 204 WF)

1. Incident Name:			3.			
COWBELL			Branch:		Division/Group:	
2. Operational Period: DAY						
Date/Time From: 04/30/2017 0800 SUN		Date/Time To: 04/30/2017 2000 SUN		COWBELL		
4. Operations Personnel						
OPERATIONS CHIEF		PAUL REYNOLDS 5/5		AIR OPERATIONS		RANDY CARTER 5/13
DIVISION / GROUP SUPERVISOR		JAMES WETTSTAED 5/4 W. ADAMS 5/8 (T); D. CATES 4/30 (T)				
6. Control Operations/Work Assignments:						
7. Special Instructions:						
<p>Establish and maintain LCES during operational period. Do not engage in fire suppression activities along I-75 shoulders unless traffic hazards have been mitigated. Follow the tracked vehicle requirement restrictions.</p> <p>Utilize MIST tactics as outlined in Fire Operations Guide for BICY. Follow tracked vehicle requirement restrictions.</p>						
8. Division/Group Communication Summary						
Function	Channel	RX Frequency N/W	RX Tone/NAC	TX Frequency N/W	TX Tone/NAC	Mode
COMMAND	12	166.6125		168.4000	110.9	A
COMMAND	13	168.7000		170.9750	110.9	A
TACTICAL	4	168.6000		168.6000		A
AIR TO GROUND	10	168.3250		168.3250		A
9. Prepared By (Resource Unit Leader)			Approved By (Planning Section Chief)		Date	Time
LAURIE OLIVER PSC3			LAURIE OLIVER 		04/29/2017	1800

Division/Group Assignment List (ICS 204 WF)

1. Incident Name:			3.			
COWBELL			Branch:		Division/Group:	
2. Operational Period: DAY					MM 87 FIRE	
Date/Time From: 04/30/2017 0800 SUN			Date/Time To: 04/30/2017 2000 SUN			
4. Operations Personnel						
OPERATIONS CHIEF		PAUL REYNOLDS 5/5		AIR OPERATIONS		RANDY CLARK 5/13
DIVISION / GROUP SUPERVISOR		WILLIARD WORLEY 5/6				
5. Resources Assigned this Period						
Strike Team / Task Force / Resource Designator		LWD	Leader	Number Persons	Drop Off PT./Time	Pick Up PT./Time
ENG6 ENGINE - T6 - CSP 661 E-59		05/04	CHRIS CORRIGAN	2	ICP/0800	ICP/2000
ENG3 ENGINE - T3 - CA-SHF - 51 E-99		05/05	BRIAN BUCHNER	5	ICP/0800	ICP/2000
6. Control Operations/Work Assignments:						
<p>Task:</p> <ul style="list-style-type: none"> • Patrol and conduct mop up 25 feet from control line. <p>Purpose:</p> <ul style="list-style-type: none"> • To keep fire contained within burn unit #3. <p>End State:</p> <ul style="list-style-type: none"> • Protect human life. Minimize environment damage to protect habitat of threatened and endangered species. Minimize damage to public and private property 						
7. Special Instructions:						
<p>Establish and maintain LCES during operational period. Utilize MIST tactics as outlined in Fire Operations Guide for BICY.</p> <p>*Additional resources identified for initial attack as needed.</p>						
8. Division/Group Communication Summary						
Function	Channel	RX Frequency N/W	RX Tone/NAC	TX Frequency N/W	TX Tone/NAC	Mode
BICY RPTR	1	172.4250	1035	170.1000	1035	D
BICY RPTR	2	172.4250	1035	171.6250	1035	D
PANTHER RPTR	7	164.6250	1188	163.1500	1188	D
TACTICAL	9	166.8250		166.8250		A
AIR TO GROUND	10	168.3250		168.3250		A
9. Prepared By (Resource Unit Leader)			Approved By (Planning Section Chief)		Date	Time
LAURIE OLIVER PSC3			LAURIE OLIVER		04/29/2017	1600

Division/Group Assignment List (ICS 204 WF)

1. Incident/Name:		3.				
COWBELL		Branch:		Division/Group:		
2. Operational Period:		INITIAL ATTACK				
DAY						
Date/Time From: 04/30/2017 0800 SUN		Date/Time To: 04/30/2017 2000 SUN				
4. Operations Personnel						
OPERATIONS CHIEF		PAUL REYNOLDS 5/5		AIR OPERATIONS		RANDY CARTER 5/13
DIVISION / GROUP SUPERVISOR		ROBERT BERTOLINA 5/2 AARON EDWARDS 5/5 (T)				
5. Resources Assigned this Period						
Strike Team / Task Force / Resource Designator		LWD	Leader	Number Persons	Drop Off PT./Time	Pick Up PT./Time
TFLD O-106.4		04/30	DEVIN JOHNSON (T)	1	ICP/0800	ICP/2000
HC2I CREW - T2IA - PR MA #3 C-7		05/13	SAEZ / SHAW	11	ICP/0800	ICP/2000
HCM MODULE - SUPPRESSION - BIFZ #2 O-106		04/30	SAMUEL DE LONG	8	ICP/0800	ICP/2000
ENG6 ENGINE - T6 - CO-PSF - 7-1 E-140		05/09	JOSHUA MORRIS	3	ICP/0800	ICP/2000
BICY SUPPRESSION BUGGY #3 E-65		05/11	HEINZ / ALLEN	2	ICP/0800	ICP/2000
*BICY SWAMP BUGGY #5 E-64		05/31	SHOOK / ASHBAUGH	2	ICP/0800	ICP/2000
*DUECE BUGGY IA - 607 E-89		05/01	RICHARDS / HOLT	2	ICP/0800	ICP/2000
PANTHER FIRE BUGGY (SLIMER) E-80		05/31	MANLEY / PHIPPEN	2	ICP/0800	ICP/2000
EMPF O-249		05/05	SHAWN CLARK	1	ICP/0800	ICP/2000
6. Control Operations/Work Assignments:						
<p>Task:</p> <ul style="list-style-type: none"> • Coordinate with BICY duty officer for notification of newly reported ignitions. Coordinate initial attack action with assigned aviation and /or ground assets • Determine IA resource pre-positioning needs across BICY and FPWR • Coordinate with the Liason if possibility of smoke impact to Highway 41, Highway 29 or Interstate 75. <p>Purpose:</p> <ul style="list-style-type: none"> • Ensure timely response on any IA within BICY and FPWR <p>End State:</p> <ul style="list-style-type: none"> • Protect human life. Minimize environment damage to protect habitat of threatened and endangered species. Minimize damage to public and private property 						
7. Special Instructions:						
<p>IA will be staged at the Deep Lake staging area.</p> <p>Follow tracked vehicle requirement restrictions. Establish and maintain LCES during operational period. Utilize MIST tactics as outlined in Fire Operations Guide for BICY. All initial attack will go through BICY Fire Dispatch Center. Incident within an Incident will go through Cowbell communications.</p> <p>*E-80 & E-89 will be staged at Panther Work Center</p>						
8. Division/Group Communication Summary						
Function	Channel	RX Frequency N/W	RX Tone/NAC	TX Frequency N/W	TX Tone/NAC	Mode
BICY RPTR	1	172.4250	1035	170.1000	1035	D
BICY RPTR	2	172.4250	1035	171.6250	1035	D
PANTHER RPTR	7	164.6250	1188	163.1500	1188	D
TACTICAL	9	166.8250		166.8250		A
AIR TO GROUND	6	169.1125		169.1125		A
9. Prepared By (Resource Unit Leader)		Approved By (Planning Section Chief)		Date	Time	
LAURIE OLIVER PSC3		LAURIE OLIVER		04/29/2017	1600	

AIR OPERATIONS SUMMARY

OPERATIONAL PERIOD DATE: 04-30-2017

0800-2000

1. INCIDENT NAME: Cowbell	2. PREPARED BY: Mike Mowery	PREPARED DATE/TIME: 04/29/2017 1600	3. Sunrise: 0650 Sunset: 1956
4. REMARKS (Safety Notes, Hazards, Air Operations Special Equipment, etc.): Medivac Aircraft: N16HX MTR- Located along state road 29. Fire Dispatch gets MTR activity every morning Do not over fly structures with external load missions. All aircraft should use strobes and running lights in smoky conditions. Hazards: Snags, non-incident aircraft, and winds. Contract helicopter working special use permit in North Central portion of BICY. Area identified on pilot briefing board. ATGS has air to air communications. Cease all operations at sunset			
5. Squawk 1255 (A-20) TFR—7/7786 ZMA FL, Airspace 25 nm NE of Ochopee SFC 3000ft. Contact 118.825 NOTAM – 04/054 – Airspace firefighting aircraft 5nm of (9FL7) SFC 2000ft.			

6. PERSONNEL	Phone	7. FREQUENCIES	AM	FM	8. FIXED WING	FAA#/Base
Air Operations—Randy Carter	501-802-6708	Air/Air Rotor (A-5)	123.575		Air Attack	197GB (A-18)—Aero Commander MKY
ATGS: Mike Vanderpath ATGS (T): Trevor Pollock	208-553-3577 435-592-4919	Air/Ground Cowbell	118.825	168.3250 RX/TX (A)		
Oasis Helibase (9FL7) HEB1 Matt Clinton HEB1(T) Jay Thatcher HMGB Mel Hofman N16HX HMGB Melissa Olsen N743PH	239-695-0278 208-634-9414 970-903-7922 541-410-5025 239-431-1046	Air/Ground IA Air/Ground (A-11)		169.1125 RX/TX (A) 167.9500 RX/TX (A)		
Immokalee Airport HMGB—Tracy Elliott H-718	303-910-7619	Flight Following (BICY)		169.7250 RX N1514 163.3875 TX N1738		
Big Cypress Fire Dispatch	239-695-9280 x 104	Air/Guard		168.6250 RX/TX Tone 110.9		
		Deck		166.7750		

9. HELICOPTERS (Use Additional Sheets As Necessary)

FAA # or Designator	TY	MAKE/MODEL	BASE	START	REMARKS	FAA # or Designator	TY	MAKE/MODEL	BASE	START	REMARKS
718 (A-16)	1	CH-54	Immokalee	0900	Tanked	16HX (A-9)	2	Bell 205	Oasis	0900	Crew/Bucket
743PH (A-40)	3	Bell 407	Oasis	0800	Map/Recon						

TYPE/FUNCTION	NAME OF PERSONNEL OR CARGO (if applicable) OR INSTRUCTIONS FOR TACTICAL AIRCRAFT	MISSION START	FLY FROM	FLY TO
Mapping/Reconnaissance	As Requested	0930		
Water Drops	As Requested	0930		

INCIDENT RADIO COMMUNICATIONS PLAN (ICS 205)

3. Operational Period: DAY											
Date/Time From: 04/29/2017 0800		Date/Time To: 04/29/2017 2000									
Zone Group	Ch #	Function	Assignment	RX Freq	RX Tone/NAC	TX Freq	TX Tone/NAC	Mode (A,D, or M)	Remarks		
	1	CARNS RPT	Initial Attack	172.4250	1035	170.1000	1035	D	Preserve RPTR		
	2	OASIS RPT	Initial Attack	172.4250	1035	171.6250	1035	D	Preserve RPTR		
	3	BCY LCL		166.7750	No Tone	166.7750	No Tone	A			
	4	BICY TAC 1	Division A/D	168.6000	No Tone	168.6000	No Tone	A			
	5	BICY LCL 2	MM - 87	168.2500	No Tone	168.2500	No Tone	A			
	6	A/G 59	Initial Attack	169.1125	No Tone	169.1125	No Tone	A			
	7	Panther RPT	Initial Attack	164.6250	1188	163.1500	1188	D	Panther Refuge RPTR		
	8	PANTHER TAC 1	DIVISION G/Z/K	166.7500	No Tone	166.7500	No Tone	A			
	9	PANTHER TAC 2	Initial Attack	166.8250	No Tone	166.8250	No Tone	A			
	10	A/G 85	ALL DIVISIONS	168.3250	No Tone	168.3250	No Tone	A			
	11	Everglades TAC 1		166.7250	0659	166.7250	0659	D			
	12	CMD 12	DIVISION A/Z	166.6125	No Tone	168.4000	110.9	A	Command RPTR-Linked		
	13	CMD 13	DIVISION D/G/Z	168.7000	No Tone	170.9750	110.9	A	Command RPTR-Linked		
	14	A/G	Aerial Ignition	167.9500	No Tone	167.9500	No Tone	A			
	15	CMD 15	DIV G	173.0375	No Tone	167.3250	110.9	A	Command RPTR-Linked		
	16	AIR GUARD		168.6250	No Tone	168.6250	110.9	A			
Name: RON REGAN 772-631-2585		Signature: /s/ Mark Spann									
		Date/Time: 04/29/2017 1200									

STATE IA RADIO COMMUNICATIONS PLAN (ICS 205)

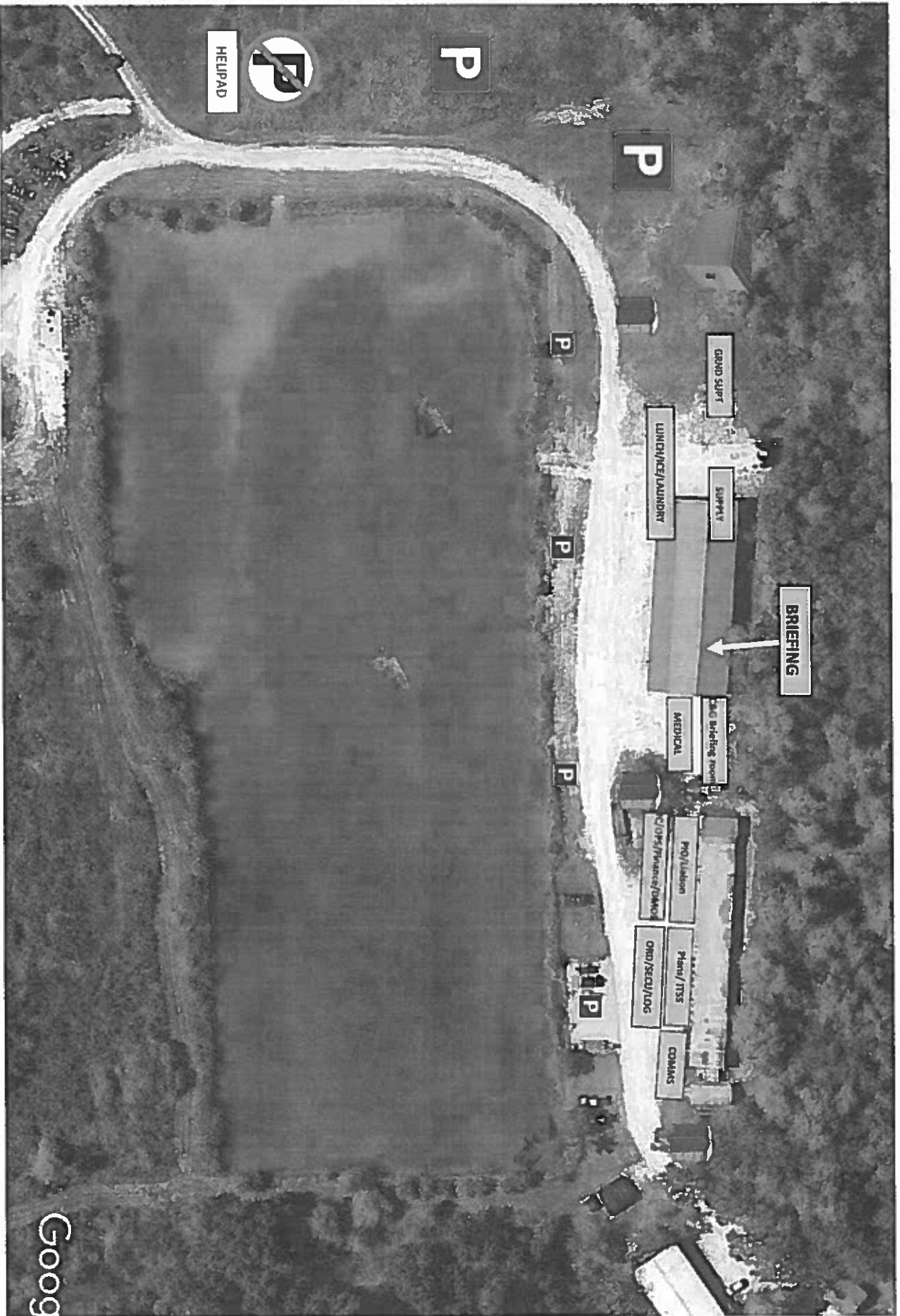
3. Operational Period: DAY											
Date/Time From: 04/29/2017 0800		Date/Time To: 04/29/2017 2000									
Zone Group	Ch #	Function	Assignment	RX Freq	RX Tone/NAC	TX Freq	TX Tone/NAC	Mode (A, D, or M)	Remarks		
	1	CARNS RPT	Initial Attack	172.4250	1035	170.1000	1035	D	Preserve RPTR		
	2	OASIS RPT	Initial Attack	172.4250	1035	171.6250	1035	D	Preserve RPTR		
	3	BCY LCL		166.7750	No Tone	166.7750	No Tone	A			
	4	BICY TAC 1	Division A /D	168.6000	No Tone	168.6000	No Tone	A			
	5	BICY LCL 2	MM - 87	168.2500	No Tone	168.2500	No Tone	A			
	6	A/G 59	Initial Attack	169.1125	No Tone	169.1125	No Tone	A			
	7	Panther RPT	Initial Attack	164.6250	1188	163.1500	1188	D	Panther Refuge RPTR		
	8	PANTHER TAC 1	DIVISION G/K/Z	166.7500	No Tone	166.7500	No Tone	A			
	9	PANTHER TAC 2	Initial Attack	166.8250	No Tone	166.8250	No Tone	A			
	10	A/G 85	ALL DIVISIONS	168.3250	No Tone	168.3250	No Tone	A			
	11	Everglades TAC 1		166.7250	0659	166.7250	0659	D			
	12	RED V22	STATE IA	154.2650	No Tone	154.2650	156.7	A			
	13	WHITE V21	STATE IA	154.2800	No Tone	154.2800	156.7	A			
	14	BLUE V23	STATE IA	154.2950	No Tone	154.2950	156.7	A			
	15	CMD 15	DIV G	173.0375	No Tone	167.3250	110.9	A	Command RPTR-Linked		
	16	AIR GUARD		168.6250	No Tone	168.6250	110.9	A			
Name: RON REGAN 772-631-2585				Signature: /s/ RON REGAN							
				Date/Time: 04/26/2017 1800							

MEDICAL PLAN (ICS 206)

1. Incident Name: Cowbell Fire		2. Operational Period: Date: 04-30-17 Time From: 0800 Time To: 2000					
3. Medical Aid Stations:							
Name	Location	Contact Number(s)/Frequency	Paramedics on Site?				
Cody Gilmore (EMPF)/ Shawn Clark (EMPF)	As assigned daily	918-703-9103/918-770-5029	<input checked="" type="checkbox"/> Yes	<input type="checkbox"/> No			
4. Transportation (indicate air or ground):							
Ambulance Service	Location	Number(s)/Frequency	Level of Service				
Collier County EMS (ground)	Everglades City (Medic 61)	911	<input checked="" type="checkbox"/> ALS	<input type="checkbox"/> BLS			
Collier County Med-Flight (air)	Naples Airport	911	<input checked="" type="checkbox"/> ALS	<input type="checkbox"/> BLS			
6HX Bell 205 (air) medical evacuation	Oasis Heli-base	168.3250 (A/G 85)	<input type="checkbox"/> ALS	<input checked="" type="checkbox"/> BLS			
Miami Dade Fire Rescue air hoist	Miami	911	<input type="checkbox"/> ALS	<input checked="" type="checkbox"/> BLS			
5. Hospitals:							
Hospital Name	Address	Contact Number(s)	Travel Time		Trauma Center	Burn Center	Helipad
			Air	Ground			
Physicians Regional Collier Blvd	8300 Collier Blvd. Naples, FL 34114 Lat:26°6.313'/Long: -81°41.106'	239-354-6000 (Main) 239-354-6190 (ER)	15	50	<input type="checkbox"/> Yes Level: _____	<input type="checkbox"/> Yes <input checked="" type="checkbox"/> No	<input checked="" type="checkbox"/> Yes <input type="checkbox"/> No
Physicians Regional Pine Ridge	6101 Pine Ridge Road, Naples 34119 Lat:26°12.833'/Long: -81°43.954'	239-348-4000 (Main) 239-304-4748 (ER)	15	50	<input type="checkbox"/> Yes Level: _____	<input type="checkbox"/> Yes <input checked="" type="checkbox"/> No	<input checked="" type="checkbox"/> Yes <input type="checkbox"/> No
Naples Community Hospital	350 7 th Street North, Naples 34102 Lat:26°9.046'/Long: -81°47.907'	239-513-7709 (Main) 239-436-5151 (ER)	15	60	<input checked="" type="checkbox"/> Yes Level: <u>2</u>	<input type="checkbox"/> Yes <input checked="" type="checkbox"/> No	<input checked="" type="checkbox"/> Yes <input type="checkbox"/> No
Jackson Memorial Hospital	1611 NW 12 Avenue, Miami Lat:25°47.508'/Long: -80°12.756'	305-585-1111 (Main) 305-585-6910 (ER)	20	60	<input checked="" type="checkbox"/> Yes Level: <u>1</u>	<input checked="" type="checkbox"/> Yes <input type="checkbox"/> No	<input checked="" type="checkbox"/> Yes <input type="checkbox"/> No
Kendal Regional Medical Center	11750 SW 40 th St., Miami 33175 Lat:25°43.916'/Long: -80°23.148'	305-223-3000 (Main) 305-227-5544 (ER)	20	50	<input checked="" type="checkbox"/> Yes Level: <u>1</u>	<input type="checkbox"/> Yes <input checked="" type="checkbox"/> No	<input checked="" type="checkbox"/> Yes <input type="checkbox"/> No
EPN Urgent Care Center	6400 Davis Boulevard Suite 103, Naples, 34104	239-775-2300 (Main)		29	No	No	No
6. Special Medical Emergency Procedures:							
<ul style="list-style-type: none"> • Patient or nearest responder notifies Group Supervisor who will respond to the scene and become the "incident within an incident" (IWI) commander. • Group Supervisor will notify nearest medical responder and ICP-Communications of the incident and "Nine Line" report attached to the back of this IAP or page 108 of the IRPG. • EPN Urgent Care Center is for non-Life threatening medical care, can only be reached by ground transport. Hours: Mon – Sat 0800-1900; Sunday 0800-1600 							
7. Prepared by (MEDL): Matthew Moran (T)/ Shanna Ellis Signature: <i>/s/ Matthew Moran Shanna F. Ellis</i>							
8. Approved by (SOF1): Brian Beisel Signature: <i>/s/ Brian Beisel</i>							
ICS 206	IAP Page _____	Date/Time: 04/29/2017					

PHONE LIST - COWBELL FIRE as of 4/26/2017

Position	Name	Phone Number	Position	Name	Phone Number
COMMAND			OPERATIONS		
Incident Commander T3	Paul Varnedoe	423-650-2184	Ops Section Chief	Paul Reynolds	662-418-9743
Incident Commander (T)	Byron Hart	850-264-9567	Division A/D	George Allalunis	575-252-3293
Liaison Officer	David Parker	910-546-6202	Division A/D (T)	Douglas Cates	541-760-5651
Public Information	Michael R Williams	470-599-3926	Division G/K/Z	James Wettstaed	770-530-3950
Public Information (T)	Jason Nedlo	606-309-9072	Division G/K/Z (T)	Willie Adams	404-909-2757
Safety Officer	Mark Helm	559-905-6554	Division Initial Attack	Robert Bertolina	760-914-7021
			Division Initial Attack (T)	Aaron Edwards	850-631-1608
			Division MM 87 Fire	Willard Worley	423-539-4310
PLANNING					
Plans Section Chief	Michael J Williams	828-835-0094			
Plans Section Chief/DMOB	Laurie Oliver	970-759-9611	AIR OPERATIONS		
Documentation Unit	Bob Sobczak	239-340-0200	Air Ops Branch Director (T)	Randy Carter	501-802-6708
Meteorologist	Steven Ippoliti	954-826-9405	Oasis Helibase Manager	Mark Oetzmann	208-315-5030
Technology Support T)	Scott Bishaw	239-595-9143			
GISS	Mindy Wright	239-450-2462	LOGISTICS		
READ	Brady Dodd	828-620-3176	Chief	Steve Frick	218-821-6271
			Ground Support Unit Leader	Jerry Lynch	936-572-4852
FINANCE			Communications	Ron Regan	828-772-8514
Chief	Megan Macht	970-749-9734	Ordering Manager	Tammie Pernas	305-915-5060
Time Unit Leader	Kelly Donaldson	580-236-9339	Base Camp Manager	Kyler McCarrel	970-261-8046
Procurement	Leslie Solberg	360-553-9830	Medical Unit Leader	Shawn Clark	918-770-5029
			Medical Unit Leader	Cody Gilmore	918-703-9103
			RADO/EDRC	Mira Peters	335-271-8908
			Security Unit	Brett Wehrley	318-305-0640
Big Cypress National Preserve	Duty Officer	239-719-0241			



COWBELL FIRE ICP

81°30'W

81°20'W

81°10'W

81°0'W

80°50'W

26°30'N

26°20'N

26°10'N

26°0'N

25°50'N

25°40'N

26°30'N

26°20'N

26°10'N

26°0'N

25°50'N

25°40'N

↑
Immokalee

Cowbell Fire



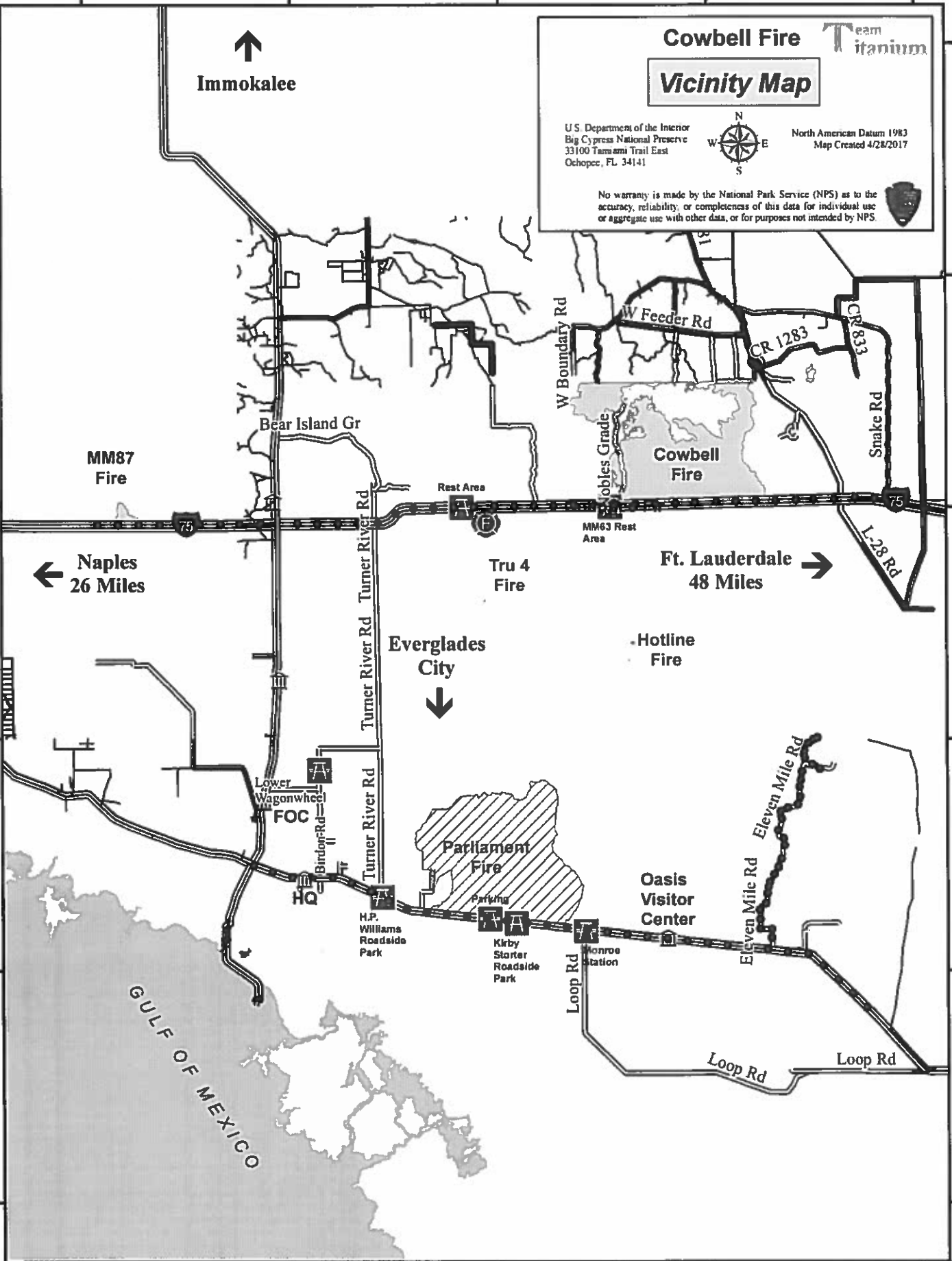
Vicinity Map

U.S. Department of the Interior
Big Cypress National Preserve
33100 Tamiami Trail East
Ochopee, FL 34141



North American Datum 1983
Map Created 4/28/2017

No warranty is made by the National Park Service (NPS) as to the accuracy, reliability, or completeness of this data for individual use or aggregate use with other data, or for purposes not intended by NPS



MM87 Fire

← Naples 26 Miles

Tru 4 Fire

Ft. Lauderdale 48 Miles →

Everglades City ↓

Hotline Fire

Parliament Fire

Oasis Visitor Center

GULF OF MEXICO

81°30'W

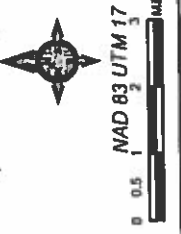
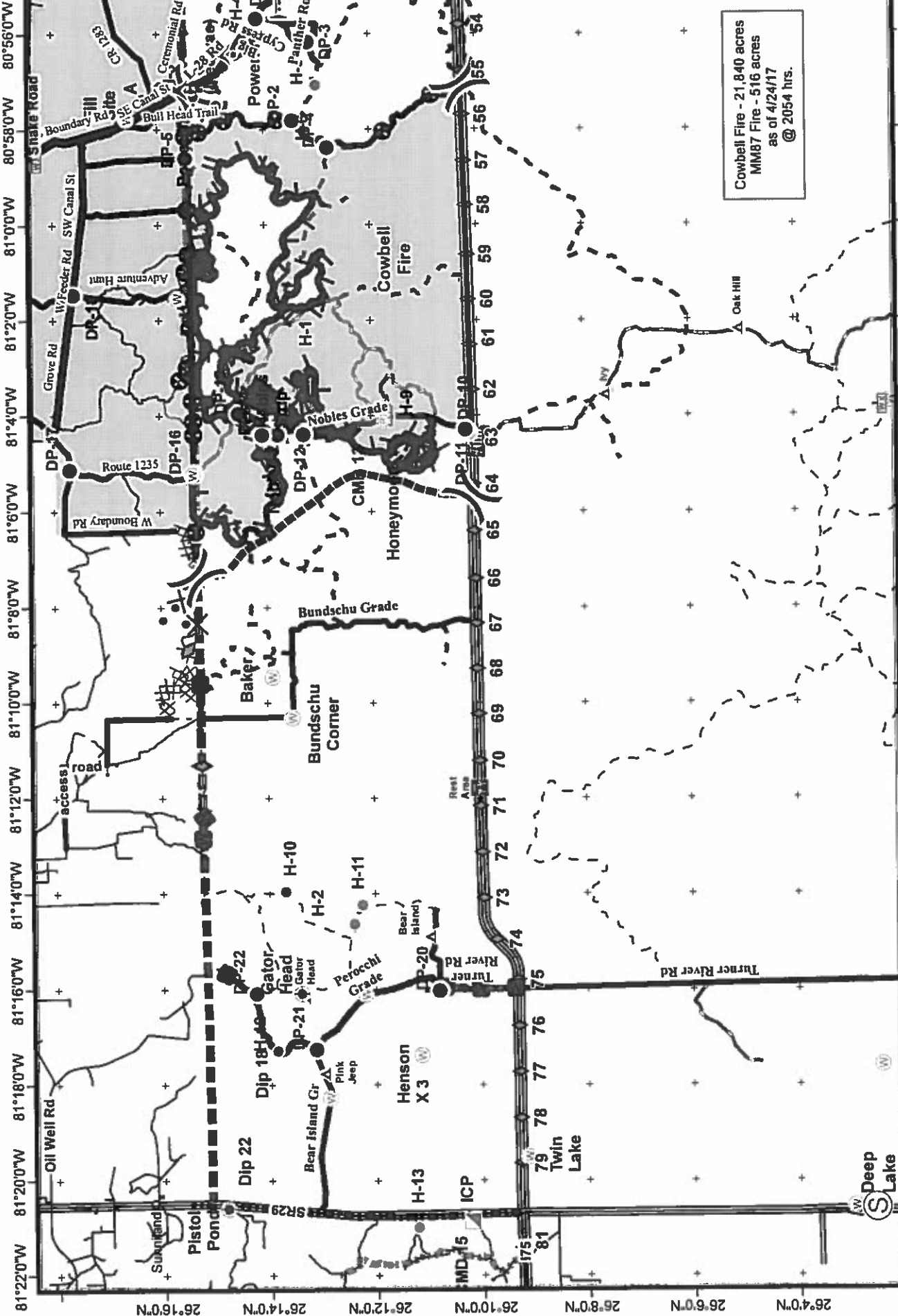
81°20'W

81°10'W

81°0'W

80°50'W

26°4'0"N 26°6'0"N 26°8'0"N 26°10'0"N 26°12'0"N 26°14'0"N 26°16'0"N 26°18'0"N



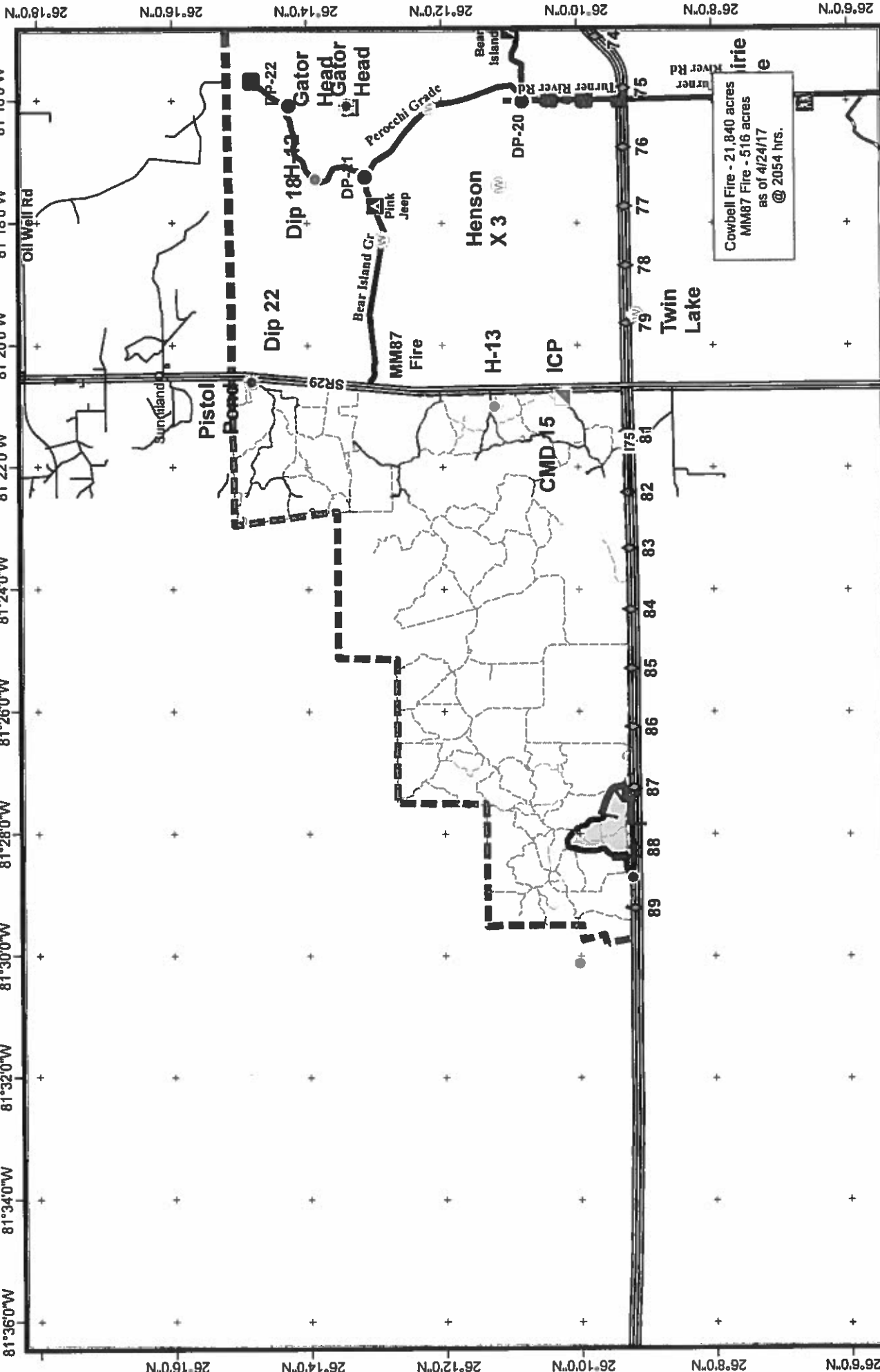
- Incident Command Post
- Rain Gauge
- Uncontrolled Fire Edge
- Helibase
- Completed Line
- Drop Point
- Repeater
- Masticalion Line
- Completed Disk Line
- Proposed Line
- Helispot
- Division
- Mobile Weather
- Aerial Hazard
- Private Structures
- NFS Property
- Bridge Locations
- Improved Road
- Primary Buggy Trail

Cowbell Fire
FL-BCP-017033

IAP Map
3 Day IAP
Cowbell



81°22'0"W 81°20'0"W 81°18'0"W 81°16'0"W 81°14'0"W 81°12'0"W 81°10'0"W 81°8'0"W 81°6'0"W 81°4'0"W 81°2'0"W 81°0'0"W 80°58'0"W 80°56'0"W



Cowbell Fire - 21,840 acres
 MM87 Fire - 516 acres
 as of 4/24/17
 @ 2054 hrs.



NAD 83 UTM 17
 0 0.5 1 2
 Miles

- Dip Site
- Draw Point
- No Impact
- Incident Command Post
- Reservoir
- Water Source
- MMR Special Use Road
- Uncontrolled Fire Edge
- Completed Line
- Preferred Mitigation Line
- MMR Road
- Road
- Oil Well Rd
- Wellbore Only Fire Perimeter
- City
- Campground
- Other
- Threshold
- Ula Marker
- CR 29 SR 28
- I-75
- Improved Road
- Water
- Florida Thru
- Florida Panther NWR
- BCY preserve

Cowbell Fire
 FL-BCP-017033

IAP Map
 3 Day IAP
 MM87

Team Titanium

Medical Incident Report- "9 Line"

FOR ALL MEDICAL EMERGENCIES: IDENTIFY ON SCENE INCIDENT COMMANDER BY NAME AND POSITION AND ANNOUNCE "MEDICAL EMERGENCY" TO INITIATE RESPONSE FROM IMT COMMUNICATIONS/DISPATCH.

Use items one through nine to communicate situation to communications/dispatch.

1. CONTACT COMMUNICATIONS-

Ex: "Cowbell Communications, Div. Alpha. Stand-by for Priority Medical Incident Report." (If life threatening request designated frequency be cleared for emergency traffic.)

2. INCIDENT STATUS: Provide incident summary and command structure.

Nature of Injury/Illness		Describe the injury (Ex: Broken leg with bleeding)
Incident Name		Geographic Name + "Medical" (Ex: Trout Meadow Medical)
Incident Commander		Name of IC
Patient Care		Name of Care Provider (Ex: EMT Smith)

3. INITIAL PATIENT ASSESSMENT: Complete this section for each patient. This is only a brief, initial assessment. Provide additional patient info after completing this 9 Line Report.

Number of Patients:	Male / Female	Age:	Weight:
Conscious? <input type="checkbox"/> YES <input type="checkbox"/> NO = MEDEVAC!			
Breathing? <input type="checkbox"/> YES <input type="checkbox"/> NO = MEDEVAC!			
Mechanism of Injury: What caused the injury?			
Lat/Long (Datum NAD83)			

4. SEVERITY OF EMERGENCY, TRANSPORT PRIORITY

SEVERITY	TRANSPORT PRIORITY
<input type="checkbox"/> URGENT-RED Life threatening injury or illness. <i>Ex: Unconscious, difficulty breathing, bleeding severely, 2^o - 3^o burns more than 4 palm sizes, heat stroke, disoriented.</i>	Ambulance or MEDEVAC helicopter. Evacuation need is IMMEDIATE.
<input type="checkbox"/> PRIORITY-YELLOW Serious Injury or Illness. <i>Ex: Significant trauma, not able to walk, 2^o - 3^o burns not more than 1-2 palm sizes.</i>	Ambulance or consider air transport if at remote location. Evacuation may be DELAYED.
<input type="checkbox"/> ROUTINE-GREEN Not a life threatening injury or illness. <i>Ex: Sprains, strains, minor heat-related illness.</i>	Non-Emergency. Evacuation considered Routine of Convenience.

5. TRANSPORT PLAN:

Air Transport: (Agency Aircraft Preferred)

- Helispot Short-haul/Hoist Life Flight Other

Ground Transport:

- Self-Extract Carry-Out Ambulance Other

6. ADDITIONAL RESOURCE/EQUIPMENT NEEDS:

- | | | |
|--|--------------------------------------|--|
| <input type="checkbox"/> Paramedic/EMT(s) | <input type="checkbox"/> Crew(s) | <input type="checkbox"/> SKED/Backboard/C-Collar |
| <input type="checkbox"/> Burn Sheet(s) | <input type="checkbox"/> Oxygen | <input type="checkbox"/> Trauma Bag |
| <input type="checkbox"/> Medication(s) | <input type="checkbox"/> IV/Fluid(s) | <input type="checkbox"/> Cardiac Monitor/AED |
| <input type="checkbox"/> Other (i.e. splints, rope rescue, wheeled litter) | | |

7. COMMUNICATIONS:

Function	Channel Name/Number	Receive (Rx)	Tone/NAC *	Transmit (Tx)	Tone/NAC *
COMMAND	CARNS Rpt Channel 1	172.4250	1035	170.1000	1035
COMMAND	OASIS Rpt Channel 2	172.4250	1035	171.8250	1035
COMMAND	CMD Channel 12	166.6125	No Tone	168.4000	110.9
AIR-TO-GRND	AG/85 Channel 10	168.3250	No Tone	168.3250	No Tone
TACTICAL					

*(NAC for digital radio system)

8. EVACUATION LOCATION:

Lat/Long (Datum NAD83) <i>EX: N 40 42.45' x W 123 03.24'</i>	
Patient's ETA to Evacuation Location:	
Helispot/Extraction Size and Hazards:	

9. CONTINGENCY:

Considerations: If primary options fail, what actions can be implemented in conjunction with primary evacuation method? Be thinking ahead...

REMEMBER: Confirm ETA's of resources ordered
Act according to your level of training
Be Alert. Keep Calm. Think Clearly. Act Decisively.

