

Incident Action Plan



3. SAFETY ZONES AND ESCAPE ROUTES
NOT IDENTIFIED

Day Operational Period

Tuesday

4/11/17

0800-2000

Cowbell Fire

FL-BCP-017033

PPKX14 (1502)



INCIDENT OBJECTIVES	1. Incident Name Cowbell Fire	2. Date Prepared 4/10/17	3. Time Prepared 1700									
4. Operational Period 4/11/17 0800 - 2000												
5. General Control Objectives For The Incident <u>Objectives for the Incident:</u> <ul style="list-style-type: none"> • Protection of human life is top priority through the use of sound risk management decisions. • Protect private property and infrastructure, federal facilities, critical transportation corridors, recreational and cultural resource values, T&E species and their habitat (e.g. Florida Panther, Florida bonneted bat, Red-Cockaded Woodpecker), and wilderness values through coordination with READS and following MIST Tactics on current and all initial and extended attack fires. • Provide opportunities to communicate and educate the public on the role of fire in the BCP and FPR ecosystems through social media and other outlets. • Provide training opportunities for Preserve, State, and local federal fire agency personnel to actively enhance successional planning of future firefighting personnel. • Provide initial attack for Big Cypress National Preserve and Florida Panther Refuge. 												
<u>Control Objectives:</u> <ul style="list-style-type: none"> • Keep fire: <ul style="list-style-type: none"> ○ West of Add 14 and Add 17 on the eastern side ○ South of the Preserve boundary on the northern side ○ North of Interstate 75 on the south side ○ East of State Highway 29 on the west side • To minimize impacts to high values including Seminole and Miccosukee tribal lands, Sanctuary community, and private land within and near to the boundaries of the Big Cypress National Preserve and Florida Panther Wildlife Refuge. • Minimize smoke impacts on I-75, State Road 29 and US Highway 41 in order to avoid safety threats to the public. • Utilize confine, contain, and point source protection strategies and tactics that commit responders only to operations where and when they can be successful and under conditions where important values actually at risk are protected with the least exposure necessary while sustaining relationships with the people we serve. 												
6. Weather forecast for Period High pressure will remain over the Atlantic waters Northeast of Florida this week. East to Northeast winds will keep temperatures and RH outside of any critical levels. Brief spotty showers will be possible in the mornings.												
7. General Safety Message Look up, look down, look all around for hazards, recognize them and mitigate them.												
8. ATTACHMENTS (X IF ATTACHED) <table style="width: 100%; border: none;"> <tr> <td style="width: 33%;">[X] Organization List - ICS 203</td> <td style="width: 33%;">[X] Medical Plan - ICS 206</td> <td style="width: 33%;">[] _____</td> </tr> <tr> <td>[X] Division Assignment Lists - ICS 204</td> <td>[X] Incident Map</td> <td>[] _____</td> </tr> <tr> <td>[X] Communications Plan - ICS 205</td> <td>[X] Traffic Plan</td> <td>[] _____</td> </tr> </table>				[X] Organization List - ICS 203	[X] Medical Plan - ICS 206	[] _____	[X] Division Assignment Lists - ICS 204	[X] Incident Map	[] _____	[X] Communications Plan - ICS 205	[X] Traffic Plan	[] _____
[X] Organization List - ICS 203	[X] Medical Plan - ICS 206	[] _____										
[X] Division Assignment Lists - ICS 204	[X] Incident Map	[] _____										
[X] Communications Plan - ICS 205	[X] Traffic Plan	[] _____										
9. Prepared By (Planning Section Chief) /s/ Dave Berens / Dave Dobbs	10. Approved By (Incident Commander) /s/ Marty Bentley											

ORGANIZATION ASSIGNMENT LIST		9.	Operations Section	
1. Incident Name COWBELL FIRE		Lead Operations	Greg Brooks	
		Planning Operations	Steve Weaver, Paul Varnedoe (t)	
		Field Operations	Robert Trincado, Mike Davis (t)	
2. Date 04/10/17		3. Time 1700		
4. Operational Period 04/11/17 DAY (0800 – 2000)		a.	Divisions/Groups	
5. Incident Commander and Staff		Division	A	Chad Cook, Heath Thomas (t)
Incident Commander	Steve Parrish, Lance Elmore (t)	Division	D	Mary Owen/Chris Richards (t)
Deputy Incident Commander	Marty Bentley, Debbie Beard (t)	Division	G	Chuck Alluisi/ Mike Honeycutt (t)
Liaison Officer	Mike Wright, Pam Martin (t)	Division	Z	Tom Crews
Safety Officer	Buddy Kelley, Mark Sullivan, Ken Gordon (t)	Division	Initial Attack	Chris Croddy
Information Officer	Susan Blake, Michelle Burnett, Donald Simon (t)	Division	Parliament & Misc Fires	UNSTAFFED
		Group	Structure Protection	Ryan Vice
6. Agency Reps				
Agency Administrator	Tammy Whittington (Big Cypress)			
Agency Administrator	J.D. Lee (Big Cypress)			
Chief of Fire & Aviation	Jordan McNight (Big Cypress)			
AFMO	Byron Hart (BICY/Panther)			
Zone FMO	Cass Palmer (Panther)			
Collier Co. Sheriff	Lt. Jake Walker	b.	Air Operations Branch	
Seminole Tribe of Florida	Grant Steelman			
Florida Highway Patrol	Lt. Joseph Bowers	Air Operation Branch Director	Mike Rock	
Greater Naples Fire Rescue	J. Nolan Sapp			
FFS Collier Co Forest Area Sup	Tony Curella			
FFS Hendry Co Forest Area Sup	Joe Lecea			
7. Planning Section		Air Support Group Supervisor	Pete Kubiak/Mike O'Leary (t)	
Chief	Dave Berens, Dave Dobbs	Air Tactical Group Supervisor	Ken McLaughlin	
Resources Unit	Melone Sellers, E.J. Bunzendahl (t) Jessica Hollingsworth (t)	Helibase Manager	Matt Clinton	
Situation Unit	Jeff DeMatteis, Carol O'Bryan (t)			
FBAN	Gary Jarvis, Brenda Dale (t), Kelly Cagle (t)	8. Logistics Section		
Air Resource Advisor	Andrea Holland	Chief	Willie Boston, Tom Phillips (t)	
READ	Phil Wilson, Wylie Paxton	Deputy	Jerry Jussila, Susan Cornett	
IMET	John Pendergrast	Supply Unit	Tom Piper	
Geo. Info. Spec.	Chris Evans, Melanie Hans, Jeff Adams (t)	Facilities Unit	Glen Bee	
Demob Unit	Thomas Barrett	Ground Support	Michael Howarth/Peter Lashoto	
Status Check-In	Jeff Turner	Equipment Manager		
Training	John Davis	Ordering Manager	Sherri Kite	
ITSS	Jerry Dronberger, Rusty Brown, Nikita Carty (t)	Receiving & Distrib. Mgr.	Chris Combs/Jonathan Lampley (t)	
Documentation	Bob Sobczak (t)	Base Camp Manager	Mike Justus	
10. Finance Section		Communications Unit	George Rosenthal, Ron Regan	
Chief	Wanda Kelley, Holly Cyprian (t)	Incident Communication Mgr.		
Time Unit	Laura Wilson, Sherise Foster (t)	Rado	Mark Pomponio, Federico Avakian, Brian Gieryk, Scott Brownlow	
Equipment Time Unit	Donna Line (t)	Medical Unit Leader	Gene-Paul Matson, James Fortner (t)	
Cost Unit	Carolyn Hughes, Janice Lowe (t)	Security Manager	Sasha Herrin, RJ Seehase (t)	
Comp/Claims	Terri McDonald, David Easter(t)	Security	Brian Phillips	
Procurement	Leslie Solberg			
Personnel Time Recorder	Gustavo Vallejo (t)			
Prepared by (RESL) /s/ Melonie Sellers / EJ Bunzendahl (t)/Jessica Hollingsworth (t)				



Fire Weather Forecast

FORECAST NO: 9
PREDICTION FOR: Tuesday Day Shift
SHIFT DATE: April 11, 2017
FORECAST ISSUED: 1900 April 10, 2017

NAME OF FIRE: Cowbell Fire
UNIT: Big Cypress National Preserve
Incident Meteorologist: *John Pendergrast*
240-499-6649

DISCUSSION: High pressure will remain over the Atlantic waters Northeast of Florida this week. East to Northeast winds will keep temperatures and RH outside of any critical levels. Brief spotty showers will be possible in the mornings.

TODAY (TUESDAY DAY SHIFT):

WEATHER: Partly cloudy with areas of morning smoke and haze. Isolated showers.
WIND (20 FT): Northeast 5 to 10 mph becoming East 10 to 15 mph in the afternoon.
MAX TEMPERATURES: 83 to 86.
MIN RH: 44%.
LAL: 1 Chance measurable rain: 10%
DISPERSION: 55 MAX MIXING HEIGHT 5500 TRANSPORT WINDS: East 15 to 20 mph.

TONIGHT (TUESDAY NIGHT):

WEATHER: Partly cloudy. Areas of smoke accumulating near fires late. Light Northeast wind.
WIND (20 FT): East 5 to 10 mph in the evening. Becoming Northeast 1-2 mph overnight.
MIN TEMPERATURES: 58 to 62F.
MAX RH: 100%. LVORI 7 (max).
LAL: 1 Chance measurable rain: 10%.

WEDNESDAY:

WEATHER: Partly cloudy with patchy morning fog and smoke. Isolated morning showers.
WIND (20 FT): Northeast 5 to 10 mph early increasing to 10 to 15 mph in the afternoon.
MAX TEMPERATURES: 83 to 86F.
MIN RH: 43%.
LAL: 1 Chance measurable rain: 10%.
DISPERSION: 55 MAX MIXING HEIGHT 5400 TRANSPORT WINDS Northeast 15 to 20 mph.

GENERAL OUTLOOK THURSDAY TO SATURDAY: High Pressure over Atlantic Ocean will weaken some past midweek. Local winds will remain East to Northeast with no critical fire weather conditions expected. A slight chance of showers and storms is expected mainly west of the fire area.

WINDS: Thursday through Saturday: Northeast to East 5 to 10 mph increasing to 10 to 15 mph.
WEATHER/TEMPERATURE: Partly cloudy with a slight chance of showers Thursday and Friday. Lows in the Low 60s. Highs in the Mid 80s.
MIN RH: 45 to 50 percent each day.
NIGHT TIME RECOVERY: 95 to 100 percent each night.



Current Incident
area RAWs
conditions

Sunrise Tuesday: 7:07 am
Sunset Tuesday: 7:47 pm

Source: US Naval Observatory

FIRE BEHAVIOR FORECAST	
FORECAST NUMBER: #09	TYPE OF FIRE: Wildland
FIRE NAME: Cowbell	OPERATIONAL PERIOD: 04/11/2017
DATE ISSUED: 04/10/2017	TIME ISSUED: 2000
UNIT: Big Cypress Preserve	WRITTEN :Kelly Cagle SIGNED: Gary Jarvis FBAN 251.288.1084
FUEL ASSUMPTIONS:	
Primary fuels consist of grass, shrub, and pine overstory with shrub palmetto understory and timber litter. Current fuel conditions are favorable for very active fire behavior within the grass and shrub fuels. The current drought conditions have led to both live and dead fuel moistures to reach levels of concern. Expect all fuels to burn readily, including those that appear green.	
The fuel moisture for today is:	
Calculated 1 hr fuel 7%, 10 hr fuel 7%, 100 hr fuel 15%, 1000 hr fuel 16%	
ERC levels above 97th Percentile	
Critical fire behavior thresholds: 1 HR Fuel Moisture <6%, RHs below 40% and a Dispersion Index greater than 60.	
WEATHER: Partly cloudy with areas of morning smoke or haze. Chance of an isolated shower.	
WIND (20 FT): Northeast 5 to 10 mph becoming East 10 to 15 mph in the afternoon.	
MAX TEMPERATURES: 83 to 86.	
MIN RH: 44%.	
LAL: 1 Chance measurable rain: 10%	
DISPERSION: 55 MAX MIXING HEIGHT 5500 TRANSPORT WINDS: East 15 to 20 mph.	
General Fire Behavior Forecast... Potential for large fire growth...	
Expect to have another very active fire behavior day. Significant consumption of heavies, snags and duff. Intense burning with torching and spotting of up to ½ mile should be anticipated.	
Specific:	
Cowbell: The fire will continue to move in a westerly direction. Expect fire to become active before noon and burn very intense throughout the burn period. High rates of spread and long range spotting should be expected. Smoke on I-75 could become an issue.	
Parliament and Greenup – The fires will continue to smolder and creep around in receptive fuel along perimeter or other green pockets until adequate rainfall is received. Smoke from the Parliament Fire could become an issue on HWY 41.	
Initial Attack: Heavy resistance can be expected on any new starts in all fuel types. Expect rapid rates of spread, especially in the grass models and anticipate some spotting to challenge your control efforts.	
PREDICTIONS FOR MOST ACTIVE TIME OF PEAK BURNING PERIOD USING WEATHER FROM INCIDENT IMET	
Fuel Model	Fire Behavior
Grass	ROS 30 to 50 ch/hr (.3 to .6 mph), FL 7-10 ft.
Shrub	ROS 18 to 27 ch/hr, (.2 to .3 mph) FL 6-12 ft
Timber Litter (Cypress)	ROS 6 to 10 ch/hr (.1 mph), FL 3-4 ft
Spotting	.2 miles grass and .4 miles torching pine or palm trees
Probability of Ignition	50% in all models
AIR OPERATIONS: High probability of morning fog/smoke and light-moderate inversion could hinder air operations in the morning.	
FIRE BEHAVIOR SAFETY: Be aware that these fires are producing very high BTU's. Firefighters in recent days have noted that heat experienced while working on or near fire lines is higher than usual.	

Division/Group Assignment List (ICS 204 WF)

1. Incident Name:			3.			
Cowbell Fire			Branch:		Division/Group	
2. Operational Period:			A			
Date/Time From: 04/11/17 0800	Date/Time To: 04/11/17 2000					
4. Operations Personnel						
AIR ATTACK SUPERVISOR			FIELD OPERATIONS		Robert Trincado Mike Davis (t)	
DIVISION/GROUP SUPERVISOR	Chad Cook Heath Thomas (t)		PLANNING OPERATIONS		Steve Weaver Paul Varnedoe (t)	
5. Resources Assigned this Period						
Strike Team / Task Force / Resource Designator	LWD	Leader	Number Persons	Drop Off PT./Time	Pick Up PT./Time	
TFLD	O-144	4/24	Willard Worley	1	ICP/0800 ICP/2000	
MOD Great Smoky	O-102	4/11	Josh Nicholas	5	ICP/0800 ICP/2000	
Slimer Suppression Buggy	E-80	4/15	Matt Mateo	3	ICP/0800 ICP/2000	
Seminole Suppression Buggy	E-60	4/13	Mike Lightsey	2	ICP/0800 ICP/2000	
BICY Suppression Buggy #2	E-64	4/15	Justin Phippen	2	ICP/0800 ICP/2000	
BICY Suppression Buggy #3	E-65	4/15	Megan Hurrell	1	ICP/0800 ICP/2000	
Transport Buggy	E-38	4/15	Captain Steve-Wesley Mossen	1	ICP/0800 ICP/2000	
Transport Buggy	E-39	4/15	Captain Steve-Clinton Weaks	1	ICP/0800 ICP/2000	
Transport Buggy	E-40	4/15	Captain Steve	1	ICP/0800 ICP/2000	
Transport Buggy	E-41	4/15	Captain Steve-Timmy Stiltner	1	ICP/0800 ICP/2000	
SOFR	O-89	4/19	John Foley	1	ICP/0800 ICP/2000	
EMTP	O-36	4/18	Frank Abel	1	ICP/0800 ICP/2000	
6. Control Operations/Work Assignments:						
Task:						
<ul style="list-style-type: none"> Patrol and conduct mop up, as appropriate Conduct strategic firing operations along ADD14 coordinating with DIV D Minimize smoke impacts to I-75 through appropriate firing techniques 						
Purpose:						
<ul style="list-style-type: none"> To keep fire confined and contained west of ADD 17/ADD 14 on east flank of fire To protect structures 						
End State:						
<ul style="list-style-type: none"> Control fire perimeter west of ADD 17/ADD 14 to eliminate threat to Sanctuary area structures 						
7. Special Instructions: Follow tracked vehicle requirement restrictions. Establish and maintain LCES during operational period. Comms trailer Phone (772) 631-2573. Coordinate with Field OPS in the event swing shift resources are required.						
8. Division/Group Communication Summary						
Function	Channel	RX Frequency N/W	RXTone/NAC	TX Frequency N/W	TX Tone/NAC	Mode
COMMAND	12	166.6125		168.4000	110.9	A
TACTICAL	4	168.6000		168.6000		A
AIR TO GROUND	10	168.3250		168.3250		A
9. Prepared By (Resource Unit Leader)			Approved By (Planning Section Chief)			Date
/s/Melonie Sellers/EJ Bunzendahl (t) /Jessica Hollingsworth (t)			Dave Berens/Dave Dobbs			04/10/17
						Time
						16:00

Division/Group Assignment List (ICS 204 WF)

1. Incident Name:		3.				
Cowbell Fire		Branch:	Division/Group			
2. Operational Period:			D			
Date/Time From: 04/11/17 0800	Date/Time To: 04/11/17 2000					
4. Operations Personnel						
AIR ATTACK SUPERVISOR		FIELD OPERATIONS	Robert Trincado Mike Davis (t)			
DIVISION/GROUP SUPERVISOR	Mary Owen O-96 Chris Richards (t)	PLANNING OPERATIONS	Steve Weaver Paul Varnedoe (t)			
5. Resources Assigned this Period						
Strike Team / Task Force / Resource Designator	LWD	Leader	Number Persons	Drop Off PT./Time	Pick Up PT./Time	
No Resources Assigned						
6. Control Operations/Work Assignments:						
Task: <ul style="list-style-type: none"> Ensure communications with FHP regarding potential smoke impacts prior to ignitions Conduct strategic firing operations with DIV A and DIV G using aerial ignition along I-75 as needed Purpose: <ul style="list-style-type: none"> To alert FHP of potential impact to I-75 Keep fire contained north of I-75 End State: <ul style="list-style-type: none"> Minimize risk to public traveling on I-75 Confine fire perimeter to reduce threats to resource values at risk 						
7. Special Instructions: Establish and maintain LCES during operational period. Comms trailer Phone (772) 631-2573.						
8. Division/Group Communication Summary						
Function	Channel	RX Frequency N/W	RXTone/NAC	TX Frequency N/W	TX Tone/NAC	Mode
COMMAND	13	168.7000		170.9750	110.9	A
TACTICAL	8	166.7500		166.7500		A
AIR TO GROUND	10	168.3250		168.3250		A
9. Prepared By (Resource Unit Leader)		Approved By (Planning Section Chief)		Date	Time	
/s/Melonie Sellers/EJ Bunzendahl (t) /Jessica Hollingsworth (t)		Dave Berens/Dave Dobbs		04/10/17	16:00	

Division/Group Assignment List (ICS 204 WF)

1. Incident Name:				3.			
Cowbell Fire				Branch:		Division/Group	
2. Operational Period:				G			
Date/Time From: 04/11/17 0800		Date/Time To: 04/11/17 2000					
4. Operations Personnel							
AIR ATTACK SUPERVISOR				FIELD OPERATIONS		Robert Trincado Mike Davis (t)	
DIVISION/GROUP SUPERVISOR		Chuck Alluisi Mike Honeycutt (t)		PLANNING OPERATIONS		Steve Weaver Paul Varnedoe (t)	
5. Resources Assigned this Period							
Strike Team / Task Force / Resource Designator		LWD	Leader		Number Persons	Drop Off PT./Time	Pick Up PT./Time
HC1 Asheville Mod A C--6		4/13	George Hulbert		9	ICP/0800	ICP/2000
ENG3 #321 E-98		4/19	Kenneth Vaughn		5	ICP/0800	ICP/2000
ENG3 #51 E-99		4/19	Mike Anderson		5	ICP/0800	ICP/2000
ENG3 #335 E-100		4/19	Zach McGarr		5	ICP/0800	ICP/2000
ENG 6 Firetrax E-86		4/19	Carlos Gutierrez		3	ICP/0800	ICP/2000
ENG 6 Wildlands Fire Service E-87		4/19	Brian Terry		3	ICP/0800	ICP/2000
SOFR O-63		4/19	David Dallison		1	ICP/0800	ICP/2000
READ O-33		4/18	Phil Wilson		1	ICP/0800	ICP/2000
FOBS O-24		4/19	Gabe Gamino		1	ICP/0800	ICP/2000
FOBS (t) O-84		Local	Mindy Wright		1	ICP/0800	ICP/2000
EMTF O-17		4/15	Jim Stout		1	ICP/0800	ICP/2000
6. Control Operations/Work Assignments:							
Task:							
<ul style="list-style-type: none"> Conduct strategic firing operations on Turner River Rd. north of I-75 tying into Perocchi Grade and continuing north to property boundary as appropriate Coordinate firing with DIV D along I-75 as needed Coordinate with Florida Forest Service with line preparation along northern boundary tying into DIV Z 							
Purpose:							
<ul style="list-style-type: none"> To keep fire contained east of Turner River Rd and Perocchi Grade and south of property boundary 							
End State:							
<ul style="list-style-type: none"> Confine fire perimeter to reduce threats to resource values at risk 							
7. Special Instructions: Establish and maintain LCES during operational period. Coordinate with Florida Forest Service Representatives Tony Curella and Joe Lecea. Establish communications with Florida Forest Service Equipment Operators. Utilize MIST tactics as outlined in Fire Operations Guide for BICY. Comms trailer Phone (772) 631-2573. Follow tracked vehicle requirement restriction.							
8. Division/Group Communication Summary							
Function	Channel	RX Frequency N/W	RXTone/NAC	TX Frequency N/W	TX Tone/NAC	Mode	
COMMAND	13	168.7000		170.9750	110.9	A	
TACTICAL	5	168.2500		168.2500		A	
AIR TO GROUND	10	168.3250		168.3250		A	
9. Prepared By (Resource Unit Leader)			Approved By (Planning Section Chief)			Date	Time
/s/Melonie Sellers/EJ Bunzendahl (t) /Jessica Hollingsworth (t)			Dave Berens/Dave Dobbs			04/10/17	16:00

Division/Group Assignment List (ICS 204 WF)

1. Incident Name:			3.					
Cowbell Fire			Branch:		Division/Group			
2. Operational Period:					Z			
Date/Time From: 04/11/17 0800		Date/Time To: 04/11/17 2000						
4. Operations Personnel								
AIR ATTACK SUPERVISOR				FIELD OPERATIONS		Robert Trincado Mike Davis (t)		
DIVISION/GROUP SUPERVISOR		Tom Crews		PLANNING OPERATIONS		Steve Weaver Paul Varnedoe (t)		
5. Resources Assigned this Period								
Strike Team / Task Force / Resource Designator		LWD	Leader		Number Persons	Drop Off PT./Time	Pick Up PT./Time	
HC1 Asheville Mod B		C-6	4/13	J.D. Hill		9	ICP/0800	ICP/2000
MOD Buffalo		O-21	4/16	Josh Hampton		6	ICP/0800	ICP/2000
Masticator		E-6	4/17	Mike Joel		1	ICP/0800	ICP/2000
Masticator GEO-BOY		E-83	4/25	Rob Shackelford		1	ICP/0800	ICP/2000
HEQB		O-124	4/24	Jesse Barr		1	ICP/0800	ICP/2000
HEQB		O-25	4/16	Eric Moore		1	ICP/0800	ICP/2000
EMTF		O-15	4/16	Matt Lancaster		1	ICP/0800	ICP/2000
6. Control Operations/Work Assignments:								
Task:								
<ul style="list-style-type: none"> • Patrol and conduct mop up, as appropriate • Improve the northern boundary line for future strategic firing operations 								
Purpose:								
<ul style="list-style-type: none"> • To keep fire south of Preserve Boundary and west of ADD 17 to protect private land with structures 								
End State:								
<ul style="list-style-type: none"> • Control fire perimeter south and east of ADD 17 to eliminate threat to Seminole Tribe of Florida and Ceremonial Area 								
7. Special Instructions: Establish and maintain LCES during operational period. Follow tracked vehicle restriction requirements. Utilize MIST tactics as outlined in Fire Operations Guide for BICY. Comms trailer Phone (772) 631-2573.								
8. Division/Group Communication Summary								
Function	Channel	RX Frequency N/W	RXTone/NAC	TX Frequency N/W	TX Tone/NAC	Mode		
COMMAND	12	166.6125		168.4000	110.9	A		
TACTICAL	8	166.7500		166.7500		A		
AIR TO GROUND	10	168.3250		168.3250		A		
9. Prepared By (Resource Unit Leader)			Approved By (Planning Section Chief)			Date	Time	
/s/Melonie Sellers/EJ Bunzendahl (t) /Jessica Hollingsworth (t)			Dave Berens/Dave Dobbs			04/10/17	16:00	

Division/Group Assignment List (ICS 204 WF)

1. Incident Name:			3.				
Cowbell Fire			Branch:		Division/Group		
2. Operational Period:			IA				
Date/Time From: 04/11/17 0800	Date/Time To: 04/11/17 2000						
4. Operations Personnel							
AIR ATTACK SUPERVISOR				FIELD OPERATIONS		Robert Trincado Mike Davis (t)	
DIVISION/GROUP SUPERVISOR		Kris Croddy		PLANNING OPERATIONS		Steve Weaver Paul Varnedoe (t)	
5. Resources Assigned this Period							
Strike Team / Task Force / Resource Designator		LWD	Leader		Number Persons	Drop Off PT./Time	Pick Up PT./Time
TFLD **	O-60	4/19	Harold Kibbe		1	ICP/0800	ICP/2000
TFLD	O-61	4/19	Mario Marquez		1	ICP/0800	ICP/2000
MOD EE	O-67	4/18	Matt Britt		8	ICP/0800	ICP/2000
ENG6 Big Thickett **	E-57	4/19	Gus Schaefer		2	ICP/0800	ICP/2000
ENG6 K31 **	E-7	4/15	Steven Staples		2	ICP/0800	ICP/2000
ENG6 Attack One	E-58	4/19	Kevin Carter		2	ICP/0800	ICP/2000
ENG6 CSP661	E-59	4/20	Jason Johnson		2	ICP/0800	ICP/2000
Duece Buggy IA #607	E-89	4/09	James Ray **		3	ICP/0800	ICP/2000
Suppression Buggy #6	E-68	4/22	Conner Boudin		2	ICP/0800	ICP/2000
Suppression Buggy # 1	E-129	4/23	Chris Dargan		1	ICP/0800	ICP/2000
EMTF	O-18	4/15	Bob Bruington		1	ICP/0800	ICP/2000
6. Control Operations/Work Assignments:							
Task:							
<ul style="list-style-type: none"> • Coordinate with BICY duty officer for notification of newly reported ignitions • Coordinate initial attack action with assigned aviation and /or ground assets • Determine IA resource prepositioning needs across BICY and FPWR 							
Purpose:							
<ul style="list-style-type: none"> • Ensure communications with FL Hwy Patrol regarding smoke on I-75 • Ensure timely response on any IA within BICY and FPWR 							
End State:							
<ul style="list-style-type: none"> • Protect human life • Minimize environment damage to protect habitat of threatened and endangered species • Minimize damage to public and private property 							
7. Special Instructions: **Resources identified for swing shift if needed. Coordinate with Field OPS to determine need. Set up structure protection at ICP as directed by Operations. Follow tracked vehicle requirement restrictions. Establish and maintain LCES during operational period. Utilize MIST tactics as outlined in Fire Operations Guide for BICY. Comms trailer Phone (772) 631-2573							
8. Division/Group Communication Summary							
Function	Channel	RX Frequency N/W	RX Tone/NAC	TX Frequency N/W	TX Tone/NAC	Mode	
COMMAND	1	172.4250	1035	170.1000	1035	D	
COMMAND	2	172.4250	1035	171.6250	1035	D	
COMMAND	7	164.6250	1188	163.1500	1188	D	
TACTICAL	9	166.8250		166.8250		A	
AIR TO GROUND	6	169.1125		169.1125		A	
9. Prepared By (Resource Unit Leader)			Approved By (Planning Section Chief)			Date	Time
/s/Melonie Sellers/EJ Bunzendahl (t) /Jessica Hollingsworth (t)			Dave Berens/Dave Dobbs			04/10/17	16:00

Division/Group Assignment List (ICS 204 WF)

1. Incident Name:		3.				
Cowbell Fire		Branch:	Division/Group Parliament/ Misc. Fire Patrol			
2. Operational Period:						
Date/Time From: 04/11/17 0800	Date/Time To: 04/11/17 2000					
4. Operations Personnel						
AIR ATTACK SUPERVISOR		FIELD OPERATIONS	Robert Trincado Mike Davis (t)			
DIVISION/GROUP SUPERVISOR		PLANNING OPERATIONS	Steve Weaver Paul Varnedoe (t)			
5. Resources Assigned this Period						
Strike Team / Task Force / Resource Designator	LWD	Leader	Number Persons	Drop Off PT./Time	Pick Up PT./Time	
unstaffed						
6. Control Operations/Work Assignments:						
Task:						
<ul style="list-style-type: none"> Patrol and monitor fires on BICY and FPWR with aviation and ground assets as directed by lead OSC commensurate with values at risk Monitor fires for further suppression management action 						
Purpose:						
<ul style="list-style-type: none"> Assure suppression action taken limits environmental impact, consistent with MIST tactics 						
End State:						
<ul style="list-style-type: none"> Protect human life Minimize damage to public and private property Minimize environmental damage to protect habitat of threatened and endangered species 						
7. Special Instructions: Follow tracked vehicle requirement restrictions. Establish and maintain LCES during operational period.						
Utilize MIST tactics as outlined in Fire Operations Guide for BICY. Comms trailer Phone (772) 631-2573. Review Updated Medical Plan.						
8. Division/Group Communication Summary						
Function	Channel	RX Frequency N/W	RXTone/NAC	TX Frequency N/W	TX Tone/NAC	Mode
COMMAND	7	164.6250	1188	163.1500	1188	D
TACTICAL	11	166.7250	0659	166.7250	0659	D
AIR TO GROUND	10	168.3250		168.3250		A
9. Prepared By (Resource Unit Leader)		Approved By (Planning Section Chief)		Date	Time	
/s/Melonie Sellers/EJ Bunzendahl (t) /Jessica Hollingsworth (t)		Dave Berens/Dave Dobbs		04/10/17	16:00	

Division/Group Assignment List (ICS 204 WF)

1. Incident Name:			3.				
Cowbell Fire			Branch:		Division/Group Structure Protection Group		
2. Operational Period:							
Date/Time From: 04/11/17 0800		Date/Time To: 04/11/17 2000					
4. Operations Personnel							
AIR ATTACK SUPERVISOR				FIELD OPERATIONS		Robert Trincado Mike Davis (t)	
DIVISION/GROUP SUPERVISOR		Ryan Vice		PLANNING OPERATIONS		Steve Weaver Paul Varnedoe (t)	
5. Resources Assigned this Period							
Strike Team / Task Force / Resource Designator		LWD	Leader		Number Persons	Drop Off PT./Time	Pick Up PT./Time
STPS	O-4.62	4/16	Glenn Phillips		1	ICP/0800	ICP/2000
TFLD	O-106.1	4/16	Wes Richardson		1	ICP/0800	ICP/2000
TFLD (t)	O-106.3	4/16	Darren Gunn		1	ICP/0800	ICP/2000
MOD BIFZ #2	O-106	4/16	Brett Morefield		8	ICP/0800	ICP/2000
ENG6 WFS	E-8	4/16	Dave Sechrist		3	ICP/0800	ICP/2000
ENG6 WFS	E-9	4/16	Saul Irvin		3	ICP/0800	ICP/2000
ENG6 Attack One	E-10	4/16	Wes Coleman		2	ICP/0800	ICP/2000
SOFR	O-38	4/16	Joe Fowler		1	ICP/0800	ICP/2000
FOBS	O-22	4/16	Ron Rockis		1	ICP/0800	ICP/2000
FOBS	O-23	4/18	Luke Hurley		1	ICP/0800	ICP/2000
EMTF	O-16	4/15	Tracey Milakovic		1	ICP/0800	ICP/2000
6. Control Operations/Work Assignments:							
Task:							
<ul style="list-style-type: none"> • Affirm contact procedures with Collier County EMS and Sheriff Dept. to assure smooth communication in event of community evacuation needs • Assure protection plan is in place and ready to implement; pumps are ready and evacuation plan in place • Coordinate with landowners to determine special considerations and road or trail access 							
Purpose:							
<ul style="list-style-type: none"> • Ensure timely response to protect human life, property and access 							
End State:							
<ul style="list-style-type: none"> • Maintain communications with appropriate county emergency management and law enforcement agencies to complete timely evacuations 							
7. Special Instructions: Establish and maintain LCES during operational period. Comms trailer Phone (772) 631-2573.							
8. Division/Group Communication Summary							
Function	Channel	RX Frequency N/W	RXTone/NAC	TX Frequency N/W	TX Tone/NAC	Mode	
COMMAND	13	168.7000		170.9750	110.9	A	
COMMAND	12	166.6125		168.4000	110.9	A	
TACTICAL	11	166.7250	0659	166.7250	0659	D	
AIR TO GROUND	10	168.3250		168.3250		A	
9. Prepared By (Resource Unit Leader)		Approved By (Planning Section Chief)			Date	Time	
/s/Melonie Sellers/EJ Bunzendahl (t) /Jessica Hollingsworth (t)		Dave Berens/Dave Dobbs			04/10/17	16:00	

AIR OPERATIONS SUMMARY

OPERATIONAL PERIOD DATE: 04-11-2017

0900-2000

1. INCIDENT NAME: Cowbell	2. PREPARED BY: Mike Rock	PREPARED DATE/TIME: 04/10/2017 1730	3. Sunrise: 0707 Sunset: 1947
4. REMARKS (Safety Notes, Hazards, Air Operations Special Equipment,, etc.): Medivac Aircraft: 6HX MTR- Located along state road 29.Fire Dispatch gets MTR activity every morning Do not over fly structures with external load missions. All aircraft should use strobes and running lights in smoky conditions. Hazards: Snags, non-incident aircraft, and winds. Contract helicopter working special use permit in North Central portion of BICY. Area identified on pilot briefing board. ATGS has air to air communications.			5. Squawk 1255 TFR—7/7786 ZMA FL, Airspace 25 nm NE of Ochopee SFC 3000ft. NOTAM – 04/054 – Airspace firefighting aircraft 5nm of (9FL7) SFC 2000ft.

6. PERSONNEL	Phone	7. FREQUENCIES	AM	FM	8. FIXEDWING	Base
AOBD: Mike Rock ASGS: Pete Kubiak ASGS(T) Mike O’Leary	606-813-9750 404-661-4819 239-336-9789	Air/Air Rotor	123.575		Air Attack- Air Attack	197GB – Aero Commander MKY 4566M Baron MKY
ATGS: Ken McLaughlin ATGS – James Gresham	813-997-0317 208-660-4139	Air/Air Fixed Wing	118.825		T-801 T-493	Seat –IMM, Start 0900 Seat —IMM, Start 0900
<u>Oasis Helibase (9FL7)</u> HEB1 Matt Clinton <u>Immokalee Airport</u> Seat Manager – Jack Benzilio HEB2 Connie Fox HMGB – Tracy Elliott	239-695-0278 208-634-9414 970-799-1232 303-854-8470 303-910-7619	Air/Ground Cowbell		168.3250 RX/TX (A) 169.1125 RX/TX (A) 167.9500 RX/TX (A)		
		Flight Following (BICY)		169.7250 RX N1514 163.3875 TX N1738		
Big Cypress Fire Dispatch	239-695-9280 x 104	Air/Guard Deck		168.6250 RX/TX Tone 110.9 166.7750		

9. HELICOPTERS (Use Additional Sheets As Necessary)

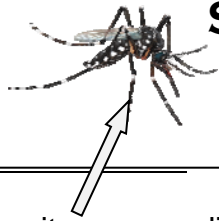
FAA N# or Designator	TY	MAKE/MODEL	BASE	START	REMARKS	FAA N# or Designator	TY	MAKE/MODEL	BASE	START	REMARKS
206RW	3	Bell 206	Oasis	0900	Park Helicopter	1KA	1	K-MAX	Oasis	0900	Bucket
0HH	3	Bell 206	Oasis/RON-Miami	0900	Recon / Bucket	612CK	1	S-61	IMM	0900	Tanked
5HQ	2	Bell 205++	Oasis	0900	Crew/ Bucket	718	1	CH-54	IMM	0900	Tanked
6HX	2	Bell 205	Oasis	0900	Crew/Bucket	28HX	2	205A1	Oasis	0900	Crew / Bucket

10. TASK/MISSION/ASSIGNMENT (Use ICS-220a if additional space needed; Type/Function includes: Air Tactical, Retardant, Recon, Personnel Transport, Water Dropping, etc.)

TYPE/FUNCTION	NAME OF PERSONNEL OR CARGO (if applicable) OR INSTRUCTIONS FOR TACTICAL AIRCRAFT	MISSION START	FLY FROM	FLY TO
Mapping	As Requested	0930		
Reconnaissance	As Requested	0930		
Water Drops	As Requested	0930		

SAFETY MESSAGE

Incident: Cowbell Fire	Date 4/11/17	Time: 0800 - 2000
-------------------------------	--------------	-------------------



SAFETY IS EVERYONE'S CONCERN!!
TRUE / FALSE



"Everyone should get this one"

Mosquitoes carry diseases so use repellent.

Snake bite

Snake bite! Follow the nine line protocol in IAP

Yellow fly bite can lead to infection



Some tips to help prevent a critter encounter:

1. Wear gloves and look before you work
2. Use **insect repellent** around pant legs and on sleeves, rolled down
3. Flag identified areas where fire ants are
4. Never mess with **snakes**
5. Don't feed the **gators**

THE CRITTER THAT YOU ALL NEED TO BE AWARE OF THE MOST WILL JUMP ON YOUR BACK WHEN YOU LEAST EXPECT IT.

IT IS CALLED BY MANY COMMON NAMES:

PANIC

APATHY

FATIGUE

SCIENTIFIC NAME = CARELESSNESS MISTAKE-US

IT IS YOU, IF YOU DON'T THINK SAFETY.

THINK SAFETY



RESPONSIBILITY

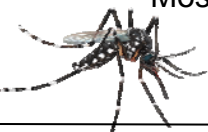
- ▣@ THE RESPONSIBILITY FOR SAFETY IS DISTRIBUTED ACROSS ALL MEMBERS.
- ▣@THE SAFETY CULTURE SHOULD ENCOURAGE PEOPLE TO THINK RATHER THAN JUST OBEY PRE-ORDAINED RULES.
- ▣@ EACH POSITION INCLUDING THE INDIVIDUAL FIREFIGHTER, SHOULD KNOW HOW TO MAINTAIN GOOD SITUATIONAL AWARENESS



Fire ant mound



Mosquito



Incident Safety Officers:

Ken Gordon (T), Mark Sullivan, Buddy Kelley, Joe Fowler, David Dallison & John Foley

Incident Safety Analysis 215a

Cowbell & Initial Attack

Tuesday April 11, 2017

8. Location	9. Hazard	6. Control or Abatement Action (Engineering, Administrative, PPE, Avoidance, Education, etc)
DIVS ALL / IA	Helicopter Operations	<ul style="list-style-type: none"> ~ Stay clear of all bucket drops when suppression actions are in place and allow 1 minute prior to re-entry. ~ Ensure communications are established with firefighters before conducting bucket drops. ~ Monitor Air-Ground AG communications. ~ Follow aviation safety guidelines in IRPG and IHOG.
DIVS ALL / IA	Extreme Fire Behavior	<ul style="list-style-type: none"> ~ Share weather observations with all personnel assigned to division. ~ Establish "Trigger Points" to withdraw. ~ Use "Risk Management" process prior to engaging in suppression actions, refer to page 1, IRPG.
DIVS ALL / IA	Hazard Trees	<ul style="list-style-type: none"> ~ Avoid cutting Hazard Trees, unless they are an obvious Safety Hazard to crews in the vicinity (Reference the "Big Cypress National Preserve - Wildfire Incident Resource Protection Plan") ~ Follow "Hazard Tree Safety" guidelines, IRPG page 22. ~ Post lookouts, or use a spotter in mop-up areas. ~ Don't park vehicles or take breaks around hazard trees. ~ Establish trigger points for disengagement during high wind events. ~ Remember that the hazard zone extends a minimum of 2 1/2 tree heights.
DIVS ALL / IA	Injury & Medical Emergency	<ul style="list-style-type: none"> ~ For Medical Incident, follow the 9 line procedures. ~ For "air hoist capability" or "snake bite treatment" contact Radio call sign '784' to request assistance. ~ Assist injured employee with appropriate medical care. ~ Use EMT's on Division for initial care. ~ Follow medical protocol as outlined in ICS-206 & IRPG Pgs. 99-108
DIVS ALL / IA	Driving & Traffic	<ul style="list-style-type: none"> ~ Practice "Defensive Driving" techniques traveling on all roads and city streets. ~ Do not drive by helicopters dipping out of canal on the L - 28 road. ~ Use spotters when backing ~ Keep clutter off dash and inside cab. ~ Follow Driving LCES (Lights, Chock blocks, Emergency brake, Seat belts. ~ Always use headlights when on dusty roads. ~ Yield to pedestrians and bicycles. ~ Observe posted speed limits. ~ Use the 3 second rule for following distance when driving. ~ Avoid distractions (eating, cell phones, radio). ~ Ensure that windshields are kept clean of dust and bugs.
DIVS A & Z	Structure Protection & HAZMAT	<ul style="list-style-type: none"> ~ Review Watch outs, IRPG page 12. Do Not commit to stay and protect a structure if trigger points are reached. ~ Use "Structure Assessment" checklist, IRPG pages 12-16. ~ No safety zones are present, set trigger point to safe retreat. ~ Patrol after passage of the fire front when safe. ~ Follow "HAZMAT on pages 34-36 in IRPG.
DIVS All / IA	Swamp Buggy	<ul style="list-style-type: none"> ~ Ensure equipment is inspected and safe to use ~ Restrict Buggy use to established trails ~ Ensure operator is trained and certified to operate ~ Ensure operator has proper PPE ~ Passengers wear hardhats & use 3 points of contact when loading or unloading ~ Secure all seating so that it is stable and does not move
DIVS ALL / IA	Communications	<ul style="list-style-type: none"> ~ Maintain communication with aviation resources, and suppression organization. ~ Ensure all know frequency and protocol for contacting resources. ~ Utilize the ICS 205.~ Utilize human repeaters when working in dead spots. ~ Do not engage if communications cannot be established.

Incident Safety Analysis 215a

Cowbell & Initial Attack

Tuesday April 11, 2017

DIVS ALL / IA	Chain Saw Operations	<ul style="list-style-type: none"> ~ Follow "Hazard Tree Safety" guidelines, IRPG page 22 ~ Look up, Look down, Look around for hazard tree indicators. ~ Only fell and buck trees within your qualifications, and training. ~ Follow "Procedural Felling Operations" on page 79 in IRPG. ~ Do not fall trees during high wind events. ~ Ensure proper use of all required PPE.
DIVS ALL / IA	Firing Operations & Devices	<ul style="list-style-type: none"> ~ Only personnel trained in the use of each device will be authorized to use firing equipment. ~ Ensure all personnel are aware of firing operations that may affect them and coordinate with adjoining divisions. ~ Wear appropriate PPE. ~ Ensure aerial/ground ignition plans have been adequately developed and personnel are briefed. ~ Stay clear of bucket drops when pretreating fuels with air operations. ~ Ensure that communications are established with helicopters if pretreating fuels.
DIVS ALL / IA	Unburned Area/Reburn Potential	<ul style="list-style-type: none"> ~ Monitor weather. ~ Base actions upon observed and predicted fire behavior. ~ LCES Checklist (IRPG pg. 6). ~ Look Up, Down and Around (IRPG pg. 2-3).
DIVS ALL / IA	Fatigue & Over Exertion	<ul style="list-style-type: none"> ~ Drink 1 quart of water each hour during and after work. ~ Rotate crews out of smoky areas. ~ Set a reasonable work pace and allow adequate rest breaks while on the project. ~ Use buddy system to monitor personnel of heat related and fatigue issues. ~ Follow work / rest guidelines.
DIVS A / Z / G	Heavy Equipment Operations	<ul style="list-style-type: none"> ~ Ensure communications are established with operators. ~ Use hand signals if other communications are unavailable. ~ Maintain a 100'- 200' exclusion area around equipment and increase it to 1 1/2 times tree height when in timber. ~ Use a spotter when backing.
DIVS ALL / IA	Wildlife	<ul style="list-style-type: none"> ~ Watch out for wildlife such as alligators, bear, deer, panthers, snakes. ~ Do not feed, handle or taunt wildlife. ~ Maintain safe distance and avoid contact ~Discard trash (food and containers) in proper disposal sites. ~ Secure pump location sites, watch for alligators, snakes and other wildlife.
DIVS ALL / IA	Firefighter & Public Smoke Exposure	<ul style="list-style-type: none"> ~ Identify homes and structures with private parties remaining behind the evacuation. ~ Identify personnel responsible for contacting private parties. ~ Use warning lights and provide traffic control on roadways during smoky and night operations. ~ Rotate crews out of smoky areas during firing and mop-up operations. ~ Contact Communications when firing operations are initiated.
DIVS ALL / IA	UTV use	<ul style="list-style-type: none"> ~ Ensure equipment is inspected and safe to use. ~ Restrict ATV/UTV use to established trails ~ Ensure operator is trained and certified to operate. ~ Ensure operator has proper PPE according to the Redbook and/or RMA. ~ Question if it is mission critical.
DIVS ALL / IA	Unplanned Public Interaction	<ul style="list-style-type: none"> ~ Be alert to non-fire personnel. ~ All non-fire personnel will be escorted while on fireline. ~ Post lookouts to in areas with public to avoid conflicts with mission tasks. ~ Ensure sufficient security to restrict access to exclusion area.

MEDICAL PLAN (ICS 206)

1. Incident Name: Cowbell Fire		2. Operational Period: Date From: 04-11-17 Date To: 04-11-17 Time From: 0800 Time To: 2000					
3. Medical Aid Stations:							
Name	Location	Contact Number(s)/Frequency	Paramedics on Site?				
Gene-Paul Matson EMTF, MEDL	Medical ICP	434-665-0444	<input checked="" type="checkbox"/> Yes	<input type="checkbox"/> No			
James Fortner EMTF, MEDL T	Medical ICP	202-236-3139	<input type="checkbox"/> Yes	<input checked="" type="checkbox"/> No			
Tracy Milakovic	Structure Protection Group	719-850-0022	<input type="checkbox"/> Yes	<input checked="" type="checkbox"/> No			
Frank Abel	Division A	423-595-1578	<input checked="" type="checkbox"/> Yes	<input type="checkbox"/> No			
Jim Stout	Division G	480-296-1566	<input checked="" type="checkbox"/> Yes	<input type="checkbox"/> No			
Bob Bruington	IA	801-782-3585	<input type="checkbox"/> Yes	<input checked="" type="checkbox"/> No			
Matt Lancaster	Division Z	303-870-5248	<input type="checkbox"/> Yes	<input checked="" type="checkbox"/> No			
4. Transportation (indicate air or ground):							
Ambulance Service	Location	Contact Number(s)/Frequency	Level of Service				
Collier County EMS (ground)	Everglades City (Medic 61)	911	<input checked="" type="checkbox"/> ALS	<input type="checkbox"/> BLS			
Collier County Med-Flight (air)	Naples Airport	911	<input checked="" type="checkbox"/> ALS	<input type="checkbox"/> BLS			
6HX Bell 205 (air) medical evacuation	Oasis Heli-base	168.3250 (A/G 85)	<input type="checkbox"/> ALS	<input checked="" type="checkbox"/> BLS			
5. Hospitals:							
Hospital Name	Address	Contact Number(s)	Travel Time		Trauma Center	Burn Center	Helipad
			Air	Ground			
Physicians Regional Collier Blvd	8300 Collier Blvd. Naples, FL 34114 Lat:26°6.313'/Long: -81°41.106'	239-354-6000 (Main) 239-354-6190 (ER)	15	50	<input type="checkbox"/> Yes Level: _____	<input type="checkbox"/> Yes <input checked="" type="checkbox"/> No	<input checked="" type="checkbox"/> Yes <input type="checkbox"/> No
Physicians Regional Pine Ridge	6101 Pine Ridge Road, Naples 34119 Lat:26°12.833'/Long: -81°43.954'	239-348-4000 (Main) 239-304-4748 (ER)	15	50	<input type="checkbox"/> Yes Level: _____	<input type="checkbox"/> Yes <input checked="" type="checkbox"/> No	<input checked="" type="checkbox"/> Yes <input type="checkbox"/> No
Naples Community Hospital	350 7 th Street North, Naples 34102 Lat:26°9.046'/Long: -81°47.907'	239-513-7709 (Main) 239-436-5151 (ER)	15	60	<input checked="" type="checkbox"/> Yes Level: <u>2</u>	<input type="checkbox"/> Yes <input checked="" type="checkbox"/> No	<input checked="" type="checkbox"/> Yes <input type="checkbox"/> No
Jackson Memorial Hospital	1611 NW 12 Avenue, Miami Lat:25°47.508'/Long: -80°12.756'	305-585-1111 (Main) 305-585-6910 (ER)	20	60	<input checked="" type="checkbox"/> Yes Level: <u>1</u>	<input checked="" type="checkbox"/> Yes <input type="checkbox"/> No	<input checked="" type="checkbox"/> Yes <input type="checkbox"/> No
Kendal Regional Medical Center	11750 SW 40 th St., Miami 33175 Lat:25°43.916'/Long: -80°23.148'	305-223-3000 (Main) 305-227-5544 (ER)	20	50	<input checked="" type="checkbox"/> Yes Level: <u>1</u>	<input type="checkbox"/> Yes <input checked="" type="checkbox"/> No	<input checked="" type="checkbox"/> Yes <input type="checkbox"/> No
6. Special Medical Emergency Procedures:							
<ul style="list-style-type: none"> • Patient or nearest responder notifies Group Supervisor who will respond to the scene and become the "incident within an incident" (IWI) commander. • Group Supervisor will notify nearest medical responder and ICP-Communications of the incident and "Nine Line" report attached to the back of this IAP or page 108 of the IRPG. <p>Call "784" (Emergency & Law Enforcement) Everglades Communications on the Oasis or Carns Repeater, or by phone at 1-800-788-0511 if it is determined that a pre-hospital medevac care, air hoist capability or snake bite treatment is required. MedFlight located at Naples Municipal Airport will be used for pre-hospital medevac care. Miami-Dade Fire Rescue (MDFR) Air Rescue Bureau will be used for air hoist rescue and also for snake bite treatment. Everglades Communications will advise the 911 dispatcher for Collier or Dade County for their helicopter to communicate through the Incident's Air/Ground frequency.</p> <p>Note: If possible, give coordinates in aviation format – Degrees, Decimal, Minutes</p> <p><input type="checkbox"/> Check box if aviation assets are utilized for rescue. If assets are used, coordinate with Air Operations.</p>							
7. Prepared by (Medical Unit Leader): Name: <u>Gene-Paul Matson/James P. Fortner(T)</u> Signature: <u>/s/ James P. Fortner</u>							
8. Approved by (Safety Officer): Name: <u>Ken Gordon</u> Signature: <u>/s/ Kenneth R. Gordon</u>							
ICS 206		IAP Page _____		Date/Time: <u>04/10/2017</u>			

INCIDENT RADIO COMMUNICATIONS PLAN (ICS 205)

3. Operational Period: DAY									
Date/Time From: 04/11/2017 0800			Date/Time To: 04/11/2017 2000						
Zone Group	Ch #	Function	Assignment	RX Freq	RX Tone/NAC	TX Freq	TX Tone/NAC	Mode (A,D, or M)	Remarks
	1	CARNS RPT	Initial Attack	172.4250	1035	170.1000	1035	D	Talk Group 1
	2	OASIS RPT	Initial Attack	172.4250	1035	171.6250	1035	D	Talk Group 1
	3	BCY LCL		166.7750	No Tone	166.7750	No Tone	A	
	4	BICY TAC 1	Division A Firing Group	168.6000	No Tone	168.6000	No Tone	A	
	5	BICY LCL 2	DIVISION G	168.2500	No Tone	168.2500	No Tone	A	
	6	A/G 59	Initial Attack	169.1125	No Tone	169.1125	No Tone	A	
	7	Panther RPT	Initial Attack	164.6250	1188	163.1500	1188	D	Talk Group 1
	8	PANTHER TAC 1	DIVISION D/Z	166.7500	No Tone	166.7500	No Tone	A	
	9	PANTHER TAC 2	Initial Attack	166.8250	No Tone	166.8250	No Tone	A	
	10	A/G 85	ALL DIVISIONS	168.3250	No Tone	168.3250	No Tone	A	
	11	Everglades TAC 1	Structure Protection / Parliament Misc.	166.7250	0659	166.7250	0659	D	
	12	CMD 12	DIVISION A/Z Structure/Firing Group	166.6125	No Tone	168.4000	110.9	A	
	13	CMD 13	DIVISION D/G Structure/Firing Group	168.7000	No Tone	170.9750	110.9	A	
	14	A/G	ALL DIVISIONS	167.9500	No Tone	167.9500	No Tone	A	
	15	BCYFLTRP	ALL DIVISIONS	169.7250	1514	163.3875	1738	D	
	16	AIR GUARD		168.6250	No Tone	168.6250	110.9	A	
Name: GEORGE ROSENTHAL				Signature: /s/ George Rosenthal					
				Date/Time: 04/10/2017 1600					

TRAINING
APRIL 11

Trainees, if you haven't checked in with the Training Specialist, please do so as soon as you can.

Several trainees have gaps in the documentation I've received so far. Worse, I haven't received any information from a number of you. If you think you may be one of these folks, stop by when you're around the ICP and we'll straighten it all out. The process takes only a few minutes to complete if you come prepared with your home unit training officer and trainer/evaluator names, addresses, and phone numbers. I'm located in the long trailer with Demob and Check-In. If you need to come in especially early or late, give me a call (231.878.0074) or send an e-mail to jrdavis1755@gmail.com and we'll arrange a time to get together.

Don't wait until either you or your trainer are in Demob.

Training Watch Out

Your task book has tasks signed off in July 2013.

“Education is when you read the fine print. Experience is what you get if you don't.”
- Pete Seeger

John Davis
TNSP

Recycling Guidelines

What is Allowed	What is not Allowed
Plastic #1 through #7, aluminum, and steel cans	Window glass, ceramics, light bulbs
Clear, Brown, and Green Glass	Automotive fluids, paint, cleaning products
Cardboard	Batteries
Paper, magazines, phone books	No food contaminated paper
<ul style="list-style-type: none">• Break down all cardboard boxes• Empty all liquids and food products	



To: All Incident Personnel, Cowbell Fire

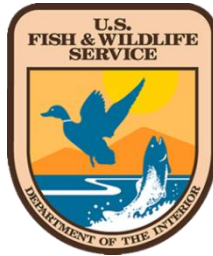
As Southern Area Type II Incident Commander, I am committed to a policy of “zero tolerance” of inappropriate behavior during incident operations. Any form of harassment, discriminatory practices, or disrespectful behavior will not be tolerated. Known or reported acts will be dealt with appropriately.

I am particularly concerned about the perception that alcohol has a place in any of the Incident facilities. It is not appropriate to indulge in alcoholic beverages during any fire assignment.

The Teams from the Southern Region have a team expectation of “NO ALCOHOL” from the time of dispatch until the time of physical release from the Incident. Members of the Team voluntarily comply with this expectation; all incident personnel will be expected to do so also.

We endorse, support, and expect an attitude of mutual respect for all Incident personnel and the public we serve. We also, endorse the attitude and work ethic that places “Safety First, every time on every Incident.” We expect nothing less.

/s/ Steve Parrish
Incident Commander
Southern Area Gold Team



Southern Area Gold Incident Management Team Fire Information

Fire Information Line: 305-204-6659 BICYfireinfo@gmail.com

Please help us keep rumors in check on social media.

- Many of us use social media to share stories and images about the great work we do.
 - Sometimes our friends and families may not fully understand what we do. They may post incorrect information that could cause others to worry unnecessarily about our safety.
 - Please encourage your family and friends to follow official social media channels to get the most up-to-date fire information.
-

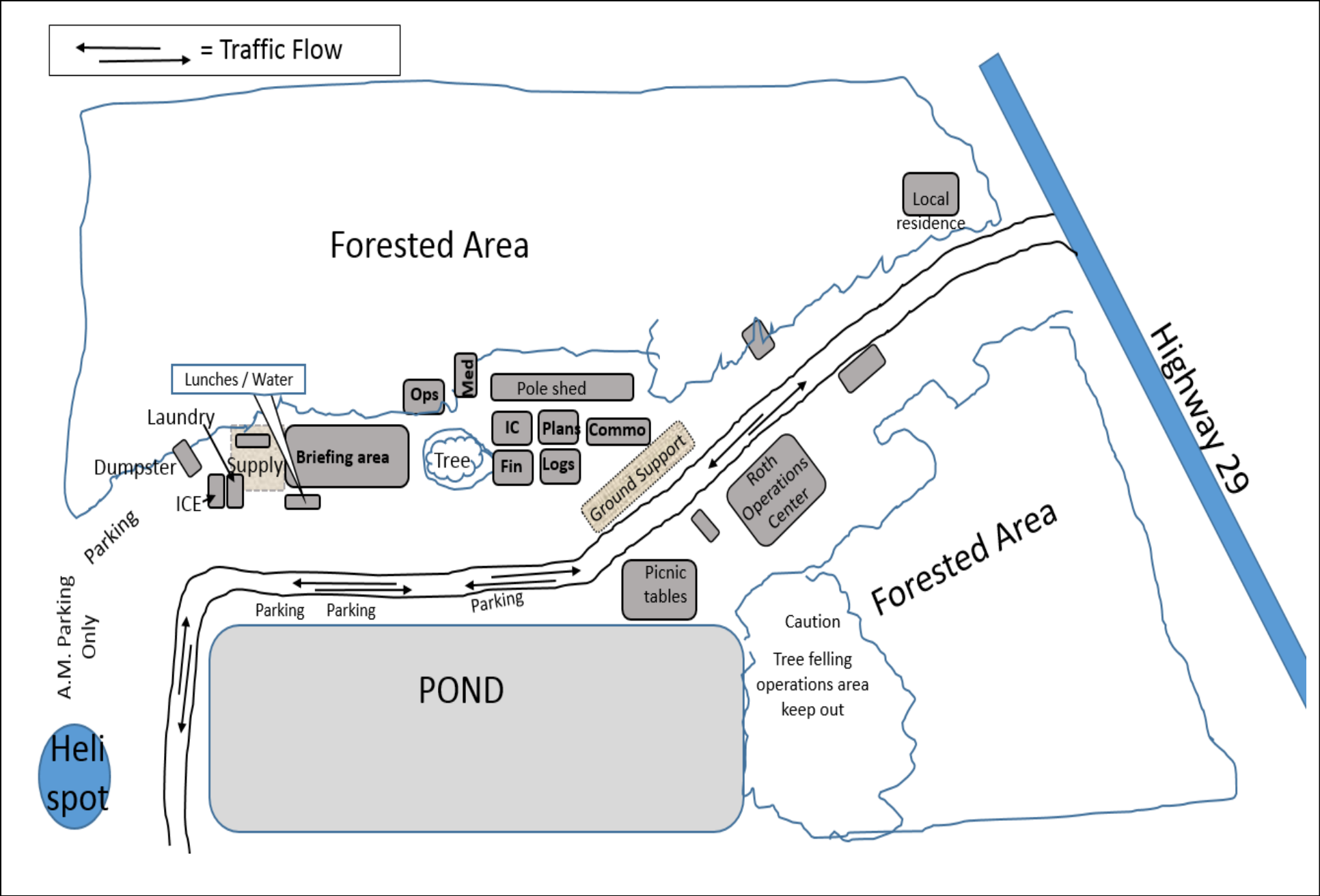
InciWeb <https://inciweb.nwcg.gov/unit/2296>

Twitter <https://twitter.com/BigCypressNPS>

Facebook <https://www.facebook.com/BigCypressNPS>

For general information about the Big Cypress National Preserve, visit <https://www.nps.gov/bicy> or call 239-695-1107

Base Camp Map



Cowbell Fire

Vicinity Map

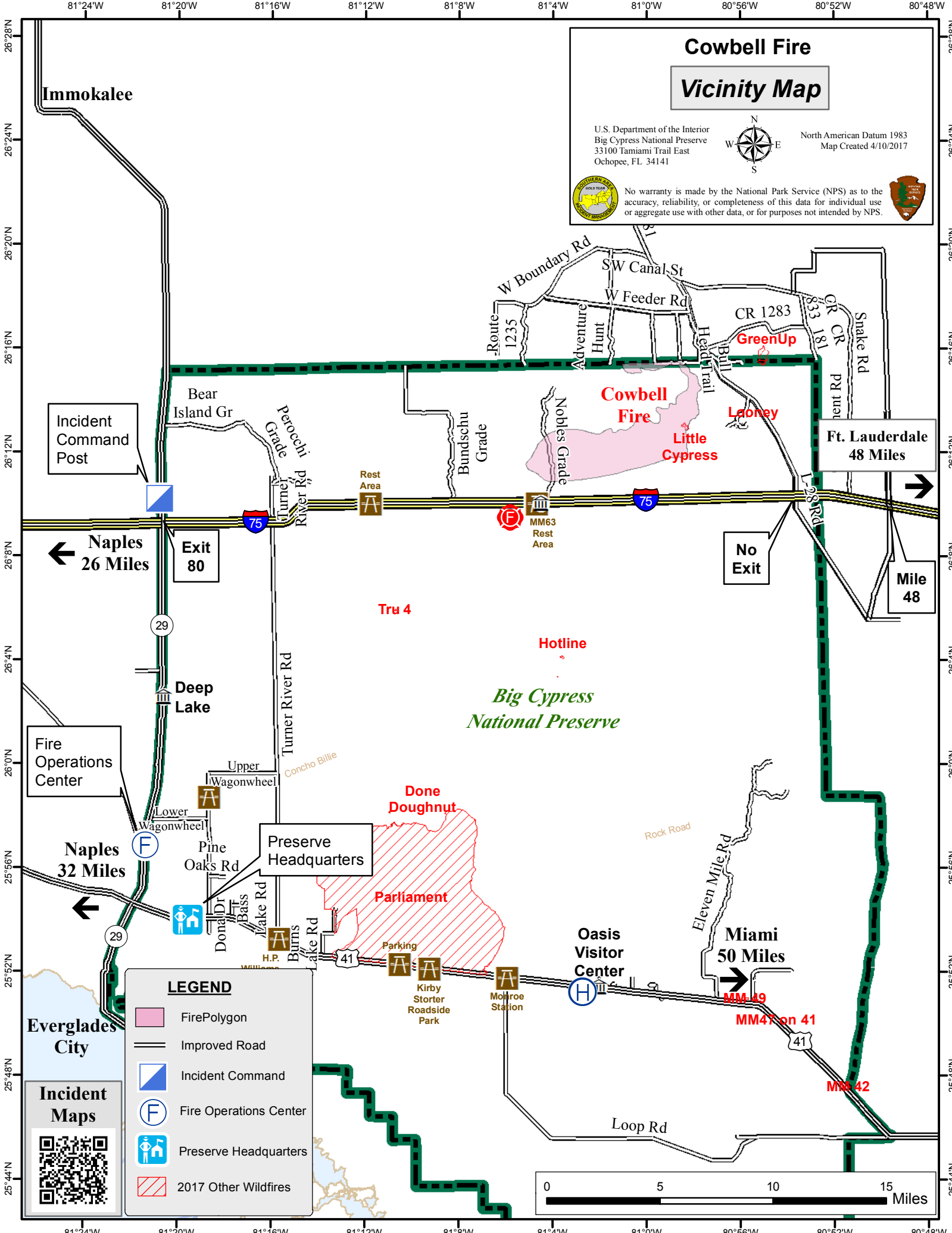
U.S. Department of the Interior
 Big Cypress National Preserve
 33100 Tamiami Trail East
 Ochopee, FL 34141



North American Datum 1983
 Map Created 4/10/2017



No warranty is made by the National Park Service (NPS) as to the accuracy, reliability, or completeness of this data for individual use or aggregate use with other data, or for purposes not intended by NPS.



Incident Command Post

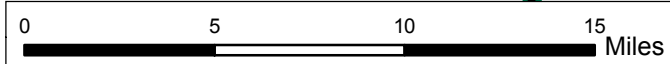
Naples 26 Miles

Fire Operations Center

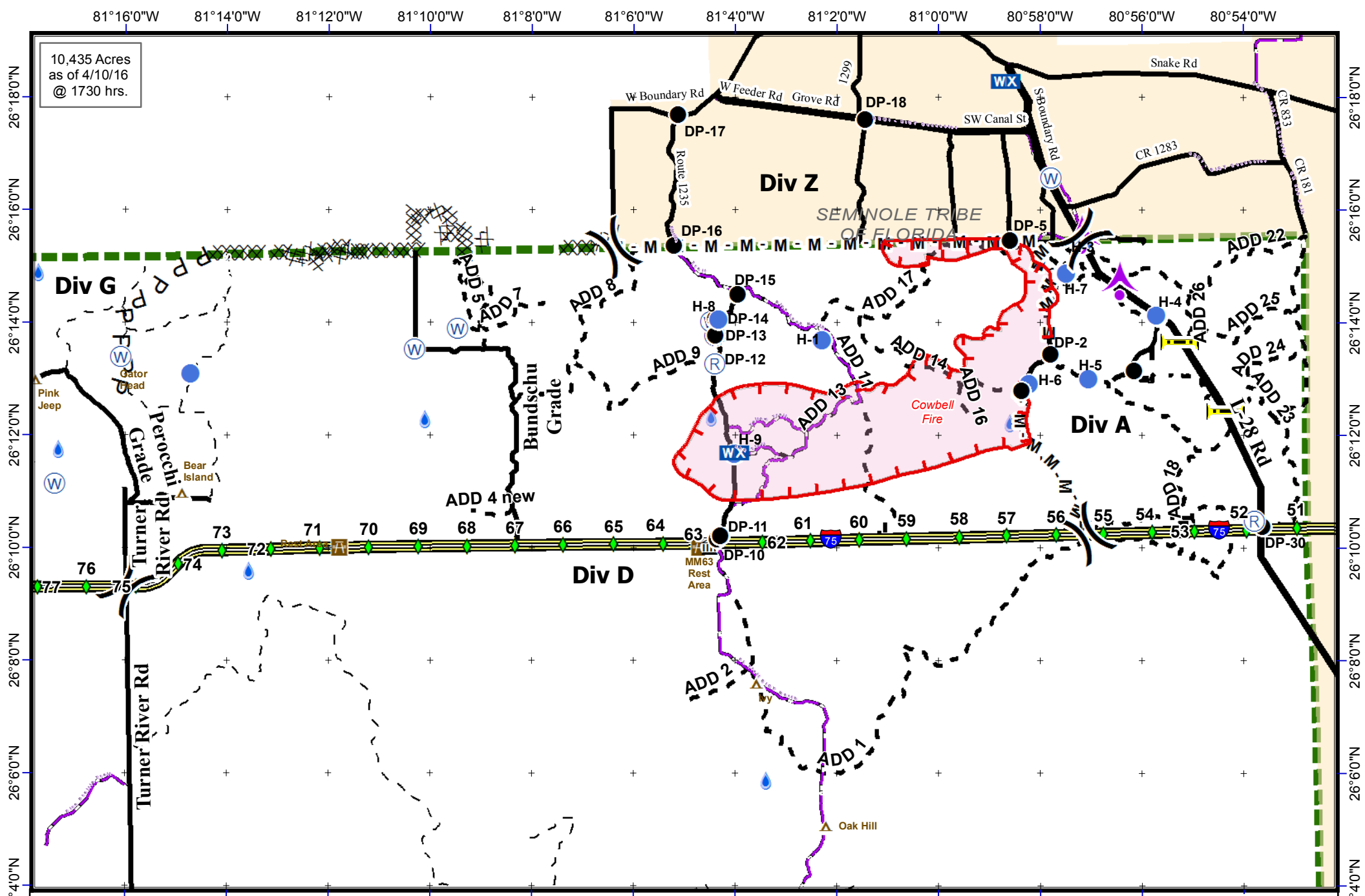
Naples 32 Miles

Incident Maps

LEGEND	
	FirePolygon
	Improved Road
	Incident Command
	Fire Operations Center
	Preserve Headquarters
	2017 Other Wildfires



10,435 Acres
as of 4/10/16
@ 1730 hrs.



Cowbell Fire
FL-BCP-017033

IAP Map
April 11, 2017
Day Shift



- | | | | |
|------------------------|----------------|--------------------|---------------------|
| Uncontrolled Fire Edge | Pump | Aerial Hazard | Bridge Locations |
| Completed Line | Drop Point | Private Structures | I-75 |
| Mastication Line | Helispot | Repeater | Improved Road |
| Completed Dozer Line | Division | NPS Property | Primary Buggy Trail |
| Proposed Line | Mobile Weather | | |

NAD 83 UTM 17

0 0.5 1 2 3
Mile

PHONE LIST - COWBELL FIRE

Position	Name	Phone Number	Position	Name	Phone Number
COMMAND			PLANNING		
Incident Commander	Steve Parrish	850-567-9507	Chief	Dave Berens	601-319-6823
Incident Commander (t)	Lance Elmore	501-520-7276	Chief	Steve Moore	803-360-6956
Deputy Incident Commander	Marty Bentley	423-584-1682	Chief	Dave Dobbs	928-699-5706
Deputy Incident Commander (t)	Debbie Beard	850-524-9966	Resource Unit Leader	Melonie Sellers	601-508-8997
Liaison Officer	Mike Wright	970-819-2890	Resource Unit Leader (t)	E.J. Bunzendahl	859-556-2347
Public Information	Michelle Burnett	803-920-6167	Resource Unit Leader (t)	Jessica Hollingsworth	540-383-6531
Public Information	Susan Blake	850-509-9952	Situation Unit Leader	Jeff DeMatteis	601-415-9080
Public Information (t)	Donald Simon	910-975-1895	Situation Unit Leader (t)	Carol O'Bryan	903-263-8704
Safety Officer	Buddy Kelly	850-447-1344	Fire Behavior Analyst	Gary Jarvis	251-288-1084
Safety Officer	Mark Sullivan	205-531-7183	Fire Behavior Analyst (t)	Kelly Cagle	336-302-0343
Safety Officer (t)	Ken Gordon	850-688-4474	Fire Behavior Analyst (t)	Brenda Dale	906-280-3398
AFMO	Byron Hart	850-264-9567	Air Resource Advisor	Andrea Holland	970-274-0010
			READ	Phil Wilson	406-871-1907
OPERATIONS			READ	Wylie Paxton	828-222-4440
Lead Ops	Greg Brooks	828-421-5025	IMET	John Pendergrast	240-499-6649
Planning Ops	Steve Weaver	828-360-2476	GISS	Chris Evans	928-273-4203
Planning Ops (t)	Paul Varnedoe	423-650-2184	GISS	Melanie Hans	618-315-5404
Field Ops	Robert Trincado	239-253-4135	GISS (t)	Jeff Adams	361-205-4744
Field Ops (t)	Mike Davis	936-219-7743	Demob	Thomas Barrett	478-550-6372
Division A	Chad Cook	828-360-4985	Check In	Jeff Turner	865-684-0095
Division A (t)	Heath Thomas	501-208-7077	Training Specialist	John Davis	231-878-0074
Division D	Mary Owen	601-917-2860	Compter Tech	Jerry Dronberger	479-747-7020
Division G	Chuck Alluisi	970-962-9466	Compter Tech	Rusty Brown	478-973-6231
Division Z	Tom Crews	252-216-6361	Compter Tech (t)	Nikita Carty	305-878-997
Division Initial Attack	Kris Croddy	520-275-6747	LOGISTICS		
Division Parliament	UNSTAFFED		Chief	Willie Boston	770-328-3186
Structure Protection Group	Ryan Vice	979-215-1936	Chief (t)	Tom Phillips	936-635-7154
AIR OPERATIONS			Deputy	Jerry Jussila	218-235-8983
Air Operation Branch Director	Mike Rock	606-813-9750	Deputy	Susan Cornett	903-930-5321
Air Support Group Supervisor	Pete Kubiak	404-661-4819	Supply Unit	Tom Piper	727-514-5513
FINANACE			Facilities Unit	Glen Bee	208-847-5507
Chief	Wanda Kelley	423-584-1472	Ground Support Unit Leader	Michael Howarth	936-414-2697
Chief (t)	Holly Cyprian	928-919-3027	Ordering Manager	Sherri Kite	850-209-2150
Time Unit Leader	Laura Wilson	765-427-7564	Receiving & Distribution	Chris Combs	727-992-0046
Time Unit Leader (t)	Sherise Foster	919-943-7843	Base Camp Manager	Mike Justus	
Comp/Claims	Terri McDonald	352-454-5385	Communications	George Rosenthal	936-707-1832
Equipment Time Recorder (t)	Donna Line	706-474-3216	Communications	Ron Regan	828-772-8514
Personel Time Recorder	Sherise Foster	919-943-7843	Comms Trailer		772-631-2573
Personnel Time Recorder (t)	Gustavo Vallejo	423-457-7403	Medical Unit Leader	Gene-Paul Matson	434-665-0444
			Medical Unit Leader (t)	James Fortner	202-236-3139
			Security Mananger	Sasha Herrin	239-300-5755
			Security Mananger (t)	RJ Seehase	414-739-5696

UNIT LOG	1. Incident Name	2. Date Prepared	3. Time Prepared
4. Unit Name/Designators	5. Unit Leader (Name and Position)		6. Operational Period

7. Personnel Roster Assigned		
------------------------------	--	--

Name	ICS Position	Home Base

8. Activity Log	
-----------------	--

Time	Major Events

9. Prepared by (Name and Position)	
------------------------------------	--

Medical Incident Report- "9 Line"

FOR ALL MEDICAL EMERGENCIES: IDENTIFY ON SCENE INCIDENT COMMANDER BY NAME AND POSITION AND ANNOUNCE "MEDICAL EMERGENCY" TO INITIATE RESPONSE FROM IMT COMMUNICATIONS/DISPATCH.

Use items one through nine to communicate situation to communications/dispatch.

1. CONTACT COMMUNICATIONS/DISPATCH - Comms Trailer Phone (772-631-2573)

Radio Call Sign "784" for Life Threatening Emergencies on the Oasis or Carns repeater or by phone at 1-800-788-0511

Ex: "Communications, Div. Alpha. Stand-by for Priority Medical Incident Report." (If life threatening request designated frequency be cleared for emergency traffic.)

2. INCIDENT STATUS: Provide incident summary and command structure.

Nature of Injury/Illness		<i>Describe the injury (Ex: Broken leg with bleeding)</i>
Incident Name		<i>Geographic Name + "Medical" (Ex: Trout Meadow Medical)</i>
Incident Commander		<i>Name of IC</i>
Patient Care		<i>Name of Care Provider (Ex: EMT Smith)</i>

3. INITIAL PATIENT ASSESSMENT: Complete this section for each patient. This is only a brief, initial assessment. Provide additional patient info after completing this 9 Line Report.

Number of Patients:	Male / Female	Age:	Weight:
Conscious? <input type="checkbox"/> YES <input type="checkbox"/> NO = MEDEVAC!			
Breathing? <input type="checkbox"/> YES <input type="checkbox"/> NO = MEDEVAC!			
Mechanism of Injury: <i>What caused the injury?</i>			
Lat/Long (Datum NAD83)			

4. SEVERITY OF EMERGENCY, TRANSPORT PRIORITY

SEVERITY	TRANSPORT PRIORITY
<input type="checkbox"/> URGENT-RED Life threatening injury or illness. <i>Ex: Unconscious, difficulty breathing, bleeding severely, 2° – 3° burns more than 4 palm sizes, heat stroke, disoriented.</i>	Ambulance or MEDEVAC helicopter. Evacuation need is IMMEDIATE.
<input type="checkbox"/> PRIORITY-YELLOW Serious Injury or illness. <i>Ex: Significant trauma, not able to walk, 2° – 3° burns not more than 1-2 palm sizes.</i>	Ambulance or consider air transport if at remote location. Evacuation may be DELAYED.
<input type="checkbox"/> ROUTINE-GREEN Not a life threatening injury or illness. <i>Ex: Sprains, strains, minor heat-related illness.</i>	Non-Emergency. Evacuation considered Routine of Convenience.

5. TRANSPORT PLAN:

Air Transport: (Agency Aircraft Preferred)

<input type="checkbox"/> Helispot	<input type="checkbox"/> Short-haul/Hoist	<input type="checkbox"/> Life Flight	<input type="checkbox"/> Other
Ground Transport:			
<input type="checkbox"/> Self-Extract	<input type="checkbox"/> Carry-Out	<input type="checkbox"/> Ambulance	<input type="checkbox"/> Other

6. ADDITIONAL RESOURCE/EQUIPMENT NEEDS:

<input type="checkbox"/> Paramedic/EMT(s)	<input type="checkbox"/> Crew(s)	<input type="checkbox"/> SKED/Backboard/C-Collar
<input type="checkbox"/> Burn Sheet(s)	<input type="checkbox"/> Oxygen	<input type="checkbox"/> Trauma Bag
<input type="checkbox"/> Medication(s)	<input type="checkbox"/> IV/Fluid(s)	<input type="checkbox"/> Cardiac Monitor/AED
<input type="checkbox"/> Other (i.e. splints, rope rescue, wheeled litter)		

7. COMMUNICATIONS:

Function	Channel Name/Number	Receive (Rx)	Tone/NAC *	Transmit (Tx)	Tone/NAC *
COMMAND	CARNS Rpt Channel 1	172.4250	1035	170.1000	1035
COMMAND	OASIS Rpt Channel 2	172.4250	1035	171.6250	1035
COMMAND	CMD Channel 12	166.6125	No Tone	168.4000	110.9
AIR-TO-GRND	AG/85 Channel 10	168.3250	No Tone	168.3250	No Tone
TACTICAL					

*(NAC for digital radio system)

8. EVACUATION LOCATION:

Lat/Long (Datum NAD83) <i>EX: N 40 42.45' x W 123 03.24'</i>	
Patient's ETA to Evacuation Location:	
Helispot/Extraction Size and Hazards:	

9. CONTINGENCY:

Considerations: If primary options fail, what actions can be implemented in conjunction with primary evacuation method? Be thinking ahead...

REMEMBER: Confirm ETA's of resources ordered
Act according to your level of training
Be Alert. Keep Calm. Think Clearly. Act Decisively.