

# Incident Action Plan



2. IN COUNTRY NOT SEEN IN DAYLIGHT

**Day Operational Period**

**Thursday**

**4/13/17**

**0800-2000**

**Cowbell Fire**

16,944 acres

38% contained

FL-BCP-017033

PPKX14 (1502)



INCIDENT OBJECTIVES	1. Incident Name <b>Cowbell Fire</b>	2. Date Prepared <b>4/12/17</b>	3. Time Prepared <b>1700</b>
4. Operational Period <b>4/13/17 0800 - 2000</b>			
5. General Control Objectives For The Incident <u>Objectives for the Incident:</u> <ul style="list-style-type: none"> <li>• Protection of human life is top priority through the use of sound risk management decisions.</li> <li>• Protect private property and infrastructure, federal facilities, critical transportation corridors, recreational and cultural resource values, T&amp;E species and their habitat (e.g. Florida Panther, Florida bonneted bat, Red-Cockaded Woodpecker), and wilderness values through coordination with READS and following MIST Tactics on current and all initial and extended attack fires.</li> <li>• Provide opportunities to communicate and educate the public on the role of fire in the BCP and FPR ecosystems through social media and other outlets.</li> <li>• Provide training opportunities for Preserve, State, and local federal fire agency personnel to actively enhance successional planning of future firefighting personnel.</li> <li>• Provide initial attack for Big Cypress National Preserve and Florida Panther Refuge.</li> </ul>			
<u>Control Objectives:</u> <ul style="list-style-type: none"> <li>• Keep fire: <ul style="list-style-type: none"> <li>○ West of Add 14 and Add 17 on the eastern side</li> <li>○ South of the Preserve boundary on the northern side</li> <li>○ North of Interstate 75 on the south side</li> <li>○ East of State Highway 29 on the west side</li> </ul> </li> <li>• To minimize impacts to high values including Seminole and Miccosukee tribal lands, Sanctuary community, and private land within and near to the boundaries of the Big Cypress National Preserve and Florida Panther Wildlife Refuge.</li> <li>• Minimize smoke impacts on I-75, State Road 29 and US Highway 41 in order to avoid safety threats to the public.</li> <li>• Utilize confine, contain, and point source protection strategies and tactics that commit responders only to operations where and when they can be successful and under conditions where important values actually at risk are protected with the least exposure necessary while sustaining relationships with the people we serve.</li> </ul>			
6. Weather forecast for Period  Onshore winds will continue to keep RH values somewhat higher due to the marine influence. Winds will pick a little more in the afternoon due to sea breeze passage. There's only a small chance of a shower.			
7. General Safety Message  Look up, look down, look all around for hazards, recognize them and mitigate them.			
8. ATTACHMENTS (X IF ATTACHED) [ X ] Organization List - ICS 203                      [ X ] Medical Plan - ICS 206    [ ] _____ [ X ] Division Assignment Lists - ICS 204        [ X ] Incident Map                    [ ] _____ [ X ] Communications Plan - ICS 205                [ X ] Traffic Plan                      [ ] _____			
9. Prepared By (Planning Section Chief)  <b>/s/ Dave Berens / Dave Dobbs</b>	10. Approved By (Incident Commander)  <b>/s/ Marty Bentley</b>		

ORGANIZATION ASSIGNMENT LIST		9.	Operations Section	
1. Incident Name <b>COWBELL FIRE</b>		Lead Operations		Greg Brooks
		Planning Operations		Steve Weaver, Paul Varnedoe (t)
		Field Operations		Robert Trincado, Mike Davis (t)
2. Date 04/12/17		3. Time 1700		
4. Operational Period 04/13/17 DAY (0800 – 2000)		<b>a.</b>		<b>Divisions/Groups</b>
<b>5. Incident Commander and Staff</b>		Division	A	Chad Cook, Heath Thomas (t)
Incident Commander	Steve Parrish, Lance Elmore (t)	Division	D	Micah Johnson/Chris Richards (t)
Deputy Incident Commander	Marty Bentley, Debbie Beard (t)	Division	G	Chuck Alluisi/ Mike Honeycutt (t)
Liaison Officer	Mike Wright, Pam Martin (t)	Division	Z	Tom Crews
Safety Officer	Buddy Kelley, Mark Sullivan, Ken Gordon (t)	Division	Initial Attack	Chris Croddy
Information Officer	Susan Blake, Michelle Burnett, Donald Simon (t)	Division	Parliament & Misc Fires	UNSTAFFED
		Group	Structure Protection	Ryan Vice
<b>6. Agency Reps</b>				
Agency Administrator	Tammy Whittington (Big Cypress)			
Agency Administrator	J.D. Lee (Big Cypress)			
Chief of Fire & Aviation	Jordan McNight (Big Cypress)			
AFMO	Byron Hart (BICY/Panther)			
Zone FMO	Cass Palmer (Panther)			
Collier Co. Sheriff	Lt. Jake Walker	<b>b.</b>		<b>Air Operations Branch</b>
Seminole Tribe of Florida	Grant Steelman			
Florida Highway Patrol	Lt. Joseph Bowers	Air Operation Branch Director		Mike Rock
Greater Naples Fire Rescue	J. Nolan Sapp	Air Support Group Supervisor		Pete Kubiak/Mike O'Leary (t)
FFS Collier Co Forest Area Sup	Tony Curella	Air Tactical Group Supervisor		Ken McLaughlin
FFS Hendry Co Forest Area Sup	Joe Lecea	Helibase Manager		Matt Clinton/Mike Roof (t)
<b>7. Planning Section</b>				
Chief	Dave Berens, Dave Dobbs			
Resources Unit	Melonie Sellers, E.J. Bunzendahl (t) Jessica Hollingsworth (t)			
Situation Unit	Jeff DeMatteis, Carol O'Bryan (t)			
FBAN	Gary Jarvis, Brenda Dale (t), Kelly Cagle (t)	<b>8. Logistics Section</b>		
Air Resource Advisor	Andrea Holland	Chief		Chris Alford, Tom Phillips (t)
READ	Phil Wilson, JoAnne Young	Deputy		Jerry Jussila, Susan Cornett
IMET	John Pendergrast	Supply Unit		Tom Piper
Geo. Info. Spec.	Chris Evans, Melanie Hans, Jeff Adams (t)	Facilities Unit		Glen Bee
Demob Unit	Jeff DeMatteis	Ground Support		Michael Howarth/Peter Lashoto
Status Check-In	Jeff Turner	Equipment Manager		
Training	John Davis	Ordering Manager		Sherri Kite
ITSS	Jerry Dronberger, Rusty Brown, Nikita Carty (t)	Receiving & Distrib. Mgr.		Chris Combs/Jonathan Lampley (t)
Documentation	Bob Sobczak (t)	Base Camp Manager		Mike Justus
<b>10. Finance Section</b>		Communications Unit		George Rosenthal, Ron Regan
Chief	Wanda Kelley, Holly Cyprian (t)	Incident Communication Mgr.		
Time Unit	Laura Wilson, Sherise Foster (t)	Rado		Mark Pomponio, Federico Avakian, Brian Gieryk, Scott Brownlow
Equipment Time Unit	Donna Line (t)	Medical Unit Leader		Gene-Paul Matson, James Fortner (t)
Cost Unit	Carolyn Hughes, Janice Lowe (t)	Security Manager		Sasha Herrin, RJ Seehase (t)
Comp/Claims	Terri McDonald, David Easter(t)	Security		Brian Phillips
Procurement	Leslie Solberg			
Personnel Time Recorder	Gustavo Vallejo (t)			
Prepared by (RESL) /s/ Melonie Sellers / EJ Bunzendahl (t)/Jessica Hollingsworth (t)				



# Fire Weather Forecast

FORECAST NO:	11	NAME OF FIRE:	Cowbell Fire
PREDICTION FOR:	Thursday Day Shift	UNIT:	Big Cypress National Preserve
SHIFT DATE:	April 13, 2017	Incident Meteorologist:	<i>John Pendergrast</i>
FORECAST ISSUED:	1900 April 12, 2017		240-499-6649

---

**DISCUSSION:** Onshore winds will continue to keep RH values somewhat higher due to the marine influence. Winds will pick a little more in the afternoon due to sea breeze passage. There's only a small chance of a shower.

## TODAY (THURSDAY DAY SHIFT):

**WEATHER:** Partly cloudy with morning smoke/haze near fire. Isolated brief showers.  
**WIND (20 FT):** Northeast 5 to 10 mph increasing to around 15 mph in the afternoon.  
**MAX TEMPERATURES:** 83 to 86.  
**MIN RH:** 45%.  
**LAL:** 1      Chance measurable rain: 20%  
**DISPERSION:** 58 MAX    **MIXING HEIGHT** 5500    **TRANSPORT WINDS:** Northeast 15 to 20 mph in afternoon.

## TONIGHT (THURSDAY NIGHT):

**WEATHER:** Partly cloudy. Patchy smoke accumulating near fires late. Northeast wind decreasing in evening.  
**WIND (20 FT):** Northeast 5 to 10 mph in the evening. Becoming North to Northeast 1 to 2 mph overnight.  
**MIN TEMPERATURES:** 60 to 62F.  
**MAX RH:** 98 to 100%. LVORI 7 (max).  
**LAL:** 1      Chance measurable rain: 5%.

## FRIDAY:

**WEATHER:** Partly cloudy. Breezy in the afternoon. No rain chance.  
**WIND (20 FT):** Northeast 7 to 10 mph early increasing to Northeast 15 to 20 mph in the afternoon.  
**MAX TEMPERATURES:** 82 to 85F.  
**MIN RH:** 42%.  
**LAL:** 1      Chance measurable rain: 0%.  
**DISPERSION:** 68 MAX    **MIXING HEIGHT** 5300    **TRANSPORT WINDS** Northeast 20 mph.

**GENERAL OUTLOOK SATURDAY THROUGH MONDAY:** High Pressure over Atlantic Ocean will weaken some. Local winds will remain primarily East with a Northeast tendency at night and in mornings. No critical fire weather conditions expected. A slight chance of showers and a few storms is forecast mainly west of the fire area.

**WINDS:** Saturday and Sunday: East 10 to 15 mph. Becoming Northeast 5 mph at night. Monday: East-Southeast 10 to 15 mph.

**WEATHER/TEMPERATURE:** Partly cloudy with a slight chance of showers each day. Lows in the Low 60s. Highs in the Mid 80s.

**MIN RH:** 40 to 45 percent each day.

**NIGHT TIME RECOVERY:** Near 100 percent each night.



Current Incident  
area RAWs  
conditions

Sunrise Thursday: 7:05 am  
Sunset Thursday: 7:48 pm

Source: US Naval Observatory

## FIRE BEHAVIOR FORECAST

<b>FORECAST NUMBER: #11</b>	<b>TYPE OF FIRE: Wildland</b>
<b>FIRE NAME: Cowbell</b>	<b>OPERATIONAL PERIOD: 04/13/2017</b>
<b>DATE ISSUED: 04/12/2017</b>	<b>TIME ISSUED: 2000</b>
<b>UNIT: Big Cypress Preserve</b>	<b>WRITTEN: Kelly Cagle SIGNED: Gary Jarvis FBAN 251.288.1084</b>

### FUEL ASSUMPTIONS:

3 Fuel Models to consider: Grass, (GR4) Shrub (SH8), and Timber Litter (TL8)

Grass fuels have the highest rate of spread. **They also dry out the quickest.**

Shrub fuels are the most explosive and have the most spotting potential

Timber litter fuels typically have lower ROS and Flame Length than grass and shrub

All 3 Fuel Types are Burning readily. Consider all Fuels (even green ones) to be available fuel!

### The fuel moisture for today is:

1 hr 8%    10 hr 10%    100 hr 15%    1000 hr 16%

**ERC levels have been at or above 97th Percentile! Those areas of BICY/FPNWR that did not receive rainfall still are!**

**Critical fire behavior thresholds:** 1 HR Fuel Moisture <6%, RHs below 40% and a Dispersion Index greater than 60.

WEATHER: Partly cloudy with areas of morning smoke or haze. Chance of an isolated shower.

WIND (20 FT): Northeast 5 to 10 mph increasing to around 15 mph in the afternoon.

MAX TEMPERATURES: 83 to 86.

MIN RH: 45%.

LAL: 1      Chance measurable rain:20%

DISPERSION: 58 MAX    MIXING HEIGHT 5500    TRANSPORT WINDS: northeast 15 to 20 mph in the afternoon

**General Fire Behavior Forecast:** Any areas that received rainfall will see reduced fire behavior today. In areas that did not receive rain, Initial attack is still a possibility, and any new starts will spread easily, could grow in intensity and will have the potential to produce spotting and rapid growth, especially in the afternoon hours.

### Specific:

**Cowbell:** Due to rainfall – expect smoldering and creeping early. If the fire receives a full day of sun, it would be possible to see fire behavior at the low end of the predicted range for today (18 to 20 chains per hour with 3 to 5 foot flame lengths) during the peak of the burn period in timber stands with grass or palmetto understory.

**Parliament and Greenup** – These fires will likely continue to flare up during mid-afternoon and move around in the green interior pockets or unburned areas along the perimeter. Fire behavior will likely be low intensity and low rate of spread. Smoke may continue to impact Hwy 41 for a couple of hours each afternoon. These fires bear watching –any escape into unburned fuel across control lines will likely display rapid rates of spread and resistance to control.

**Initial Attack:** In areas that did not receive rain, heavy resistance can be expected on any new starts in all fuel types. Expect rapid rates of spread, especially in the grass models and anticipate some spotting to challenge your control efforts. Southern portions of the response area received very little rainfall.

### PREDICTIONS FOR MOST ACTIVE TIME OF PEAK BURNING PERIOD USING WEATHER FROM INCIDENT IMET

Fuel Model	Fire Behavior
Grass	ROS-30 to 50 ch/hr and 4 to 7' Flame lengths
Shrub	ROS-18 to 28 ch/hr and 5 to 10' Flame lengths
Timber Litter (Cypress)	ROS-4 to 6 ch/hr and 2 to 4' Flame lengths
Spotting	Minimal – less than .1 miles
Probability of Ignition	43 % all models

**AIR OPERATIONS:** Potential for light inversion this morning. Heavy inversion is not expected.

**FIRE BEHAVIOR SAFETY:** Be aware that any new starts in areas that did not receive rain can potentially produce fire behavior similar to what is listed in the chart above.

## Division/Group Assignment List (ICS 204 WF)

<b>1. Incident Name:</b>			<b>3.</b>					
Cowbell Fire			Branch:		Division/Group			
<b>2. Operational Period:</b>			<b>A</b>					
Date/Time From:	Date/Time To:							
04/13/17 0800	04/13/17 2000							
<b>4. Operations Personnel</b>								
AIR ATTACK SUPERVISOR				FIELD OPERATIONS		Robert Trincado Mike Davis (t)		
DIVISION/GROUP SUPERVISOR	Chad Cook Heath Thomas (t)			PLANNING OPERATIONS		Steve Weaver Paul Varnedoe (t)		
<b>5. Resources Assigned this Period</b>								
Strike Team / Task Force / Resource Designator	LWD	Leader			Number Persons	Drop Off PT./Time	Pick Up PT./Time	
MOD Great Smoky	O-102	4/15	Josh Nicholas			4	ICP/0800	ICP/2000
Seminole Suppression Buggy	E-60	4/13	Mike Lightsey			2	ICP/0800	ICP/2000
SOFR	O-89	4/19	John Foley			1	ICP/0800	ICP/2000
EMTP	O-36	4/18	Frank Abel			1	ICP/0800	ICP/2000
<b>6. Control Operations/Work Assignments:</b>								
<b>Task:</b>								
<ul style="list-style-type: none"> <li>Patrol and mop up hot spots up to ½ chain in</li> </ul>								
<b>Purpose:</b>								
<ul style="list-style-type: none"> <li>To keep fire confined and contained west of ADD 17/ADD 14 on east flank of fire</li> <li>To protect structures</li> </ul>								
<b>End State:</b>								
<ul style="list-style-type: none"> <li>Control fire perimeter west of ADD 17/ADD 14 to eliminate threat to Sanctuary area structures</li> </ul>								
<b>7. Special Instructions:</b> Follow tracked vehicle requirement restrictions. Establish and maintain LCES during operational period. Comms trailer Phone (772) 631-2573. Coordinate with Field OPS in the event swing shift resources are required.								
<b>8. Division/Group Communication Summary</b>								
Function	Channel	RX Frequency N/W	RXTone/NAC	TX Frequency N/W	TX Tone/NAC	Mode		
COMMAND	12	166.6125		168.4000	110.9	A		
TACTICAL	4	168.6000		168.6000		A		
AIR TO GROUND	10	168.3250		168.3250		A		
<b>9. Prepared By (Resource Unit Leader)</b>			<b>Approved By (Planning Section Chief)</b>			<b>Date</b>	<b>Time</b>	
/s/Melonie Sellers/EJ Bunzendahl (t) /Jessica Hollingsworth (t)			Dave Berens/Dave Dobbs			04/12/17	16:00	



## Division/Group Assignment List (ICS 204 WF)

<b>1. Incident Name:</b>			<b>3.</b>			
Cowbell Fire			<b>Branch:</b>		<b>Division/Group</b>	
<b>2. Operational Period:</b>					<b>G</b>	
Date/Time From: 04/13/17 0800	Date/Time To: 04/13/17 2000					
<b>4. Operations Personnel</b>						
AIR ATTACK SUPERVISOR			FIELD OPERATIONS		Robert Trincado, Mike Davis (t)	
DIVISION/GROUP SUPERVISOR	Chuck Alluisi Mike Honeycutt (t)		PLANNING OPERATIONS		Steve Weaver Paul Varnedoe (t)	
<b>5. Resources Assigned this Period</b>						
Strike Team / Task Force / Resource Designator	LWD	Leader	Number Persons	Drop Off PT./Time	Pick Up PT./Time	
ENG3 #51	E-99	4/19	Mike Anderson	5	ICP/0800	ICP/2000
ENG3 #335	E-100	4/19	Zach McGarr	5	ICP/0800	ICP/2000
ENG 6 Firetrax	E-86	4/19	Carlos Gutierrez	3	ICP/0800	ICP/2000
ENG 6 Wildlands Fire Service	E-87	4/19	Brian Terry	3	ICP/0800	ICP/2000
ENG6 Wildlands Fire Service	E-121	4/25	David Hogrefe	3	ICP/0800	ICP/2000
Slimer Suppression Buggy	E-80	4/15	Matt Mateo	3	ICP/0800	ICP/2000
BICY Suppression Buggy #2	E-64	4/15	Justin Phippen	2	ICP/0800	ICP/2000
BICY Suppression Buggy #3	E-65	4/15	Megan Hurrell	1	ICP/0800	ICP/2000
Duece Buggy IA #607	E-89	4/23	Conner Boudin	2	ICP/0800	ICP/2000
Masticator	E-6	4/17	Mike Joel	1	ICP/0800	ICP/2000
Masticator GEO-BOY	E-83	4/24	Rob Shackelford	1	ICP/0800	ICP/2000
HEQB	O-124	4/24	Jesse Barr	1	ICP/0800	ICP/2000
HEQB	O-25	4/16	Eric Moore	1	ICP/0800	ICP/2000
SOFR	O-63	4/19	David Dallison	1	ICP/0800	ICP/2000
READ	O-33	4/18	Phil Wilson	1	ICP/0800	ICP/2000
FOBS	O-24	4/19	Gabe Gamino	1	ICP/0800	ICP/2000
FOBS (t)	O-84	Local	Mindy Wright	1	ICP/0800	ICP/2000
EMTF	O-17	4/15	Jim Stout	1	ICP/0800	ICP/2000
<b>6. Control Operations/Work Assignments:</b>						
<b>Task:</b>						
<ul style="list-style-type: none"> <li>• Patrol and conduct mop up, as appropriate</li> <li>• Continue strategic firing operations on Nobles Grade</li> <li>• Masticate along Bundschu Grade</li> <li>• Coordinate firing with DIV Z as needed</li> <li>• Continue monitoring and using aerial support to contain slopover on Nobles Grade</li> </ul>						
<b>Purpose:</b>						
<ul style="list-style-type: none"> <li>• To keep fire contained east of Nobles Grade</li> </ul>						
<b>End State:</b>						
<ul style="list-style-type: none"> <li>• Confine fire perimeter to reduce threats to resource values at risk</li> </ul>						



**7. Special Instructions:** Establish and maintain LCES during operational period. Coordinate with Field OPS in the event swing shift resources are required. Utilize MIST tactics as outlined in Fire Operations Guide for BICY. Comms trailer Phone (772) 631-2573. Follow tracked vehicle requirement restriction. Interpret data from morning IR flight to determine hot spots within DIV G.

8. Division/Group Communication Summary						
Function	Channel	RX Frequency N/W	RXTone/NAC	TX Frequency N/W	TX Tone/NAC	Mode
COMMAND	15	173.0375		167.3250	110.9	A
TACTICAL	5	168.2500		168.2500		A
AIR TO GROUND	10	168.3250		168.3250		A
9. Prepared By (Resource Unit Leader)		Approved By (Planning Section Chief)			Date	Time
/s/Melonie Sellers/EJ Bunzendahl (t) /Jessica Hollingsworth (t)		Dave Berens/Dave Dobbs			04/12/17	16:00

## Division/Group Assignment List (ICS 204 WF)

<b>1. Incident Name:</b>				<b>3.</b>				
Cowbell Fire				<b>Branch:</b>		<b>Division/Group</b>		
<b>2. Operational Period:</b>						<b>Z</b>		
Date/Time From: 04/13/17 0800		Date/Time To: 04/13/17 2000						
<b>4. Operations Personnel</b>								
AIR ATTACK SUPERVISOR			FIELD OPERATIONS			Robert Trincado Mike Davis (t)		
DIVISION/GROUP SUPERVISOR			Tom Crews			PLANNING OPERATIONS Steve Weaver Paul Varnedoe (t)		
<b>5. Resources Assigned this Period</b>								
Strike Team / Task Force / Resource Designator		LWD	Leader		Number Persons	Drop Off PT./Time	Pick Up PT./Time	
HC1 Asheville		C-6	4/18	Allen Mitchell		18	ICP/0800	ICP/2000
MOD Buffalo		O-21	4/16	Josh Hampton		6	ICP/0800	ICP/2000
Seminole Tractor w/Harrow		E-61	Local	Jeff Radakovic		1	ICP/0800	ICP/2000
Transport Buggy		E-38	4/15	Clint Weeks		1	ICP/0800	ICP/2000
Transport Buggy		E-39	4/15	Captain Steve-Clinton Weeks		1	ICP/0800	ICP/2000
Transport Buggy		E-40	4/15	Bobby Weeks		1	ICP/0800	ICP/2000
Transport Buggy		E-41	4/15	Victor Robinson		1	ICP/0800	ICP/2000
SOFR		O-38	4/16	Joe Fowler		1	ICP/0800	ICP/2000
READ		O-154	4/25	JoAnne Young		1	ICP/0800	ICP/2000
EMTF		O-15	4/16	Matt Lancaster		1	ICP/0800	ICP/2000
<b>6. Control Operations/Work Assignments:</b>								
<b>Task:</b>								
<ul style="list-style-type: none"> <li>• Patrol and conduct mop up, as appropriate</li> <li>• Conduct strategic firing operations on property boundary</li> </ul>								
<b>Purpose:</b>								
<ul style="list-style-type: none"> <li>• To keep fire south of Preserve Boundary and west of ADD 17 to protect private land with structures</li> </ul>								
<b>End State:</b>								
<ul style="list-style-type: none"> <li>• Control fire perimeter south and east of ADD 17 to eliminate threat to Seminole Tribe of Florida and Ceremonial Area</li> </ul>								
<b>7. Special Instructions:</b> Establish and maintain LCES during operational period. Coordinate with Field OPS in the event swing shift resources are required. Follow tracked vehicle restriction requirements. Utilize MIST tactics as outlined in Fire Operations Guide for BICY. Comms trailer Phone (772) 631-2573.								
<b>8. Division/Group Communication Summary</b>								
Function	Channel	RX Frequency N/W	RXTone/NAC	TX Frequency N/W	TX Tone/NAC	Mode		
COMMAND	12	166.6125		168.4000	110.9	A		
TACTICAL	8	166.7500		166.7500		A		
AIR TO GROUND	10	168.3250		168.3250		A		
<b>9. Prepared By (Resource Unit Leader)</b>			<b>Approved By (Planning Section Chief)</b>			<b>Date</b>	<b>Time</b>	
/s/Melonie Sellers/EJ Bunzendahl (t) /Jessica Hollingsworth (t)			Dave Berens/Dave Dobbs			04/12/17	16:00	

## Division/Group Assignment List (ICS 204 WF)

<b>1. Incident Name:</b>				<b>3.</b>			
Cowbell Fire				Branch:		Division/Group	
<b>2. Operational Period:</b>				<b>IA</b>			
Date/Time From: 04/13/17 0800		Date/Time To: 04/13/17 2000					
<b>4. Operations Personnel</b>							
AIR ATTACK SUPERVISOR				FIELD OPERATIONS		Robert Trincado Mike Davis (t)	
DIVISION/GROUP SUPERVISOR		Kris Croddy		PLANNING OPERATIONS		Steve Weaver Paul Varnedoe (t)	
<b>5. Resources Assigned this Period</b>							
Strike Team / Task Force / Resource Designator		LWD	Leader		Number Persons	Drop Off PT./Time	Pick Up PT./Time
TFLD **	O-60	4/19	Harold Kibbe		1	ICP/0800	ICP/2000
TFLD	O-144	4/24	Willard Worley		1	ICP/0800	ICP/2000
MOD EE	O-67	4/18	Matt Britt		8	ICP/0800	ICP/2000
ENG6 Big Thickett **	E-57	4/19	Gus Schaefer		2	ICP/0800	ICP/2000
ENG6 K31 **	E-7	4/15	Steven Staples		2	ICP/0800	ICP/2000
ENG6 Attack One	E-58	4/19	Kevin Carter		2	ICP/0800	ICP/2000
ENG6 CSP661	E-59	4/20	Jason Johnson		2	ICP/0800	ICP/2000
ENG6 Wildlands Fire Service	E-122	4/25	Chad Anderson		3	ICP/0800	ICP/2000
Suppression Bugg#1	E-129	4/23	Chris Dargan		3	ICP/0800	ICP/2000
Suppression Buggy #6	E-68	4/22	James Ray **		1	ICP/0800	ICP/2000
SOFR	O-135	4/25	Donald Foco		1	ICP/0800	ICP/2000
EMTF	O-18	4/15	Bob Bruington		1	ICP/0800	ICP/2000
<b>6. Control Operations/Work Assignments:</b>							
<b>Task:</b>							
<ul style="list-style-type: none"> <li>• Coordinate with BICY duty officer for notification of newly reported ignitions</li> <li>• Coordinate initial attack action with assigned aviation and /or ground assets</li> <li>• Determine IA resource repositioning needs across BICY and FPWR</li> </ul>							
<b>Purpose:</b>							
<ul style="list-style-type: none"> <li>• Ensure communications with FL Hwy Patrol regarding smoke on I-75</li> <li>• Ensure timely response on any IA within BICY and FPWR</li> </ul>							
<b>End State:</b>							
<ul style="list-style-type: none"> <li>• Protect human life</li> <li>• Minimize environment damage to protect habitat of threatened and endangered species</li> <li>• Minimize damage to public and private property</li> </ul>							
<b>7. Special Instructions:</b> **Resources identified for swing shift if needed. Coordinate with Field OPS to determine need. Set up structure protection at ICP as directed by Operations. Follow tracked vehicle requirement restrictions. Establish and maintain LCES during operational period. Utilize MIST tactics as outlined in Fire Operations Guide for BICY. Comms trailer Phone (772) 631-2573							
<b>8. Division/Group Communication Summary</b>							
Function	Channel	RX Frequency N/W	RX Tone/NAC	TX Frequency N/W	TX Tone/NAC	Mode	
COMMAND	1	172.4250	1035	170.1000	1035	D	
COMMAND	2	172.4250	1035	171.6250	1035	D	
COMMAND	7	164.6250	1188	163.1500	1188	D	
TACTICAL	9	166.8250		166.8250		A	
AIR TO GROUND	6	169.1125		169.1125		A	
<b>9. Prepared By (Resource Unit Leader)</b>			<b>Approved By (Planning Section Chief)</b>			<b>Date</b>	<b>Time</b>
/s/Melonie Sellers/EJ Bunzendahl (t) /Jessica Hollingsworth (t)			Dave Berens/Dave Dobbs			04/12/17	16:00

## Division/Group Assignment List (ICS 204 WF)

<b>1. Incident Name:</b>		<b>3.</b>				
Cowbell Fire		<b>Branch:</b>	<b>Division/Group Parliament/ Misc. Fire Patrol</b>			
<b>2. Operational Period:</b>						
Date/Time From: 04/13/17 0800	Date/Time To: 04/13/17 2000					
<b>4. Operations Personnel</b>						
AIR ATTACK SUPERVISOR		FIELD OPERATIONS	Robert Trincado Mike Davis (t)			
DIVISION/GROUP SUPERVISOR		PLANNING OPERATIONS	Steve Weaver Paul Varnedoe (t)			
<b>5. Resources Assigned this Period</b>						
Strike Team / Task Force / Resource Designator	LWD	Leader	Number Persons	Drop Off PT./Time	Pick Up PT./Time	
unstaffed						
<b>6. Control Operations/Work Assignments:</b>						
<b>Task:</b>						
<ul style="list-style-type: none"> <li>Patrol and monitor fires on BICY and FPWR with aviation and ground assets as directed by lead OSC commensurate with values at risk</li> <li>Monitor fires for further suppression management action</li> </ul>						
<b>Purpose:</b>						
<ul style="list-style-type: none"> <li>Assure suppression action taken limits environmental impact, consistent with MIST tactics</li> </ul>						
<b>End State:</b>						
<ul style="list-style-type: none"> <li>Protect human life</li> <li>Minimize damage to public and private property</li> <li>Minimize environmental damage to protect habitat of threatened and endangered species</li> </ul>						
<b>7. Special Instructions:</b> Follow tracked vehicle requirement restrictions. Establish and maintain LCES during operational period.						
Utilize MIST tactics as outlined in Fire Operations Guide for BICY. Comms trailer Phone (772) 631-2573.						
<b>8. Division/Group Communication Summary</b>						
Function	Channel	RX Frequency N/W	RXTone/NAC	TX Frequency N/W	TX Tone/NAC	Mode
COMMAND	7	164.6250	1188	163.1500	1188	D
TACTICAL	11	166.7250	0659	166.7250	0659	D
AIR TO GROUND	10	168.3250		168.3250		A
<b>9. Prepared By (Resource Unit Leader)</b>		<b>Approved By (Planning Section Chief)</b>		<b>Date</b>	<b>Time</b>	
/s/Melonie Sellers/EJ Bunzendahl (t) /Jessica Hollingsworth (t)		Dave Berens/Dave Dobbs		04/12/17	16:00	

## Division/Group Assignment List (ICS 204 WF)

<b>1. Incident Name:</b>			<b>3.</b>				
Cowbell Fire			<b>Branch:</b>		<b>Division/Group Structure Protection Group</b>		
<b>2. Operational Period:</b>							
Date/Time From: 04/13/17 0800		Date/Time To: 04/13/17 2000					
<b>4. Operations Personnel</b>							
AIR ATTACK SUPERVISOR				FIELD OPERATIONS		Robert Trincado Mike Davis (t)	
DIVISION/GROUP SUPERVISOR		Ryan Vice		PLANNING OPERATIONS		Steve Weaver Paul Varnedoe (t)	
<b>5. Resources Assigned this Period</b>							
Strike Team / Task Force / Resource Designator		LWD	Leader		Number Persons	Drop Off PT./Time	Pick Up PT./Time
STPS	O-4.62	4/16	Glenn Phillips		1	ICP/0800	ICP/2000
TFLD	O-61	4/19	Mario Marquez		1	ICP/0800	ICP/2000
TFLD	O-106.1	4/16	Wes Richardson		1	ICP/0800	ICP/2000
TFLD (t)	O-106.3	4/16	Darren Gunn		1	ICP/0800	ICP/2000
MOD BIFZ #2	O-106	4/16	Brett Morefield		8	ICP/0800	ICP/2000
ENG6 WFS	E-8	4/16	Dave Sechrist		3	ICP/0800	ICP/2000
ENG6 WFS	E-9	4/16	Saul Irvin		3	ICP/0800	ICP/2000
ENG6 Attack One	E-10	4/16	Wes Coleman		2	ICP/0800	ICP/2000
FOBS	O-22	4/16	Ron Rockis		1	ICP/0800	ICP/2000
FOBS	O-23	4/18	Luke Hurley		1	ICP/0800	ICP/2000
EMTF	O-16	4/15	Tracey Milakovic		1	ICP/0800	ICP/2000
<b>6. Control Operations/Work Assignments:</b>							
<b>Task:</b>							
<ul style="list-style-type: none"> <li>• Patrol and conduct mop up, as appropriate around structures</li> <li>• Affirm contact procedures with Collier County EMS and Sheriff Dept. to assure smooth communication in event of community evacuation needs</li> <li>• Assure protection plan is in place and ready to implement; pumps are ready and evacuation plan in place</li> <li>• Coordinate with landowners to determine special considerations and road or trail access</li> </ul>							
<b>Purpose:</b>							
<ul style="list-style-type: none"> <li>• Ensure timely response to protect human life, property and access</li> </ul>							
<b>End State:</b>							
<ul style="list-style-type: none"> <li>• Maintain communications with appropriate county emergency management and law enforcement agencies to complete timely evacuations</li> </ul>							
<b>7. Special Instructions:</b> Establish and maintain LCES during operational period. Comms trailer Phone (772) 631-2573. Identify process for backhaul of structure protection equipment and supplies.							
<b>8. Division/Group Communication Summary</b>							
Function	Channel	RX Frequency N/W	RXTone/NAC	TX Frequency N/W	TX Tone/NAC	Mode	
COMMAND	13	168.7000		170.9750	110.9	A	
COMMAND	12	166.6125		168.4000	110.9	A	
TACTICAL	11	166.7250	0659	166.7250	0659	D	
AIR TO GROUND	10	168.3250		168.3250		A	
<b>9. Prepared By (Resource Unit Leader)</b>		<b>Approved By (Planning Section Chief)</b>			<b>Date</b>	<b>Time</b>	
/s/Melonie Sellers/EJ Bunzendahl (t) /Jessica Hollingsworth (t)		Dave Berens/Dave Dobbs			04/12/17	16:00	

# AIR OPERATIONS SUMMARY

OPERATIONAL PERIOD DATE: 04-13-2017

0900-2000

<b>1. INCIDENT NAME:</b> Cowbell	<b>2. PREPARED BY:</b> Mike Rock	<b>PREPARED DATE/TIME:</b> 04/12/2017 1730	<b>3. Sunrise:</b> 0705 <b>Sunset:</b> 1948
<b>4. REMARKS (Safety Notes, Hazards, Air Operations Special Equipment,, etc.):</b> Medivac Aircraft: <b>6HX</b> MTR- Located along state road 29.Fire Dispatch gets MTR activity every morning Do not over fly structures with external load missions. All aircraft should use strobes and running lights in smoky conditions. Hazards: Snags, non-incident aircraft, and winds. Contract helicopter working special use permit in North Central portion of BICY. Area identified on pilot briefing board. ATGS has air to air communications.			<b>5. Squawk 1255</b>  TFR—7/7786 ZMA FL, Airspace 25 nm NE of Ochopee SFC 3000ft.  NOTAM – 04/054 – Airspace firefighting aircraft 5nm of (9FL7) SFC 2000ft.

6. PERSONNEL	Phone	7. FREQUENCIES	AM	FM	8. FIXEDWING	Base
AOBD: Mike Rock ASGS: Pete Kubiak ASGS(T) Mike O’Leary	606-813-9750 404-661-4819 239-336-9789	Air/Air Rotor	123.575			
		Air/Air Fixed Wing	118.825		Air Attack- Air Attack	197GB – Aero Commander MKY 4566M Baron MKY
ATGS: Ken McLaughlin ATGS – James Gresham	813-997-0317 208-660-4139	Air/Ground Cowbell		168.3250 RX/TX (A) 169.1125 RX/TX (A) 167.9500 RX/TX (A)	T-801 T-493	Seat –IMM, Start 0900 Seat —IMM, Start 0900
<u>Oasis Helibase (9FL7)</u> HEB1 Matt Clinton HEB2-T Jay Thatcher <u>Immokalee Airport</u> Seat Manager – Jack Benzilio HMGB Connie Fox HEB2 – Tracy Elliott	239-695-0278 208-634-9414 970-903-7922			169.7250 RX N1514 163.3875 TX N1738		
Big Cypress Fire Dispatch	239-695-9280 x 104	Air/Guard  Deck		168.6250 RX/TX Tone 110.9  166.7750		

**9. HELICOPTERS (Use Additional Sheets As Necessary)**

FAA N# or Designator	TY	MAKE/MODEL	BASE	START	REMARKS	FAA N# or Designator	TY	MAKE/MODEL	BASE	START	REMARKS
206RW	3	Bell 206	Oasis	0900	UNAVAILABLE	1KA	1	K-MAX	Oasis	0900	Bucket
0HH	3	Bell 206	Oasis/RON-Miami	0900	Recon / Bucket	612CK	1	S-61	IMM	0900	Tanked
28HX	2	205A1	Oasis	0900	Crew/Bucket	718	1	CH-54	IMM	0900	Tanked
6HX	2	Bell 205	Oasis	0900	Crew/Bucket						

**10. TASK/MISSION/ASSIGNMENT (Use ICS-220a if additional space needed; Type/Function includes: Air Tactical, Retardant, Recon, Personnel Transport, Water Dropping, etc.)**

TYPE/FUNCTION	NAME OF PERSONNEL OR CARGO (if applicable) OR INSTRUCTIONS FOR TACTICAL AIRCRAFT	MISSION START	FLY FROM	FLY TO
Mapping	As Requested	0930		
Reconnaissance	As Requested	0930		
Water Drops	As Requested	0930		

### Major Hazards and Risks: *Poisonous Plants*

State the problem!

There are poisonous plants at ICP and on the fire.

Come up with a solution!

Identify and then avoid contact and warn others.

Know what to do when you-  
accidentally come in contact!

Use the information provided to get relief.



Figure 1. Poison ivy, poison oak, poison sumac, and poisonwood

Credit: (Source: Book 2012; Larry Kornak, UF/IFAS)

**Poison Wood** ALL of you are allergic to this.

Bark is tan and yellow with a black ooze.

Poison ivy. Poison sumac. You've probably heard of these, but how about *poisonwood*? Or *manchineel*? Some of South Florida's forests harbor these toxic native trees that you need to learn to identify. The basics of these irritating plants is they're all related by one thing, **urushiol**, an oily resin that can irritate your skin. Allergic contact dermatitis, as your doctor will call it, is the primary problem caused by urushiol. Only a billionth of a gram can cause a reaction in some people. Some people have no reaction to small doses of urushiol at all. But get enough on you and you will.



**Brazilian Pepper** some of you may be allergic to this.



#### **Safe practices**

Identify and Avoid

However if it does get on you-----

#### **A few tactics:**

You can use dawn liquid for soaking clothes and shoes, since it's great at cutting grease and oils. Use 'Tecnu' or 'Zanfel' on affected skin before you break out. Calamine lotion or anti-itch medications can reduce the urge to scratch.

If a person suffers from severe allergic reaction such as; swelling or difficulty breathing or is exposed to smoke from these plants burning and if this occurs seek medical help immediately and follow the 'nine line' protocol found in the IAP

#### **Incident Safety Officers:**

Ken Gordon (T), Mark Sullivan, Buddy Kelley, Joe Fowler, David Dallison, John Foley and Don Foco

## Incident Safety Analysis 215a

Cowbell & Initial Attack

Thursday April 13, 2017

8. Location	9. Hazard	6. Control or Abatement Action (Engineering, Administrative, PPE, Avoidance, Education, etc)
DIVS ALL / IA	Helicopter Operations	<ul style="list-style-type: none"> <li>~ Stay clear of all bucket drops when suppression actions are in place and allow 1 minute prior to re-entry.</li> <li>~ Ensure communications are established with firefighters before conducting bucket drops.</li> <li>~ Monitor Air-Ground AG communications.</li> <li>~ Follow aviation safety guidelines in IRPG and IHOG.</li> </ul>
DIVS D & IA	Roadside Response I - 75, Hwy. 41 & Hwy 29	<ul style="list-style-type: none"> <li>~ Do not engage in suppression activities along the road shoulders on I - 75 unless FHP has the road closed or they have traffic stopped. The median can be used for access.</li> <li>~ Do not park along the road shoulders on I -75.</li> <li>~ Anytime traffic is affected by the incident, contact the local law enforcement agency that has jurisdiction for assistance.</li> <li>~ Conduct all operations from as far as possible from traffic lanes.</li> <li>~ Park all vehicles on same side of road.</li> <li>~ Keep all hose, fire tools and equipment out of travel lanes.</li> <li>~ Use only vehicles equipped with emergency lights along highways.</li> <li>~ Operate pumps from the non-traffic side or from the cab.</li> </ul>
DIVS ALL / IA	Extreme Fire Behavior	<ul style="list-style-type: none"> <li>~ Share weather observations with all personnel assigned to division.</li> <li>~ Establish "Trigger Points" to withdraw.</li> <li>~ Use "Risk Management" process prior to engaging in suppression actions, refer to page 1, IRPG.</li> </ul>
DIVS ALL / IA	Hazard Trees	<ul style="list-style-type: none"> <li>~ Avoid cutting Hazard Trees, unless they are an obvious Safety Hazard to crews in the vicinity (Reference the "Big Cypress National Preserve - Wildfire Incident Resource Protection Plan")</li> <li>~ Follow "Hazard Tree Safety" guidelines, IRPG page 22.</li> <li>~ Post lookouts, or use a spotter in mop-up areas.</li> <li>~ Don't park vehicles or take breaks around hazard trees.</li> <li>~ Establish trigger points for disengagement during high wind events.</li> <li>~ Remember that the hazard zone extends a minimum of 2 1/2 tree heights.</li> </ul>
DIVS ALL / IA	Injury & Medical Emergency	<ul style="list-style-type: none"> <li>~ For Medical Incident, follow the 9 line procedures.</li> <li>~ For "air hoist capability" or "snake bite treatment" contact Radio call sign <b>'784'</b> to request assistance.</li> <li>~ Assist injured employee with appropriate medical care.</li> <li>~ Use EMT's on Division for initial care.</li> <li>~ Follow medical protocol as outlined in ICS-206 &amp; IRPG Pgs. 99-108</li> </ul>
DIVS ALL / IA	Driving & Traffic	<ul style="list-style-type: none"> <li>~ Practice "Defensive Driving" techniques traveling on all roads and city streets.</li> <li>~ Do not drive by helicopters dipping out of canal on the L - 28 road.</li> <li>~ Use spotters when backing</li> <li>~ Keep clutter off dash and inside cab.</li> <li>~ Follow Driving LCES (Lights, Chock blocks, Emergency brake, Seat belts.</li> <li>~ Always use headlights when on dusty roads.</li> <li>~ Yield to pedestrians and bicycles.</li> <li>~ Observe posted speed limits.</li> <li>~ Use the 3 second rule for following distance when driving.</li> <li>~ Avoid distractions (eating, cell phones, radio).</li> <li>~ Ensure that windshields are kept clean of dust and bugs.</li> </ul>
DIVS A & Z	Structure Protection & HAZMAT	<ul style="list-style-type: none"> <li>~ Review Watch outs, IRPG page 12. <b>Do Not</b> commit to stay and protect a structure if trigger points are reached.</li> <li>~ Use "Structure Assessment" checklist, IRPG pages 12-16.</li> <li>~ No safety zones are present, set trigger point to safe retreat.</li> <li>~ Patrol after passage of the fire front when safe.</li> <li>~ Follow "HAZMAT on pages 34-36 in IRPG.</li> </ul>
DIVS AII / IA	Swamp Buggy	<ul style="list-style-type: none"> <li>~ Ensure equipment is inspected and safe to use</li> <li>~ Restrict Buggy use to established trails</li> <li>~ Ensure operator is trained and certified to operate</li> <li>~ Ensure operator has proper PPE</li> <li>~ Passengers wear hardhats &amp; use 3 points of contact when loading or unloading</li> <li>~ Secure all seating so that it is stable and does not move</li> </ul>
DIVS ALL / IA	Communications	<ul style="list-style-type: none"> <li>~ Maintain communication with aviation resources, and suppression organization.</li> <li>~ Ensure all know frequency and protocol for contacting resources.</li> <li>~ Utilize the ICS 205.~ Utilize human repeaters when working in dead spots.</li> <li>~ Do not engage if communications cannot be established.</li> </ul>



## Incident Safety Analysis 215a

**Cowbell & Initial Attack**

**Thursday April 13, 2017**

DIVS ALL & IA	Power Utilities	<ul style="list-style-type: none"> <li>~ Notify all personnel of down electrical lines.</li> <li>~ Refer to the IRPG page 24 for Power Line Safety.</li> <li>~ Always treat downed wires as energized.</li> <li>~ Identify and avoid high tension transmission lines.</li> <li>~ Identify and avoid high pressure natural gas lines.</li> <li>~ Identify and avoid damaged gas service near structures.</li> <li>~ Be aware of utility restoration in your work area.</li> </ul>
DIVS ALL / IA	Chain Saw Operations	<ul style="list-style-type: none"> <li>~ Follow "Hazard Tree Safety" guidelines, IRPG page 22</li> <li>~ Look up, Look down, Look around for hazard tree indicators.</li> <li>~ Only fell and buck trees within your qualifications, and training.</li> <li>~ Follow "Procedural Felling Operations" on page 79 in IRPG.</li> <li>~ Do not fall trees during high wind events.</li> <li>~ Ensure proper use of all required PPE.</li> </ul>
DIVS ALL / IA	Firing Operations & Devices	<ul style="list-style-type: none"> <li>~ Only personnel trained in the use of each device will be authorized to use firing equipment.</li> <li>~ Ensure all personnel are aware of firing operations that may affect them and coordinate with adjoining divisions.</li> <li>~ Wear appropriate PPE.</li> <li>~ Ensure aerial/ground ignition plans have been adequately developed and personnel are briefed.</li> <li>~ Stay clear of bucket drops when pretreating fuels with air operations.</li> <li>~ Ensure that communications are established with helicopters if pretreating fuels.</li> </ul>
DIVS ALL / IA	Unburned Area/Reburn Potential	<ul style="list-style-type: none"> <li>~ Monitor weather.</li> <li>~ Base actions upon observed and predicted fire behavior.</li> <li>~ LCES Checklist (IRPG pg. 6).</li> <li>~ Look Up, Down and Around (IRPG pg. 2-3).</li> </ul>
DIVS ALL / IA	Fatigue & Over Exertion	<ul style="list-style-type: none"> <li>~ Drink 1 quart of water each hour during and after work.</li> <li>~ Rotate crews out of smoky areas.</li> <li>~ Set a reasonable work pace and allow adequate rest breaks while on the project.</li> <li>~ Use buddy system to monitor personnel of heat related and fatigue issues.</li> <li>~ Follow work / rest guidelines.</li> </ul>
DIVS A / Z / G	Heavy Equipment Operations	<ul style="list-style-type: none"> <li>~ Ensure communications are established with operators.</li> <li>~ Use hand signals if other communications are unavailable.</li> <li>~ Maintain a 100'- 200' exclusion area around equipment and increase it to 1 1/2 times tree height when in timber.</li> <li>~ Use a spotter when backing.</li> </ul>
DIVS ALL / IA	Wildlife	<ul style="list-style-type: none"> <li>~ Watch out for wildlife such as alligators, bear, deer, panthers, snakes.</li> <li>~ Do not feed, handle or taunt wildlife.</li> <li>~ Maintain safe distance and avoid contact ~Discard trash (food and containers) in proper disposal sites.</li> <li>~ Secure pump location sites, watch for alligators, snakes and other wildlife.</li> </ul>
DIVS ALL / IA	Firefighter & Public Smoke Exposure	<ul style="list-style-type: none"> <li>~ Identify homes and structures with private parties remaining behind the evacuation.</li> <li>~ Identify personnel responsible for contacting private parties.</li> <li>~ Use warning lights and provide traffic control on roadways during smoky and night operations.</li> <li>~ Rotate crews out of smoky areas during firing and mop-up operations.</li> <li>~ Contact Communications when firing operations are initiated.</li> </ul>
DIVS ALL / IA	UTV use	<ul style="list-style-type: none"> <li>~ Ensure equipment is inspected and safe to use.</li> <li>~ Restrict UTV use to established trails</li> <li>~ Ensure operator is trained and certified to operate.</li> <li>~ Ensure operator has proper PPE according to the Redbook and/or RMA.</li> <li>~ Question if it is mission critical.</li> </ul>
DIVS ALL / IA	Unplanned Public Interaction	<ul style="list-style-type: none"> <li>~ Be alert to non-fire personnel.</li> <li>~ All non-fire personnel will be escorted while on fireline.</li> <li>~ Post lookouts to in areas with public to avoid conflicts with mission tasks.</li> <li>~ Ensure sufficient security to restrict access to exclusion area.</li> </ul>

## MEDICAL PLAN (ICS 206)

<b>1. Incident Name:</b> Cowbell Fire	<b>2. Operational Period:</b> Date From: 04-13-17 Date To: 04-13-17 Time From: 0800 Time To: 2000
--	--

3. Medical Aid Stations:				
Name	Location	Contact Number(s)/Frequency	Paramedics on Site?	
Gene-Paul Matson EMTF, MEDL	Medical ICP	434-665-0444	<input checked="" type="checkbox"/> Yes	<input type="checkbox"/> No
James Fortner EMTF, MEDL T	Medical ICP	202-236-3139	<input type="checkbox"/> Yes	<input checked="" type="checkbox"/> No
Tracy Milakovic	Structure Protection Group	719-850-0022	<input type="checkbox"/> Yes	<input checked="" type="checkbox"/> No
Frank Abel	Division A	423-595-1578	<input checked="" type="checkbox"/> Yes	<input type="checkbox"/> No
Jim Stout	Division G	480-296-1566	<input checked="" type="checkbox"/> Yes	<input type="checkbox"/> No
Bob Bruington	IA	801-782-3585	<input type="checkbox"/> Yes	<input checked="" type="checkbox"/> No
Matt Lancaster	Division Z	303-870-5248	<input type="checkbox"/> Yes	<input checked="" type="checkbox"/> No

4. Transportation (indicate air or ground):				
Ambulance Service	Location	Contact Number(s)/Frequency	Level of Service	
Collier County EMS (ground)	Everglades City (Medic 61)	911	<input checked="" type="checkbox"/> ALS	<input type="checkbox"/> BLS
Collier County Med-Flight (air)	Naples Airport	911	<input checked="" type="checkbox"/> ALS	<input type="checkbox"/> BLS
6HX Bell 205 (air) medical evacuation	Oasis Heli-base	168.3250 (A/G 85)	<input type="checkbox"/> ALS	<input checked="" type="checkbox"/> BLS

5. Hospitals:							
Hospital Name	Address	Contact Number(s)	Travel Time		Trauma Center	Burn Center	Helipad
			Air	Ground			
Physicians Regional Collier Blvd	8300 Collier Blvd. Naples, FL 34114 Lat:26°6.313'/Long: -81°41.106'	239-354-6000 (Main) 239-354-6190 (ER)	15	50	<input type="checkbox"/> Yes Level: _____	<input type="checkbox"/> Yes <input checked="" type="checkbox"/> No	<input checked="" type="checkbox"/> Yes <input type="checkbox"/> No
Physicians Regional Pine Ridge	6101 Pine Ridge Road, Naples 34119 Lat:26°12.833'/Long: -81°43.954'	239-348-4000 (Main) 239-304-4748 (ER)	15	50	<input type="checkbox"/> Yes Level: _____	<input type="checkbox"/> Yes <input checked="" type="checkbox"/> No	<input checked="" type="checkbox"/> Yes <input type="checkbox"/> No
Naples Community Hospital	350 7 <sup>th</sup> Street North, Naples 34102 Lat:26°9.046'/Long: -81°47.907'	239-513-7709 (Main) 239-436-5151 (ER)	15	60	<input checked="" type="checkbox"/> Yes Level: <u>2</u>	<input type="checkbox"/> Yes <input checked="" type="checkbox"/> No	<input checked="" type="checkbox"/> Yes <input type="checkbox"/> No
Jackson Memorial Hospital	1611 NW 12 Avenue, Miami Lat:25°47.508'/Long: -80°12.756'	305-585-1111 (Main) 305-585-6910 (ER)	20	60	<input checked="" type="checkbox"/> Yes Level: <u>1</u>	<input checked="" type="checkbox"/> Yes <input type="checkbox"/> No	<input checked="" type="checkbox"/> Yes <input type="checkbox"/> No
Kendal Regional Medical Center	11750 SW 40 <sup>th</sup> St., Miami 33175 Lat:25°43.916'/Long: -80°23.148'	305-223-3000 (Main) 305-227-5544 (ER)	20	50	<input checked="" type="checkbox"/> Yes Level: <u>1</u>	<input type="checkbox"/> Yes <input checked="" type="checkbox"/> No	<input checked="" type="checkbox"/> Yes <input type="checkbox"/> No

6. Special Medical Emergency Procedures:
<ul style="list-style-type: none"> <li>• Patient or nearest responder notifies Group Supervisor who will respond to the scene and become the "incident within an incident" (IWI) commander.</li> <li>• <b>Group Supervisor will notify nearest medical responder and ICP-Communications</b> of the incident and "Nine Line" report attached to the back of this IAP or page 108 of the IRPG.</li> </ul> <p>Call "784" (Emergency &amp; Law Enforcement) Everglades Communications on the <b>Oasis or Carns Repeater, or by phone at 1-800-788-0511</b> if it is determined that a <b>pre-hospital medevac care, air hoist capability or snake bite treatment</b> is required. MedFlight located at Naples Municipal Airport will be used for pre-hospital medevac care. Miami-Dade Fire Rescue (MDFR) Air Rescue Bureau will be used for air hoist rescue and also for snake bite treatment. Everglades Communications will advise the 911 dispatcher for Collier or Dade County for their helicopter to communicate through the Incident's Air/Ground frequency.</p> <p>Note: If possible, give coordinates in aviation format – Degrees Decimal Minutes</p> <p><input type="checkbox"/> Check box if aviation assets are utilized for rescue. If assets are used, coordinate with Air Operations.</p>

<b>7. Prepared by</b> (Medical Unit Leader): Name: <u>Gene-Paul Matson/James P. Fortner(T)</u> Signature: <u>/s/ James P. Fortner</u>
<b>8. Approved by</b> (Safety Officer): Name: <u>Ken Gordon</u> Signature: <u>/s/ Kenneth R. Gordon</u>
ICS 206   IAP Page _____   Date/Time: <u>04/12/2017</u>

## INCIDENT RADIO COMMUNICATIONS PLAN (ICS 205)

3. Operational Period: DAY									
Date/Time From: 04/13/2017 0800			Date/Time To: 04/13/2017 2000						
Zone Group	Ch #	Function	Assignment	RX Freq	RX Tone/NAC	TX Freq	TX Tone/NAC	Mode (A,D, or M)	Remarks
	1	CARNS RPT	Initial Attack	172.4250	1035	170.1000	1035	D	Talk Group 1
	2	OASIS RPT	Initial Attack	172.4250	1035	171.6250	1035	D	Talk Group 1
	3	BCY LCL		166.7750	No Tone	166.7750	No Tone	A	
	4	BICY TAC 1	Division A	168.6000	No Tone	168.6000	No Tone	A	
	5	BICY LCL 2	DIVISION G	168.2500	No Tone	168.2500	No Tone	A	
	6	A/G 59	Initial Attack	169.1125	No Tone	169.1125	No Tone	A	
	7	Panther RPT	Initial Attack	164.6250	1188	163.1500	1188	D	Talk Group 1
	8	PANTHER TAC 1	DIVISION D/Z	166.7500	No Tone	166.7500	No Tone	A	
	9	PANTHER TAC 2	Initial Attack	166.8250	No Tone	166.8250	No Tone	A	
	10	A/G 85	ALL DIVISIONS	168.3250	No Tone	168.3250	No Tone	A	
	11	Everglades TAC 1	Structure Protection / Parliament Misc.	166.7250	0659	166.7250	0659	D	
	12	CMD 12	DIVISION A/Z Structure	166.6125	No Tone	168.4000	110.9	A	
	13	CMD 13	DIVISION D /Structure	168.7000	No Tone	170.9750	110.9	A	
	14	A/G	Aerial Ignition	167.9500	No Tone	167.9500	No Tone	A	
	15	CMD 15	DIV G	173.0375	No Tone	167.3250	110.9	A	
	16	AIR GUARD		168.6250	No Tone	168.6250	110.9	A	
Name: GEORGE ROSENTHAL				Signature: /s/ George Rosenthal					
				Date/Time: 04/12/2017 1600					



**To: All Incident Personnel, Cowbell Fire**

As Southern Area Type II Incident Commander, I am committed to a policy of “zero tolerance” of inappropriate behavior during incident operations. Any form of harassment, discriminatory practices, or disrespectful behavior will not be tolerated. Known or reported acts will be dealt with appropriately.

I am particularly concerned about the perception that alcohol has a place in any of the Incident facilities. It is not appropriate to indulge in alcoholic beverages during any fire assignment.

The Teams from the Southern Region have a team expectation of “NO ALCOHOL” from the time of dispatch until the time of physical release from the Incident. Members of the Team voluntarily comply with this expectation; all incident personnel will be expected to do so also.

We endorse, support, and expect an attitude of mutual respect for all Incident personnel and the public we serve. We also, endorse the attitude and work ethic that places “Safety First, every time on every Incident.” We expect nothing less.

/s/ Steve Parrish  
Incident Commander  
Southern Area Gold Team

**5 Day DMOB Report**

REQUEST NUMBER	RESOURCE NAME	ITEM CODE	TRAVEL DATE	TRAVEL METHOD	JETPORT
O-91	MAINE, TYLER	HMGB	04/13/2017	POV	
O-96	OWEN, MARY A	THSP	04/13/2017	AOV	TLH
C-6	CREW - T1 - ASHEVILLE	HC1	04/14/2017	AOV	AVL
O-4.62	PHILLIPS, GLEN	STPS	04/14/2017	A/R	PSC
O-79	ALLEN, SAMUEL GLEN	FFT2	04/15/2017	POV	RSW
C-1	PINE KNOT JCC - CREW #1	CC	04/16/2017	A/R	TYS
E-7	ENGINE - T6 - 31	ENG6	04/16/2017		
E-89	ENGINE - T6 - 607	ENG6	04/16/2017		
O-4.26	BROWN, EARL R	CTSP	04/16/2017	AOV	ATL
O-4.32	JUSSILA, JERRY ALVIN	LSC2	04/16/2017	A/R	DLH
O-4.38	BEE, GLEN R	FACL	04/16/2017	A/R	SLC
O-14	JUSTUS, MICHAEL	BCMG	04/16/2017	A/R	FCA
O-35	THELEN, JENNIFER	PIO1	04/16/2017		
O-69	HAMM, CYNTHIA M	PTRC	04/16/2017	POV	RSW
O-70	PERNAS, TAMMIE	THSP	04/16/2017	POV	RSW
O-71	LOGIUDICE, KEVIN	IADP	04/16/2017	POV	RSW
O-72	RICHARDS, CHRIS	TFLD	04/16/2017	POV	RSW
O-75	BOWDEN, CONNOR	FFT2	04/16/2017	POV	RSW
O-76	PHIPPEN, JUSTIN	ENGB	04/16/2017	POV	RSW
O-77	MATEO, MATTHEW	ENGB	04/16/2017	AOV	RSW
O-78	ASHBAUGH, SAM	ENGB	04/16/2017	POV	RSW
O-81	CONNOLLY, NICHOLAS R	HECM	04/16/2017	AOV	DEN
O-84	WRIGHT, MINDY	FOBS	04/16/2017	POV	RSW
O-85	HURRELL, MEGAN R	HECM	04/16/2017	POV	RSW
O-88	SHOOK, SHAWN PATRICK	TFLD	04/16/2017	POV	RSW
O-90	LASHOTO, PETE S	GSUL	04/16/2017	A/R	ATL
O-93	MCKNIGHT, JORDAN	DIVS	04/16/2017	POV	RSW
O-95	SUSZEK, GREGORY	DIVS	04/16/2017		RSW
O-98	CARTY, NIKITA	ITSS	04/16/2017	POV	RSW
O-99	CLARK, VALERIE B	ORDM	04/16/2017	POV	RSW
O-104	PUTNAM, DAVID A	THSP	04/16/2017		RSW
O-106	MODULE - SUPPRESSION - BIFZ	HCM	04/16/2017	AIR	BOI
O-109	LIGHTSEY, MIKE	ATVO	04/16/2017	AOV	FLL
O-136	MURPHY, MATHEW KYLE	FFT2	04/16/2017	PAS	FLL

Contact Thomas at 478-550-6372 for questions or concerns. For air travel, notify DMOB at least 72 hours before travel date.

# Recycling Guidelines

What is Allowed	What is not Allowed
Plastic #1 through #7, aluminum, and steel cans	Window glass, ceramics, light bulbs
Clear, Brown, and Green Glass	Automotive fluids, paint, cleaning products
Cardboard	Batteries
Paper, magazines, phone books	No food contaminated paper
<ul style="list-style-type: none"><li>• Break down all cardboard boxes</li><li>• Empty all liquids and food products</li></ul>	

## TRAINING MESSAGE

APRIL 13

Puzzled about what you need to do to become qualified in a new position? Need some help navigating the ICS system and what direction you may want to follow from here?

Training has the Field Managers Course Guide, Wildland Fire Qualification System Guide, and other resources. Bring your training and quals questions in and we'll figure them out together.

*"The game of life is the game of everlasting learning. At least it is if you want to win."  
Charles Munger, Berkshire Hathaway co-chairman.  
(Warren Buffet's business partner)*

John Davis, Training Specialist



## Southern Area Incident Management Gold Team Fire Information

Looking for more information on the Cowbell and Parliament Fires in Big Cypress National Preserve? Follow us on social media:



InciWeb <https://inciweb.nwcg.gov/unit/2296>



Twitter <https://twitter.com/BigCypressNPS>



Facebook <https://www.facebook.com/BigCypressNPS>

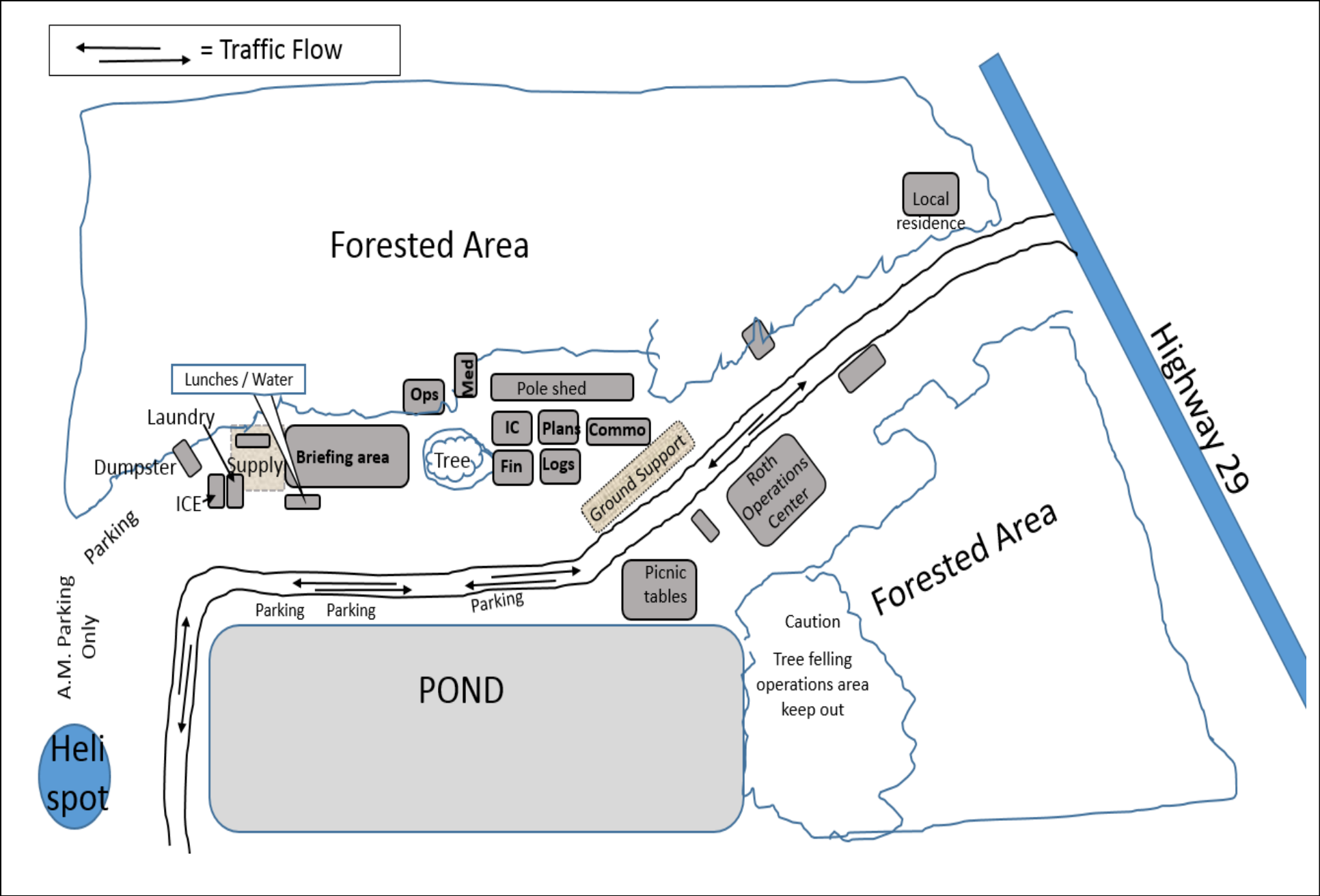
You can also call us between 8 a.m. and 8 p.m. at 305-204-6659.

For general information about the Big Cypress National Preserve, visit <https://www.nps.gov/bicy> or call 239-695-1107.

**WE WANT YOUR PICTURES AND VIDEOS!**

Please email us your videos and pictures at [BICYfireinfo@gmail.com](mailto:BICYfireinfo@gmail.com). We love to post them on social media and our information boards.

# Base Camp Map

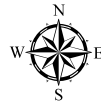




# Cowbell Fire

## Vicinity Map

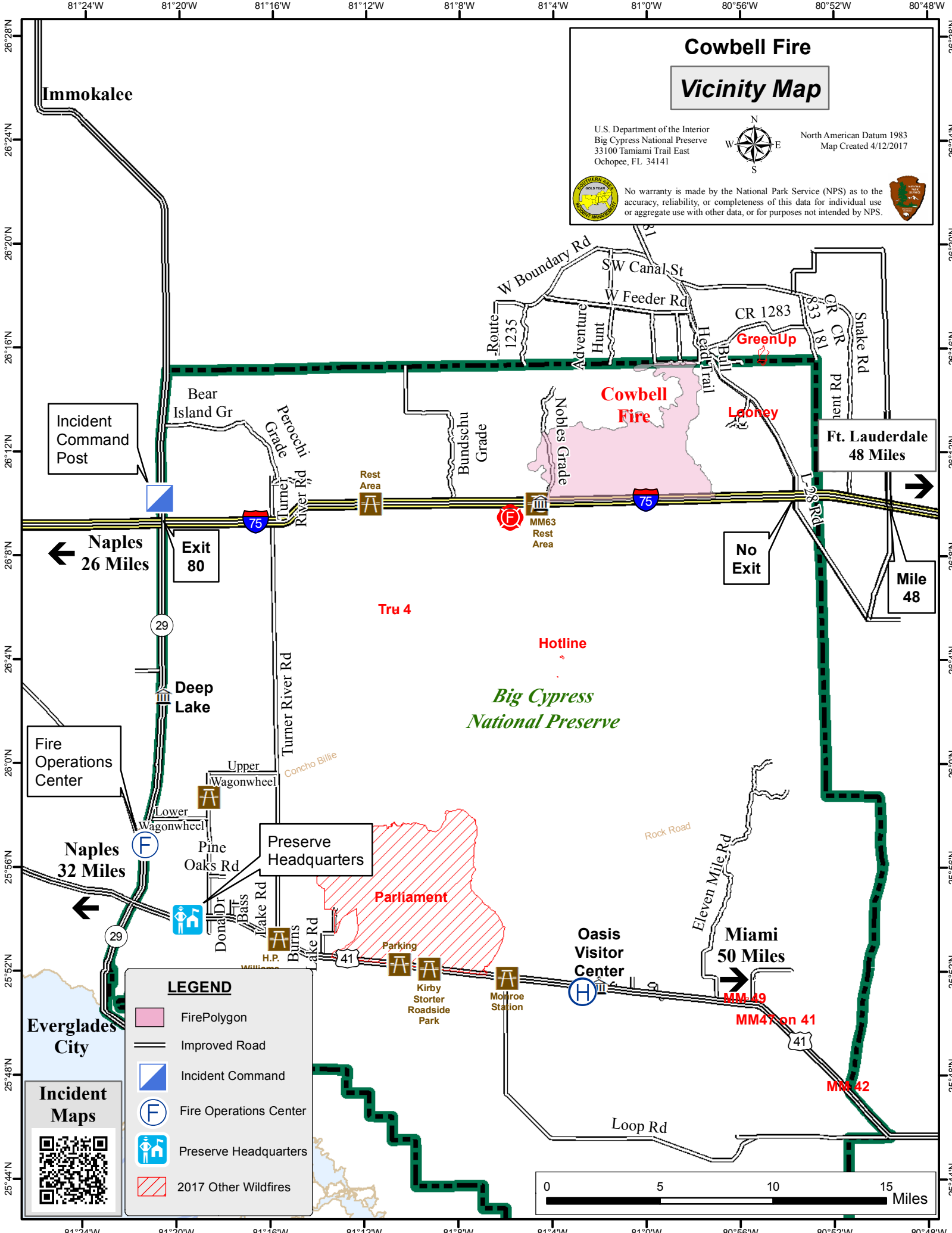
U.S. Department of the Interior  
 Big Cypress National Preserve  
 33100 Tamiami Trail East  
 Ochopee, FL 34141



North American Datum 1983  
 Map Created 4/12/2017



No warranty is made by the National Park Service (NPS) as to the accuracy, reliability, or completeness of this data for individual use or aggregate use with other data, or for purposes not intended by NPS.



Incident Command Post

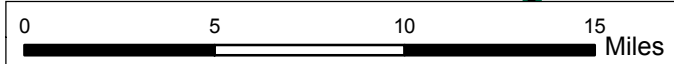
Naples 26 Miles

Fire Operations Center

Naples 32 Miles

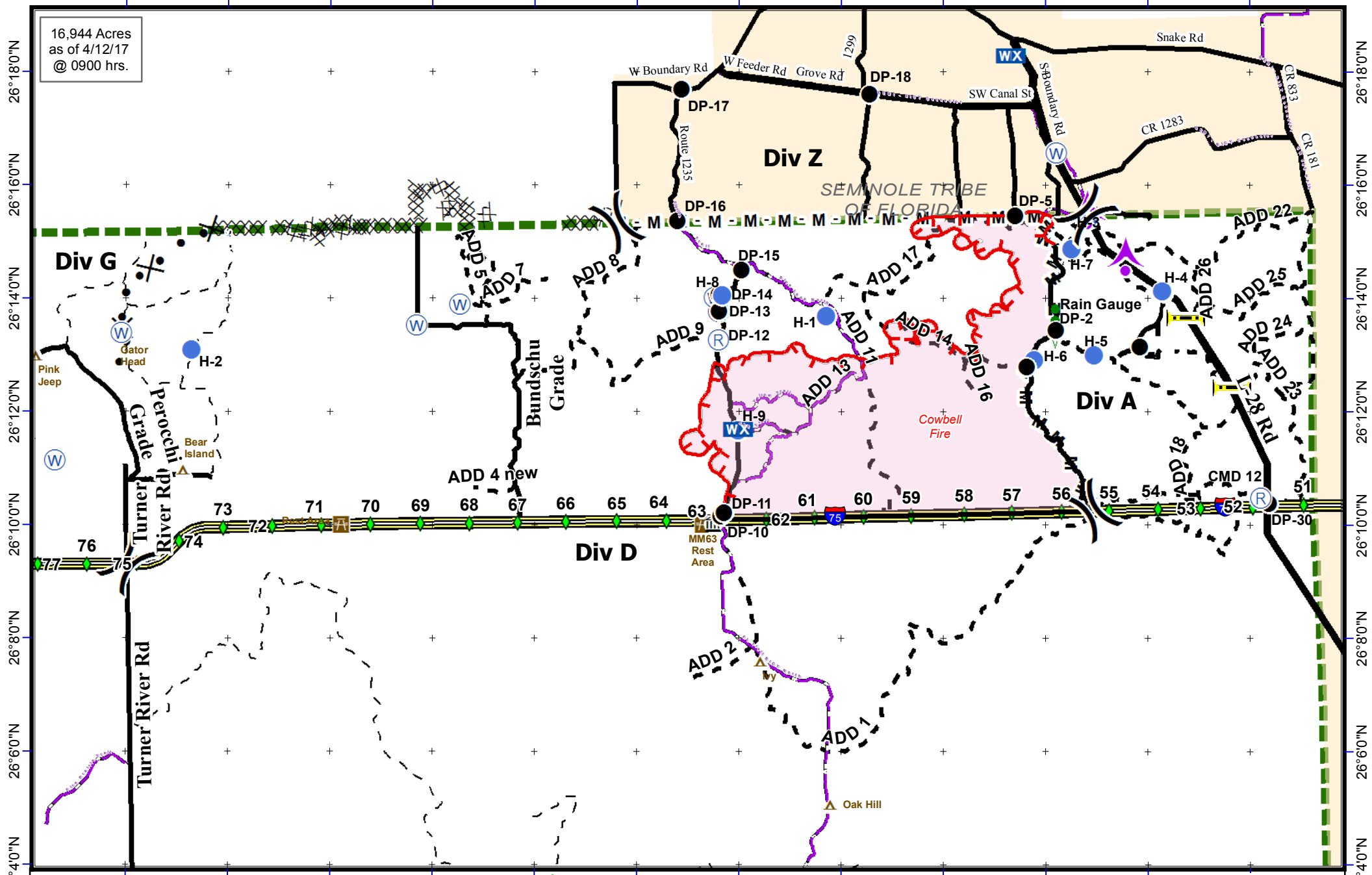
**Incident Maps**

LEGEND	
	FirePolygon
	Improved Road
	Incident Command
	Fire Operations Center
	Preserve Headquarters
	2017 Other Wildfires



81°16'0"W 81°14'0"W 81°12'0"W 81°10'0"W 81°8'0"W 81°6'0"W 81°4'0"W 81°2'0"W 81°0'0"W 80°58'0"W 80°56'0"W 80°54'0"W

16,944 Acres  
as of 4/12/17  
@ 0900 hrs.



**Cowbell Fire**  
FL-BCP-017033  
**IAP Map**  
April 13, 2017  
Day Shift



- ▬ Uncontrolled Fire Edge
- Completed Line
- M - M** Mastication Line
- Completed Dozer Line
- Proposed Line
- Rain Gauge
- Drop Point
- Helispot
- Division
- WX Mobile Weather
- Repeater
- ▲ Aerial Hazard
- Private Structures
- NPS Property
- ▬ Bridge Locations
- I-75
- Improved Road
- Primary Buggy Trail



NAD 83 UTM 17



26°18'0"N 26°16'0"N 26°14'0"N 26°12'0"N 26°10'0"N 26°8'0"N 26°6'0"N 26°4'0"N

**PHONE LIST - COWBELL FIRE**

<b>Position</b>	<b>Name</b>	<b>Phone Number</b>	<b>Position</b>	<b>Name</b>	<b>Phone Number</b>
<b>COMMAND</b>					
Incident Commander	Steve Parrish	850-567-9507	<b>OPERATIONS</b>		
Incident Commander (t)	Lance Elmore	501-520-7276	Lead Ops	Greg Brooks	828-421-5025
Deputy Incident Commander	Marty Bentley	423-584-1682	Planning Ops	Steve Weaver	828-360-2476
Deputy Incident Commander (t)	Debbie Beard	850-524-9966	Planning Ops (t)	Paul Varnedoe	423-650-2184
Liaison Officer	Mike Wright	970-819-2890	Field Ops	Robert Trincado	239-253-4135
Public Information	Michelle Burnett	803-920-6167	Field Ops (t)	Mike Davis	936-219-7743
Public Information	Susan Blake	850-509-9952	Division A	Chad Cook	828-360-4985
Public Information (t)	Donald Simon	910-975-1895	Division A (t)	Heath Thomas	501-208-7077
Safety Officer	Buddy Kelly	850-447-1344	Division D	Mary Owen	601-917-2860
Safety Officer	Mark Sullivan	205-531-7183	Division D	Micah Johnson	360-301-4728
Safety Officer (t)	Ken Gordon	850-688-4474	Division G	Chuck Alluisi	970-962-9466
AFMO	Byron Hart	850-264-9567	Division Z	Tom Crews	252-216-6361
<b>PLANNING</b>			Division Initial Attack	Kris Croddy	520-275-6747
Chief	Dave Berens	601-319-6823	Division Parliament	UNSTAFFED	
Chief	Dave Dobbs	928-699-5706	Structure Protection Group	Ryan Vice	979-215-1936
Resource Unit Leader	Melonie Sellers	601-508-8997	<b>AIR OPERATIONS</b>		
Resource Unit Leader (t)	E.J. Bunzendahl	859-556-2347	Air Operation Branch Director	Mike Rock	606-813-9750
Resource Unit Leader (t)	Jessica Hollingsworth	540-383-6531	Air Support Group Supervisor	Pete Kubiak	404-661-4819
Situation Unit Leader	Jeff DeMatteis	601-415-9080	<b>LOGISTICS</b>		
Situation Unit Leader (t)	Carol O'Bryan	903-263-8704	Chief	Chris Alford	571-334-8549
Fire Behavior Analyst	Gary Jarvis	251-288-1084	Chief (t)	Tom Phillips	936-635-7154
Fire Behavior Analyst (t)	Kelly Cagle	336-302-0343	Deputy	Jerry Jussila	218-235-8983
Fire Behavior Analyst (t)	Brenda Dale	906-280-3398	Deputy	Susan Cornett	903-930-5321
Air Resource Advisor	Andrea Holland	970-274-0010	Supply Unit	Tom Piper	727-514-5513
READ	Phil Wilson	406-871-1907	Facilities Unit	Glen Bee	208-847-5507
READ	JoAnne Young	970-422-2246	Ground Support Unit Leader	Michael Howarth	936-414-2697
IMET	John Pendergrast	240-499-6649	Ground Support Unit Phone		772-631-2568
GISS	Chris Evans	928-273-4203	Ordering Manager	Sherri Kite	850-209-2150
GISS	Melanie Hans	618-315-5404	Receiving & Distribution	Chris Combs	727-992-0046
GISS (t)	Jeff Adams	361-205-4744	Base Camp Manager	Mike Justus	
Demob		239-658-0157	Communications	George Rosenthal	936-707-1832
Check In	Jeff Turner	865-684-0095	Communications	Ron Regan	828-772-8514
Training Specialist	John Davis	231-878-0074	Comms Trailer		772-631-2573
Compter Tech	Jerry Dronberger	479-747-7020	Medical Unit Leader	Gene-Paul Matson	434-665-0444
Compter Tech	Rusty Brown	478-973-6231	Medical Unit Leader (t)	James Fortner	202-236-3139
Compter Tech (t)	Nikita Carty	305-878-997	Security Mananger	Sasha Herrin	239-300-5755
<b>FINANACE</b>			Security Mananger (t)	RJ Seehase	414-739-5696
Chief	Wanda Kelley	423-584-1472	Security	Ryan Maier	352-302-6117
Chief (t)	Holly Cyprian	928-919-3027	Security	Chris Kelly	978-580-9245
Time Unit Leader	Laura Wilson	765-427-7564	Security	Bain Bannon	318-446-1759
Time Unit Leader (t)	Sherise Foster	919-943-7843	Security	Sam Maldonado	909-522-6905
Comp/Claims	Terri McDonald	352-454-5385	Security	Stanley Garner	352-672-1036
Equipment Time Recorder (t)	Donna Line	706-474-3216			
Personel Time Recorder	Sherise Foster	919-943-7843			
Personnel Time Recorder (t)	Gustavo Vallejo	423-457-7403			



### Medical Incident Report- "9 Line"

**FOR ALL MEDICAL EMERGENCIES: IDENTIFY ON SCENE INCIDENT COMMANDER BY NAME AND POSITION AND ANNOUNCE "MEDICAL EMERGENCY" TO INITIATE RESPONSE FROM IMT COMMUNICATIONS/DISPATCH.**

Use items one through nine to communicate situation to communications/dispatch.

**1. CONTACT COMMUNICATIONS/DISPATCH - Comms Trailer Phone (772-631-2573)**

Radio Call Sign "784" for Life Threatening Emergencies on the Oasis or Carns repeater or by phone at 1-800-788-0511

*Ex: "Communications, Div. Alpha. Stand-by for Priority Medical Incident Report." (If life threatening request designated frequency be cleared for emergency traffic.)*

**2. INCIDENT STATUS: Provide incident summary and command structure.**

Nature of Injury/Illness		<i>Describe the injury (Ex: Broken leg with bleeding)</i>
Incident Name		<i>Geographic Name + "Medical" (Ex: Trout Meadow Medical)</i>
Incident Commander		<i>Name of IC</i>
Patient Care		<i>Name of Care Provider (Ex: EMT Smith)</i>

**3. INITIAL PATIENT ASSESSMENT: Complete this section for each patient. This is only a brief, initial assessment. Provide additional patient info after completing this 9 Line Report.**

Number of Patients:	Male / Female	Age:	Weight:
Conscious? <input type="checkbox"/> YES <input type="checkbox"/> NO = MEDEVAC!			
Breathing? <input type="checkbox"/> YES <input type="checkbox"/> NO = MEDEVAC!			
Mechanism of Injury: <i>What caused the injury?</i>			
Lat/Long (Datum NAD83)			

**4. SEVERITY OF EMERGENCY, TRANSPORT PRIORITY**

SEVERITY	TRANSPORT PRIORITY
<input type="checkbox"/> URGENT-RED Life threatening injury or illness. <i>Ex: Unconscious, difficulty breathing, bleeding severely, 2° - 3° burns more than 4 palm sizes, heat stroke, disoriented.</i>	Ambulance or MEDEVAC helicopter. Evacuation need is IMMEDIATE.
<input type="checkbox"/> PRIORITY-YELLOW Serious Injury or illness. <i>Ex: Significant trauma, not able to walk, 2° - 3° burns not more than 1-2 palm sizes.</i>	Ambulance or consider air transport if at remote location. Evacuation may be DELAYED.
<input type="checkbox"/> ROUTINE-GREEN Not a life threatening injury or illness. <i>Ex: Sprains, strains, minor heat-related illness.</i>	Non-Emergency. Evacuation considered Routine of Convenience.

**5. TRANSPORT PLAN:**

Air Transport: (Agency Aircraft Preferred)

<input type="checkbox"/> Helispot	<input type="checkbox"/> Short-haul/Hoist	<input type="checkbox"/> Life Flight	<input type="checkbox"/> Other
Ground Transport:			
<input type="checkbox"/> Self-Extract	<input type="checkbox"/> Carry-Out	<input type="checkbox"/> Ambulance	<input type="checkbox"/> Other

**6. ADDITIONAL RESOURCE/EQUIPMENT NEEDS:**

<input type="checkbox"/> Paramedic/EMT(s)	<input type="checkbox"/> Crew(s)	<input type="checkbox"/> SKED/Backboard/C-Collar
<input type="checkbox"/> Burn Sheet(s)	<input type="checkbox"/> Oxygen	<input type="checkbox"/> Trauma Bag
<input type="checkbox"/> Medication(s)	<input type="checkbox"/> IV/Fluid(s)	<input type="checkbox"/> Cardiac Monitor/AED
<input type="checkbox"/> Other (i.e. splints, rope rescue, wheeled litter)		

**7. COMMUNICATIONS:**

Function	Channel Name/Number	Receive (Rx)	Tone/NAC *	Transmit (Tx)	Tone/NAC *
COMMAND	CARNS Rpt Channel 1	172.4250	1035	170.1000	1035
COMMAND	OASIS Rpt Channel 2	172.4250	1035	171.6250	1035
COMMAND	CMD Channel 12	166.6125	No Tone	168.4000	110.9
AIR-TO-GRND	AG/85 Channel 10	168.3250	No Tone	168.3250	No Tone
TACTICAL					

\*(NAC for digital radio system)

**8. EVACUATION LOCATION:**

Lat/Long (Datum NAD83) <i>EX: N 40 42.45' x W 123 03.24'</i>	
Patient's ETA to Evacuation Location:	
Helispot/Extraction Size and Hazards:	

**9. CONTINGENCY:**

**Considerations:** *If primary options fail, what actions can be implemented in conjunction with primary evacuation method? Be thinking ahead...*

**REMEMBER:** **Confirm ETA's of resources ordered  
Act according to your level of training  
Be Alert. Keep Calm. Think Clearly. Act Decisively.**